

Data Path : Z:\HPCHEM1\BNA M\DATA\BM020718\
 Data File : BM014162.D
 Acq On : 07 Feb 2018 15:25
 Operator : SJ/JU
 Sample : PB105903BL
 Misc :
 ALS Vial : 10 Sample Multiplier: 1

Instrument :
 BNA_M
 ClientSampleId :
 PB105903BL

Integration Parameters: rteint.p
 Integrator: RTE
 Smoothing : ON Filtering: 5
 Sampling : 1 Min Area: 3 % of largest Peak
 Start Thrs: 0.2 Max Peaks: 100
 Stop Thrs : 0 Peak Location: TOP

If leading or trailing edge < 100 prefer < Baseline drop else tangent >
 Peak separation: 5

Method : Z:\HPCHEM1\BNA M\METHODS\8270-BM020718.M
 Title : ASP BNA STANDARDS FOR 5 POINT CALIBRATION

Signal : TIC

peak #	R.T. min	first scan	max scan	last scan	PK TY	peak height	corr. area	corr. % max.	% of total
1	5.169	365	371	387	rBV	2183151	3188499	53.10%	8.942%
2	6.740	631	638	653	rBV	2302312	3474302	57.86%	9.743%
3	7.081	690	696	710	rBV	2385413	3676161	61.22%	10.309%
4	7.546	769	775	785	rBV	397398	627674	10.45%	1.760%
5	7.857	820	828	840	rBV	1757590	2848404	47.43%	7.988%
6	8.704	964	972	985	rBV	1283744	2225426	37.06%	6.241%
7	10.322	1240	1247	1264	rBV	394544	775859	12.92%	2.176%
8	12.810	1664	1670	1687	rBV	3291154	5017612	83.56%	14.071%
9	14.204	1901	1907	1924	rVB3	613514	1046290	17.42%	2.934%
10	15.704	2155	2162	2182	rBV	2614623	3888256	64.75%	10.904%
11	16.963	2369	2376	2391	rBV	677364	1160717	19.33%	3.255%
12	19.604	2819	2825	2838	rBV	5229906	6004894	100.00%	16.840%
13	21.168	3086	3091	3100	rBV	666151	958710	15.97%	2.689%
14	23.345	3455	3461	3470	rBV	379363	765293	12.74%	2.146%

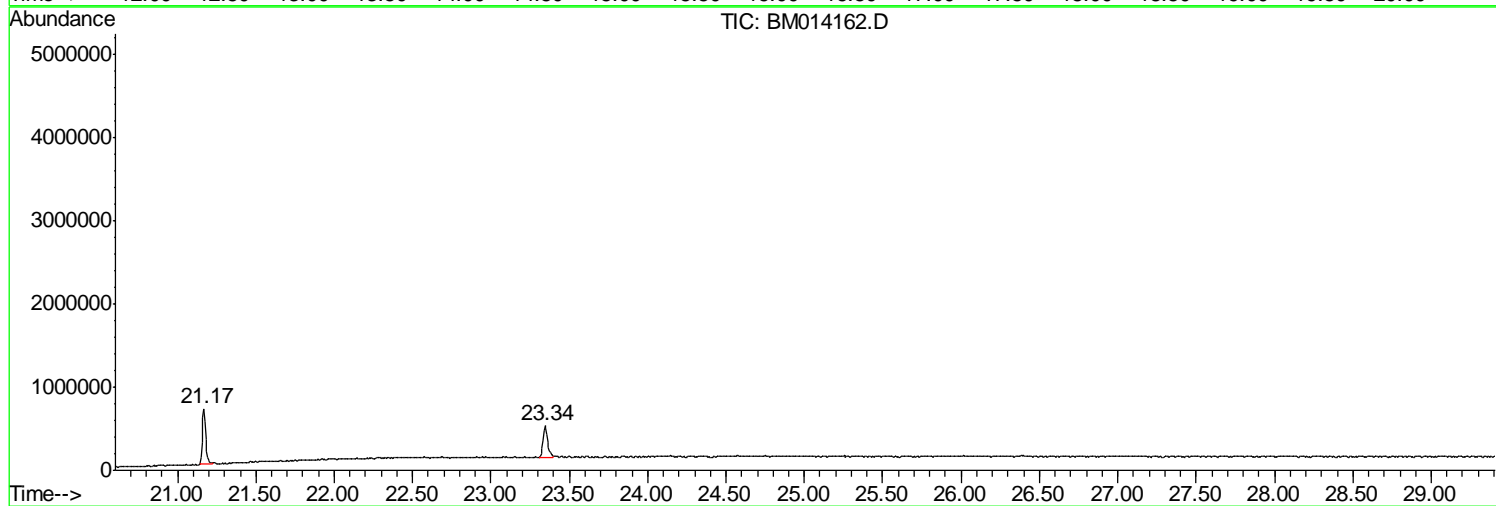
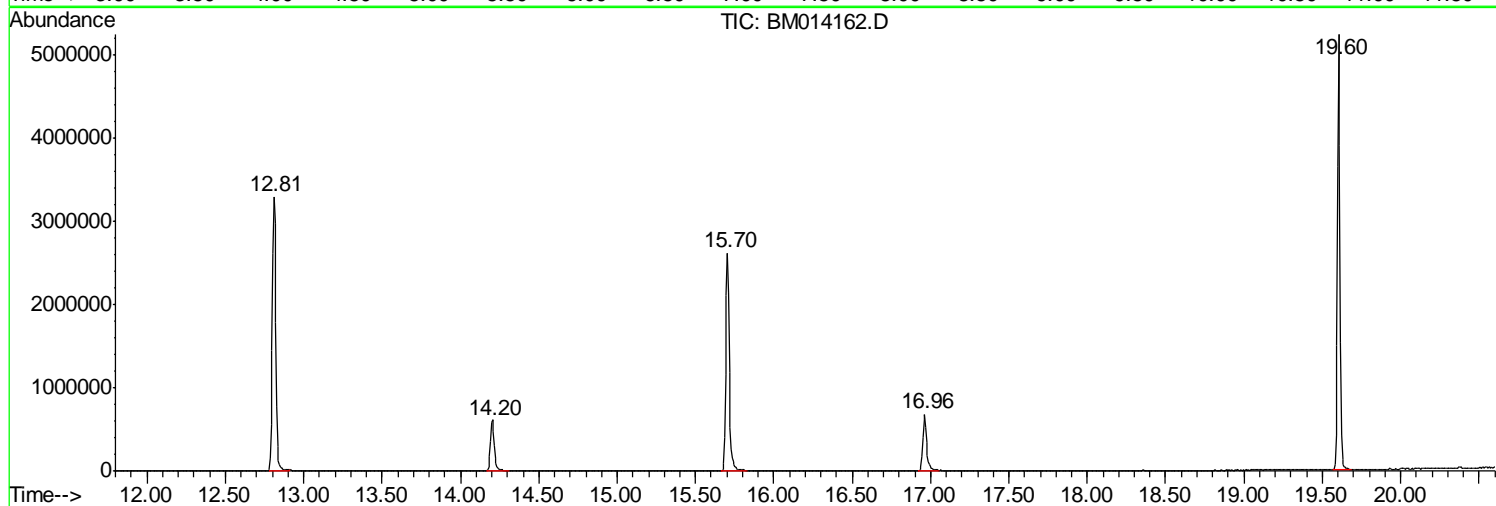
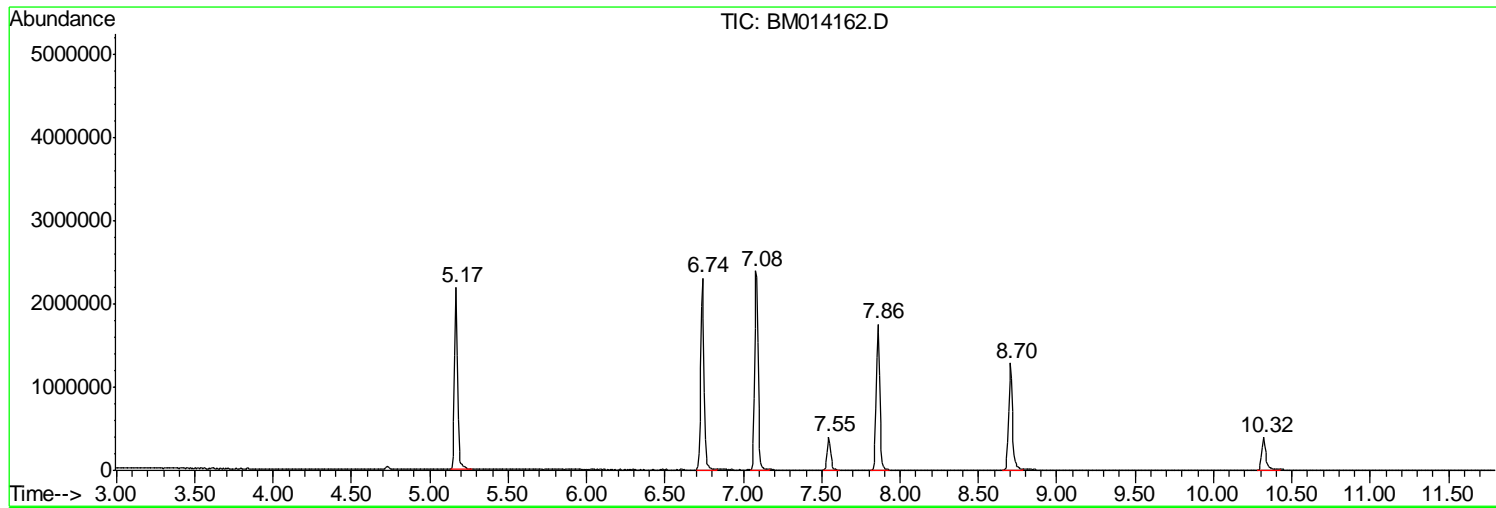
Sum of corrected areas: 35658097

Data Path : Z:\HPCHEM1\BNA M\DATA\BM020718\
Data File : BM014162.D
Acq On : 07 Feb 2018 15:25
Operator : SJ/JU
Sample : PB105903BL
Misc :
ALS Vial : 10 Sample Multiplier: 1

Instrument :
BNA_M
ClientSampleId :
PB105903BL

Quant Method : Z:\HPCHEM1\BNA M\METHODS\8270-BM020718.M
Quant Title : ASP BNA STANDARDS FOR 5 POINT CALIBRATION

TIC Library : C:\DATABASE\NIST02.L
TIC Integration Parameters: LSCINT.P



Data Path : Z:\HPCHEM1\BNA M\DATA\BM020718\
 Data File : BM014162.D
 Acq On : 07 Feb 2018 15:25
 Operator : SJ/JU
 Sample : PB105903BL
 Misc :
 ALS Vial : 10 Sample Multiplier: 1

Instrument :
 BNA_M
 ClientSampleID :
 PB105903BL

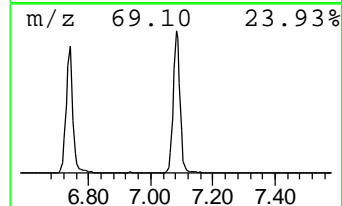
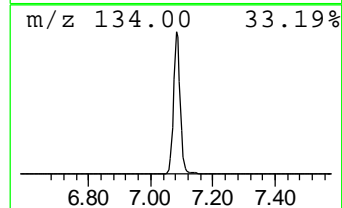
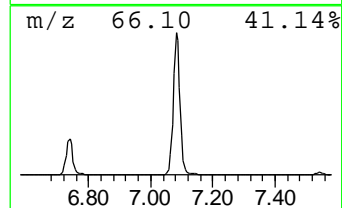
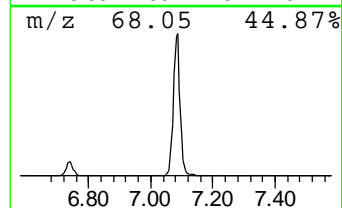
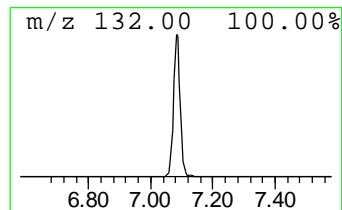
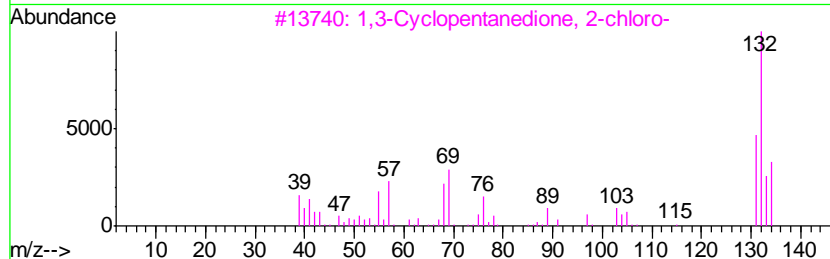
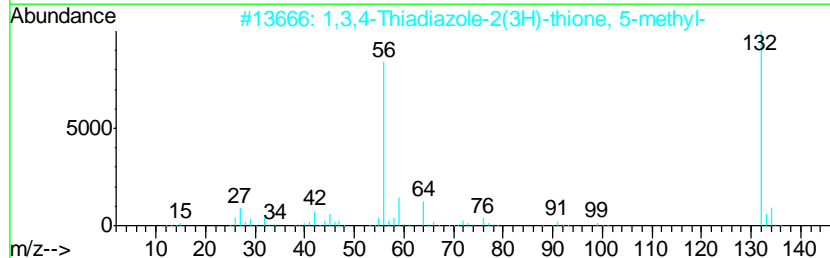
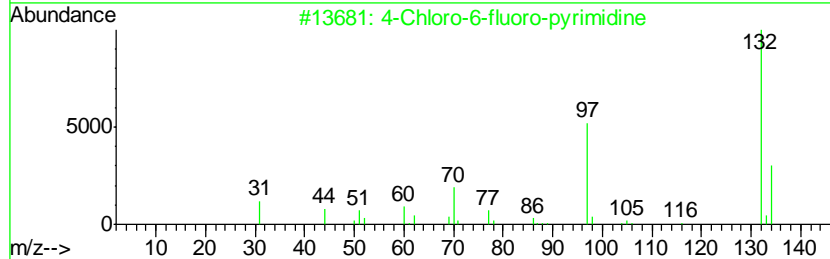
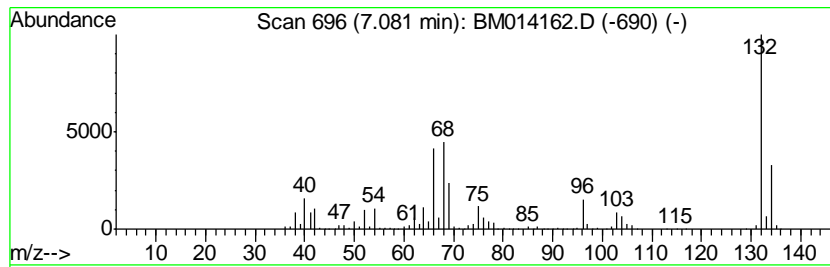
Quant Method : Z:\HPCHEM1\BNA M\METHODS\8270-BM020718.M
 Quant Title : ASP BNA STANDARDS FOR 5 POINT CALIBRATION

TIC Library : C:\DATABASE\NIST02.L
 TIC Integration Parameters: LSCINT.P

 Peak Number 1 unknown7.08 Concentration Rank 1

R.T.	EstConc	Area	Relative to ISTD	R.T.
7.08	117.14 ng	3676160	1,4-Dichlorobenzene-d4	7.55

Hit#	of	Tentative ID	MW	MolForm	CAS#	Qual
1	5	4-Chloro-6-fluoro-pyrimidine	132	C4H2ClFN2	051422-01-6	14
2		1,3,4-Thiadiazole-2(3H)-thione, ...	132	C3H4N2S2	029490-19-5	14
3		1,3-Cyclopentanedione, 2-chloro-	132	C5H5ClO2	014203-19-1	12
4		3H-1,2-Dithiol-3-one, 5-methyl-	132	C4H4OS2	003620-08-4	10
5		3-Chloro-6-fluoro-pyrazine	132	C4H2ClFN2	1000146-10-7	10



Data Path : Z:\HPCHEM1\BNA_M\DATA\BM020718\
Data File : BM014162.D
Acq On : 07 Feb 2018 15:25
Operator : SJ/JU
Sample : PB105903BL
Misc :
ALS Vial : 10 Sample Multiplier: 1

Instrument :
BNA_M
ClientSampleId :
PB105903BL

Quant Method : Z:\HPCHEM1\BNA_M\METHODS\8270-BM020718.M
Quant Title : ASP BNA STANDARDS FOR 5 POINT CALIBRATION

TIC Library : C:\DATABASE\NIST02.L
TIC Integration Parameters: LSCINT.P

TIC Top Hit name	RT	EstConc	Units	Response	--Internal Standard--			
					#	RT	Resp	Conc
unknown7.08	7.08	117.1	ng	3676160	1	7.55	627674	20.0