

Data Path : Z:\HPCHEM1\BNA_M\DATA\BM021115\
 Data File : BM000496.D
 Acq On : 12 Feb 2015 02:54
 Operator : TP/IZ
 Sample : PB81661BL
 Misc : SBLK18
 ALS Vial : 24 Sample Multiplier: 1

Instrument :
 BNA_M
ClientSampled :
 SBLK18

Manual Integrations
APPROVED
 apatel
 2/12/2015 4:10:57 PM

Quant Time: Feb 12 03:57:12 2015
 Quant Method : Z:\HPCHEM1\BNA_M\METHODS\SOM01.2-EPA-SIM-BM021115.M
 Quant Title : ASP BNA STANDARDS FOR 5 POINT CALIBRATION
 QLast Update : Wed Feb 11 23:58:48 2015
 Response via : Initial Calibration

Internal Standards	R.T.	QIon	Response	Conc	Units	Dev(Min)
1) 1,4-Dichlorobenzene-d4	7.72	152	3262	0.40	ng/ul	0.00
2) Naphthalene-d8	10.50	136	11667	0.40	ng/ul	0.00
6) Acenaphthene-d10	14.37	164	7751	0.40	ng/ul	0.00
10) Phenanthrene-d10	17.10	188	16307m	0.40	ng/ul	0.00
16) Chrysene-d12	21.30	240	13811	0.40	ng/ul	0.00
20) Perylene-d12	23.53	264	18135m	0.40	ng/ul	0.00
System Monitoring Compounds						
4) 2-Methylnaphthalene-d10	12.10	152	7428	0.48	ng/ul	0.00
14) Fluoranthene-d10	19.14	212	16420m	0.45	ng/ul	0.00
Target Compounds						
						Qvalue
15) Fluoranthene	19.16	202	717	0.01	ng/ul	78
18) Benzo(a)anthracene	21.28	228	1608	0.04	ng/ul#	94
19) Chrysene	21.33	228	1806	0.04	ng/ul#	94
24) Indeno(1,2,3-cd)pyrene	25.78	276	1474	0.02	ng/ul	97
25) Dibenzo(a,h)anthracene	25.79	278	1178	0.02	ng/ul#	52
26) Benzo(g,h,i)perylene	26.47	276	1276	0.02	ng/ul#	77

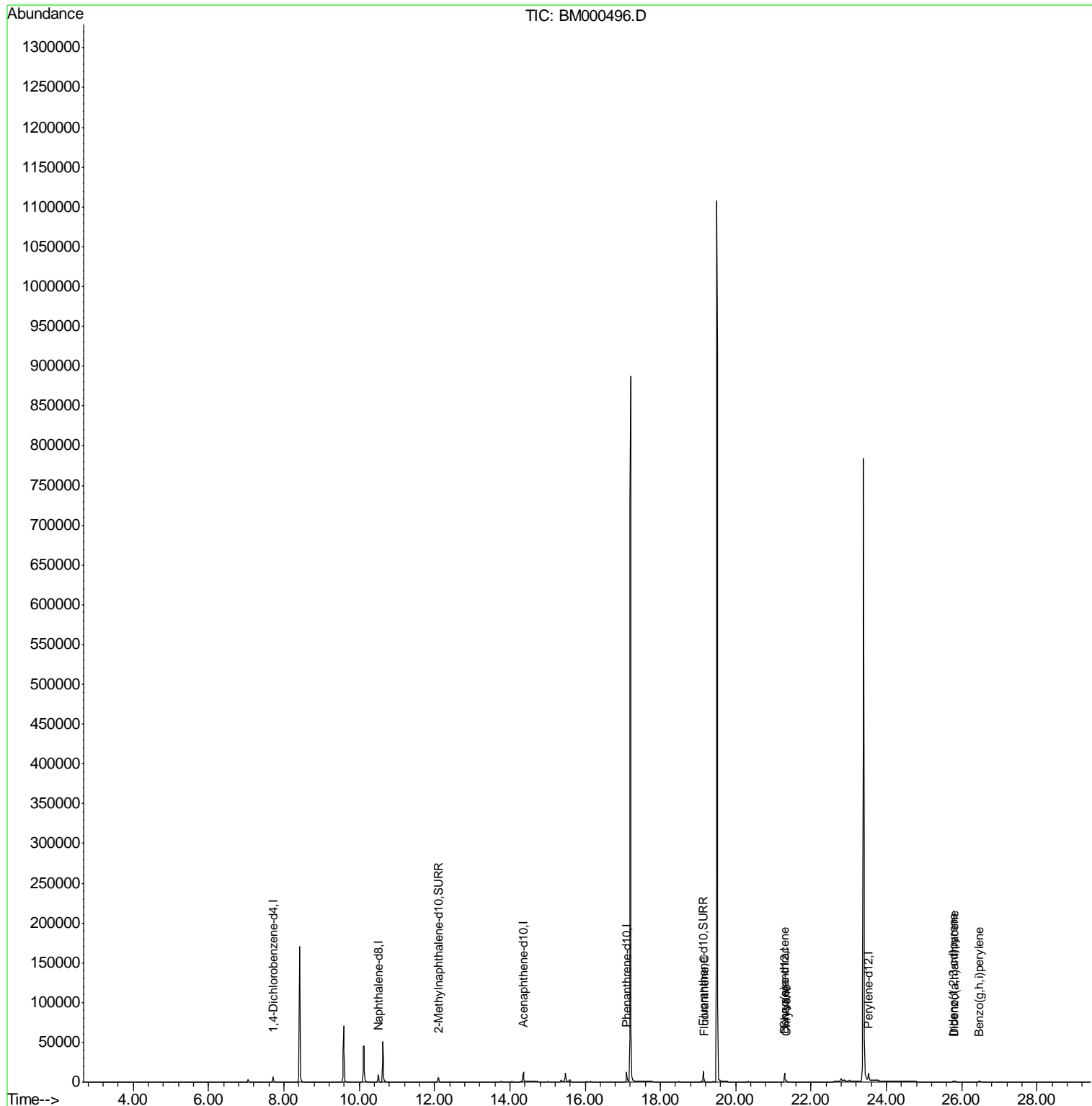
(#) = qualifier out of range (m) = manual integration (+) = signals summed

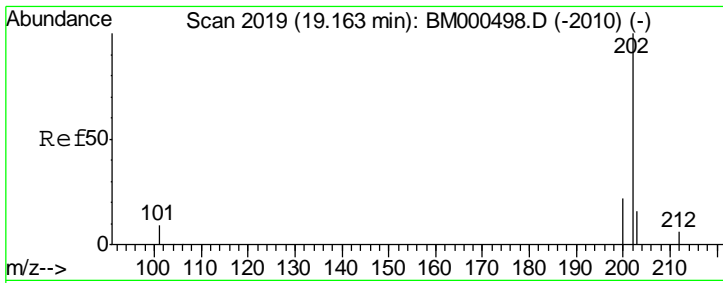
Data Path : Z:\HPCHEM1\BNA_M\DATA\BM021115\
 Data File : BM000496.D
 Acq On : 12 Feb 2015 02:54
 Operator : TP/IZ
 Sample : PB81661BL
 Misc : SBLK18
 ALS Vial : 24 Sample Multiplier: 1

Instrument :
 BNA_M
ClientSampled :
 SBLK18

Manual Integrations
APPROVED
 apatel
 2/12/2015 4:10:57 PM

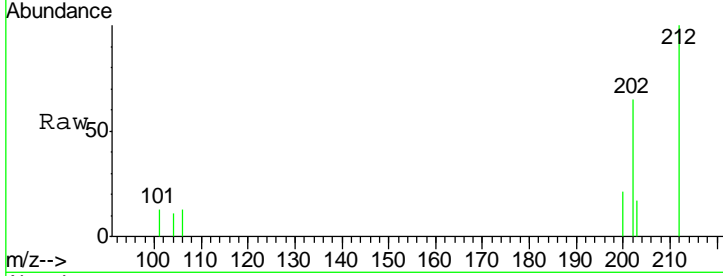
Quant Time: Feb 12 03:57:12 2015
 Quant Method : Z:\HPCHEM1\BNA_M\METHODS\SOM01.2-EPA-SIM-BM021115.M
 Quant Title : ASP BNA STANDARDS FOR 5 POINT CALIBRATION
 QLast Update : Wed Feb 11 23:58:48 2015
 Response via : Initial Calibration





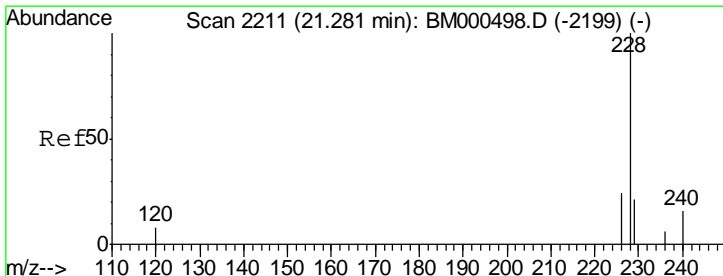
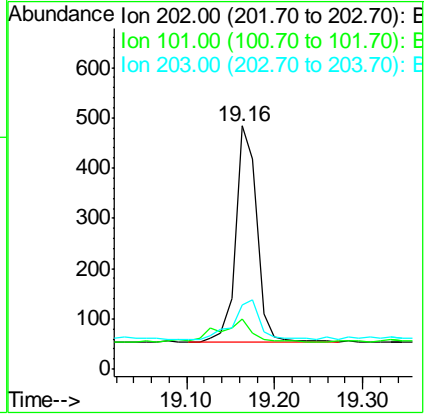
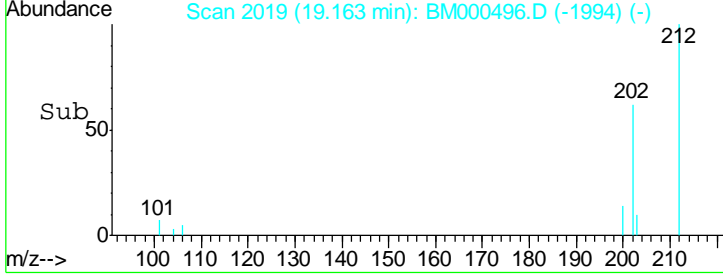
#15
 Fluoranthene
 Concen: 0.01 ng/ul
 RT: 19.16 min Scan# 2019
 Delta R.T. -0.00 min
 Lab File: BM000496.D
 Acq: 12 Feb 2015 02:54

Instrument :
 BNA_M
 ClientSampled :
 SBLK18

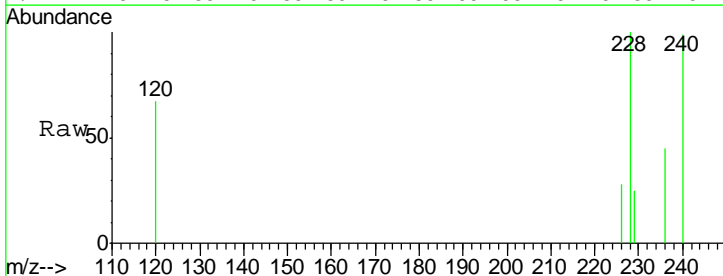


Tgt Ion	Resp	Lower	Upper
202	717		
101	20.5	0.0	24.6
203	26.4	0.0	39.2

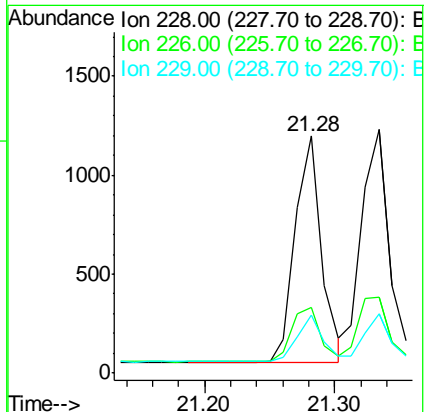
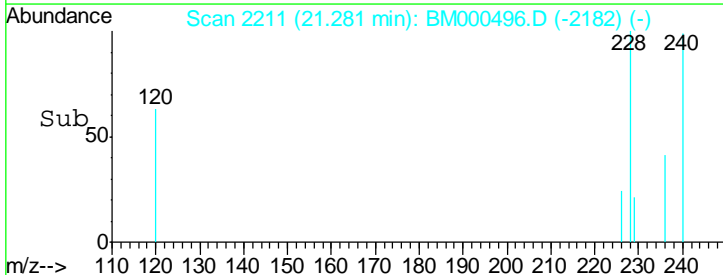
Manual Integrations
 APPROVED
 apatel
 2/12/2015 4:10:57 PM

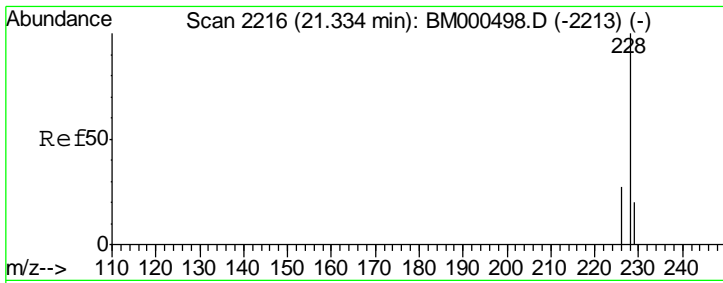


#18
 Benzo(a)anthracene
 Concen: 0.04 ng/ul
 RT: 21.28 min Scan# 2211
 Delta R.T. -0.00 min
 Lab File: BM000496.D
 Acq: 12 Feb 2015 02:54



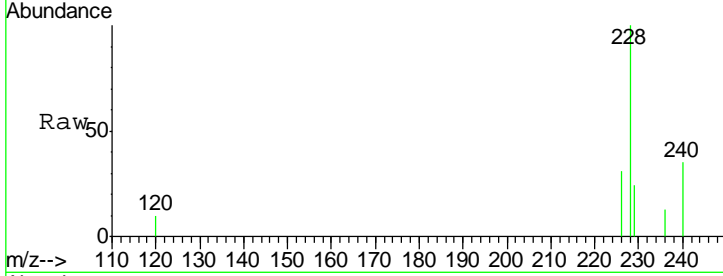
Tgt Ion	Resp	Lower	Upper
228	1608		
226	27.8	21.4	32.0
229	24.7	15.6	23.4#





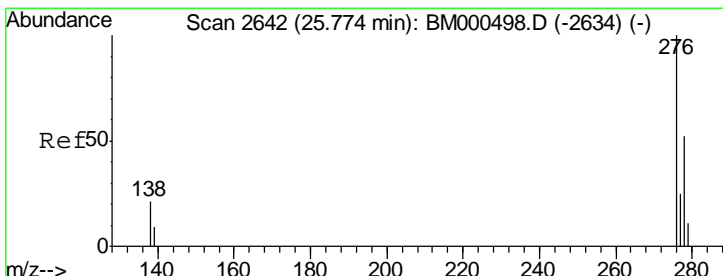
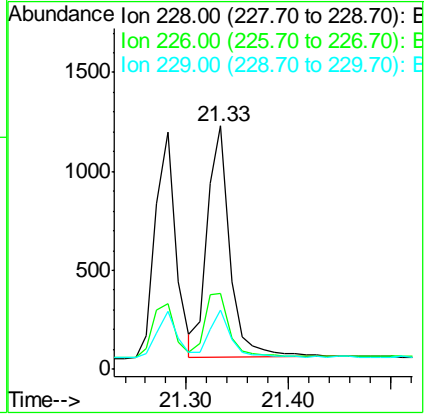
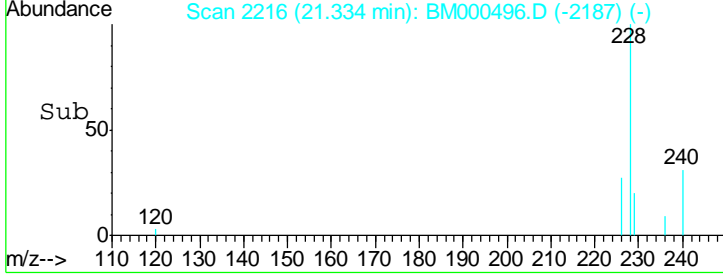
#19
 Chrysene
 Concen: 0.04 ng/ul
 RT: 21.33 min Scan# 2216
 Delta R.T. -0.00 min
 Lab File: BM000496.D
 Acq: 12 Feb 2015 02:54

Instrument :
 BNA_M
 ClientSampled :
 SBLK18

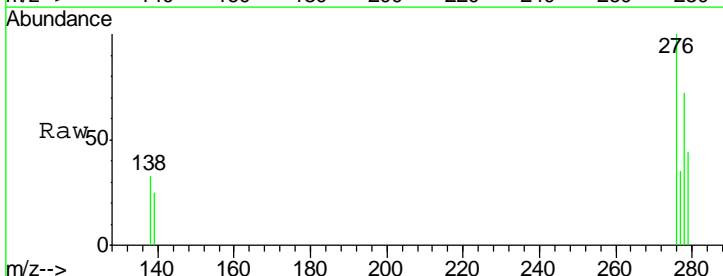


Tgt Ion	Resp	Lower	Upper
228	100		
226	31.0	23.0	34.6
229	24.1	15.9	23.9

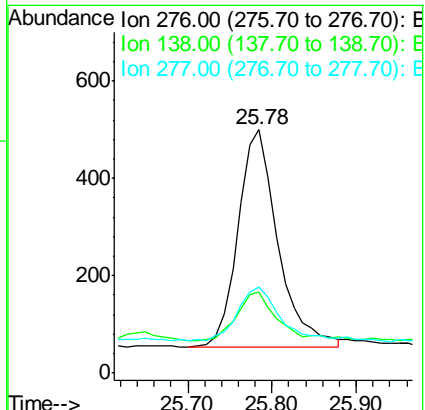
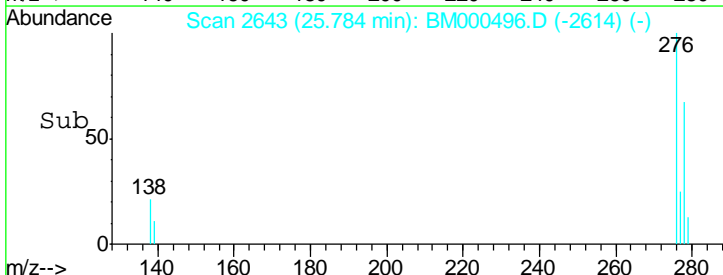
Manual Integrations
 APPROVED
 apatel
 2/12/2015 4:10:57 PM

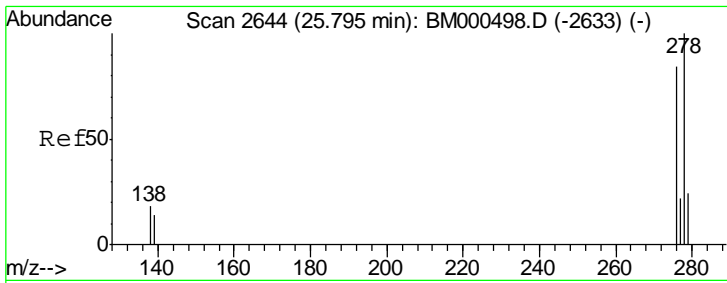


#24
 Indeno(1,2,3-cd)pyrene
 Concen: 0.02 ng/ul
 RT: 25.78 min Scan# 2643
 Delta R.T. -0.00 min
 Lab File: BM000496.D
 Acq: 12 Feb 2015 02:54



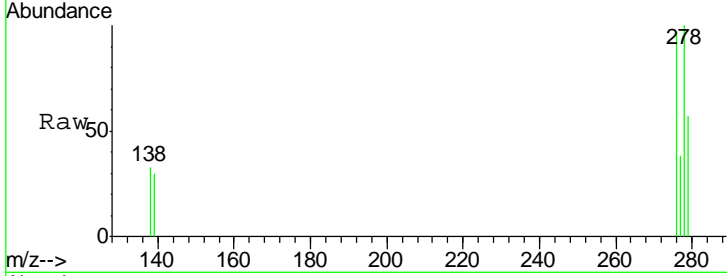
Tgt Ion	Resp	Lower	Upper
276	100		
138	22.7	16.3	24.5
277	26.0	20.0	30.0





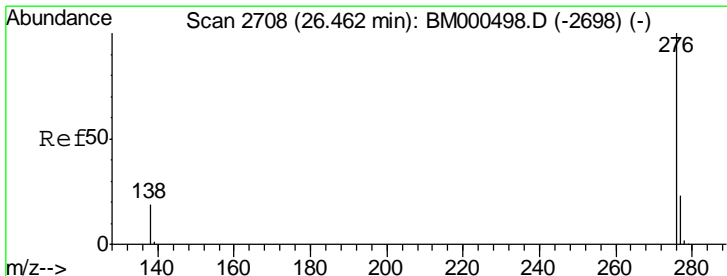
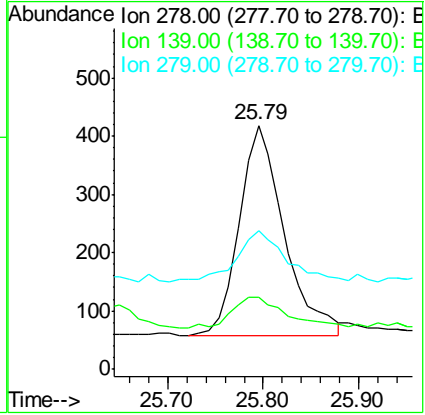
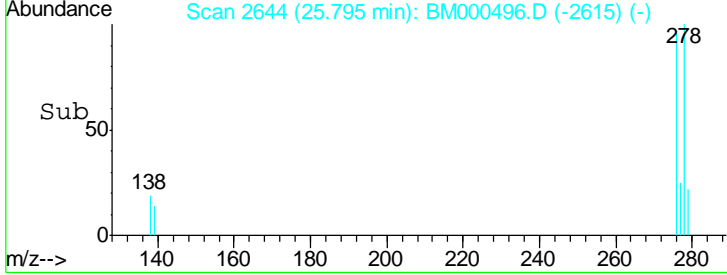
#25
 Dibenzo(a,h)anthracene
 Concen: 0.02 ng/ul
 RT: 25.79 min Scan# 2644
 Delta R.T. -0.00 min
 Lab File: BM000496.D
 Acq: 12 Feb 2015 02:54

Instrument :
 BNA_M
 ClientSampled :
 SBLK18

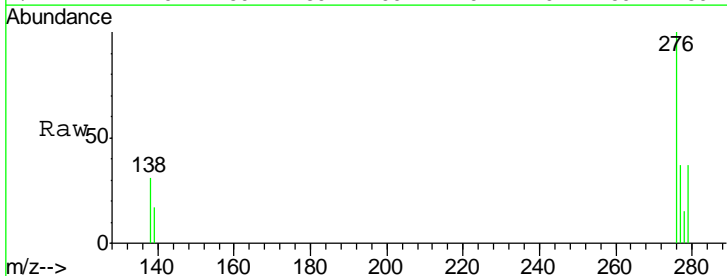


Tgt Ion: 278 Resp: 1178
 Ion Ratio Lower Upper
 278 100
 139 29.7 13.4 20.0#
 279 56.9 21.3 31.9#

Manual Integrations
 APPROVED
 apatel
 2/12/2015 4:10:57 PM



#26
 Benzo(g,h,i)perylene
 Concen: 0.02 ng/ul
 RT: 26.47 min Scan# 2709
 Delta R.T. -0.00 min
 Lab File: BM000496.D
 Acq: 12 Feb 2015 02:54



Tgt Ion: 276 Resp: 1276
 Ion Ratio Lower Upper
 276 100
 277 36.5 20.2 30.4#
 138 31.1 16.0 24.0#

