

Data Path : Z:\svoasrv\HPCHEM1\BNA_M\Data\BM021423\
 Data File : BM038735.D
 Acq On : 14 Feb 2023 18:10
 Operator : CG/JU
 Sample : 01542-01
 Misc :
 ALS Vial : 13 Sample Multiplier: 1

Instrument :
 BNA_M
 ClientSampleId :
 SOIL

Integration Parameters: rteint.p
 Integrator: RTE
 Smoothing : ON Filtering: 5
 Sampling : 1 Min Area: 3 % of largest Peak
 Start Thrs: 0.2 Max Peaks: 100
 Stop Thrs : 0 Peak Location: TOP

If leading or trailing edge < 100 prefer < Baseline drop else tangent >
 Peak separation: 5

Method : Z:\svoasrv\HPCHEM1\BNA_M\Methods\8270-BM020123.M
 Title : ASP BNA STANDARDS FOR 5 POINT CALIBRATION

Signal : TIC: BM038735.D\data.ms

peak #	R.T. min	first scan	max scan	last scan	PK TY	peak height	corr. area	corr. % max.	% of total
1	4.987	298	306	313	rBV	203439	270682	19.71%	3.337%
2	5.457	380	386	396	rBV	596496	806877	58.75%	9.947%
3	7.075	652	661	676	rBV	528291	802739	58.45%	9.896%
4	7.898	796	801	810	rVB	138912	202884	14.77%	2.501%
5	9.075	994	1001	1012	rBV	295617	474265	34.53%	5.847%
6	10.710	1272	1279	1287	rBV	144779	239762	17.46%	2.956%
7	13.163	1690	1696	1709	rBV	813710	1147362	83.55%	14.145%
8	14.539	1923	1930	1940	rBV	221035	310055	22.58%	3.822%
9	15.898	2156	2161	2168	rVB	39973	53578	3.90%	0.661%
10	16.027	2177	2183	2193	rBV	690121	924866	67.35%	11.402%
11	17.286	2390	2397	2405	rBV	235979	328820	23.94%	4.054%
12	18.168	2542	2547	2558	rBV	68465	102300	7.45%	1.261%
13	19.445	2760	2764	2770	rBV2	31434	44057	3.21%	0.543%
14	19.721	2807	2811	2818	rVB	10825	16280	1.19%	0.201%
15	19.904	2836	2842	2848	rBV	1153046	1373322	100.00%	16.931%
16	21.156	3051	3055	3062	rBV4	37343	51690	3.76%	0.637%
17	21.462	3102	3107	3112	rBV	337019	409610	29.83%	5.050%
18	23.839	3505	3511	3522	rVB2	282347	552212	40.21%	6.808%

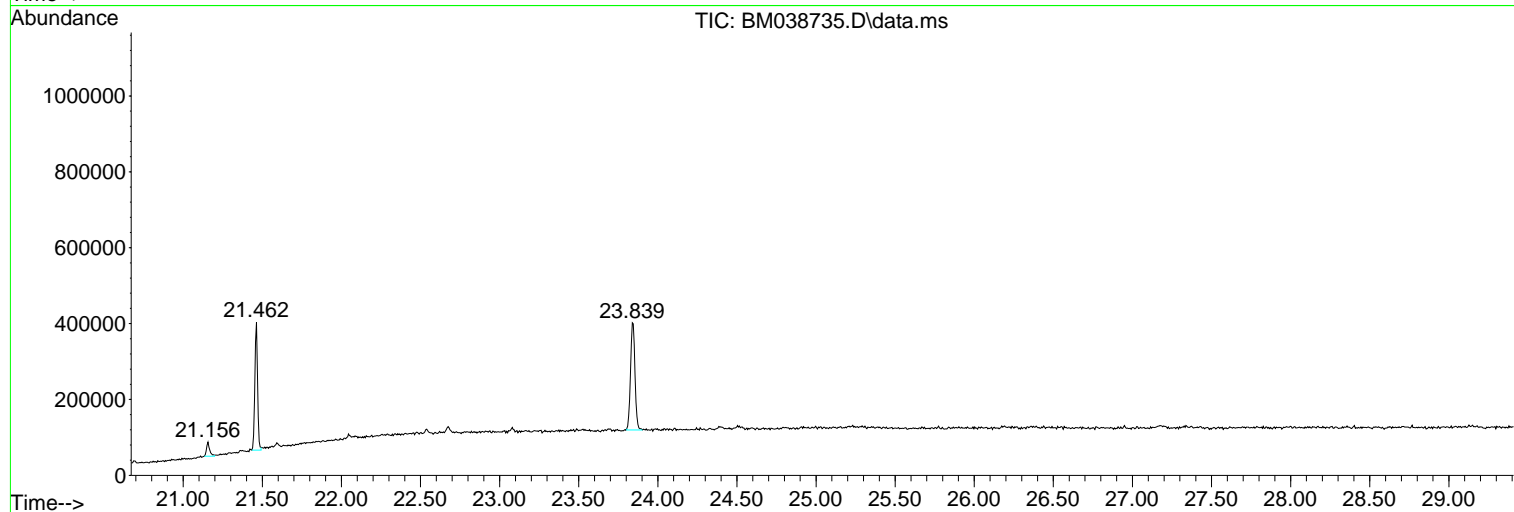
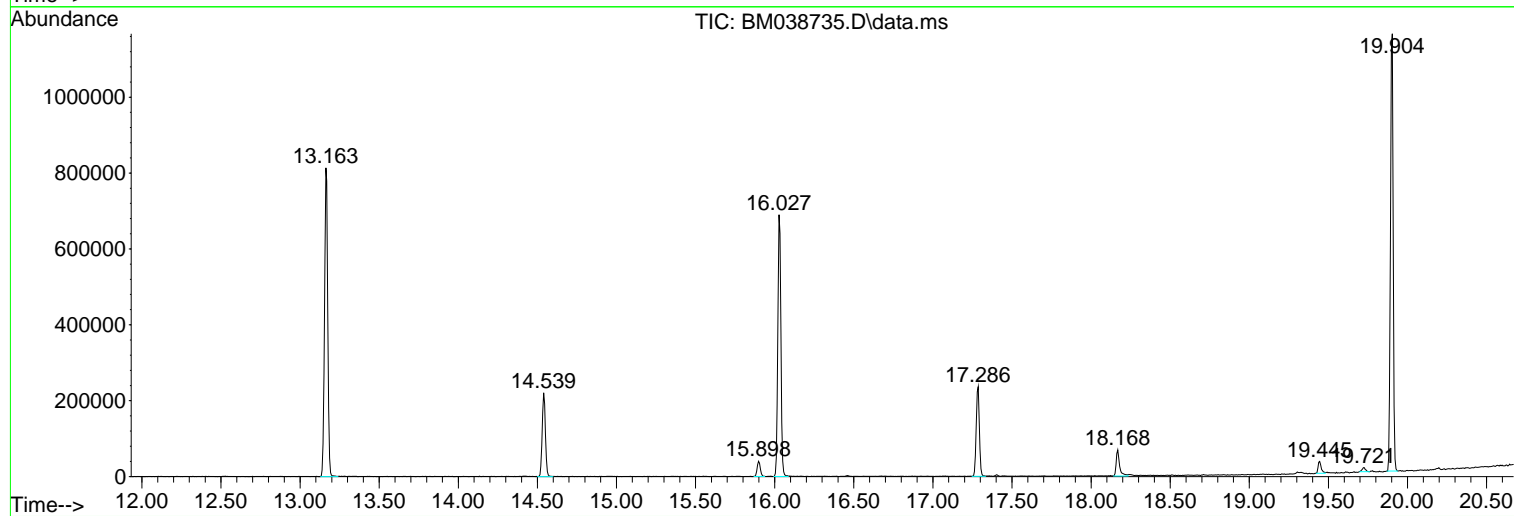
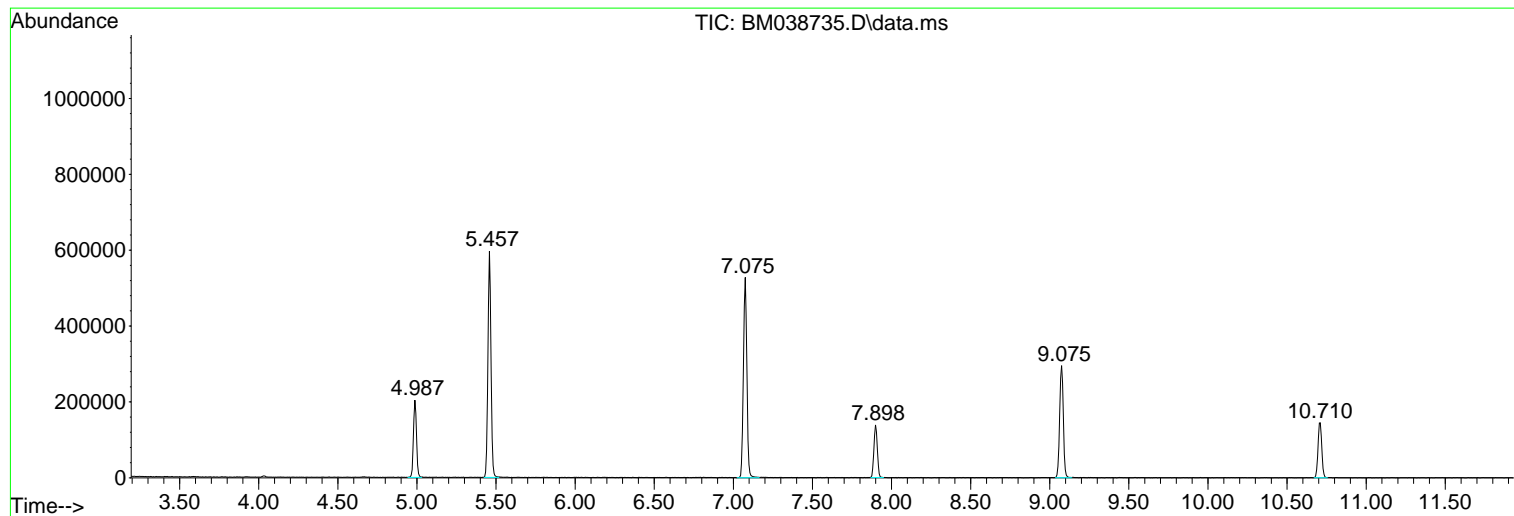
Sum of corrected areas: 8111361

Data Path : Z:\svoasrv\HPCHEM1\BNA_M\Data\BM021423\
Data File : BM038735.D
Acq On : 14 Feb 2023 18:10
Operator : CG/JU
Sample : 01542-01
Misc :
ALS Vial : 13 Sample Multiplier: 1

Instrument :
BNA_M
ClientSampleId :
SOIL

Quant Method : Z:\svoasrv\HPCHEM1\BNA_M\Methods\8270-BM020123.M
Quant Title : ASP BNA STANDARDS FOR 5 POINT CALIBRATION

TIC Library : C:\Database\NIST20.L
TIC Integration Parameters: LSCINT.P



Data Path : Z:\svoasrv\HPCHEM1\BNA_M\Data\BM021423\
 Data File : BM038735.D
 Acq On : 14 Feb 2023 18:10
 Operator : CG/JU
 Sample : 01542-01
 Misc :
 ALS Vial : 13 Sample Multiplier: 1

Instrument :
 BNA_M
 ClientSampleId :
 SOIL

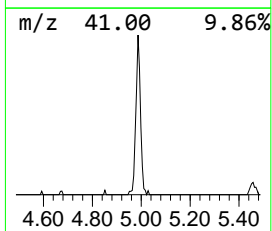
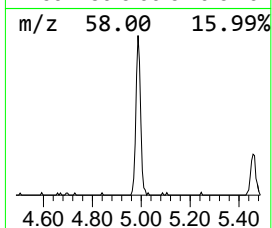
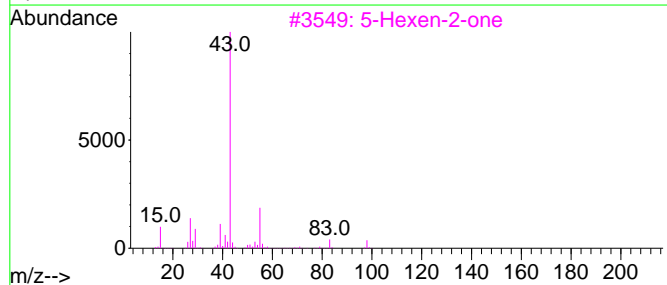
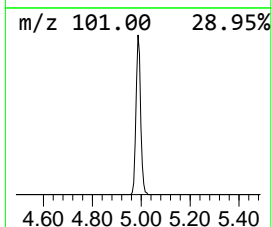
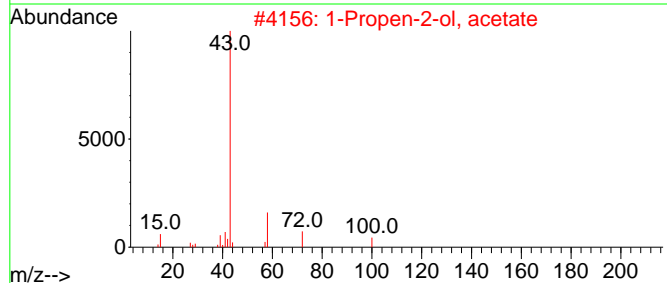
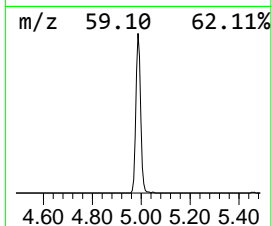
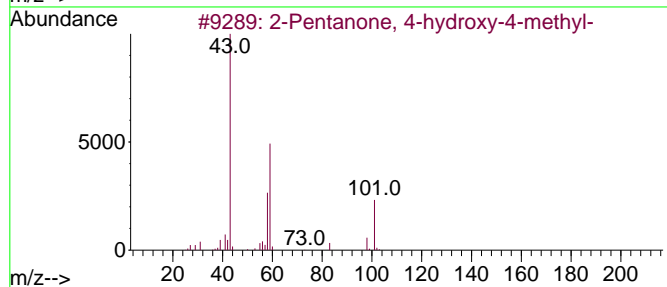
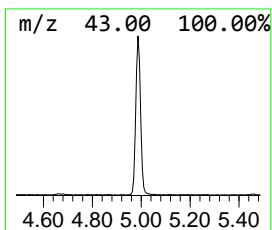
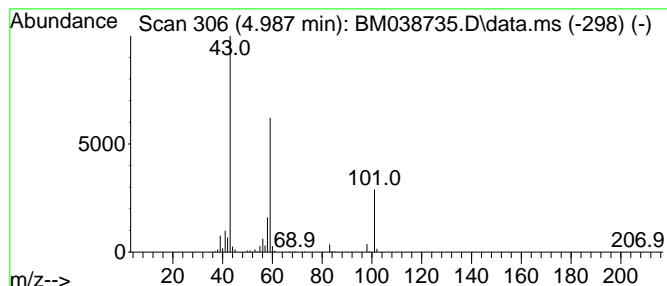
Quant Method : Z:\svoasrv\HPCHEM1\BNA_M\Methods\8270-BM020123.M
 Quant Title : ASP BNA STANDARDS FOR 5 POINT CALIBRATION

TIC Library : C:\Database\NIST20.L
 TIC Integration Parameters: LSCINT.P

 Peak Number 1 2-Pentanone, 4-hydroxy-4-me... Concentration Rank 1

R.T.	EstConc	Area	Relative to ISTD	R.T.
4.987	26.68 ng	270682	1,4-Dichlorobenzene-d4	7.898

Hit#	of 5	Tentative ID	MW	MolForm	CAS#	Qual
1		2-Pentanone, 4-hydroxy-4-methyl-	116	C6H12O2	000123-42-2	56
2		1-Propen-2-ol, acetate	100	C5H8O2	000108-22-5	10
3		5-Hexen-2-one	98	C6H10O	000109-49-9	9
4		4-Penten-2-one, 4-methyl-	98	C6H10O	003744-02-3	9
5		Butane, 1-ethoxy-	102	C6H14O	000628-81-9	9



Data Path : Z:\svoasrv\HPCHEM1\BNA_M\Data\BM021423\
 Data File : BM038735.D
 Acq On : 14 Feb 2023 18:10
 Operator : CG/JU
 Sample : 01542-01
 Misc :
 ALS Vial : 13 Sample Multiplier: 1

Instrument :
 BNA_M
 ClientSampleId :
 SOIL

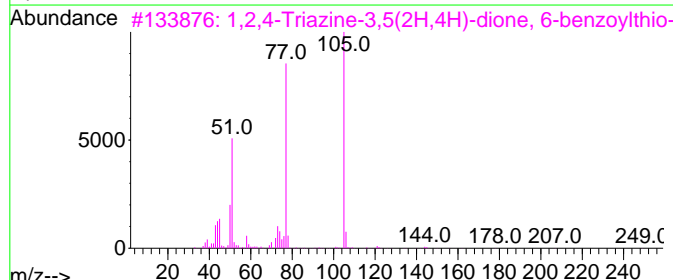
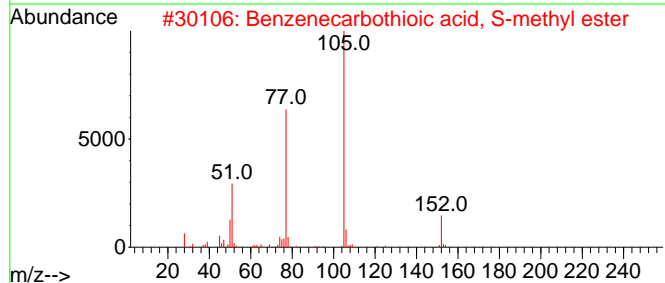
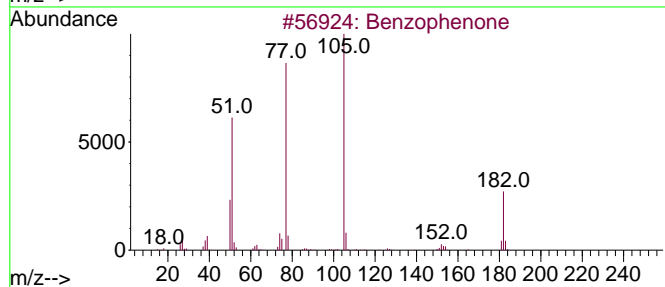
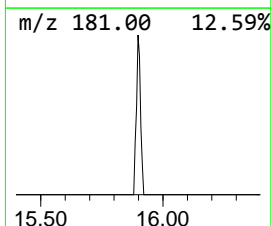
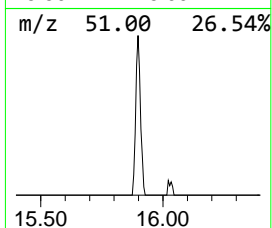
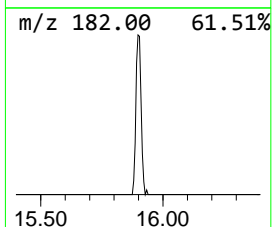
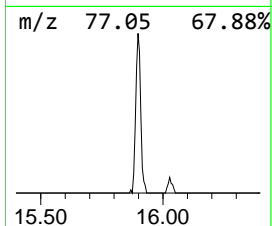
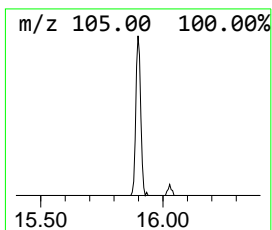
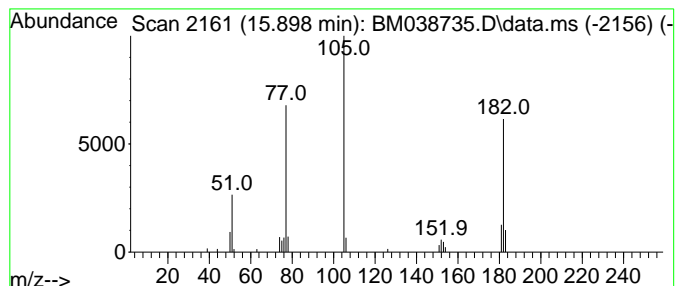
Quant Method : Z:\svoasrv\HPCHEM1\BNA_M\Methods\8270-BM020123.M
 Quant Title : ASP BNA STANDARDS FOR 5 POINT CALIBRATION

TIC Library : C:\Database\NIST20.L
 TIC Integration Parameters: LSCINT.P

 Peak Number 2 Benzophenone Concentration Rank 3

R.T.	EstConc	Area	Relative to ISTD	R.T.
15.898	3.46 ng	53578	Acenaphthene-d10	14.539

Hit#	of 5	Tentative ID	MW	MolForm	CAS#	Qual
1		Benzophenone	182	C13H10O	000119-61-9	95
2		Benzenecarbothioic acid, S-methy...	152	C8H8OS	005925-68-8	47
3		1,2,4-Triazine-3,5(2H,4H)-dione, ...	249	C10H7N3O3S	024168-34-1	43
4		Benzoic acid, phenyl ester	198	C13H10O2	000093-99-2	43
5		Benzenecarbothioic acid	138	C7H6OS	000098-91-9	43



Data Path : Z:\svoasrv\HPCHEM1\BNA_M\Data\BM021423\
 Data File : BM038735.D
 Acq On : 14 Feb 2023 18:10
 Operator : CG/JU
 Sample : 01542-01
 Misc :
 ALS Vial : 13 Sample Multiplier: 1

Instrument :
 BNA_M
 ClientSampleId :
 SOIL

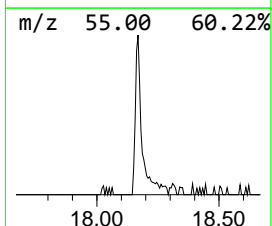
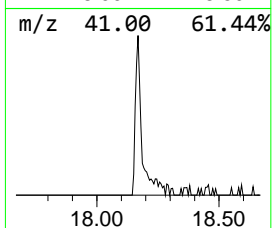
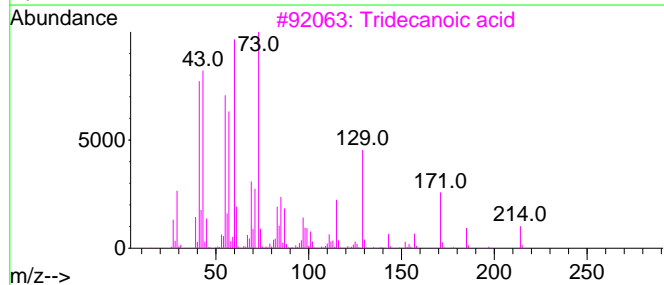
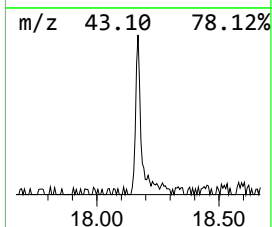
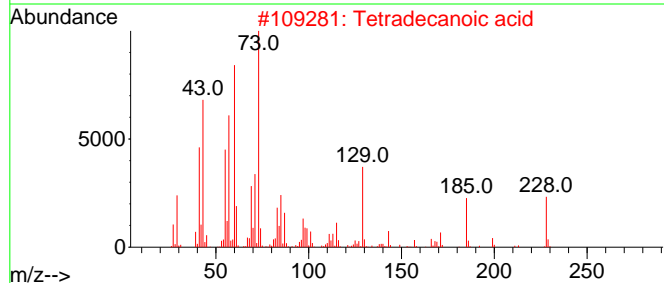
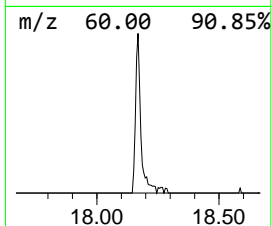
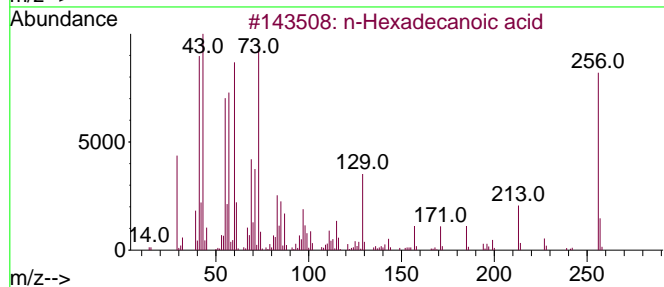
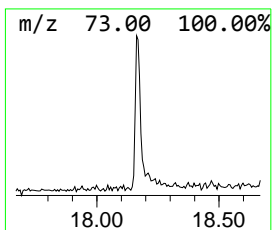
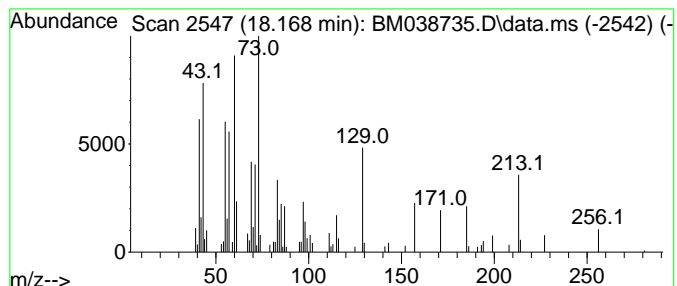
Quant Method : Z:\svoasrv\HPCHEM1\BNA_M\Methods\8270-BM020123.M
 Quant Title : ASP BNA STANDARDS FOR 5 POINT CALIBRATION

TIC Library : C:\Database\NIST20.L
 TIC Integration Parameters: LSCINT.P

 Peak Number 3 n-Hexadecanoic acid Concentration Rank 2

R.T.	EstConc	Area	Relative to ISTD	R.T.
18.168	6.22 ng	102300	Phenanthrene-d10	17.286

Hit#	of	5	Tentative ID	MW	MolForm	CAS#	Qual
1			n-Hexadecanoic acid	256	C16H32O2	000057-10-3	97
2			Tetradecanoic acid	228	C14H28O2	000544-63-8	68
3			Tridecanoic acid	214	C13H26O2	000638-53-9	68
4			Pentadecanoic acid	242	C15H30O2	001002-84-2	62
5			n-Decanoic acid	172	C10H20O2	000334-48-5	43



Data Path : Z:\svoasrv\HPCHEM1\BNA_M\Data\BM021423\
 Data File : BM038735.D
 Acq On : 14 Feb 2023 18:10
 Operator : CG/JU
 Sample : 01542-01
 Misc :
 ALS Vial : 13 Sample Multiplier: 1

Instrument :
 BNA_M
 ClientSampleId :
 SOIL

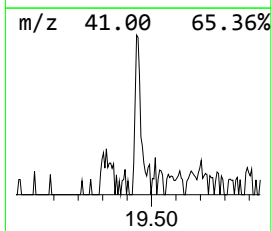
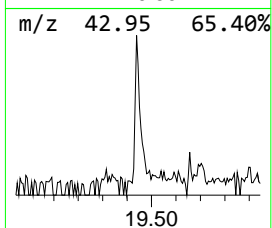
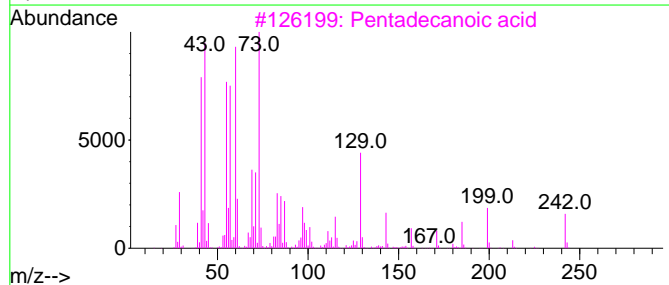
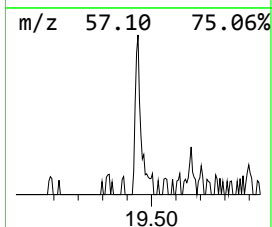
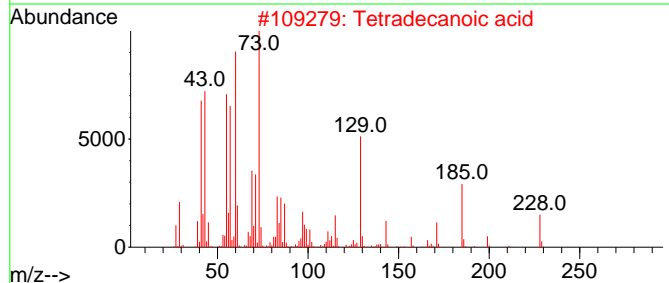
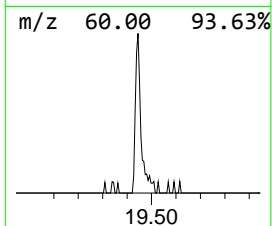
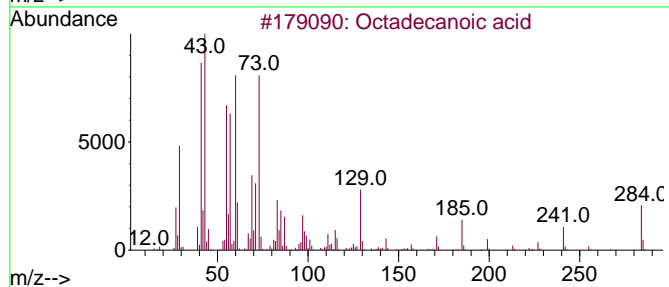
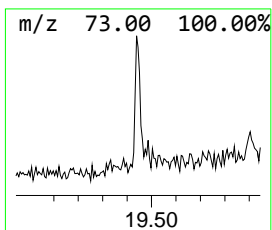
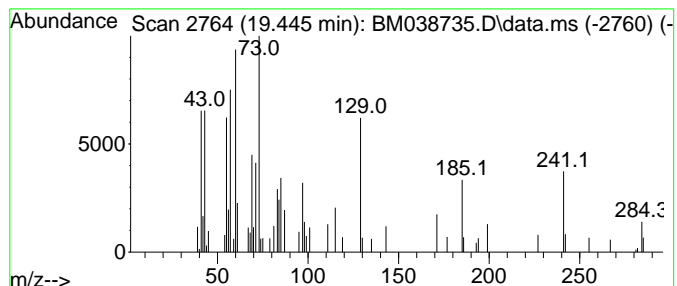
Quant Method : Z:\svoasrv\HPCHEM1\BNA_M\Methods\8270-BM020123.M
 Quant Title : ASP BNA STANDARDS FOR 5 POINT CALIBRATION

TIC Library : C:\Database\NIST0.L
 TIC Integration Parameters: LSCINT.P

 Peak Number 4 Octadecanoic acid Concentration Rank 5

R.T.	EstConc	Area	Relative to ISTD	R.T.
19.445	2.15 ng	44057	Chrysene-d12	21.462

Hit#	of 5	Tentative ID	MW	MolForm	CAS#	Qual
1		Octadecanoic acid	284	C18H36O2	000057-11-4	95
2		Tetradecanoic acid	228	C14H28O2	000544-63-8	74
3		Pentadecanoic acid	242	C15H30O2	001002-84-2	64
4		Undecanoic acid	186	C11H22O2	000112-37-8	58
5		n-Hexadecanoic acid	256	C16H32O2	000057-10-3	52



Data Path : Z:\svoasrv\HPCHEM1\BNA_M\Data\BM021423\
 Data File : BM038735.D
 Acq On : 14 Feb 2023 18:10
 Operator : CG/JU
 Sample : 01542-01
 Misc :
 ALS Vial : 13 Sample Multiplier: 1

Instrument :
 BNA_M
 ClientSampleId :
 SOIL

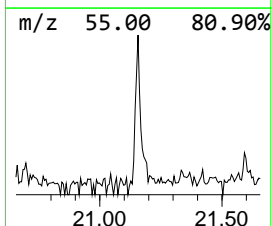
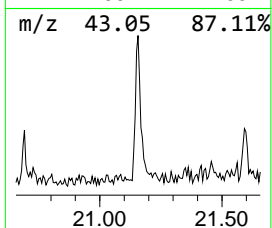
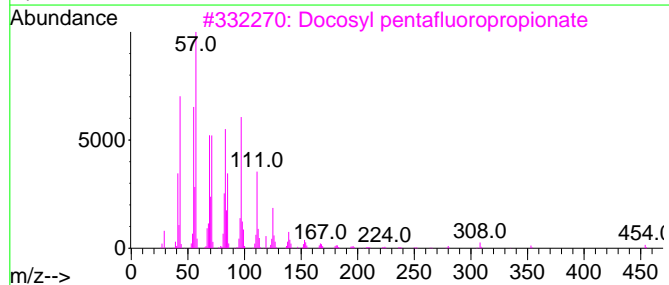
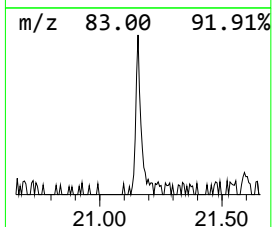
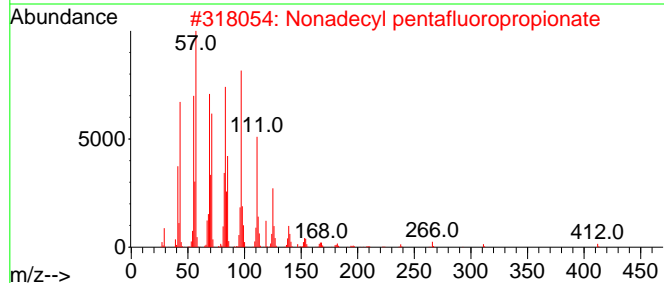
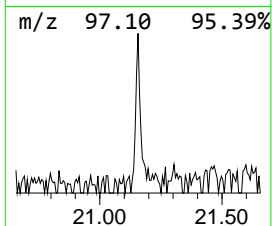
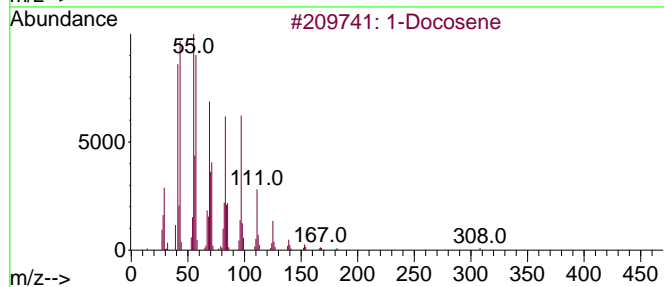
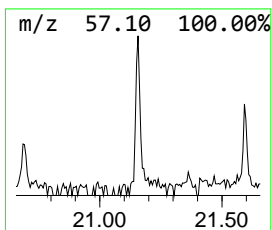
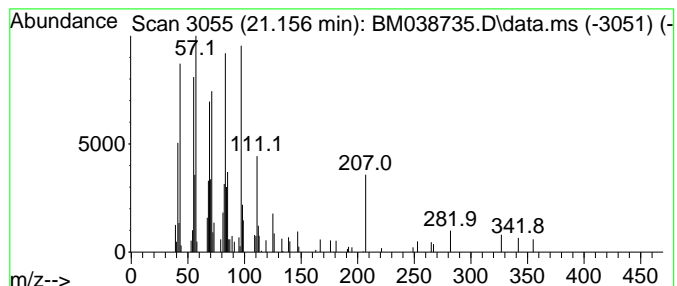
Quant Method : Z:\svoasrv\HPCHEM1\BNA_M\Methods\8270-BM020123.M
 Quant Title : ASP BNA STANDARDS FOR 5 POINT CALIBRATION

TIC Library : C:\Database\NIST20.L
 TIC Integration Parameters: LSCINT.P

 Peak Number 5 1-Docosene Concentration Rank 4

R.T.	EstConc	Area	Relative to ISTD	R.T.
21.156	2.52 ng	51690	Chrysene-d12	21.462

Hit#	of	5	Tentative ID	MW	MolForm	CAS#	Qual
1			1-Docosene	308	C22H44	001599-67-3	90
2			Nonadecyl pentafluoropropionate	430	C22H39F5O2	1000351-88-8	90
3			Docosyl pentafluoropropionate	472	C25H45F5O2	1000351-80-9	83
4			Trifluoroacetoxy hexadecane	338	C18H33F3O2	006222-03-3	81
5			Pentafluoropropionic acid, hexad...	388	C19H33F5O2	006222-07-7	74



Data Path : Z:\svoasrv\HPCHEM1\BNA_M\Data\BM021423\
Data File : BM038735.D
Acq On : 14 Feb 2023 18:10
Operator : CG/JU
Sample : 01542-01
Misc :
ALS Vial : 13 Sample Multiplier: 1

Instrument :
BNA_M
ClientSampleId :
SOIL

Quant Method : Z:\svoasrv\HPCHEM1\BNA_M\Methods\8270-BM020123.M
Quant Title : ASP BNA STANDARDS FOR 5 POINT CALIBRATION

TIC Library : C:\Database\NIST20.L
TIC Integration Parameters: LSCINT.P

TIC Top Hit name	RT	EstConc	Units	Response	--Internal Standard--			
					#	RT	Resp	Conc
2-Pentanone, 4-...	4.987	26.7	ng	270682	1	7.898	202884	20.0
Benzophenone	15.898	3.5	ng	53578	3	14.539	310055	20.0
n-Hexadecanoic ...	18.168	6.2	ng	102300	4	17.286	328820	20.0
Octadecanoic acid	19.445	2.1	ng	44057	5	21.462	409610	20.0
1-Docosene	21.156	2.5	ng	51690	5	21.462	409610	20.0