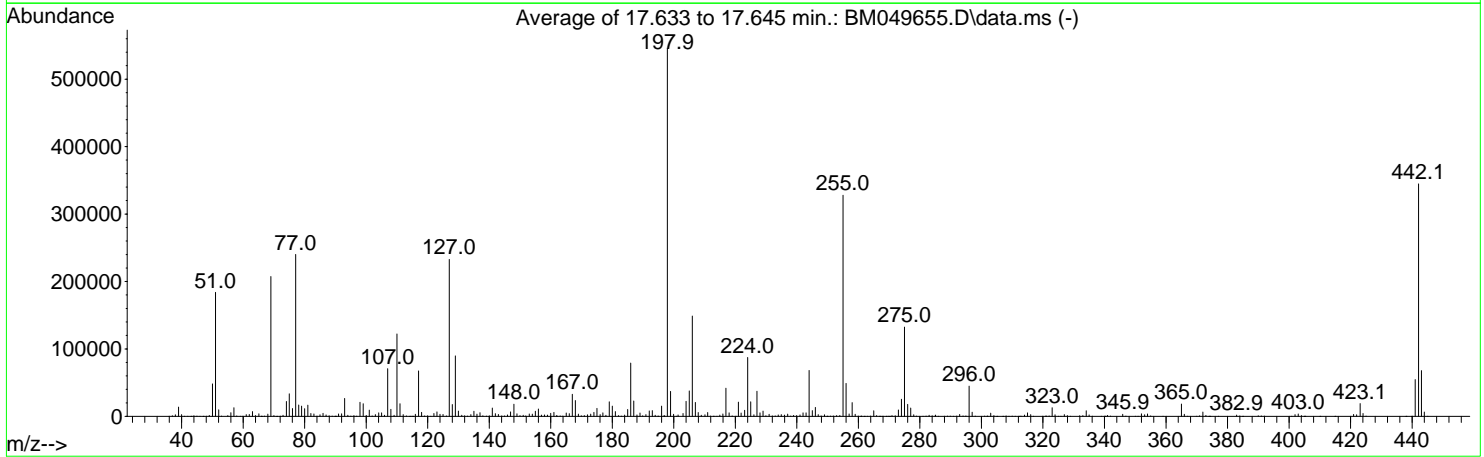
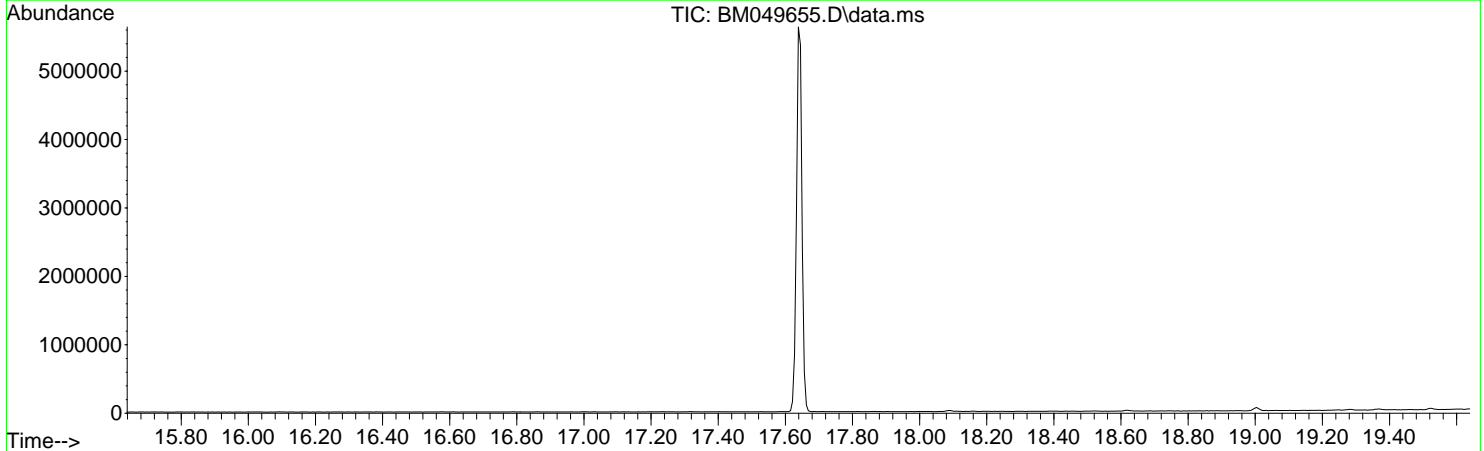


Data Path : Z:\svoasrv\HPCHEM1\BNA_M\Data\BM021425\
 Data File : BM049655.D
 Acq On : 14 Feb 2025 11:39
 Operator : RC/JU
 Sample : DFTPP068
 Misc :
 ALS Vial : 1 Sample Multiplier: 1

Instrument :
 BNA_M
 ClientSampleId :
 DFTPP068

Integration File: LSCINT.P

Method : Z:\svoasrv\HPCHEM1\BNA_M\Methods\SFAM-EPA-BM021425.MA.M
 Title : SVOA CALIBRATION
 Last Update : Tue Feb 18 12:12:53 2025



AutoFind: Scans 2490, 2491, 2492; Background Corrected with Scan 2485

Target Mass	Rel. to Mass	Lower Limit%	Upper Limit%	Rel. Abn%	Raw Abn	Result Pass/Fail
51	198	10	80	33.7	183855	PASS
68	69	0.00	2	1.6	3408	PASS
69	198	0.00	100	38.0	207326	PASS
70	69	0.00	2	0.6	1201	PASS
127	198	10	80	42.7	232853	PASS
197	198	0.00	2	0.2	1048	PASS
198	198	100	100	100.0	545515	PASS
199	198	5	9	6.8	37144	PASS
275	198	10	60	24.3	132288	PASS
365	198	1	100	3.4	18310	PASS
441	198	0.01	100	10.0	54611	PASS
442	198	50	100	63.2	344699	PASS
443	442	15	24	19.7	67891	PASS

m/z	Abundance
36.00	167.0
37.80	155.0
38.90	213.0
40.00	5663.0
40.90	240.0
43.10	319.0
44.00	7524.0
44.90	182.0
47.00	243.0
48.90	285.0
50.90	401.0
69.10	162.0
72.90	466.0
75.00	176.0
76.90	264.0
78.00	164.0
83.70	263.0
84.00	255.0
95.90	201.0
133.00	287.0
146.80	170.0
167.00	381.0
168.10	154.0
191.00	175.0
193.10	163.0
193.80	166.0
207.00	2383.0
207.90	392.0
209.00	409.0
281.00	771.0

Instrument :
BNA_M
ClientSampleId :
DFTPP068

m/z	Abundance
36.00	359.0
36.90	710.0
38.00	2114.0
39.10	11908.0
40.00	7397.0
40.90	498.0
42.00	254.0
43.10	370.0
44.00	8013.0
45.00	437.0
46.00	164.0
47.00	261.0
49.10	1501.0
50.00	38704.0
51.00	145664.0
52.10	8340.0
53.00	193.0
54.90	1115.0
56.00	4284.0
57.00	9729.0
57.90	575.0
59.10	175.0
59.90	169.0
61.00	2162.0
62.00	2566.0
63.00	6237.0
64.00	998.0
65.10	3217.0
65.90	317.0
67.00	401.0
68.00	2328.0
69.00	163584.0
70.00	1117.0
73.10	1783.0
74.00	17800.0
75.00	26776.0
76.00	9243.0
77.10	182528.0
78.10	13103.0
79.00	11961.0
80.00	9081.0
81.00	12945.0
82.00	3011.0
83.00	2790.0
84.00	631.0
85.00	1711.0
85.90	3410.0
86.90	1915.0
87.90	1033.0
88.90	437.0
89.80	160.0
91.00	2371.0
92.00	2903.0
93.00	20296.0
94.00	1228.0
95.10	300.0
96.10	1175.0
96.90	470.0
98.00	15786.0
99.00	15689.0
100.00	1135.0
101.00	6908.0
101.90	676.0
103.00	1799.0
104.10	3482.0
105.00	3572.0
105.90	1146.0
107.00	51264.0
108.00	7733.0
109.00	1209.0
110.00	89440.0
111.00	13433.0
112.00	1788.0
113.10	637.0
114.90	371.0
116.00	2240.0
117.00	49472.0
118.00	4453.0
119.00	466.0
120.00	681.0
120.90	168.0
122.00	3144.0
123.00	4815.0
124.00	2184.0
125.00	2255.0
126.10	607.0
127.00	164352.0
128.00	13234.0
129.00	64792.0
129.90	5357.0
131.10	1220.0
132.00	856.0

Instrument :
BNA_M
ClientSampleId :
DFTPP068

132.90	545.0
134.00	1867.0
135.00	5202.0
136.00	2310.0
137.00	4421.0
137.90	850.0
139.00	376.0
139.90	587.0
141.00	8413.0
142.00	2987.0
142.90	2196.0
144.00	544.0
144.90	558.0
145.90	1552.0
147.00	4542.0
148.00	13121.0
149.00	3029.0
150.00	1012.0
151.00	946.0
151.80	509.0
153.00	2435.0
154.00	2017.0
155.00	4652.0
156.00	7002.0
156.90	1143.0
157.90	1492.0
158.90	1341.0
160.00	3123.0
161.00	4116.0
161.90	1203.0
163.10	523.0
163.90	463.0
165.00	3098.0
166.00	2809.0
167.00	22584.0
168.00	18712.0
169.00	2530.0
169.90	600.0
170.90	820.0
171.90	1708.0
173.00	2434.0
174.00	3779.0
175.00	7514.0
176.00	1586.0
176.90	3156.0
178.00	921.0
179.00	14619.0
180.00	10580.0
181.00	4666.0
182.00	930.0
183.00	315.0
184.00	1074.0
185.00	6219.0
186.00	51792.0
187.00	14848.0
188.00	1528.0
189.00	3621.0
189.90	691.0
190.90	1947.0
192.00	5392.0
193.00	5720.0
194.00	1238.0
194.90	368.0
196.00	8471.0
197.90	331776.0
199.00	23072.0
200.00	2306.0
201.40	1191.0
203.00	2497.0
204.00	13685.0
205.00	22840.0
206.00	91648.0
207.00	15638.0
208.00	4110.0
209.00	1467.0
210.20	1418.0
211.00	3834.0
212.90	272.0
214.90	1136.0
215.90	1984.0
216.90	25664.0
218.00	3557.0
218.90	350.0
221.00	12837.0
221.90	2955.0
223.00	5846.0
224.00	52240.0
225.00	13397.0
226.00	1438.0
227.00	21672.0
228.00	3015.0
229.00	4673.0
229.90	653.0
231.00	1753.0
232.00	248.0
232.90	500.0

Instrument :
BNA_M
ClientSampleId :
DFTPP068

234.00	1229.0
235.00	1069.0
235.90	1072.0
237.00	2051.0
238.00	176.0
239.00	730.0
240.00	775.0
240.90	727.0
242.00	3676.0
243.00	2939.0
244.00	39024.0
245.00	5198.0
246.00	7545.0
246.90	1533.0
248.00	218.0
248.90	1082.0
249.80	242.0
250.90	419.0
251.80	392.0
252.90	731.0
253.90	1117.0
255.00	184384.0
256.00	28360.0
257.00	2246.0
258.00	11531.0
258.90	1731.0
259.90	352.0
260.80	371.0
263.90	177.0
265.00	5269.0
265.90	637.0
267.80	177.0
270.10	223.0
271.10	726.0
271.90	594.0
273.00	5243.0
274.00	13842.0
275.00	71360.0
276.00	9437.0
277.00	6209.0
278.00	1593.0
279.10	228.0
281.00	915.0
282.00	482.0
283.00	923.0
284.00	330.0
284.90	1203.0
289.00	264.0
289.80	186.0
291.00	298.0
291.90	291.0
292.90	1549.0
294.00	498.0
294.90	293.0
296.00	22952.0
297.00	3041.0
298.00	432.0
301.10	306.0
301.80	362.0
303.00	2268.0
304.00	681.0
308.10	320.0
308.90	158.0
310.10	323.0
313.00	272.0
314.10	931.0
315.00	2812.0
316.00	1521.0
316.90	263.0
321.00	377.0
322.00	277.0
323.00	6654.0
323.90	1419.0
325.00	179.0
325.80	198.0
326.90	1389.0
327.90	785.0
329.00	173.0
331.90	578.0
333.00	906.0
334.00	4139.0
335.00	1245.0
341.10	572.0
342.00	157.0
345.90	1366.0
346.90	216.0
352.00	1702.0
353.00	1226.0
354.00	1718.0
354.90	392.0
359.00	196.0
365.00	8729.0
366.00	1310.0
367.10	152.0
370.00	229.0
370.90	395.0

Instrument :
BNA_M
ClientSampleId :
DFTPP068

372.00	3053.0
373.00	783.0
383.00	975.0
384.00	330.0
390.00	458.0
391.10	250.0
392.00	252.0
401.90	1071.0
403.00	1585.0
404.00	678.0
421.00	1208.0
422.00	1127.0
423.00	8101.0
424.00	2087.0
425.00	166.0
441.00	22064.0
442.10	129584.0
443.00	26712.0
444.10	2532.0

Instrument :

BNA_M

ClientSampleId :

DFTPP068

m/z	Abundance
35.90	351.0
37.00	1308.0
38.00	3053.0
39.00	16664.0
40.00	8832.0
41.00	638.0
42.00	238.0
42.90	407.0
44.00	8844.0
45.00	850.0
46.00	162.0
46.90	299.0
48.00	232.0
49.00	2017.0
50.00	59456.0
51.10	230336.0
52.10	11938.0
53.00	487.0
55.00	1333.0
56.00	6636.0
57.00	15689.0
58.00	672.0
59.00	424.0
60.00	379.0
61.00	2975.0
62.00	3379.0
63.10	8889.0
64.00	1460.0
65.10	4560.0
66.10	499.0
67.10	383.0
68.00	4459.0
69.00	256192.0
70.00	1504.0
73.00	2401.0
74.00	26312.0
75.00	40352.0
76.10	14474.0
77.10	299840.0
78.10	20752.0
79.00	18632.0
80.00	13892.0
81.00	20672.0
82.00	5360.0
83.00	4323.0
84.00	1145.0
85.00	3413.0
86.00	5656.0
87.00	2680.0
88.00	1101.0
88.90	522.0
90.00	234.0
91.00	5104.0
92.00	4586.0
93.00	33296.0
94.00	2207.0
95.00	831.0
96.00	1720.0
97.00	454.0
98.00	25608.0
99.00	21840.0
100.00	1880.0
101.00	11704.0
101.90	602.0
102.90	3508.0
104.00	6668.0
105.00	6211.0
106.00	2406.0
107.00	87312.0
108.00	11976.0
109.10	2180.0
110.00	150336.0
111.00	22688.0
112.00	3063.0
113.10	1025.0
114.10	370.0
114.90	471.0
116.00	4255.0
117.00	82088.0
118.00	6594.0
119.00	826.0
120.00	1172.0
121.00	268.0
122.00	5508.0
123.00	8429.0
124.00	4074.0
125.00	3734.0
126.10	899.0
127.00	288256.0
128.00	21040.0
129.00	109896.0
130.00	10202.0

Instrument :
BNA_M
ClientSampleId :
DFTPP068

131.00	1868.0
132.00	1032.0
133.00	938.0
134.00	2993.0
135.00	9282.0
136.00	4403.0
137.00	5950.0
138.00	1264.0
139.10	691.0
140.10	1277.0
141.00	16111.0
142.00	5576.0
142.90	3646.0
144.00	886.0
145.00	813.0
146.00	2790.0
147.00	8371.0
148.00	21840.0
149.00	4505.0
150.00	1263.0
151.10	2039.0
151.80	1098.0
153.00	4458.0
154.00	4251.0
155.00	9631.0
156.00	13824.0
157.00	2705.0
158.00	2582.0
158.90	2451.0
160.00	5666.0
161.00	7748.0
161.90	2230.0
163.00	788.0
164.00	685.0
165.00	5535.0
166.00	4738.0
167.00	41992.0
168.00	27120.0
169.00	3766.0
169.90	1009.0
170.90	1606.0
172.00	3181.0
173.00	4184.0
174.00	7293.0
175.00	15116.0
176.10	3373.0
177.00	6598.0
177.90	2029.0
179.00	26656.0
180.00	18592.0
181.00	8733.0
182.10	1382.0
182.90	645.0
184.00	2261.0
185.00	12716.0
186.00	95128.0
187.00	27736.0
188.00	2711.0
189.00	5815.0
189.90	882.0
191.00	3370.0
192.00	9089.0
193.00	11308.0
194.00	2198.0
195.10	842.0
196.00	18480.0
196.80	2811.0
197.90	671232.0
199.00	47128.0
200.00	3729.0
200.80	1074.0
201.40	2786.0
203.00	5849.0
204.00	27600.0
205.00	47584.0
206.00	182144.0
207.00	28216.0
208.00	7248.0
208.90	2212.0
210.20	2893.0
211.00	6493.0
211.90	1242.0
212.90	543.0
214.00	286.0
214.90	2147.0
216.00	4530.0
217.00	50176.0
218.00	6202.0
218.90	809.0
220.20	949.0
221.00	25336.0
221.90	6482.0
223.00	10694.0
224.00	107128.0
225.00	26944.0
226.00	2815.0

Instrument :
BNA_M
ClientSampleId :
DFTPP068

227.00	45936.0
228.00	6181.0
229.00	9608.0
230.00	1122.0
231.00	4545.0
232.00	867.0
233.00	718.0
233.90	2647.0
234.90	3593.0
236.00	2459.0
237.00	4130.0
238.00	518.0
238.90	1821.0
239.90	1299.0
241.00	2723.0
242.00	6399.0
243.00	5851.0
244.00	80440.0
245.00	10462.0
246.00	16952.0
246.90	3413.0
247.90	833.0
249.00	3166.0
250.00	518.0
251.00	669.0
252.00	477.0
253.00	1699.0
253.90	1349.0
255.00	392000.0
256.00	58168.0
257.00	4445.0
258.00	23848.0
259.00	4050.0
259.90	666.0
261.00	653.0
261.90	155.0
263.00	337.0
263.90	527.0
265.00	9796.0
266.00	1399.0
266.80	409.0
269.00	160.0
269.80	286.0
270.90	1605.0
272.00	1162.0
273.00	11836.0
274.00	30104.0
275.00	160448.0
276.00	21248.0
277.00	14665.0
278.00	2448.0
278.90	595.0
281.10	887.0
282.00	733.0
283.00	2161.0
284.00	1548.0
285.10	2502.0
286.00	489.0
287.90	245.0
288.90	656.0
289.90	471.0
290.90	332.0
292.00	511.0
293.00	3931.0
294.00	967.0
294.90	1069.0
296.00	53080.0
297.00	7565.0
297.90	434.0
301.00	665.0
302.00	850.0
303.00	6067.0
304.10	1630.0
306.90	176.0
308.00	822.0
309.00	291.0
309.90	555.0
311.00	229.0
312.00	166.0
312.80	540.0
314.00	1867.0
315.00	5998.0
316.00	2992.0
316.90	405.0
320.00	298.0
320.90	1367.0
322.00	918.0
323.00	14929.0
324.00	2686.0
325.00	352.0
325.90	287.0
327.00	3188.0
328.00	1431.0
328.90	191.0
332.00	977.0
333.00	1184.0

Instrument :

BNA_M

ClientSampleId :

DFTPP068

334.00	10453.0
335.00	2458.0
336.10	528.0
338.90	354.0
340.20	269.0
341.00	1431.0
342.00	444.0
346.00	4020.0
347.00	708.0
350.10	269.0
350.90	310.0
352.00	4750.0
353.00	2515.0
354.00	4182.0
355.00	1199.0
359.00	268.0
365.00	20440.0
365.90	3201.0
367.00	417.0
370.10	300.0
370.90	1276.0
372.00	7549.0
373.00	2024.0
374.20	360.0
377.00	227.0
383.00	2074.0
384.00	965.0
390.00	1046.0
391.00	889.0
391.90	487.0
400.90	379.0
402.00	3092.0
403.00	3979.0
404.00	1511.0
404.90	319.0
410.00	153.0
414.90	162.0
421.00	3354.0
422.00	2656.0
423.10	20256.0
424.10	5314.0
425.10	558.0
439.80	158.0
441.00	61600.0
442.10	381056.0
443.10	76552.0
444.00	7764.0
445.10	333.0

Instrument :
BNA_M
ClientSampleId :
DFTPP068

m/z	Abundance
36.00	327.0
37.00	676.0
38.00	2156.0
39.10	13164.0
40.00	8397.0
41.00	540.0
42.00	272.0
42.90	519.0
44.00	8912.0
45.10	703.0
45.90	164.0
47.00	246.0
48.10	257.0
49.00	1482.0
50.00	46536.0
51.10	176768.0
52.00	8804.0
53.00	471.0
55.10	1119.0
56.00	5502.0
57.00	12786.0
58.00	656.0
59.00	257.0
59.80	203.0
61.00	2490.0
62.00	2544.0
63.00	6598.0
64.00	901.0
65.10	3686.0
66.00	575.0
66.90	385.0
68.00	3438.0
69.00	202688.0
70.00	981.0
70.90	184.0
71.90	276.0
72.90	1942.0
74.10	21856.0
75.00	33584.0
76.10	11208.0
77.10	238592.0
78.10	17104.0
79.00	14732.0
80.00	11300.0
81.00	15944.0
82.00	4155.0
83.00	3661.0
84.00	765.0
85.00	2329.0
86.00	4749.0
87.00	2124.0
87.90	1024.0
89.00	378.0
91.00	3505.0
92.00	4234.0
93.00	26080.0
94.00	1650.0
94.90	342.0
96.00	1176.0
96.90	774.0
98.00	21112.0
99.00	18616.0
100.00	1211.0
101.00	9351.0
102.00	637.0
103.00	2742.0
104.00	5670.0
105.00	5648.0
106.00	1524.0
107.00	73720.0
108.00	11555.0
109.00	1579.0
110.00	126928.0
111.00	19864.0
112.00	2745.0
113.00	696.0
115.10	267.0
116.00	3022.0
117.00	70624.0
118.00	6624.0
119.00	690.0
120.00	850.0
121.10	382.0
122.00	4158.0
123.00	6553.0
124.00	3155.0
125.00	2929.0
126.00	639.0
127.00	245952.0
128.00	18288.0
129.00	94248.0
130.00	8167.0

Instrument :
BNA_M
ClientSampleId :
DFTPP068

131.00	1747.0
132.00	712.0
132.90	603.0
134.00	2724.0
135.00	8544.0
136.00	2997.0
137.00	6010.0
137.90	801.0
139.00	542.0
140.00	1188.0
141.00	12272.0
142.00	3735.0
143.00	3005.0
144.10	740.0
145.00	763.0
146.00	2222.0
147.00	7391.0
148.00	19520.0
149.00	3999.0
150.00	1021.0
151.00	1773.0
151.90	881.0
153.00	4177.0
154.00	3536.0
155.00	8396.0
156.00	11892.0
157.00	1975.0
158.00	2440.0
159.00	2258.0
160.00	4716.0
161.00	6223.0
162.10	1774.0
163.10	671.0
163.90	625.0
165.00	6070.0
166.00	4660.0
167.00	34776.0
168.00	25048.0
169.00	3921.0
169.90	1217.0
170.90	1154.0
171.90	2670.0
173.00	3483.0
174.00	6691.0
175.00	13271.0
176.00	2828.0
177.00	5712.0
177.90	2083.0
179.00	23240.0
180.00	16219.0
181.00	7881.0
182.00	1514.0
182.80	399.0
184.00	2223.0
185.00	11527.0
186.00	90488.0
187.00	25936.0
188.00	2304.0
189.00	5737.0
189.90	1073.0
191.00	3137.0
192.00	9568.0
193.00	9251.0
194.00	2361.0
194.90	1203.0
196.00	18360.0
197.00	3143.0
197.90	633536.0
198.90	41232.0
199.90	3029.0
201.40	2768.0
203.00	4669.0
204.00	25448.0
205.00	42864.0
206.00	172800.0
207.00	25400.0
208.00	7218.0
209.00	2324.0
210.00	2855.0
211.00	6592.0
213.10	597.0
214.00	483.0
215.00	2100.0
216.00	4204.0
217.00	49424.0
218.00	6171.0
219.00	664.0
221.00	25080.0
221.90	5881.0
223.00	10787.0
224.00	102680.0
225.00	24536.0
226.10	3024.0
227.00	44536.0
228.00	6571.0
229.00	9552.0

Instrument :
BNA_M
ClientSampleId :
DFTPP068

230.00	1190.0
231.00	3320.0
232.00	759.0
232.90	765.0
234.00	2787.0
235.00	3081.0
236.00	2399.0
237.00	3858.0
238.00	520.0
239.00	1792.0
239.90	1328.0
241.00	2725.0
242.00	5873.0
243.00	6739.0
244.00	84584.0
245.00	10303.0
246.00	15794.0
247.00	3209.0
247.90	820.0
249.00	3069.0
249.90	333.0
250.90	617.0
251.90	927.0
252.90	1565.0
254.00	1898.0
255.00	407488.0
256.00	60352.0
257.00	4288.0
258.00	25936.0
259.00	3198.0
260.00	467.0
260.90	812.0
263.00	242.0
263.90	781.0
265.00	10092.0
266.00	1304.0
267.00	294.0
267.80	152.0
269.90	682.0
271.00	1021.0
271.90	1188.0
273.00	11409.0
274.00	32088.0
275.00	165056.0
276.00	22776.0
277.00	16043.0
278.00	2923.0
278.90	632.0
281.00	1237.0
282.00	515.0
283.00	1889.0
284.00	1165.0
285.00	2957.0
286.00	550.0
288.00	150.0
288.90	652.0
289.90	617.0
290.90	511.0
292.00	824.0
293.00	3136.0
294.00	1016.0
295.00	636.0
296.00	58760.0
297.00	7694.0
297.90	700.0
301.00	603.0
301.90	969.0
303.00	5996.0
304.10	1558.0
305.00	252.0
307.90	876.0
308.90	377.0
310.10	591.0
311.00	188.0
312.10	151.0
312.90	491.0
313.90	2590.0
315.00	6554.0
316.00	3153.0
317.00	447.0
319.90	270.0
321.10	1547.0
322.00	628.0
323.00	16624.0
324.00	3272.0
325.10	313.0
325.90	293.0
327.00	3572.0
327.90	1505.0
328.80	307.0
332.00	1215.0
333.00	1481.0
334.10	10610.0
335.00	2650.0
336.10	339.0
339.00	321.0

Instrument :
BNA_M
ClientSampleId :
DFTPP068

339.90	359.0
341.00	2137.0
342.00	557.0
346.00	4021.0
346.90	481.0
350.00	251.0
350.90	317.0
352.00	5162.0
353.10	3307.0
354.00	4790.0
355.10	899.0
359.10	303.0
365.00	25760.0
366.00	4429.0
369.90	480.0
371.00	1164.0
372.00	8715.0
373.00	1613.0
373.90	176.0
377.10	264.0
382.90	2366.0
384.00	846.0
384.90	225.0
390.00	1189.0
391.00	883.0
392.00	569.0
400.90	608.0
402.00	3460.0
403.00	4866.0
404.10	1815.0
405.10	322.0
421.00	4176.0
422.00	3717.0
423.10	28536.0
424.00	5843.0
425.00	643.0
438.00	164.0
441.00	80168.0
442.10	523456.0
443.10	100408.0
444.00	9161.0
445.10	570.0

Instrument :

BNA_M

ClientSampleId :

DFTPP068