

Data Path : Z:\SVOASRV\HPCHEM1\BNA_M\DATA\BM021819\
 Data File : BM018842.D
 Acq On : 18 Feb 2019 17:23
 Operator : JU/SJ
 Sample : K1518-17
 Misc :
 ALS Vial : 10 Sample Multiplier: 1

Instrument :
 BNA_M
 ClientSampleId :
 TP-MH-C02

Quant Time: Feb 19 01:19:15 2019
 Quant Method : Z:\SVOASRV\HPCHEM1\BNA_M\METHODS\8270-BM021119.M
 Quant Title : ASP BNA STANDARDS FOR 5 POINT CALIBRATION
 QLast Update : Mon Feb 11 16:02:12 2019
 Response via : Initial Calibration

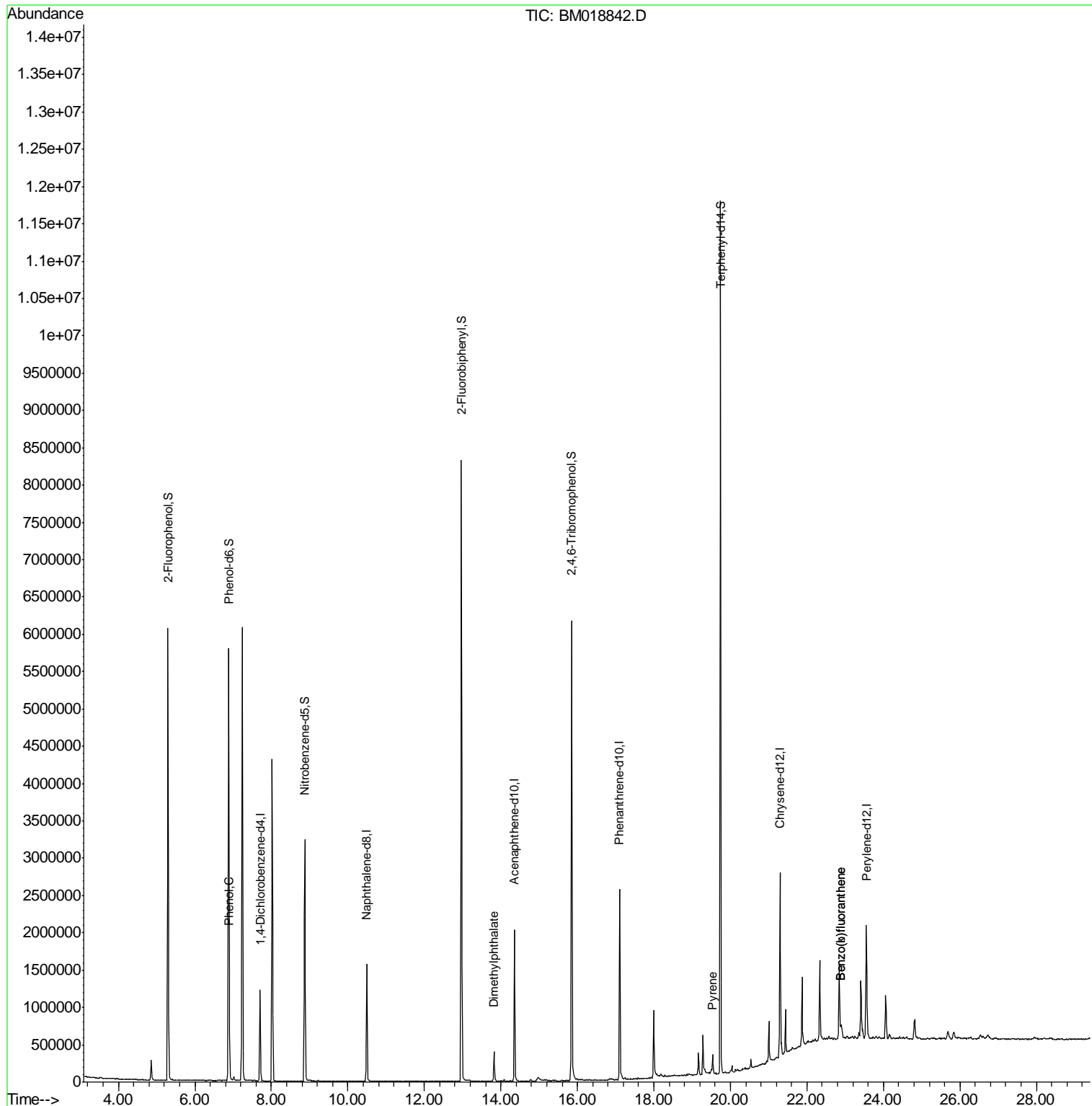
Internal Standards	R.T.	QIon	Response	Conc	Units	Dev(Min)
1) 1,4-Dichlorobenzene-d4	7.70	152	306738	20.00	ng	-0.01
21) Naphthalene-d8	10.49	136	1243280	20.00	ng	-0.01
39) Acenaphthene-d10	14.36	164	651299	20.00	ng	0.00
64) Phenanthrene-d10	17.10	188	1398728	20.00	ng	-0.01
76) Chrysene-d12	21.30	240	1088510	20.00	ng	0.00
87) Perylene-d12	23.56	264	1013724	20.00	ng	-0.01
System Monitoring Compounds						
5) 2-Fluorophenol	5.30	112	2339765	124.98	ng	0.00
7) Phenol-d6	6.88	99	3262123	123.69	ng	0.00
23) Nitrobenzene-d5	8.87	82	2060102	76.62	ng	-0.01
42) 2,4,6-Tribromophenol	15.85	330	1081989	115.25	ng	-0.01
45) 2-Fluorobiphenyl	12.97	172	3978056	81.08	ng	-0.01
79) Terphenyl-d14	19.74	244	5043481	95.58	ng	0.00
Target Compounds						
9) Benzaldehyde	6.88	77	8414	Below Cal		Qvalue # 11
10) Phenol	6.90	94	100371	3.617	ng	83
50) Dimethylphthalate	13.82	163	260135	4.793	ng	100
78) Pyrene	19.53	202	140635	2.225	ng	99
88) Benzo(b)fluoranthene	22.87	252	166668	2.874	ng	# 92
89) Benzo(k)fluoranthene	22.87	252	165906	2.873	ng	# 92

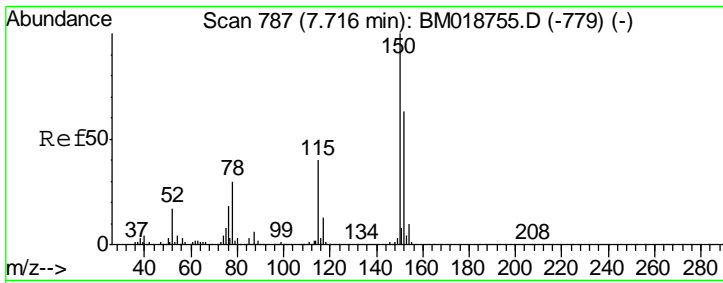
(#) = qualifier out of range (m) = manual integration (+) = signals summed

Data Path : Z:\SVOASRV\HPCHEM1\BNA_M\DATA\BM021819\
 Data File : BM018842.D
 Acq On : 18 Feb 2019 17:23
 Operator : JU/SJ
 Sample : K1518-17
 Misc :
 ALS Vial : 10 Sample Multiplier: 1

Instrument :
 BNA_M
 ClientSampled :
 TP-MH-C02

Quant Time: Feb 19 01:19:15 2019
 Quant Method : Z:\SVOASRV\HPCHEM1\BNA_M\METHODS\8270-BM021119.M
 Quant Title : ASP BNA STANDARDS FOR 5 POINT CALIBRATION
 QLast Update : Mon Feb 11 16:02:12 2019
 Response via : Initial Calibration

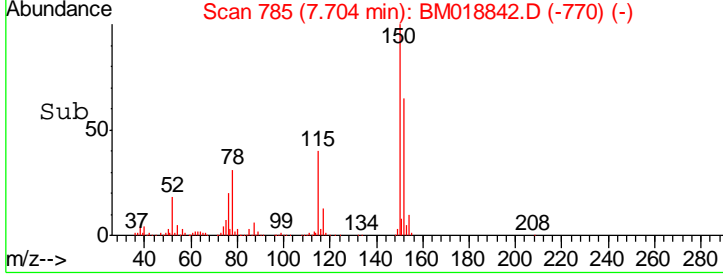
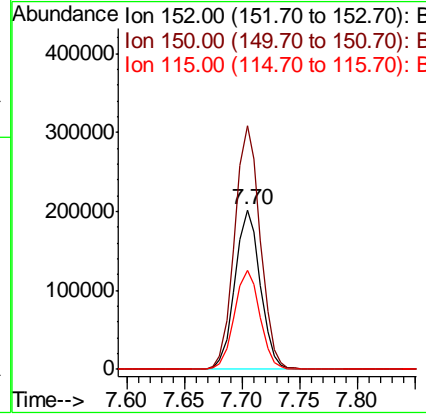
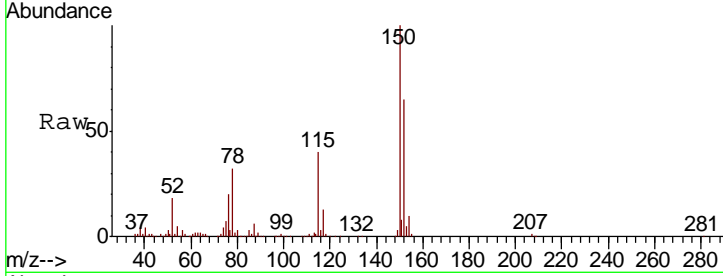




#1
 1,4-Dichlorobenzene-d4
 Concen: 20.000 ng
 RT: 7.70 min Scan# 785
 Delta R.T. -0.01 min
 Lab File: BM018842.D
 Acq: 18 Feb 2019 17:23

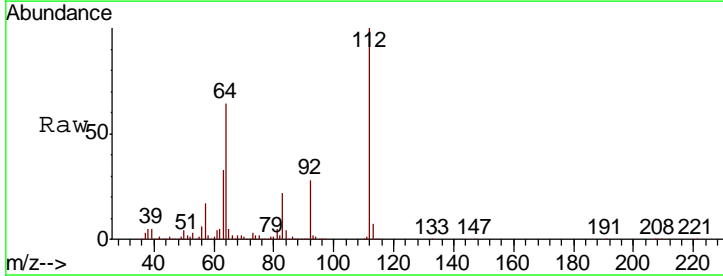
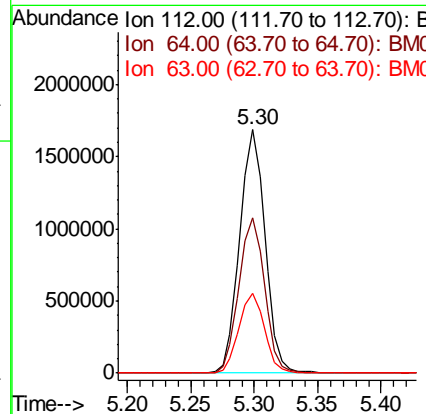
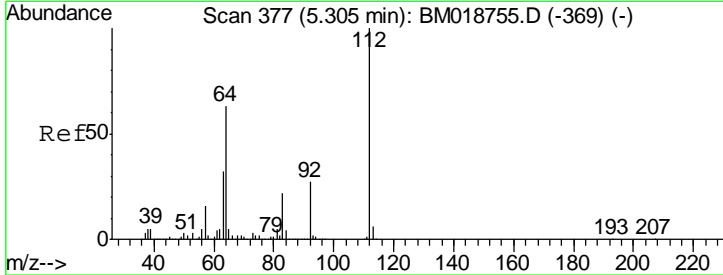
Instrument :
 BNA_M
ClientSampled :
 TP-MH-C02

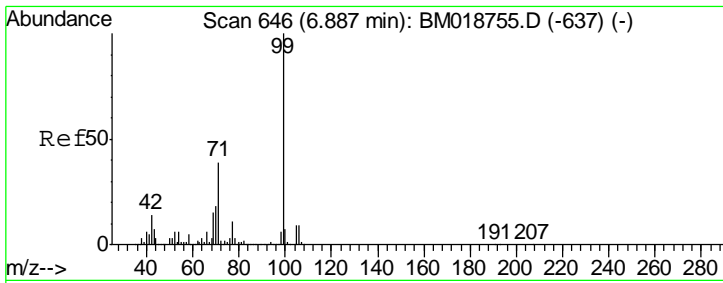
Tgt Ion	Resp	Lower	Upper
152	100		
150	152.7	127.3	190.9
115	61.8	50.8	76.2



#5
 2-Fluorophenol
 Concen: 124.981 ng
 RT: 5.30 min Scan# 376
 Delta R.T. -0.01 min
 Lab File: BM018842.D
 Acq: 18 Feb 2019 17:23

Tgt Ion	Resp	Lower	Upper
112	100		
64	64.0	50.6	75.8
63	33.0	25.7	38.5

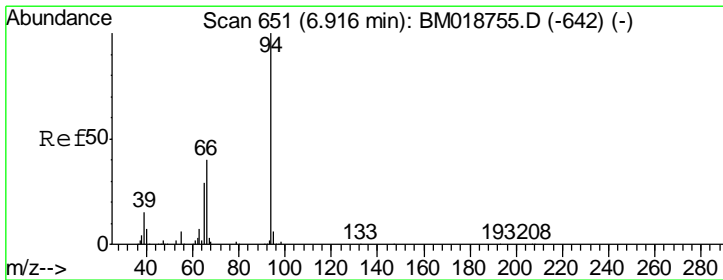
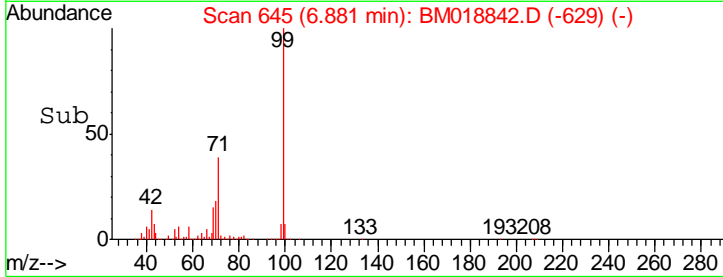
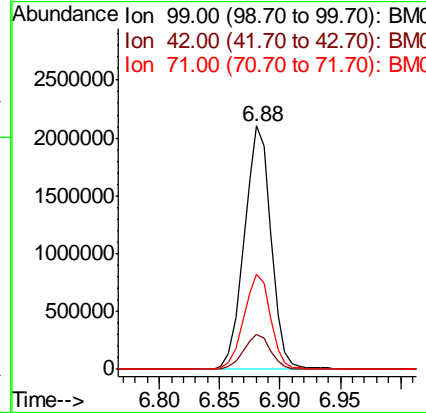
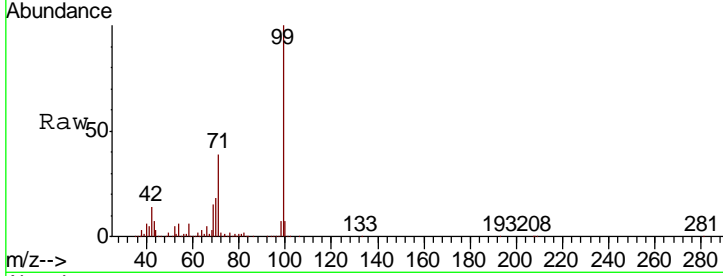




#7
 Phenol-d6
 Concen: 123.691 ng
 RT: 6.88 min Scan# 645
 Delta R.T. -0.01 min
 Lab File: BM018842.D
 Acq: 18 Feb 2019 17:23

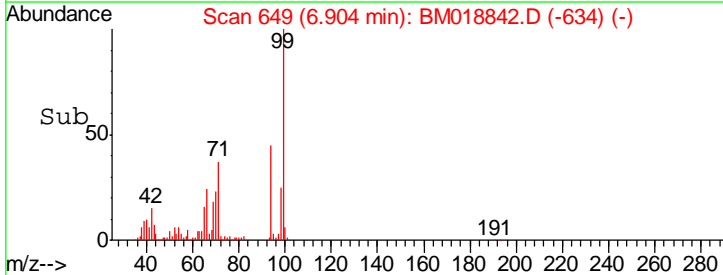
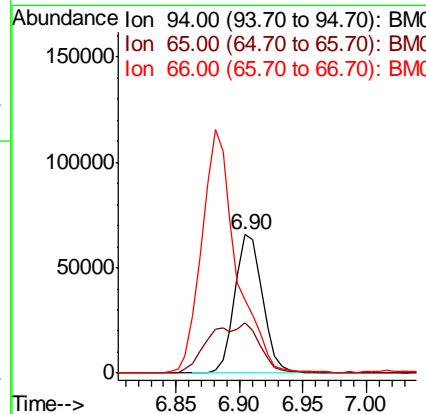
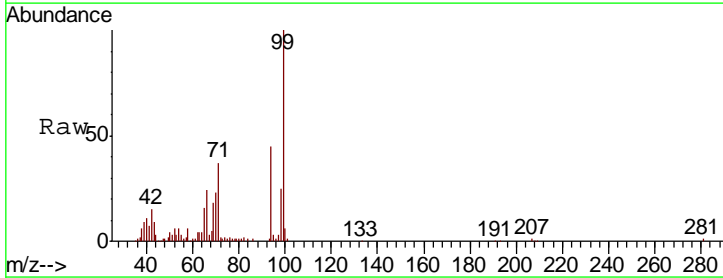
Instrument :
 BNA_M
 ClientSampled :
 TP-MH-C02

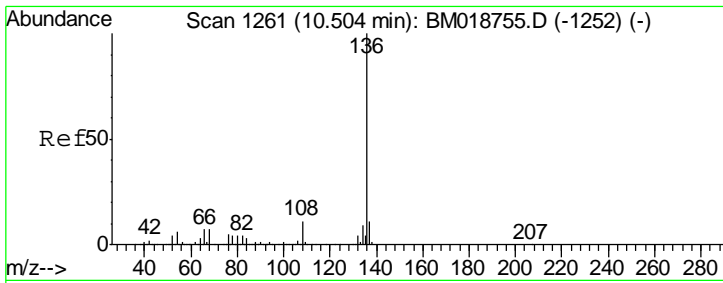
Tgt Ion	Resp	Lower	Upper
99	3262123		
42	14.2	11.0	16.6
71	39.2	31.3	46.9



#10
 Phenol
 Concen: 3.617 ng
 RT: 6.90 min Scan# 649
 Delta R.T. -0.01 min
 Lab File: BM018842.D
 Acq: 18 Feb 2019 17:23

Tgt Ion	Resp	Lower	Upper
94	100371		
65	36.1	9.6	49.6
66	53.5	20.4	60.4



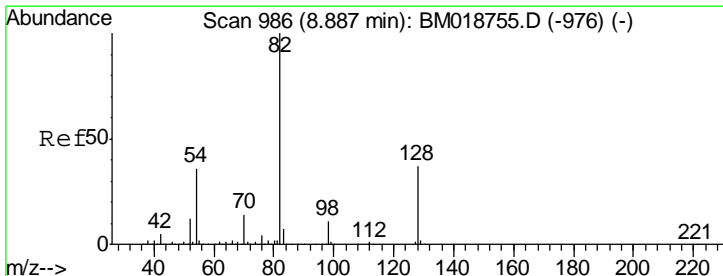
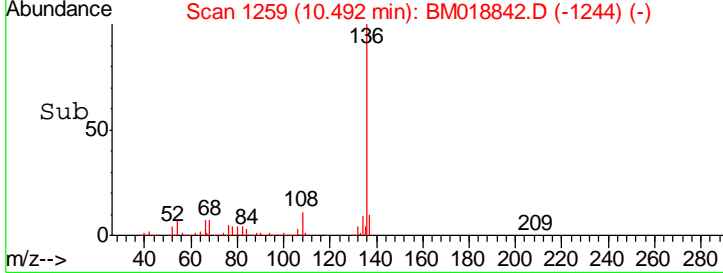
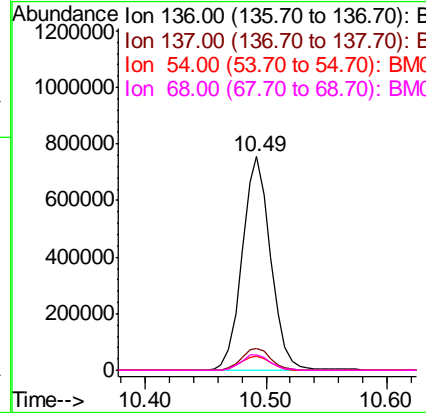
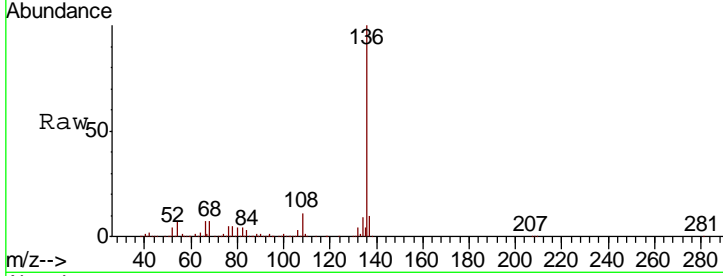


#21
 Naphthalene-d8
 Concen: 20.000 ng
 RT: 10.49 min Scan# 1259
 Delta R.T. -0.01 min
 Lab File: BM018842.D
 Acq: 18 Feb 2019 17:23

Instrument :
 BNA_M
 ClientSampleId :
 TP-MH-C02

Tgt Ion: 136 Resp: 1243280

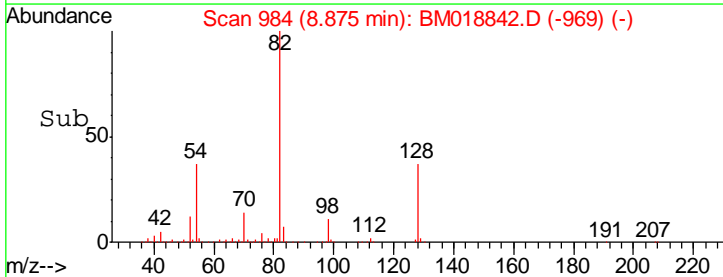
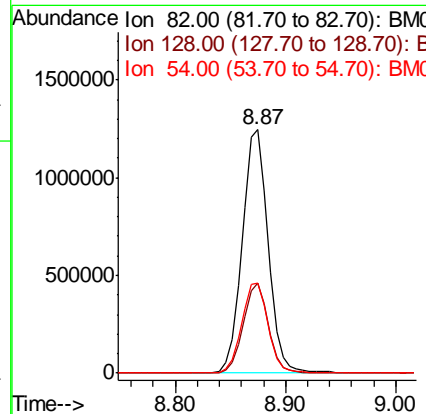
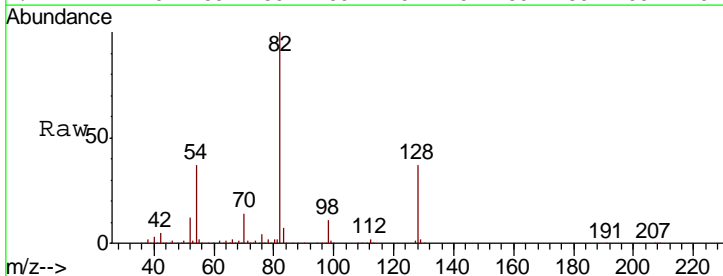
Ion	Ratio	Lower	Upper
136	100		
137	10.4	8.8	13.2
54	6.9	5.0	7.6
68	7.3	5.5	8.3

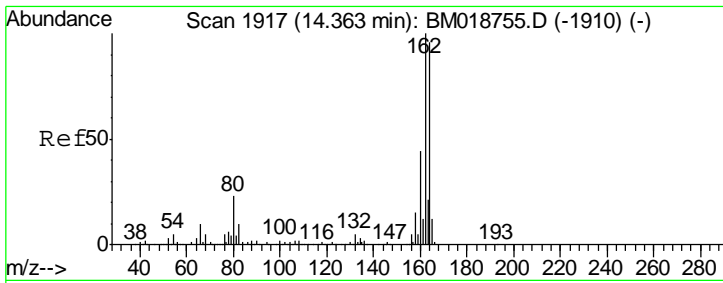


#23
 Nitrobenzene-d5
 Concen: 76.617 ng
 RT: 8.87 min Scan# 984
 Delta R.T. -0.01 min
 Lab File: BM018842.D
 Acq: 18 Feb 2019 17:23

Tgt Ion: 82 Resp: 2060102

Ion	Ratio	Lower	Upper
82	100		
128	36.8	29.9	44.9
54	37.1	29.1	43.7

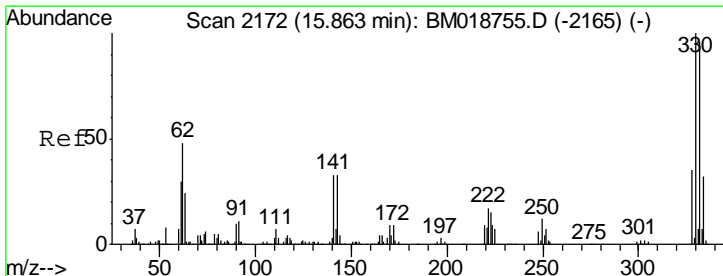
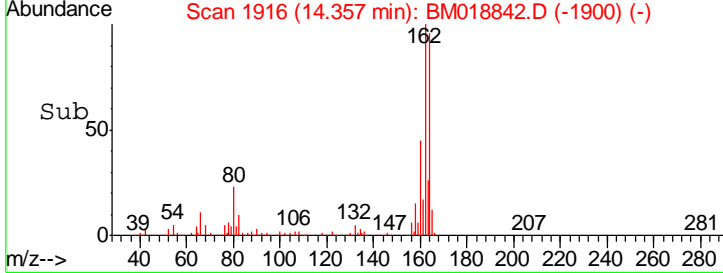
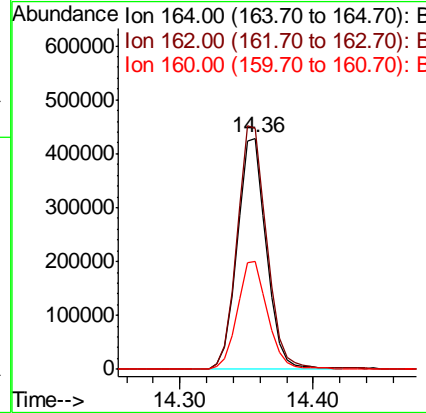
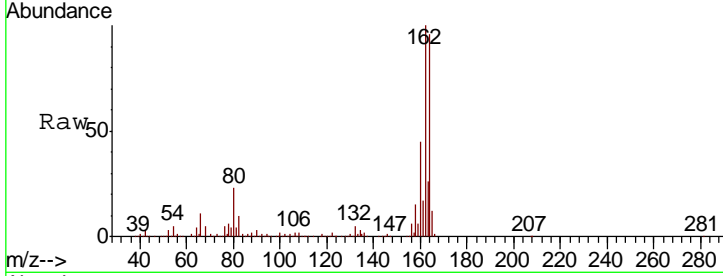




#39
 Acenaphthene-d10
 Concen: 20.000 ng
 RT: 14.36 min Scan# 1916
 Delta R.T. -0.01 min
 Lab File: BM018842.D
 Acq: 18 Feb 2019 17:23

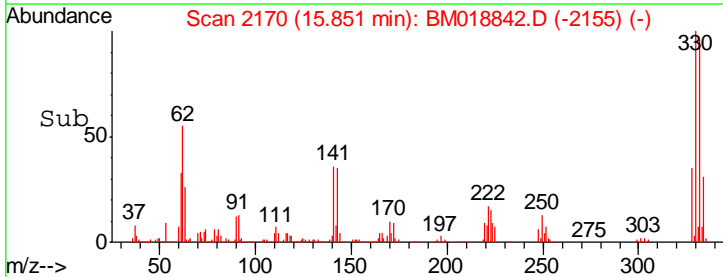
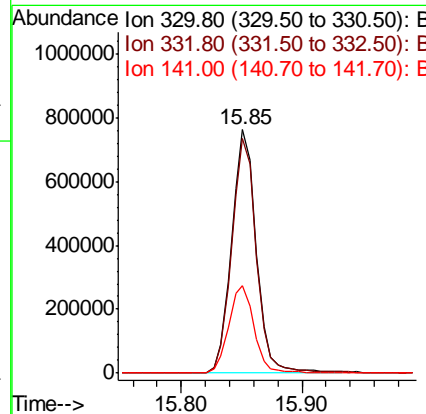
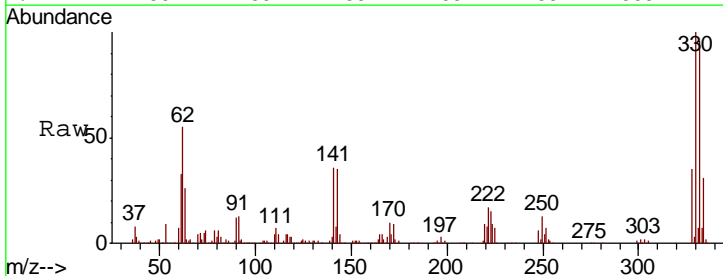
Instrument :
 BNA_M
 ClientSampleId :
 TP-MH-C02

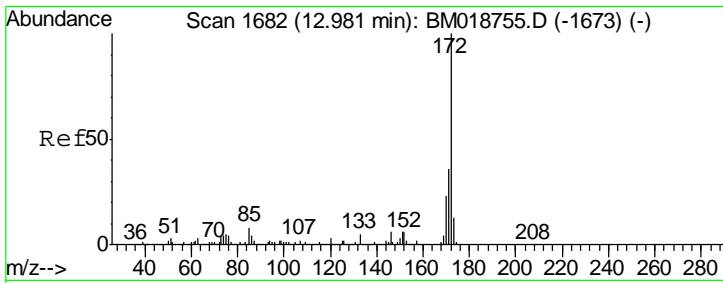
Tgt Ion	Resp	Lower	Upper
164	100		
162	104.3	83.4	125.0
160	46.8	36.6	55.0



#42
 2,4,6-Tribromophenol
 Concen: 115.249 ng
 RT: 15.85 min Scan# 2170
 Delta R.T. -0.01 min
 Lab File: BM018842.D
 Acq: 18 Feb 2019 17:23

Tgt Ion	Resp	Lower	Upper
330	100		
332	96.8	76.9	115.3
141	37.2	28.7	43.1

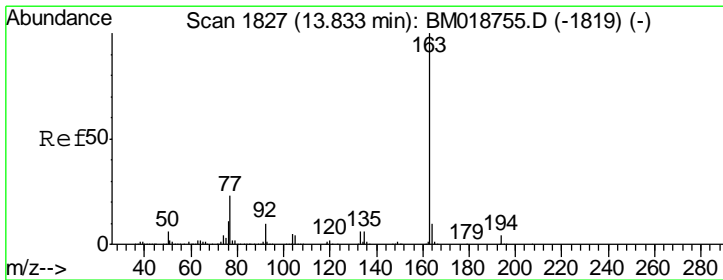
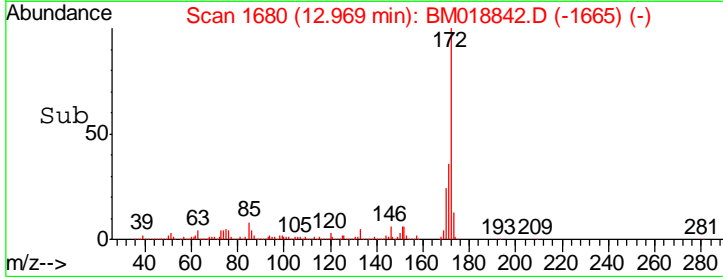
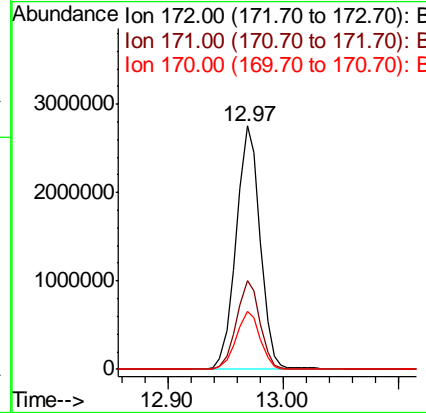
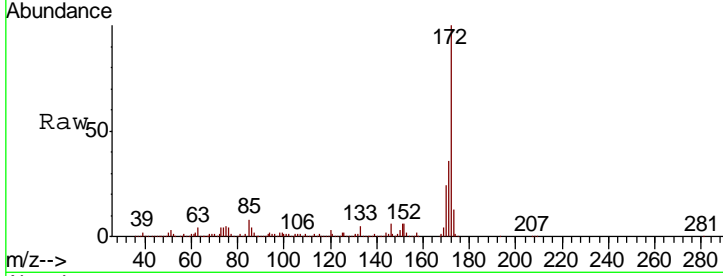




#45
 2-Fluorobiphenyl
 Concen: 81.081 ng
 RT: 12.97 min Scan# 1680
 Delta R.T. -0.01 min
 Lab File: BM018842.D
 Acq: 18 Feb 2019 17:23

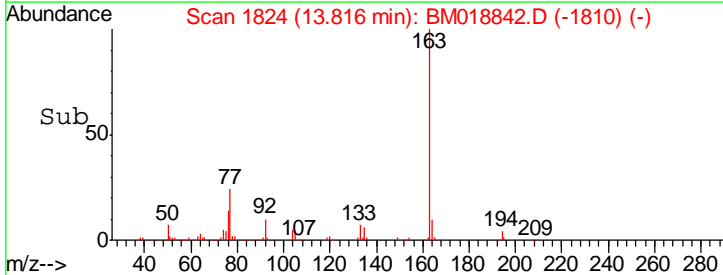
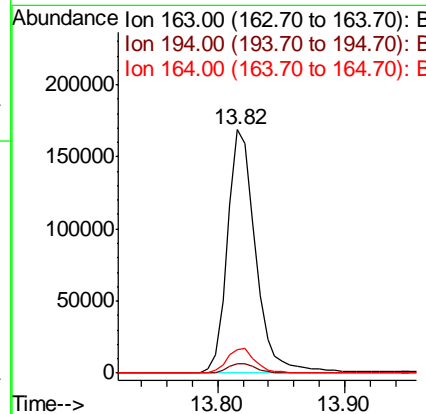
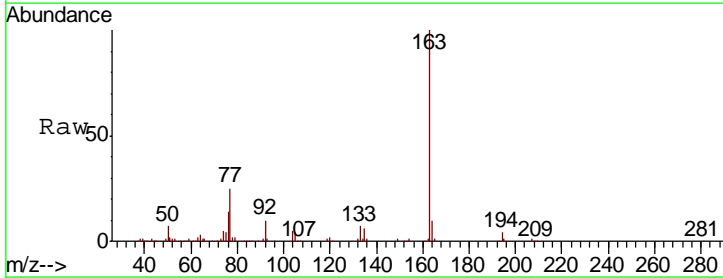
Instrument :
 BNA_M
 ClientSampled :
 TP-MH-C02

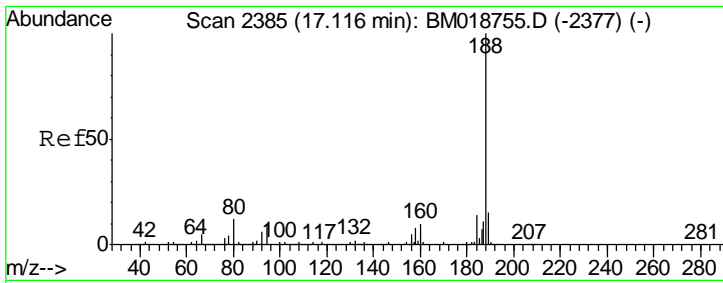
Tgt Ion	Resp	Lower	Upper
172	100		
171	36.4	29.0	43.6
170	23.7	18.6	28.0



#50
 Dimethylphthalate
 Concen: 4.793 ng
 RT: 13.82 min Scan# 1824
 Delta R.T. -0.02 min
 Lab File: BM018842.D
 Acq: 18 Feb 2019 17:23

Tgt Ion	Resp	Lower	Upper
163	100		
194	3.7	3.2	4.8
164	9.9	7.8	11.8



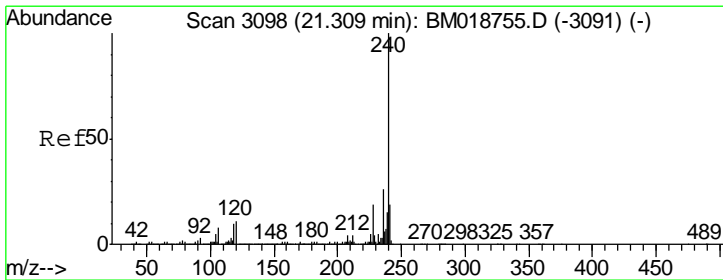
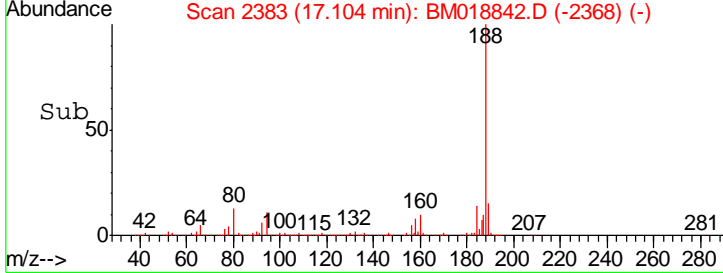
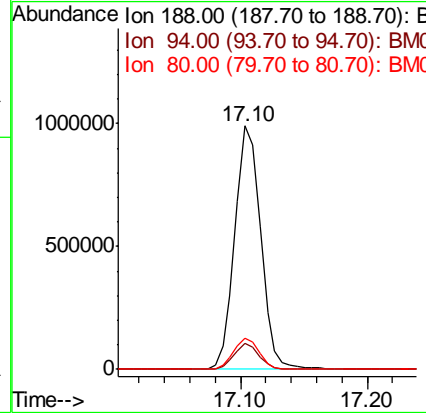
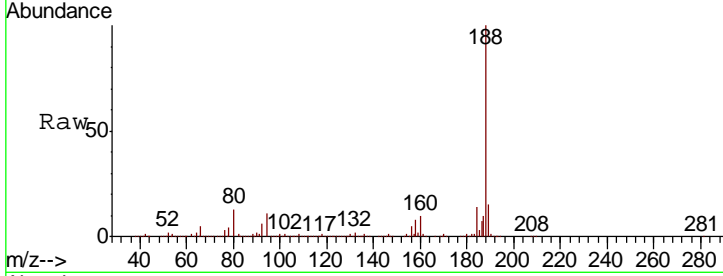


#64
 Phenanthrene-d10
 Concen: 20.000 ng
 RT: 17.10 min Scan# 2383
 Delta R.T. -0.01 min
 Lab File: BM018842.D
 Acq: 18 Feb 2019 17:23

Instrument :
 BNA_M
 Client Sampled :
 TP-MH-C02

Tgt Ion: 188 Resp: 1398728

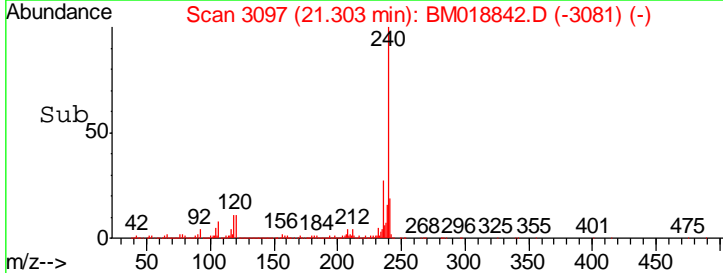
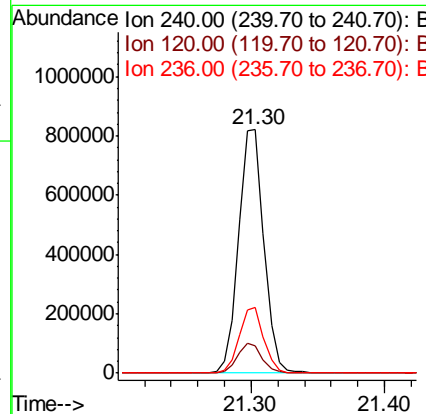
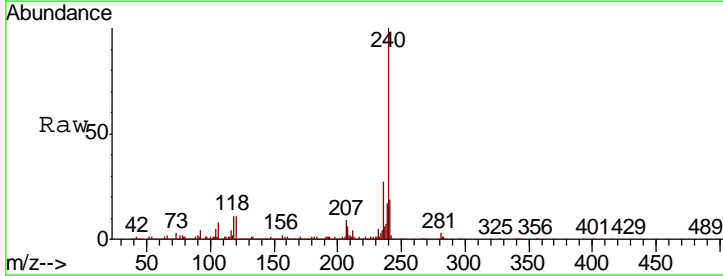
Ion	Ratio	Lower	Upper
188	100		
94	10.8	8.2	12.2
80	13.0	9.7	14.5

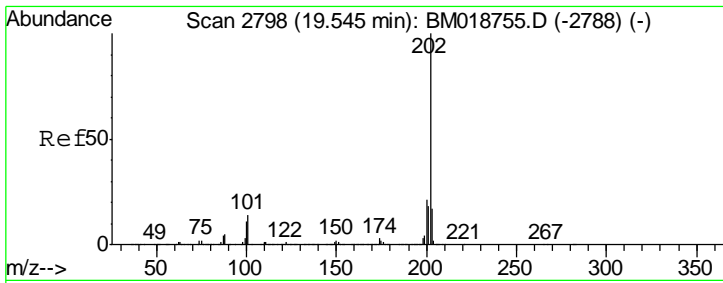


#76
 Chrysene-d12
 Concen: 20.000 ng
 RT: 21.30 min Scan# 3097
 Delta R.T. -0.01 min
 Lab File: BM018842.D
 Acq: 18 Feb 2019 17:23

Tgt Ion: 240 Resp: 1088510

Ion	Ratio	Lower	Upper
240	100		
120	11.3	8.9	13.3
236	26.8	20.9	31.3

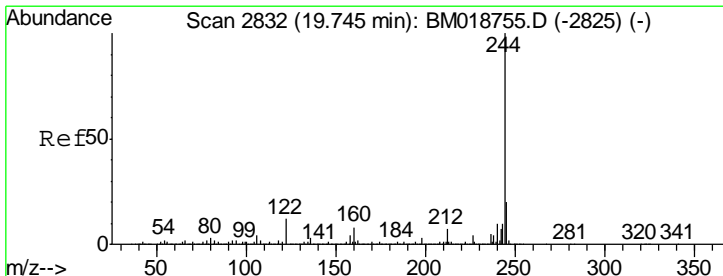
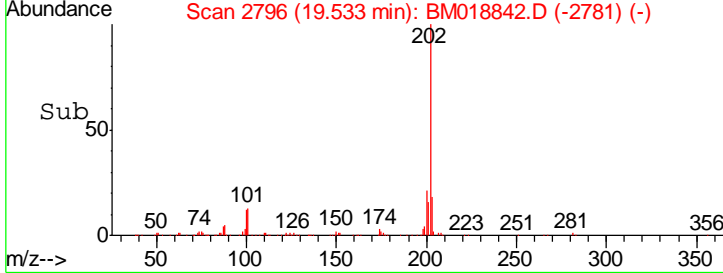
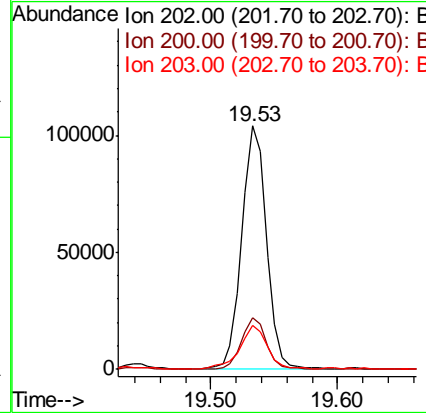
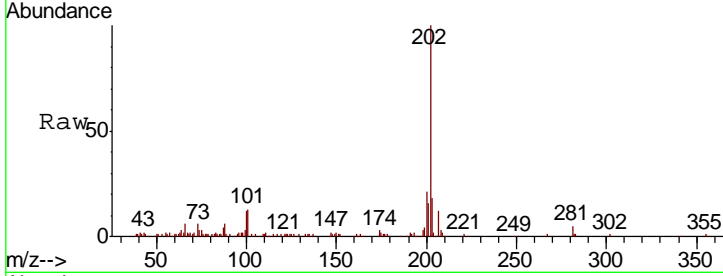




#78
 Pyrene
 Concen: 2.225 ng
 RT: 19.53 min Scan# 2796
 Delta R.T. -0.01 min
 Lab File: BM018842.D
 Acq: 18 Feb 2019 17:23

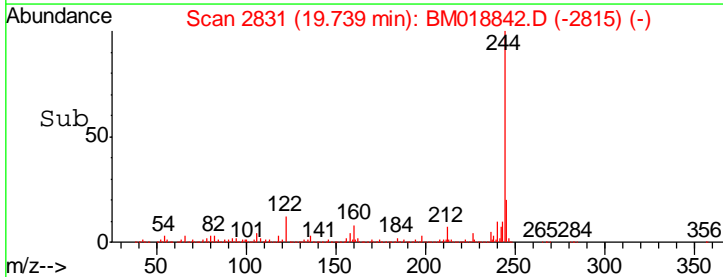
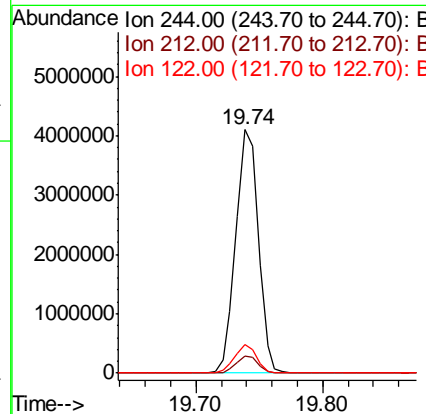
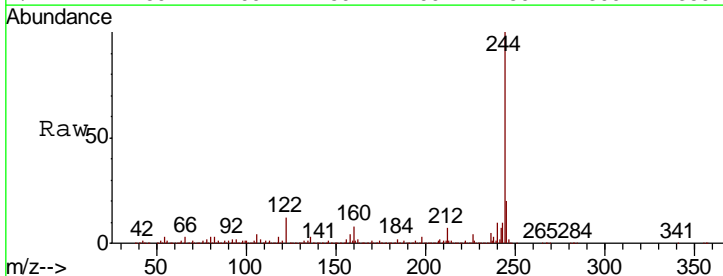
Instrument :
 BNA_M
 ClientSampled :
 TP-MH-C02

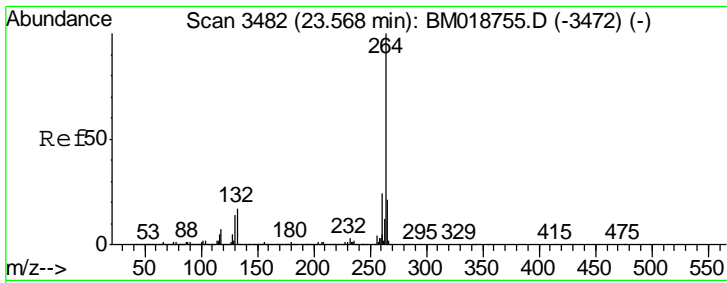
Tgt Ion	Resp	Lower	Upper
202	140635		
200	21.2	16.9	25.3
203	18.2	13.8	20.8



#79
 Terphenyl-d14
 Concen: 95.582 ng
 RT: 19.74 min Scan# 2831
 Delta R.T. -0.01 min
 Lab File: BM018842.D
 Acq: 18 Feb 2019 17:23

Tgt Ion	Resp	Lower	Upper
244	5043481		
212	7.1	5.6	8.4
122	11.7	9.3	13.9



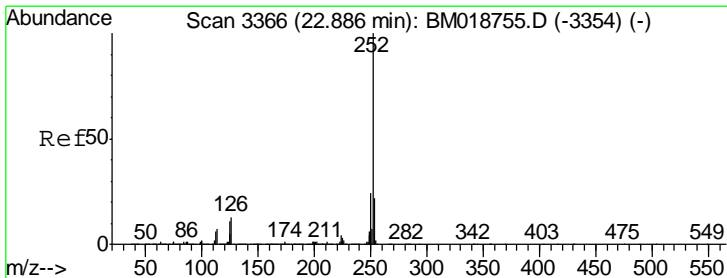
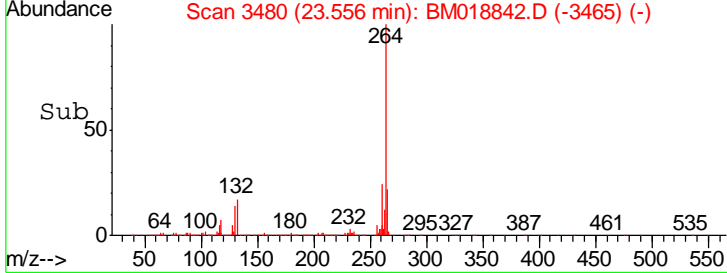
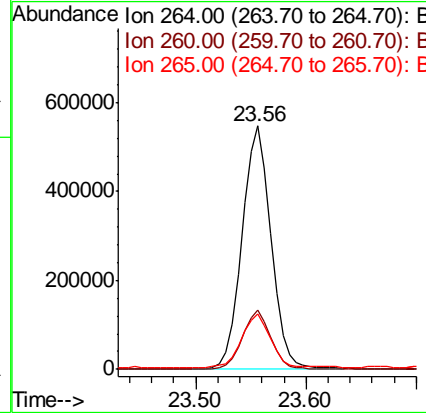
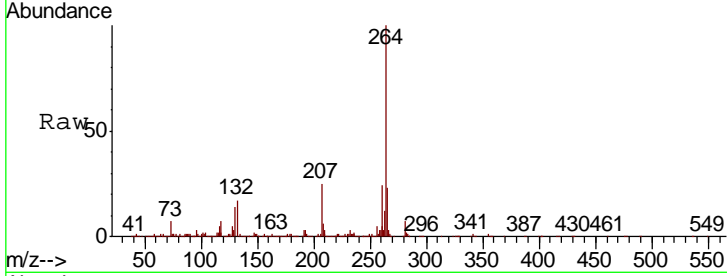


#87
 Perylene-d12
 Concen: 20.000 ng
 RT: 23.56 min Scan# 3480
 Delta R.T. -0.01 min
 Lab File: BM018842.D
 Acq: 18 Feb 2019 17:23

Instrument :
 BNA_M
 ClientSampled :
 TP-MH-C02

Tgt Ion: 264 Resp: 1013724

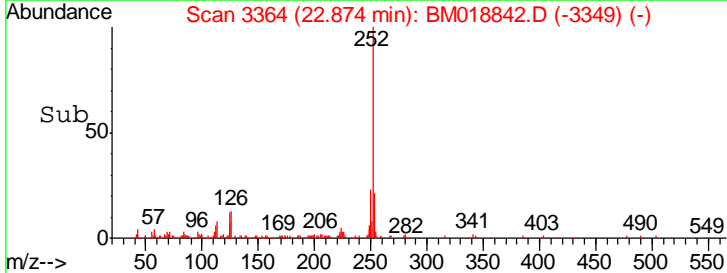
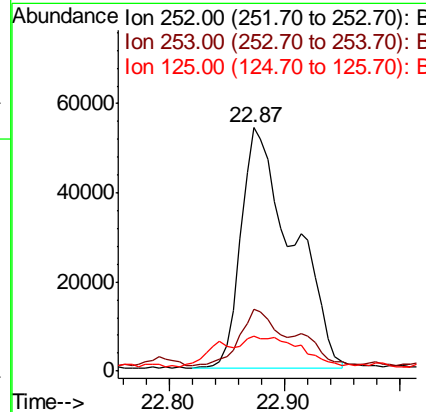
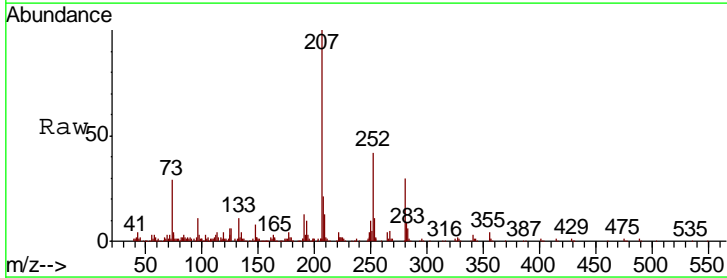
Ion	Ratio	Lower	Upper
264	100		
260	24.2	18.9	28.3
265	22.6	17.3	25.9

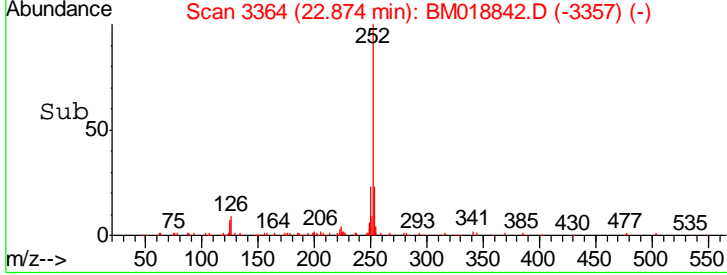
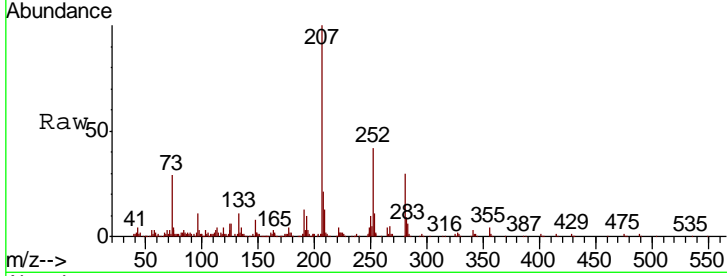
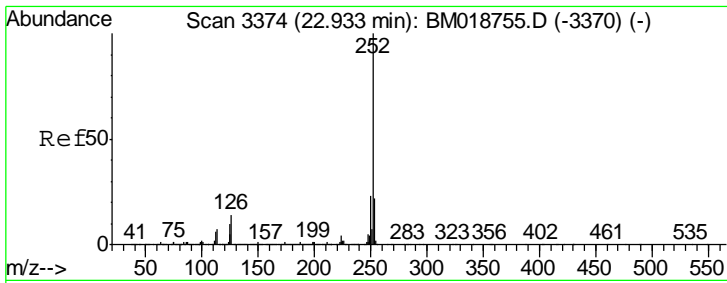


#88
 Benzo(b)fluoranthene
 Concen: 2.874 ng
 RT: 22.87 min Scan# 3364
 Delta R.T. -0.01 min
 Lab File: BM018842.D
 Acq: 18 Feb 2019 17:23

Tgt Ion: 252 Resp: 166668

Ion	Ratio	Lower	Upper
252	100		
253	25.3	17.8	26.6
125	14.6	8.6	12.8#





#89
 Benzo(k)fluoranthene
 Concen: 2.873 ng
 RT: 22.87 min Scan# 3364
 Delta R.T. -0.06 min
 Lab File: BM018842.D
 Acq: 18 Feb 2019 17:23

Instrument :
 BNA_M
 ClientSampleId :
 TP-MH-C02

Tgt Ion	Resp	Lower	Upper
252	100		
253	25.3	17.7	26.5
125	14.6	8.2	12.4#

