

Data Path : Z:\HPCHEM1\BNA M\DATA\BM021916\
 Data File : BM004285.D
 Acq On : 19 Feb 2016 14:19
 Operator : SJ/UM
 Sample : H1497-02
 Misc :
 ALS Vial : 5 Sample Multiplier: 1

Instrument :
 BNA_M
 ClientSampleId :
 0311-S11-0312

Quant Time: Feb 19 23:34:05 2016
 Quant Method : Z:\HPCHEM1\BNA M\METHODS\SOM02.2-EPA-BM021216.M
 Quant Title : SVOA CALIBRATION
 QLast Update : Fri Feb 19 23:29:57 2016
 Response via : Initial Calibration

Internal Standards	R.T.	QIon	Response	Conc	Units	Dev(Min)
1) 1,4-Dichlorobenzene-d4	7.63	152	20071	20.00	ng/ul	0.00
18) Naphthalene-d8	10.42	136	102660	20.00	ng/ul	0.00
36) Acenaphthene-d10	14.29	164	69881	20.00	ng/ul	0.00
62) Phenanthrene-d10	17.05	188	170891	20.00	ng/ul	0.00
78) Chrysene-d12	21.26	240	207566	20.00	ng/ul	0.00
86) Perylene-d12	23.48	264	197729	20.00	ng/ul	0.00

System Monitoring Compounds

3) 1,4-Dioxane-d8	3.09	96	807	2.03	ng/uL	0.00
5) Phenol-d5	6.83	99	22008	13.65	ng/ul	0.00
7) Bis-(2-Chloroethyl)ether-d	6.97	67	12045	13.83	ng/ul	0.00
9) 2-Chlorophenol-d4	7.17	132	19525	13.66	ng/ul	0.00
13) 4-Methylphenol-d8	8.36	113	16600	12.09	ng/ul	0.00
19) Nitrobenzene-d5	8.79	128	9613	12.18	ng/ul	0.00
22) 2-Nitrophenol-d4	9.51	143	11056	12.53	ng/ul	0.00
26) 2,4-Dichlorophenol-d3	10.06	165	20363	12.80	ng/ul	0.00
29) 4-Chloroaniline-d4	10.57	131	25943	13.70	ng/ul	0.00
44) Dimethylphthalate-d6	13.70	166	84041	14.45	ng/ul	0.00
47) Acenaphthylene-d8	13.99	160	95551	13.52	ng/ul	0.00
52) 4-Nitrophenol-d4	14.55	143	10117	10.75	ng/ul	0.00
58) Fluorene-d10	15.29	176	73245	14.94	ng/ul	0.00
63) 4,6-Dinitro-2-methylphenol	15.44	200	8595	8.26	ng/ul	0.00
71) Anthracene-d10	17.15	188	119656	14.32	ng/ul	0.00
79) Pyrene-d10	19.45	212	144747	13.14	ng/ul	0.00
90) Benzo(a)pyrene-d12	23.34	264	147044	13.94	ng/ul	0.00

Target Compounds

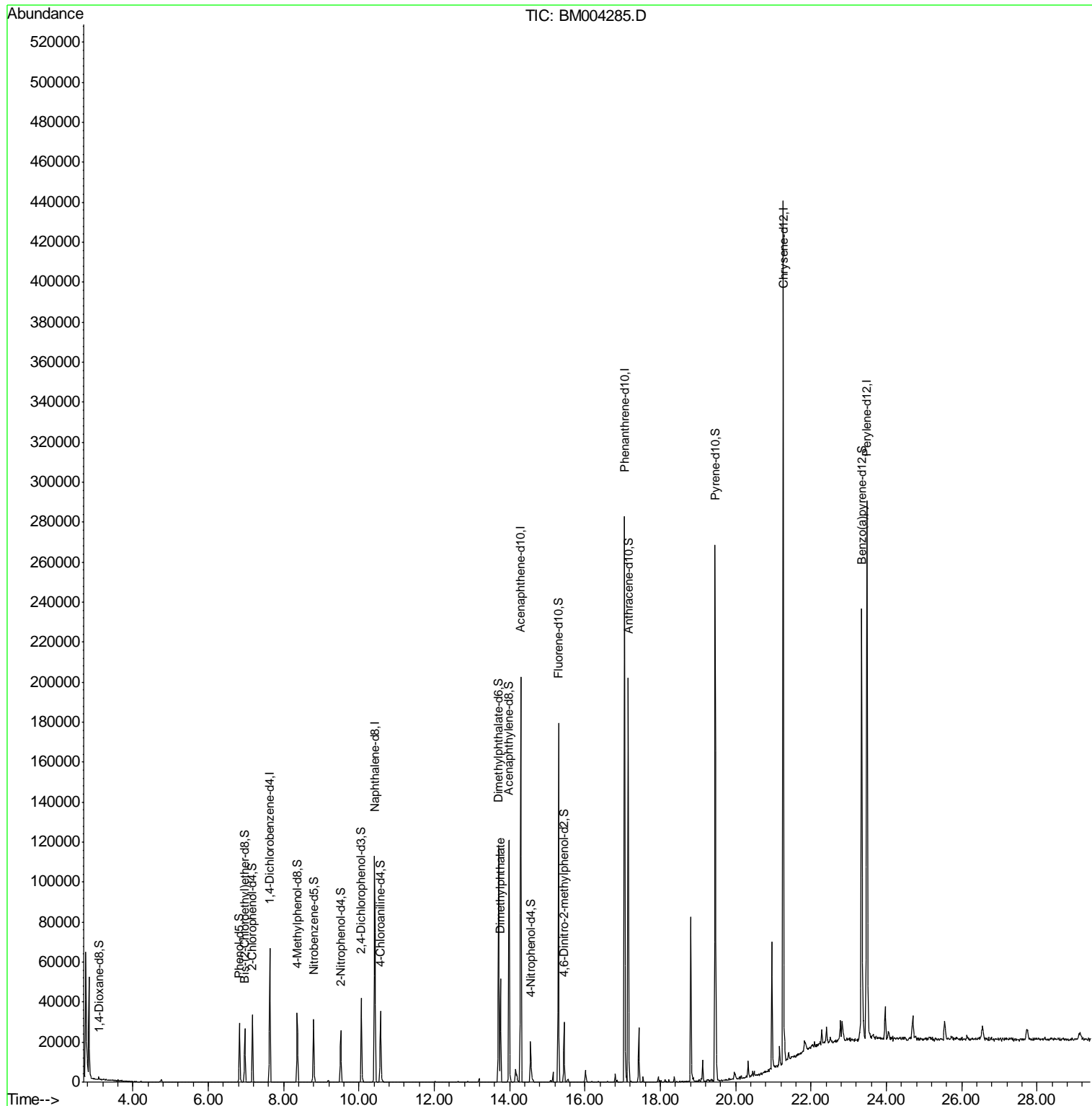
Target Compounds	R.T.	QIon	Response	Conc	Units	Ovalue
45) Dimethylphthalate	13.75	163	37478	6.17	ng/ul	99

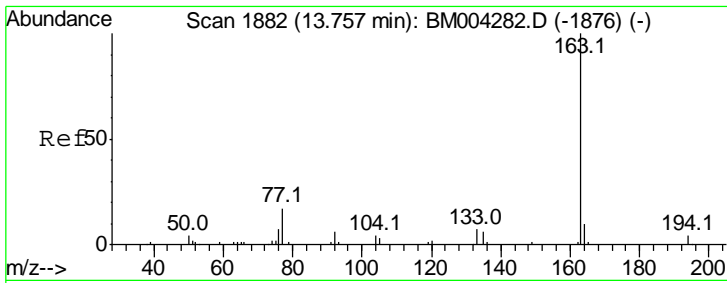
(#) = qualifier out of range (m) = manual integration (+) = signals summed

Data Path : Z:\HPCHEM1\BNA M\DATA\BM021916\
 Data File : BM004285.D
 Acq On : 19 Feb 2016 14:19
 Operator : SJ/UM
 Sample : H1497-02
 Misc :
 ALS Vial : 5 Sample Multiplier: 1

Instrument :
 BNA_M
 ClientSampleId :
 0311-S11-0312

Quant Time: Feb 19 23:34:05 2016
 Quant Method : Z:\HPCHEM1\BNA M\METHODS\SOM02.2-EPA-BM021216.M
 Quant Title : SVOA CALIBRATION
 QLast Update : Fri Feb 19 23:29:57 2016
 Response via : Initial Calibration





#45
 Dimethylphthalate
 Concen: 6.17 ng/ul
 RT: 13.75 min Scan# 1881
 Delta R.T. -0.01 min
 Lab File: BM004285.D
 Acq: 19 Feb 2016 14:19

Instrument :
 BNA_M
 ClientSampled :
 0311-S11-0312

Tot Ion: 163 Resp: 37478

Ion	Ratio	Lower	Upper
163	100		
194	3.7	3.2	4.8
164	10.4	7.8	11.8

