

Data Path : Z:\HPCHEM1\BNA M\DATA\BM021916\
 Data File : BM004293.D
 Acq On : 19 Feb 2016 20:03
 Operator : SJ/UM
 Sample : H1497-10
 Misc :
 ALS Vial : 12 Sample Multiplier: 1

Instrument :
 BNA_M
 ClientSampleId :
 0311-S13-0003

Quant Time: Feb 19 23:56:17 2016
 Quant Method : Z:\HPCHEM1\BNA M\METHODS\SOM02.2-EPA-BM021216.M
 Quant Title : SVOA CALIBRATION
 QLast Update : Fri Feb 19 23:51:45 2016
 Response via : Initial Calibration

Internal Standards	R.T.	QIon	Response	Conc	Units	Dev(Min)
1) 1,4-Dichlorobenzene-d4	7.63	152	25983	20.00	ng/ul	0.00
18) Naphthalene-d8	10.42	136	132040	20.00	ng/ul	0.00
36) Acenaphthene-d10	14.29	164	89698	20.00	ng/ul	0.00
62) Phenanthrene-d10	17.04	188	220088	20.00	ng/ul	0.00
78) Chrysene-d12	21.26	240	261354	20.00	ng/ul	0.00
86) Perylene-d12	23.49	264	241108	20.00	ng/ul	0.00

System Monitoring Compounds

3) 1,4-Dioxane-d8	3.09	96	2500	4.85	ng/uL	0.00
5) Phenol-d5	6.82	99	58314	27.94	ng/ul	0.00
7) Bis-(2-Chloroethyl)ether-d	6.97	67	33172	29.43	ng/ul	0.00
9) 2-Chlorophenol-d4	7.17	132	52627	28.43	ng/ul	0.00
13) 4-Methylphenol-d8	8.36	113	56188	31.61	ng/ul	0.00
19) Nitrobenzene-d5	8.79	128	28461	28.03	ng/ul	0.00
22) 2-Nitrophenol-d4	9.51	143	33728	29.72	ng/ul	0.00
26) 2,4-Dichlorophenol-d3	10.06	165	55316	27.03	ng/ul	0.00
29) 4-Chloroaniline-d4	10.56	131	86833	35.64	ng/ul	0.00
44) Dimethylphthalate-d6	13.70	166	234792	31.46	ng/ul	0.00
47) Acenaphthylene-d8	13.98	160	266969	29.44	ng/ul	0.00
52) 4-Nitrophenol-d4	14.54	143	34860	28.87	ng/ul	0.00
58) Fluorene-d10	15.29	176	199114	31.65	ng/ul	0.00
63) 4,6-Dinitro-2-methylphenol	15.43	200	32799	24.47	ng/ul	0.00
71) Anthracene-d10	17.14	188	329986	30.67	ng/ul	0.00
79) Pyrene-d10	19.46	212	399248	28.78	ng/ul	0.00
90) Benzo(a)pyrene-d12	23.34	264	410952	31.94	ng/ul	0.00

Target Compounds

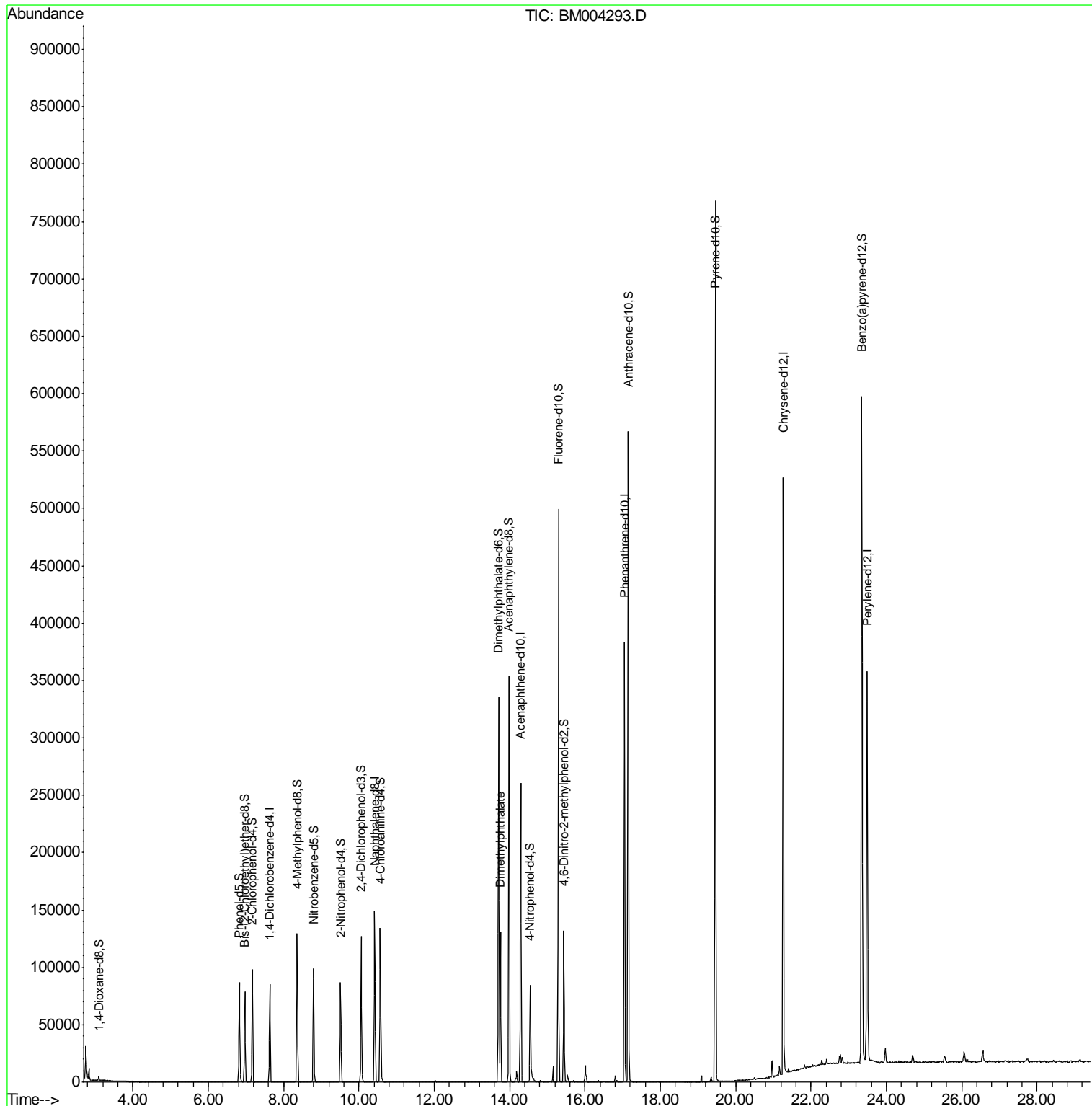
Target Compounds	R.T.	QIon	Response	Conc	Units	Ovalue
45) Dimethylphthalate	13.75	163	86473	11.09	ng/ul	99

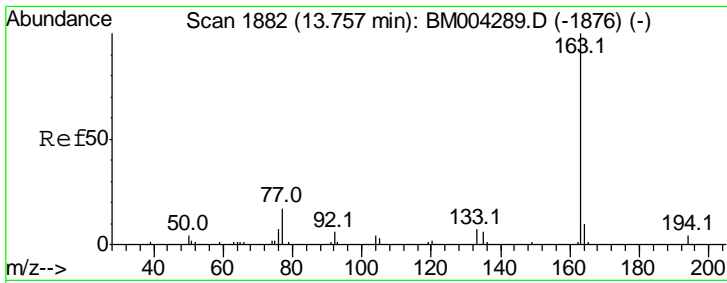
(#) = qualifier out of range (m) = manual integration (+) = signals summed

Data Path : Z:\HPCHEM1\BNA M\DATA\BM021916\
 Data File : BM004293.D
 Acq On : 19 Feb 2016 20:03
 Operator : SJ/UM
 Sample : H1497-10
 Misc :
 ALS Vial : 12 Sample Multiplier: 1

Instrument :
 BNA_M
 ClientSampleId :
 0311-S13-0003

Quant Time: Feb 19 23:56:17 2016
 Quant Method : Z:\HPCHEM1\BNA M\METHODS\SOM02.2-EPA-BM021216.M
 Quant Title : SVOA CALIBRATION
 QLast Update : Fri Feb 19 23:51:45 2016
 Response via : Initial Calibration





#45
 Dimethylphthalate
 Concen: 11.09 ng/ul
 RT: 13.75 min Scan# 1881
 Delta R.T. -0.01 min
 Lab File: BM004293.D
 Acq: 19 Feb 2016 20:03

Instrument :
 BNA_M
 ClientSampleId :
 0311-S13-0003

Tot Ion:163 Resp: 86473

Ion	Ratio	Lower	Upper
163	100		
194	4.0	3.2	4.8
164	10.5	7.8	11.8

