

Data Path : Z:\HPCHEM1\BNA_M\DATA\BM022015\
 Data File : BM000559.D
 Acq On : 20 Feb 2015 14:22
 Operator : TP/IZ
 Sample : MDL-BLK-W
 Misc : MDL-WATER-BLK
 ALS Vial : 7 Sample Multiplier: 1

Instrument :
 BNA_M
 ClientSampleId :
 MDL-BLK-W

Quant Time: Feb 21 02:48:18 2015
 Quant Method : Z:\HPCHEM1\BNA_M\METHODS\SOM01.2-EPA-MA-BM022015.M
 Quant Title : SVOA CALIBRATION
 QLast Update : Sat Feb 21 00:39:15 2015
 Response via : Initial Calibration

Internal Standards	R.T.	QIon	Response	Conc	Units	Dev(Min)
1) 1,4-Dichlorobenzene-d4	7.67	152	107145	20.00	ng/ul	0.00
16) Naphthalene-d8	10.46	136	473675	20.00	ng/ul	0.00
33) Acenaphthene-d10	14.33	164	326948	20.00	ng/ul	0.00
59) Phenanthrene-d10	17.07	188	760267	20.00	ng/ul	0.00
75) Chrysene-d12	21.26	240	672689	20.00	ng/ul	0.00
83) Perylene-d12	23.47	264	468354	20.00	ng/ul	0.00

System Monitoring Compounds

3) Phenol-d5	6.85	99	259261	33.24	ng/ul	0.00
5) Bis-(2-Chloroethyl)ether-d	7.01	67	168399	36.53	ng/ul	0.00
7) 2-Chlorophenol-d4	7.20	132	229212	34.54	ng/ul	0.00
11) 4-Methylphenol-d8	8.39	113	229123	34.65	ng/ul	0.00
17) Nitrobenzene-d5	8.83	128	116411	36.62	ng/ul	0.00
20) 2-Nitrophenol-d4	9.55	143	137414	37.34	ng/ul	0.00
24) 2,4-Dichlorophenol-d3	10.09	165	250885	32.18	ng/ul	0.00
27) 4-Chloroaniline-d4	10.60	131	355573	51.13	ng/ul	0.00
41) Dimethylphthalate-d6	13.74	166	921229	38.93	ng/ul	0.00
44) Acenaphthylene-d8	14.02	160	1114996	35.17	ng/ul	0.00
49) 4-Nitrophenol-d4	14.54	143	136485	36.07	ng/ul	0.00
55) Fluorene-d10	15.32	176	838066	36.24	ng/ul	0.00
60) 4,6-Dinitro-2-methylphenol	15.44	200	129574	29.33	ng/ul	0.00
68) Anthracene-d10	17.17	188	1303782	36.26	ng/ul	0.00
76) Pyrene-d10	19.47	212	1376409	35.15	ng/ul	0.00
87) Benzo(a)pyrene-d12	23.33	264	808811	36.84	ng/ul	0.00

Target Compounds

						Qvalue
2) Benzaldehyde	6.85	77	306	0.07	ng/ul#	2
6) Bis(2-Chloroethyl)ether	7.10	93	633	0.10	ng/ul#	52
13) N-Nitroso-di-n-propylamine	8.39	70	6402	1.26	ng/ul#	1
18) Nitrobenzene	8.83	77	960	0.12	ng/ul#	33
19) Isophorone	9.55	82	14245	1.01	ng/ul#	70
26) Naphthalene	10.60	128	275	0.01	ng/ul#	1
42) Dimethylphthalate	13.76	163	135	0.01	ng/ul#	1
43) 2,6-Dinitrotoluene	13.74	165	6736	1.46	ng/ul#	40
50) 4-Nitrophenol	14.55	109	645	0.16	ng/ul#	1
56) Fluorene	15.32	166	2051	0.08	ng/ul#	7
58) 4-Nitroaniline	15.33	138	448	0.10	ng/ul#	1
61) 4,6-Dinitro-2-methylphenol	15.45	198	367	0.08	ng/ul#	1
62) N-Nitrosodiphenylamine	15.45	169	1036	0.05	ng/ul#	16
67) Phenanthrene	17.07	178	293	0.01	ng/ul#	1
69) Anthracene	17.07	178	293	0.01	ng/ul#	1
77) Pyrene	19.47	202	1455	0.03	ng/ul#	1
78) Butylbenzylphthalate	20.41	149	163	0.01	ng/ul#	25
80) Benzo(a)anthracene	21.26	228	2081	0.05	ng/ul#	65
81) Bis(2-ethylhexyl)phthalate	21.19	149	301	0.01	ng/ul#	50
82) Chrysene	21.26	228	2081	0.06	ng/ul#	62
84) Di-n-octyl phthalate	22.04	149	193	0.01	ng/ul	100
85) Benzo(b)fluoranthene	22.80	252	883	0.03	ng/ul#	17
86) Benzo(k)fluoranthene	22.85	252	451	0.02	ng/ul#	1
88) Benzo(a)pyrene	23.38	252	298	0.01	ng/ul#	1

Data Path : Z:\HPCHEM1\BNA_M\DATA\BM022015\
 Data File : BM000559.D
 Acq On : 20 Feb 2015 14:22
 Operator : TP/IZ
 Sample : MDL-BLK-W
 Misc : MDL-WATER-BLK
 ALS Vial : 7 Sample Multiplier: 1

Instrument :
 BNA_M
ClientSampleId :
 MDL-BLK-W

Quant Time: Feb 21 02:48:18 2015
 Quant Method : Z:\HPCHEM1\BNA_M\METHODS\SOM01.2-EPA-MA-BM022015.M
 Quant Title : SVOA CALIBRATION
 QLast Update : Sat Feb 21 00:39:15 2015
 Response via : Initial Calibration

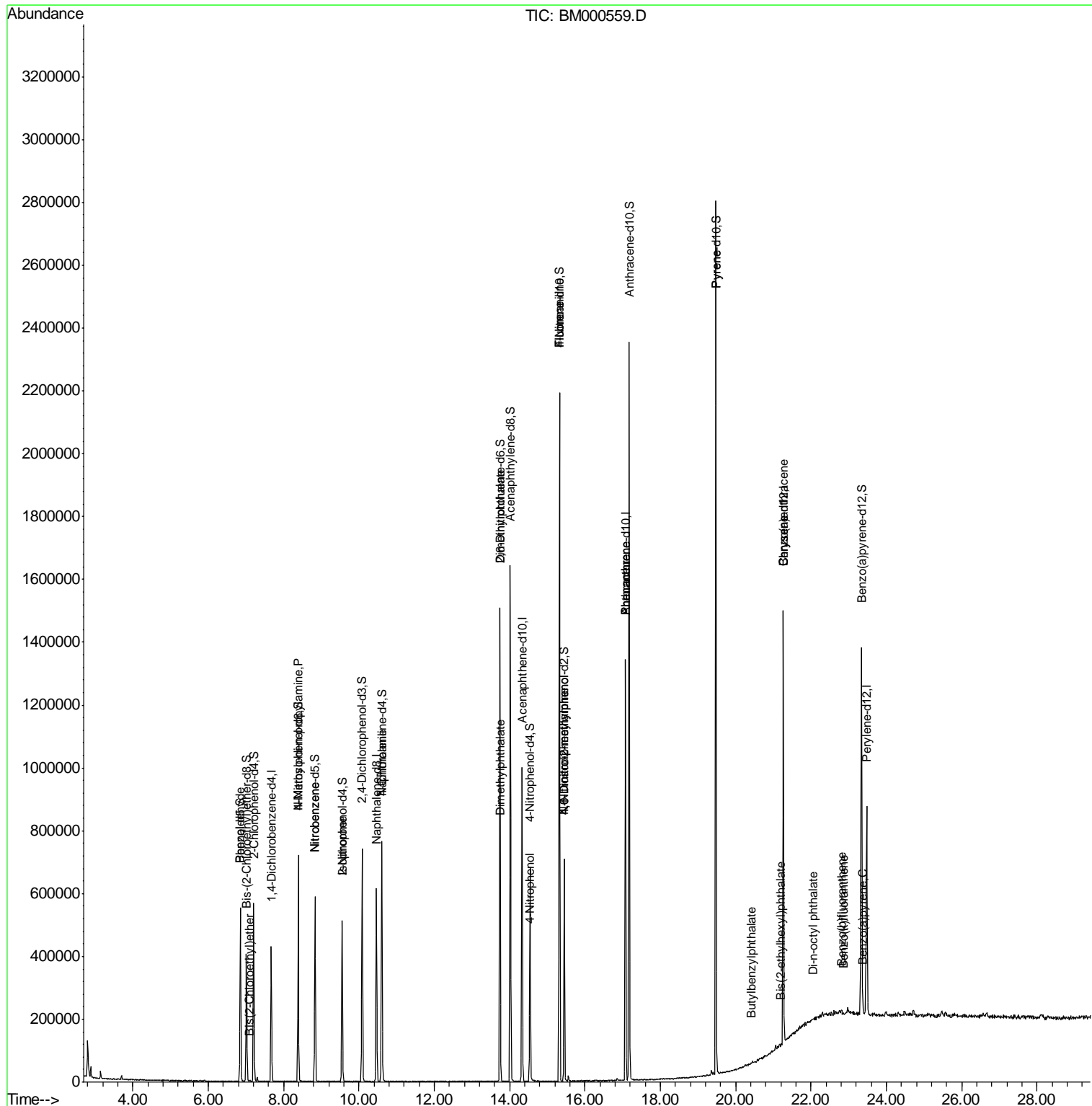
Internal Standards	R.T.	QIon	Response	Conc	Units	Dev(Min)

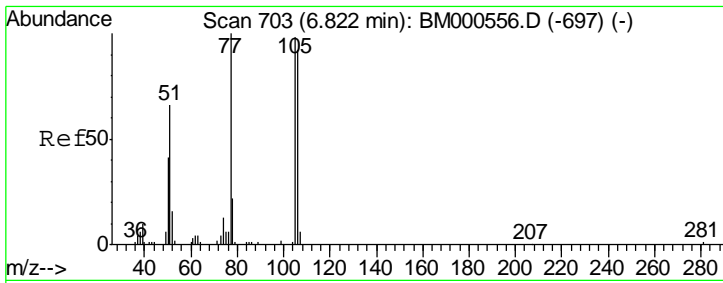
(#) = qualifier out of range (m) = manual integration (+) = signals summed

Data Path : Z:\HPCHEM1\BNA_M\DATA\BM022015\
 Data File : BM000559.D
 Acq On : 20 Feb 2015 14:22
 Operator : TP/IZ
 Sample : MDL-BLK-W
 Misc : MDL-WATER-BLK
 ALS Vial : 7 Sample Multiplier: 1

Instrument :
 BNA_M
Client Sampled :
 MDL-BLK-W

Quant Time: Feb 21 02:48:18 2015
 Quant Method : Z:\HPCHEM1\BNA_M\METHODS\SOM1.2-EPA-MA-BM022015.M
 Quant Title : SVOA CALIBRATION
 QLast Update : Sat Feb 21 00:39:15 2015
 Response via : Initial Calibration

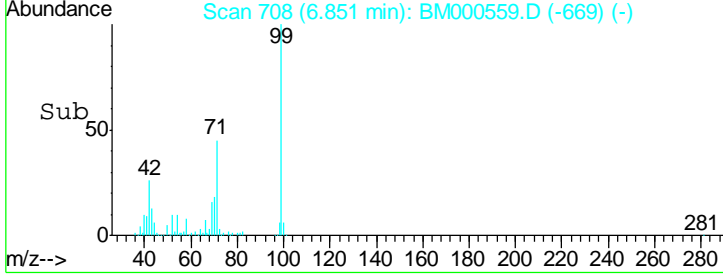
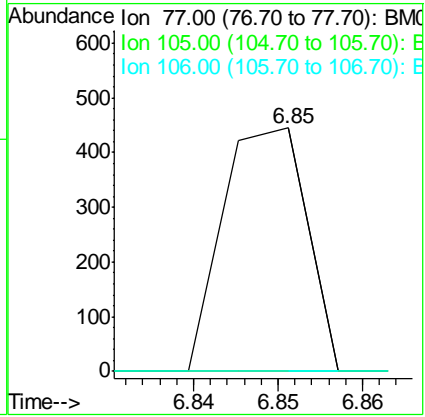
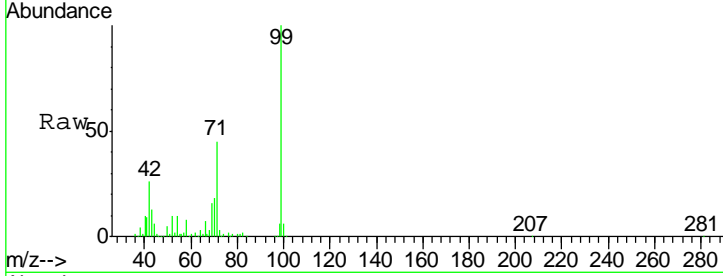




#2
Benzaldehyde
Concen: 0.07 ng/ul
RT: 6.85 min Scan# 708
Delta R.T. 0.03 min
Lab File: BM000559.D
Acq: 20 Feb 2015 14:22

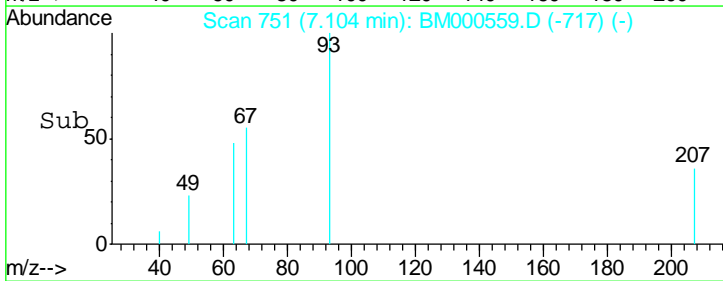
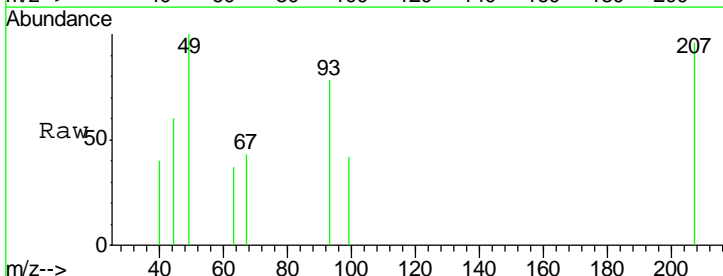
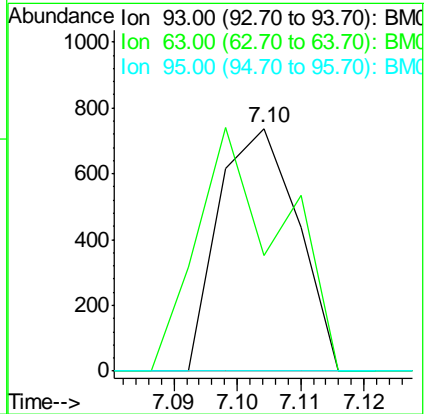
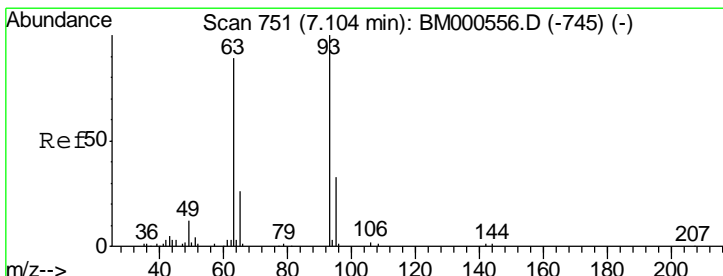
Instrument :
BNA_M
ClientSampled :
MDL-BLK-W

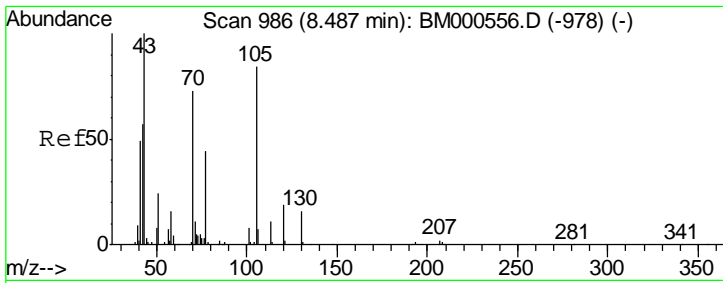
Tgt Ion	Resp	Lower	Upper
77	100		
105	0.0	78.6	117.8#
106	0.0	74.2	111.4#



#6
Bis(2-Chloroethyl)ether
Concen: 0.10 ng/ul
RT: 7.10 min Scan# 751
Delta R.T. -0.00 min
Lab File: BM000559.D
Acq: 20 Feb 2015 14:22

Tgt Ion	Resp	Lower	Upper
93	100		
63	47.7	71.2	106.8#
95	0.0	26.1	39.1#

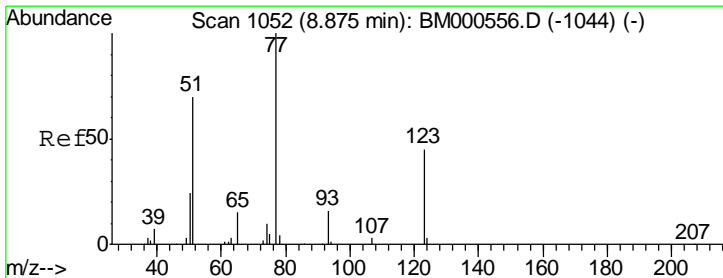
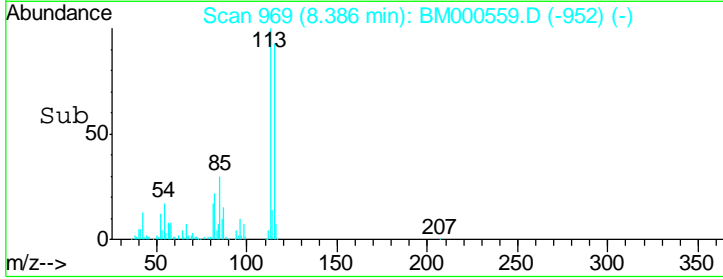
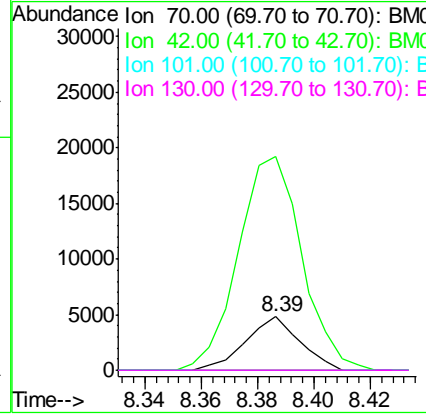
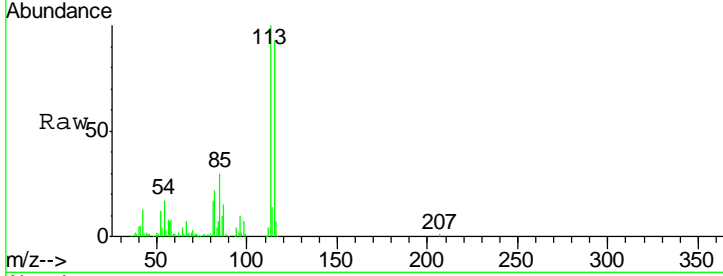




#13
 N-Nitroso-di-n-propylamine
 Concen: 1.26 ng/ul
 RT: 8.39 min Scan# 969
 Delta R.T. -0.10 min
 Lab File: BM000559.D
 Acq: 20 Feb 2015 14:22

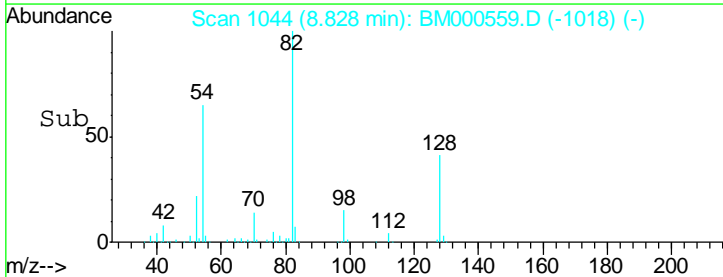
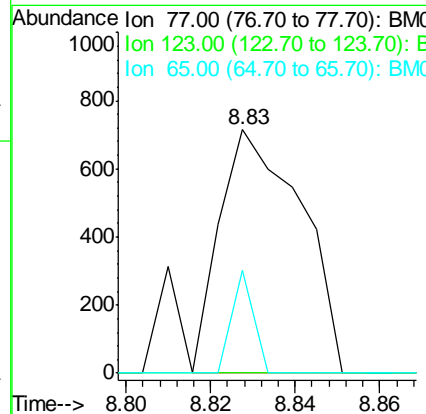
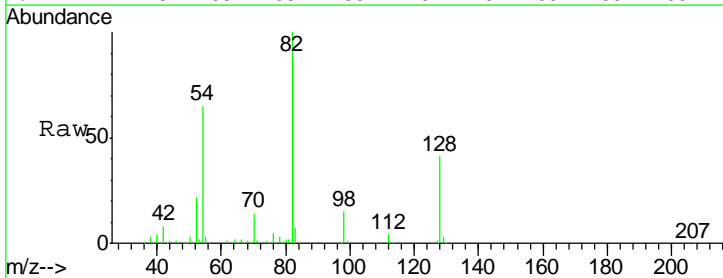
Instrument :
 BNA_M
ClientSampled :
 MDL-BLK-W

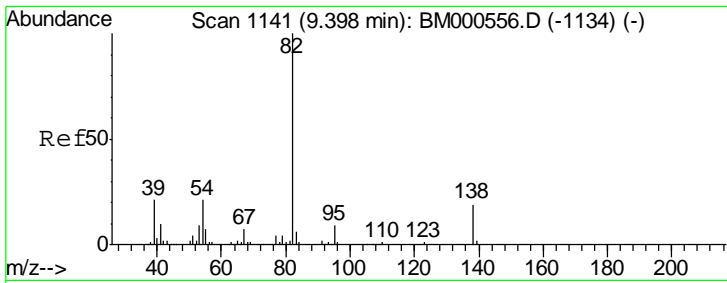
Tgt Ion	Resp	Lower	Upper
70	100		
42	398.2	63.3	94.9#
101	0.0	8.2	12.4#
130	0.0	17.8	26.8#



#18
 Nitrobenzene
 Concen: 0.12 ng/ul
 RT: 8.83 min Scan# 1044
 Delta R.T. -0.05 min
 Lab File: BM000559.D
 Acq: 20 Feb 2015 14:22

Tgt Ion	Resp	Lower	Upper
77	100		
123	0.0	35.7	53.5#
65	42.1	12.3	18.5#

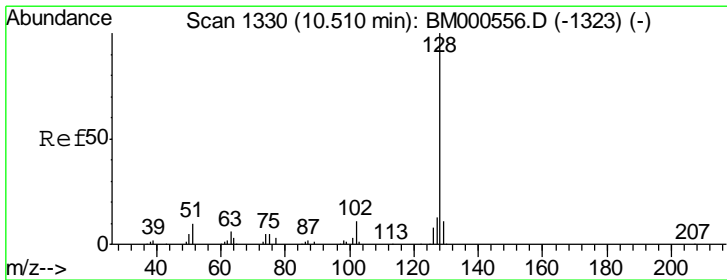
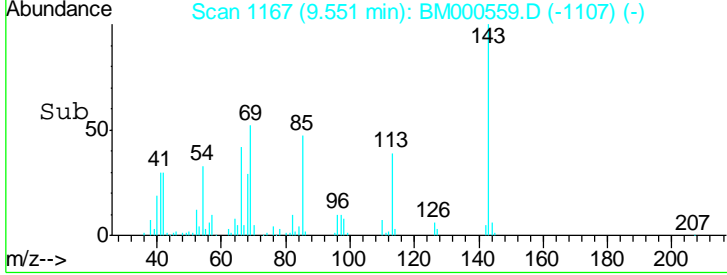
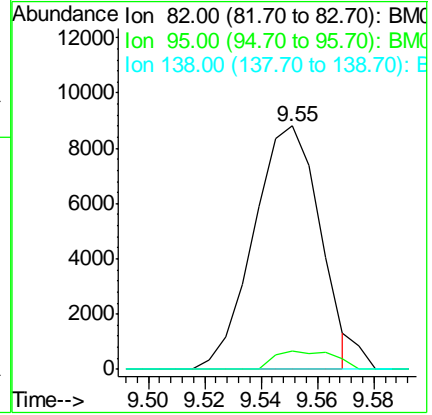
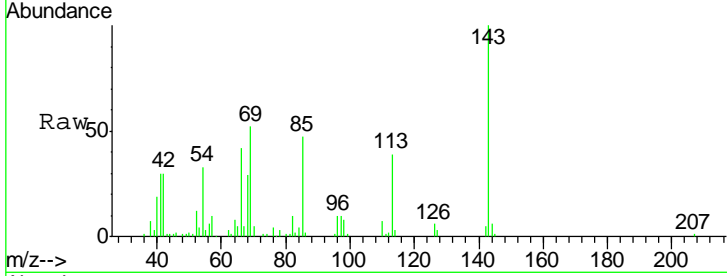




#19
 Isophorone
 Concen: 1.01 ng/ul
 RT: 9.55 min Scan# 1167
 Delta R.T. 0.15 min
 Lab File: BM000559.D
 Acq: 20 Feb 2015 14:22

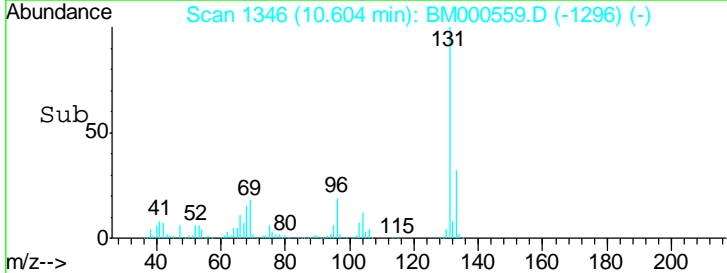
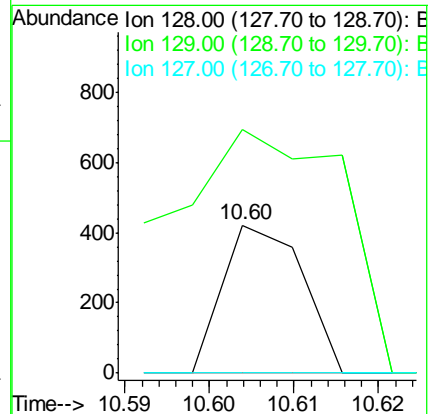
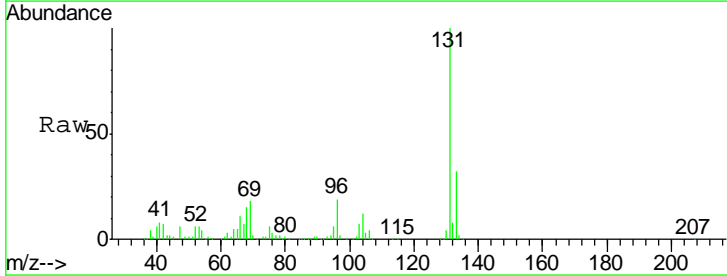
Instrument :
 BNA_M
 ClientSampled :
 MDL-BLK-W

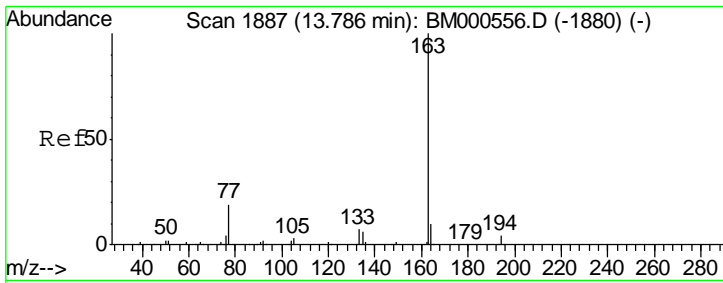
Tgt Ion	Resp	Lower	Upper
82	14245		
95	7.5	7.0	10.4
138	0.0	15.1	22.7#



#26
 Naphthalene
 Concen: 0.01 ng/ul
 RT: 10.60 min Scan# 1346
 Delta R.T. 0.09 min
 Lab File: BM000559.D
 Acq: 20 Feb 2015 14:22

Tgt Ion	Resp	Lower	Upper
128	275		
129	164.8	8.8	13.2#
127	0.0	10.4	15.6#

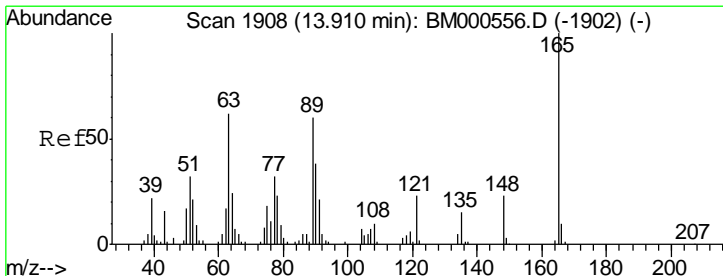
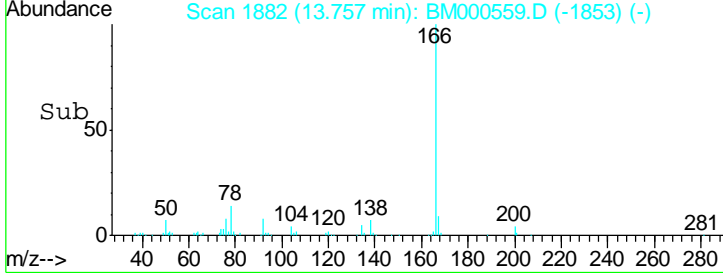
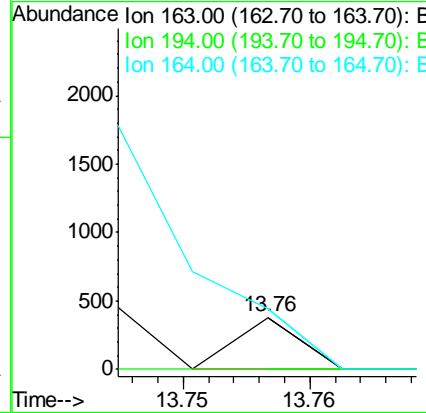
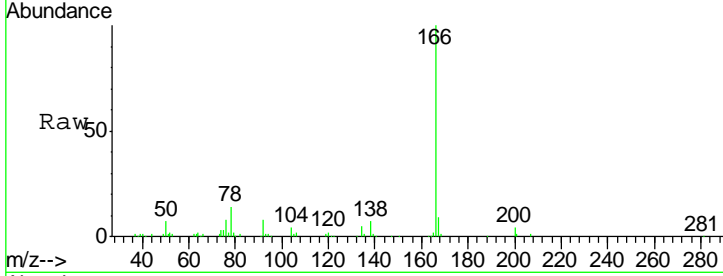




#42
 Dimethylphthalate
 Concen: 0.01 ng/ul
 RT: 13.76 min Scan# 1882
 Delta R.T. -0.03 min
 Lab File: BM000559.D
 Acq: 20 Feb 2015 14:22

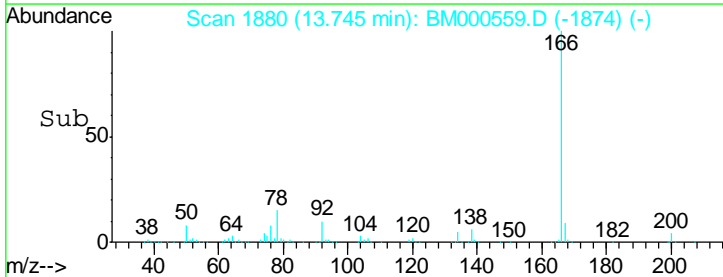
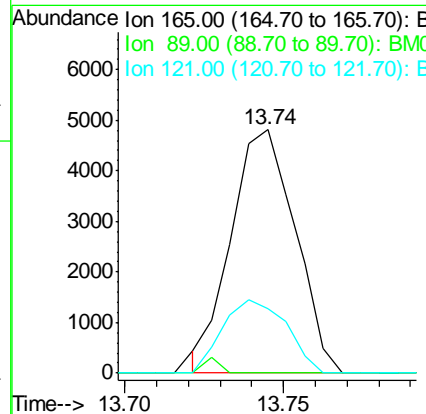
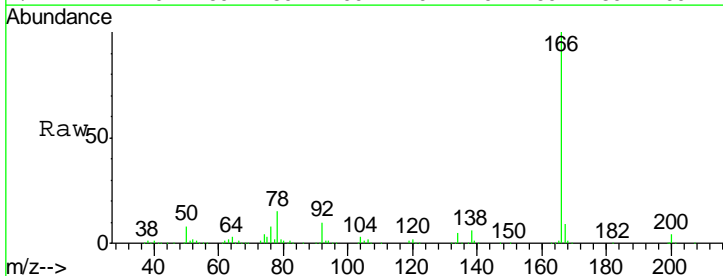
Instrument :
 BNA_M
 ClientSampled :
 MDL-BLK-W

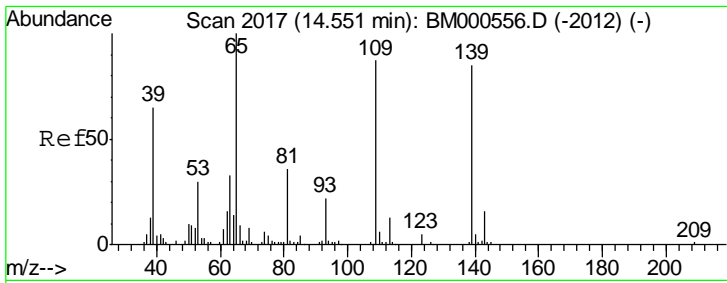
Tgt Ion	Resp	Lower	Upper
163	100		
194	0.0	3.3	4.9#
164	116.2	7.9	11.9#



#43
 2,6-Dinitrotoluene
 Concen: 1.46 ng/ul
 RT: 13.74 min Scan# 1880
 Delta R.T. -0.16 min
 Lab File: BM000559.D
 Acq: 20 Feb 2015 14:22

Tgt Ion	Resp	Lower	Upper
165	100		
89	0.0	47.8	71.8#
121	26.7	18.1	27.1

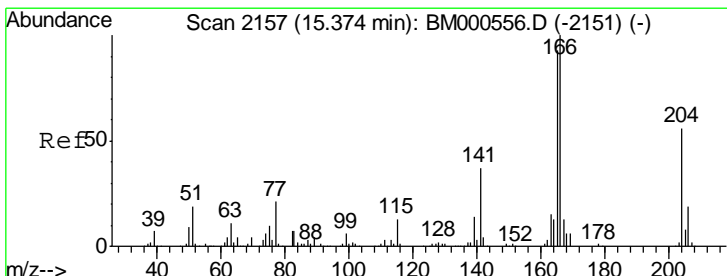
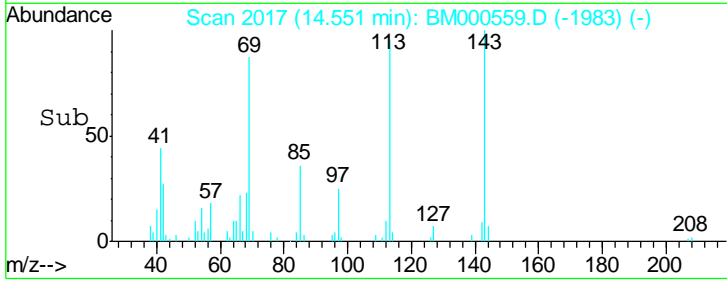
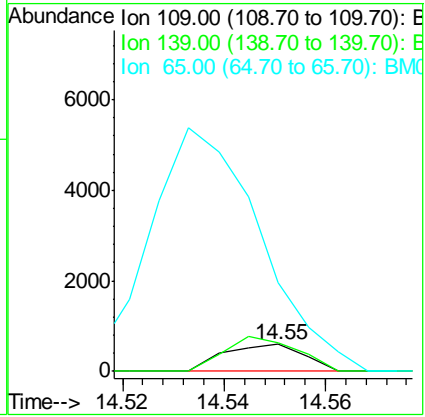
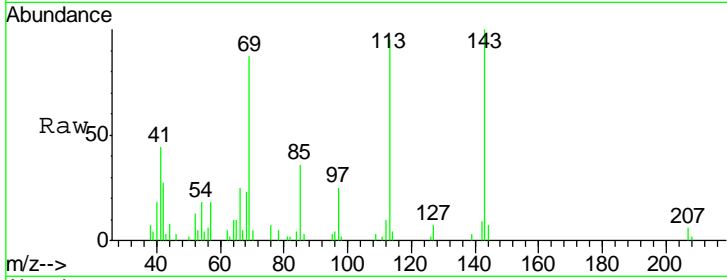




#50
 4-Nitrophenol
 Concen: 0.16 ng/ul
 RT: 14.55 min Scan# 2017
 Delta R.T. -0.00 min
 Lab File: BM000559.D
 Acq: 20 Feb 2015 14:22

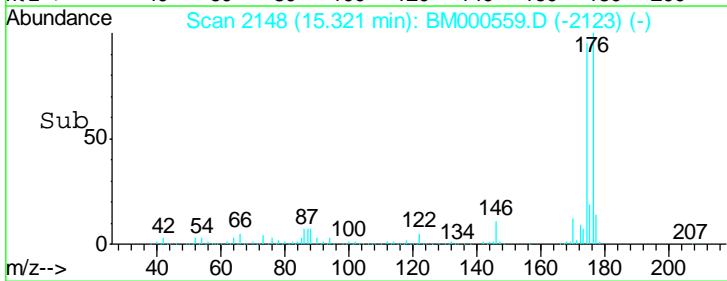
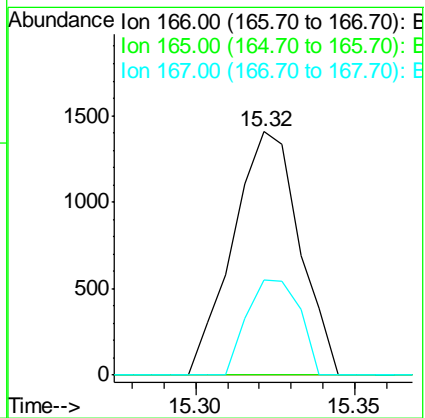
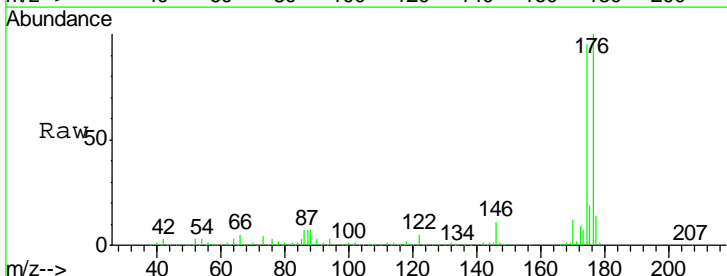
Instrument :
 BNA_M
ClientSampled :
 MDL-BLK-W

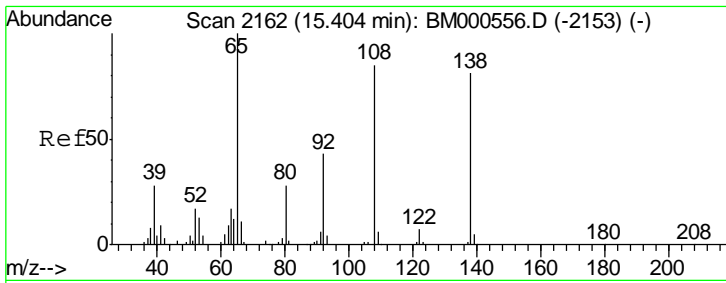
Tgt Ion	Resp	Lower	Upper
109	100		
139	106.4	78.2	117.4
65	329.1	93.7	140.5#



#56
 Fluorene
 Concen: 0.08 ng/ul
 RT: 15.32 min Scan# 2148
 Delta R.T. -0.05 min
 Lab File: BM000559.D
 Acq: 20 Feb 2015 14:22

Tgt Ion	Resp	Lower	Upper
166	100		
165	0.0	74.4	111.6#
167	39.2	10.2	15.4#

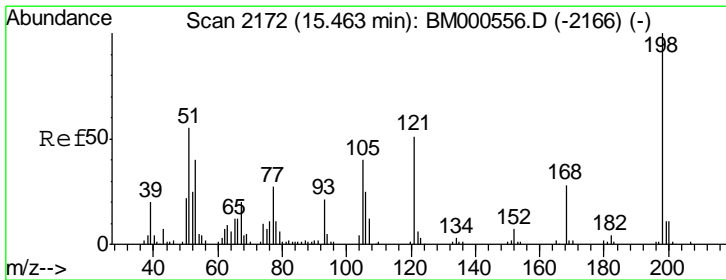
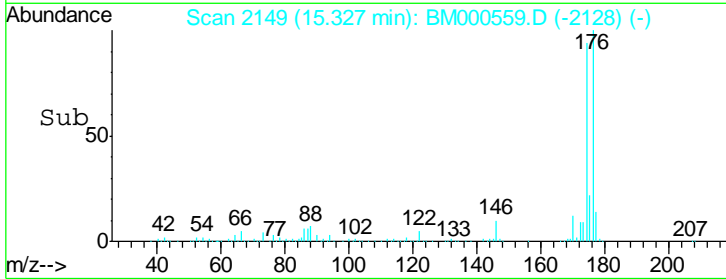
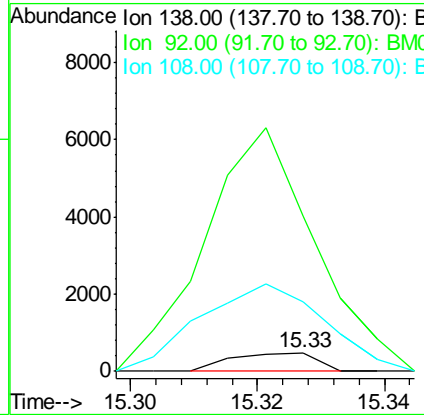
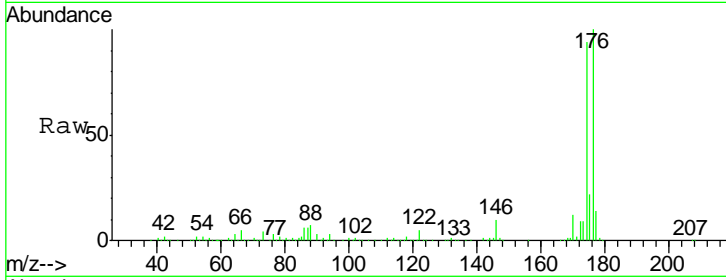




#58
 4-Nitroaniline
 Concen: 0.10 ng/ul
 RT: 15.33 min Scan# 2149
 Delta R.T. -0.08 min
 Lab File: BM000559.D
 Acq: 20 Feb 2015 14:22

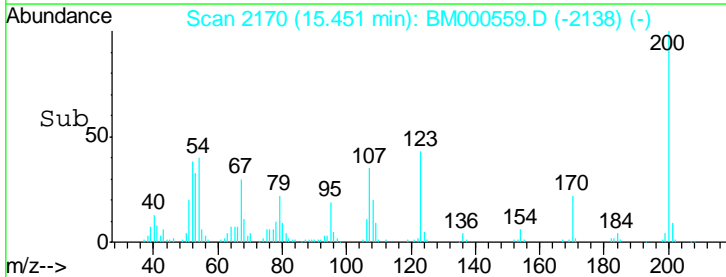
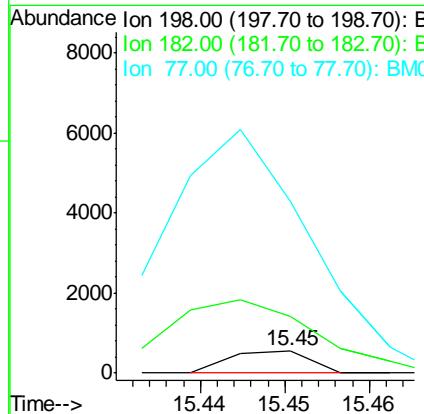
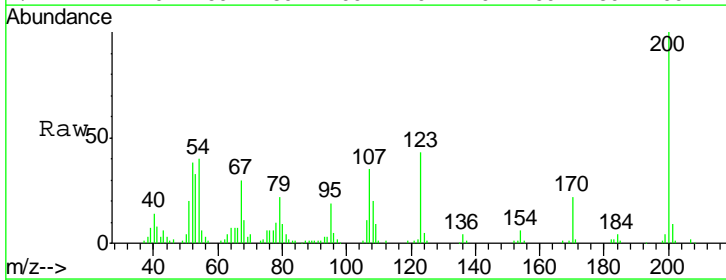
Instrument :
 BNA_M
 ClientSampled :
 MDL-BLK-W

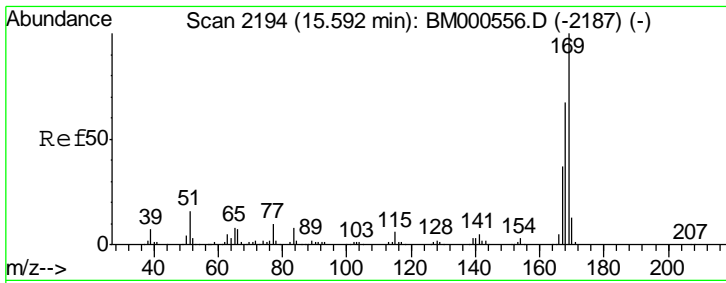
Tgt Ion	Resp	Lower	Upper
138	100		
92	833.7	42.2	63.2#
108	371.4	83.5	125.3#



#61
 4,6-Dinitro-2-methylphenol
 Concen: 0.08 ng/ul
 RT: 15.45 min Scan# 2170
 Delta R.T. -0.01 min
 Lab File: BM000559.D
 Acq: 20 Feb 2015 14:22

Tgt Ion	Resp	Lower	Upper
198	100		
182	256.6	3.2	4.8#
77	772.2	22.2	33.2#

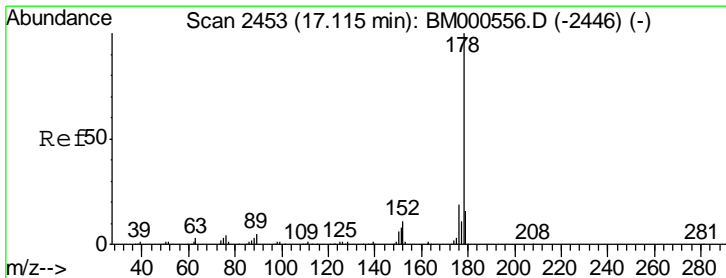
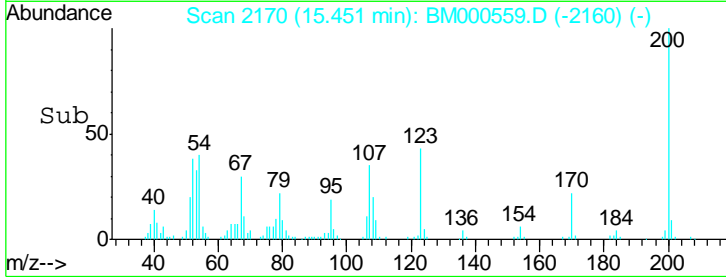
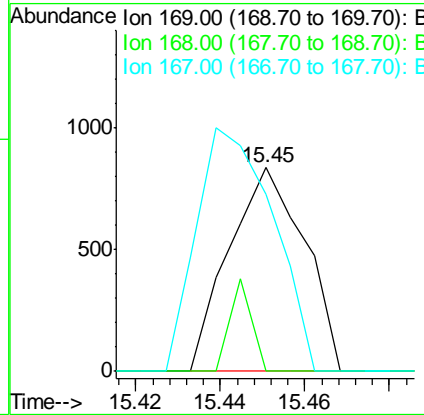
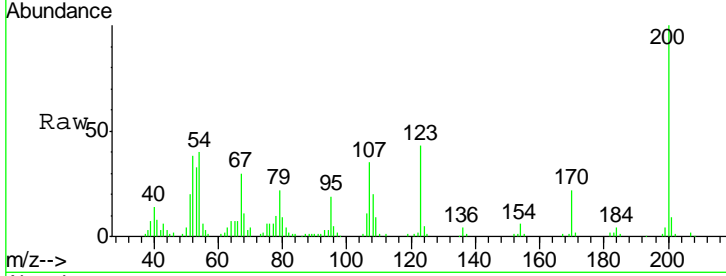




#62
 N-Nitrosodiphenylamine
 Concen: 0.05 ng/ul
 RT: 15.45 min Scan# 2170
 Delta R.T. -0.14 min
 Lab File: BM000559.D
 Acq: 20 Feb 2015 14:22

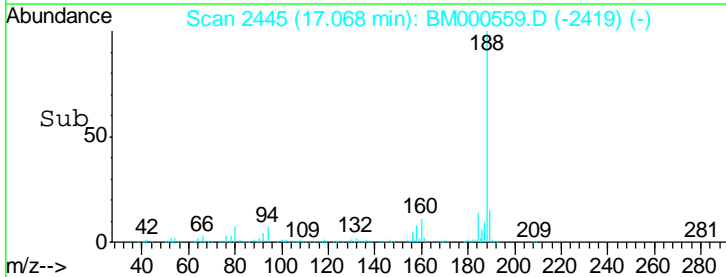
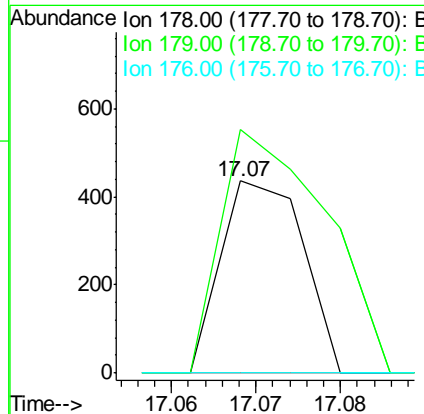
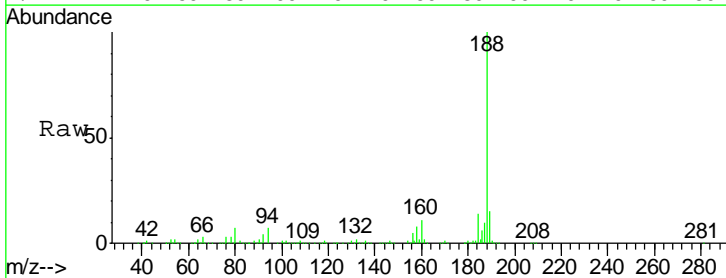
Instrument :
 BNA_M
 ClientSampled :
 MDL-BLK-W

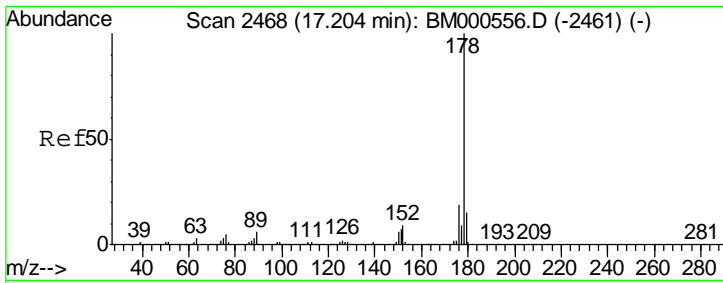
Tgt Ion	Resp	Lower	Upper
169	1036		
168	0.0	53.3	79.9#
167	87.0	29.4	44.2#



#67
 Phenanthrene
 Concen: 0.01 ng/ul
 RT: 17.07 min Scan# 2445
 Delta R.T. -0.05 min
 Lab File: BM000559.D
 Acq: 20 Feb 2015 14:22

Tgt Ion	Resp	Lower	Upper
178	293		
179	126.8	12.5	18.7#
176	0.0	15.0	22.6#

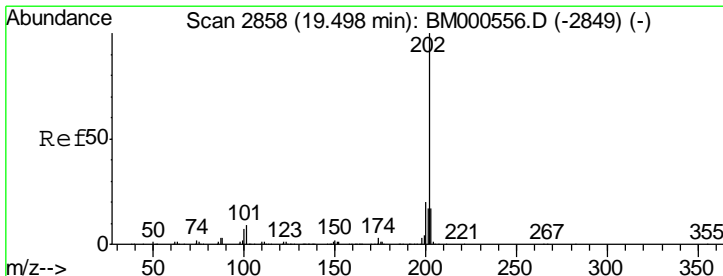
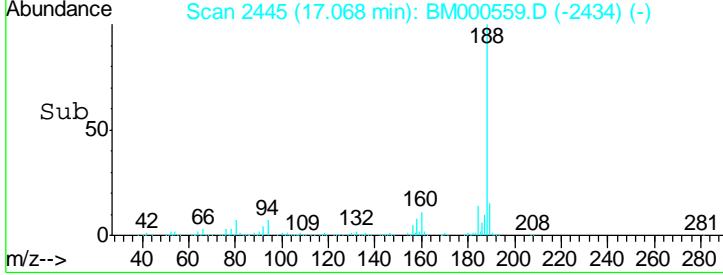
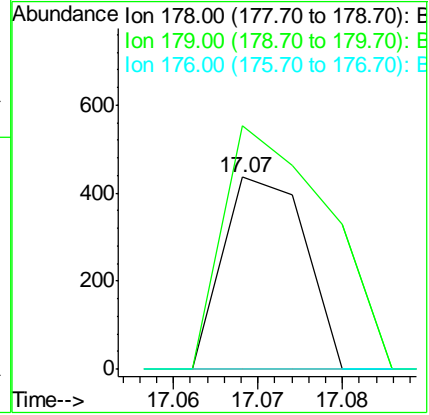
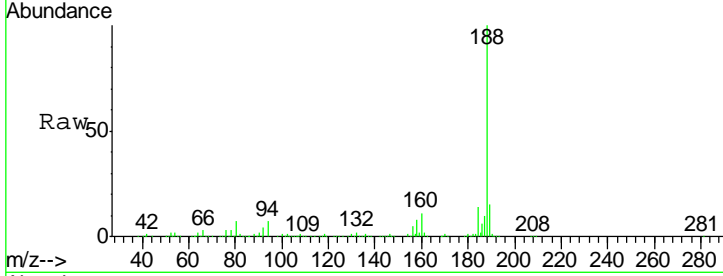




#69
 Anthracene
 Concen: 0.01 ng/ul
 RT: 17.07 min Scan# 2445
 Delta R.T. -0.14 min
 Lab File: BM000559.D
 Acq: 20 Feb 2015 14:22

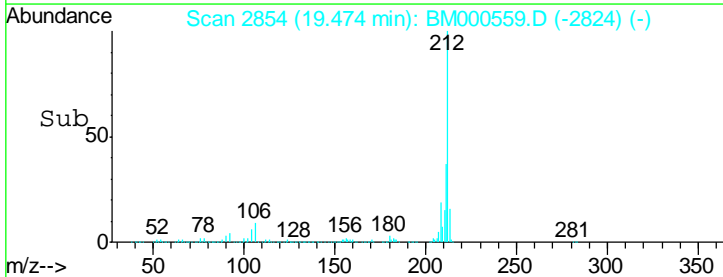
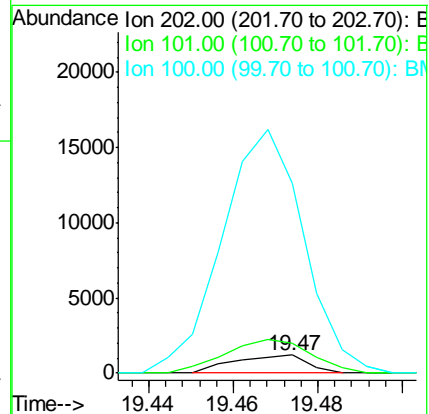
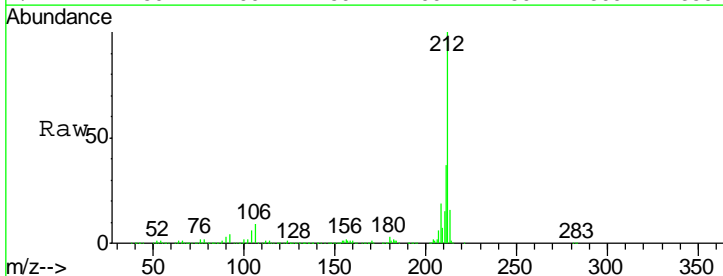
Instrument :
 BNA_M
 ClientSampled :
 MDL-BLK-W

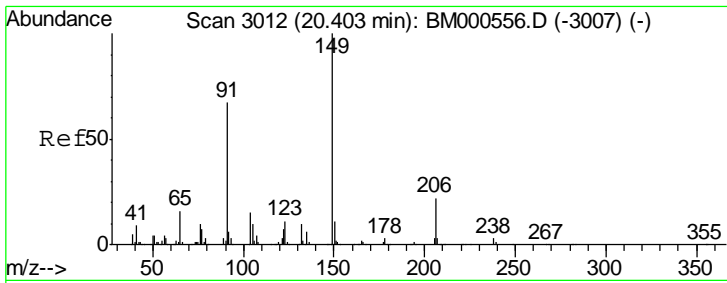
Tgt Ion	Resp	Ion Ratio	Lower	Upper
178	293	100		
179		126.8	12.2	18.4#
176		0.0	15.0	22.6#



#77
 Pyrene
 Concen: 0.03 ng/ul
 RT: 19.47 min Scan# 2854
 Delta R.T. -0.02 min
 Lab File: BM000559.D
 Acq: 20 Feb 2015 14:22

Tgt Ion	Resp	Ion Ratio	Lower	Upper
202	1455	100		
101		169.4	7.2	10.8#
100		1060.6	5.9	8.9#

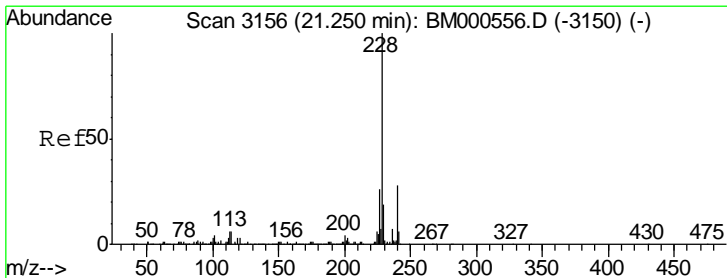
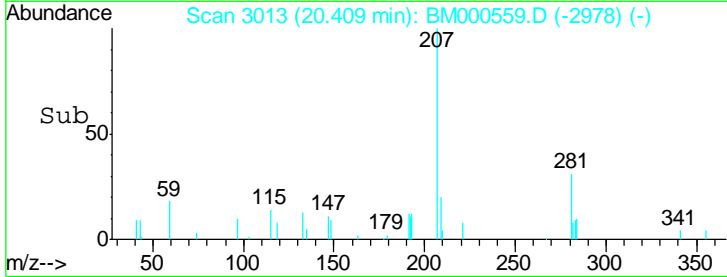
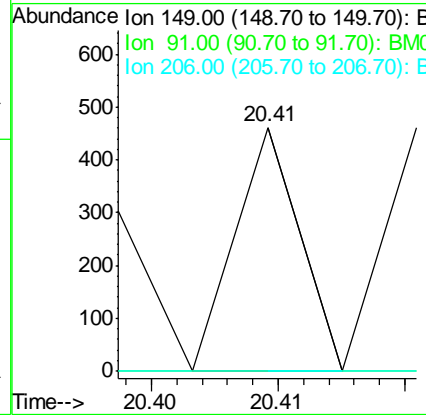
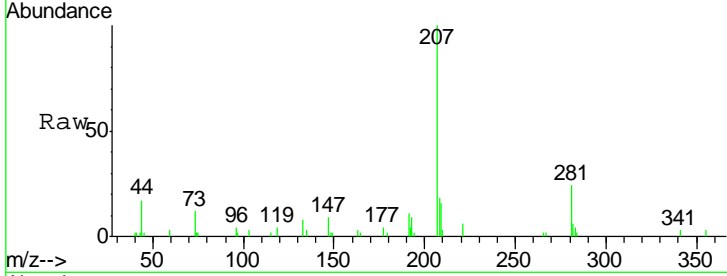




#78
 Butylbenzylphthalate
 Concen: 0.01 ng/ul
 RT: 20.41 min Scan# 3013
 Delta R.T. 0.01 min
 Lab File: BM000559.D
 Acq: 20 Feb 2015 14:22

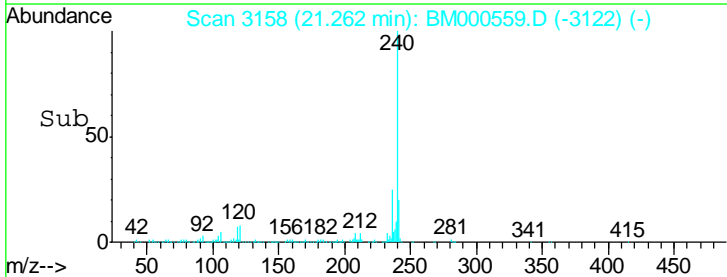
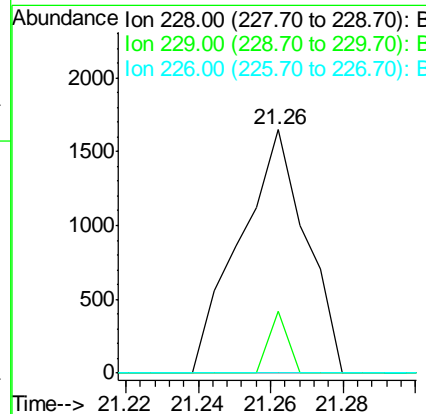
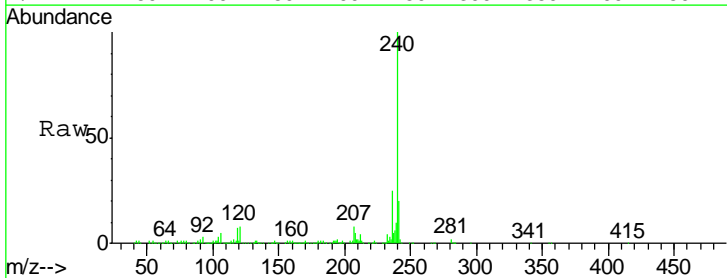
Instrument :
 BNA_M
 ClientSampled :
 MDL-BLK-W

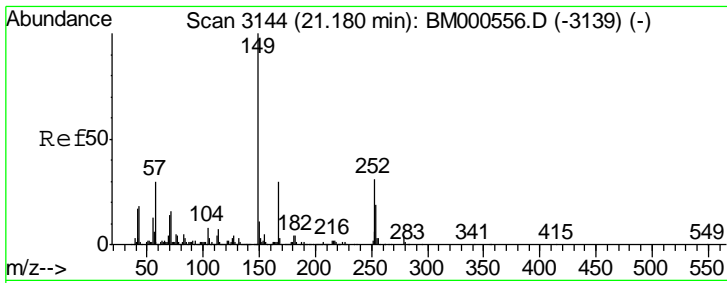
Tgt Ion	Resp	Lower	Upper
149	100		
91	0.0	53.9	80.9#
206	0.0	17.2	25.8#



#80
 Benzo(a)anthracene
 Concen: 0.05 ng/ul
 RT: 21.26 min Scan# 3158
 Delta R.T. 0.01 min
 Lab File: BM000559.D
 Acq: 20 Feb 2015 14:22

Tgt Ion	Resp	Lower	Upper
228	100		
229	25.2	15.1	22.7#
226	0.0	20.4	30.6#

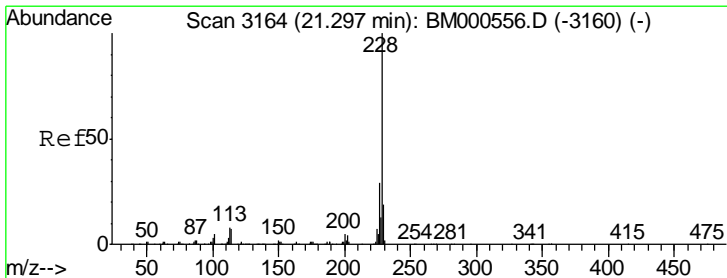
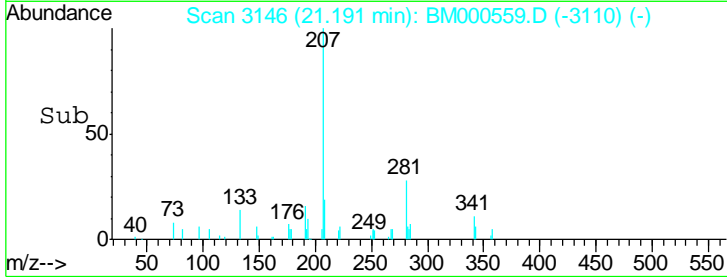
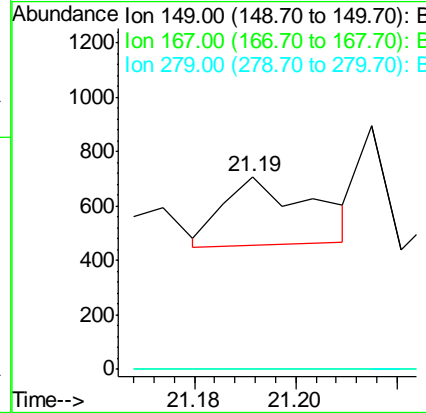
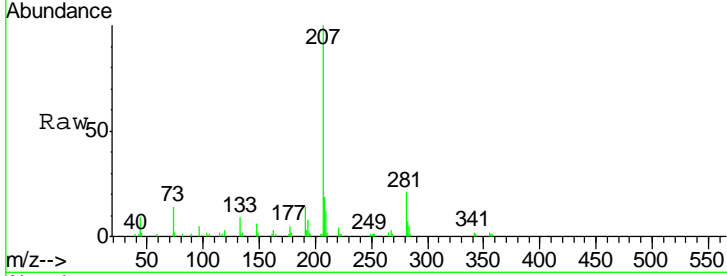




#81
 Bis(2-ethylhexyl)phthalate
 Concen: 0.01 ng/ul
 RT: 21.19 min Scan# 3146
 Delta R.T. 0.01 min
 Lab File: BM000559.D
 Acq: 20 Feb 2015 14:22

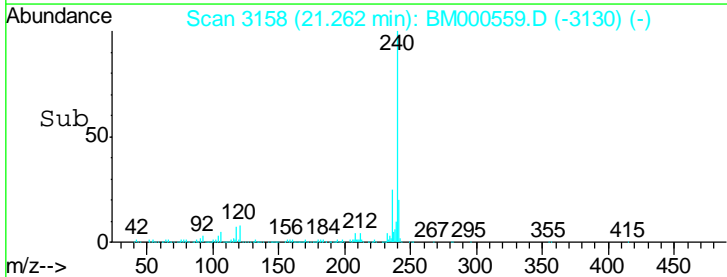
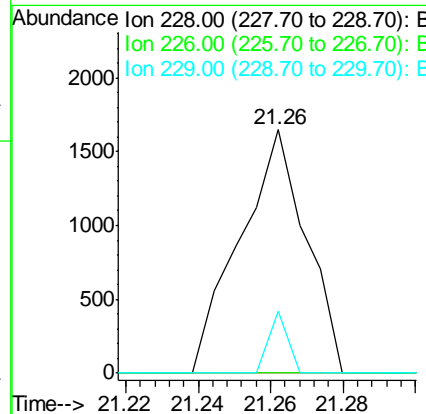
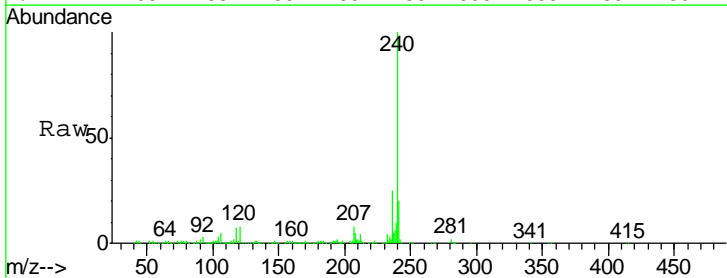
Instrument :
 BNA_M
 ClientSampled :
 MDL-BLK-W

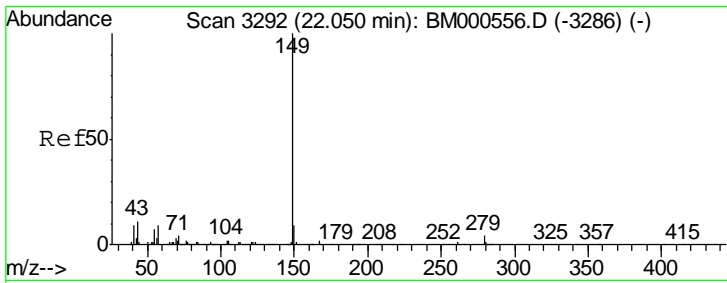
Tgt Ion	Resp	Lower	Upper
149	100		
167	0.0	23.8	35.6#
279	0.0	3.4	5.2#



#82
 Chrysene
 Concen: 0.06 ng/ul
 RT: 21.26 min Scan# 3158
 Delta R.T. -0.04 min
 Lab File: BM000559.D
 Acq: 20 Feb 2015 14:22

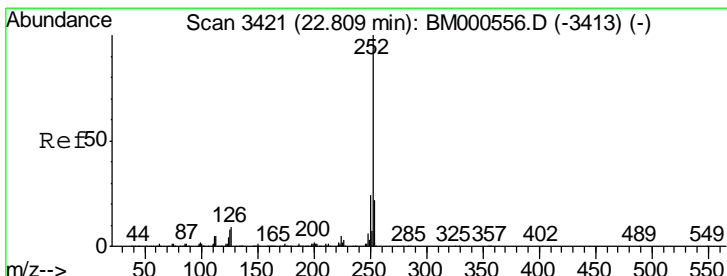
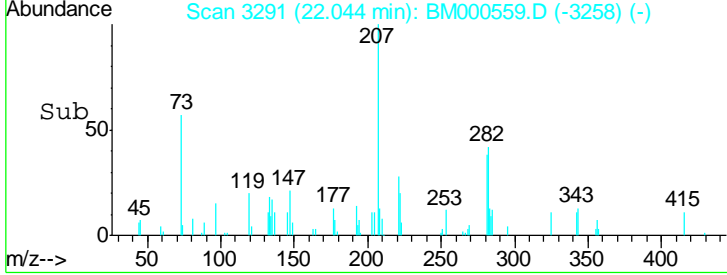
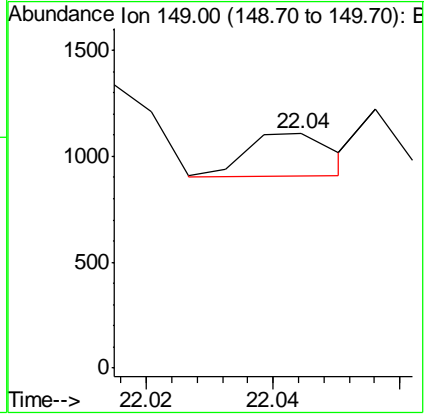
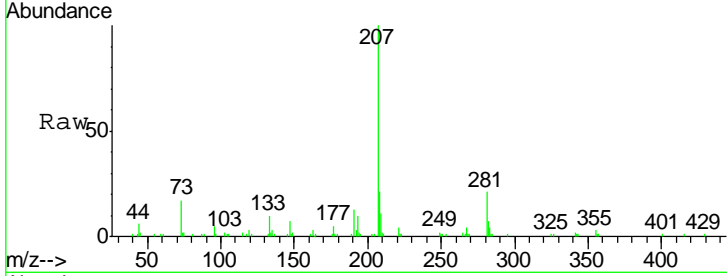
Tgt Ion	Resp	Lower	Upper
228	100		
226	0.0	23.0	34.6#
229	25.2	15.3	22.9#





#84
 Di-n-octyl phthalate
 Concen: 0.01 ng/ul
 RT: 22.04 min Scan# 3291
 Delta R.T. -0.01 min
 Lab File: BM000559.D
 Acq: 20 Feb 2015 14:22
 Tgt Ion:149 Resp: 193

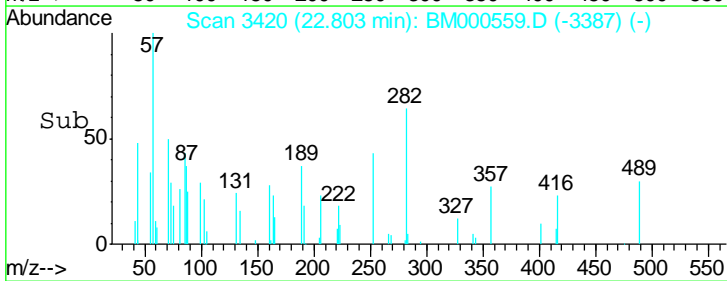
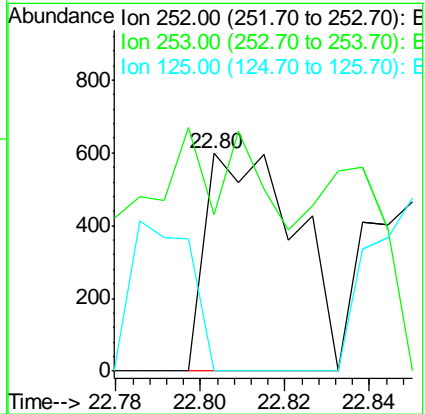
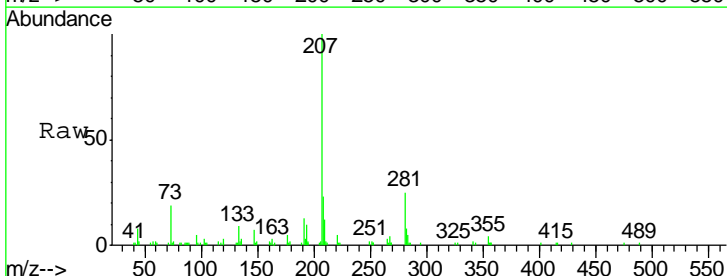
Instrument :
 BNA_M
 ClientSampleId :
 MDL-BLK-W

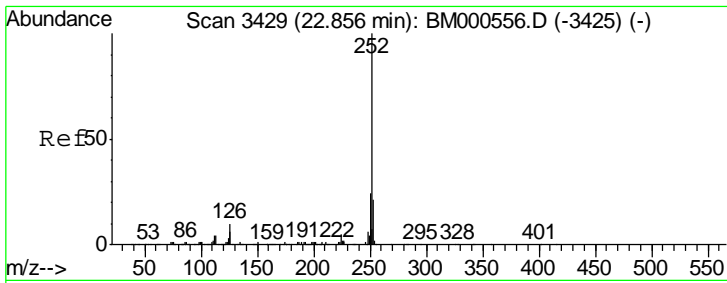


#85
 Benzo(b)fluoranthene
 Concen: 0.03 ng/ul
 RT: 22.80 min Scan# 3420
 Delta R.T. -0.01 min
 Lab File: BM000559.D
 Acq: 20 Feb 2015 14:22

Tgt Ion:252 Resp: 883

Ion	Ratio	Lower	Upper
252	100		
253	71.6	17.4	26.0#
125	0.0	6.2	9.2#

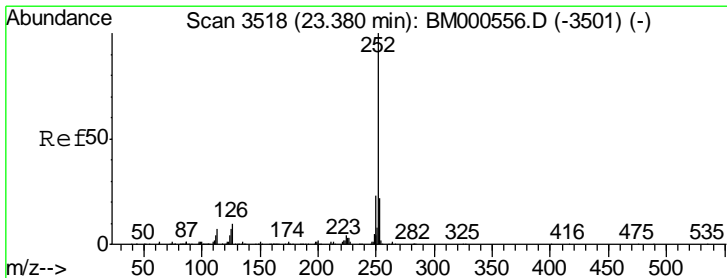
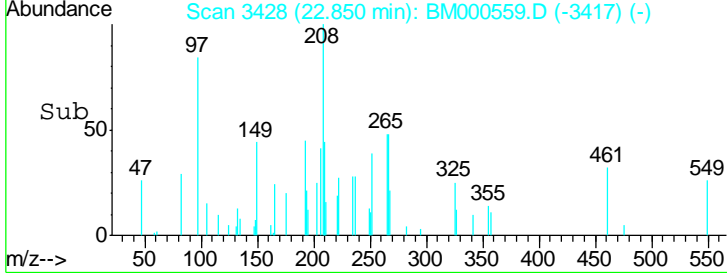
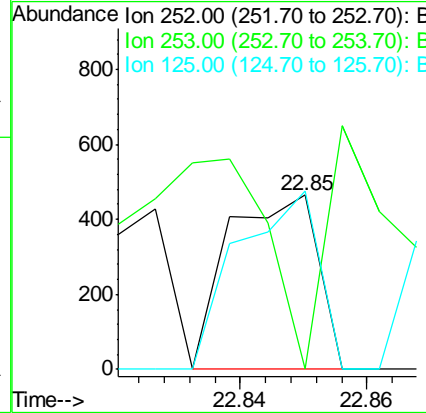
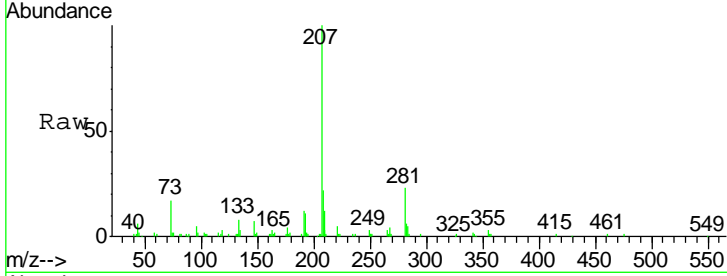




#86
 Benzo(k)fluoranthene
 Concen: 0.02 ng/ul
 RT: 22.85 min Scan# 3428
 Delta R.T. -0.01 min
 Lab File: BM000559.D
 Acq: 20 Feb 2015 14:22

Instrument :
 BNA_M
 ClientSampled :
 MDL-BLK-W

Tgt Ion	Resp	Lower	Upper
252	100		
253	0.0	17.1	25.7#
125	102.6	5.3	7.9#



#88
 Benzo(a)pyrene
 Concen: 0.01 ng/ul
 RT: 23.38 min Scan# 3518
 Delta R.T. -0.00 min
 Lab File: BM000559.D
 Acq: 20 Feb 2015 14:22

Tgt Ion	Resp	Lower	Upper
252	100		
253	134.3	17.5	26.3#
125	0.0	5.4	8.0#

