

Data Path : Z:\HPCHEM1\BNA\_M\DATA\BM022417\  
 Data File : BM009015.D  
 Acq On : 24 Feb 2017 13:27  
 Operator : SJ/MA  
 Sample : I1940-03  
 Misc :  
 ALS Vial : 7 Sample Multiplier: 1

Instrument :  
 BNA\_M  
 ClientSampleId :  
 DABP8

## Integration Parameters: LSCINT.P

Integrator: RTE  
 Smoothing : OFF Filtering: 5  
 Sampling : 1 Min Area: 1 % of largest Peak  
 Start Thrs: 0.2 Max Peaks: 100  
 Stop Thrs : 0 Peak Location: TOP

If leading or trailing edge < 100 prefer < Baseline drop else tangent >  
 Peak separation: 5

Method : Z:\HPCHEM1\BNA\_M\METHODS\SOM02.2-EPA-BM022317.M  
 Title : SVOA CALIBRATION

Signal : TIC

peak #	R.T. min	first scan	max scan	last scan	PK TY	peak height	corr. area	corr. % max.	% of total
1	3.363	42	47	57	rVB	56047	87380	2.01%	0.198%
2	4.416	222	226	235	rVB3	30047	43968	1.01%	0.099%
3	4.616	255	260	266	rVB6	28957	52504	1.21%	0.119%
4	7.051	668	674	685	rBV2	765466	1371925	31.49%	3.104%
5	7.228	698	704	714	rBV	558796	868309	19.93%	1.965%
6	7.428	731	738	745	rBV	759593	1160536	26.64%	2.626%
7	7.898	811	818	825	rBV	631010	997909	22.91%	2.258%
8	8.592	930	936	943	rBV	836454	1330949	30.55%	3.012%
9	9.063	1008	1016	1026	rBV	704526	1142142	26.22%	2.584%
10	9.781	1126	1138	1149	rVB	550716	941448	21.61%	2.130%
11	10.316	1221	1229	1237	rBV	803677	1356004	31.13%	3.068%
12	10.698	1287	1294	1302	rBV	745347	1280360	29.39%	2.897%
13	10.839	1311	1318	1327	rBV	773087	1310351	30.08%	2.965%
14	13.945	1837	1846	1850	rBV	1395735	1950903	44.78%	4.414%
15	13.992	1850	1854	1859	rVB	227085	304837	7.00%	0.690%
16	14.233	1888	1895	1903	rBV	1499205	2145474	49.25%	4.855%
17	14.445	1928	1931	1936	rVV3	53789	79945	1.84%	0.181%
18	14.539	1940	1947	1954	rVB2	1058581	1625782	37.32%	3.679%
19	14.721	1973	1978	1992	rBV	645117	915911	21.02%	2.072%
20	15.368	2082	2088	2093	rVB2	75144	103188	2.37%	0.233%
21	15.533	2109	2116	2127	rVB	1962482	2849796	65.42%	6.448%
22	15.645	2129	2135	2142	rVV	640651	885037	20.32%	2.003%
23	15.768	2145	2156	2160	rBV7	52750	90663	2.08%	0.205%
24	16.233	2229	2235	2243	rBV	484934	725971	16.66%	1.643%
25	17.021	2364	2369	2373	rBV	71215	86167	1.98%	0.195%
26	17.286	2407	2414	2421	rBV2	1432319	2092418	48.03%	4.735%
27	17.386	2424	2431	2439	rVV	2185260	3202998	73.52%	7.247%
28	17.939	2520	2525	2528	rBV2	73476	89732	2.06%	0.203%
29	18.156	2557	2562	2572	rBV2	314679	456349	10.48%	1.033%
30	19.309	2751	2758	2761	rBV6	45082	92147	2.12%	0.209%
31	19.427	2774	2778	2783	rBV3	169667	237831	5.46%	0.538%
32	19.674	2813	2820	2826	rBV	2926645	3983593	91.44%	9.014%
33	21.139	3066	3069	3075	rBV	355511	434846	9.98%	0.984%
34	21.456	3118	3123	3132	rVB	2221734	2772076	63.63%	6.272%

Data Path : Z:\HPCHEM1\BNA\_M\DATA\BM022417\  
Data File : BM009015.D  
Acq On : 24 Feb 2017 13:27  
Operator : SJ/MA  
Sample : I1940-03  
Misc :  
ALS Vial : 7 Sample Multiplier: 1

Instrument :  
BNA\_M  
ClientSampleId :  
DABP8

Integration Parameters: LSCINT.P  
Integrator: RTE  
Smoothing : OFF Filtering: 5  
Sampling : 1 Min Area: 1 % of largest Peak  
Start Thrs: 0.2 Max Peaks: 100  
Stop Thrs : 0 Peak Location: TOP

If leading or trailing edge < 100 prefer < Baseline drop else tangent >  
Peak separation: 5

Method : Z:\HPCHEM1\BNA\_M\METHODS\SOM02.2-EPA-BM022317.M  
Title : SVOA CALIBRATION

35	23.650	3489	3496	3507	rVB2	2254065	4356470	100.00%	9.857%
36	23.803	3515	3522	3530	rVB	1386217	2769079	63.56%	6.266%

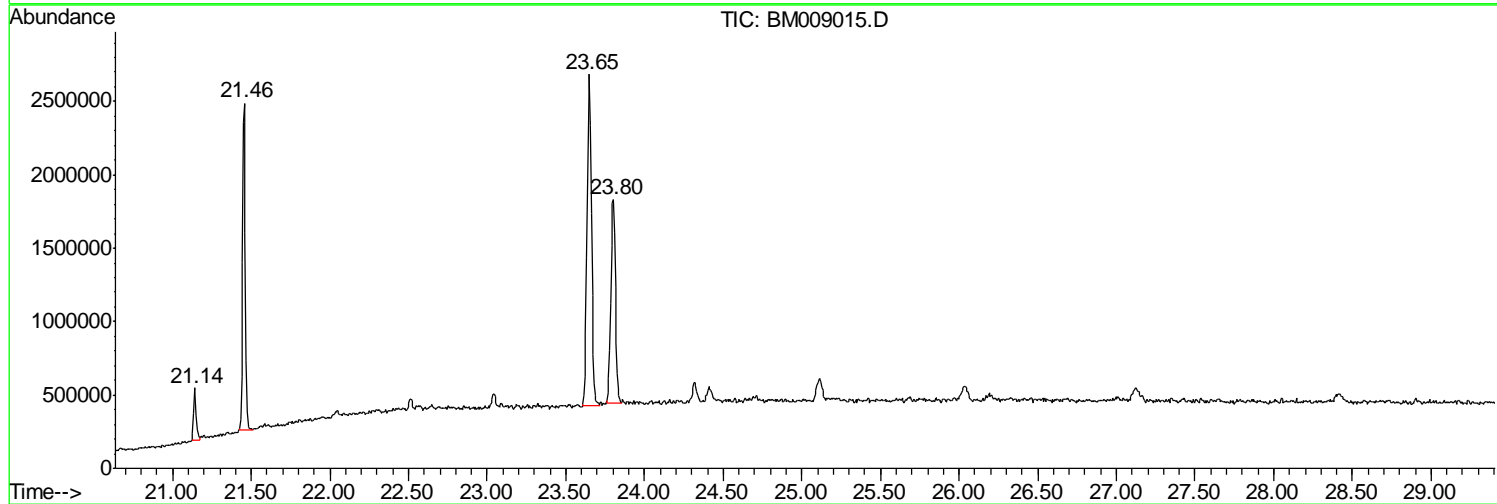
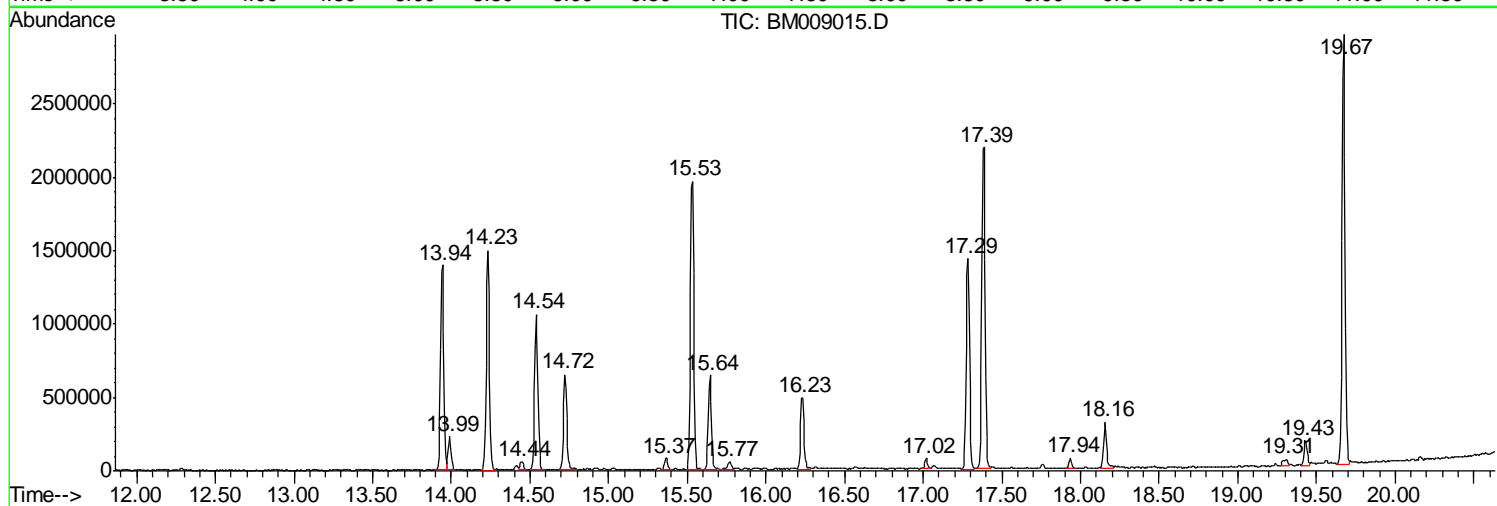
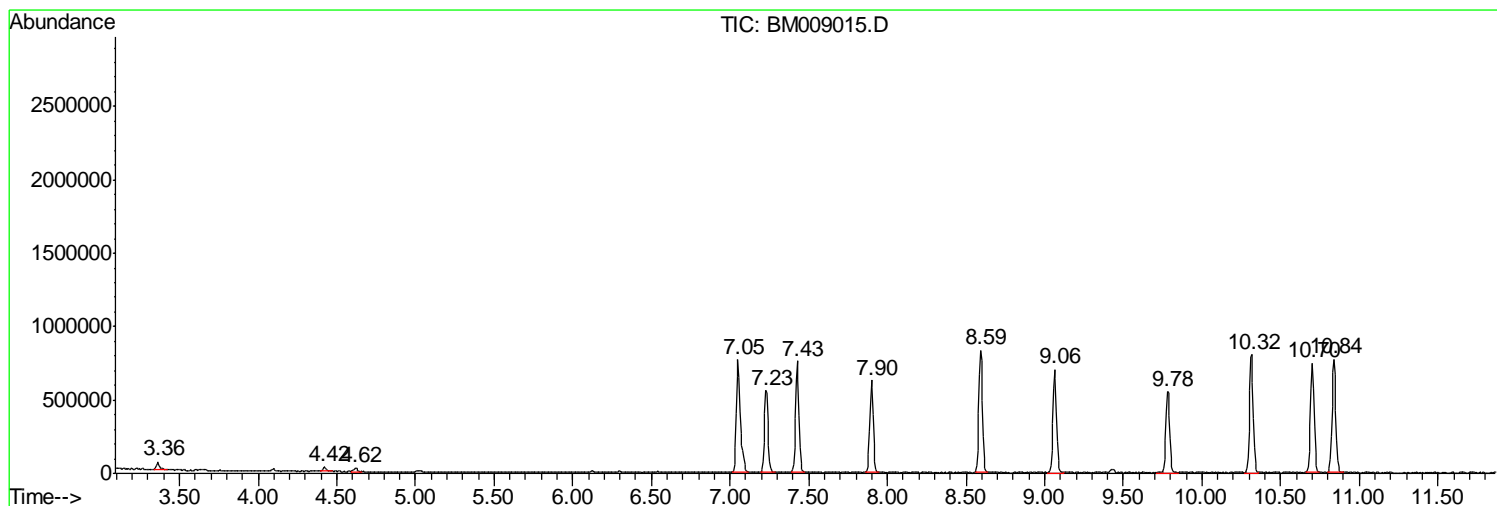
Sum of corrected areas: 44194998

Data Path : Z:\HPCHEM1\BNA\_M\DATA\BM022417\  
 Data File : BM009015.D  
 Acq On : 24 Feb 2017 13:27  
 Operator : SJ/MA  
 Sample : I1940-03  
 Misc :  
 ALS Vial : 7 Sample Multiplier: 1

Instrument :  
 BNA\_M  
 ClientSampled :  
 DABP8

Quant Method : Z:\HPCHEM1\BNA\_M\METHODS\SOM02.2-EPA-BM022317.M  
 Quant Title : SVOA CALIBRATION

TIC Library : C:\DATABASE\NIST11.L  
 TIC Integration Parameters: LSCINT.P



Data Path : Z:\HPCHEM1\BNA\_M\DATA\BM022417\  
 Data File : BM009015.D  
 Acq On : 24 Feb 2017 13:27  
 Operator : SJ/MA  
 Sample : I1940-03  
 Misc :  
 ALS Vial : 7 Sample Multiplier: 1

Instrument :  
 BNA\_M  
 ClientSampleID :  
 DABP8

Quant Method : Z:\HPCHEM1\BNA\_M\METHODS\SOM02.2-EPA-BM022317.M  
 Quant Title : SVOA CALIBRATION

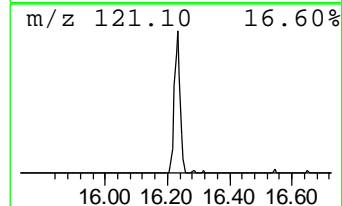
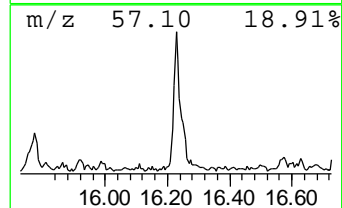
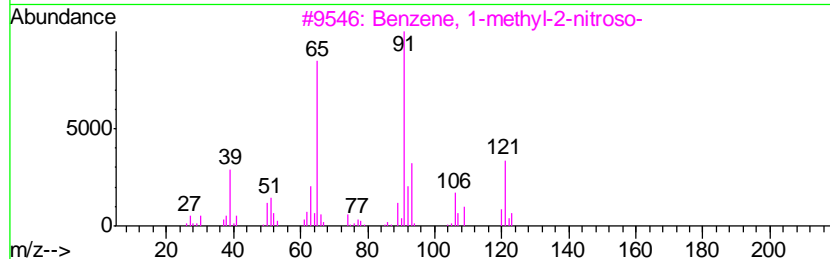
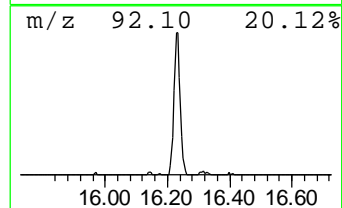
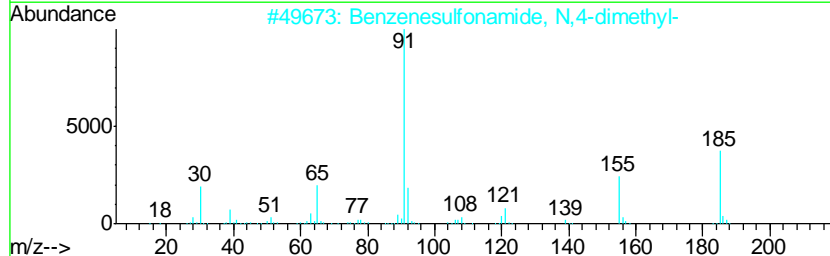
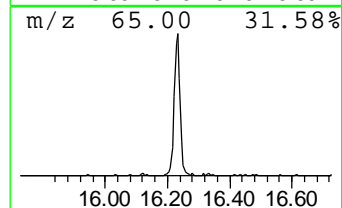
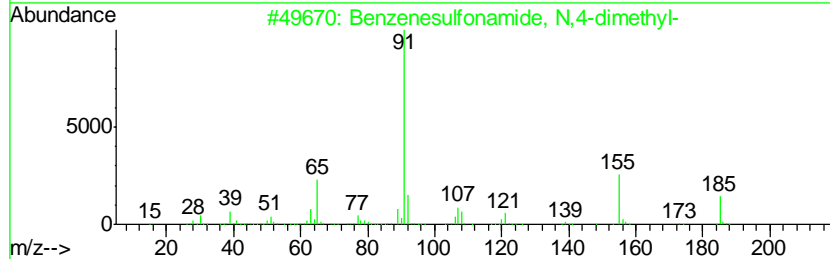
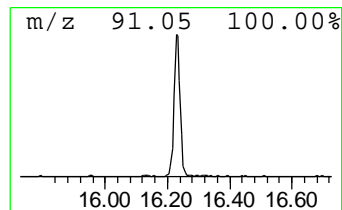
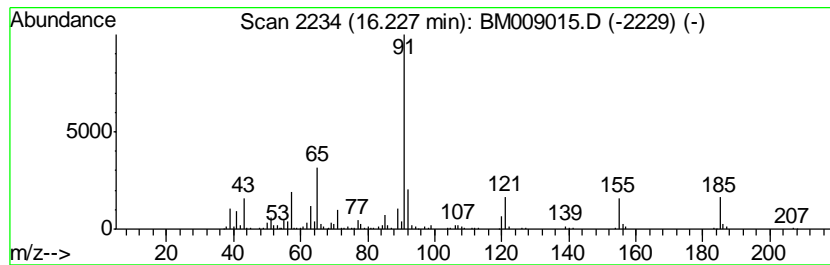
TIC Library : C:\DATABASE\NIST11.L  
 TIC Integration Parameters: LSCINT.P

\*\*\*\*\*  
 Peak Number 1 Benzenesulfonamide, N,4-dim... Concentration Rank 1

R.T.	EstConc	Area	Relative to ISTD	R.T.
16.23	6.94 ng/ul	725971	Phenanthrene-d10	17.29

Hit#	of	Tentative ID	MW	MolForm	CAS#	Qual
1	5	Benzenesulfonamide, N,4-dimethyl-	185	C8H11NO2S	000640-61-9	80
2		Benzenesulfonamide, N,4-dimethyl-	185	C8H11NO2S	000640-61-9	80
3		Benzene, 1-methyl-2-nitroso-	121	C7H7NO	000611-23-4	76
4		Benzenesulfonamide, N,4-dimethyl-	185	C8H11NO2S	000640-61-9	58
5		Benzaldehyde, 4-benzyloxy-3.5-di...	240	C16H16O2	144896-51-5	50



Data Path : Z:\HPCHEM1\BNA\_M\DATA\BM022417\  
 Data File : BM009015.D  
 Acq On : 24 Feb 2017 13:27  
 Operator : SJ/MA  
 Sample : I1940-03  
 Misc :  
 ALS Vial : 7 Sample Multiplier: 1

Instrument :  
 BNA\_M  
 ClientSampleID :  
 DABP8

Quant Method : Z:\HPCHEM1\BNA\_M\METHODS\SOM02.2-EPA-BM022317.M  
 Quant Title : SVOA CALIBRATION

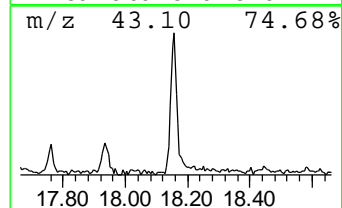
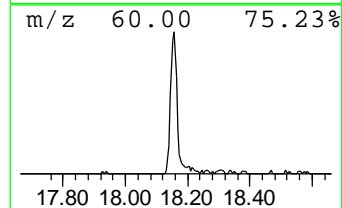
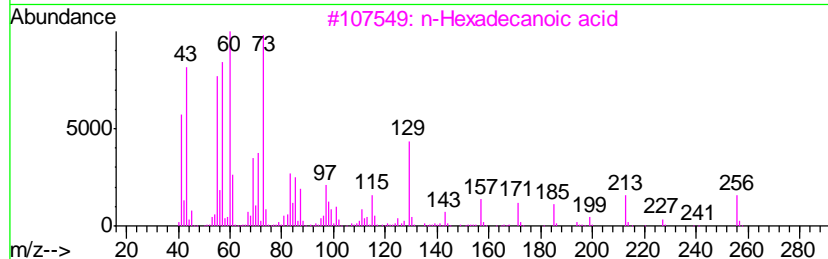
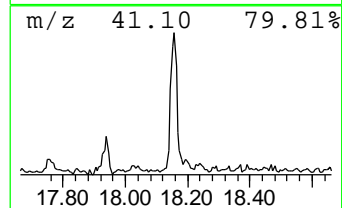
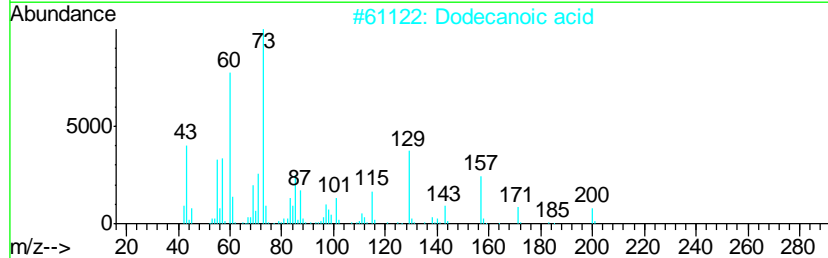
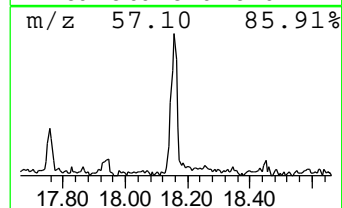
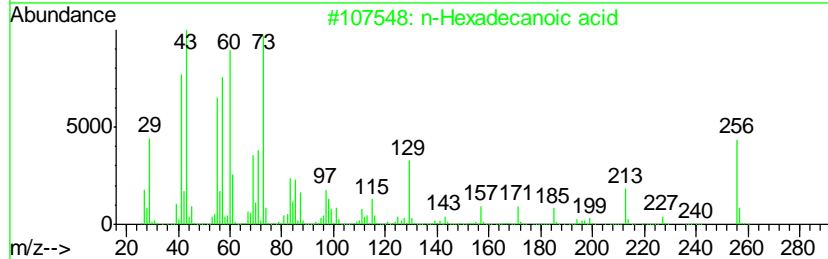
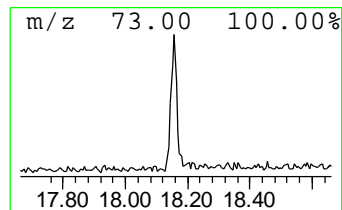
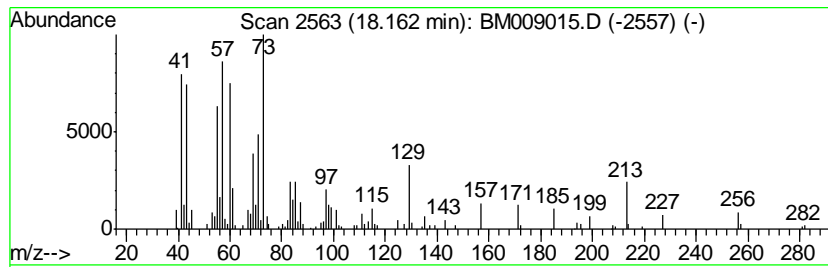
TIC Library : C:\DATABASE\NIST11.L  
 TIC Integration Parameters: LSCINT.P

\*\*\*\*\*  
 Peak Number 2 n-Hexadecanoic acid Concentration Rank 2

R.T.	EstConc	Area	Relative to ISTD	R.T.
18.16	4.36 ng/ul	456349	Phenanthrene-d10	17.29

Hit#	of	Tentative ID	MW	MolForm	CAS#	Qual
1	5	n-Hexadecanoic acid	256	C16H32O2	000057-10-3	97
2		Dodecanoic acid	200	C12H24O2	000143-07-7	83
3		n-Hexadecanoic acid	256	C16H32O2	000057-10-3	70
4		Pentadecanoic acid	242	C15H30O2	001002-84-2	53
5		Tetradecanoic acid	228	C14H28O2	000544-63-8	50



Data Path : Z:\HPCHEM1\BNA\_M\DATA\BM022417\  
 Data File : BM009015.D  
 Acq On : 24 Feb 2017 13:27  
 Operator : SJ/MA  
 Sample : I1940-03  
 Misc :  
 ALS Vial : 7 Sample Multiplier: 1

Instrument :  
 BNA\_M  
 ClientSampleID :  
 DABP8

Quant Method : Z:\HPCHEM1\BNA\_M\METHODS\SOM02.2-EPA-BM022317.M  
 Quant Title : SVOA CALIBRATION

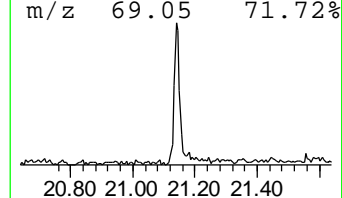
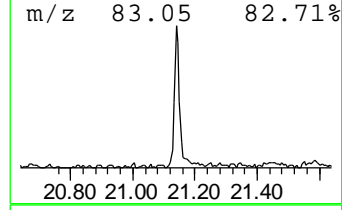
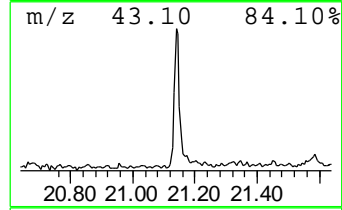
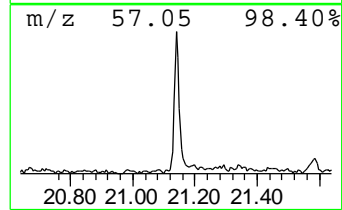
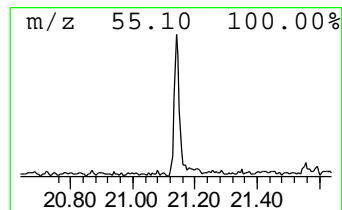
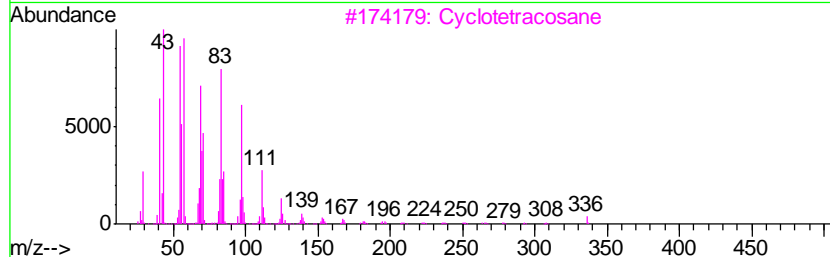
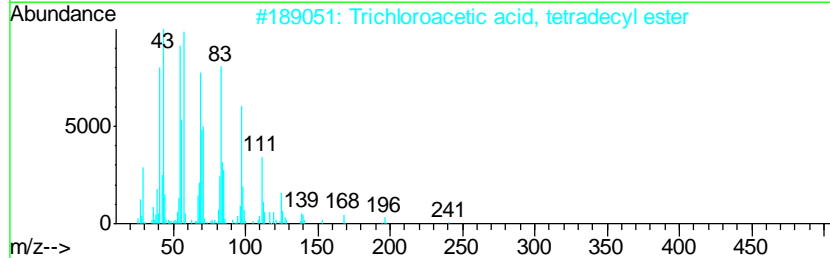
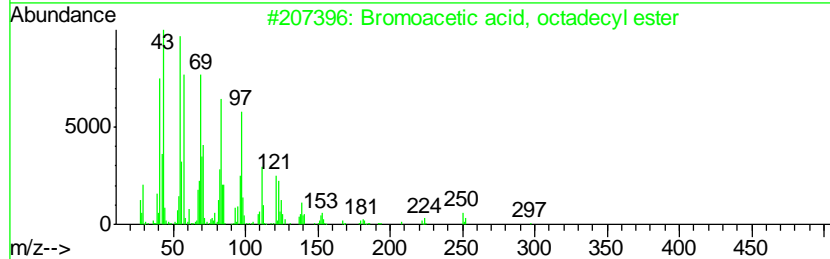
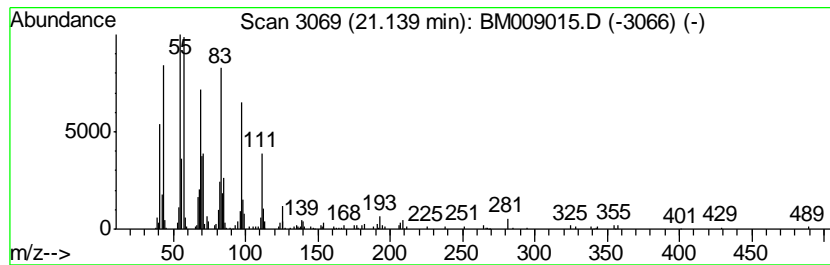
TIC Library : C:\DATABASE\NIST11.L  
 TIC Integration Parameters: LSCINT.P

\*\*\*\*\*  
 Peak Number 3 Bromoacetic acid, octadecyl... Concentration Rank 3

R.T.	EstConc	Area	Relative to ISTD	R.T.
21.14	3.14 ng/ul	434846	Chrysene-d12	21.46

Hit#	of	Tentative ID	MW	MolForm	CAS#	Qual
1	5	Bromoacetic acid, octadecyl ester	390	C20H39BrO2	018992-03-5	91
2		Trichloroacetic acid, tetradecyl...	358	C16H29Cl3O2	074339-52-9	90
3		Cyclotetracosane	336	C24H48	000297-03-0	90
4		1-Docosanethiol	342	C22H46S	007773-83-3	87
5		Cyclooctadecane, ethyl-	280	C20H40	1000151-22-5	87



Data Path : Z:\HPCHEM1\BNA\_M\DATA\BM022417\  
Data File : BM009015.D  
Acq On : 24 Feb 2017 13:27  
Operator : SJ/MA  
Sample : I1940-03  
Misc :  
ALS Vial : 7 Sample Multiplier: 1

Instrument :  
BNA\_M  
ClientSampleId :  
DABP8

Quant Method : Z:\HPCHEM1\BNA\_M\METHODS\SOM02.2-EPA-BM022317.M  
Quant Title : SVOA CALIBRATION

TIC Library : C:\DATABASE\NIST11.L  
TIC Integration Parameters: LSCINT.P

TIC Top Hit name	RT	EstConc	Units	Response	--Internal Standard--			
					#	RT	Resp	Conc
Benzenesulfonamid...	16.23	6.9	ng/ul	725971	4	17.29	2092420	20.0
n-Hexadecanoic acid	18.16	4.4	ng/ul	456349	4	17.29	2092420	20.0
Bromoacetic acid,...	21.14	3.1	ng/ul	434846	5	21.46	2772080	20.0