

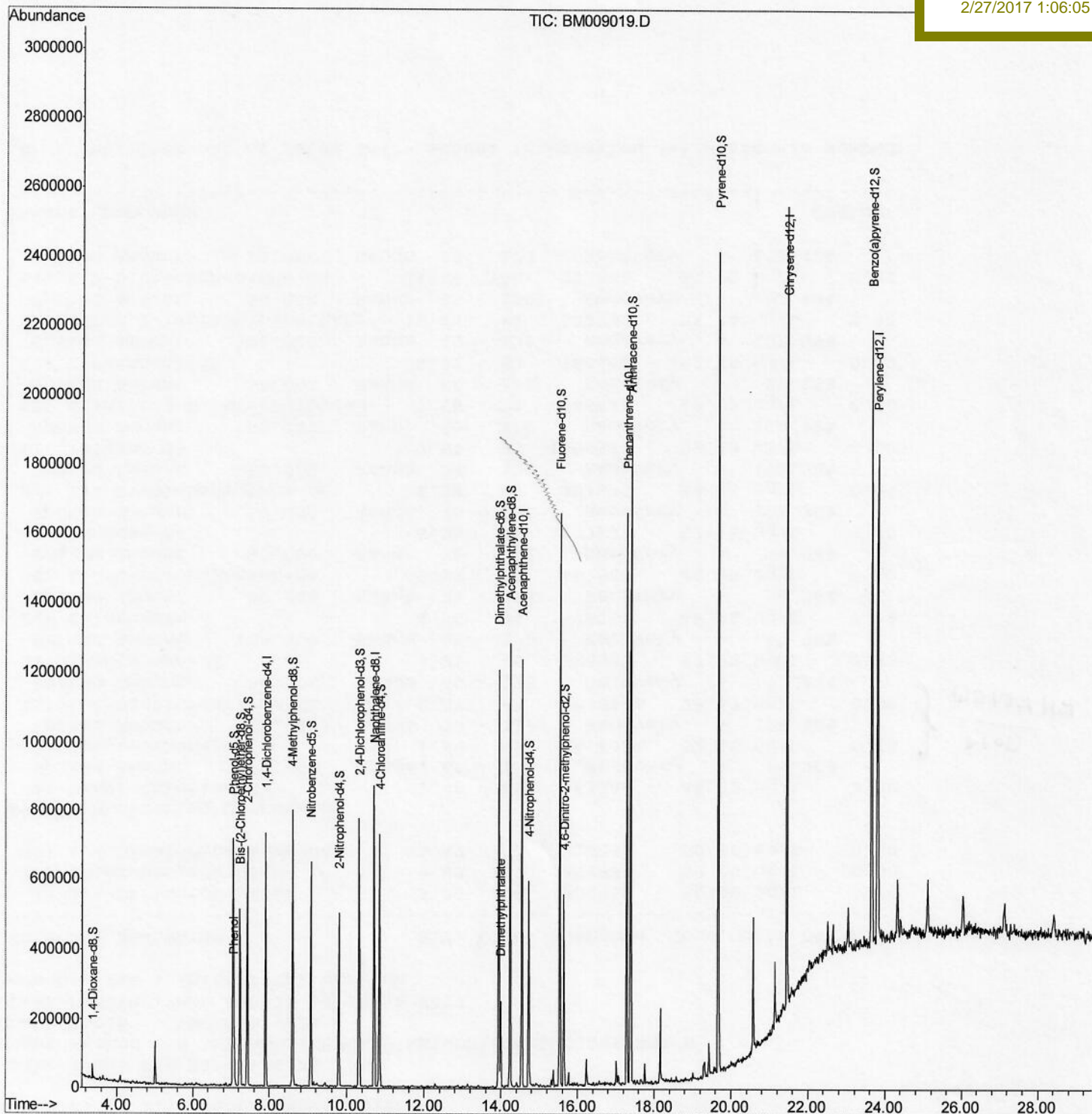
Data Path : Z:\HPCHEM1\BNA\_M\Data\BM022417\  
 Data File : BM009019.D  
 Acq On : 24 Feb 2017 15:54  
 Operator : SJ/MA  
 Sample : I1940-15  
 Misc :  
 ALS Vial : 11 Sample Multiplier: 1

Instrument :  
 BNA\_M  
 Client Sampled :  
 DABQ8

Quant Time: Feb 24 16:31:05 2017  
 Quant Method : Z:\HPCHEM1\BNA\_M\METHODS\SOM02.2-EPA-BM022317.M  
 Quant Title : SVOA CALIBRATION  
 QLast Update : Fri Feb 24 13:06:22 2017  
 Response via : Initial Calibration

Manual Integrations  
 APPROVED

mohammad  
 2/27/2017 1:06:05 PM



Quantitation Report (Qedit)

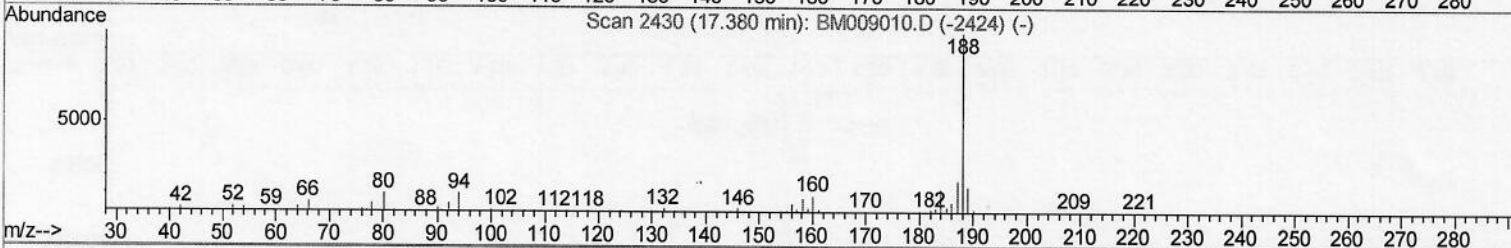
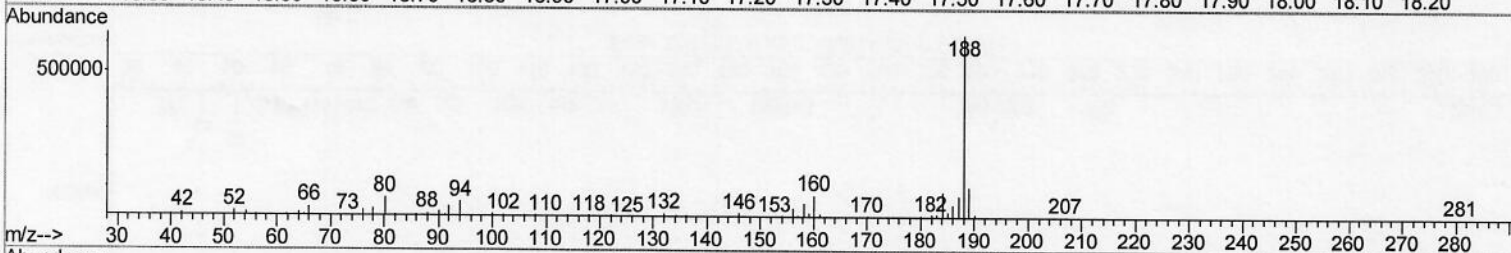
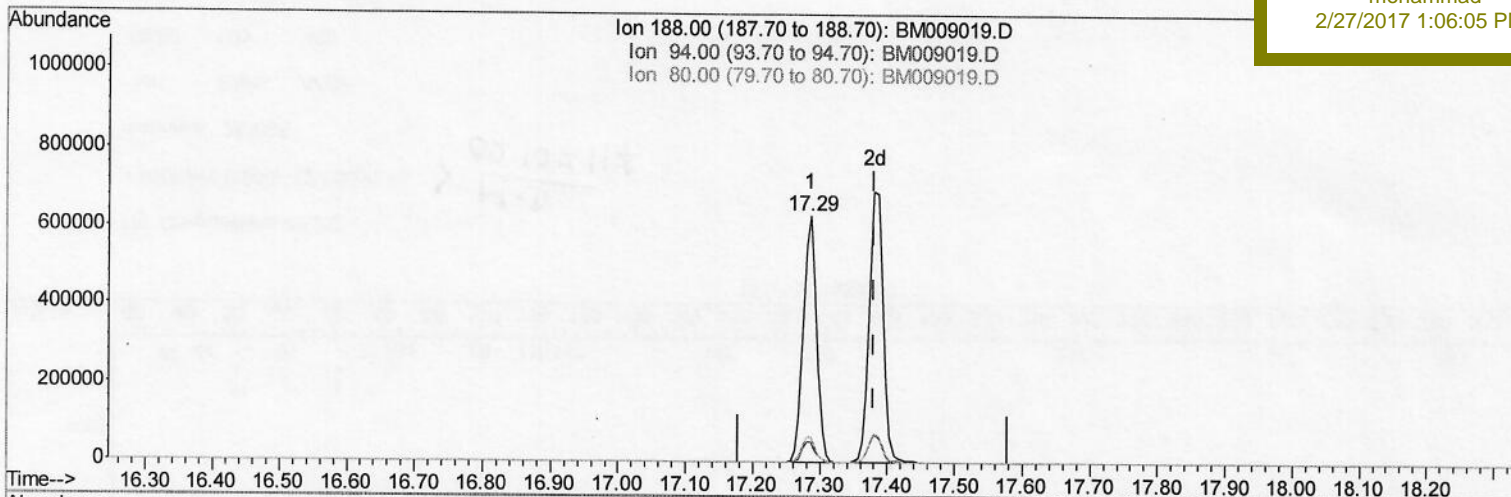
Data Path : Z:\HPCHEM1\BNA\_M\Data\BM022417\  
 Data File : BM009019.D  
 Acq On : 24 Feb 2017 15:54  
 Operator : SJ/MA  
 Sample : I1940-15  
 Misc :  
 ALS Vial : 11 Sample Multiplier: 1

Instrument :  
 BNA\_M  
 Client Sample Id :  
 DABQ8

Quant Time: Feb 24 16:29:07 2017  
 Quant Method : Z:\HPCHEM1\BNA\_M\METHODS\SOM02.2-EPA-BM022317.M  
 Quant Title : SVOA CALIBRATION  
 QLast Update : Fri Feb 24 13:06:22 2017  
 Response via : Initial Calibration

Manual Integrations  
 APPROVED

mohammad  
 2/27/2017 1:06:05 PM



TIC: BM009019.D

(70) Anthracene-d10 (S)  
 17.286min (-0.094) 21.12ng/ul  
 response 858765

Ion	Exp%	Act%
188.00	100	100
94.00	8.70	8.02
80.00	8.50	10.13
0.00	0.00	0.00



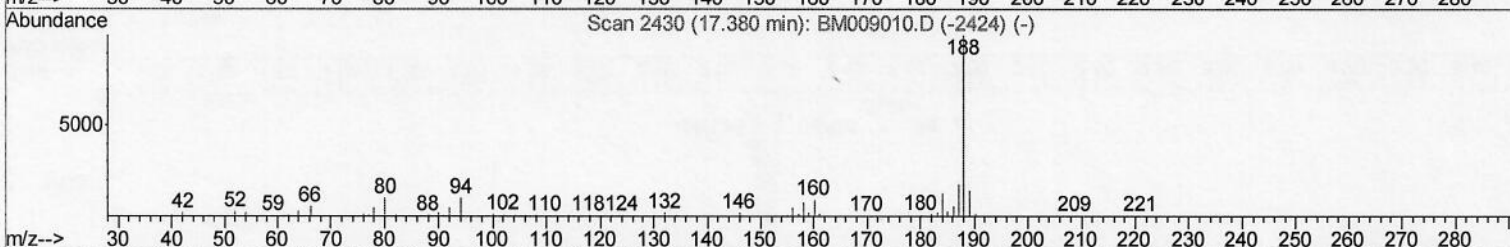
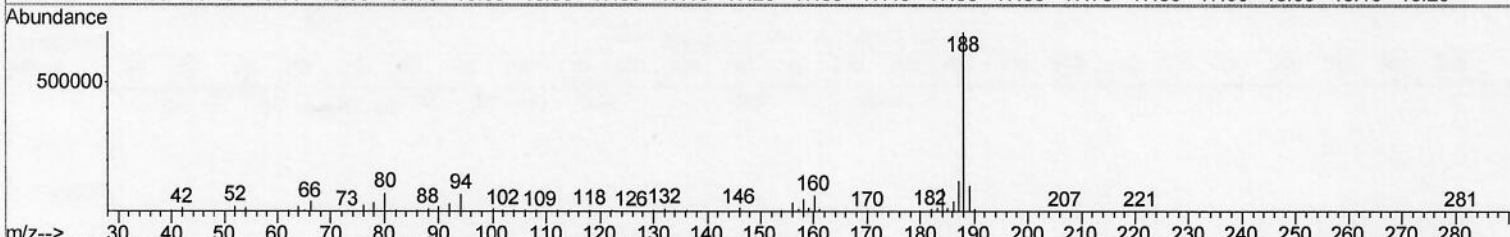
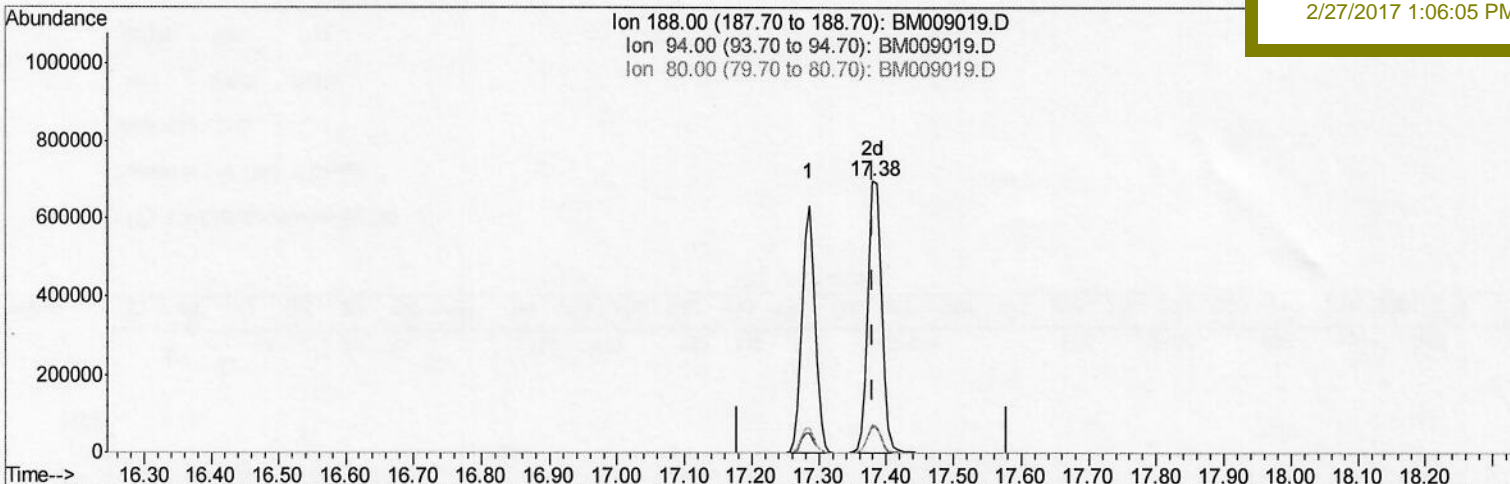
Quantitation Report (Qedit)

Data Path : Z:\HPCHEM1\BNA\_M\Data\BM022417\  
 Data File : BM009019.D  
 Acq On : 24 Feb 2017 15:54  
 Operator : SJ/MA  
 Sample : I1940-15  
 Misc :  
 ALS Vial : 11 Sample Multiplier: 1

Instrument :  
 BNA\_M  
 Client Sampled :  
 DABQ8

Quant Time: Feb 24 16:29:07 2017  
 Quant Method : Z:\HPCHEM1\BNA\_M\METHODS\SOM02.2-EPA-BM022317.M  
 Quant Title : SVOA CALIBRATION  
 QLast Update : Fri Feb 24 13:06:22 2017  
 Response via : Initial Calibration

Manual Integrations  
**APPROVED**  
 mohammad  
 2/27/2017 1:06:05 PM



TIC: BM009019.D

(70) Anthracene-d10 (S)

17.380min (-0.000) 24.48ng/ul m > SJ  
 response 995577 02/27/2017

Ion	Exp%	Act%
188.00	100	100
94.00	8.70	9.81
80.00	8.50	10.65#
0.00	0.00	0.00

Data Path : Z:\HPCHEM1\BNA\_M\Data\BM022417\  
 Data File : BM009019.D  
 Acq On : 24 Feb 2017 15:54  
 Operator : SJ/MA  
 Sample : I1940-15  
 Misc :  
 ALS Vial : 11 Sample Multiplier: 1

Instrument :  
 BNA\_M  
 Client Sampled :  
 DABQ8

Quant Time: Feb 24 16:31:05 2017  
 Quant Method : Z:\HPCHEM1\BNA\_M\METHODS\SOM02.2-EPA-BM022317.M  
 Quant Title : SVOA CALIBRATION  
 QLast Update : Fri Feb 24 13:06:22 2017  
 Response via : Initial Calibration

Manual Integrations  
 APPROVED

mohammad  
 2/27/2017 1:06:05 PM

Internal Standards	R.T.	QIon	Response	Conc	Units	Dev (Min)
1) 1,4-Dichlorobenzene-d4	7.90	152	156645	20.00	ng/ul	0.00
18) Naphthalene-d8	10.70	136	603732	20.00	ng/ul	0.00
35) Acenaphthene-d10	14.54	164	361587	20.00	ng/ul	0.00
61) Phenanthrene-d10	17.29	188	858765	20.00	ng/ul	0.00
75) Chrysene-d12	21.46	240	1088131	20.00	ng/ul	0.00
83) Perylene-d12	23.80	264	1050490	20.00	ng/ul	0.00

System Monitoring Compounds

3) 1,4-Dioxane-d8	3.36	96	16577	4.25	ng/uL	0.00
5) Phenol-d5	7.05	99	302246	21.29	ng/ul	0.00
7) Bis-(2-Chloroethyl) ether-d	7.23	67	238688	23.47	ng/ul	0.00
9) 2-Chlorophenol-d4	7.43	132	214588	22.68	ng/ul	0.00
13) 4-Methylphenol-d8	8.59	113	230581	22.12	ng/ul	0.00
19) Nitrobenzene-d5	9.07	128	95975	22.22	ng/ul	0.00
22) 2-Nitrophenol-d4	9.79	143	105119	22.55	ng/ul	0.00
26) 2,4-Dichlorophenol-d3	10.32	165	207696	21.22	ng/ul	0.00
29) 4-Chloroaniline-d4	10.84	131	272792	26.44	ng/ul	0.00
43) Dimethylphthalate-d6	13.94	166	671791	27.60	ng/ul	0.00
46) Acenaphthylene-d8	14.23	160	784350	26.23	ng/ul	0.00
51) 4-Nitrophenol-d4	14.72	143	89086	20.95	ng/ul	0.00
57) Fluorene-d10	15.53	176	614075	27.02	ng/ul	0.00
62) 4,6-Dinitro-2-methylphenol	15.64	200	86246	16.69	ng/ul	0.00
70) Anthracene-d10	17.38	188	995577m	24.48	ng/ul	0.00
76) Pyrene-d10	19.67	212	1182167	24.92	ng/ul	0.00
87) Benzo (a) pyrene-d12	23.65	264	1165185	24.43	ng/ul	0.00

SJ  
 02/27/2017

Target Compounds

Target Compounds	R.T.	QIon	Response	Conc	Units	Qvalue
6) Phenol	7.07	94	58121	3.88	ng/ul#	73
44) Dimethylphthalate	13.99	163	134571	5.52	ng/ul#	99

(#) = qualifier out of range (m) = manual integration (+) = signals summed