

Data Path : \\74.0.250.170\SVOASRV\HPCHEM1\BNA_M\DATA\BM022618\
 Data File : BM014356.D
 Acq On : 26 Feb 2018 14:59
 Operator : SJ/JU
 Sample : J1646-18
 Misc :
 ALS Vial : 8 Sample Multiplier: 1

Instrument :
 BNA_M
 ClientSampled :
 BE5Y2

Manual Integrations
 APPROVED

Sohil
 2/27/2018 4:57:46 PM

Quant Time: Feb 27 02:10:13 2018
 Quant Method : Z:\HPCHEM1\BNA_M\METHODS\SOM-EPA-BM021418.M
 Quant Title : SVOA CALIBRATION
 QLast Update : Tue Feb 27 01:33:52 2018
 Response via : Initial Calibration

Internal Standards	R.T.	QIon	Response	Conc	Units	Dev(Min)
1) 1,4-Dichlorobenzene-d4	7.52	152	122211	20.00	ng/ul	0.00
18) Naphthalene-d8	10.29	136	556535	20.00	ng/ul	0.00
35) Acenaphthene-d10	14.18	164	335301	20.00	ng/ul	0.00
61) Phenanthrene-d10	16.94	188	726133	20.00	ng/ul	0.00
75) Chrysene-d12	21.15	240	600006	20.00	ng/ul	0.00
83) Perylene-d12	23.31	264	490802	20.00	ng/ul	0.00

System Monitoring Compounds

3) 1,4-Dioxane-d8	3.10	96	11507	4.03	ng/uL	0.00
5) Phenol-d5	6.72	99	288707	27.95	ng/ul	0.00
7) Bis-(2-Chloroethyl)ether-d	6.87	67	177697	28.42	ng/ul	0.00
9) 2-Chlorophenol-d4	7.06	132	233998	29.54	ng/ul	0.00
13) 4-Methylphenol-d8	8.24	113	213975	23.68	ng/ul	0.00
19) Nitrobenzene-d5	8.68	128	119523	29.06	ng/ul	0.00
22) 2-Nitrophenol-d4	9.40	143	131257	30.83	ng/ul	0.00
26) 2,4-Dichlorophenol-d3	9.93	165	231536	26.26	ng/ul	0.00
29) 4-Chloroaniline-d4	10.46	131	133517	15.37	ng/ul	0.00
43) Dimethylphthalate-d6	13.60	166	820671	29.64	ng/ul	0.00
46) Acenaphthylene-d8	13.87	160	1029031	30.14	ng/ul	0.00
51) 4-Nitrophenol-d4	14.44	143	69332m	18.13	ng/ul	0.01
57) Fluorene-d10	15.18	176	696090	28.06	ng/ul	0.00
62) 4,6-Dinitro-2-methylphenol	15.34	200	97882	22.47	ng/ul	0.00
70) Anthracene-d10	17.04	188	1014979	28.97	ng/ul	0.00
76) Pyrene-d10	19.34	212	1052536	34.01	ng/ul	0.00
87) Benzo(a)pyrene-d12	23.18	264	692685	29.00	ng/ul	0.00

Target Compounds

					Qvalue
6) Phenol	6.75	94	33336	3.076	ng/ul# 92
44) Dimethylphthalate	13.65	163	177586	6.504	ng/ul 99
69) Phenanthrene	16.98	178	387313	9.258	ng/ul 98
71) Anthracene	17.07	178	67870	1.613	ng/ul 95
74) Fluoranthene	19.01	202	728551	14.576	ng/ul# 94
77) Pyrene	19.37	202	666249	16.709	ng/ul# 93
80) Benzo(a)anthracene	21.13	228	299256	7.992	ng/ul 97
81) Bis(2-ethylhexyl)phthalate	21.07	149	90805	3.846	ng/ul# 94
82) Chrysene	21.19	228	278691	7.978	ng/ul 97
85) Benzo(b)fluoranthene	22.67	252	323906	9.856	ng/ul# 95
86) Benzo(k)fluoranthene	22.71	252	105471	3.376	ng/ul# 94
88) Benzo(a)pyrene	23.23	252	227674	7.753	ng/ul# 98
89) Indeno(1,2,3-cd)pyrene	25.47	276	138518	4.861	ng/ul 94
90) Dibenzo(a,h)anthracene	25.48	278	38948m	1.645	ng/ul
91) Benzo(g,h,i)perylene	26.14	276	110018m	4.766	ng/ul

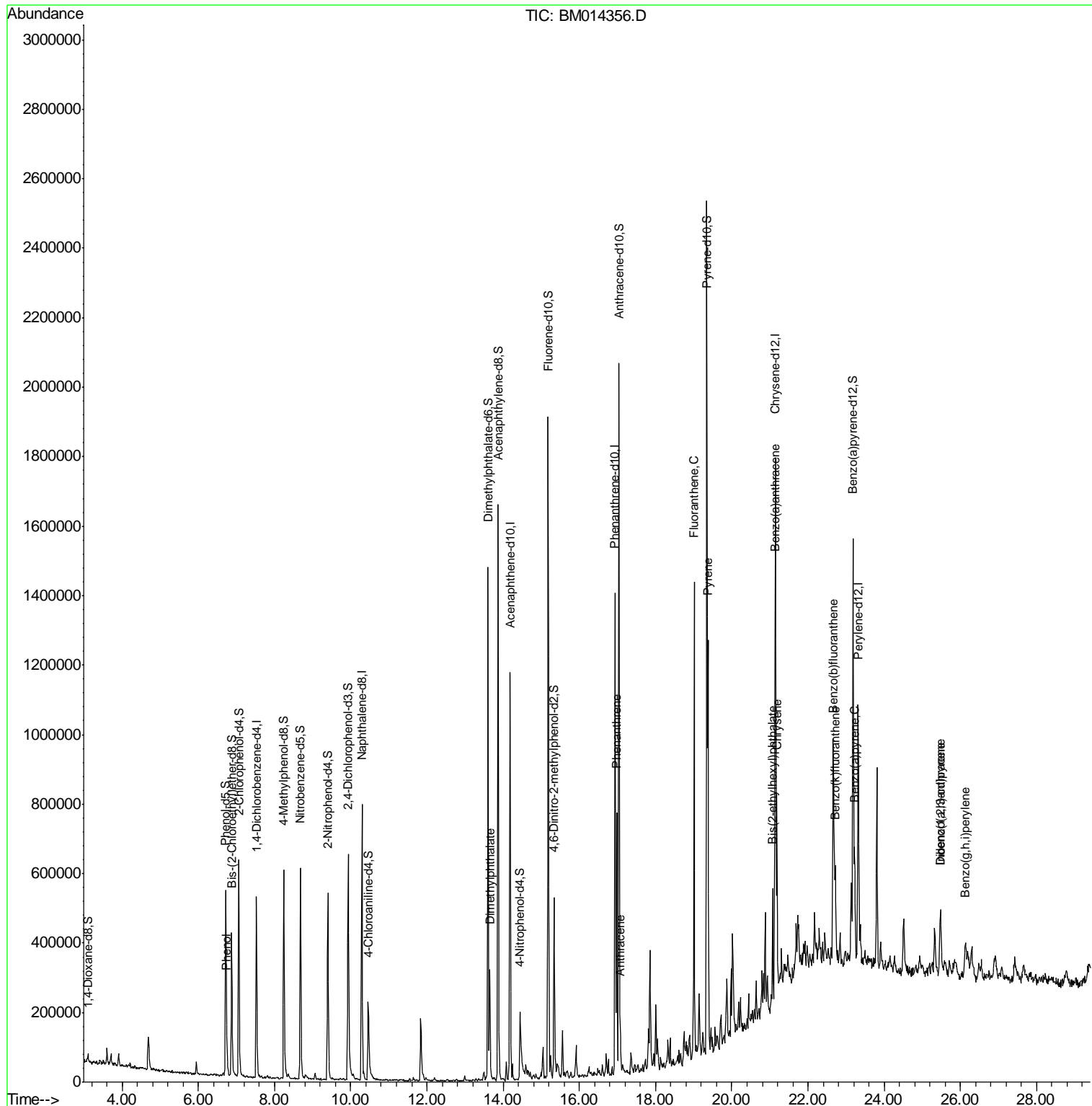
(#) = qualifier out of range (m) = manual integration (+) = signals summed

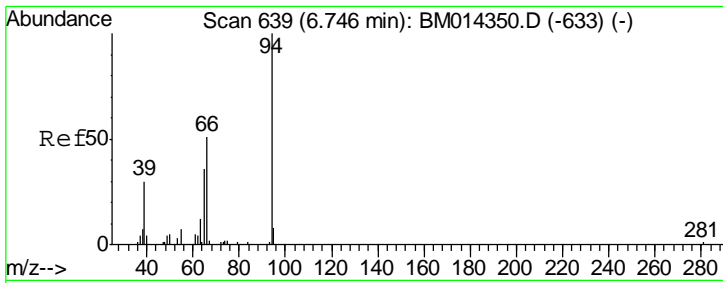
Data Path : \\74.0.250.170\SVOASRV\HPCHEM1\BNA_M\DATA\BM022618\
 Data File : BM014356.D
 Acq On : 26 Feb 2018 14:59
 Operator : SJ/JU
 Sample : J1646-18
 Misc :
 ALS Vial : 8 Sample Multiplier: 1

Instrument :
 BNA_M
 Client Sampled :
 BE5Y2

Manual Integrations
 APPROVED
 Sohil
 2/27/2018 4:57:46 PM

Quant Time: Feb 27 02:10:13 2018
 Quant Method : Z:\HPCHEM1\BNA_M\METHODS\SOM-EPA-BM021418.M
 Quant Title : SVOA CALIBRATION
 QLast Update : Tue Feb 27 01:33:52 2018
 Response via : Initial Calibration





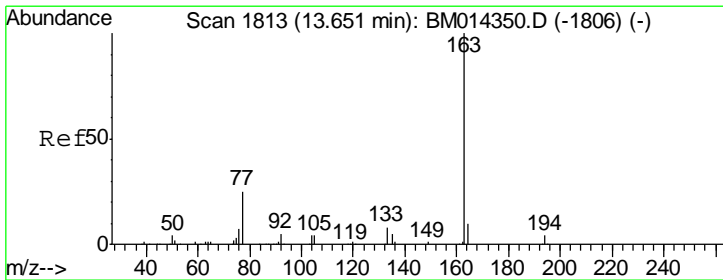
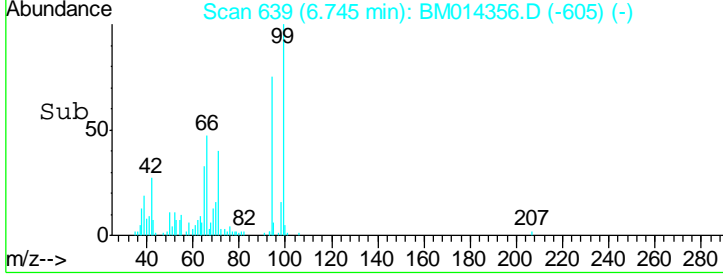
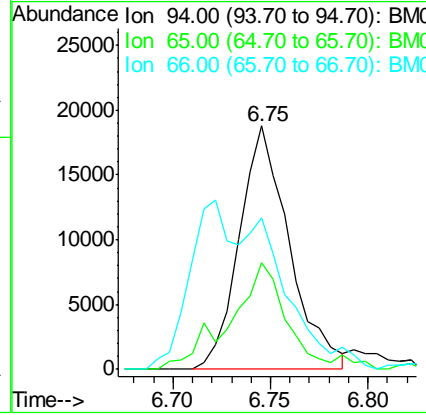
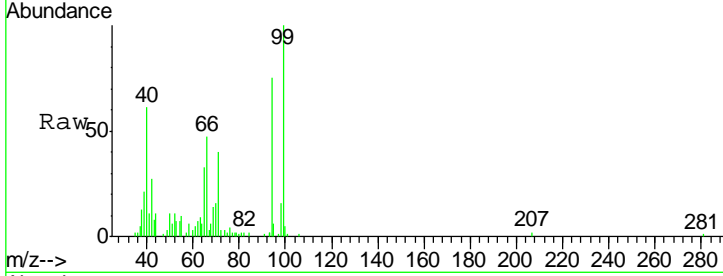
#6
 Phenol
 Concen: 3.076 ng/ul
 RT: 6.75 min Scan# 639
 Delta R.T. -0.00 min
 Lab File: BM014356.D
 Acq: 26 Feb 2018 14:59

Instrument :
 BNA_M
ClientSampled :
 BE5Y2

Tgt Ion	Resp	Lower	Upper
94	33336		
65	43.8	28.2	42.4#
66	62.3	47.2	70.8

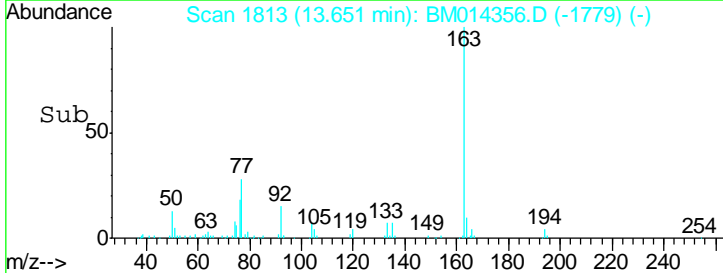
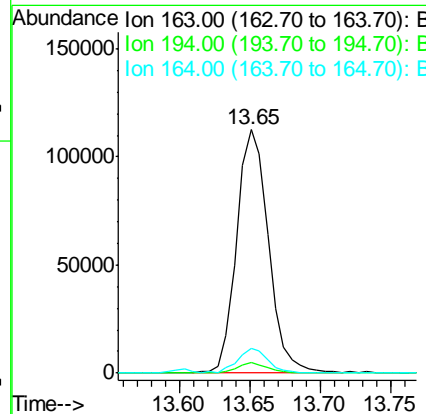
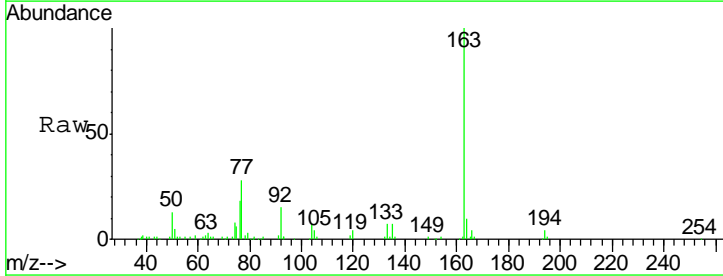
Manual Integrations
APPROVED

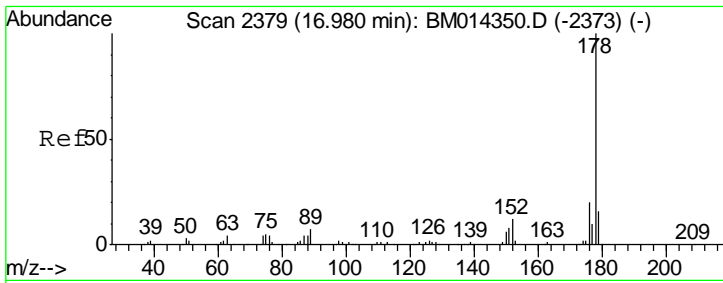
Sohil
 2/27/2018 4:57:46 PM



#44
 Dimethylphthalate
 Concen: 6.504 ng/ul
 RT: 13.65 min Scan# 1813
 Delta R.T. -0.00 min
 Lab File: BM014356.D
 Acq: 26 Feb 2018 14:59

Tgt Ion	Resp	Lower	Upper
163	177586		
194	4.3	3.5	5.3
164	10.1	8.2	12.4



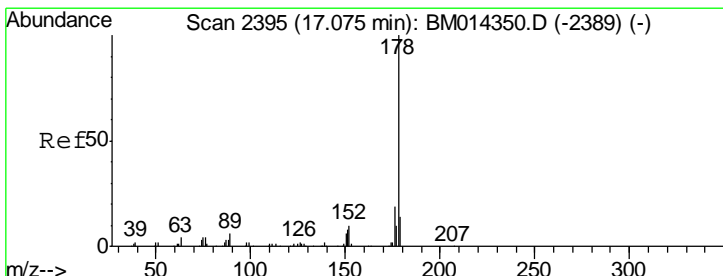
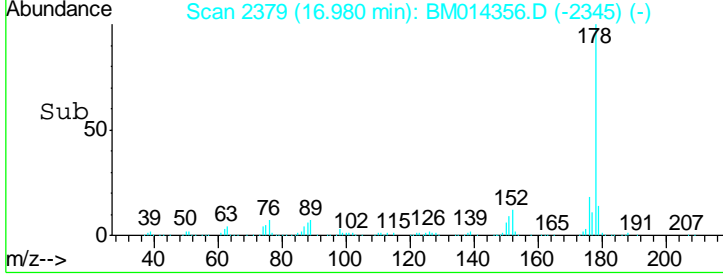
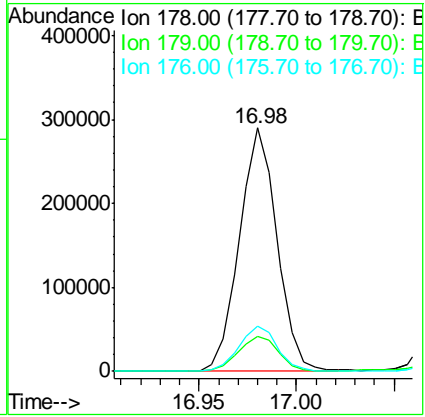
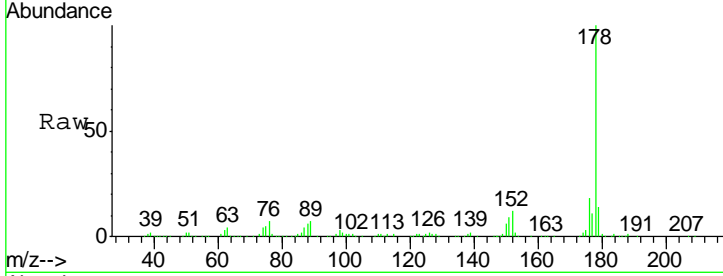


#69
 Phenanthrene
 Concen: 9.258 ng/ul
 RT: 16.98 min Scan# 2379
 Delta R.T. -0.00 min
 Lab File: BM014356.D
 Acq: 26 Feb 2018 14:59

Instrument :
 BNA_M
 ClientSampled :
 BE5Y2

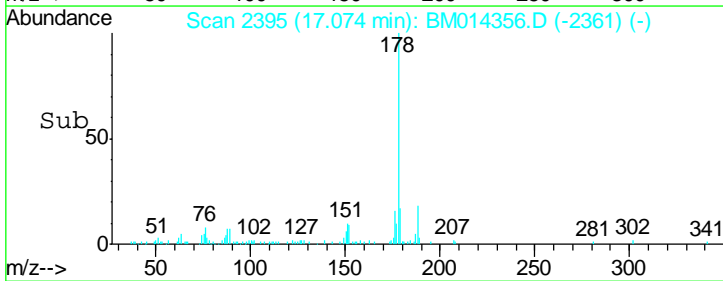
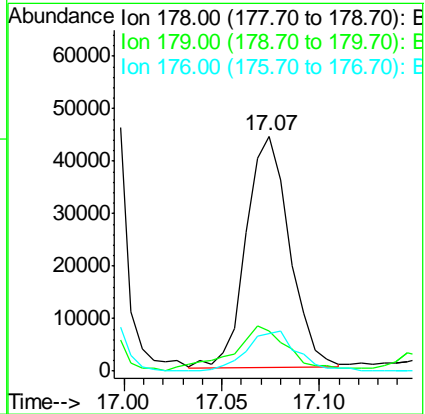
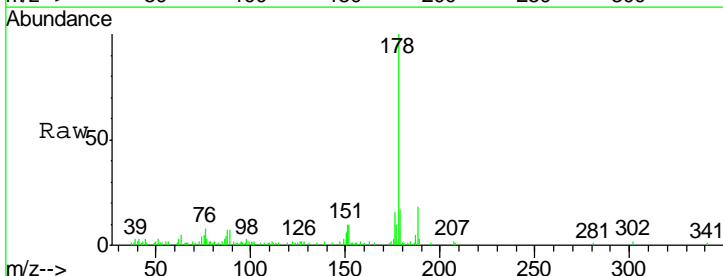
Tgt Ion	Resp	Lower	Upper
178	387313		
179	14.1	12.6	19.0
176	18.4	14.9	22.3

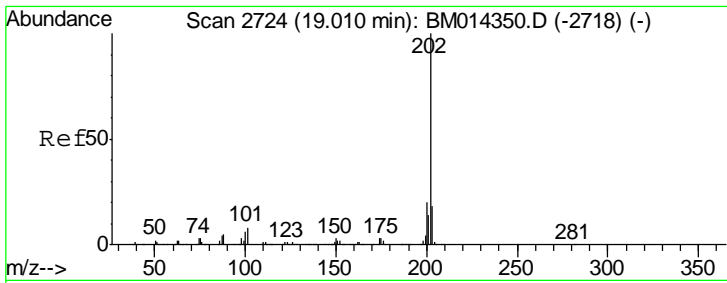
Manual Integrations
APPROVED
 Sohil
 2/27/2018 4:57:46 PM



#71
 Anthracene
 Concen: 1.613 ng/ul
 RT: 17.07 min Scan# 2395
 Delta R.T. -0.00 min
 Lab File: BM014356.D
 Acq: 26 Feb 2018 14:59

Tgt Ion	Resp	Lower	Upper
178	67870		
179	16.9	11.7	17.5
176	16.0	14.6	21.8





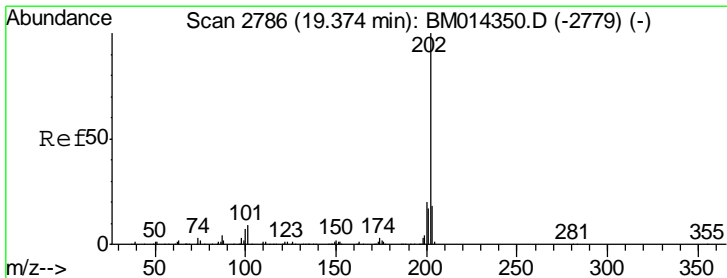
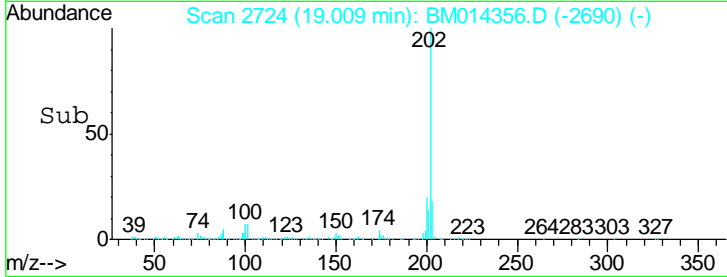
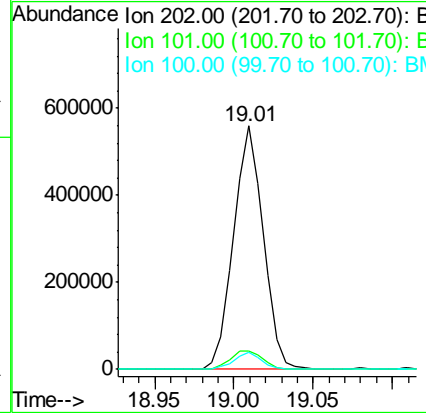
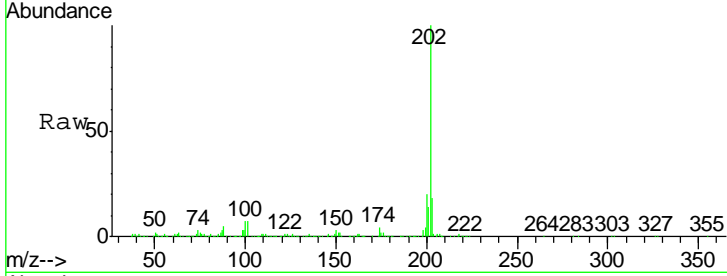
#74
 Fluoranthene
 Concen: 14.576 ng/ul
 RT: 19.01 min Scan# 2724
 Delta R.T. -0.00 min
 Lab File: BM014356.D
 Acq: 26 Feb 2018 14:59

Instrument :
 BNA_M
 ClientSampled :
 BE5Y2

Tgt Ion	Ratio	Lower	Upper
202	100		
101	7.3	4.6	7.0#
100	6.9	3.4	5.2#

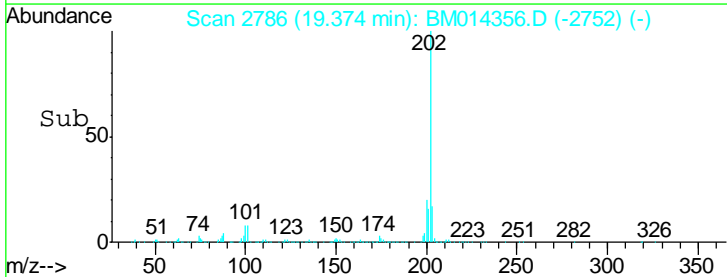
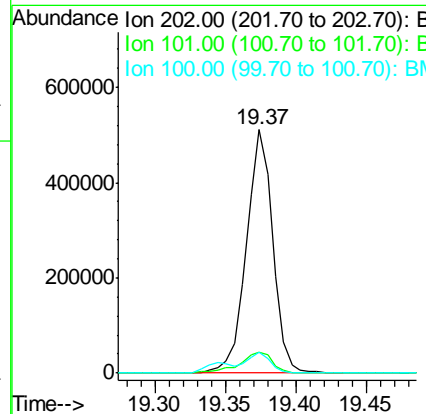
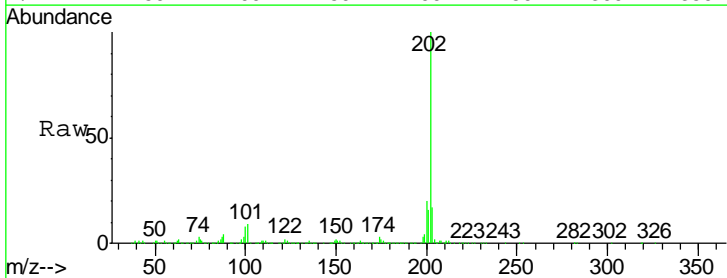
Manual Integrations
 APPROVED

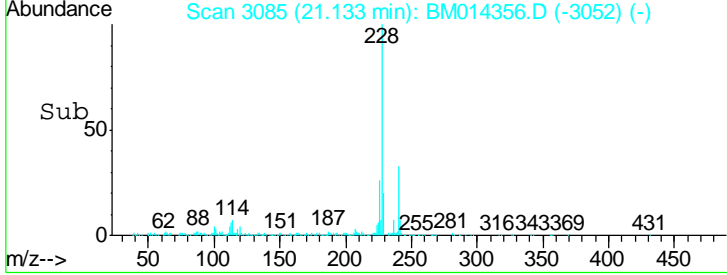
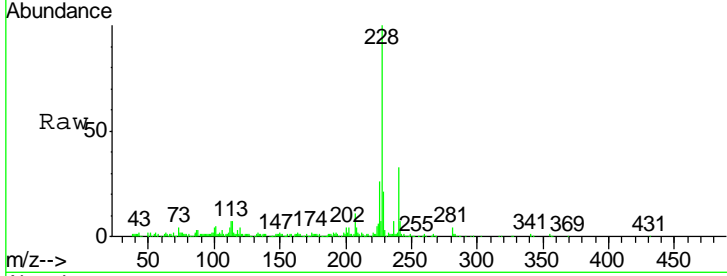
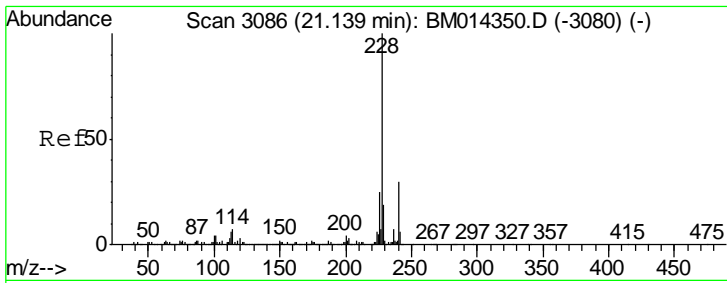
Sohil
 2/27/2018 4:57:46 PM



#77
 Pyrene
 Concen: 16.709 ng/ul
 RT: 19.37 min Scan# 2786
 Delta R.T. -0.00 min
 Lab File: BM014356.D
 Acq: 26 Feb 2018 14:59

Tgt Ion	Ratio	Lower	Upper
202	100		
101	8.6	5.1	7.7#
100	8.4	4.9	7.3#



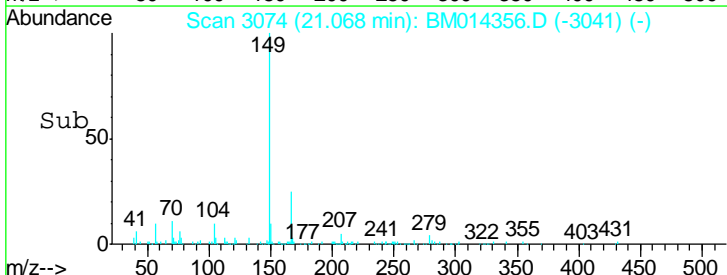
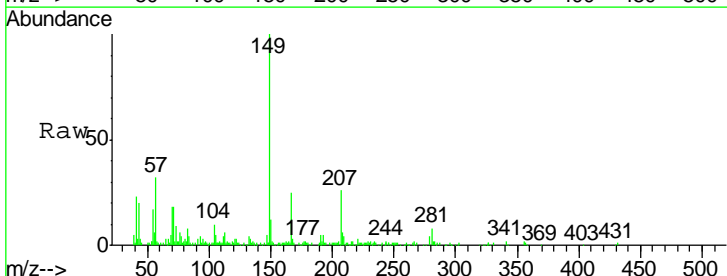
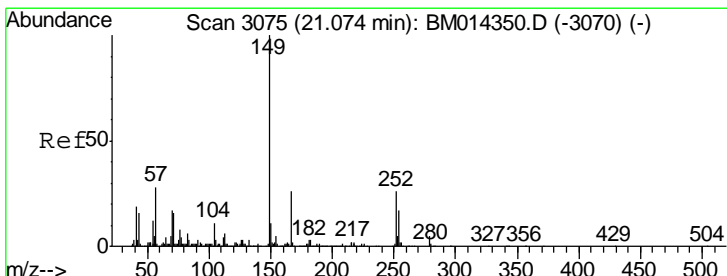
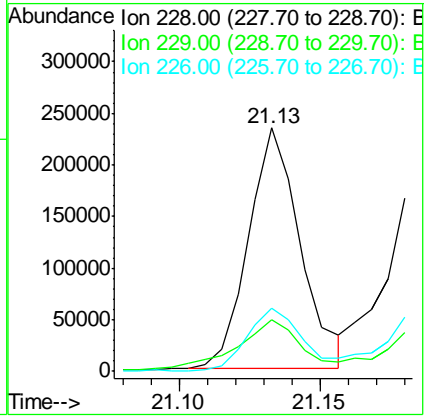


#80
 Benzo(a)anthracene
 Concen: 7.992 ng/ul
 RT: 21.13 min Scan# 3085
 Delta R.T. -0.01 min
 Lab File: BM014356.D
 Acq: 26 Feb 2018 14:59

Tgt Ion	Resp	Lower	Upper
228	100		
229	20.9	15.4	23.0
226	25.8	21.4	32.0

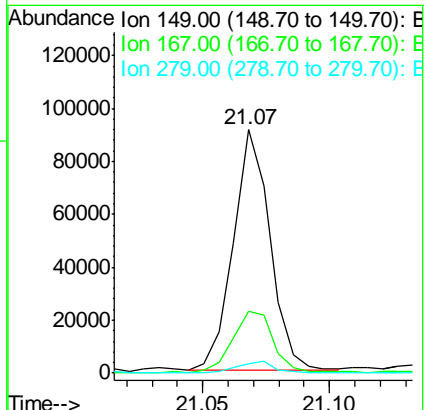
Instrument : BNA_M
 Client Sampled : BE5Y2

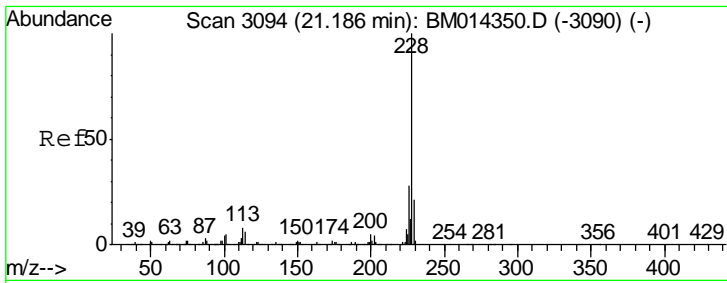
Manual Integrations APPROVED
 Sohil
 2/27/2018 4:57:46 PM



#81
 Bis(2-ethylhexyl)phthalate
 Concen: 3.846 ng/ul
 RT: 21.07 min Scan# 3074
 Delta R.T. -0.01 min
 Lab File: BM014356.D
 Acq: 26 Feb 2018 14:59

Tgt Ion	Resp	Lower	Upper
149	100		
167	25.3	22.8	34.2
279	3.8	4.9	7.3#





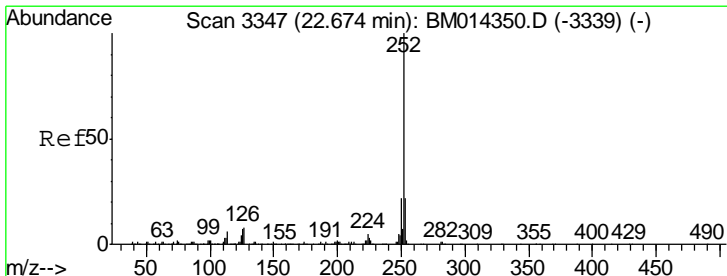
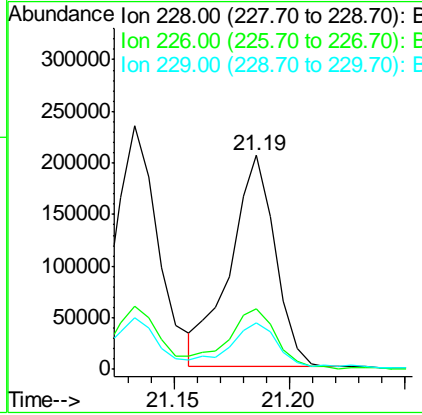
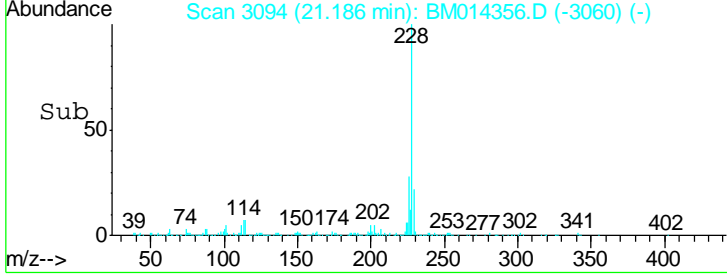
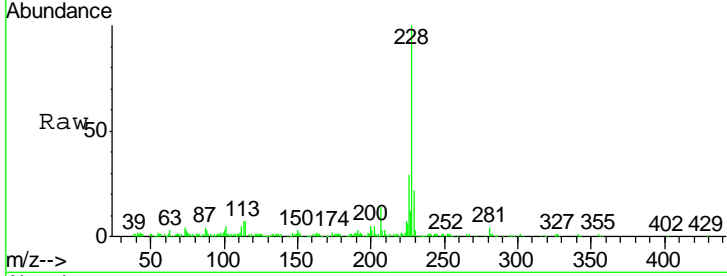
#82
 Chrysene
 Concen: 7.978 ng/ul
 RT: 21.19 min Scan# 3094
 Delta R.T. -0.00 min
 Lab File: BM014356.D
 Acq: 26 Feb 2018 14:59

Instrument :
 BNA_M
 ClientSampled :
 BE5Y2

Tgt Ion	Resp	Lower	Upper
228	100		
226	28.5	23.4	35.2
229	21.9	15.5	23.3

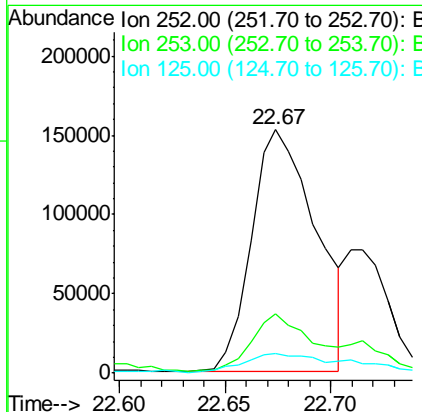
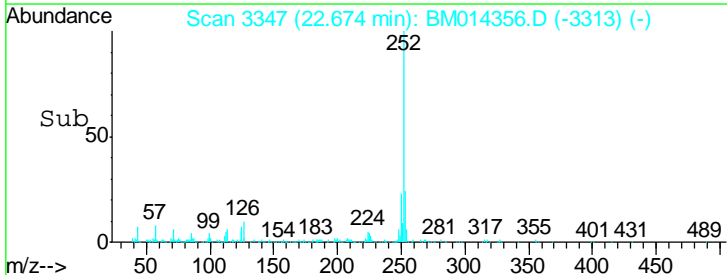
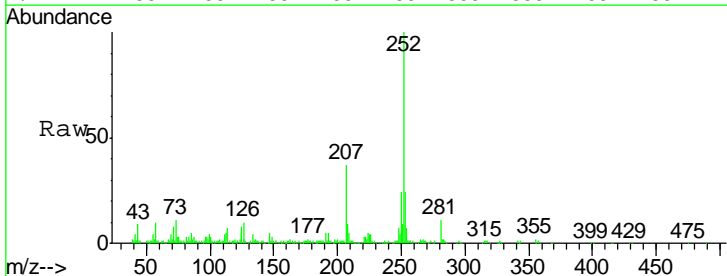
Manual Integrations
 APPROVED

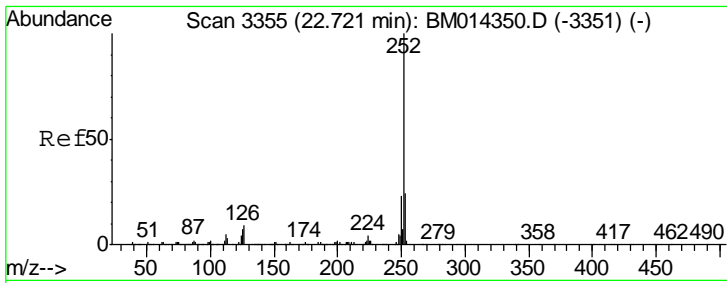
Sohil
 2/27/2018 4:57:46 PM



#85
 Benzo(b)fluoranthene
 Concen: 9.856 ng/ul
 RT: 22.67 min Scan# 3347
 Delta R.T. -0.00 min
 Lab File: BM014356.D
 Acq: 26 Feb 2018 14:59

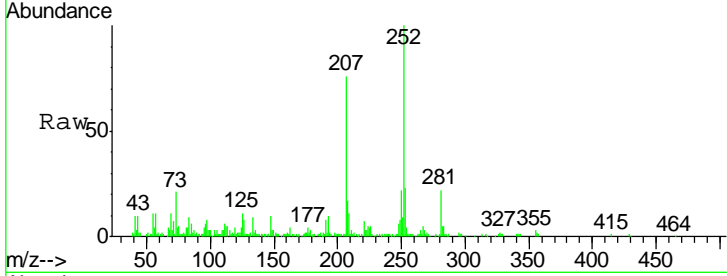
Tgt Ion	Resp	Lower	Upper
252	100		
253	24.4	17.9	26.9
125	8.0	3.6	5.4#





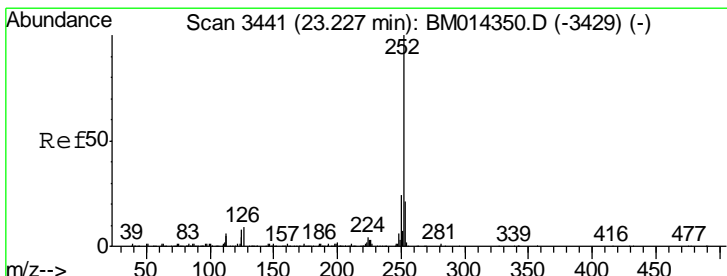
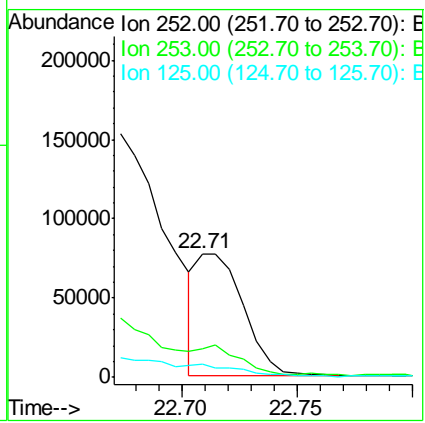
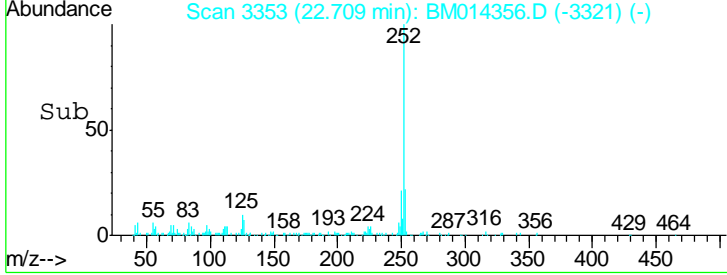
#86
 Benzo(k)fluoranthene
 Concen: 3.376 ng/ul
 RT: 22.71 min Scan# 3353
 Delta R.T. -0.01 min
 Lab File: BM014356.D
 Acq: 26 Feb 2018 14:59

Instrument :
 BNA_M
 ClientSampled :
 BE5Y2

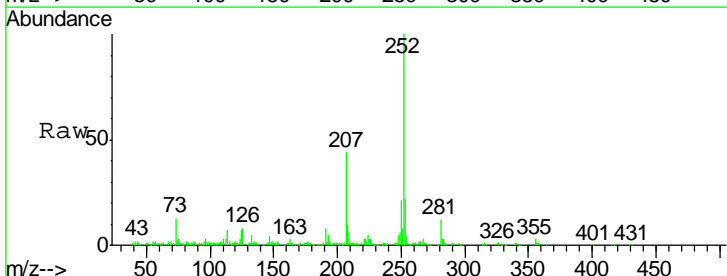


Tgt Ion	Resp	Lower	Upper
252	105471		
253	23.1	17.1	25.7
125	11.1	3.4	5.2#

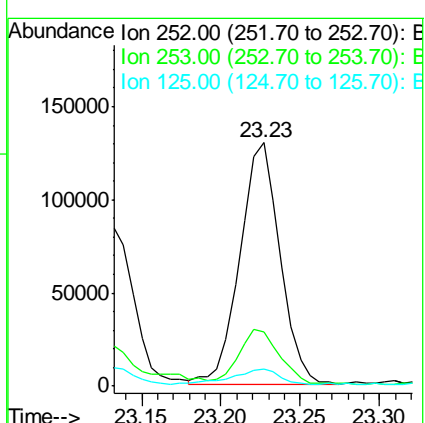
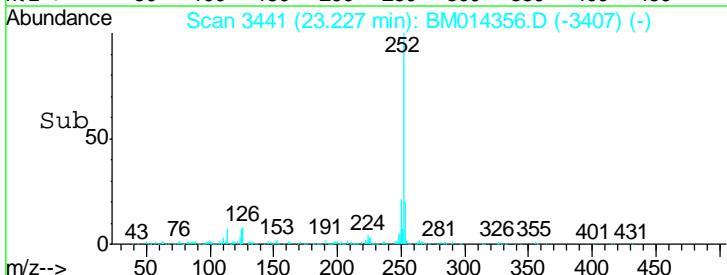
Manual Integrations
 APPROVED
 Sohil
 2/27/2018 4:57:46 PM

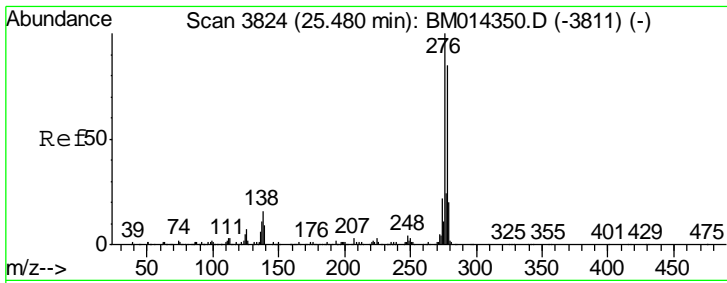


#88
 Benzo(a)pyrene
 Concen: 7.753 ng/ul
 RT: 23.23 min Scan# 3441
 Delta R.T. -0.00 min
 Lab File: BM014356.D
 Acq: 26 Feb 2018 14:59



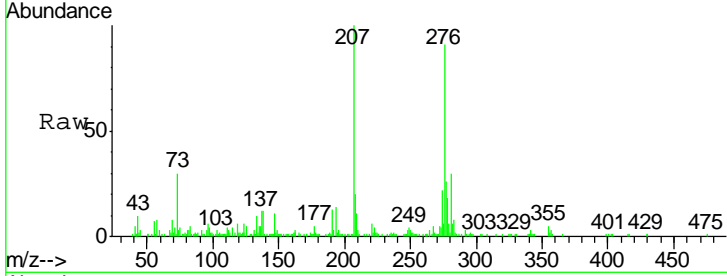
Tgt Ion	Resp	Lower	Upper
252	227674		
253	22.5	18.2	27.2
125	7.3	4.0	6.0#





#89
 Indeno(1,2,3-cd)pyrene
 Concen: 4.861 ng/ul
 RT: 25.47 min Scan# 3823
 Delta R.T. -0.01 min
 Lab File: BM014356.D
 Acq: 26 Feb 2018 14:59

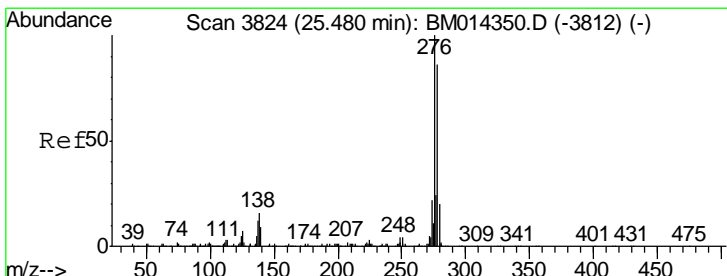
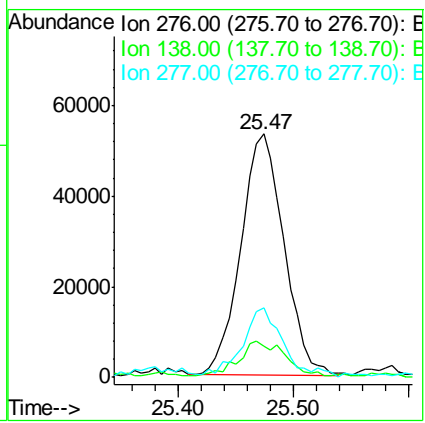
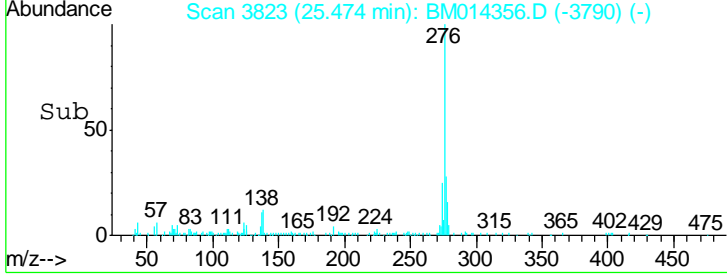
Instrument :
 BNA_M
ClientSampled :
 BE5Y2



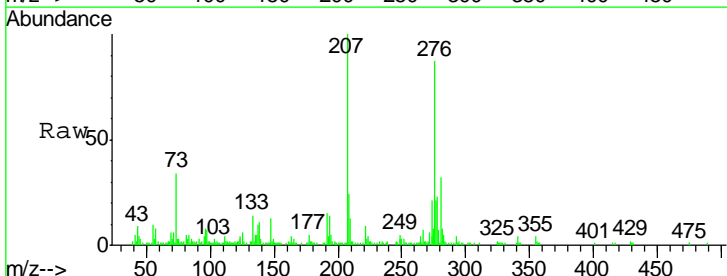
Tgt Ion: 276 Resp: 138518

Ion	Ratio	Lower	Upper
276	100		
138	12.8	9.3	13.9
277	28.5	19.9	29.9

Manual Integrations
APPROVED
 Sohil
 2/27/2018 4:57:46 PM

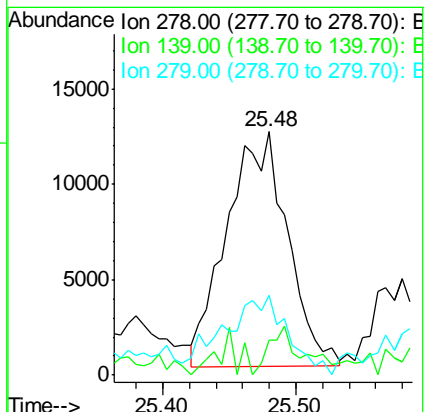
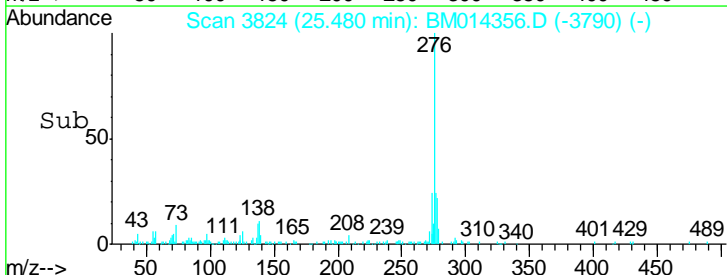


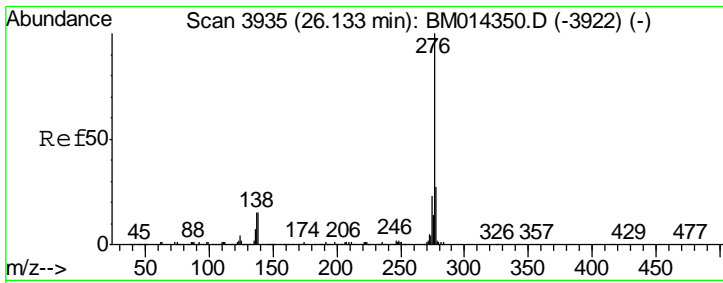
#90
 Dibenzo(a,h)anthracene
 Concen: 1.645 ng/ul m
 RT: 25.48 min Scan# 3824
 Delta R.T. -0.00 min
 Lab File: BM014356.D
 Acq: 26 Feb 2018 14:59



Tgt Ion: 278 Resp: 38948

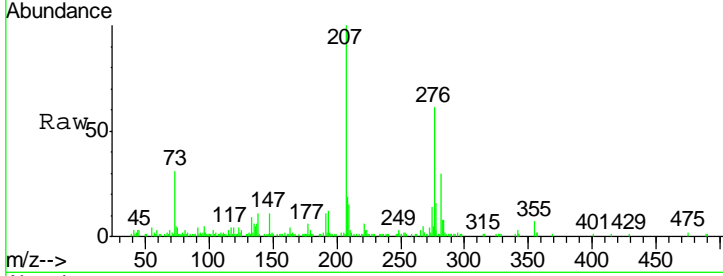
Ion	Ratio	Lower	Upper
278	100		
139	14.2	5.8	8.8#
279	32.6	18.6	27.8#





#91
 Benzo(g,h,i)perylene
 Concen: 4.766 ng/ul m
 RT: 26.14 min Scan# 3936
 Delta R.T. 0.01 min
 Lab File: BM014356.D
 Acq: 26 Feb 2018 14:59

Instrument :
 BNA_M
ClientSampled :
 BE5Y2



Tgt Ion	Resp	Lower	Upper
276	110018		
138	17.3	8.5	12.7#
277	26.0	18.6	28.0

Manual Integrations
APPROVED
 Sohil
 2/27/2018 4:57:46 PM

