

Data Path : \\74.0.250.170\SVOASRV\HPCHEM1\BNA\_M\DATA\BM022618\  
 Data File : BM014355.D  
 Acq On : 26 Feb 2018 14:23  
 Operator : SJ/JU  
 Sample : J1646-14  
 Misc :  
 ALS Vial : 7 Sample Multiplier: 1

Instrument :  
 BNA\_M  
 ClientSampleId :  
 BE5X8

Integration Parameters: LSCINT.P

Integrator: RTE  
 Smoothing : OFF Filtering: 5  
 Sampling : 1 Min Area: 1 % of largest Peak  
 Start Thrs: 0.2 Max Peaks: 100  
 Stop Thrs : 0 Peak Location: TOP

If leading or trailing edge < 100 prefer < Baseline drop else tangent >  
 Peak separation: 5

Method : Z:\HPCHEM1\BNA\_M\METHODS\SOM-EPA-BM021418.M  
 Title : SVOA CALIBRATION

Signal : TIC

peak #	R.T. min	first scan	max scan	last scan	PK TY	peak height	corr. area	corr. % max.	% of total
1	4.681	284	288	289	rBV	94758	101115	1.62%	0.109%
2	4.699	289	291	298	rVB	108981	163309	2.61%	0.177%
3	6.716	628	634	654	rVB	790589	1531429	24.51%	1.657%
4	6.875	655	661	672	rVB	619619	962940	15.41%	1.042%
5	7.063	686	693	704	rBV	896342	1443257	23.10%	1.562%
6	7.522	762	771	780	rBV	512039	856700	13.71%	0.927%
7	8.240	887	893	910	rBV	1011889	1799725	28.81%	1.947%
8	8.681	961	968	980	rBV	927758	1590883	25.47%	1.721%
9	9.399	1083	1090	1103	rBV	791643	1440995	23.07%	1.559%
10	9.928	1173	1180	1192	rBV	1033575	1981050	31.71%	2.144%
11	10.293	1234	1242	1247	rBV	762105	1279529	20.48%	1.385%
12	10.345	1247	1251	1257	rVB	63432	116969	1.87%	0.127%
13	10.451	1261	1269	1287	rBV	727160	1548606	24.79%	1.676%
14	11.975	1522	1528	1536	rBV2	70119	132974	2.13%	0.144%
15	12.192	1560	1565	1573	rVB2	80737	146329	2.34%	0.158%
16	13.498	1780	1787	1792	rBV2	90467	173766	2.78%	0.188%
17	13.551	1792	1796	1799	rVV2	59340	83025	1.33%	0.090%
18	13.604	1799	1805	1809	rVV	2281254	3089407	49.45%	3.343%
19	13.651	1809	1813	1819	rVB	546001	793981	12.71%	0.859%
20	13.869	1842	1850	1860	rBV	2586933	3765460	60.27%	4.074%
21	14.086	1881	1887	1891	rBV	85958	115716	1.85%	0.125%
22	14.181	1895	1903	1909	rVV2	1155047	1767247	28.29%	1.912%
23	14.245	1909	1914	1923	rVB	249800	372911	5.97%	0.404%
24	14.433	1936	1946	1961	rBV2	404619	1098881	17.59%	1.189%
25	14.586	1968	1972	1978	rVB2	160192	238587	3.82%	0.258%
26	14.810	2001	2010	2014	rBV5	44307	81209	1.30%	0.088%
27	14.980	2033	2039	2042	rBV5	32678	74227	1.19%	0.080%
28	15.045	2046	2050	2055	rVB	126125	163658	2.62%	0.177%
29	15.180	2067	2073	2079	rBV	2960275	4253582	68.09%	4.603%
30	15.239	2079	2083	2089	rVB	300125	455266	7.29%	0.493%
31	15.333	2094	2099	2108	rBV	852599	1430382	22.90%	1.548%
32	15.410	2108	2112	2115	rVV6	34676	65400	1.05%	0.071%
33	15.457	2115	2120	2124	rVB2	223723	296775	4.75%	0.321%
34	15.533	2129	2133	2141	rVB3	101256	235134	3.76%	0.254%

Data Path : \\74.0.250.170\SVOASRV\HPCHEM1\BNA\_M\DATA\BM022618\  
 Data File : BM014355.D  
 Acq On : 26 Feb 2018 14:23  
 Operator : SJ/JU  
 Sample : J1646-14  
 Misc :  
 ALS Vial : 7 Sample Multiplier: 1

Instrument :  
 BNA\_M  
 ClientSampleId :  
 BE5X8

## Integration Parameters: LSCINT.P

Integrator: RTE  
 Smoothing : OFF  
 Sampling : 1  
 Start Thrs: 0.2  
 Stop Thrs : 0

Filtering: 5  
 Min Area: 1 % of largest Peak  
 Max Peaks: 100  
 Peak Location: TOP

If leading or trailing edge < 100 prefer < Baseline drop else tangent >  
 Peak separation: 5

Method : Z:\HPCHEM1\BNA\_M\METHODS\SOM-EPA-BM021418.M  
 Title : SVOA CALIBRATION

35	15.680	2150	2158	2165	rVB2	89666	208735	3.34%	0.226%
36	15.910	2192	2197	2204	rBV4	200271	422798	6.77%	0.457%
37	15.963	2204	2206	2211	rVB3	72863	99335	1.59%	0.107%
38	16.245	2246	2254	2259	rBV5	78481	195227	3.12%	0.211%
39	16.298	2259	2263	2268	rVB4	52363	84601	1.35%	0.092%
40	16.480	2289	2294	2296	rVV3	48472	81065	1.30%	0.088%
41	16.516	2296	2300	2304	rVB4	57556	84100	1.35%	0.091%
42	16.604	2310	2315	2320	rVB2	122909	186690	2.99%	0.202%
43	16.674	2320	2327	2328	rVV3	63802	88305	1.41%	0.096%
44	16.704	2329	2332	2336	rVV3	92135	144090	2.31%	0.156%
45	16.757	2337	2341	2350	rVB	197458	309003	4.95%	0.334%
46	16.939	2365	2372	2375	rBV	1518177	2099928	33.61%	2.272%
47	16.980	2375	2379	2384	rVV	3456005	4721778	75.58%	5.109%
48	17.039	2384	2389	2393	rVV	3326627	4800558	76.84%	5.194%
49	17.069	2393	2394	2401	rVB	675038	732477	11.72%	0.793%
50	17.145	2401	2407	2410	rBV5	55419	101598	1.63%	0.110%
51	17.357	2435	2443	2453	rBV2	280996	582335	9.32%	0.630%
52	17.463	2454	2461	2468	rBV3	48543	92203	1.48%	0.100%
53	17.522	2468	2471	2473	rBV	51772	62647	1.00%	0.068%
54	17.663	2490	2495	2501	rVB5	43800	82421	1.32%	0.089%
55	17.816	2514	2521	2524	rBV	421022	603936	9.67%	0.653%
56	17.857	2524	2528	2537	rVV3	764064	1522929	24.38%	1.648%
57	17.945	2539	2543	2548	rVV	180663	278585	4.46%	0.301%
58	18.010	2548	2554	2558	rVV2	534741	1005341	16.09%	1.088%
59	18.045	2558	2560	2566	rVB	268919	335107	5.36%	0.363%
60	18.139	2571	2576	2579	rBV7	63637	100003	1.60%	0.108%
61	18.321	2603	2607	2612	rBV	253568	362309	5.80%	0.392%
62	18.380	2612	2617	2623	rVB	227547	341200	5.46%	0.369%
63	18.569	2646	2649	2654	rBV2	84925	115516	1.85%	0.125%
64	18.621	2655	2658	2662	rVV3	88382	117787	1.89%	0.127%
65	18.663	2662	2665	2669	rVB3	86361	107998	1.73%	0.117%
66	18.745	2674	2679	2683	rBV	228579	378073	6.05%	0.409%
67	18.804	2683	2689	2693	rVV5	133716	311149	4.98%	0.337%
68	18.839	2693	2695	2698	rVB	85227	80054	1.28%	0.087%
69	18.898	2699	2705	2710	rVB4	134049	265075	4.24%	0.287%
70	19.010	2717	2724	2730	rBV	4171772	5369456	85.95%	5.810%
71	19.116	2738	2742	2743	rBV2	86898	91850	1.47%	0.099%

Data Path : \\74.0.250.170\SVOASRV\HPCHEM1\BNA\_M\DATA\BM022618\  
 Data File : BM014355.D  
 Acq On : 26 Feb 2018 14:23  
 Operator : SJ/JU  
 Sample : J1646-14  
 Misc :  
 ALS Vial : 7 Sample Multiplier: 1

Instrument :  
 BNA\_M  
 ClientSampleId :  
 BE5X8

## Integration Parameters: LSCINT.P

Integrator: RTE  
 Smoothing : OFF  
 Sampling : 1  
 Start Thrs: 0.2  
 Stop Thrs : 0

Filtering: 5  
 Min Area: 1 % of largest Peak  
 Max Peaks: 100  
 Peak Location: TOP

If leading or trailing edge < 100 prefer < Baseline drop else tangent >  
 Peak separation: 5

Method : Z:\HPCHEM1\BNA\_M\METHODS\SOM-EPA-BM021418.M  
 Title : SVOA CALIBRATION

72	19.139	2744	2746	2753	rVB6	128934	174269	2.79%	0.189%
73	19.251	2758	2765	2770	rVV2	128015	255939	4.10%	0.277%
74	19.345	2776	2781	2784	rBV	4291129	6247304	100.00%	6.760%
75	19.374	2784	2786	2795	rVV	3357201	4141373	66.29%	4.481%
76	19.451	2795	2799	2806	rVB2	191645	315842	5.06%	0.342%
77	19.563	2814	2818	2823	rVB	171624	250804	4.01%	0.271%
78	19.627	2825	2829	2833	rVB2	124510	196557	3.15%	0.213%
79	19.710	2837	2843	2849	rVV5	182324	453866	7.26%	0.491%
80	19.845	2861	2866	2868	rBV5	161855	286845	4.59%	0.310%
81	19.880	2868	2872	2878	rVB	372948	615813	9.86%	0.666%
82	19.980	2885	2889	2893	rBV	257049	292942	4.69%	0.317%
83	20.033	2893	2898	2904	rBV3	262506	471303	7.54%	0.510%
84	20.174	2918	2922	2925	rBV	178553	221275	3.54%	0.239%
85	20.221	2927	2930	2936	rVB2	161760	241916	3.87%	0.262%
86	20.633	2997	3000	3008	rBV	218662	320730	5.13%	0.347%
87	20.792	3024	3027	3030	rBV2	230327	285941	4.58%	0.309%
88	20.833	3031	3034	3037	rVV	205944	255558	4.09%	0.277%
89	20.874	3037	3041	3048	rVV2	691538	1206020	19.30%	1.305%
90	20.933	3048	3051	3057	rVB	243835	311680	4.99%	0.337%
91	21.145	3079	3087	3091	rBV2	2133250	4335218	69.39%	4.691%
92	21.186	3091	3094	3103	rVB	1310729	1642268	26.29%	1.777%
93	21.304	3110	3114	3118	rBV	202873	246004	3.94%	0.266%
94	21.692	3177	3180	3184	rVB	225910	261032	4.18%	0.282%
95	22.680	3342	3348	3352	rBV	803539	1776123	28.43%	1.922%
96	23.133	3421	3425	3428	rBV	396863	606567	9.71%	0.656%
97	23.186	3428	3434	3438	rVV	1893574	3403322	54.48%	3.683%
98	23.227	3438	3441	3448	rVB	732073	1165062	18.65%	1.261%
99	23.321	3451	3457	3461	rBV	757651	1328451	21.26%	1.437%
100	25.474	3818	3823	3833	rVB3	335720	890803	14.26%	0.964%

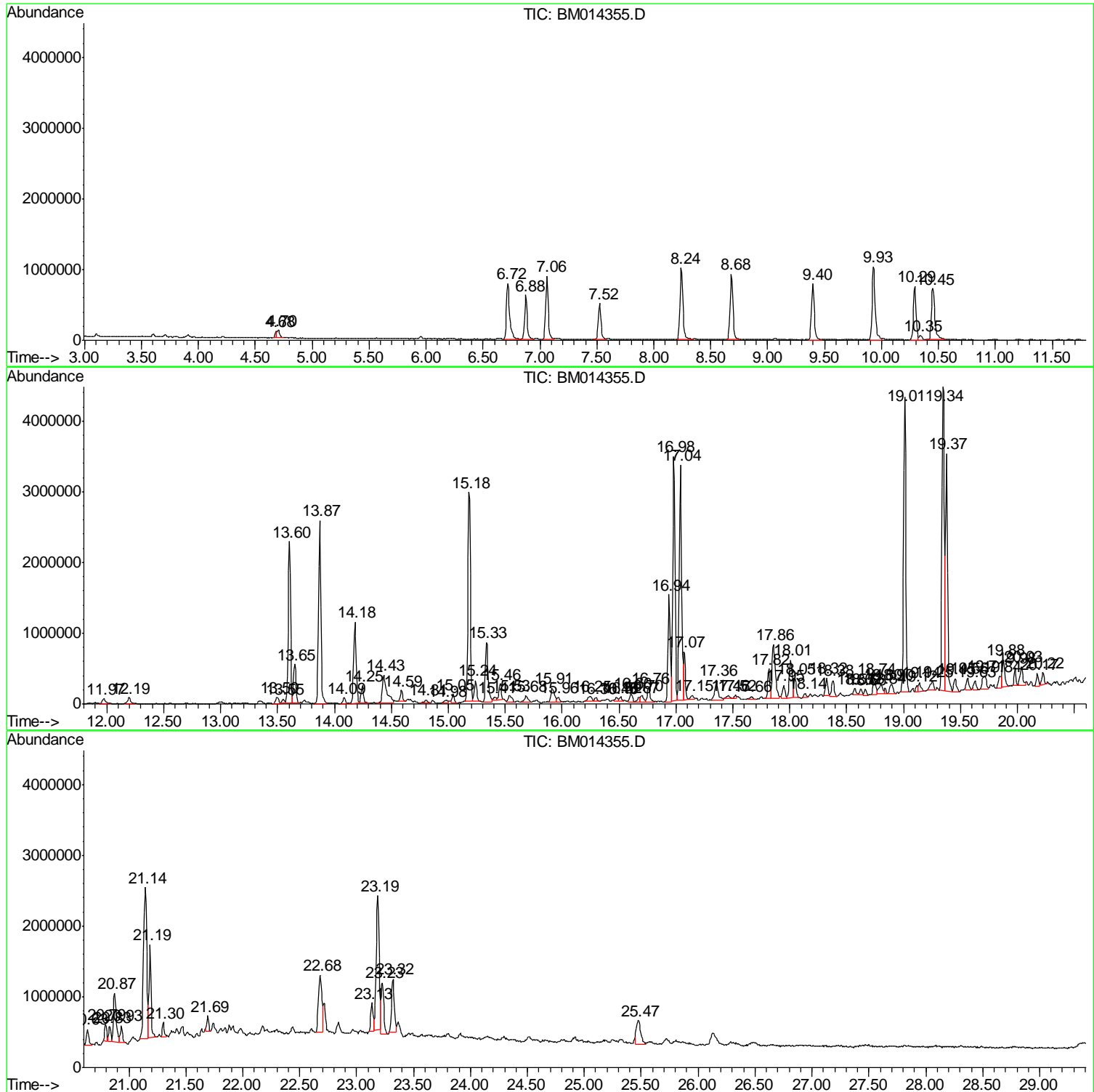
Sum of corrected areas: 92417513

Data Path : \\74.0.250.170\SVOASRV\HPCHEM1\BNA\_M\DATA\BM022618\  
 Data File : BM014355.D  
 Acq On : 26 Feb 2018 14:23  
 Operator : SJ/JU  
 Sample : J1646-14  
 Misc :  
 ALS Vial : 7 Sample Multiplier: 1

Instrument :  
 BNA\_M  
 ClientSampleId :  
 BE5X8

Quant Method : Z:\HPCHEM1\BNA\_M\METHODS\SOM-EPA-BM021418.M  
 Quant Title : SVOA CALIBRATION

TIC Library : C:\DATABASE\NIST11.L  
 TIC Integration Parameters: LSCINT.P



Data Path : \\74.0.250.170\SVOASRV\HPCHEM1\BNA\_M\DATA\BM022618\  
 Data File : BM014355.D  
 Acq On : 26 Feb 2018 14:23  
 Operator : SJ/JU  
 Sample : J1646-14  
 Misc :  
 ALS Vial : 7 Sample Multiplier: 1

Instrument :  
 BNA\_M  
 ClientSampleID :  
 BE5X8

Quant Method : Z:\HPCHEM1\BNA\_M\METHODS\SOM-EPA-BM021418.M  
 Quant Title : SVOA CALIBRATION

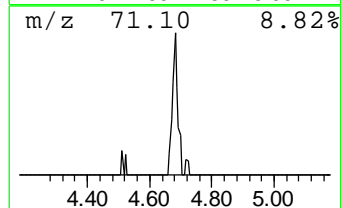
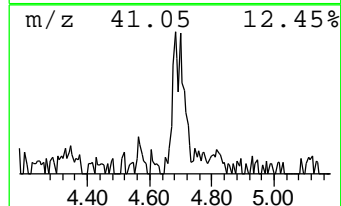
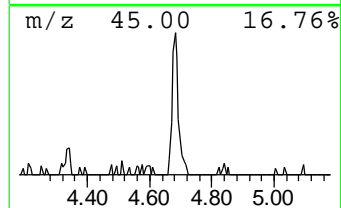
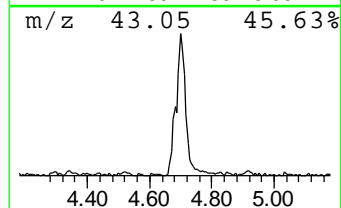
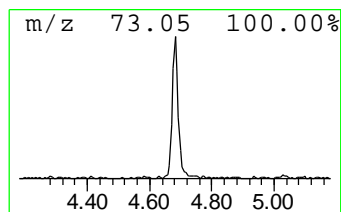
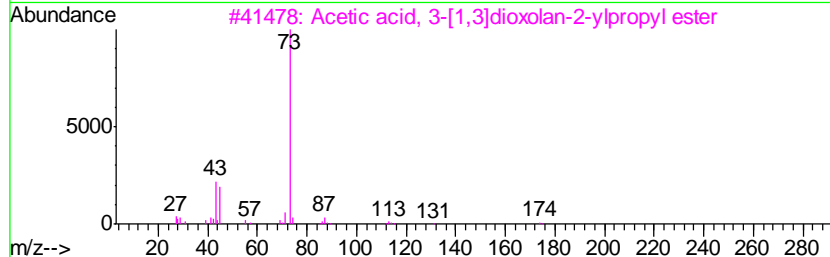
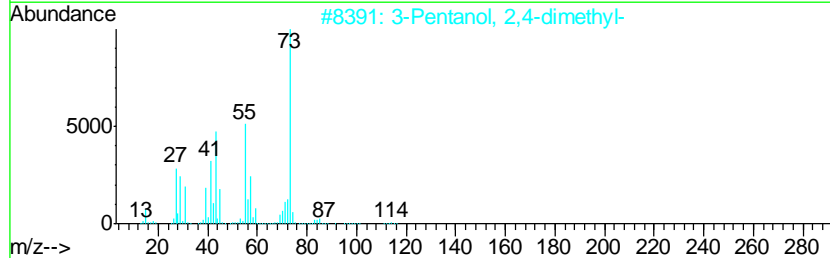
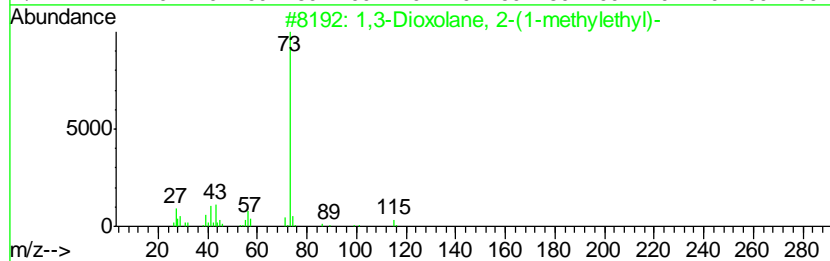
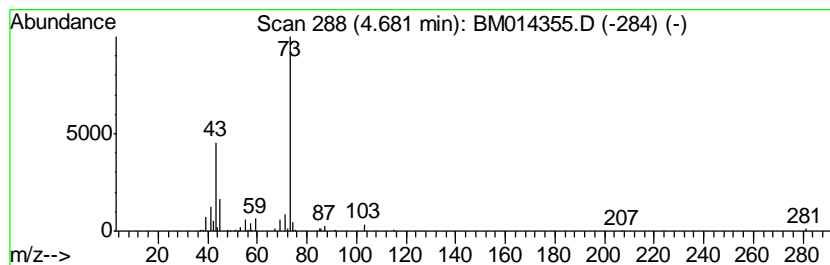
TIC Library : C:\DATABASE\NIST11.L  
 TIC Integration Parameters: LSCINT.P

\*\*\*\*\*  
 Peak Number 1 unknown-01 Concentration Rank 18

R.T.	EstConc	Area	Relative to ISTD	R.T.
4.68	2.36 ng/ul	101115	1,4-Dichlorobenzene-d4	7.52

Hit#	of	Tentative ID	MW	MolForm	CAS#	Qual
1	5	1,3-Dioxolane, 2-(1-methylethyl)-	116	C6H12O2	000822-83-3	37
2		3-Pentanol, 2,4-dimethyl-	116	C7H16O	000600-36-2	36
3		Acetic acid, 3-[1,3]dioxolan-2-ylpropyl ester	174	C8H14O4	1000186-02-3	36
4		2-Methylbutane-1,4-diol, 3-(1-ethyl-)	192	C9H20O4	088481-54-3	33
5		Pentanol, 5-amino-	103	C5H13NO	002508-29-4	9



Data Path : \\74.0.250.170\SVOASRV\HPCHEM1\BNA\_M\DATA\BM022618\  
 Data File : BM014355.D  
 Acq On : 26 Feb 2018 14:23  
 Operator : SJ/JU  
 Sample : J1646-14  
 Misc :  
 ALS Vial : 7 Sample Multiplier: 1

Instrument :  
 BNA\_M  
 ClientSampled :  
 BE5X8

Quant Method : Z:\HPCHEM1\BNA\_M\METHODS\SOM-EPA-BM021418.M  
 Quant Title : SVOA CALIBRATION

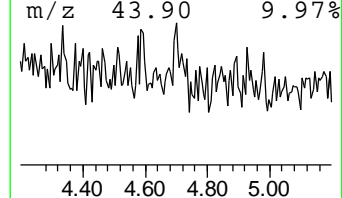
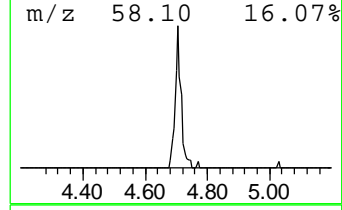
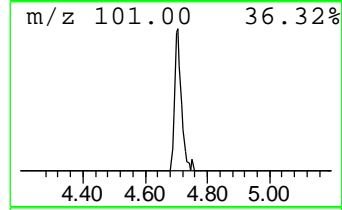
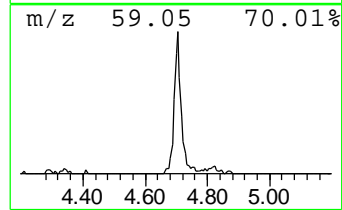
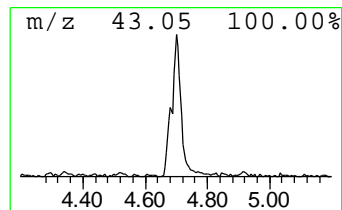
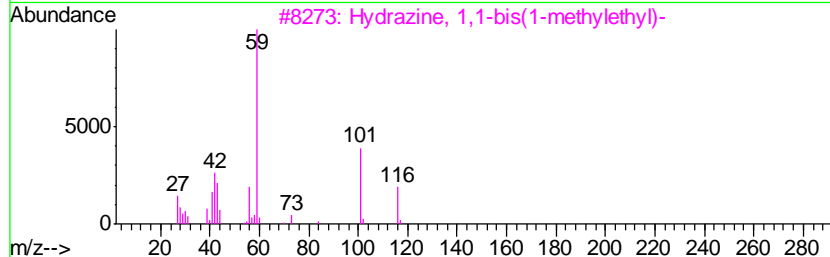
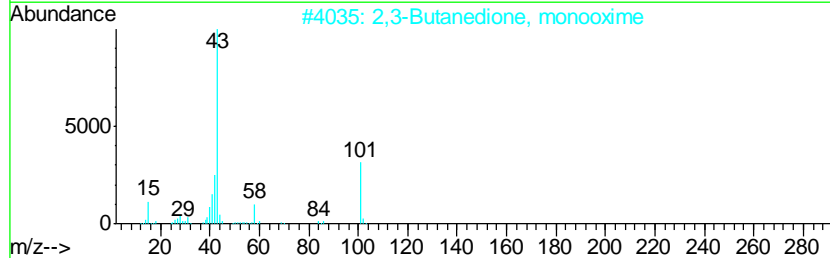
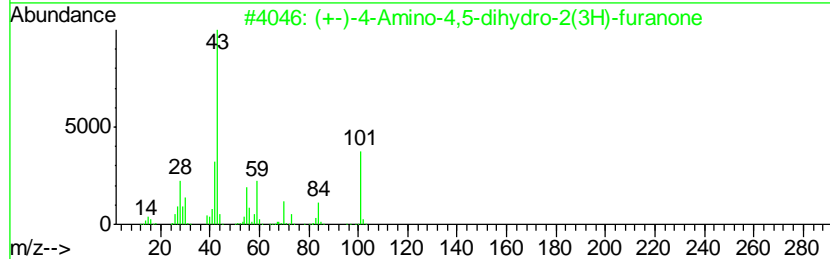
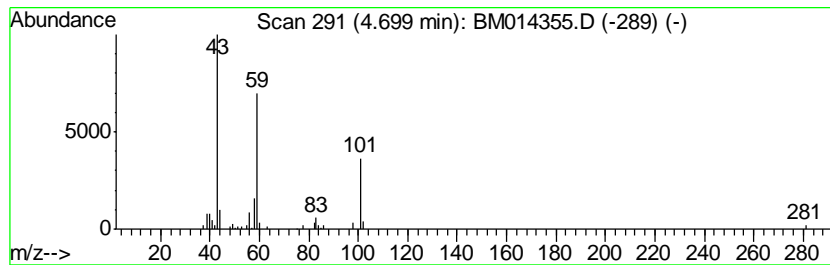
TIC Library : C:\DATABASE\NIST11.L  
 TIC Integration Parameters: LSCINT.P

\*\*\*\*\*  
 Peak Number 2 unknown-02 Concentration Rank 7

R.T.	EstConc	Area	Relative to ISTD	R.T.
4.70	3.81 ng/ul	163309	1,4-Dichlorobenzene-d4	7.52

Hit#	of	Tentative ID	MW	MolForm	CAS#	Qual
1	(+-)-4-Amino-4,5-dihydro-2(3H)-f...	101	C4H7NO2	016504-58-8	47	
2	2,3-Butanedione, monooxime	101	C4H7NO2	000057-71-6	43	
3	Hydrazine, 1,1-bis(1-methylethyl)-	116	C6H16N2	000921-14-2	33	
4	Morpholine, 4-methyl-	101	C5H11NO	000109-02-4	25	
5	Succinic acid, heptyl 2-methoxye...	274	C14H26O5	1000325-80-7	25	



Data Path : \\74.0.250.170\SVOASRV\HPCHEM1\BNA\_M\DATA\BM022618\  
 Data File : BM014355.D  
 Acq On : 26 Feb 2018 14:23  
 Operator : SJ/JU  
 Sample : J1646-14  
 Misc :  
 ALS Vial : 7 Sample Multiplier: 1

Instrument :  
 BNA\_M  
 ClientSampled :  
 BE5X8

Quant Method : Z:\HPCHEM1\BNA\_M\METHODS\SOM-EPA-BM021418.M  
 Quant Title : SVOA CALIBRATION

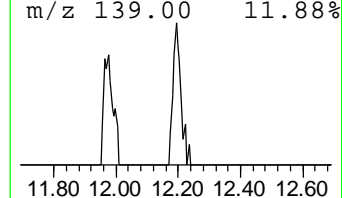
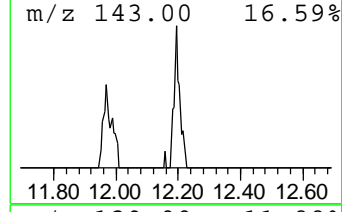
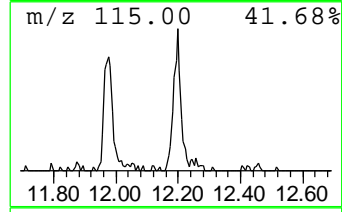
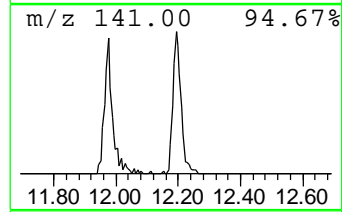
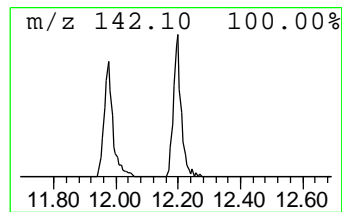
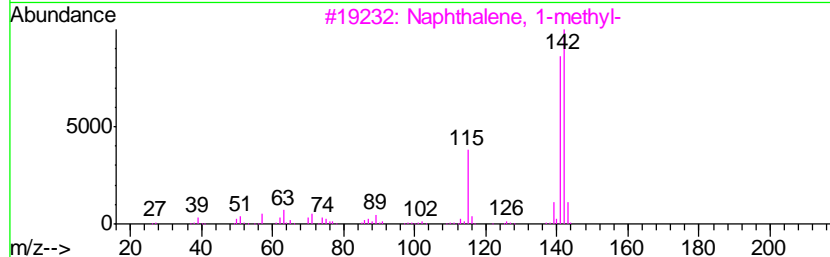
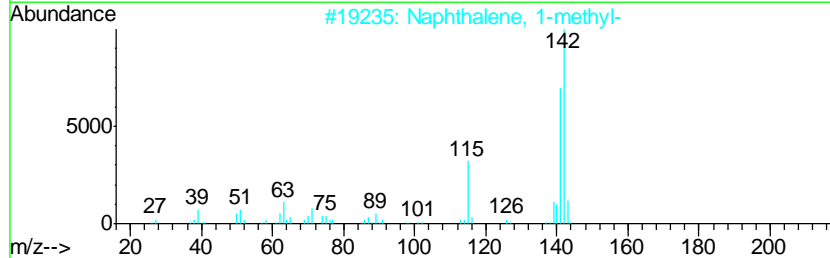
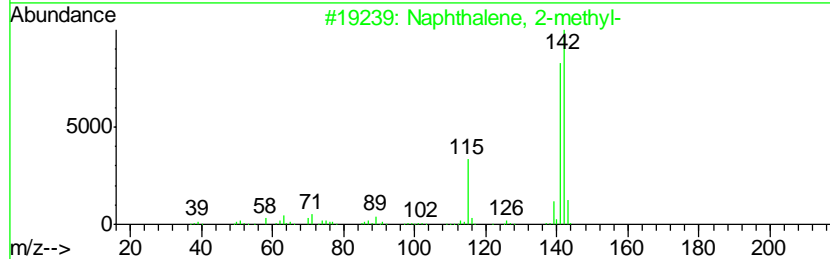
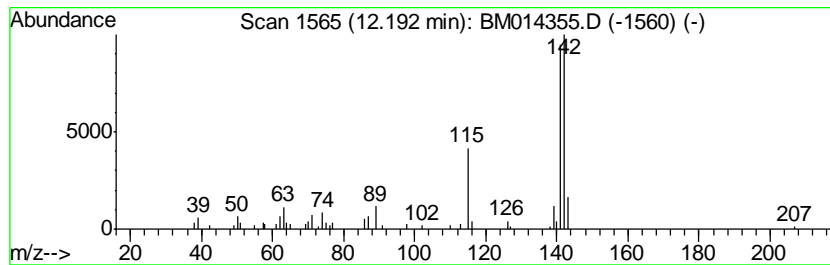
TIC Library : C:\DATABASE\NIST11.L  
 TIC Integration Parameters: LSCINT.P

\*\*\*\*\*  
 Peak Number 3 Naphthalene, 1-methyl- Concentration Rank 19

R.T.	EstConc	Area	Relative to ISTD	R.T.
12.19	2.29 ng/ul	146329	Naphthalene-d8	10.29

Hit#	of	Tentative ID	MW	MolForm	CAS#	Qual
1	5	Naphthalene, 2-methyl-	142	C11H10	000091-57-6	91
2		Naphthalene, 1-methyl-	142	C11H10	000090-12-0	91
3		Naphthalene, 1-methyl-	142	C11H10	000090-12-0	91
4		Naphthalene, 2-methyl-	142	C11H10	000091-57-6	91
5		Benzocycloheptatriene	142	C11H10	000264-09-5	91



Data Path : \\74.0.250.170\SVOASRV\HPCHEM1\BNA\_M\DATA\BM022618\  
 Data File : BM014355.D  
 Acq On : 26 Feb 2018 14:23  
 Operator : SJ/JU  
 Sample : J1646-14  
 Misc :  
 ALS Vial : 7 Sample Multiplier: 1

Instrument :  
 BNA\_M  
 ClientSampleID :  
 BE5X8

Quant Method : Z:\HPCHEM1\BNA\_M\METHODS\SOM-EPA-BM021418.M  
 Quant Title : SVOA CALIBRATION

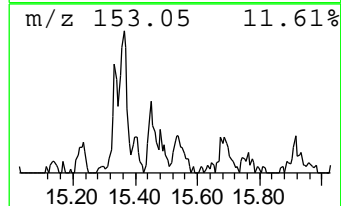
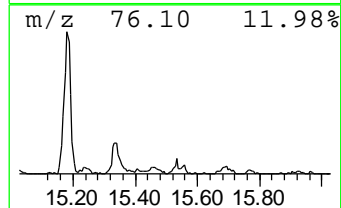
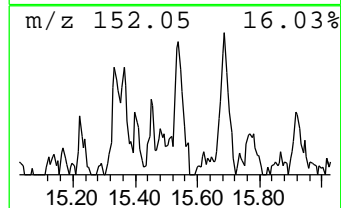
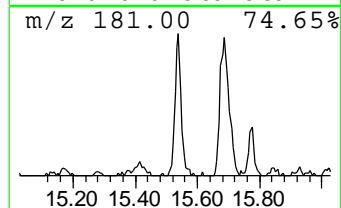
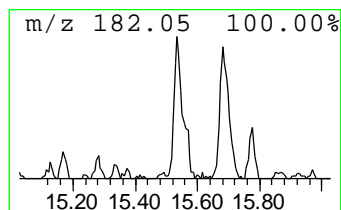
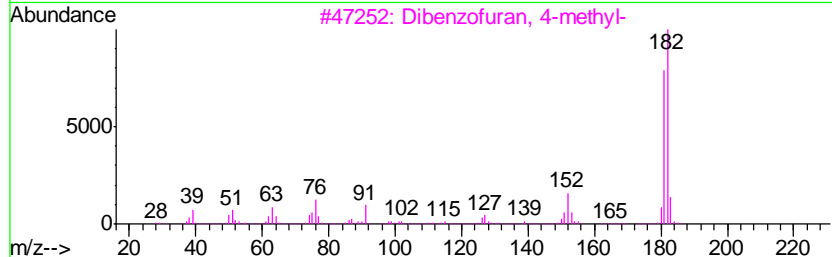
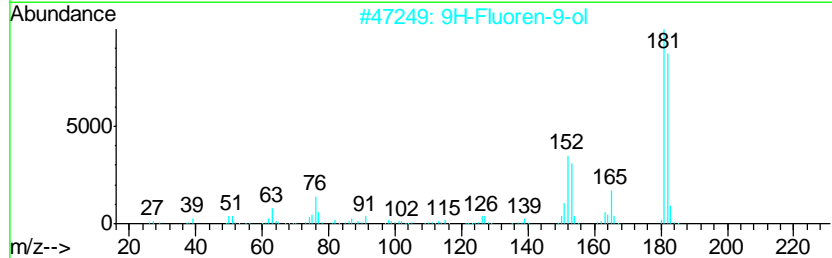
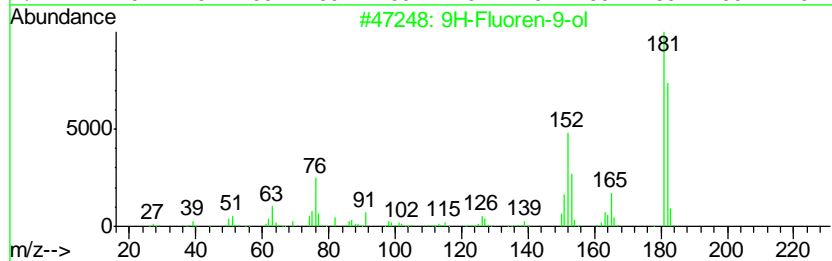
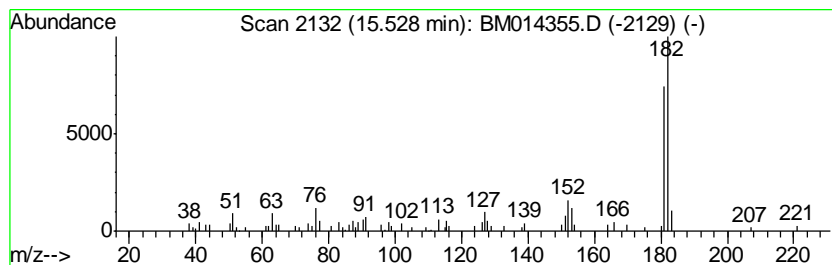
TIC Library : C:\DATABASE\NIST11.L  
 TIC Integration Parameters: LSCINT.P

\*\*\*\*\*  
 Peak Number 4 9H-Fluoren-9-ol Concentration Rank 15

R.T.	EstConc	Area	Relative to ISTD	R.T.
15.53	2.66 ng/ul	235134	Acenaphthene-d10	14.18

Hit#	of	Tentative ID	MW	MolForm	CAS#	Qual
1	5	9H-Fluoren-9-ol	182	C13H10O	001689-64-1	91
2		9H-Fluoren-9-ol	182	C13H10O	001689-64-1	86
3		Dibenzofuran, 4-methyl-	182	C13H10O	007320-53-8	83
4		2,4,6-Cycloheptatrien-1-one, 2-p...	182	C13H10O	014562-09-5	72
5		[1,1'-Biphenyl]-4-carboxaldehyde	182	C13H10O	003218-36-8	64





Data Path : \\74.0.250.170\SVOASRV\HPCHEM1\BNA\_M\DATA\BM022618\  
 Data File : BM014355.D  
 Acq On : 26 Feb 2018 14:23  
 Operator : SJ/JU  
 Sample : J1646-14  
 Misc :  
 ALS Vial : 7 Sample Multiplier: 1

Instrument :  
 BNA\_M  
 ClientSampleID :  
 BE5X8

Quant Method : Z:\HPCHEM1\BNA\_M\METHODS\SOM-EPA-BM021418.M  
 Quant Title : SVOA CALIBRATION

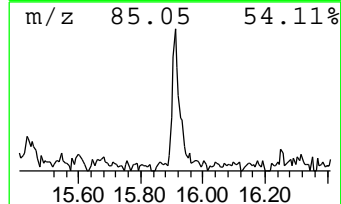
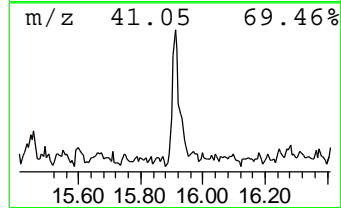
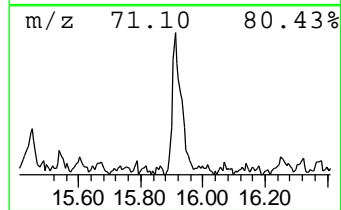
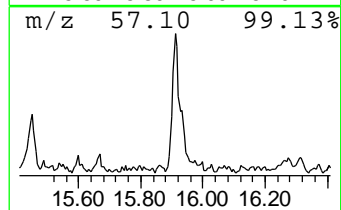
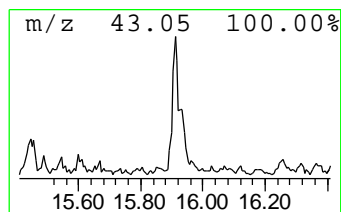
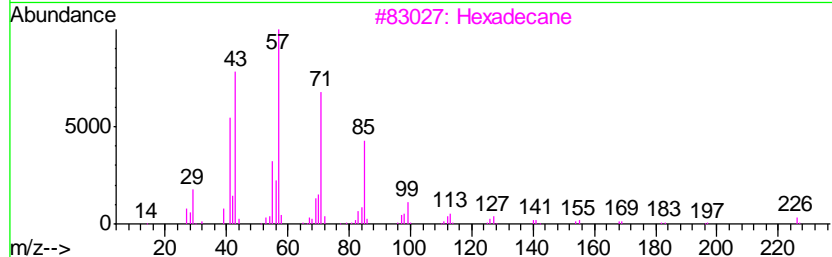
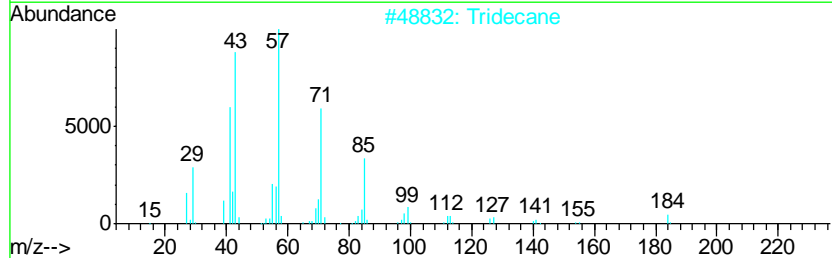
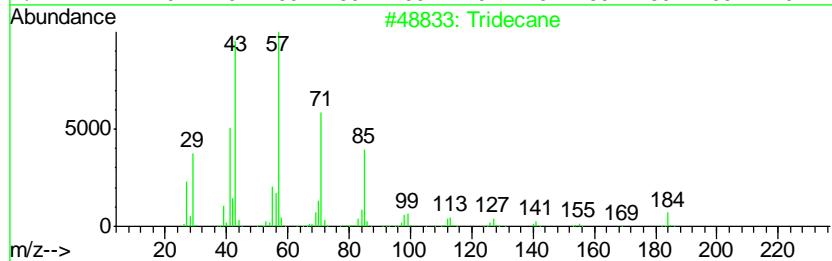
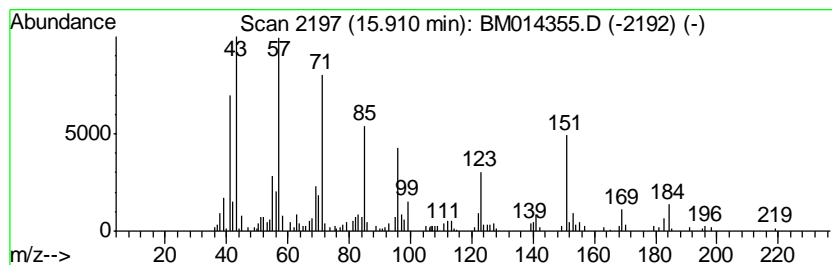
TIC Library : C:\DATABASE\NIST11.L  
 TIC Integration Parameters: LSCINT.P

\*\*\*\*\*  
 Peak Number 5 (DEL) Alkane: Straight-Chai... Concentration Rank 6

R.T.	EstConc	Area	Relative to ISTD	R.T.
15.91	4.03 ng/ul	422798	Phenanthrene-d10	16.94

Hit#	of	Tentative ID	MW	MolForm	CAS#	Qual
1	5	Tridecane	184	C13H28	000629-50-5	50
2		Tridecane	184	C13H28	000629-50-5	43
3		Hexadecane	226	C16H34	000544-76-3	43
4		Dodecane, 3-methyl-	184	C13H28	017312-57-1	43
5		2-Bromo dodecane	248	C12H25Br	013187-99-0	43



Data Path : \\74.0.250.170\SVOASRV\HPCHEM1\BNA\_M\DATA\BM022618\  
 Data File : BM014355.D  
 Acq On : 26 Feb 2018 14:23  
 Operator : SJ/JU  
 Sample : J1646-14  
 Misc :  
 ALS Vial : 7 Sample Multiplier: 1

Instrument :  
 BNA\_M  
 ClientSampleID :  
 BE5X8

Quant Method : Z:\HPCHEM1\BNA\_M\METHODS\SOM-EPA-BM021418.M  
 Quant Title : SVOA CALIBRATION

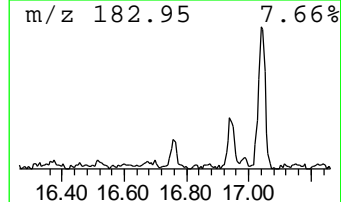
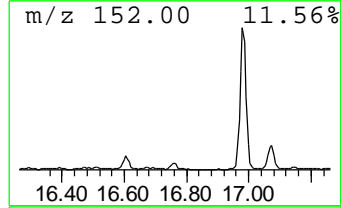
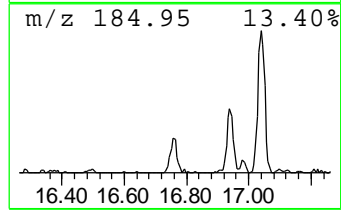
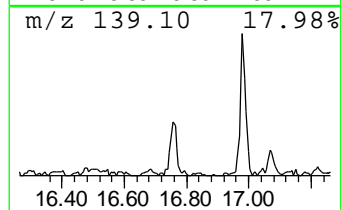
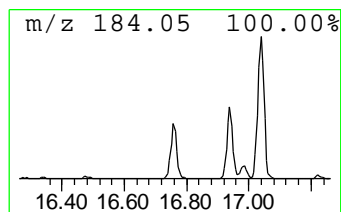
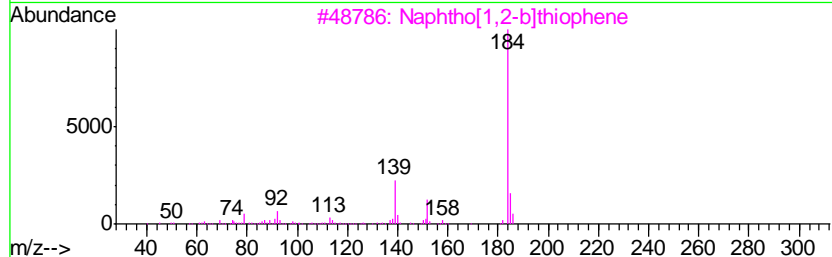
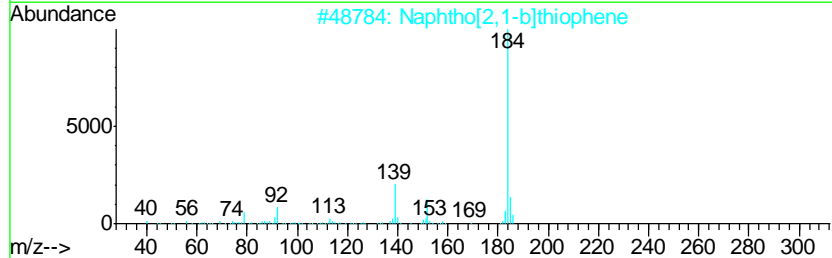
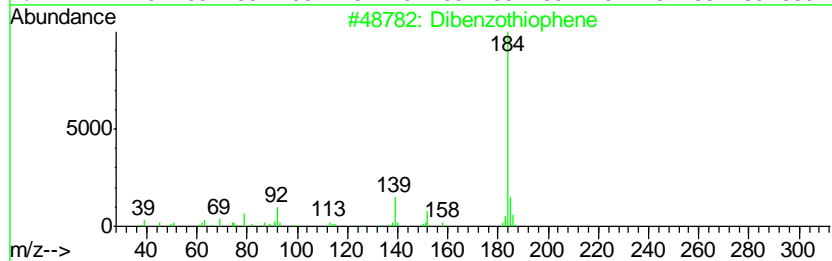
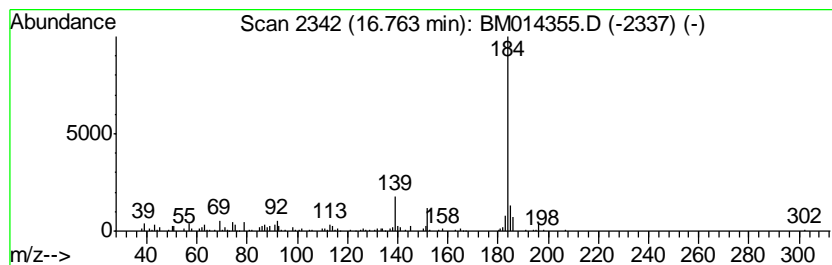
TIC Library : C:\DATABASE\NIST11.L  
 TIC Integration Parameters: LSCINT.P

\*\*\*\*\*  
 Peak Number 6 Dibenzothiophene Concentration Rank 13

R.T.	EstConc	Area	Relative to ISTD	R.T.
16.76	2.94 ng/ul	309003	Phenanthrene-d10	16.94

Hit#	of	Tentative ID	MW	MolForm	CAS#	Qual
1	5	Dibenzothiophene	184	C12H8S	000132-65-0	95
2		Naphtho[2,1-b]thiophene	184	C12H8S	000233-02-3	94
3		Naphtho[1,2-b]thiophene	184	C12H8S	000234-41-3	93
4		Dibenzothiophene	184	C12H8S	000132-65-0	93
5		Azuleno(2,1-b)thiophene	184	C12H8S	000248-13-5	91



Data Path : \\74.0.250.170\SVOASRV\HPCHEM1\BNA\_M\DATA\BM022618\  
 Data File : BM014355.D  
 Acq On : 26 Feb 2018 14:23  
 Operator : SJ/JU  
 Sample : J1646-14  
 Misc :  
 ALS Vial : 7 Sample Multiplier: 1

Instrument :  
 BNA\_M  
 ClientSampleId :  
 BE5X8

Quant Method : Z:\HPCHEM1\BNA\_M\METHODS\SOM-EPA-BM021418.M  
 Quant Title : SVOA CALIBRATION

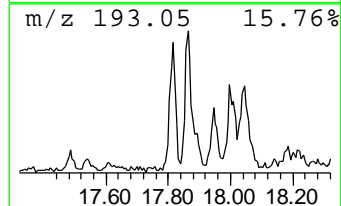
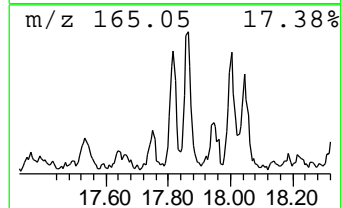
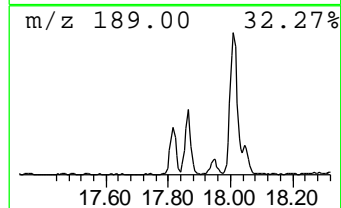
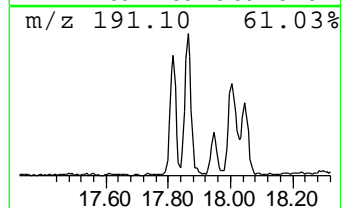
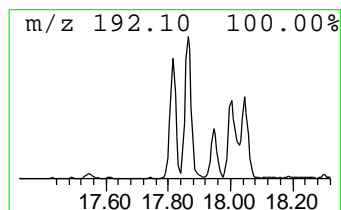
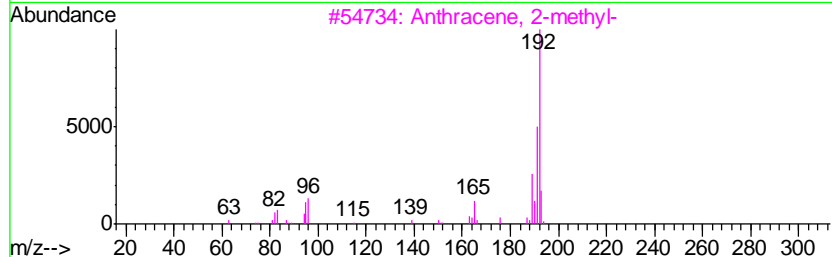
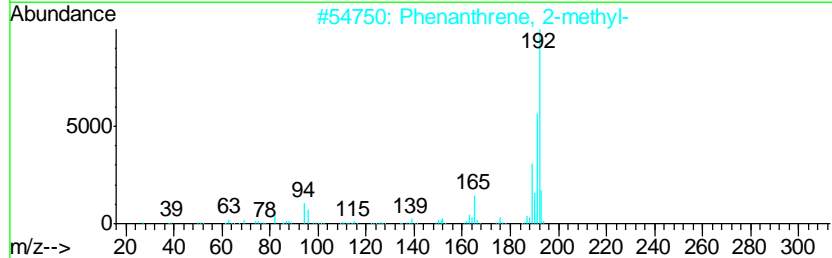
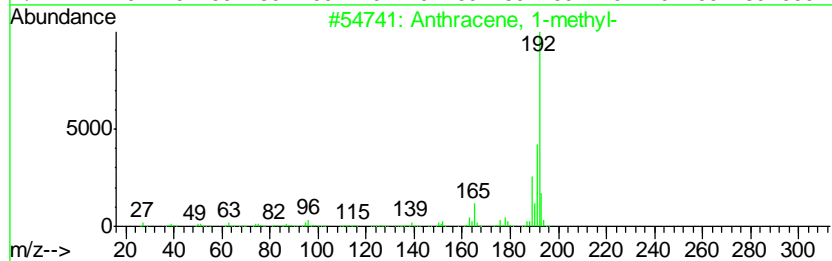
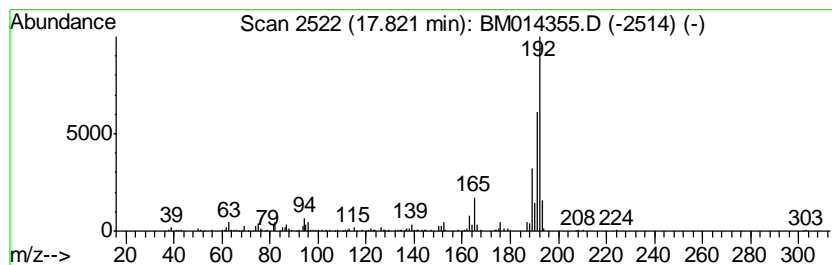
TIC Library : C:\DATABASE\NIST11.L  
 TIC Integration Parameters: LSCINT.P

\*\*\*\*\*  
 Peak Number 7 Anthracene, 1-methyl- Concentration Rank 4

R.T.	EstConc	Area	Relative to ISTD	R.T.
17.82	5.75 ng/ul	603936	Phenanthrene-d10	16.94

Hit#	of	Tentative ID	MW	MolForm	CAS#	Qual
1	5	Anthracene, 1-methyl-	192	C15H12	000610-48-0	95
2		Phenanthrene, 2-methyl-	192	C15H12	002531-84-2	93
3		Anthracene, 2-methyl-	192	C15H12	000613-12-7	91
4		Anthracene, 1-methyl-	192	C15H12	000610-48-0	91
5		Phenanthrene, 1-methyl-	192	C15H12	000832-69-9	91



Data Path : \\74.0.250.170\SVOASRV\HPCHEM1\BNA\_M\DATA\BM022618\  
 Data File : BM014355.D  
 Acq On : 26 Feb 2018 14:23  
 Operator : SJ/JU  
 Sample : J1646-14  
 Misc :  
 ALS Vial : 7 Sample Multiplier: 1

Instrument :  
 BNA\_M  
 ClientSampleID :  
 BE5X8

Quant Method : Z:\HPCHEM1\BNA\_M\METHODS\SOM-EPA-BM021418.M  
 Quant Title : SVOA CALIBRATION

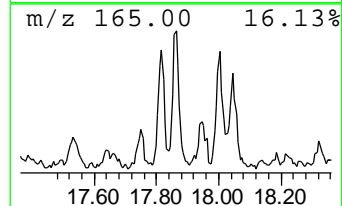
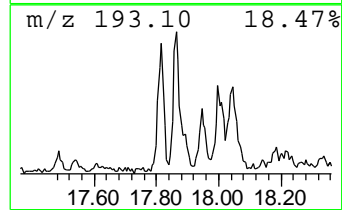
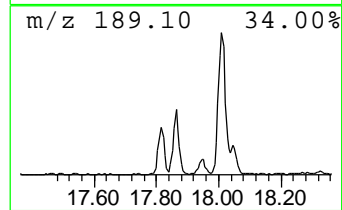
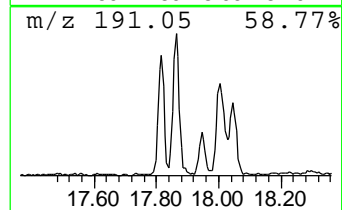
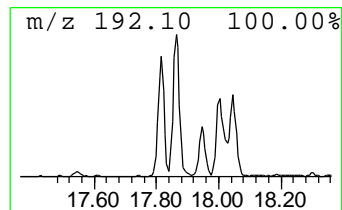
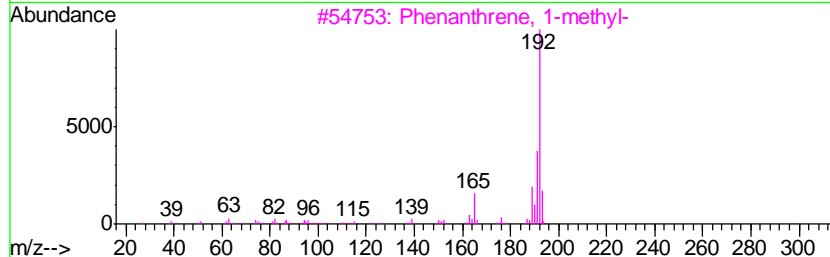
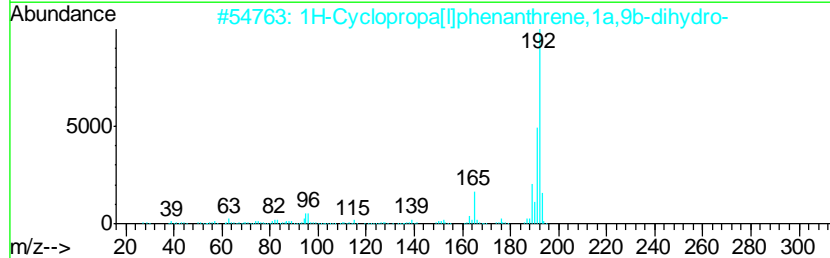
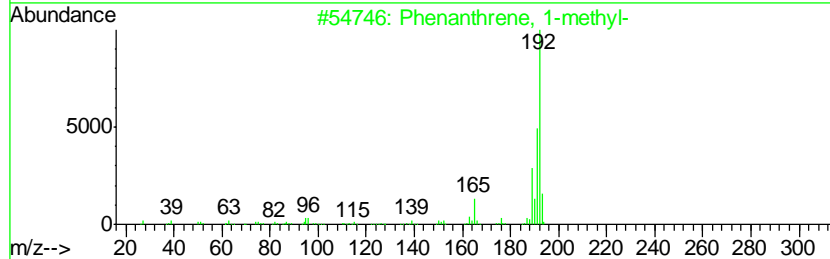
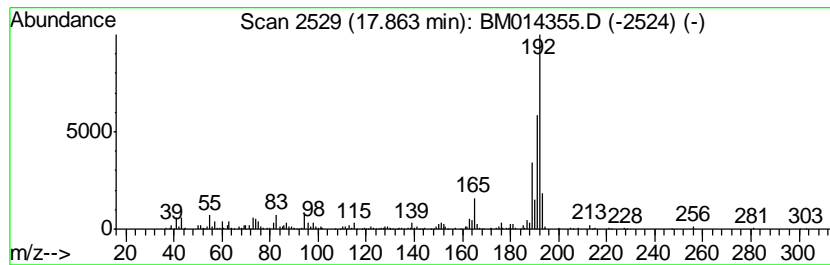
TIC Library : C:\DATABASE\NIST11.L  
 TIC Integration Parameters: LSCINT.P

\*\*\*\*\*  
 Peak Number 8 Phenanthrene, 1-methyl- Concentration Rank 1

R.T.	EstConc	Area	Relative to ISTD	R.T.
17.86	14.50 ng/ul	1522930	Phenanthrene-d10	16.94

Hit#	of	Tentative ID	MW	MolForm	CAS#	Qual
1	5	Phenanthrene, 1-methyl-	192	C15H12	000832-69-9	97
2		1H-Cyclopropa[1]phenanthrene,1a,...	192	C15H12	000949-41-7	93
3		Phenanthrene, 1-methyl-	192	C15H12	000832-69-9	92
4		Anthracene, 2-methyl-	192	C15H12	000613-12-7	89
5		1H-Indene, 2-phenyl-	192	C15H12	004505-48-0	86



Data Path : \\74.0.250.170\SVOASRV\HPCHEM1\BNA\_M\DATA\BM022618\  
 Data File : BM014355.D  
 Acq On : 26 Feb 2018 14:23  
 Operator : SJ/JU  
 Sample : J1646-14  
 Misc :  
 ALS Vial : 7 Sample Multiplier: 1

Instrument :  
 BNA\_M  
 ClientSampleID :  
 BE5X8

Quant Method : Z:\HPCHEM1\BNA\_M\METHODS\SOM-EPA-BM021418.M  
 Quant Title : SVOA CALIBRATION

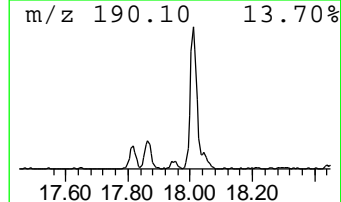
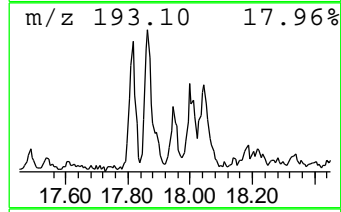
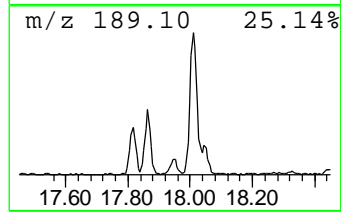
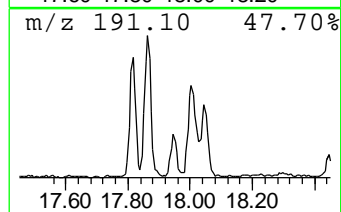
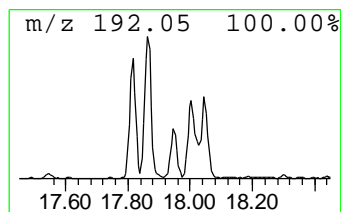
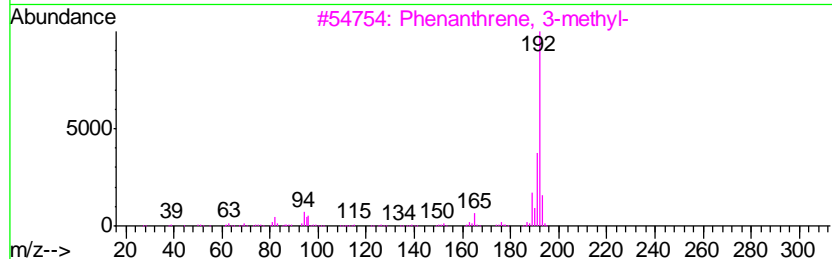
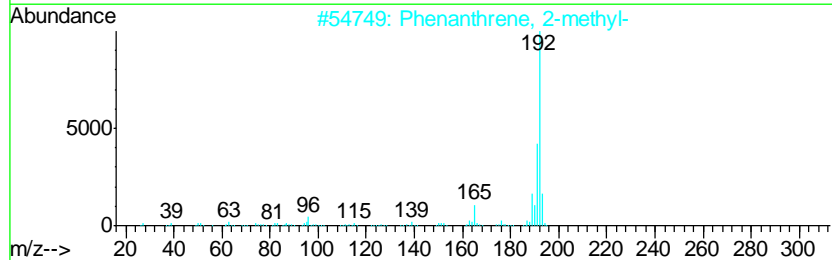
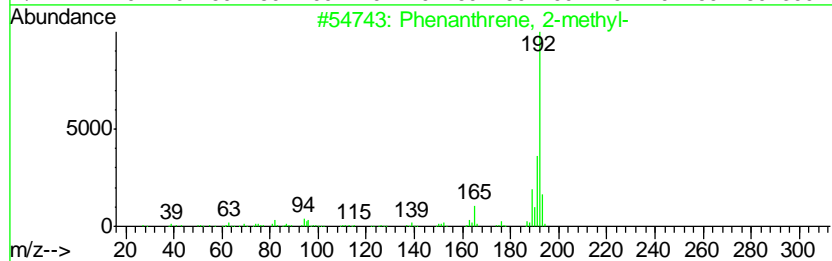
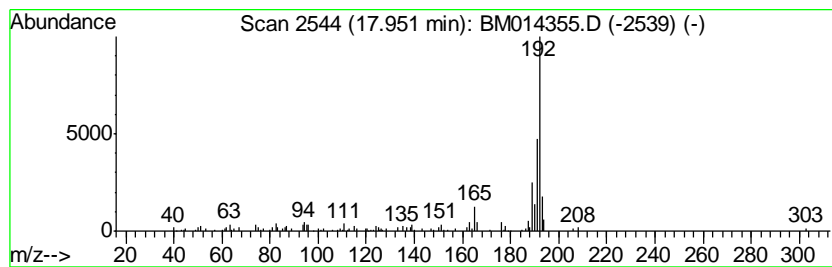
TIC Library : C:\DATABASE\NIST11.L  
 TIC Integration Parameters: LSCINT.P

\*\*\*\*\*  
 Peak Number 9 Phenanthrene, 2-methyl- Concentration Rank 16

R.T.	EstConc	Area	Relative to ISTD	R.T.
17.95	2.65 ng/ul	278585	Phenanthrene-d10	16.94

Hit#	of	Tentative ID	MW	MolForm	CAS#	Qual
1	5	Phenanthrene, 2-methyl-	192	C15H12	002531-84-2	91
2		Phenanthrene, 2-methyl-	192	C15H12	002531-84-2	91
3		Phenanthrene, 3-methyl-	192	C15H12	000832-71-3	87
4		Phenanthrene, 9-methyl-	192	C15H12	000883-20-5	83
5		Phenanthrene, 3-methyl-	192	C15H12	000832-71-3	83



Data Path : \\74.0.250.170\SVOASRV\HPCHEM1\BNA\_M\DATA\BM022618\  
 Data File : BM014355.D  
 Acq On : 26 Feb 2018 14:23  
 Operator : SJ/JU  
 Sample : J1646-14  
 Misc :  
 ALS Vial : 7 Sample Multiplier: 1

Instrument :  
 BNA\_M  
 ClientSampled :  
 BE5X8

Quant Method : Z:\HPCHEM1\BNA\_M\METHODS\SOM-EPA-BM021418.M  
 Quant Title : SVOA CALIBRATION

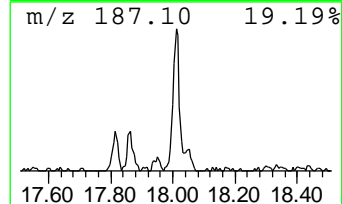
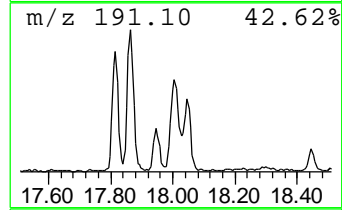
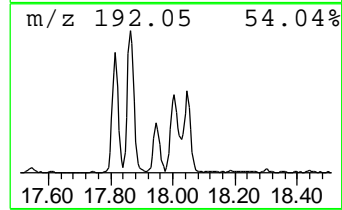
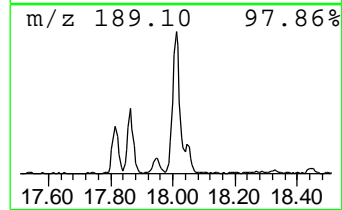
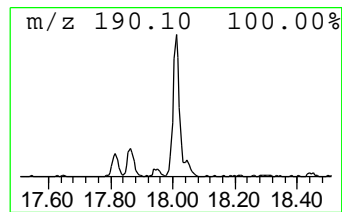
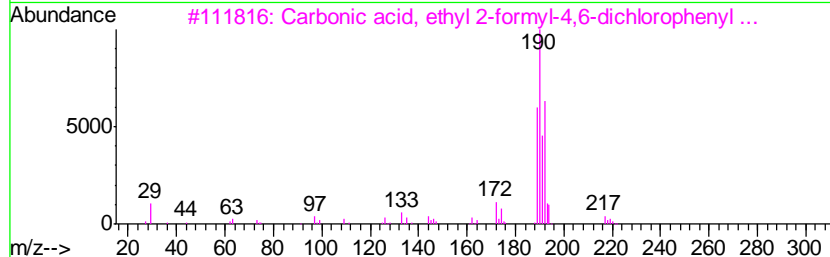
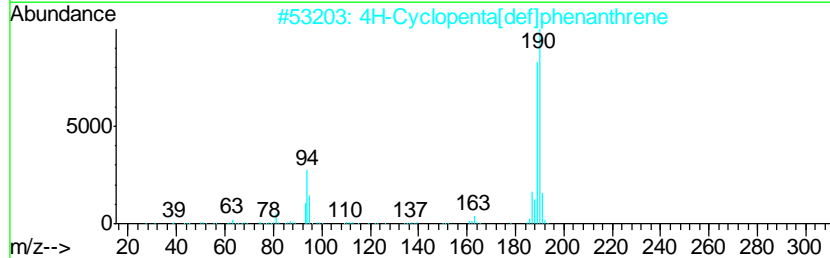
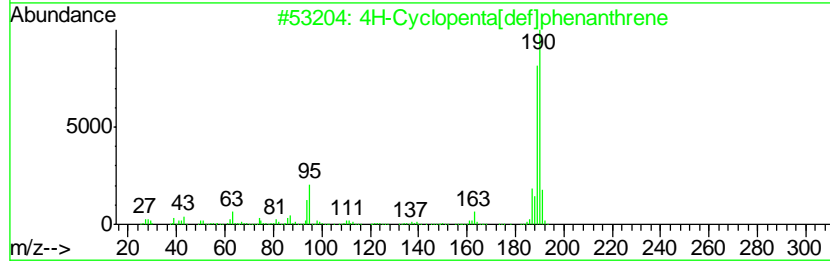
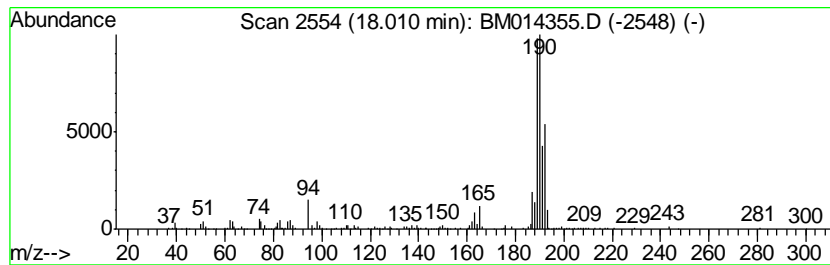
TIC Library : C:\DATABASE\NIST11.L  
 TIC Integration Parameters: LSCINT.P

\*\*\*\*\*  
 Peak Number 10 4H-Cyclopenta[def]phenanthrene Concentration Rank 2

R.T.	EstConc	Area	Relative to ISTD	R.T.
18.01	9.58 ng/ul	1005340	Phenanthrene-d10	16.94

Hit#	of	Tentative ID	MW	MolForm	CAS#	Qual
1	5	4H-Cyclopenta[def]phenanthrene	190	C15H10	000203-64-5	60
2		4H-Cyclopenta[def]phenanthrene	190	C15H10	000203-64-5	58
3		Carbonic acid, ethyl 2-formyl-4,...	262	C10H8Cl2O4	1000331-34-4	53
4		Benzaldehyde, 3,5-dichloro-2-hyd...	190	C7H4Cl2O2	000090-60-8	53
5		4H-Cyclopenta[def]phenanthrene	190	C15H10	000203-64-5	50



Data Path : \\74.0.250.170\SVOASRV\HPCHEM1\BNA\_M\DATA\BM022618\  
 Data File : BM014355.D  
 Acq On : 26 Feb 2018 14:23  
 Operator : SJ/JU  
 Sample : J1646-14  
 Misc :  
 ALS Vial : 7 Sample Multiplier: 1

Instrument :  
 BNA\_M  
 ClientSampled :  
 BE5X8

Quant Method : Z:\HPCHEM1\BNA\_M\METHODS\SOM-EPA-BM021418.M  
 Quant Title : SVOA CALIBRATION

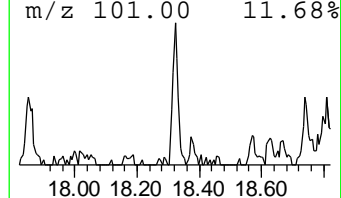
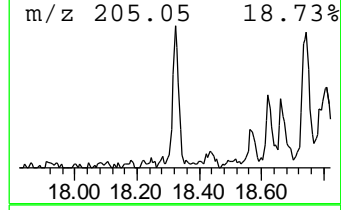
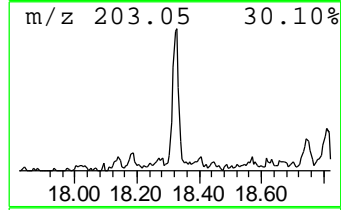
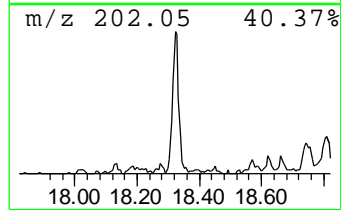
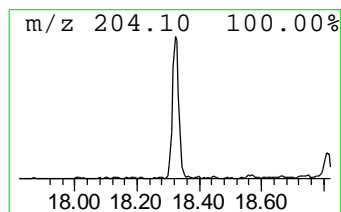
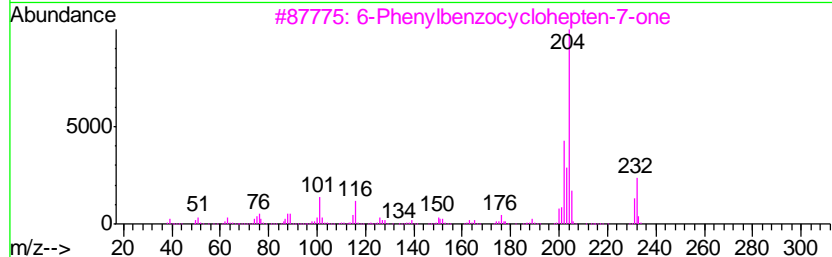
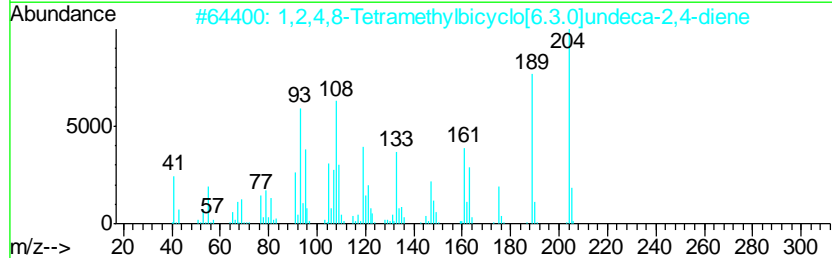
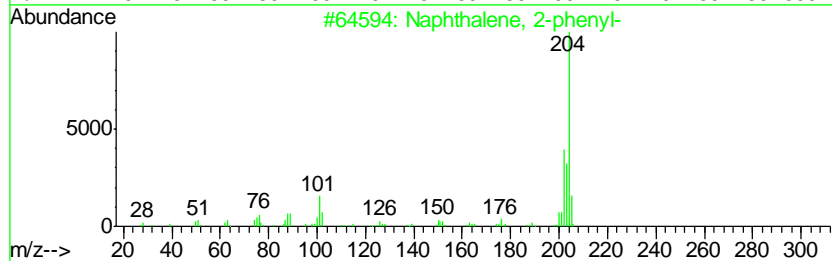
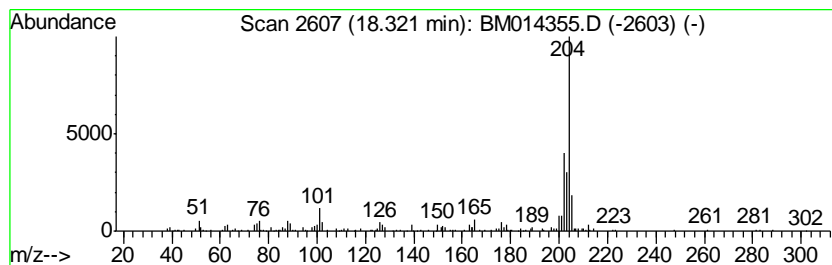
TIC Library : C:\DATABASE\NIST11.L  
 TIC Integration Parameters: LSCINT.P

\*\*\*\*\*  
 Peak Number 12 Naphthalene, 2-phenyl- Concentration Rank 9

R.T.	EstConc	Area	Relative to ISTD	R.T.
18.32	3.45 ng/ul	362309	Phenanthrene-d10	16.94

Hit#	of	Tentative ID	MW	MolForm	CAS#	Qual
1	5	Naphthalene, 2-phenyl-	204	C16H12	000612-94-2	94
2		1,2,4,8-Tetramethylbicyclo[6.3.0...]	204	C15H24	137235-51-9	90
3		6-Phenylbenzocyclohepten-7-one	232	C17H12O	093327-56-1	87
4		9,10-Bis(bromomethyl)anthracene	362	C16H12Br2	034373-96-1	87
5		Tricyclo[8.2.2.2(4,7)]hexadeca-2...	204	C16H12	006572-60-7	83



Data Path : \\74.0.250.170\SVOASRV\HPCHEM1\BNA\_M\DATA\BM022618\  
 Data File : BM014355.D  
 Acq On : 26 Feb 2018 14:23  
 Operator : SJ/JU  
 Sample : J1646-14  
 Misc :  
 ALS Vial : 7 Sample Multiplier: 1

Instrument :  
 BNA\_M  
 ClientSampleId :  
 BE5X8

Quant Method : Z:\HPCHEM1\BNA\_M\METHODS\SOM-EPA-BM021418.M  
 Quant Title : SVOA CALIBRATION

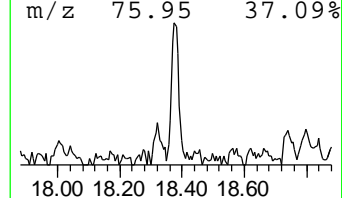
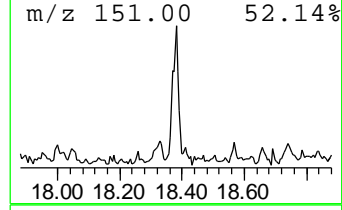
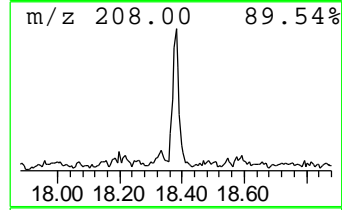
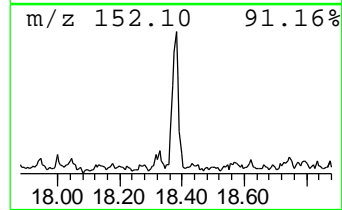
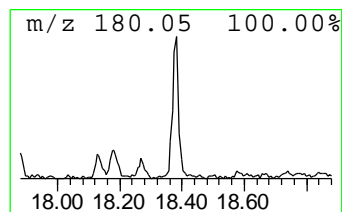
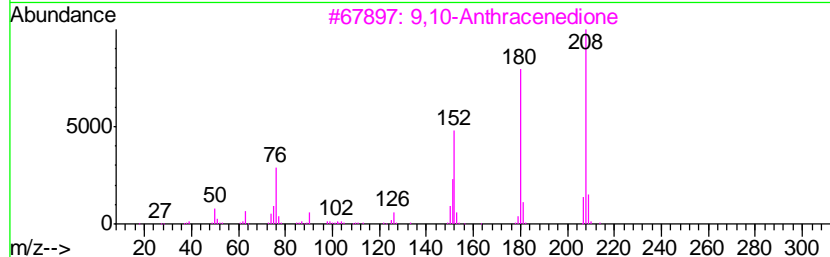
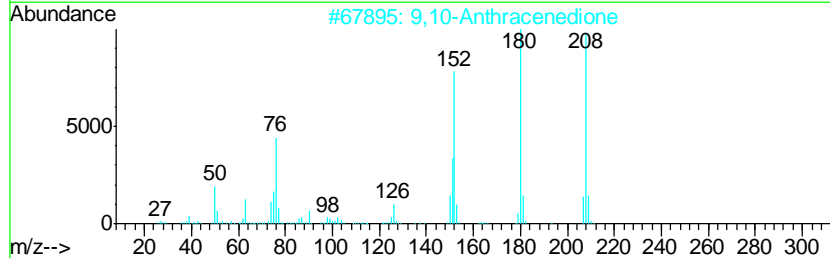
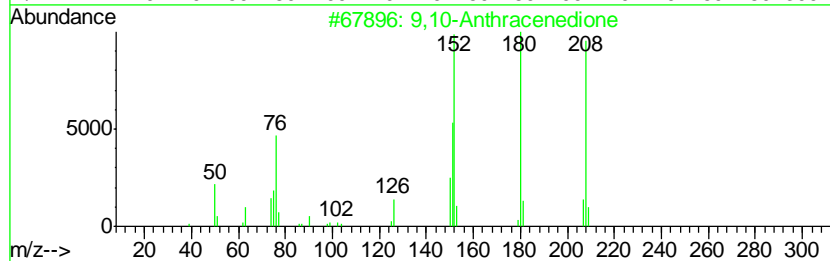
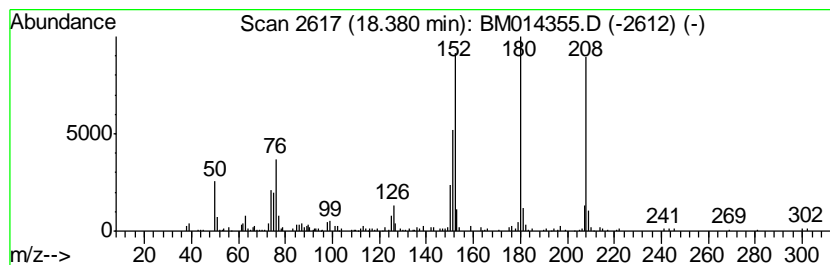
TIC Library : C:\DATABASE\NIST11.L  
 TIC Integration Parameters: LSCINT.P

\*\*\*\*\*  
 Peak Number 13 9,10-Anthracenedione Concentration Rank 10

R.T.	EstConc	Area	Relative to ISTD	R.T.
18.38	3.25 ng/ul	341200	Phenanthrene-d10	16.94

Hit#	of	Tentative ID	MW	MolForm	CAS#	Qual
1	5	9,10-Anthracenedione	208	C14H8O2	000084-65-1	98
2		9,10-Anthracenedione	208	C14H8O2	000084-65-1	92
3		9,10-Anthracenedione	208	C14H8O2	000084-65-1	89
4		Benzo[c]cinnoline	180	C12H8N2	000230-17-1	86
5		9H-Fluoren-9-one	180	C13H8O	000486-25-9	70





Data Path : \\74.0.250.170\SVOASRV\HPCHEM1\BNA\_M\DATA\BM022618\  
 Data File : BM014355.D  
 Acq On : 26 Feb 2018 14:23  
 Operator : SJ/JU  
 Sample : J1646-14  
 Misc :  
 ALS Vial : 7 Sample Multiplier: 1

Instrument :  
 BNA\_M  
 ClientSampled :  
 BE5X8

Quant Method : Z:\HPCHEM1\BNA\_M\METHODS\SOM-EPA-BM021418.M  
 Quant Title : SVOA CALIBRATION

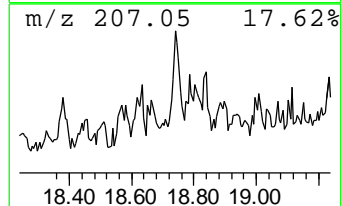
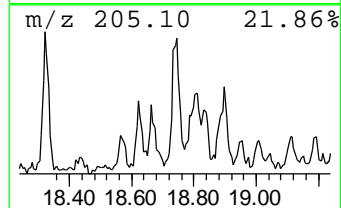
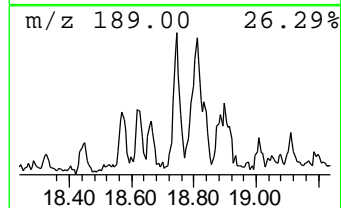
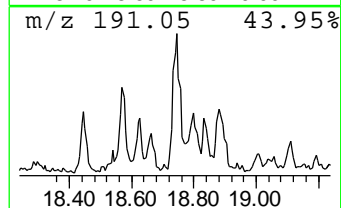
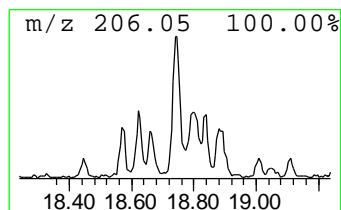
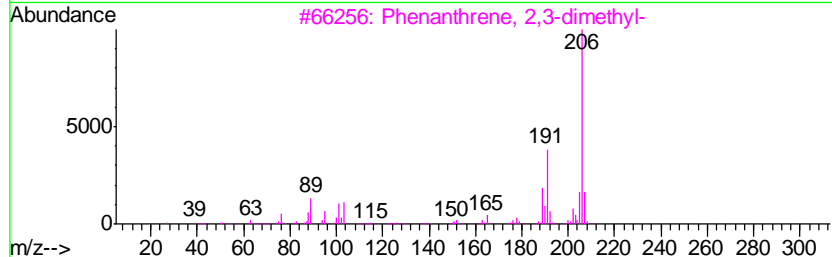
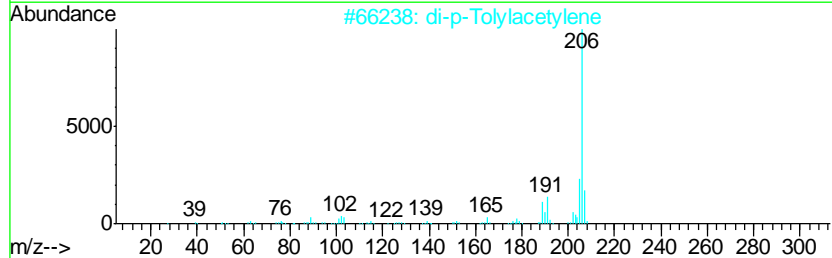
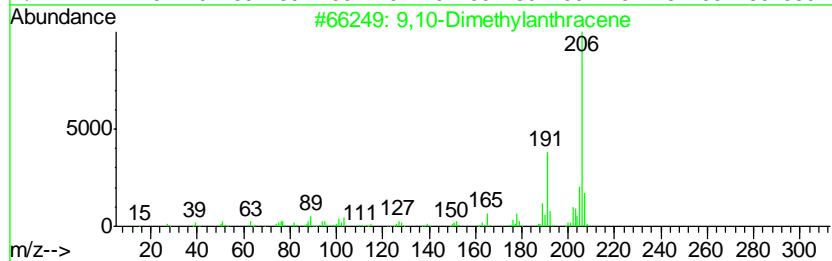
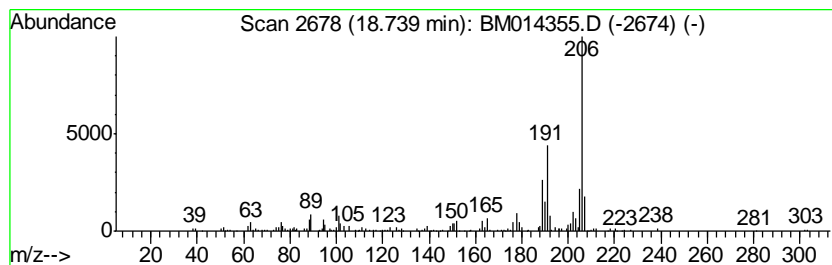
TIC Library : C:\DATABASE\NIST11.L  
 TIC Integration Parameters: LSCINT.P

\*\*\*\*\*  
 Peak Number 14 9,10-Dimethylantracene Concentration Rank 8

R.T.	EstConc	Area	Relative to ISTD	R.T.
18.74	3.60 ng/ul	378073	Phenanthrene-d10	16.94

Hit#	of	Tentative ID	MW	MolForm	CAS#	Qual
1	5	9,10-Dimethylantracene	206	C16H14	000781-43-1	91
2		di-p-Tolylacetylene	206	C16H14	002789-88-0	91
3		Phenanthrene, 2,3-dimethyl-	206	C16H14	003674-65-5	91
4		Phenanthrene, 1,7-dimethyl-	206	C16H14	000483-87-4	90
5		Phenanthrene, 2,5-dimethyl-	206	C16H14	003674-66-6	86



Data Path : \\74.0.250.170\SVOASRV\HPCHEM1\BNA\_M\DATA\BM022618\  
 Data File : BM014355.D  
 Acq On : 26 Feb 2018 14:23  
 Operator : SJ/JU  
 Sample : J1646-14  
 Misc :  
 ALS Vial : 7 Sample Multiplier: 1

Instrument :  
 BNA\_M  
 ClientSampleID :  
 BE5X8

Quant Method : Z:\HPCHEM1\BNA\_M\METHODS\SOM-EPA-BM021418.M  
 Quant Title : SVOA CALIBRATION

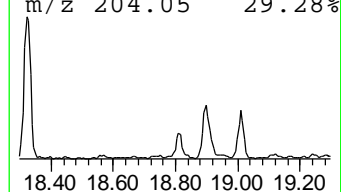
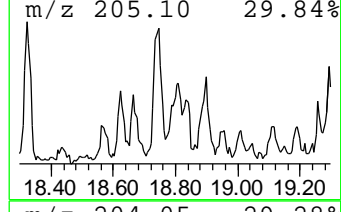
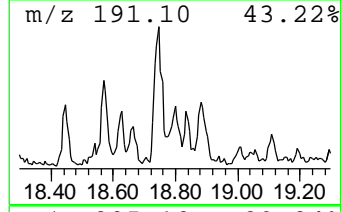
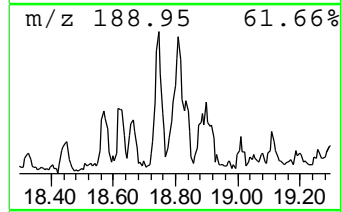
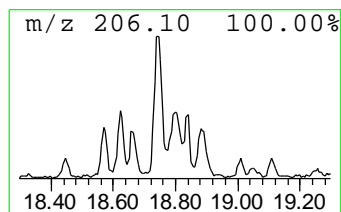
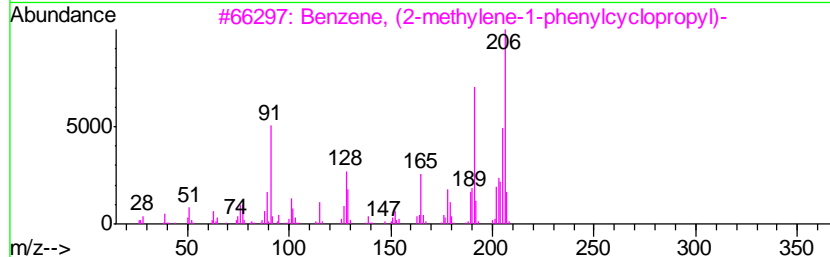
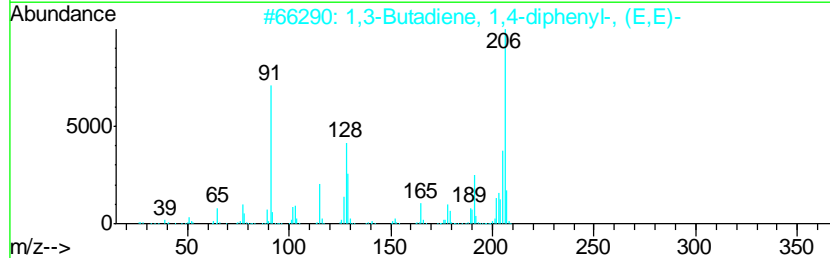
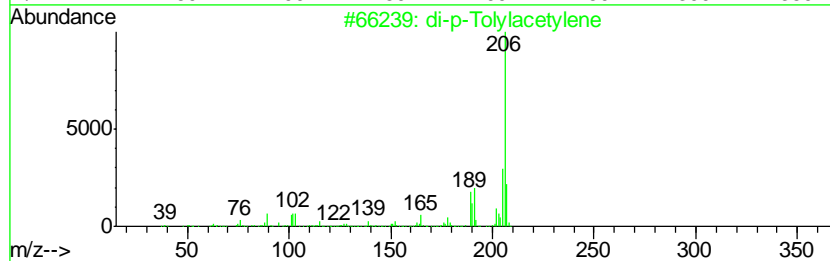
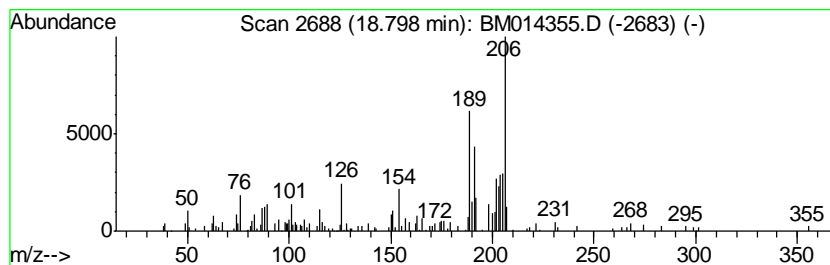
TIC Library : C:\DATABASE\NIST11.L  
 TIC Integration Parameters: LSCINT.P

\*\*\*\*\*  
 Peak Number 15 unknown-03 Concentration Rank 12

R.T.	EstConc	Area	Relative to ISTD	R.T.
18.80	2.96 ng/ul	311149	Phenanthrene-d10	16.94

Hit#	of	Tentative ID	MW	MolForm	CAS#	Qual
1	5	di-p-Tolylacetylene	206	C16H14	002789-88-0	38
2		1,3-Butadiene, 1,4-diphenyl-, (E...	206	C16H14	000538-81-8	38
3		Benzene, (2-methylene-1-phenylcy...	206	C16H14	025152-47-0	38
4		5-Methyl-2-(p-tolylimino)-1,3-th...	206	C11H14N2S	070446-87-6	35
5		Phenanthrene, 3,6-dimethyl-	206	C16H14	001576-67-6	30



Data Path : \\74.0.250.170\SVOASRV\HPCHEM1\BNA\_M\DATA\BM022618\  
 Data File : BM014355.D  
 Acq On : 26 Feb 2018 14:23  
 Operator : SJ/JU  
 Sample : J1646-14  
 Misc :  
 ALS Vial : 7 Sample Multiplier: 1

Instrument :  
 BNA\_M  
 ClientSampled :  
 BE5X8

Quant Method : Z:\HPCHEM1\BNA\_M\METHODS\SOM-EPA-BM021418.M  
 Quant Title : SVOA CALIBRATION

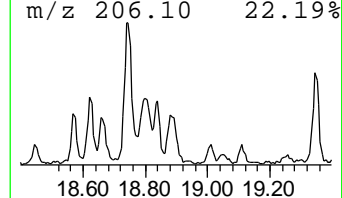
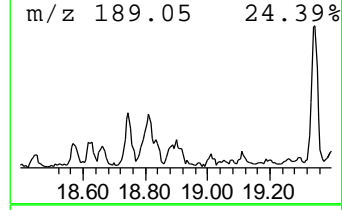
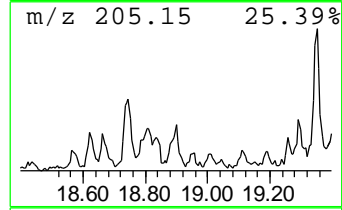
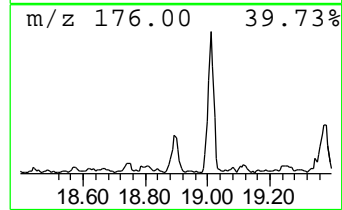
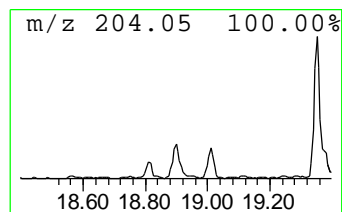
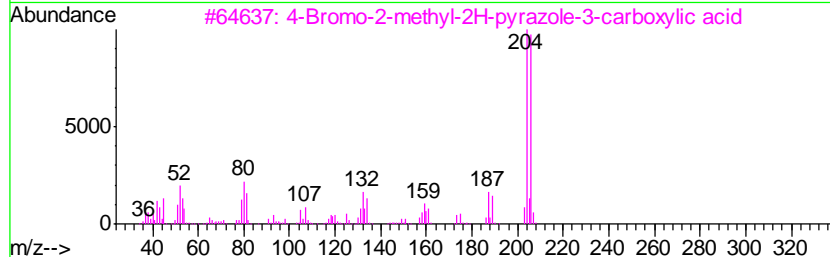
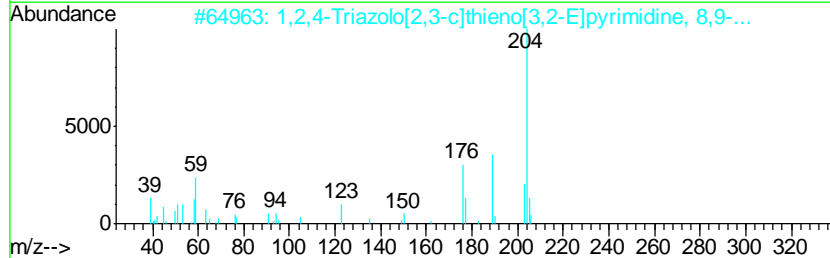
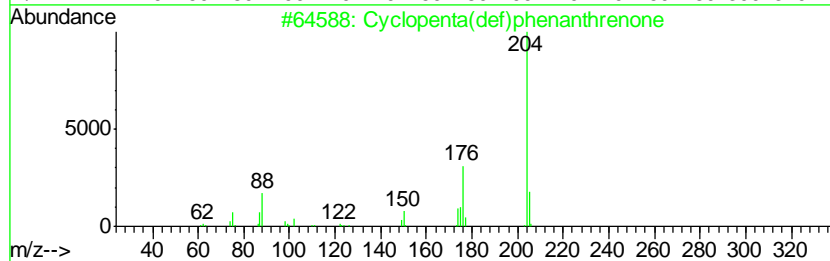
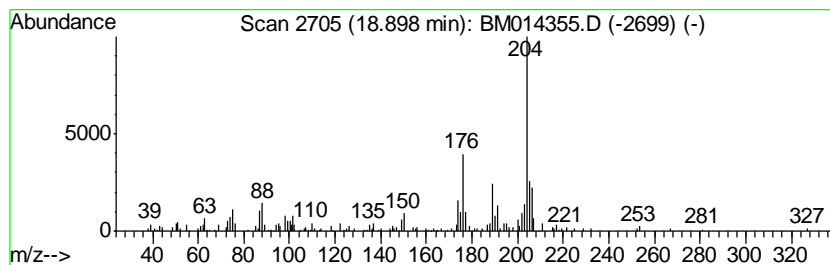
TIC Library : C:\DATABASE\NIST11.L  
 TIC Integration Parameters: LSCINT.P

\*\*\*\*\*  
 Peak Number 16 Cyclopenta(def)phenanthrenone Concentration Rank 17

R.T.	EstConc	Area	Relative to ISTD	R.T.
18.90	2.52 ng/ul	265075	Phenanthrene-d10	16.94

Hit#	of	Tentative ID	MW	MolForm	CAS#	Qual
1	5	Cyclopenta(def)phenanthrenone	204	C15H8O	005737-13-3	58
2		1,2,4-Triazolo[2,3-c]thieno[3,2-...	204	C9H8N4S	113246-88-1	50
3		4-Bromo-2-methyl-2H-pyrazole-3-c...	204	C5H5BrN2O2	1000300-50-8	38
4		1-(2-Acetylphenyl)-5-chloro-1H-p...	247	C13H10ClNO2	1000306-71-0	38
5		4-Quinolinol, 5,8-dimethoxy-2-me...	219	C12H13NO3	1000337-90-3	38



Data Path : \\74.0.250.170\SVOASRV\HPCHEM1\BNA\_M\DATA\BM022618\  
 Data File : BM014355.D  
 Acq On : 26 Feb 2018 14:23  
 Operator : SJ/JU  
 Sample : J1646-14  
 Misc :  
 ALS Vial : 7 Sample Multiplier: 1

Instrument :  
 BNA\_M  
 ClientSampleID :  
 BE5X8

Quant Method : Z:\HPCHEM1\BNA\_M\METHODS\SOM-EPA-BM021418.M  
 Quant Title : SVOA CALIBRATION

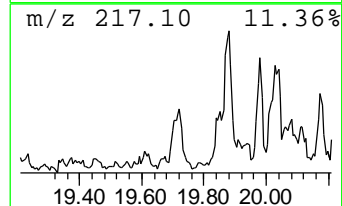
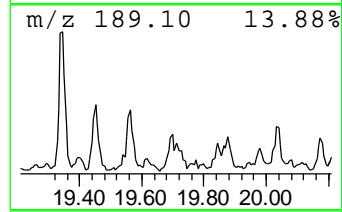
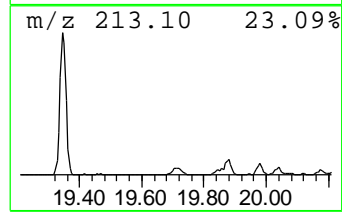
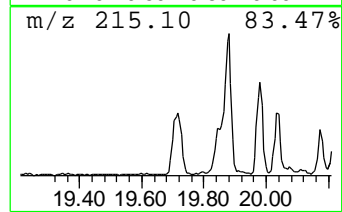
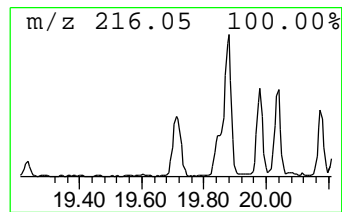
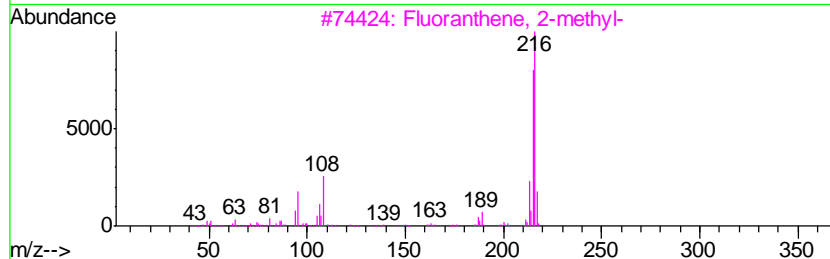
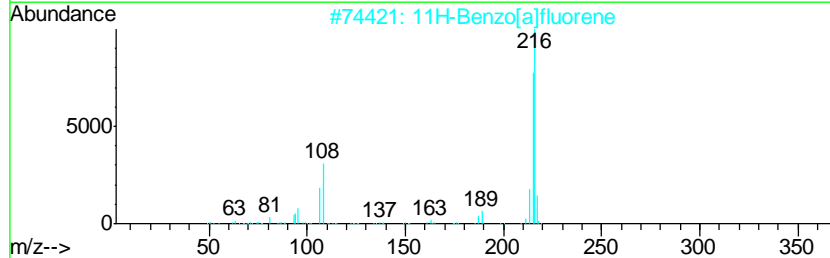
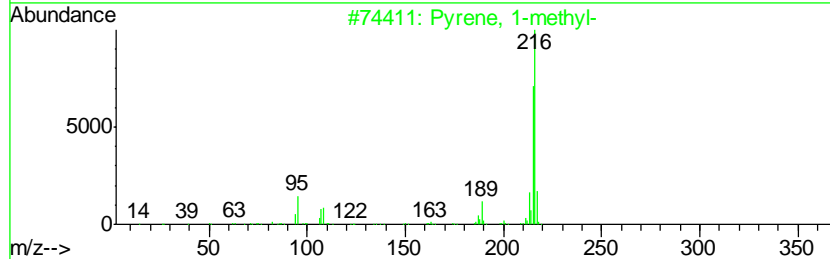
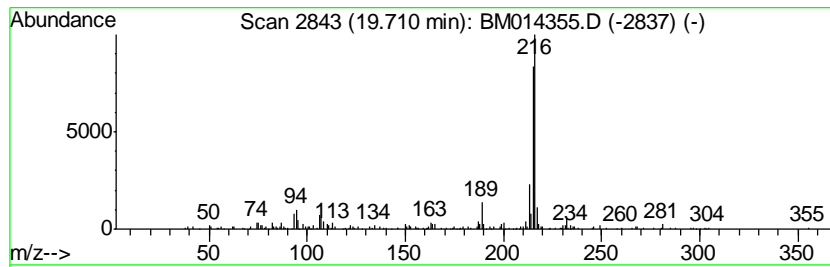
TIC Library : C:\DATABASE\NIST11.L  
 TIC Integration Parameters: LSCINT.P

\*\*\*\*\*  
 Peak Number 17 Pyrene, 1-methyl- Concentration Rank 21

R.T.	EstConc	Area	Relative to ISTD	R.T.
19.71	2.09 ng/ul	453866	Chrysene-d12	21.15

Hit#	of	Tentative ID	MW	MolForm	CAS#	Qual
1	5	Pyrene, 1-methyl-	216	C17H12	002381-21-7	93
2		11H-Benzo[a]fluorene	216	C17H12	000238-84-6	87
3		Fluoranthene, 2-methyl-	216	C17H12	033543-31-6	76
4		Fluoranthene, 2-methyl-	216	C17H12	033543-31-6	76
5		Pyrene, 1-methyl-	216	C17H12	002381-21-7	74



Data Path : \\74.0.250.170\SVOASRV\HPCHEM1\BNA\_M\DATA\BM022618\  
 Data File : BM014355.D  
 Acq On : 26 Feb 2018 14:23  
 Operator : SJ/JU  
 Sample : J1646-14  
 Misc :  
 ALS Vial : 7 Sample Multiplier: 1

Instrument :  
 BNA\_M  
 ClientSampleId :  
 BE5X8

Quant Method : Z:\HPCHEM1\BNA\_M\METHODS\SOM-EPA-BM021418.M  
 Quant Title : SVOA CALIBRATION

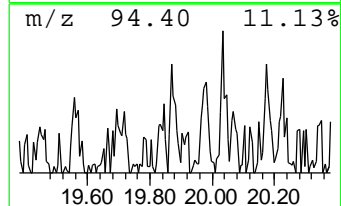
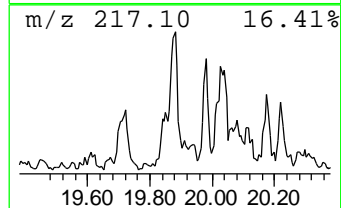
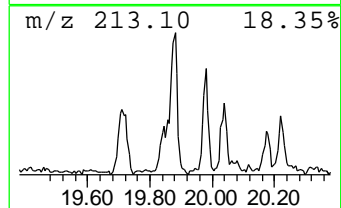
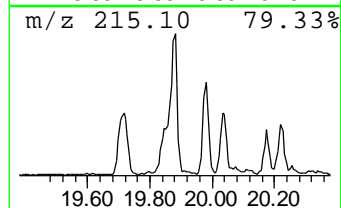
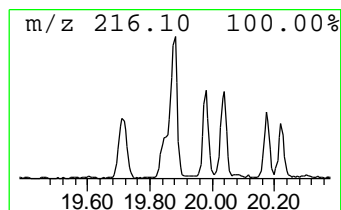
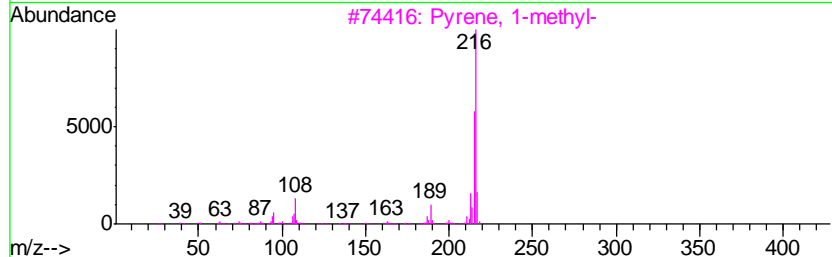
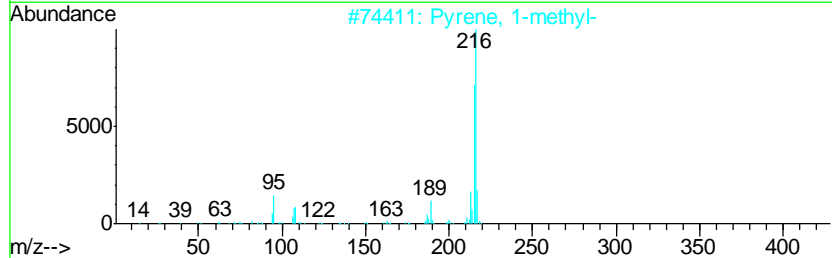
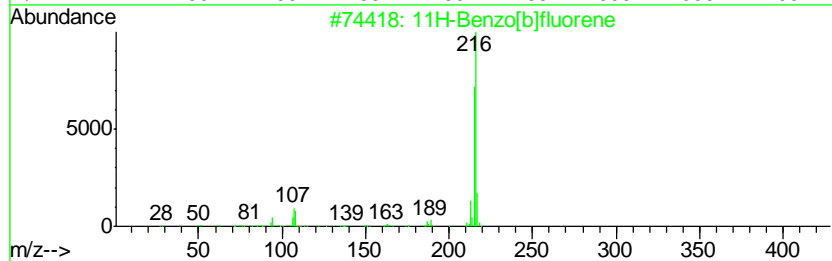
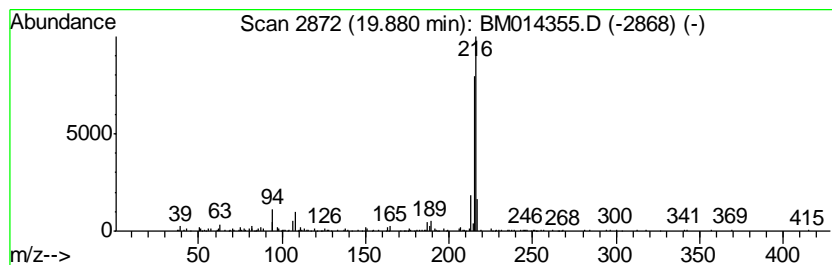
TIC Library : C:\DATABASE\NIST11.L  
 TIC Integration Parameters: LSCINT.P

\*\*\*\*\*  
 Peak Number 18 11H-Benzo[b]fluorene Concentration Rank 14

R.T.	EstConc	Area	Relative to ISTD	R.T.
19.88	2.84 ng/ul	615813	Chrysene-d12	21.15

Hit#	of	Tentative ID	MW	MolForm	CAS#	Qual
1	5	11H-Benzo[b]fluorene	216	C17H12	000243-17-4	95
2		Pyrene, 1-methyl-	216	C17H12	002381-21-7	87
3		Pyrene, 1-methyl-	216	C17H12	002381-21-7	83
4		11H-Benzo[b]fluorene	216	C17H12	000243-17-4	83
5		11H-Benzo[a]fluorene	216	C17H12	000238-84-6	80



Data Path : \\74.0.250.170\SVOASRV\HPCHEM1\BNA\_M\DATA\BM022618\  
 Data File : BM014355.D  
 Acq On : 26 Feb 2018 14:23  
 Operator : SJ/JU  
 Sample : J1646-14  
 Misc :  
 ALS Vial : 7 Sample Multiplier: 1

Instrument :  
 BNA\_M  
 ClientSampleID :  
 BE5X8

Quant Method : Z:\HPCHEM1\BNA\_M\METHODS\SOM-EPA-BM021418.M  
 Quant Title : SVOA CALIBRATION

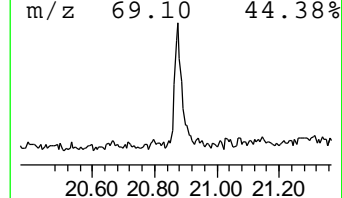
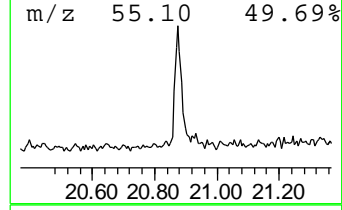
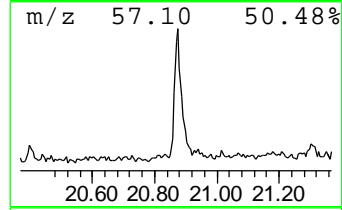
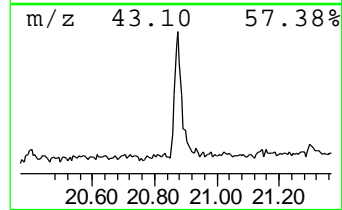
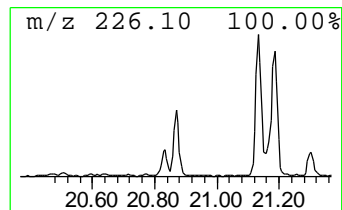
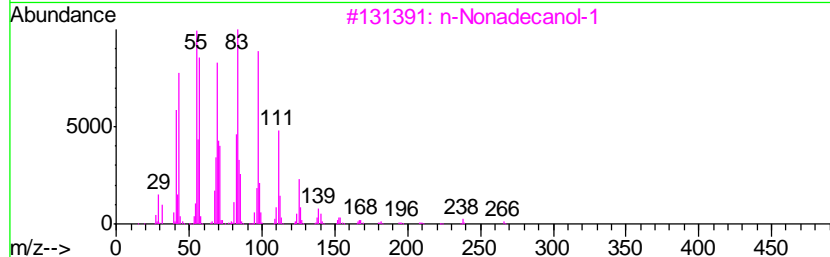
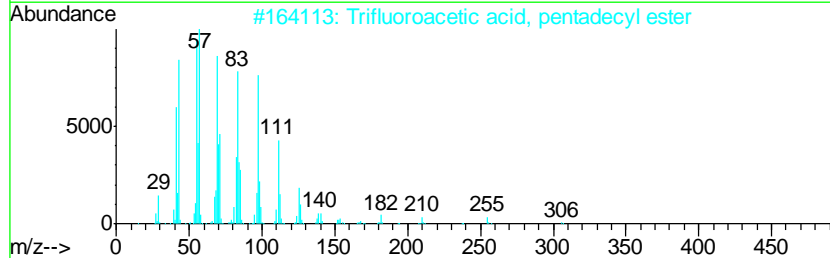
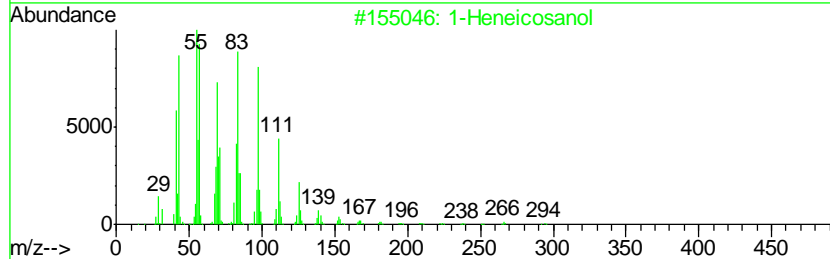
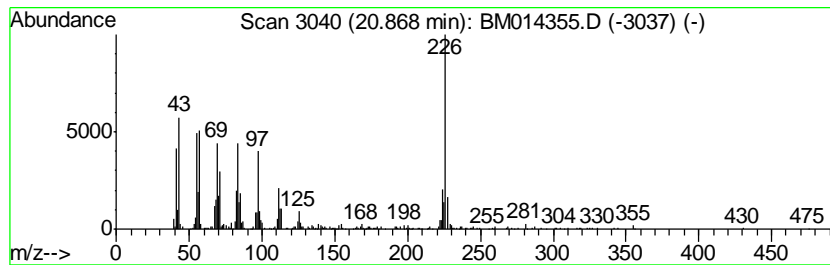
TIC Library : C:\DATABASE\NIST11.L  
 TIC Integration Parameters: LSCINT.P

\*\*\*\*\*  
 Peak Number 20 1-Heneicosanol Concentration Rank 5

R.T.	EstConc	Area	Relative to ISTD	R.T.
20.87	5.56 ng/ul	1206020	Chrysene-d12	21.15

Hit#	of	Tentative ID	MW	MolForm	CAS#	Qual
1	5	1-Heneicosanol	312	C21H44O	015594-90-8	89
2		Trifluoroacetic acid, pentadecyl...	324	C17H31F3O2	959010-23-2	83
3		n-Nonadecanol-1	284	C19H40O	001454-84-8	70
4		Heptadecyl heptafluorobutyrate	452	C21H35F7O2	959085-66-6	64
5		Pentafluoropropionic acid, tetra...	360	C17H29F5O2	006222-06-6	64



Data Path : \\74.0.250.170\SVOASRV\HPCHEM1\BNA\_M\DATA\BM022618\  
 Data File : BM014355.D  
 Acq On : 26 Feb 2018 14:23  
 Operator : SJ/JU  
 Sample : J1646-14  
 Misc :  
 ALS Vial : 7 Sample Multiplier: 1

Instrument :  
 BNA\_M  
 ClientSampleId :  
 BE5X8

Quant Method : Z:\HPCHEM1\BNA\_M\METHODS\SOM-EPA-BM021418.M  
 Quant Title : SVOA CALIBRATION

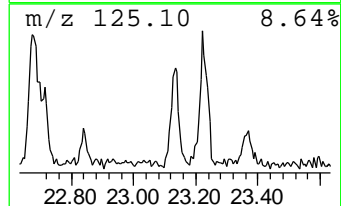
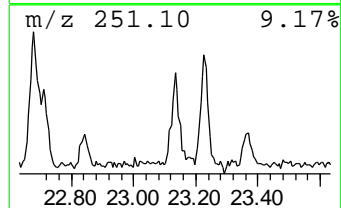
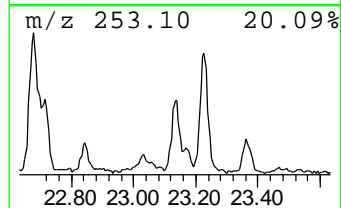
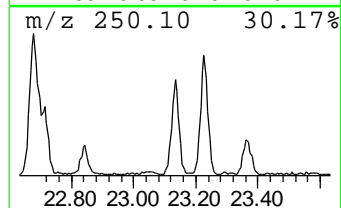
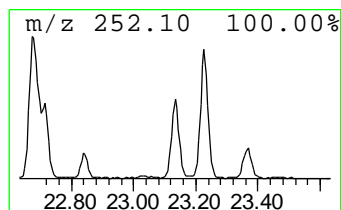
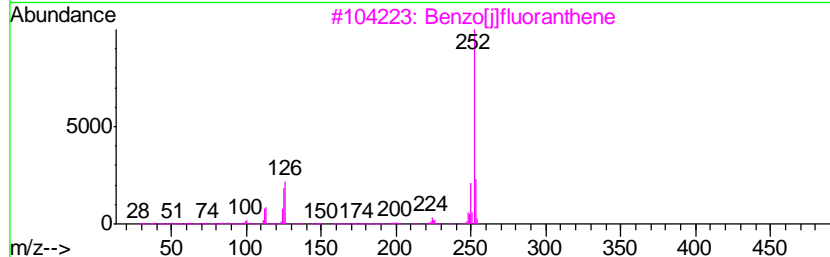
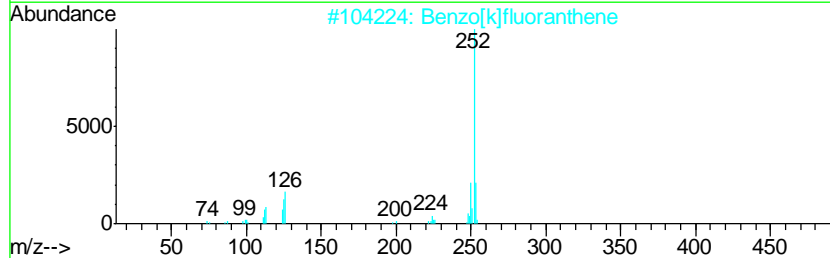
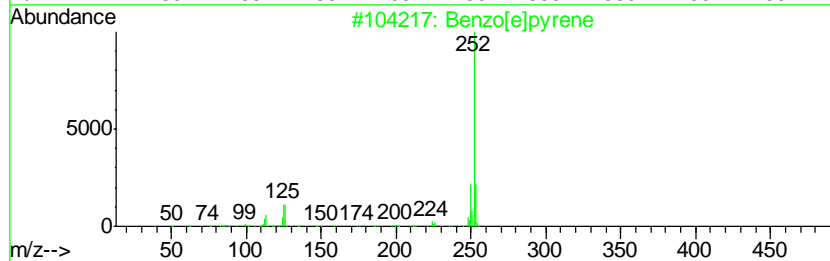
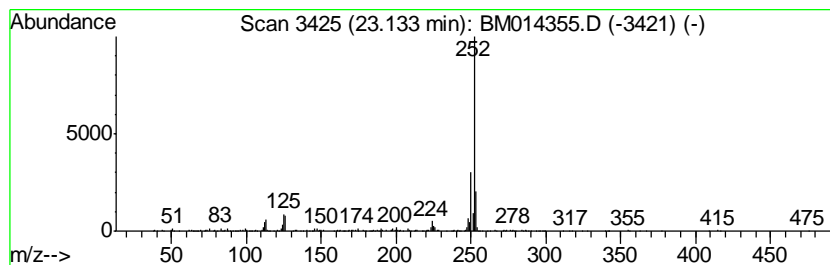
TIC Library : C:\DATABASE\NIST11.L  
 TIC Integration Parameters: LSCINT.P

\*\*\*\*\*  
 Peak Number 21 Benzo[e]pyrene Concentration Rank 3

R.T.	EstConc	Area	Relative to ISTD	R.T.
23.13	9.13 ng/ul	606567	Perylene-d12	23.32

Hit#	of	Tentative ID	MW	MolForm	CAS#	Qual
1	5	Benzo[e]pyrene	252	C20H12	000192-97-2	96
2		Benzo[k]fluoranthene	252	C20H12	000207-08-9	95
3		Benzo[j]fluoranthene	252	C20H12	000205-82-3	93
4		Benzo[a]pyrene	252	C20H12	000050-32-8	93
5		Benz[e]acephenanthrylene	252	C20H12	000205-99-2	90



Data Path : \\74.0.250.170\SVOASRV\HPCHEM1\BNA\_M\DATA\BM022618\  
 Data File : BM014355.D  
 Acq On : 26 Feb 2018 14:23  
 Operator : SJ/JU  
 Sample : J1646-14  
 Misc :  
 ALS Vial : 7 Sample Multiplier: 1

Instrument :  
 BNA\_M  
 ClientSampleId :  
 BE5X8

Quant Method : Z:\HPCHEM1\BNA\_M\METHODS\SOM-EPA-BM021418.M  
 Quant Title : SVOA CALIBRATION

TIC Library : C:\DATABASE\NIST11.L  
 TIC Integration Parameters: LSCINT.P

TIC Top Hit name	RT	EstConc	Units	Response	--Internal Standard--			
					#	RT	Resp	Conc
unknown-01	4.68	2.4	ng/ul	101115	1	7.52	856700	20.0
unknown-02	4.70	3.8	ng/ul	163309	1	7.52	856700	20.0
Naphthalene, 1-me...	12.19	2.3	ng/ul	146329	2	10.29	1279530	20.0
9H-Fluoren-9-ol	15.53	2.7	ng/ul	235134	3	14.18	1767250	20.0
(DEL) Alkane: Str...	15.91	4.0	ng/ul	422798	4	16.94	2099930	20.0
Dibenzothiophene	16.76	2.9	ng/ul	309003	4	16.94	2099930	20.0
Anthracene, 1-met...	17.82	5.8	ng/ul	603936	4	16.94	2099930	20.0
Phenanthrene, 1-m...	17.86	14.5	ng/ul	1522930	4	16.94	2099930	20.0
Phenanthrene, 2-m...	17.95	2.6	ng/ul	278585	4	16.94	2099930	20.0
4H-Cyclopenta[def...	18.01	9.6	ng/ul	1005340	4	16.94	2099930	20.0
Naphthalene, 2-ph...	18.32	3.5	ng/ul	362309	4	16.94	2099930	20.0
9,10-Anthracenedione	18.38	3.3	ng/ul	341200	4	16.94	2099930	20.0
9,10-Dimethylanth...	18.74	3.6	ng/ul	378073	4	16.94	2099930	20.0
unknown-03	18.80	3.0	ng/ul	311149	4	16.94	2099930	20.0
Cyclopenta(def)ph...	18.90	2.5	ng/ul	265075	4	16.94	2099930	20.0
Pyrene, 1-methyl-	19.71	2.1	ng/ul	453866	5	21.15	4335220	20.0
11H-Benzo[b]fluorene	19.88	2.8	ng/ul	615813	5	21.15	4335220	20.0
1-Heneicosanol	20.87	5.6	ng/ul	1206020	5	21.15	4335220	20.0
Benzo[e]pyrene	23.13	9.1	ng/ul	606567	6	23.32	1328450	20.0