

Data Path : \\74.0.250.170\SVOASRV\HPCHEM1\BNA_M\DATA\BM022618\
 Data File : BM014366.D
 Acq On : 26 Feb 2018 21:00
 Operator : SJ/JU
 Sample : J1631-19
 Misc :
 ALS Vial : 17 Sample Multiplier: 1

Instrument :
 BNA_M
 ClientSampleId :
 BE607

Integration Parameters: LSCINT.P

Integrator: RTE
 Smoothing : OFF
 Sampling : 1
 Start Thrs: 0.2
 Stop Thrs : 0

Filtering: 5
 Min Area: 1 % of largest Peak
 Max Peaks: 100
 Peak Location: TOP

If leading or trailing edge < 100 prefer < Baseline drop else tangent >
 Peak separation: 5

Method : Z:\HPCHEM1\BNA_M\METHODS\SOM-EPA-BM021418.M
 Title : SVOA CALIBRATION

Signal : TIC

peak #	R.T. min	first scan	max scan	last scan	PK TY	peak height	corr. area	corr. % max.	% of total
1	3.105	16	20	25	rVB4	36403	47812	1.34%	0.094%
2	3.704	118	122	129	rVB2	26227	41496	1.17%	0.082%
3	3.904	153	156	162	rVB4	39047	56680	1.59%	0.112%
4	4.681	283	288	299	rVB	103699	188473	5.30%	0.371%
5	5.951	499	504	510	rVB2	39531	65560	1.84%	0.129%
6	6.722	627	635	650	rVB	685529	1391778	39.14%	2.740%
7	6.875	656	661	673	rBV	533124	894769	25.16%	1.762%
8	7.063	687	693	705	rBV	798973	1286404	36.17%	2.533%
9	7.522	765	771	782	rBV	705528	1177973	33.12%	2.319%
10	8.245	888	894	908	rBV	948407	1670974	46.99%	3.290%
11	8.351	908	912	918	rVV4	51656	99141	2.79%	0.195%
12	8.422	918	924	935	rVV	94627	213598	6.01%	0.421%
13	8.510	935	939	945	rVB4	26063	47047	1.32%	0.093%
14	8.687	960	969	978	rBV	756683	1331834	37.45%	2.622%
15	8.822	987	992	1001	rVB6	21634	41111	1.16%	0.081%
16	9.063	1028	1033	1041	rVB5	22174	38603	1.09%	0.076%
17	9.398	1083	1090	1101	rBV	678653	1191227	33.50%	2.346%
18	9.933	1175	1181	1194	rBV	905615	1713003	48.17%	3.373%
19	10.292	1233	1242	1249	rBV	1045645	1743536	49.03%	3.433%
20	10.345	1249	1251	1256	rVB	39375	53653	1.51%	0.106%
21	10.451	1261	1269	1289	rBV	735996	1499472	42.17%	2.953%
22	11.904	1511	1516	1526	rBV6	16677	46739	1.31%	0.092%
23	13.133	1719	1725	1735	rBV10	18127	41615	1.17%	0.082%
24	13.604	1797	1805	1810	rBV	1796228	2569377	72.25%	5.059%
25	13.651	1810	1813	1820	rVB	753761	1028771	28.93%	2.026%
26	13.874	1841	1851	1860	rBV	1998678	3020108	84.93%	5.947%
27	14.086	1877	1887	1891	rBV3	64733	108606	3.05%	0.214%
28	14.186	1896	1904	1911	rBV2	1415879	2183849	61.41%	4.300%
29	14.445	1942	1948	1957	rBV	322098	784760	22.07%	1.545%
30	14.627	1976	1979	1987	rVV7	37512	78374	2.20%	0.154%
31	14.786	2002	2006	2012	rVB6	22953	36848	1.04%	0.073%
32	14.992	2037	2041	2043	rBV2	33006	41835	1.18%	0.082%
33	15.027	2043	2047	2056	rVB2	149245	308795	8.68%	0.608%
34	15.186	2065	2074	2081	rBV	2456614	3442314	96.80%	6.778%

Data Path : \\74.0.250.170\SVOASRV\HPCHEM1\BNA_M\DATA\BM022618\
 Data File : BM014366.D
 Acq On : 26 Feb 2018 21:00
 Operator : SJ/JU
 Sample : J1631-19
 Misc :
 ALS Vial : 17 Sample Multiplier: 1

Instrument :
 BNA_M
 ClientSampleId :
 BE607

Integration Parameters: LSCINT.P

Integrator: RTE
 Smoothing : OFF Filtering: 5
 Sampling : 1 Min Area: 1 % of largest Peak
 Start Thrs: 0.2 Max Peaks: 100
 Stop Thrs : 0 Peak Location: TOP

If leading or trailing edge < 100 prefer < Baseline drop else tangent >
 Peak separation: 5

Method : Z:\HPCHEM1\BNA_M\METHODS\SOM-EPA-BM021418.M
 Title : SVOA CALIBRATION

35	15.345	2095	2101	2108	rBV2	176632	298198	8.39%	0.587%
36	15.433	2111	2116	2117	rVV3	40395	56816	1.60%	0.112%
37	15.457	2117	2120	2126	rVB4	49487	81844	2.30%	0.161%
38	15.910	2192	2197	2207	rBV	153327	268453	7.55%	0.529%
39	16.268	2249	2258	2263	rBV9	42138	101768	2.86%	0.200%
40	16.704	2329	2332	2336	rBV2	75250	100421	2.82%	0.198%
41	16.945	2365	2373	2378	rBV	1612643	2322684	65.31%	4.573%
42	16.986	2378	2380	2383	rVV4	50246	57099	1.61%	0.112%
43	17.039	2383	2389	2402	rVB	2482244	3556178	100.00%	7.002%
44	17.151	2402	2408	2409	rBV6	29757	45212	1.27%	0.089%
45	17.239	2420	2423	2428	rBV6	25890	48612	1.37%	0.096%
46	17.445	2455	2458	2461	rBV3	40909	40554	1.14%	0.080%
47	17.621	2484	2488	2492	rBV7	34459	52616	1.48%	0.104%
48	17.727	2500	2506	2508	rBV7	26066	45475	1.28%	0.090%
49	17.857	2522	2528	2537	rBV	698201	1158282	32.57%	2.281%
50	18.039	2553	2559	2561	rBV5	36645	78301	2.20%	0.154%
51	18.133	2571	2575	2580	rBV7	70689	104701	2.94%	0.206%
52	19.015	2722	2725	2730	rVB3	104059	152796	4.30%	0.301%
53	19.145	2743	2747	2753	rBV2	277224	441416	12.41%	0.869%
54	19.351	2777	2782	2790	rVB	2427150	3203145	90.07%	6.307%
55	19.880	2870	2872	2873	rBV2	66558	56388	1.59%	0.111%
56	20.874	3037	3041	3049	rBV	1236452	1723824	48.47%	3.394%
57	21.150	3084	3088	3094	rBV	1257589	1746398	49.11%	3.439%
58	21.733	3184	3187	3188	rBV2	235063	246459	6.93%	0.485%
59	21.762	3188	3192	3199	rVB2	873070	1530371	43.03%	3.013%
60	22.662	3342	3345	3349	rVB	315387	394186	11.08%	0.776%
61	22.715	3351	3354	3363	rVB	448813	783169	22.02%	1.542%
62	23.191	3430	3435	3443	rVB2	1354901	2342870	65.88%	4.613%
63	23.327	3453	3458	3464	rVB	721152	1262102	35.49%	2.485%

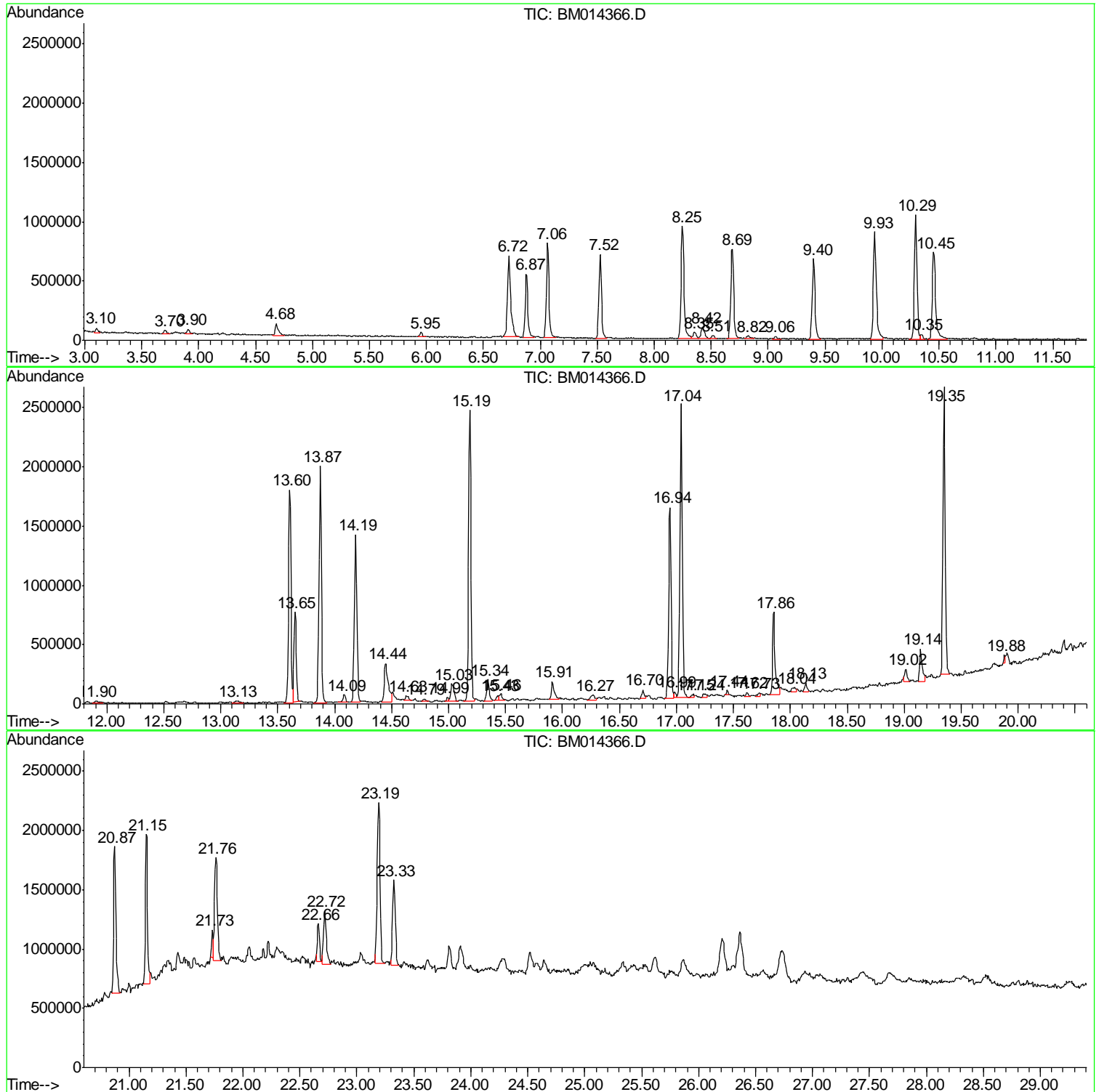
Sum of corrected areas: 50786473

Data Path : \\74.0.250.170\SVOASRV\HPCHEM1\BNA_M\DATA\BM022618\
 Data File : BM014366.D
 Acq On : 26 Feb 2018 21:00
 Operator : SJ/JU
 Sample : J1631-19
 Misc :
 ALS Vial : 17 Sample Multiplier: 1

Instrument :
 BNA_M
 ClientSampleId :
 BE607

Quant Method : Z:\HPCHEM1\BNA_M\METHODS\SOM-EPA-BM021418.M
 Quant Title : SVOA CALIBRATION

TIC Library : C:\DATABASE\NIST11.L
 TIC Integration Parameters: LSCINT.P



Data Path : \\74.0.250.170\SVOASRV\HPCHEM1\BNA_M\DATA\BM022618\
 Data File : BM014366.D
 Acq On : 26 Feb 2018 21:00
 Operator : SJ/JU
 Sample : J1631-19
 Misc :
 ALS Vial : 17 Sample Multiplier: 1

Instrument :
 BNA_M
 ClientSampleID :
 BE607

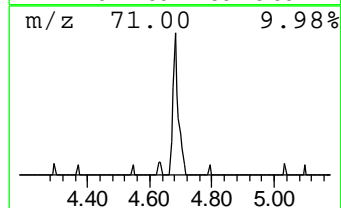
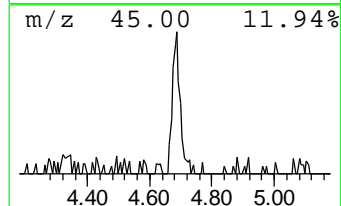
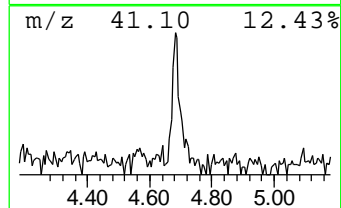
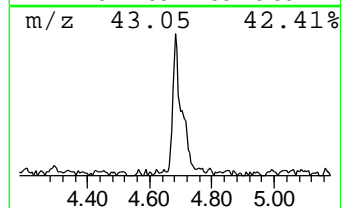
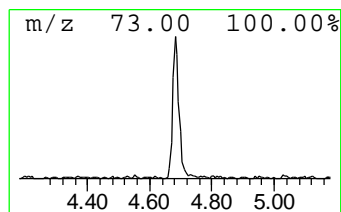
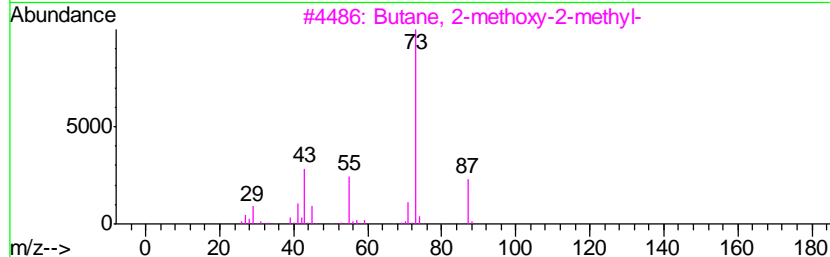
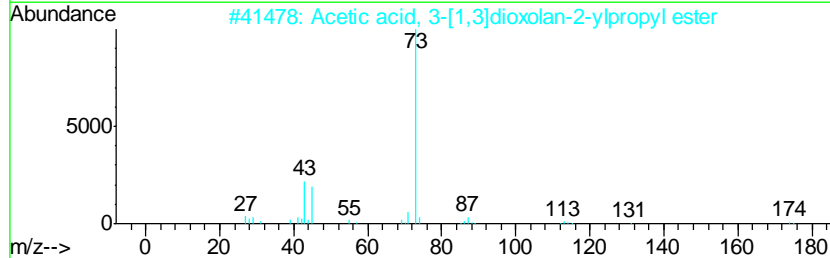
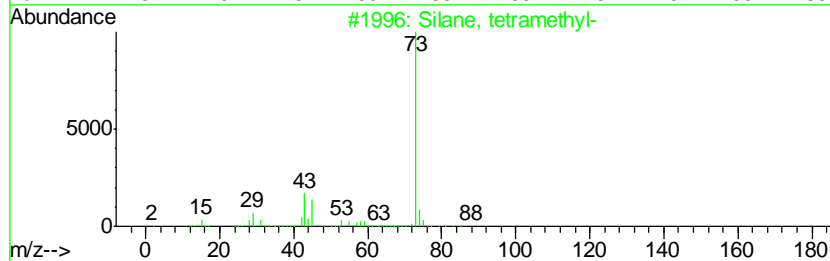
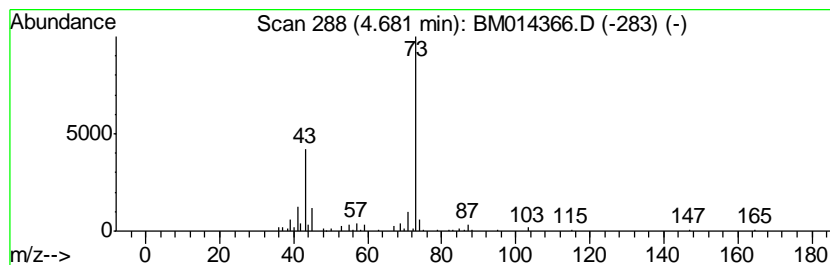
Quant Method : Z:\HPCHEM1\BNA_M\METHODS\SOM-EPA-BM021418.M
 Quant Title : SVOA CALIBRATION

TIC Library : C:\DATABASE\NIST11.L
 TIC Integration Parameters: LSCINT.P

 Peak Number 1 unknown-01 Concentration Rank 8

R.T.	EstConc	Area	Relative to ISTD	R.T.
4.68	3.20 ng/ul	188473	1,4-Dichlorobenzene-d4	7.52

Hit#	of	Tentative ID	MW	MolForm	CAS#	Qual
1	5	Silane, tetramethyl-	88	C4H12Si	000075-76-3	46
2		Acetic acid, 3-[1,3]dioxolan-2-y...	174	C8H14O4	1000186-02-3	38
3		Butane, 2-methoxy-2-methyl-	102	C6H14O	000994-05-8	37
4		Silane, tetramethyl-	88	C4H12Si	000075-76-3	35
5		Silane, tetramethyl-	88	C4H12Si	000075-76-3	32



Data Path : \\74.0.250.170\SVOASRV\HPCHEM1\BNA_M\DATA\BM022618\
 Data File : BM014366.D
 Acq On : 26 Feb 2018 21:00
 Operator : SJ/JU
 Sample : J1631-19
 Misc :
 ALS Vial : 17 Sample Multiplier: 1

Instrument :
 BNA_M
 ClientSampled :
 BE607

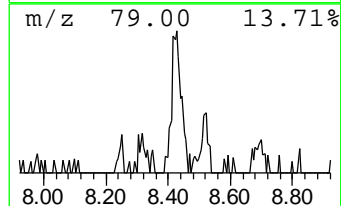
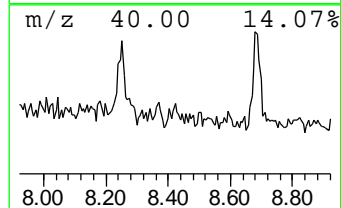
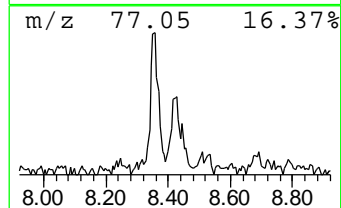
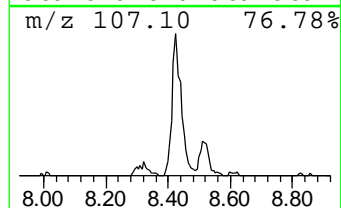
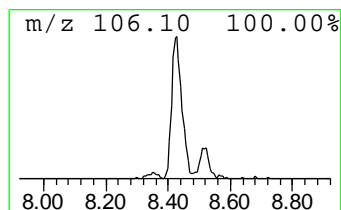
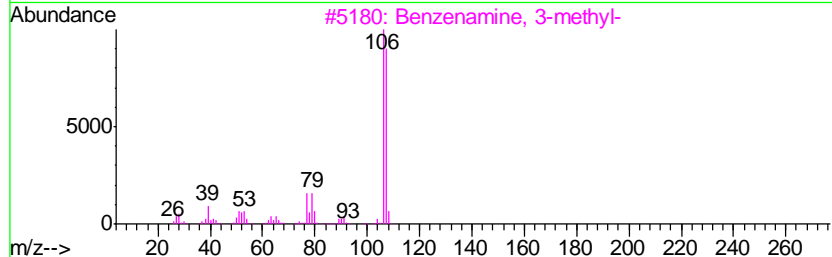
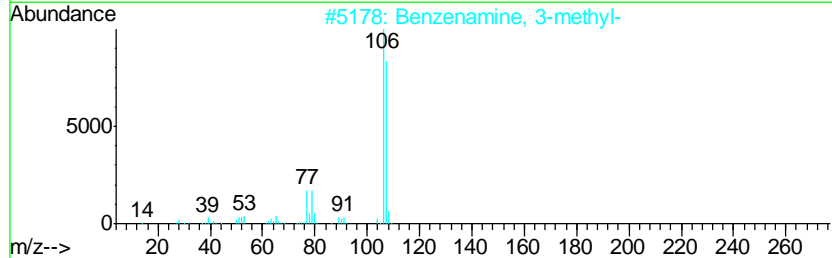
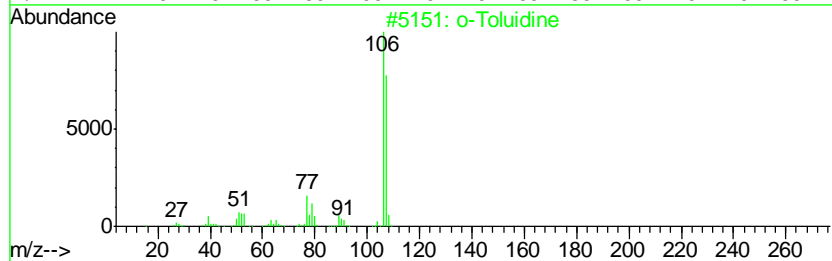
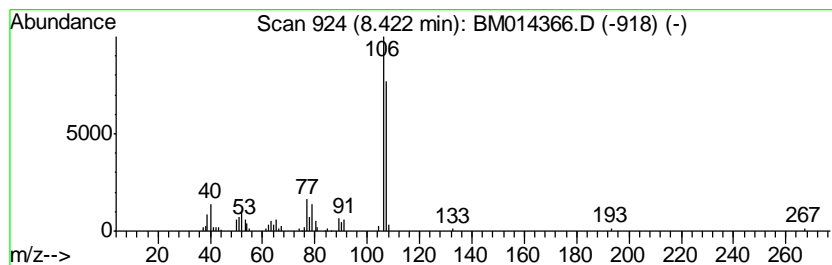
Quant Method : Z:\HPCHEM1\BNA_M\METHODS\SOM-EPA-BM021418.M
 Quant Title : SVOA CALIBRATION

TIC Library : C:\DATABASE\NIST11.L
 TIC Integration Parameters: LSCINT.P

 Peak Number 2 o-Toluidine Concentration Rank 7

R.T.	EstConc	Area	Relative to ISTD	R.T.
8.42	3.63 ng/ul	213598	1,4-Dichlorobenzene-d4	7.52

Hit#	of	Tentative ID	MW	MolForm	CAS#	Qual
1	5	o-Toluidine	107	C7H9N	000095-53-4	90
2		Benzenamine, 3-methyl-	107	C7H9N	000108-44-1	90
3		Benzenamine, 3-methyl-	107	C7H9N	000108-44-1	90
4		Benzenamine, 3-methyl-	107	C7H9N	000108-44-1	90
5		o-Toluidine	107	C7H9N	000095-53-4	87



Data Path : \\74.0.250.170\SVOASRV\HPCHEM1\BNA_M\DATA\BM022618\
 Data File : BM014366.D
 Acq On : 26 Feb 2018 21:00
 Operator : SJ/JU
 Sample : J1631-19
 Misc :
 ALS Vial : 17 Sample Multiplier: 1

Instrument :
 BNA_M
 ClientSampleID :
 BE607

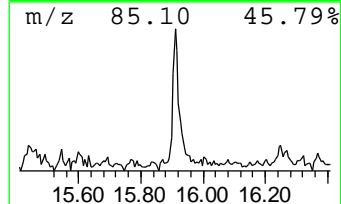
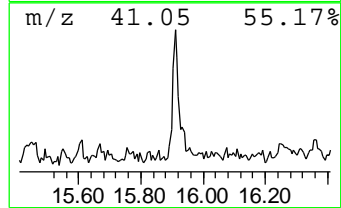
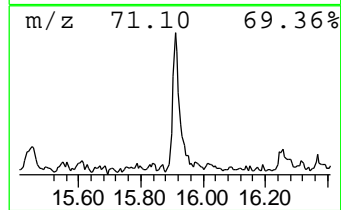
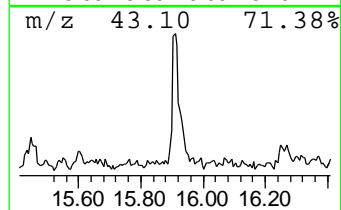
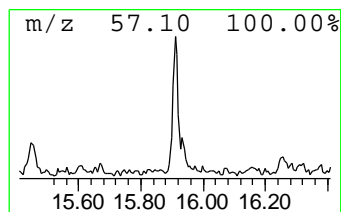
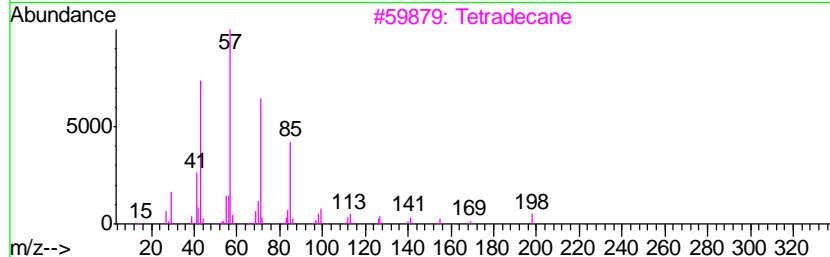
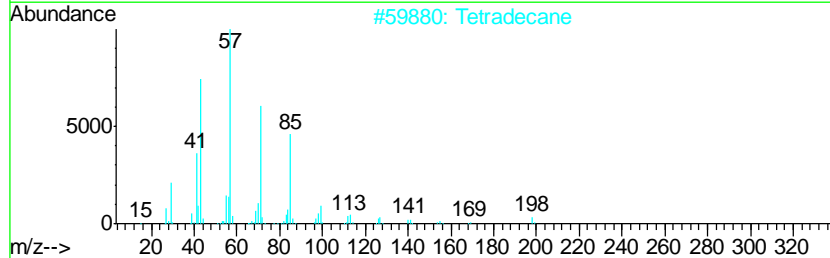
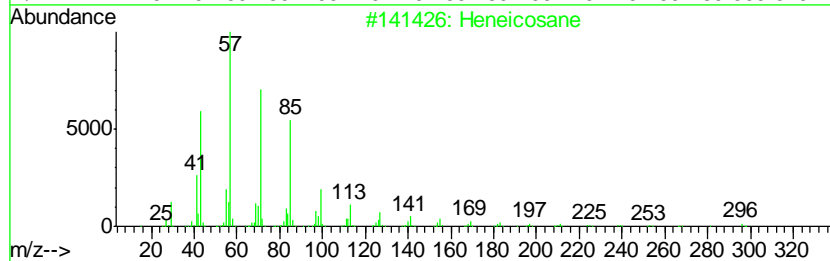
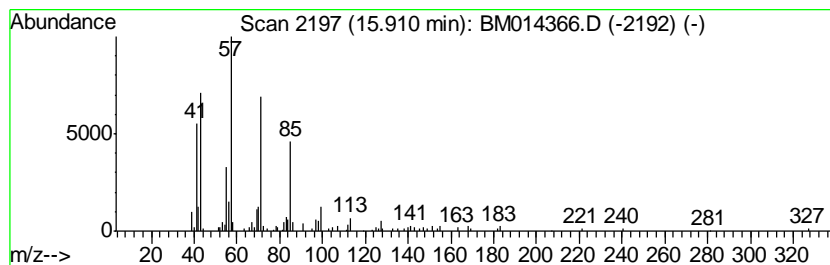
Quant Method : Z:\HPCHEM1\BNA_M\METHODS\SOM-EPA-BM021418.M
 Quant Title : SVOA CALIBRATION

TIC Library : C:\DATABASE\NIST11.L
 TIC Integration Parameters: LSCINT.P

 Peak Number 3 (DEL) Alkane: Straight-Chai... Concentration Rank 10

R.T.	EstConc	Area	Relative to ISTD	R.T.
15.91	2.31 ng/ul	268453	Phenanthrene-d10	16.94

Hit#	of	Tentative ID	MW	MolForm	CAS#	Qual
1	5	Heneicosane	296	C21H44	000629-94-7	91
2		Tetradecane	198	C14H30	000629-59-4	91
3		Tetradecane	198	C14H30	000629-59-4	91
4		Sulfurous acid, 2-propyl tetrade...	320	C17H36O3S	1000309-12-5	90
5		Nonadecane	268	C19H40	000629-92-5	90



Data Path : \\74.0.250.170\SVOASRV\HPCHEM1\BNA_M\DATA\BM022618\
 Data File : BM014366.D
 Acq On : 26 Feb 2018 21:00
 Operator : SJ/JU
 Sample : J1631-19
 Misc :
 ALS Vial : 17 Sample Multiplier: 1

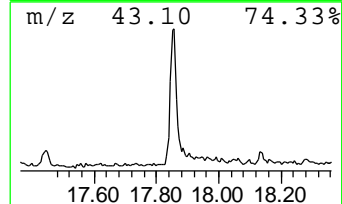
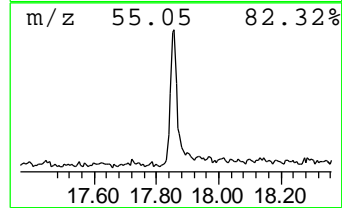
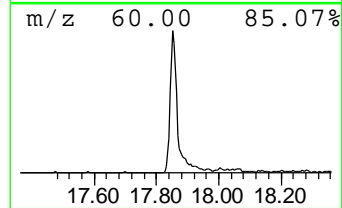
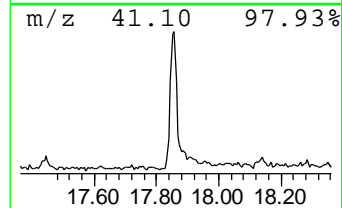
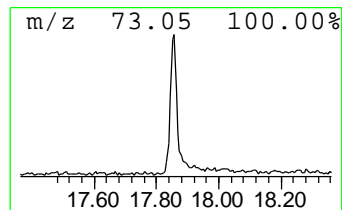
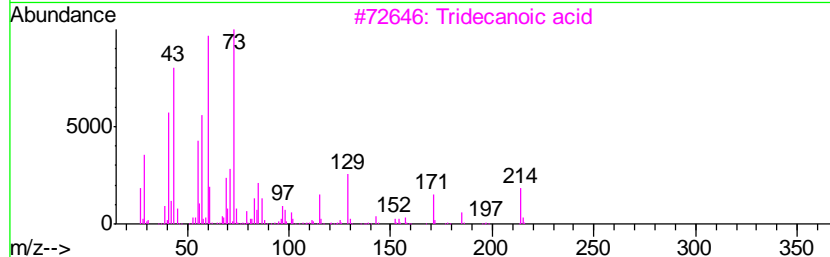
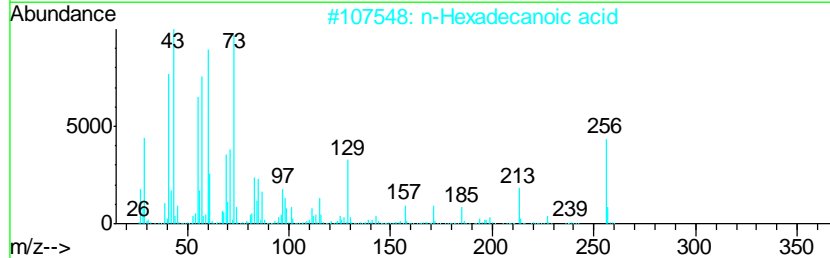
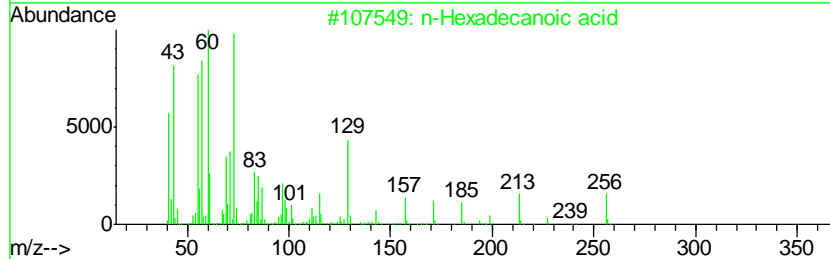
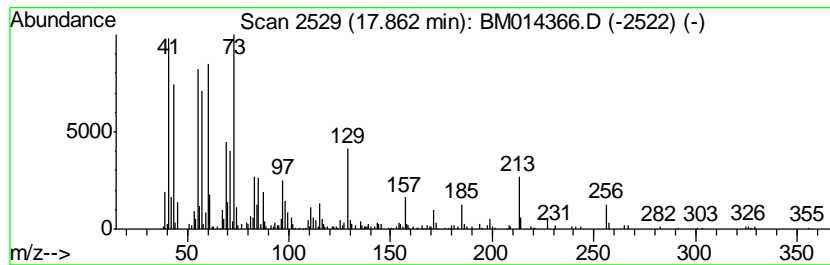
Instrument :
 BNA_M
 ClientSampleID :
 BE607

Quant Method : Z:\HPCHEM1\BNA_M\METHODS\SOM-EPA-BM021418.M
 Quant Title : SVOA CALIBRATION

TIC Library : C:\DATABASE\NIST11.L
 TIC Integration Parameters: LSCINT.P

 Peak Number 4 n-Hexadecanoic acid Concentration Rank 4

R.T.	EstConc	Area	Relative to ISTD	R.T.		
17.86	9.97 ng/ul	1158280	Phenanthrene-d10	16.94		
Hit# of	5	Tentative ID	MW	MolForm	CAS#	Qual
1		n-Hexadecanoic acid	256	C16H32O2	000057-10-3	99
2		n-Hexadecanoic acid	256	C16H32O2	000057-10-3	97
3		Tridecanoic acid	214	C13H26O2	000638-53-9	90
4		Tridecanoic acid	214	C13H26O2	000638-53-9	89
5		Pentadecanoic acid	242	C15H30O2	001002-84-2	83



Data Path : \\74.0.250.170\SVOASRV\HPCHEM1\BNA_M\DATA\BM022618\
 Data File : BM014366.D
 Acq On : 26 Feb 2018 21:00
 Operator : SJ/JU
 Sample : J1631-19
 Misc :
 ALS Vial : 17 Sample Multiplier: 1

Instrument :
 BNA_M
 ClientSampleID :
 BE607

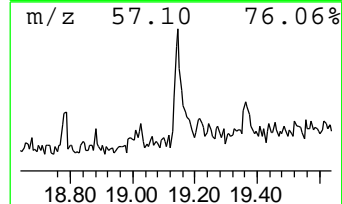
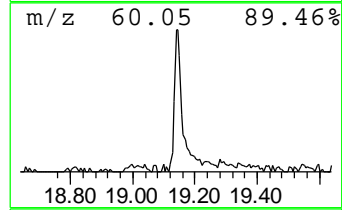
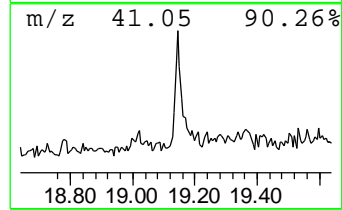
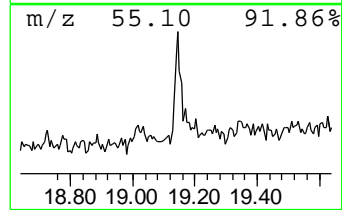
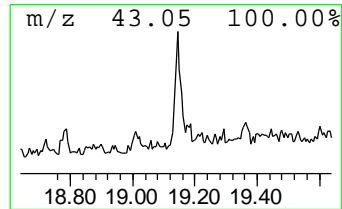
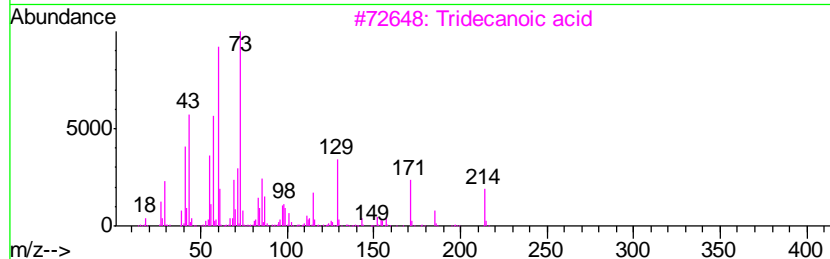
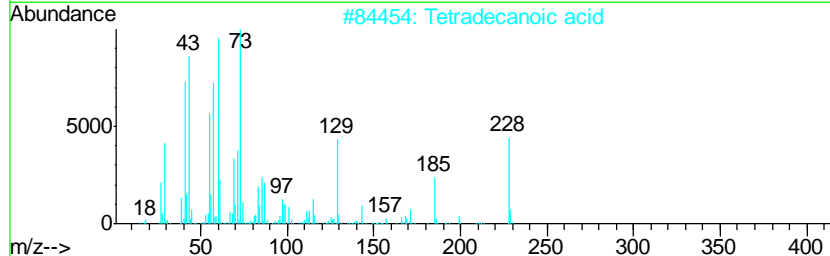
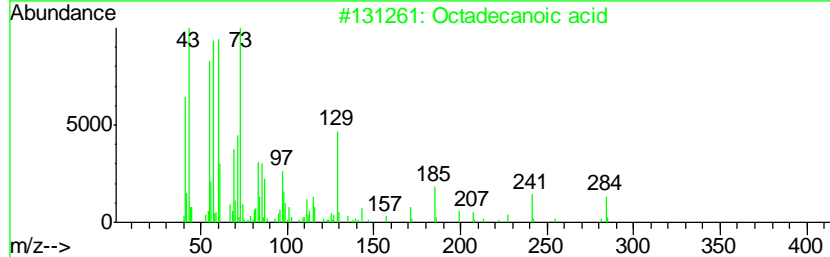
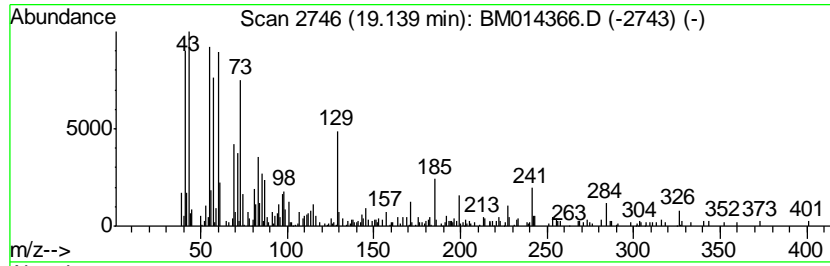
Quant Method : Z:\HPCHEM1\BNA_M\METHODS\SOM-EPA-BM021418.M
 Quant Title : SVOA CALIBRATION

TIC Library : C:\DATABASE\NIST11.L
 TIC Integration Parameters: LSCINT.P

 Peak Number 5 Octadecanoic acid Concentration Rank 6

R.T.	EstConc	Area	Relative to ISTD	R.T.
19.14	5.06 ng/ul	441416	Chrysene-d12	21.16

Hit#	of	Tentative ID	MW	MolForm	CAS#	Qual
1	5	Octadecanoic acid	284	C18H36O2	000057-11-4	93
2		Tetradecanoic acid	228	C14H28O2	000544-63-8	83
3		Tridecanoic acid	214	C13H26O2	000638-53-9	78
4		Octadecanoic acid	284	C18H36O2	000057-11-4	70
5		Octadecanoic acid	284	C18H36O2	000057-11-4	70



Data Path : \\74.0.250.170\SVOASRV\HPCHEM1\BNA_M\DATA\BM022618\
 Data File : BM014366.D
 Acq On : 26 Feb 2018 21:00
 Operator : SJ/JU
 Sample : J1631-19
 Misc :
 ALS Vial : 17 Sample Multiplier: 1

Instrument :
 BNA_M
 ClientSampleID :
 BE607

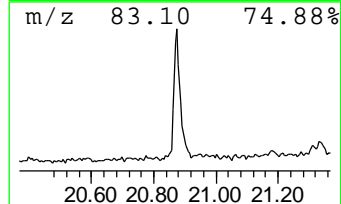
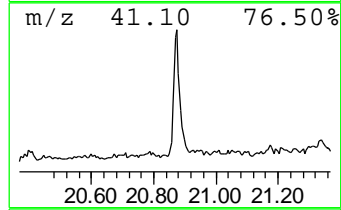
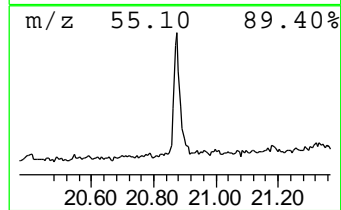
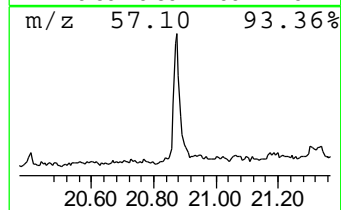
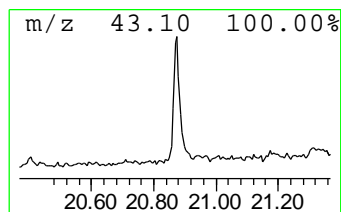
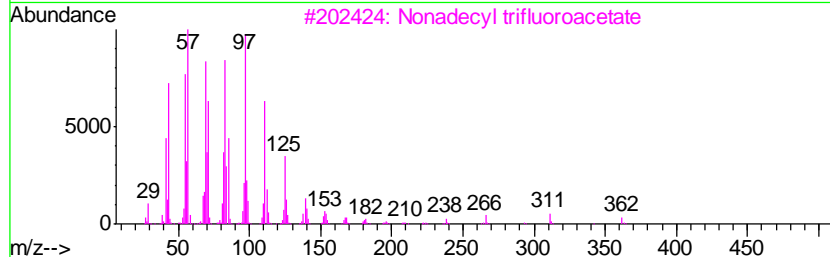
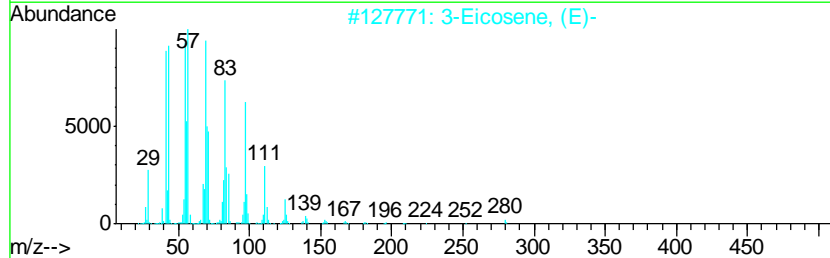
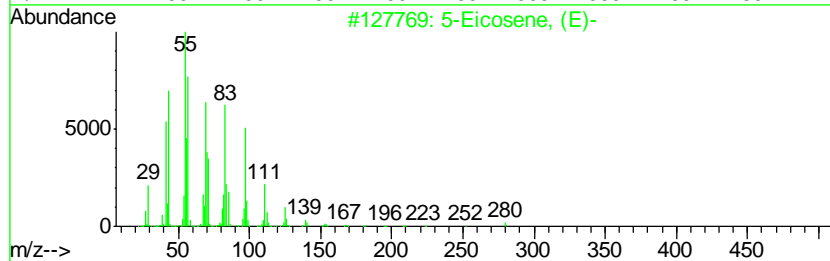
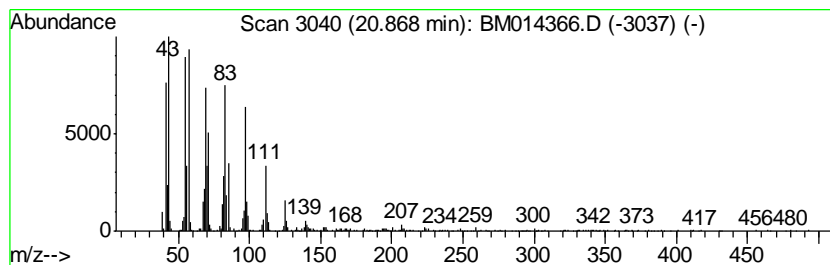
Quant Method : Z:\HPCHEM1\BNA_M\METHODS\SOM-EPA-BM021418.M
 Quant Title : SVOA CALIBRATION

TIC Library : C:\DATABASE\NIST11.L
 TIC Integration Parameters: LSCINT.P

 Peak Number 6 (DEL) Alkane: Cyclic20.87 Concentration Rank 1

R.T.	EstConc	Area	Relative to ISTD	R.T.
20.87	19.74 ng/ul	1723820	Chrysene-d12	21.16

Hit#	of	Tentative ID	MW	MolForm	CAS#	Qual
1	5	5-Eicosene, (E)-	280	C20H40	074685-30-6	94
2		3-Eicosene, (E)-	280	C20H40	074685-33-9	92
3		Nonadecyl trifluoroacetate	380	C21H39F3O2	1000351-76-3	91
4		Z-14-Nonacosane	406	C29H58	1000131-18-9	89
5		E-15-Heptadecenal	252	C17H32O	1000130-97-9	86



Data Path : \\74.0.250.170\SVOASRV\HPCHEM1\BNA_M\DATA\BM022618\
 Data File : BM014366.D
 Acq On : 26 Feb 2018 21:00
 Operator : SJ/JU
 Sample : J1631-19
 Misc :
 ALS Vial : 17 Sample Multiplier: 1

Instrument :
 BNA_M
 ClientSampled :
 BE607

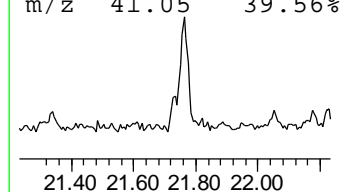
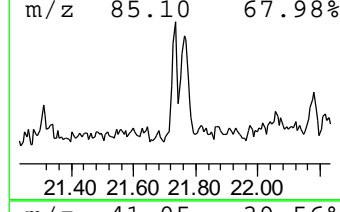
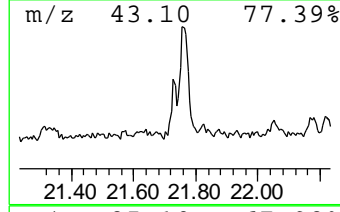
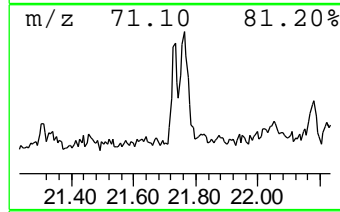
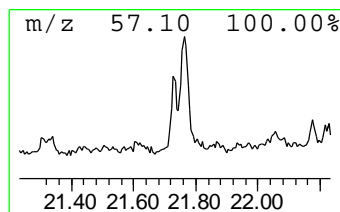
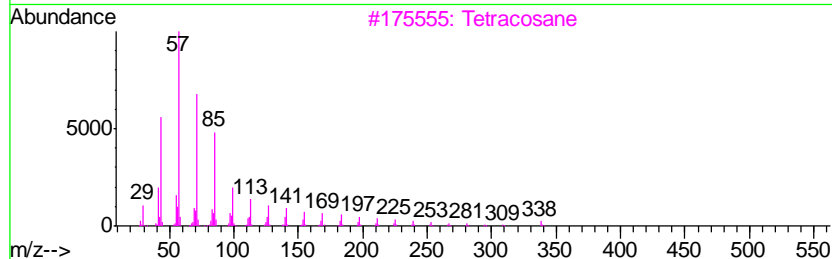
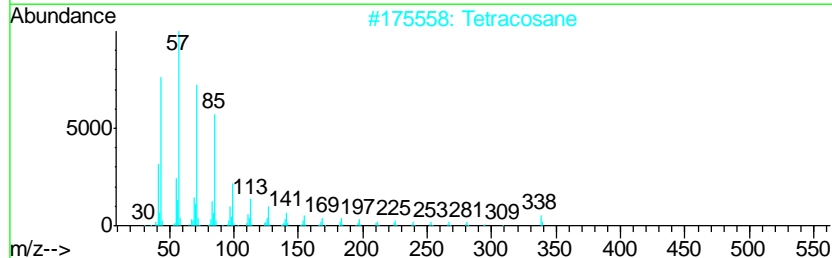
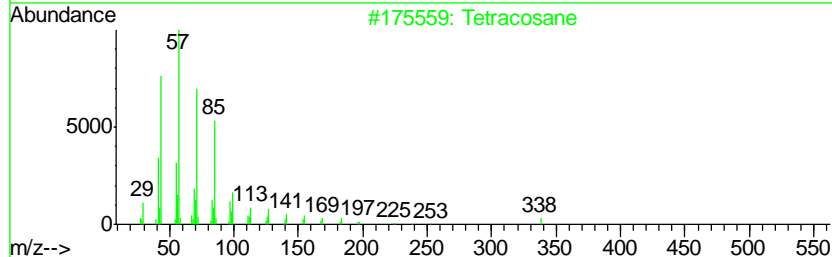
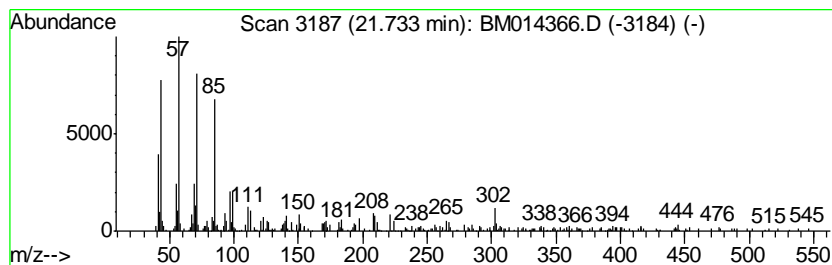
Quant Method : Z:\HPCHEM1\BNA_M\METHODS\SOM-EPA-BM021418.M
 Quant Title : SVOA CALIBRATION

TIC Library : C:\DATABASE\NIST11.L
 TIC Integration Parameters: LSCINT.P

 Peak Number 7 (DEL) Alkane: Straight-Chai... Concentration Rank 9

R.T.	EstConc	Area	Relative to ISTD	R.T.
21.73	2.82 ng/ul	246459	Chrysene-d12	21.16

Hit#	of	Tentative ID	MW	MolForm	CAS#	Qual
1	5	Tetracosane	338	C24H50	000646-31-1	81
2		Tetracosane	338	C24H50	000646-31-1	81
3		Tetracosane	338	C24H50	000646-31-1	74
4		Tetracosane	338	C24H50	000646-31-1	72
5		Octacosane	394	C28H58	000630-02-4	72



Data Path : \\74.0.250.170\SVOASRV\HPCHEM1\BNA_M\DATA\BM022618\
 Data File : BM014366.D
 Acq On : 26 Feb 2018 21:00
 Operator : SJ/JU
 Sample : J1631-19
 Misc :
 ALS Vial : 17 Sample Multiplier: 1

Instrument :
 BNA_M
 ClientSampled :
 BE607

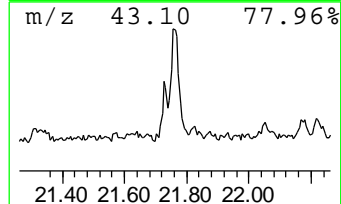
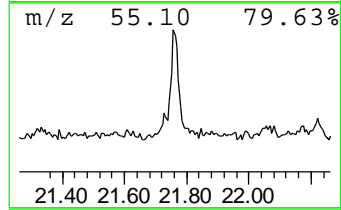
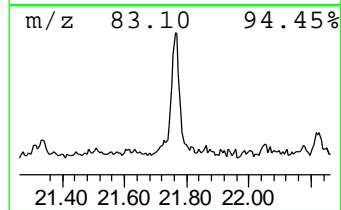
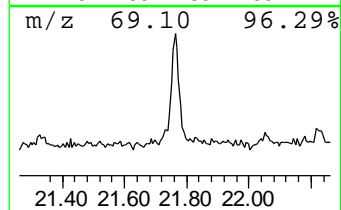
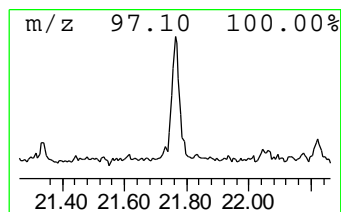
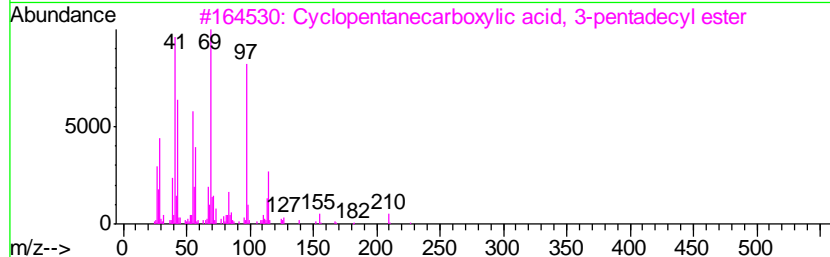
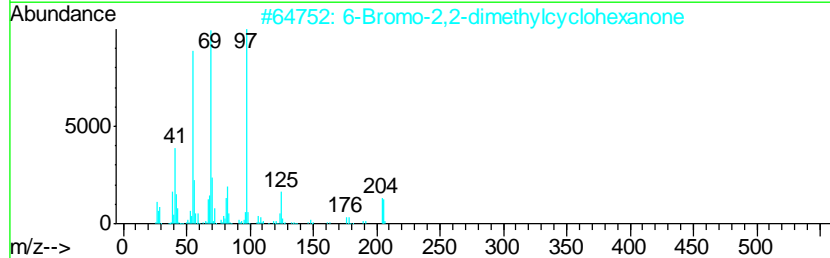
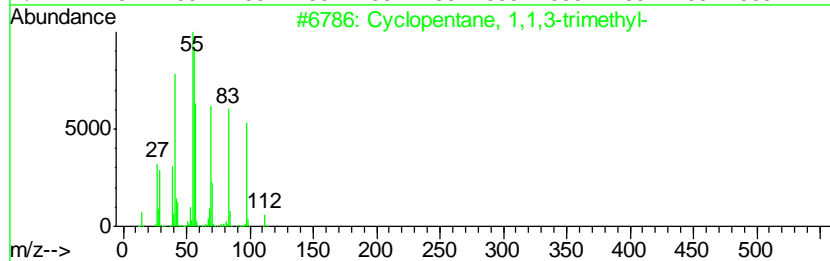
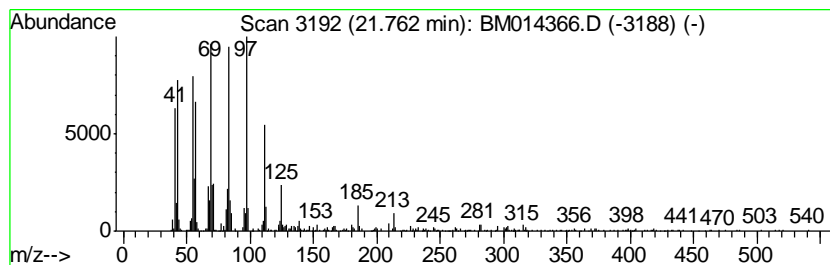
Quant Method : Z:\HPCHEM1\BNA_M\METHODS\SOM-EPA-BM021418.M
 Quant Title : SVOA CALIBRATION

TIC Library : C:\DATABASE\NIST11.L
 TIC Integration Parameters: LSCINT.P

 Peak Number 8 (DEL) Alkane: Cyclic21.76 Concentration Rank 2

R.T.	EstConc	Area	Relative to ISTD	R.T.
21.76	17.53 ng/ul	1530370	Chrysene-d12	21.16

Hit#	of	Tentative ID	MW	MolForm	CAS#	Qual
1	5	Cyclopentane, 1,1,3-trimethyl-	112	C8H16	004516-69-2	46
2		6-Bromo-2,2-dimethylcyclohexanone	204	C8H13BrO	021690-26-6	46
3		Cyclopentanecarboxylic acid, 3-p...	324	C21H40O2	1000280-59-1	43
4		1-Heneicosanol	312	C21H44O	015594-90-8	30
5		Cyclohexane, (1,2-dimethylbutyl)-	168	C12H24	061142-37-8	27



Data Path : \\74.0.250.170\SVOASRV\HPCHEM1\BNA_M\DATA\BM022618\
 Data File : BM014366.D
 Acq On : 26 Feb 2018 21:00
 Operator : SJ/JU
 Sample : J1631-19
 Misc :
 ALS Vial : 17 Sample Multiplier: 1

Instrument :
 BNA_M
 ClientSampled :
 BE607

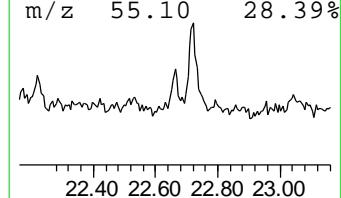
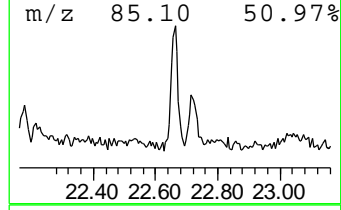
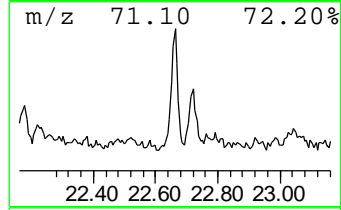
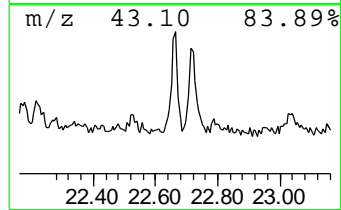
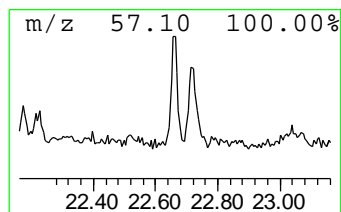
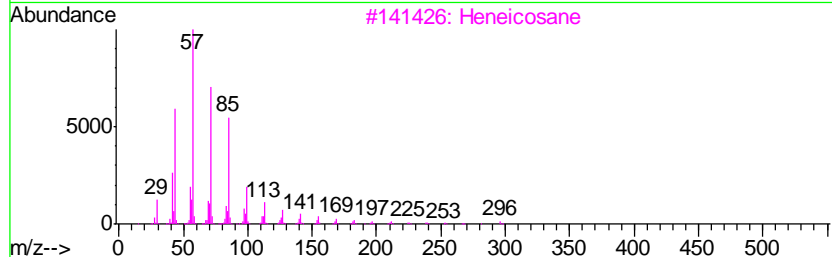
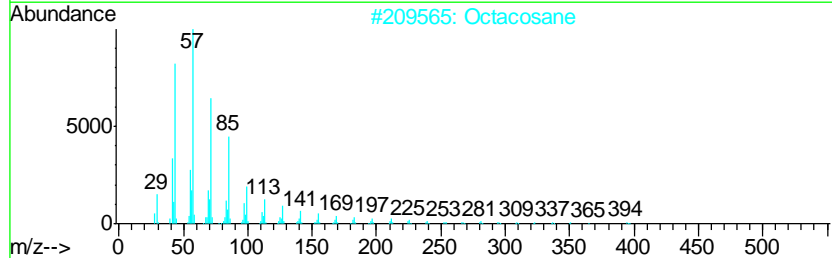
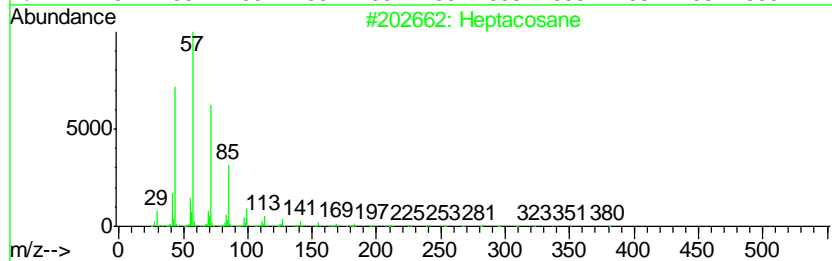
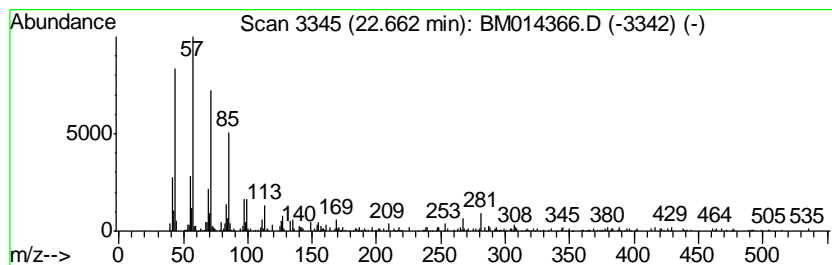
Quant Method : Z:\HPCHEM1\BNA_M\METHODS\SOM-EPA-BM021418.M
 Quant Title : SVOA CALIBRATION

TIC Library : C:\DATABASE\NIST11.L
 TIC Integration Parameters: LSCINT.P

 Peak Number 9 (DEL) Alkane: Straight-Chai... Concentration Rank 5

R.T.	EstConc	Area	Relative to ISTD	R.T.
22.66	6.25 ng/ul	394186	Perylene-d12	23.33

Hit#	of	Tentative ID	MW	MolForm	CAS#	Qual
1	5	Heptacosane	380	C27H56	000593-49-7	93
2		Octacosane	394	C28H58	000630-02-4	89
3		Heneicosane	296	C21H44	000629-94-7	89
4		Heptacosane	380	C27H56	000593-49-7	89
5		Nonadecane	268	C19H40	000629-92-5	76



Data Path : \\74.0.250.170\SVOASRV\HPCHEM1\BNA_M\DATA\BM022618\
 Data File : BM014366.D
 Acq On : 26 Feb 2018 21:00
 Operator : SJ/JU
 Sample : J1631-19
 Misc :
 ALS Vial : 17 Sample Multiplier: 1

Instrument :
 BNA_M
 ClientSampled :
 BE607

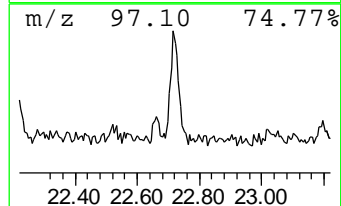
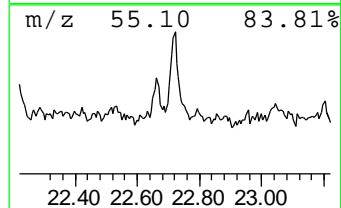
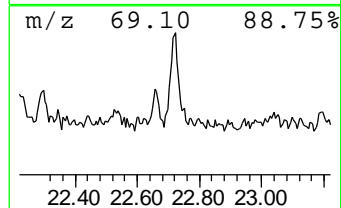
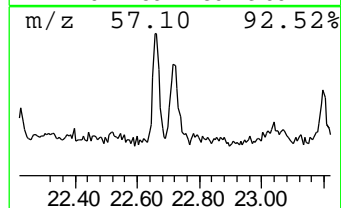
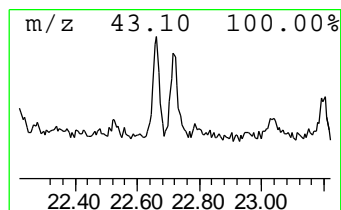
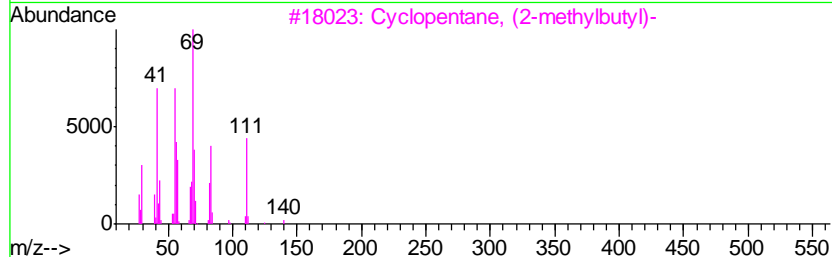
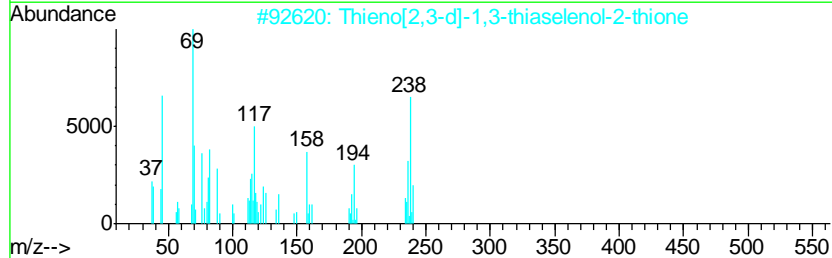
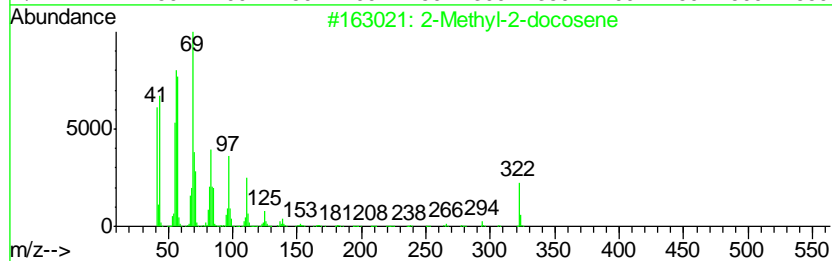
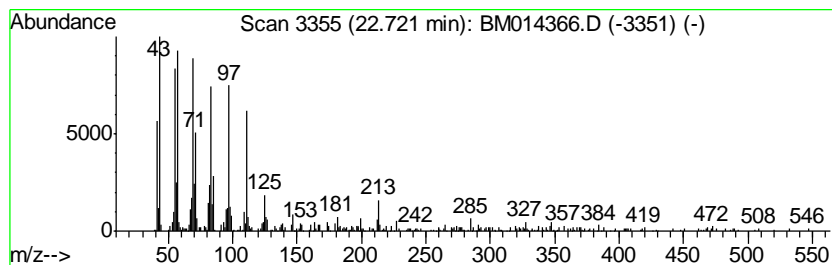
Quant Method : Z:\HPCHEM1\BNA_M\METHODS\SOM-EPA-BM021418.M
 Quant Title : SVOA CALIBRATION

TIC Library : C:\DATABASE\NIST11.L
 TIC Integration Parameters: LSCINT.P

 Peak Number 10 (DEL) Alkane: Cyclic22.72 Concentration Rank 3

R.T.	EstConc	Area	Relative to ISTD	R.T.
22.72	12.41 ng/ul	783169	Perylene-d12	23.33

Hit#	of	Tentative ID	MW	MolForm	CAS#	Qual
1	5	2-Methyl-2-docosene	322	C23H46	1000131-16-9	58
2		Thieno[2,3-d]-1,3-thiaselenol-2-...	238	C5H2S3Se	081803-09-0	56
3		Cyclopentane, (2-methylbutyl)-	140	C10H20	053366-38-4	38
4		2-Heptafluorobutyroxyptadecane	424	C19H31F7O2	1000245-50-0	30
5		1-Heneicosanol	312	C21H44O	015594-90-8	25



Data Path : \\74.0.250.170\SVOASRV\HPCHEM1\BNA_M\DATA\BM022618\
 Data File : BM014366.D
 Acq On : 26 Feb 2018 21:00
 Operator : SJ/JU
 Sample : J1631-19
 Misc :
 ALS Vial : 17 Sample Multiplier: 1

Instrument :
 BNA_M
 ClientSampleId :
 BE607

Quant Method : Z:\HPCHEM1\BNA_M\METHODS\SOM-EPA-BM021418.M
 Quant Title : SVOA CALIBRATION

TIC Library : C:\DATABASE\NIST11.L
 TIC Integration Parameters: LSCINT.P

TIC Top Hit name	RT	EstConc	Units	Response	--Internal Standard--			
					#	RT	Resp	Conc
unknown-01	4.68	3.2	ng/ul	188473	1	7.52	1177970	20.0
o-Toluidine	8.42	3.6	ng/ul	213598	1	7.52	1177970	20.0
(DEL) Alkane: Str...	15.91	2.3	ng/ul	268453	4	16.94	2322680	20.0
n-Hexadecanoic acid	17.86	10.0	ng/ul	1158280	4	16.94	2322680	20.0
Octadecanoic acid	19.14	5.1	ng/ul	441416	5	21.16	1746400	20.0
(DEL) Alkane: Cyc...	20.87	19.7	ng/ul	1723820	5	21.16	1746400	20.0
(DEL) Alkane: Str...	21.73	2.8	ng/ul	246459	5	21.16	1746400	20.0
(DEL) Alkane: Cyc...	21.76	17.5	ng/ul	1530370	5	21.16	1746400	20.0
(DEL) Alkane: Str...	22.66	6.3	ng/ul	394186	6	23.33	1262100	20.0
(DEL) Alkane: Cyc...	22.72	12.4	ng/ul	783169	6	23.33	1262100	20.0