

Data Path : \\74.0.250.170\SVOASRV\HPCHEM1\BNA_M\DATA\BM022618\
 Data File : BM014367.D
 Acq On : 26 Feb 2018 21:36
 Operator : SJ/JU
 Sample : J1631-07
 Misc :
 ALS Vial : 18 Sample Multiplier: 1

Instrument :
 BNA_M
 ClientSampleId :
 BE5Y8

Integration Parameters: LSCINT.P

Integrator: RTE
 Smoothing : OFF Filtering: 5
 Sampling : 1 Min Area: 1 % of largest Peak
 Start Thrs: 0.2 Max Peaks: 100
 Stop Thrs : 0 Peak Location: TOP

If leading or trailing edge < 100 prefer < Baseline drop else tangent >
 Peak separation: 5

Method : Z:\HPCHEM1\BNA_M\METHODS\SOM-EPA-BM021418.M
 Title : SVOA CALIBRATION

Signal : TIC

peak #	R.T. min	first scan	max scan	last scan	PK TY	peak height	corr. area	corr. % max.	% of total
1	4.681	283	288	299	rVB2	126571	253371	1.77%	0.183%
2	4.887	318	323	331	rVB	255499	397096	2.78%	0.287%
3	6.722	630	635	651	rVB	719963	1393409	9.75%	1.008%
4	6.875	656	661	671	rBV	578452	967606	6.77%	0.700%
5	7.063	687	693	702	rBV	852134	1389825	9.73%	1.006%
6	7.169	708	711	716	rVB	106455	156313	1.09%	0.113%
7	7.522	766	771	776	rBV	704199	1128710	7.90%	0.817%
8	7.869	824	830	840	rVB	272280	467693	3.27%	0.338%
9	8.151	873	878	888	rBV5	86791	180785	1.27%	0.131%
10	8.245	888	894	903	rBV	790677	1426200	9.98%	1.032%
11	8.351	909	912	919	rVB2	107364	181974	1.27%	0.132%
12	8.681	962	968	974	rBV	863003	1469934	10.29%	1.064%
13	9.398	1079	1090	1098	rBV	782858	1388915	9.72%	1.005%
14	9.939	1175	1182	1202	rBV	922784	1894838	13.26%	1.371%
15	10.292	1231	1242	1248	rBV	1067860	1810582	12.67%	1.310%
16	10.345	1248	1251	1262	rVB	124743	227502	1.59%	0.165%
17	10.457	1262	1270	1285	rBV	330545	787843	5.51%	0.570%
18	11.969	1522	1527	1533	rVB2	93357	152697	1.07%	0.111%
19	12.998	1693	1702	1708	rBV6	81668	191516	1.34%	0.139%
20	13.492	1780	1786	1792	rBV3	96551	202599	1.42%	0.147%
21	13.604	1799	1805	1809	rBV	1875083	2569096	17.98%	1.859%
22	13.651	1809	1813	1819	rVB	1365784	1888432	13.22%	1.367%
23	13.874	1843	1851	1863	rBV	2212232	3355229	23.49%	2.428%
24	14.086	1881	1887	1892	rBV	120574	182672	1.28%	0.132%
25	14.186	1895	1904	1910	rVV2	1404710	2409930	16.87%	1.744%
26	14.245	1910	1914	1923	rVB	314237	532842	3.73%	0.386%
27	14.445	1944	1948	1964	rVB2	303703	735635	5.15%	0.532%
28	14.592	1966	1973	1977	rBV	208703	344045	2.41%	0.249%
29	14.986	2032	2040	2045	rBV3	85680	204439	1.43%	0.148%
30	15.045	2047	2050	2056	rVB	156392	187903	1.32%	0.136%
31	15.186	2068	2074	2079	rBV	2604477	3598769	25.19%	2.604%
32	15.239	2079	2083	2088	rVB	235523	344652	2.41%	0.249%
33	15.345	2095	2101	2107	rBV2	215118	405641	2.84%	0.294%
34	15.539	2129	2134	2142	rVB3	109440	204804	1.43%	0.148%

Data Path : \\74.0.250.170\SVOASRV\HPCHEM1\BNA_M\DATA\BM022618\
 Data File : BM014367.D
 Acq On : 26 Feb 2018 21:36
 Operator : SJ/JU
 Sample : J1631-07
 Misc :
 ALS Vial : 18 Sample Multiplier: 1

Instrument :
 BNA_M
 ClientSampleId :
 BE5Y8

Integration Parameters: LSCINT.P

Integrator: RTE
 Smoothing : OFF
 Sampling : 1
 Start Thrs: 0.2
 Stop Thrs : 0

Filtering: 5
 Min Area: 1 % of largest Peak
 Max Peaks: 100
 Peak Location: TOP

If leading or trailing edge < 100 prefer < Baseline drop else tangent >
 Peak separation: 5

Method : Z:\HPCHEM1\BNA_M\METHODS\SOM-EPA-BM021418.M
 Title : SVOA CALIBRATION

35	15.692	2156	2160	2166	rVB4	79956	166514	1.17%	0.121%
36	15.910	2193	2197	2205	rBV5	192368	450765	3.16%	0.326%
37	16.239	2249	2253	2258	rBV3	185307	319518	2.24%	0.231%
38	16.363	2270	2274	2279	rVB6	106185	188447	1.32%	0.136%
39	16.604	2312	2315	2320	rVB	160748	220402	1.54%	0.160%
40	16.704	2329	2332	2336	rVB3	135593	163892	1.15%	0.119%
41	16.757	2338	2341	2346	rVB	184028	251896	1.76%	0.182%
42	16.857	2355	2358	2363	rBV3	124364	147382	1.03%	0.107%
43	16.945	2366	2373	2376	rBV	1597754	2382075	16.67%	1.724%
44	16.986	2376	2380	2385	rVV	3022651	4022814	28.16%	2.911%
45	17.045	2385	2390	2393	rVV	2537642	3582725	25.08%	2.593%
46	17.074	2393	2395	2400	rVB	636224	774831	5.42%	0.561%
47	17.357	2440	2443	2451	rVB	268994	413830	2.90%	0.299%
48	17.445	2455	2458	2461	rBV2	113810	156535	1.10%	0.113%
49	17.663	2492	2495	2500	rVB7	98009	167661	1.17%	0.121%
50	17.815	2518	2521	2524	rBV	225642	277382	1.94%	0.201%
51	17.862	2524	2529	2536	rVB2	2087866	2887343	20.21%	2.090%
52	18.015	2550	2555	2559	rBV2	747524	1144424	8.01%	0.828%
53	18.304	2601	2604	2605	rBV2	155755	170490	1.19%	0.123%
54	18.380	2613	2617	2622	rVB	1082087	1399455	9.80%	1.013%
55	18.886	2699	2703	2710	rVB7	415461	820876	5.75%	0.594%
56	19.015	2720	2725	2731	rBV	4334573	5814238	40.70%	4.208%
57	19.151	2744	2748	2755	rVB3	1223875	1823220	12.76%	1.319%
58	19.351	2778	2782	2785	rBV2	2821591	4266805	29.87%	3.088%
59	19.380	2785	2787	2791	rVB	3270980	3646256	25.52%	2.639%
60	20.203	2922	2927	2931	rBV	2314111	2998993	20.99%	2.170%
61	20.292	2940	2942	2946	rBV	297697	369789	2.59%	0.268%
62	20.874	3038	3041	3047	rVB2	1130312	1518162	10.63%	1.099%
63	20.939	3050	3052	3059	rVB2	455764	589754	4.13%	0.427%
64	21.080	3071	3076	3080	rBV	13646055	14285686	100.00%	10.338%
65	21.145	3082	3087	3092	rVV2	2075366	4420407	30.94%	3.199%
66	21.192	3092	3095	3100	rVB	1666638	2063626	14.45%	1.493%
67	21.368	3121	3125	3128	rBV	4185257	5101024	35.71%	3.692%
68	21.409	3128	3132	3138	rVB	7734557	8840164	61.88%	6.397%
69	21.627	3166	3169	3176	rVB	1386339	1671833	11.70%	1.210%
70	22.668	3342	3346	3349	rBV	1485009	2742343	19.20%	1.985%
71	22.986	3395	3400	3407	rVB	2095048	3478498	24.35%	2.517%

Data Path : \\74.0.250.170\SVOASRV\HPCHEM1\BNA_M\DATA\BM022618\
 Data File : BM014367.D
 Acq On : 26 Feb 2018 21:36
 Operator : SJ/JU
 Sample : J1631-07
 Misc :
 ALS Vial : 18 Sample Multiplier: 1

Instrument :
 BNA_M
 ClientSampleId :
 BE5Y8

Integration Parameters: LSCINT.P
 Integrator: RTE
 Smoothing : OFF Filtering: 5
 Sampling : 1 Min Area: 1 % of largest Peak
 Start Thrs: 0.2 Max Peaks: 100
 Stop Thrs : 0 Peak Location: TOP

If leading or trailing edge < 100 prefer < Baseline drop else tangent >
 Peak separation: 5

Method : Z:\HPCHEM1\BNA_M\METHODS\SOM-EPA-BM021418.M
 Title : SVOA CALIBRATION

72	23.150	3424	3428	3432	rBV	710113	1216608	8.52%	0.880%
73	23.197	3432	3436	3440	rVV2	1364676	2492502	17.45%	1.804%
74	23.244	3440	3444	3450	rVB	1144298	1915673	13.41%	1.386%
75	23.333	3456	3459	3464	rVB2	628701	838114	5.87%	0.607%
76	23.486	3482	3485	3492	rVB	768537	1252725	8.77%	0.907%
77	23.821	3537	3542	3548	rVB	1342899	2474063	17.32%	1.790%
78	25.568	3832	3839	3859	rVB	3018105	8884311	62.19%	6.429%
79	26.850	4051	4057	4066	rVB2	859280	2334819	16.34%	1.690%

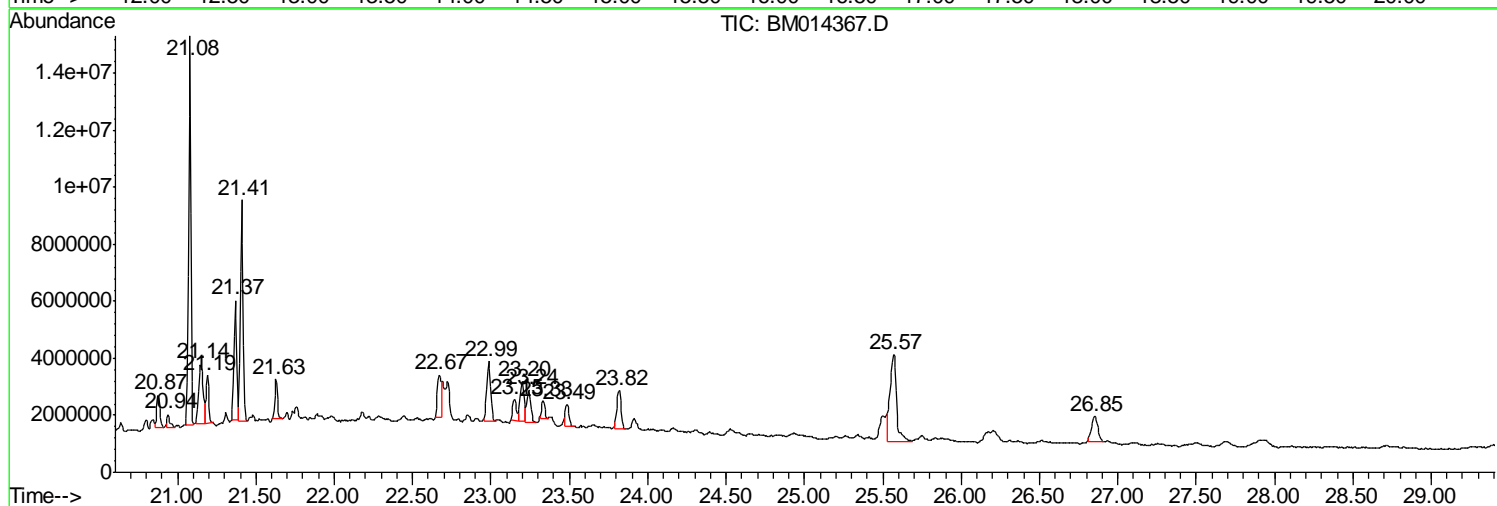
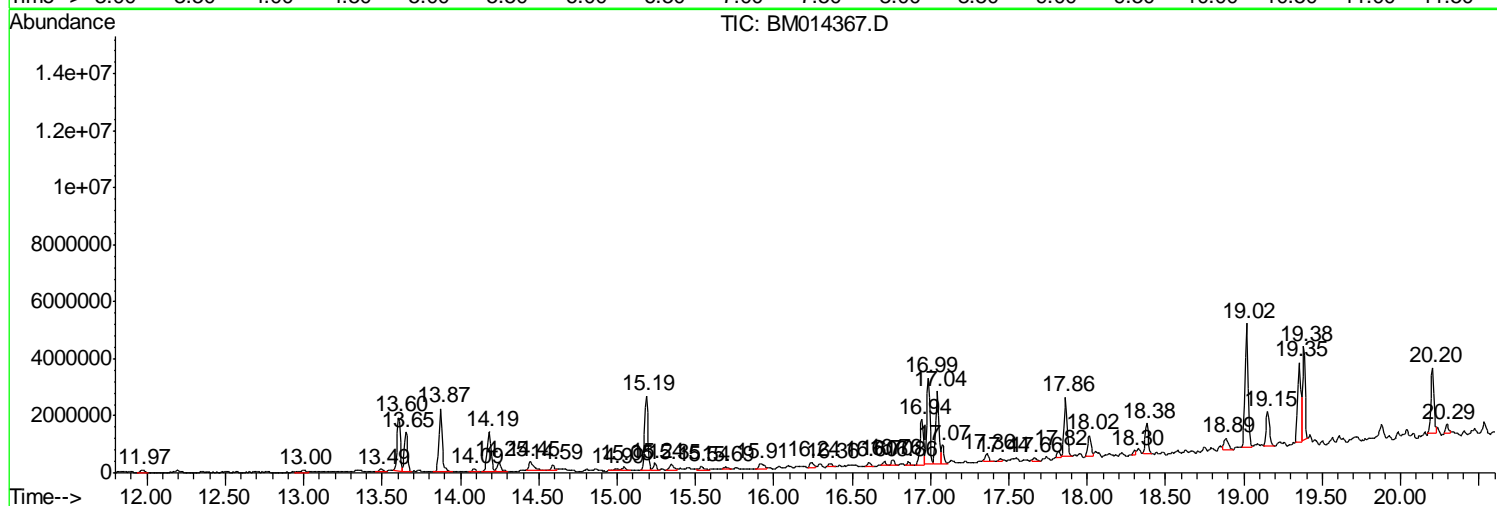
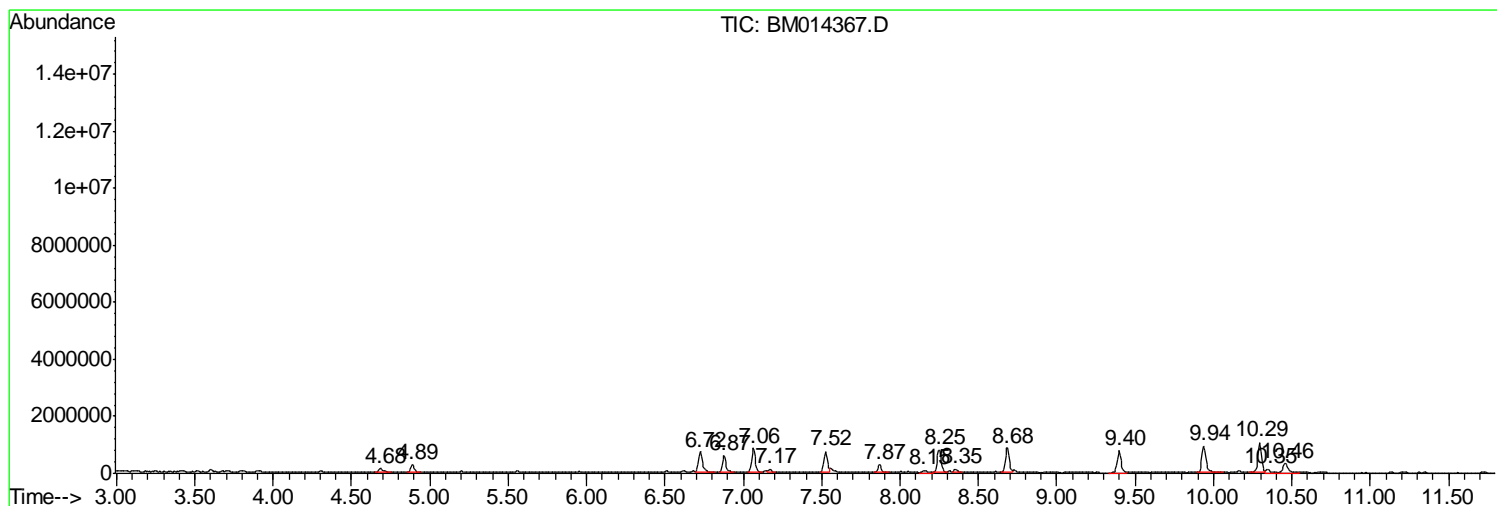
Sum of corrected areas: 138182367

Data Path : \\74.0.250.170\SVOASRV\HPCHEM1\BNA_M\DATA\BM022618\
 Data File : BM014367.D
 Acq On : 26 Feb 2018 21:36
 Operator : SJ/JU
 Sample : J1631-07
 Misc :
 ALS Vial : 18 Sample Multiplier: 1

Instrument :
 BNA_M
ClientSampleId :
 BE5Y8

Quant Method : Z:\HPCHEM1\BNA_M\METHODS\SOM-EPA-BM021418.M
 Quant Title : SVOA CALIBRATION

TIC Library : C:\DATABASE\NIST11.L
 TIC Integration Parameters: LSCINT.P



Data Path : \\74.0.250.170\SVOASRV\HPCHEM1\BNA_M\DATA\BM022618\
 Data File : BM014367.D
 Acq On : 26 Feb 2018 21:36
 Operator : SJ/JU
 Sample : J1631-07
 Misc :
 ALS Vial : 18 Sample Multiplier: 1

Instrument :
 BNA_M
 ClientSampleID :
 BE5Y8

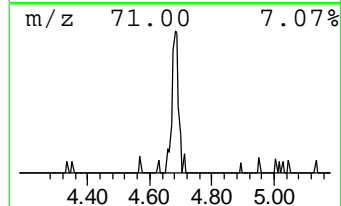
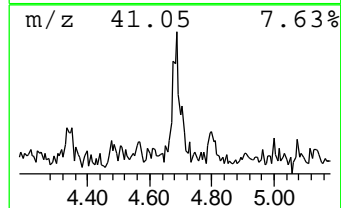
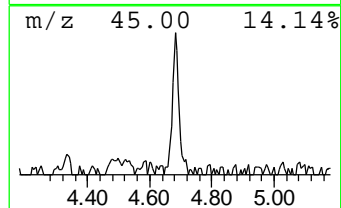
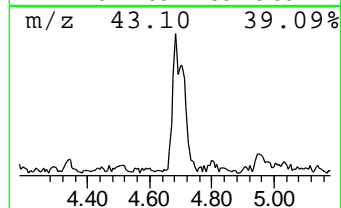
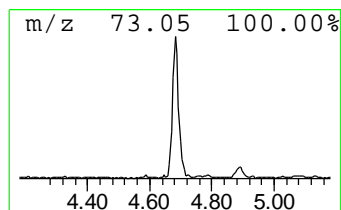
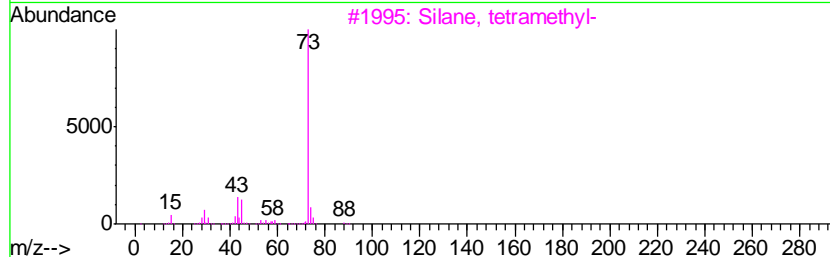
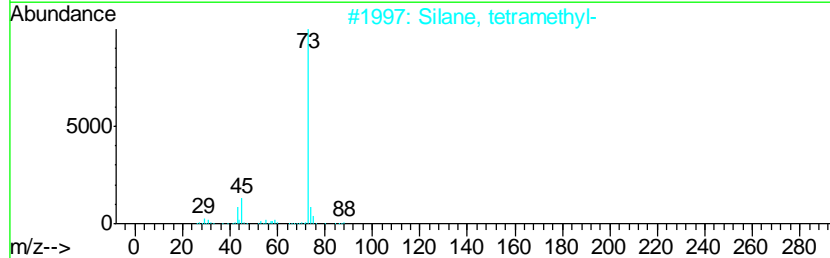
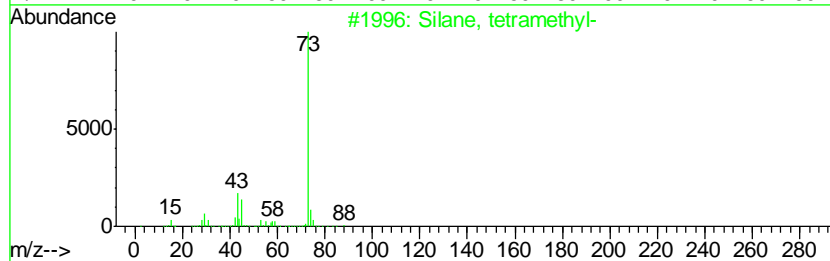
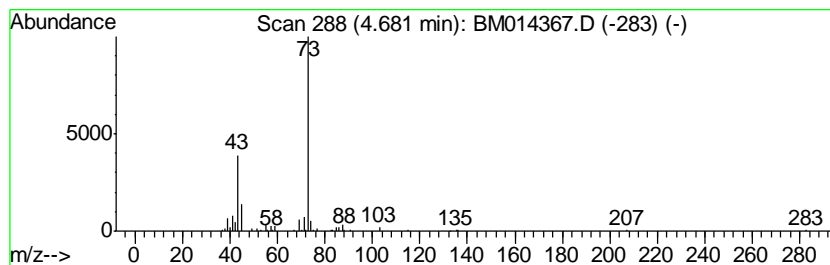
Quant Method : Z:\HPCHEM1\BNA_M\METHODS\SOM-EPA-BM021418.M
 Quant Title : SVOA CALIBRATION

TIC Library : C:\DATABASE\NIST11.L
 TIC Integration Parameters: LSCINT.P

 Peak Number 1 unknown-01 Concentration Rank 18

R.T.	EstConc	Area	Relative to ISTD	R.T.
4.68	4.49 ng/ul	253371	1,4-Dichlorobenzene-d4	7.52

Hit#	of	Tentative ID	MW	MolForm	CAS#	Qual
1	5	Silane, tetramethyl-	88	C4H12Si	000075-76-3	38
2		Silane, tetramethyl-	88	C4H12Si	000075-76-3	38
3		Silane, tetramethyl-	88	C4H12Si	000075-76-3	38
4		Methane, isothiocyanato-	73	C2H3NS	000556-61-6	36
5		1,3-Dioxolane, 2-butyl-	130	C7H14O2	004360-76-3	36



Data Path : \\74.0.250.170\SVOASRV\HPCHEM1\BNA_M\DATA\BM022618\
 Data File : BM014367.D
 Acq On : 26 Feb 2018 21:36
 Operator : SJ/JU
 Sample : J1631-07
 Misc :
 ALS Vial : 18 Sample Multiplier: 1

Instrument :
 BNA_M
 ClientSampleID :
 BE5Y8

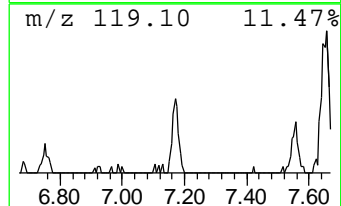
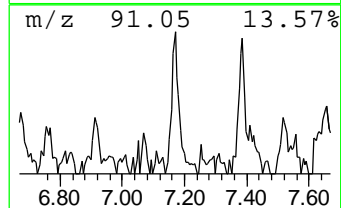
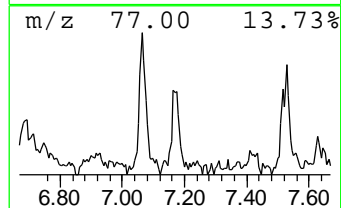
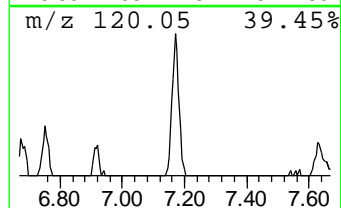
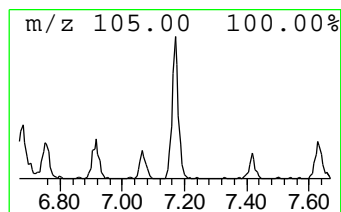
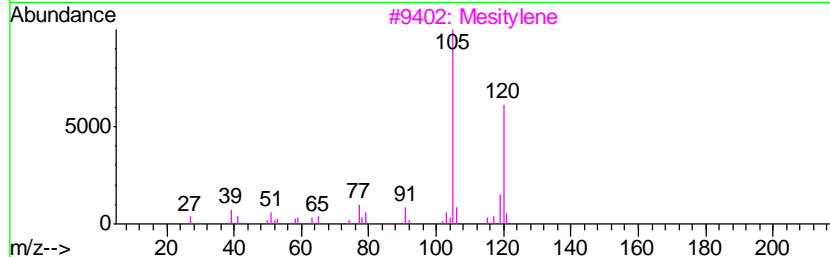
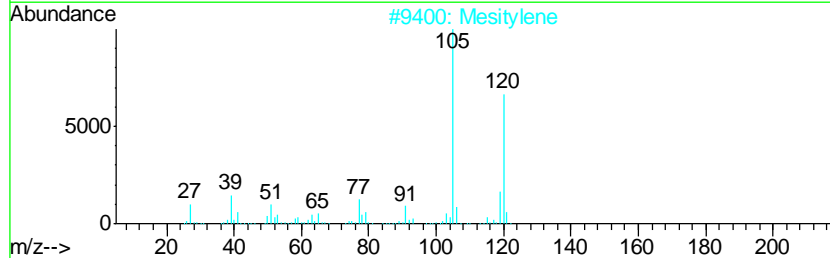
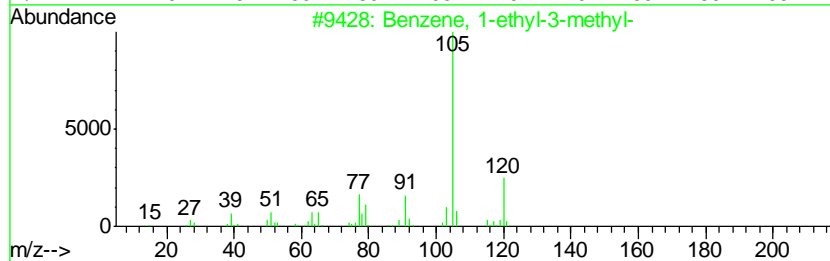
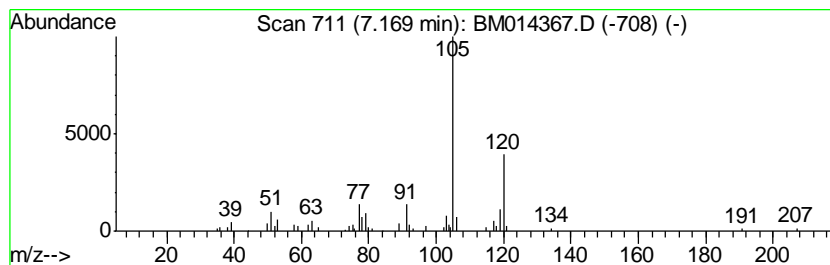
Quant Method : Z:\HPCHEM1\BNA_M\METHODS\SOM-EPA-BM021418.M
 Quant Title : SVOA CALIBRATION

TIC Library : C:\DATABASE\NIST11.L
 TIC Integration Parameters: LSCINT.P

 Peak Number 3 Benzene, 1-ethyl-3-methyl- Concentration Rank 21

R.T.	EstConc	Area	Relative to ISTD	R.T.
7.17	2.77 ng/ul	156313	1,4-Dichlorobenzene-d4	7.52

Hit#	of	Tentative ID	MW	MolForm	CAS#	Qual
1	5	Benzene, 1-ethyl-3-methyl-	120	C9H12	000620-14-4	94
2		Mesitylene	120	C9H12	000108-67-8	90
3		Mesitylene	120	C9H12	000108-67-8	90
4		Benzene, 1,2,3-trimethyl-	120	C9H12	000526-73-8	87
5		Benzene, 1,2,3-trimethyl-	120	C9H12	000526-73-8	87



Data Path : \\74.0.250.170\SVOASRV\HPCHEM1\BNA_M\DATA\BM022618\
 Data File : BM014367.D
 Acq On : 26 Feb 2018 21:36
 Operator : SJ/JU
 Sample : J1631-07
 Misc :
 ALS Vial : 18 Sample Multiplier: 1

Instrument :
 BNA_M
 ClientSampled :
 BE5Y8

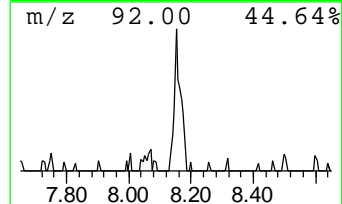
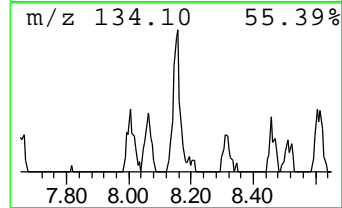
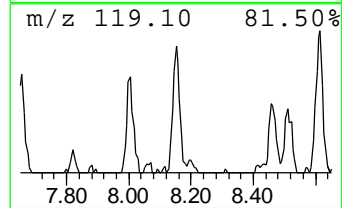
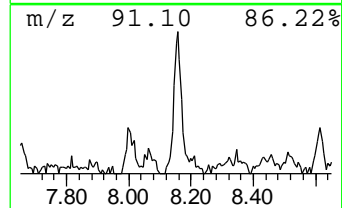
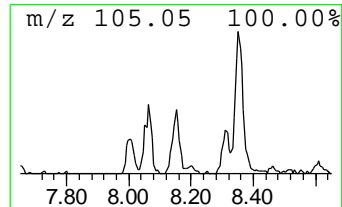
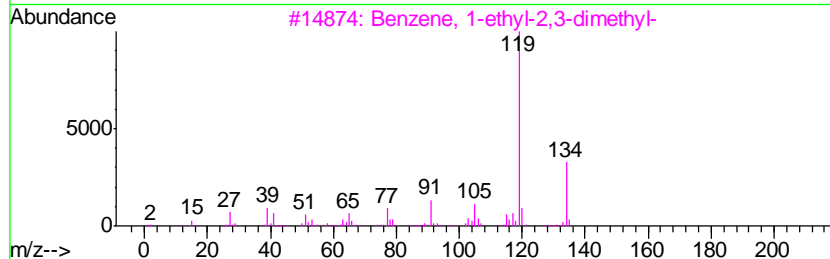
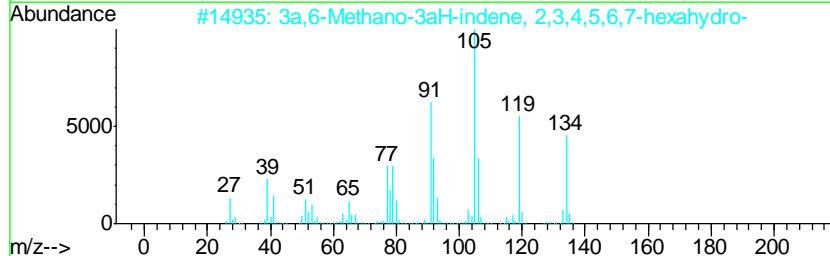
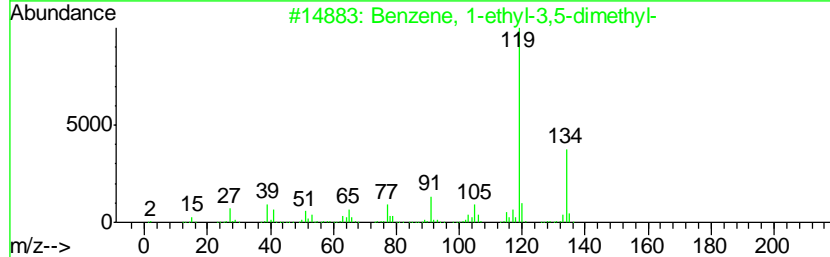
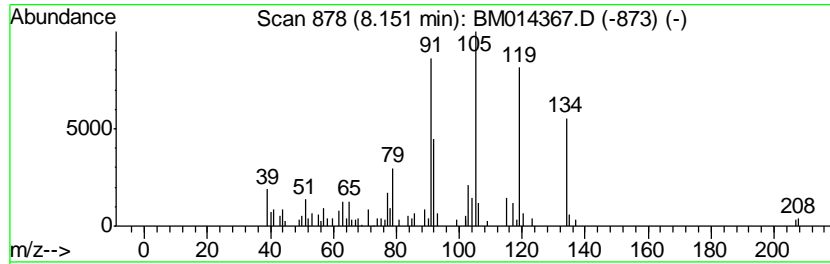
Quant Method : Z:\HPCHEM1\BNA_M\METHODS\SOM-EPA-BM021418.M
 Quant Title : SVOA CALIBRATION

TIC Library : C:\DATABASE\NIST11.L
 TIC Integration Parameters: LSCINT.P

 Peak Number 5 Benzene, 1-ethyl-3,5-dimethyl- Concentration Rank 20

R.T.	EstConc	Area	Relative to ISTD	R.T.
8.15	3.20 ng/ul	180785	1,4-Dichlorobenzene-d4	7.52

Hit#	of	Tentative ID	MW	MolForm	CAS#	Qual
1	5	Benzene, 1-ethyl-3,5-dimethyl-	134	C10H14	000934-74-7	76
2		3a,6-Methano-3aH-indene, 2,3,4,5...	134	C10H14	098640-10-9	64
3		Benzene, 1-ethyl-2,3-dimethyl-	134	C10H14	000933-98-2	62
4		Benzene, 1,4-diethyl-	134	C10H14	000105-05-5	62
5		Bicyclo[3.2.1]oct-2-ene, 3-methy...	134	C10H14	049826-53-1	58



Data Path : \\74.0.250.170\SVOASRV\HPCHEM1\BNA_M\DATA\BM022618\
 Data File : BM014367.D
 Acq On : 26 Feb 2018 21:36
 Operator : SJ/JU
 Sample : J1631-07
 Misc :
 ALS Vial : 18 Sample Multiplier: 1

Instrument :
 BNA_M
 ClientSampleID :
 BE5Y8

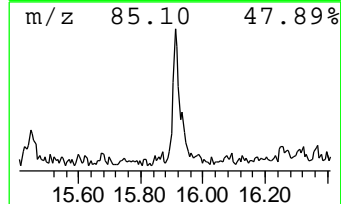
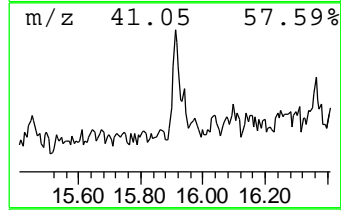
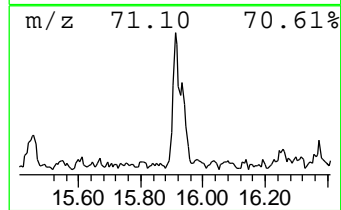
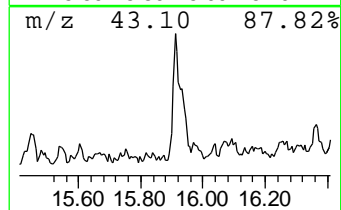
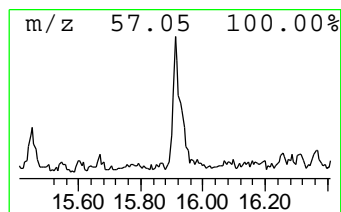
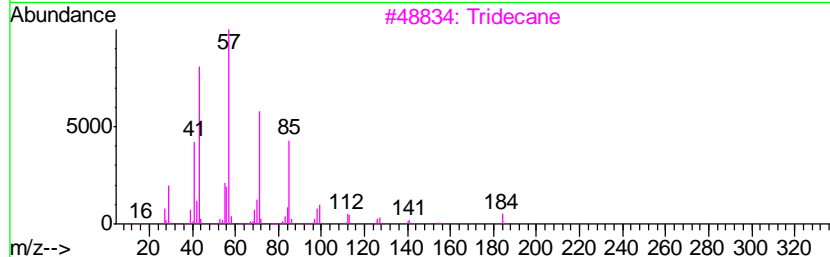
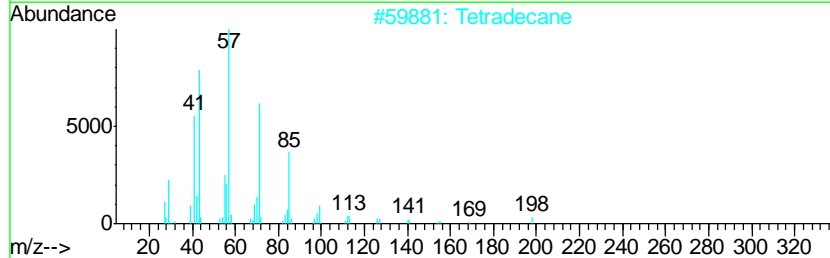
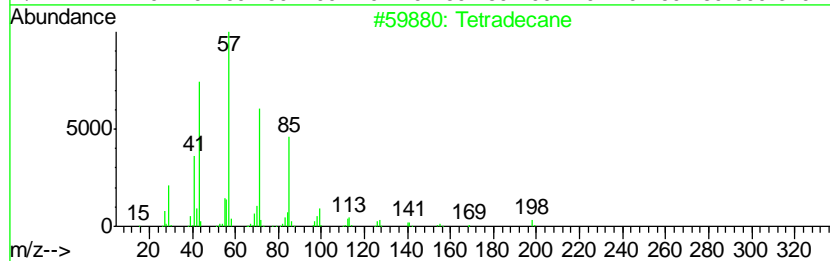
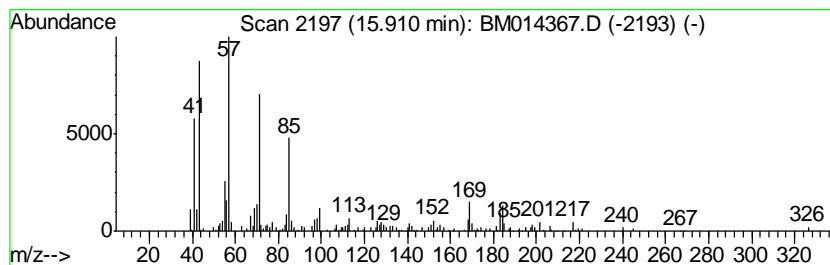
Quant Method : Z:\HPCHEM1\BNA_M\METHODS\SOM-EPA-BM021418.M
 Quant Title : SVOA CALIBRATION

TIC Library : C:\DATABASE\NIST11.L
 TIC Integration Parameters: LSCINT.P

 Peak Number 6 (DEL) Alkane: Straight-Chai... Concentration Rank 19

R.T.	EstConc	Area	Relative to ISTD	R.T.
15.91	3.78 ng/ul	450765	Phenanthrene-d10	16.94

Hit#	of	Tentative ID	MW	MolForm	CAS#	Qual
1	5	Tetradecane	198	C14H30	000629-59-4	93
2		Tetradecane	198	C14H30	000629-59-4	90
3		Tridecane	184	C13H28	000629-50-5	89
4		Tridecane	184	C13H28	000629-50-5	89
5		Tridecane	184	C13H28	000629-50-5	89



Data Path : \\74.0.250.170\SVOASRV\HPCHEM1\BNA_M\DATA\BM022618\
 Data File : BM014367.D
 Acq On : 26 Feb 2018 21:36
 Operator : SJ/JU
 Sample : J1631-07
 Misc :
 ALS Vial : 18 Sample Multiplier: 1

Instrument :
 BNA_M
 ClientSampleID :
 BE5Y8

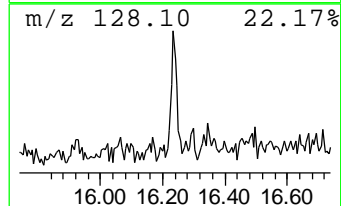
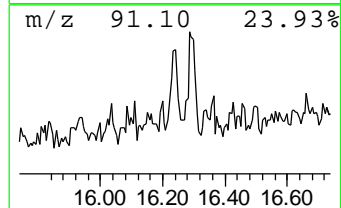
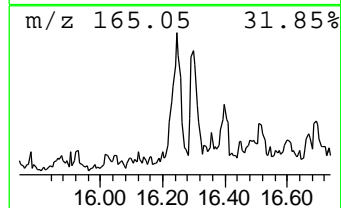
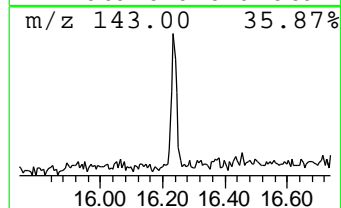
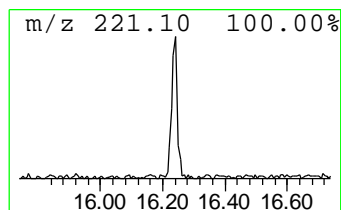
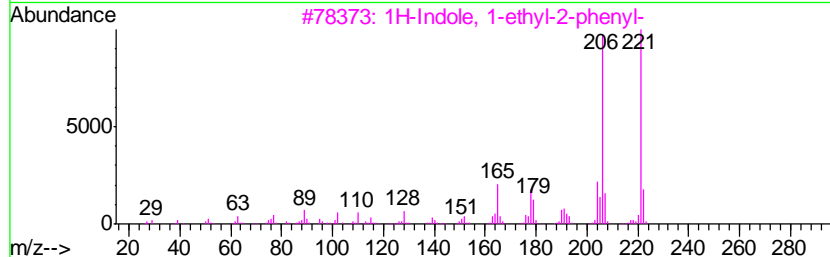
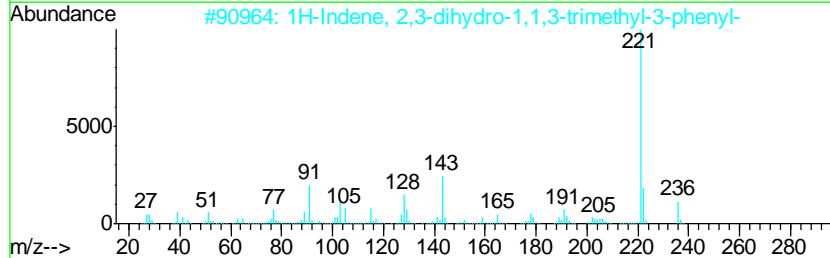
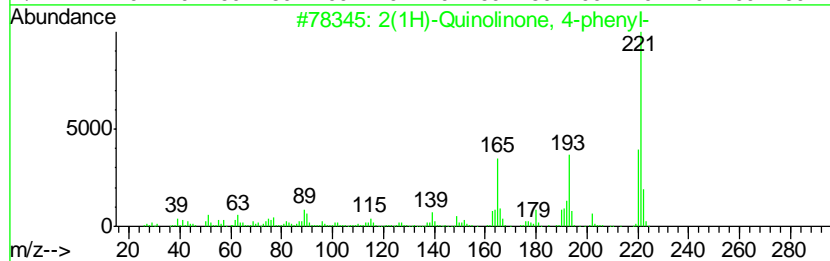
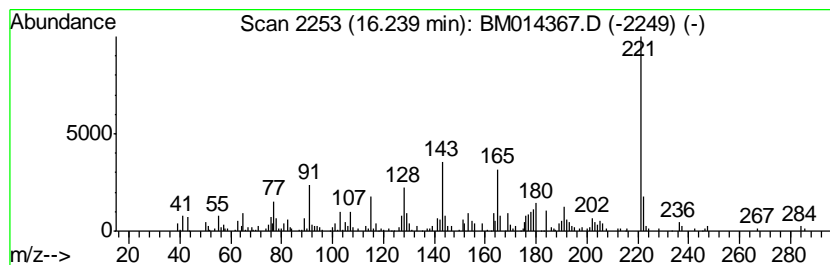
Quant Method : Z:\HPCHEM1\BNA_M\METHODS\SOM-EPA-BM021418.M
 Quant Title : SVOA CALIBRATION

TIC Library : C:\DATABASE\NIST11.L
 TIC Integration Parameters: LSCINT.P

 Peak Number 7 2(1H)-Quinolinone, 4-phenyl- Concentration Rank 22

R.T.	EstConc	Area	Relative to ISTD	R.T.
16.24	2.68 ng/ul	319518	Phenanthrene-d10	16.94

Hit#	of	Tentative ID	MW	MolForm	CAS#	Qual
1	5	2(1H)-Quinolinone, 4-phenyl-	221	C15H11NO	005855-57-2	60
2		1H-Indene, 2,3-dihydro-1,1,3-tri...	236	C18H20	003910-35-8	60
3		1H-Indole, 1-ethyl-2-phenyl-	221	C16H15N	013228-39-2	53
4		9-(Methylaminomethyl)anthracene	221	C16H15N	073356-19-1	53
5		1H-Indole, 1-ethyl-2-phenyl-	221	C16H15N	013228-39-2	53



Data Path : \\74.0.250.170\SVOASRV\HPCHEM1\BNA_M\DATA\BM022618\
 Data File : BM014367.D
 Acq On : 26 Feb 2018 21:36
 Operator : SJ/JU
 Sample : J1631-07
 Misc :
 ALS Vial : 18 Sample Multiplier: 1

Instrument :
 BNA_M
 ClientSampleId :
 BE5Y8

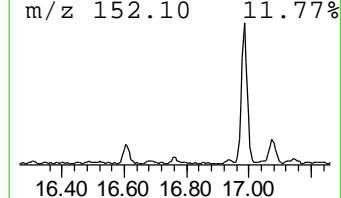
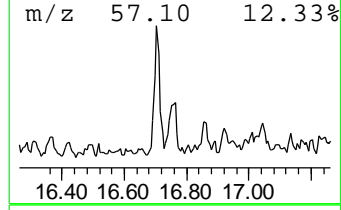
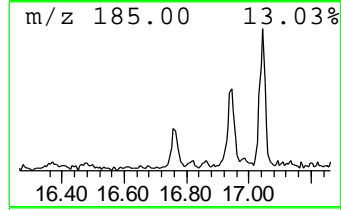
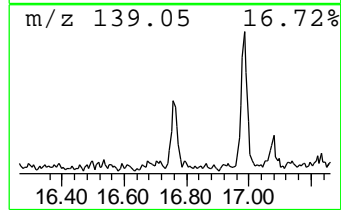
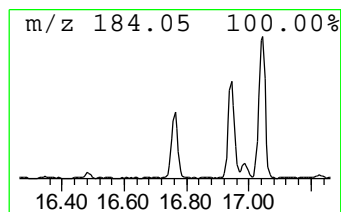
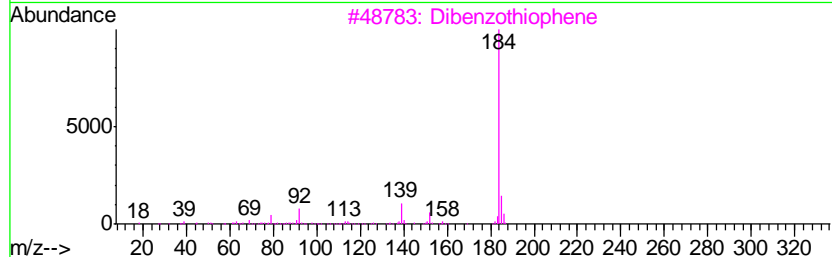
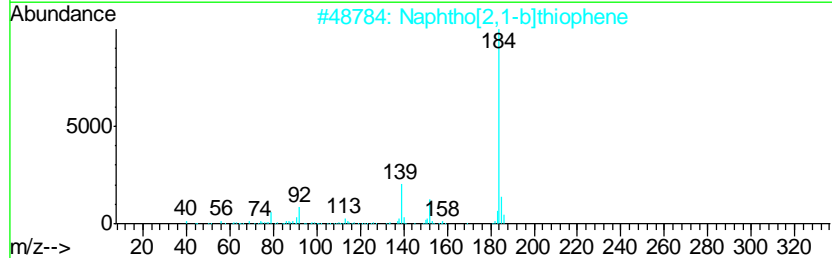
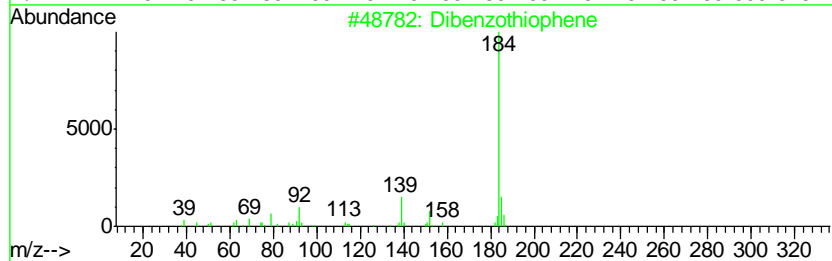
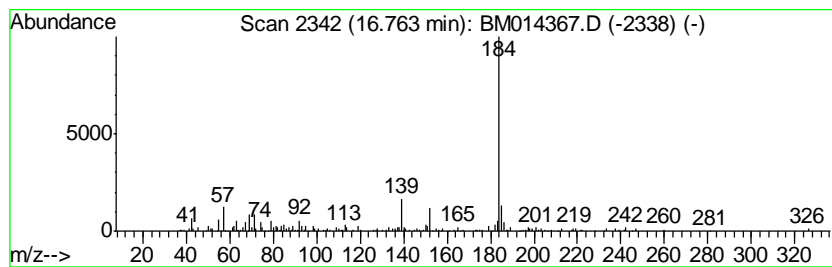
Quant Method : Z:\HPCHEM1\BNA_M\METHODS\SOM-EPA-BM021418.M
 Quant Title : SVOA CALIBRATION

TIC Library : C:\DATABASE\NIST11.L
 TIC Integration Parameters: LSCINT.P

 Peak Number 8 Dibenzothiophene Concentration Rank 25

R.T.	EstConc	Area	Relative to ISTD	R.T.
16.76	2.11 ng/ul	251896	Phenanthrene-d10	16.94

Hit#	of	Tentative ID	MW	MolForm	CAS#	Qual
1	5	Dibenzothiophene	184	C12H8S	000132-65-0	87
2		Naphtho[2,1-b]thiophene	184	C12H8S	000233-02-3	87
3		Dibenzothiophene	184	C12H8S	000132-65-0	81
4		Dibenzothiophene	184	C12H8S	000132-65-0	81
5		Naphtho[1,2-b]thiophene	184	C12H8S	000234-41-3	81



Data Path : \\74.0.250.170\SVOASRV\HPCHEM1\BNA_M\DATA\BM022618\
 Data File : BM014367.D
 Acq On : 26 Feb 2018 21:36
 Operator : SJ/JU
 Sample : J1631-07
 Misc :
 ALS Vial : 18 Sample Multiplier: 1

Instrument :
 BNA_M
 ClientSampleID :
 BE5Y8

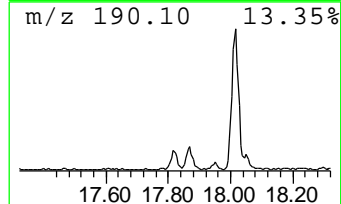
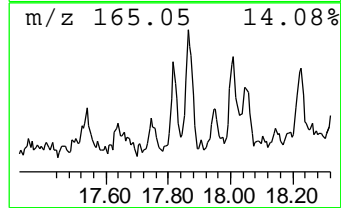
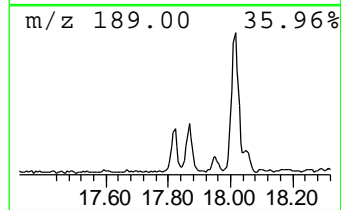
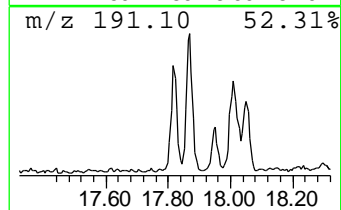
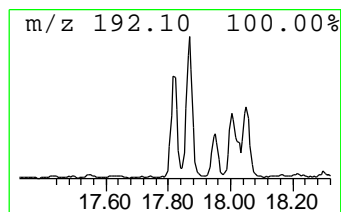
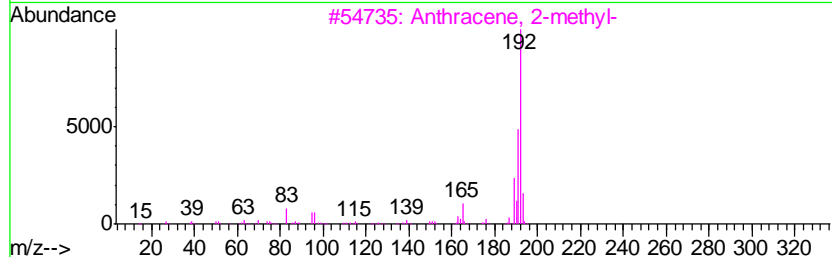
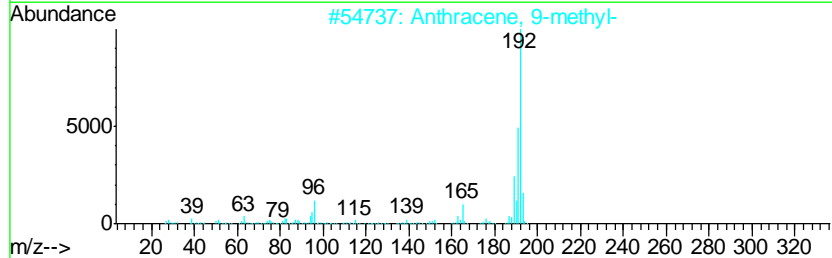
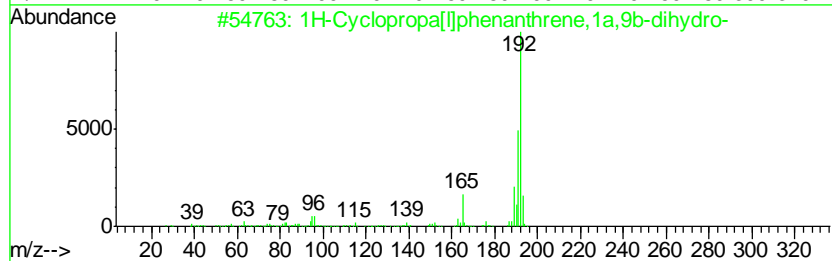
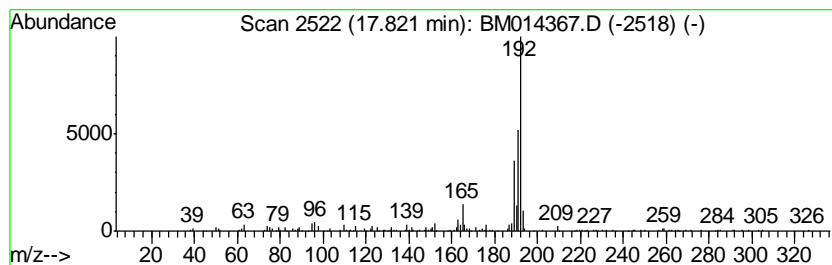
Quant Method : Z:\HPCHEM1\BNA_M\METHODS\SOM-EPA-BM021418.M
 Quant Title : SVOA CALIBRATION

TIC Library : C:\DATABASE\NIST11.L
 TIC Integration Parameters: LSCINT.P

 Peak Number 9 1H-Cyclopropa[l]phenanthren... Concentration Rank 24

R.T.	EstConc	Area	Relative to ISTD	R.T.
17.82	2.33 ng/ul	277382	Phenanthrene-d10	16.94

Hit#	of	Tentative ID	MW	MolForm	CAS#	Qual
1	5	1H-Cyclopropa[l]phenanthrene, 1a, ...	192	C15H12	000949-41-7	93
2		Anthracene, 9-methyl-	192	C15H12	000779-02-2	90
3		Anthracene, 2-methyl-	192	C15H12	000613-12-7	90
4		1H-Indene, 2-phenyl-	192	C15H12	004505-48-0	90
5		Phenanthrene, 2-methyl-	192	C15H12	002531-84-2	90



Data Path : \\74.0.250.170\SVOASRV\HPCHEM1\BNA_M\DATA\BM022618\
 Data File : BM014367.D
 Acq On : 26 Feb 2018 21:36
 Operator : SJ/JU
 Sample : J1631-07
 Misc :
 ALS Vial : 18 Sample Multiplier: 1

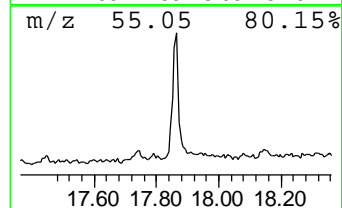
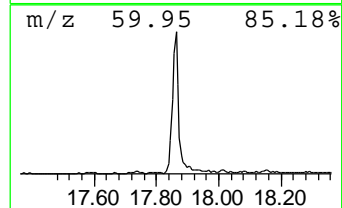
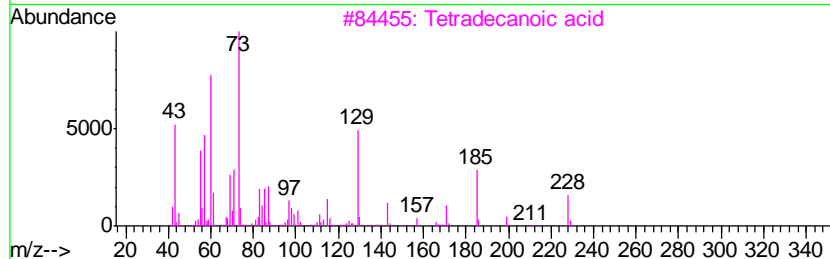
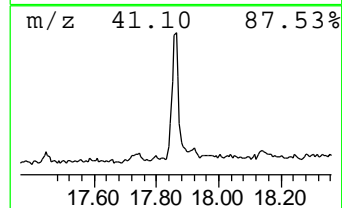
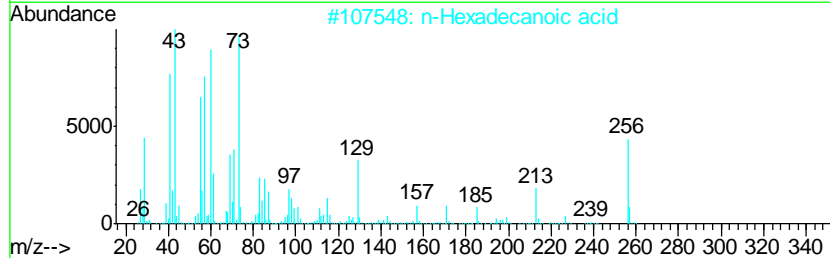
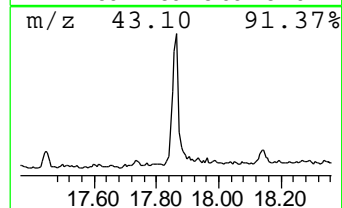
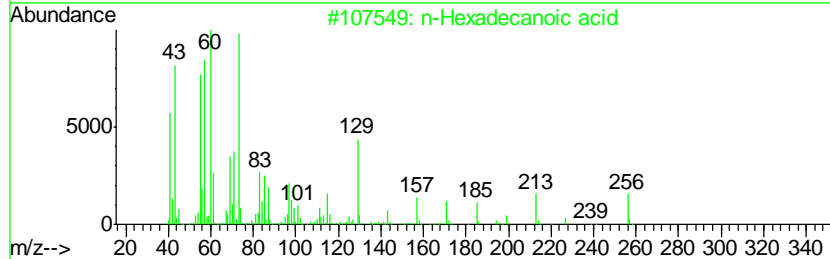
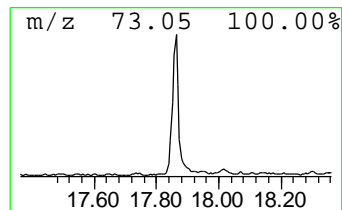
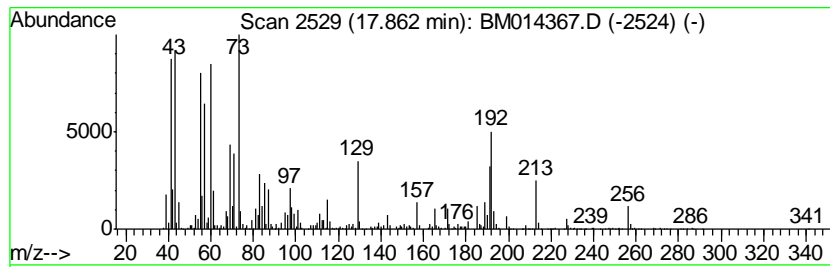
Instrument :
 BNA_M
 ClientSampleID :
 BE5Y8

Quant Method : Z:\HPCHEM1\BNA_M\METHODS\SOM-EPA-BM021418.M
 Quant Title : SVOA CALIBRATION

TIC Library : C:\DATABASE\NIST11.L
 TIC Integration Parameters: LSCINT.P

 Peak Number 10 n-Hexadecanoic acid Concentration Rank 7

R.T.	EstConc	Area	Relative to ISTD	R.T.		
17.86	24.24 ng/ul	2887340	Phenanthrene-d10	16.94		
Hit# of	5	Tentative ID	MW	MolForm	CAS#	Qual
1		n-Hexadecanoic acid	256	C16H32O2	000057-10-3	99
2		n-Hexadecanoic acid	256	C16H32O2	000057-10-3	98
3		Tetradecanoic acid	228	C14H28O2	000544-63-8	96
4		Tridecanoic acid	214	C13H26O2	000638-53-9	91
5		Pentadecanoic acid	242	C15H30O2	001002-84-2	70



Data Path : \\74.0.250.170\SVOASRV\HPCHEM1\BNA_M\DATA\BM022618\
 Data File : BM014367.D
 Acq On : 26 Feb 2018 21:36
 Operator : SJ/JU
 Sample : J1631-07
 Misc :
 ALS Vial : 18 Sample Multiplier: 1

Instrument :
 BNA_M
 ClientSampleID :
 BE5Y8

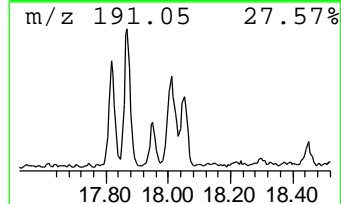
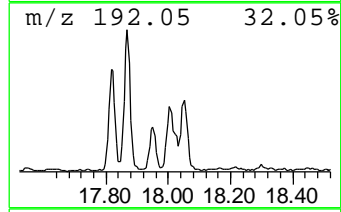
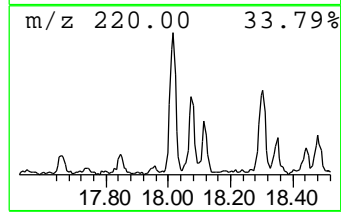
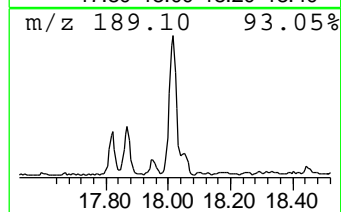
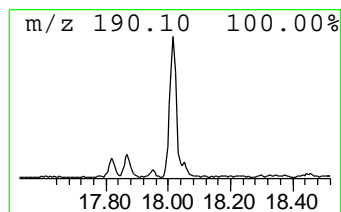
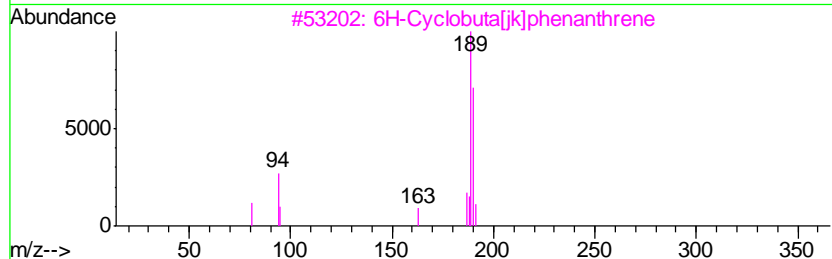
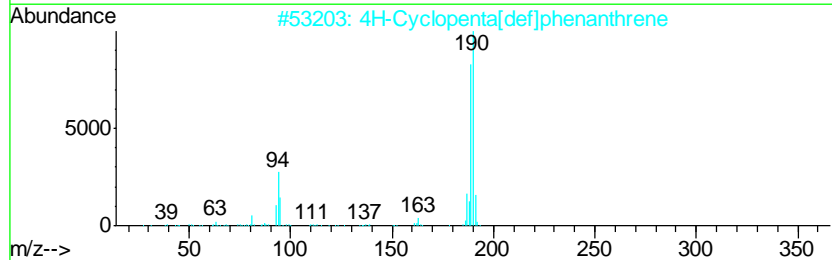
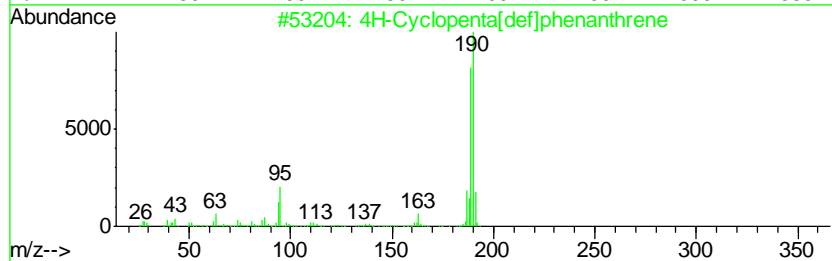
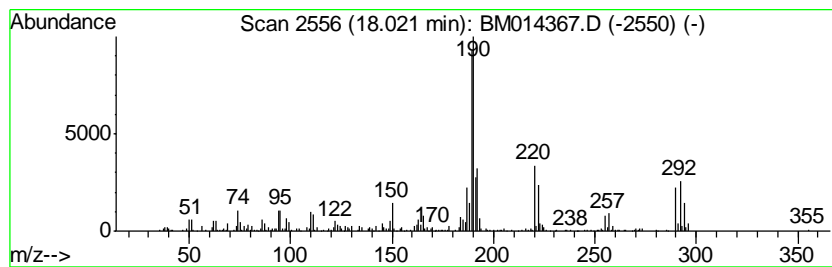
Quant Method : Z:\HPCHEM1\BNA_M\METHODS\SOM-EPA-BM021418.M
 Quant Title : SVOA CALIBRATION

TIC Library : C:\DATABASE\NIST11.L
 TIC Integration Parameters: LSCINT.P

 Peak Number 11 4H-Cyclopenta[def]phenanthrene Concentration Rank 11

R.T.	EstConc	Area	Relative to ISTD	R.T.
18.02	9.61 ng/ul	1144420	Phenanthrene-d10	16.94

Hit#	of	Tentative ID	MW	MolForm	CAS#	Qual
1	5	4H-Cyclopenta[def]phenanthrene	190	C15H10	000203-64-5	60
2		4H-Cyclopenta[def]phenanthrene	190	C15H10	000203-64-5	49
3		6H-Cyclobuta[jk]phenanthrene	190	C15H10	083469-43-6	47
4		4-(4-Methyl-piperidin-1-yl)-phen...	190	C12H18N2	342013-25-6	46
5		4H-Cyclopenta[def]phenanthrene	190	C15H10	000203-64-5	38



Data Path : \\74.0.250.170\SVOASRV\HPCHEM1\BNA_M\DATA\BM022618\
 Data File : BM014367.D
 Acq On : 26 Feb 2018 21:36
 Operator : SJ/JU
 Sample : J1631-07
 Misc :
 ALS Vial : 18 Sample Multiplier: 1

Instrument :
 BNA_M
 ClientSampleID :
 BE5Y8

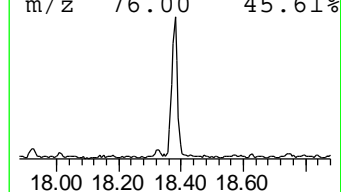
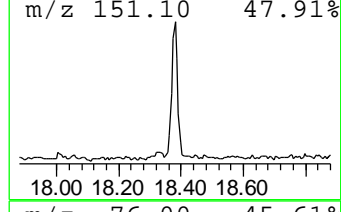
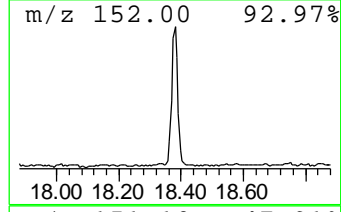
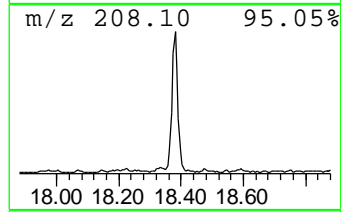
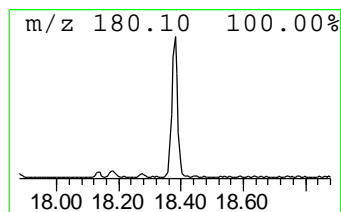
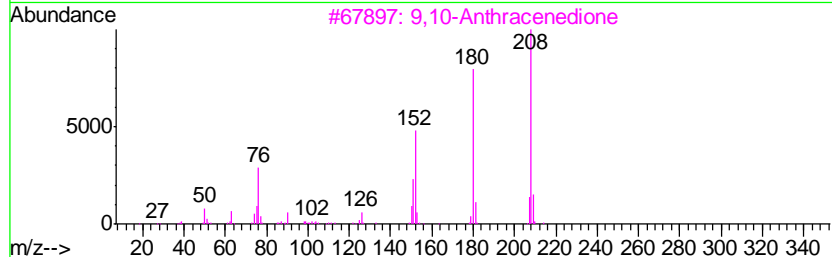
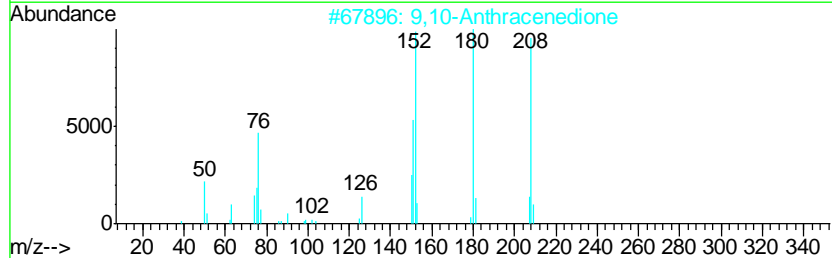
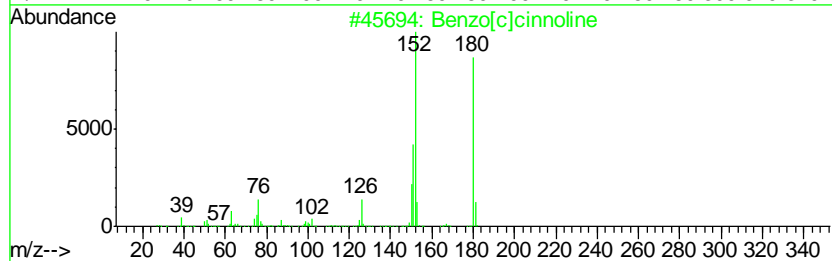
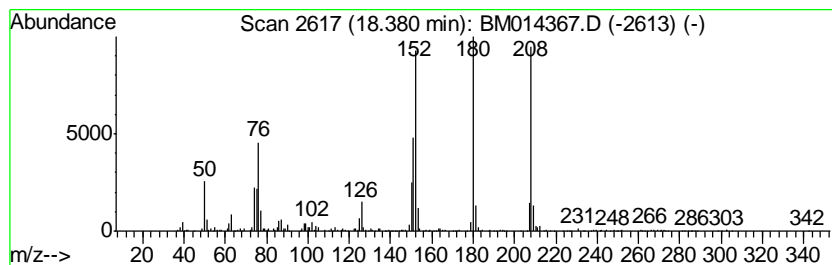
Quant Method : Z:\HPCHEM1\BNA_M\METHODS\SOM-EPA-BM021418.M
 Quant Title : SVOA CALIBRATION

TIC Library : C:\DATABASE\NIST11.L
 TIC Integration Parameters: LSCINT.P

 Peak Number 12 Benzo[c]cinnoline Concentration Rank 10

R.T.	EstConc	Area	Relative to ISTD	R.T.
18.38	11.75 ng/ul	1399460	Phenanthrene-d10	16.94

Hit#	of	Tentative ID	MW	MolForm	CAS#	Qual
1	5	Benzo[c]cinnoline	180	C12H8N2	000230-17-1	96
2		9,10-Anthracenedione	208	C14H8O2	000084-65-1	96
3		9,10-Anthracenedione	208	C14H8O2	000084-65-1	94
4		9,10-Anthracenedione	208	C14H8O2	000084-65-1	93
5		Benzo[c]cinnoline	180	C12H8N2	000230-17-1	83



Data Path : \\74.0.250.170\SVOASRV\HPCHEM1\BNA_M\DATA\BM022618\
 Data File : BM014367.D
 Acq On : 26 Feb 2018 21:36
 Operator : SJ/JU
 Sample : J1631-07
 Misc :
 ALS Vial : 18 Sample Multiplier: 1

Instrument :
 BNA_M
 ClientSampled :
 BE5Y8

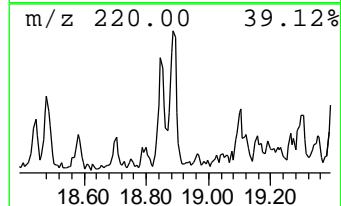
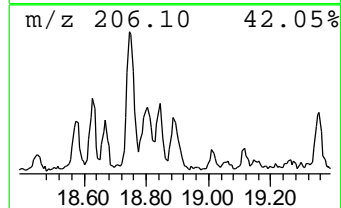
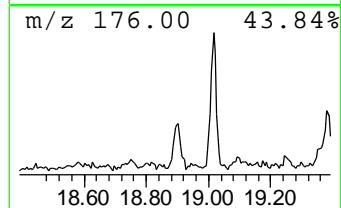
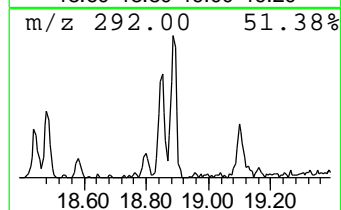
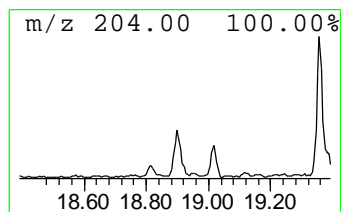
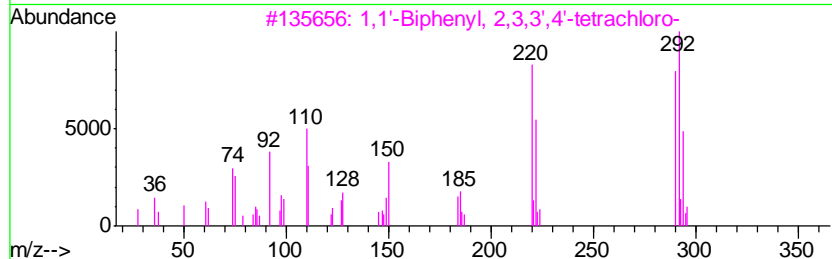
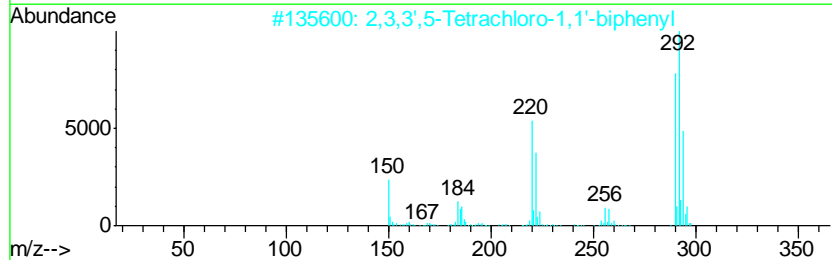
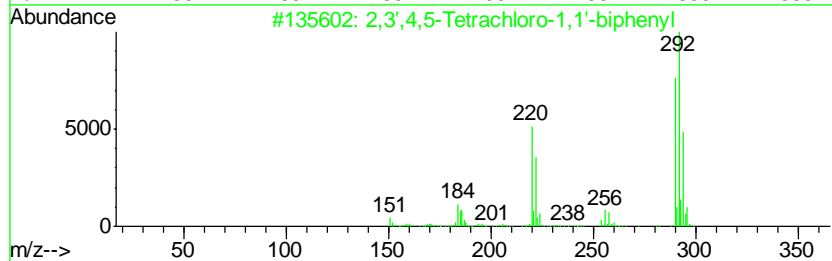
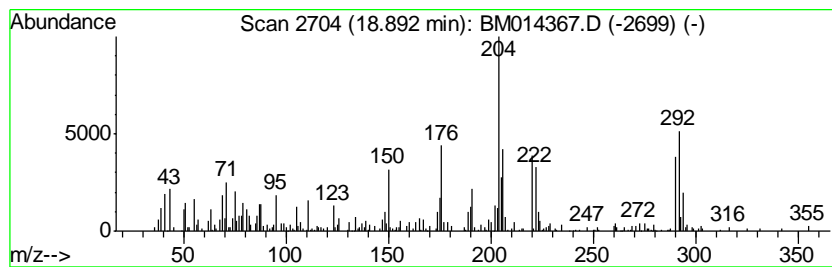
Quant Method : Z:\HPCHEM1\BNA_M\METHODS\SOM-EPA-BM021418.M
 Quant Title : SVOA CALIBRATION

TIC Library : C:\DATABASE\NIST11.L
 TIC Integration Parameters: LSCINT.P

 Peak Number 13 2,3',4,5-Tetrachloro-1,1'-b... Concentration Rank 16

R.T.	EstConc	Area	Relative to ISTD	R.T.
18.89	6.89 ng/ul	820876	Phenanthrene-d10	16.94

Hit#	of	Tentative ID	MW	MolForm	CAS#	Qual
1	5	2,3',4,5-Tetrachloro-1,1'-biphenyl	290	C12H6Cl4	073575-53-8	70
2		2,3,3',5-Tetrachloro-1,1'-biphenyl	290	C12H6Cl4	070424-67-8	70
3		1,1'-Biphenyl, 2,3,3',4'-tetrach...	290	C12H6Cl4	041464-43-1	64
4		2,3,4',5-Tetrachloro-1,1'-biphenyl	290	C12H6Cl4	074472-34-7	64
5		1,1'-Biphenyl, 3,3',4,5'-tetrach...	290	C12H6Cl4	041464-48-6	64



Data Path : \\74.0.250.170\SVOASRV\HPCHEM1\BNA_M\DATA\BM022618\
 Data File : BM014367.D
 Acq On : 26 Feb 2018 21:36
 Operator : SJ/JU
 Sample : J1631-07
 Misc :
 ALS Vial : 18 Sample Multiplier: 1

Instrument :
 BNA_M
 ClientSampleID :
 BE5Y8

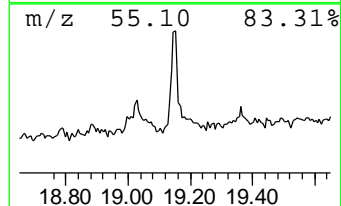
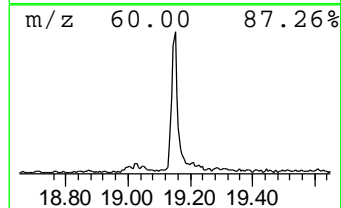
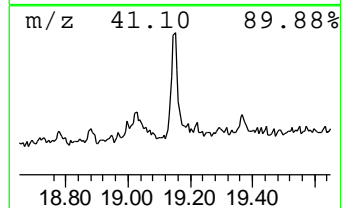
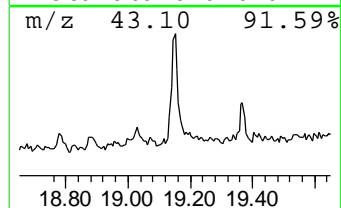
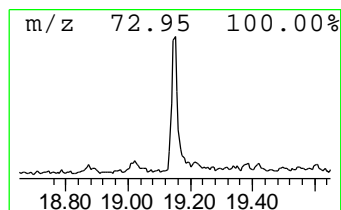
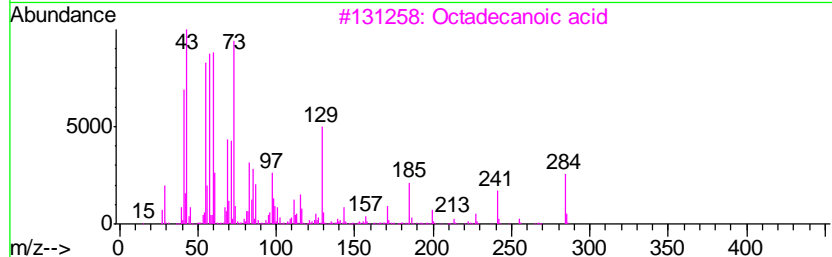
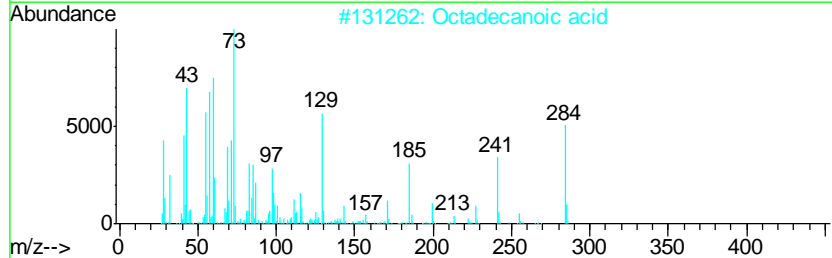
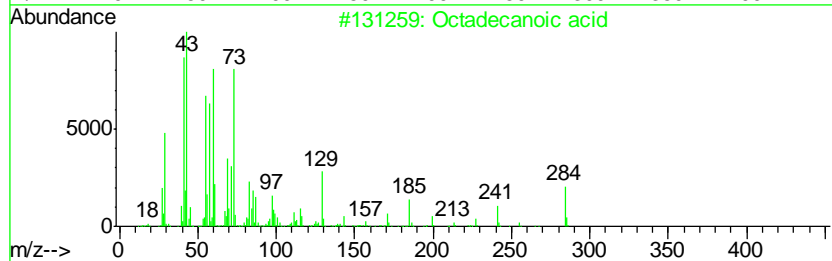
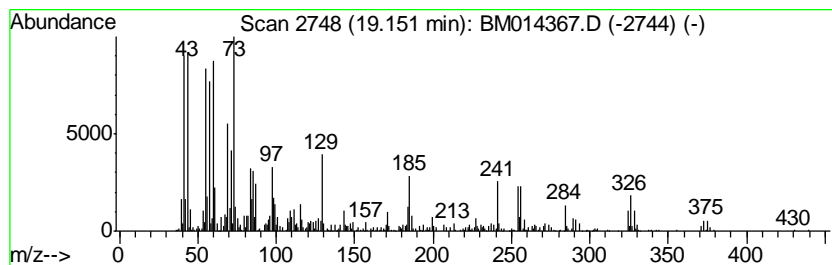
Quant Method : Z:\HPCHEM1\BNA_M\METHODS\SOM-EPA-BM021418.M
 Quant Title : SVOA CALIBRATION

TIC Library : C:\DATABASE\NIST11.L
 TIC Integration Parameters: LSCINT.P

 Peak Number 14 Octadecanoic acid Concentration Rank 13

R.T.	EstConc	Area	Relative to ISTD	R.T.
19.15	8.25 ng/ul	1823220	Chrysene-d12	21.16

Hit#	of	Tentative ID	MW	MolForm	CAS#	Qual
1	5	Octadecanoic acid	284	C18H36O2	000057-11-4	96
2		Octadecanoic acid	284	C18H36O2	000057-11-4	96
3		Octadecanoic acid	284	C18H36O2	000057-11-4	95
4		Octadecanoic acid	284	C18H36O2	000057-11-4	91
5		n-Hexadecanoic acid	256	C16H32O2	000057-10-3	70



Data Path : \\74.0.250.170\SVOASRV\HPCHEM1\BNA_M\DATA\BM022618\
 Data File : BM014367.D
 Acq On : 26 Feb 2018 21:36
 Operator : SJ/JU
 Sample : J1631-07
 Misc :
 ALS Vial : 18 Sample Multiplier: 1

Instrument :
 BNA_M
 ClientSampleID :
 BE5Y8

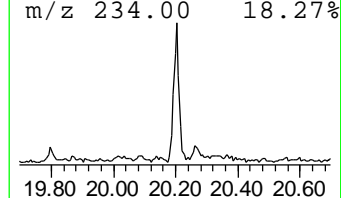
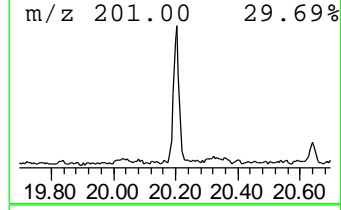
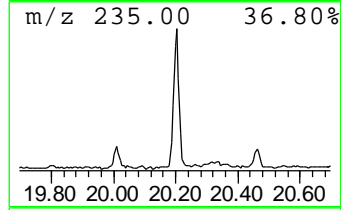
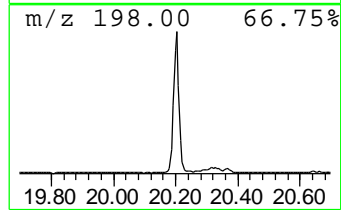
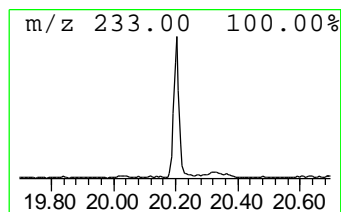
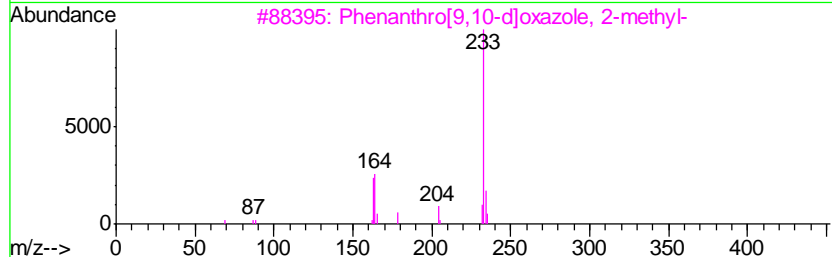
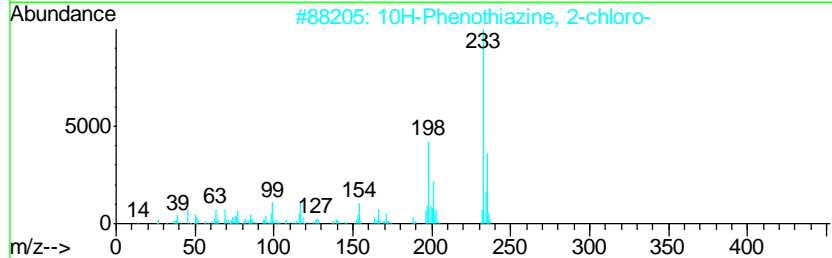
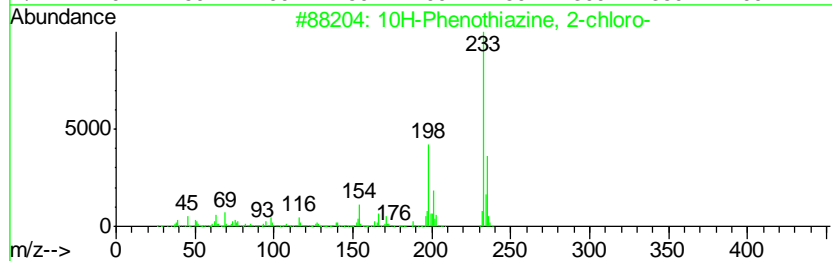
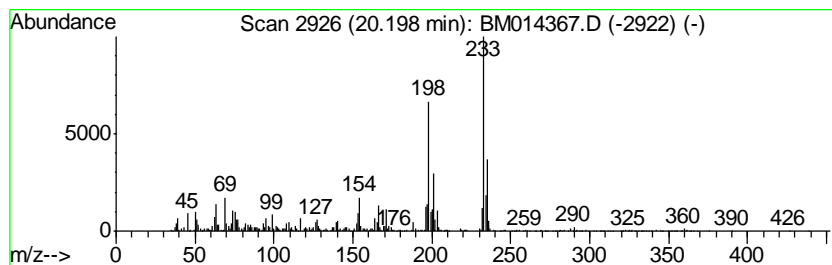
Quant Method : Z:\HPCHEM1\BNA_M\METHODS\SOM-EPA-BM021418.M
 Quant Title : SVOA CALIBRATION

TIC Library : C:\DATABASE\NIST11.L
 TIC Integration Parameters: LSCINT.P

 Peak Number 15 10H-Phenothiazine, 2-chloro- Concentration Rank 9

R.T.	EstConc	Area	Relative to ISTD	R.T.
20.20	13.57 ng/ul	2998990	Chrysene-d12	21.16

Hit#	of	Tentative ID	MW	MolForm	CAS#	Qual
1	5	10H-Phenothiazine, 2-chloro-	233	C12H8ClNS	000092-39-7	99
2		10H-Phenothiazine, 2-chloro-	233	C12H8ClNS	000092-39-7	95
3		Phenanthro[9,10-d]oxazole, 2-met...	233	C16H11NO	021639-88-3	43
4		Isophthalic acid, hexyl 2,4,5-tr...	428	C20H19Cl3O4	1000356-61-3	38
5		Isophthalic acid, hexyl 2-methyl...	304	C18H24O4	1000343-94-9	38



Data Path : \\74.0.250.170\SVOASRV\HPCHEM1\BNA_M\DATA\BM022618\
 Data File : BM014367.D
 Acq On : 26 Feb 2018 21:36
 Operator : SJ/JU
 Sample : J1631-07
 Misc :
 ALS Vial : 18 Sample Multiplier: 1

Instrument :
 BNA_M
 ClientSampleID :
 BE5Y8

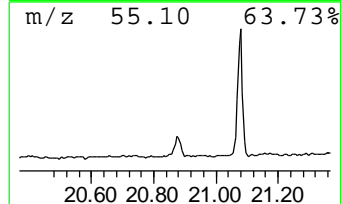
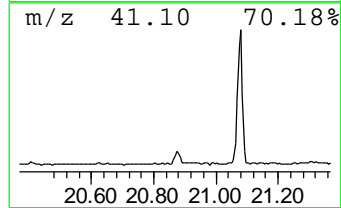
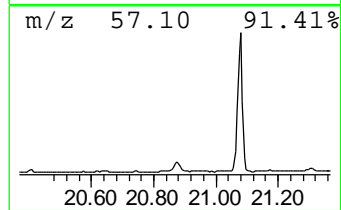
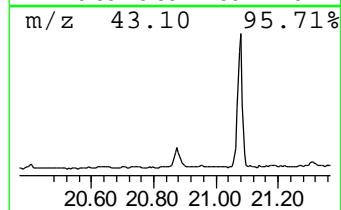
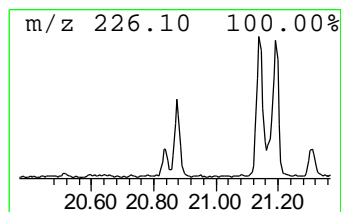
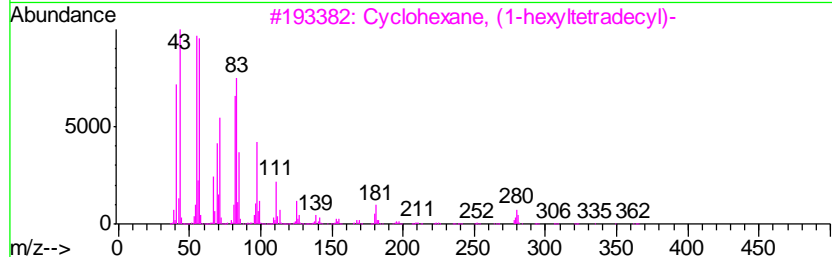
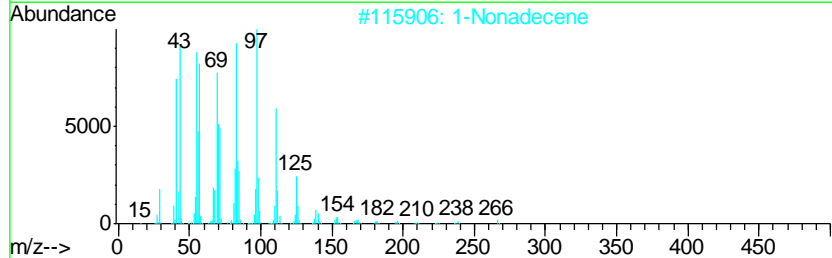
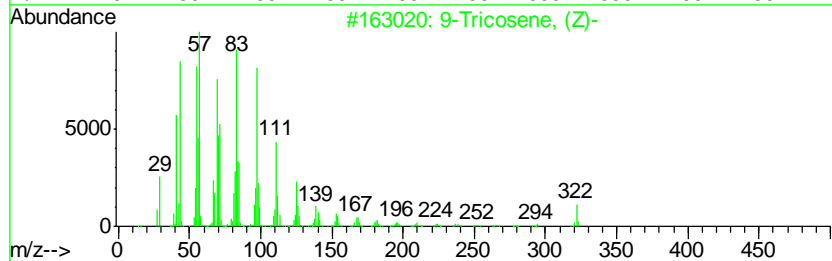
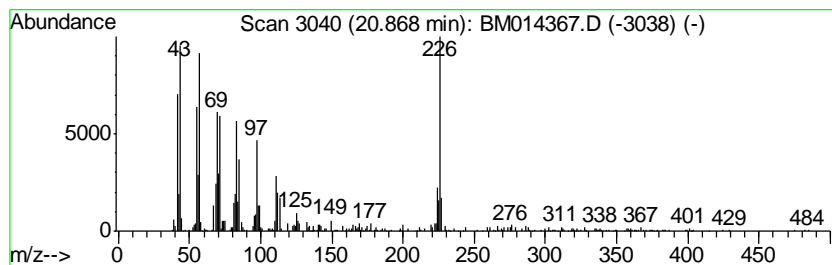
Quant Method : Z:\HPCHEM1\BNA_M\METHODS\SOM-EPA-BM021418.M
 Quant Title : SVOA CALIBRATION

TIC Library : C:\DATABASE\NIST11.L
 TIC Integration Parameters: LSCINT.P

 Peak Number 16 (DEL) Alkane: Cyclic20.87 Concentration Rank 17

R.T.	EstConc	Area	Relative to ISTD	R.T.
20.87	6.87 ng/ul	1518160	Chrysene-d12	21.16

Hit#	of	Tentative ID	MW	MolForm	CAS#	Qual
1	5	9-Tricosene, (Z)-	322	C23H46	027519-02-4	87
2		1-Nonadecene	266	C19H38	018435-45-5	84
3		Cyclohexane, (1-hexyltetradecyl)-	364	C26H52	004443-60-1	60
4		Nonadecyl trifluoroacetate	380	C21H39F3O2	1000351-76-3	55
5		17-Pentatriacontene	491	C35H70	006971-40-0	55



Data Path : \\74.0.250.170\SVOASRV\HPCHEM1\BNA_M\DATA\BM022618\
 Data File : BM014367.D
 Acq On : 26 Feb 2018 21:36
 Operator : SJ/JU
 Sample : J1631-07
 Misc :
 ALS Vial : 18 Sample Multiplier: 1

Instrument :
 BNA_M
 ClientSampleID :
 BE5Y8

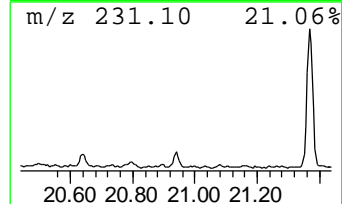
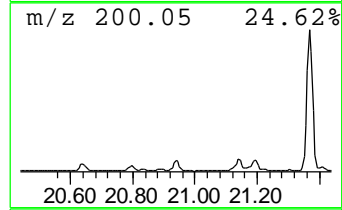
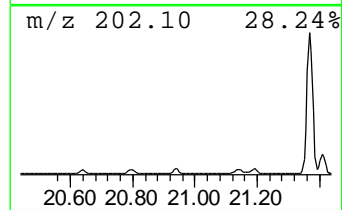
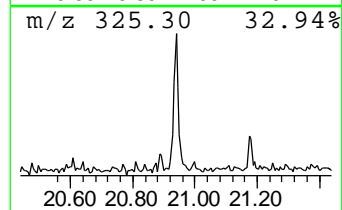
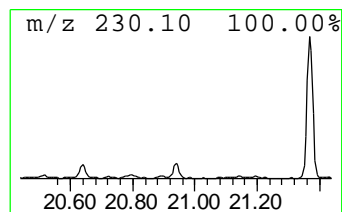
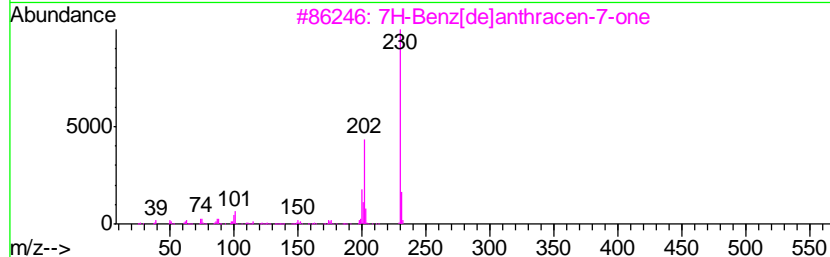
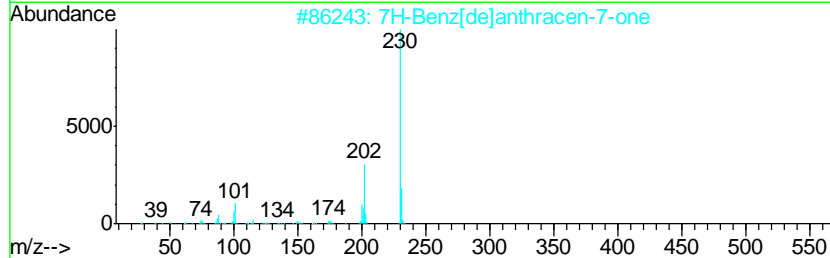
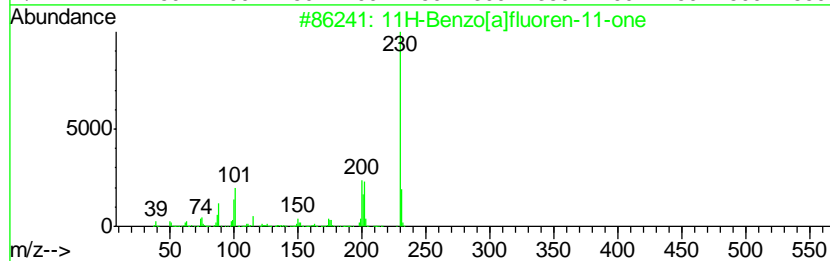
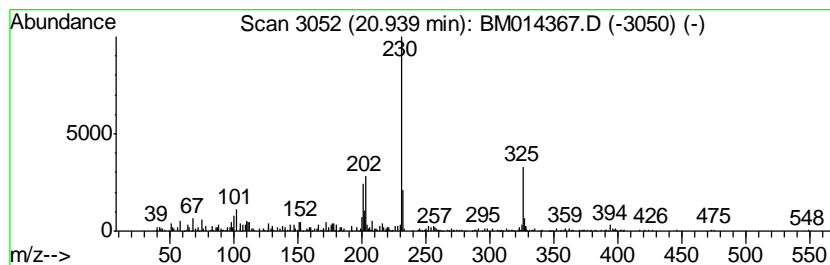
Quant Method : Z:\HPCHEM1\BNA_M\METHODS\SOM-EPA-BM021418.M
 Quant Title : SVOA CALIBRATION

TIC Library : C:\DATABASE\NIST11.L
 TIC Integration Parameters: LSCINT.P

 Peak Number 17 11H-Benzo[a]fluoren-11-one Concentration Rank 23

R.T.	EstConc	Area	Relative to ISTD	R.T.
20.94	2.67 ng/ul	589754	Chrysene-d12	21.16

Hit#	of	Tentative ID	MW	MolForm	CAS#	Qual
1	5	11H-Benzo[a]fluoren-11-one	230	C17H10O	000479-79-8	76
2		7H-Benz[de]anthracen-7-one	230	C17H10O	000082-05-3	59
3		7H-Benz[de]anthracen-7-one	230	C17H10O	000082-05-3	52
4		Benzo(a)phenazine	230	C16H10N2	000225-61-6	43
5		Benzene, 1-phenyl-4-(2,2-dicyano...	230	C16H10N2	026089-09-8	43



Data Path : \\74.0.250.170\SVOASRV\HPCHEM1\BNA_M\DATA\BM022618\
 Data File : BM014367.D
 Acq On : 26 Feb 2018 21:36
 Operator : SJ/JU
 Sample : J1631-07
 Misc :
 ALS Vial : 18 Sample Multiplier: 1

Instrument :
 BNA_M
 ClientSampled :
 BE5Y8

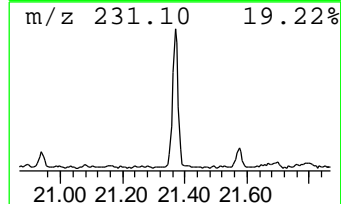
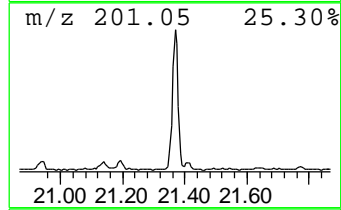
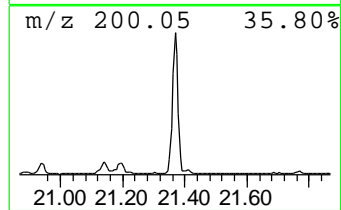
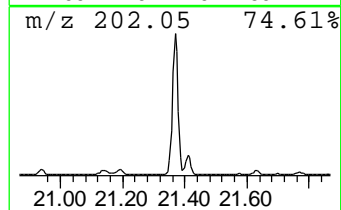
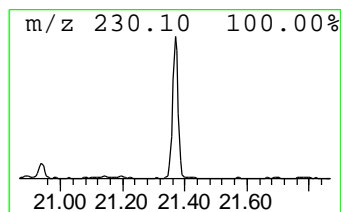
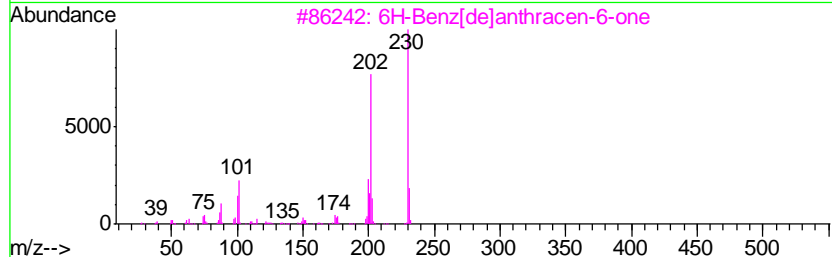
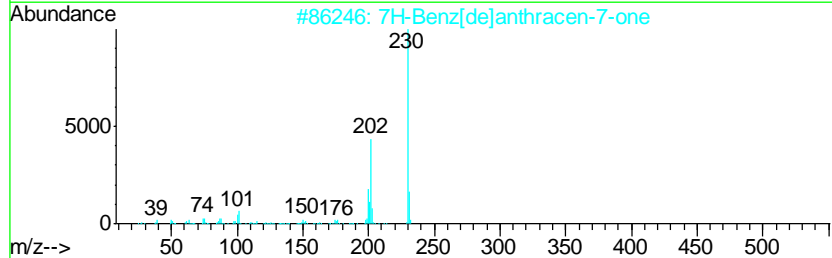
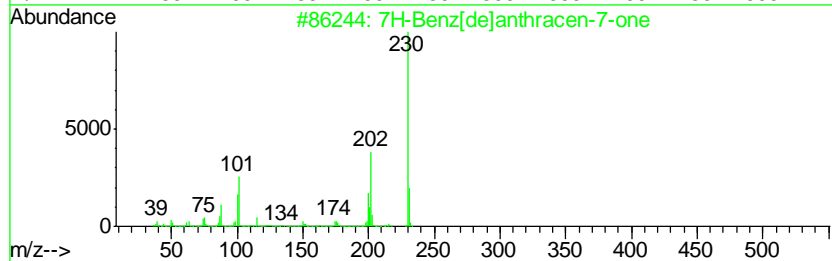
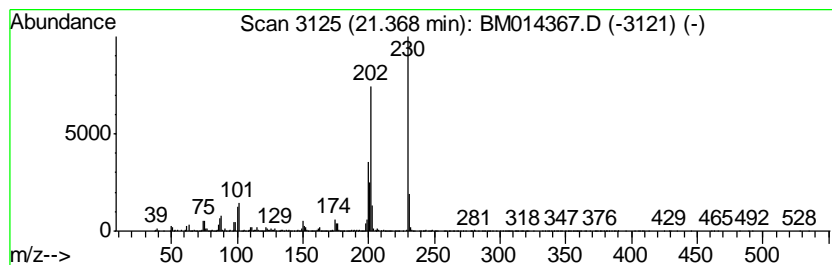
Quant Method : Z:\HPCHEM1\BNA_M\METHODS\SOM-EPA-BM021418.M
 Quant Title : SVOA CALIBRATION

TIC Library : C:\DATABASE\NIST11.L
 TIC Integration Parameters: LSCINT.P

 Peak Number 18 7H-Benz[de]anthracen-7-one Concentration Rank 8

R.T.	EstConc	Area	Relative to ISTD	R.T.
21.37	23.08 ng/ul	5101020	Chrysene-d12	21.16

Hit#	of	Tentative ID	MW	MolForm	CAS#	Qual
1	5	7H-Benz[de]anthracen-7-one	230	C17H10O	000082-05-3	97
2		7H-Benz[de]anthracen-7-one	230	C17H10O	000082-05-3	96
3		6H-Benz[de]anthracen-6-one	230	C17H10O	080252-14-8	96
4		7H-Benz[de]anthracen-7-one	230	C17H10O	000082-05-3	95
5		11H-Benzo[a]fluoren-11-one	230	C17H10O	000479-79-8	91



Data Path : \\74.0.250.170\SVOASRV\HPCHEM1\BNA_M\DATA\BM022618\
 Data File : BM014367.D
 Acq On : 26 Feb 2018 21:36
 Operator : SJ/JU
 Sample : J1631-07
 Misc :
 ALS Vial : 18 Sample Multiplier: 1

Instrument :
 BNA_M
 ClientSampleID :
 BE5Y8

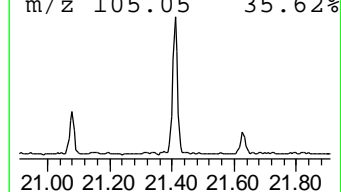
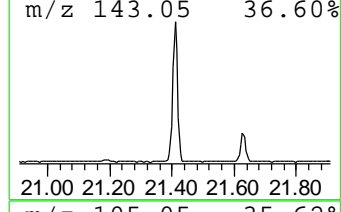
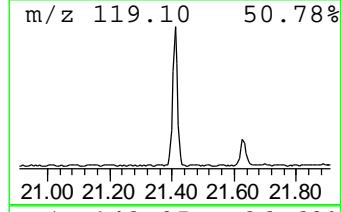
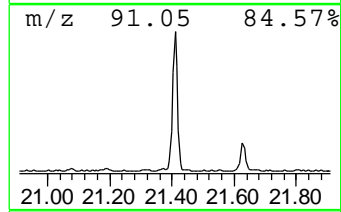
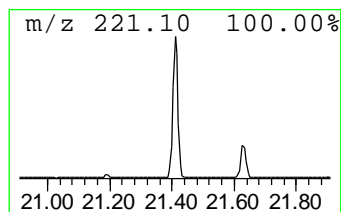
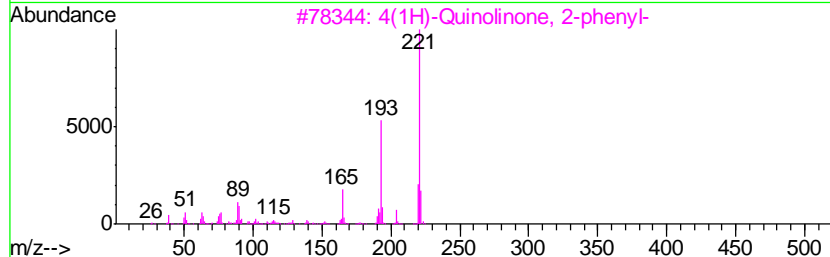
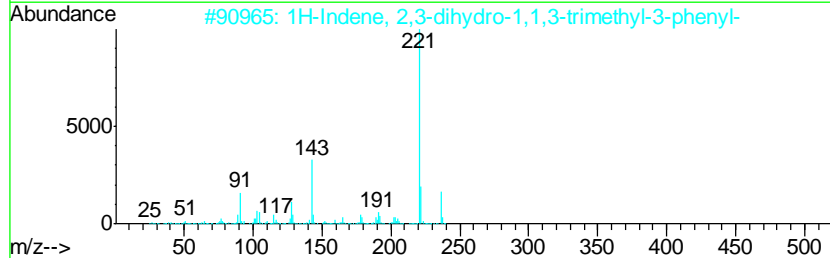
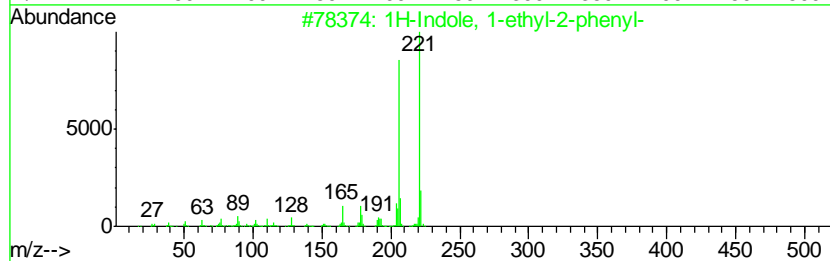
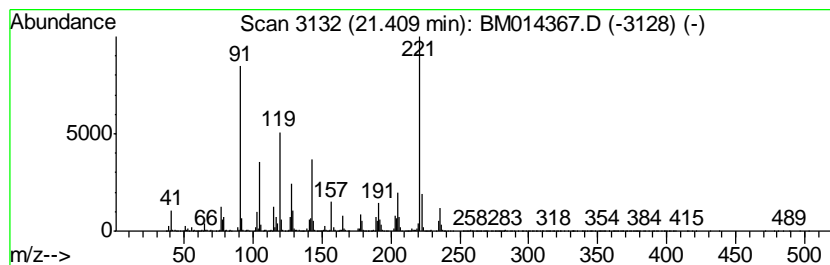
Quant Method : Z:\HPCHEM1\BNA_M\METHODS\SOM-EPA-BM021418.M
 Quant Title : SVOA CALIBRATION

TIC Library : C:\DATABASE\NIST11.L
 TIC Integration Parameters: LSCINT.P

 Peak Number 19 unknown-02 Concentration Rank 5

R.T.	EstConc	Area	Relative to ISTD	R.T.
21.41	40.00 ng/ul	8840160	Chrysene-d12	21.16

Hit#	of	Tentative ID	MW	MolForm	CAS#	Qual
1	5	1H-Indole, 1-ethyl-2-phenyl-	221	C16H15N	013228-39-2	45
2		1H-Indene, 2,3-dihydro-1,1,3-tri...	236	C18H20	003910-35-8	37
3		4(1H)-Quinolinone, 2-phenyl-	221	C15H11NO	014802-18-7	35
4		Benz[j]isoquinoline, 3,6,8-trime...	221	C16H15N	061171-16-2	35
5		4-Hydroxy-beta-phenylcinnamonitrile	221	C15H11NO	016281-90-6	35



Data Path : \\74.0.250.170\SVOASRV\HPCHEM1\BNA_M\DATA\BM022618\
 Data File : BM014367.D
 Acq On : 26 Feb 2018 21:36
 Operator : SJ/JU
 Sample : J1631-07
 Misc :
 ALS Vial : 18 Sample Multiplier: 1

Instrument :
 BNA_M
 ClientSampled :
 BE5Y8

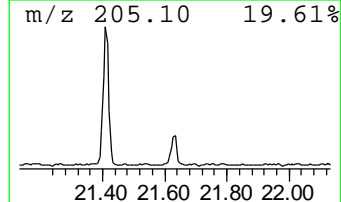
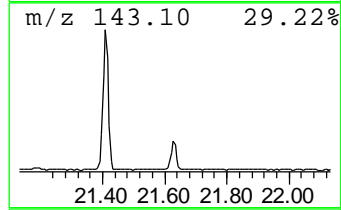
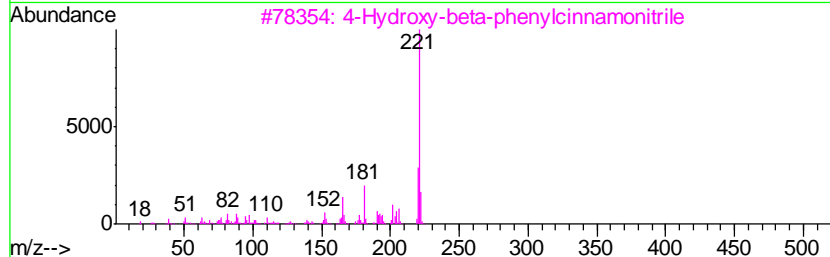
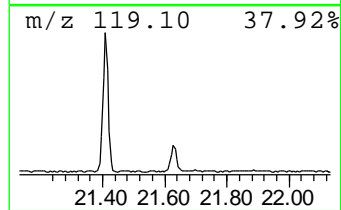
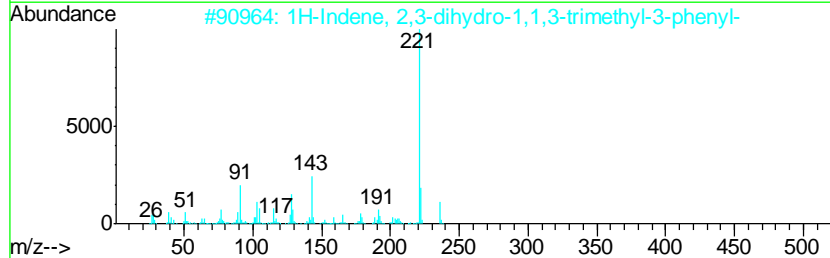
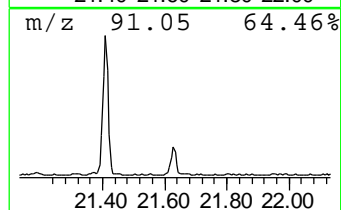
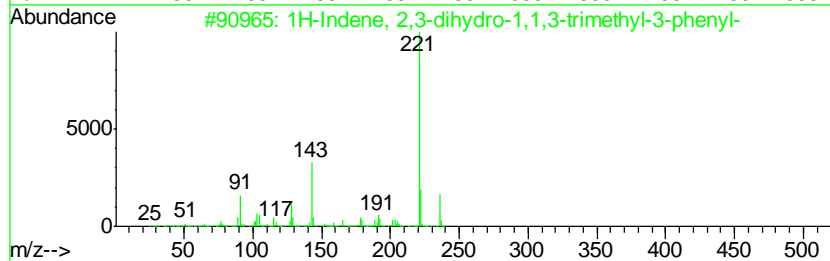
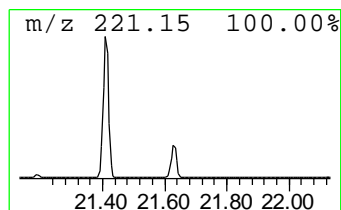
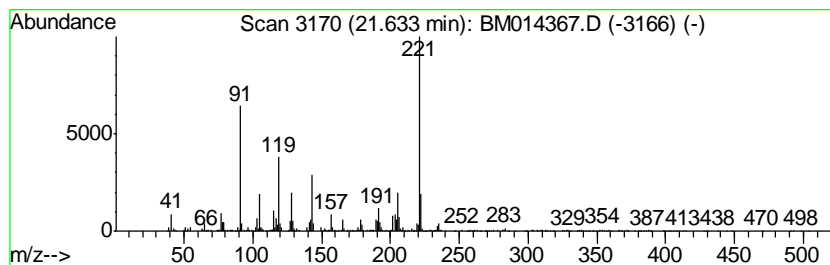
Quant Method : Z:\HPCHEM1\BNA_M\METHODS\SOM-EPA-BM021418.M
 Quant Title : SVOA CALIBRATION

TIC Library : C:\DATABASE\NIST11.L
 TIC Integration Parameters: LSCINT.P

 Peak Number 20 unknown-03 Concentration Rank 14

R.T.	EstConc	Area	Relative to ISTD	R.T.
21.63	7.56 ng/ul	1671830	Chrysene-d12	21.16

Hit#	of	Tentative ID	MW	MolForm	CAS#	Qual
1	5	1H-Indene, 2,3-dihydro-1,1,3-tri...	236	C18H20	003910-35-8	47
2		1H-Indene, 2,3-dihydro-1,1,3-tri...	236	C18H20	003910-35-8	47
3		4-Hydroxy-beta-phenylcinnamitrile	221	C15H11NO	016281-90-6	41
4		1H-Indene, 2,3-dihydro-1,1,3-tri...	236	C18H20	003910-35-8	38
5		N-Methyl-m-hemipimide	221	C11H11NO4	092288-92-1	35



Data Path : \\74.0.250.170\SVOASRV\HPCHEM1\BNA_M\DATA\BM022618\
 Data File : BM014367.D
 Acq On : 26 Feb 2018 21:36
 Operator : SJ/JU
 Sample : J1631-07
 Misc :
 ALS Vial : 18 Sample Multiplier: 1

Instrument :
 BNA_M
 ClientSampled :
 BE5Y8

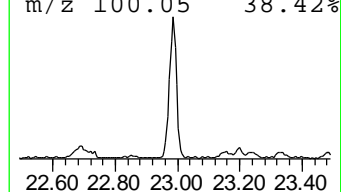
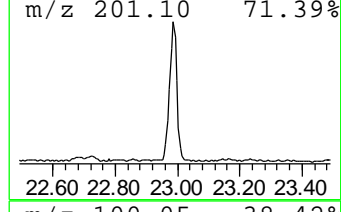
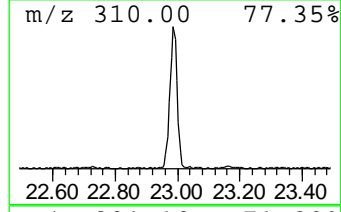
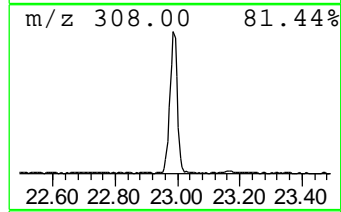
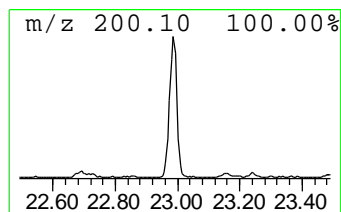
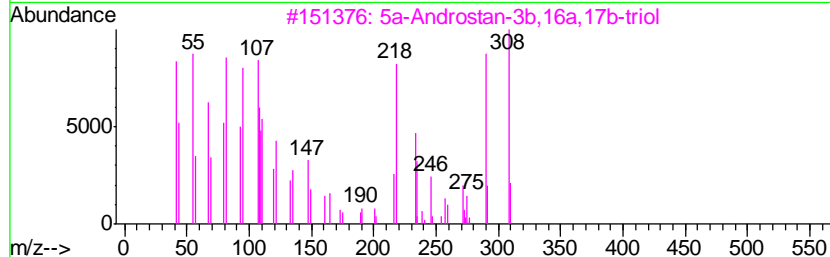
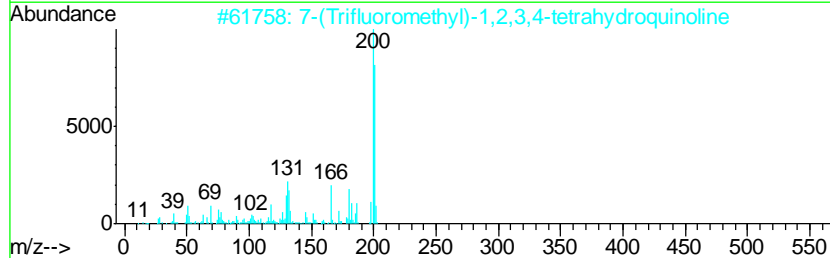
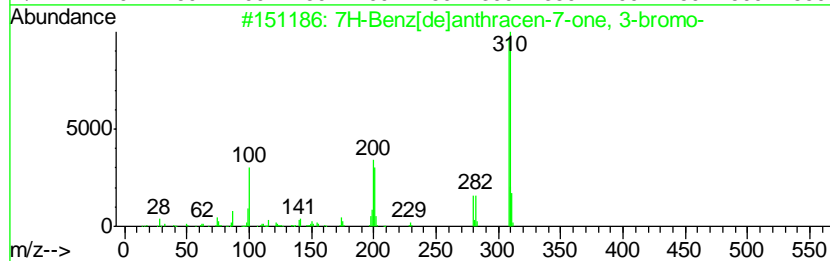
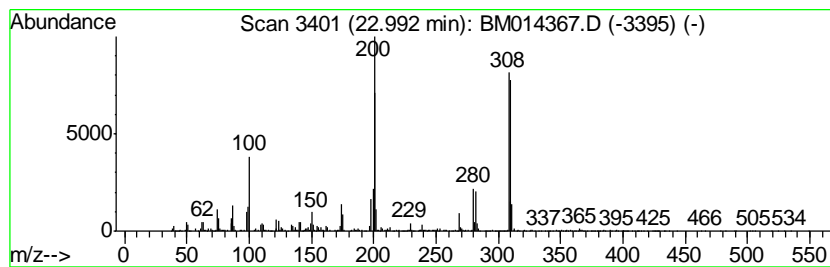
Quant Method : Z:\HPCHEM1\BNA_M\METHODS\SOM-EPA-BM021418.M
 Quant Title : SVOA CALIBRATION

TIC Library : C:\DATABASE\NIST11.L
 TIC Integration Parameters: LSCINT.P

 Peak Number 21 7H-Benz[de]anthracen-7-one,... Concentration Rank 2

R.T.	EstConc	Area	Relative to ISTD	R.T.
22.99	83.01 ng/ul	3478500	Perylene-d12	23.33

Hit#	of	Tentative ID	MW	MolForm	CAS#	Qual
1	5	7H-Benz[de]anthracen-7-one, 3-br...	308	C17H9BrO	000081-96-9	94
2		7-(Trifluoromethyl)-1,2,3,4-tetr...	201	C10H10F3N	1000342-46-2	14
3		5a-Androstan-3b,16a,17b-triol	308	C19H32O3	1000148-75-0	11
4		13-Ethyl-17alpha-ethynyl-17beta-...	308	C21H24O2	1000234-44-4	11
5		Rhodium, [(2,3,5,6-.eta.)-2,5-cy...	310	C11H11O4Rh	032802-01-0	10



Data Path : \\74.0.250.170\SVOASRV\HPCHEM1\BNA_M\DATA\BM022618\
 Data File : BM014367.D
 Acq On : 26 Feb 2018 21:36
 Operator : SJ/JU
 Sample : J1631-07
 Misc :
 ALS Vial : 18 Sample Multiplier: 1

Instrument :
 BNA_M
 ClientSampleID :
 BE5Y8

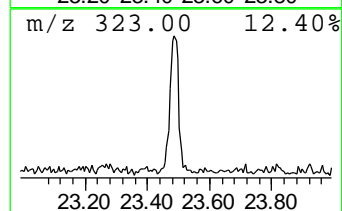
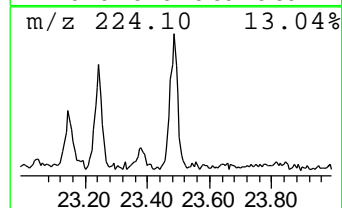
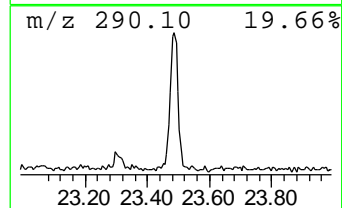
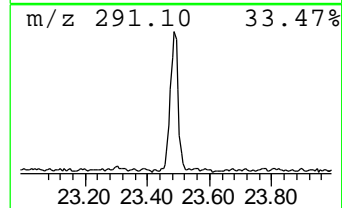
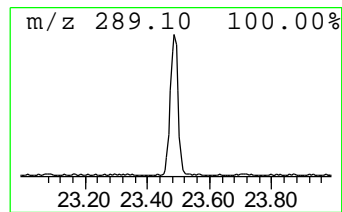
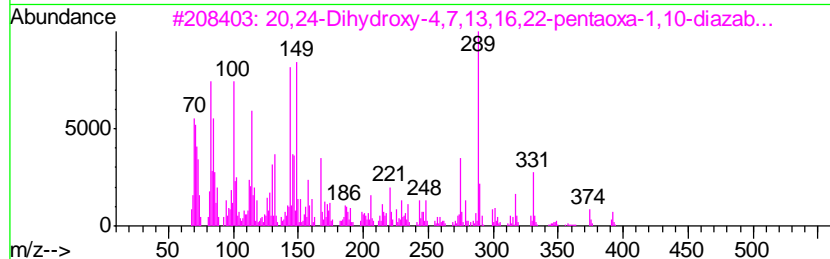
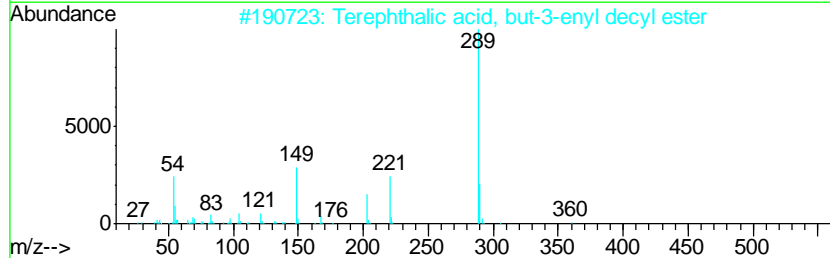
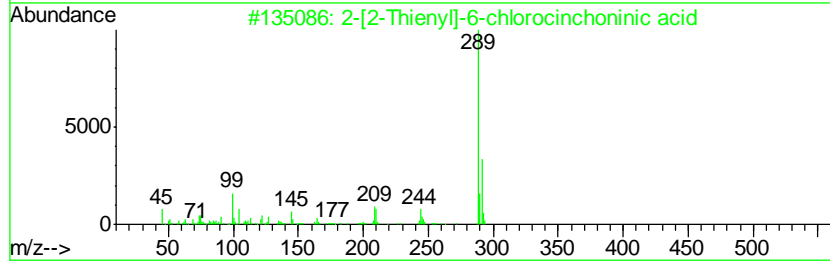
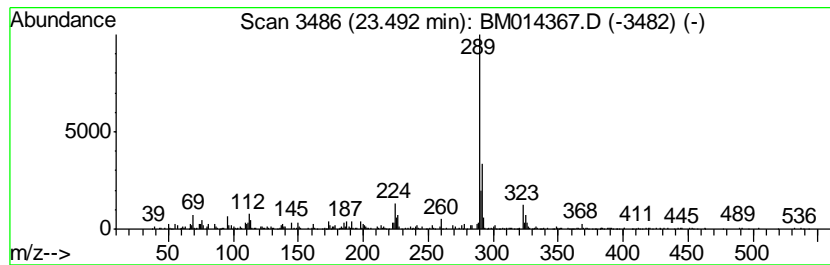
Quant Method : Z:\HPCHEM1\BNA_M\METHODS\SOM-EPA-BM021418.M
 Quant Title : SVOA CALIBRATION

TIC Library : C:\DATABASE\NIST11.L
 TIC Integration Parameters: LSCINT.P

 Peak Number 22 2-[2-Thienyl]-6-chlorocinch... Concentration Rank 6

R.T.	EstConc	Area	Relative to ISTD	R.T.
23.49	29.89 ng/ul	1252730	Perylene-d12	23.33

Hit#	of	Tentative ID	MW	MolForm	CAS#	Qual
1	5	2-[2-Thienyl]-6-chlorocinchonini...	289	C14H8ClNO2S	033289-51-9	59
2		Terephthalic acid, but-3-enyl de...	360	C22H32O4	1000356-34-0	52
3		20,24-Dihydroxy-4,7,13,16,22-pen...	392	C18H36N2O7	129940-64-3	50
4		Terephthalic acid, but-2-enyl de...	360	C22H32O4	1000356-31-8	50
5		2,2'-Isopropylidenebis(3-methylb...	304	C21H20O2	010410-33-0	50



Data Path : \\74.0.250.170\SVOASRV\HPCHEM1\BNA_M\DATA\BM022618\
 Data File : BM014367.D
 Acq On : 26 Feb 2018 21:36
 Operator : SJ/JU
 Sample : J1631-07
 Misc :
 ALS Vial : 18 Sample Multiplier: 1

Instrument :
 BNA_M
 ClientSampleID :
 BE5Y8

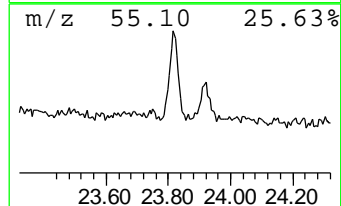
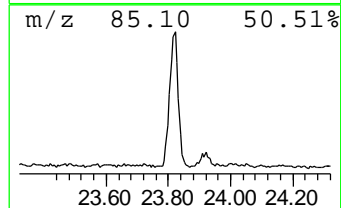
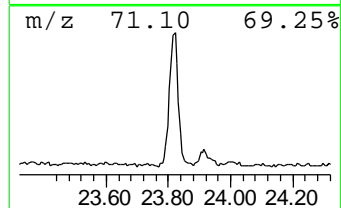
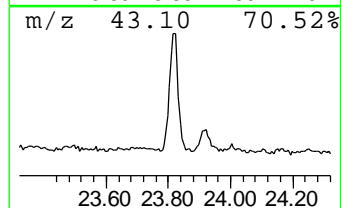
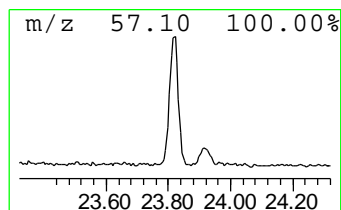
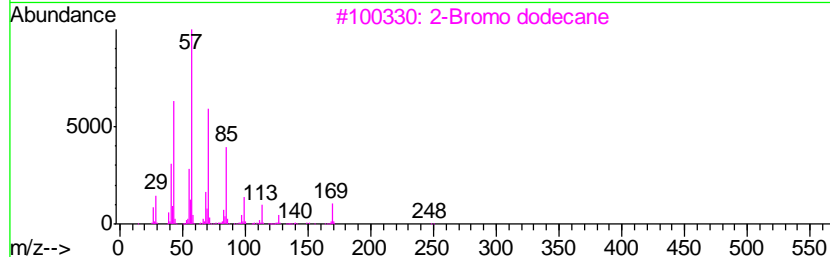
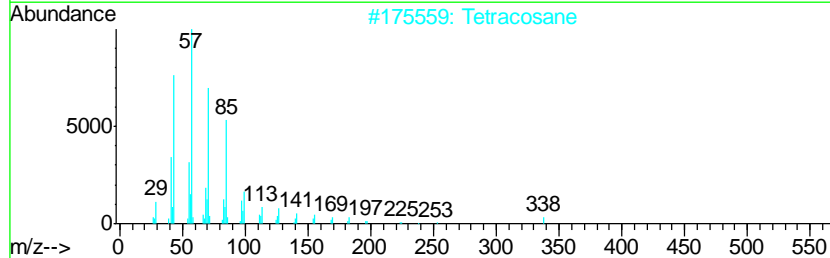
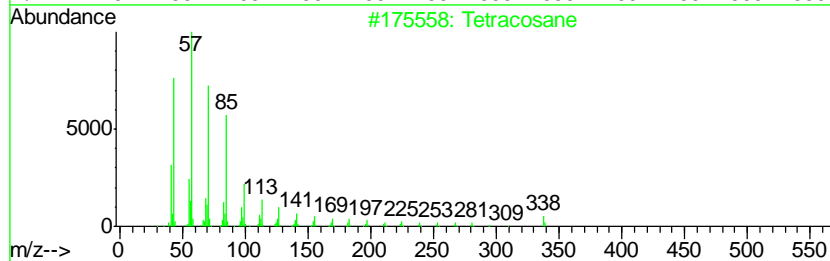
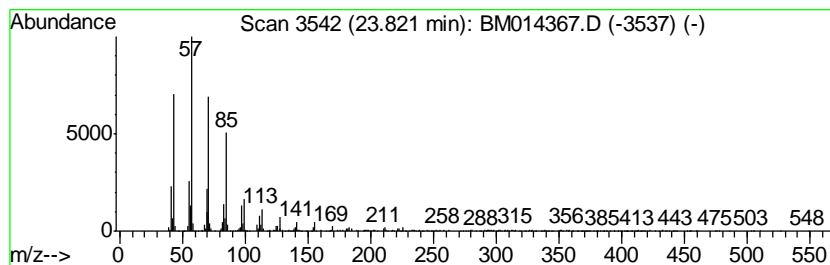
Quant Method : Z:\HPCHEM1\BNA_M\METHODS\SOM-EPA-BM021418.M
 Quant Title : SVOA CALIBRATION

TIC Library : C:\DATABASE\NIST11.L
 TIC Integration Parameters: LSCINT.P

 Peak Number 23 (DEL) Alkane: Straight-Chai... Concentration Rank 3

R.T.	EstConc	Area	Relative to ISTD	R.T.
23.82	59.04 ng/ul	2474060	Perylene-d12	23.33

Hit#	of	Tentative ID	MW	MolForm	CAS#	Qual
1	5	Tetracosane	338	C24H50	000646-31-1	97
2		Tetracosane	338	C24H50	000646-31-1	95
3		2-Bromo dodecane	248	C12H25Br	013187-99-0	93
4		Heptadecane, 9-octyl-	352	C25H52	007225-64-1	90
5		Tetracosane	338	C24H50	000646-31-1	90



Data Path : \\74.0.250.170\SVOASRV\HPCHEM1\BNA_M\DATA\BM022618\
 Data File : BM014367.D
 Acq On : 26 Feb 2018 21:36
 Operator : SJ/JU
 Sample : J1631-07
 Misc :
 ALS Vial : 18 Sample Multiplier: 1

Instrument :
 BNA_M
 ClientSampled :
 BE5Y8

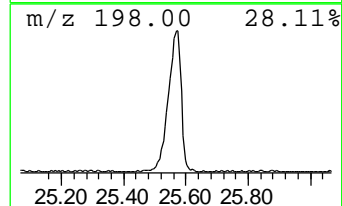
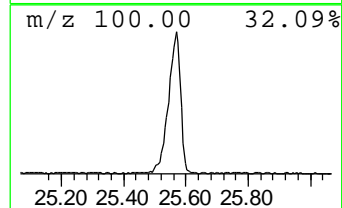
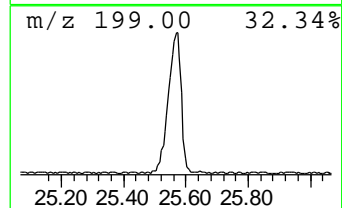
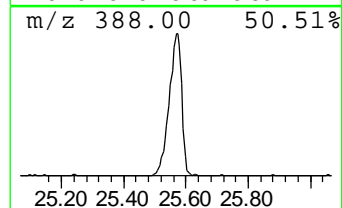
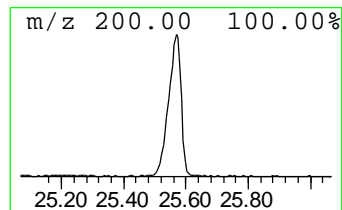
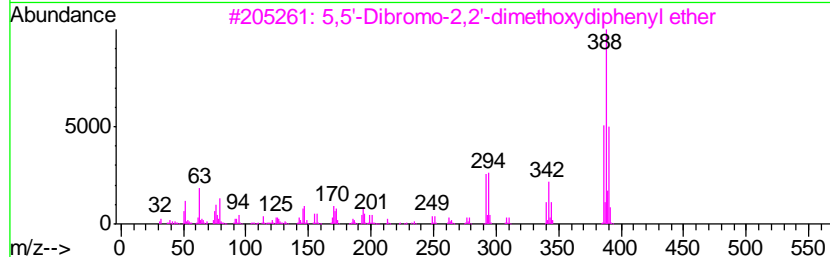
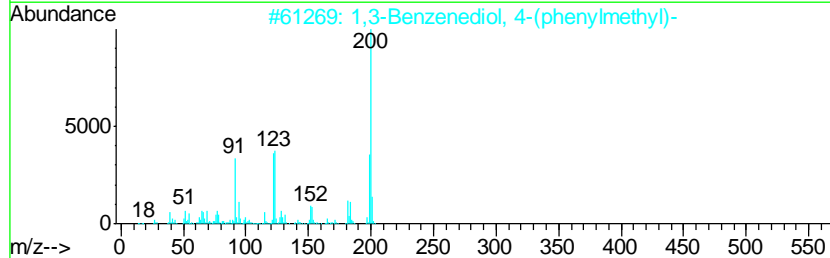
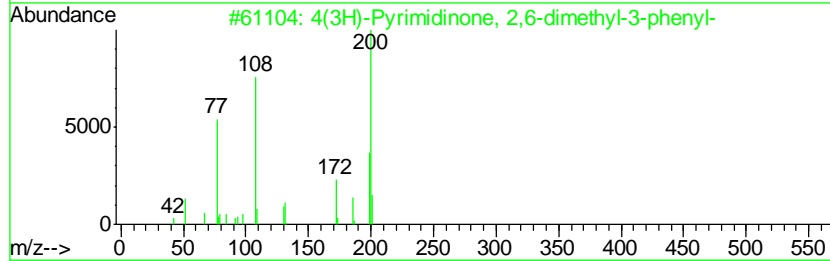
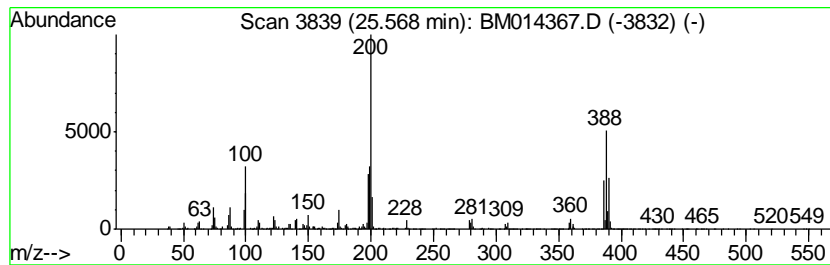
Quant Method : Z:\HPCHEM1\BNA_M\METHODS\SOM-EPA-BM021418.M
 Quant Title : SVOA CALIBRATION

TIC Library : C:\DATABASE\NIST11.L
 TIC Integration Parameters: LSCINT.P

 Peak Number 24 unknown-04 Concentration Rank 1

R.T.	EstConc	Area	Relative to ISTD	R.T.
25.57	212.01 ng/ul	8884310	Perylene-d12	23.33

Hit#	of	Tentative ID	MW	MolForm	CAS#	Qual
1	5	4(3H)-Pyrimidinone, 2,6-dimethyl...	200	C12H12N2O	032363-53-4	30
2		1,3-Benzenediol, 4-(phenylmethyl)-	200	C13H12O2	002284-30-2	27
3		5,5'-Dibromo-2,2'-dimethoxydiphe...	386	C14H12Br2O3	1000318-04-9	22
4		6-Phenyl-1,6-dihydro-furo[3,4-d]...	200	C11H8N2O2	313263-12-6	16
5		2-Aminocaprylic acid, N-propoxyc...	413	C24H47NO4	1000325-42-9	14



Data Path : \\74.0.250.170\SVOASRV\HPCHEM1\BNA_M\DATA\BM022618\
 Data File : BM014367.D
 Acq On : 26 Feb 2018 21:36
 Operator : SJ/JU
 Sample : J1631-07
 Misc :
 ALS Vial : 18 Sample Multiplier: 1

Instrument :
 BNA_M
 ClientSampleID :
 BE5Y8

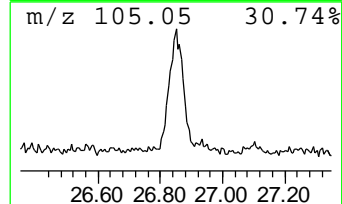
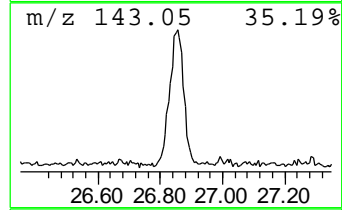
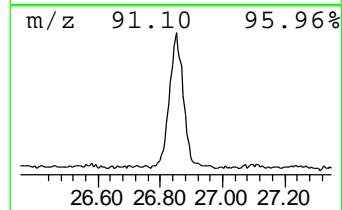
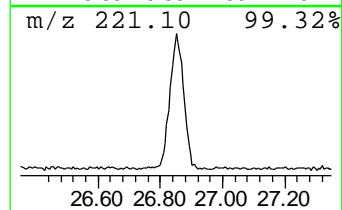
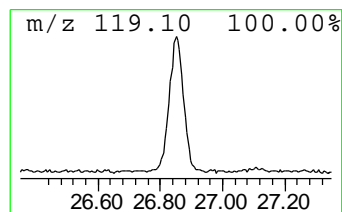
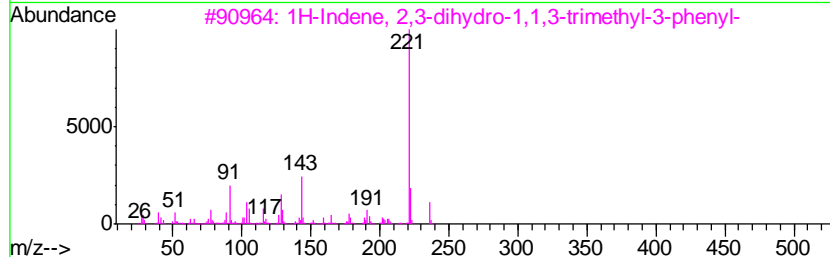
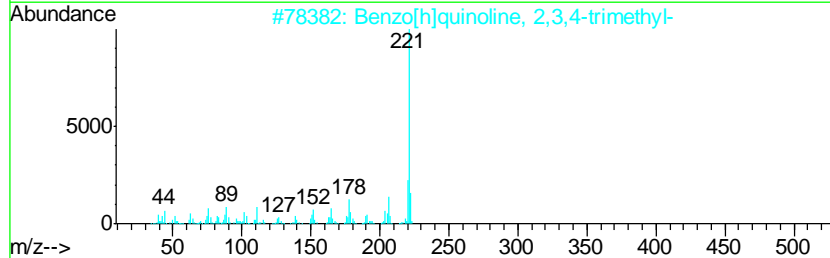
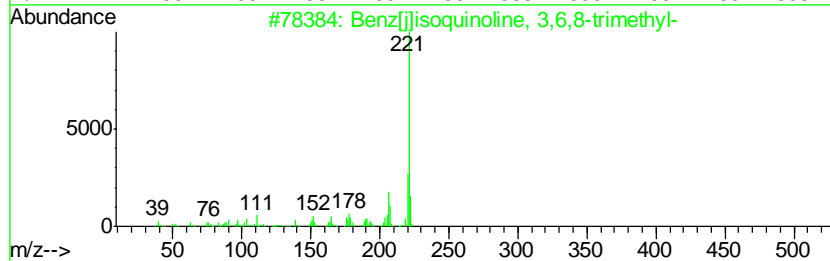
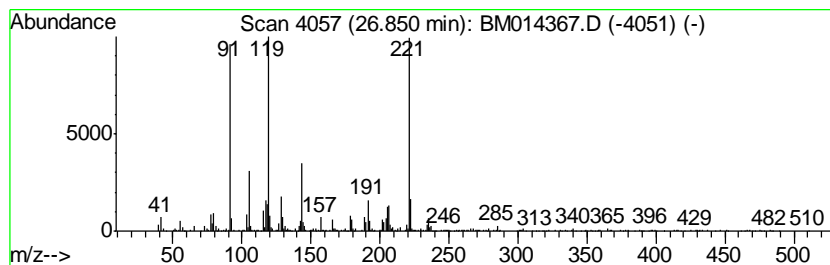
Quant Method : Z:\HPCHEM1\BNA_M\METHODS\SOM-EPA-BM021418.M
 Quant Title : SVOA CALIBRATION

TIC Library : C:\DATABASE\NIST11.L
 TIC Integration Parameters: LSCINT.P

 Peak Number 25 unknown-05 Concentration Rank 4

R.T.	EstConc	Area	Relative to ISTD	R.T.
26.85	55.72 ng/ul	2334820	Perylene-d12	23.33

Hit#	of	Tentative ID	MW	MolForm	CAS#	Qual
1	5	Benz[j]isoquinoline, 3,6,8-trime...	221	C16H15N	061171-16-2	46
2		Benzo[h]quinoline, 2,3,4-trimethyl-	221	C16H15N	063042-66-0	46
3		1H-Indene, 2,3-dihydro-1,1,3-tri...	236	C18H20	003910-35-8	38
4		1H-Indene, 2,3-dihydro-1,1,3-tri...	236	C18H20	003910-35-8	38
5		5H-Dibenzo[a,c]cycloheptene, 6-b...	300	C16H13BrO	1000143-00-4	35



Data Path : \\74.0.250.170\SVOASRV\HPCHEM1\BNA_M\DATA\BM022618\
 Data File : BM014367.D
 Acq On : 26 Feb 2018 21:36
 Operator : SJ/JU
 Sample : J1631-07
 Misc :
 ALS Vial : 18 Sample Multiplier: 1

Instrument :
 BNA_M
 ClientSampleId :
 BE5Y8

Quant Method : Z:\HPCHEM1\BNA_M\METHODS\SOM-EPA-BM021418.M
 Quant Title : SVOA CALIBRATION

TIC Library : C:\DATABASE\NIST11.L
 TIC Integration Parameters: LSCINT.P

TIC Top Hit name	RT	EstConc	Units	Response	--Internal Standard--			
					#	RT	Resp	Conc
unknown-01	4.68	4.5	ng/ul	253371	1	7.52	1128710	20.0
Benzene, 1-ethyl-...	7.17	2.8	ng/ul	156313	1	7.52	1128710	20.0
Benzene, 1-ethyl-...	8.15	3.2	ng/ul	180785	1	7.52	1128710	20.0
(DEL) Alkane: Str...	15.91	3.8	ng/ul	450765	4	16.94	2382080	20.0
2(1H)-Quinolinone...	16.24	2.7	ng/ul	319518	4	16.94	2382080	20.0
Dibenzothiophene	16.76	2.1	ng/ul	251896	4	16.94	2382080	20.0
1H-Cyclopropa[l]p...	17.82	2.3	ng/ul	277382	4	16.94	2382080	20.0
n-Hexadecanoic acid	17.86	24.2	ng/ul	2887340	4	16.94	2382080	20.0
4H-Cyclopenta[def...	18.02	9.6	ng/ul	1144420	4	16.94	2382080	20.0
Benzo[c]cinnoline	18.38	11.8	ng/ul	1399460	4	16.94	2382080	20.0
2,3',4,5-Tetrachl...	18.89	6.9	ng/ul	820876	4	16.94	2382080	20.0
Octadecanoic acid	19.15	8.3	ng/ul	1823220	5	21.16	4420410	20.0
10H-Phenothiazine...	20.20	13.6	ng/ul	2998990	5	21.16	4420410	20.0
(DEL) Alkane: Cyc...	20.87	6.9	ng/ul	1518160	5	21.16	4420410	20.0
11H-Benzo[a]fluor...	20.94	2.7	ng/ul	589754	5	21.16	4420410	20.0
7H-Benz[de]anthra...	21.37	23.1	ng/ul	5101020	5	21.16	4420410	20.0
unknown-02	21.41	40.0	ng/ul	8840160	5	21.16	4420410	20.0
unknown-03	21.63	7.6	ng/ul	1671830	5	21.16	4420410	20.0
7H-Benz[de]anthra...	22.99	83.0	ng/ul	3478500	6	23.33	838114	20.0
2-[2-Thienyl]-6-c...	23.49	29.9	ng/ul	1252730	6	23.33	838114	20.0
(DEL) Alkane: Str...	23.82	59.0	ng/ul	2474060	6	23.33	838114	20.0
unknown-04	25.57	212.0	ng/ul	8884310	6	23.33	838114	20.0
unknown-05	26.85	55.7	ng/ul	2334820	6	23.33	838114	20.0