

Data Path : Z:\HPCHEM1\BNA M\DATA\BM022718\  
 Data File : BM014379.D  
 Acq On : 27 Feb 2018 13:00  
 Operator : SJ/JU  
 Sample : J1631-03  
 Misc :  
 ALS Vial : 3 Sample Multiplier: 1

Instrument :  
 BNA\_M  
 ClientSampled :  
 BE5Y6

Manual Integrations  
 APPROVED

Sohil  
 2/28/2018 1:59:00 PM

Quant Time: Mar 09 05:43:02 2018  
 Quant Method : Z:\HPCHEM1\BNA M\METHODS\SOM-EPA-BM021418.M  
 Quant Title : SVOA CALIBRATION  
 QLast Update : Tue Feb 27 03:22:24 2018  
 Response via : Initial Calibration

Internal Standards	R.T.	QIon	Response	Conc	Units	Dev(Min)
1) 1,4-Dichlorobenzene-d4	7.52	152	93623	20.00	ng/ul	0.00
18) Naphthalene-d8	10.29	136	399419	20.00	ng/ul	0.00
35) Acenaphthene-d10	14.17	164	227990	20.00	ng/ul	0.00
61) Phenanthrene-d10	16.94	188	493902	20.00	ng/ul	0.00
75) Chrysene-d12	21.15	240	484872	20.00	ng/ul	0.00
83) Perylene-d12	23.33	264	457852	20.00	ng/ul	0.00

## System Monitoring Compounds

3) 1,4-Dioxane-d8	3.09	96	11500	5.26	ng/uL	-0.01
5) Phenol-d5	6.72	99	203553	25.73	ng/ul	0.00
7) Bis-(2-Chloroethyl)ether-d	6.87	67	130643	27.27	ng/ul	0.00
9) 2-Chlorophenol-d4	7.06	132	168878	27.83	ng/ul	0.00
13) 4-Methylphenol-d8	8.25	113	141056	20.37	ng/ul	0.00
19) Nitrobenzene-d5	8.67	128	89734	30.40	ng/ul	0.00
22) 2-Nitrophenol-d4	9.39	143	97560	31.93	ng/ul	0.00
26) 2,4-Dichlorophenol-d3	9.93	165	172577	27.27	ng/ul	0.00
29) 4-Chloroaniline-d4	10.46	131	68417	10.97	ng/ul	0.01
43) Dimethylphthalate-d6	13.60	166	569562	30.25	ng/ul	0.00
46) Acenaphthylene-d8	13.87	160	733388	31.59	ng/ul	0.00
51) 4-Nitrophenol-d4	14.46	143	41771	16.07	ng/ul	0.02
57) Fluorene-d10	15.18	176	478785	28.38	ng/ul	0.00
62) 4,6-Dinitro-2-methylphenol	15.34	200	40555	13.69	ng/ul	0.01
70) Anthracene-d10	17.04	188	740141	31.06	ng/ul	0.00
76) Pyrene-d10	19.34	212	776361	31.04	ng/ul	0.00
87) Benzo(a)pyrene-d12	23.19	264	691870	31.05	ng/ul	0.01

## Target Compounds

Target Compounds	R.T.	QIon	Response	Conc	Units	Ovalue
6) Phenol	6.75	94	13172m	1.586	ng/ul	
14) Acetophenone	8.35	105	77858	6.518	ng/ul#	93
28) Naphthalene	10.34	128	54496	2.656	ng/ul	98
44) Dimethylphthalate	13.64	163	166913	8.990	ng/ul	98
47) Acenaphthylene	13.90	152	57328	2.612	ng/ul	95
49) Acenaphthene	14.24	153	55812	3.612	ng/ul	87
53) Dibenzofuran	14.59	168	55544	2.397	ng/ul	98
58) Fluorene	15.23	166	76962	3.848	ng/ul	92
69) Phenanthrene	16.98	178	1587089	55.772	ng/ul	99
71) Anthracene	17.07	178	349863	12.225	ng/ul	98
72) Carbazole	17.36	167	108938	4.527	ng/ul	98
73) Di-n-butylphthalate	17.92	149	42535	1.370	ng/ul	99
74) Fluoranthene	19.02	202	2750787	80.910	ng/ul#	93
77) Pyrene	19.38	202	2536092	78.704	ng/ul#	94
80) Benzo(a)anthracene	21.14	228	1406750	46.487	ng/ul	98
82) Chrysene	21.19	228	1309972	46.404	ng/ul	97
85) Benzo(b)fluoranthene	22.69	252	1730647	56.452	ng/ul#	96
86) Benzo(k)fluoranthene	22.72	252	575253m	19.736	ng/ul	
88) Benzo(a)pyrene	23.24	252	1219371	44.511	ng/ul#	98
89) Indeno(1,2,3-cd)pyrene	25.49	276	798789	30.048	ng/ul#	97
90) Dibenz(a,h)anthracene	25.49	278	227730	10.310	ng/ul#	91
91) Benzo(a,h,i)perylene	26.16	276	595307	27.644	ng/ul#	97

Data Path : Z:\HPCHEM1\BNA M\DATA\BM022718\  
Data File : BM014379.D  
Acq On : 27 Feb 2018 13:00  
Operator : SJ/JU  
Sample : J1631-03  
Misc :  
ALS Vial : 3 Sample Multiplier: 1

**Instrument :**  
BNA\_M  
**ClientSampleId :**  
BE5Y6

**Manual Integrations**  
**APPROVED**  
Sohil  
2/28/2018 1:59:00 PM

Quant Time: Mar 09 05:43:02 2018  
Quant Method : Z:\HPCHEM1\BNA M\METHODS\SOM-EPA-BM021418.M  
Quant Title : SVOA CALIBRATION  
QLast Update : Tue Feb 27 03:22:24 2018  
Response via : Initial Calibration

Internal Standards R.T. QIon Response Conc Units Dev(Min)  
-----

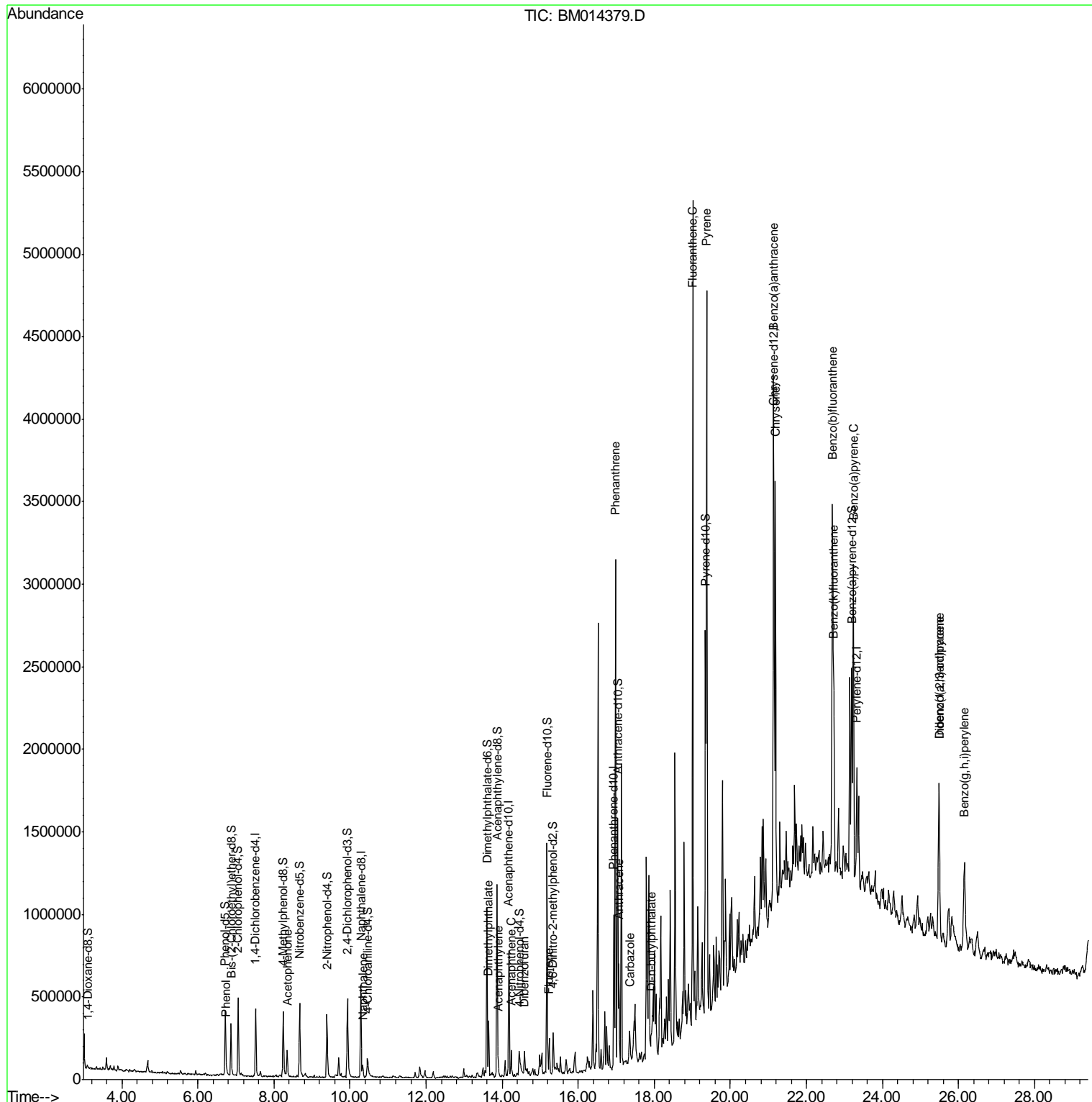
(#) = qualifier out of range (m) = manual integration (+) = signals summed

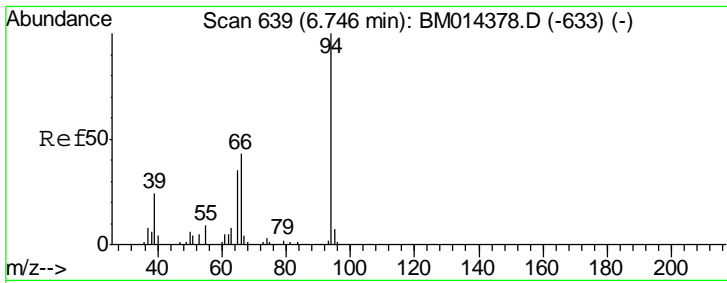
Data Path : Z:\HPCHEM1\BNA M\DATA\BM022718\  
 Data File : BM014379.D  
 Acq On : 27 Feb 2018 13:00  
 Operator : SJ/JU  
 Sample : J1631-03  
 Misc :  
 ALS Vial : 3 Sample Multiplier: 1

Instrument :  
 BNA\_M  
 Client Sampled :  
 BE5Y6

Quant Time: Mar 09 05:43:02 2018  
 Quant Method : Z:\HPCHEM1\BNA M\METHODS\SOM-EPA-BM021418.M  
 Quant Title : SVOA CALIBRATION  
 QLast Update : Tue Feb 27 03:22:24 2018  
 Response via : Initial Calibration

Manual Integrations  
**APPROVED**  
 Sohil  
 2/28/2018 1:59:00 PM





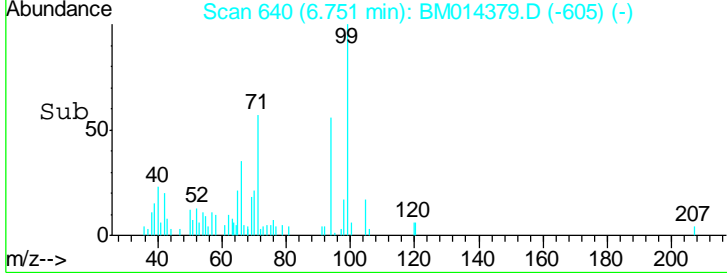
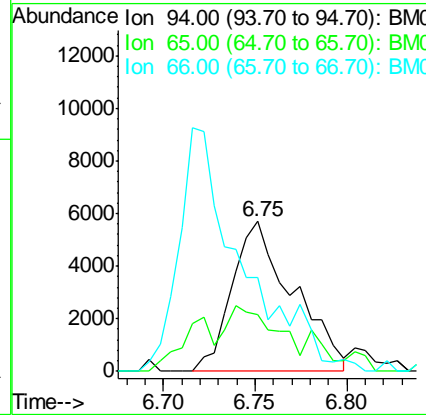
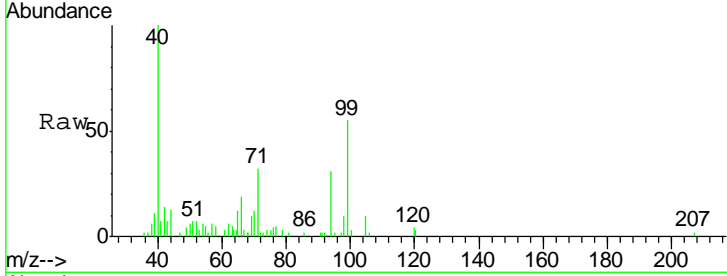
#6  
 Phenol  
 Concen: 1.586 ng/ul m  
 RT: 6.75 min Scan# 640  
 Delta R.T. 0.01 min  
 Lab File: BM014379.D  
 Acq: 27 Feb 2018 13:00

**Instrument :**  
 BNA\_M  
**ClientSampled :**  
 BE5Y6

Tgt Ion	Resp	Lower	Upper
94	13172		
65	37.7	28.2	42.4
66	62.5	47.2	70.8

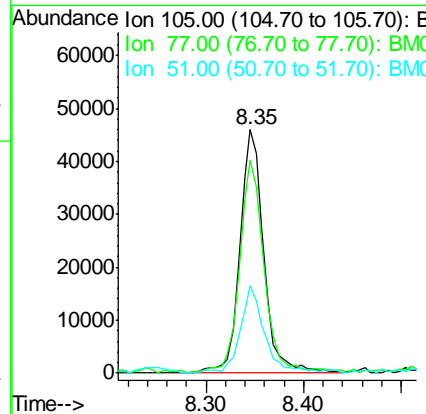
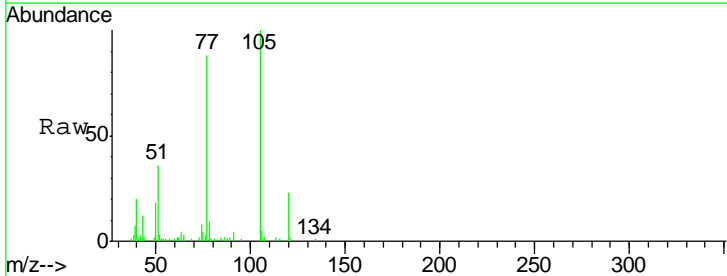
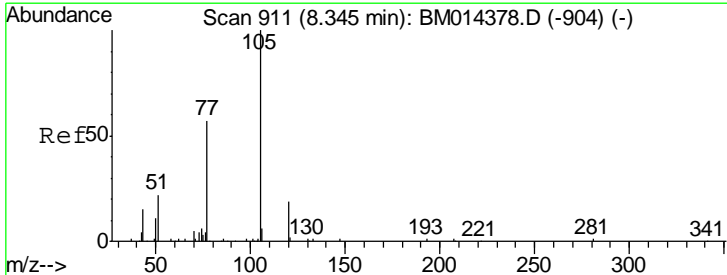
**Manual Integrations**  
**APPROVED**

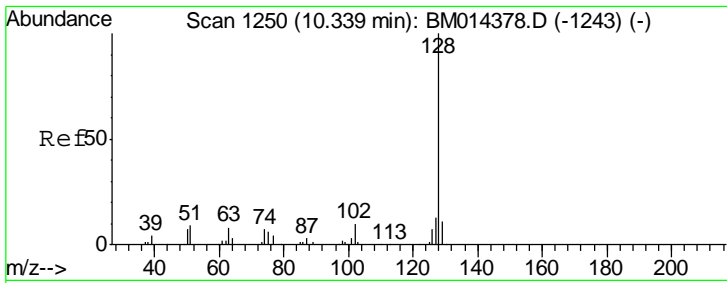
Sohil  
 2/28/2018 1:59:00 PM



#14  
 Acetophenone  
 Concen: 6.518 ng/ul  
 RT: 8.35 min Scan# 911  
 Delta R.T. -0.01 min  
 Lab File: BM014379.D  
 Acq: 27 Feb 2018 13:00

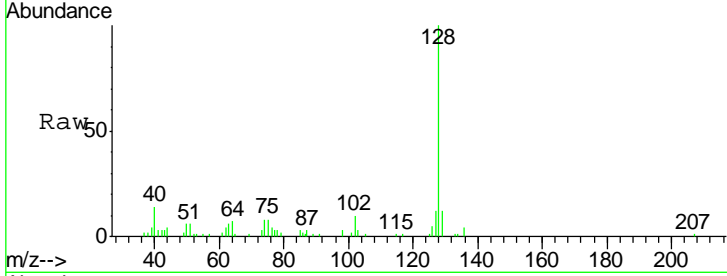
Tgt Ion	Resp	Lower	Upper
105	77858		
77	87.7	74.2	111.4
51	36.1	23.4	35.2#





#28  
 Naphthalene  
 Concen: 2.656 ng/ul  
 RT: 10.34 min Scan# 1250  
 Delta R.T. -0.00 min  
 Lab File: BM014379.D  
 Acq: 27 Feb 2018 13:00

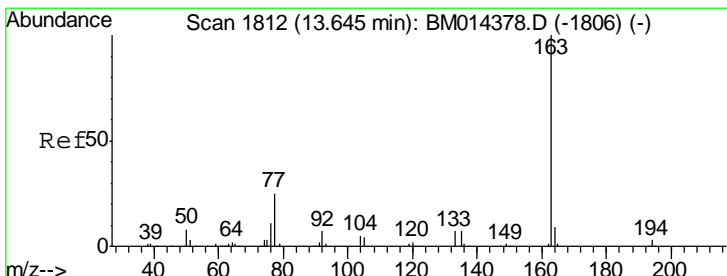
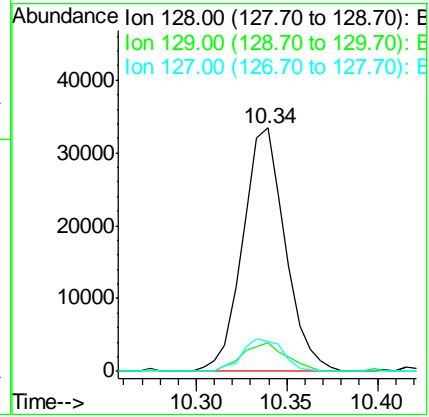
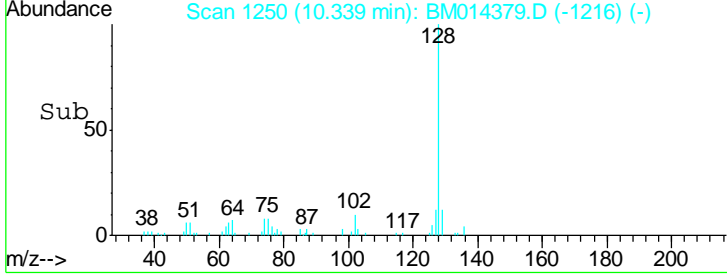
**Instrument :**  
 BNA\_M  
**Client Sampled :**  
 BE5Y6



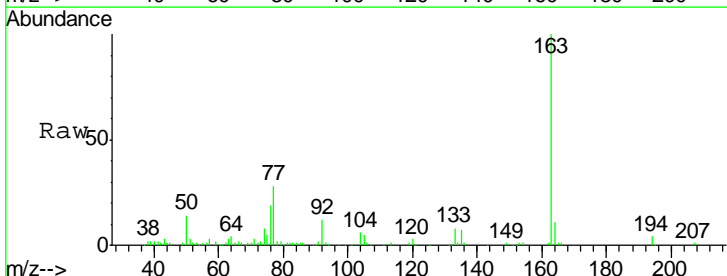
Tgt Ion: 128 Resp: 54496

Ion	Ratio	Lower	Upper
128	100		
129	11.6	8.8	13.2
127	12.2	10.6	16.0

**Manual Integrations**  
**APPROVED**  
 Sohil  
 2/28/2018 1:59:00 PM

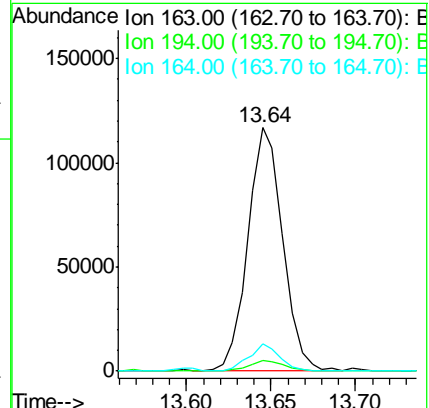
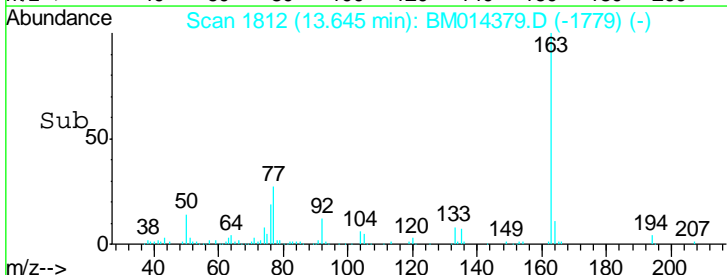


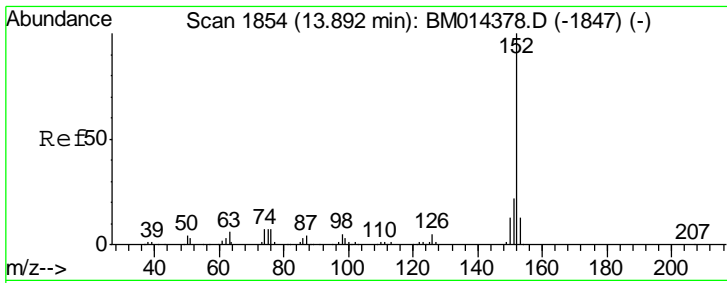
#44  
 Dimethylphthalate  
 Concen: 8.990 ng/ul  
 RT: 13.64 min Scan# 1812  
 Delta R.T. -0.01 min  
 Lab File: BM014379.D  
 Acq: 27 Feb 2018 13:00



Tgt Ion: 163 Resp: 166913

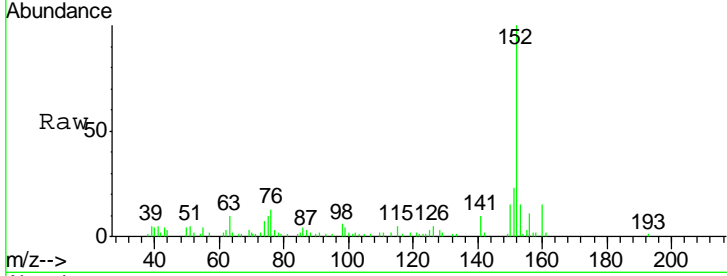
Ion	Ratio	Lower	Upper
163	100		
194	4.4	3.5	5.3
164	11.3	8.2	12.4





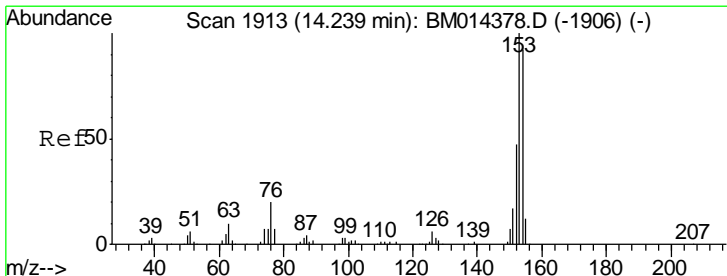
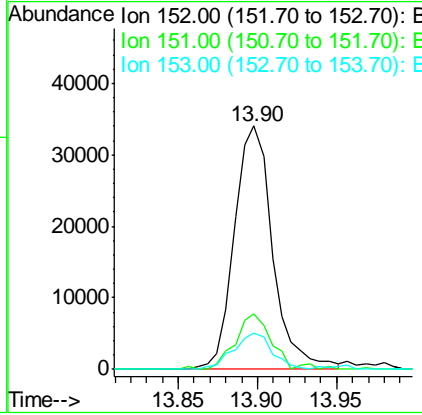
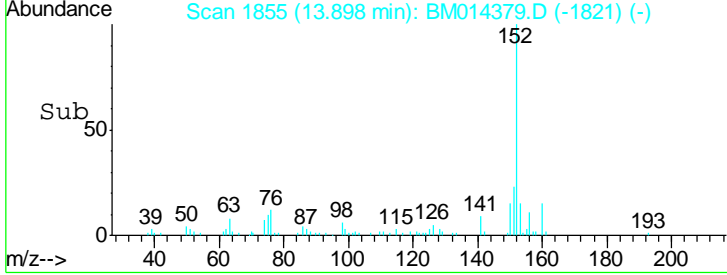
#47  
 Acenaphthylene  
 Concen: 2.612 ng/ul  
 RT: 13.90 min Scan# 1855  
 Delta R.T. -0.00 min  
 Lab File: BM014379.D  
 Acq: 27 Feb 2018 13:00

**Instrument :**  
 BNA\_M  
**ClientSampled :**  
 BE5Y6

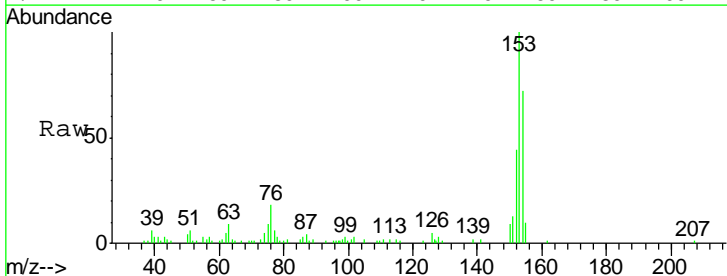


Tgt Ion	Resp	Lower	Upper
152	100		
151	22.9	16.3	24.5
153	14.9	10.2	15.4

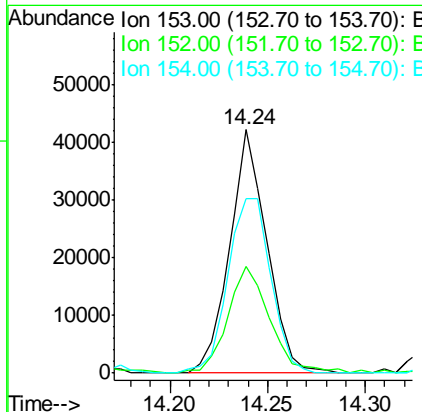
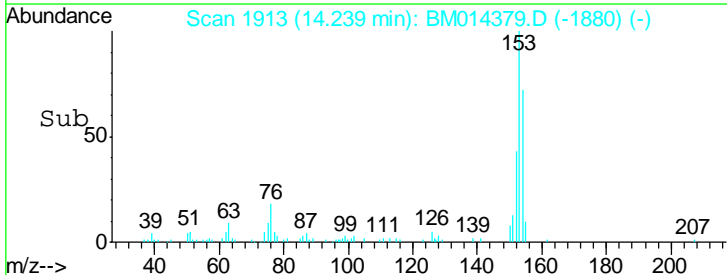
**Manual Integrations**  
**APPROVED**  
 Sohil  
 2/28/2018 1:59:00 PM

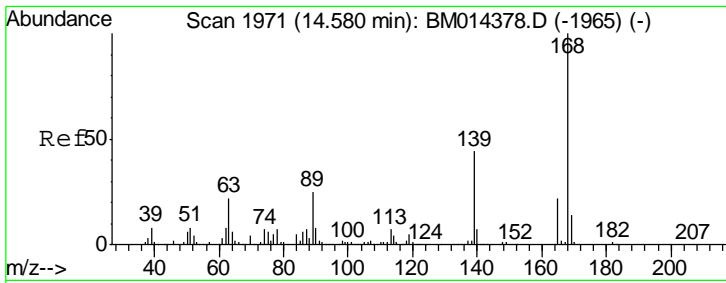


#49  
 Acenaphthene  
 Concen: 3.612 ng/ul  
 RT: 14.24 min Scan# 1913  
 Delta R.T. -0.01 min  
 Lab File: BM014379.D  
 Acq: 27 Feb 2018 13:00



Tgt Ion	Resp	Lower	Upper
153	100		
152	43.6	37.6	56.4
154	71.7	70.4	105.6



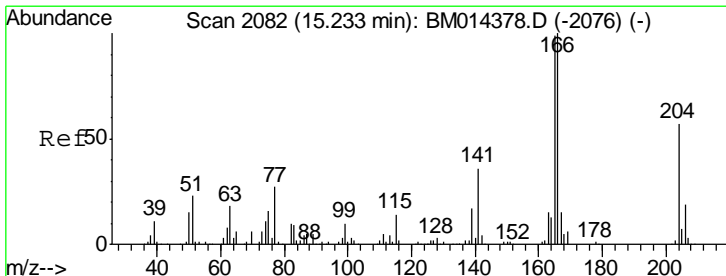
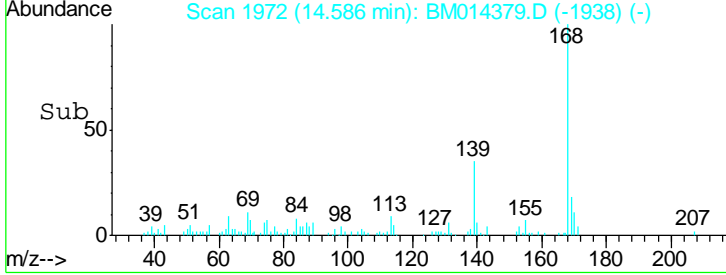
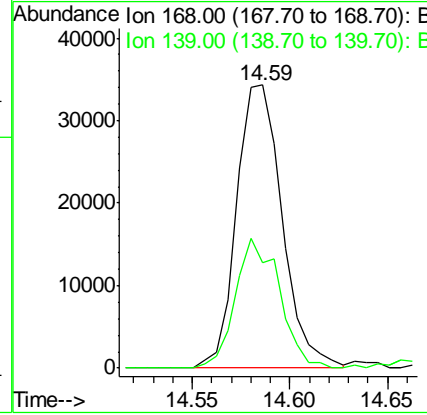
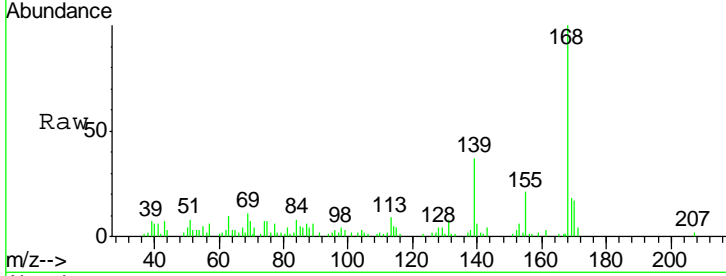


#53  
 Dibenzofuran  
 Concen: 2.397 ng/ul  
 RT: 14.59 min Scan# 1972  
 Delta R.T. -0.00 min  
 Lab File: BM014379.D  
 Acq: 27 Feb 2018 13:00

Instrument :  
 BNA\_M  
 ClientSampled :  
 BE5Y6

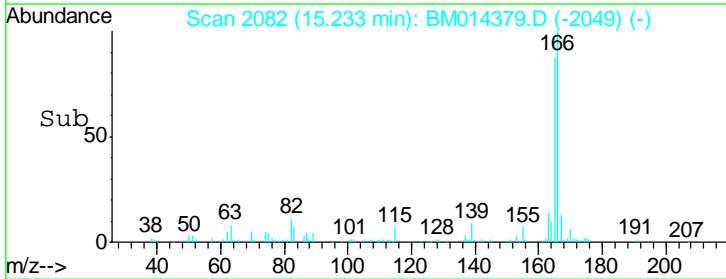
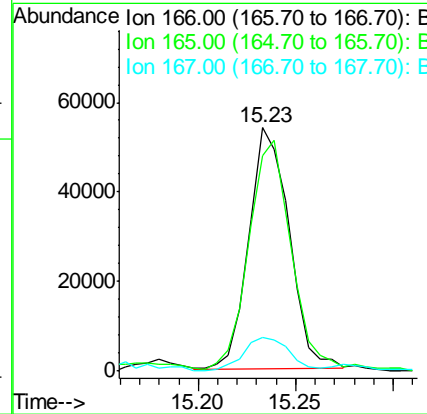
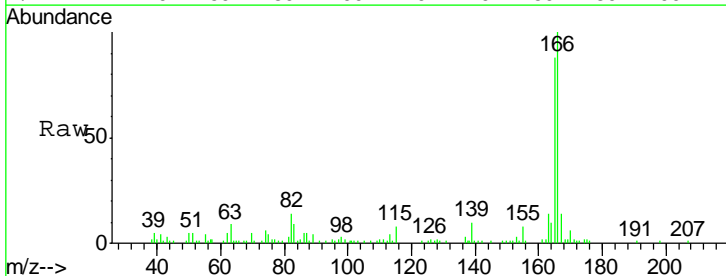
Tgt Ion	Resp	Lower	Upper
168	100		
139	37.4	30.8	46.2

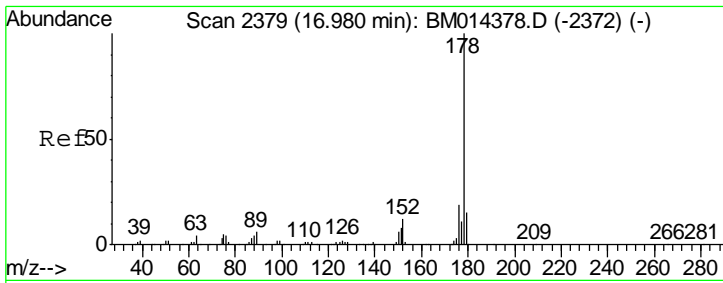
Manual Integrations  
**APPROVED**  
 Sohil  
 2/28/2018 1:59:00 PM



#58  
 Fluorene  
 Concen: 3.848 ng/ul  
 RT: 15.23 min Scan# 2082  
 Delta R.T. -0.01 min  
 Lab File: BM014379.D  
 Acq: 27 Feb 2018 13:00

Tgt Ion	Resp	Lower	Upper
166	100		
165	88.3	77.9	116.9
167	13.8	10.6	16.0





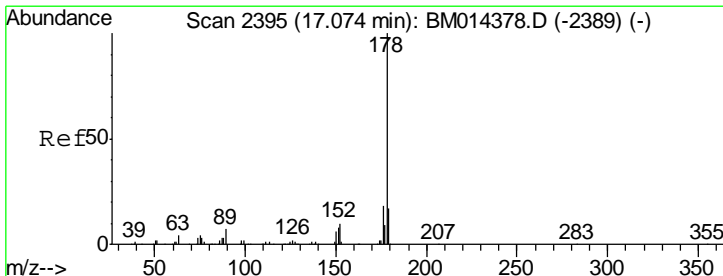
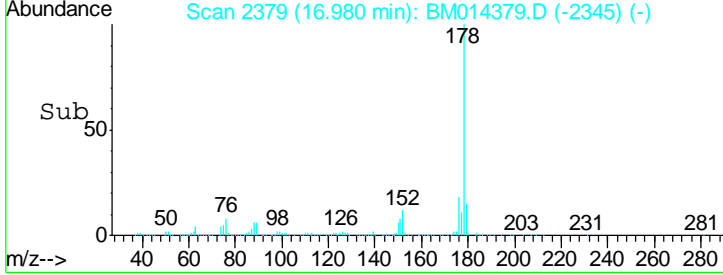
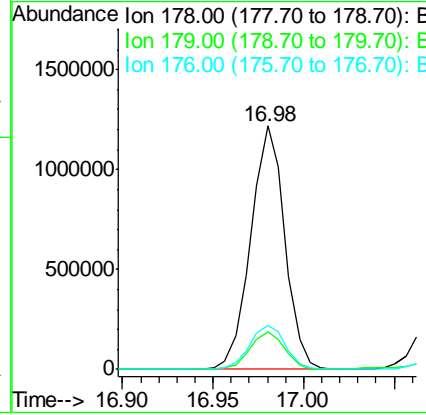
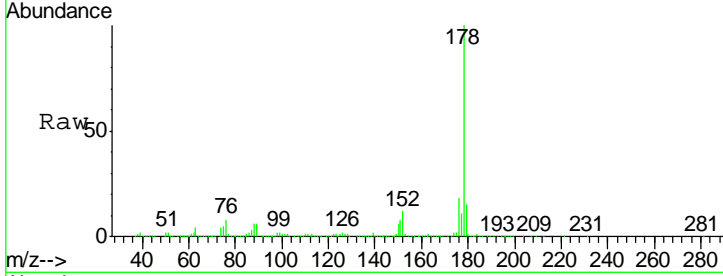
#69  
 Phenanthrene  
 Concen: 55.772 ng/ul  
 RT: 16.98 min Scan# 2379  
 Delta R.T. -0.00 min  
 Lab File: BM014379.D  
 Acq: 27 Feb 2018 13:00

**Instrument :**  
 BNA\_M  
**Client Sampled :**  
 BE5Y6

Tgt Ion	Resp	Lower	Upper
178	1587089		
179	15.2	12.6	19.0
176	18.3	14.9	22.3

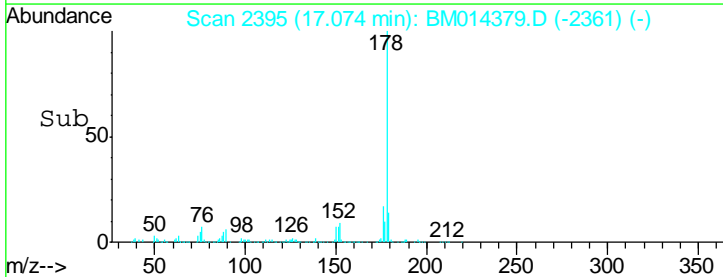
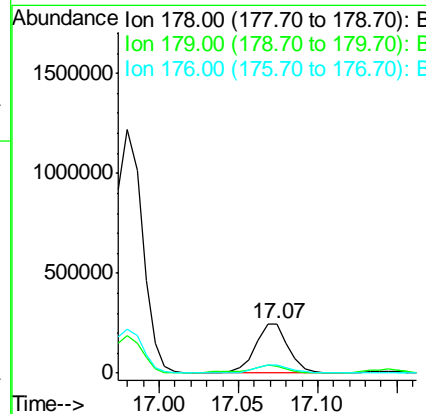
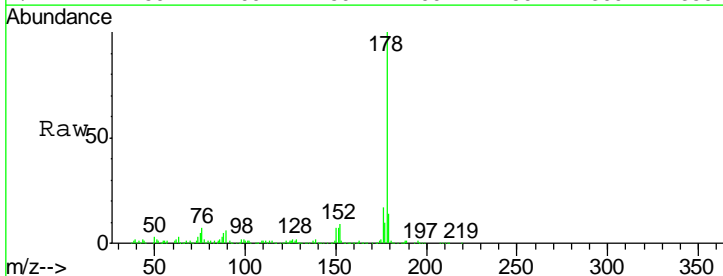
**Manual Integrations**  
**APPROVED**

Sohil  
 2/28/2018 1:59:00 PM

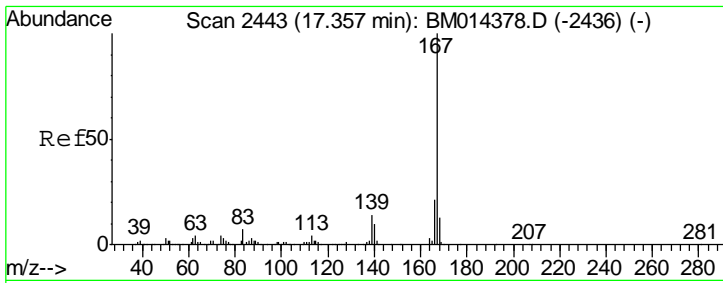


#71  
 Anthracene  
 Concen: 12.225 ng/ul  
 RT: 17.07 min Scan# 2395  
 Delta R.T. -0.00 min  
 Lab File: BM014379.D  
 Acq: 27 Feb 2018 13:00

Tgt Ion	Resp	Lower	Upper
178	349863		
179	13.6	11.7	17.5
176	17.1	14.6	21.8







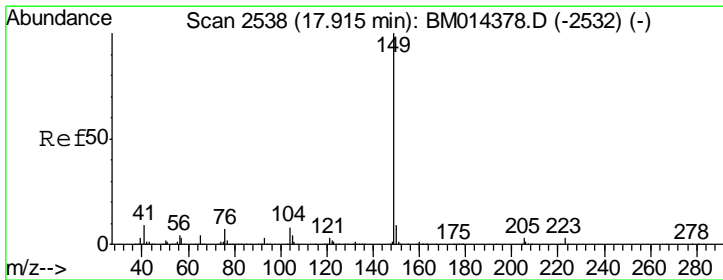
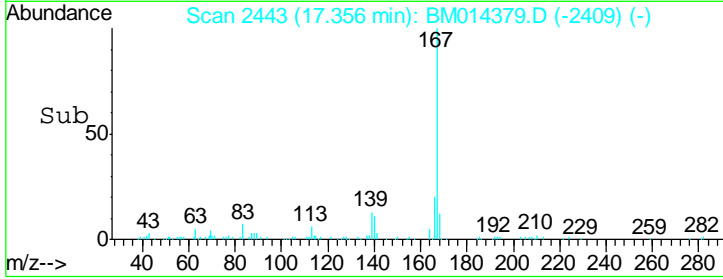
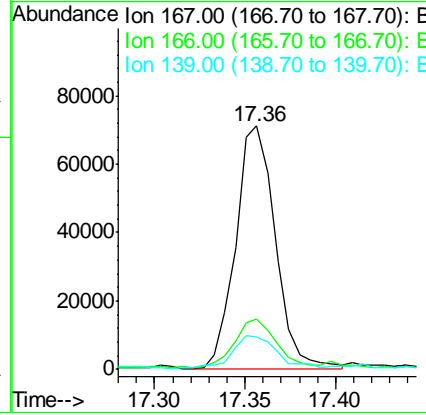
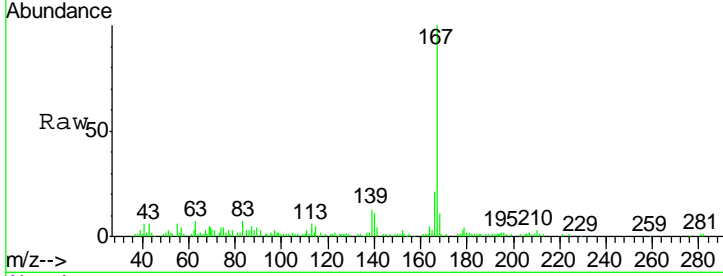
#72  
 Carbazole  
 Concen: 4.527 ng/ul  
 RT: 17.36 min Scan# 2443  
 Delta R.T. -0.00 min  
 Lab File: BM014379.D  
 Acq: 27 Feb 2018 13:00

Instrument :  
 BNA\_M  
 ClientSampled :  
 BE5Y6

Tgt Ion	Resp	Lower	Upper
167	108938		
166	20.8	17.1	25.7
139	13.5	10.0	15.0

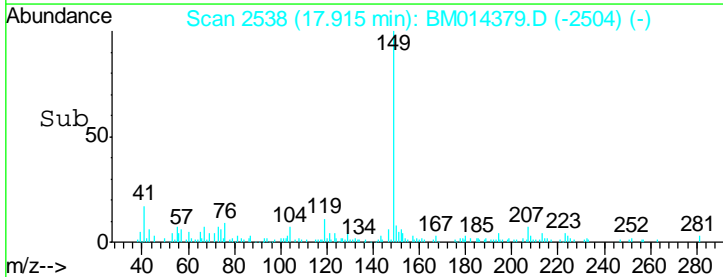
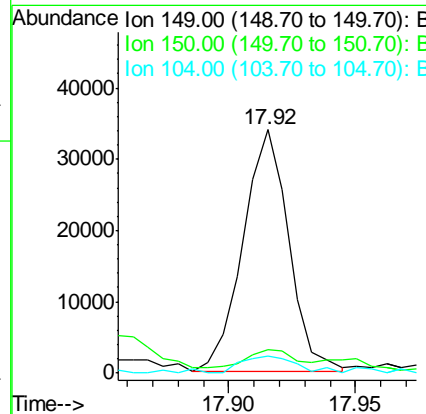
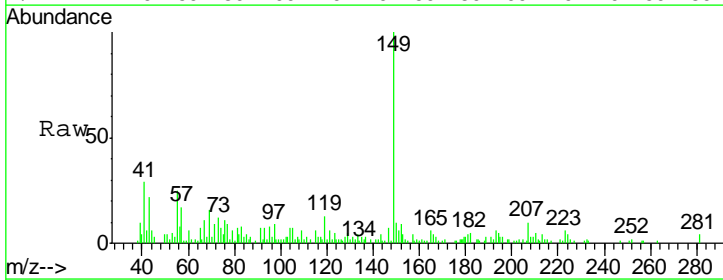
Manual Integrations  
 APPROVED

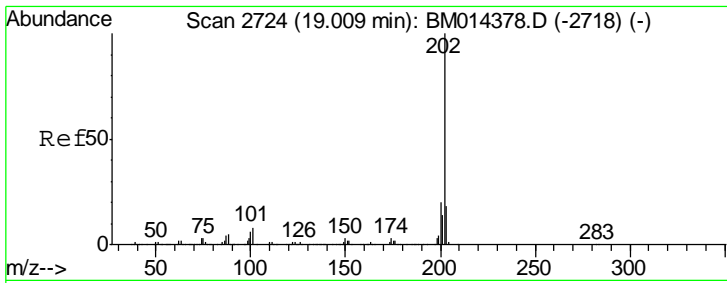
Sohil  
 2/28/2018 1:59:00 PM



#73  
 Di-n-butylphthalate  
 Concen: 1.370 ng/ul  
 RT: 17.92 min Scan# 2538  
 Delta R.T. -0.00 min  
 Lab File: BM014379.D  
 Acq: 27 Feb 2018 13:00

Tgt Ion	Resp	Lower	Upper
149	42535		
150	9.7	7.1	10.7
104	7.0	5.6	8.4





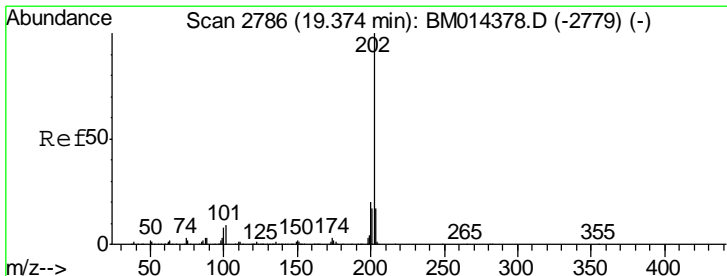
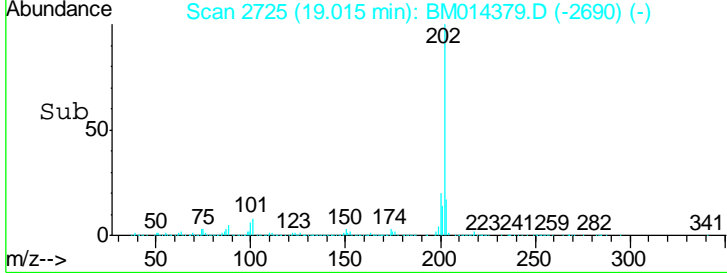
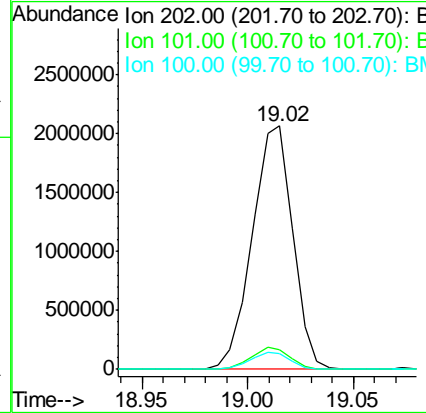
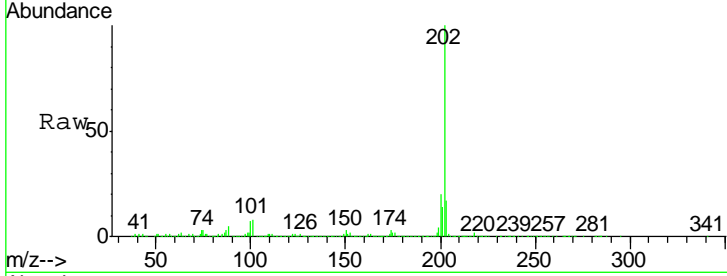
#74  
 Fluoranthene  
 Concen: 80.910 ng/ul  
 RT: 19.02 min Scan# 2725  
 Delta R.T. 0.01 min  
 Lab File: BM014379.D  
 Acq: 27 Feb 2018 13:00

Instrument :  
 BNA\_M  
 ClientSampled :  
 BE5Y6

Tgt Ion	Ratio	Lower	Upper
202	100		
101	8.1	4.6	7.0#
100	6.5	3.4	5.2#

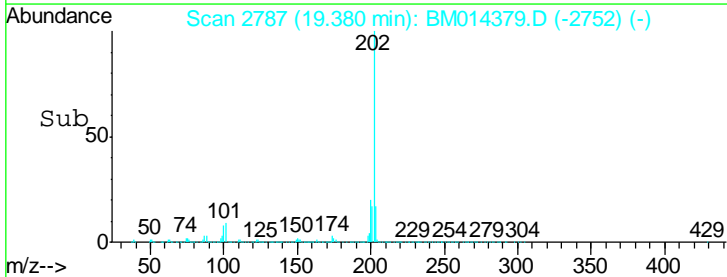
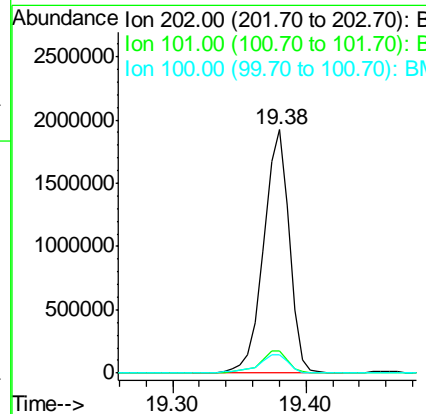
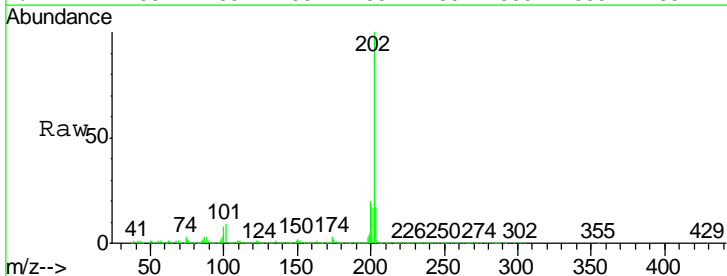
Manual Integrations  
 APPROVED

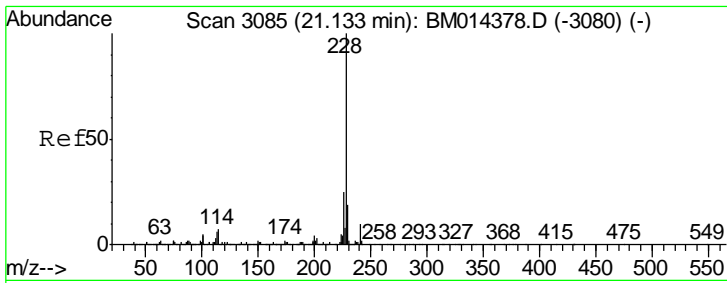
Sohil  
 2/28/2018 1:59:00 PM



#77  
 Pyrene  
 Concen: 78.704 ng/ul  
 RT: 19.38 min Scan# 2787  
 Delta R.T. 0.01 min  
 Lab File: BM014379.D  
 Acq: 27 Feb 2018 13:00

Tgt Ion	Ratio	Lower	Upper
202	100		
101	9.1	5.1	7.7#
100	7.7	4.9	7.3#





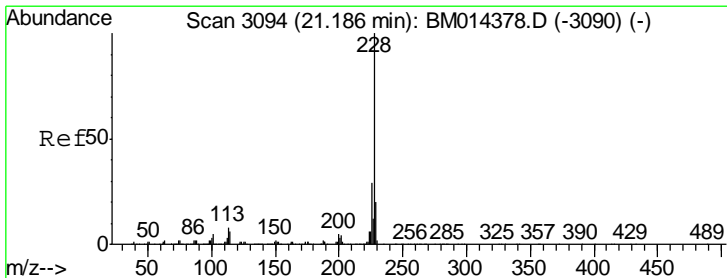
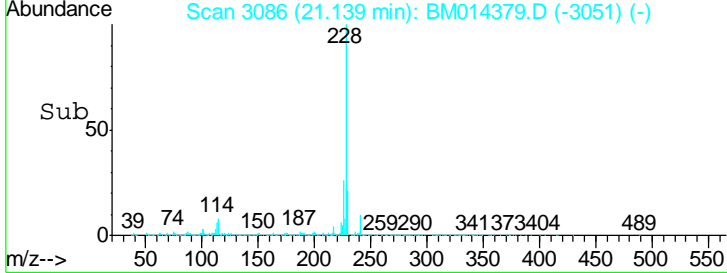
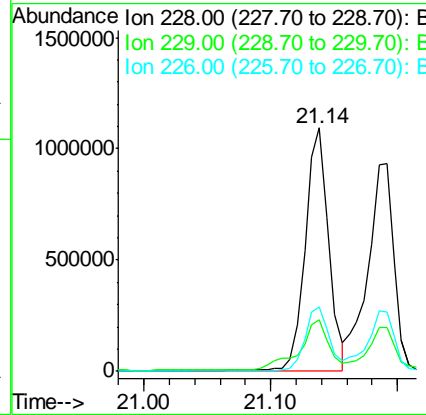
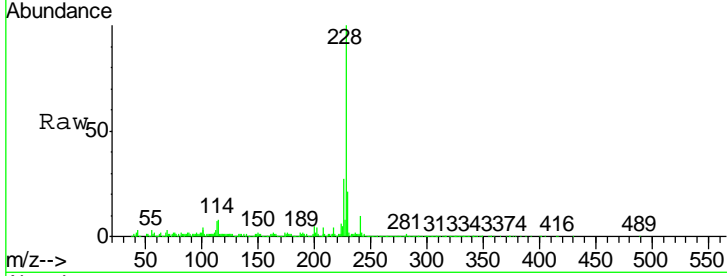
#80  
 Benzo(a)anthracene  
 Concen: 46.487 ng/ul  
 RT: 21.14 min Scan# 3086  
 Delta R.T. 0.01 min  
 Lab File: BM014379.D  
 Acq: 27 Feb 2018 13:00

Instrument :  
 BNA\_M  
 Client Sampled :  
 BE5Y6

Tgt Ion	Resp	Lower	Upper
228	1406750		
229	21.1	15.4	23.0
226	26.6	21.4	32.0

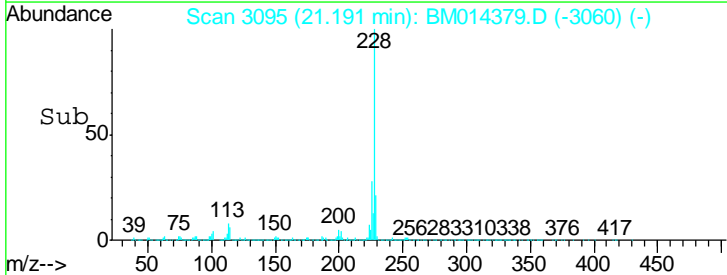
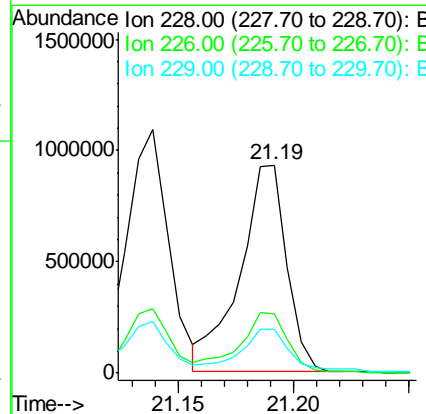
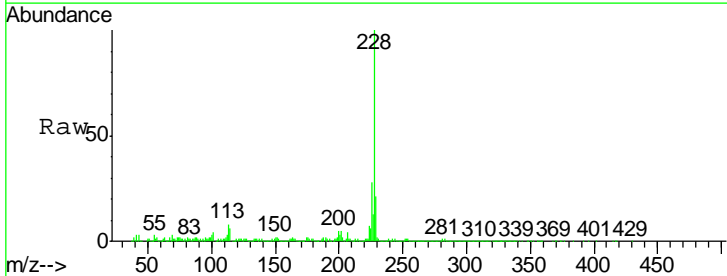
Manual Integrations  
 APPROVED

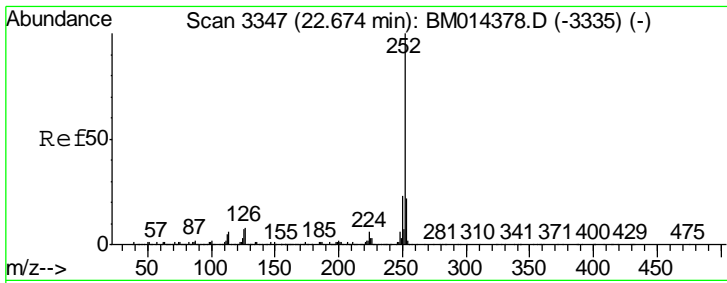
Sohil  
 2/28/2018 1:59:00 PM



#82  
 Chrysene  
 Concen: 46.404 ng/ul  
 RT: 21.19 min Scan# 3095  
 Delta R.T. 0.01 min  
 Lab File: BM014379.D  
 Acq: 27 Feb 2018 13:00

Tgt Ion	Resp	Lower	Upper
228	1309972		
226	28.5	23.4	35.2
229	21.4	15.5	23.3





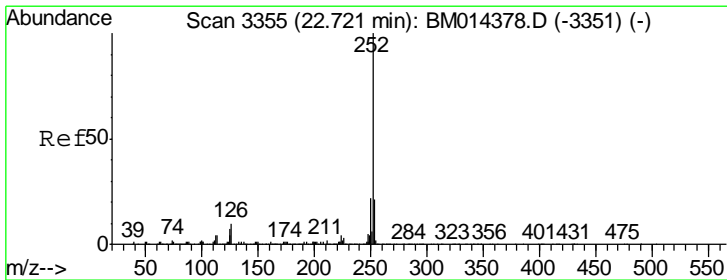
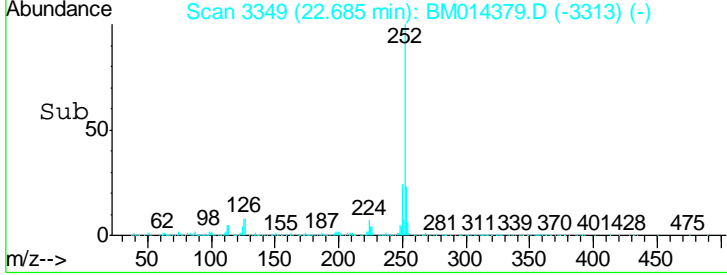
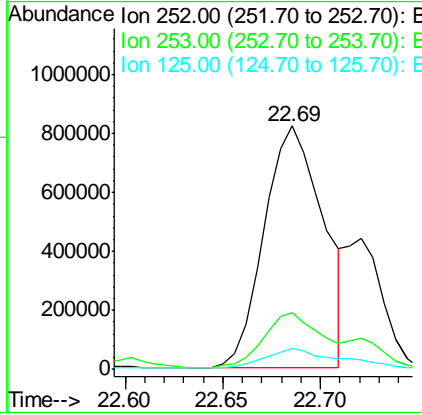
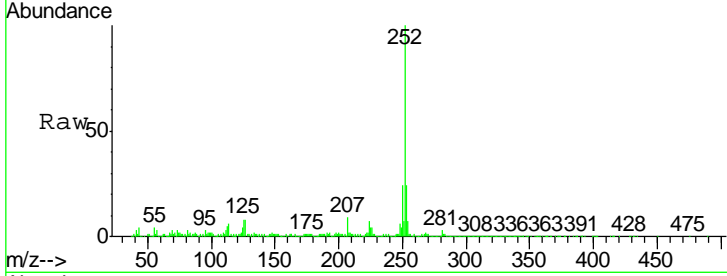
#85  
 Benzo(b)fluoranthene  
 Concen: 56.452 ng/ul  
 RT: 22.69 min Scan# 3349  
 Delta R.T. 0.01 min  
 Lab File: BM014379.D  
 Acq: 27 Feb 2018 13:00

Instrument :  
 BNA\_M  
 ClientSampled :  
 BE5Y6

Tgt Ion	Ratio	Lower	Upper
252	100		
253	23.5	17.9	26.9
125	8.5	3.6	5.4#

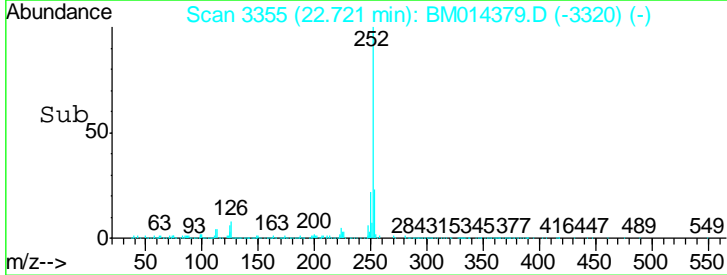
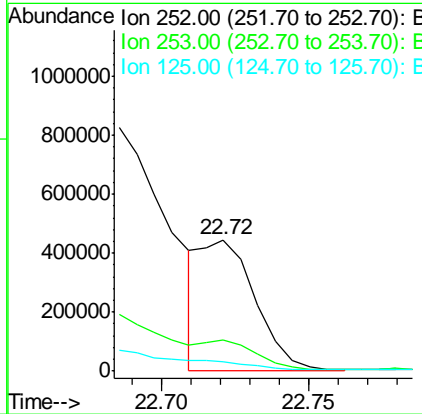
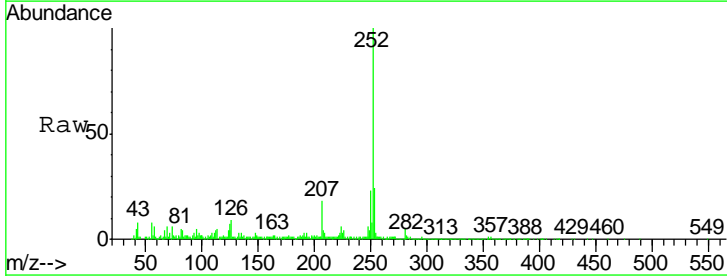
Manual Integrations  
 APPROVED

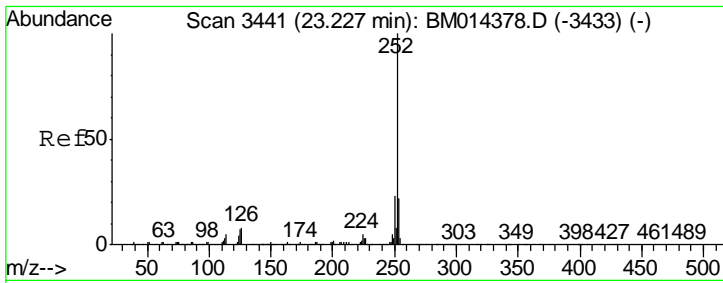
Sohil  
 2/28/2018 1:59:00 PM



#86  
 Benzo(k)fluoranthene  
 Concen: 19.736 ng/ul m  
 RT: 22.72 min Scan# 3355  
 Delta R.T. 0.01 min  
 Lab File: BM014379.D  
 Acq: 27 Feb 2018 13:00

Tgt Ion	Ratio	Lower	Upper
252	100		
253	23.9	17.1	25.7
125	7.2	3.4	5.2#





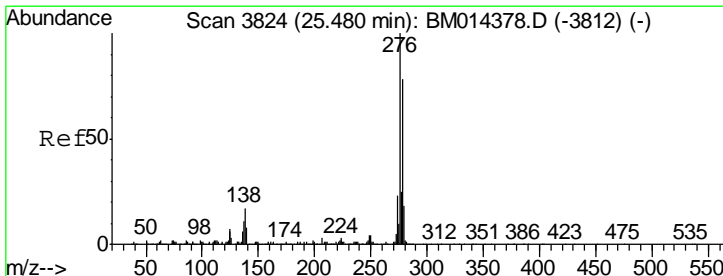
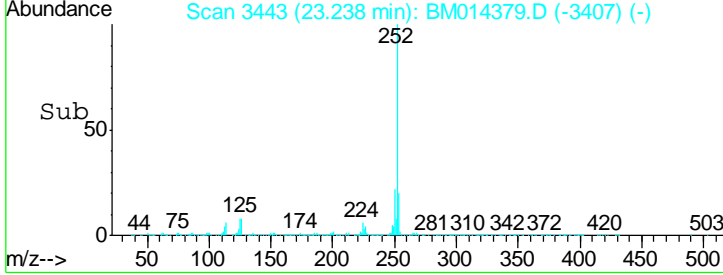
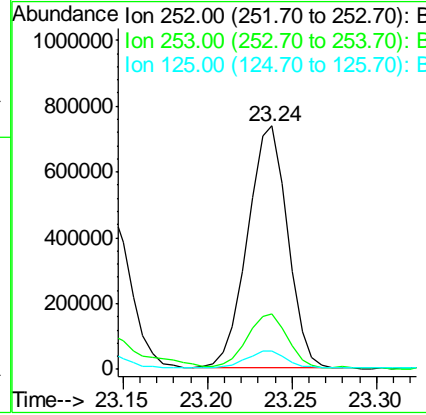
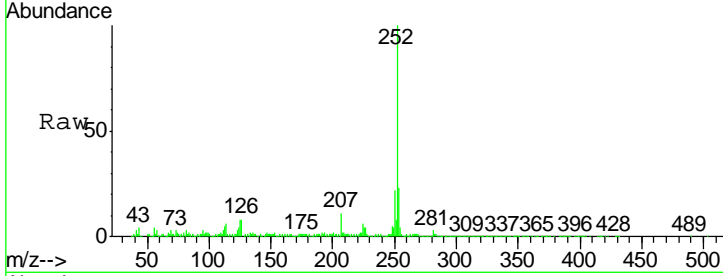
#88  
 Benzo(a)pyrene  
 Concen: 44.511 ng/ul  
 RT: 23.24 min Scan# 3443  
 Delta R.T. 0.01 min  
 Lab File: BM014379.D  
 Acq: 27 Feb 2018 13:00

Instrument :  
 BNA\_M  
 ClientSampled :  
 BE5Y6

Tgt Ion	Ratio	Lower	Upper
252	100		
253	22.6	18.2	27.2
125	7.7	4.0	6.0

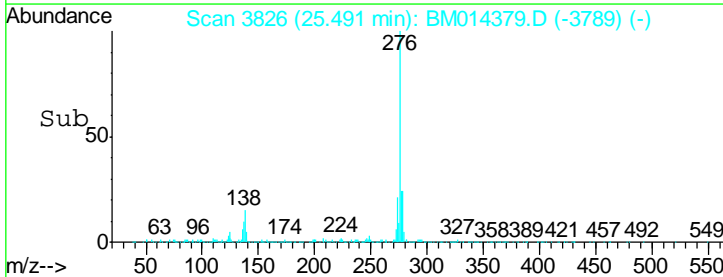
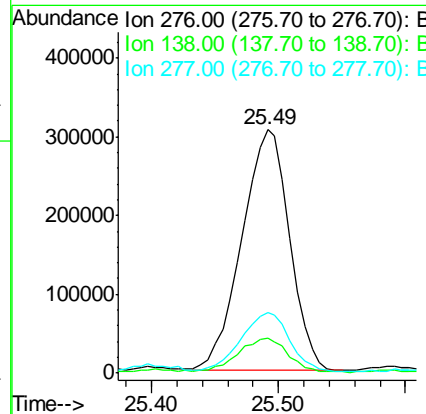
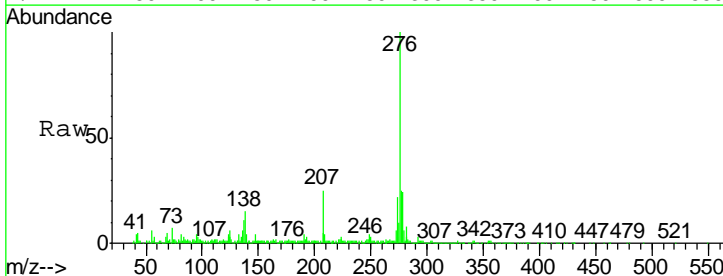
Manual Integrations  
 APPROVED

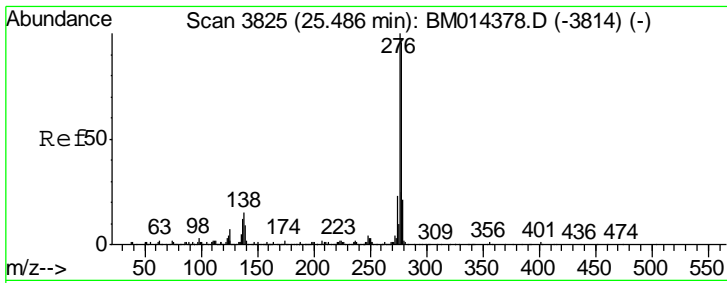
Sohil  
 2/28/2018 1:59:00 PM



#89  
 Indeno(1,2,3-cd)pyrene  
 Concen: 30.048 ng/ul  
 RT: 25.49 min Scan# 3826  
 Delta R.T. 0.02 min  
 Lab File: BM014379.D  
 Acq: 27 Feb 2018 13:00

Tgt Ion	Ratio	Lower	Upper
276	100		
138	14.6	9.3	13.9
277	24.9	19.9	29.9





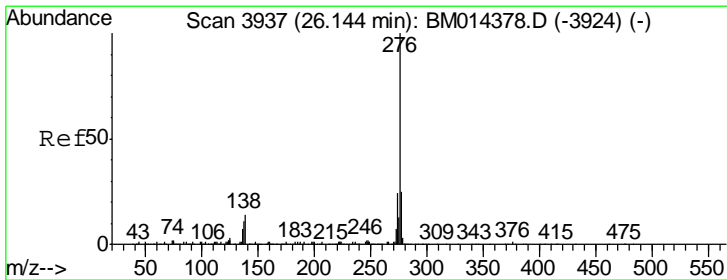
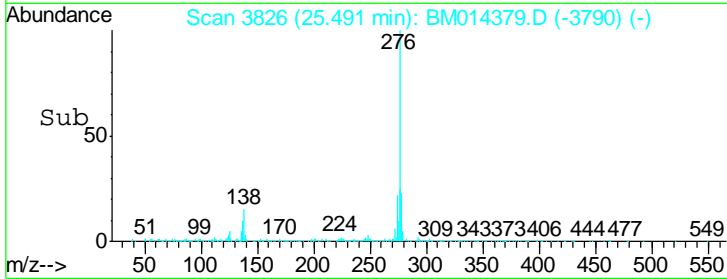
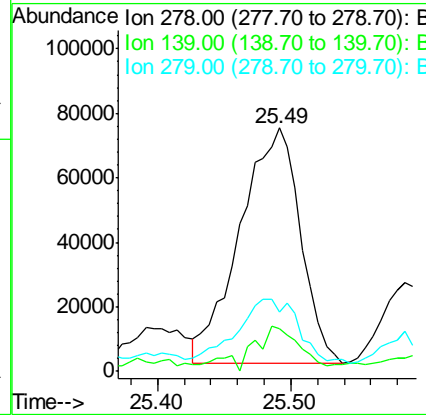
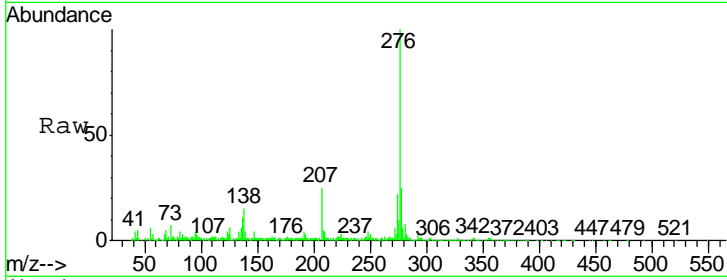
#90  
 Dibenzo(a,h)anthracene  
 Concen: 10.310 ng/ul  
 RT: 25.49 min Scan# 3826  
 Delta R.T. 0.01 min  
 Lab File: BM014379.D  
 Acq: 27 Feb 2018 13:00

Instrument :  
 BNA\_M  
 ClientSampled :  
 BE5Y6

Tgt Ion	Ratio	Lower	Upper
278	100		
139	17.4	5.8	8.8#
279	24.3	18.6	27.8

Manual Integrations  
 APPROVED

Sohil  
 2/28/2018 1:59:00 PM



#91  
 Benzo(g,h,i)perylene  
 Concen: 27.644 ng/ul  
 RT: 26.16 min Scan# 3939  
 Delta R.T. 0.03 min  
 Lab File: BM014379.D  
 Acq: 27 Feb 2018 13:00

Tgt Ion	Ratio	Lower	Upper
276	100		
138	13.3	8.5	12.7#
277	24.0	18.6	28.0

