

Data Path : Z:\HPCHEM1\BNA M\DATA\BM022718\  
 Data File : BM014387.D  
 Acq On : 27 Feb 2018 17:49  
 Operator : SJ/JU  
 Sample : J1631-09  
 Misc :  
 ALS Vial : 11 Sample Multiplier: 1

Instrument :  
 BNA\_M  
 ClientSampled :  
 BE5Z0

Manual Integrations  
 APPROVED

Sohil  
 2/28/2018 1:59:16 PM

Quant Time: Feb 28 01:21:01 2018  
 Quant Method : Z:\HPCHEM1\BNA M\METHODS\SOM-EPA-BM021418.M  
 Quant Title : SVOA CALIBRATION  
 QLast Update : Wed Feb 28 00:45:45 2018  
 Response via : Initial Calibration

Internal Standards	R.T.	QIon	Response	Conc	Units	Dev(Min)
1) 1,4-Dichlorobenzene-d4	7.52	152	110991	20.00	ng/ul	0.00
18) Naphthalene-d8	10.29	136	465608	20.00	ng/ul	0.00
35) Acenaphthene-d10	14.18	164	259367	20.00	ng/ul	0.00
61) Phenanthrene-d10	16.94	188	533208	20.00	ng/ul	0.00
75) Chrysene-d12	21.16	240	524211	20.00	ng/ul	0.00
83) Perylene-d12	23.34	264	513872	20.00	ng/ul	0.02

## System Monitoring Compounds

3) 1,4-Dioxane-d8	3.10	96	15043	5.80	ng/uL	0.00
5) Phenol-d5	6.73	99	256475	27.34	ng/ul	0.00
7) Bis-(2-Chloroethyl)ether-d	6.87	67	163818	28.85	ng/ul	0.00
9) 2-Chlorophenol-d4	7.06	132	221577	30.80	ng/ul	0.00
13) 4-Methylphenol-d8	8.25	113	184740	22.51	ng/ul	0.01
19) Nitrobenzene-d5	8.68	128	112061	32.57	ng/ul	0.00
22) 2-Nitrophenol-d4	9.39	143	124153	34.86	ng/ul	0.00
26) 2,4-Dichlorophenol-d3	9.94	165	215456	29.21	ng/ul	0.01
29) 4-Chloroaniline-d4	10.46	131	167495	23.05	ng/ul	0.00
43) Dimethylphthalate-d6	13.60	166	699392	32.65	ng/ul	0.00
46) Acenaphthylene-d8	13.87	160	885897	33.54	ng/ul	0.00
51) 4-Nitrophenol-d4	14.46	143	69462m	23.49	ng/ul	0.02
57) Fluorene-d10	15.19	176	596259	31.07	ng/ul	0.00
62) 4,6-Dinitro-2-methylphenol	15.35	200	19605	6.13	ng/ul	0.01
70) Anthracene-d10	17.04	188	873701	33.96	ng/ul	0.00
76) Pyrene-d10	19.35	212	874262	32.34	ng/ul	0.00
87) Benzo(a)pyrene-d12	23.21	264	808644	32.33	ng/ul	0.02

## Target Compounds

Target Compounds	R.T.	QIon	Response	Conc	Units	Ovalue
6) Phenol	6.75	94	33554	3.409	ng/ul	95
14) Acetophenone	8.35	105	24459	1.727	ng/ul	85
28) Naphthalene	10.34	128	93688	3.918	ng/ul	98
34) 2-Methylnaphthalene	11.97	142	28530	1.567	ng/ul	96
44) Dimethylphthalate	13.65	163	323203	15.302	ng/ul	97
47) Acenaphthylene	13.90	152	126768	5.078	ng/ul	99
49) Acenaphthene	14.24	153	50388	2.866	ng/ul	93
53) Dibenzofuran	14.59	168	51834	1.967	ng/ul#	84
58) Fluorene	15.24	166	64513	2.835	ng/ul#	94
69) Phenanthrene	16.99	178	1316848	42.864	ng/ul	100
71) Anthracene	17.07	178	368997	11.943	ng/ul	98
72) Carbazole	17.36	167	186788	7.190	ng/ul	97
74) Fluoranthene	19.02	202	2987952	81.407	ng/ul#	91
77) Pyrene	19.39	202	3426993	98.370	ng/ul#	92
80) Benzo(a)anthracene	21.14	228	1715757	52.444	ng/ul	96
82) Chrysene	21.20	228	1785394	58.499	ng/ul	97
85) Benzo(b)fluoranthene	22.70	252	3412642	99.182	ng/ul#	98
86) Benzo(k)fluoranthene	22.73	252	880231m	26.907	ng/ul	
88) Benzo(a)pyrene	23.26	252	2482549	80.741	ng/ul#	98
89) Indeno(1,2,3-cd)pyrene	25.53	276	1757618	58.909	ng/ul#	97
90) Dibenzo(a,h)anthracene	25.51	278	455711	18.382	ng/ul#	83
91) Benzo(a,h,i)perylene	26.19	276	1313542	54.346	ng/ul#	94

Data Path : Z:\HPCHEM1\BNA M\DATA\BM022718\  
Data File : BM014387.D  
Acq On : 27 Feb 2018 17:49  
Operator : SJ/JU  
Sample : J1631-09  
Misc :  
ALS Vial : 11 Sample Multiplier: 1

**Instrument :**  
BNA\_M  
**ClientSampled :**  
BE5Z0

**Manual Integrations**  
**APPROVED**  
Sohil  
2/28/2018 1:59:16 PM

Quant Time: Feb 28 01:21:01 2018  
Quant Method : Z:\HPCHEM1\BNA M\METHODS\SOM-EPA-BM021418.M  
Quant Title : SVOA CALIBRATION  
QLast Update : Wed Feb 28 00:45:45 2018  
Response via : Initial Calibration

Internal Standards R.T. QIon Response Conc Units Dev(Min)  
-----

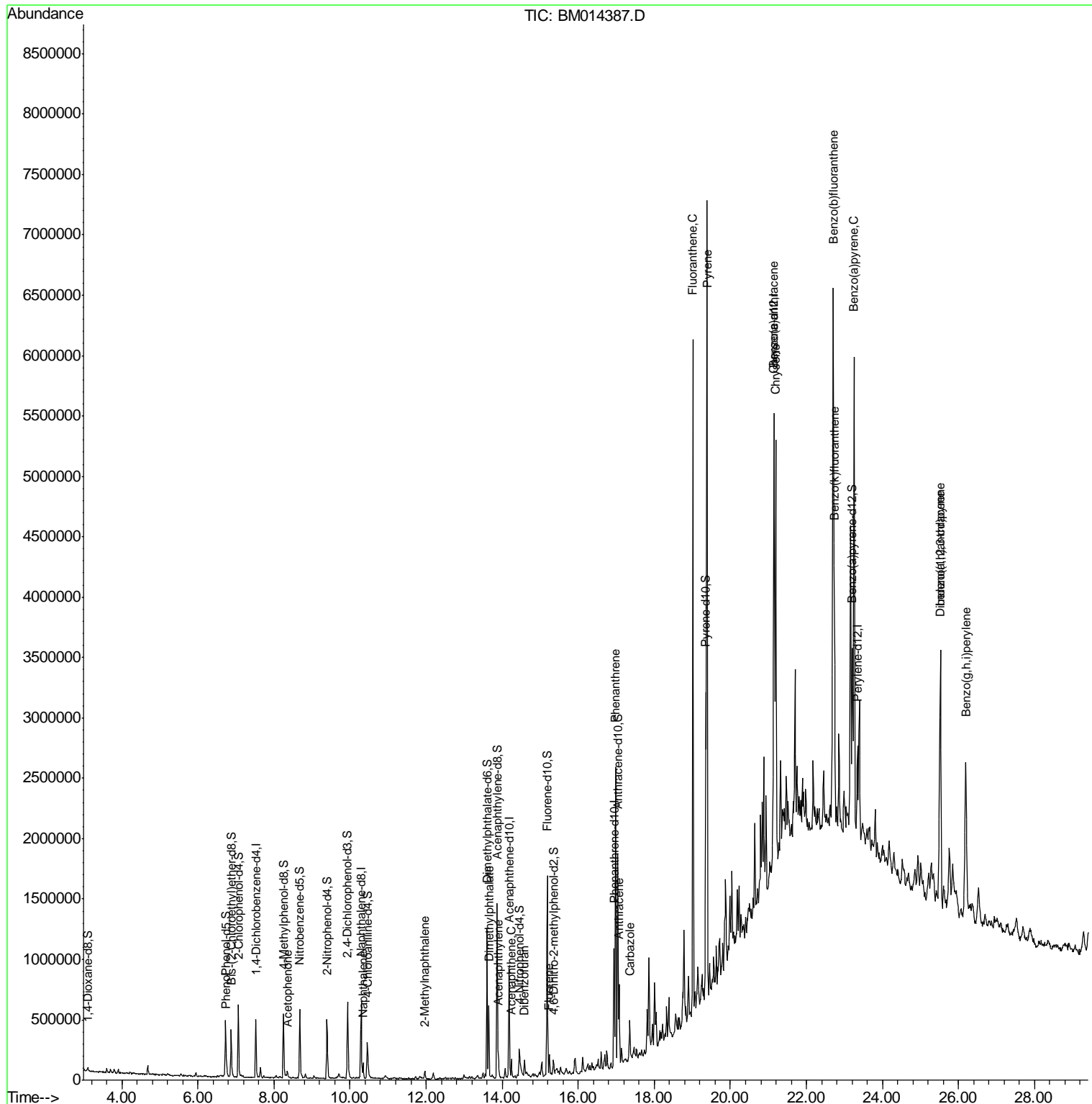
(#) = qualifier out of range (m) = manual integration (+) = signals summed

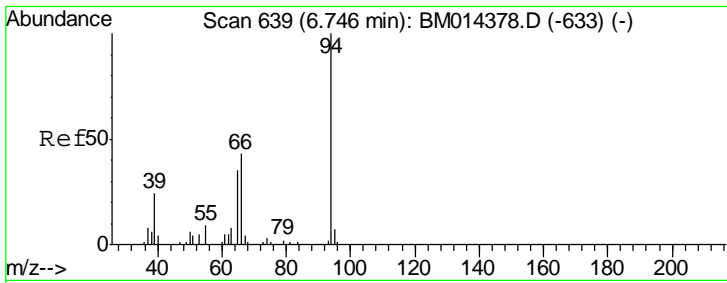
Data Path : Z:\HPCHEM1\BNA M\DATA\BM022718\  
 Data File : BM014387.D  
 Acq On : 27 Feb 2018 17:49  
 Operator : SJ/JU  
 Sample : J1631-09  
 Misc :  
 ALS Vial : 11 Sample Multiplier: 1

Instrument :  
 BNA\_M  
 Client Sampled :  
 BE5Z0

Manual Integrations  
**APPROVED**  
 Sohil  
 2/28/2018 1:59:16 PM

Quant Time: Feb 28 01:21:01 2018  
 Quant Method : Z:\HPCHEM1\BNA M\METHODS\SOM-EPA-BM021418.M  
 Quant Title : SVOA CALIBRATION  
 QLast Update : Wed Feb 28 00:45:45 2018  
 Response via : Initial Calibration



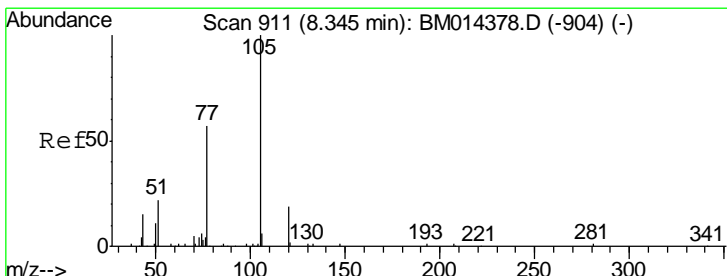
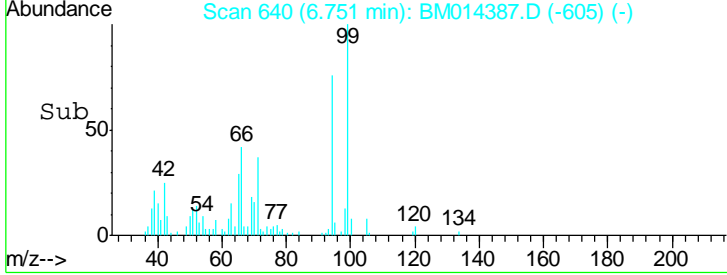
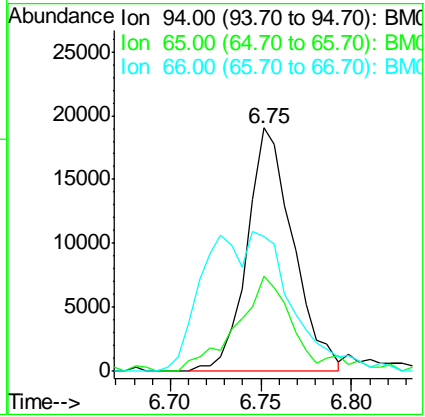
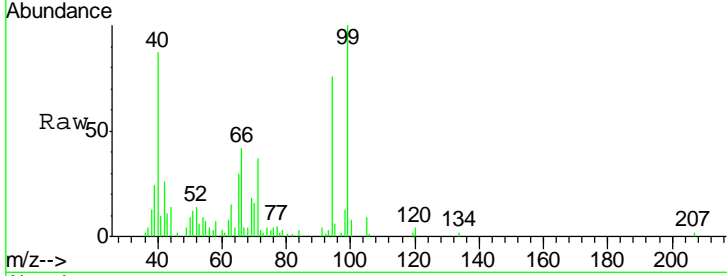


#6  
 Phenol  
 Concen: 3.409 ng/ul  
 RT: 6.75 min Scan# 640  
 Delta R.T. 0.01 min  
 Lab File: BM014387.D  
 Acq: 27 Feb 2018 17:49

**Instrument :**  
 BNA\_M  
**ClientSampled :**  
 BE5Z0

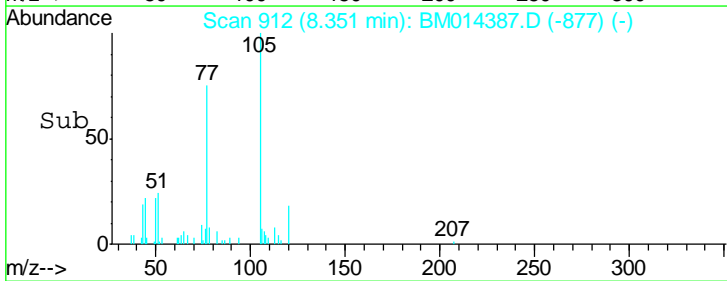
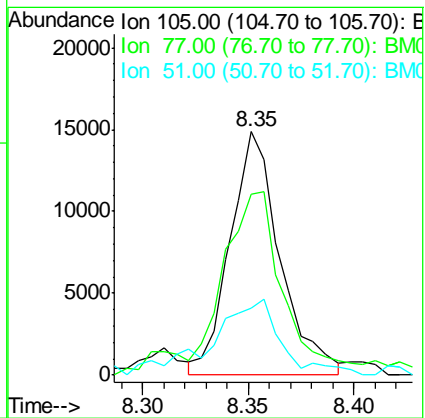
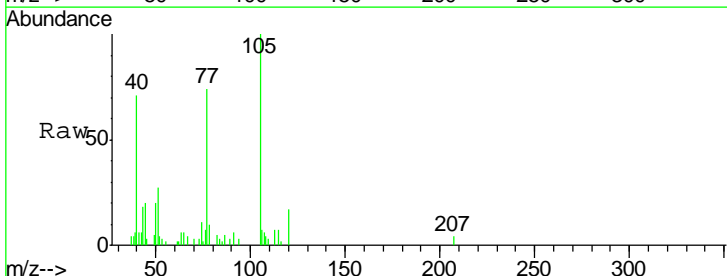
Tgt Ion	Resp	Lower	Upper
94	100		
65	39.2	28.2	42.4
66	55.6	47.2	70.8

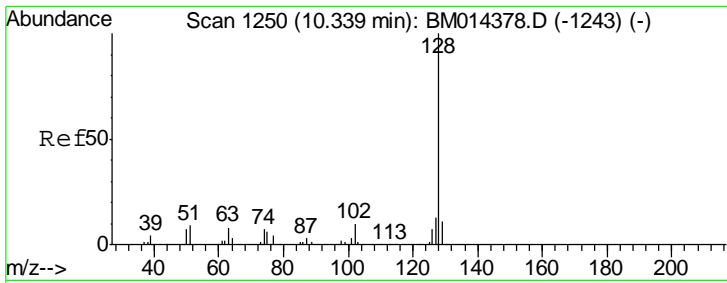
**Manual Integrations**  
**APPROVED**  
 Sohil  
 2/28/2018 1:59:16 PM



#14  
 Acetophenone  
 Concen: 1.727 ng/ul  
 RT: 8.35 min Scan# 912  
 Delta R.T. 0.01 min  
 Lab File: BM014387.D  
 Acq: 27 Feb 2018 17:49

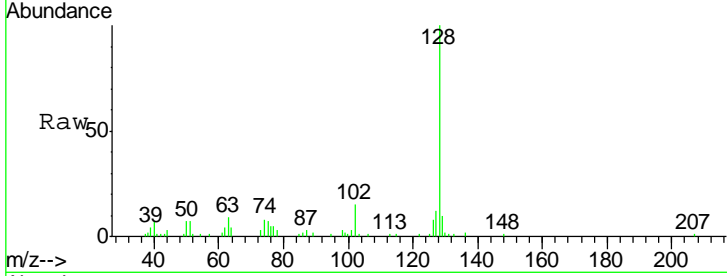
Tgt Ion	Resp	Lower	Upper
105	100		
77	74.4	74.2	111.4
51	27.4	23.4	35.2





#28  
 Naphthalene  
 Concen: 3.918 ng/ul  
 RT: 10.34 min Scan# 1250  
 Delta R.T. -0.00 min  
 Lab File: BM014387.D  
 Acq: 27 Feb 2018 17:49

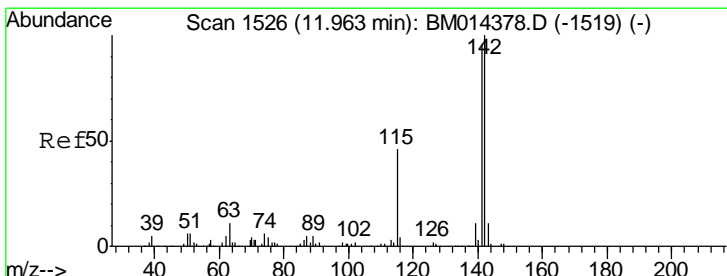
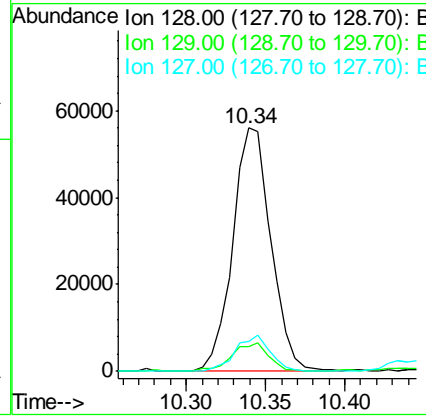
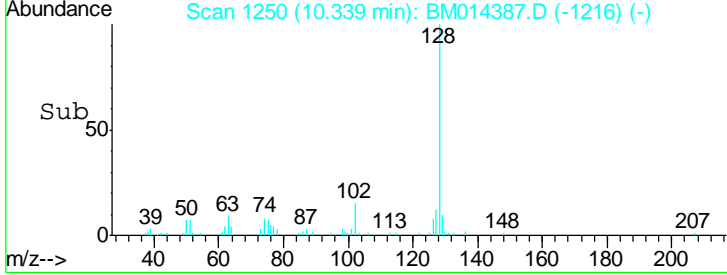
**Instrument :**  
 BNA\_M  
**ClientSampled :**  
 BE5Z0



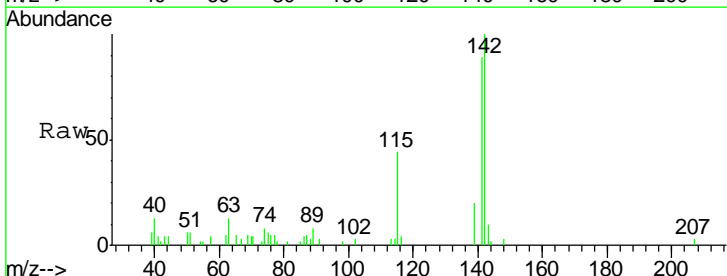
Tgt Ion: 128 Resp: 93688

Ion	Ratio	Lower	Upper
128	100		
129	10.4	8.8	13.2
127	12.2	10.6	16.0

**Manual Integrations**  
**APPROVED**  
 Sohil  
 2/28/2018 1:59:16 PM

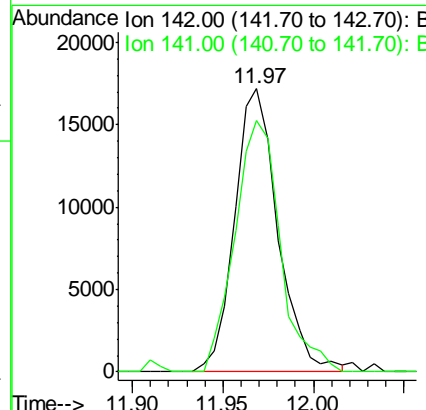
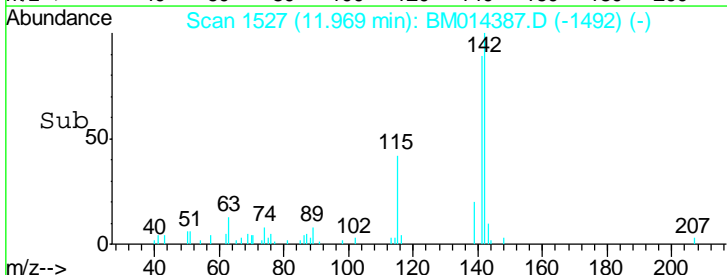


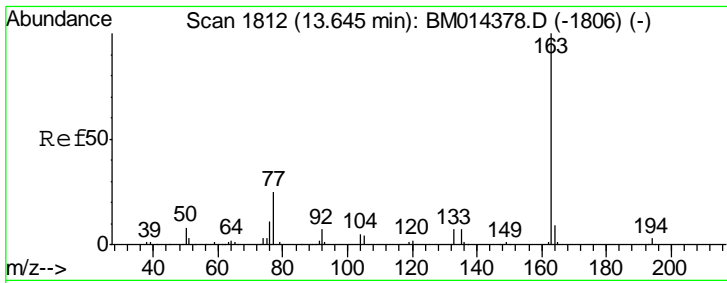
#34  
 2-Methylnaphthalene  
 Concen: 1.567 ng/ul  
 RT: 11.97 min Scan# 1527  
 Delta R.T. 0.01 min  
 Lab File: BM014387.D  
 Acq: 27 Feb 2018 17:49



Tgt Ion: 142 Resp: 28530

Ion	Ratio	Lower	Upper
142	100		
141	88.7	74.1	111.1





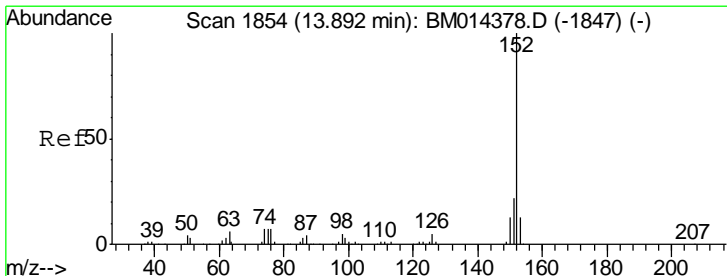
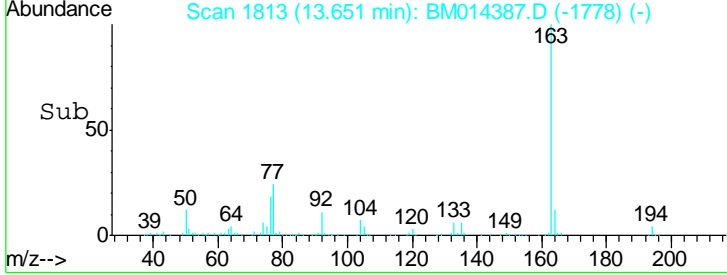
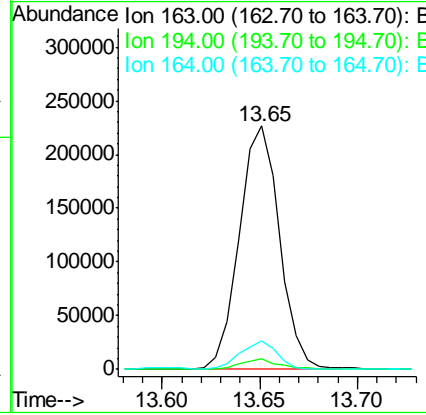
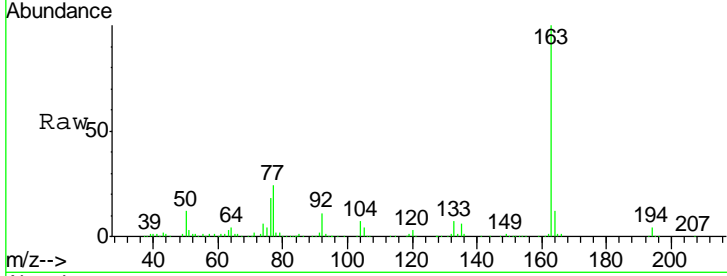
#44  
 Dimethylphthalate  
 Concen: 15.302 ng/ul  
 RT: 13.65 min Scan# 1813  
 Delta R.T. 0.01 min  
 Lab File: BM014387.D  
 Acq: 27 Feb 2018 17:49

**Instrument :**  
 BNA\_M  
**ClientSampled :**  
 BE5Z0

Tgt Ion	Resp	Lower	Upper
163	100		
194	4.4	3.5	5.3
164	11.9	8.2	12.4

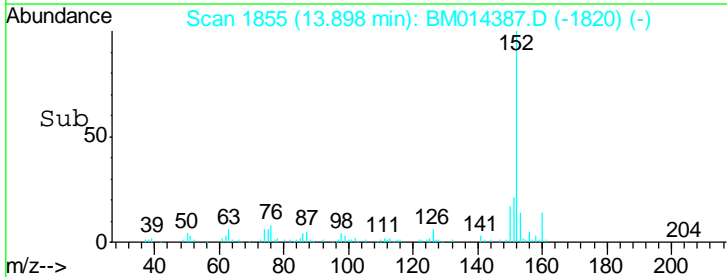
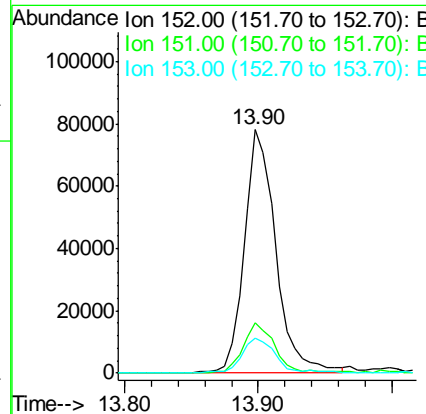
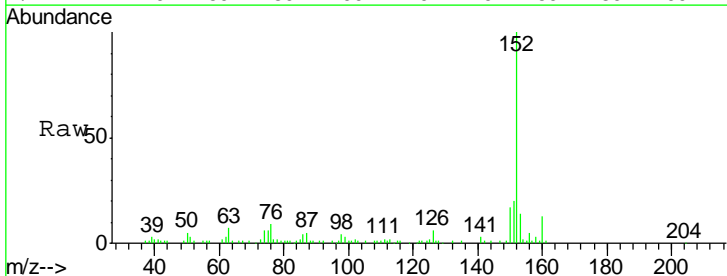
**Manual Integrations**  
**APPROVED**

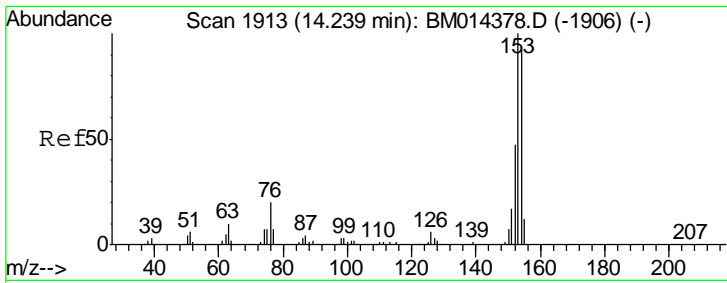
Sohil  
 2/28/2018 1:59:16 PM



#47  
 Acenaphthylene  
 Concen: 5.078 ng/ul  
 RT: 13.90 min Scan# 1855  
 Delta R.T. 0.01 min  
 Lab File: BM014387.D  
 Acq: 27 Feb 2018 17:49

Tgt Ion	Resp	Lower	Upper
152	100		
151	20.5	16.3	24.5
153	14.2	10.2	15.4





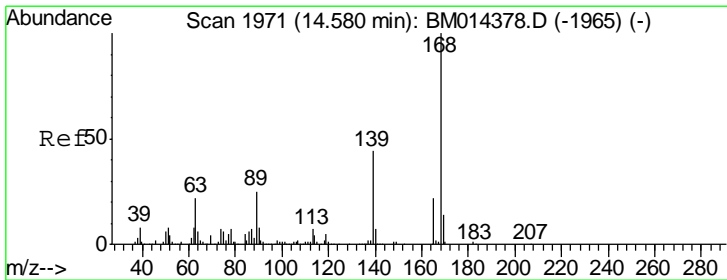
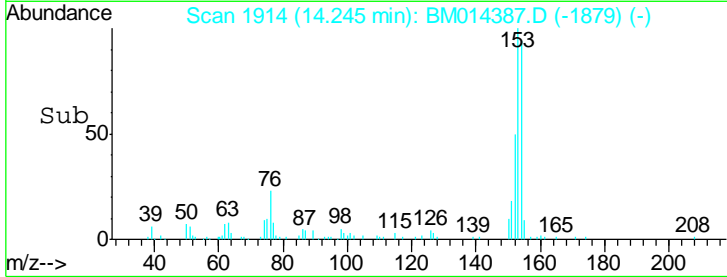
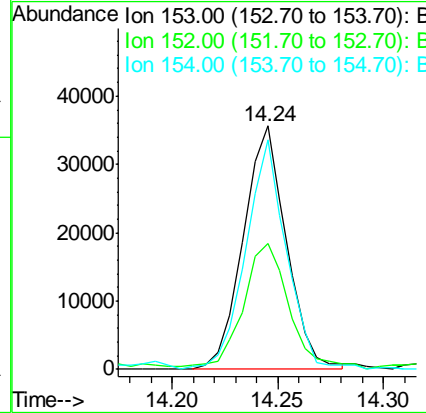
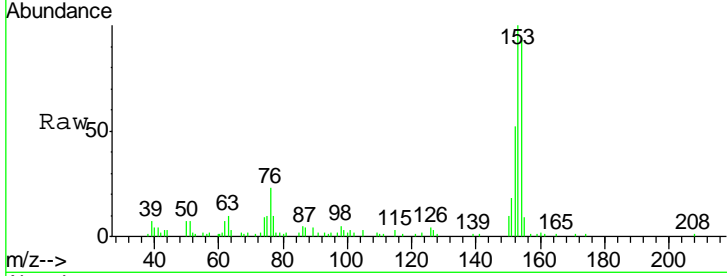
#49  
 Acenaphthene  
 Concen: 2.866 ng/ul  
 RT: 14.24 min Scan# 1914  
 Delta R.T. 0.01 min  
 Lab File: BM014387.D  
 Acq: 27 Feb 2018 17:49

Instrument :  
 BNA\_M  
 ClientSampled :  
 BE5Z0

Tgt Ion	Resp	Lower	Upper
153	100		
152	51.9	37.6	56.4
154	94.3	70.4	105.6

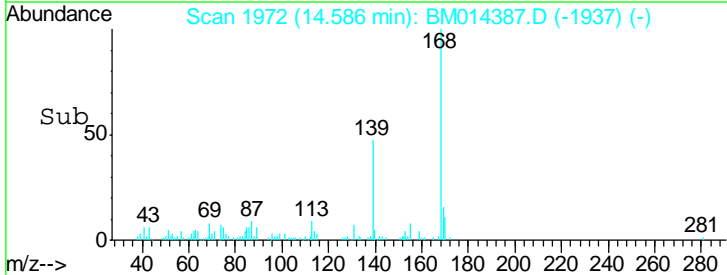
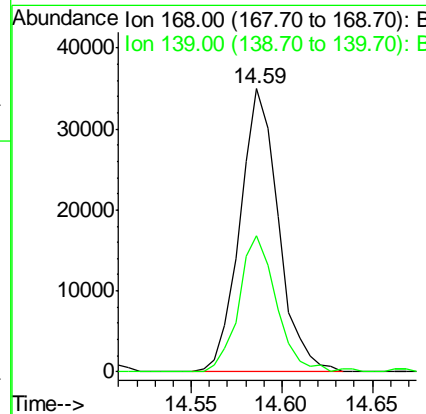
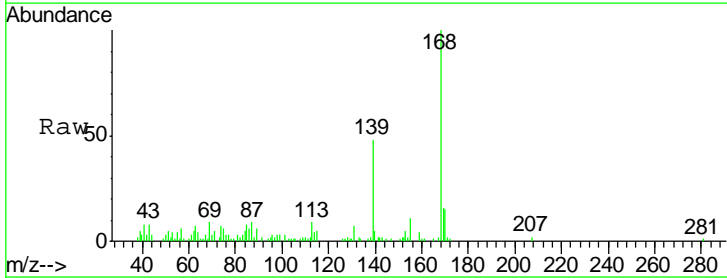
Manual Integrations  
 APPROVED

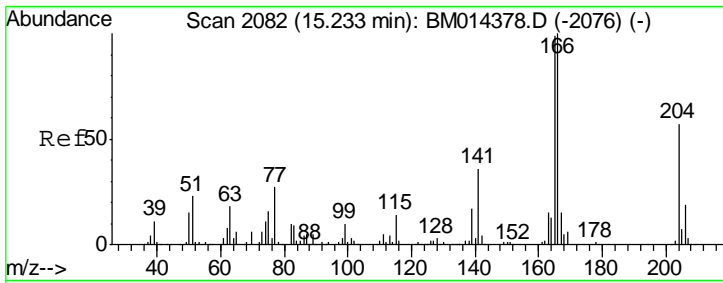
Sohil  
 2/28/2018 1:59:16 PM



#53  
 Dibenzofuran  
 Concen: 1.967 ng/ul  
 RT: 14.59 min Scan# 1972  
 Delta R.T. 0.01 min  
 Lab File: BM014387.D  
 Acq: 27 Feb 2018 17:49

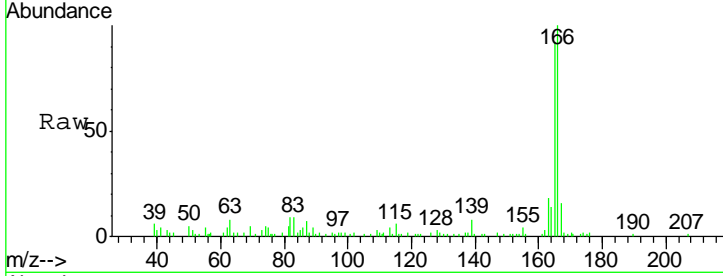
Tgt Ion	Resp	Lower	Upper
168	100		
139	48.1	30.8	46.2#





#58  
 Fluorene  
 Concen: 2.835 ng/ul  
 RT: 15.24 min Scan# 2083  
 Delta R.T. 0.01 min  
 Lab File: BM014387.D  
 Acq: 27 Feb 2018 17:49

**Instrument :**  
 BNA\_M  
**ClientSampled :**  
 BE5Z0

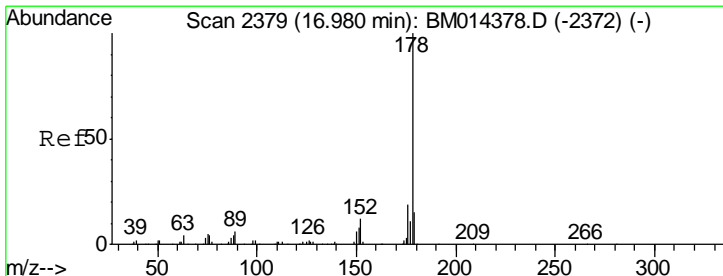
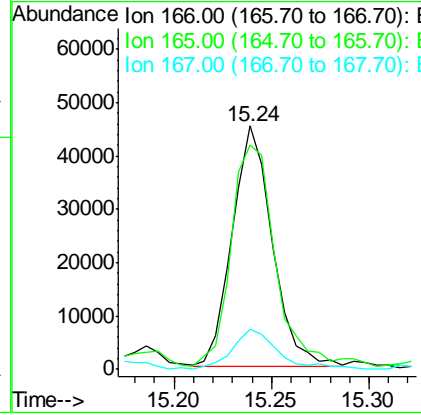
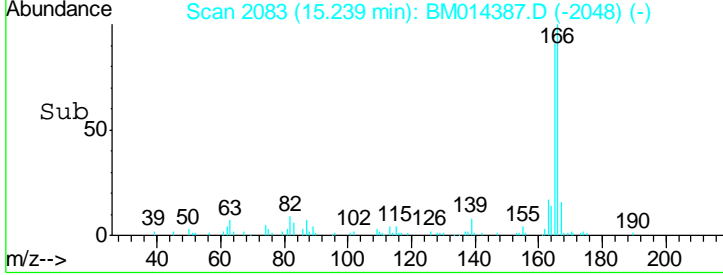


Tgt Ion: 166 Resp: 64513

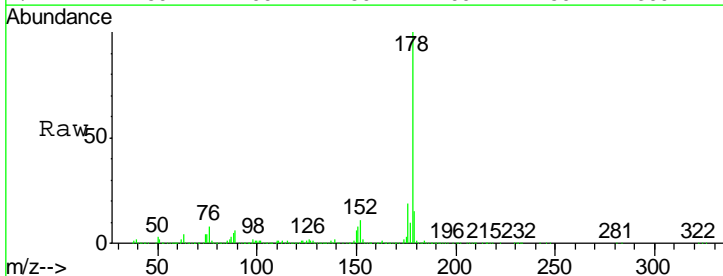
Ion	Ratio	Lower	Upper
166	100		
165	92.1	77.9	116.9
167	16.3	10.6	16.0#

**Manual Integrations**  
**APPROVED**

Sohil  
 2/28/2018 1:59:16 PM

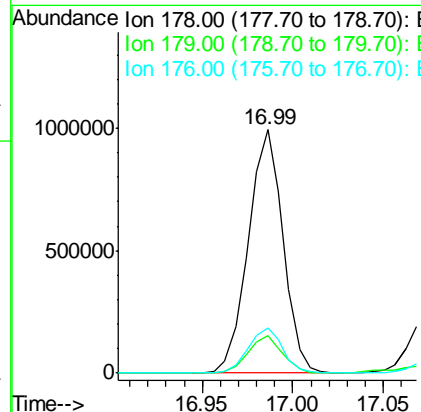
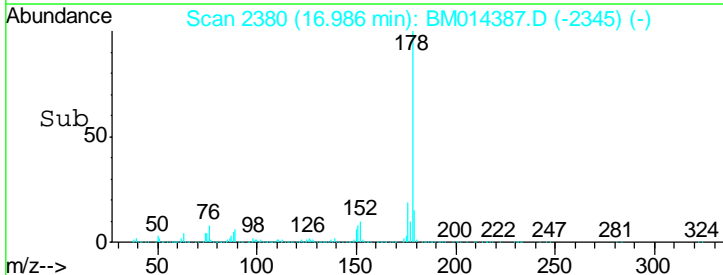


#69  
 Phenanthrene  
 Concen: 42.864 ng/ul  
 RT: 16.99 min Scan# 2380  
 Delta R.T. 0.01 min  
 Lab File: BM014387.D  
 Acq: 27 Feb 2018 17:49

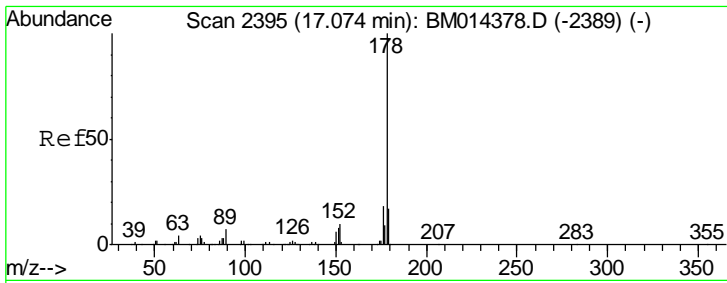


Tgt Ion: 178 Resp: 1316848

Ion	Ratio	Lower	Upper
178	100		
179	15.5	12.6	19.0
176	18.6	14.9	22.3







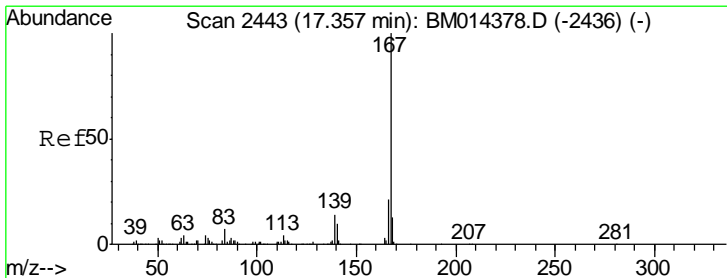
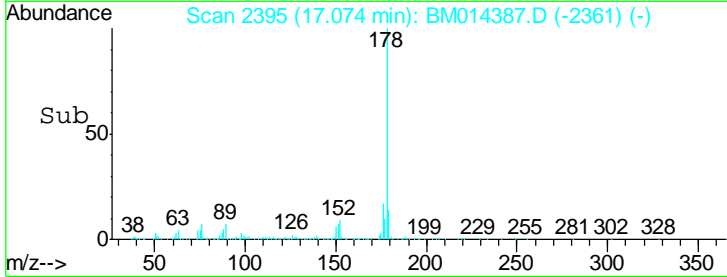
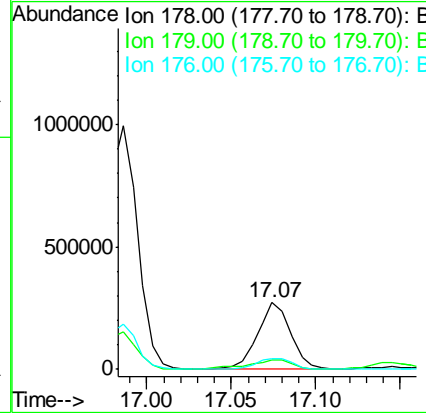
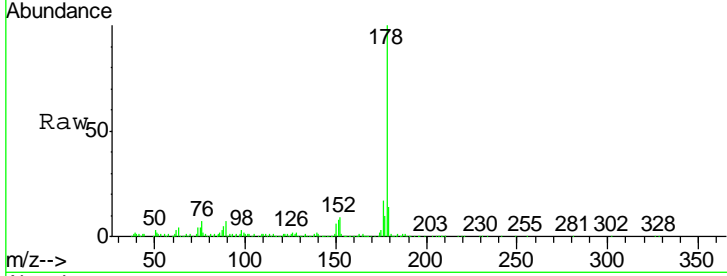
#71  
 Anthracene  
 Concen: 11.943 ng/ul  
 RT: 17.07 min Scan# 2395  
 Delta R.T. -0.00 min  
 Lab File: BM014387.D  
 Acq: 27 Feb 2018 17:49

Instrument :  
 BNA\_M  
 ClientSampled :  
 BE5Z0

Tgt Ion	Resp	Lower	Upper
178	100		
179	14.3	11.7	17.5
176	16.8	14.6	21.8

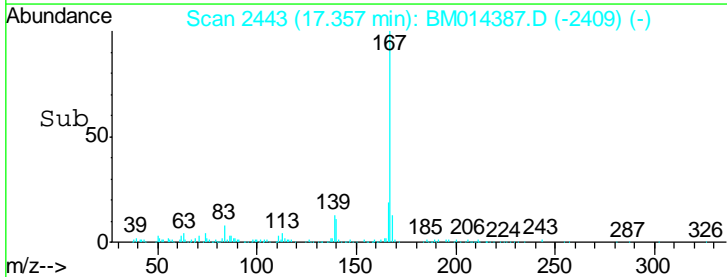
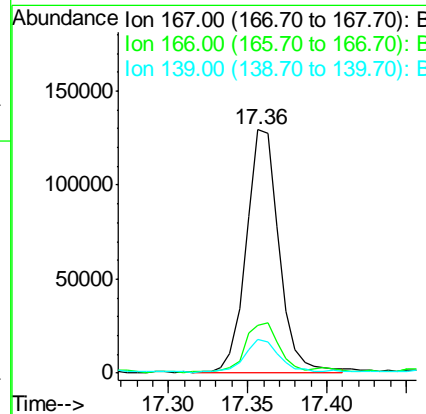
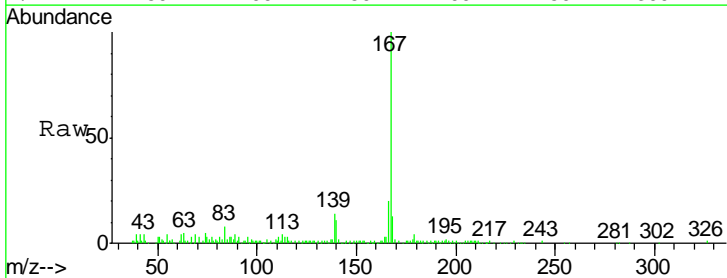
Manual Integrations  
 APPROVED

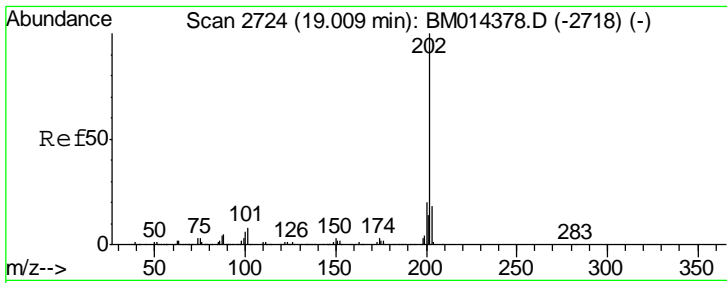
Sohil  
 2/28/2018 1:59:16 PM



#72  
 Carbazole  
 Concen: 7.190 ng/ul  
 RT: 17.36 min Scan# 2443  
 Delta R.T. -0.00 min  
 Lab File: BM014387.D  
 Acq: 27 Feb 2018 17:49

Tgt Ion	Resp	Lower	Upper
167	100		
166	19.6	17.1	25.7
139	13.7	10.0	15.0





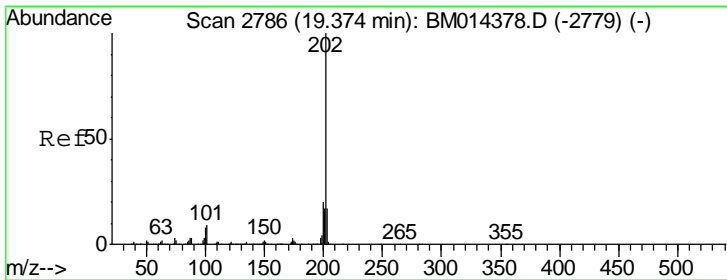
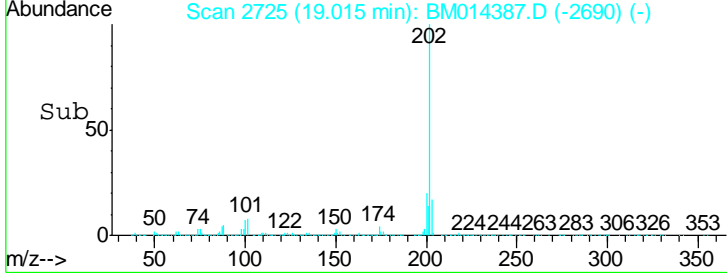
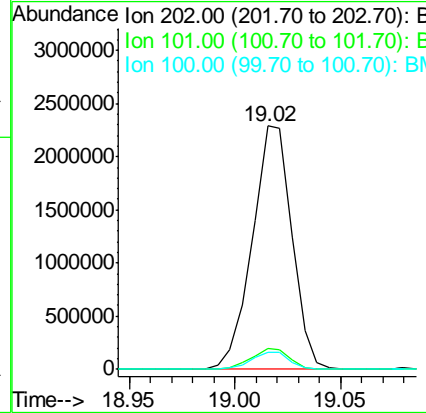
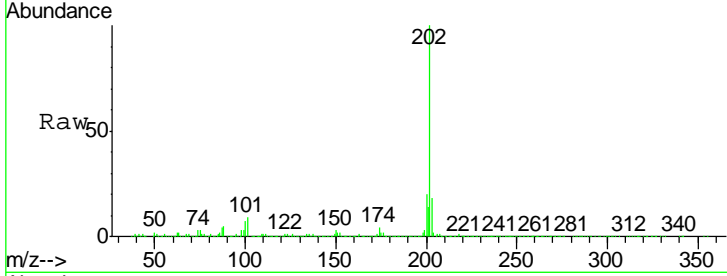
#74  
 Fluoranthene  
 Concen: 81.407 ng/ul  
 RT: 19.02 min Scan# 2725  
 Delta R.T. 0.01 min  
 Lab File: BM014387.D  
 Acq: 27 Feb 2018 17:49

Instrument :  
 BNA\_M  
 ClientSampled :  
 BE5Z0

Tgt Ion	Ratio	Lower	Upper
202	100		
101	8.6	4.6	7.0#
100	7.2	3.4	5.2#

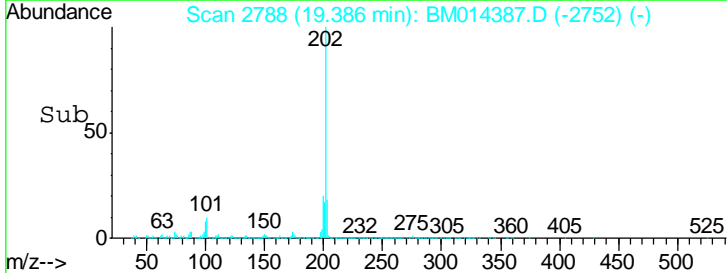
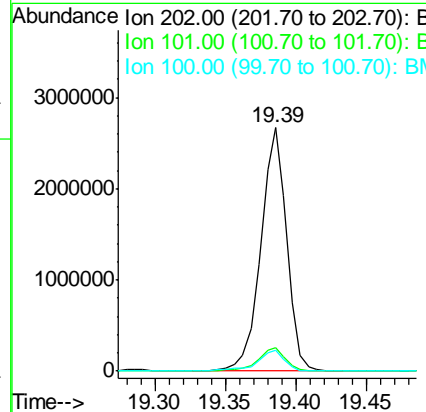
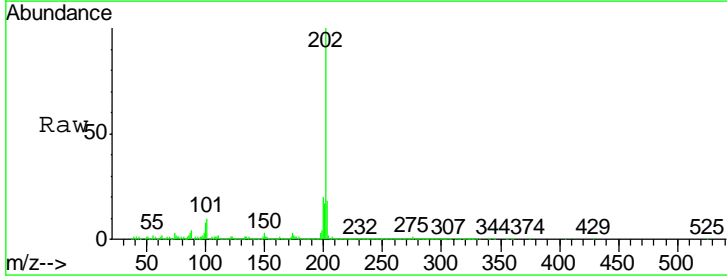
Manual Integrations  
 APPROVED

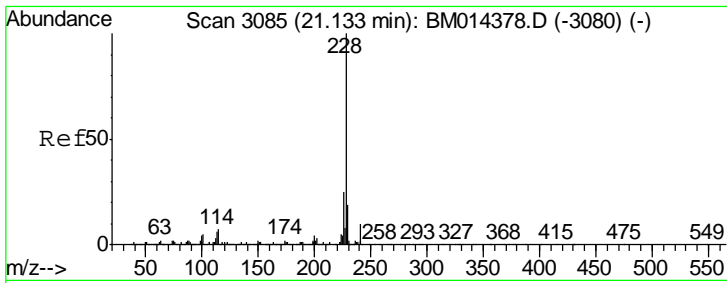
Sohil  
 2/28/2018 1:59:16 PM



#77  
 Pyrene  
 Concen: 98.370 ng/ul  
 RT: 19.39 min Scan# 2788  
 Delta R.T. 0.01 min  
 Lab File: BM014387.D  
 Acq: 27 Feb 2018 17:49

Tgt Ion	Ratio	Lower	Upper
202	100		
101	9.5	5.1	7.7#
100	8.4	4.9	7.3#





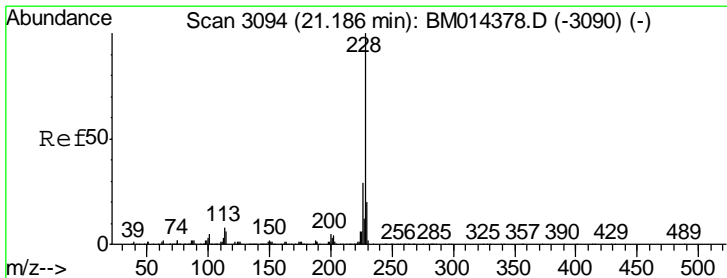
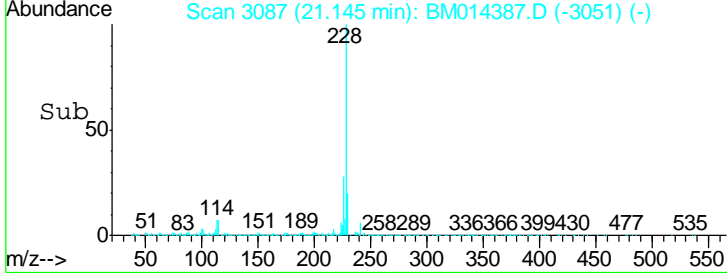
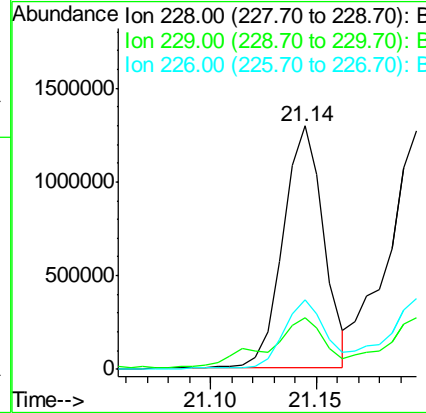
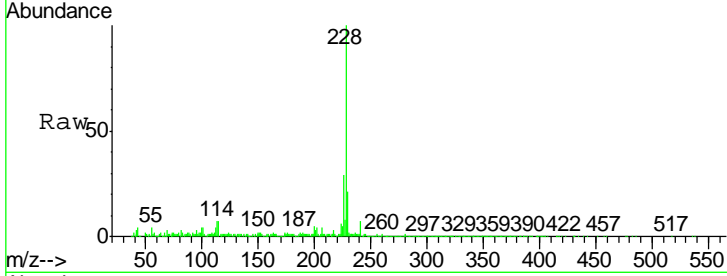
#80  
 Benzo(a)anthracene  
 Concen: 52.444 ng/ul  
 RT: 21.14 min Scan# 3087  
 Delta R.T. 0.01 min  
 Lab File: BM014387.D  
 Acq: 27 Feb 2018 17:49

Instrument :  
 BNA\_M  
 ClientSampled :  
 BE5Z0

Tgt Ion	Resp	Lower	Upper
228	1715757		
229	21.0	15.4	23.0
226	28.6	21.4	32.0

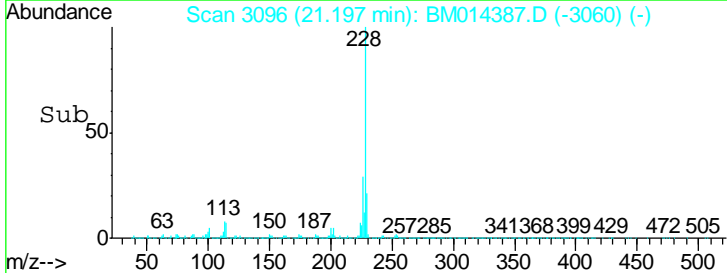
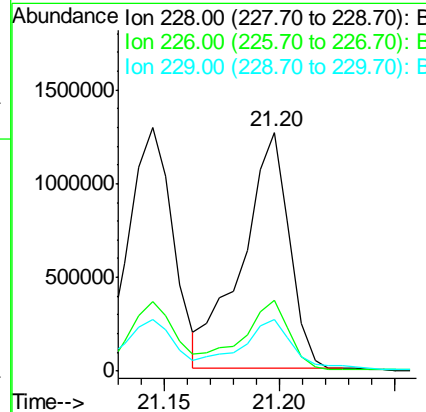
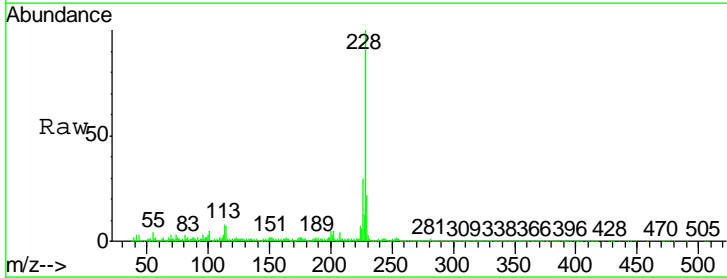
Manual Integrations  
 APPROVED

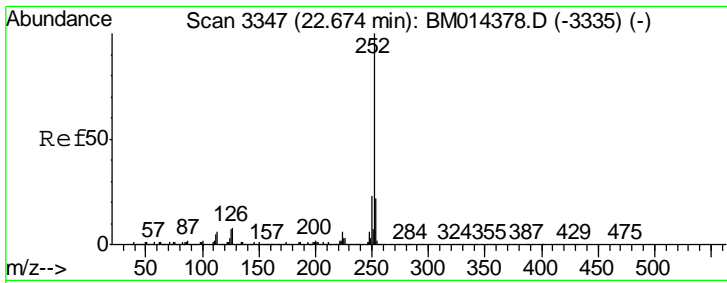
Sohil  
 2/28/2018 1:59:16 PM



#82  
 Chrysene  
 Concen: 58.499 ng/ul  
 RT: 21.20 min Scan# 3096  
 Delta R.T. 0.01 min  
 Lab File: BM014387.D  
 Acq: 27 Feb 2018 17:49

Tgt Ion	Resp	Lower	Upper
228	1785394		
226	29.7	23.4	35.2
229	21.9	15.5	23.3





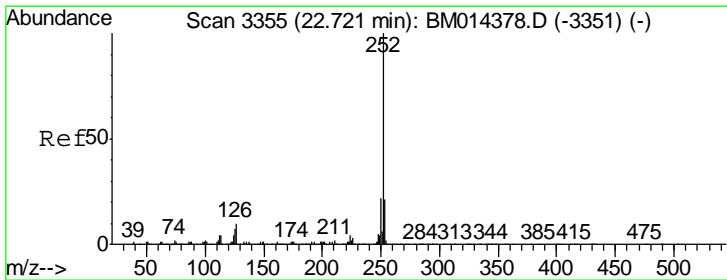
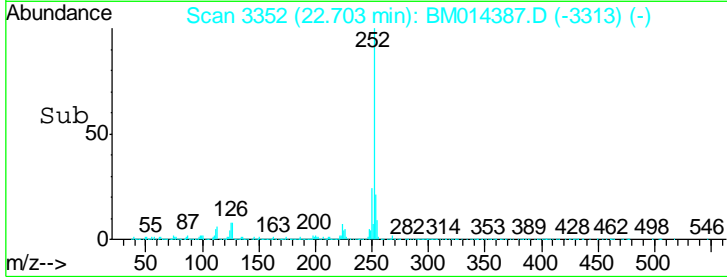
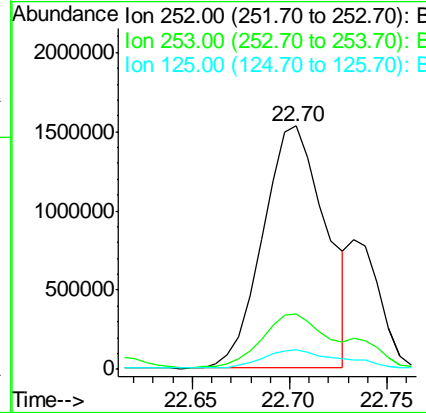
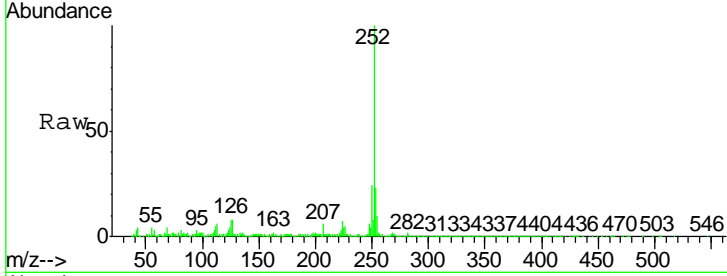
#85  
 Benzo(b)fluoranthene  
 Concen: 99.182 ng/ul  
 RT: 22.70 min Scan# 3352  
 Delta R.T. 0.03 min  
 Lab File: BM014387.D  
 Acq: 27 Feb 2018 17:49

Instrument :  
 BNA\_M  
 ClientSampled :  
 BE5Z0

Tgt Ion	Ratio	Lower	Upper
252	100		
253	22.7	17.9	26.9
125	8.1	3.6	5.4#

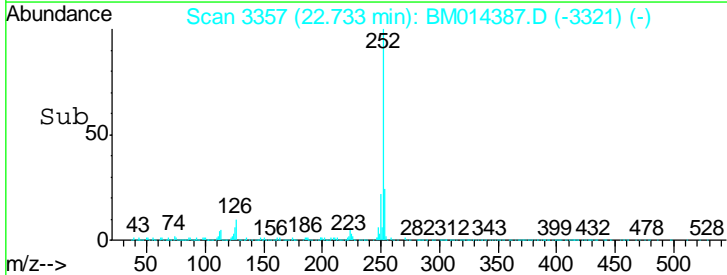
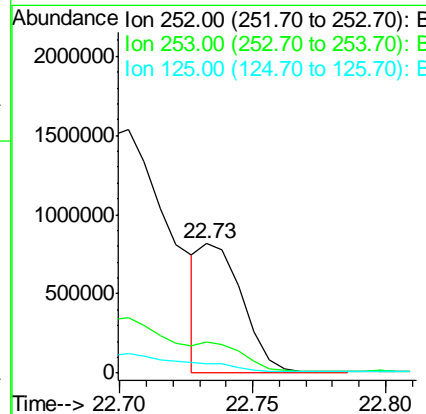
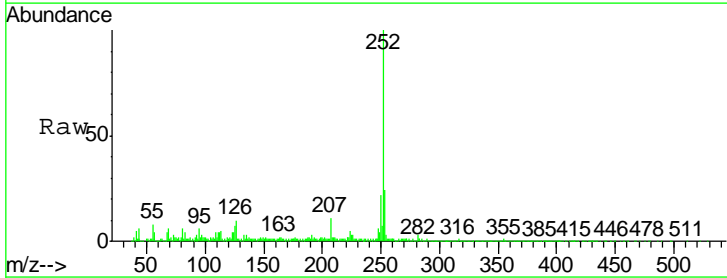
Manual Integrations  
 APPROVED

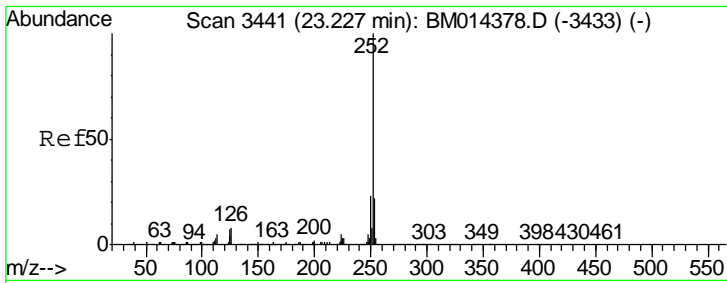
Sohil  
 2/28/2018 1:59:16 PM



#86  
 Benzo(k)fluoranthene  
 Concen: 26.907 ng/ul m  
 RT: 22.73 min Scan# 3357  
 Delta R.T. 0.01 min  
 Lab File: BM014387.D  
 Acq: 27 Feb 2018 17:49

Tgt Ion	Ratio	Lower	Upper
252	100		
253	24.2	17.1	25.7
125	7.3	3.4	5.2#





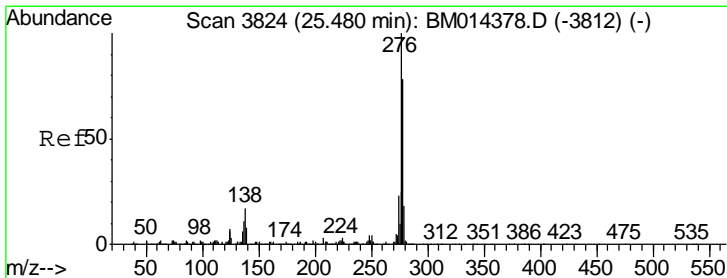
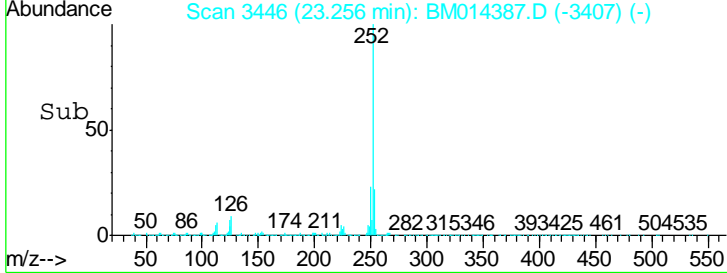
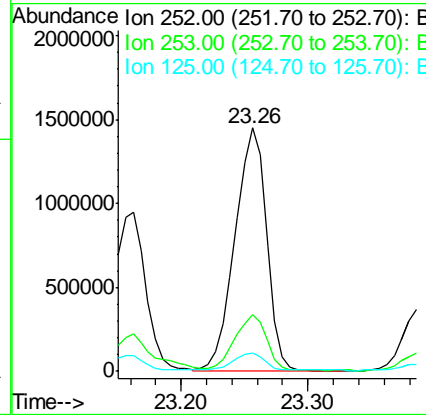
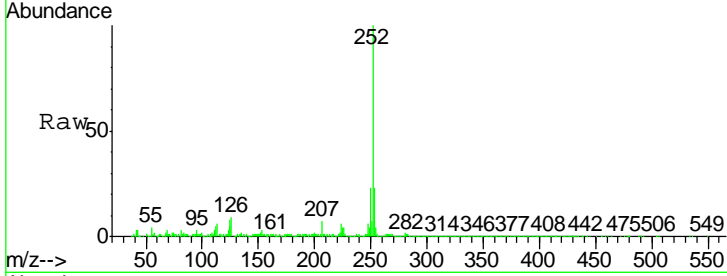
#88  
 Benzo(a)pyrene  
 Concen: 80.741 ng/ul  
 RT: 23.26 min Scan# 3446  
 Delta R.T. 0.03 min  
 Lab File: BM014387.D  
 Acq: 27 Feb 2018 17:49

Instrument :  
 BNA\_M  
 Client Sampled :  
 BE5Z0

Tgt Ion	Resp	Lower	Upper
252	100		
253	23.1	18.2	27.2
125	7.7	4.0	6.0

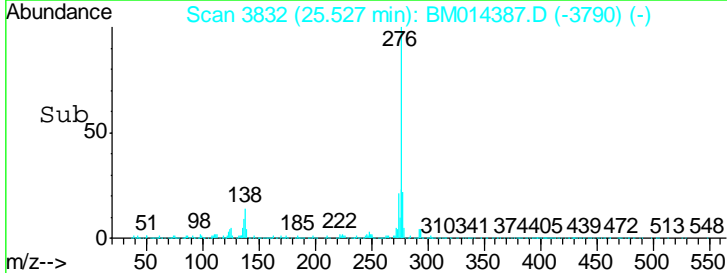
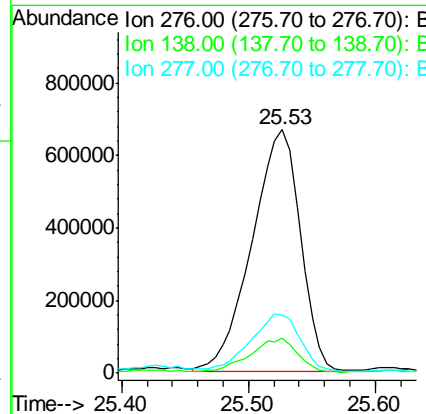
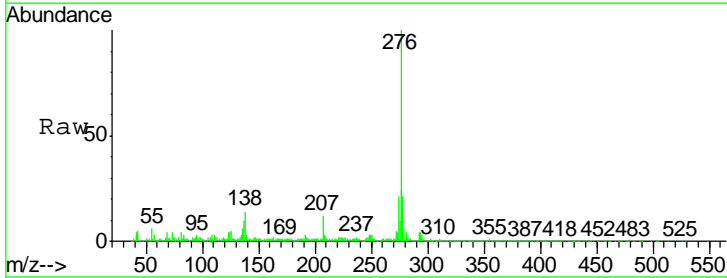
Manual Integrations  
 APPROVED

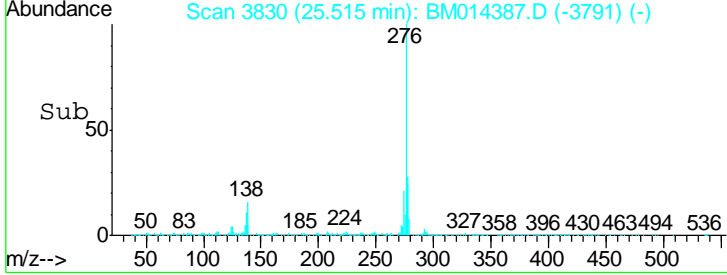
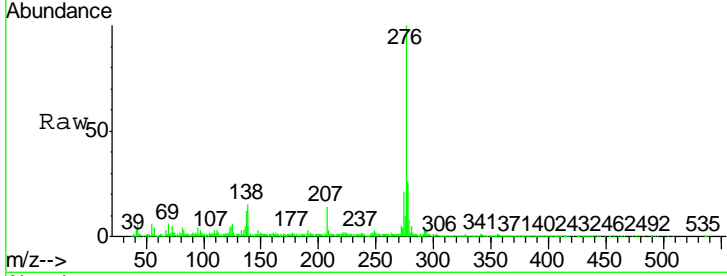
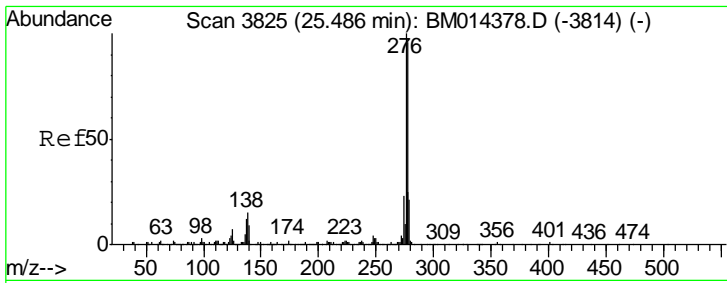
Sohil  
 2/28/2018 1:59:16 PM



#89  
 Indeno(1,2,3-cd)pyrene  
 Concen: 58.909 ng/ul  
 RT: 25.53 min Scan# 3832  
 Delta R.T. 0.05 min  
 Lab File: BM014387.D  
 Acq: 27 Feb 2018 17:49

Tgt Ion	Resp	Lower	Upper
276	100		
138	14.2	9.3	13.9
277	24.1	19.9	29.9



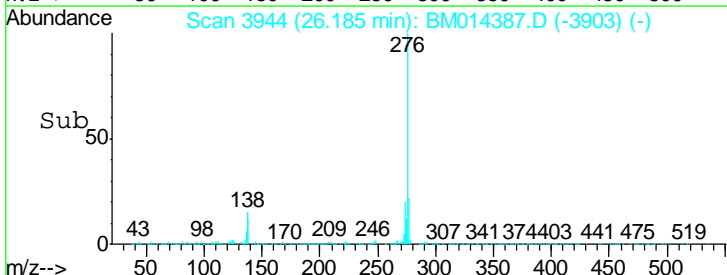
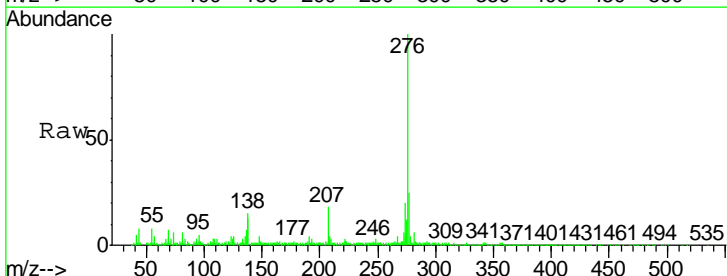
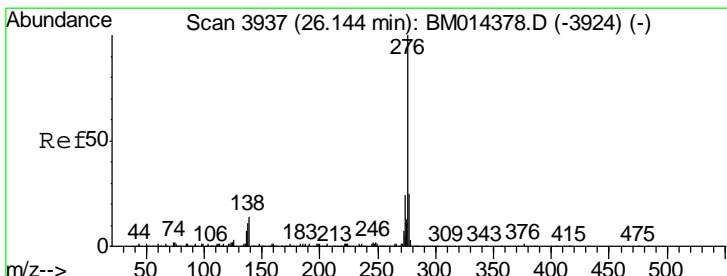
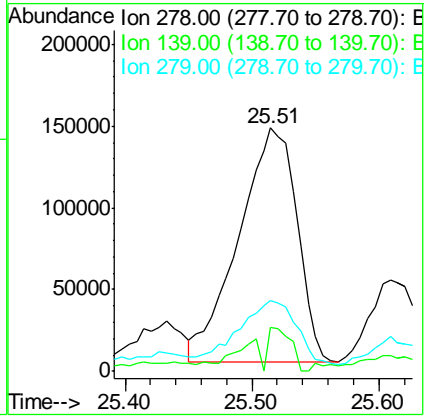


#90  
 Dibenzo(a,h)anthracene  
 Concen: 18.382 ng/ul  
 RT: 25.51 min Scan# 3830  
 Delta R.T. 0.03 min  
 Lab File: BM014387.D  
 Acq: 27 Feb 2018 17:49

Tgt Ion	Ratio	Lower	Upper
278	100		
139	18.0	5.8	8.8#
279	29.2	18.6	27.8#

Instrument :  
 BNA\_M  
 Client Sampled :  
 BE5Z0

Manual Integrations  
 APPROVED  
 Sohil  
 2/28/2018 1:59:16 PM



#91  
 Benzo(g,h,i)perylene  
 Concen: 54.346 ng/ul  
 RT: 26.19 min Scan# 3944  
 Delta R.T. 0.04 min  
 Lab File: BM014387.D  
 Acq: 27 Feb 2018 17:49

Tgt Ion	Ratio	Lower	Upper
276	100		
138	15.0	8.5	12.7#
277	24.9	18.6	28.0

