

Data Path : Z:\svoasrv\HPCHEM1\BNA_N\Data\BN022824\
 Data File : BN030135.D
 Acq On : 28 Feb 2024 18:25
 Operator : MA/JU
 Sample : PB159159BS
 Misc :
 ALS Vial : 41 Sample Multiplier: 1

Instrument :
 BNA_M
 ClientSampleId :
 SLCS159

Quant Time: Feb 28 23:06:25 2024
 Quant Method : Z:\svoasrv\HPCHEM1\BNA_N\Methods\SFAM-EPA-SIM-BN020624.M
 Quant Title : ASP BNA STANDARDS FOR 5 POINT CALIBRATION
 QLast Update : Tue Feb 27 23:49:29 2024
 Response via : Initial Calibration

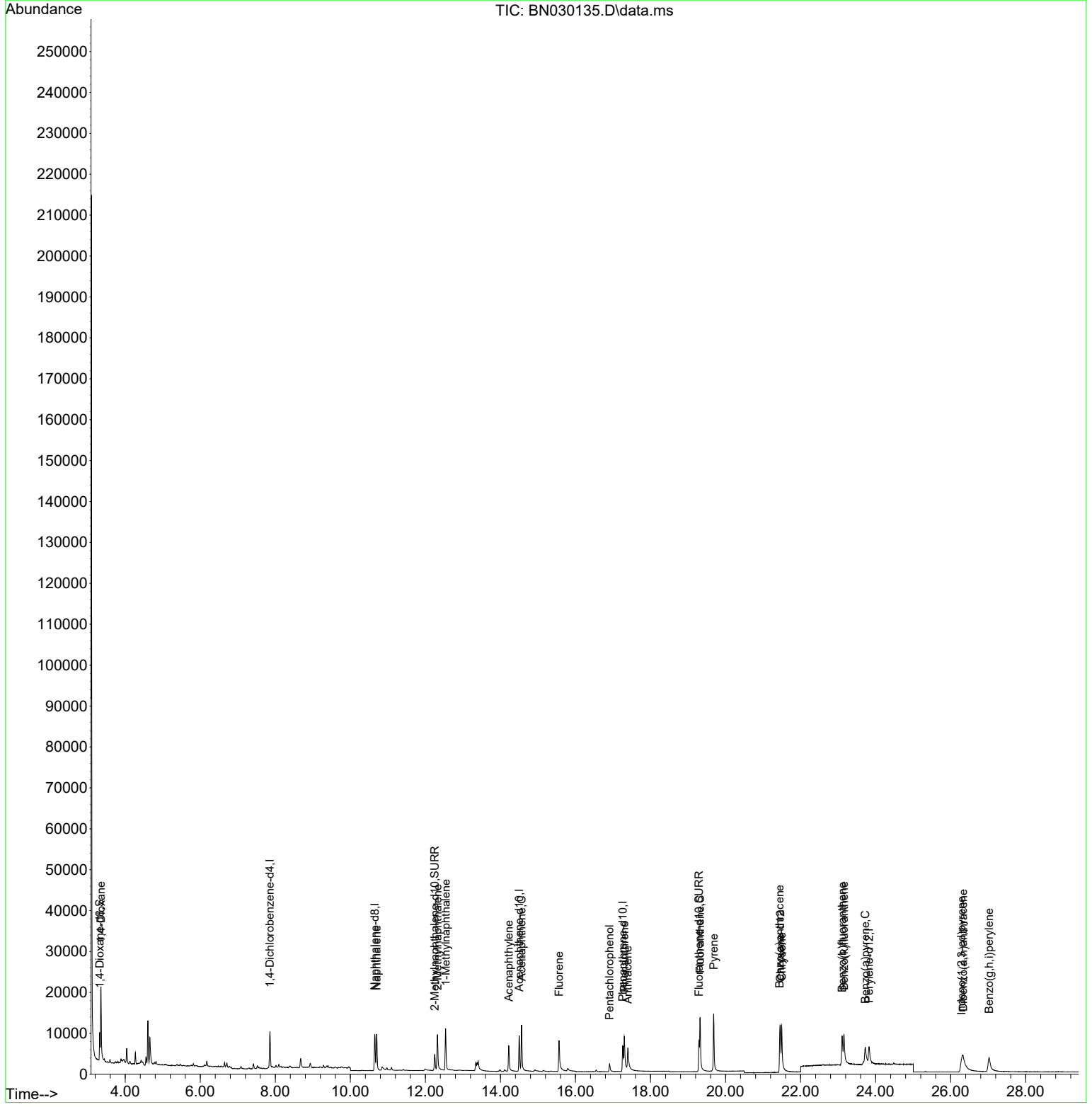
Compound	R.T.	QIon	Response	Conc	Units	Dev(Min)
Internal Standards						
1) 1,4-Dichlorobenzene-d4	7.855	152	4753	0.400	ng/ul	0.00
4) Naphthalene-d8	10.650	136	13268	0.400	ng/ul	0.00
9) Acenaphthene-d10	14.502	164	5756	0.400	ng/ul	0.00
13) Phenanthrene-d10	17.259	188	10576	0.400	ng/ul	0.00
17) Chrysene-d12	21.458	240	8058	0.400	ng/ul	0.00
23) Perylene-d12	23.826	264	7128	0.400	ng/ul #	0.00
System Monitoring Compounds						
3) 1,4-Dioxane-d8	3.319	96	4112	0.694	ng/ul	0.00
6) 2-Methylnaphthalene-d10	12.245	152	6002	0.356	ng/ul	0.00
18) Fluoranthene-d10	19.290	212	10410	0.393	ng/ul	0.00
Target Compounds						
						Qvalue
2) 1,4-Dioxane	3.353	88	11796	1.828	ng/ul#	85
5) Naphthalene	10.700	128	13212	0.354	ng/ul	99
7) 2-Methylnaphthalene	12.322	142	7273	0.340	ng/ul	99
8) 1-Methylnaphthalene	12.542	142	7760	0.356	ng/ul	99
10) Acenaphthylene	14.224	152	9740	0.347	ng/ul	98
11) Acenaphthene	14.562	153	7889	0.370	ng/ul	97
12) Fluorene	15.561	166	7941	0.356	ng/ul	98
14) Pentachlorophenol	16.909	266	1713	0.726	ng/ul#	48
15) Phenanthrene	17.301	178	11907	0.360	ng/ul	98
16) Anthracene	17.394	178	10053	0.362	ng/ul	98
19) Fluoranthene	19.323	202	13846	0.374	ng/ul	98
20) Pyrene	19.685	202	14707	0.388	ng/ul	97
21) Benzo(a)anthracene	21.443	228	10000	0.344	ng/ul	99
22) Chrysene	21.496	228	12509	0.393	ng/ul	100
24) Benzo(b)fluoranthene	23.106	252	11318	0.422	ng/ul	99
25) Benzo(k)fluoranthene	23.156	252	13410	0.451	ng/ul	97
26) Benzo(a)pyrene	23.723	252	10328	0.410	ng/ul	95
27) Indeno(1,2,3-cd)pyrene	26.285	276	12090	0.395	ng/ul#	100
28) Dibenzo(a,h)anthracene	26.332	278	9242	0.385	ng/ul#	92
29) Benzo(g,h,i)perylene	27.023	276	11313	0.407	ng/ul	96

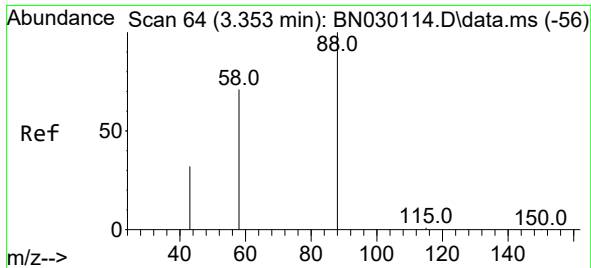
(#) = qualifier out of range (m) = manual integration (+) = signals summed

Data Path : Z:\svoasrv\HPCHEM1\BNA_N\Data\BN022824\
 Data File : BN030135.D
 Acq On : 28 Feb 2024 18:25
 Operator : MA/JU
 Sample : PB159159BS
 Misc :
 ALS Vial : 41 Sample Multiplier: 1

Instrument :
 BNA_M
ClientSampleId :
 SLCS159

Quant Time: Feb 28 23:06:25 2024
 Quant Method : Z:\svoasrv\HPCHEM1\BNA_N\Methods\SFAM-EPA-SIM-BN020624.M
 Quant Title : ASP BNA STANDARDS FOR 5 POINT CALIBRATION
 QLast Update : Tue Feb 27 23:49:29 2024
 Response via : Initial Calibration



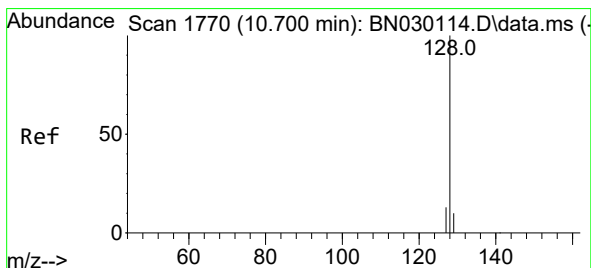
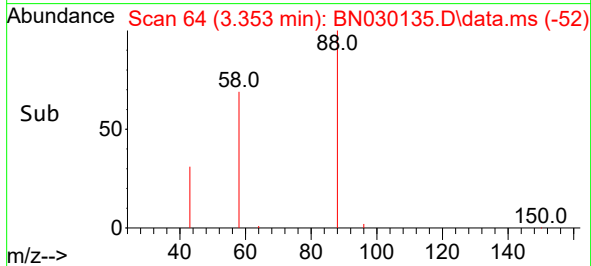
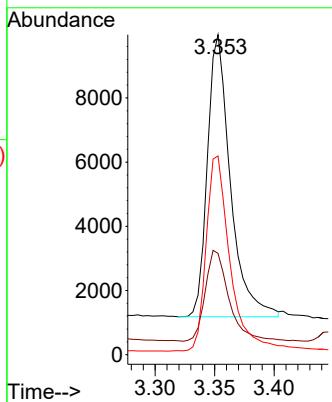
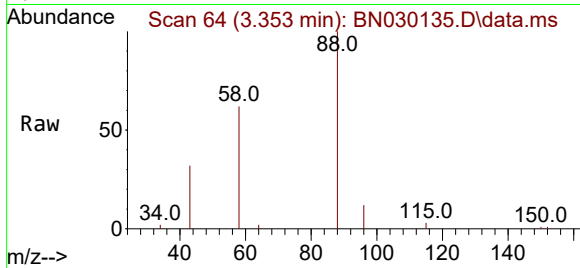


#2
 1,4-Dioxane
 Concen: 1.828 ng/ul
 RT: 3.353 min Scan# 64
 Delta R.T. 0.000 min
 Lab File: BN030135.D
 Acq: 28 Feb 2024 18:25

Instrument :
 BNA_M
 ClientSampleId :
 SLCS159

Tgt Ion: 88 Resp: 11796

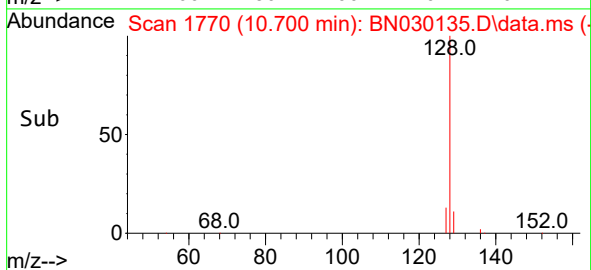
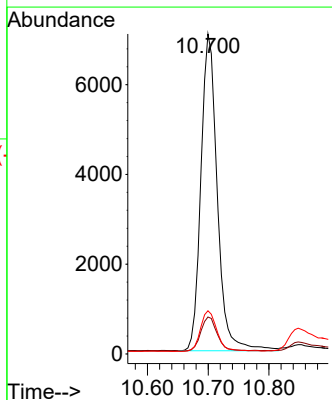
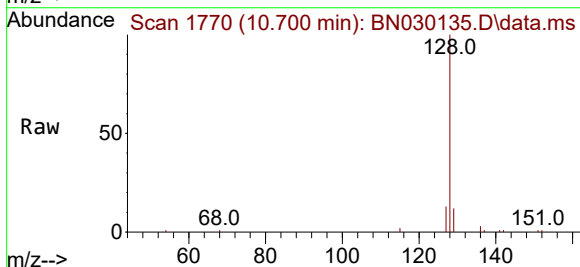
Ion	Ratio	Lower	Upper
88	100		
43	31.6	21.8	32.6
58	62.1	39.3	58.9#

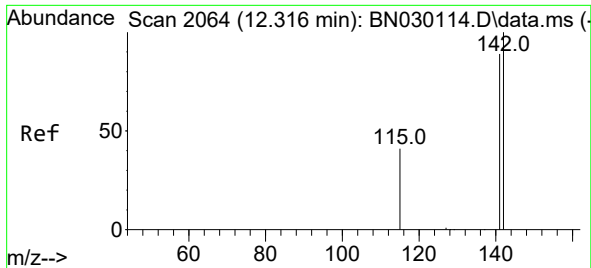


#5
 Naphthalene
 Concen: 0.354 ng/ul
 RT: 10.700 min Scan# 1770
 Delta R.T. 0.000 min
 Lab File: BN030135.D
 Acq: 28 Feb 2024 18:25

Tgt Ion: 128 Resp: 13212

Ion	Ratio	Lower	Upper
128	100		
129	11.6	9.1	13.7
127	13.5	11.0	16.6

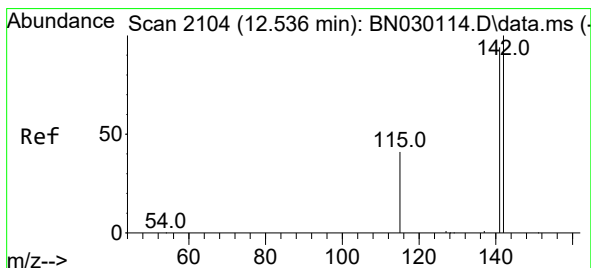
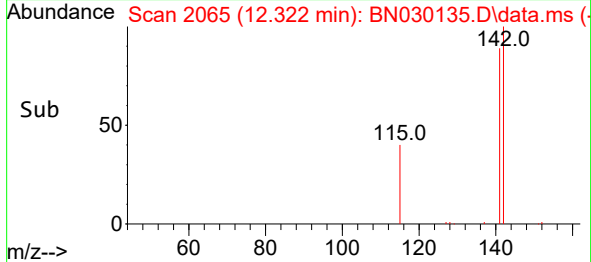
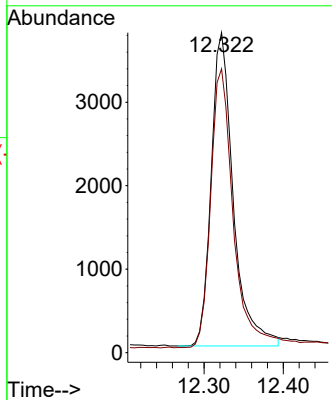
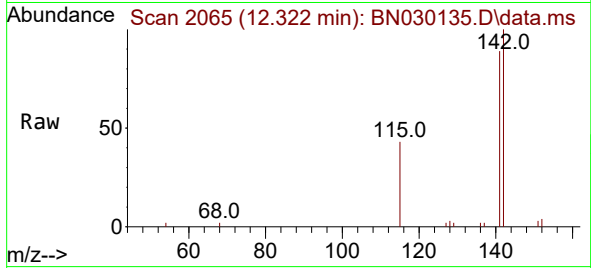




#7
 2-Methylnaphthalene
 Concen: 0.340 ng/u1
 RT: 12.322 min Scan# 2065
 Delta R.T. 0.006 min
 Lab File: BN030135.D
 Acq: 28 Feb 2024 18:25

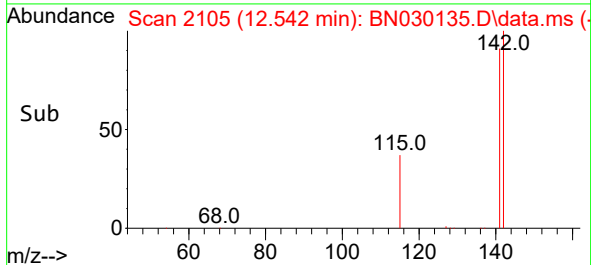
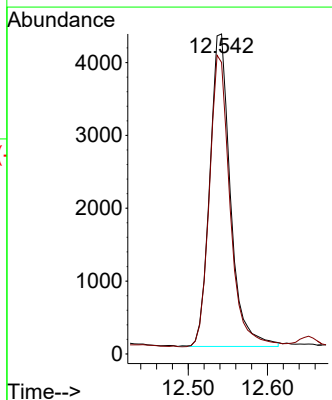
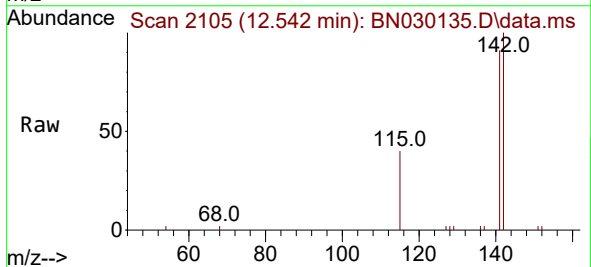
Instrument :
 BNA_M
 ClientSampleId :
 SLCS159

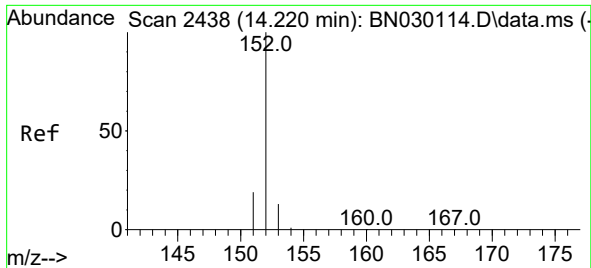
Tgt Ion:142 Resp: 7273
 Ion Ratio Lower Upper
 142 100
 141 90.7 71.5 107.3



#8
 1-Methylnaphthalene
 Concen: 0.356 ng/u1
 RT: 12.542 min Scan# 2105
 Delta R.T. 0.006 min
 Lab File: BN030135.D
 Acq: 28 Feb 2024 18:25

Tgt Ion:142 Resp: 7760
 Ion Ratio Lower Upper
 142 100
 141 93.1 73.9 110.9

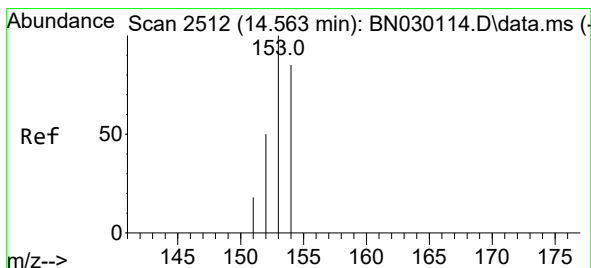
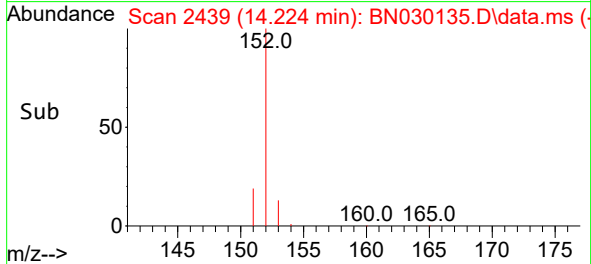
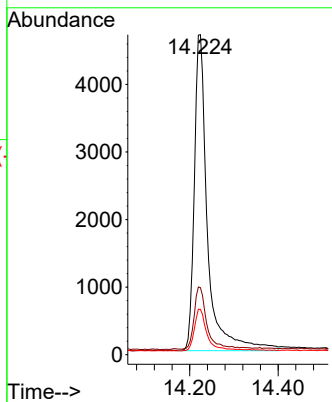
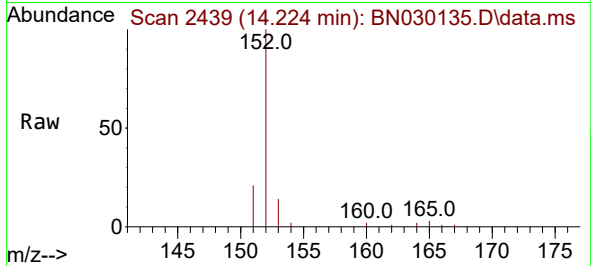




#10
 Acenaphthylene
 Concen: 0.347 ng/u1
 RT: 14.224 min Scan# 2438
 Delta R.T. 0.005 min
 Lab File: BN030135.D
 Acq: 28 Feb 2024 18:25

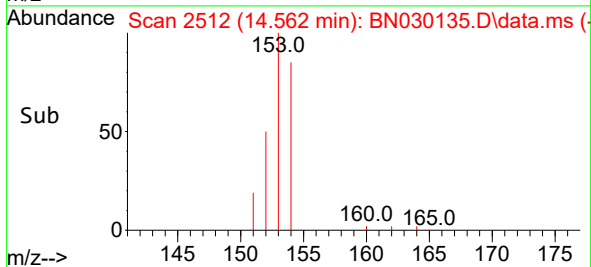
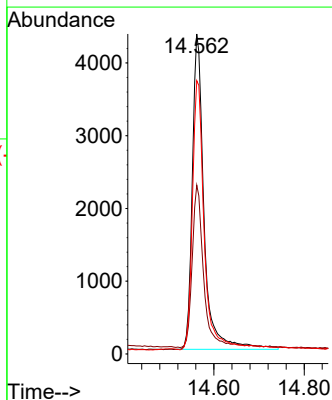
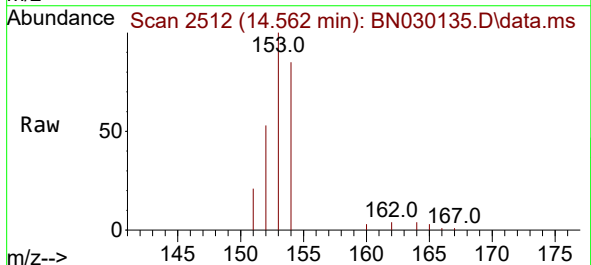
Instrument :
 BNA_M
 ClientSampleId :
 SLCS159

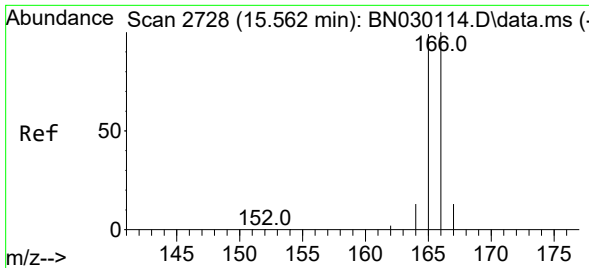
Tgt Ion	Resp	Lower	Upper
152	9740		
151	20.9	15.8	23.8
153	14.1	10.9	16.3



#11
 Acenaphthene
 Concen: 0.370 ng/u1
 RT: 14.562 min Scan# 2512
 Delta R.T. 0.000 min
 Lab File: BN030135.D
 Acq: 28 Feb 2024 18:25

Tgt Ion	Resp	Lower	Upper
153	7889		
152	52.7	41.5	62.3
154	85.4	70.9	106.3

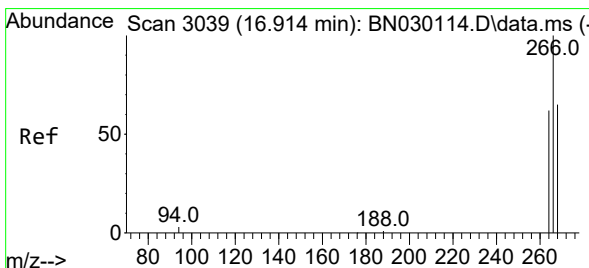
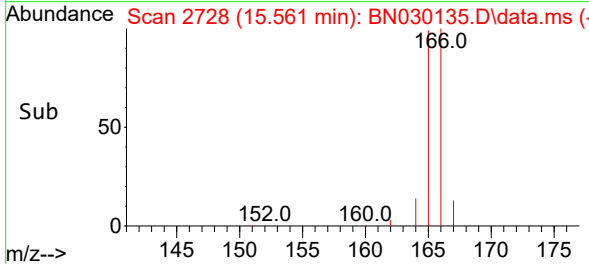
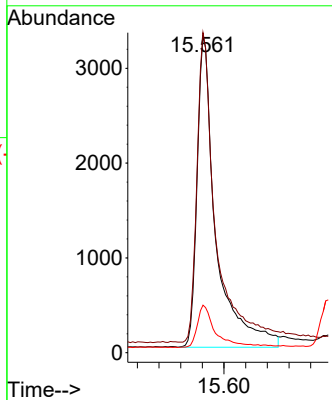
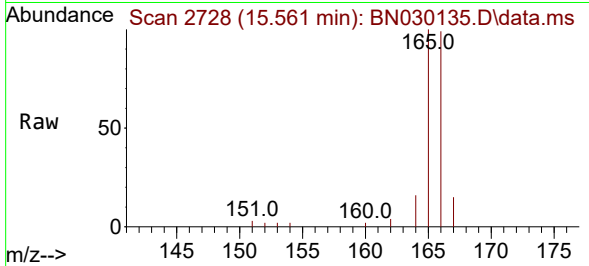




#12
 Fluorene
 Concen: 0.356 ng/u1
 RT: 15.561 min Scan# 21
 Delta R.T. 0.000 min
 Lab File: BN030135.D
 Acq: 28 Feb 2024 18:25

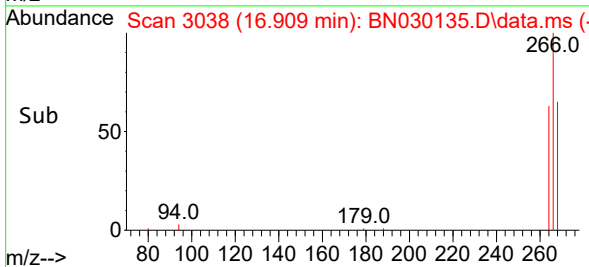
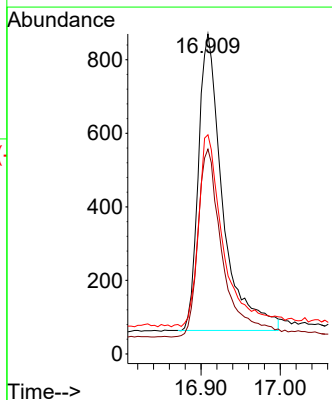
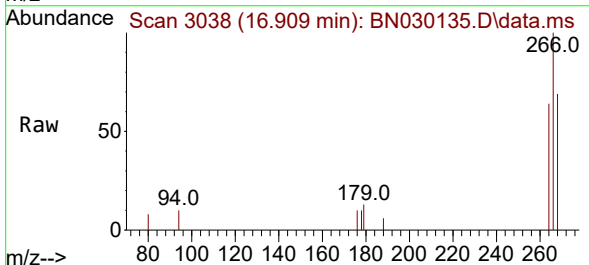
Instrument :
 BNA_M
 ClientSampleId :
 SLCS159

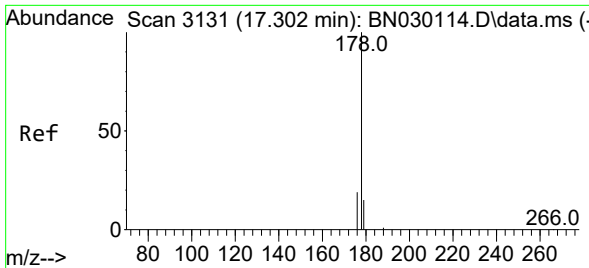
Tgt Ion	Resp	Lower	Upper
166	7941		
165	100.7	78.6	117.8
167	15.0	11.5	17.3



#14
 Pentachlorophenol
 Concen: 0.726 ng/u1
 RT: 16.909 min Scan# 3038
 Delta R.T. -0.008 min
 Lab File: BN030135.D
 Acq: 28 Feb 2024 18:25

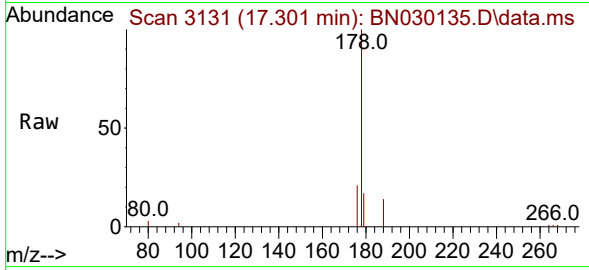
Tgt Ion	Resp	Lower	Upper
266	1713		
264	64.6	0.0	0.0#
268	66.4	0.2	0.2#





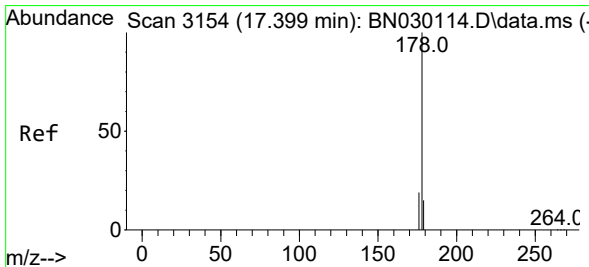
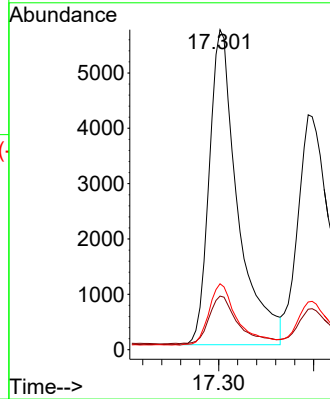
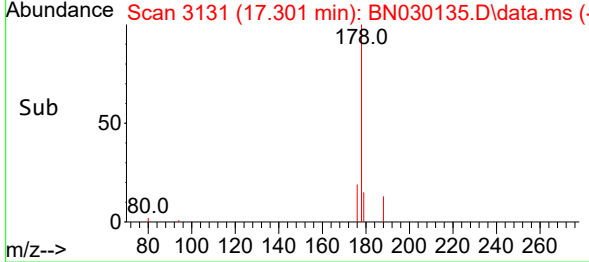
#15
 Phenanthrene
 Concen: 0.360 ng/u1
 RT: 17.301 min Scan# 3113
 Delta R.T. 0.000 min
 Lab File: BN030135.D
 Acq: 28 Feb 2024 18:25

Instrument :
 BNA_M
 ClientSampleId :
 SLCS159

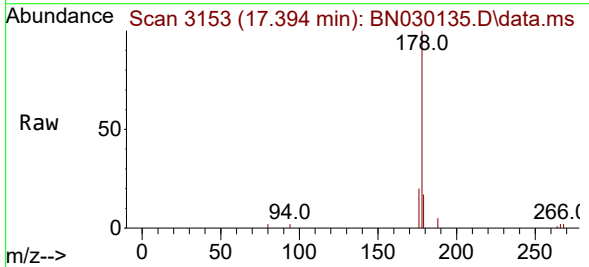


Tgt Ion:178 Resp: 11907

Ion	Ratio	Lower	Upper
178	100		
179	16.7	12.6	18.8
176	20.6	15.7	23.5

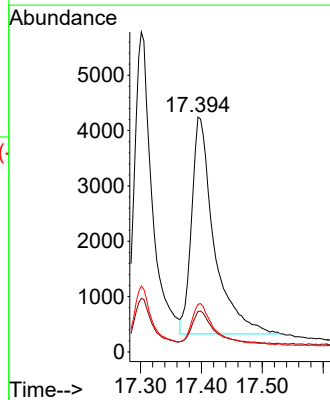
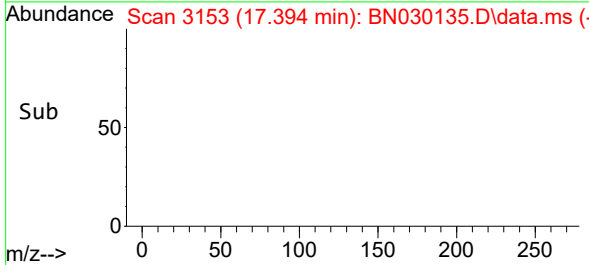


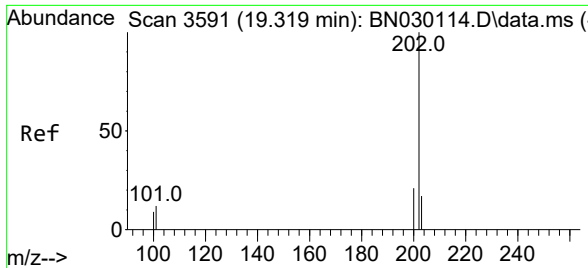
#16
 Anthracene
 Concen: 0.362 ng/u1
 RT: 17.394 min Scan# 3153
 Delta R.T. -0.004 min
 Lab File: BN030135.D
 Acq: 28 Feb 2024 18:25



Tgt Ion:178 Resp: 10053

Ion	Ratio	Lower	Upper
178	100		
179	17.2	12.9	19.3
176	20.3	15.8	23.8



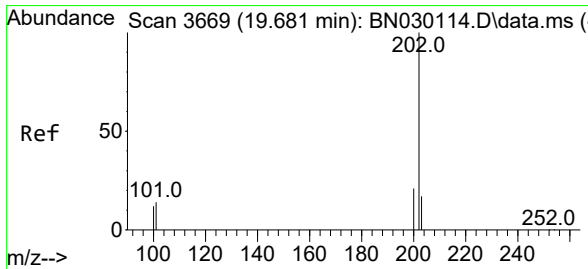
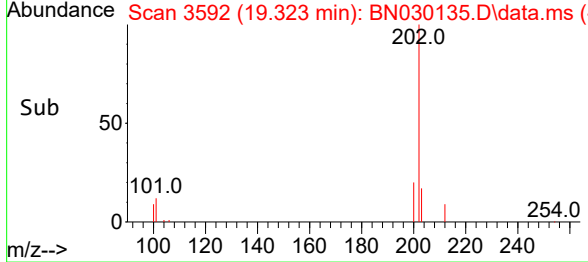
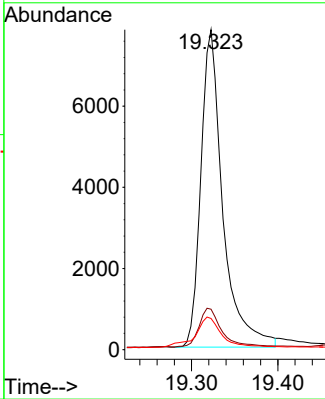
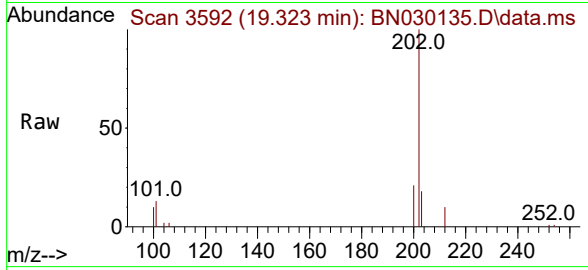


#19
 Fluoranthene
 Concen: 0.374 ng/u1
 RT: 19.323 min Scan# 3592
 Delta R.T. 0.000 min
 Lab File: BN030135.D
 Acq: 28 Feb 2024 18:25

Instrument :
 BNA_M
 ClientSampleId :
 SLCS159

Tgt Ion:202 Resp: 13846

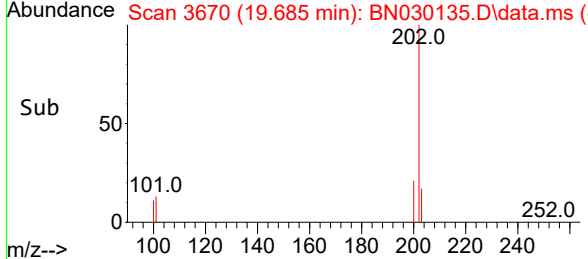
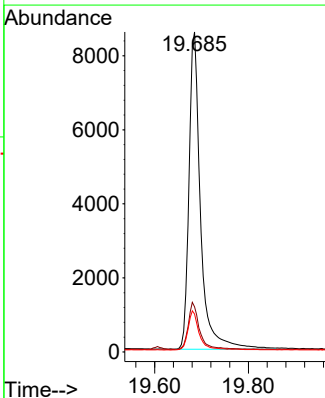
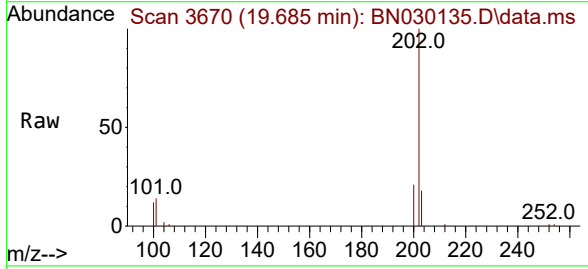
Ion	Ratio	Lower	Upper
202	100		
101	12.7	10.4	15.6
100	9.7	8.5	12.7

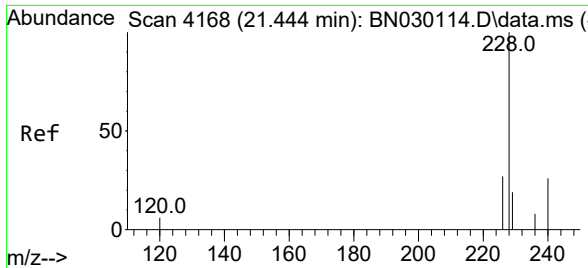


#20
 Pyrene
 Concen: 0.388 ng/u1
 RT: 19.685 min Scan# 3670
 Delta R.T. 0.000 min
 Lab File: BN030135.D
 Acq: 28 Feb 2024 18:25

Tgt Ion:202 Resp: 14707

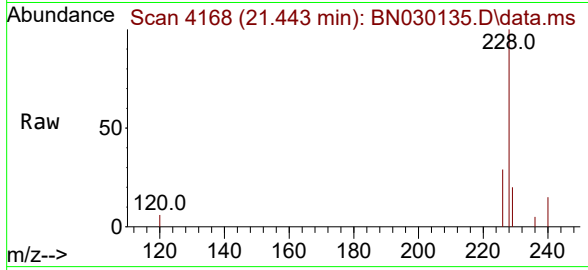
Ion	Ratio	Lower	Upper
202	100		
101	14.1	12.5	18.7
100	11.9	10.0	15.0



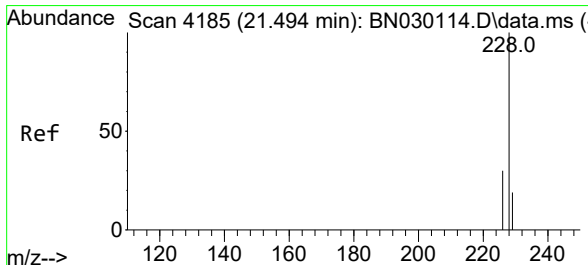
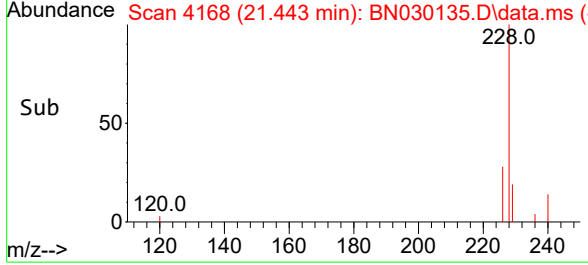
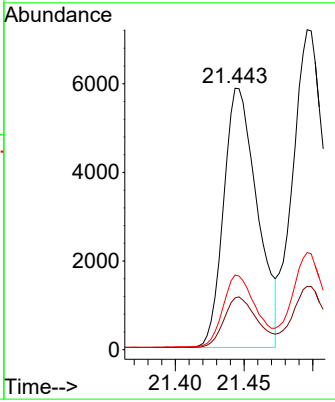


#21
 Benzo(a)anthracene
 Concen: 0.344 ng/u1
 RT: 21.443 min Scan# 4118
 Delta R.T. -0.007 min
 Lab File: BN030135.D
 Acq: 28 Feb 2024 18:25

Instrument : BNA_M
 ClientSampleId : SLCS159

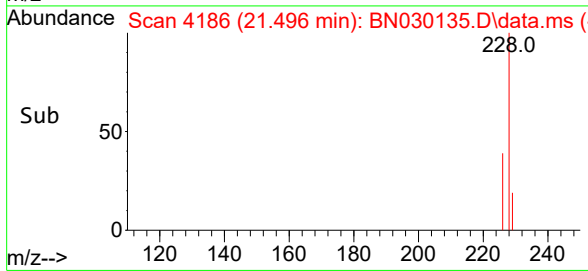
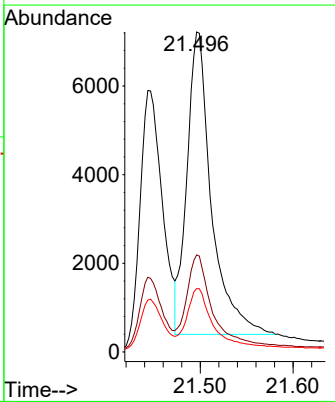
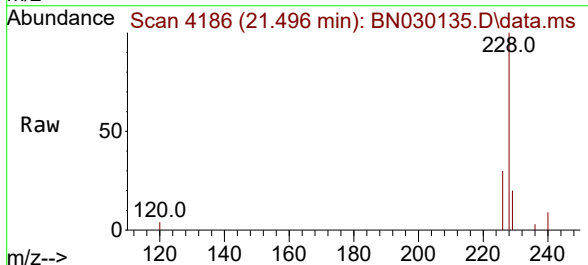


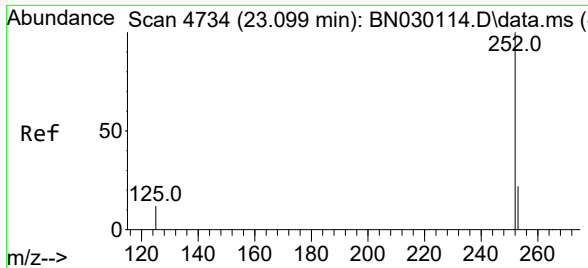
Tgt Ion:228 Resp: 10000
 Ion Ratio Lower Upper
 228 100
 229 19.8 15.7 23.5
 226 28.6 22.2 33.4



#22
 Chrysene
 Concen: 0.393 ng/u1
 RT: 21.496 min Scan# 4186
 Delta R.T. -0.004 min
 Lab File: BN030135.D
 Acq: 28 Feb 2024 18:25

Tgt Ion:228 Resp: 12509
 Ion Ratio Lower Upper
 228 100
 226 30.3 24.2 36.2
 229 19.8 15.7 23.5



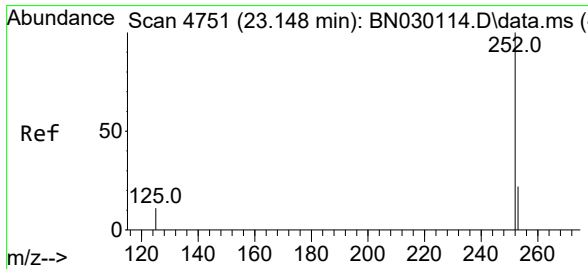
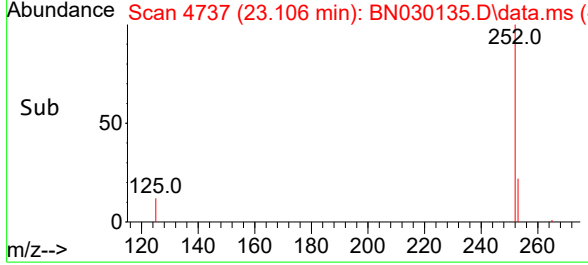
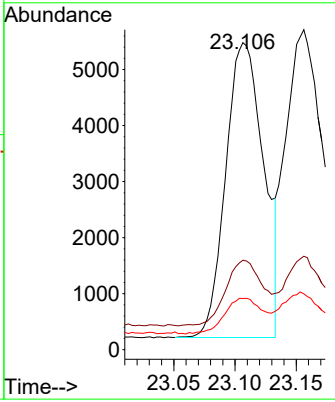
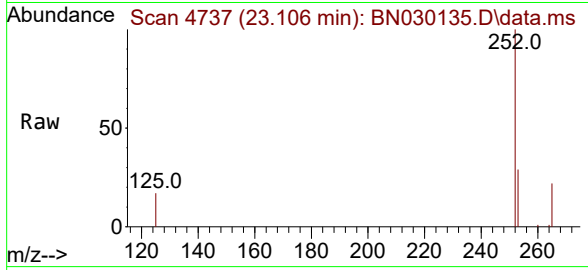


#24
 Benzo(b)fluoranthene
 Concen: 0.422 ng/uI
 RT: 23.106 min Scan# 4737
 Delta R.T. -0.002 min
 Lab File: BN030135.D
 Acq: 28 Feb 2024 18:25

Instrument : BNA_M
 ClientSampleId : SLCS159

Tgt Ion:252 Resp: 11318

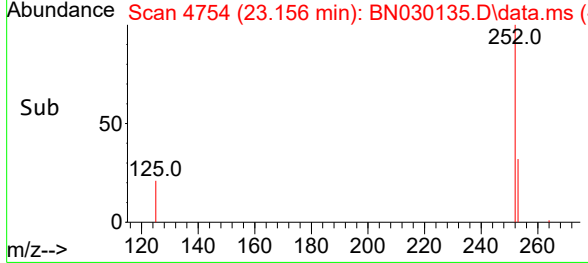
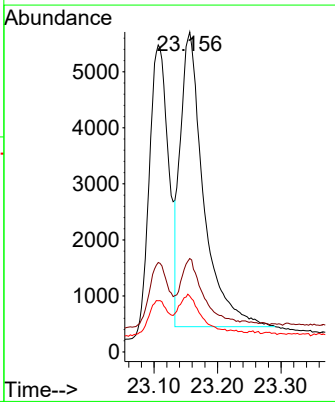
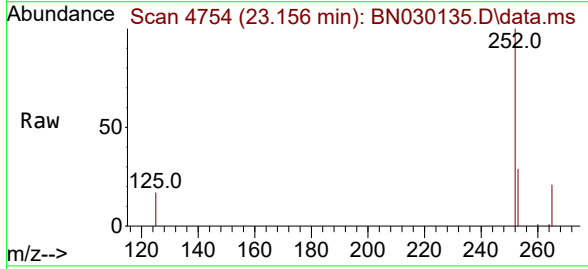
Ion	Ratio	Lower	Upper
252	100		
253	29.1	0.0	56.8
125	16.7	0.0	32.4

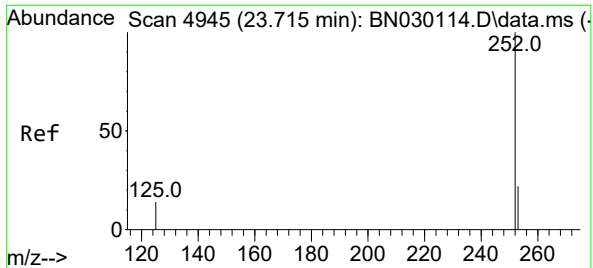


#25
 Benzo(k)fluoranthene
 Concen: 0.451 ng/uI
 RT: 23.156 min Scan# 4754
 Delta R.T. 0.001 min
 Lab File: BN030135.D
 Acq: 28 Feb 2024 18:25

Tgt Ion:252 Resp: 13410

Ion	Ratio	Lower	Upper
252	100		
253	29.2	22.6	33.8
125	17.4	15.3	22.9

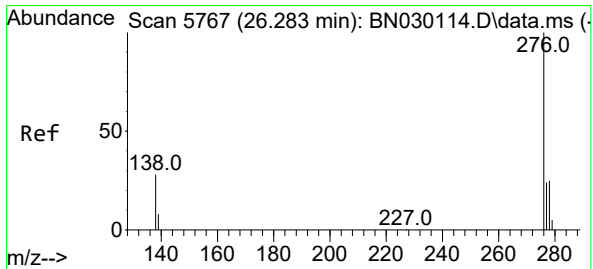
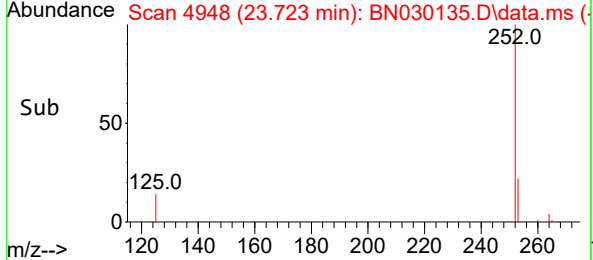
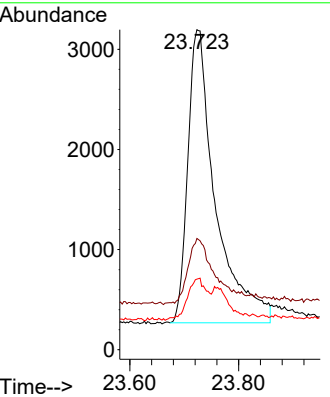
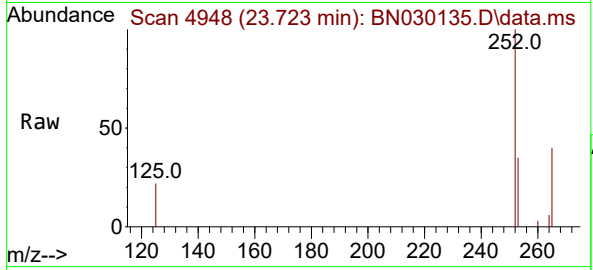




#26
 Benzo(a)pyrene
 Concen: 0.410 ng/u1
 RT: 23.723 min Scan# 4948
 Delta R.T. -0.002 min
 Lab File: BN030135.D
 Acq: 28 Feb 2024 18:25

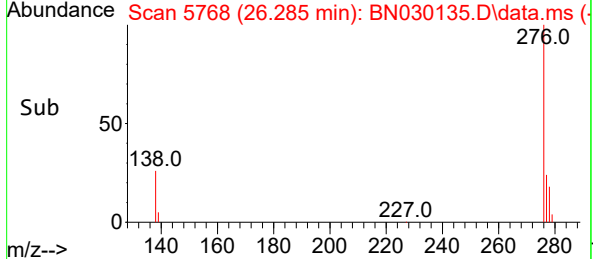
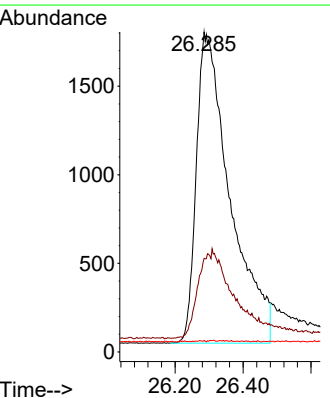
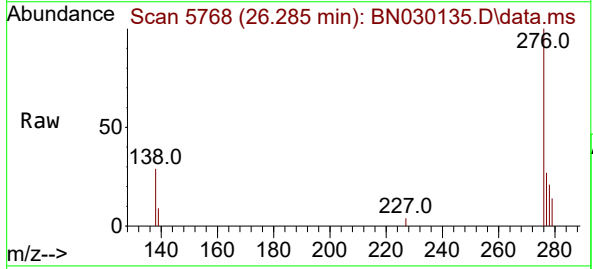
Instrument : BNA_M
 ClientSampleId : SLCS159

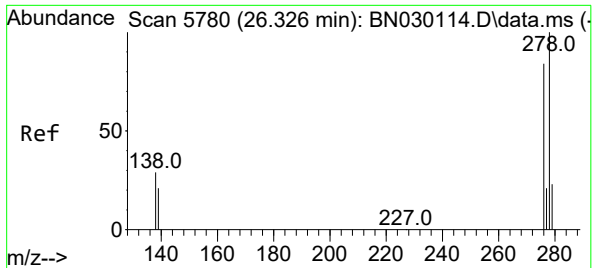
Tgt Ion	Resp	Lower	Upper
252	10328		
253	34.8	25.4	38.0
125	22.1	16.0	24.0



#27
 Indeno(1,2,3-cd)pyrene
 Concen: 0.395 ng/u1
 RT: 26.285 min Scan# 5768
 Delta R.T. -0.008 min
 Lab File: BN030135.D
 Acq: 28 Feb 2024 18:25

Tgt Ion	Resp	Lower	Upper
276	12090		
276	100		
138	0.0	0.0	0.0
227	0.1	0.0	0.0

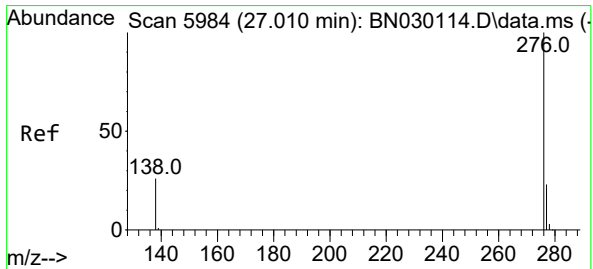
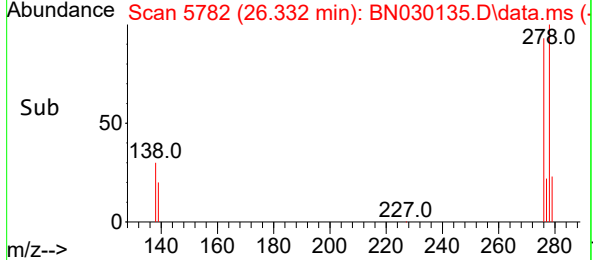
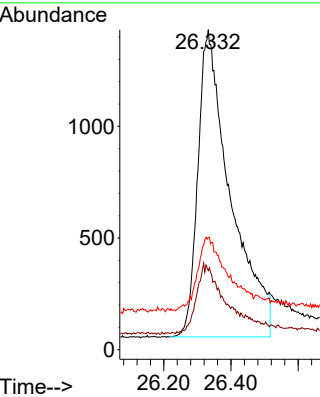
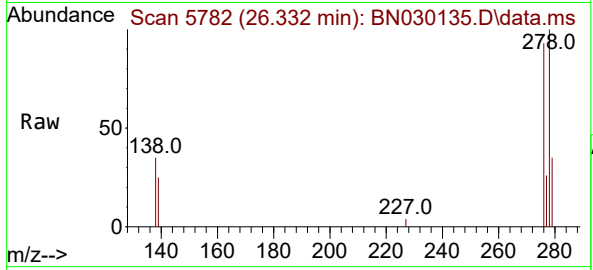




#28
 Dibenzo(a,h)anthracene
 Concen: 0.385 ng/ul
 RT: 26.332 min Scan# 51
 Delta R.T. 0.002 min
 Lab File: BN030135.D
 Acq: 28 Feb 2024 18:25

Instrument : BNA_M
 ClientSampleId : SLCS159

Tgt Ion	Resp	Lower	Upper
278	100		
139	24.7	19.0	28.4
279	35.1	22.6	34.0



#29
 Benzo(g,h,i)perylene
 Concen: 0.407 ng/ul
 RT: 27.023 min Scan# 5988
 Delta R.T. 0.005 min
 Lab File: BN030135.D
 Acq: 28 Feb 2024 18:25

Tgt Ion	Resp	Lower	Upper
276	100		
138	29.4	24.6	37.0
277	27.0	19.7	29.5

