

Data Path : Z:\svoasrv\HPCHEM1\BNA_M\Data\BM022824\
 Data File : BM044419.D
 Acq On : 29 Feb 2024 00:13
 Operator : MA/JU
 Sample : PB159335BS
 Misc :
 ALS Vial : 17 Sample Multiplier: 1

Instrument :
 BNA_M
 ClientSampleId :
 SLC335

Quant Time: Feb 29 00:59:35 2024
 Quant Method : Z:\svoasrv\HPCHEM1\BNA_M\Methods\SFAM-EPA-BM022324.MA.M
 Quant Title : SVOA CALIBRATION
 QLast Update : Tue Feb 27 23:05:48 2024
 Response via : Initial Calibration

Compound	R.T.	QIon	Response	Conc	Units	Dev(Min)
Internal Standards						
1) 1,4-Dichlorobenzene-d4	7.951	152	198043	20.000	ng/ul	0.01
20) Naphthalene-d8	10.757	136	852871	20.000	ng/ul	0.01
38) Acenaphthene-d10	14.592	164	493538	20.000	ng/ul	0.01
64) Phenanthrene-d10	17.339	188	1020846	20.000	ng/ul	0.00
79) Chrysene-d12	21.533	240	868176	20.000	ng/ul	0.00
88) Perylene-d12	23.956	264	926100	20.000	ng/ul	0.00
System Monitoring Compounds						
3) 1,4-Dioxane-d8	3.369	96	40195	6.404	ng/uL	0.00
4) Pyridine-d5	3.781	84	567409	33.100	ng/ul	0.00
7) Phenol-d5	7.116	99	641096	33.792	ng/ul	0.01
9) Bis-(2-Chloroethyl)eth...	7.292	67	399849	32.546	ng/ul	0.01
11) 2-Chlorophenol-d4	7.475	132	505780	35.397	ng/ul	0.00
15) 4-Methylphenol-d8	8.669	113	479955	33.435	ng/ul	0.01
21) Nitrobenzene-d5	9.122	128	242003	34.898	ng/ul	0.01
24) 2-Nitrophenol-d4	9.839	143	263319	37.219	ng/ul	0.00
28) 2,4-Dichlorophenol-d3	10.375	165	467339	37.447	ng/ul	0.00
31) 4-Chloroaniline-d4	10.904	131	636247	30.355	ng/ul	0.01
46) Dimethylphthalate-d6	14.015	166	1292069	33.945	ng/ul	0.01
49) Acenaphthylene-d8	14.286	160	1542019	35.211	ng/ul	0.01
54) 4-Nitrophenol-d4	14.798	143	261678	34.548	ng/ul	0.01
60) Fluorene-d10	15.586	176	1120909	34.792	ng/ul	0.01
65) 4,6-Dinitro-2-methylph...	15.709	200	213091	33.641	ng/ul	0.00
73) Anthracene-d10	17.439	188	1696543	34.854	ng/ul	0.00
81) Pyrene-d10	19.733	212	1921687	36.792	ng/ul	0.00
92) Benzo(a)pyrene-d12	23.797	264	1742249	36.714	ng/ul	0.00
Target Compounds						
2) 1,4-Dioxane	3.399	88	124569	18.828	ng/uL	94
5) Pyridine	3.798	79	869521	48.485	ng/ul	97
6) Benzaldehyde	7.092	77	444015	53.916	ng/ul	99
8) Phenol	7.139	94	995614	50.486	ng/ul	98
10) Bis(2-Chloroethyl)ether	7.386	93	804772	48.755	ng/ul	98
12) 2-Chlorophenol	7.510	128	782750	52.950	ng/ul	97
13) 2-Methylphenol	8.398	108	742593	51.112	ng/ul	98
14) 2,2'-oxybis(1-Chloropr...	8.481	45	1088563	48.234	ng/ul	98
16) Acetophenone	8.786	105	1160695	50.610	ng/ul	99
17) N-Nitroso-di-n-propyla...	8.775	70	598102	52.060	ng/ul	98
18) 4-Methylphenol	8.733	108	786371	50.810	ng/ul	98
19) Hexachloroethane	9.022	117	323714	51.619	ng/ul	95
22) Nitrobenzene	9.163	77	863445	51.486	ng/ul	99
23) Isophorone	9.692	82	1681878	51.746	ng/ul	99
25) 2-Nitrophenol	9.875	139	429556	54.744	ng/ul	96
26) 2,4-Dimethylphenol	9.933	107	653969	43.648	ng/ul	99
27) Bis(2-Chloroethoxy)met...	10.186	93	1063630	50.338	ng/ul	100
29) 2,4-Dichlorophenol	10.404	162	674186	53.377	ng/ul	98
30) Naphthalene	10.804	128	2440885	50.322	ng/ul	100
32) 4-Chloroaniline	10.927	127	765907	37.499	ng/ul	99
33) Hexachlorobutadiene	11.080	225	389076	51.130	ng/ul	99
34) Caprolactam	11.722	113	233436	53.466	ng/ul	96
35) 4-Chloro-3-methylphenol	12.051	107	746377	55.466	ng/ul	96
36) 2-Methylnaphthalene	12.416	142	1593325	51.571	ng/ul	99

Data Path : Z:\svoasrv\HPCHEM1\BNA_M\Data\BM022824\
 Data File : BM044419.D
 Acq On : 29 Feb 2024 00:13
 Operator : MA/JU
 Sample : PB159335BS
 Misc :
 ALS Vial : 17 Sample Multiplier: 1

Instrument :
 BNA_M
 ClientSampleId :
 SLCS335

Quant Time: Feb 29 00:59:35 2024
 Quant Method : Z:\svoasrv\HPCHEM1\BNA_M\Methods\SFAM-EPA-BM022324.MA.M
 Quant Title : SVOA CALIBRATION
 QLast Update : Tue Feb 27 23:05:48 2024
 Response via : Initial Calibration

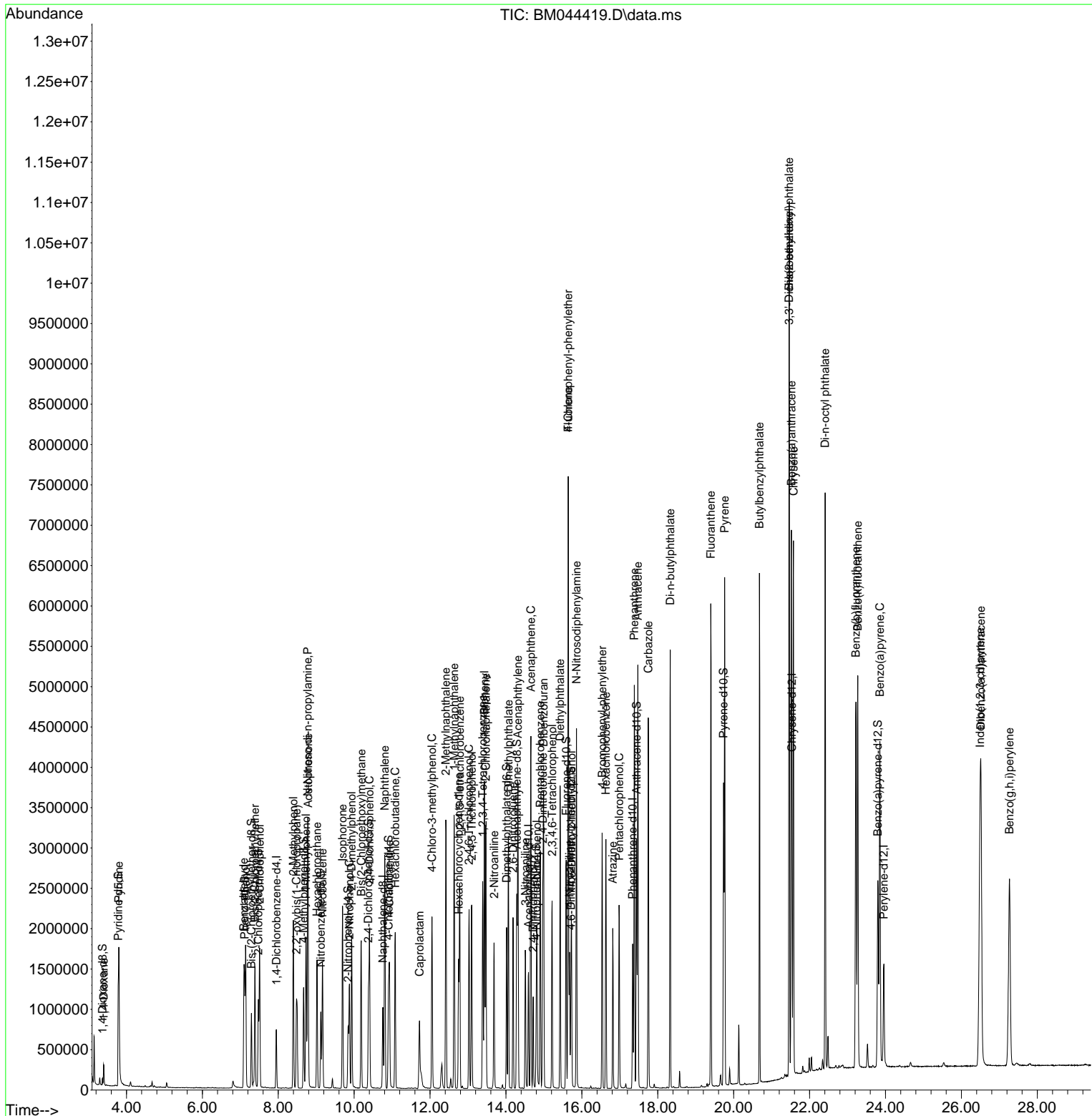
Compound	R.T.	QIon	Response	Conc	Units	Dev(Min)
37) 1-Methylnaphthalene	12.633	142	1575744	51.593	ng/ul	100
39) 1,2,4,5-Tetrachloroben...	12.780	216	735874	50.367	ng/ul	100
40) Hexachlorocyclopentadiene	12.751	237	414404	42.158	ng/ul	99
41) 2,4,6-Trichlorophenol	13.027	196	487110	52.306	ng/ul	98
42) 2,4,5-Trichlorophenol	13.098	196	541349	53.773	ng/ul	99
43) 1,1'-Biphenyl	13.433	154	2005951	49.924	ng/ul	98
44) 2-Chloronaphthalene	13.468	162	1585241	50.388	ng/ul	99
45) 2-Nitroaniline	13.686	65	493951	56.708	ng/ul	96
47) Dimethylphthalate	14.063	163	1971208	50.670	ng/ul	100
48) 2,6-Dinitrotoluene	14.186	165	406782	55.912	ng/ul	97
50) Acenaphthylene	14.315	152	2656832	51.218	ng/ul	99
51) 3-Nitroaniline	14.510	138	436641	56.889	ng/ul	99
52) Acenaphthene	14.657	153	1731222	50.554	ng/ul	100
53) 2,4-Dinitrophenol	14.715	184	213425	47.275	ng/ul	97
55) 4-Nitrophenol	14.815	109	269576	51.809	ng/ul	96
56) Dibenzofuran	14.992	168	2298901	50.008	ng/ul	100
57) 2,4-Dinitrotoluene	14.968	165	591315	56.574	ng/ul	98
58) 2,3,4,6-Tetrachlorophenol	15.215	232	413221	51.003	ng/ul	98
59) Diethylphthalate	15.427	149	2069315	51.675	ng/ul	100
61) Fluorene	15.639	166	1877378	50.846	ng/ul	100
62) 4-Chlorophenyl-phenyle...	15.639	204	884398	50.825	ng/ul	97
63) 4-Nitroaniline	15.674	138	475199	64.012	ng/ul	100
66) 4,6-Dinitro-2-methylph...	15.727	198	331791	47.884	ng/ul#	97
67) N-Nitrosodiphenylamine	15.857	169	1599363	51.699	ng/ul	100
68) 4-Bromophenyl-phenylether	16.533	248	540178	53.257	ng/ul	98
69) Hexachlorobenzene	16.633	284	598558	51.560	ng/ul	99
70) Atrazine	16.815	200	305765	30.173	ng/ul	100
71) Pentachlorophenol	16.980	266	361650	47.272	ng/ul	99
72) Phenanthrene	17.380	178	2975662	50.812	ng/ul	99
74) Anthracene	17.474	178	3023006	51.270	ng/ul	99
75) 1,2,3,4-Tetrachloroben...	13.386	216	741167	51.866	ng/uL	99
76) Pentachlorobenzene	14.904	250	695768	51.003	ng/uL	97
77) Carbazole	17.751	167	2852864	51.456	ng/ul	100
78) Di-n-butylphthalate	18.327	149	3867260	55.091	ng/ul	100
80) Fluoranthene	19.397	202	3395582	54.206	ng/ul	100
82) Pyrene	19.762	202	3526415	53.679	ng/ul	100
83) Butylbenzylphthalate	20.680	149	1782457	60.408	ng/ul	99
84) 3,3'-Dichlorobenzidine	21.456	252	1025099	52.788	ng/ul	99
85) Benzo(a)anthracene	21.521	228	3390345	52.361	ng/ul	99
86) Bis(2-ethylhexyl)phtha...	21.462	149	2698217	59.727	ng/ul	99
87) Chrysene	21.574	228	3183363	52.303	ng/ul	100
89) Di-n-octyl phthalate	22.409	149	4759849	59.988	ng/ul	100
90) Benzo(b)fluoranthene	23.221	252	3340852	56.271	ng/ul	99
91) Benzo(k)fluoranthene	23.268	252	3238270	53.105	ng/ul	99
93) Benzo(a)pyrene	23.850	252	3087618	53.940	ng/ul	99
94) Indeno(1,2,3-cd)pyrene	26.491	276	3711645	53.619	ng/ul	99
95) Dibenzo(a,h)anthracene	26.515	278	3104640	53.670	ng/ul	98
96) Benzo(g,h,i)perylene	27.268	276	2973987	53.112	ng/ul	98

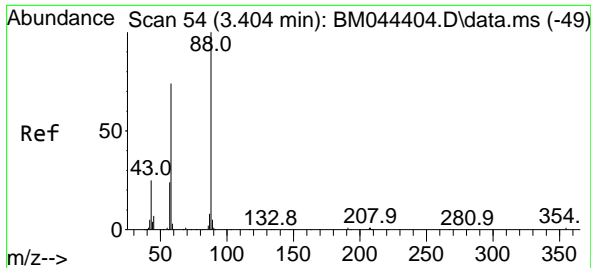
(#) = qualifier out of range (m) = manual integration (+) = signals summed

Data Path : Z:\svoasrv\HPCHEM1\BNA_M\Data\BM022824\
 Data File : BM044419.D
 Acq On : 29 Feb 2024 00:13
 Operator : MA/JU
 Sample : PB159335BS
 Misc :
 ALS Vial : 17 Sample Multiplier: 1

Instrument :
 BNA_M
 ClientSampleId :
 SLCS335

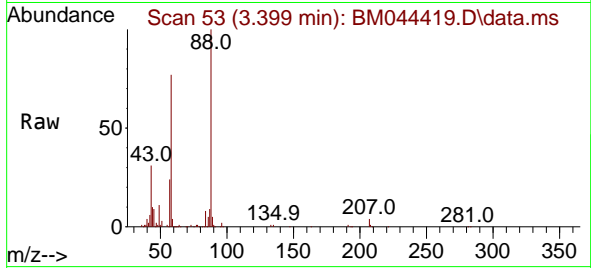
Quant Time: Feb 29 00:59:35 2024
 Quant Method : Z:\svoasrv\HPCHEM1\BNA_M\Methods\SFAM-EPA-BM022324.MA.M
 Quant Title : SVOA CALIBRATION
 QLast Update : Tue Feb 27 23:05:48 2024
 Response via : Initial Calibration



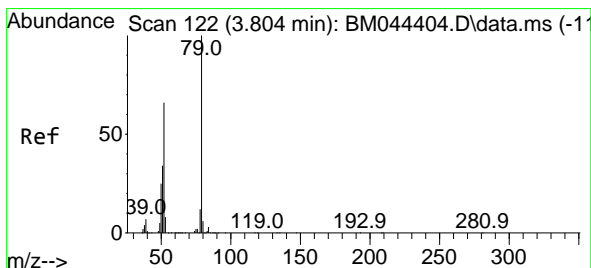
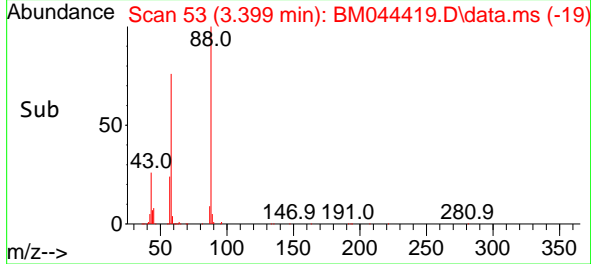
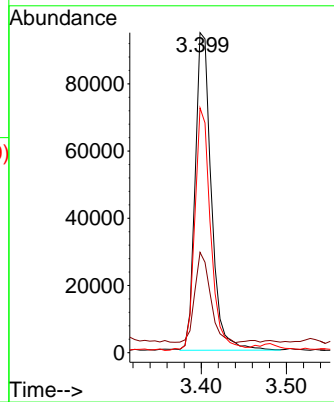


#2
 1,4-Dioxane
 Concen: 18.828 ng/uL
 RT: 3.399 min Scan# 51
 Delta R.T. 0.000 min
 Lab File: BM044419.D
 Acq: 29 Feb 2024 00:13

Instrument :
 BNA_M
 ClientSampleId :
 SLCS335

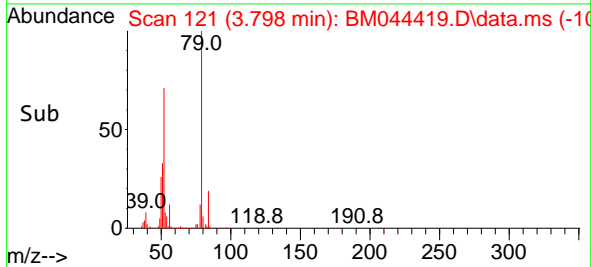
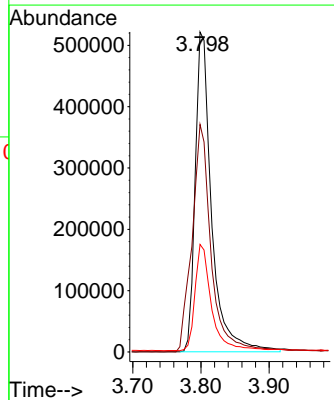
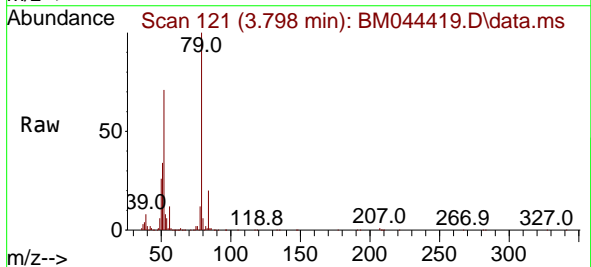


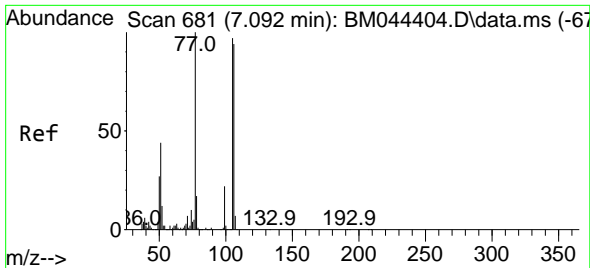
Tgt Ion: 88 Resp: 124569
 Ion Ratio Lower Upper
 88 100
 43 31.3 21.2 31.8
 58 76.5 58.3 87.5



#5
 Pyridine
 Concen: 48.485 ng/uL
 RT: 3.798 min Scan# 121
 Delta R.T. -0.000 min
 Lab File: BM044419.D
 Acq: 29 Feb 2024 00:13

Tgt Ion: 79 Resp: 869521
 Ion Ratio Lower Upper
 79 100
 52 71.1 58.9 88.3
 51 33.6 27.8 41.8

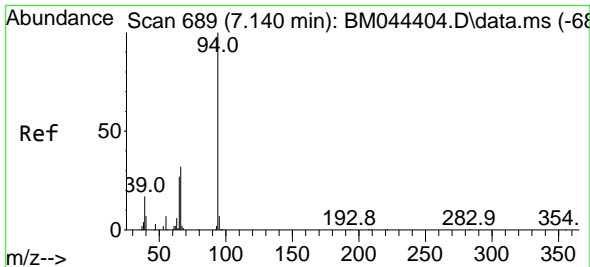
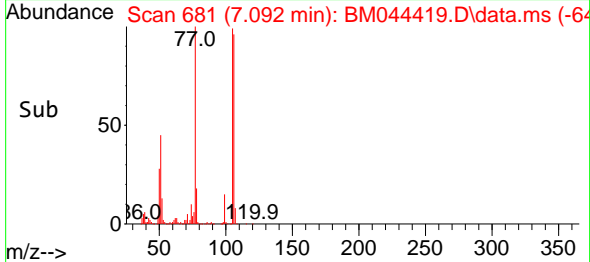
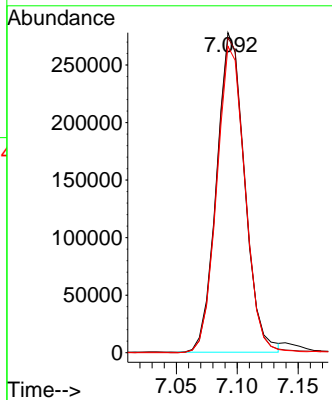
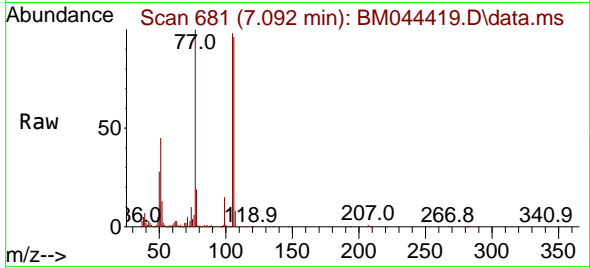




#6
Benzaldehyde
Concen: 53.916 ng/u1
RT: 7.092 min Scan# 681
Delta R.T. 0.006 min
Lab File: BM044419.D
Acq: 29 Feb 2024 00:13

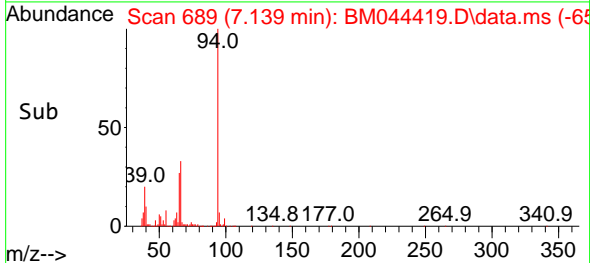
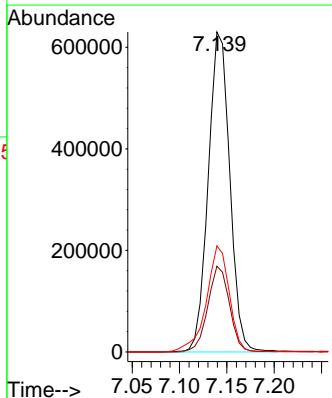
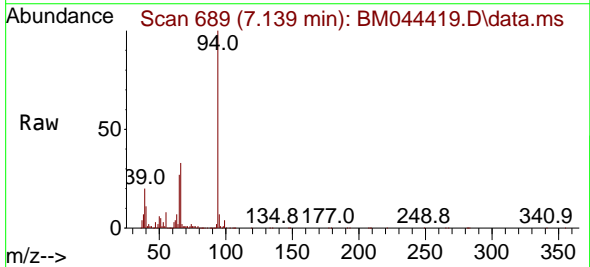
Instrument :
BNA_M
ClientSampleId :
SLCS335

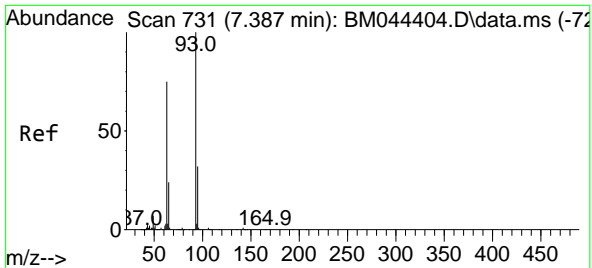
Tgt Ion: 77 Resp: 444015
Ion Ratio Lower Upper
77 100
105 98.4 79.0 118.6
106 95.8 77.4 116.2



#8
Phenol
Concen: 50.486 ng/u1
RT: 7.139 min Scan# 689
Delta R.T. 0.006 min
Lab File: BM044419.D
Acq: 29 Feb 2024 00:13

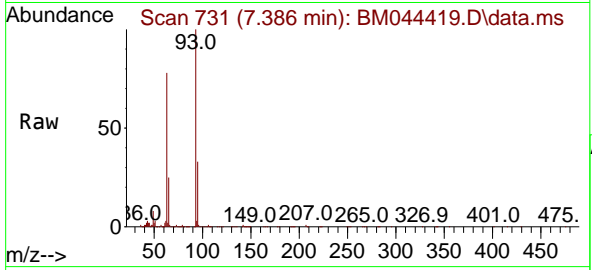
Tgt Ion: 94 Resp: 995614
Ion Ratio Lower Upper
94 100
65 26.8 20.6 31.0
66 33.2 25.4 38.0





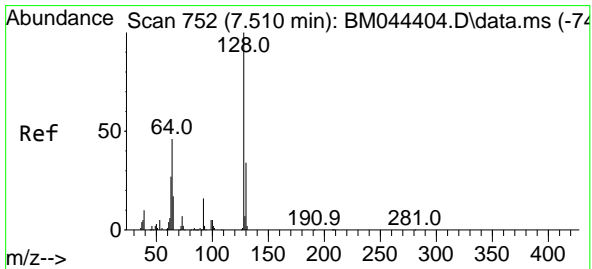
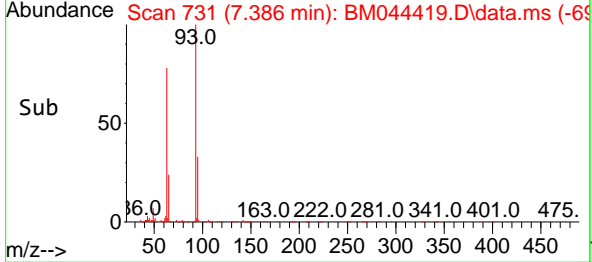
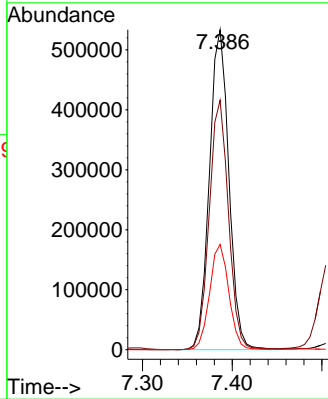
#10
 Bis(2-Chloroethyl)ether
 Concen: 48.755 ng/ul
 RT: 7.386 min Scan# 731
 Delta R.T. 0.012 min
 Lab File: BM044419.D
 Acq: 29 Feb 2024 00:13

Instrument :
 BNA_M
 ClientSampleId :
 SLCS335



Tgt Ion: 93 Resp: 804772

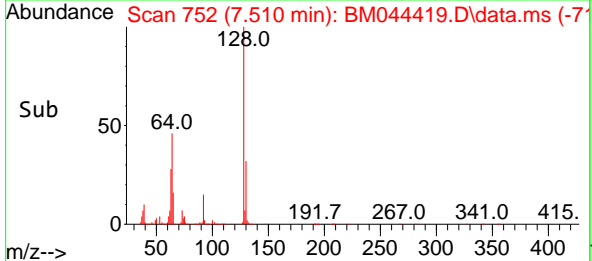
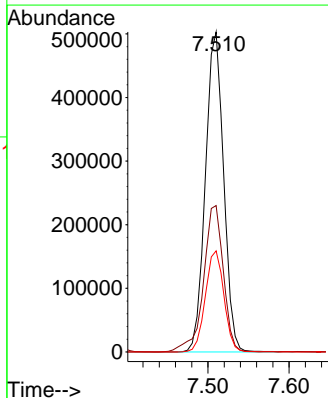
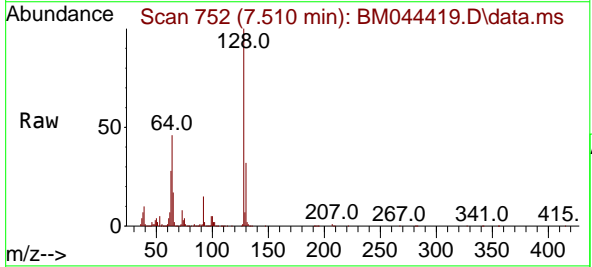
Ion	Ratio	Lower	Upper
93	100		
63	77.9	61.0	91.6
95	32.9	25.1	37.7

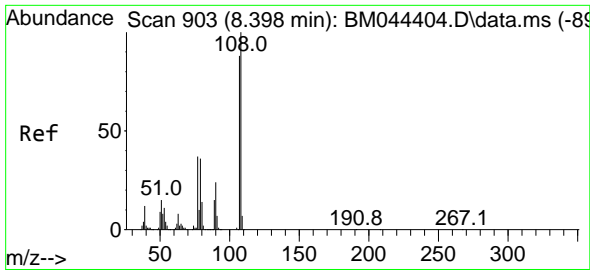


#12
 2-Chlorophenol
 Concen: 52.950 ng/ul
 RT: 7.510 min Scan# 752
 Delta R.T. 0.012 min
 Lab File: BM044419.D
 Acq: 29 Feb 2024 00:13

Tgt Ion: 128 Resp: 782750

Ion	Ratio	Lower	Upper
128	100		
64	45.8	39.0	58.6
130	31.6	25.4	38.0

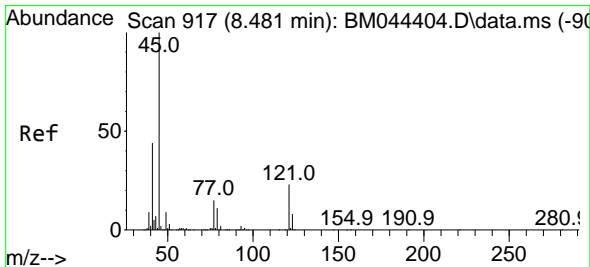
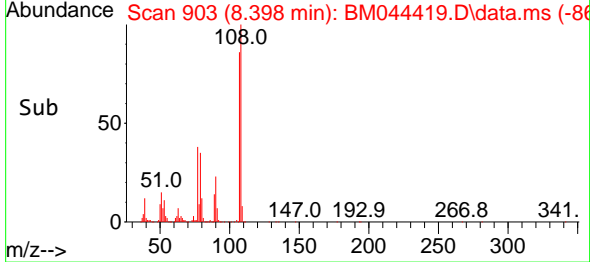
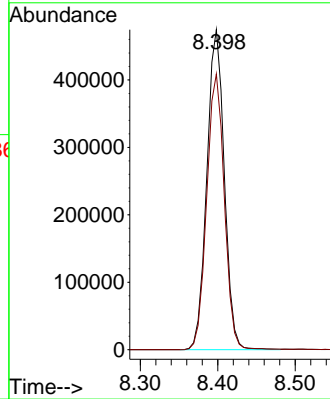
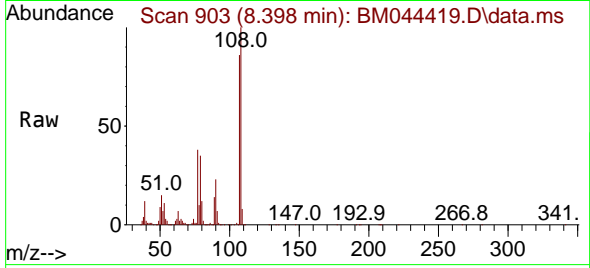




#13
 2-Methylphenol
 Concen: 51.112 ng/ul
 RT: 8.398 min Scan# 903
 Delta R.T. 0.012 min
 Lab File: BM044419.D
 Acq: 29 Feb 2024 00:13

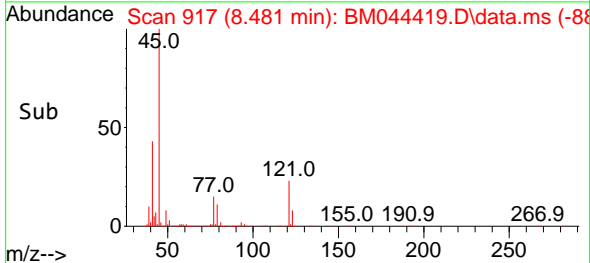
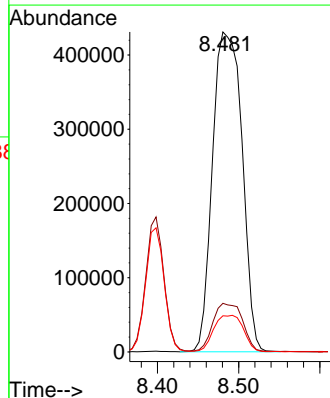
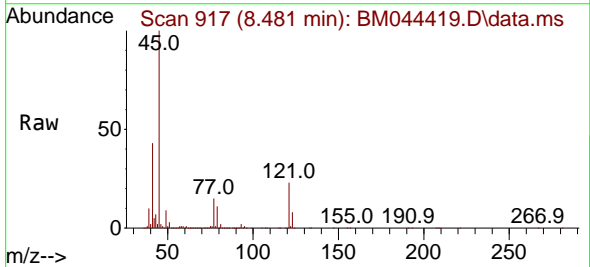
Instrument :
 BNA_M
 ClientSampleId :
 SLCS335

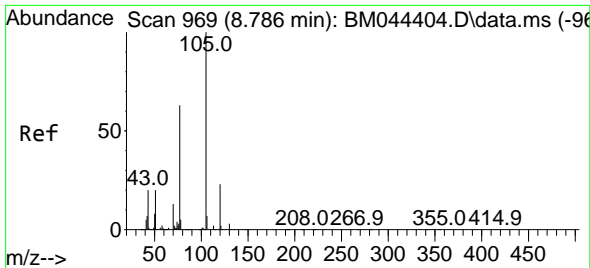
Tgt Ion:108 Resp: 742593
 Ion Ratio Lower Upper
 108 100
 107 86.1 70.6 105.8



#14
 2,2'-oxybis(1-Chloropropane)
 Concen: 48.234 ng/ul
 RT: 8.481 min Scan# 917
 Delta R.T. 0.006 min
 Lab File: BM044419.D
 Acq: 29 Feb 2024 00:13

Tgt Ion: 45 Resp: 1088563
 Ion Ratio Lower Upper
 45 100
 77 15.2 11.3 16.9
 79 11.3 8.5 12.7



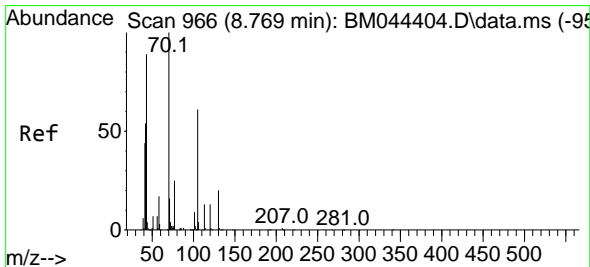
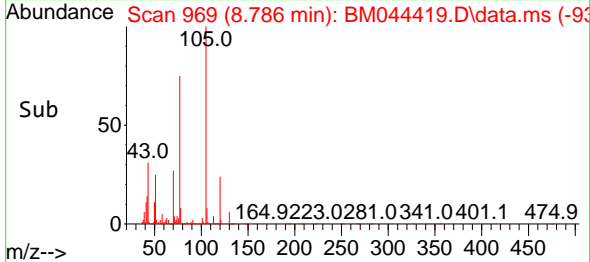
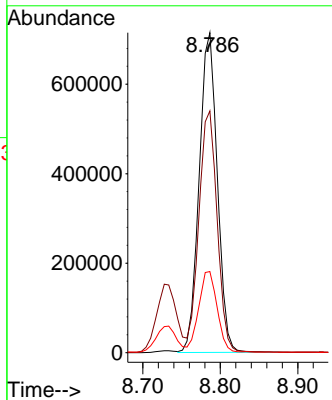
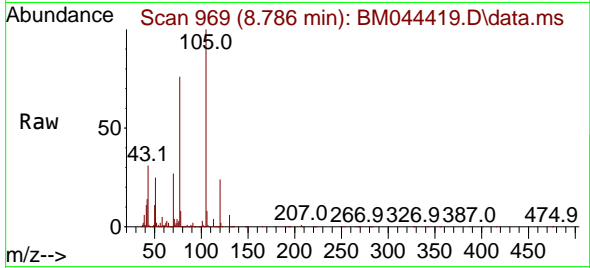


#16
 Acetophenone
 Concen: 50.610 ng/ul
 RT: 8.786 min Scan# 969
 Delta R.T. 0.012 min
 Lab File: BM044419.D
 Acq: 29 Feb 2024 00:13

Instrument :
 BNA_M
 ClientSampleId :
 SLCS335

Tgt Ion: 105 Resp: 1160695

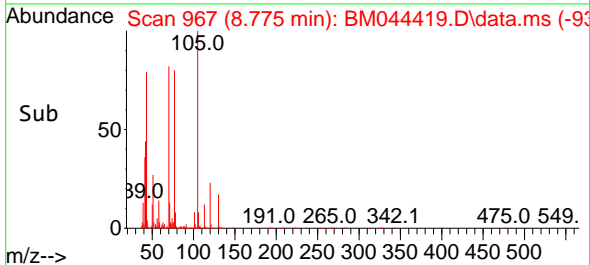
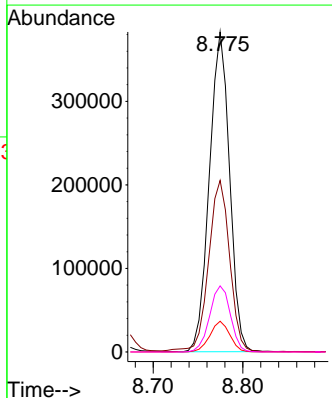
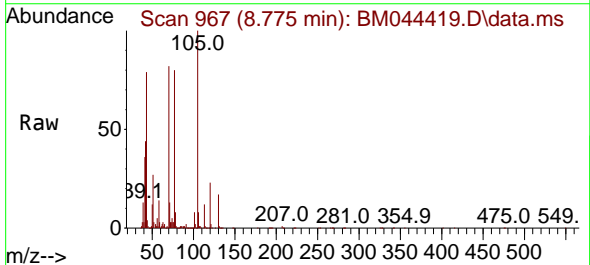
Ion	Ratio	Lower	Upper
105	100		
77	75.6	61.2	91.8
51	25.4	21.1	31.7

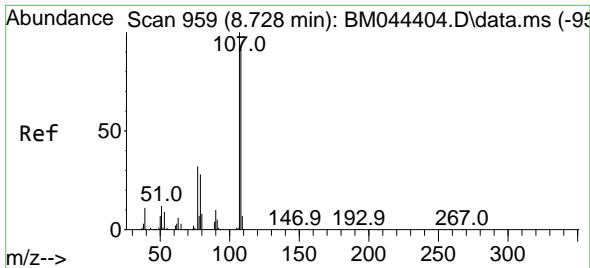


#17
 N-Nitroso-di-n-propylamine
 Concen: 52.060 ng/ul
 RT: 8.775 min Scan# 967
 Delta R.T. 0.012 min
 Lab File: BM044419.D
 Acq: 29 Feb 2024 00:13

Tgt Ion: 70 Resp: 598102

Ion	Ratio	Lower	Upper
70	100		
42	53.6	44.4	66.6
101	9.6	7.5	11.3
130	20.6	17.0	25.4

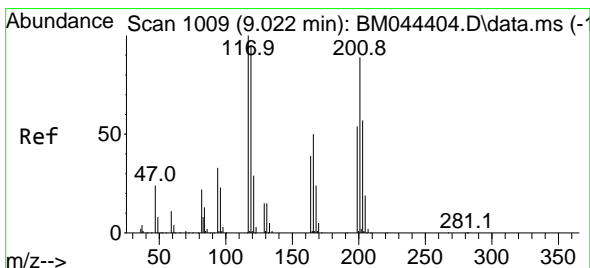
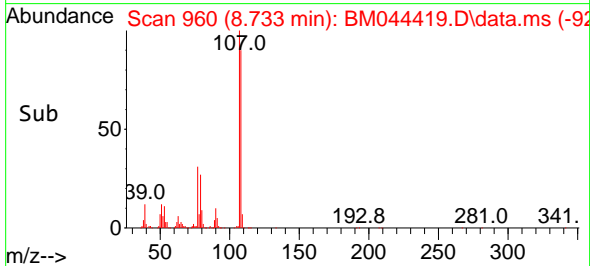
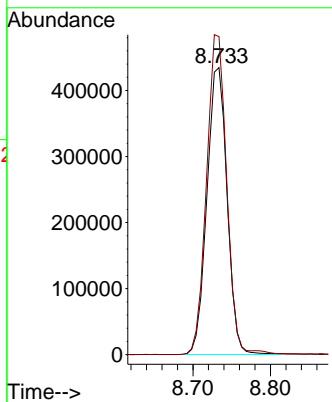
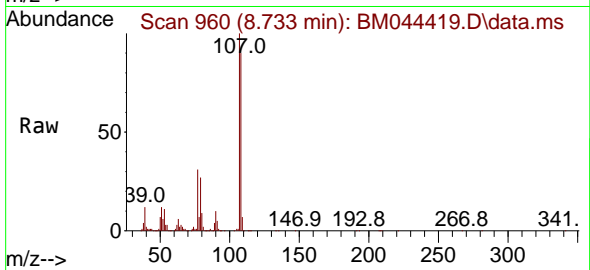




#18
 4-Methylphenol
 Concen: 50.810 ng/ul
 RT: 8.733 min Scan# 909
 Delta R.T. 0.012 min
 Lab File: BM044419.D
 Acq: 29 Feb 2024 00:13

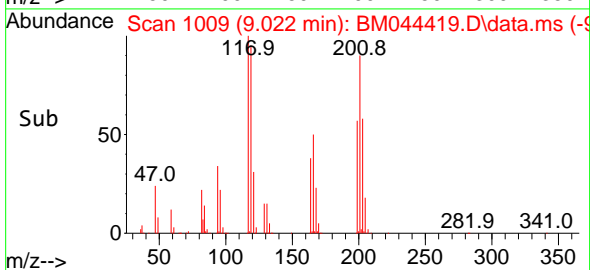
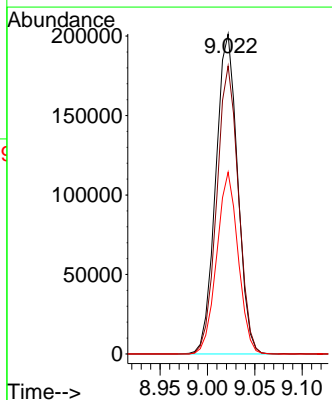
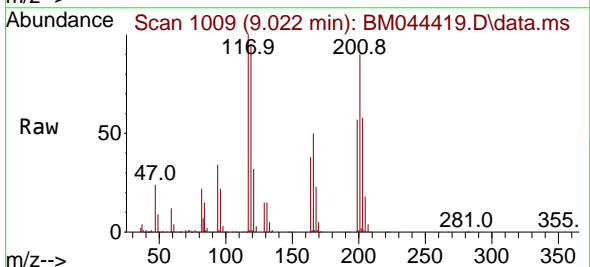
Instrument :
 BNA_M
 ClientSampleId :
 SLCS335

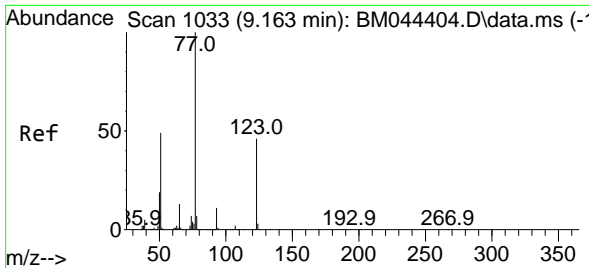
Tgt Ion:108 Resp: 786371
 Ion Ratio Lower Upper
 108 100
 107 110.8 86.8 130.2



#19
 Hexachloroethane
 Concen: 51.619 ng/ul
 RT: 9.022 min Scan# 1009
 Delta R.T. 0.012 min
 Lab File: BM044419.D
 Acq: 29 Feb 2024 00:13

Tgt Ion:117 Resp: 323714
 Ion Ratio Lower Upper
 117 100
 201 90.0 69.8 104.6
 199 56.8 40.8 61.2

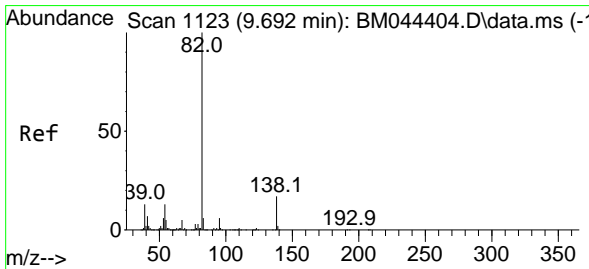
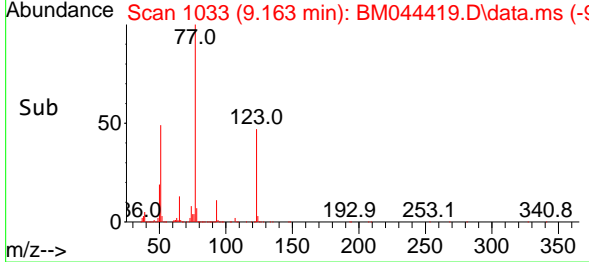
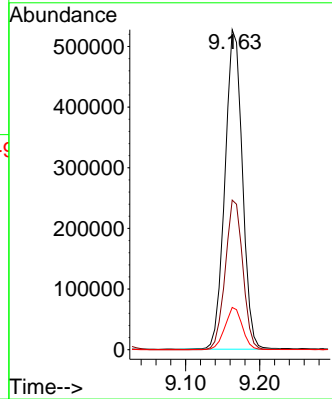
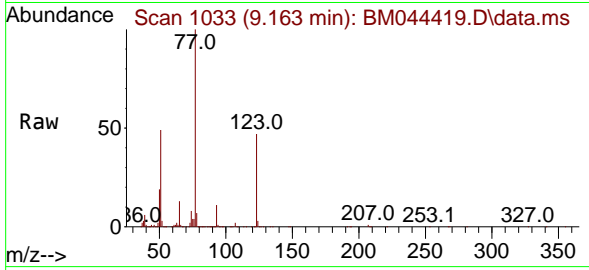




#22
 Nitrobenzene
 Concen: 51.486 ng/uI
 RT: 9.163 min Scan# 1033
 Delta R.T. 0.006 min
 Lab File: BM044419.D
 Acq: 29 Feb 2024 00:13

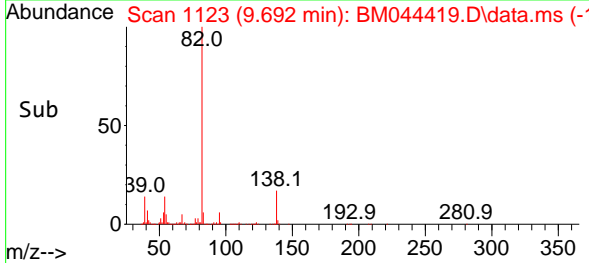
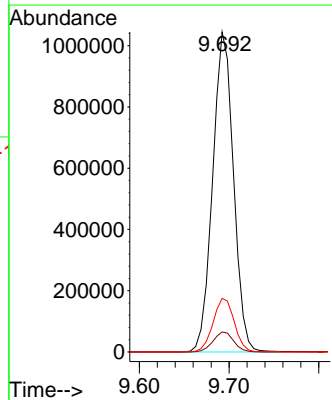
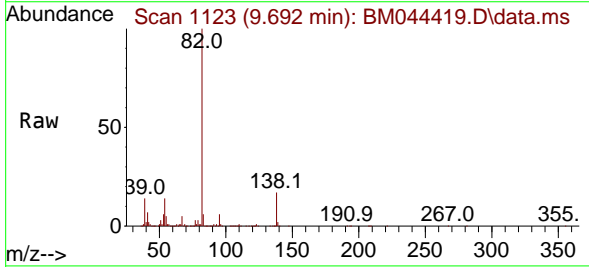
Instrument : BNA_M
 ClientSampleId : SLCS335

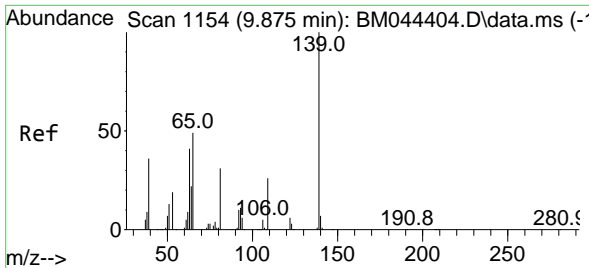
Tgt Ion	Resp	Lower	Upper
77	100		
123	46.8	36.9	55.3
65	13.2	10.2	15.2



#23
 Isophorone
 Concen: 51.746 ng/uI
 RT: 9.692 min Scan# 1123
 Delta R.T. 0.012 min
 Lab File: BM044419.D
 Acq: 29 Feb 2024 00:13

Tgt Ion	Resp	Lower	Upper
82	100		
95	6.3	4.6	7.0
138	16.7	13.5	20.3



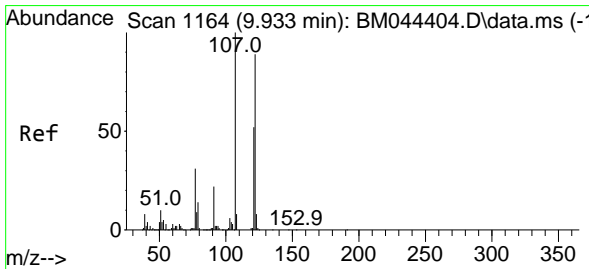
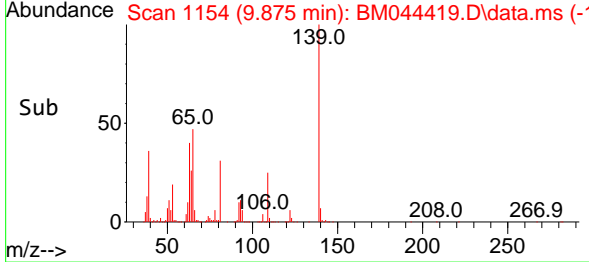
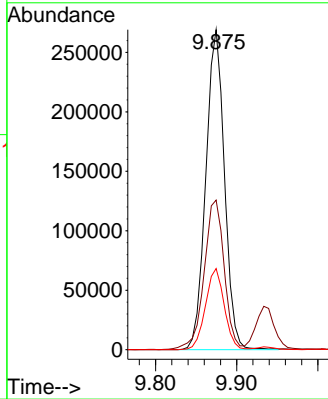
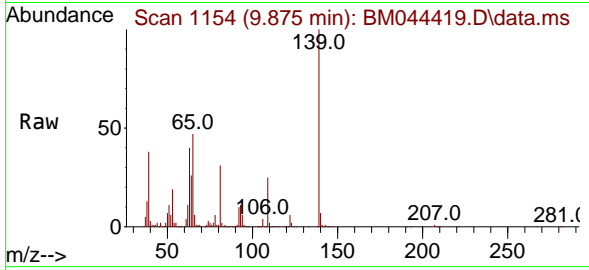


#25
 2-Nitrophenol
 Concen: 54.744 ng/ul
 RT: 9.875 min Scan# 1154
 Delta R.T. 0.012 min
 Lab File: BM044419.D
 Acq: 29 Feb 2024 00:13

Instrument :
 BNA_M
 ClientSampleId :
 SLCS335

Tgt Ion:139 Resp: 429556

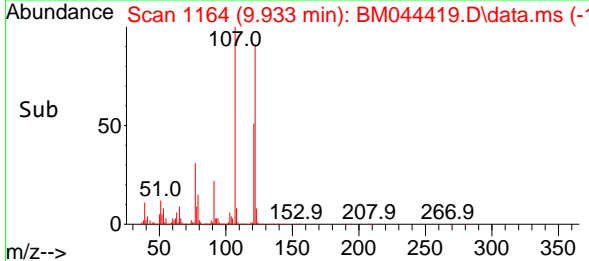
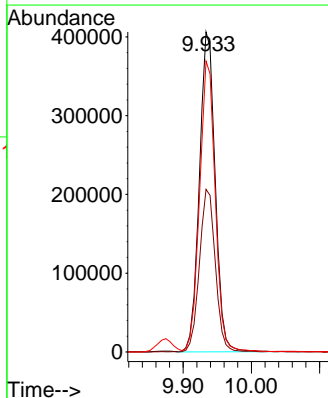
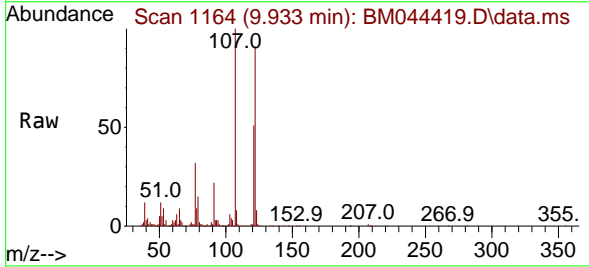
Ion	Ratio	Lower	Upper
139	100		
65	46.8	41.0	61.4
109	25.3	20.5	30.7

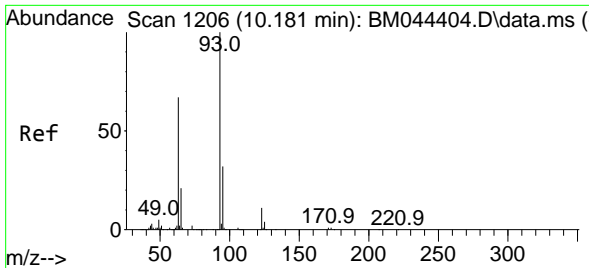


#26
 2,4-Dimethylphenol
 Concen: 43.648 ng/ul
 RT: 9.933 min Scan# 1164
 Delta R.T. 0.006 min
 Lab File: BM044419.D
 Acq: 29 Feb 2024 00:13

Tgt Ion:107 Resp: 653969

Ion	Ratio	Lower	Upper
107	100		
121	50.8	41.1	61.7
122	90.9	72.3	108.5



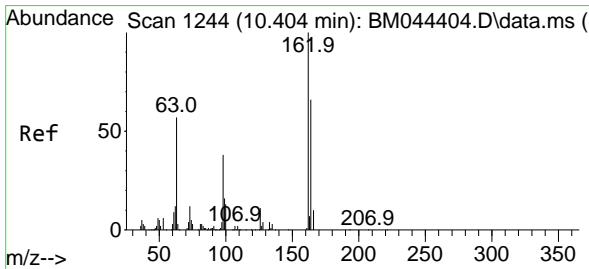
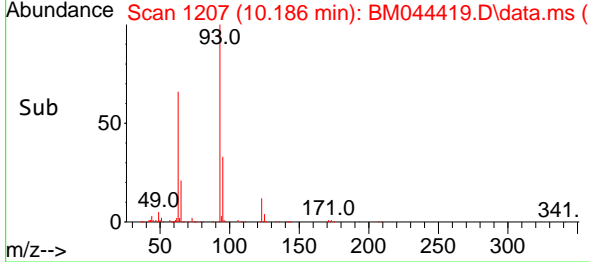
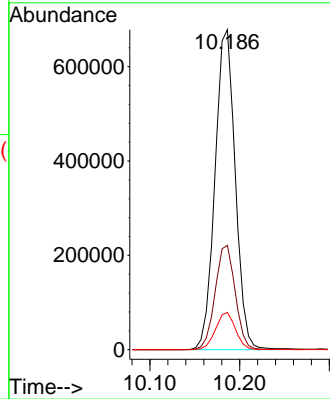
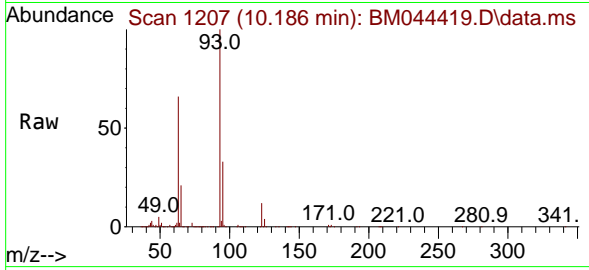


#27
 Bis(2-Chloroethoxy)methane
 Concen: 50.338 ng/ul
 RT: 10.186 min Scan# 11
 Delta R.T. 0.012 min
 Lab File: BM044419.D
 Acq: 29 Feb 2024 00:13

Instrument :
 BNA_M
 ClientSampleId :
 SLCS335

Tgt Ion: 93 Resp: 1063630

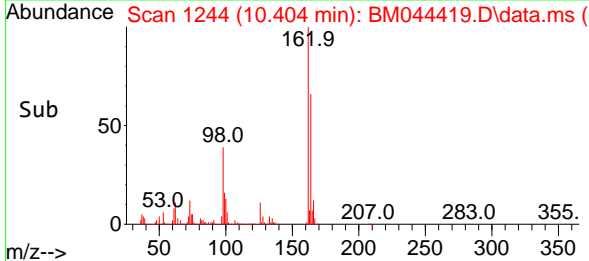
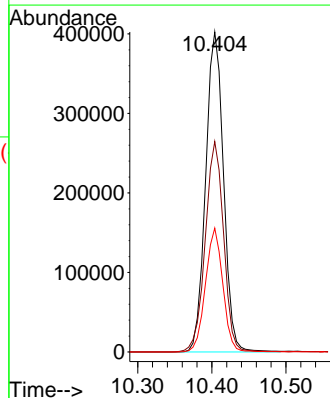
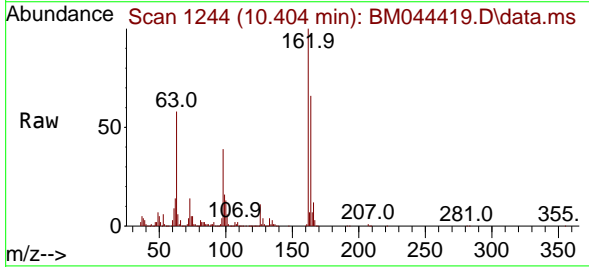
Ion	Ratio	Lower	Upper
93	100		
95	32.6	26.0	39.0
123	11.7	9.0	13.6

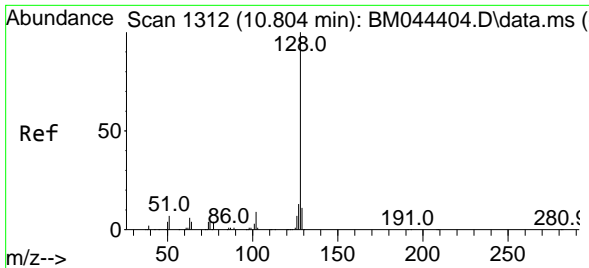


#29
 2,4-Dichlorophenol
 Concen: 53.377 ng/ul
 RT: 10.404 min Scan# 1244
 Delta R.T. 0.012 min
 Lab File: BM044419.D
 Acq: 29 Feb 2024 00:13

Tgt Ion: 162 Resp: 674186

Ion	Ratio	Lower	Upper
162	100		
164	65.8	51.8	77.8
98	38.7	29.6	44.4

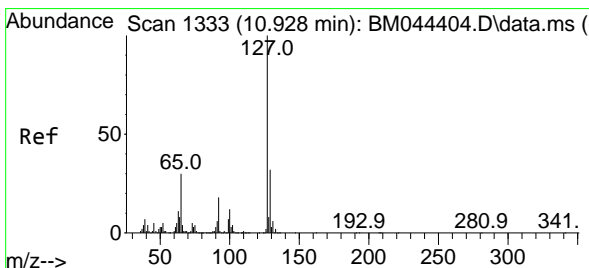
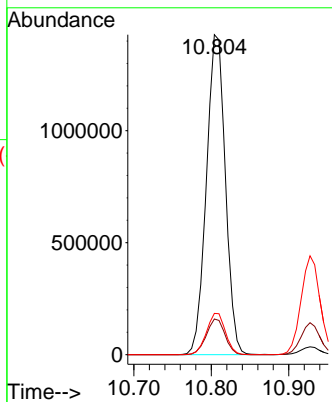
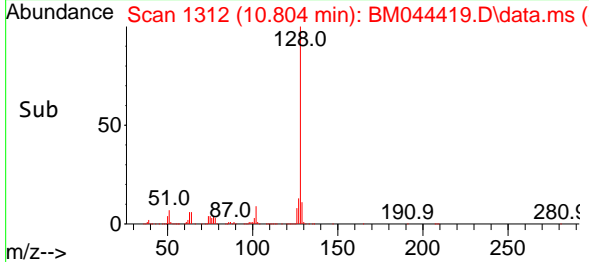
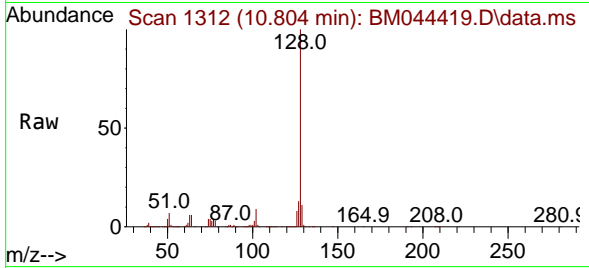




#30
 Naphthalene
 Concen: 50.322 ng/u1
 RT: 10.804 min Scan# 11
 Delta R.T. 0.006 min
 Lab File: BM044419.D
 Acq: 29 Feb 2024 00:13

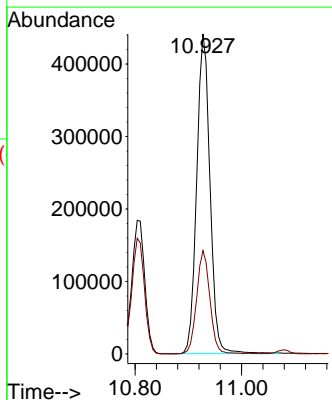
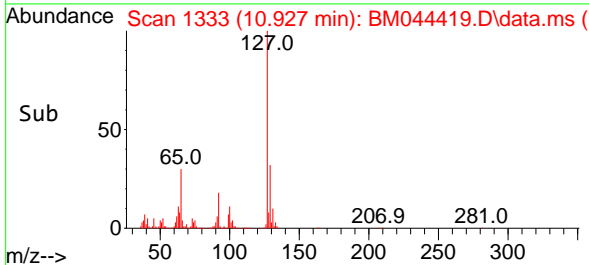
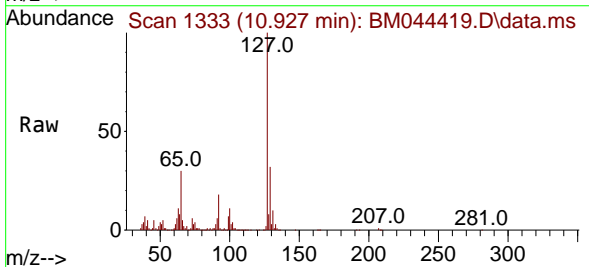
Instrument :
 BNA_M
 ClientSampleId :
 SLCS335

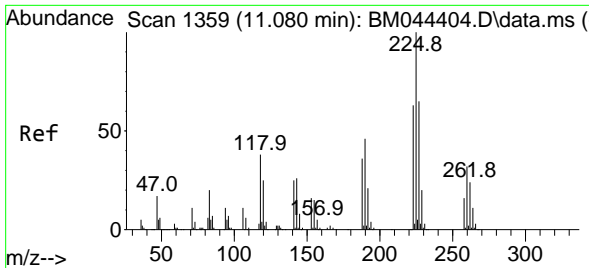
Tgt Ion:128 Resp: 2440885
 Ion Ratio Lower Upper
 128 100
 129 11.2 8.8 13.2
 127 12.9 10.2 15.2



#32
 4-Chloroaniline
 Concen: 37.499 ng/u1
 RT: 10.927 min Scan# 1333
 Delta R.T. 0.006 min
 Lab File: BM044419.D
 Acq: 29 Feb 2024 00:13

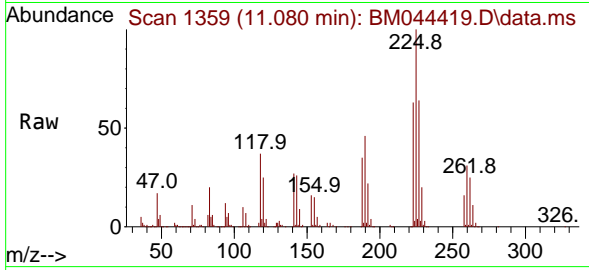
Tgt Ion:127 Resp: 765907
 Ion Ratio Lower Upper
 127 100
 129 32.3 25.3 37.9



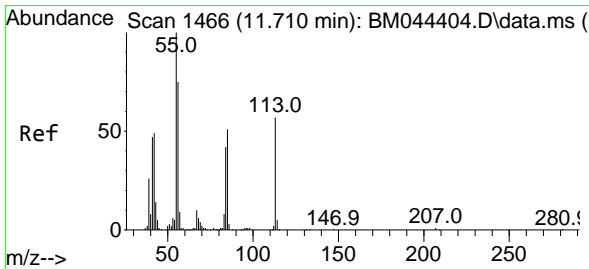
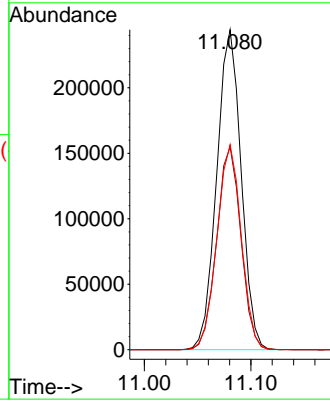
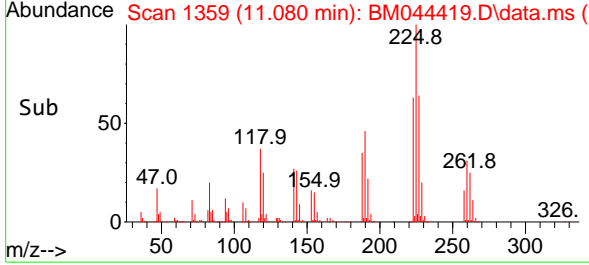


#33
 Hexachlorobutadiene
 Concen: 51.130 ng/u1
 RT: 11.080 min Scan# 11
 Delta R.T. 0.012 min
 Lab File: BM044419.D
 Acq: 29 Feb 2024 00:13

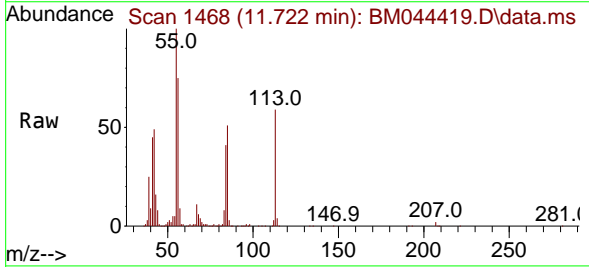
Instrument :
 BNA_M
 ClientSampleId :
 SLCS335



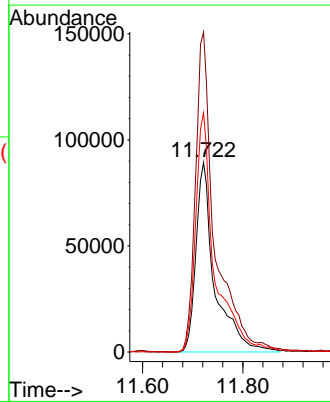
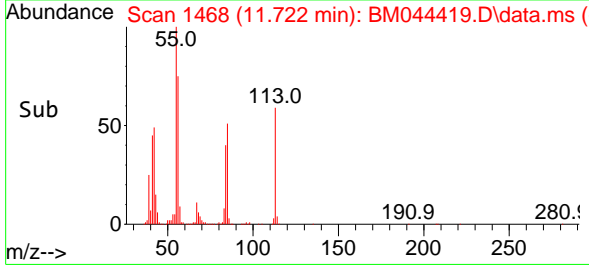
Tgt Ion:225 Resp: 389076
 Ion Ratio Lower Upper
 225 100
 223 63.4 49.7 74.5
 227 64.1 52.2 78.2

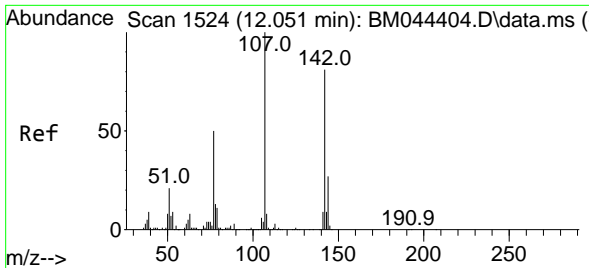


#34
 Caprolactam
 Concen: 53.466 ng/u1
 RT: 11.722 min Scan# 1468
 Delta R.T. 0.024 min
 Lab File: BM044419.D
 Acq: 29 Feb 2024 00:13



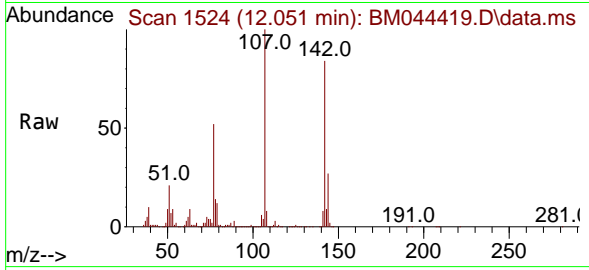
Tgt Ion:113 Resp: 233436
 Ion Ratio Lower Upper
 113 100
 55 168.7 140.7 211.1
 56 126.1 102.4 153.6





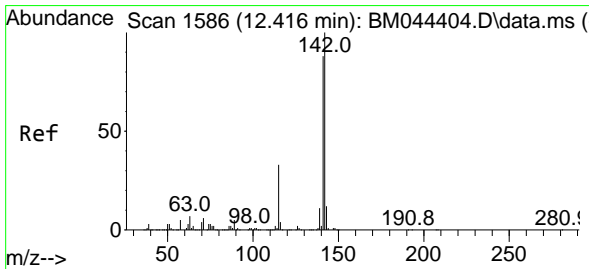
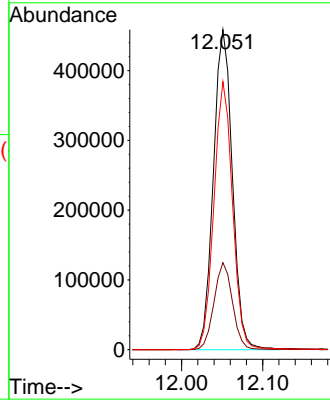
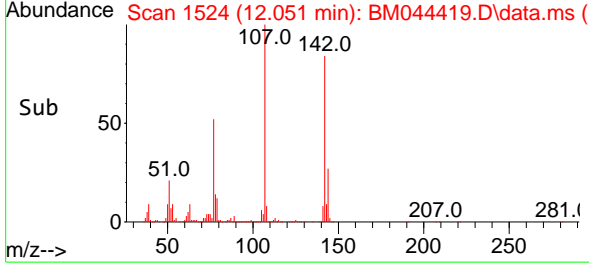
#35
 4-Chloro-3-methylphenol
 Concen: 55.466 ng/ul
 RT: 12.051 min Scan# 1524
 Delta R.T. 0.012 min
 Lab File: BM044419.D
 Acq: 29 Feb 2024 00:13

Instrument : BNA_M
 ClientSampleId : SLCS335

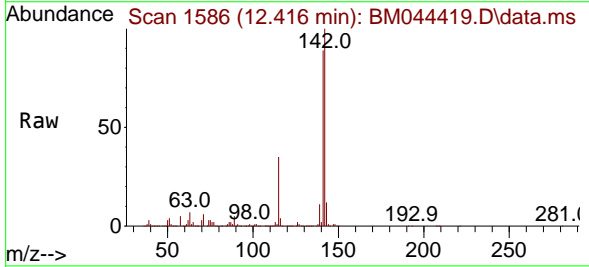


Tgt Ion:107 Resp: 746377

Ion	Ratio	Lower	Upper
107	100		
144	27.2	20.6	30.8
142	83.8	64.3	96.5

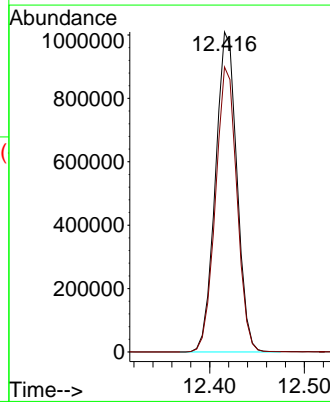
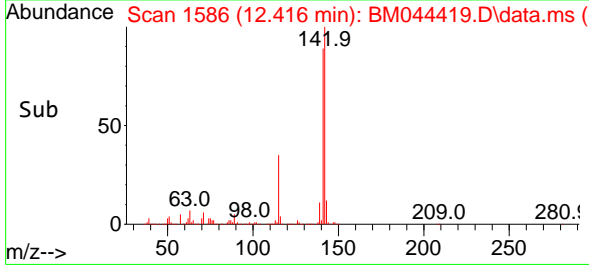


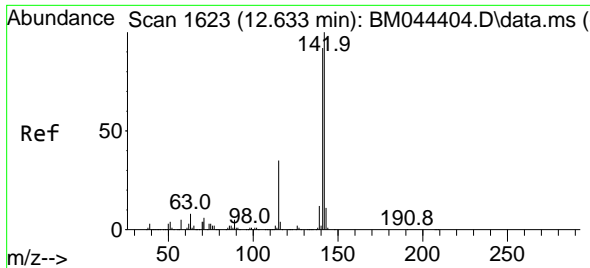
#36
 2-Methylnaphthalene
 Concen: 51.571 ng/ul
 RT: 12.416 min Scan# 1586
 Delta R.T. 0.006 min
 Lab File: BM044419.D
 Acq: 29 Feb 2024 00:13



Tgt Ion:142 Resp: 1593325

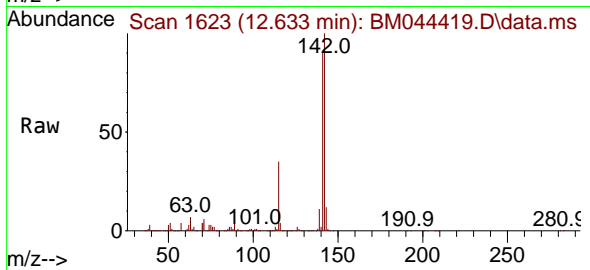
Ion	Ratio	Lower	Upper
142	100		
141	89.1	70.5	105.7



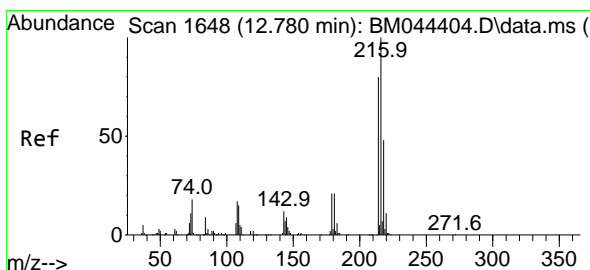
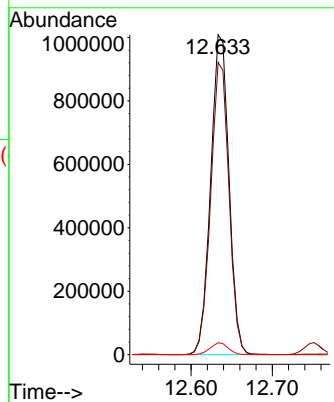
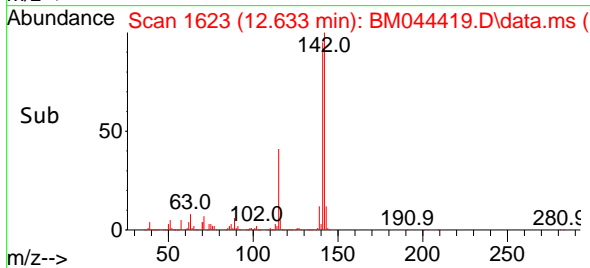


#37
 1-Methylnaphthalene
 Concen: 51.593 ng/ul
 RT: 12.633 min Scan# 1623
 Delta R.T. 0.006 min
 Lab File: BM044419.D
 Acq: 29 Feb 2024 00:13

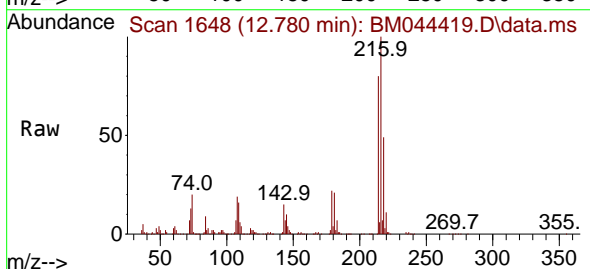
Instrument :
 BNA_M
 ClientSampleId :
 SLCS335



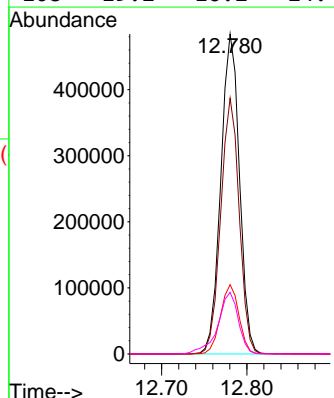
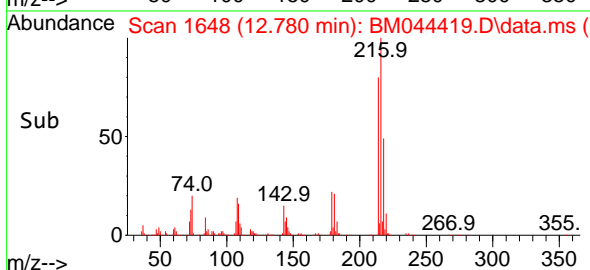
Tgt Ion:142 Resp: 1575744
 Ion Ratio Lower Upper
 142 100
 141 91.3 73.0 109.4
 116 3.8 2.7 4.1

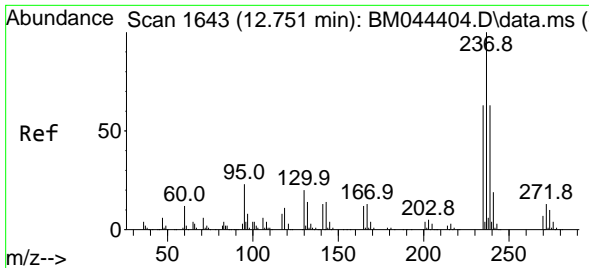


#39
 1,2,4,5-Tetrachlorobenzene
 Concen: 50.367 ng/ul
 RT: 12.780 min Scan# 1648
 Delta R.T. 0.012 min
 Lab File: BM044419.D
 Acq: 29 Feb 2024 00:13



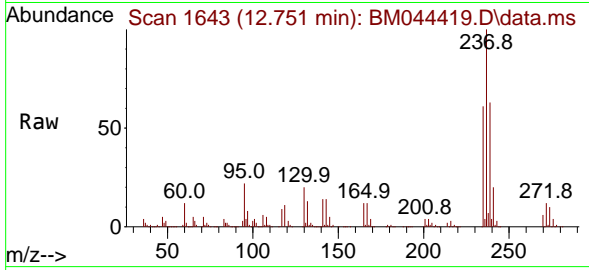
Tgt Ion:216 Resp: 735874
 Ion Ratio Lower Upper
 216 100
 214 79.9 63.9 95.9
 179 21.7 17.5 26.3
 108 19.2 16.2 24.4



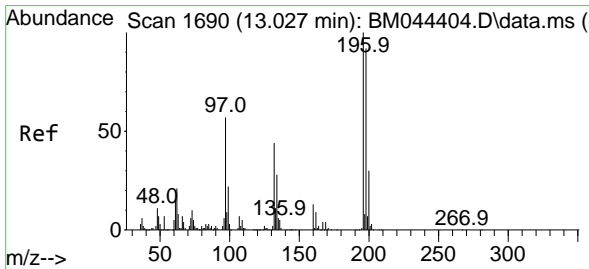
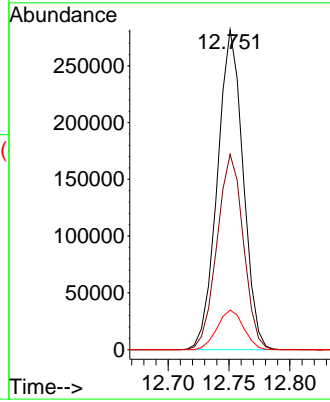
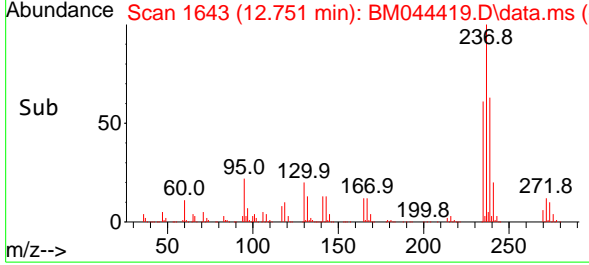


#40
 Hexachlorocyclopentadiene
 Concen: 42.158 ng/ul
 RT: 12.751 min Scan# 1643
 Delta R.T. 0.006 min
 Lab File: BM044419.D
 Acq: 29 Feb 2024 00:13

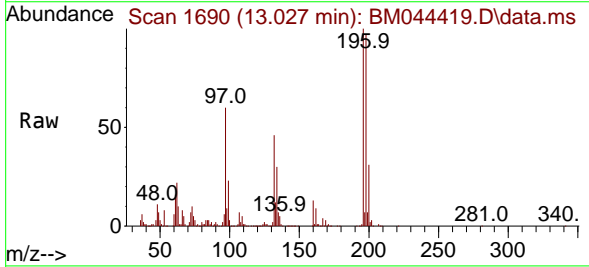
Instrument :
 BNA_M
 ClientSampleId :
 SLCS335



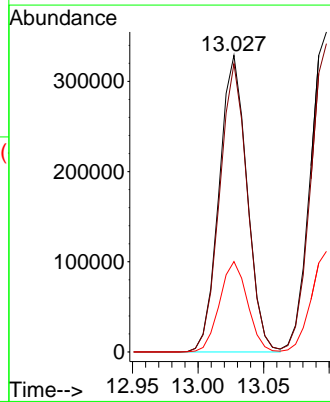
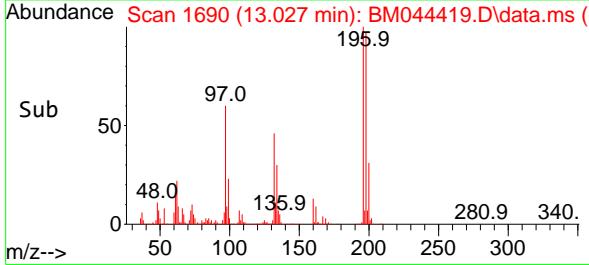
Tgt Ion:237 Resp: 414404
 Ion Ratio Lower Upper
 237 100
 235 61.0 49.4 74.2
 272 12.4 10.6 16.0

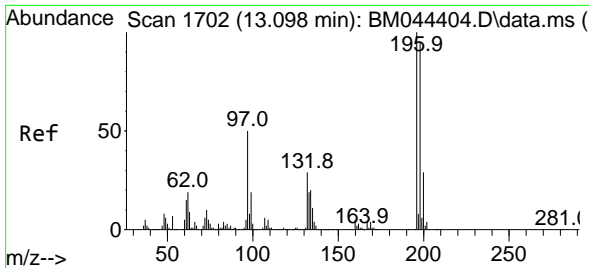


#41
 2,4,6-Trichlorophenol
 Concen: 52.306 ng/ul
 RT: 13.027 min Scan# 1690
 Delta R.T. 0.012 min
 Lab File: BM044419.D
 Acq: 29 Feb 2024 00:13



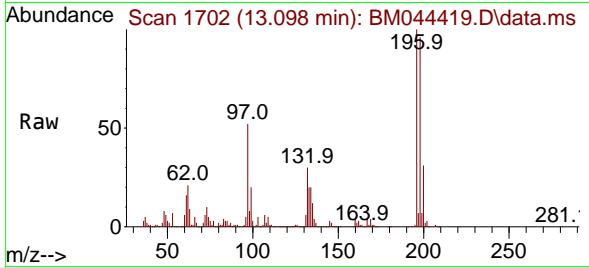
Tgt Ion:196 Resp: 487110
 Ion Ratio Lower Upper
 196 100
 198 97.2 76.1 114.1
 200 30.5 25.1 37.7





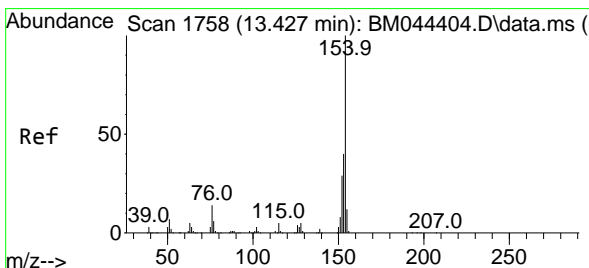
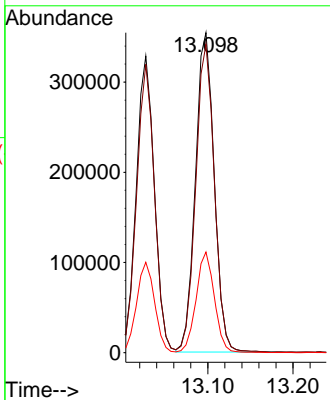
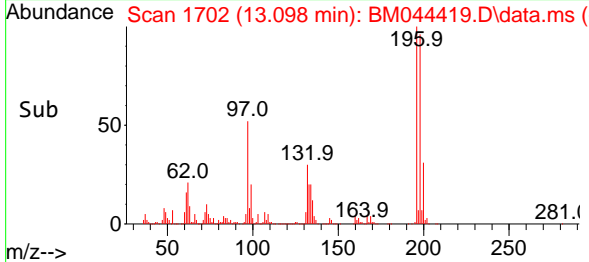
#42
 2,4,5-Trichlorophenol
 Concen: 53.773 ng/u1
 RT: 13.098 min Scan# 1702
 Delta R.T. 0.012 min
 Lab File: BM044419.D
 Acq: 29 Feb 2024 00:13

Instrument : BNA_M
 ClientSampleId : SLCS335

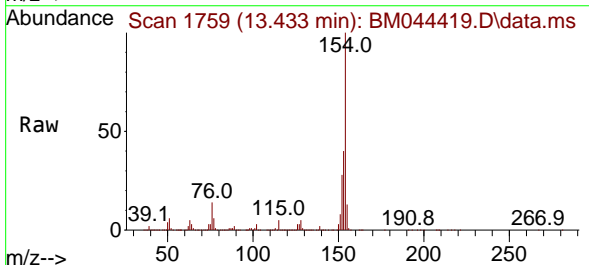


Tgt Ion:196 Resp: 541349

Ion	Ratio	Lower	Upper
196	100		
198	96.4	77.4	116.2
200	31.4	25.6	38.4

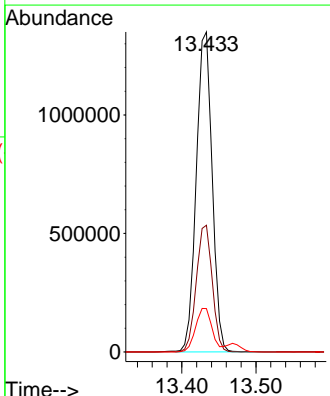
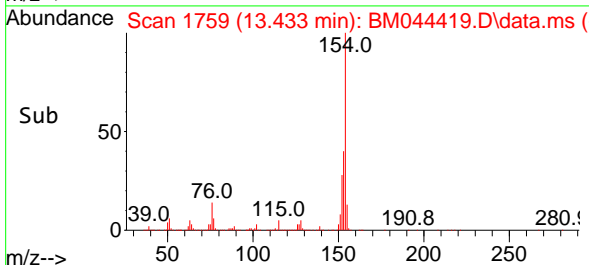


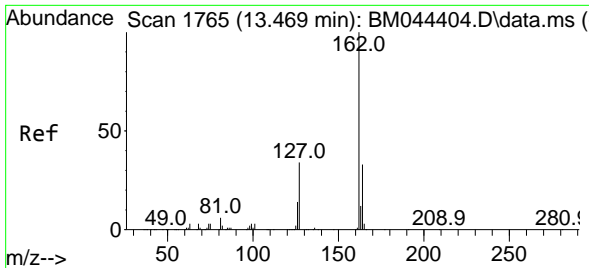
#43
 1,1'-Biphenyl
 Concen: 49.924 ng/u1
 RT: 13.433 min Scan# 1759
 Delta R.T. 0.012 min
 Lab File: BM044419.D
 Acq: 29 Feb 2024 00:13



Tgt Ion:154 Resp: 2005951

Ion	Ratio	Lower	Upper
154	100		
153	39.6	32.4	48.6
76	13.6	11.6	17.4



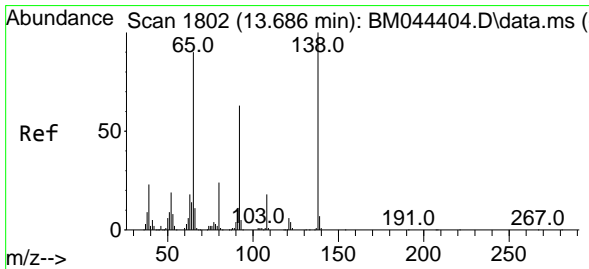
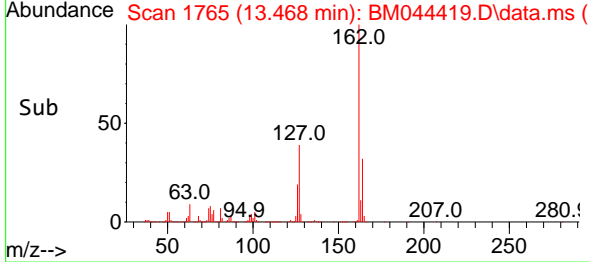
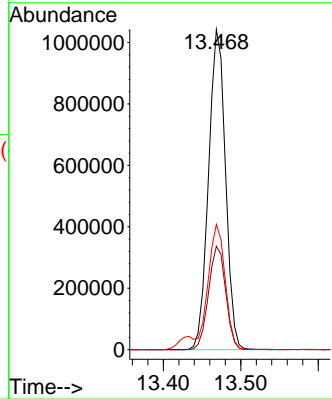
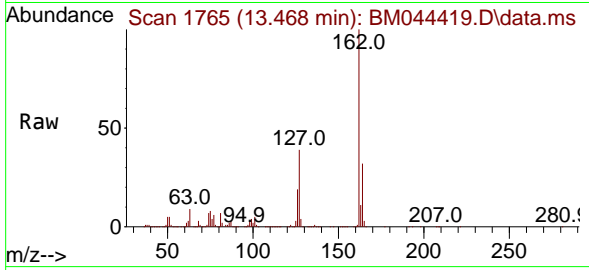


#44
 2-Chloronaphthalene
 Concen: 50.388 ng/ul
 RT: 13.468 min Scan# 1765
 Delta R.T. 0.006 min
 Lab File: BM044419.D
 Acq: 29 Feb 2024 00:13

Instrument : BNA_M
 ClientSampleId : SLCS335

Tgt Ion:162 Resp: 1585241

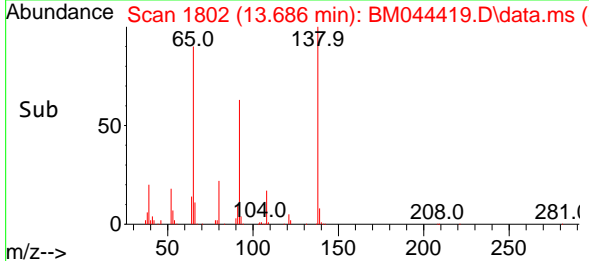
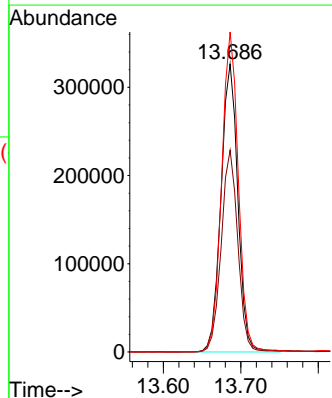
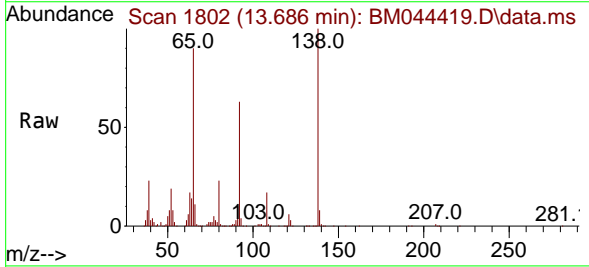
Ion	Ratio	Lower	Upper
162	100		
164	32.3	26.1	39.1
127	39.2	30.9	46.3

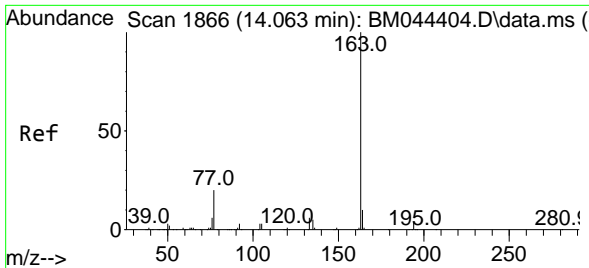


#45
 2-Nitroaniline
 Concen: 56.708 ng/ul
 RT: 13.686 min Scan# 1802
 Delta R.T. 0.012 min
 Lab File: BM044419.D
 Acq: 29 Feb 2024 00:13

Tgt Ion: 65 Resp: 493951

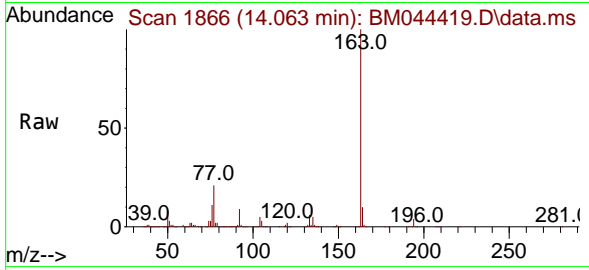
Ion	Ratio	Lower	Upper
65	100		
92	70.1	52.5	78.7
138	111.1	86.4	129.6



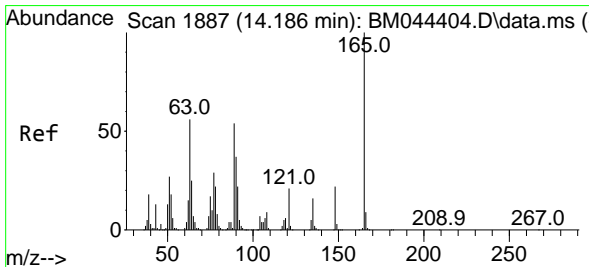
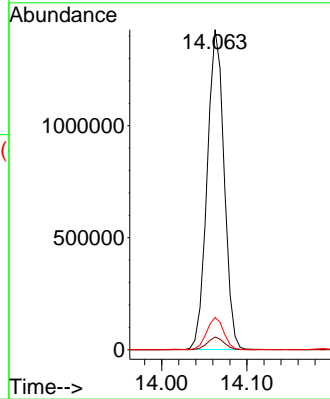
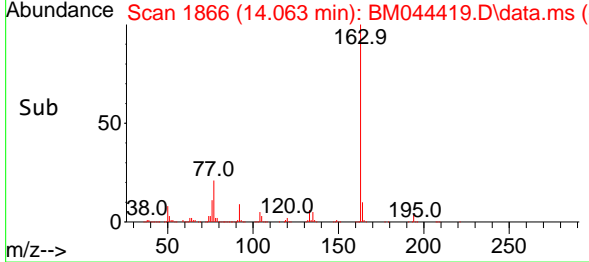


#47
 Dimethylphthalate
 Concen: 50.670 ng/ul
 RT: 14.063 min Scan# 1866
 Delta R.T. 0.012 min
 Lab File: BM044419.D
 Acq: 29 Feb 2024 00:13

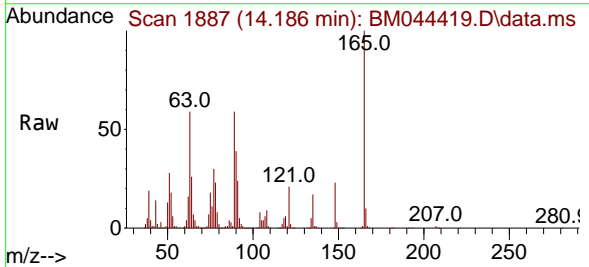
Instrument : BNA_M
 ClientSampleId : SLCS335



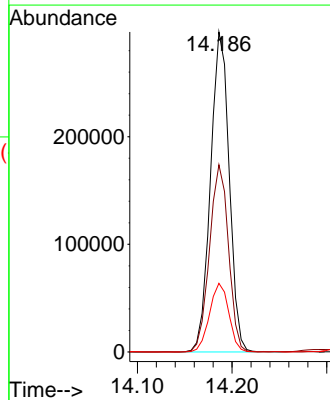
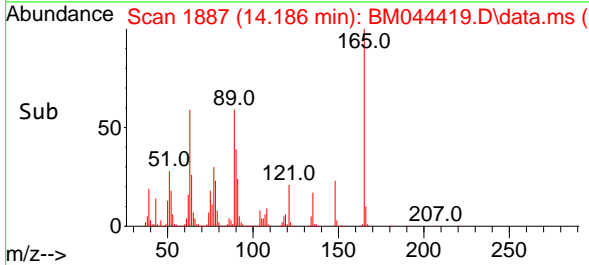
Tgt Ion:163 Resp: 1971208
 Ion Ratio Lower Upper
 163 100
 194 3.9 3.0 4.6
 164 10.1 8.1 12.1

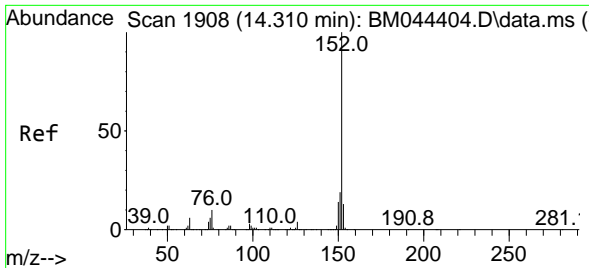


#48
 2,6-Dinitrotoluene
 Concen: 55.912 ng/ul
 RT: 14.186 min Scan# 1887
 Delta R.T. 0.012 min
 Lab File: BM044419.D
 Acq: 29 Feb 2024 00:13



Tgt Ion:165 Resp: 406782
 Ion Ratio Lower Upper
 165 100
 89 58.5 48.2 72.2
 121 21.5 18.7 28.1



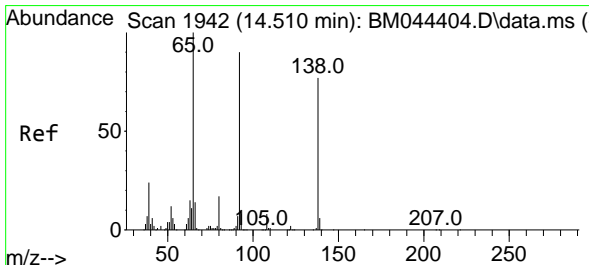
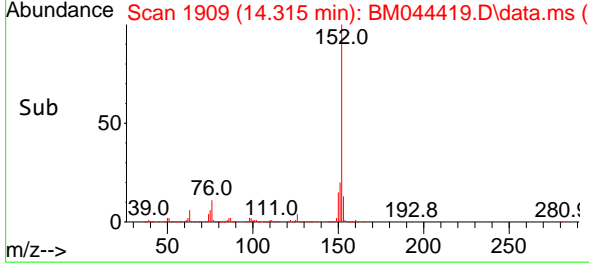
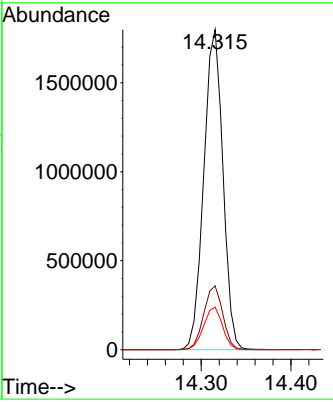
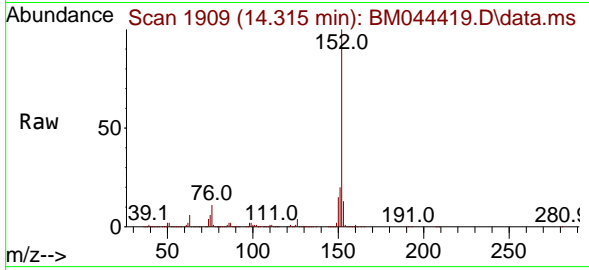


#50
 Acenaphthylene
 Concen: 51.218 ng/ul
 RT: 14.315 min Scan# 1909
 Delta R.T. 0.012 min
 Lab File: BM044419.D
 Acq: 29 Feb 2024 00:13

Instrument : BNA_M
 ClientSampleId : SLCS335

Tgt Ion:152 Resp: 2656832

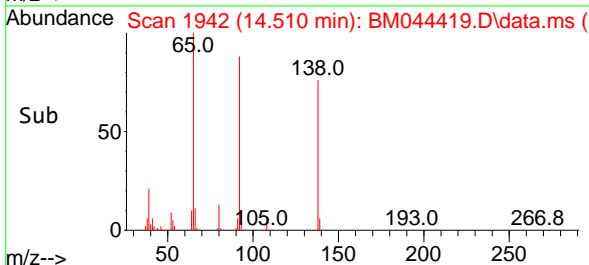
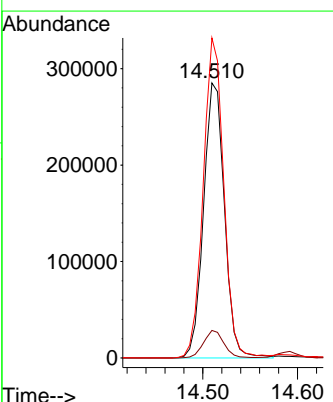
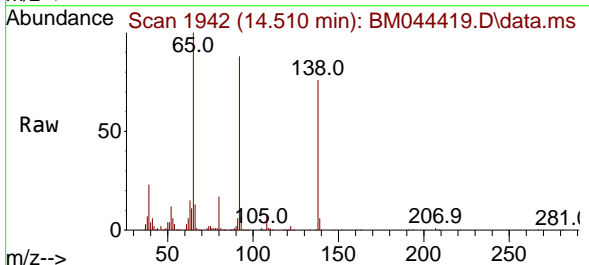
Ion	Ratio	Lower	Upper
152	100		
151	20.0	15.8	23.6
153	13.3	10.4	15.6

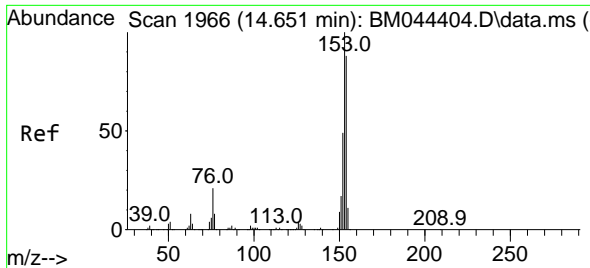


#51
 3-Nitroaniline
 Concen: 56.889 ng/ul
 RT: 14.510 min Scan# 1942
 Delta R.T. 0.006 min
 Lab File: BM044419.D
 Acq: 29 Feb 2024 00:13

Tgt Ion:138 Resp: 436641

Ion	Ratio	Lower	Upper
138	100		
108	10.0	8.6	12.8
92	116.3	93.8	140.6



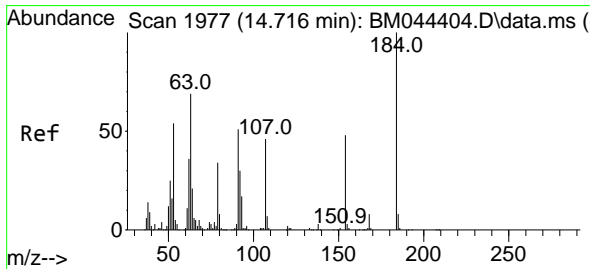
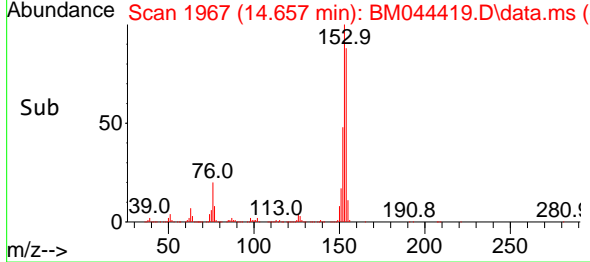
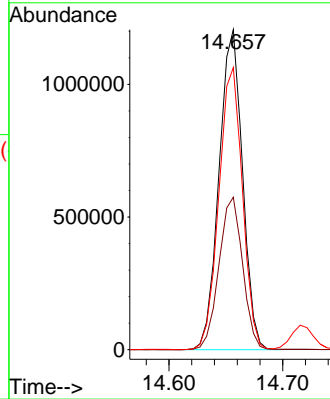
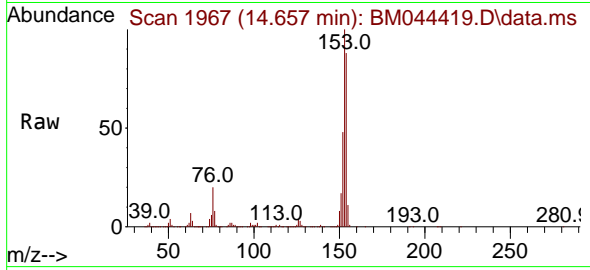


#52
 Acenaphthene
 Concen: 50.554 ng/u1
 RT: 14.657 min Scan# 1967
 Delta R.T. 0.012 min
 Lab File: BM044419.D
 Acq: 29 Feb 2024 00:13

Instrument :
 BNA_M
 ClientSampleId :
 SLCS335

Tgt Ion:153 Resp: 1731222

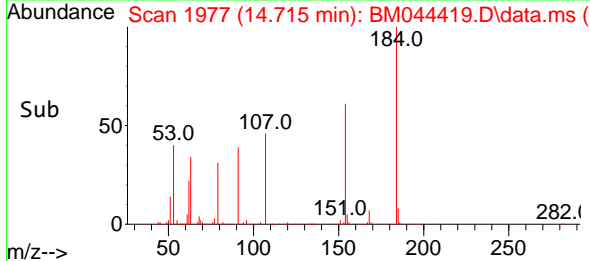
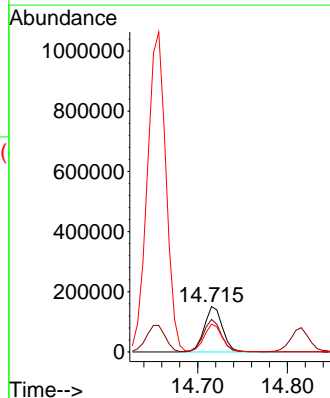
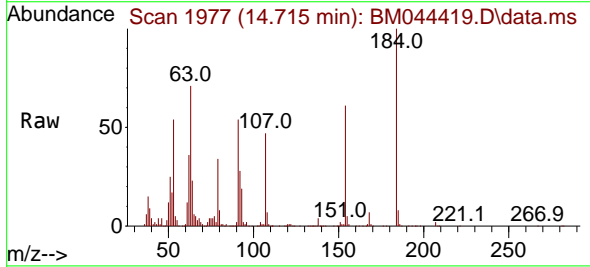
Ion	Ratio	Lower	Upper
153	100		
152	47.7	38.5	57.7
154	88.2	70.8	106.2

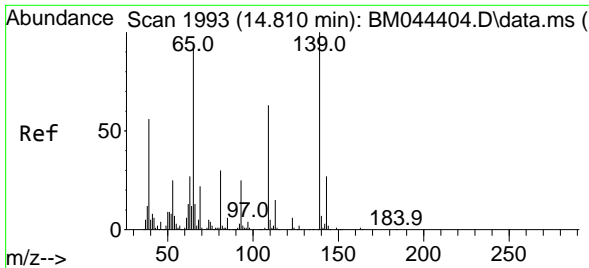


#53
 2,4-Dinitrophenol
 Concen: 47.275 ng/u1
 RT: 14.715 min Scan# 1977
 Delta R.T. 0.006 min
 Lab File: BM044419.D
 Acq: 29 Feb 2024 00:13

Tgt Ion:184 Resp: 213425

Ion	Ratio	Lower	Upper
184	100		
63	71.4	58.4	87.6
154	61.3	46.4	69.6

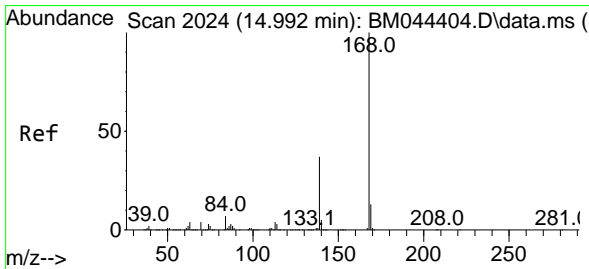
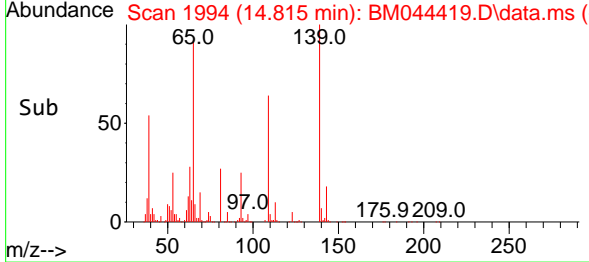
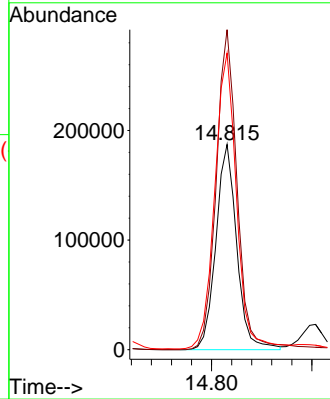
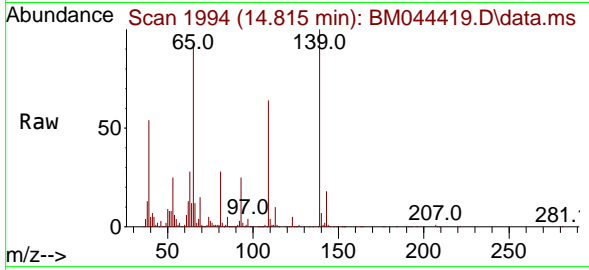




#55
 4-Nitrophenol
 Concen: 51.809 ng/u1
 RT: 14.815 min Scan# 1994
 Delta R.T. 0.012 min
 Lab File: BM044419.D
 Acq: 29 Feb 2024 00:13

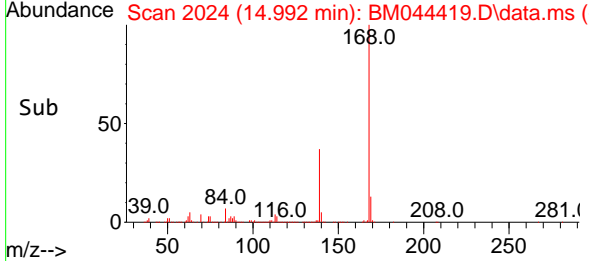
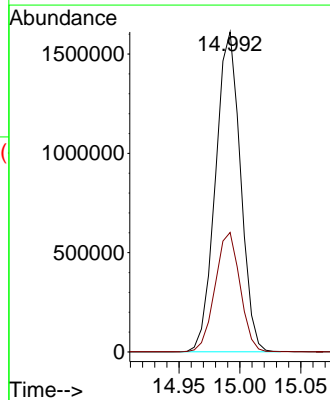
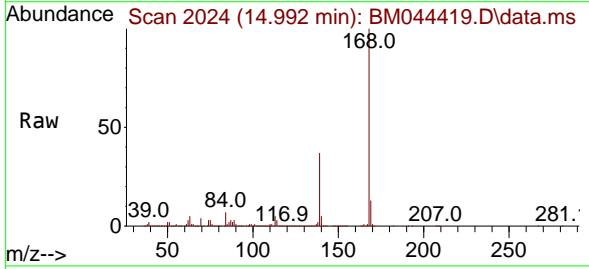
Instrument :
 BNA_M
 ClientSampleId :
 SLCS335

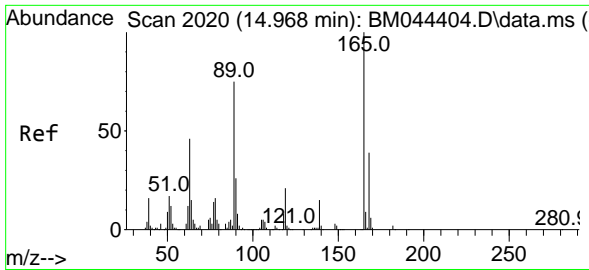
Tgt Ion:109 Resp: 269576
 Ion Ratio Lower Upper
 109 100
 139 155.9 123.0 184.6
 65 144.6 122.2 183.2



#56
 Dibenzofuran
 Concen: 50.008 ng/u1
 RT: 14.992 min Scan# 2024
 Delta R.T. 0.012 min
 Lab File: BM044419.D
 Acq: 29 Feb 2024 00:13

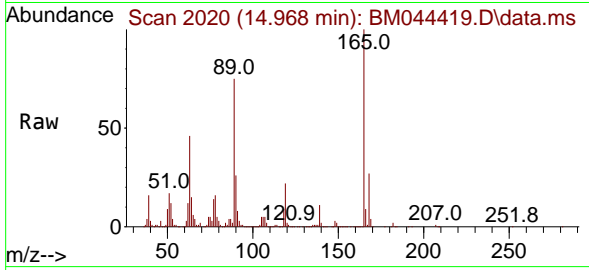
Tgt Ion:168 Resp: 2298901
 Ion Ratio Lower Upper
 168 100
 139 37.3 29.9 44.9



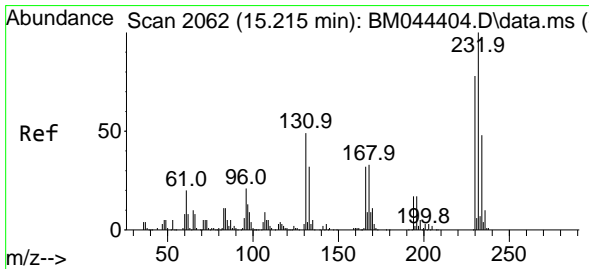
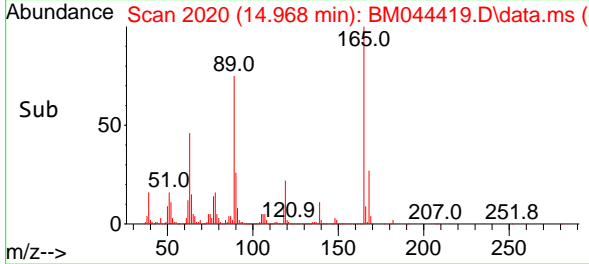
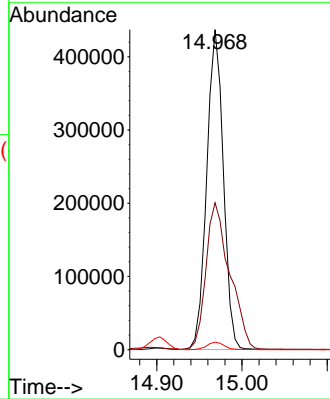


#57
 2,4-Dinitrotoluene
 Concen: 56.574 ng/ul
 RT: 14.968 min Scan# 2020
 Delta R.T. 0.012 min
 Lab File: BM044419.D
 Acq: 29 Feb 2024 00:13

Instrument :
 BNA_M
 ClientSampleId :
 SLCS335

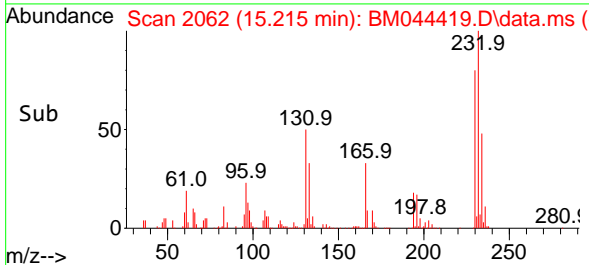
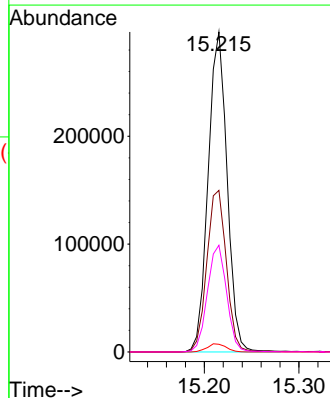
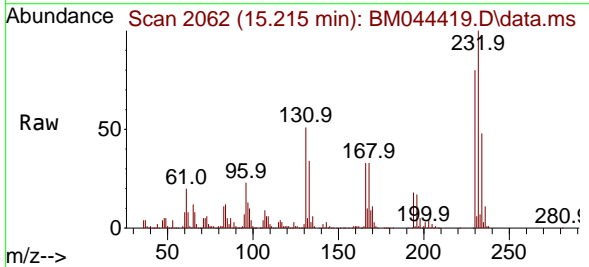


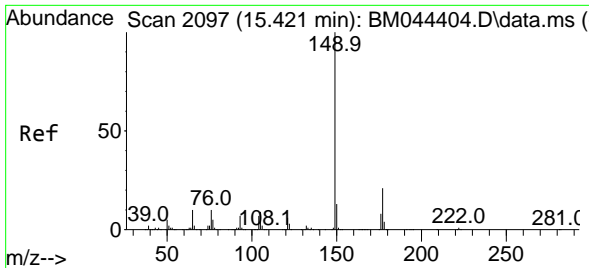
Tgt Ion:165 Resp: 591315
 Ion Ratio Lower Upper
 165 100
 63 45.9 37.9 56.9
 182 2.4 1.8 2.6



#58
 2,3,4,6-Tetrachlorophenol
 Concen: 51.003 ng/ul
 RT: 15.215 min Scan# 2062
 Delta R.T. 0.012 min
 Lab File: BM044419.D
 Acq: 29 Feb 2024 00:13

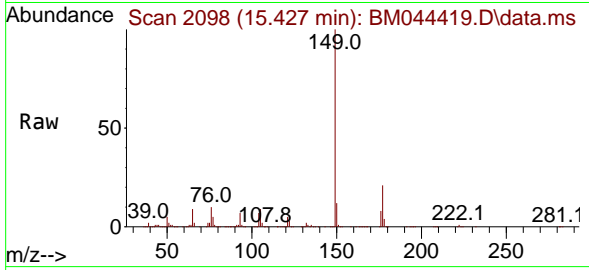
Tgt Ion:232 Resp: 413221
 Ion Ratio Lower Upper
 232 100
 131 50.5 41.9 62.9
 130 2.4 1.8 2.8
 166 33.4 26.9 40.3



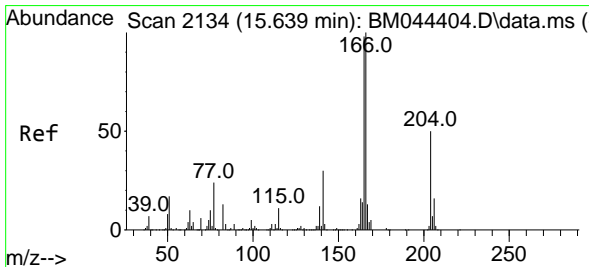
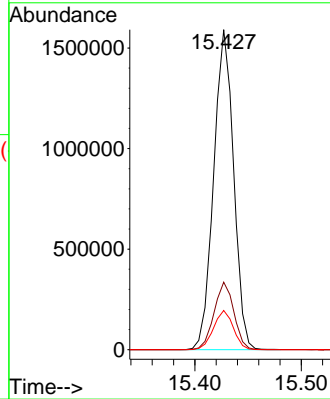
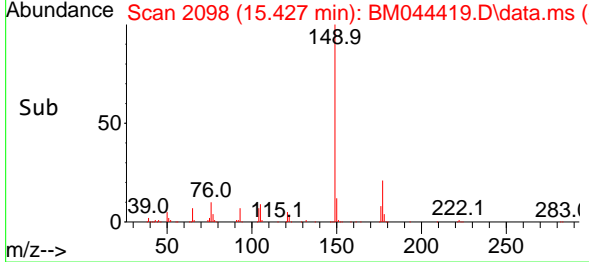


#59
 Diethylphthalate
 Concen: 51.675 ng/uI
 RT: 15.427 min Scan# 2098
 Delta R.T. 0.012 min
 Lab File: BM044419.D
 Acq: 29 Feb 2024 00:13

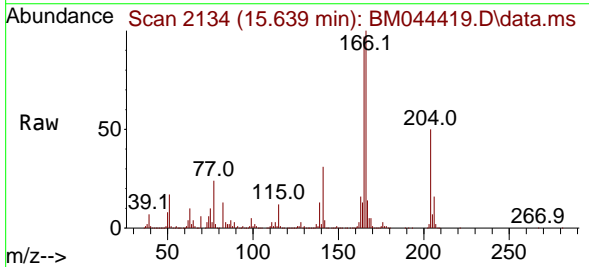
Instrument :
 BNA_M
 ClientSampleId :
 SLCS335



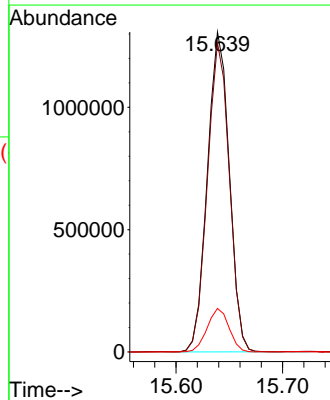
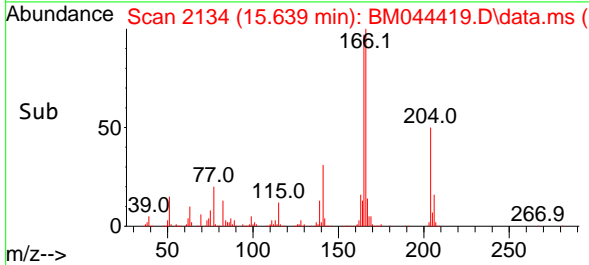
Tgt Ion:149 Resp: 2069315
 Ion Ratio Lower Upper
 149 100
 177 21.1 17.0 25.6
 150 12.3 9.6 14.4

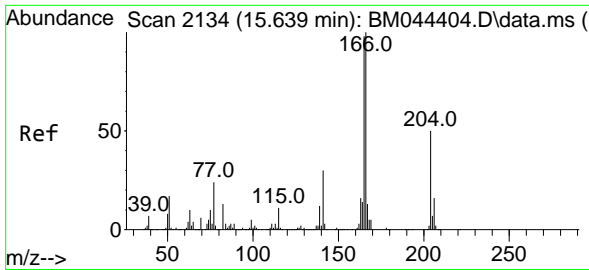


#61
 Fluorene
 Concen: 50.846 ng/uI
 RT: 15.639 min Scan# 2134
 Delta R.T. 0.006 min
 Lab File: BM044419.D
 Acq: 29 Feb 2024 00:13



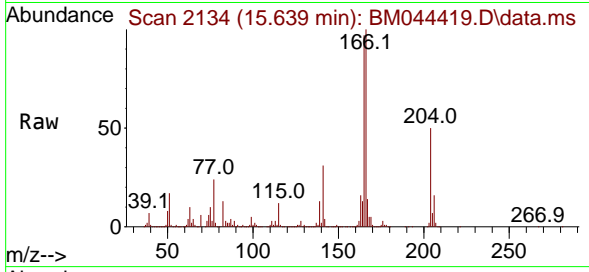
Tgt Ion:166 Resp: 1877378
 Ion Ratio Lower Upper
 166 100
 165 96.6 77.4 116.0
 167 13.6 10.8 16.2



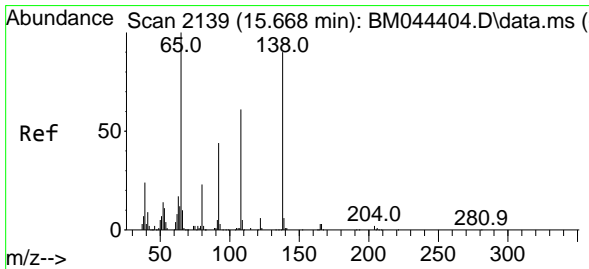
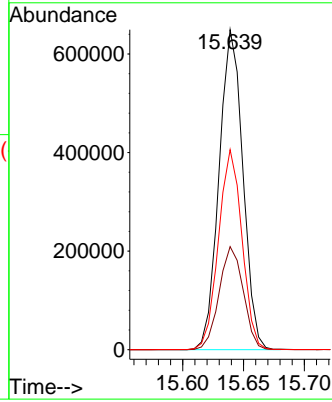
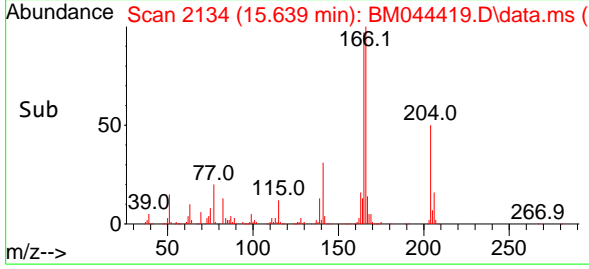


#62
 4-Chlorophenyl-phenylether
 Concen: 50.825 ng/ul
 RT: 15.639 min Scan# 2134
 Delta R.T. 0.006 min
 Lab File: BM044419.D
 Acq: 29 Feb 2024 00:13

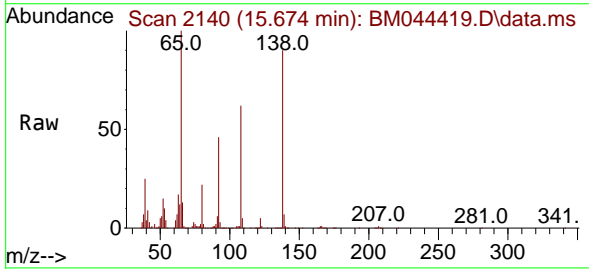
Instrument :
 BNA_M
 ClientSampleId :
 SLCS335



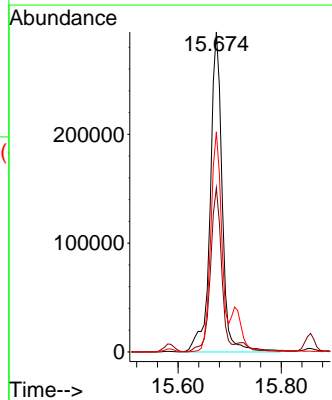
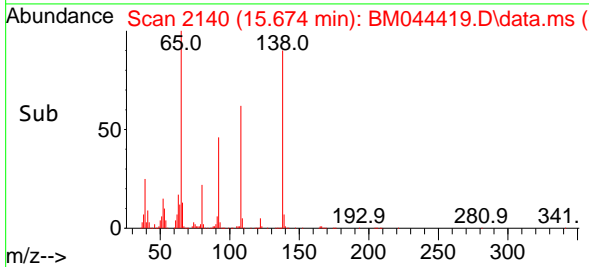
Tgt Ion:204 Resp: 884398
 Ion Ratio Lower Upper
 204 100
 206 32.2 26.9 40.3
 141 62.5 48.3 72.5

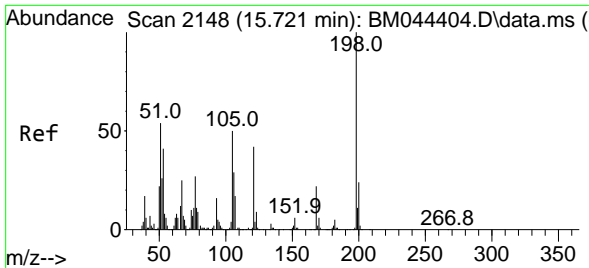


#63
 4-Nitroaniline
 Concen: 64.012 ng/ul
 RT: 15.674 min Scan# 2140
 Delta R.T. 0.012 min
 Lab File: BM044419.D
 Acq: 29 Feb 2024 00:13



Tgt Ion:138 Resp: 475199
 Ion Ratio Lower Upper
 138 100
 92 51.3 40.9 61.3
 108 68.8 55.1 82.7

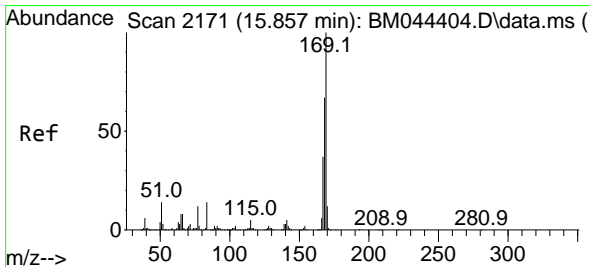
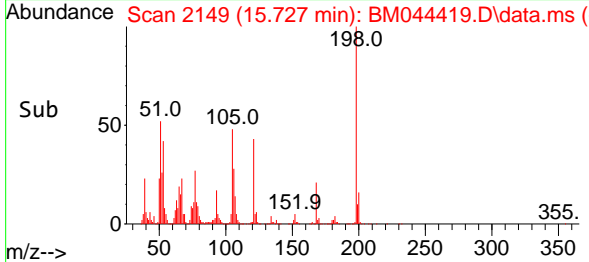
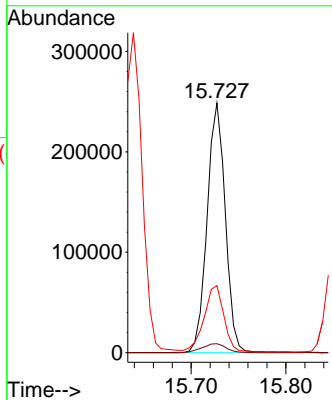
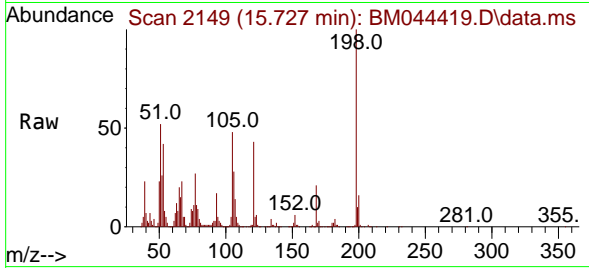




#66
 4,6-Dinitro-2-methylphenol
 Concen: 47.884 ng/ul
 RT: 15.727 min Scan# 2148
 Delta R.T. 0.012 min
 Lab File: BM044419.D
 Acq: 29 Feb 2024 00:13

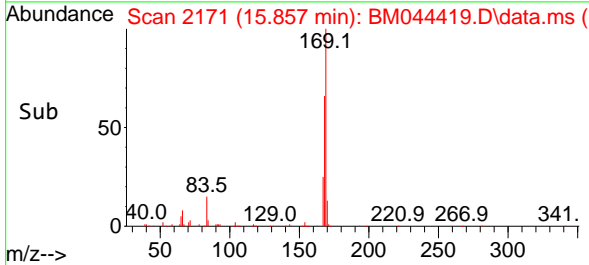
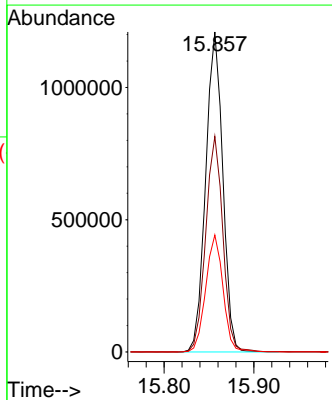
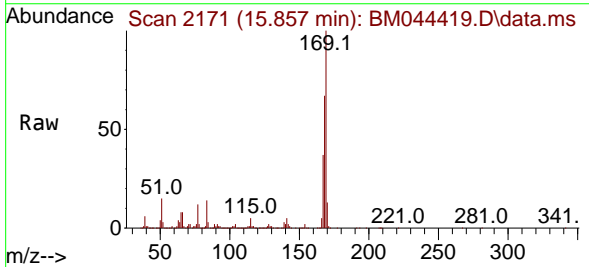
Instrument :
 BNA_M
 ClientSampleId :
 SLCS335

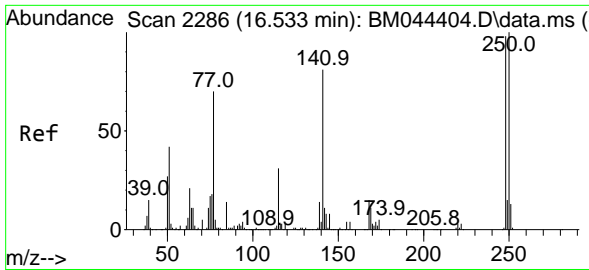
Tgt Ion:198 Resp: 331791
 Ion Ratio Lower Upper
 198 100
 182 3.6 3.8 5.8#
 77 26.9 20.6 30.8



#67
 N-Nitrosodiphenylamine
 Concen: 51.699 ng/ul
 RT: 15.857 min Scan# 2171
 Delta R.T. 0.012 min
 Lab File: BM044419.D
 Acq: 29 Feb 2024 00:13

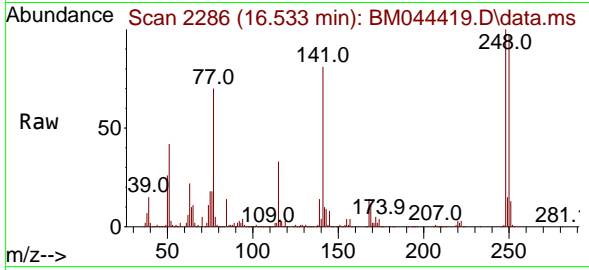
Tgt Ion:169 Resp: 1599363
 Ion Ratio Lower Upper
 169 100
 168 67.3 53.6 80.4
 167 36.6 29.2 43.8



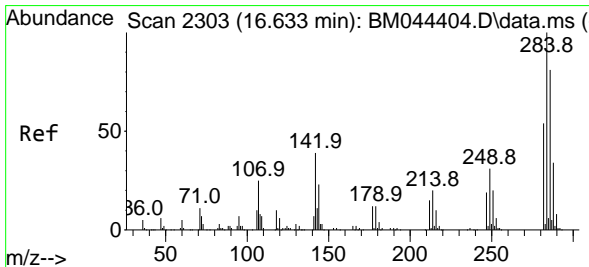
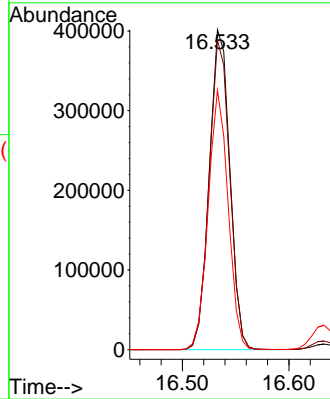
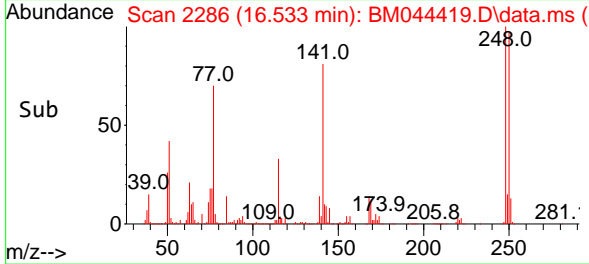


#68
 4-Bromophenyl-phenylether
 Concen: 53.257 ng/ul
 RT: 16.533 min Scan# 21
 Delta R.T. 0.006 min
 Lab File: BM044419.D
 Acq: 29 Feb 2024 00:13

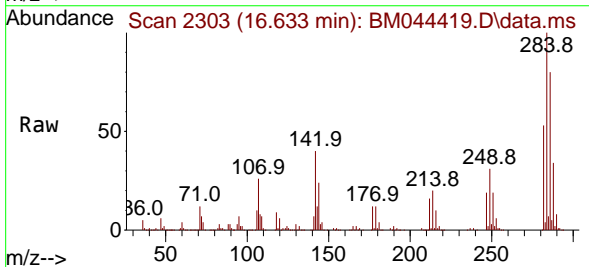
Instrument :
 BNA_M
 ClientSampleId :
 SLCS335



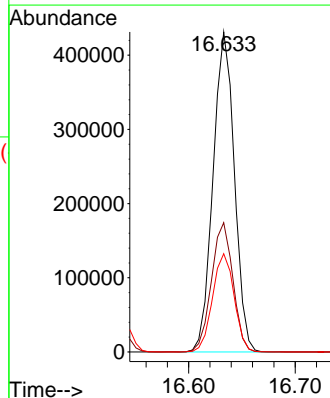
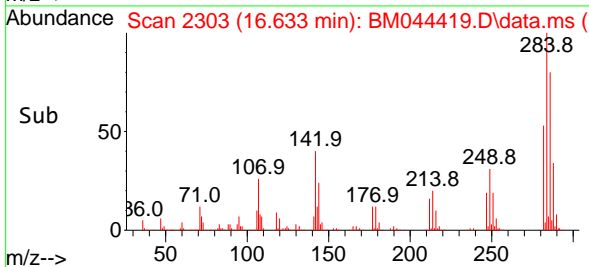
Tgt Ion:248 Resp: 540178
 Ion Ratio Lower Upper
 248 100
 250 96.8 79.8 119.8
 141 81.1 65.8 98.8

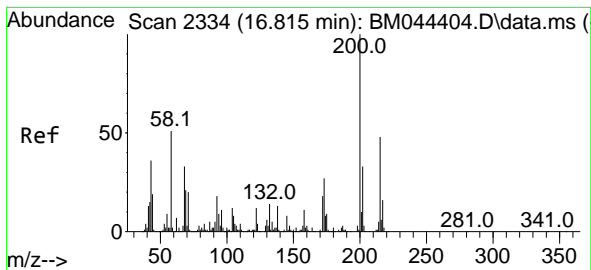


#69
 Hexachlorobenzene
 Concen: 51.560 ng/ul
 RT: 16.633 min Scan# 2303
 Delta R.T. 0.006 min
 Lab File: BM044419.D
 Acq: 29 Feb 2024 00:13



Tgt Ion:284 Resp: 598558
 Ion Ratio Lower Upper
 284 100
 142 40.4 33.4 50.2
 249 30.7 24.7 37.1

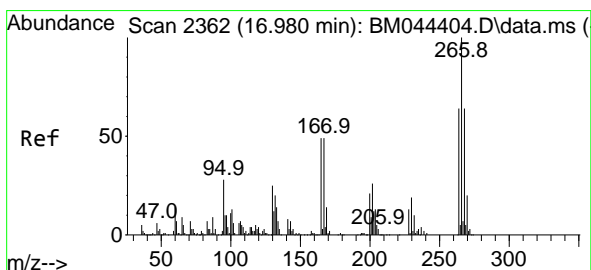
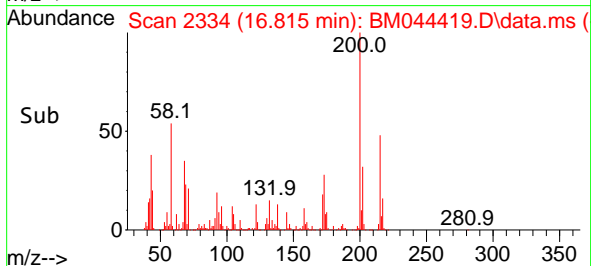
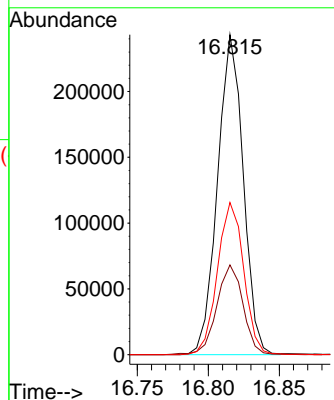
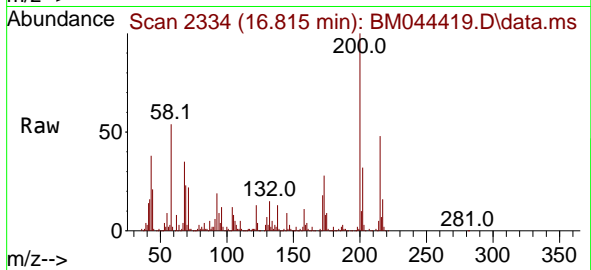




#70
 Atrazine
 Concen: 30.173 ng/uI
 RT: 16.815 min Scan# 21
 Delta R.T. 0.006 min
 Lab File: BM044419.D
 Acq: 29 Feb 2024 00:13

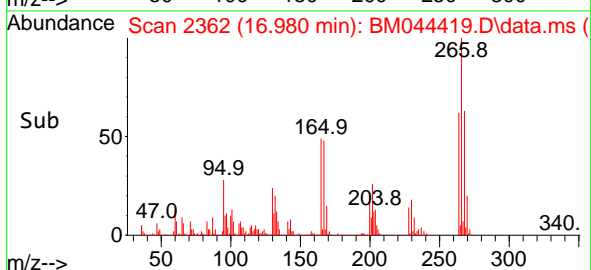
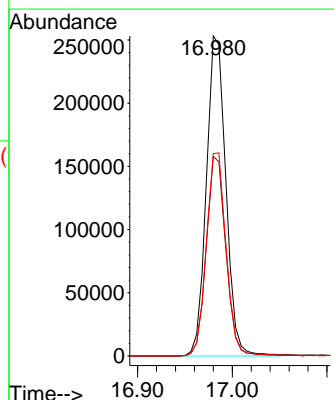
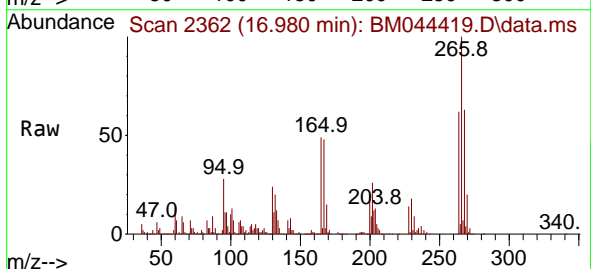
Instrument :
 BNA_M
 ClientSampleId :
 SLCS335

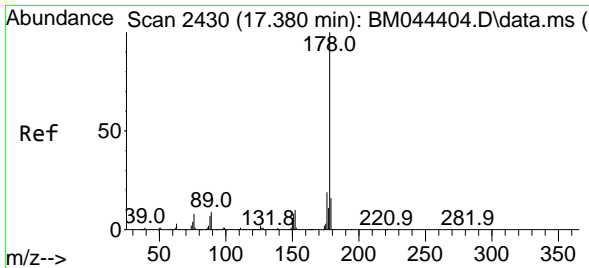
Tgt Ion:200 Resp: 305765
 Ion Ratio Lower Upper
 200 100
 173 28.0 22.5 33.7
 215 47.6 37.8 56.6



#71
 Pentachlorophenol
 Concen: 47.272 ng/uI
 RT: 16.980 min Scan# 2362
 Delta R.T. 0.006 min
 Lab File: BM044419.D
 Acq: 29 Feb 2024 00:13

Tgt Ion:266 Resp: 361650
 Ion Ratio Lower Upper
 266 100
 264 62.3 50.9 76.3
 268 63.3 51.1 76.7



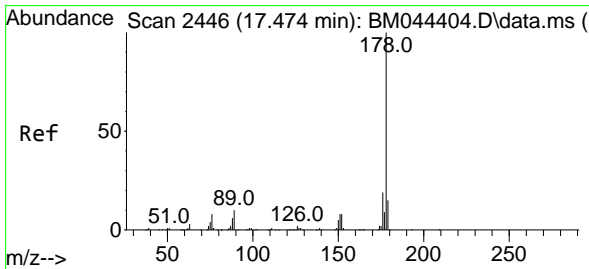
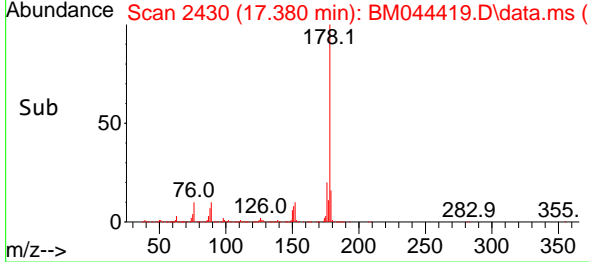
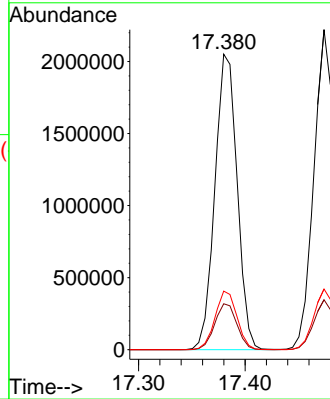
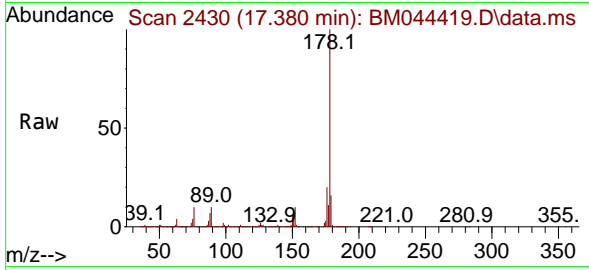


#72
 Phenanthrene
 Concen: 50.812 ng/u1
 RT: 17.380 min Scan# 2430
 Delta R.T. 0.006 min
 Lab File: BM044419.D
 Acq: 29 Feb 2024 00:13

Instrument : BNA_M
 ClientSampleId : SLCS335

Tgt Ion:178 Resp: 2975662

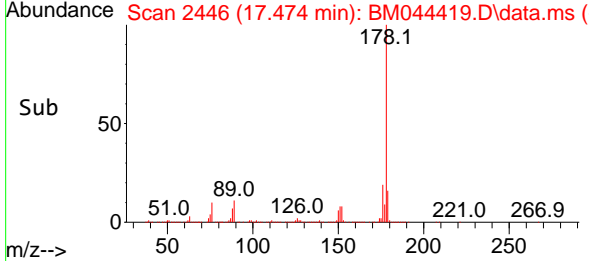
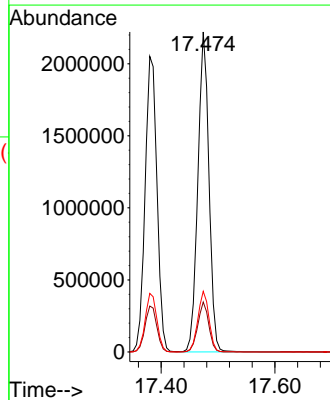
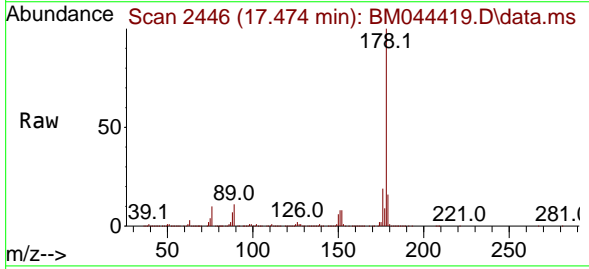
Ion	Ratio	Lower	Upper
178	100		
179	15.5	12.2	18.4
176	19.8	15.6	23.4

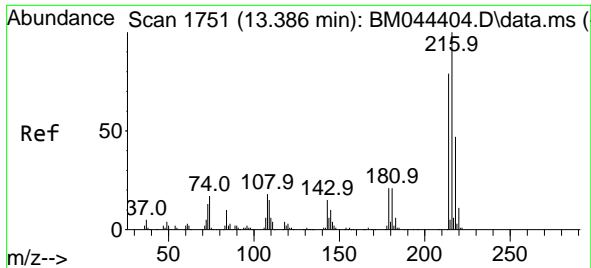


#74
 Anthracene
 Concen: 51.270 ng/u1
 RT: 17.474 min Scan# 2446
 Delta R.T. 0.012 min
 Lab File: BM044419.D
 Acq: 29 Feb 2024 00:13

Tgt Ion:178 Resp: 3023006

Ion	Ratio	Lower	Upper
178	100		
179	15.6	12.2	18.2
176	19.0	15.4	23.0



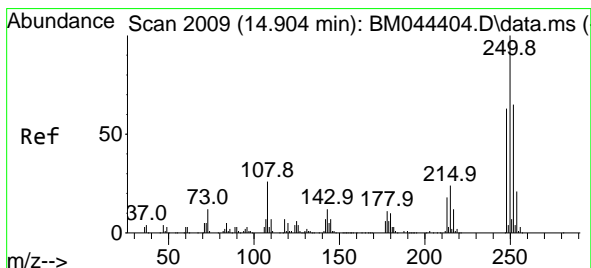
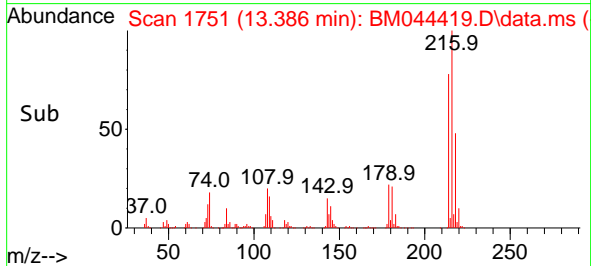
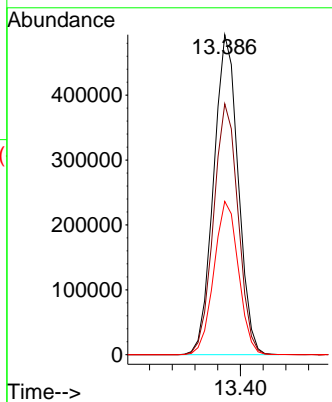
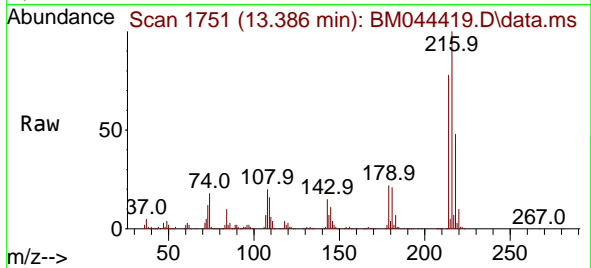


#75
 1,2,3,4-Tetrachlorobenzene
 Concen: 51.866 ng/uL
 RT: 13.386 min Scan# 1751
 Delta R.T. 0.006 min
 Lab File: BM044419.D
 Acq: 29 Feb 2024 00:13

Instrument :
 BNA_M
 ClientSampleId :
 SLCS335

Tgt Ion:216 Resp: 741167

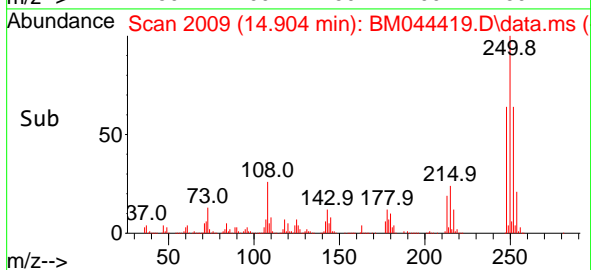
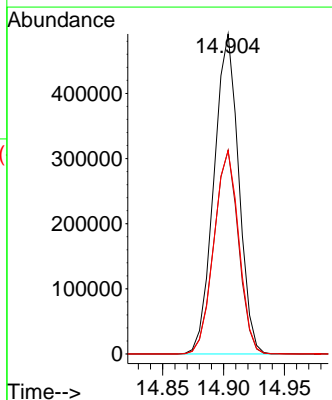
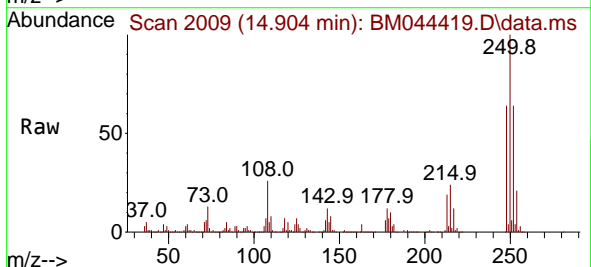
Ion	Ratio	Lower	Upper
216	100		
214	78.4	61.9	92.9
218	47.9	37.9	56.9

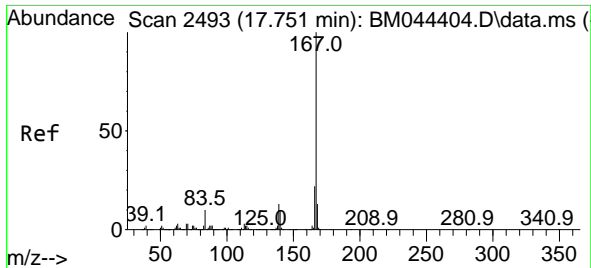


#76
 Pentachlorobenzene
 Concen: 51.003 ng/uL
 RT: 14.904 min Scan# 2009
 Delta R.T. 0.012 min
 Lab File: BM044419.D
 Acq: 29 Feb 2024 00:13

Tgt Ion:250 Resp: 695768

Ion	Ratio	Lower	Upper
250	100		
248	63.7	48.6	73.0
252	63.5	50.0	75.0



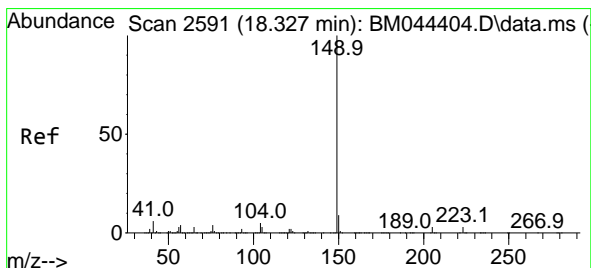
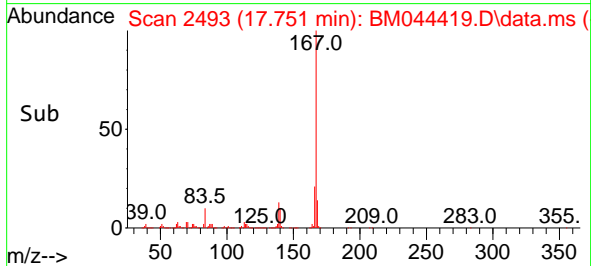
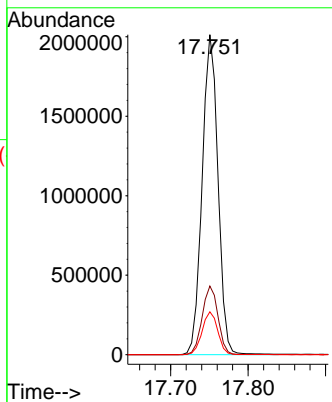
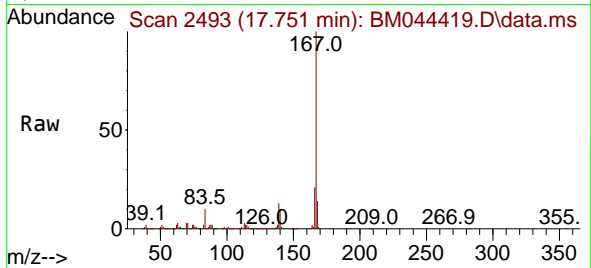


#77
 Carbazole
 Concen: 51.456 ng/uI
 RT: 17.751 min Scan# 2493
 Delta R.T. 0.006 min
 Lab File: BM044419.D
 Acq: 29 Feb 2024 00:13

Instrument :
 BNA_M
 ClientSampleId :
 SLCS335

Tgt Ion:167 Resp: 2852864

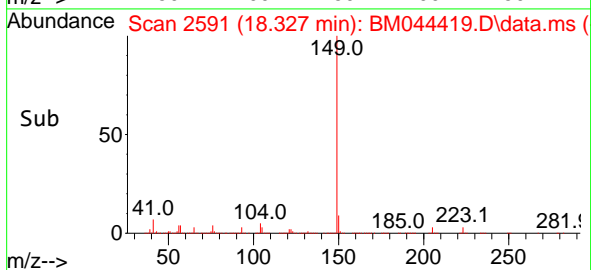
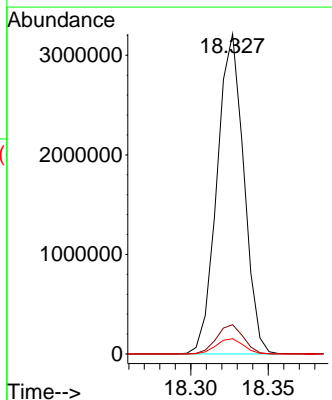
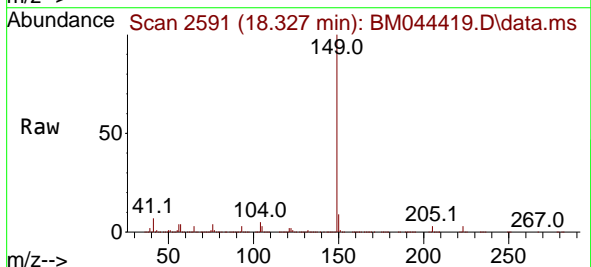
Ion	Ratio	Lower	Upper
167	100		
166	21.5	17.1	25.7
139	13.4	10.7	16.1

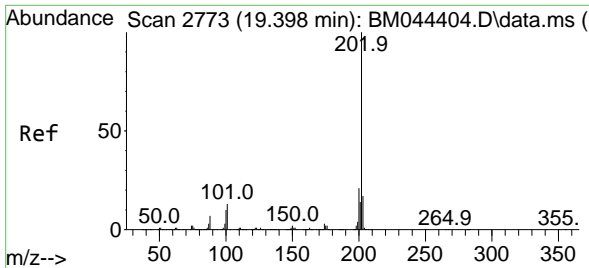


#78
 Di-n-butylphthalate
 Concen: 55.091 ng/uI
 RT: 18.327 min Scan# 2591
 Delta R.T. 0.012 min
 Lab File: BM044419.D
 Acq: 29 Feb 2024 00:13

Tgt Ion:149 Resp: 3867260

Ion	Ratio	Lower	Upper
149	100		
150	9.1	7.3	10.9
104	4.8	3.8	5.8



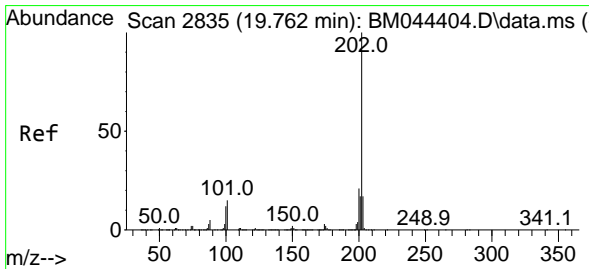
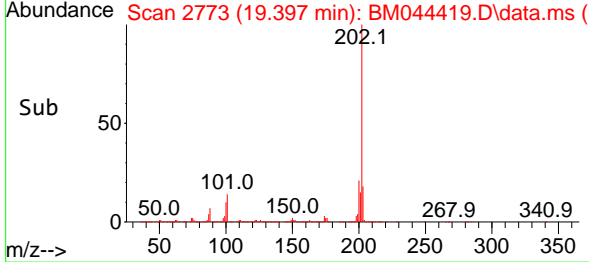
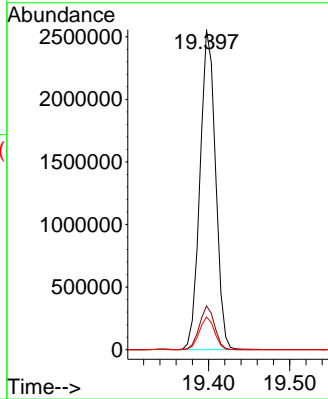
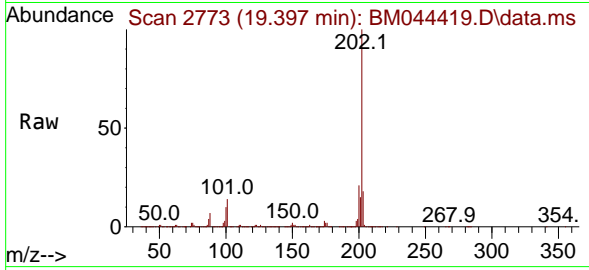


#80
 Fluoranthene
 Concen: 54.206 ng/u1
 RT: 19.397 min Scan# 21
 Delta R.T. 0.006 min
 Lab File: BM044419.D
 Acq: 29 Feb 2024 00:13

Instrument :
 BNA_M
 ClientSampleId :
 SLCS335

Tgt Ion:202 Resp: 3395582

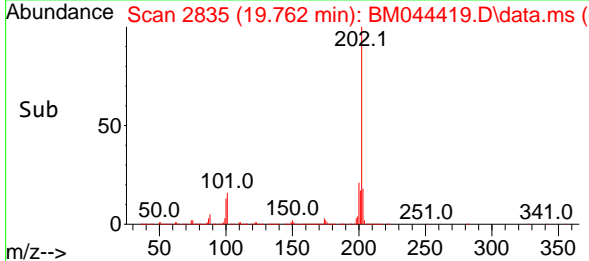
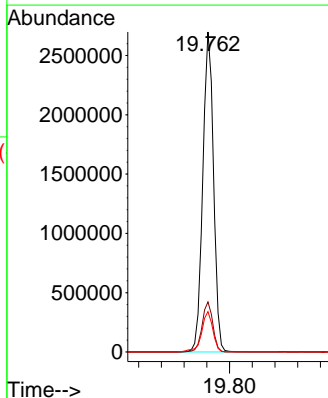
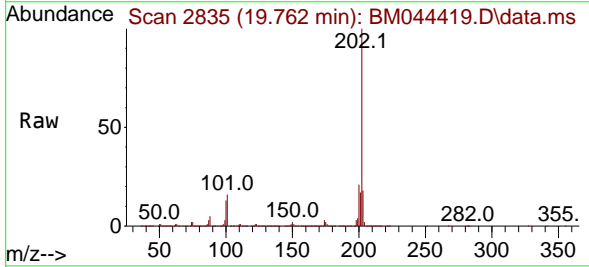
Ion	Ratio	Lower	Upper
202	100		
101	13.7	11.1	16.7
100	10.2	8.2	12.2

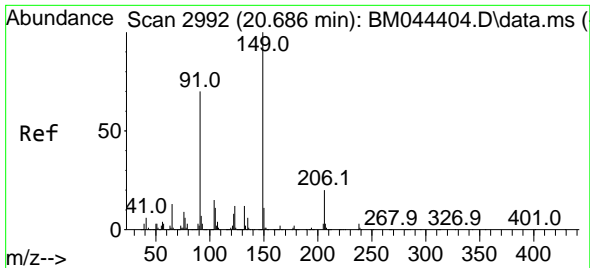


#82
 Pyrene
 Concen: 53.679 ng/u1
 RT: 19.762 min Scan# 2835
 Delta R.T. 0.006 min
 Lab File: BM044419.D
 Acq: 29 Feb 2024 00:13

Tgt Ion:202 Resp: 3526415

Ion	Ratio	Lower	Upper
202	100		
101	15.6	12.6	18.8
100	12.6	10.2	15.2



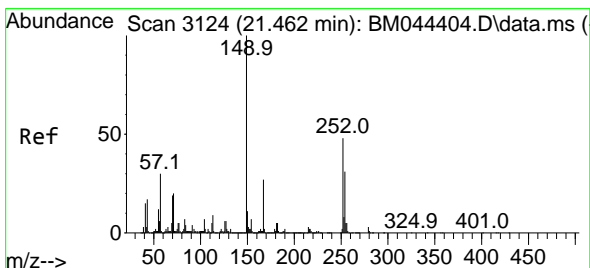
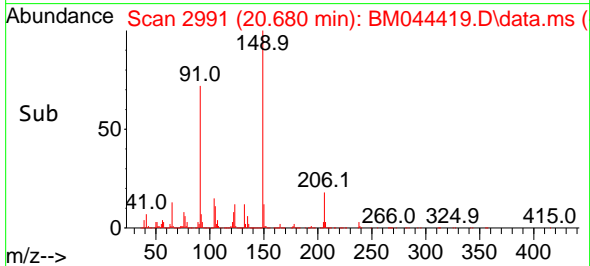
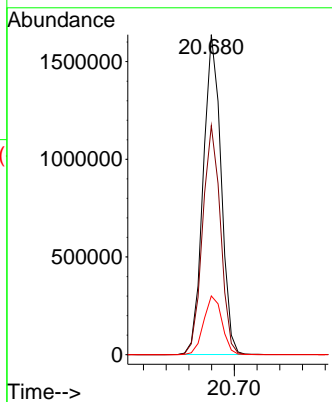
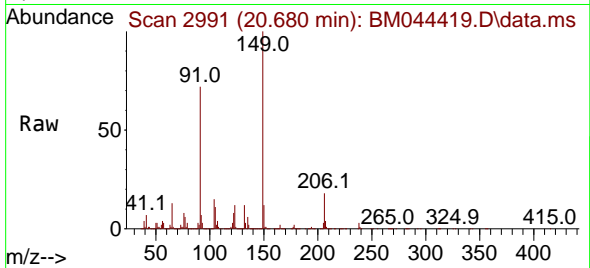


#83
 Butylbenzylphthalate
 Concen: 60.408 ng/ul
 RT: 20.680 min Scan# 2991
 Delta R.T. 0.006 min
 Lab File: BM044419.D
 Acq: 29 Feb 2024 00:13

Instrument : BNA_M
 ClientSampleId : SLCS335

Tgt Ion:149 Resp: 1782457

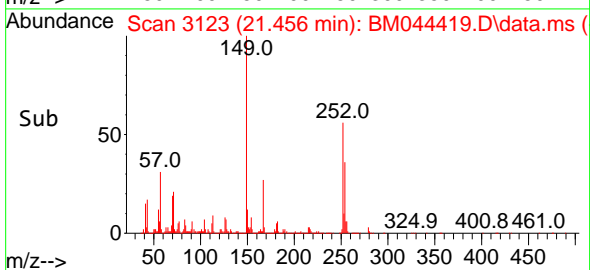
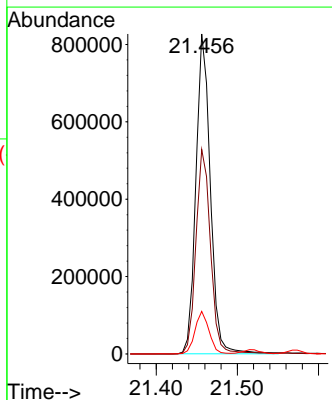
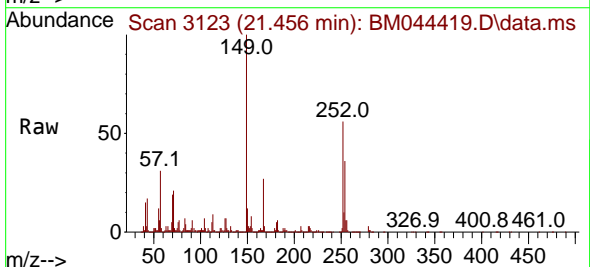
Ion	Ratio	Lower	Upper
149	100		
91	71.6	58.1	87.1
206	18.4	15.0	22.4

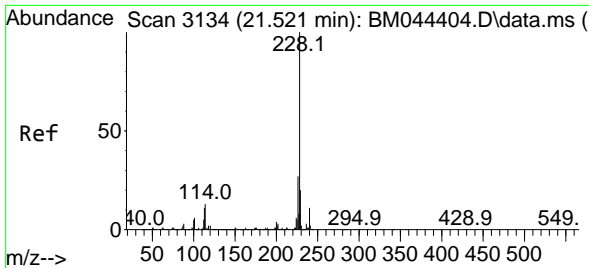


#84
 3,3'-Dichlorobenzidine
 Concen: 52.788 ng/ul
 RT: 21.456 min Scan# 3123
 Delta R.T. 0.000 min
 Lab File: BM044419.D
 Acq: 29 Feb 2024 00:13

Tgt Ion:252 Resp: 1025099

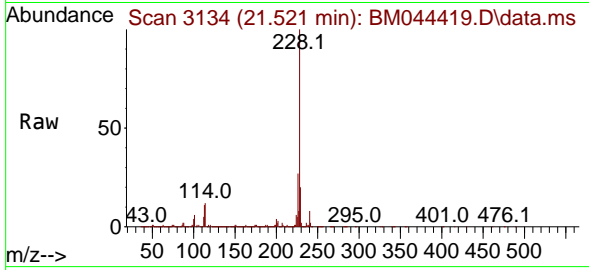
Ion	Ratio	Lower	Upper
252	100		
254	63.9	51.6	77.4
126	13.3	11.2	16.8



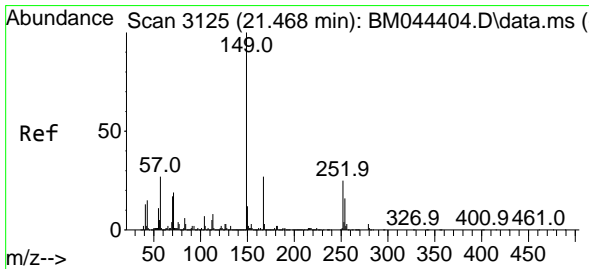
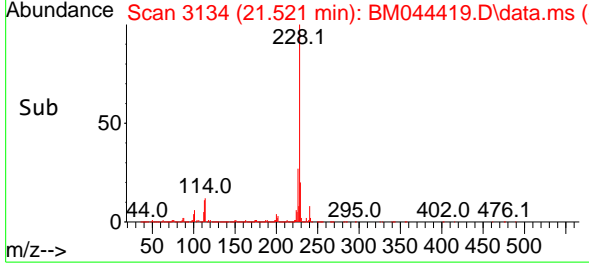
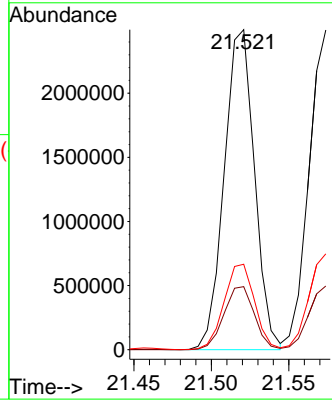


#85
 Benzo(a)anthracene
 Concen: 52.361 ng/ul
 RT: 21.521 min Scan# 3134
 Delta R.T. 0.006 min
 Lab File: BM044419.D
 Acq: 29 Feb 2024 00:13

Instrument :
 BNA_M
 ClientSampleId :
 SLCS335

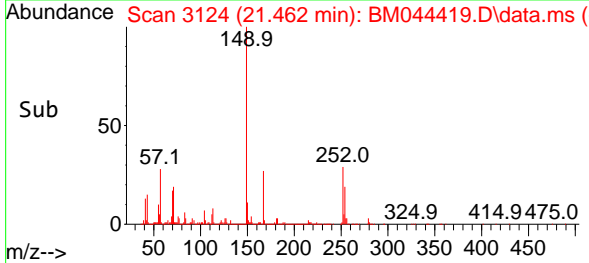
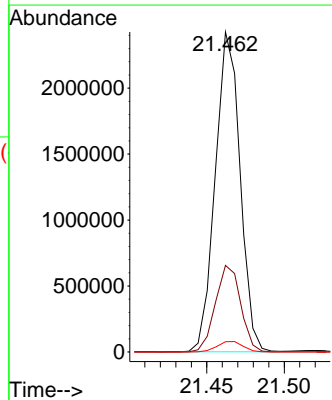
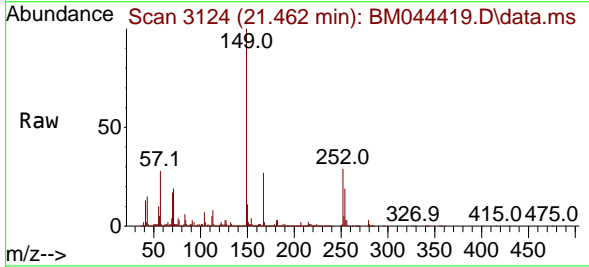


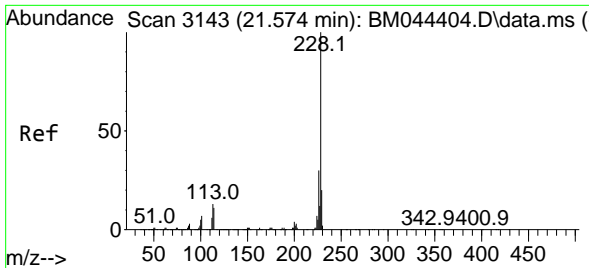
Tgt Ion:228 Resp: 3390345
 Ion Ratio Lower Upper
 228 100
 229 19.7 15.4 23.0
 226 26.7 21.2 31.8



#86
 Bis(2-ethylhexyl)phthalate
 Concen: 59.727 ng/ul
 RT: 21.462 min Scan# 3124
 Delta R.T. 0.000 min
 Lab File: BM044419.D
 Acq: 29 Feb 2024 00:13

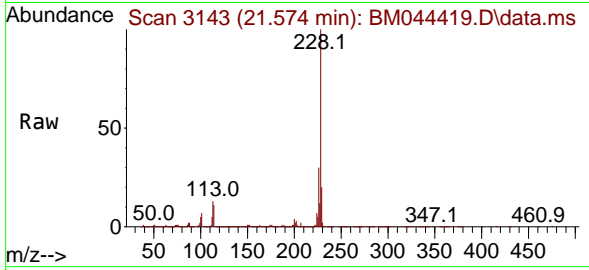
Tgt Ion:149 Resp: 2698217
 Ion Ratio Lower Upper
 149 100
 167 27.0 22.1 33.1
 279 3.2 2.4 3.6



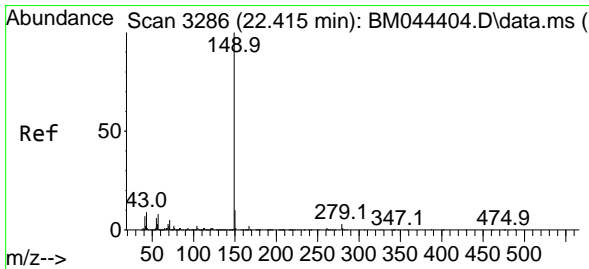
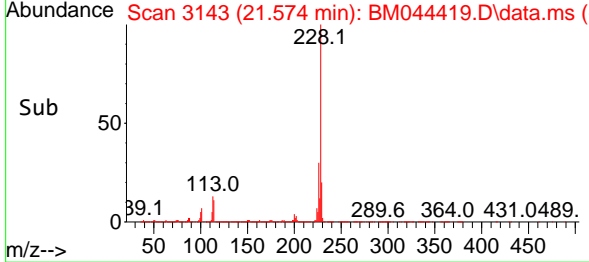
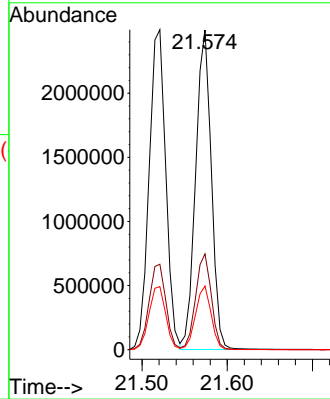


#87
 Chrysene
 Concen: 52.303 ng/u1
 RT: 21.574 min Scan# 3143
 Delta R.T. 0.006 min
 Lab File: BM044419.D
 Acq: 29 Feb 2024 00:13

Instrument :
 BNA_M
 ClientSampleId :
 SLCS335

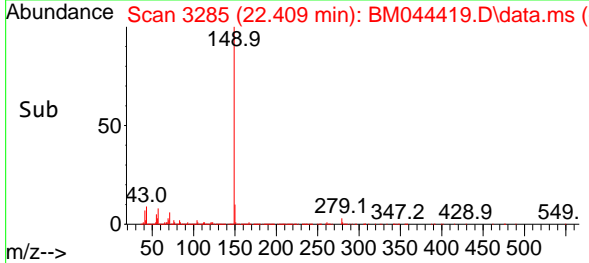
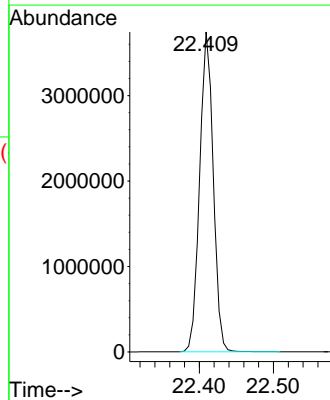
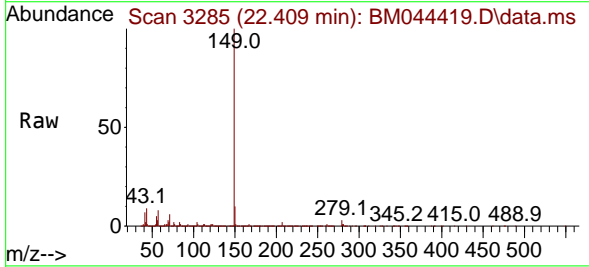


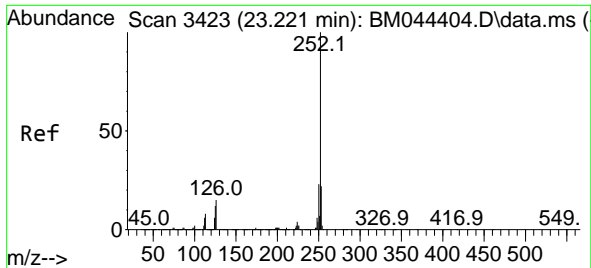
Tgt Ion:228 Resp: 3183363
 Ion Ratio Lower Upper
 228 100
 226 30.0 23.8 35.6
 229 19.9 16.0 24.0



#89
 Di-n-octyl phthalate
 Concen: 59.988 ng/u1
 RT: 22.409 min Scan# 3285
 Delta R.T. 0.006 min
 Lab File: BM044419.D
 Acq: 29 Feb 2024 00:13

Tgt Ion:149 Resp: 4759849



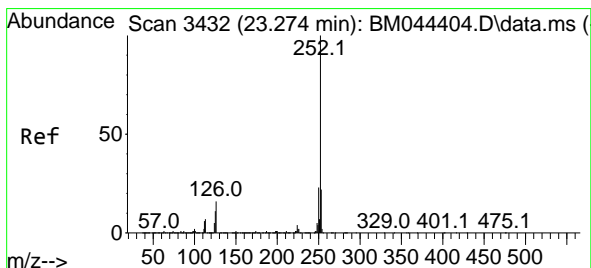
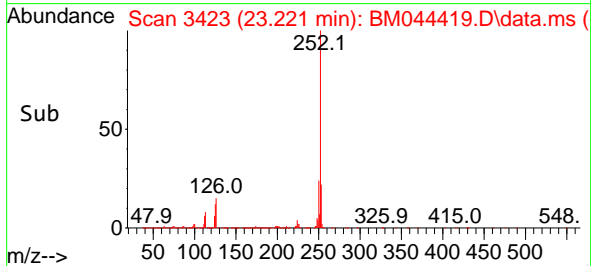
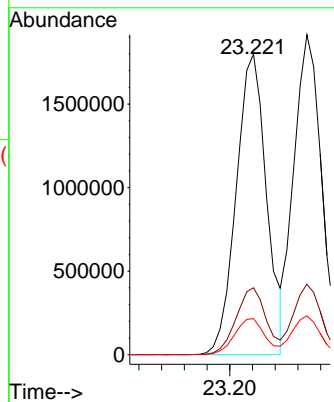
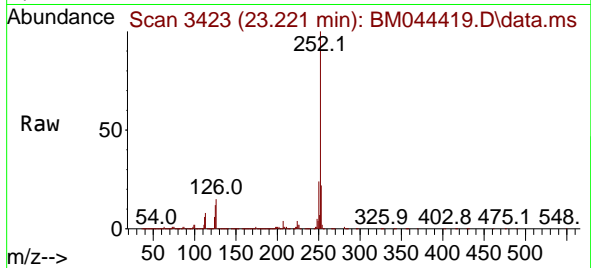


#90
 Benzo(b)fluoranthene
 Concen: 56.271 ng/ul
 RT: 23.221 min Scan# 3423
 Delta R.T. 0.012 min
 Lab File: BM044419.D
 Acq: 29 Feb 2024 00:13

Instrument :
 BNA_M
 ClientSampleId :
 SLCS335

Tgt Ion:252 Resp: 3340852

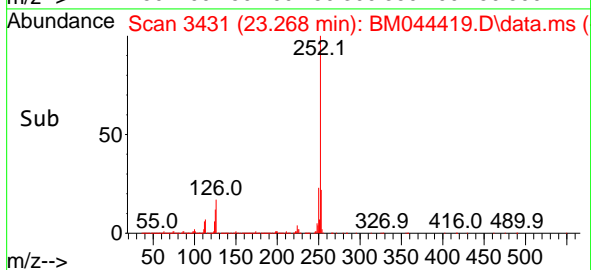
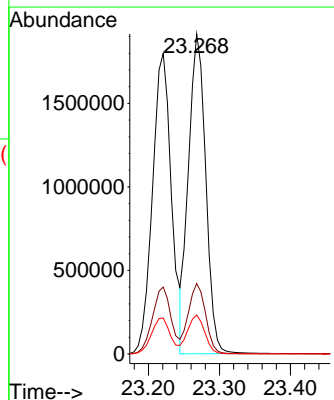
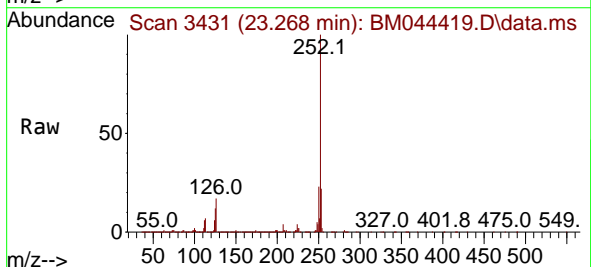
Ion	Ratio	Lower	Upper
252	100		
253	22.3	17.6	26.4
125	12.0	9.8	14.8

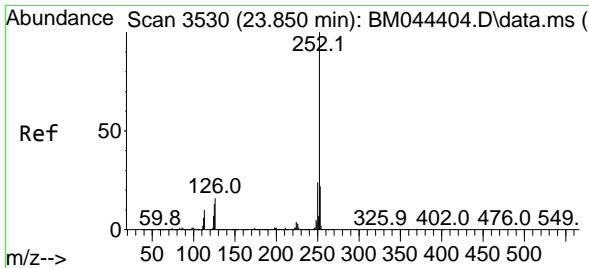


#91
 Benzo(k)fluoranthene
 Concen: 53.105 ng/ul
 RT: 23.268 min Scan# 3431
 Delta R.T. 0.006 min
 Lab File: BM044419.D
 Acq: 29 Feb 2024 00:13

Tgt Ion:252 Resp: 3238270

Ion	Ratio	Lower	Upper
252	100		
253	22.0	17.4	26.0
125	12.2	9.4	14.2



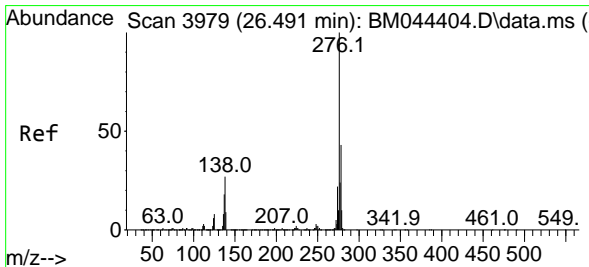
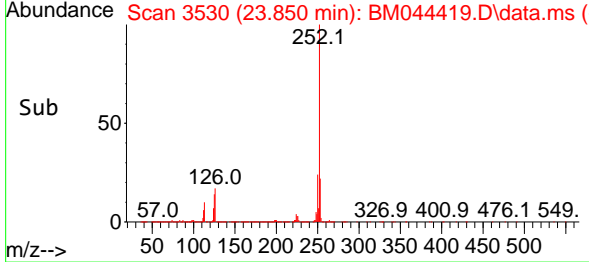
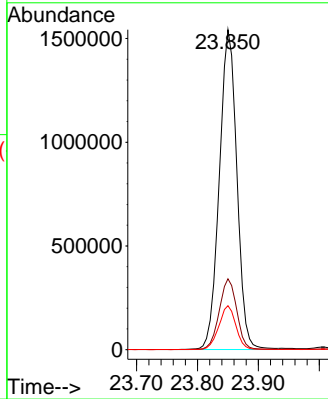
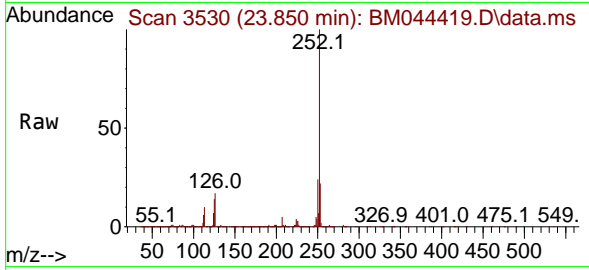


#93
 Benzo(a)pyrene
 Concen: 53.940 ng/u1
 RT: 23.850 min Scan# 3530
 Delta R.T. 0.012 min
 Lab File: BM044419.D
 Acq: 29 Feb 2024 00:13

Instrument : BNA_M
 ClientSampleId : SLCS335

Tgt Ion:252 Resp: 3087618

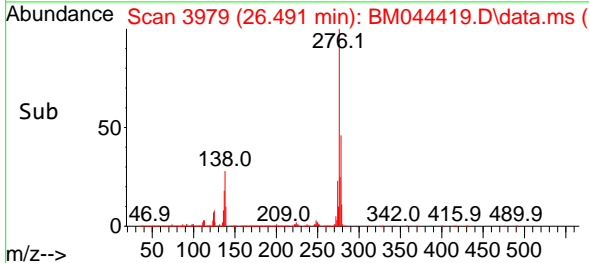
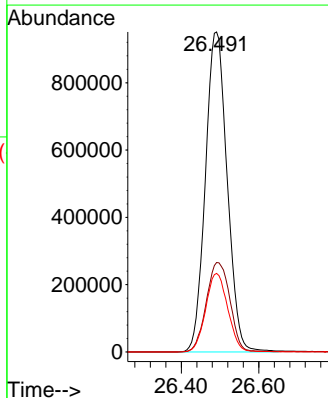
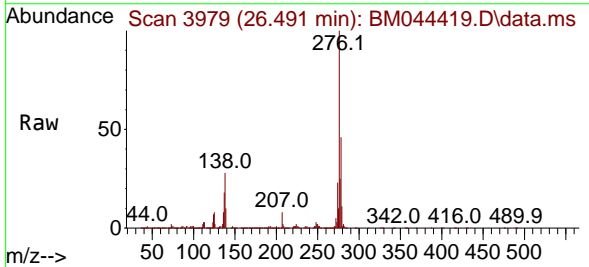
Ion	Ratio	Lower	Upper
252	100		
253	22.1	17.4	26.2
125	13.7	10.8	16.2

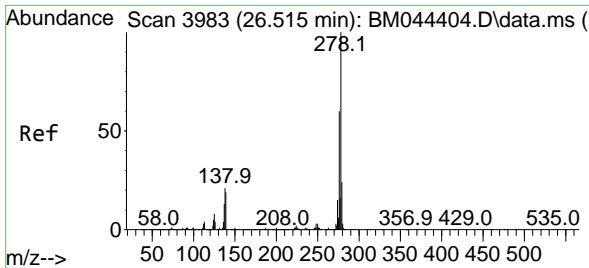


#94
 Indeno(1,2,3-cd)pyrene
 Concen: 53.619 ng/u1
 RT: 26.491 min Scan# 3979
 Delta R.T. 0.024 min
 Lab File: BM044419.D
 Acq: 29 Feb 2024 00:13

Tgt Ion:276 Resp: 3711645

Ion	Ratio	Lower	Upper
276	100		
138	28.0	22.1	33.1
277	24.6	19.9	29.9



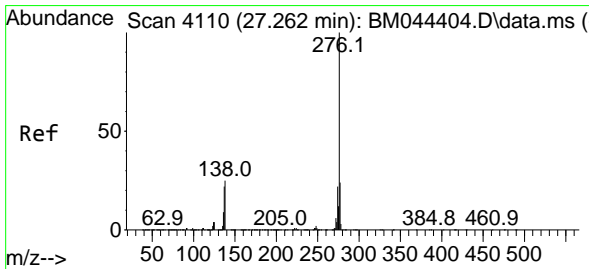
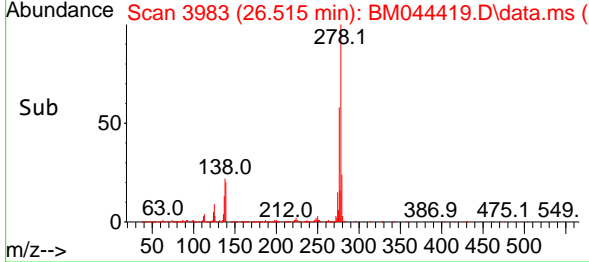
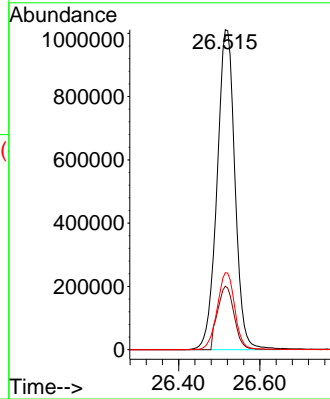
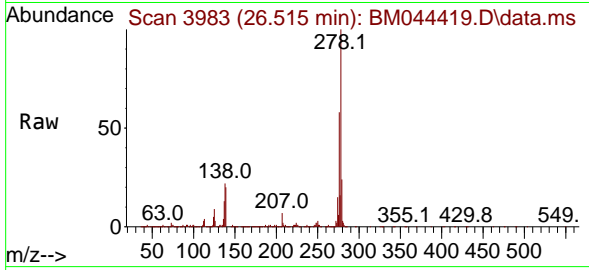


#95
 Dibenzo(a,h)anthracene
 Concen: 53.670 ng/ul
 RT: 26.515 min Scan# 3983
 Delta R.T. 0.018 min
 Lab File: BM044419.D
 Acq: 29 Feb 2024 00:13

Instrument :
 BNA_M
 ClientSampleId :
 SLCS335

Tgt Ion:278 Resp: 3104640

Ion	Ratio	Lower	Upper
278	100		
139	19.8	14.9	22.3
279	24.1	19.5	29.3



#96
 Benzo(g,h,i)perylene
 Concen: 53.112 ng/ul
 RT: 27.268 min Scan# 4111
 Delta R.T. 0.029 min
 Lab File: BM044419.D
 Acq: 29 Feb 2024 00:13

Tgt Ion:276 Resp: 2973987

Ion	Ratio	Lower	Upper
276	100		
138	25.7	21.6	32.4
277	24.2	18.5	27.7

