

Data Path : Z:\HPCHEM1\BNA_M\DATA\BM030117\
 Data File : BM009047.D
 Acq On : 01 Mar 2017 12:49
 Operator : SJ/MA
 Sample : I1988-03
 Misc :
 ALS Vial : 5 Sample Multiplier: 1

Instrument :
 BNA_M
 ClientSampleId :
 DABR8

Quant Time: Mar 02 03:23:09 2017
 Quant Method : Z:\HPCHEM1\BNA_M\METHODS\SOM02.2-EPA-BM022317.M
 Quant Title : SVOA CALIBRATION
 QLast Update : Thu Mar 02 03:22:17 2017
 Response via : Initial Calibration

Internal Standards	R.T.	QIon	Response	Conc	Units	Dev(Min)
1) 1,4-Dichlorobenzene-d4	7.90	152	174030	20.00	ng/ul	0.00
18) Naphthalene-d8	10.70	136	670998	20.00	ng/ul	0.00
35) Acenaphthene-d10	14.53	164	409771	20.00	ng/ul	0.00
61) Phenanthrene-d10	17.28	188	980460	20.00	ng/ul	0.00
75) Chrysene-d12	21.45	240	1261855	20.00	ng/ul	0.00
83) Perylene-d12	23.80	264	1255045	20.00	ng/ul	0.00

System Monitoring Compounds

3) 1,4-Dioxane-d8	3.36	96	15944	3.68	ng/uL	0.00
5) Phenol-d5	7.05	99	309748	19.64	ng/ul	0.00
7) Bis-(2-Chloroethyl)ether-d	7.23	67	233624	20.68	ng/ul	0.00
9) 2-Chlorophenol-d4	7.42	132	212090	20.18	ng/ul	0.00
13) 4-Methylphenol-d8	8.59	113	221782	19.15	ng/ul	0.00
19) Nitrobenzene-d5	9.06	128	99163	20.65	ng/ul	0.00
22) 2-Nitrophenol-d4	9.78	143	106004	20.46	ng/ul	0.00
26) 2,4-Dichlorophenol-d3	10.31	165	219400	20.17	ng/ul	0.00
29) 4-Chloroaniline-d4	10.83	131	265379	23.14	ng/ul	0.00
43) Dimethylphthalate-d6	13.94	166	696680	25.25	ng/ul	0.00
46) Acenaphthylene-d8	14.23	160	847654	25.02	ng/ul	0.00
51) 4-Nitrophenol-d4	14.72	143	97789	20.30	ng/ul	0.00
57) Fluorene-d10	15.53	176	655603	25.45	ng/ul	0.00
62) 4,6-Dinitro-2-methylphenol	15.64	200	95004	16.10	ng/ul	0.00
70) Anthracene-d10	17.38	188	1053675	22.70	ng/ul	0.00
76) Pyrene-d10	19.67	212	1292638	23.50	ng/ul	0.00
87) Benzo(a)pyrene-d12	23.64	264	1351888	23.73	ng/ul	0.00

Target Compounds

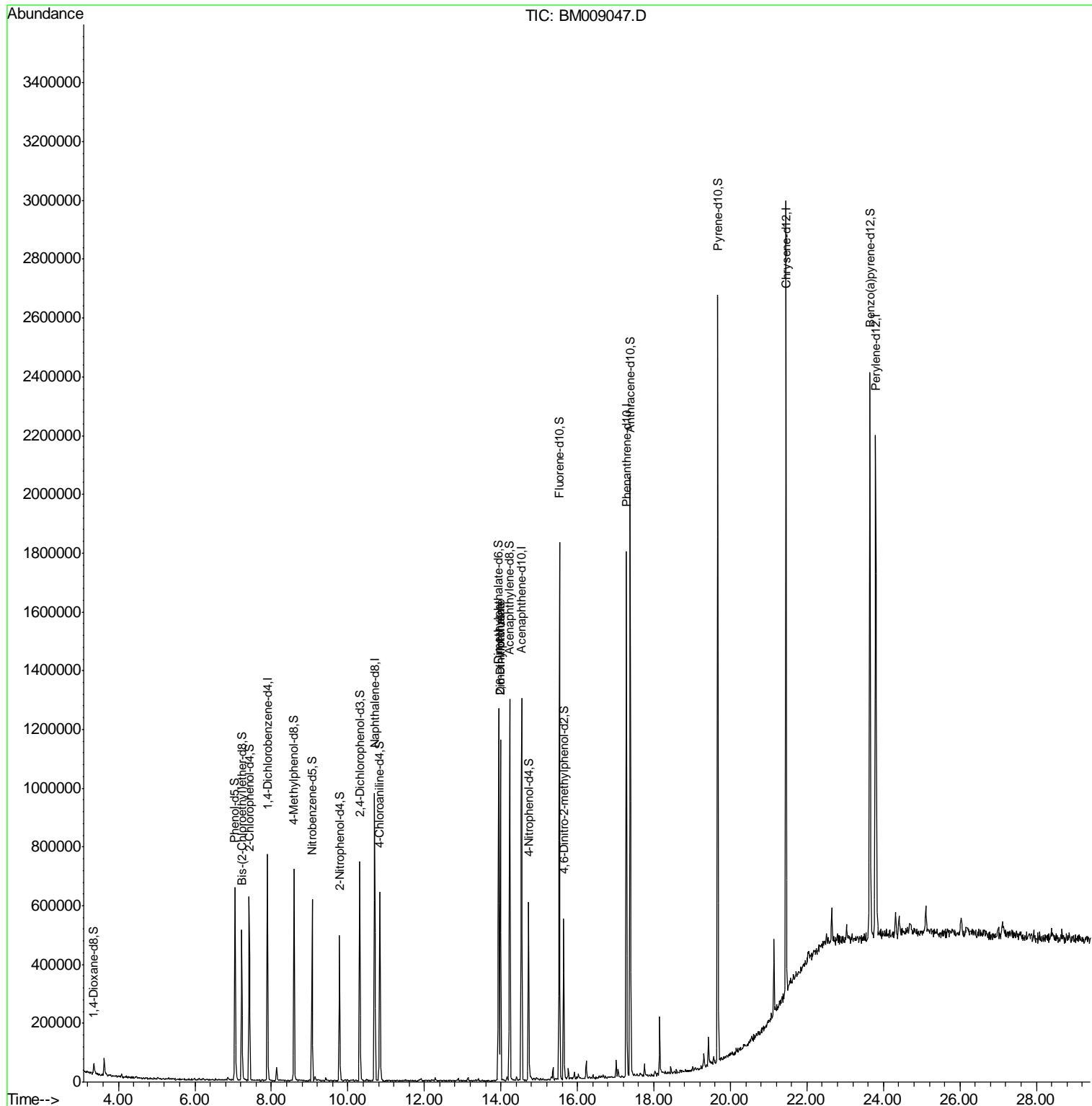
					Qvalue
44) Dimethylphthalate	13.99	163	593843	21.51 ng/ul#	98
45) 2,6-Dinitrotoluene	13.99	165	5453	1.04 ng/ul#	31

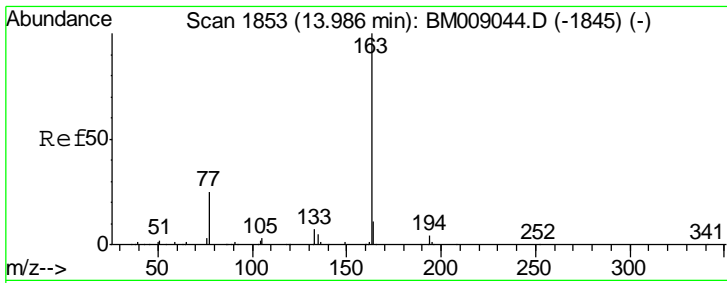
(#) = qualifier out of range (m) = manual integration (+) = signals summed

Data Path : Z:\HPCHEM1\BNA_M\DATA\BM030117\
 Data File : BM009047.D
 Acq On : 01 Mar 2017 12:49
 Operator : SJ/MA
 Sample : I1988-03
 Misc :
 ALS Vial : 5 Sample Multiplier: 1

Instrument :
 BNA_M
 ClientSampleId :
 DABR8

Quant Time: Mar 02 03:23:09 2017
 Quant Method : Z:\HPCHEM1\BNA_M\METHODS\SOM02.2-EPA-BM022317.M
 Quant Title : SVOA CALIBRATION
 QLast Update : Thu Mar 02 03:22:17 2017
 Response via : Initial Calibration

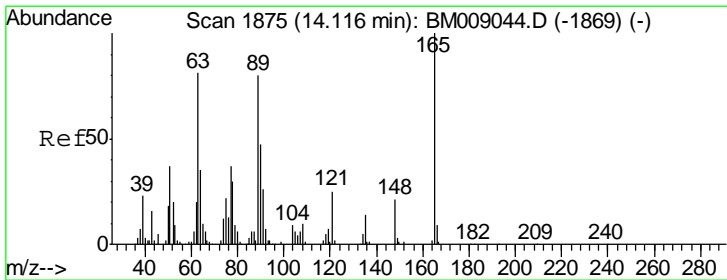
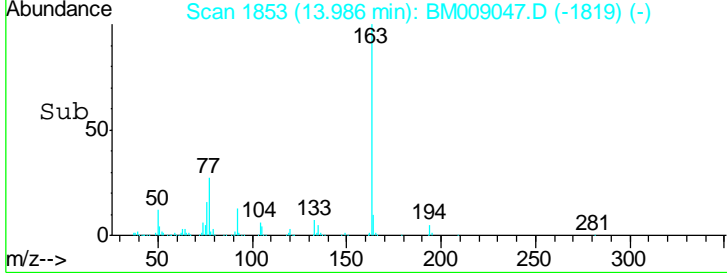
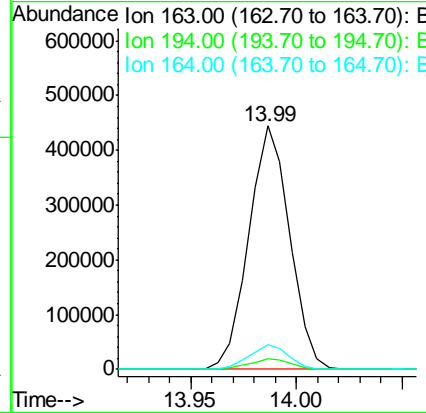
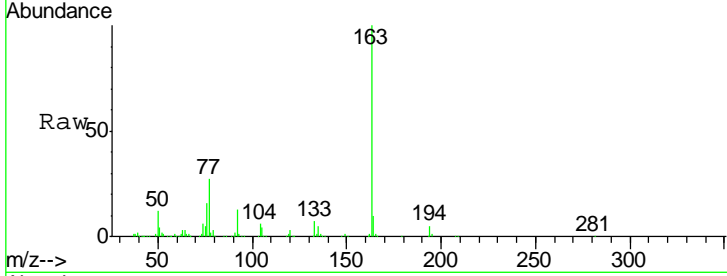




#44
 Dimethylphthalate
 Concen: 21.51 ng/ul
 RT: 13.99 min Scan# 1853
 Delta R.T. -0.00 min
 Lab File: BM009047.D
 Acq: 01 Mar 2017 12:49

Instrument :
 BNA_M
 ClientSampleId :
 DABR8

Tgt Ion	Resp	Lower	Upper
163	100		
194	4.6	3.0	4.6#
164	10.1	8.6	12.8



#45
 2,6-Dinitrotoluene
 Concen: 1.04 ng/ul
 RT: 13.99 min Scan# 1853
 Delta R.T. -0.13 min
 Lab File: BM009047.D
 Acq: 01 Mar 2017 12:49

Tgt Ion	Resp	Lower	Upper
165	100		
89	21.7	89.4	134.0#
121	25.6	21.6	32.4

