

Data Path : Z:\HPCHEM1\BNA M\DATA\BM030118\
 Data File : BM014439.D
 Acq On : 01 Mar 2018 18:58
 Operator : SJ/JU
 Sample : J1646-07
 Misc :
 ALS Vial : 3 Sample Multiplier: 1

Instrument :
 BNA_M
 ClientSampled :
 BE5X1

Manual Integrations
 APPROVED

Sohil
 3/2/2018 3:31:54 PM

Quant Time: Mar 08 17:07:35 2018
 Quant Method : Z:\HPCHEM1\BNA M\METHODS\SOM-EPA-BM021418.M
 Quant Title : SVOA CALIBRATION
 QLast Update : Thu Mar 01 03:03:26 2018
 Response via : Initial Calibration

Internal Standards	R.T.	QIon	Response	Conc	Units	Dev(Min)
1) 1,4-Dichlorobenzene-d4	7.51	152	47091	20.00	ng/ul	0.00
18) Naphthalene-d8	10.28	136	235721	20.00	ng/ul	0.00
35) Acenaphthene-d10	14.17	164	163094	20.00	ng/ul	0.00
61) Phenanthrene-d10	16.93	188	436677	20.00	ng/ul	0.00
75) Chrysene-d12	21.15	240	641794	20.00	ng/ul	0.00
83) Perylene-d12	23.33	264	586004	20.00	ng/ul	0.00

System Monitoring Compounds

3) 1,4-Dioxane-d8	3.09	96	3476m	3.16	ng/uL	0.00
5) Phenol-d5	6.72	99	91063	22.88	ng/ul	0.00
7) Bis-(2-Chloroethyl)ether-d	6.86	67	50711	21.05	ng/ul	0.00
9) 2-Chlorophenol-d4	7.05	132	69369	22.73	ng/ul	0.00
13) 4-Methylphenol-d8	8.25	113	69389	19.92	ng/ul	0.00
19) Nitrobenzene-d5	8.67	128	38007	21.82	ng/ul	0.00
22) 2-Nitrophenol-d4	9.39	143	41638	23.09	ng/ul	0.00
26) 2,4-Dichlorophenol-d3	9.94	165	79168	21.20	ng/ul	0.01
29) 4-Chloroaniline-d4	10.46	131	52836	14.36	ng/ul	0.02
43) Dimethylphthalate-d6	13.59	166	307242	22.81	ng/ul	0.00
46) Acenaphthylene-d8	13.86	160	390001	23.48	ng/ul	0.00
51) 4-Nitrophenol-d4	14.47	143	36063	19.39	ng/ul	0.04
57) Fluorene-d10	15.17	176	283846	23.52	ng/ul	0.00
62) 4,6-Dinitro-2-methylphenol	15.35	200	37628	14.36	ng/ul	0.01
70) Anthracene-d10	17.03	188	492699	23.39	ng/ul	0.00
76) Pyrene-d10	19.34	212	639528	19.32	ng/ul	0.00
87) Benzo(a)pyrene-d12	23.20	264	649744	22.78	ng/ul	0.01

Target Compounds

Target Compounds	R.T.	QIon	Response	Conc	Units	Ovalue
6) Phenol	6.75	94	12503	2.994	ng/ul#	81
28) Naphthalene	10.33	128	21619	1.786	ng/ul#	89
44) Dimethylphthalate	13.64	163	102221	7.697	ng/ul#	95
47) Acenaphthylene	13.89	152	69646	4.437	ng/ul	96
49) Acenaphthene	14.23	153	43121	3.901	ng/ul	86
53) Dibenzofuran	14.59	168	34260	2.067	ng/ul	97
58) Fluorene	15.23	166	59060	4.128	ng/ul#	97
69) Phenanthrene	16.97	178	1528673	60.759	ng/ul	98
71) Anthracene	17.07	178	301392	11.912	ng/ul	97
72) Carbazole	17.36	167	101582	4.774	ng/ul	98
74) Fluoranthene	19.01	202	2898927	96.441	ng/ul#	92
77) Pyrene	19.37	202	3068974	71.954	ng/ul#	91
78) Butylbenzylphthalate	20.29	149	37924	2.150	ng/ul#	73
80) Benzo(a)anthracene	21.14	228	1684864	42.064	ng/ul	99
81) Bis(2-ethylhexyl)phthalate	21.07	149	3393439	134.356	ng/ul#	96
82) Chrysene	21.19	228	1631058	43.651	ng/ul	97
85) Benzo(b)fluoranthene	22.69	252	1974804	50.329	ng/ul#	97
86) Benzo(k)fluoranthene	22.73	252	551601m	14.786	ng/ul	
88) Benzo(a)pyrene	23.24	252	1395644	39.804	ng/ul#	98
89) Indeno(1,2,3-cd)pyrene	25.50	276	791024	23.249	ng/ul	98
90) Dibenz(a,h)anthracene	25.50	278	208402	7.371	ng/ul#	89
91) Benzo(a,h,i)perylene	26.17	276	604713	21.939	ng/ul	99

Data Path : Z:\HPCHEM1\BNA M\DATA\BM030118\
 Data File : BM014439.D
 Acq On : 01 Mar 2018 18:58
 Operator : SJ/JU
 Sample : J1646-07
 Misc :
 ALS Vial : 3 Sample Multiplier: 1

Instrument :
 BNA_M
ClientSampleId :
 BE5X1

Manual Integrations
APPROVED
 Sohil
 3/2/2018 3:31:54 PM

Quant Time: Mar 08 17:07:35 2018
 Quant Method : Z:\HPCHEM1\BNA M\METHODS\SOM-EPA-BM021418.M
 Quant Title : SVOA CALIBRATION
 QLast Update : Thu Mar 01 03:03:26 2018
 Response via : Initial Calibration

Internal Standards R.T. QIon Response Conc Units Dev(Min)

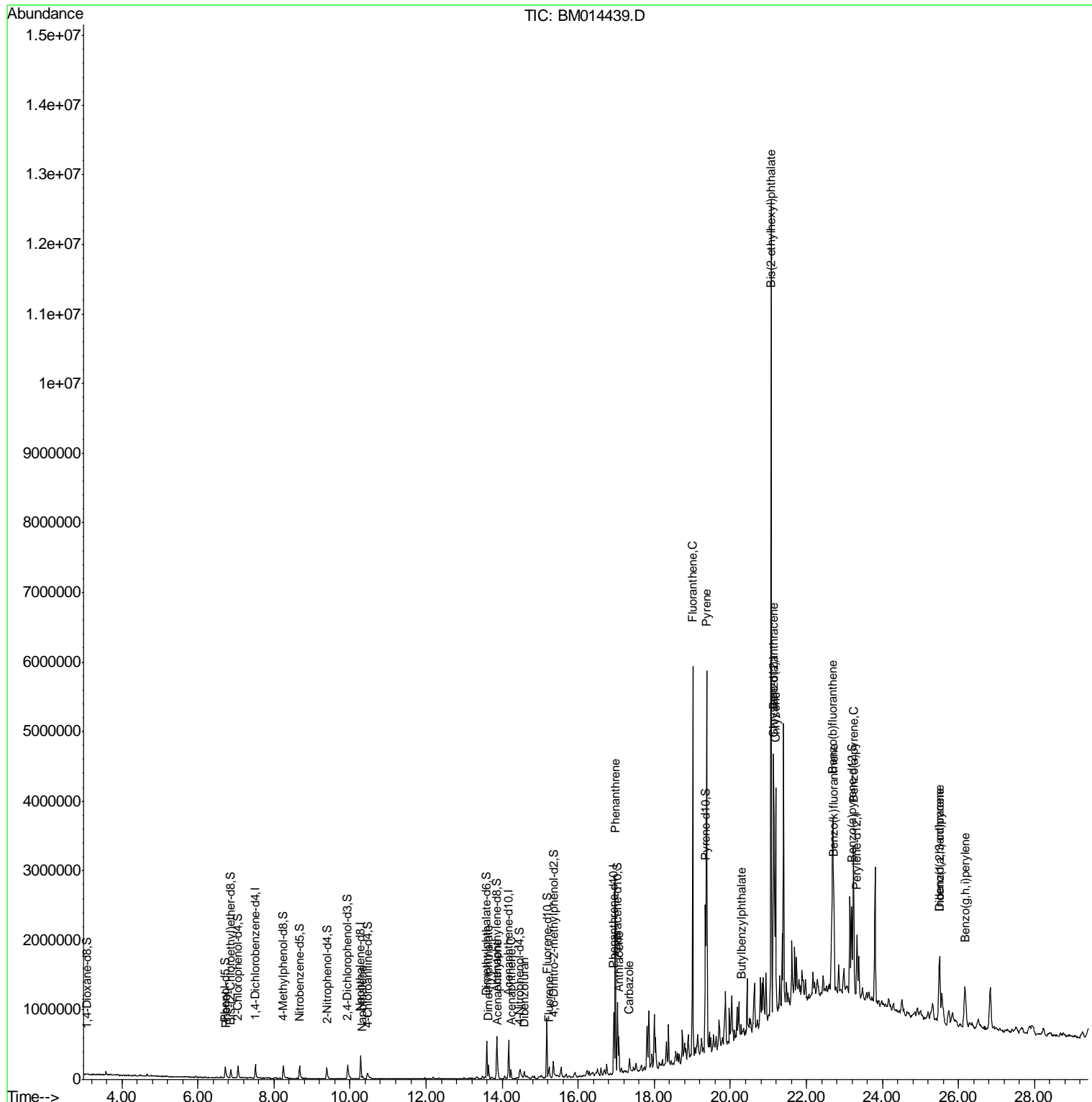
(#) = qualifier out of range (m) = manual integration (+) = signals summed

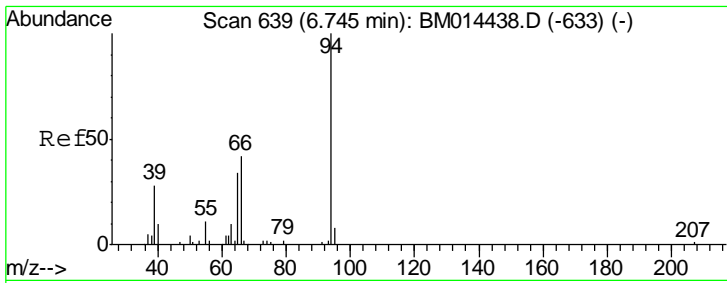
Data Path : Z:\HPCHEM1\BNA M\DATA\BM030118\
 Data File : BM014439.D
 Acq On : 01 Mar 2018 18:58
 Operator : SJ/JU
 Sample : J1646-07
 Misc :
 ALS Vial : 3 Sample Multiplier: 1

Instrument :
 BNA_M
 Client Sampled :
 BE5X1

Manual Integrations
APPROVED
 Sohil
 3/2/2018 3:31:54 PM

Quant Time: Mar 08 17:07:35 2018
 Quant Method : Z:\HPCHEM1\BNA M\METHODS\SOM-EPA-BM021418.M
 Quant Title : SVOA CALIBRATION
 QLast Update : Thu Mar 01 03:03:26 2018
 Response via : Initial Calibration





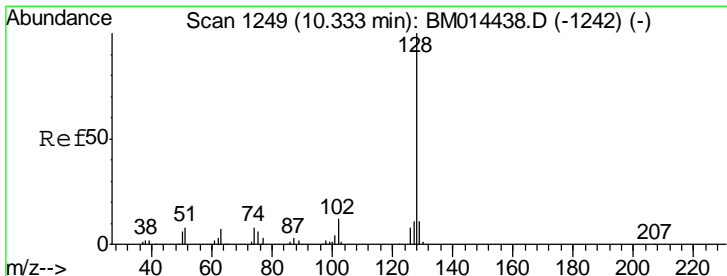
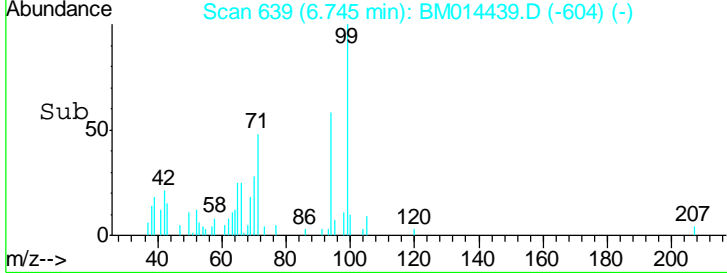
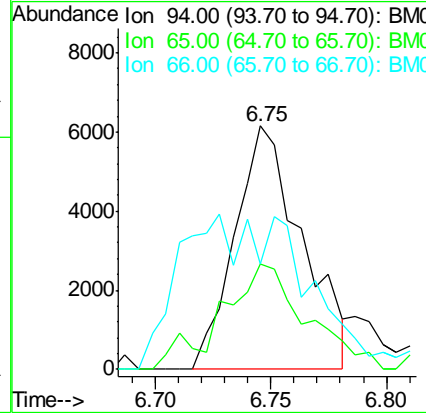
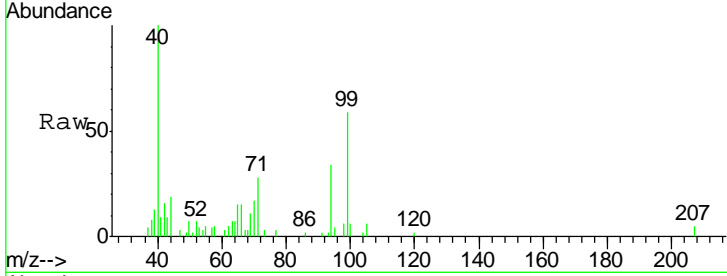
#6
 Phenol
 Concen: 2.994 ng/ul
 RT: 6.75 min Scan# 639
 Delta R.T. 0.01 min
 Lab File: BM014439.D
 Acq: 01 Mar 2018 18:58

Instrument :
 BNA_M
ClientSampled :
 BE5X1

Tgt Ion	Resp	Lower	Upper
94	12503		
65	43.4	28.2	42.4#
66	43.0	47.2	70.8#

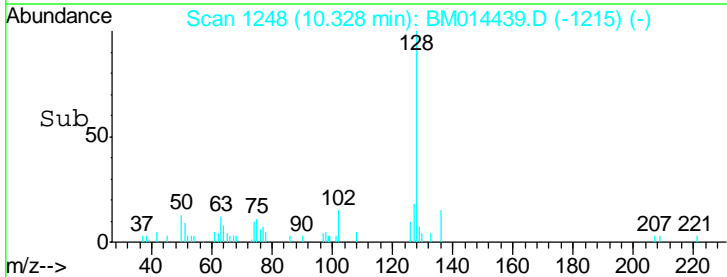
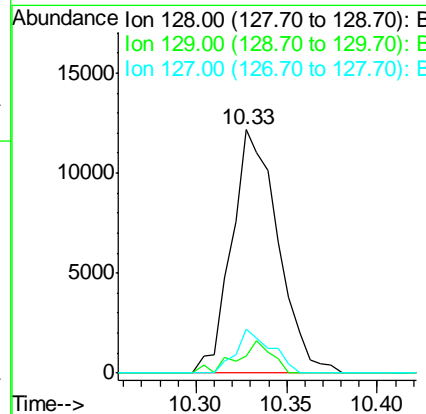
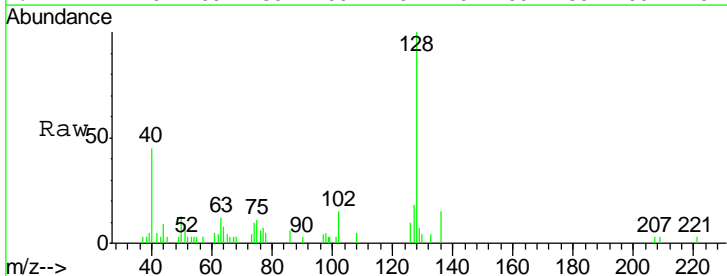
Manual Integrations
APPROVED

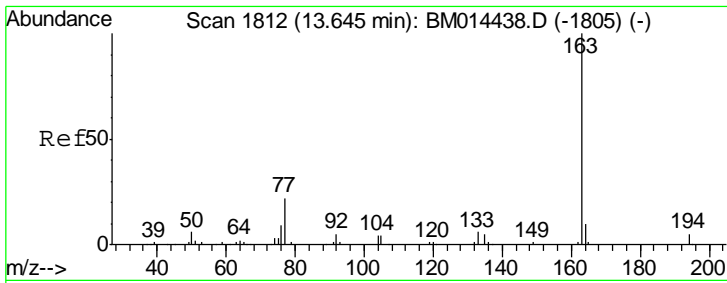
Sohil
 3/2/2018 3:31:54 PM



#28
 Naphthalene
 Concen: 1.786 ng/ul
 RT: 10.33 min Scan# 1248
 Delta R.T. -0.01 min
 Lab File: BM014439.D
 Acq: 01 Mar 2018 18:58

Tgt Ion	Resp	Lower	Upper
128	21619		
129	7.2	8.8	13.2#
127	17.9	10.6	16.0#





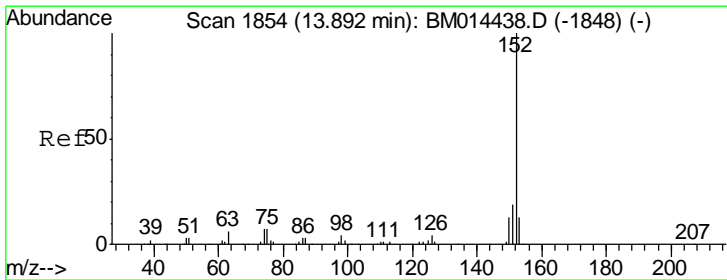
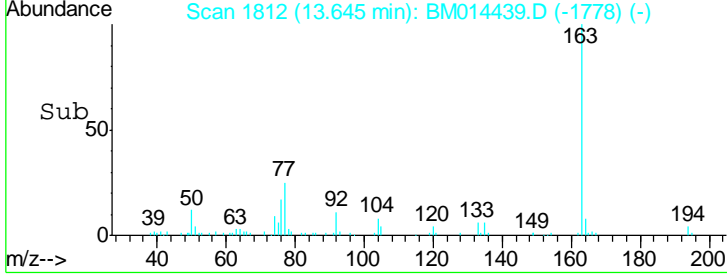
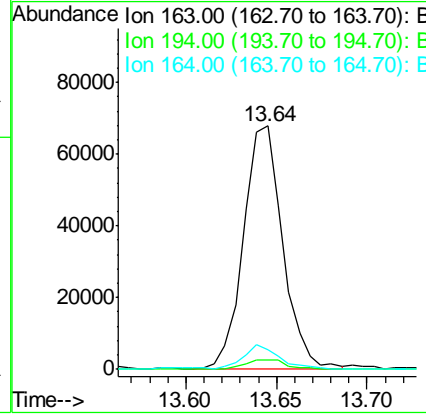
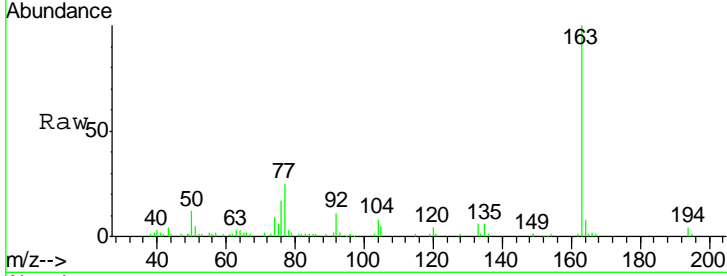
#44
 Dimethylphthalate
 Concen: 7.697 ng/ul
 RT: 13.64 min Scan# 1812
 Delta R.T. 0.00 min
 Lab File: BM014439.D
 Acq: 01 Mar 2018 18:58

Instrument :
 BNA_M
ClientSampled :
 BE5X1

Tgt Ion	Resp	Lower	Upper
163	102221		
194	3.8	3.5	5.3
164	7.9	8.2	12.4#

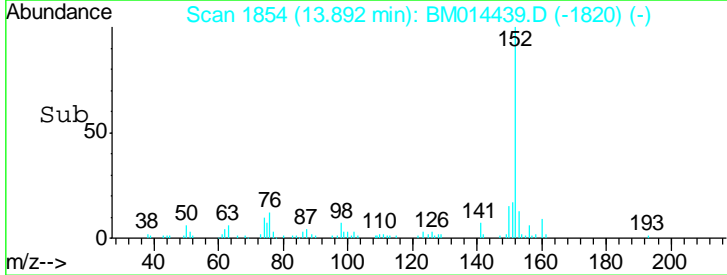
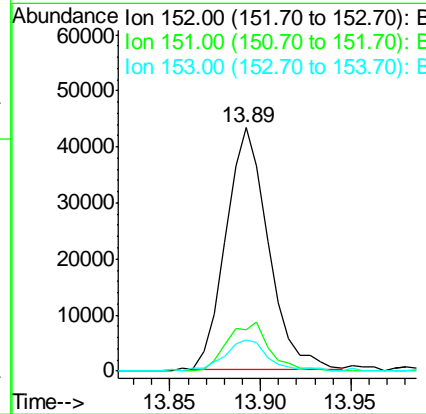
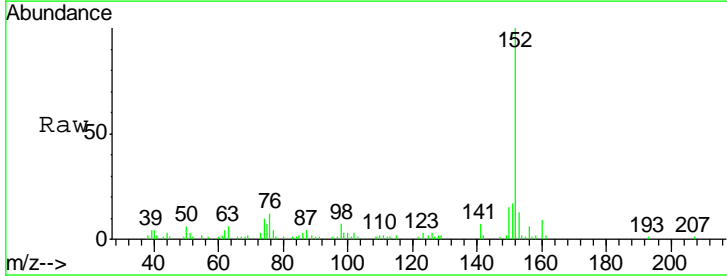
Manual Integrations
APPROVED

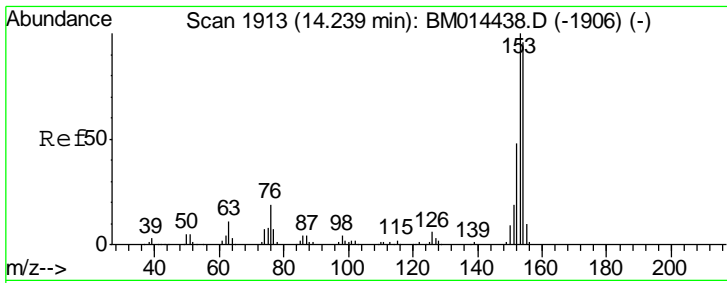
Sohil
 3/2/2018 3:31:54 PM



#47
 Acenaphthylene
 Concen: 4.437 ng/ul
 RT: 13.89 min Scan# 1854
 Delta R.T. 0.00 min
 Lab File: BM014439.D
 Acq: 01 Mar 2018 18:58

Tgt Ion	Resp	Lower	Upper
152	69646		
151	17.3	16.3	24.5
153	12.6	10.2	15.4



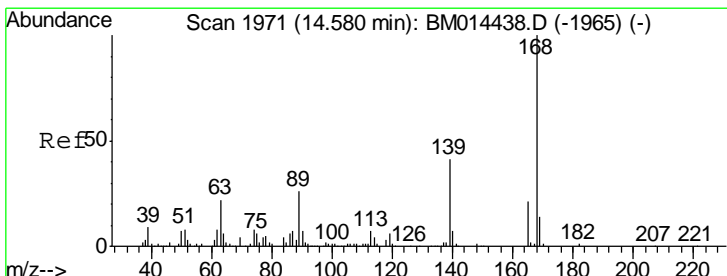
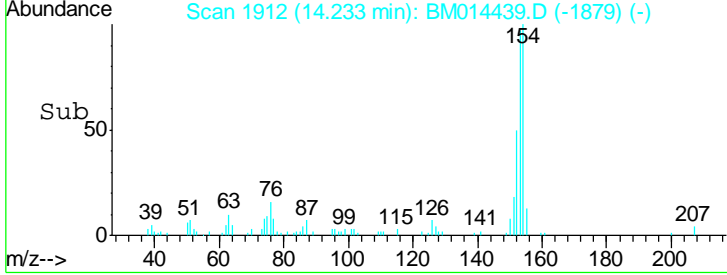
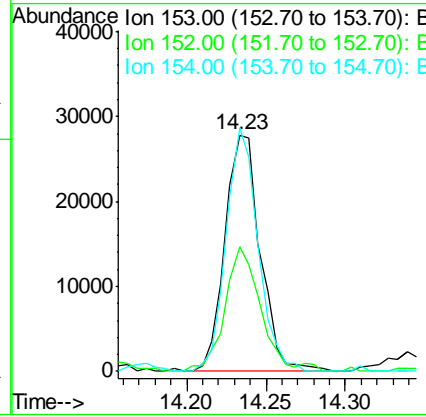
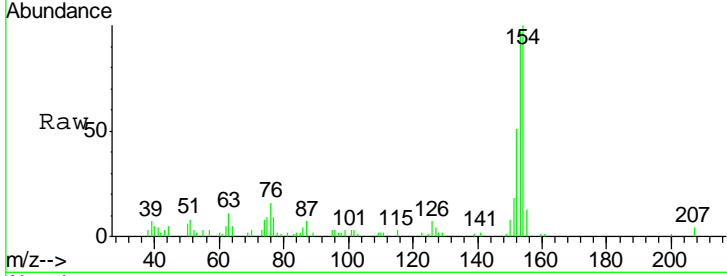


#49
 Acenaphthene
 Concen: 3.901 ng/ul
 RT: 14.23 min Scan# 1912
 Delta R.T. -0.01 min
 Lab File: BM014439.D
 Acq: 01 Mar 2018 18:58

Instrument :
 BNA_M
Client Sampled :
 BE5X1

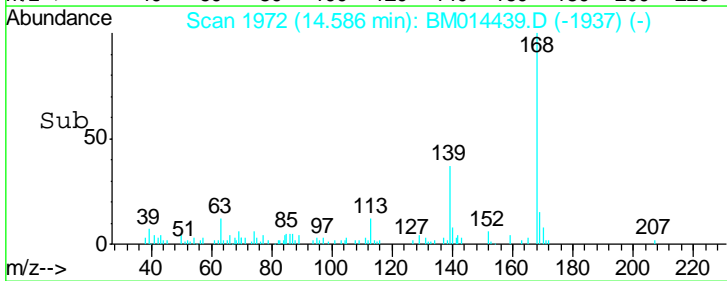
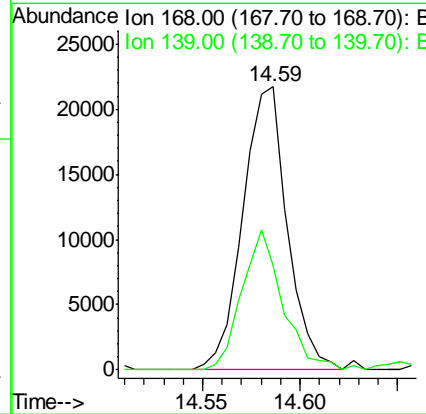
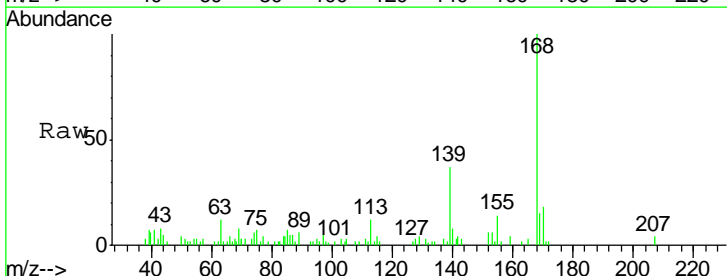
Tgt Ion	Resp	Lower	Upper
153	43121		
152	53.0	37.6	56.4
154	103.1	70.4	105.6

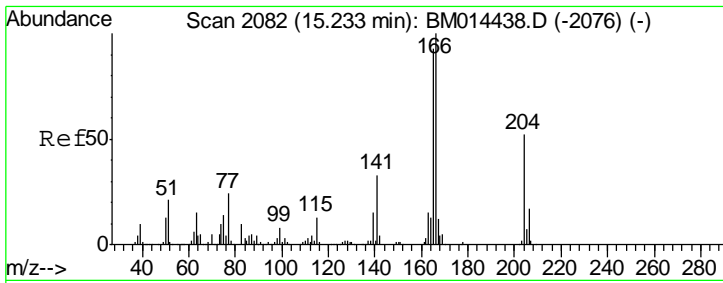
Manual Integrations
APPROVED
 Sohil
 3/2/2018 3:31:54 PM



#53
 Dibenzofuran
 Concen: 2.067 ng/ul
 RT: 14.59 min Scan# 1972
 Delta R.T. 0.01 min
 Lab File: BM014439.D
 Acq: 01 Mar 2018 18:58

Tgt Ion	Resp	Lower	Upper
168	34260		
139	36.9	30.8	46.2





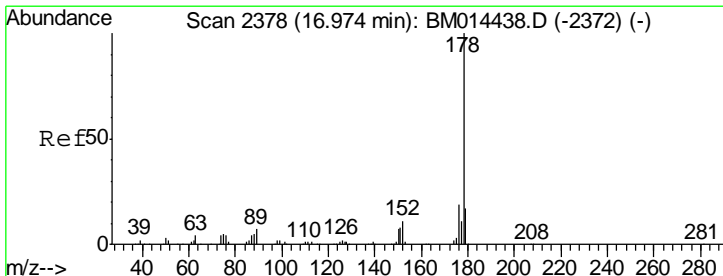
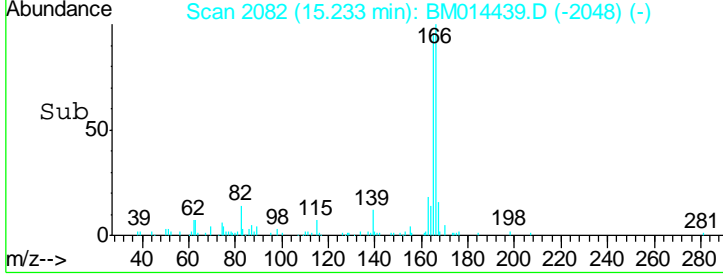
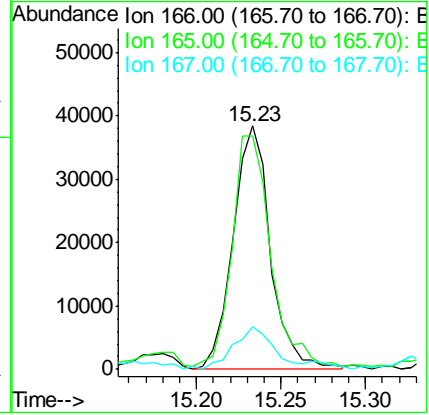
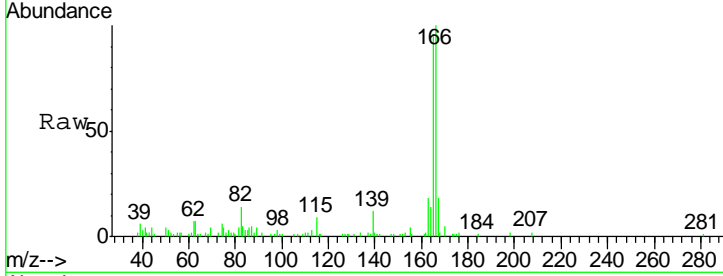
#58
 Fluorene
 Concen: 4.128 ng/ul
 RT: 15.23 min Scan# 2082
 Delta R.T. 0.00 min
 Lab File: BM014439.D
 Acq: 01 Mar 2018 18:58

Instrument :
 BNA_M
ClientSampled :
 BE5X1

Tgt Ion	Resp	Lower	Upper
166	59060		
165	95.8	77.9	116.9
167	17.5	10.6	16.0

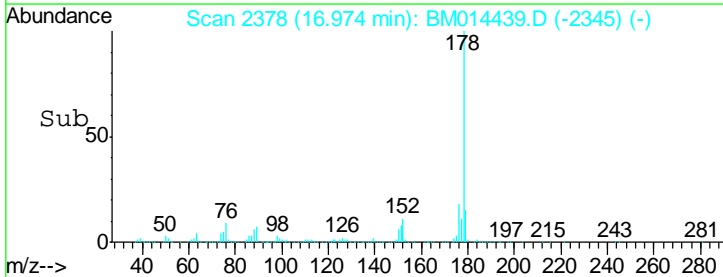
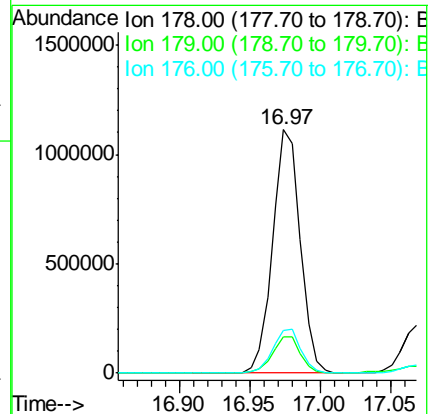
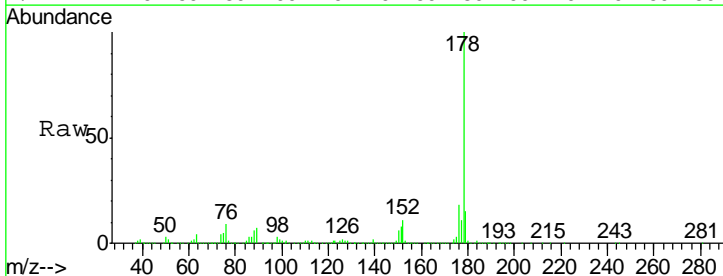
Manual Integrations
APPROVED

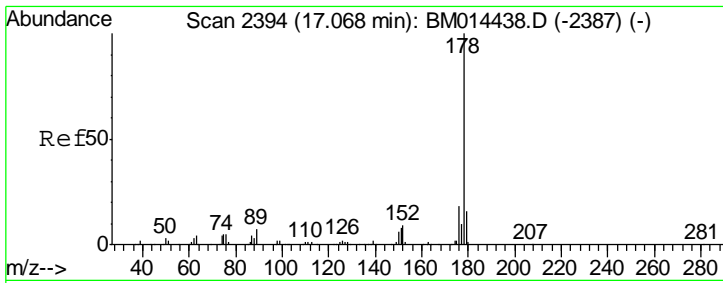
Sohil
 3/2/2018 3:31:54 PM



#69
 Phenanthrene
 Concen: 60.759 ng/ul
 RT: 16.97 min Scan# 2378
 Delta R.T. -0.01 min
 Lab File: BM014439.D
 Acq: 01 Mar 2018 18:58

Tgt Ion	Resp	Lower	Upper
178	1528673		
179	14.8	12.6	19.0
176	17.7	14.9	22.3





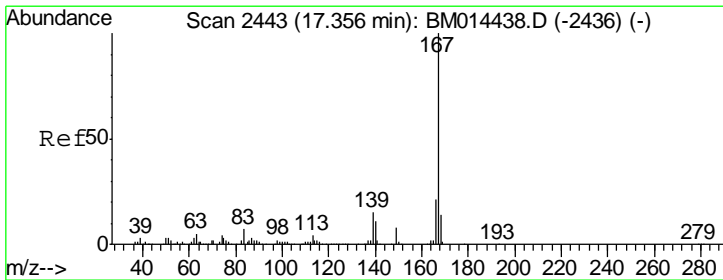
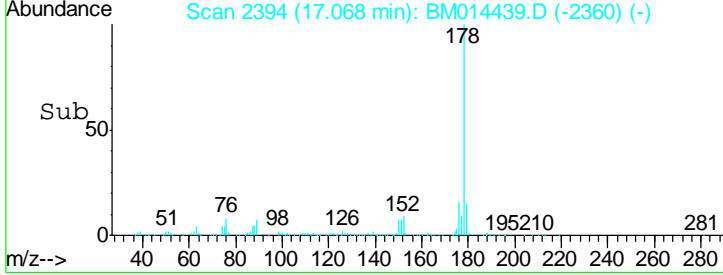
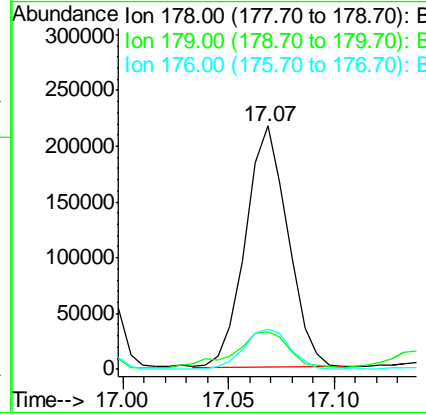
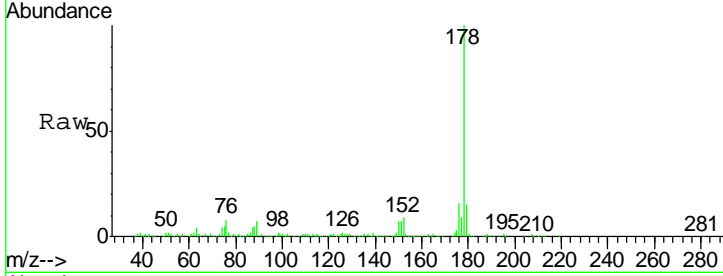
#71
 Anthracene
 Concen: 11.912 ng/ul
 RT: 17.07 min Scan# 2394
 Delta R.T. 0.00 min
 Lab File: BM014439.D
 Acq: 01 Mar 2018 18:58

Instrument :
 BNA_M
 Client Sampled :
 BE5X1

Tgt Ion	Resp	Lower	Upper
178	301392		
179	15.4	11.7	17.5
176	16.3	14.6	21.8

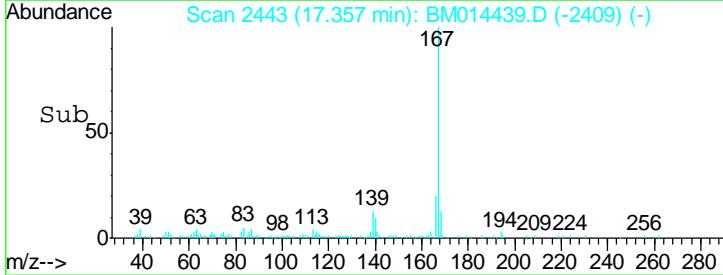
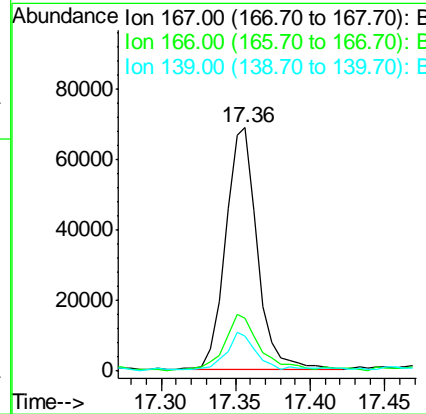
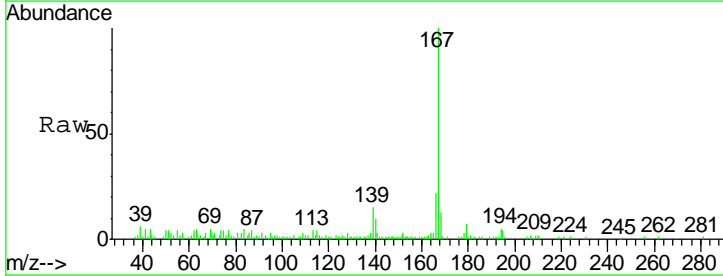
Manual Integrations
 APPROVED

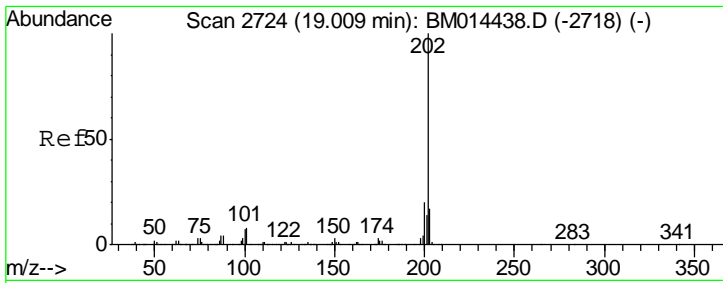
Sohil
 3/2/2018 3:31:54 PM



#72
 Carbazole
 Concen: 4.774 ng/ul
 RT: 17.36 min Scan# 2443
 Delta R.T. 0.00 min
 Lab File: BM014439.D
 Acq: 01 Mar 2018 18:58

Tgt Ion	Resp	Lower	Upper
167	101582		
166	21.6	17.1	25.7
139	14.6	10.0	15.0





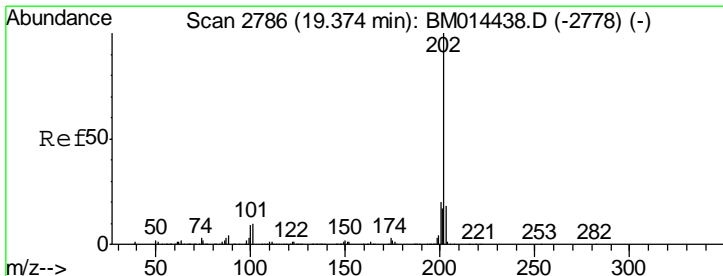
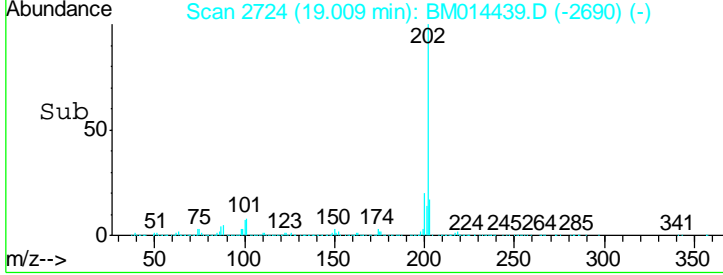
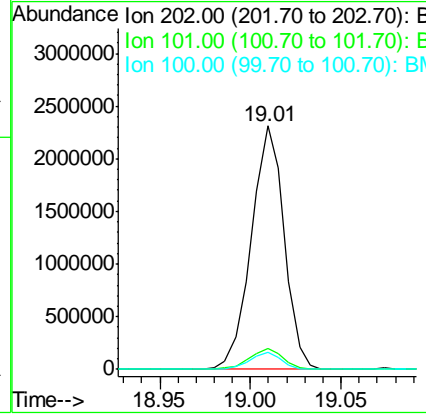
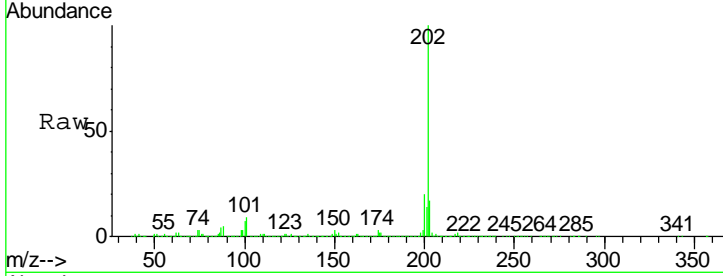
#74
 Fluoranthene
 Concen: 96.441 ng/ul
 RT: 19.01 min Scan# 2724
 Delta R.T. 0.00 min
 Lab File: BM014439.D
 Acq: 01 Mar 2018 18:58

Instrument :
 BNA_M
ClientSampled :
 BE5X1

Tgt Ion	Ratio	Lower	Upper
202	100		
101	8.6	4.6	7.0#
100	7.0	3.4	5.2#

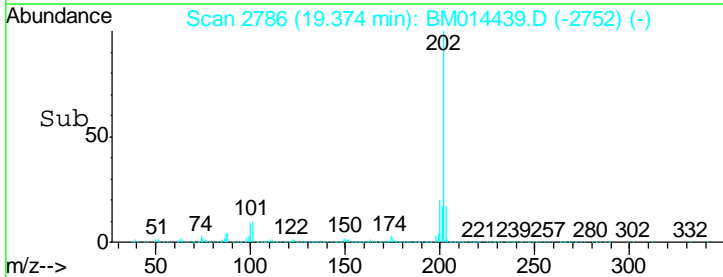
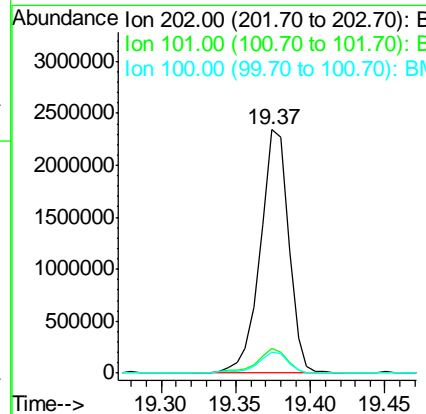
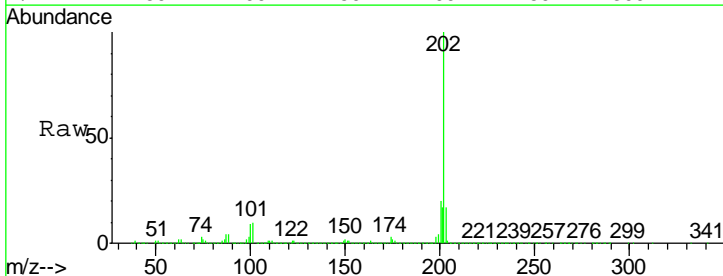
Manual Integrations
APPROVED

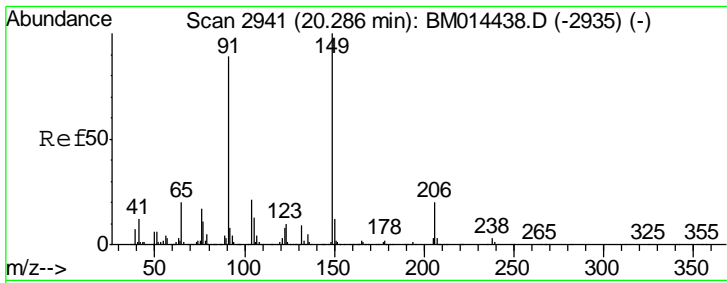
Sohil
 3/2/2018 3:31:54 PM



#77
 Pyrene
 Concen: 71.954 ng/ul
 RT: 19.37 min Scan# 2786
 Delta R.T. 0.00 min
 Lab File: BM014439.D
 Acq: 01 Mar 2018 18:58

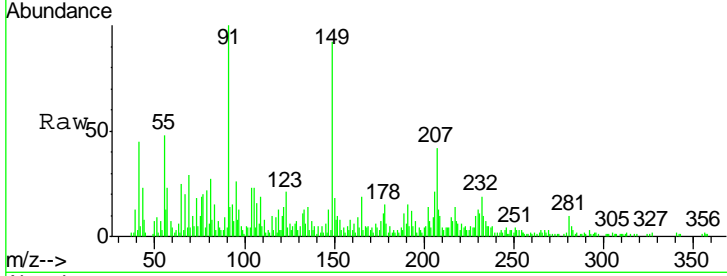
Tgt Ion	Ratio	Lower	Upper
202	100		
101	10.0	5.1	7.7#
100	8.8	4.9	7.3#





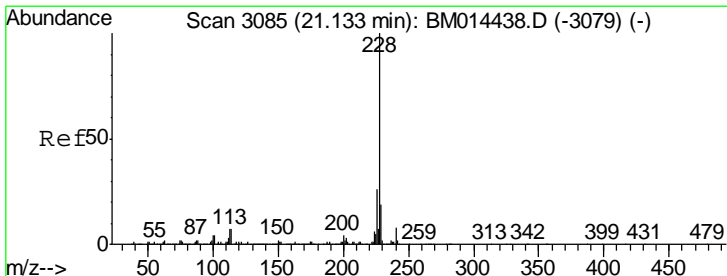
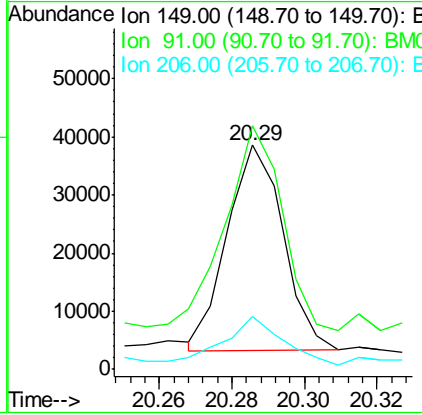
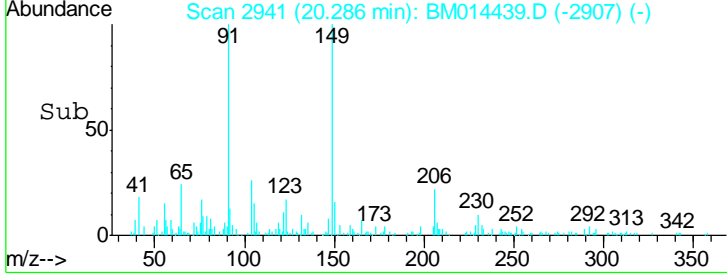
#78
 Butylbenzylphthalate
 Concen: 2.150 ng/ul
 RT: 20.29 min Scan# 2941
 Delta R.T. 0.00 min
 Lab File: BM014439.D
 Acq: 01 Mar 2018 18:58

Instrument :
 BNA_M
ClientSampled :
 BE5X1

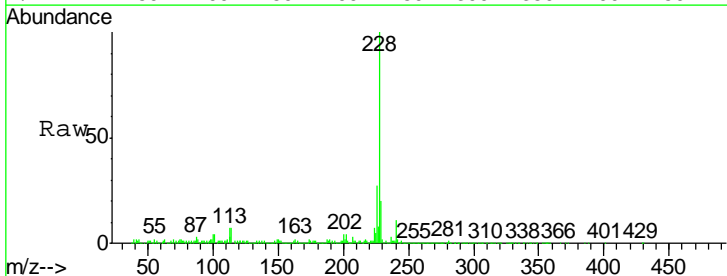


Tgt Ion	Resp	Lower	Upper
149	37924		
149	100		
91	108.7	62.7	94.1#
206	23.4	20.8	31.2

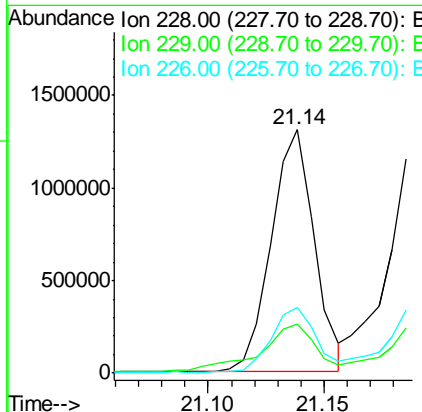
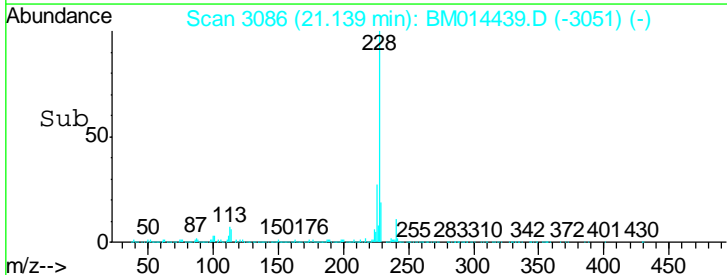
Manual Integrations
APPROVED
 Sohil
 3/2/2018 3:31:54 PM

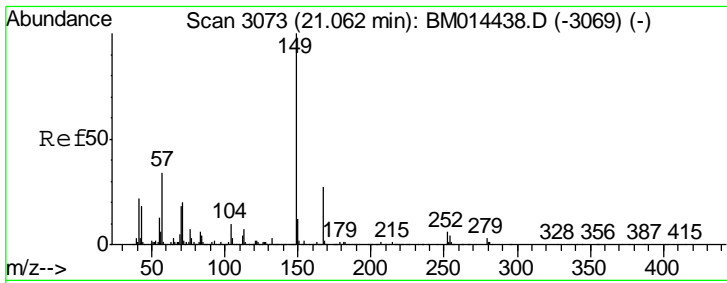


#80
 Benzo(a)anthracene
 Concen: 42.064 ng/ul
 RT: 21.14 min Scan# 3086
 Delta R.T. 0.01 min
 Lab File: BM014439.D
 Acq: 01 Mar 2018 18:58



Tgt Ion	Resp	Lower	Upper
228	1684864		
228	100		
229	20.0	15.4	23.0
226	26.8	21.4	32.0





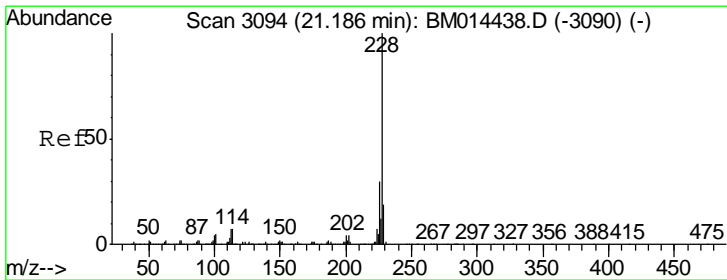
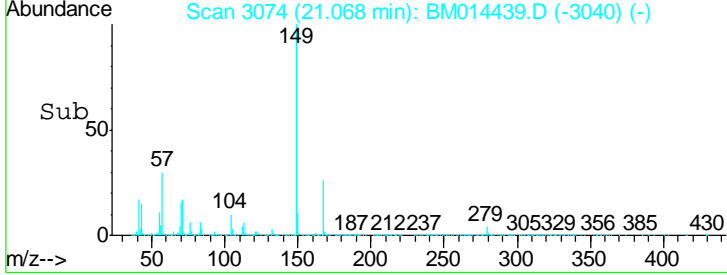
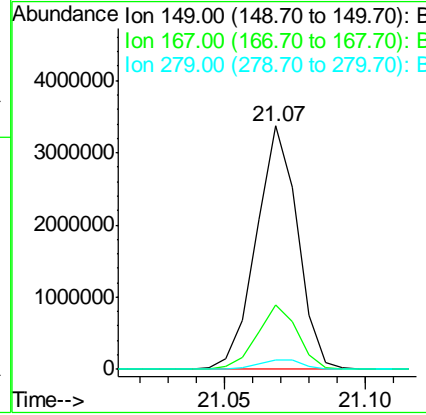
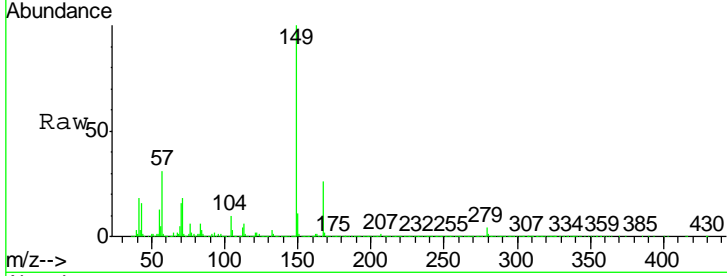
#81
 Bis(2-ethylhexyl)phthalate
 Concen: 134.356 ng/ul
 RT: 21.07 min Scan# 3074
 Delta R.T. 0.00 min
 Lab File: BM014439.D
 Acq: 01 Mar 2018 18:58

Instrument :
 BNA_M
 Client Sampled :
 BE5X1

Tgt Ion	Resp	Lower	Upper
149	100		
167	26.5	22.8	34.2
279	4.1	4.9	7.3#

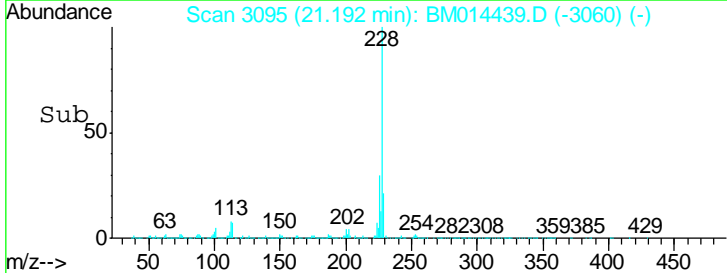
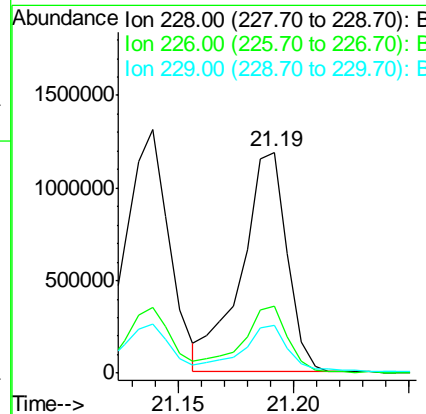
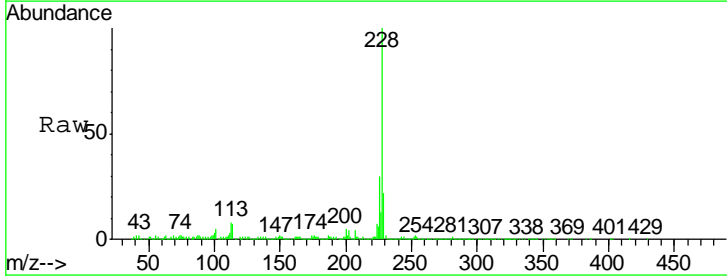
Manual Integrations
 APPROVED

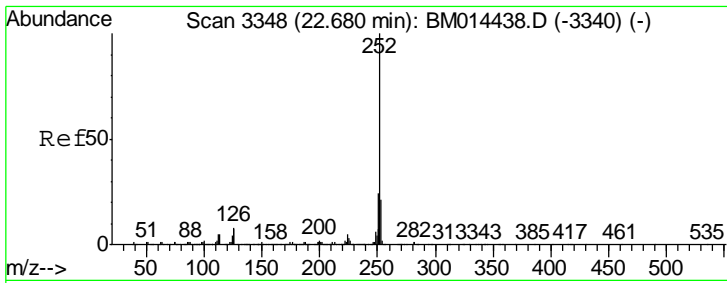
Sohil
 3/2/2018 3:31:54 PM



#82
 Chrysene
 Concen: 43.651 ng/ul
 RT: 21.19 min Scan# 3095
 Delta R.T. 0.01 min
 Lab File: BM014439.D
 Acq: 01 Mar 2018 18:58

Tgt Ion	Resp	Lower	Upper
228	100		
226	30.1	23.4	35.2
229	21.8	15.5	23.3





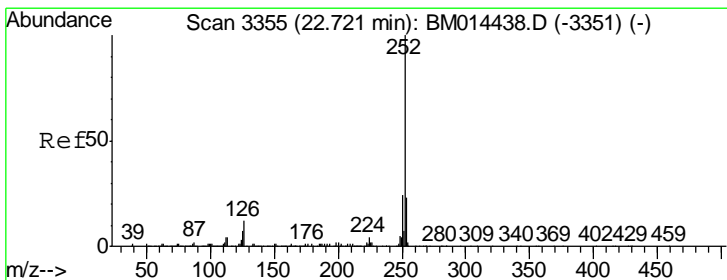
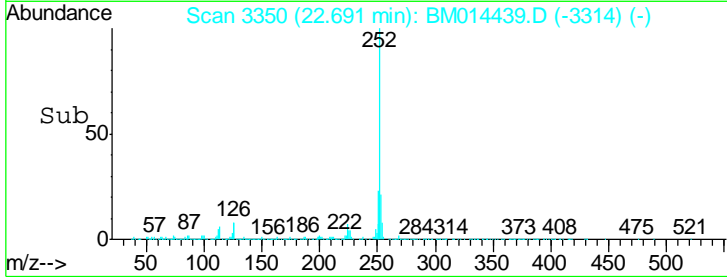
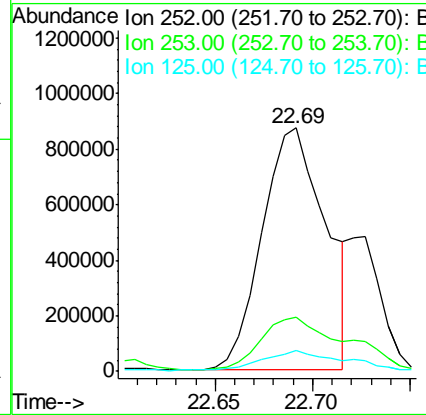
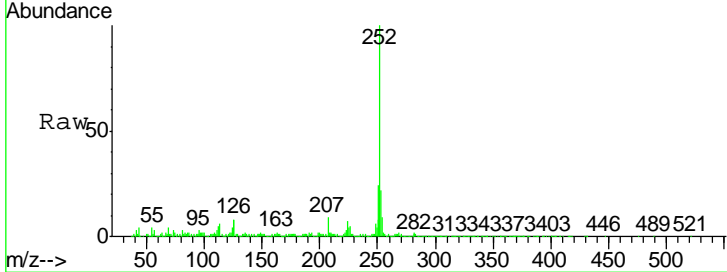
#85
 Benzo(b)fluoranthene
 Concen: 50.329 ng/ul
 RT: 22.69 min Scan# 3350
 Delta R.T. 0.01 min
 Lab File: BM014439.D
 Acq: 01 Mar 2018 18:58

Instrument :
 BNA_M
 ClientSampled :
 BE5X1

Tgt Ion	Resp	Lower	Upper
252	100		
253	22.0	17.9	26.9
125	8.5	3.6	5.4#

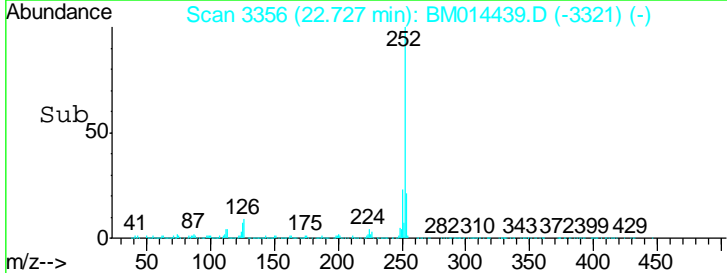
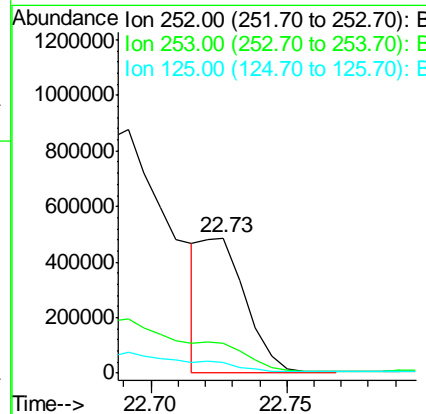
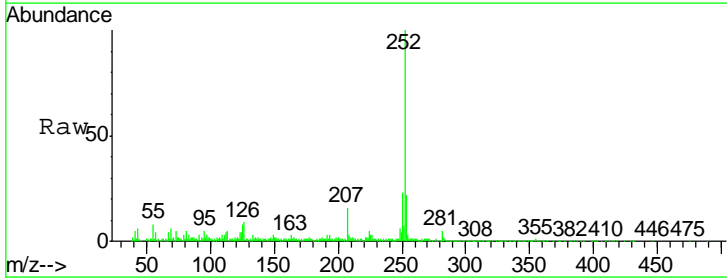
Manual Integrations
 APPROVED

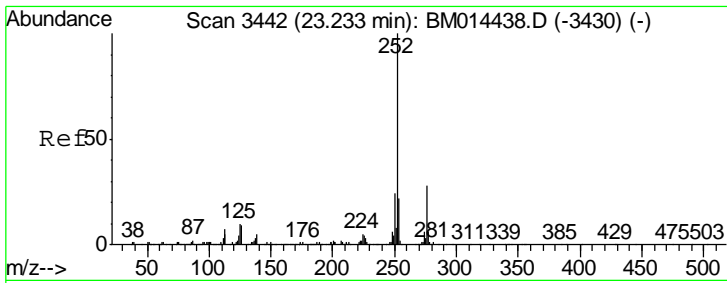
Sohil
 3/2/2018 3:31:54 PM



#86
 Benzo(k)fluoranthene
 Concen: 14.786 ng/ul m
 RT: 22.73 min Scan# 3356
 Delta R.T. 0.01 min
 Lab File: BM014439.D
 Acq: 01 Mar 2018 18:58

Tgt Ion	Resp	Lower	Upper
252	100		
253	22.2	17.1	25.7
125	7.9	3.4	5.2#





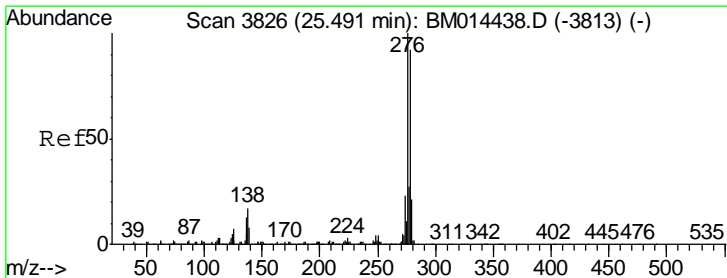
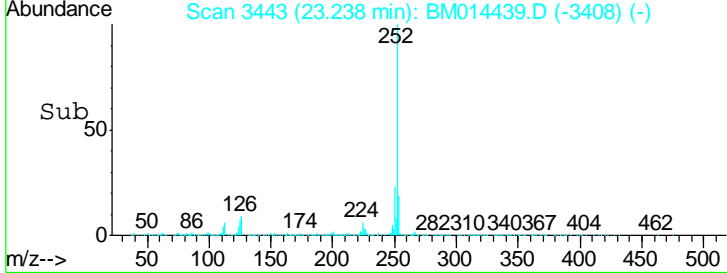
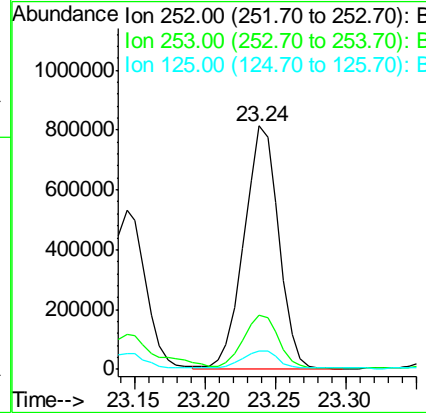
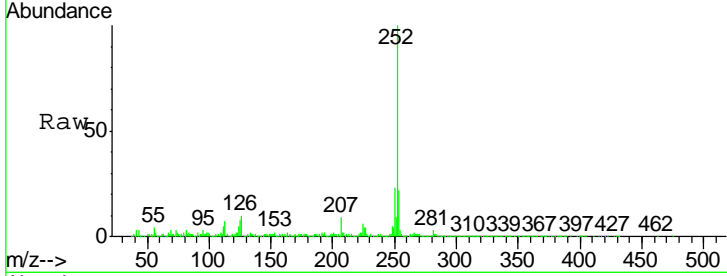
#88
 Benzo(a)pyrene
 Concen: 39.804 ng/ul
 RT: 23.24 min Scan# 3443
 Delta R.T. 0.01 min
 Lab File: BM014439.D
 Acq: 01 Mar 2018 18:58

Instrument :
 BNA_M
 Client Sampled :
 BE5X1

Tgt Ion	Resp	Lower	Upper
252	1395644		
253	22.3	18.2	27.2
125	7.5	4.0	6.0

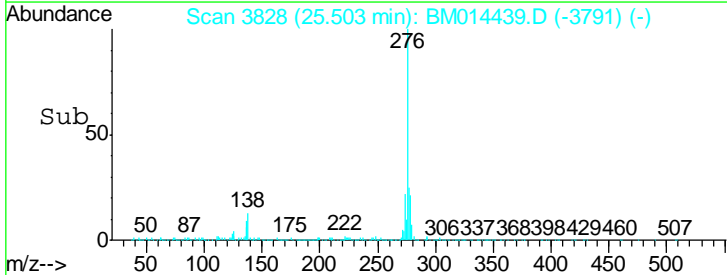
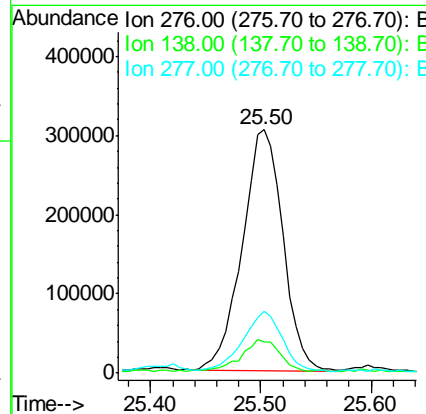
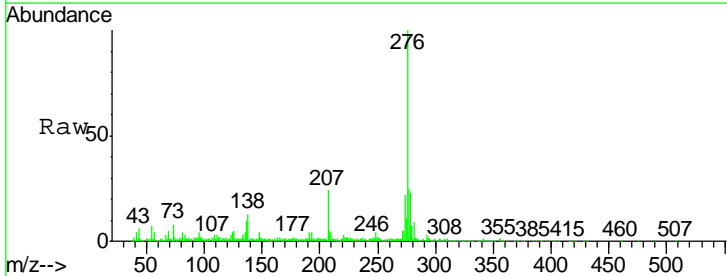
Manual Integrations
 APPROVED

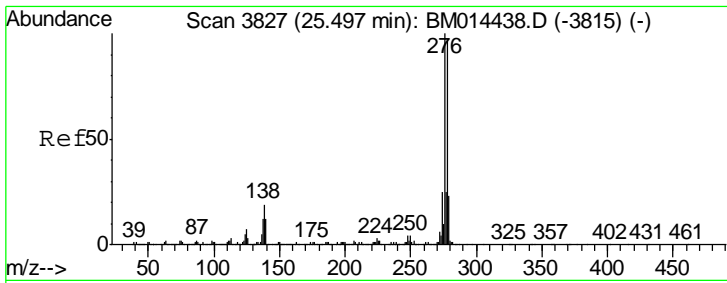
Sohil
 3/2/2018 3:31:54 PM



#89
 Indeno(1,2,3-cd)pyrene
 Concen: 23.249 ng/ul
 RT: 25.50 min Scan# 3828
 Delta R.T. 0.02 min
 Lab File: BM014439.D
 Acq: 01 Mar 2018 18:58

Tgt Ion	Resp	Lower	Upper
276	791024		
138	13.0	9.3	13.9
277	25.5	19.9	29.9



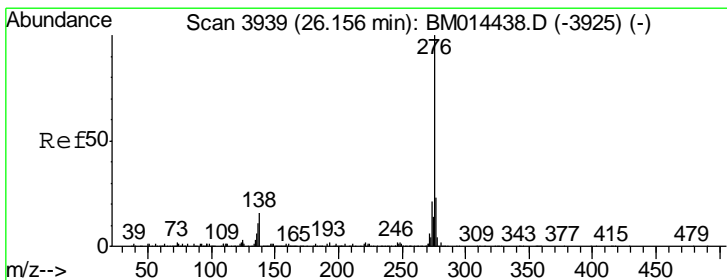
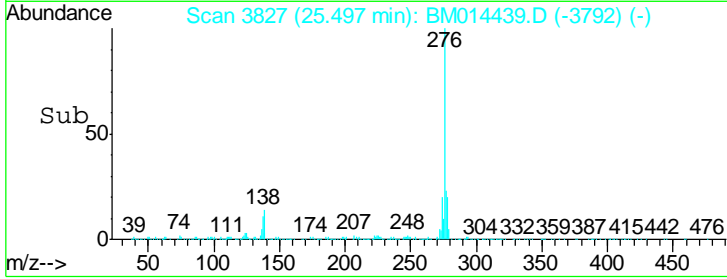
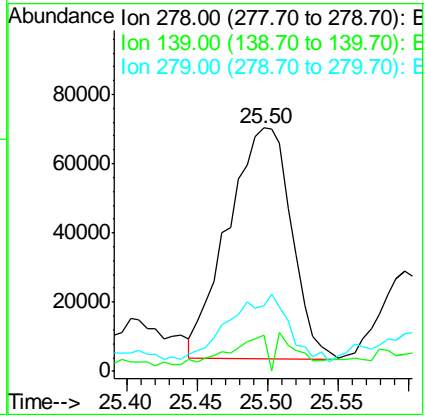
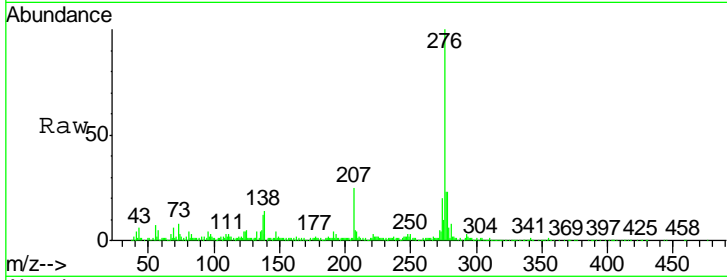


#90
 Dibenzo(a,h)anthracene
 Concen: 7.371 ng/ul
 RT: 25.50 min Scan# 3827
 Delta R.T. 0.01 min
 Lab File: BM014439.D
 Acq: 01 Mar 2018 18:58

Instrument :
 BNA_M
 ClientSampled :
 BE5X1

Tgt Ion	Ratio	Lower	Upper
278	100		
139	14.7	5.8	8.8#
279	27.1	18.6	27.8

Manual Integrations
APPROVED
 Sohil
 3/2/2018 3:31:54 PM



#91
 Benzo(g,h,i)perylene
 Concen: 21.939 ng/ul
 RT: 26.17 min Scan# 3941
 Delta R.T. 0.02 min
 Lab File: BM014439.D
 Acq: 01 Mar 2018 18:58

Tgt Ion	Ratio	Lower	Upper
276	100		
138	12.0	8.5	12.7
277	23.1	18.6	28.0

