

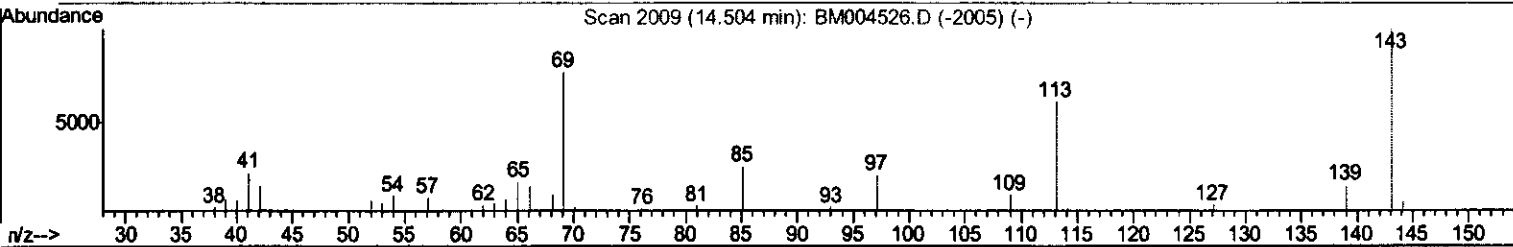
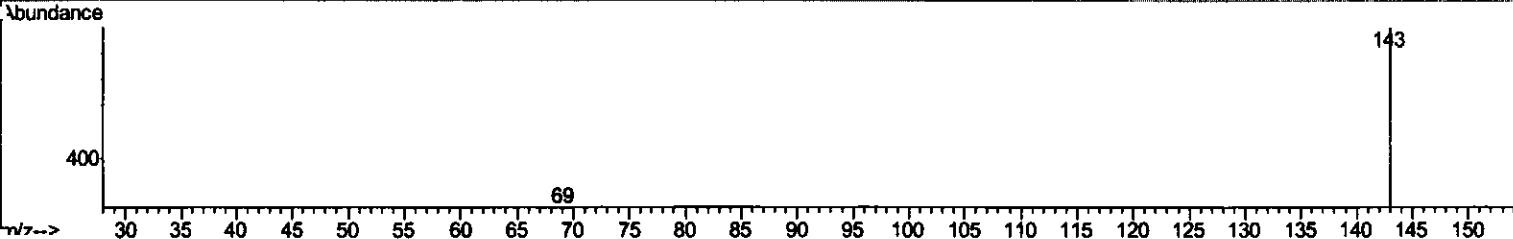
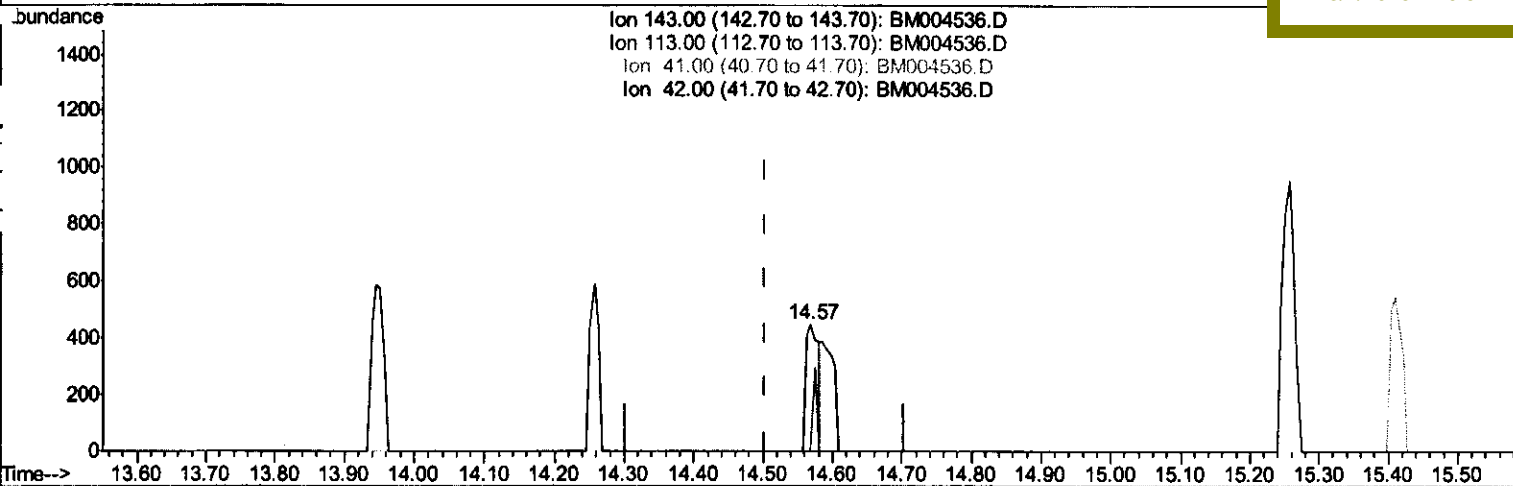
Quantitation Report (Qedit)

Data Path : Z:\HPCHEM1\BNA\_M\DATA\BM030316\  
 Data File : BM004536.D  
 Acq On : 03 Mar 2016 17:13  
 Operator : SJ/UM  
 Sample : H1584-12  
 Misc :  
 ALS Vial : 14 Sample Multiplier: 1

Instrument :  
 BNA\_M  
 ClientSampleId :  
 H0075

Quant Time: Mar 04 04:02:58 2016  
 Quant Method : Z:\HPCHEM1\BNA\_M\METHODS\SOM02.2-EPA-BM030316.M  
 Quant Title : SVOA CALIBRATION  
 QLast Update : Thu Mar 03 13:26:11 2016  
 Response via : Initial Calibration

Manual Integrations  
 APPROVED  
 UMANGI  
 3/4/2016 4:20:57 PM



TIC: BM004536.D

(52) 4-Nitrophenol-d4 (S)  
 14.569min (+0.065) 1.03ng/ul  
 response 580

Ion	Exp%	Act%
143.00	100	100
113.00	75.10	0.00#
41.00	28.80	0.00#
42.00	19.10	0.00#

Quantitation Report (Qedit)

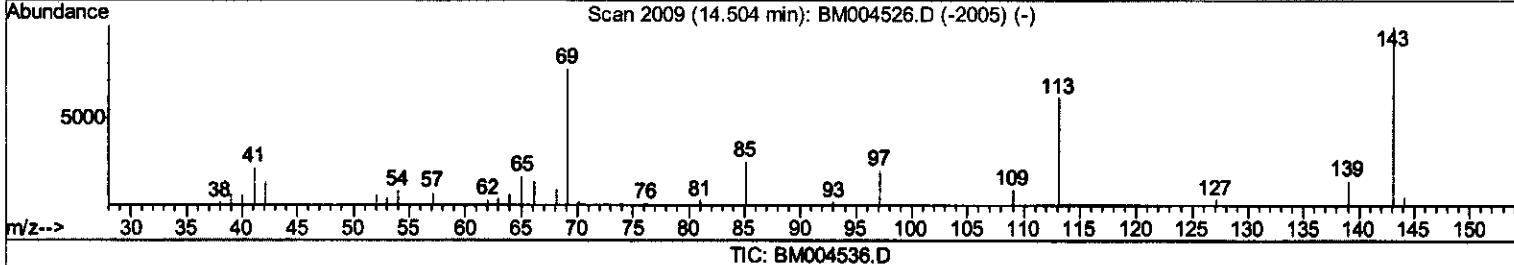
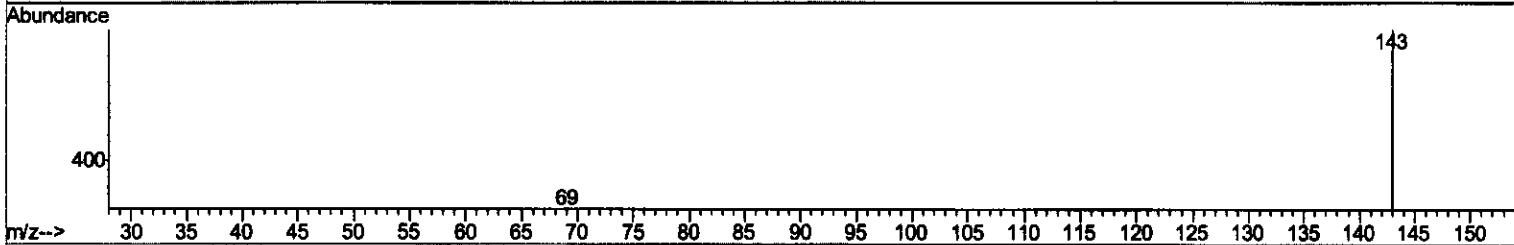
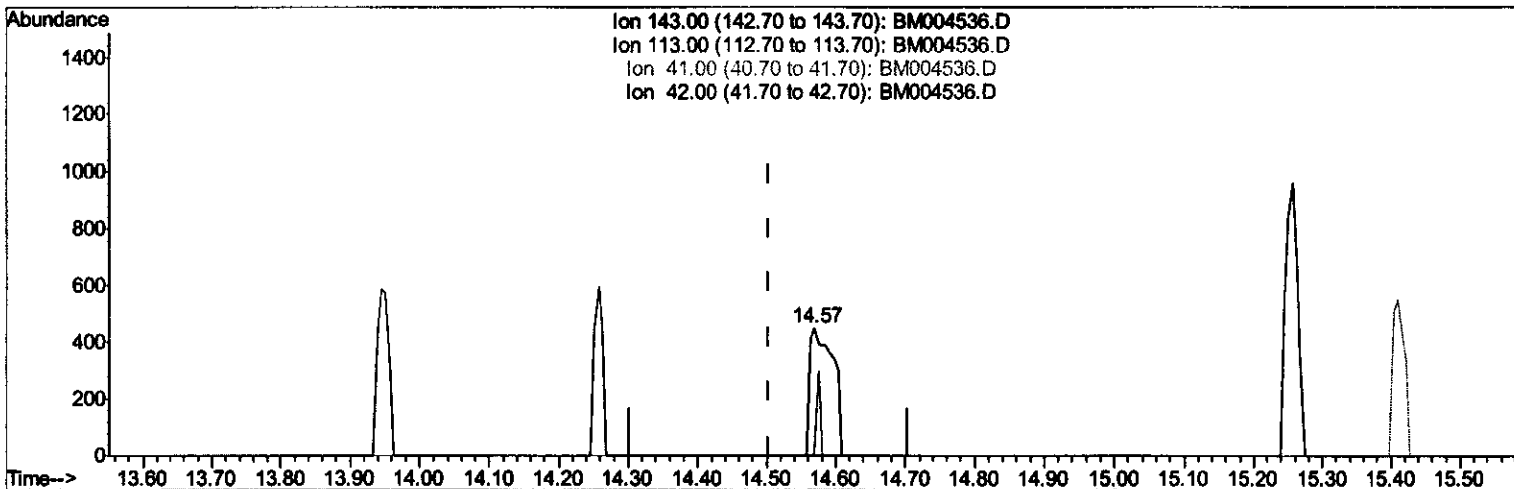
Data Path : Z:\HPCHEM1\BNA\_M\DATA\BM030316\  
 Data File : BM004536.D  
 Acq On : 03 Mar 2016 17:13  
 Operator : SJ/UM  
 Sample : H1584-12  
 Misc :  
 ALS Vial : 14 Sample Multiplier: 1

Instrument :  
 BNA\_M  
 Client Sampled :  
 H0075

Manual Integrations  
 APPROVED

UMANGI  
 3/4/2016 4:20:57 PM

Quant Time: Mar 04 04:02:58 2016  
 Quant Method : Z:\HPCHEM1\BNA\_M\METHODS\SOM02.2-EPA-BM030316.M  
 Quant Title : SVOA CALIBRATION  
 QLast Update : Thu Mar 03 13:26:11 2016  
 Response via : Initial Calibration



(52) 4-Nitrophenol-d4 (S)

14.569min (+0.065) 1.90ng/ul m

*SJ*  
*03/07/16*

response 1068

Ion	Exp%	Act%
143.00	100	100
113.00	75.10	0.00#
41.00	28.80	0.00#
42.00	19.10	0.00#

Data Path : Z:\HPCHEM1\BNA\_M\DATA\BM030316\  
 Data File : BM004536.D  
 Acq On : 03 Mar 2016 17:13  
 Operator : SJ/UM  
 Sample : H1584-12  
 Misc :  
 ALS Vial : 14 Sample Multiplier: 1

Instrument :  
 BNA\_M  
 ClientSampleId :  
 H0075

Quant Time: Mar 04 04:20:05 2016  
 Quant Method : Z:\HPCHEM1\BNA\_M\METHODS\SOM02.2-EPA-BM030316.M  
 Quant Title : SVOA CALIBRATION  
 QLast Update : Thu Mar 03 13:26:11 2016  
 Response via : Initial Calibration

Manual Integrations  
 APPROVED  
 UMANGI  
 3/4/2016 4:20:57 PM

Internal Standards	R.T.	QIon	Response	Conc	Units	Dev(Min)
1) 1,4-Dichlorobenzene-d4	7.59	152	19159	20.00	ng/ul	0.00
18) Naphthalene-d8	10.38	136	81000	20.00	ng/ul	0.00
36) Acenaphthene-d10	14.26	164	45817	20.00	ng/ul	0.00
62) Phenanthrene-d10	17.01	188	104860	20.00	ng/ul	0.00
78) Chrysene-d12	21.22	240	118250	20.00	ng/ul	0.00
86) Perylene-d12	23.43	264	114597	20.00	ng/ul	0.00

System Monitoring Compounds	R.T.	QIon	Response	Conc	Units	Dev(Min)
3) 1,4-Dioxane-d8	0.00	96	0	0.00	ng/uL	
5) Phenol-d5	6.79	99	7600	4.92	ng/ul	0.00
7) Bis-(2-Chloroethyl) ether-d	6.93	67	20718	26.63	ng/ul	0.00
9) 2-Chlorophenol-d4	7.13	132	29874	21.70	ng/ul	0.00
13) 4-Methylphenol-d8	8.32	113	16165	11.88	ng/ul	0.00
19) Nitrobenzene-d5	8.76	128	17119	28.28	ng/ul	0.00
22) 2-Nitrophenol-d4	9.47	143	19657	28.37	ng/ul	0.00
26) 2,4-Dichlorophenol-d3	10.03	165	30636	24.44	ng/ul	0.01
29) 4-Chloroaniline-d4	0.00	131	0	0.00	ng/ul	
44) Dimethylphthalate-d6	13.67	166	116847	30.66	ng/ul	0.00
47) Acenaphthylene-d8	13.95	160	140168	30.42	ng/ul	0.00
52) 4-Nitrophenol-d4	14.57	143	1068m	1.90	ng/ul	0.06
58) Fluorene-d10	15.26	176	102077	30.88	ng/ul	0.00
63) 4,6-Dinitro-2-methylphenol	15.41	200	14913	21.90	ng/ul	0.00
71) Anthracene-d10	17.11	188	159059	31.00	ng/ul	0.00
79) Pyrene-d10	19.42	212	180269	28.35	ng/ul	0.00
90) Benzo(a)pyrene-d12	23.30	264	186404	30.57	ng/ul	0.00

> SJ  
 03/07/16

Target Compounds Qvalue

(#) = qualifier out of range (m) = manual integration (+) = signals summed

Quantitation Report (QT Reviewed)

Data Path : Z:\HPCHEM1\BNA\_M\DATA\BM030316\  
 Data File : BM004536.D  
 Acq On : 03 Mar 2016 17:13  
 Operator : SJ/UM  
 Sample : H1584-12  
 Misc :  
 ALS Vial : 14 Sample Multiplier: 1

Instrument :  
 BNA\_M  
 ClientSampled :  
 H0075

Manual Integrations  
 APPROVED

UMANGI  
 3/4/2016 4:20:57 PM

Quant Time: Mar 04 04:20:05 2016  
 Quant Method : Z:\HPCHEM1\BNA\_M\METHODS\SOM02.2-EPA-BM030316.M  
 Quant Title : SVOA CALIBRATION  
 QLast Update : Thu Mar 03 13:26:11 2016  
 Response via : Initial Calibration

