

Data Path : Z:\SVOASRV\HPCHEM1\BNA M\DATA\BM030321\
 Data File : BM028972.D
 Acq On : 03 Mar 2021 11:59
 Operator : CG/JU
 Sample : M1546-01
 Misc :
 ALS Vial : 6 Sample Multiplier: 1

Instrument :
 BNA_M
 ClientSampleId :
 C0FY9

Integration Parameters: LSCINT.P

Integrator: RTE
 Smoothing : OFF
 Sampling : 1
 Start Thrs: 0.2
 Stop Thrs : 0

Filtering: 5
 Min Area: 0.1 % of largest Peak
 Max Peaks: 100
 Peak Location: TOP

If leading or trailing edge < 100 prefer < Baseline drop else tangent >
 Peak separation: 5

Method : Z:\SVOASRV\HPCHEM1\BNA_M\METHODS\SOM-EPA-BM022721MA.M
 Title : SVOA CALIBRATION

Signal : TIC

peak #	R.T. min	first scan	max scan	last scan	PK TY	peak height	corr. area	corr. % max.	% of total
1	3.122	19	23	27	rVB	3345	4075	1.43%	0.143%
2	3.252	43	45	49	rVB	277	330	0.12%	0.012%
3	3.622	107	108	112	rVB	352	342	0.12%	0.012%
4	6.863	657	659	662	rBB	705	714	0.25%	0.025%
5	6.951	670	674	683	rBB	11631	17409	6.12%	0.613%
6	7.104	695	700	709	rBB	46171	69718	24.51%	2.454%
7	7.298	728	733	743	rBB	53910	82991	29.17%	2.922%
8	7.769	807	813	821	rBB	48048	73492	25.83%	2.587%
9	8.498	932	937	947	rBB	34406	51592	18.14%	1.816%
10	8.940	1007	1012	1022	rBB	62400	100579	35.35%	3.541%
11	9.310	1071	1075	1078	rBB2	1435	1809	0.64%	0.064%
12	9.663	1129	1135	1143	rBB	53634	84454	29.69%	2.973%
13	10.198	1221	1226	1238	rBB	71274	113006	39.72%	3.978%
14	10.569	1282	1289	1296	rBB	63243	103013	36.21%	3.626%
15	10.739	1314	1318	1324	rBB	832	1481	0.52%	0.052%
16	11.792	1495	1497	1500	rBB	411	361	0.13%	0.013%
17	12.175	1559	1562	1564	rBB	468	538	0.19%	0.019%
18	13.845	1841	1846	1852	rBV	131124	173337	60.93%	6.102%
19	13.898	1852	1855	1858	rVB	1014	1141	0.40%	0.040%
20	14.122	1887	1893	1902	rBV	153989	211726	74.42%	7.454%
21	14.427	1940	1945	1951	rBB	91747	126322	44.40%	4.447%
22	14.680	1985	1988	1996	rBB	3556	5806	2.04%	0.204%
23	15.221	2077	2080	2081	rBB	411	339	0.12%	0.012%
24	15.427	2109	2115	2121	rBB	188557	253258	89.02%	8.916%
25	15.569	2135	2139	2148	rBB	57235	72778	25.58%	2.562%
26	15.668	2153	2156	2158	rBB	866	852	0.30%	0.030%
27	16.392	2276	2279	2281	rBB	604	593	0.21%	0.021%
28	17.174	2406	2412	2418	rBB	103931	134067	47.13%	4.720%
29	17.274	2423	2429	2438	rBB	204216	270899	95.22%	9.537%
30	17.933	2538	2541	2544	rVB	552	466	0.16%	0.016%
31	18.057	2559	2562	2567	rVB2	3437	4147	1.46%	0.146%
32	18.539	2640	2644	2651	rBV	2190	3258	1.15%	0.115%
33	18.804	2682	2689	2695	rBV	14522	16783	5.90%	0.591%
34	18.892	2701	2704	2708	rVV	3236	3323	1.17%	0.117%

Data Path : Z:\SVOASRV\HPCHEM1\BNA M\DATA\BM030321\
 Data File : BM028972.D
 Acq On : 03 Mar 2021 11:59
 Operator : CG/JU
 Sample : M1546-01
 Misc :
 ALS Vial : 6 Sample Multiplier: 1

Instrument :
 BNA_M
 ClientSampleId :
 C0FY9

Integration Parameters: LSCINT.P
 Integrator: RTE
 Smoothing : OFF
 Sampling : 1
 Start Thrs: 0.2
 Stop Thrs : 0

Filtering: 5
 Min Area: 0.1 % of largest Peak
 Max Peaks: 100
 Peak Location: TOP

If leading or trailing edge < 100 prefer < Baseline drop else tangent >
 Peak separation: 5

Method : Z:\SVOASRV\HPCHEM1\BNA_M\METHODS\SOM-EPA-BM022721MA.M
 Title : SVOA CALIBRATION

35	18.957	2712	2715	2722	rVB2	1401	1519	0.53%	0.053%
36	19.109	2739	2741	2744	rVB	425	389	0.14%	0.014%
37	19.204	2752	2757	2762	rVB3	1241	2203	0.77%	0.078%
38	19.262	2764	2767	2768	rBV	493	348	0.12%	0.012%
39	19.339	2778	2780	2784	rBV3	1401	1728	0.61%	0.061%
40	19.380	2784	2787	2789	rBV2	363	497	0.17%	0.017%
41	19.439	2793	2797	2804	rBV3	2496	3469	1.22%	0.122%
42	19.509	2806	2809	2812	rBV2	734	1121	0.39%	0.039%
43	19.562	2812	2818	2823	rVV	217840	284485	100.00%	10.015%
44	19.627	2827	2829	2832	rBV3	258	306	0.11%	0.011%
45	19.680	2837	2838	2840	rBV	505	298	0.10%	0.010%
46	19.786	2854	2856	2859	rBV3	388	500	0.18%	0.018%
47	19.827	2861	2863	2865	rBV2	354	403	0.14%	0.014%
48	19.909	2875	2877	2879	rVV2	481	418	0.15%	0.015%
49	19.968	2884	2887	2890	rBV2	761	911	0.32%	0.032%
50	20.086	2905	2907	2910	rBV4	1264	1931	0.68%	0.068%
51	20.145	2914	2917	2918	rBV3	799	826	0.29%	0.029%
52	20.186	2922	2924	2925	rBV2	734	454	0.16%	0.016%
53	20.409	2960	2962	2963	rBV2	762	461	0.16%	0.016%
54	20.551	2984	2986	2987	rBV2	789	411	0.14%	0.014%
55	21.045	3066	3070	3075	rBV	17017	21348	7.50%	0.752%
56	21.339	3115	3120	3125	rBV	106769	129120	45.39%	4.545%
57	23.397	3463	3470	3476	rBV	157652	273884	96.27%	9.642%
58	23.533	3487	3493	3503	rVB2	72142	128584	45.20%	4.527%

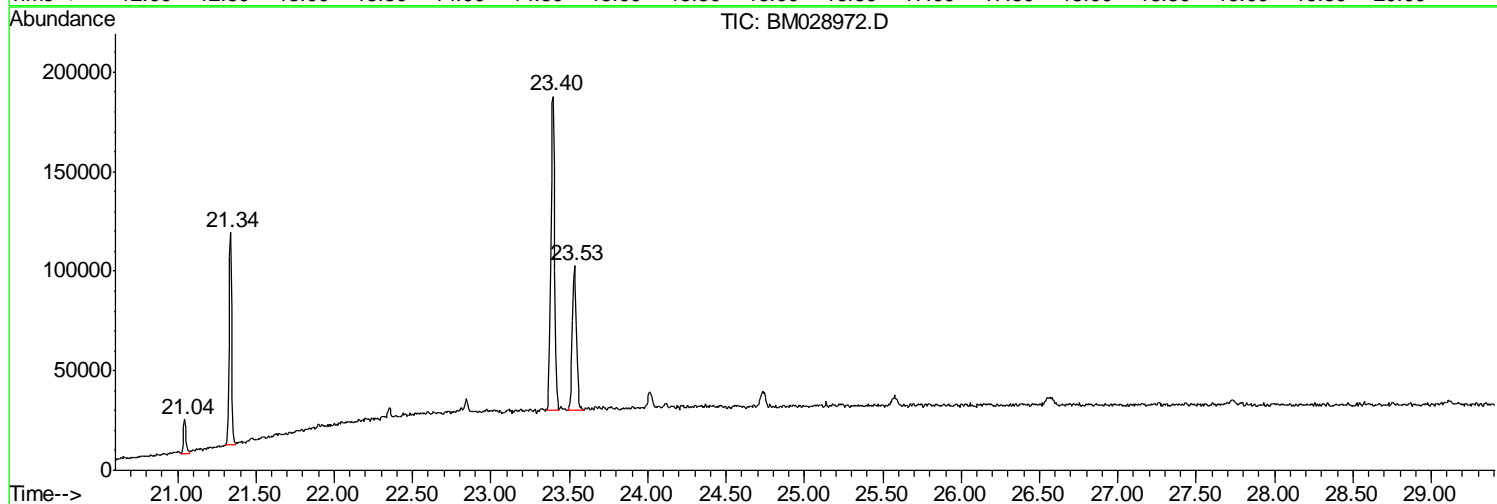
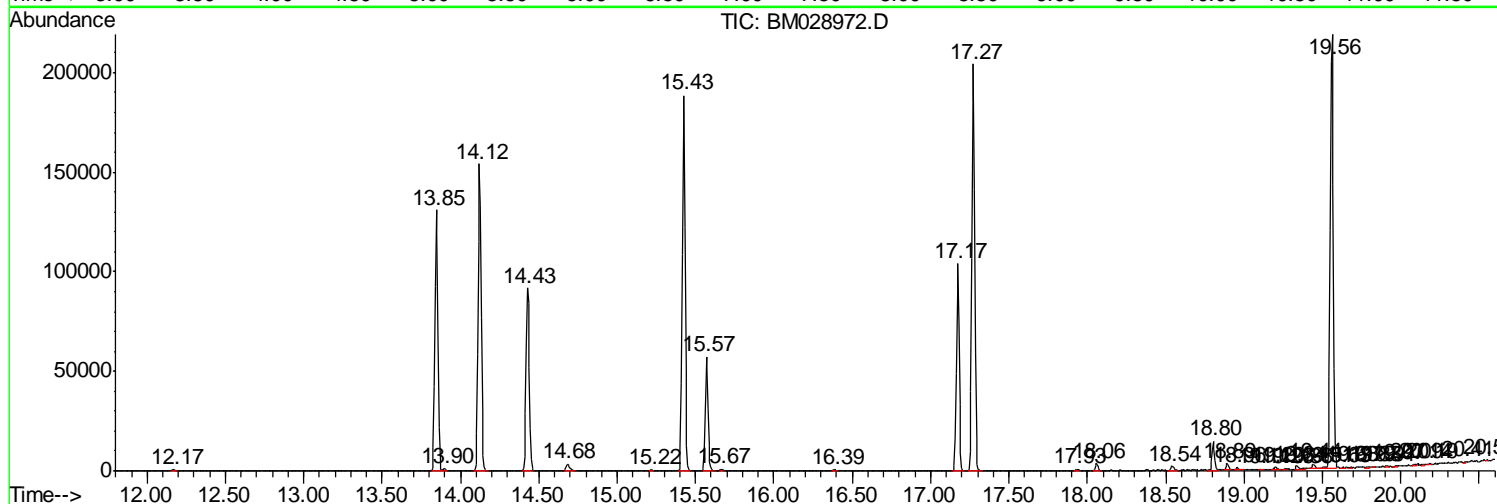
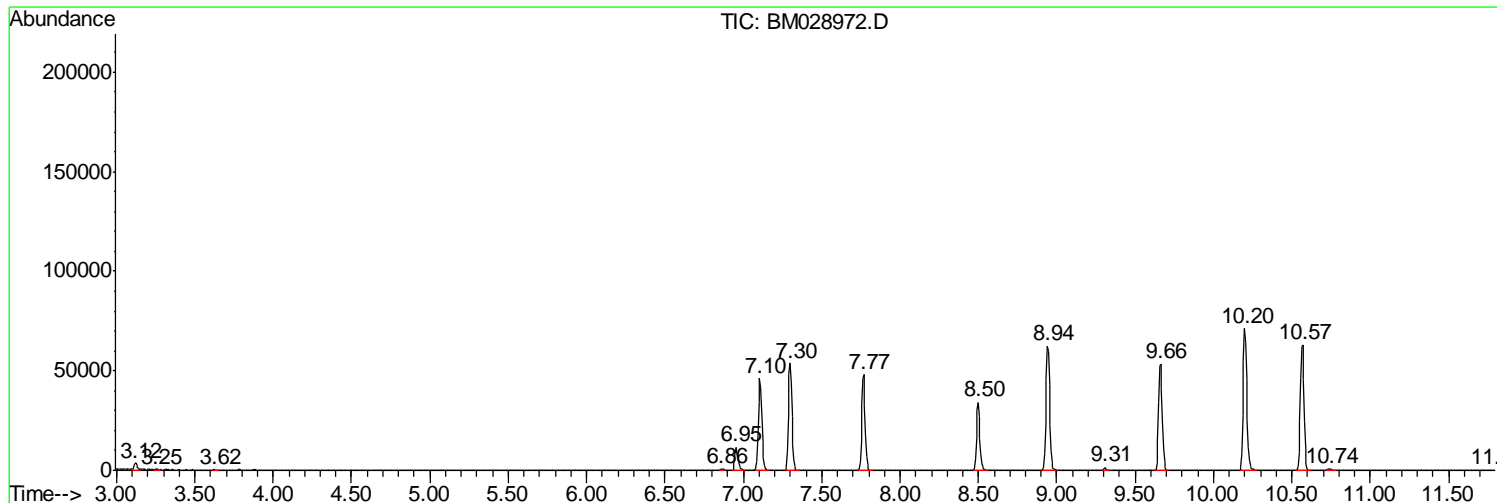
Sum of corrected areas: 2840613

Data Path : Z:\SVOASRV\HPCHEM1\BNA M\DATA\BM030321\
 Data File : BM028972.D
 Acq On : 03 Mar 2021 11:59
 Operator : CG/JU
 Sample : M1546-01
 Misc :
 ALS Vial : 6 Sample Multiplier: 1

Instrument :
 BNA_M
 ClientSampleId :
 C0FY9

Quant Method : Z:\SVOASRV\HPCHEM1\BNA_M\METHODS\SOM-EPA-BM022721MA.M
 Quant Title : SVOA CALIBRATION

TIC Library : C:\DATABASE\NIST11.L
 TIC Integration Parameters: LSCINT.P



Data Path : Z:\SVOASRV\HPCHEM1\BNA M\DATA\BM030321\
 Data File : BM028972.D
 Acq On : 03 Mar 2021 11:59
 Operator : CG/JU
 Sample : M1546-01
 Misc :
 ALS Vial : 6 Sample Multiplier: 1

Instrument :
 BNA_M
 ClientSampled :
 C0FY9

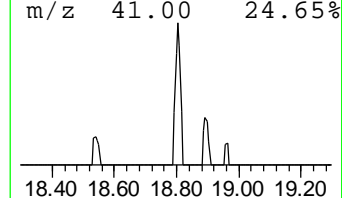
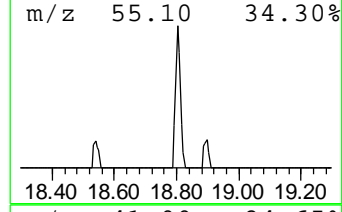
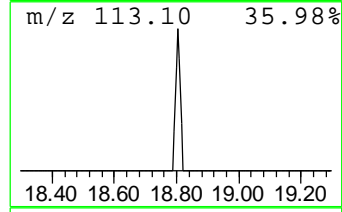
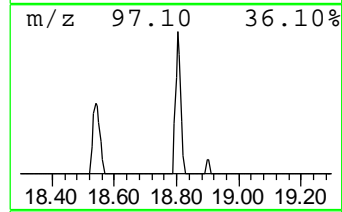
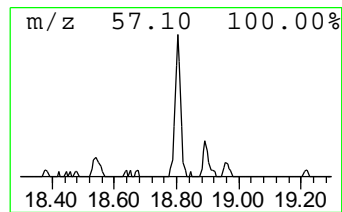
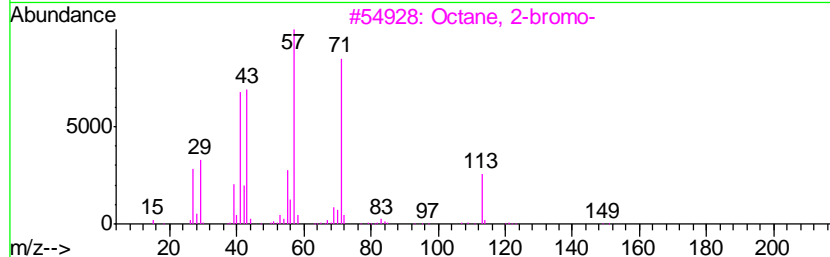
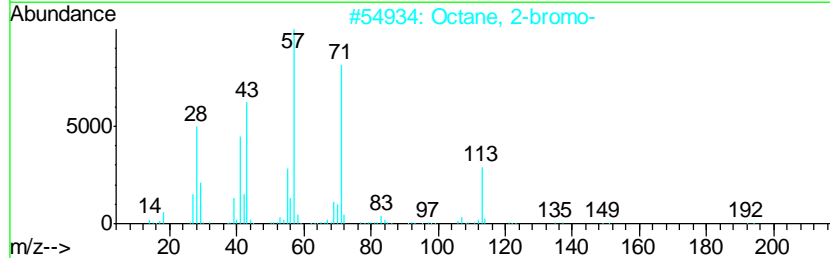
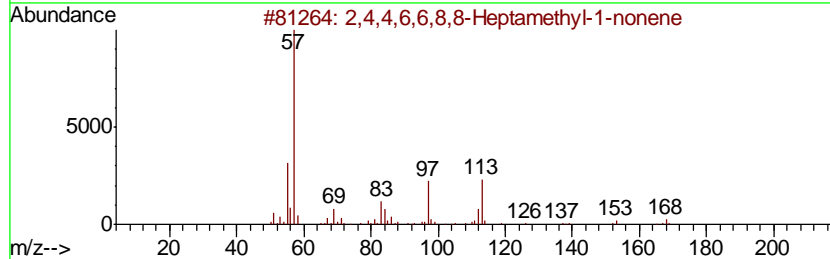
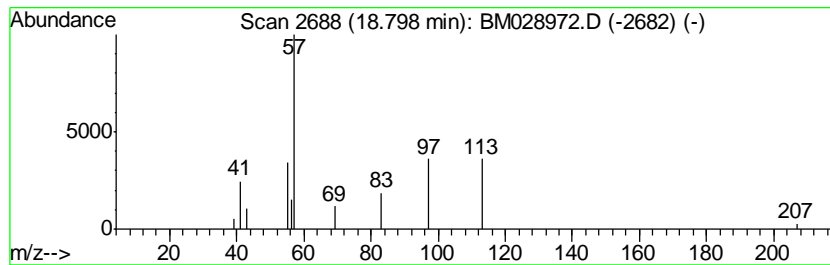
Quant Method : Z:\SVOASRV\HPCHEM1\BNA_M\METHODS\SOM-EPA-BM022721MA.M
 Quant Title : SVOA CALIBRATION

TIC Library : C:\DATABASE\NIST11.L
 TIC Integration Parameters: LSCINT.P

 Peak Number 1 (DEL) Alkane: Straight-Chai... Concentration Rank 2

R.T.	EstConc	Area	Relative to ISTD	R.T.
18.80	2.50 ng/ul	16783	Phenanthrene-d10	17.17

Hit#	of	Tentative ID	MW	MolForm	CAS#	Qual
1	5	2,4,4,6,6,8,8-Heptamethyl-1-nonene	224	C16H32	015796-04-0	72
2		Octane, 2-bromo-	192	C8H17Br	000557-35-7	43
3		Octane, 2-bromo-	192	C8H17Br	000557-35-7	43
4		Octane, 2-iodo-	240	C8H17I	000557-36-8	37
5		1-Pentanol, 3-methyl-2-propyl-	144	C9H20O	054004-40-9	28



Data Path : Z:\SVOASRV\HPCHEM1\BNA M\DATA\BM030321\
 Data File : BM028972.D
 Acq On : 03 Mar 2021 11:59
 Operator : CG/JU
 Sample : M1546-01
 Misc :
 ALS Vial : 6 Sample Multiplier: 1

Instrument :
 BNA_M
 ClientSampleID :
 C0FY9

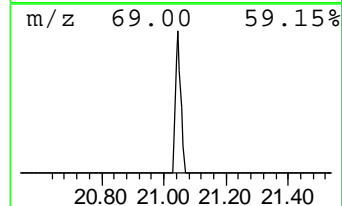
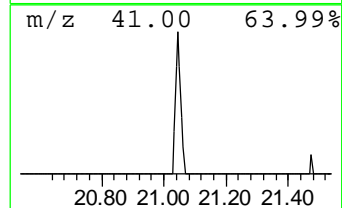
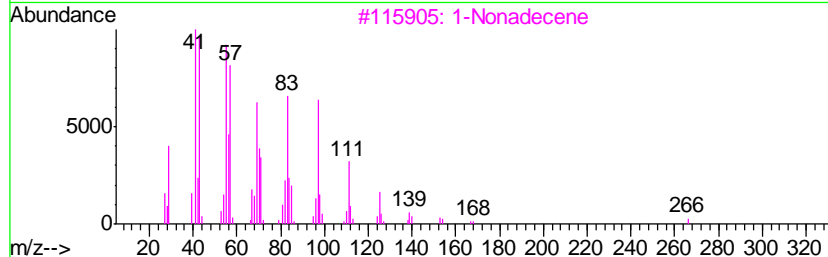
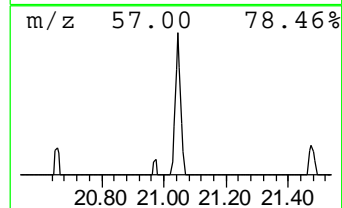
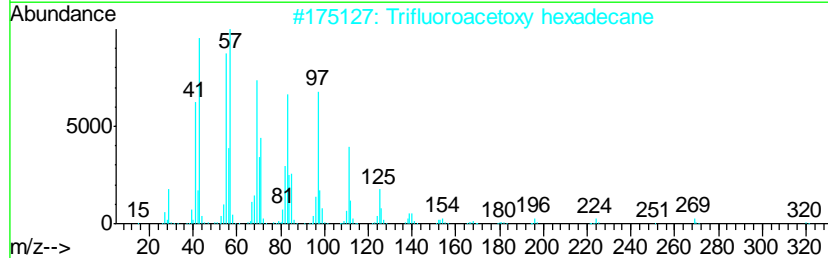
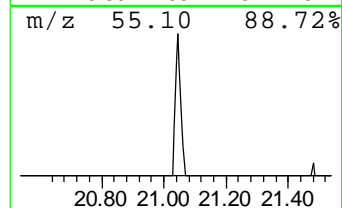
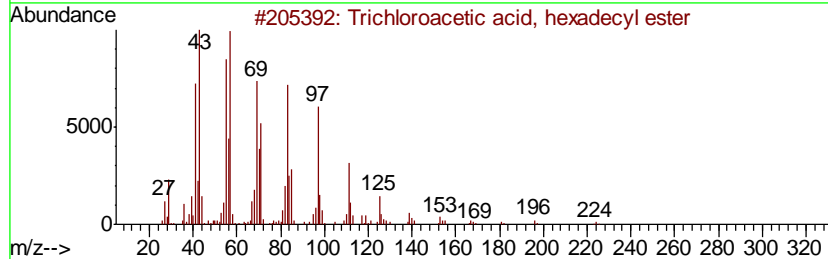
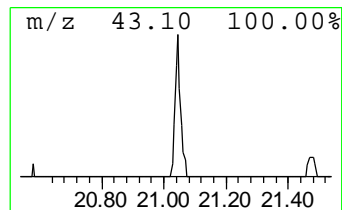
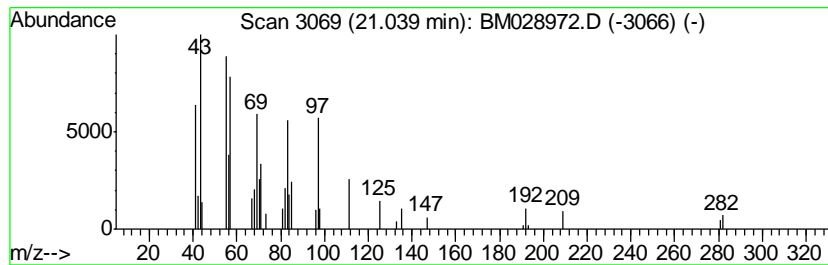
Quant Method : Z:\SVOASRV\HPCHEM1\BNA_M\METHODS\SOM-EPA-BM022721MA.M
 Quant Title : SVOA CALIBRATION

TIC Library : C:\DATABASE\NIST11.L
 TIC Integration Parameters: LSCINT.P

 Peak Number 2 Trichloroacetic acid, hexad... Concentration Rank 1

R.T.	EstConc	Area	Relative to ISTD	R.T.
21.04	3.31 ng/ul	21348	Chrysene-d12	21.34

Hit#	of	Tentative ID	MW	MolForm	CAS#	Qual
1	5	Trichloroacetic acid, hexadecyl ...	386	C18H33Cl3O2	074339-54-1	87
2		Trifluoroacetoxy hexadecane	338	C18H33F3O2	006222-03-3	87
3		1-Nonadecene	266	C19H38	018435-45-5	83
4		1-Octadecanol	270	C18H38O	000112-92-5	83
5		Trifluoroacetic acid, pentadecyl...	324	C17H31F3O2	959010-23-2	83



Data Path : Z:\SVOASRV\HPCHEM1\BNA_M\DATA\BM030321\
Data File : BM028972.D
Acq On : 03 Mar 2021 11:59
Operator : CG/JU
Sample : M1546-01
Misc :
ALS Vial : 6 Sample Multiplier: 1

Instrument :
BNA_M
ClientSampleId :
C0FY9

Quant Method : Z:\SVOASRV\HPCHEM1\BNA_M\METHODS\SOM-EPA-BM022721MA.M
Quant Title : SVOA CALIBRATION

TIC Library : C:\DATABASE\NIST11.L
TIC Integration Parameters: LSCINT.P

TIC Top Hit name	RT	EstConc	Units	Response	--Internal Standard--			
					#	RT	Resp	Conc
(DEL) Alkane: Str...	18.80	2.5	ng/ul	16783	4	17.17	134067	20.0
Trichloroacetic a...	21.04	3.3	ng/ul	21348	5	21.34	129120	20.0