

Data Path : Z:\HPCHEM1\BNA_M\DATA\BM030516\
 Data File : BM004560.D
 Acq On : 05 Mar 2016 02:35
 Operator : SJ/UM
 Sample : SSTD04045
 Misc :
 ALS Vial : 6 Sample Multiplier: 1

Instrument :
 BNA_M
 ClientSampleId :
 SSTDIC0.5

Quant Time: Mar 05 04:02:44 2016
 Quant Method : Z:\HPCHEM1\BNA_M\METHODS\SOM02.2-EPA-BM030516.M
 Quant Title : SVOA CALIBRATION
 QLast Update : Sat Mar 05 03:56:31 2016
 Response via : Initial Calibration

Internal Standards	R.T.	QIon	Response	Conc	Units	Dev(Min)
1) 1,4-Dichlorobenzene-d4	7.30	152	46968	20.00	ng/ul	0.00
18) Naphthalene-d8	10.06	136	220995	20.00	ng/ul	0.00
36) Acenaphthene-d10	13.97	164	117379	20.00	ng/ul	0.00
62) Phenanthrene-d10	16.74	188	232505	20.00	ng/ul	0.00
78) Chrysene-d12	20.99	240	220086	20.00	ng/ul	0.00
86) Perylene-d12	23.09	264	222559	20.00	ng/ul	0.00

System Monitoring Compounds

3) 1,4-Dioxane-d8	2.84	96	15971	15.41	ng/uL	0.00
5) Phenol-d5	6.57	99	155495	41.03	ng/ul	-0.01
7) Bis-(2-Chloroethyl)ether-d	6.65	67	77812	41.11	ng/ul	0.00
9) 2-Chlorophenol-d4	6.86	132	144520	40.75	ng/ul	0.00
13) 4-Methylphenol-d8	8.08	113	152264	43.19	ng/ul	0.00
19) Nitrobenzene-d5	8.46	128	70432	40.90	ng/ul	0.00
22) 2-Nitrophenol-d4	9.17	143	78477	40.82	ng/ul	0.00
26) 2,4-Dichlorophenol-d3	9.76	165	126811	40.17	ng/ul	-0.01
29) 4-Chloroaniline-d4	10.22	131	181035	45.05	ng/ul	0.00
44) Dimethylphthalate-d6	13.40	166	368806	38.94	ng/ul	0.00
47) Acenaphthylene-d8	13.66	160	480983	39.62	ng/ul	0.00
52) 4-Nitrophenol-d4	14.40	143	45790	37.05	ng/ul	-0.01
58) Fluorene-d10	14.99	176	310763	38.79	ng/ul	0.00
63) 4,6-Dinitro-2-methylphenol	15.16	200	52629	44.95	ng/ul	0.00
71) Anthracene-d10	16.84	188	453743	39.71	ng/ul	0.00
79) Pyrene-d10	19.16	212	438041	40.82	ng/ul	0.00
90) Benzo(a)pyrene-d12	22.96	264	467502	39.79	ng/ul	0.00

Target Compounds

Target Compounds	R.T.	QIon	Response	Conc	Units	Qvalue
2) 1,4-Dioxane	2.88	88	17752	15.72	ng/uL	96
4) Benzaldehyde	6.46	77	94792	47.65	ng/ul	99
6) Phenol	6.60	94	168855	41.74	ng/ul	99
8) Bis(2-Chloroethyl)ether	6.75	93	125295	41.36	ng/ul	98
10) 2-Chlorophenol	6.90	128	149636	40.83	ng/ul	99
11) 2-Methylphenol	7.82	108	135222	41.65	ng/ul	100
12) 2,2'-oxybis(1-Chloropropan	7.84	45	112858	41.32	ng/ul#	90
14) Acetophenone	8.12	105	211609	41.98	ng/ul	98
15) N-Nitroso-di-n-propylamine	8.11	70	96734	40.68	ng/ul	98
16) 4-Methylphenol	8.15	108	148578	42.10	ng/ul	99
17) Hexachloroethane	8.35	117	54645	40.10	ng/ul	96
20) Nitrobenzene	8.50	77	138411	40.47	ng/ul	98
21) Isophorone	9.02	82	270754	39.66	ng/ul	100
23) 2-Nitrophenol	9.20	139	87996	40.65	ng/ul	99
24) 2,4-Dimethylphenol	9.31	107	162756	40.40	ng/ul	99
25) Bis(2-Chloroethoxy)methane	9.50	93	171364	39.99	ng/ul	100
27) 2,4-Dichlorophenol	9.79	162	134753	40.68	ng/ul	98
28) Naphthalene	10.11	128	487367	39.52	ng/ul	99
30) 4-Chloroaniline	10.25	127	191983	44.46	ng/ul	98
31) Hexachlorobutadiene	10.39	225	69341	39.83	ng/ul	98
32) Caprolactam	11.00	113	23433	21.44	ng/ul	96
33) 4-Chloro-3-methylphenol	11.47	107	150922	39.23	ng/ul	97
34) 2-Methylnaphthalene	11.74	142	342824	39.01	ng/ul	99

Data Path : Z:\HPCHEM1\BNA_M\DATA\BM030516\
 Data File : BM004560.D
 Acq On : 05 Mar 2016 02:35
 Operator : SJ/UM
 Sample : SSTD04045
 Misc :
 ALS Vial : 6 Sample Multiplier: 1

Instrument :
 BNA_M
 ClientSampleId :
 SSTDIC0.5

Quant Time: Mar 05 04:02:44 2016
 Quant Method : Z:\HPCHEM1\BNA_M\METHODS\SOM02.2-EPA-BM030516.M
 Quant Title : SVOA CALIBRATION
 QLast Update : Sat Mar 05 03:56:31 2016
 Response via : Initial Calibration

Internal Standards	R.T.	QIon	Response	Conc	Units	Dev(Min)
35) 1-Methylnaphthalene	11.97	142	323385	39.19	ng/ul	99
37) 1,2,4,5-Tetrachlorobenzene	12.13	216	137892	40.33	ng/ul	99
38) Hexachlorocyclopentadiene	12.10	237	22430	37.87	ng/ul	93
39) 2,4,6-Trichlorophenol	12.42	196	87756	39.25	ng/ul	98
40) 2,4,5-Trichlorophenol	12.57	196	91724	38.72	ng/ul	99
41) 1,1'-Biphenyl	12.79	154	421085	39.92	ng/ul	100
42) 2-Chloronaphthalene	12.83	162	317719	40.02	ng/ul	98
43) 2-Nitroaniline	13.07	65	76525	41.25	ng/ul	96
45) Dimethylphthalate	13.45	163	390141	39.03	ng/ul	100
46) 2,6-Dinitrotoluene	13.58	165	83721	40.97	ng/ul	97
48) Acenaphthylene	13.69	152	524348	39.50	ng/ul	99
49) 3-Nitroaniline	13.92	138	89821	44.67	ng/ul	98
50) Acenaphthene	14.05	153	350458	39.10	ng/ul	100
51) 2,4-Dinitrophenol	14.16	184	28174	48.39	ng/ul	92
53) 4-Nitrophenol	14.41	109	32850	40.53	ng/ul	87
54) Dibenzofuran	14.39	168	463003	39.18	ng/ul	99
55) 2,4-Dinitrotoluene	14.39	165	115322	40.39	ng/ul	98
56) 2,3,4,6-Tetrachlorophenol	14.66	232	56767	39.17	ng/ul	93
57) Diethylphthalate	14.83	149	401337	38.71	ng/ul	100
59) Fluorene	15.04	166	377386	38.76	ng/ul	100
60) 4-Chlorophenyl-phenylether	15.04	204	162931	38.71	ng/ul	100
61) 4-Nitroaniline	15.10	138	94722	43.52	ng/ul	95
64) 4,6-Dinitro-2-methylphenol	15.17	198	58503	45.42	ng/ul	95
65) N-Nitrosodiphenylamine	15.27	169	327402	40.28	ng/ul	99
66) 4-Bromophenyl-phenylether	15.94	248	96004	40.11	ng/ul	99
67) Hexachlorobenzene	16.06	284	107469	39.59	ng/ul	99
68) Atrazine	16.23	200	101962	40.41	ng/ul	98
69) Pentachlorophenol	16.43	266	20748	32.77	ng/ul	93
70) Phenanthrene	16.79	178	568897	39.40	ng/ul	99
72) Anthracene	16.88	178	582223	39.51	ng/ul	99
73) 1,2,3,4-Tetrachlorobenzene	12.76	216	127168	41.12	ng/uL	99
74) Pentachlorobenzene	14.31	250	123599	40.76	ng/uL	99
75) Carbazole	17.17	167	531777	40.47	ng/ul	100
76) Di-n-butylphthalate	17.73	149	685920	38.53	ng/ul	100
77) Fluoranthene	18.83	202	597740	40.76	ng/ul	99
80) Pyrene	19.19	202	618967	40.74	ng/ul	100
81) Butylbenzylphthalate	20.12	149	305546	39.98	ng/ul	98
82) 3,3'-Dichlorobenzidine	20.91	252	185785	49.60	ng/ul	99
83) Benzo(a)anthracene	20.97	228	550139	39.70	ng/ul	99
84) Bis(2-ethylhexyl)phthalate	20.91	149	430754	38.84	ng/ul	98
85) Chrysene	21.02	228	538970	40.17	ng/ul	99
87) Di-n-octyl phthalate	21.76	149	779204	40.89	ng/ul	98
88) Benzo(b)fluoranthene	22.47	252	570341	40.10	ng/ul	98
89) Benzo(k)fluoranthene	22.51	252	533824	39.73	ng/ul	100
91) Benzo(a)pyrene	23.00	252	549749	40.09	ng/ul	99
92) Indeno(1,2,3-cd)pyrene	25.16	276	629504	39.95	ng/ul	98
93) Dibenzo(a,h)anthracene	25.16	278	523114	40.02	ng/ul	99
94) Benzo(g,h,i)perylene	25.79	276	540485	39.87	ng/ul	98

Data Path : Z:\HPCHEM1\BNA_M\DATA\BM030516\
 Data File : BM004560.D
 Acq On : 05 Mar 2016 02:35
 Operator : SJ/UM
 Sample : SSTD04045
 Misc :
 ALS Vial : 6 Sample Multiplier: 1

Instrument :
 BNA_M
ClientSampleId :
 SSTDIC0.5

Quant Time: Mar 05 04:02:44 2016
 Quant Method : Z:\HPCHEM1\BNA_M\METHODS\SOM02.2-EPA-BM030516.M
 Quant Title : SVOA CALIBRATION
 QLast Update : Sat Mar 05 03:56:31 2016
 Response via : Initial Calibration

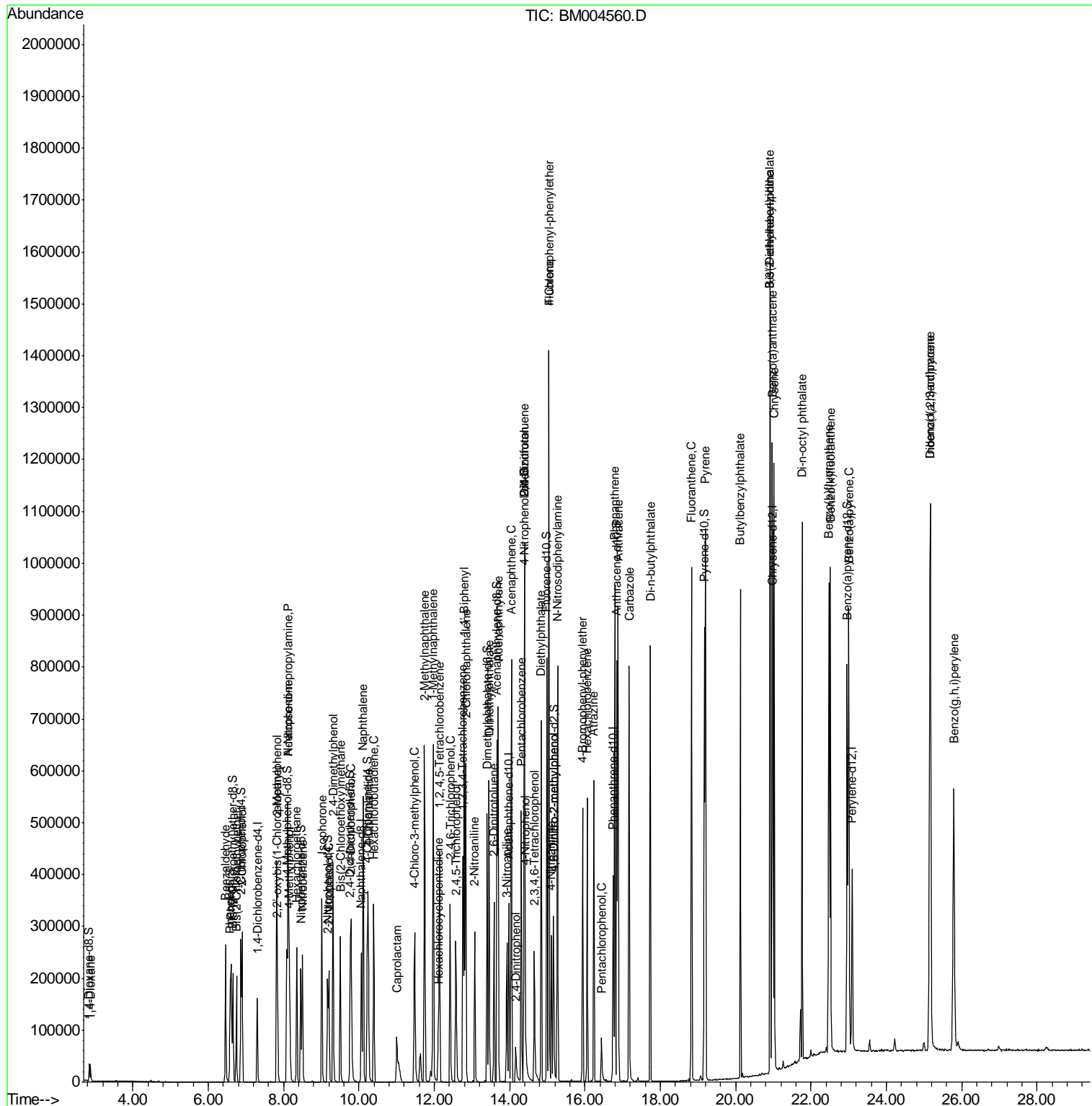
Internal Standards	R.T.	QIon	Response	Conc	Units	Dev(Min)

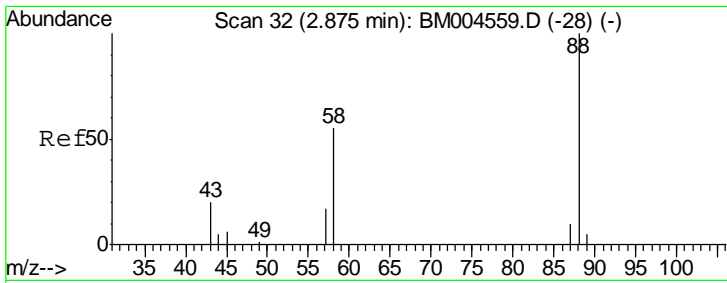
(#) = qualifier out of range (m) = manual integration (+) = signals summed						

Data Path : Z:\HPCHEM1\BNA_M\DATA\BM030516\
 Data File : BM004560.D
 Acq On : 05 Mar 2016 02:35
 Operator : SJ/UM
 Sample : SSTD04045
 Misc :
 ALS Vial : 6 Sample Multiplier: 1

Instrument :
 BNA_M
 Client Sampled :
 SSTDIC0.5

Quant Time: Mar 05 04:02:44 2016
 Quant Method : Z:\HPCHEM1\BNA_M\METHODS\SOM02.2-EPA-BM030516.M
 Quant Title : SVOA CALIBRATION
 QLast Update : Sat Mar 05 03:56:31 2016
 Response via : Initial Calibration

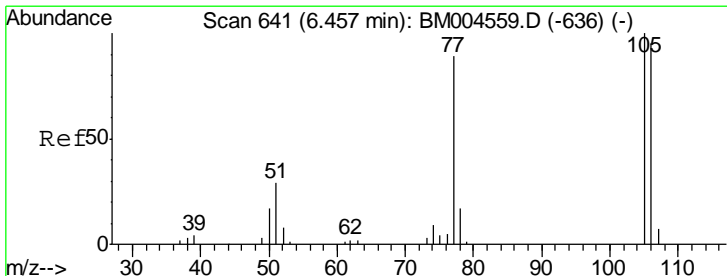
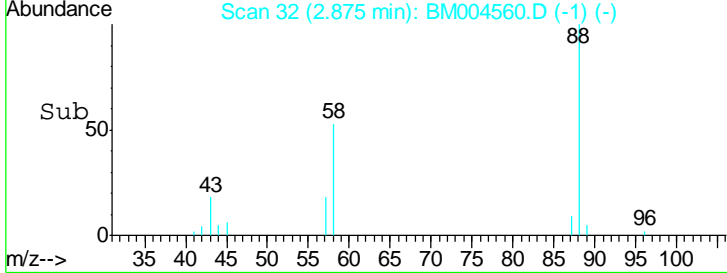
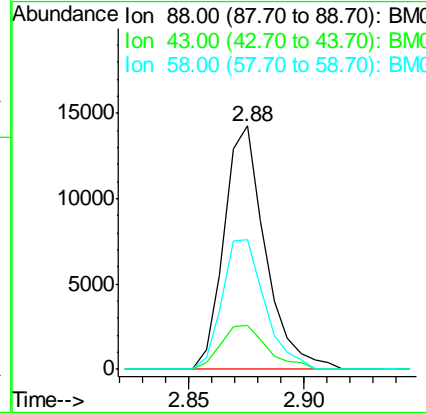
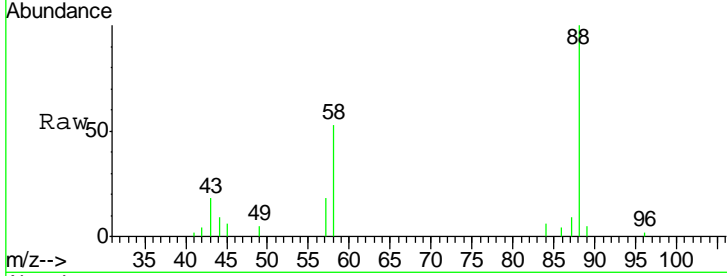




#2
 1,4-Dioxane
 Concen: 15.72 ng/uL
 RT: 2.88 min Scan# 32
 Delta R.T. -0.00 min
 Lab File: BM004560.D
 Acq: 05 Mar 2016 02:35

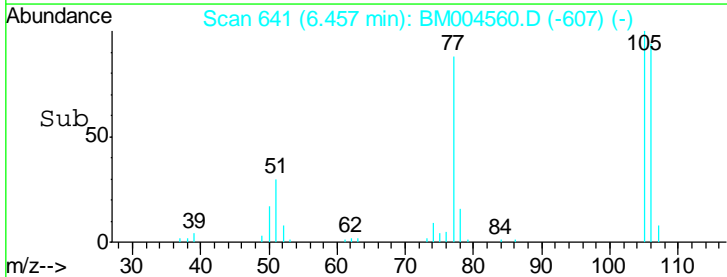
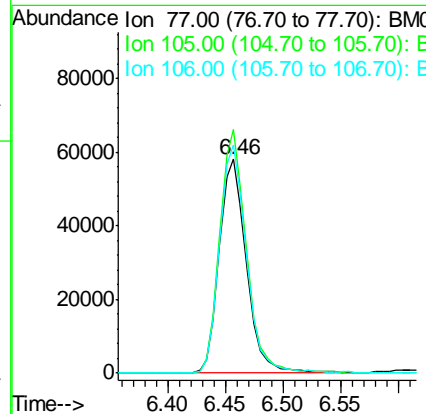
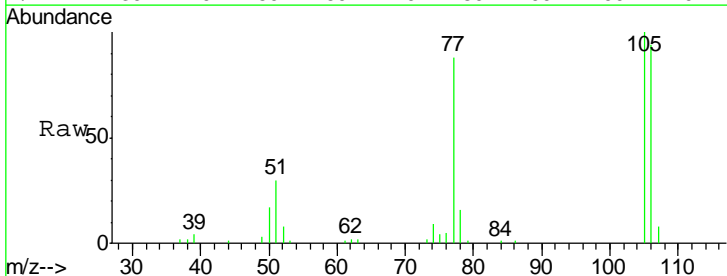
Instrument :
 BNA_M
 ClientSampled :
 SSTDICC0.5

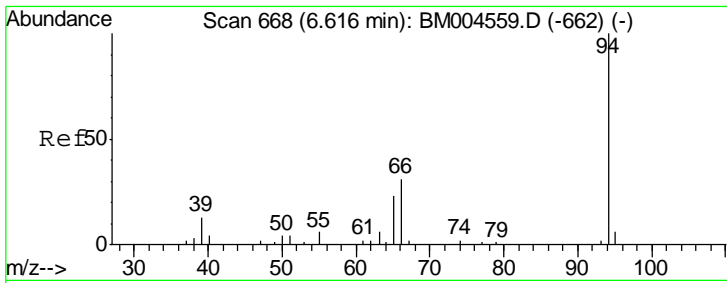
Tgt Ion	Resp	Lower	Upper
88	17752		
43	20.5	15.3	22.9
58	54.8	41.0	61.6



#4
 Benzaldehyde
 Concen: 47.65 ng/uL
 RT: 6.46 min Scan# 641
 Delta R.T. -0.00 min
 Lab File: BM004560.D
 Acq: 05 Mar 2016 02:35

Tgt Ion	Resp	Lower	Upper
77	94792		
105	114.0	90.3	135.5
106	106.8	86.1	129.1

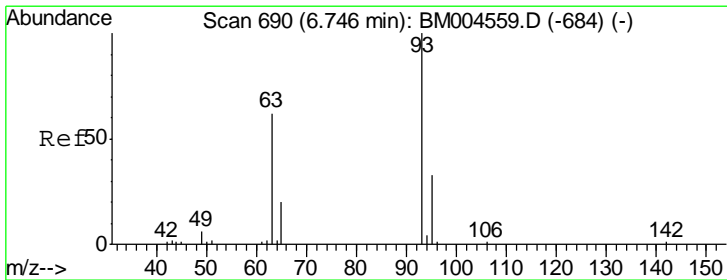
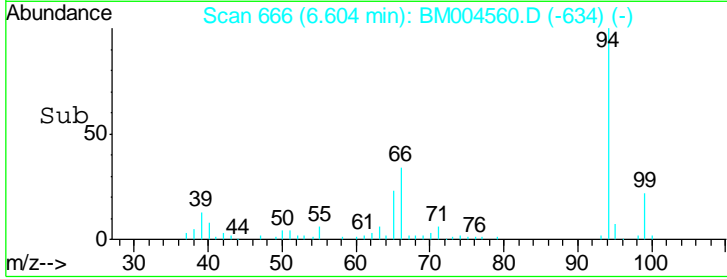
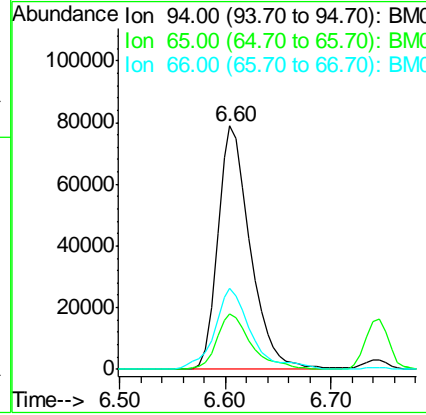
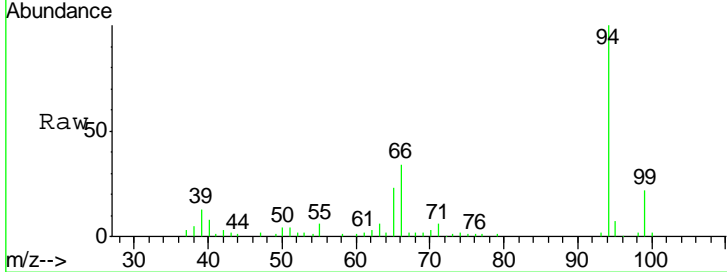




#6
 Phenol
 Concen: 41.74 ng/ul
 RT: 6.60 min Scan# 666
 Delta R.T. -0.01 min
 Lab File: BM004560.D
 Acq: 05 Mar 2016 02:35

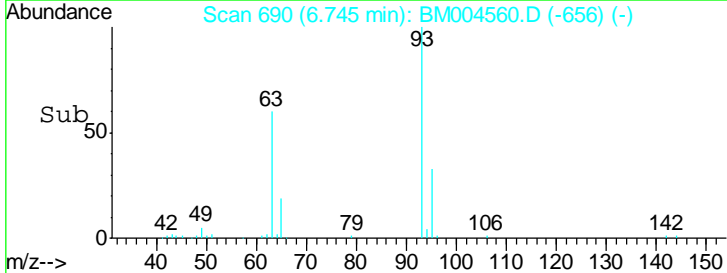
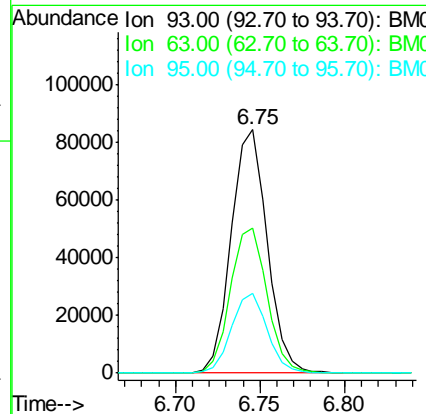
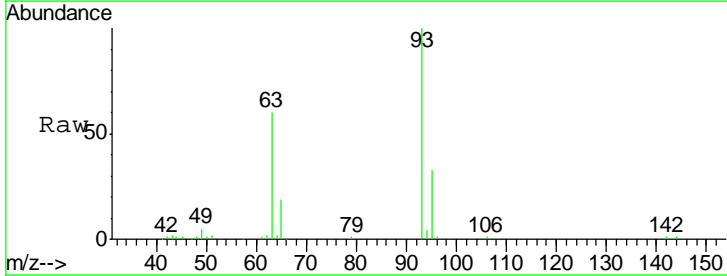
Instrument :
 BNA_M
 ClientSampled :
 SSTDICC0.5

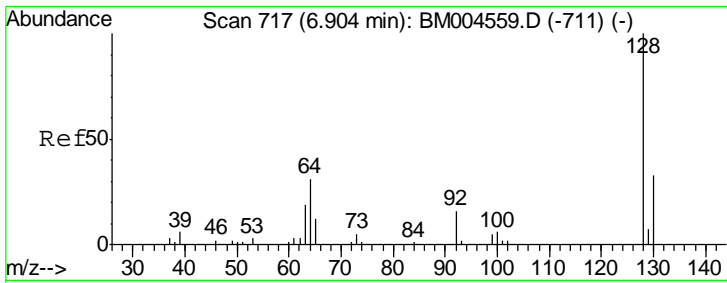
Tgt Ion	Resp	Lower	Upper
94	168855		
65	22.9	18.5	27.7
66	33.5	27.4	41.2



#8
 Bis(2-Chloroethyl)ether
 Concen: 41.36 ng/ul
 RT: 6.75 min Scan# 690
 Delta R.T. -0.00 min
 Lab File: BM004560.D
 Acq: 05 Mar 2016 02:35

Tgt Ion	Resp	Lower	Upper
93	125295		
63	59.7	49.3	73.9
95	33.0	26.5	39.7

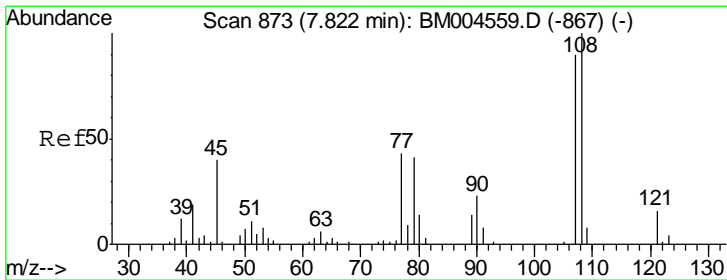
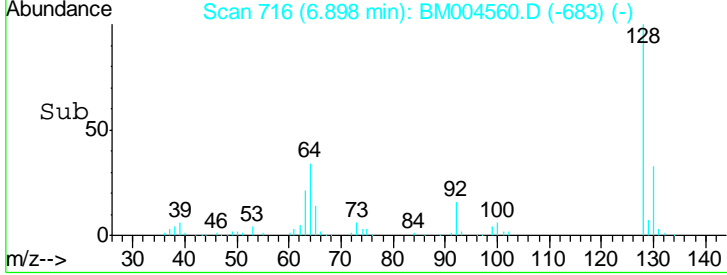
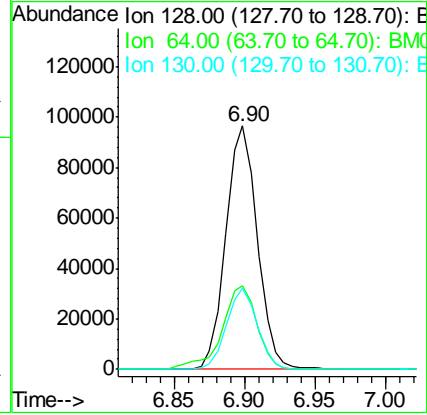
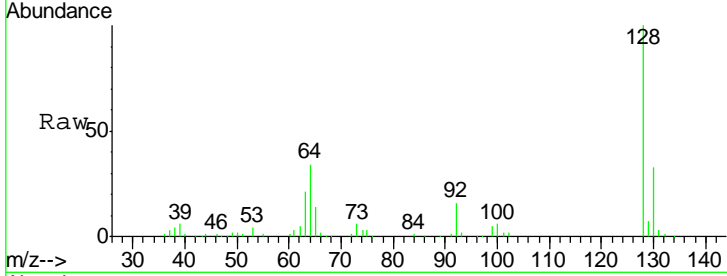




#10
 2-Chlorophenol
 Concen: 40.83 ng/ul
 RT: 6.90 min Scan# 716
 Delta R.T. -0.01 min
 Lab File: BM004560.D
 Acq: 05 Mar 2016 02:35

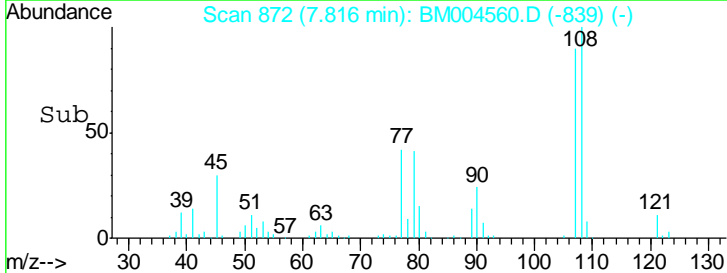
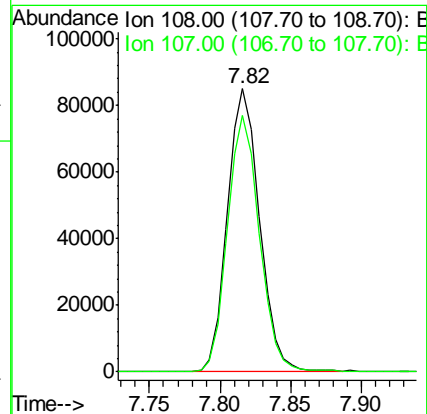
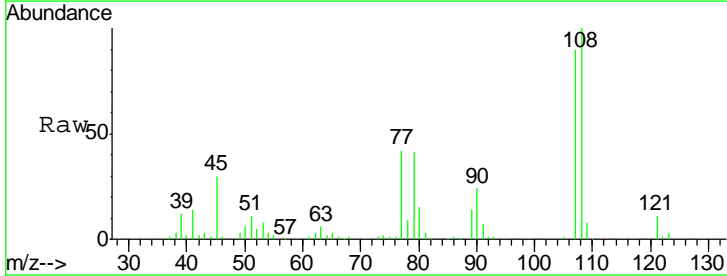
Instrument :
 BNA_M
ClientSampled :
 SSTDICC0.5

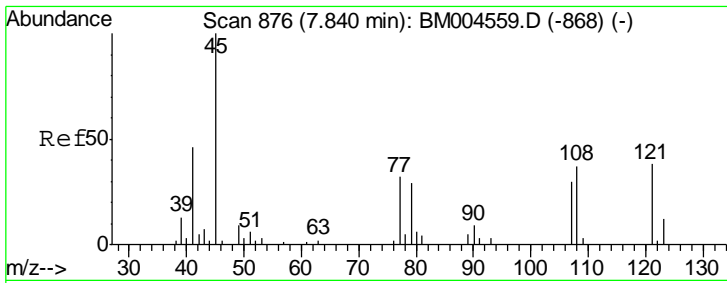
Tgt Ion	Resp	Lower	Upper
128	149636		
64	34.2	27.6	41.4
130	33.3	26.2	39.4



#11
 2-Methylphenol
 Concen: 41.65 ng/ul
 RT: 7.82 min Scan# 872
 Delta R.T. -0.01 min
 Lab File: BM004560.D
 Acq: 05 Mar 2016 02:35

Tgt Ion	Resp	Lower	Upper
108	135222		
107	90.4	72.2	108.2

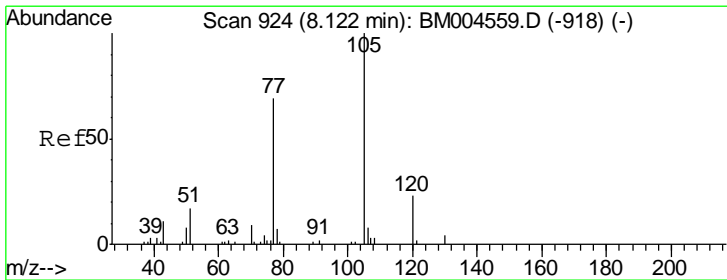
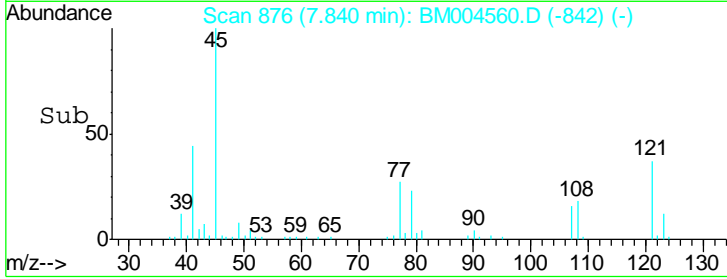
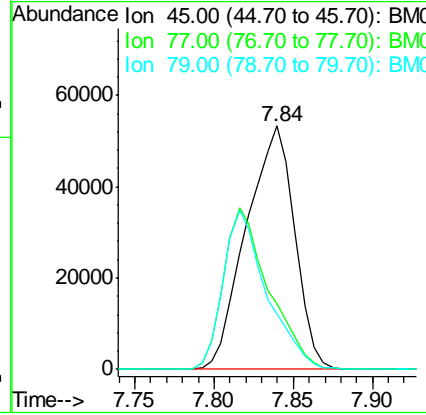
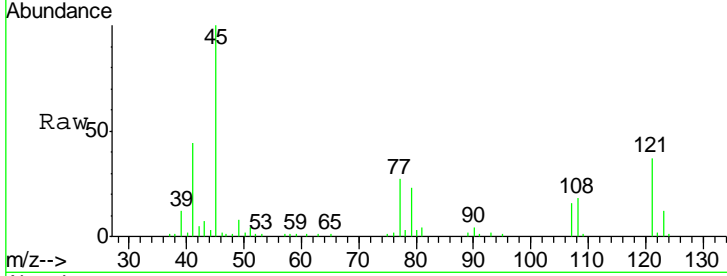




#12
 2,2'-oxybis(1-Chloropropane)
 Concen: 41.32 ng/ul
 RT: 7.84 min Scan# 876
 Delta R.T. -0.00 min
 Lab File: BM004560.D
 Acq: 05 Mar 2016 02:35

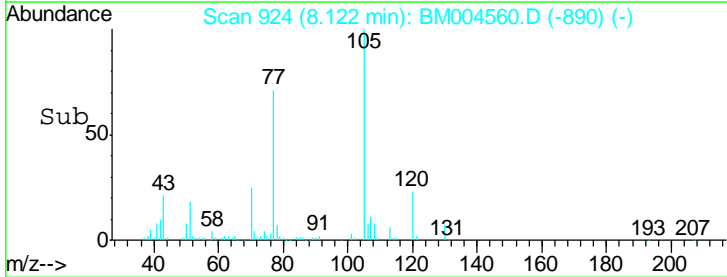
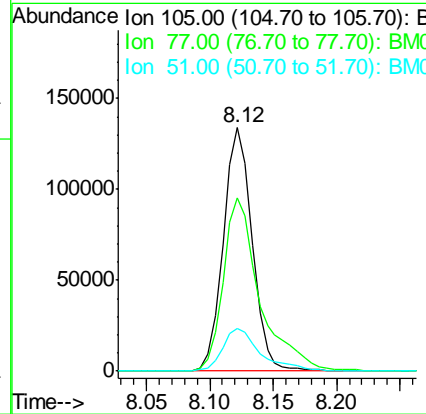
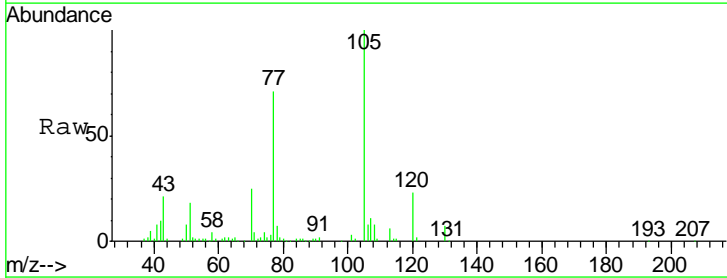
Instrument :
 BNA_M
 ClientSampleId :
 SSTDICC0.5

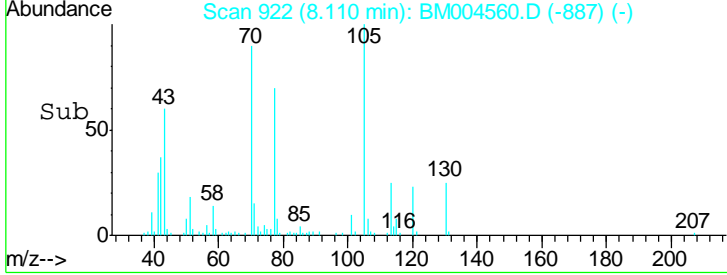
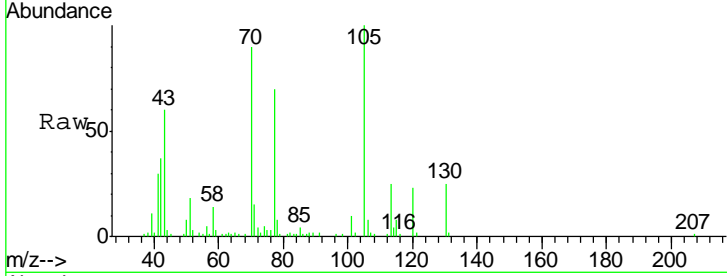
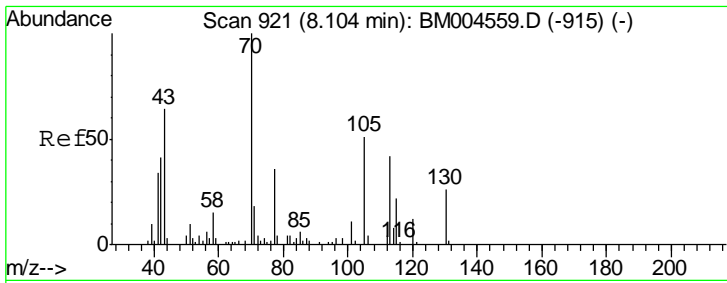
Tgt Ion	Resp	Lower	Upper
45	112858		
77	27.0	25.8	38.6
79	23.0	23.0	34.6#



#14
 Acetophenone
 Concen: 41.98 ng/ul
 RT: 8.12 min Scan# 924
 Delta R.T. -0.00 min
 Lab File: BM004560.D
 Acq: 05 Mar 2016 02:35

Tgt Ion	Resp	Lower	Upper
105	211609		
77	70.9	55.1	82.7
51	17.7	13.9	20.9



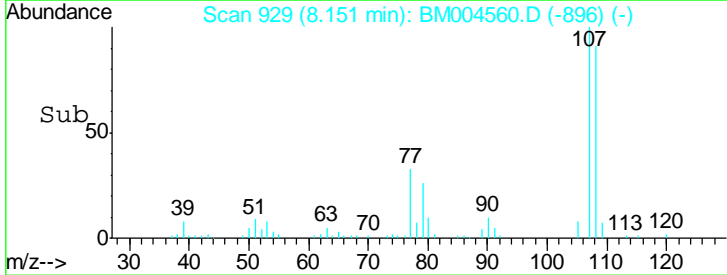
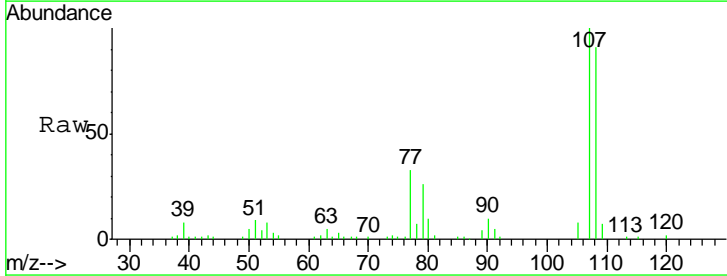
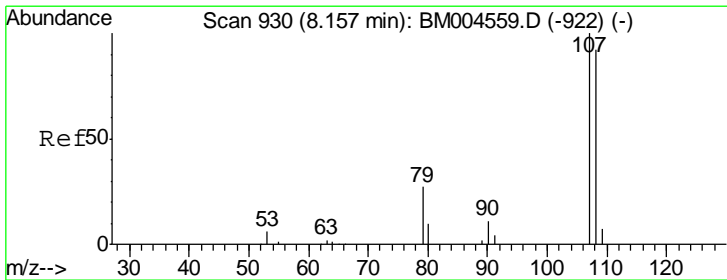
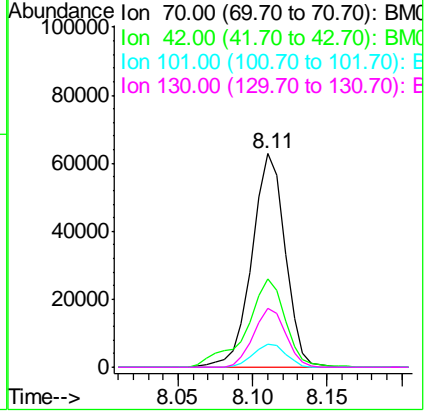


#15
 N-Nitroso-di-n-propylamine
 Concen: 40.68 ng/ul
 RT: 8.11 min Scan# 922
 Delta R.T. 0.01 min
 Lab File: BM004560.D
 Acq: 05 Mar 2016 02:35

Instrument :
 BNA_M
ClientSampled :
 SSTDICC0.5

Tgt Ion: 70 Resp: 96734

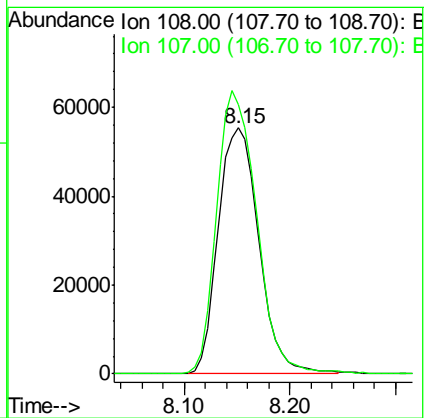
Ion	Ratio	Lower	Upper
70	100		
42	41.1	33.8	50.8
101	11.1	8.9	13.3
130	27.6	20.5	30.7

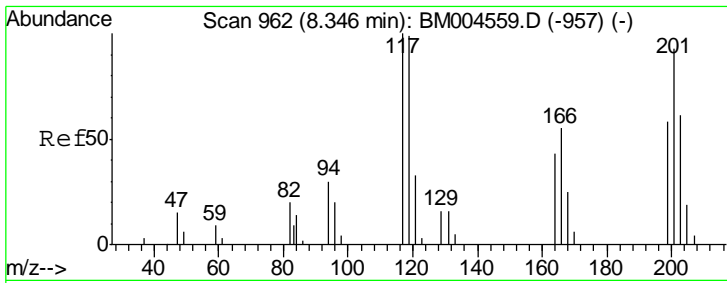


#16
 4-Methylphenol
 Concen: 42.10 ng/ul
 RT: 8.15 min Scan# 929
 Delta R.T. -0.01 min
 Lab File: BM004560.D
 Acq: 05 Mar 2016 02:35

Tgt Ion: 108 Resp: 148578

Ion	Ratio	Lower	Upper
108	100		
107	109.6	87.1	130.7

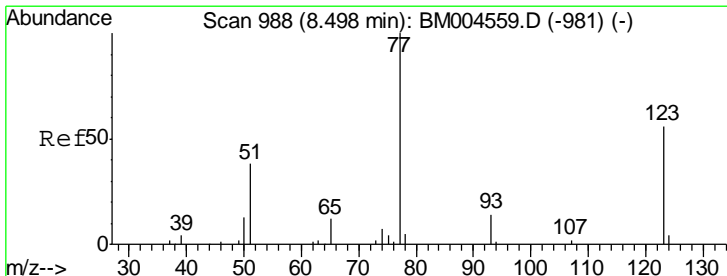
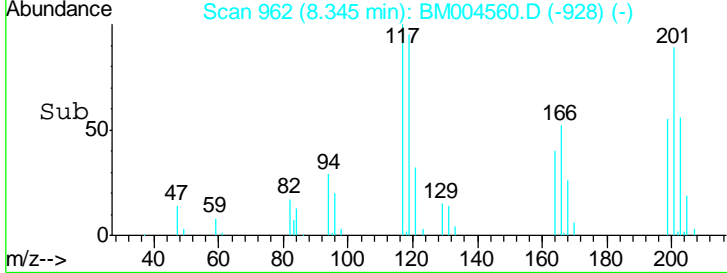
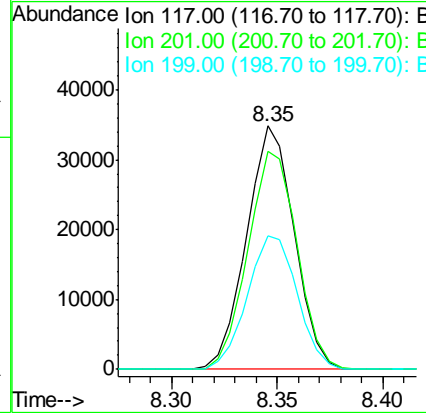
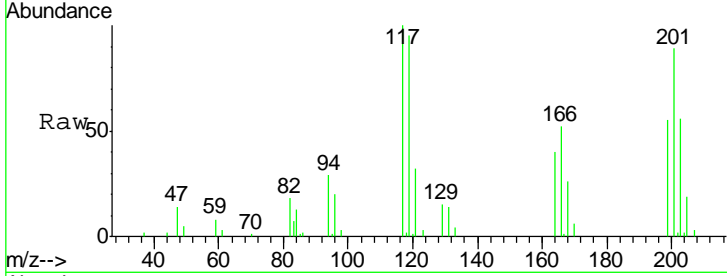




#17
 Hexachloroethane
 Concen: 40.10 ng/ul
 RT: 8.35 min Scan# 962
 Delta R.T. -0.00 min
 Lab File: BM004560.D
 Acq: 05 Mar 2016 02:35

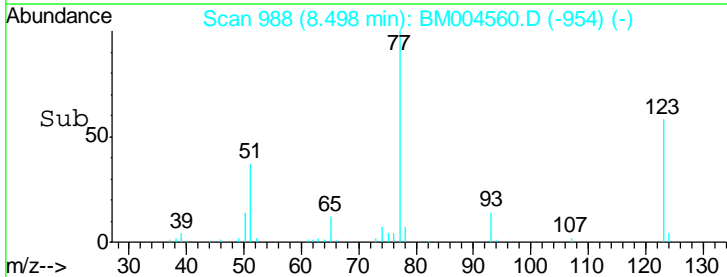
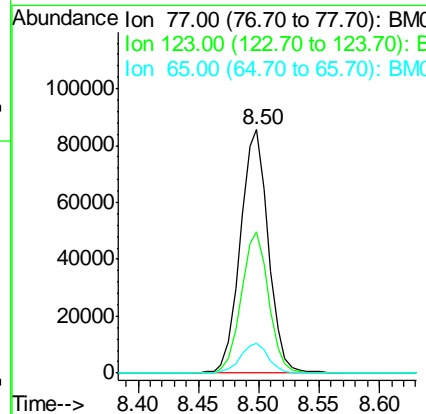
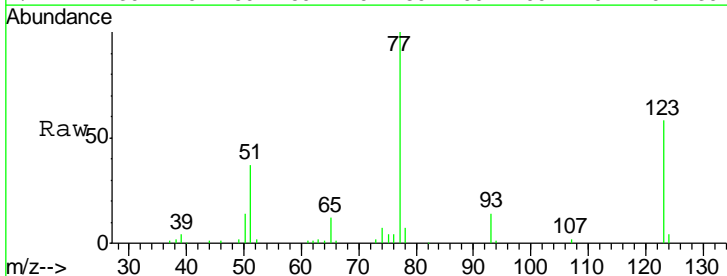
Instrument :
 BNA_M
 ClientSampleID :
 SSTDICC0.5

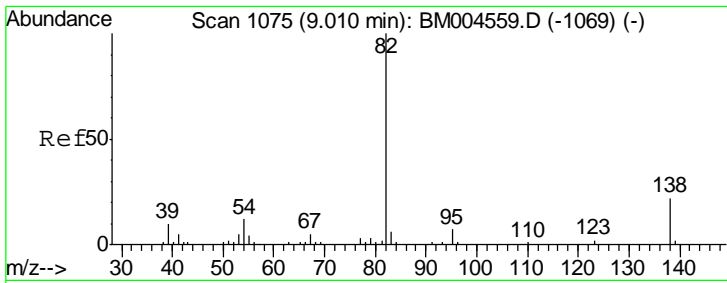
Tgt Ion	Resp	Lower	Upper
117	100		
201	89.3	74.1	111.1
199	55.0	46.7	70.1



#20
 Nitrobenzene
 Concen: 40.47 ng/ul
 RT: 8.50 min Scan# 988
 Delta R.T. -0.00 min
 Lab File: BM004560.D
 Acq: 05 Mar 2016 02:35

Tgt Ion	Resp	Lower	Upper
77	100		
123	57.9	44.7	67.1
65	12.3	9.9	14.9

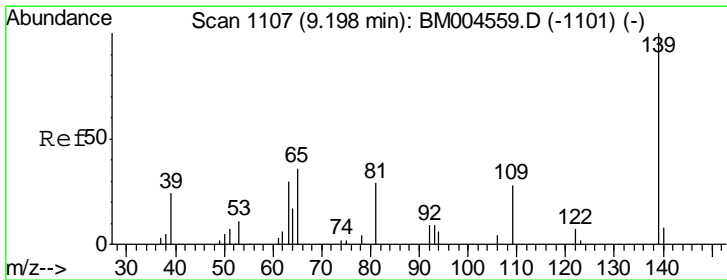
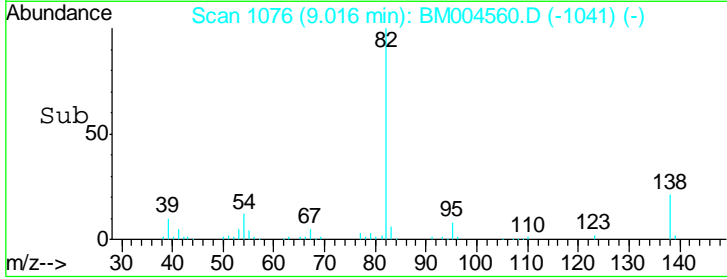
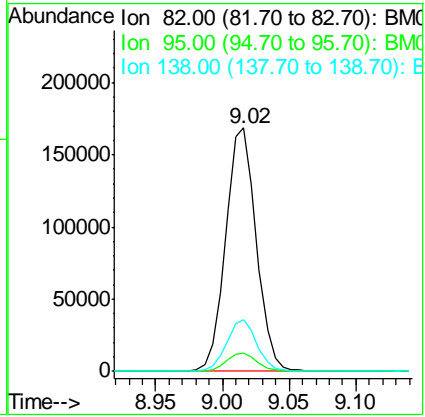
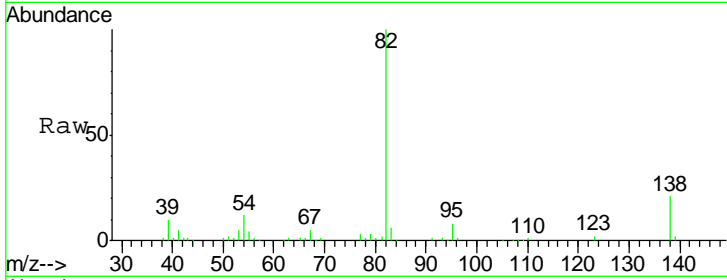




#21
 Isophorone
 Concen: 39.66 ng/ul
 RT: 9.02 min Scan# 1076
 Delta R.T. 0.01 min
 Lab File: BM004560.D
 Acq: 05 Mar 2016 02:35

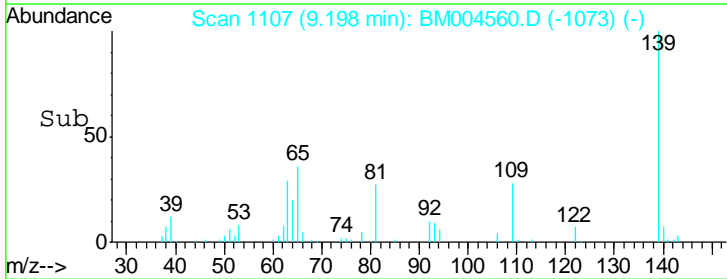
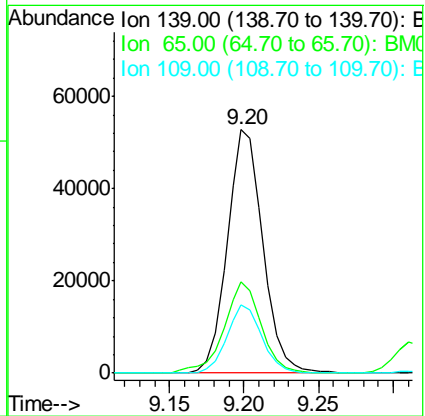
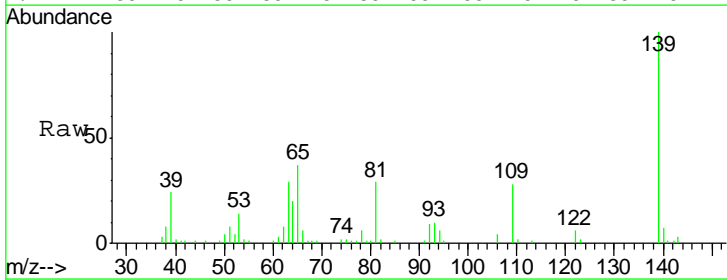
Instrument :
 BNA_M
 ClientSampled :
 SSTDICC0.5

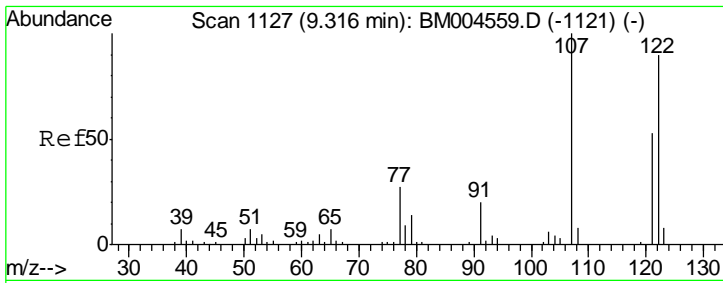
Tgt Ion	Resp	Lower	Upper
82	100		
95	7.6	6.0	9.0
138	21.4	17.2	25.8



#23
 2-Nitrophenol
 Concen: 40.65 ng/ul
 RT: 9.20 min Scan# 1107
 Delta R.T. -0.00 min
 Lab File: BM004560.D
 Acq: 05 Mar 2016 02:35

Tgt Ion	Resp	Lower	Upper
139	100		
65	37.4	30.5	45.7
109	27.8	22.2	33.2

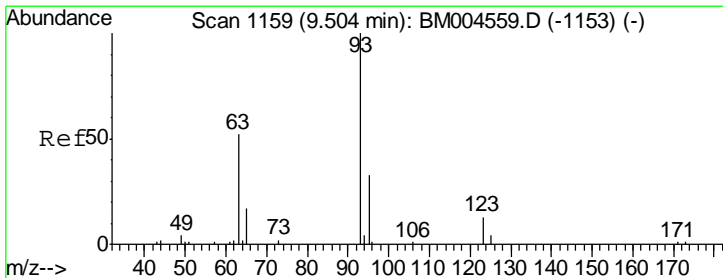
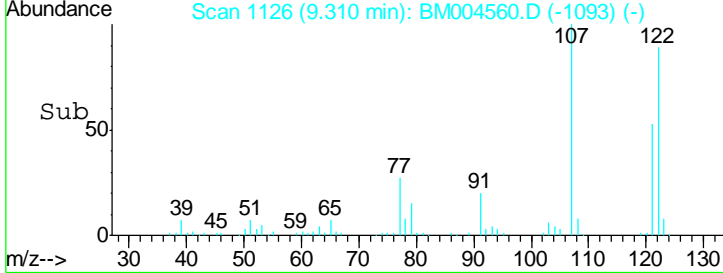
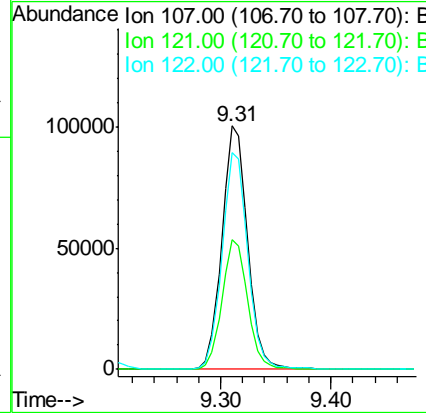
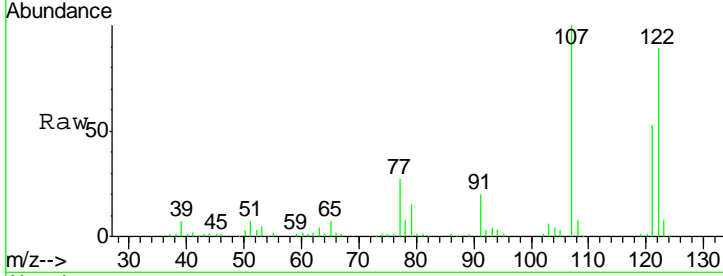




#24
 2,4-Dimethylphenol
 Concen: 40.40 ng/ul
 RT: 9.31 min Scan# 1126
 Delta R.T. -0.01 min
 Lab File: BM004560.D
 Acq: 05 Mar 2016 02:35

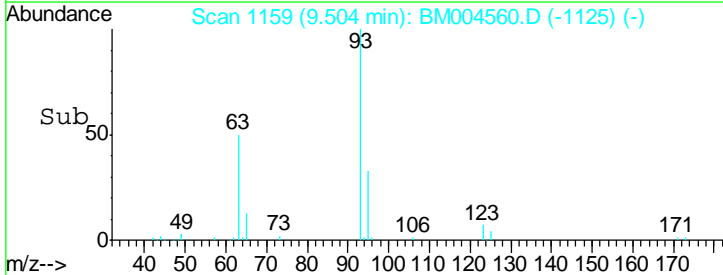
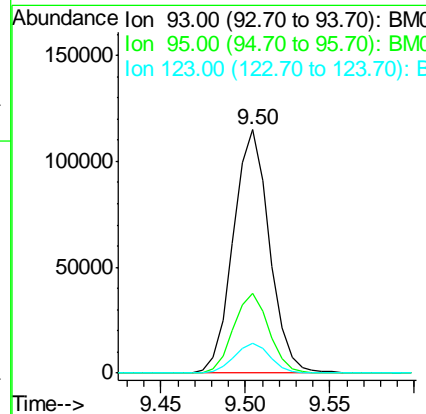
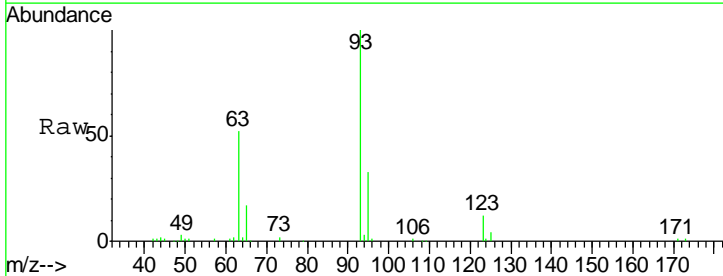
Instrument :
 BNA_M
 ClientSampled :
 SSTDICC0.5

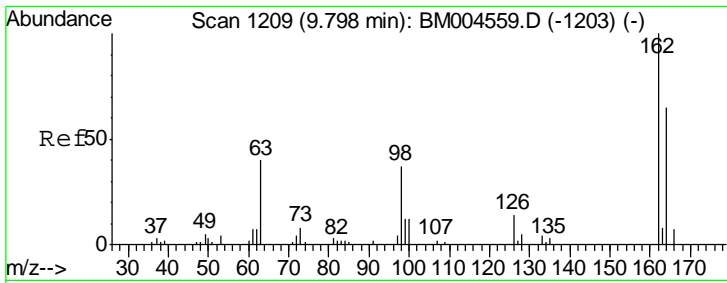
Tgt Ion	Resp	Lower	Upper
107	162756		
107	100		
121	53.4	42.7	64.1
122	88.8	71.7	107.5



#25
 Bis(2-Chloroethoxy)methane
 Concen: 39.99 ng/ul
 RT: 9.50 min Scan# 1159
 Delta R.T. -0.00 min
 Lab File: BM004560.D
 Acq: 05 Mar 2016 02:35

Tgt Ion	Resp	Lower	Upper
93	171364		
93	100		
95	32.7	26.2	39.4
123	12.3	10.1	15.1

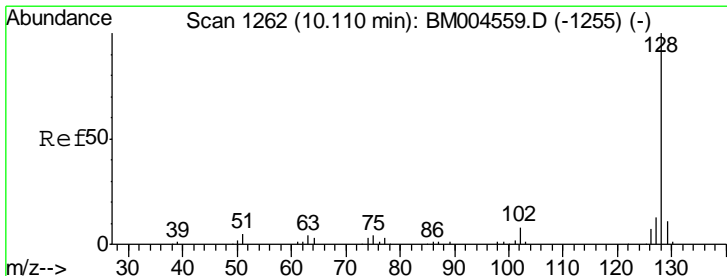
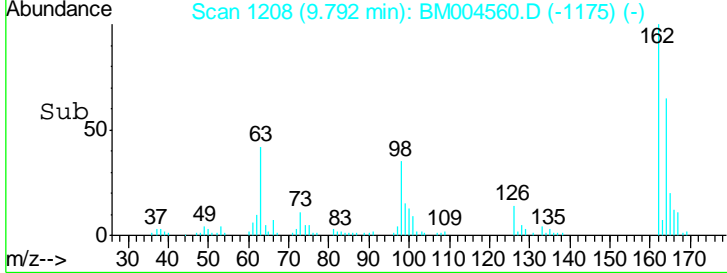
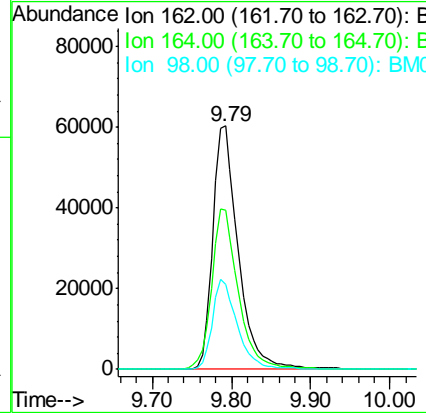
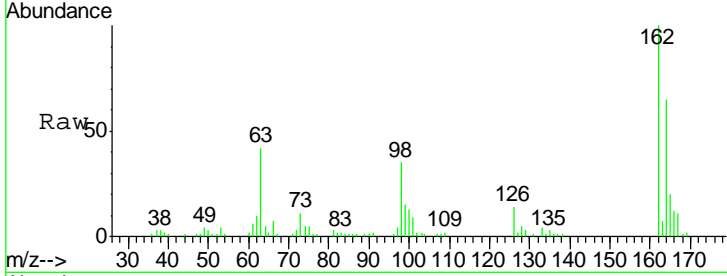




#27
 2,4-Dichlorophenol
 Concen: 40.68 ng/ul
 RT: 9.79 min Scan# 1208
 Delta R.T. -0.01 min
 Lab File: BM004560.D
 Acq: 05 Mar 2016 02:35

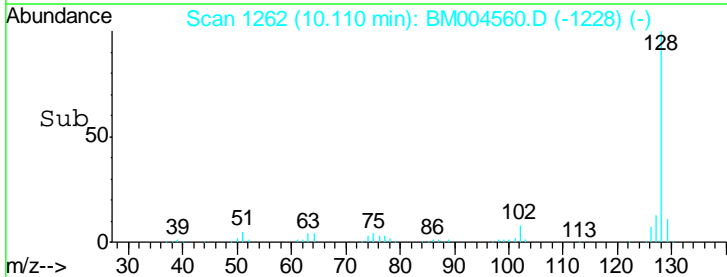
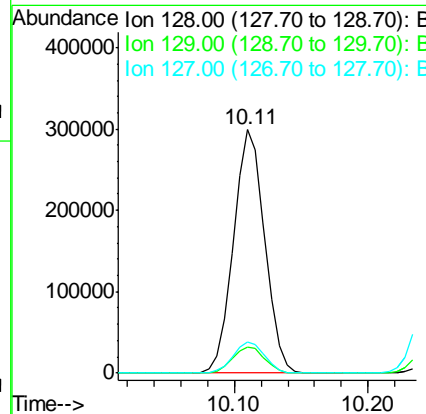
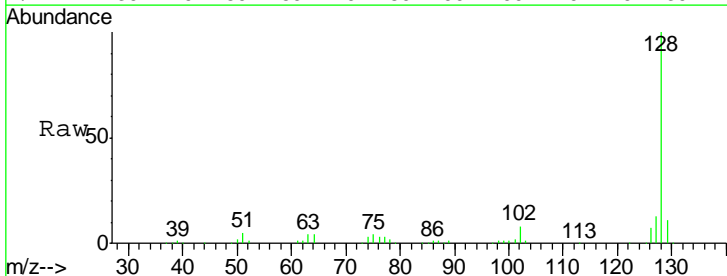
Instrument :
 BNA_M
ClientSampled :
 SSTDICC0.5

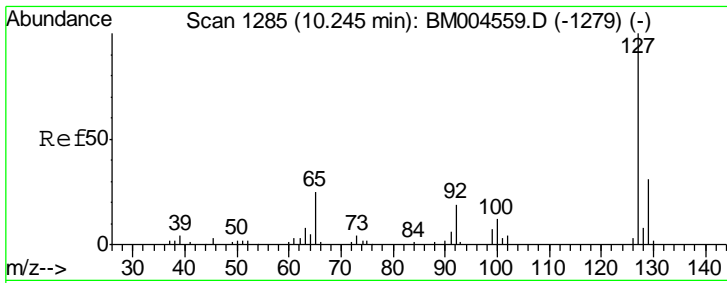
Tgt Ion	Resp	Lower	Upper
162	134753		
164	65.2	53.4	80.2
98	35.0	29.5	44.3



#28
 Naphthalene
 Concen: 39.52 ng/ul
 RT: 10.11 min Scan# 1262
 Delta R.T. -0.00 min
 Lab File: BM004560.D
 Acq: 05 Mar 2016 02:35

Tgt Ion	Resp	Lower	Upper
128	487367		
129	10.6	8.9	13.3
127	12.9	10.7	16.1

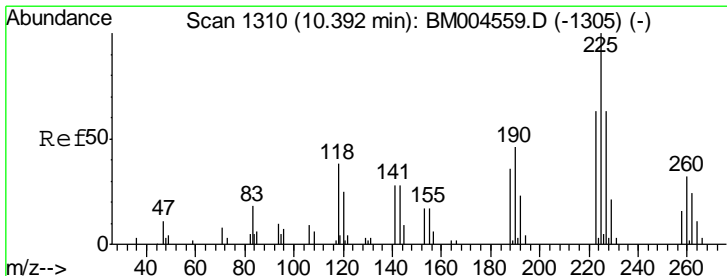
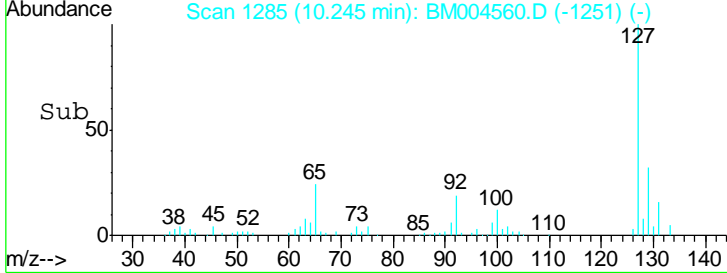
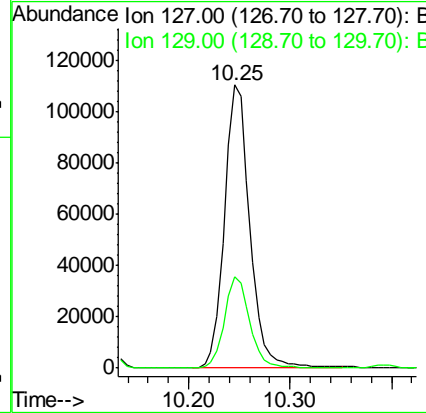
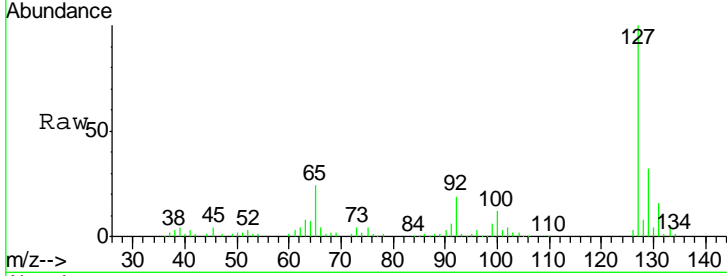




#30
 4-Chloroaniline
 Concen: 44.46 ng/ul
 RT: 10.25 min Scan# 1285
 Delta R.T. -0.00 min
 Lab File: BM004560.D
 Acq: 05 Mar 2016 02:35

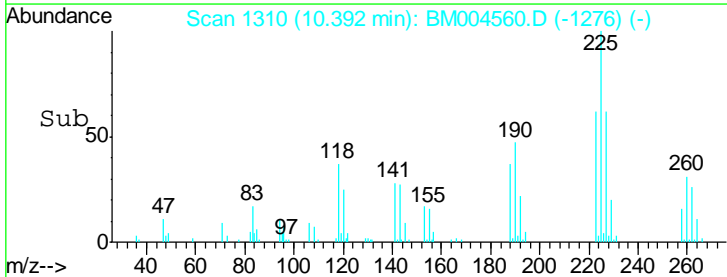
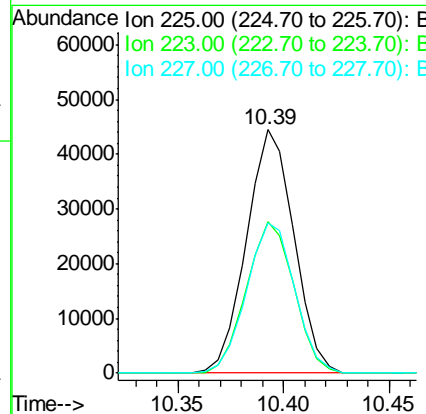
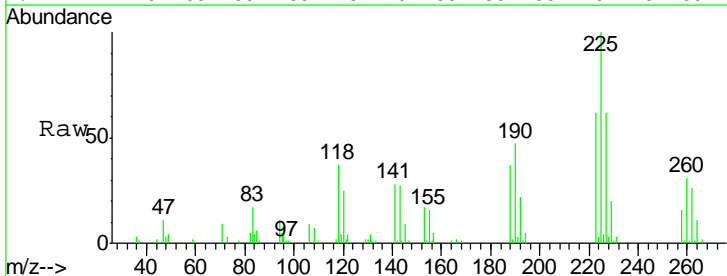
Instrument :
 BNA_M
 ClientSampled :
 SSTDICC0.5

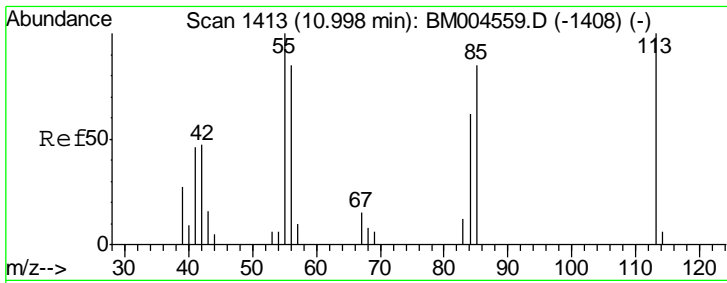
Tgt Ion:127 Resp: 191983
 Ion Ratio Lower Upper
 127 100
 129 32.4 25.0 37.6



#31
 Hexachlorobutadiene
 Concen: 39.83 ng/ul
 RT: 10.39 min Scan# 1310
 Delta R.T. -0.00 min
 Lab File: BM004560.D
 Acq: 05 Mar 2016 02:35

Tgt Ion:225 Resp: 69341
 Ion Ratio Lower Upper
 225 100
 223 62.0 50.6 76.0
 227 61.5 50.6 75.8

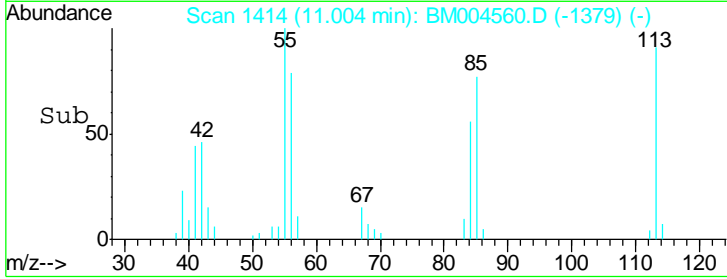
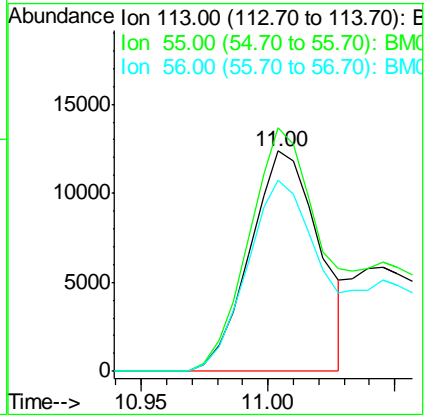
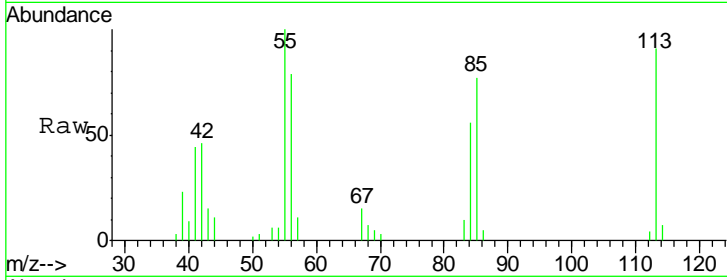




#32
 Caprolactam
 Concen: 21.44 ng/ul
 RT: 11.00 min Scan# 1414
 Delta R.T. 0.01 min
 Lab File: BM004560.D
 Acq: 05 Mar 2016 02:35

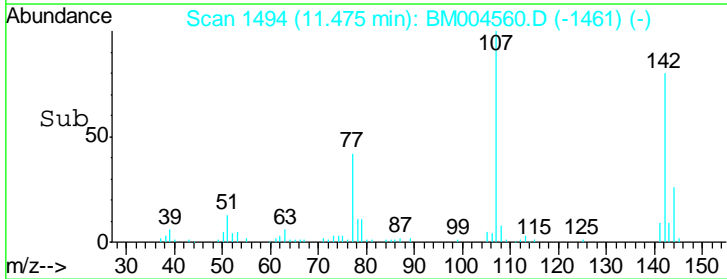
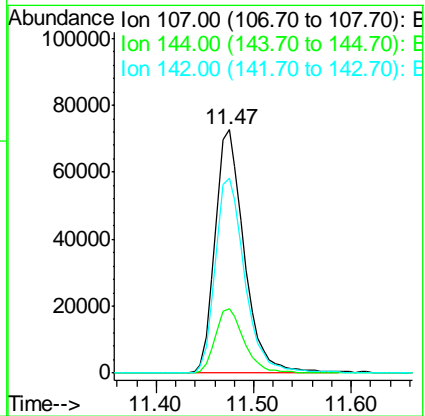
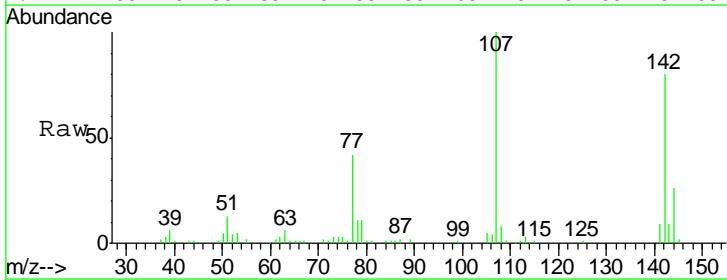
Instrument :
 BNA_M
 ClientSampled :
 SSTDICC0.5

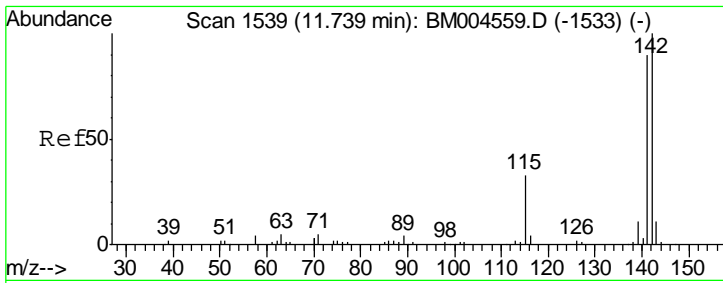
Tgt Ion	Resp	Lower	Upper
113	23433		
55	110.4	84.5	126.7
56	87.0	67.9	101.9



#33
 4-Chloro-3-methylphenol
 Concen: 39.23 ng/ul
 RT: 11.47 min Scan# 1494
 Delta R.T. -0.01 min
 Lab File: BM004560.D
 Acq: 05 Mar 2016 02:35

Tgt Ion	Resp	Lower	Upper
107	150922		
144	26.2	19.9	29.9
142	80.3	62.3	93.5

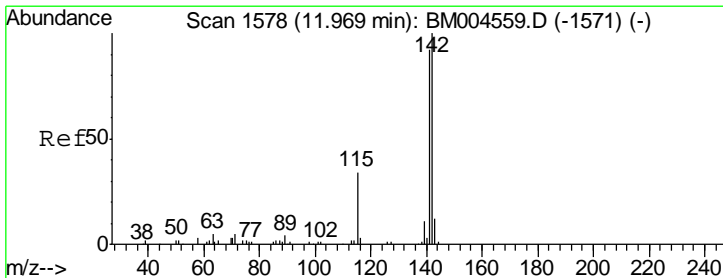
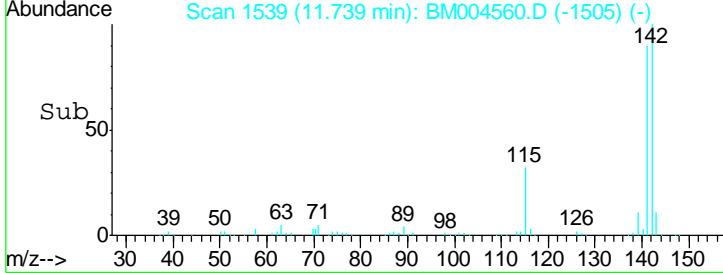
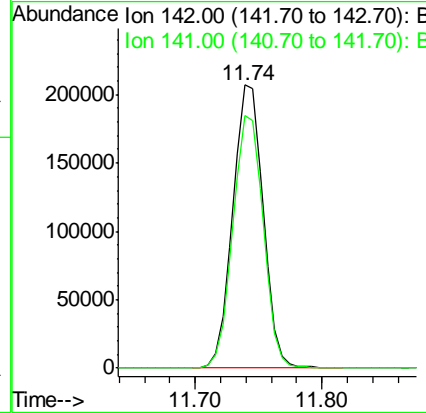
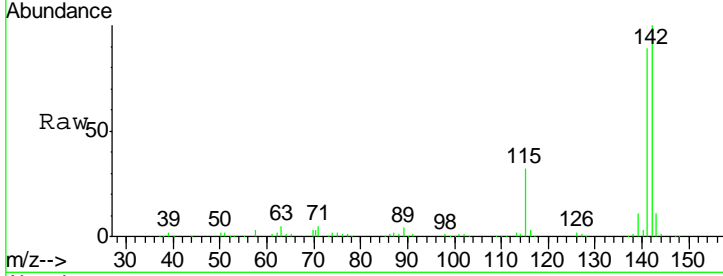




#34
 2-Methylnaphthalene
 Concen: 39.01 ng/ul
 RT: 11.74 min Scan# 1539
 Delta R.T. -0.00 min
 Lab File: BM004560.D
 Acq: 05 Mar 2016 02:35

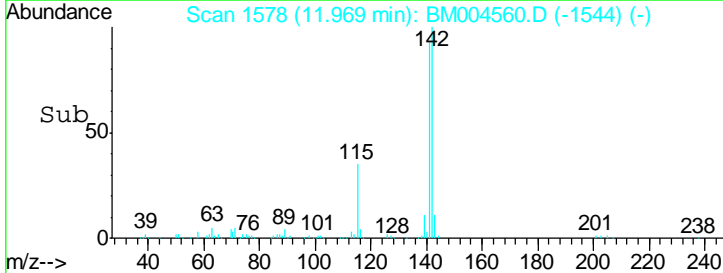
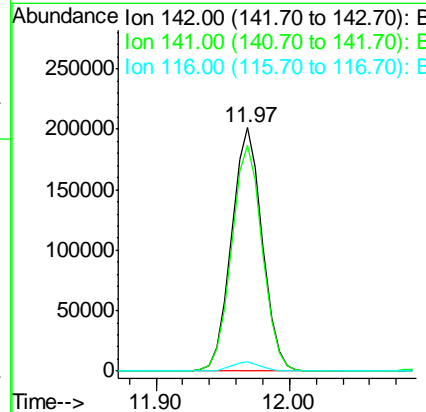
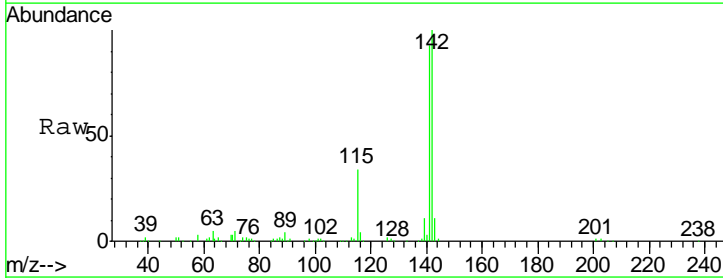
Instrument :
 BNA_M
 ClientSampled :
 SSTDICC0.5

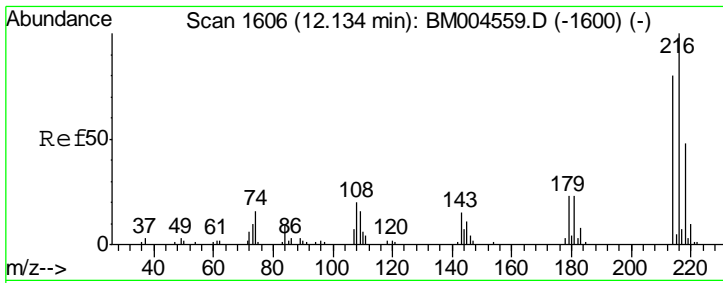
Tgt Ion:142 Resp: 342824
 Ion Ratio Lower Upper
 142 100
 141 89.2 72.2 108.4



#35
 1-Methylnaphthalene
 Concen: 39.19 ng/ul
 RT: 11.97 min Scan# 1578
 Delta R.T. -0.00 min
 Lab File: BM004560.D
 Acq: 05 Mar 2016 02:35

Tgt Ion:142 Resp: 323385
 Ion Ratio Lower Upper
 142 100
 141 92.9 73.8 110.8
 116 3.6 2.7 4.1

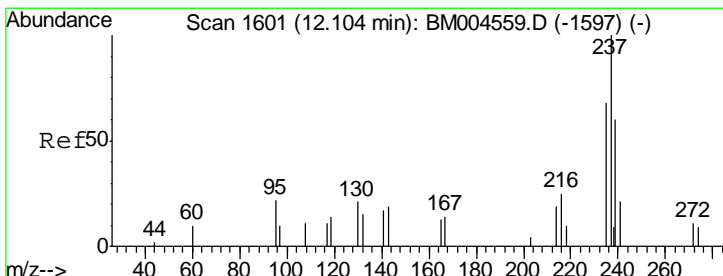
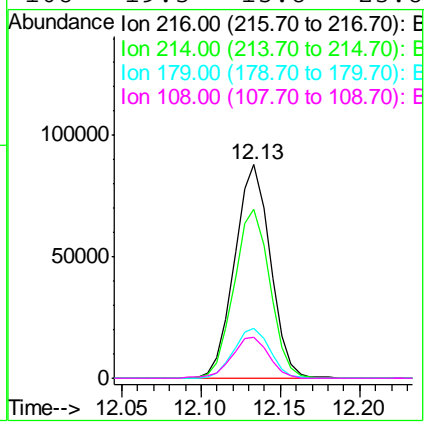
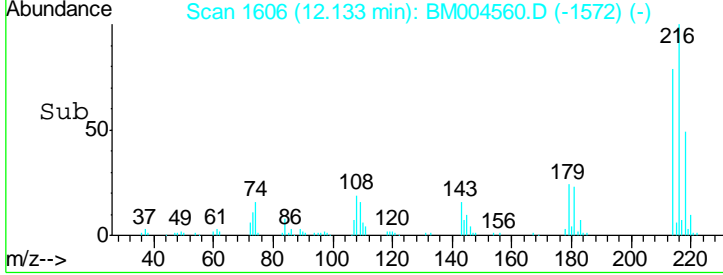
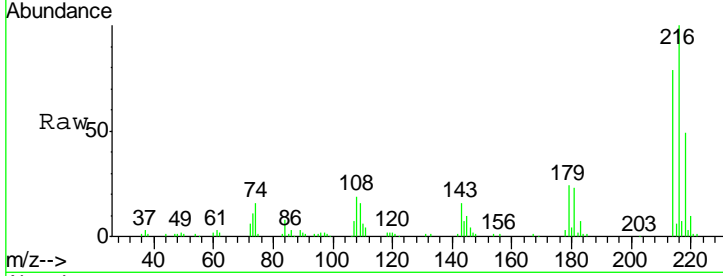




#37
 1,2,4,5-Tetrachlorobenzene
 Concen: 40.33 ng/ul
 RT: 12.13 min Scan# 1606
 Delta R.T. -0.00 min
 Lab File: BM004560.D
 Acq: 05 Mar 2016 02:35

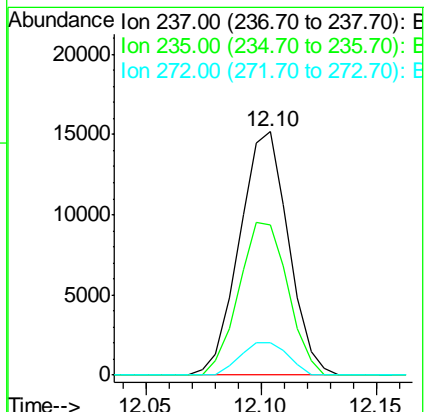
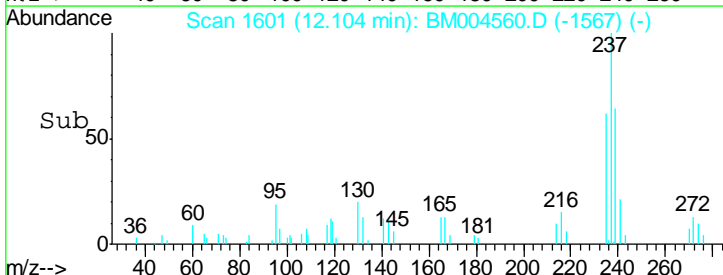
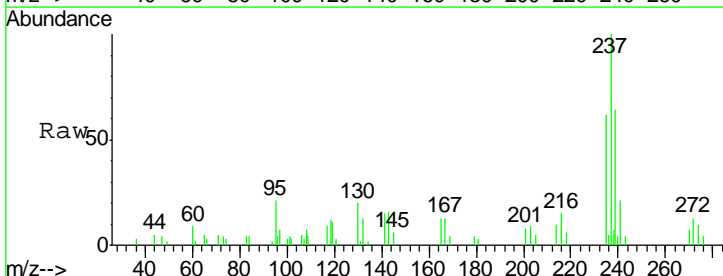
Instrument :
 BNA_M
 ClientSampled :
 SSTDICC0.5

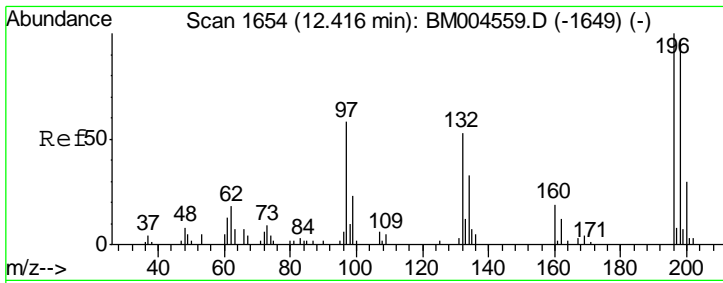
Tgt Ion	Resp	Lower	Upper
216	137892		
214	79.1	64.2	96.4
179	23.6	18.7	28.1
108	19.3	15.8	23.8



#38
 Hexachlorocyclopentadiene
 Concen: 37.87 ng/ul
 RT: 12.10 min Scan# 1601
 Delta R.T. -0.00 min
 Lab File: BM004560.D
 Acq: 05 Mar 2016 02:35

Tgt Ion	Resp	Lower	Upper
237	22430		
235	61.7	54.4	81.6
272	13.4	9.2	13.8

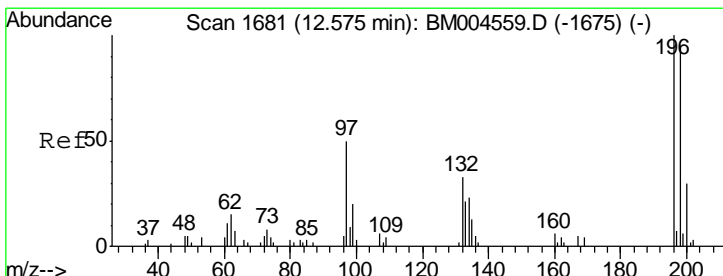
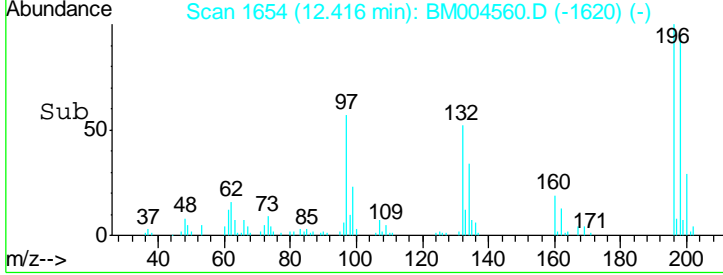
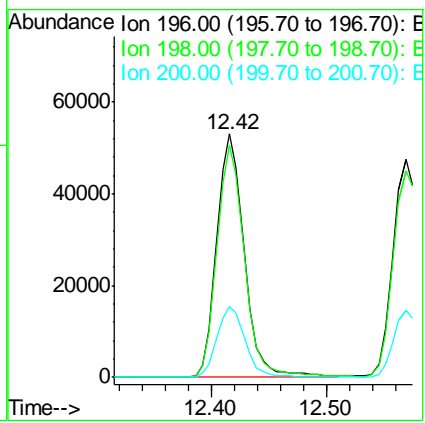
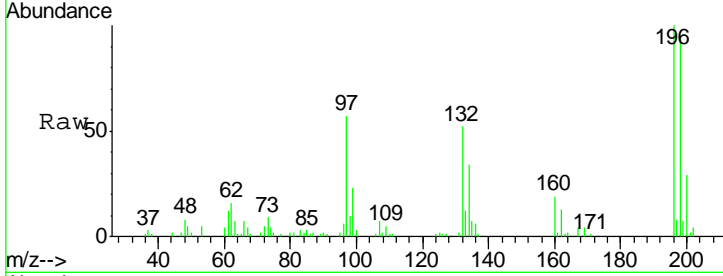




#39
 2,4,6-Trichlorophenol
 Concen: 39.25 ng/ul
 RT: 12.42 min Scan# 1654
 Delta R.T. -0.00 min
 Lab File: BM004560.D
 Acq: 05 Mar 2016 02:35

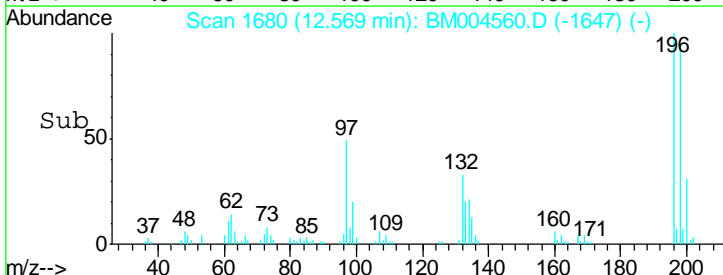
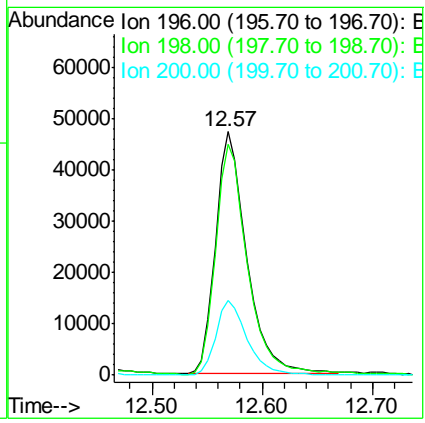
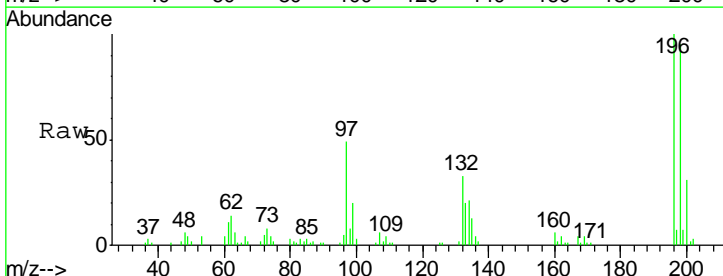
Instrument :
 BNA_M
 ClientSampled :
 SSTDICC0.5

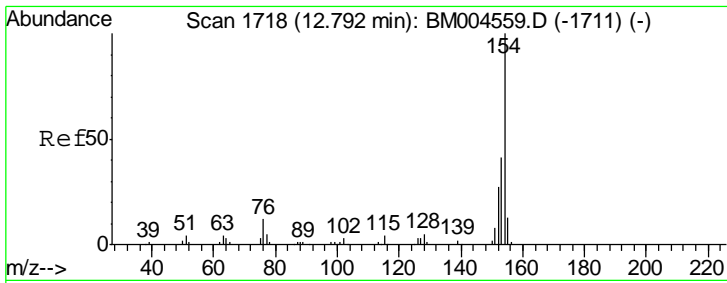
Tgt Ion	Resp	Lower	Upper
196	100		
198	95.2	77.8	116.6
200	29.0	24.3	36.5



#40
 2,4,5-Trichlorophenol
 Concen: 38.72 ng/ul
 RT: 12.57 min Scan# 1680
 Delta R.T. -0.01 min
 Lab File: BM004560.D
 Acq: 05 Mar 2016 02:35

Tgt Ion	Resp	Lower	Upper
196	100		
198	94.5	76.1	114.1
200	30.7	23.9	35.9

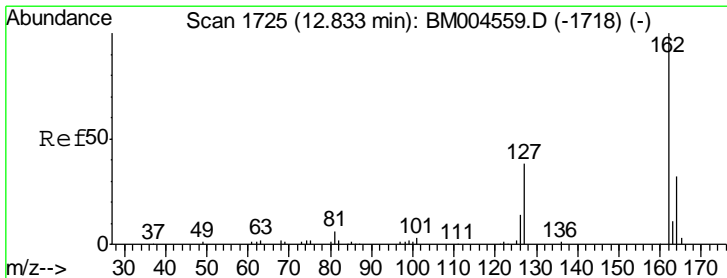
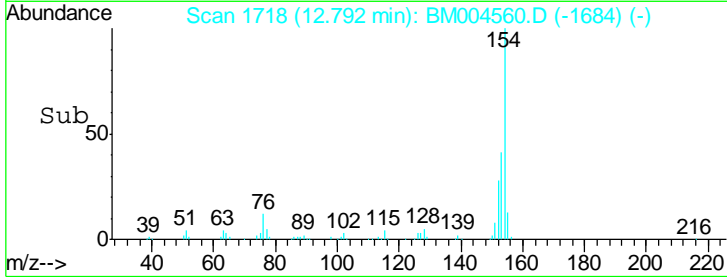
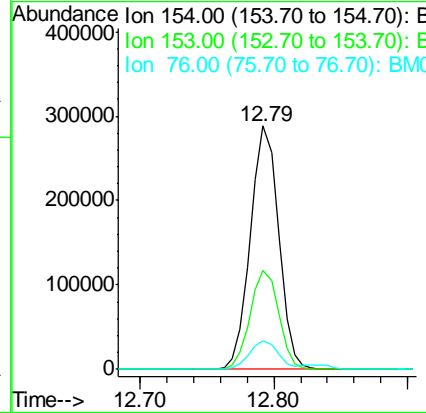
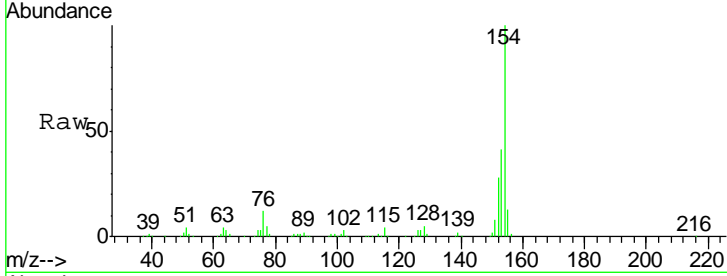




#41
 1,1'-Biphenyl
 Concen: 39.92 ng/ul
 RT: 12.79 min Scan# 1718
 Delta R.T. -0.00 min
 Lab File: BM004560.D
 Acq: 05 Mar 2016 02:35

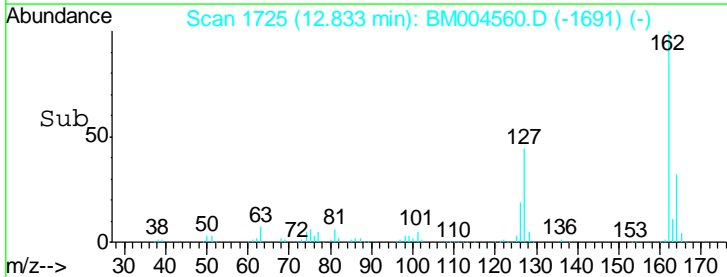
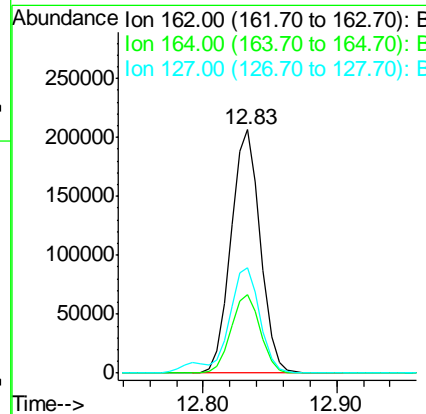
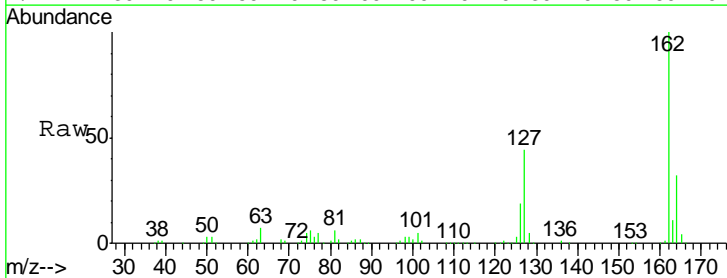
Instrument :
 BNA_M
 ClientSampled :
 SSTDICC0.5

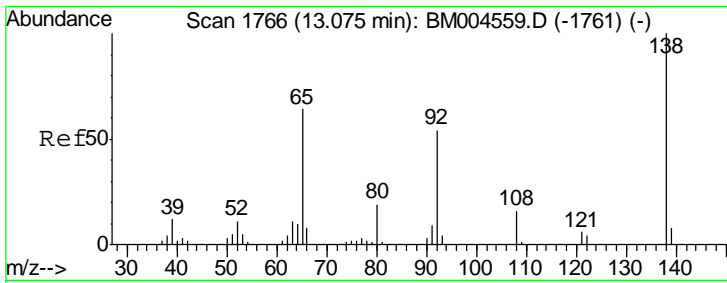
Tgt Ion	Resp	Lower	Upper
154	421085		
153	40.7	32.8	49.2
76	12.0	9.5	14.3



#42
 2-Chloronaphthalene
 Concen: 40.02 ng/ul
 RT: 12.83 min Scan# 1725
 Delta R.T. -0.00 min
 Lab File: BM004560.D
 Acq: 05 Mar 2016 02:35

Tgt Ion	Resp	Lower	Upper
162	317719		
164	32.4	25.9	38.9
127	43.5	33.4	50.2

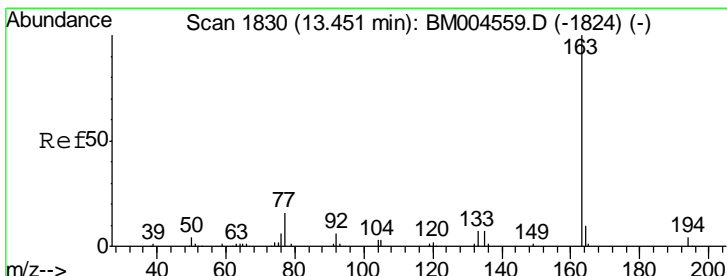
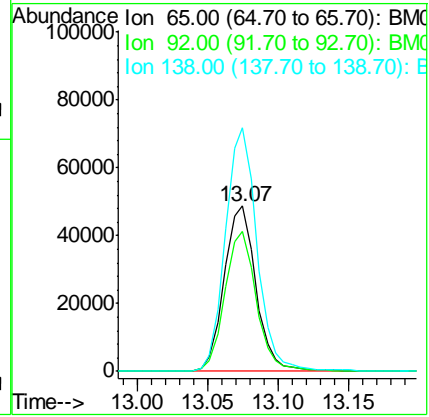
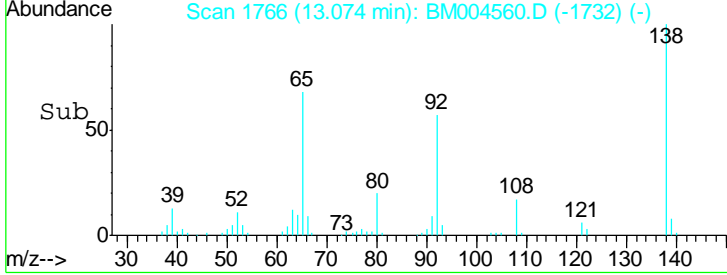
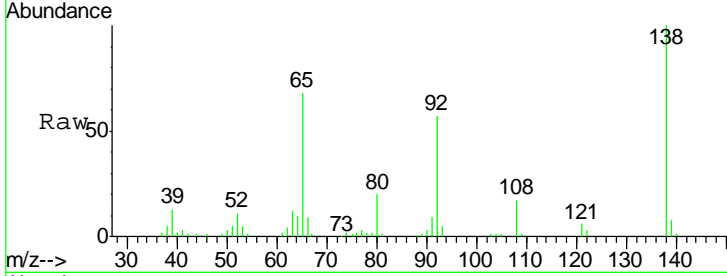




#43
 2-Nitroaniline
 Concen: 41.25 ng/ul
 RT: 13.07 min Scan# 1766
 Delta R.T. -0.00 min
 Lab File: BM004560.D
 Acq: 05 Mar 2016 02:35

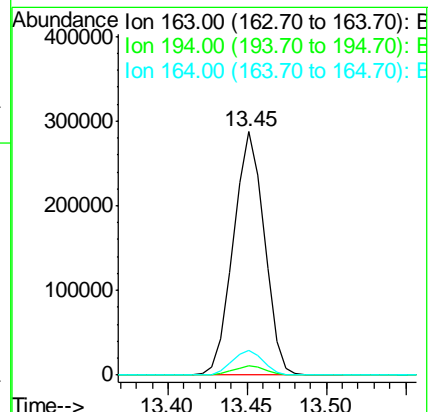
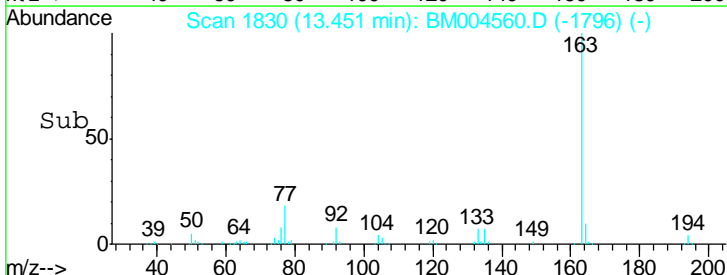
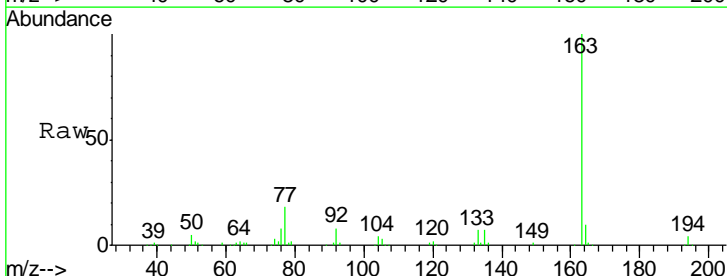
Instrument :
 BNA_M
 ClientSampled :
 SSTDICC0.5

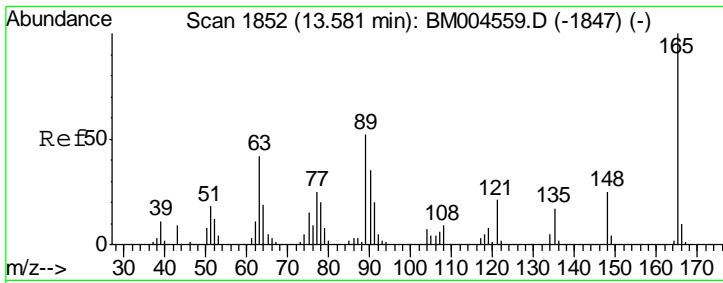
Tgt Ion	Resp	Lower	Upper
65	100		
92	84.6	67.1	100.7
138	147.5	124.6	186.8



#45
 Dimethylphthalate
 Concen: 39.03 ng/ul
 RT: 13.45 min Scan# 1830
 Delta R.T. -0.00 min
 Lab File: BM004560.D
 Acq: 05 Mar 2016 02:35

Tgt Ion	Resp	Lower	Upper
163	100		
194	3.9	3.0	4.6
164	10.0	8.1	12.1

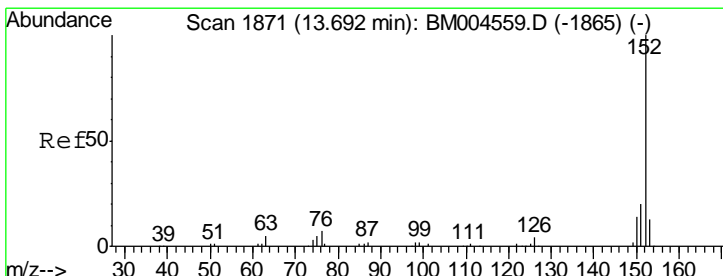
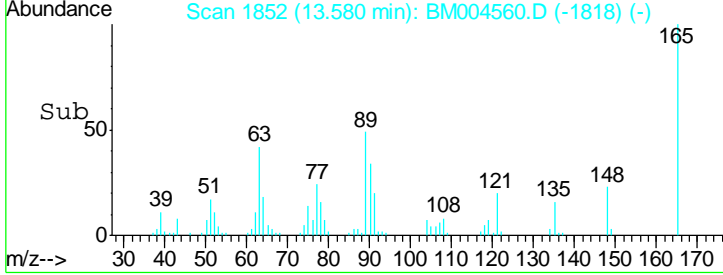
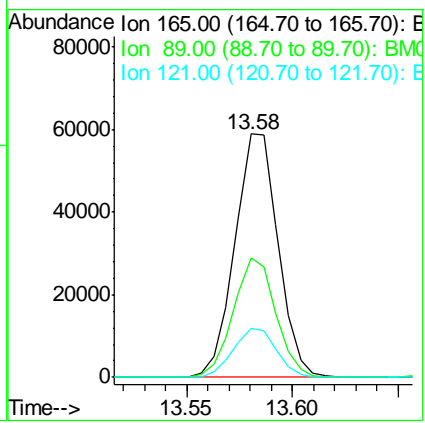
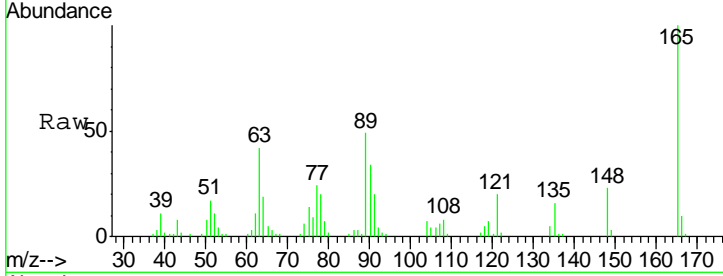




#46
 2,6-Dinitrotoluene
 Concen: 40.97 ng/ul
 RT: 13.58 min Scan# 1852
 Delta R.T. -0.00 min
 Lab File: BM004560.D
 Acq: 05 Mar 2016 02:35

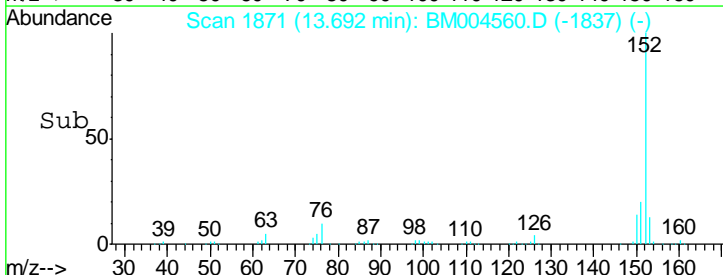
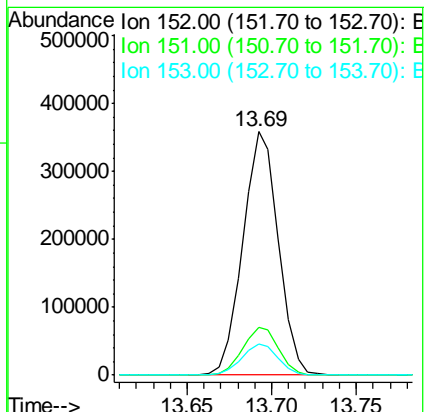
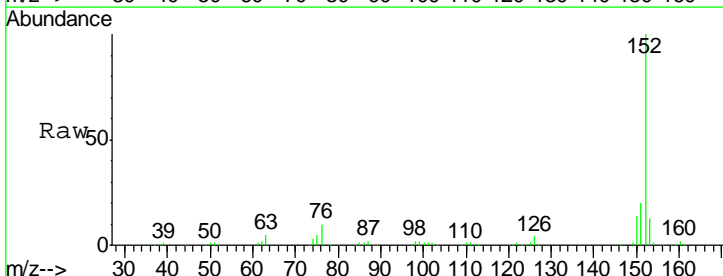
Instrument :
 BNA_M
 ClientSampled :
 SSTDICC0.5

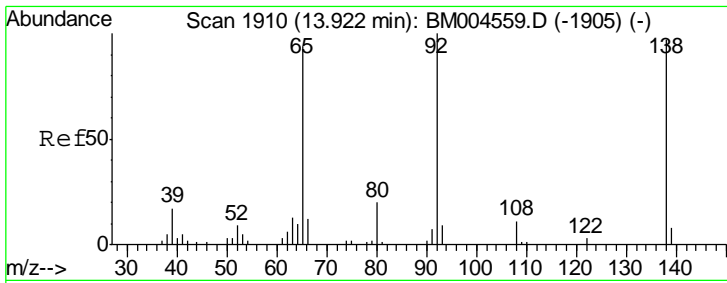
Tgt Ion	Resp	Lower	Upper
165	83721		
89	49.3	41.4	62.2
121	20.3	16.9	25.3



#48
 Acenaphthylene
 Concen: 39.50 ng/ul
 RT: 13.69 min Scan# 1871
 Delta R.T. -0.00 min
 Lab File: BM004560.D
 Acq: 05 Mar 2016 02:35

Tgt Ion	Resp	Lower	Upper
152	524348		
151	19.8	16.1	24.1
153	12.9	10.2	15.2

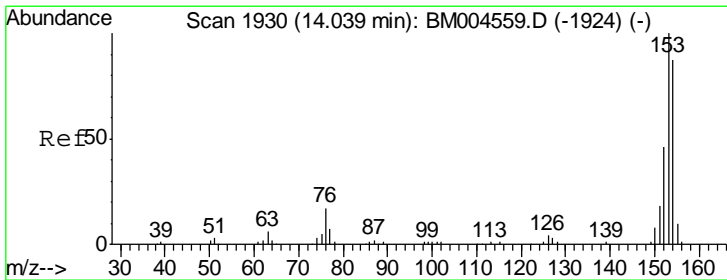
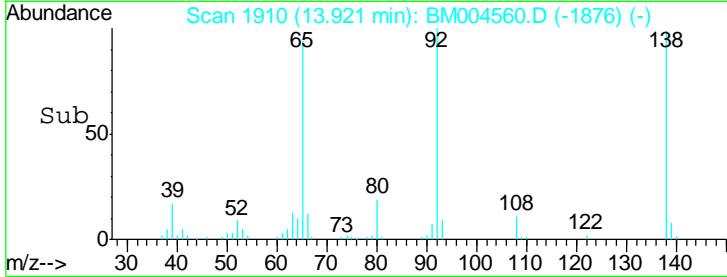
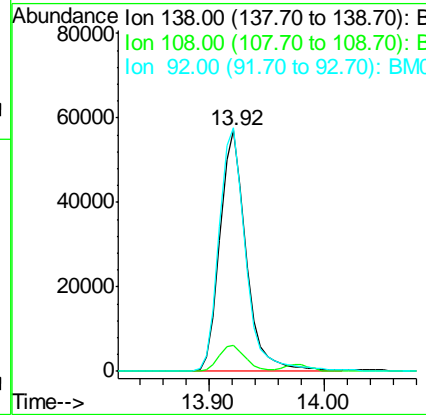
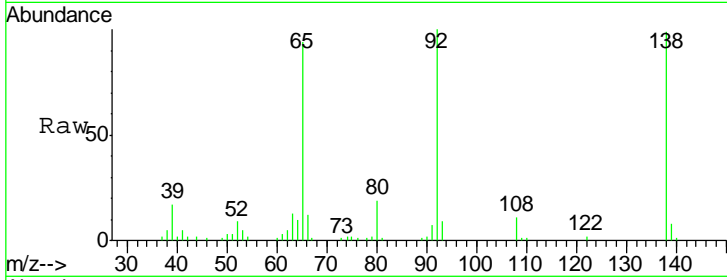




#49
 3-Nitroaniline
 Concen: 44.67 ng/ul
 RT: 13.92 min Scan# 1910
 Delta R.T. -0.00 min
 Lab File: BM004560.D
 Acq: 05 Mar 2016 02:35

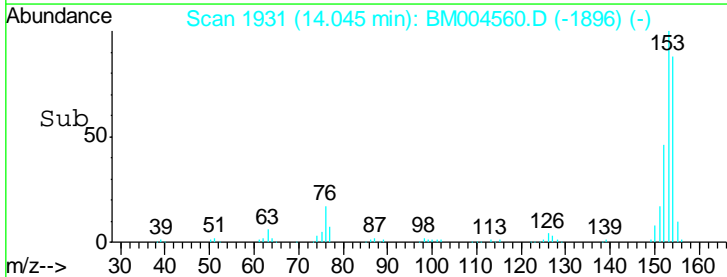
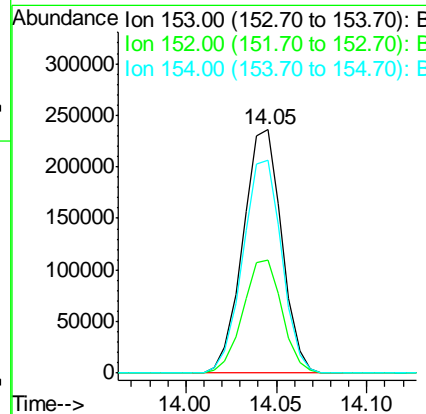
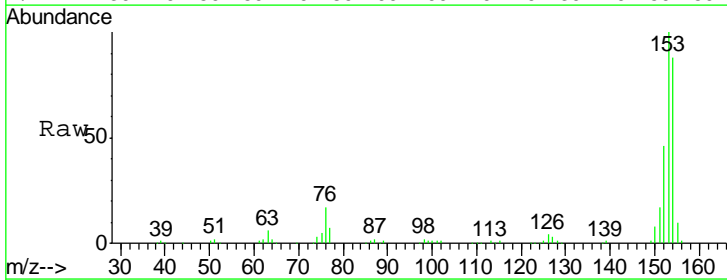
Instrument :
 BNA_M
 ClientSampled :
 SSTDICC0.5

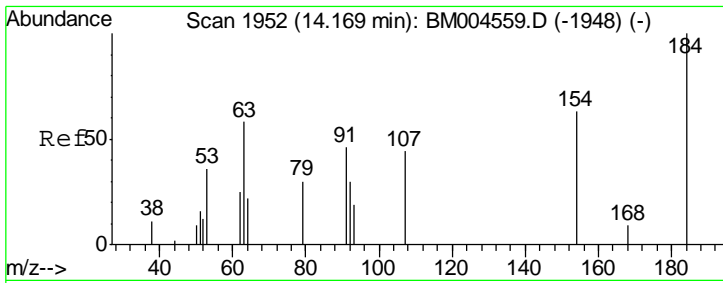
Tgt Ion	Resp	Lower	Upper
138	89821		
108	11.0	8.7	13.1
92	101.1	82.7	124.1



#50
 Acenaphthene
 Concen: 39.10 ng/ul
 RT: 14.05 min Scan# 1931
 Delta R.T. 0.01 min
 Lab File: BM004560.D
 Acq: 05 Mar 2016 02:35

Tgt Ion	Resp	Lower	Upper
153	350458		
152	46.2	36.8	55.2
154	87.5	69.7	104.5

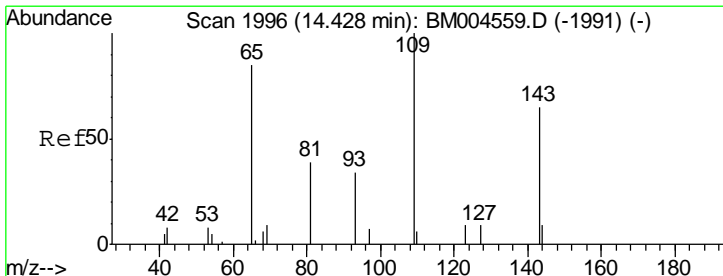
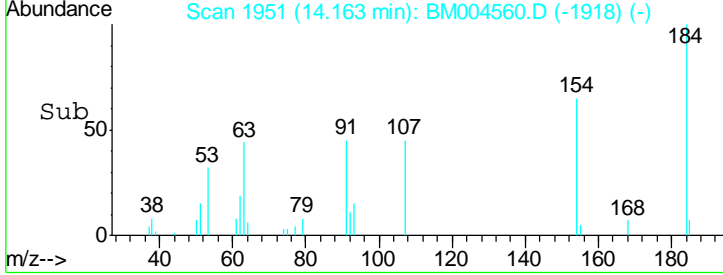
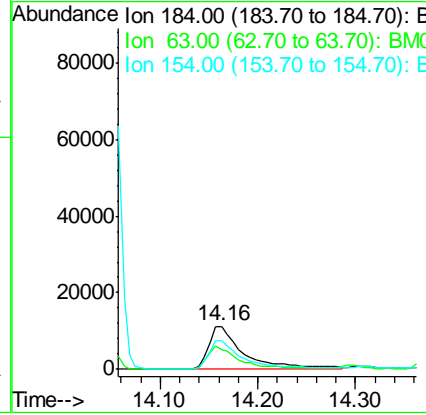
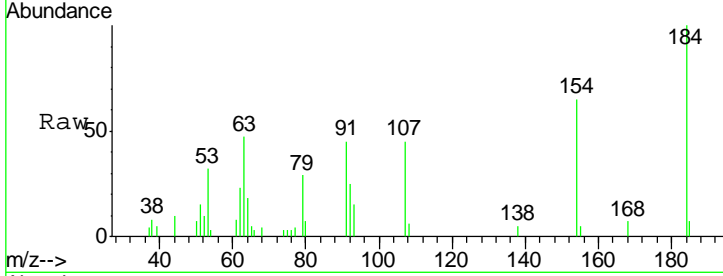




#51
 2,4-Dinitrophenol
 Concen: 48.39 ng/ul
 RT: 14.16 min Scan# 1951
 Delta R.T. -0.01 min
 Lab File: BM004560.D
 Acq: 05 Mar 2016 02:35

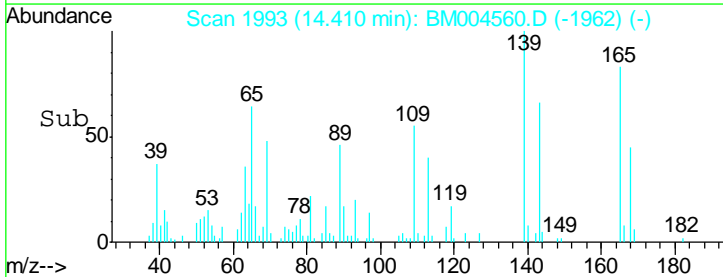
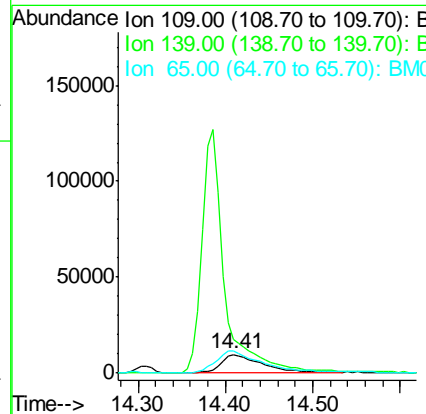
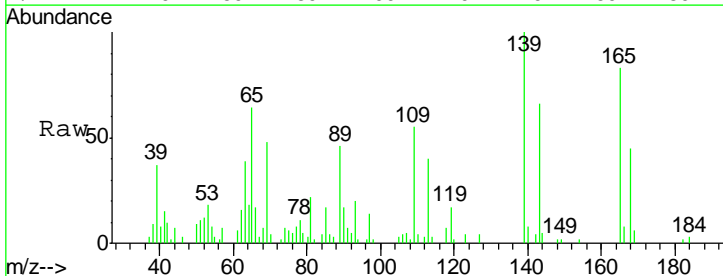
Instrument :
 BNA_M
 ClientSampled :
 SSTDICC0.5

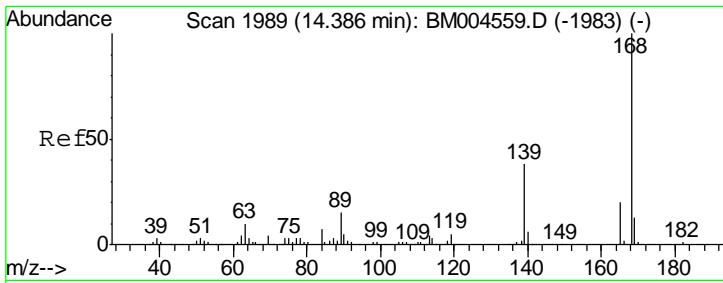
Tgt Ion	Resp	Lower	Upper
184	28174		
184	100		
63	46.6	46.2	69.4
154	64.9	50.5	75.7



#53
 4-Nitrophenol
 Concen: 40.53 ng/ul
 RT: 14.41 min Scan# 1993
 Delta R.T. -0.02 min
 Lab File: BM004560.D
 Acq: 05 Mar 2016 02:35

Tgt Ion	Resp	Lower	Upper
109	32850		
109	100		
139	183.2	126.2	189.4
65	117.4	90.1	135.1

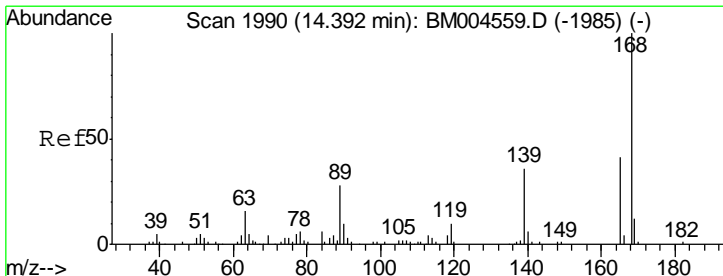
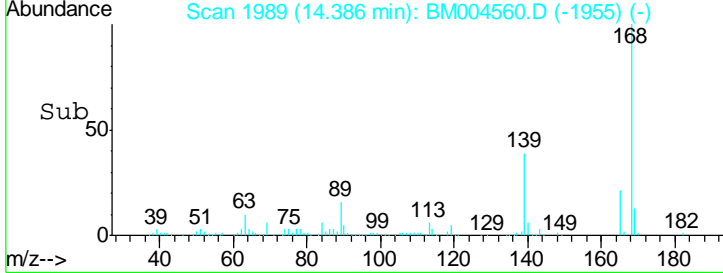
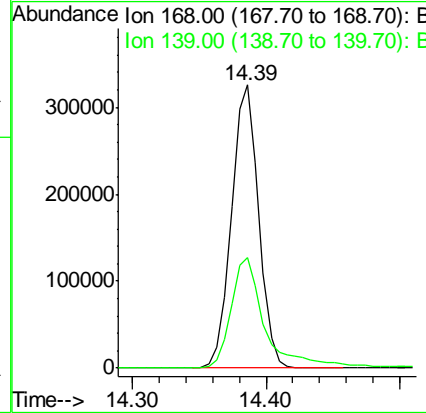
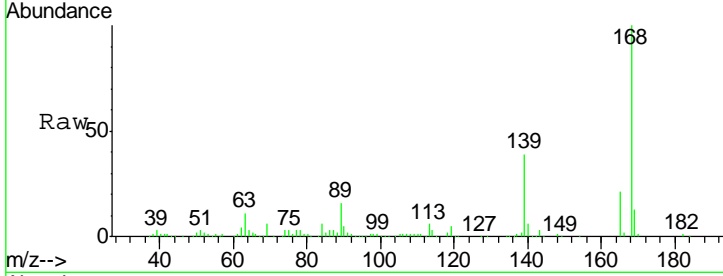




#54
 Dibenzofuran
 Concen: 39.18 ng/ul
 RT: 14.39 min Scan# 1989
 Delta R.T. -0.00 min
 Lab File: BM004560.D
 Acq: 05 Mar 2016 02:35

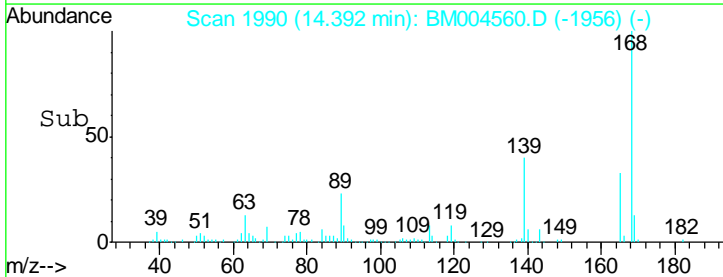
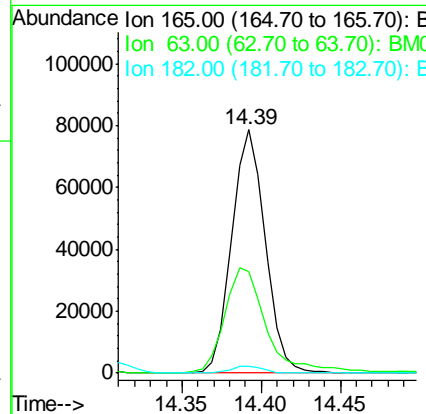
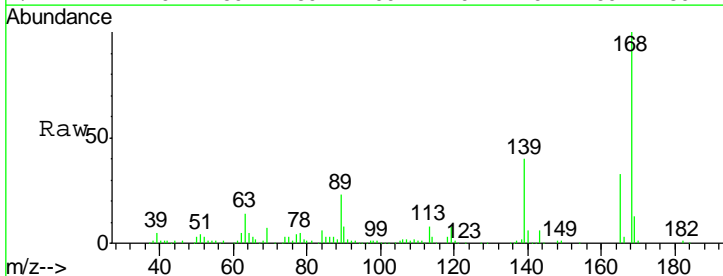
Instrument :
 BNA_M
 ClientSampled :
 SSTDICC0.5

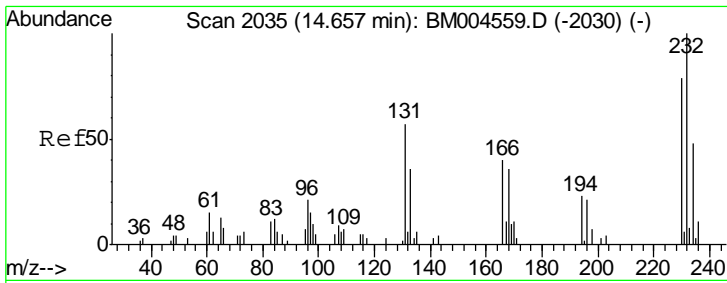
Tgt Ion:168 Resp: 463003
 Ion Ratio Lower Upper
 168 100
 139 39.0 30.5 45.7



#55
 2,4-Dinitrotoluene
 Concen: 40.39 ng/ul
 RT: 14.39 min Scan# 1990
 Delta R.T. -0.00 min
 Lab File: BM004560.D
 Acq: 05 Mar 2016 02:35

Tgt Ion:165 Resp: 115322
 Ion Ratio Lower Upper
 165 100
 63 41.8 32.6 48.8
 182 3.0 2.3 3.5

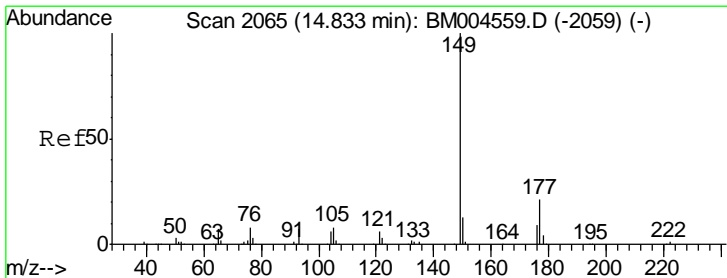
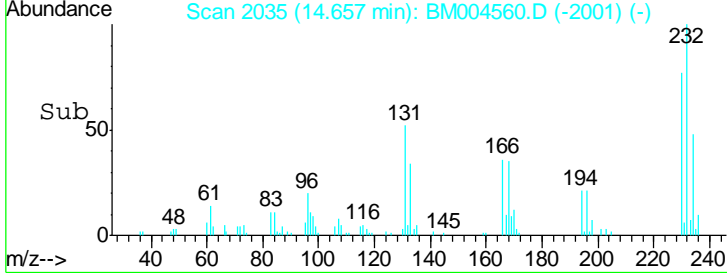
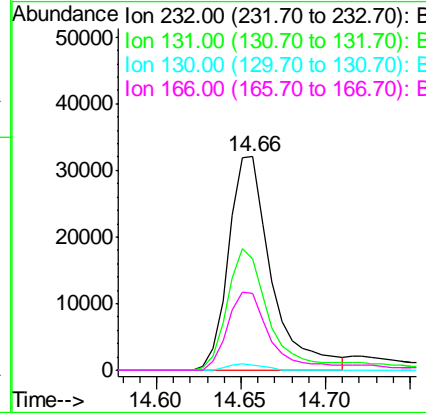
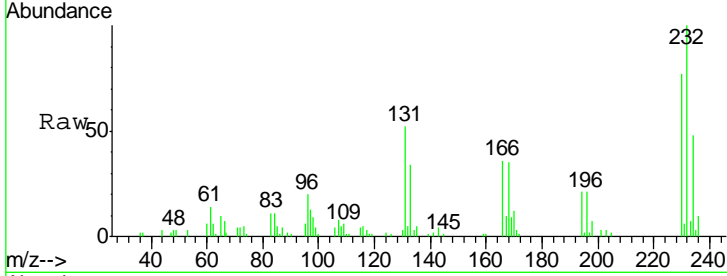




#56
 2,3,4,6-Tetrachlorophenol
 Concen: 39.17 ng/ul
 RT: 14.66 min Scan# 2035
 Delta R.T. -0.00 min
 Lab File: BM004560.D
 Acq: 05 Mar 2016 02:35

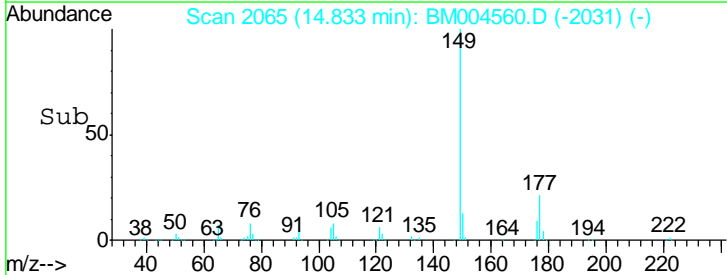
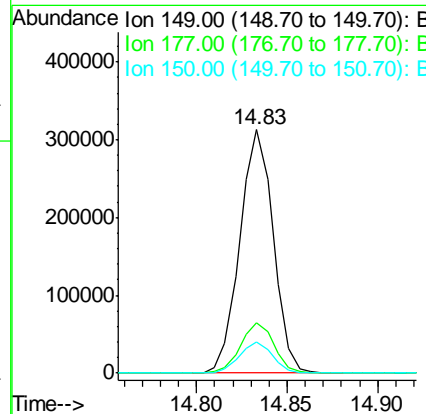
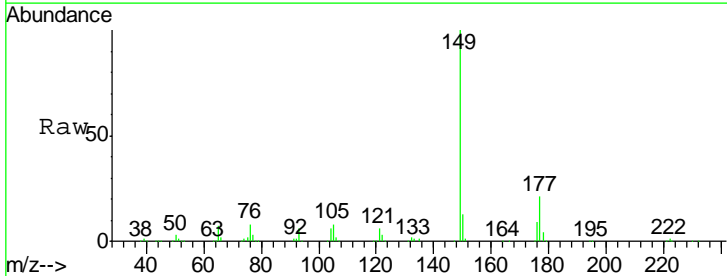
Instrument :
 BNA_M
 ClientSampled :
 SSTDICC0.5

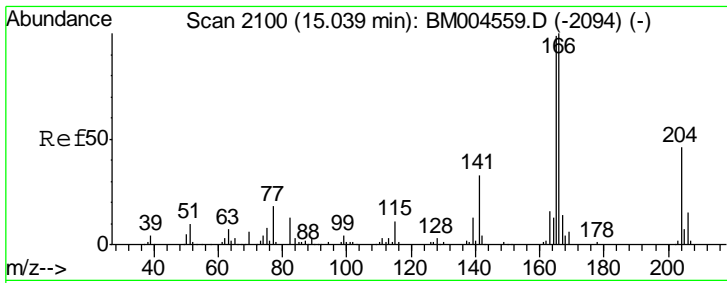
Tgt Ion	Resp	Lower	Upper
232	100		
131	51.9	45.8	68.6
130	2.6	2.0	3.0
166	36.0	31.8	47.6



#57
 Diethylphthalate
 Concen: 38.71 ng/ul
 RT: 14.83 min Scan# 2065
 Delta R.T. -0.00 min
 Lab File: BM004560.D
 Acq: 05 Mar 2016 02:35

Tgt Ion	Resp	Lower	Upper
149	100		
177	20.8	16.6	25.0
150	12.6	10.1	15.1

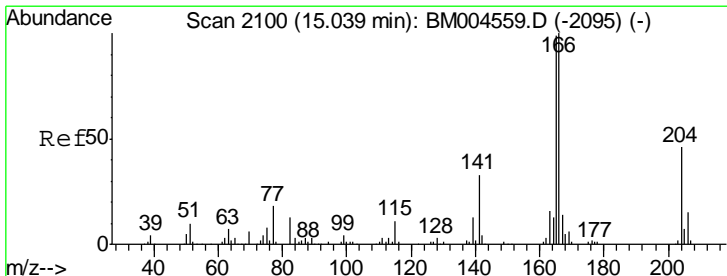
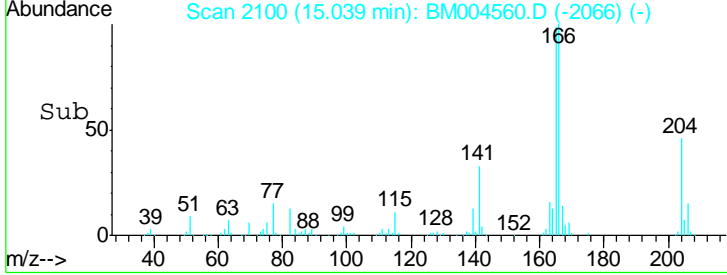
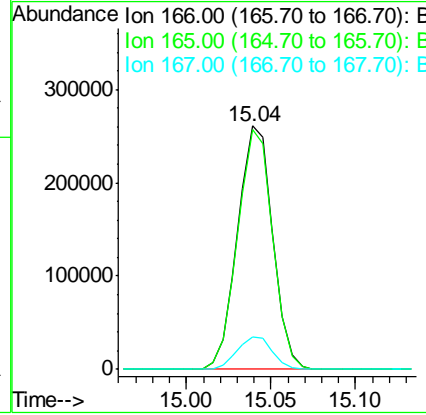
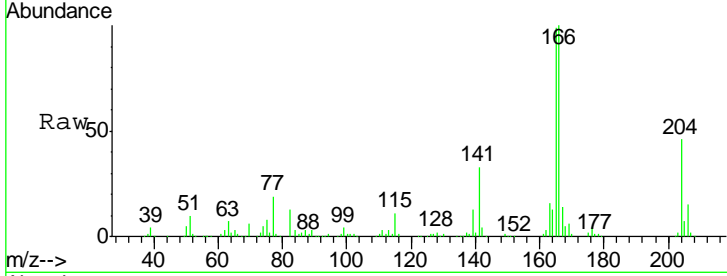




#59
 Fluorene
 Concen: 38.76 ng/ul
 RT: 15.04 min Scan# 2100
 Delta R.T. -0.00 min
 Lab File: BM004560.D
 Acq: 05 Mar 2016 02:35

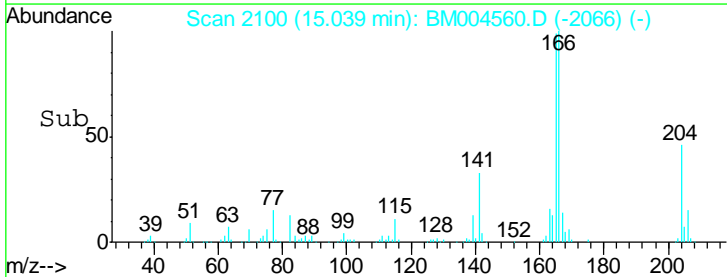
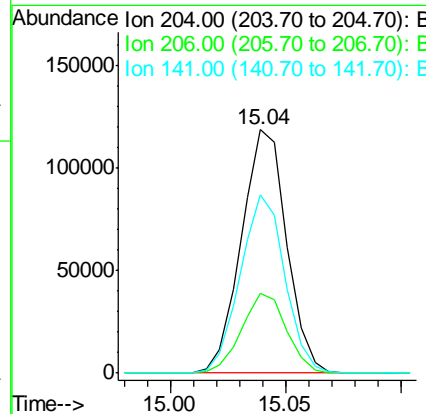
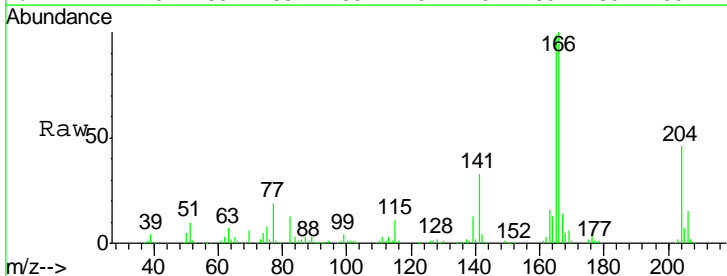
Instrument :
 BNA_M
 ClientSampled :
 SSTDICC0.5

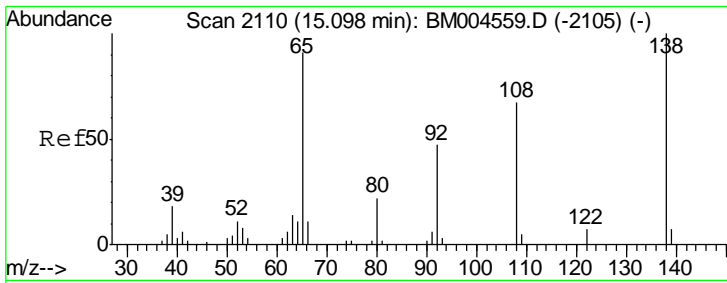
Tgt Ion	Resp	Lower	Upper
166	377386		
165	98.7	79.1	118.7
167	13.5	10.9	16.3



#60
 4-Chlorophenyl-phenylether
 Concen: 38.71 ng/ul
 RT: 15.04 min Scan# 2100
 Delta R.T. -0.00 min
 Lab File: BM004560.D
 Acq: 05 Mar 2016 02:35

Tgt Ion	Resp	Lower	Upper
204	162931		
206	32.9	26.6	39.8
141	73.3	58.5	87.7

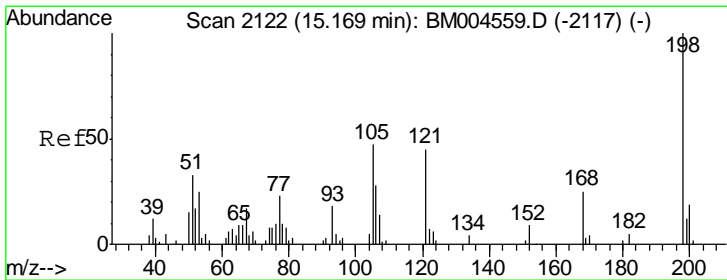
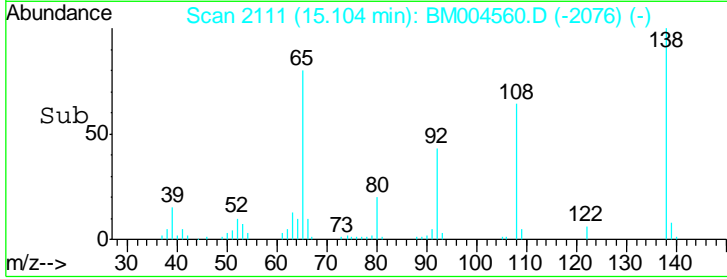
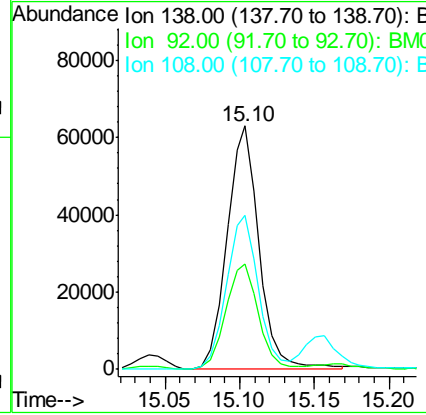
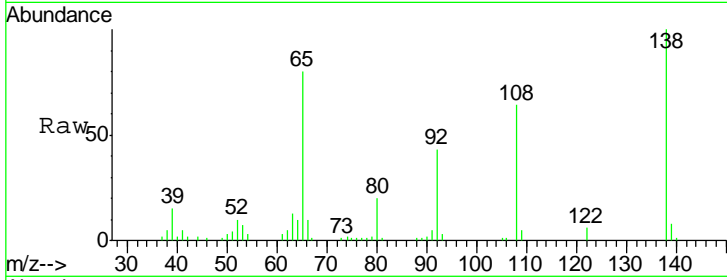




#61
 4-Nitroaniline
 Concen: 43.52 ng/ul
 RT: 15.10 min Scan# 2111
 Delta R.T. 0.01 min
 Lab File: BM004560.D
 Acq: 05 Mar 2016 02:35

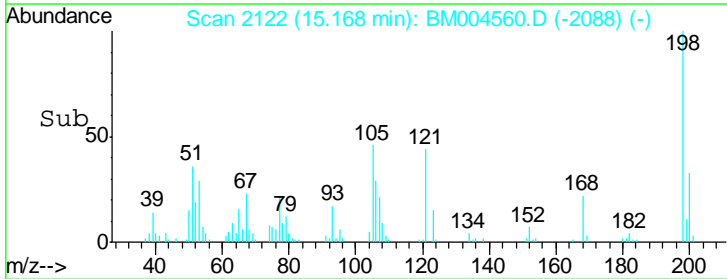
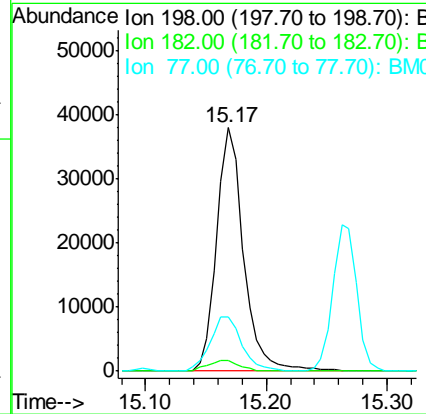
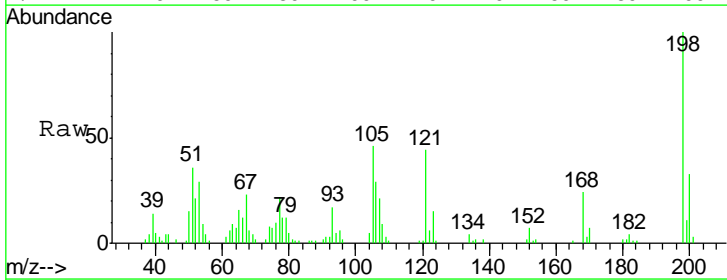
Instrument :
 BNA_M
 ClientSampled :
 SSTDICC0.5

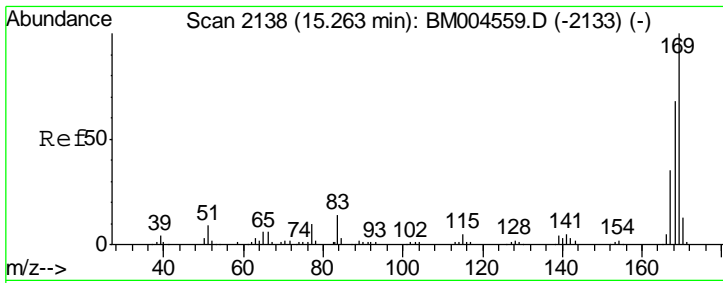
Tgt Ion	Resp	Lower	Upper
138	94722		
92	43.0	37.3	55.9
108	63.5	53.7	80.5



#64
 4,6-Dinitro-2-methylphenol
 Concen: 45.42 ng/ul
 RT: 15.17 min Scan# 2122
 Delta R.T. -0.00 min
 Lab File: BM004560.D
 Acq: 05 Mar 2016 02:35

Tgt Ion	Resp	Lower	Upper
198	58503		
182	4.1	4.0	6.0
77	22.4	20.1	30.1



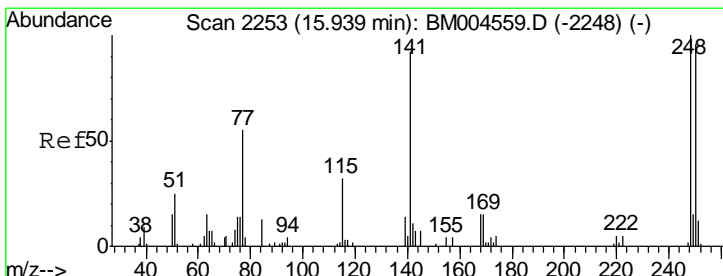
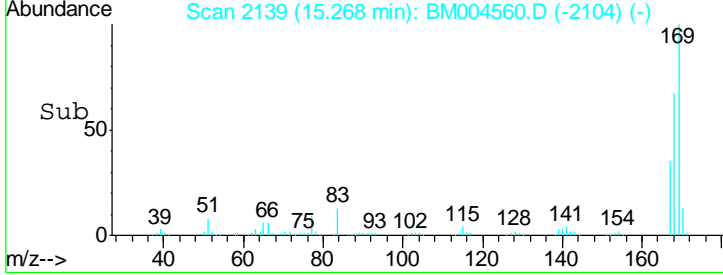
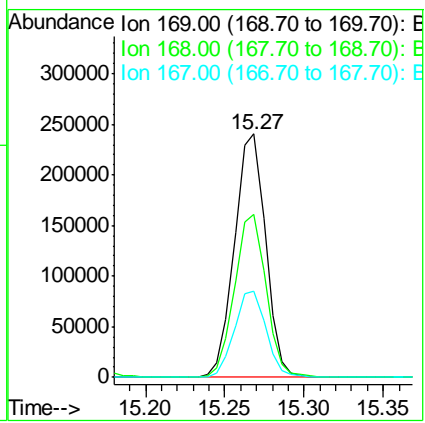
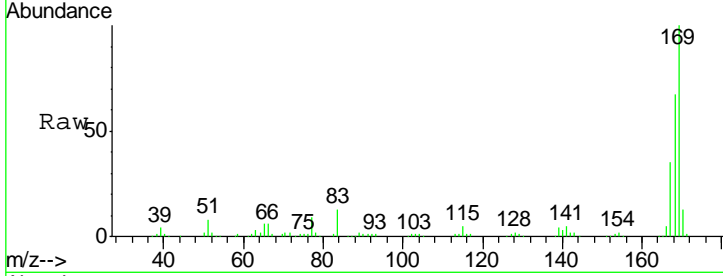


#65
 N-Nitrosodiphenylamine
 Concen: 40.28 ng/ul
 RT: 15.27 min Scan# 2139
 Delta R.T. 0.01 min
 Lab File: BM004560.D
 Acq: 05 Mar 2016 02:35

Instrument :
 BNA_M
ClientSampled :
 SSTDICC0.5

Tgt Ion: 169 Resp: 327402

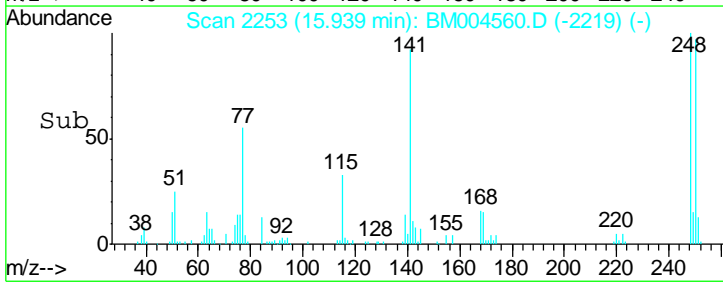
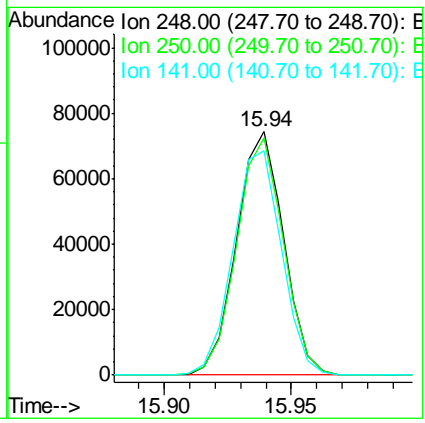
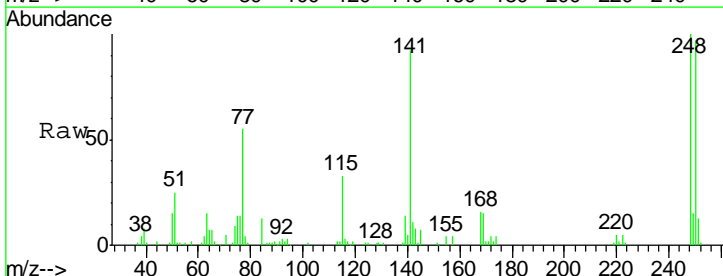
Ion	Ratio	Lower	Upper
169	100		
168	66.7	54.1	81.1
167	35.3	27.9	41.9

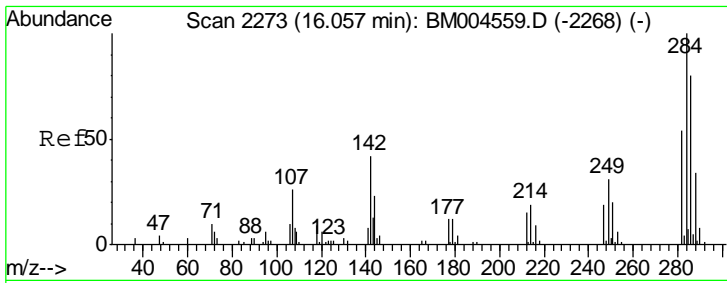


#66
 4-Bromophenyl-phenylether
 Concen: 40.11 ng/ul
 RT: 15.94 min Scan# 2253
 Delta R.T. -0.00 min
 Lab File: BM004560.D
 Acq: 05 Mar 2016 02:35

Tgt Ion: 248 Resp: 96004

Ion	Ratio	Lower	Upper
248	100		
250	97.3	76.8	115.2
141	92.4	73.8	110.8

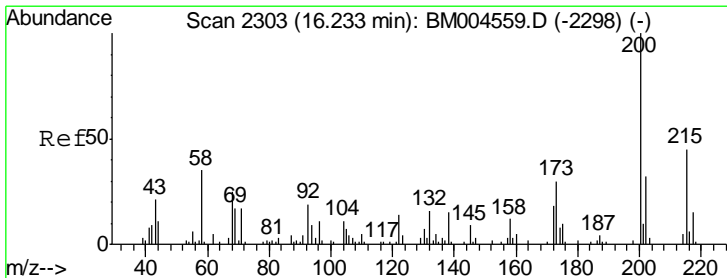
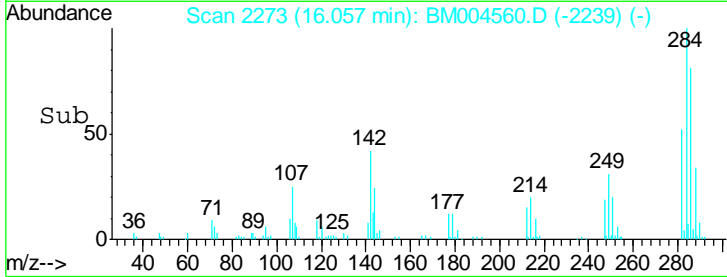
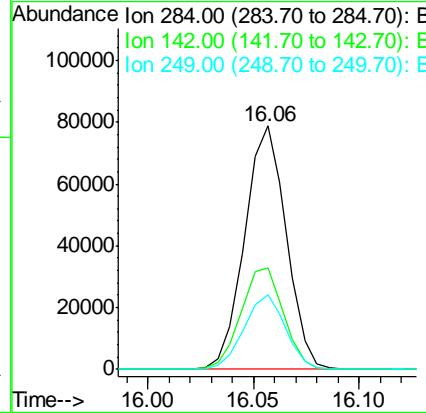
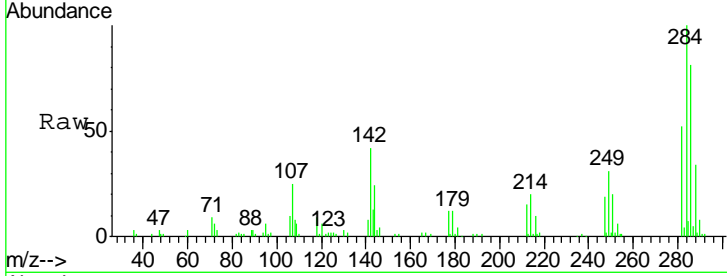




#67
 Hexachlorobenzene
 Concen: 39.59 ng/ul
 RT: 16.06 min Scan# 2273
 Delta R.T. -0.00 min
 Lab File: BM004560.D
 Acq: 05 Mar 2016 02:35

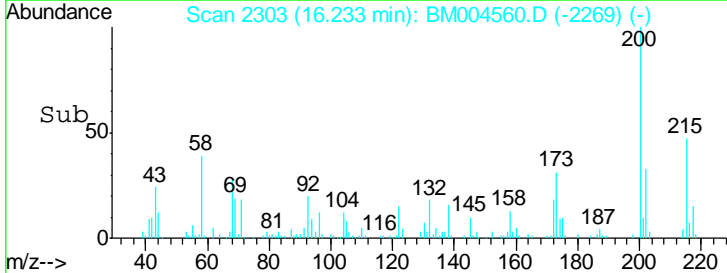
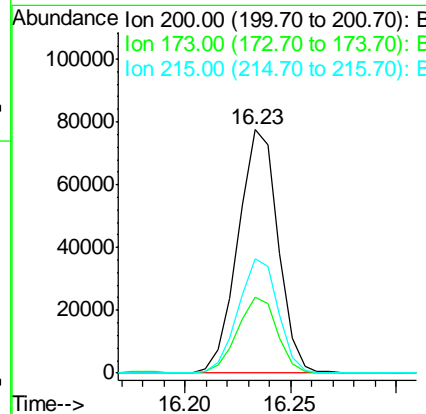
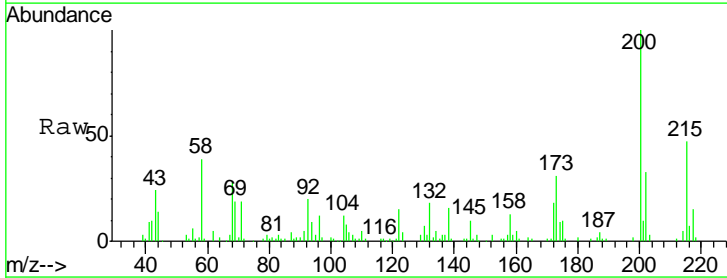
Instrument :
 BNA_M
 ClientSampleID :
 SSTDICC0.5

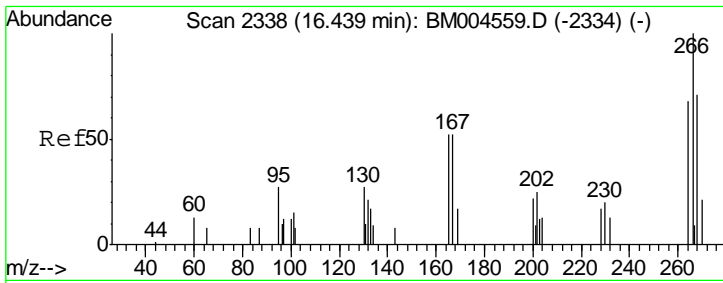
Tgt Ion	Resp	Lower	Upper
284	107469		
142	41.8	33.9	50.9
249	30.5	24.8	37.2



#68
 Atrazine
 Concen: 40.41 ng/ul
 RT: 16.23 min Scan# 2303
 Delta R.T. -0.00 min
 Lab File: BM004560.D
 Acq: 05 Mar 2016 02:35

Tgt Ion	Resp	Lower	Upper
200	101962		
173	31.1	24.1	36.1
215	46.9	36.2	54.2

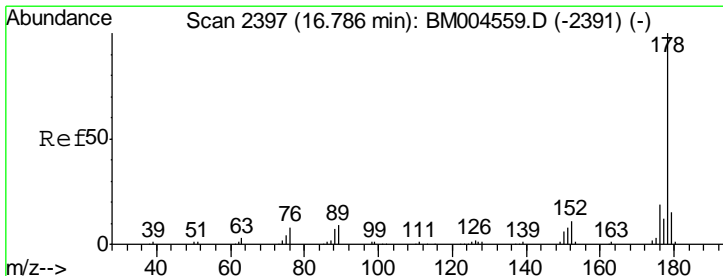
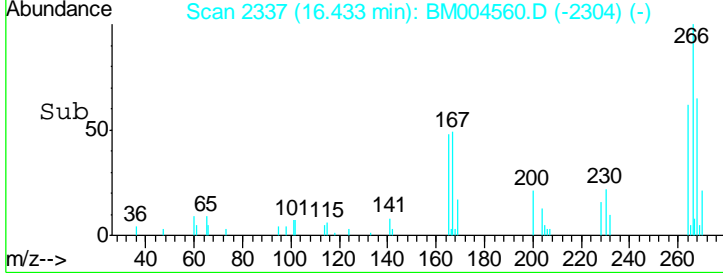
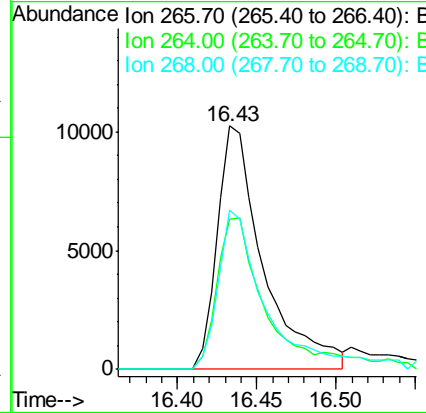
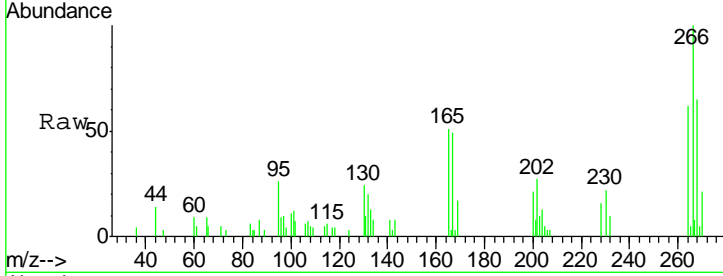




#69
 Pentachlorophenol
 Concen: 32.77 ng/ul
 RT: 16.43 min Scan# 2337
 Delta R.T. -0.01 min
 Lab File: BM004560.D
 Acq: 05 Mar 2016 02:35

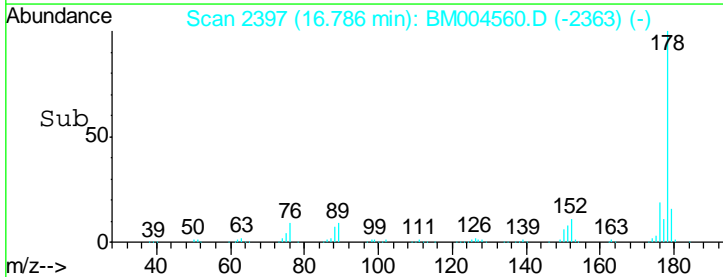
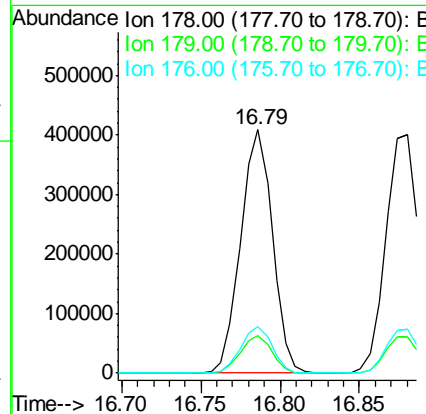
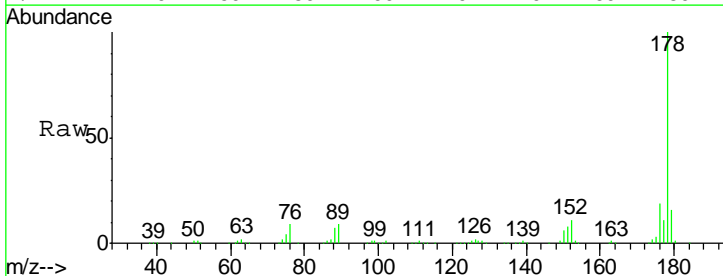
Instrument :
 BNA_M
 ClientSampled :
 SSTDICC0.5

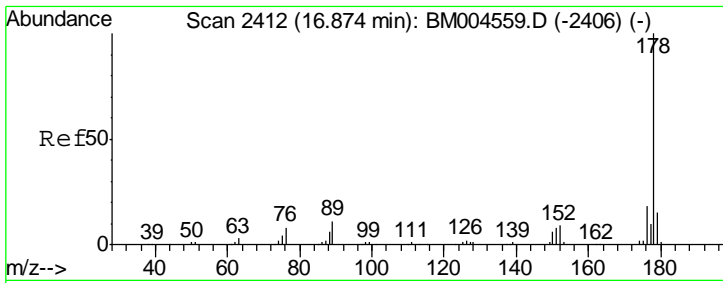
Tgt Ion	Resp	Lower	Upper
266	100		
264	61.6	54.1	81.1
268	65.4	57.0	85.6



#70
 Phenanthrene
 Concen: 39.40 ng/ul
 RT: 16.79 min Scan# 2397
 Delta R.T. -0.00 min
 Lab File: BM004560.D
 Acq: 05 Mar 2016 02:35

Tgt Ion	Resp	Lower	Upper
178	100		
179	15.5	12.2	18.4
176	19.1	15.0	22.6



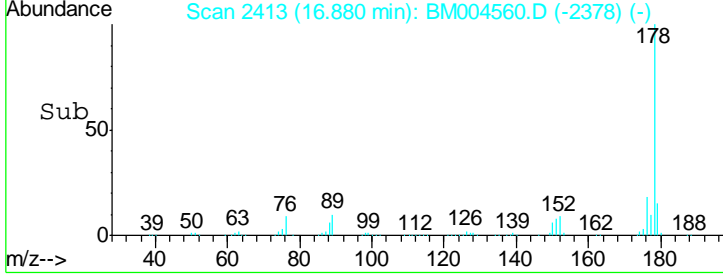
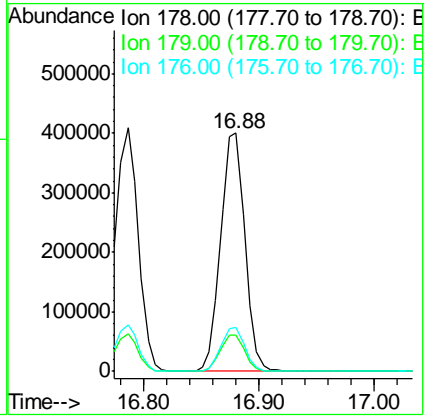
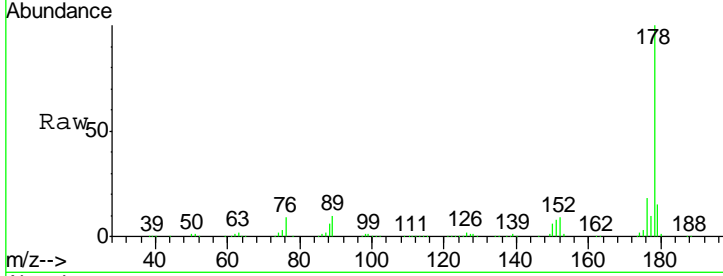


#72
 Anthracene
 Concen: 39.51 ng/ul
 RT: 16.88 min Scan# 2413
 Delta R.T. 0.01 min
 Lab File: BM004560.D
 Acq: 05 Mar 2016 02:35

Instrument :
 BNA_M
 ClientSampled :
 SSTDICC0.5

Tgt Ion:178 Resp: 582223

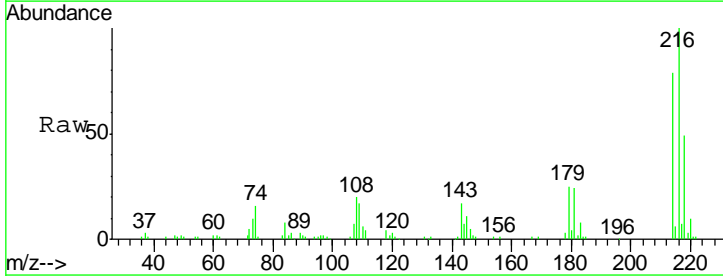
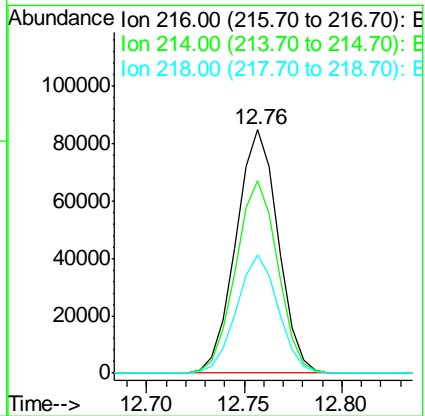
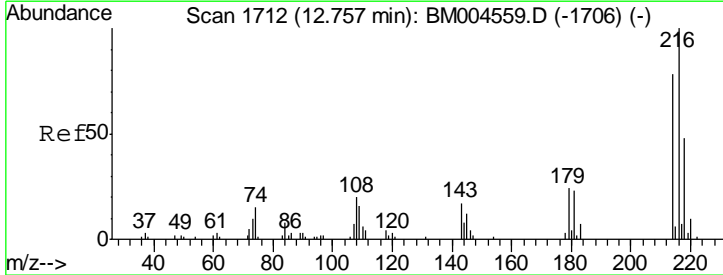
Ion	Ratio	Lower	Upper
178	100		
179	15.0	12.1	18.1
176	18.3	14.2	21.4

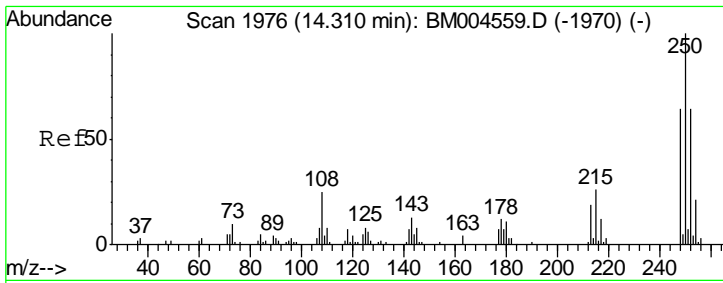


#73
 1,2,3,4-Tetrachlorobenzene
 Concen: 41.12 ng/uL
 RT: 12.76 min Scan# 1712
 Delta R.T. -0.00 min
 Lab File: BM004560.D
 Acq: 05 Mar 2016 02:35

Tgt Ion:216 Resp: 127168

Ion	Ratio	Lower	Upper
216	100		
214	79.1	62.6	94.0
218	48.6	38.4	57.6

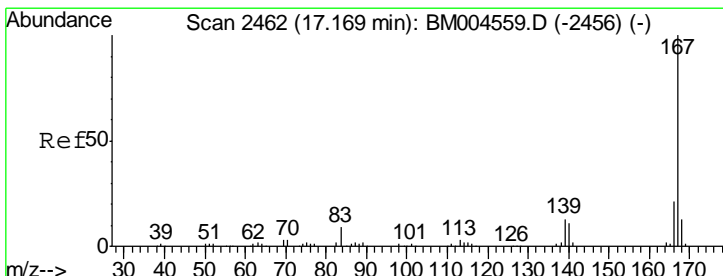
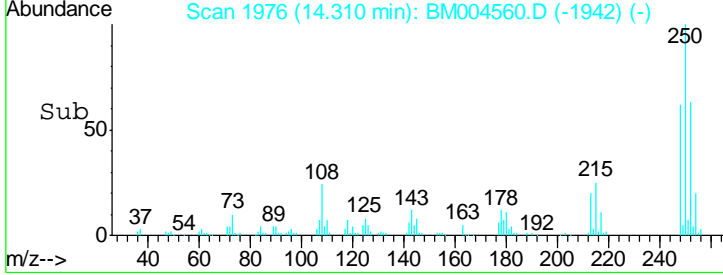
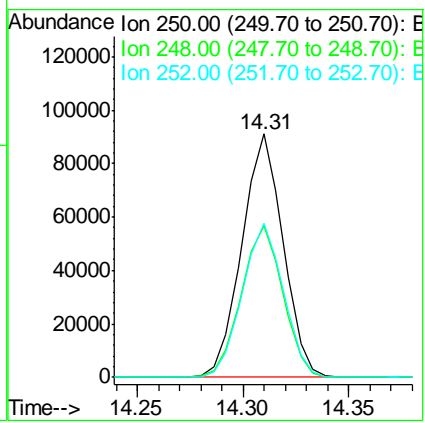
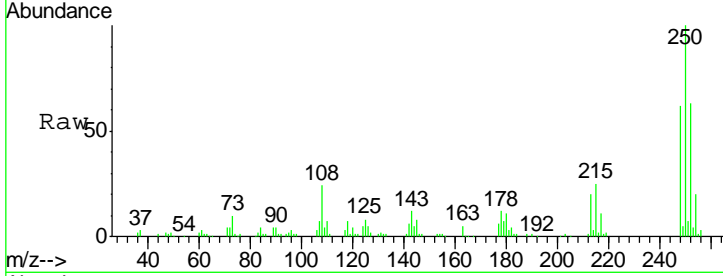




#74
 Pentachlorobenzene
 Concen: 40.76 ng/uL
 RT: 14.31 min Scan# 1976
 Delta R.T. -0.00 min
 Lab File: BM004560.D
 Acq: 05 Mar 2016 02:35

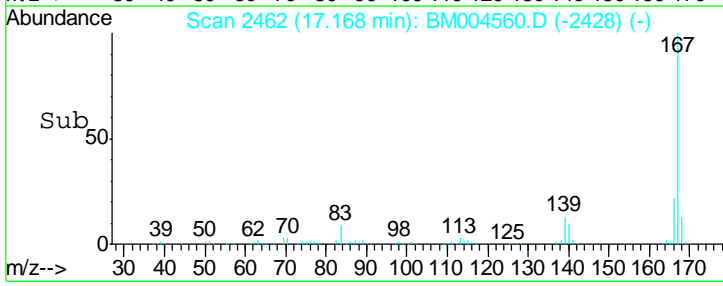
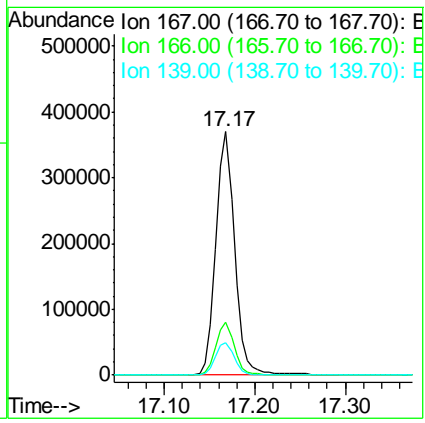
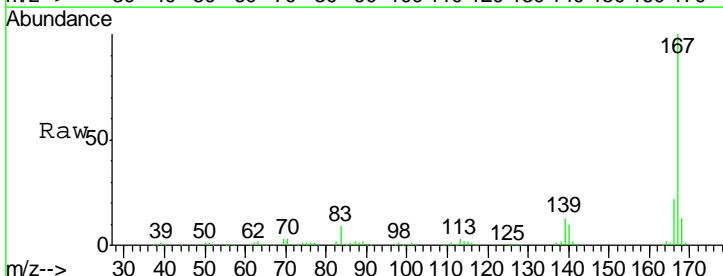
Instrument :
 BNA_M
 ClientSampleId :
 SSTDICC0.5

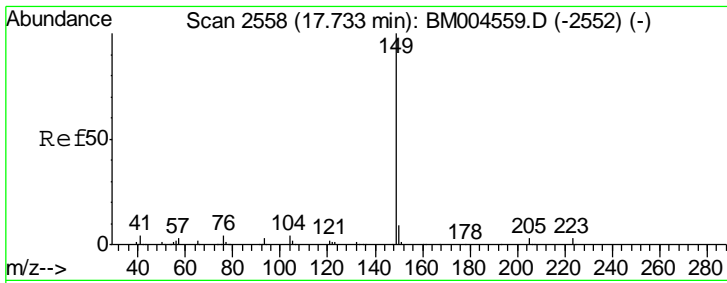
Tgt Ion	Resp	Lower	Upper
250	100		
248	62.2	51.1	76.7
252	63.2	50.9	76.3



#75
 Carbazole
 Concen: 40.47 ng/uL
 RT: 17.17 min Scan# 2462
 Delta R.T. -0.00 min
 Lab File: BM004560.D
 Acq: 05 Mar 2016 02:35

Tgt Ion	Resp	Lower	Upper
167	100		
166	21.5	17.2	25.8
139	13.4	10.7	16.1

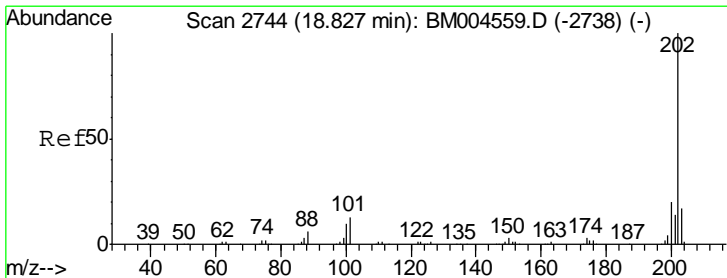
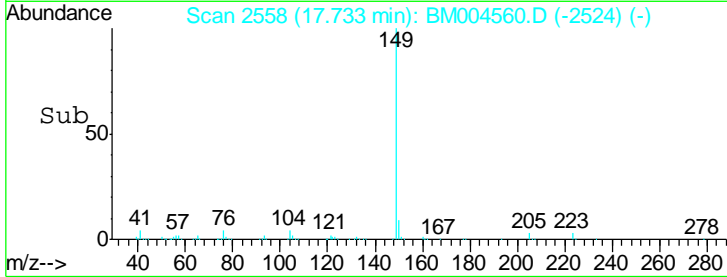
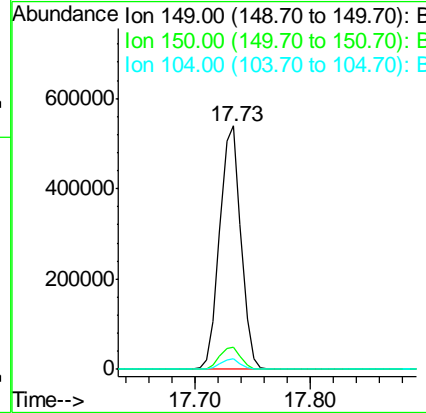
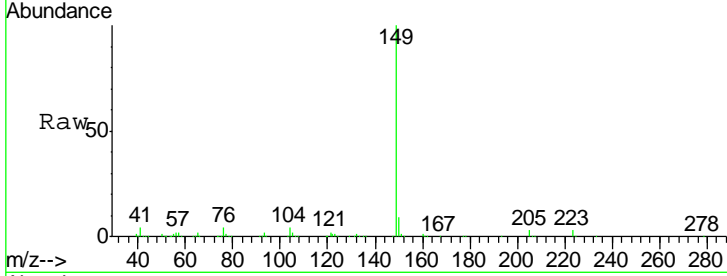




#76
 Di-n-butylphthalate
 Concen: 38.53 ng/ul
 RT: 17.73 min Scan# 2558
 Delta R.T. -0.00 min
 Lab File: BM004560.D
 Acq: 05 Mar 2016 02:35

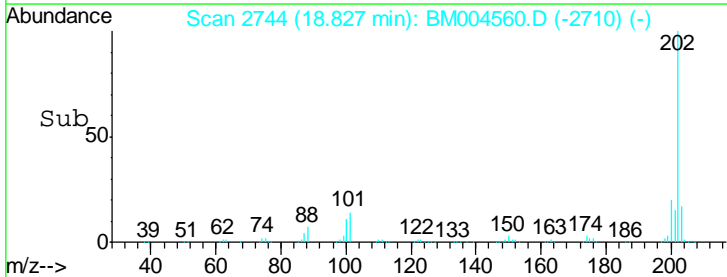
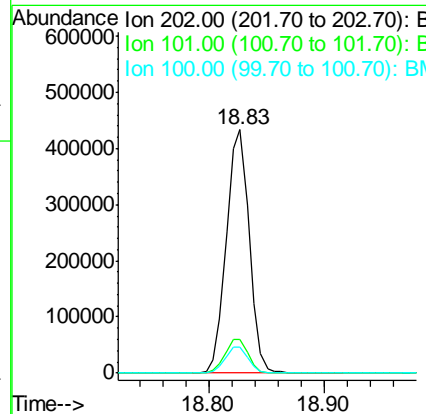
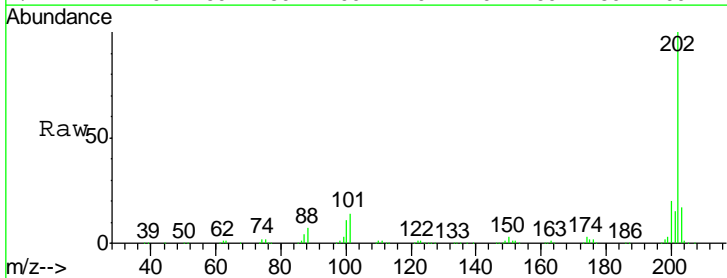
Instrument :
 BNA_M
 ClientSampled :
 SSTDICC0.5

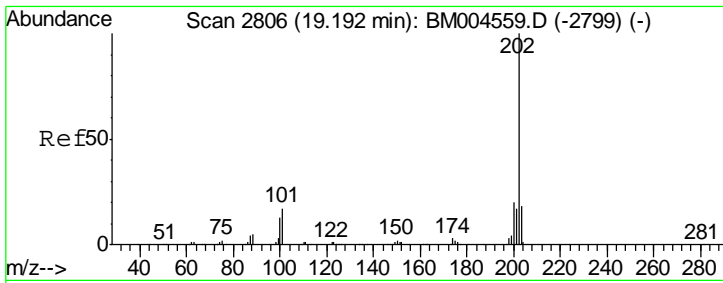
Tgt Ion	Resp	Lower	Upper
149	100		
150	9.0	7.1	10.7
104	4.1	3.3	4.9



#77
 Fluoranthene
 Concen: 40.76 ng/ul
 RT: 18.83 min Scan# 2744
 Delta R.T. -0.00 min
 Lab File: BM004560.D
 Acq: 05 Mar 2016 02:35

Tgt Ion	Resp	Lower	Upper
202	100		
101	13.6	10.4	15.6
100	10.5	8.3	12.5

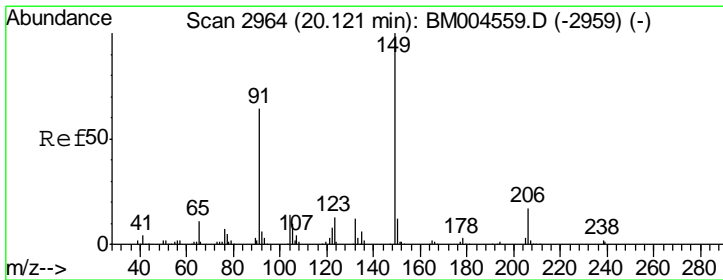
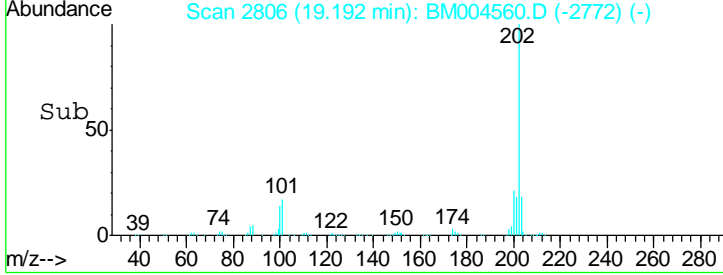
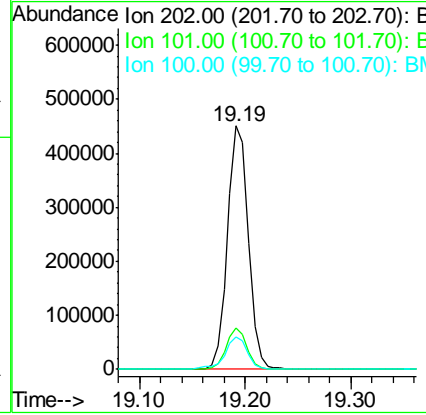
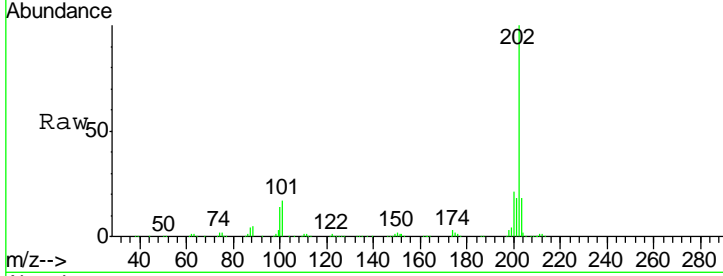




#80
 Pyrene
 Concen: 40.74 ng/ul
 RT: 19.19 min Scan# 2806
 Delta R.T. -0.00 min
 Lab File: BM004560.D
 Acq: 05 Mar 2016 02:35

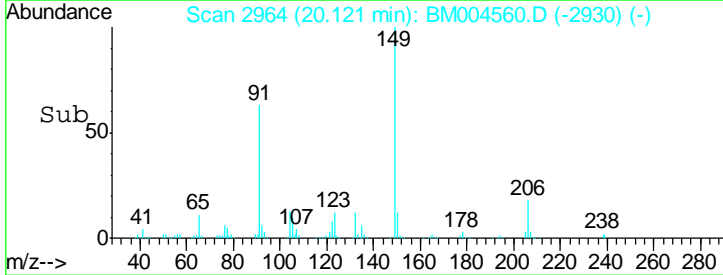
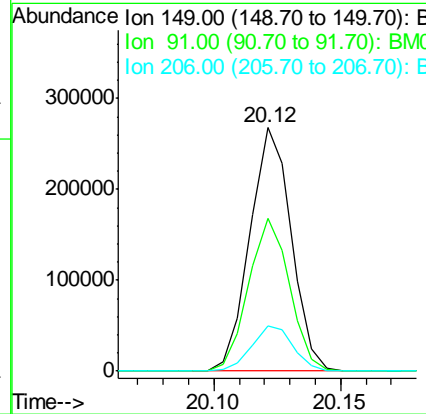
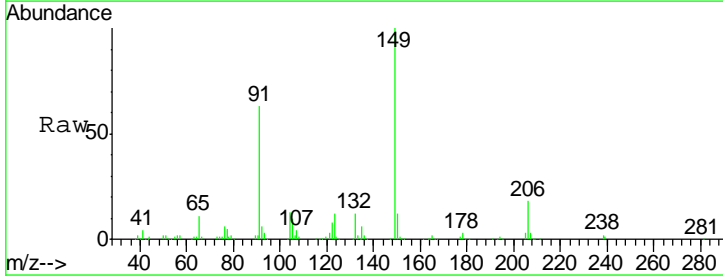
Instrument :
 BNA_M
 ClientSampled :
 SSTDICC0.5

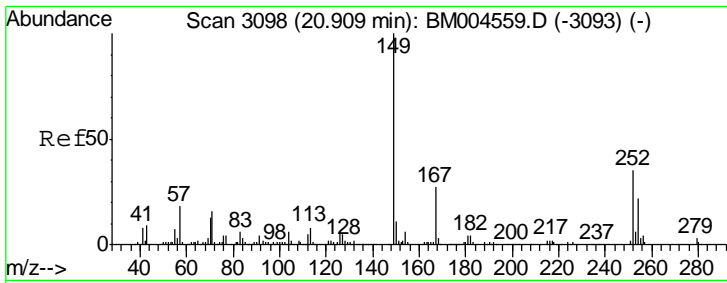
Tgt Ion	Resp	Lower	Upper
202	618967		
101	16.9	13.4	20.0
100	13.5	11.0	16.4



#81
 Butylbenzylphthalate
 Concen: 39.98 ng/ul
 RT: 20.12 min Scan# 2964
 Delta R.T. -0.00 min
 Lab File: BM004560.D
 Acq: 05 Mar 2016 02:35

Tgt Ion	Resp	Lower	Upper
149	305546		
91	62.6	51.2	76.8
206	18.4	14.0	21.0

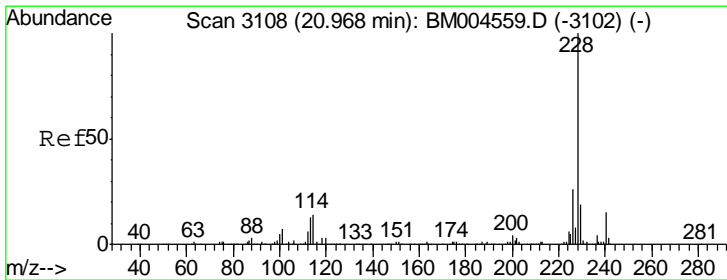
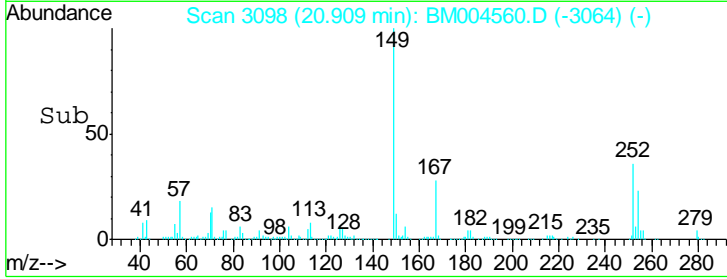
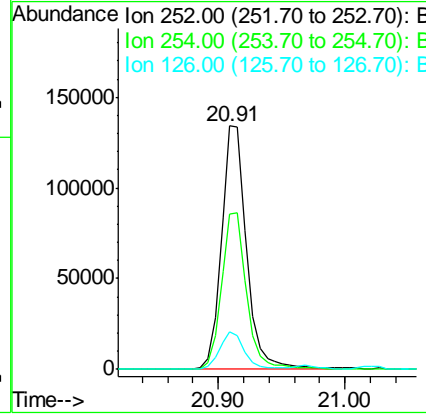
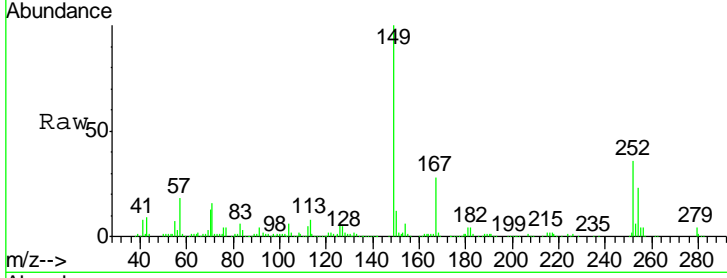




#82
 3,3'-Dichlorobenzidine
 Concen: 49.60 ng/ul
 RT: 20.91 min Scan# 3098
 Delta R.T. -0.00 min
 Lab File: BM004560.D
 Acq: 05 Mar 2016 02:35

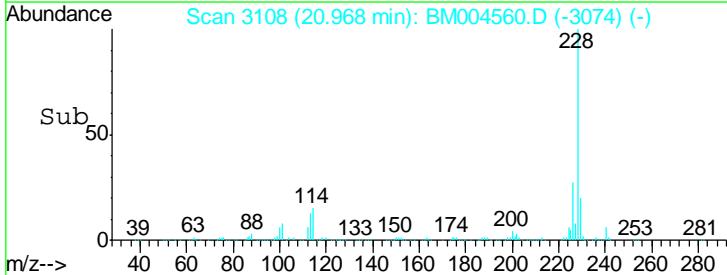
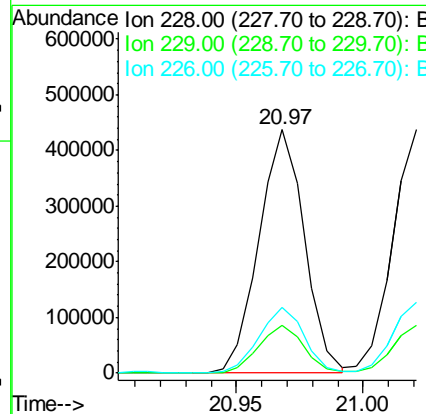
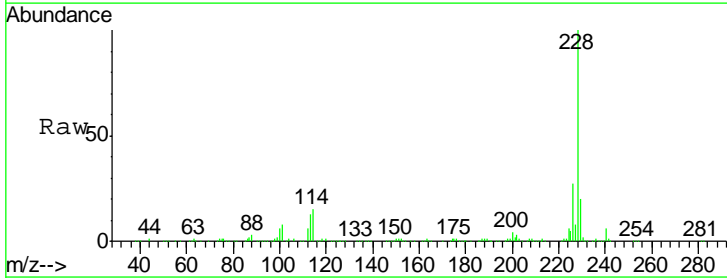
Instrument :
 BNA_M
 ClientSampled :
 SSTDICC0.5

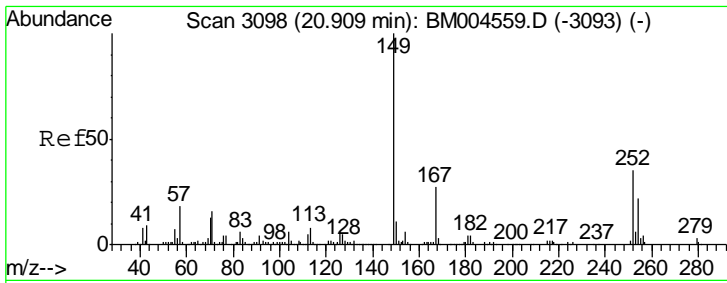
Tgt Ion	Resp	Lower	Upper
252	185785		
252	100		
254	64.0	51.4	77.0
126	15.6	13.4	20.2



#83
 Benzo(a)anthracene
 Concen: 39.70 ng/ul
 RT: 20.97 min Scan# 3108
 Delta R.T. -0.00 min
 Lab File: BM004560.D
 Acq: 05 Mar 2016 02:35

Tgt Ion	Resp	Lower	Upper
228	550139		
228	100		
229	19.8	15.5	23.3
226	26.9	21.0	31.6

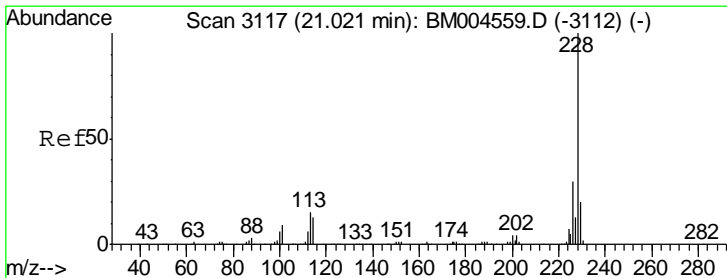
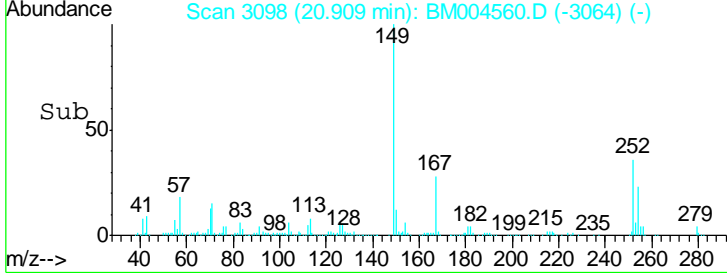
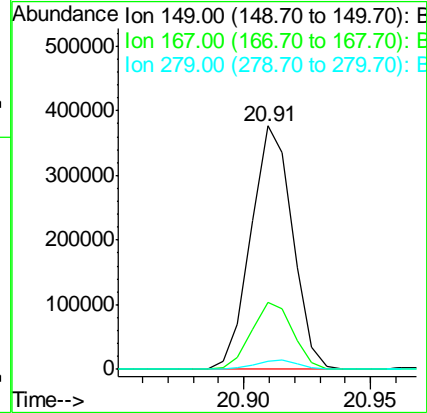
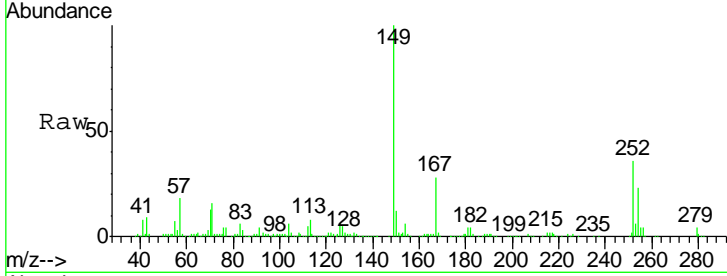




#84
 Bis(2-ethylhexyl)phthalate
 Concen: 38.84 ng/ul
 RT: 20.91 min Scan# 3098
 Delta R.T. -0.00 min
 Lab File: BM004560.D
 Acq: 05 Mar 2016 02:35

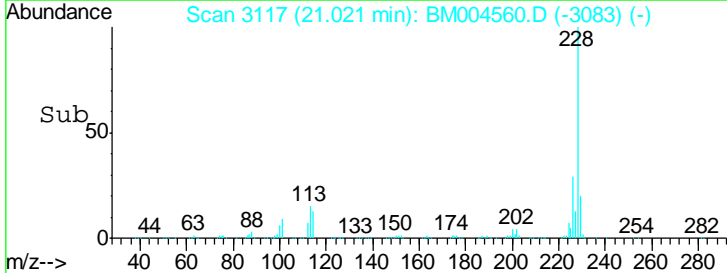
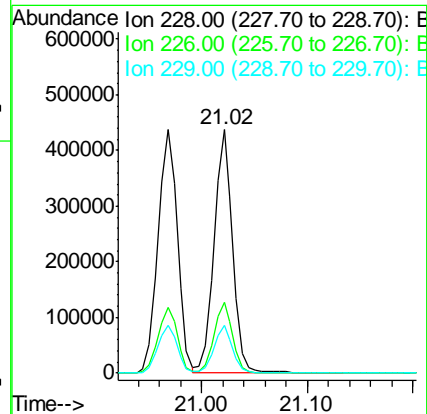
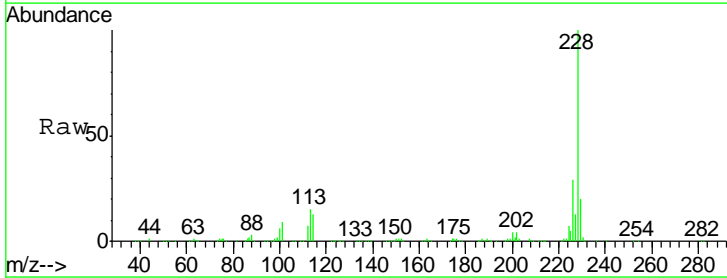
Instrument :
 BNA_M
 ClientSampleId :
 SSTDICC0.5

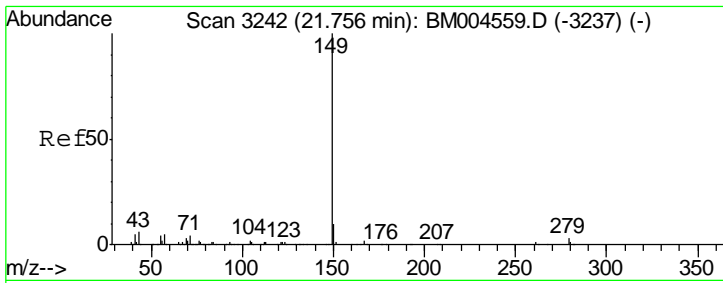
Tgt Ion	Resp	Lower	Upper
149	430754		
167	27.6	21.4	32.0
279	3.5	2.7	4.1



#85
 Chrysene
 Concen: 40.17 ng/ul
 RT: 21.02 min Scan# 3117
 Delta R.T. -0.00 min
 Lab File: BM004560.D
 Acq: 05 Mar 2016 02:35

Tgt Ion	Resp	Lower	Upper
228	538970		
226	28.9	23.8	35.6
229	19.6	15.7	23.5

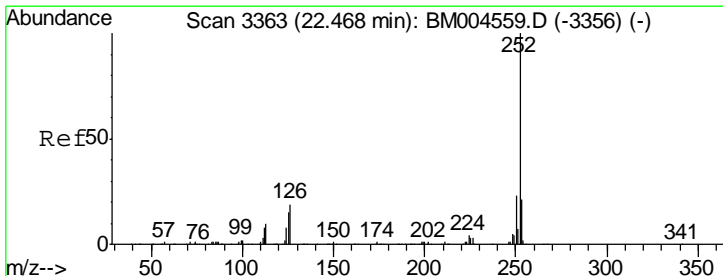
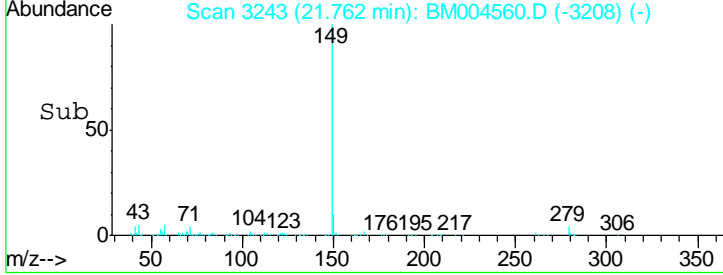
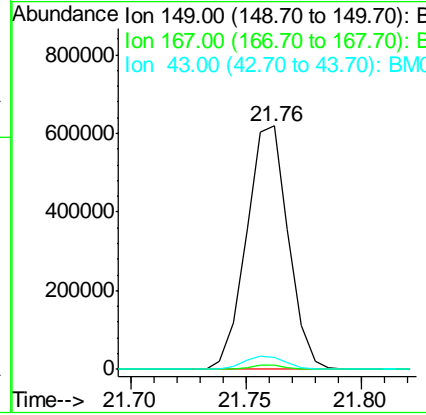
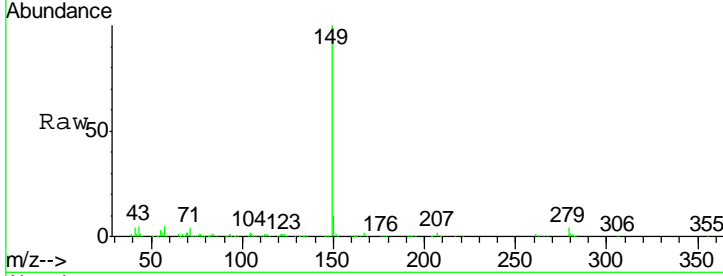




#87
 Di-n-octyl phthalate
 Concen: 40.89 ng/ul
 RT: 21.76 min Scan# 3243
 Delta R.T. 0.01 min
 Lab File: BM004560.D
 Acq: 05 Mar 2016 02:35

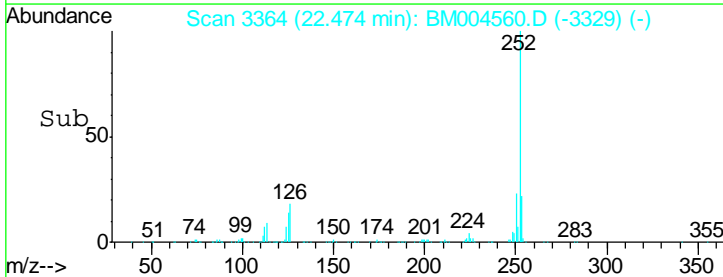
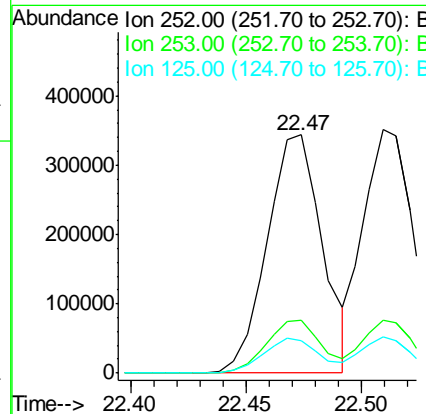
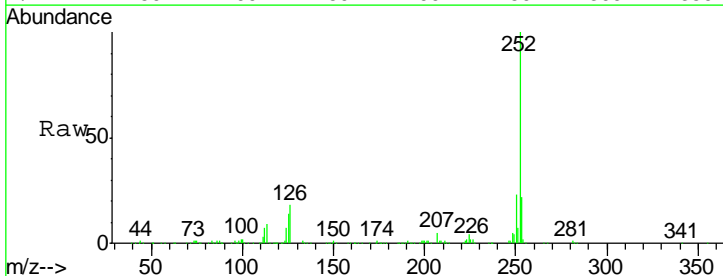
Instrument :
 BNA_M
 ClientSampleId :
 SSTDICC0.5

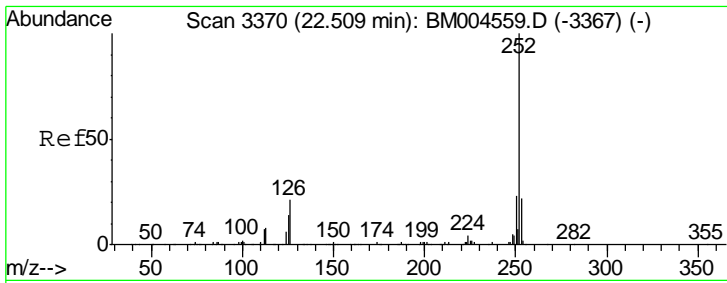
Tgt Ion	Resp	Lower	Upper
149	100		
167	1.6	1.2	1.8
43	5.1	4.6	6.8



#88
 Benzo(b)fluoranthene
 Concen: 40.10 ng/ul
 RT: 22.47 min Scan# 3364
 Delta R.T. 0.01 min
 Lab File: BM004560.D
 Acq: 05 Mar 2016 02:35

Tgt Ion	Resp	Lower	Upper
252	100		
253	22.0	17.1	25.7
125	13.7	11.7	17.5

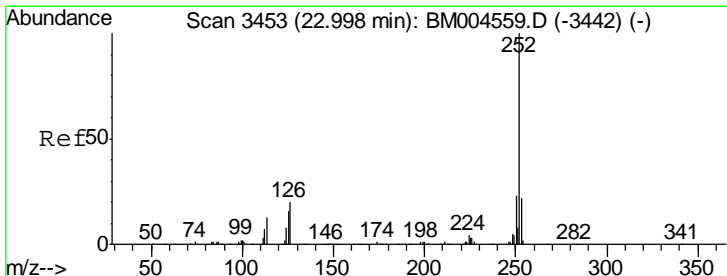
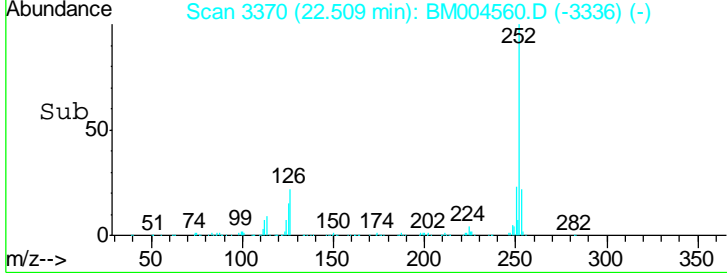
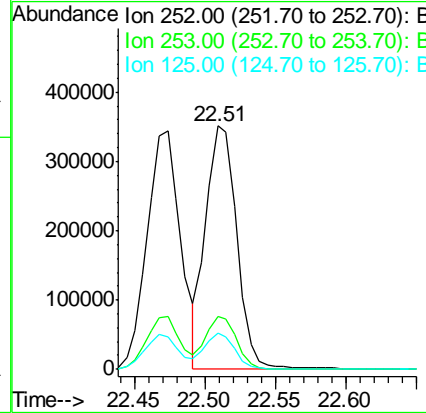
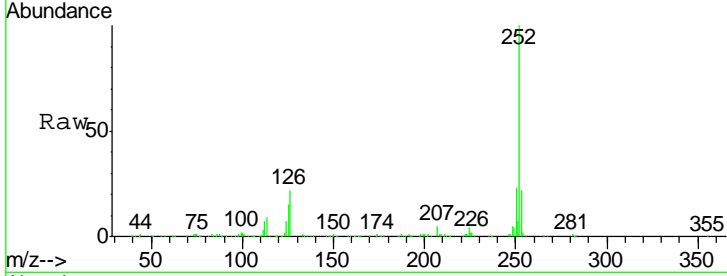




#89
 Benzo(k)fluoranthene
 Concen: 39.73 ng/ul
 RT: 22.51 min Scan# 3370
 Delta R.T. -0.00 min
 Lab File: BM004560.D
 Acq: 05 Mar 2016 02:35

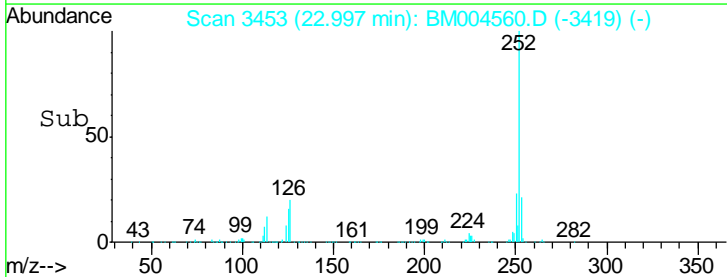
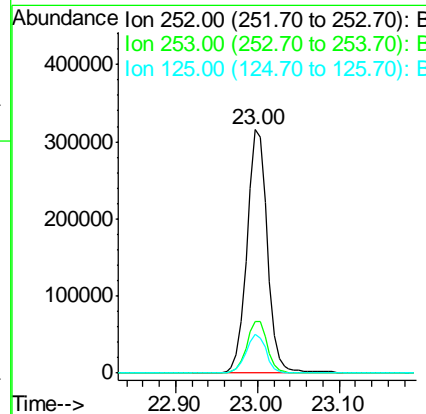
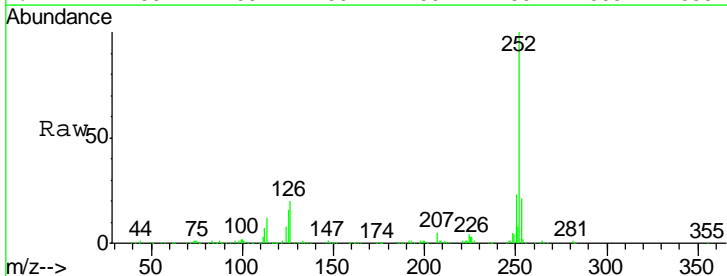
Instrument :
 BNA_M
 ClientSampled :
 SSTDICC0.5

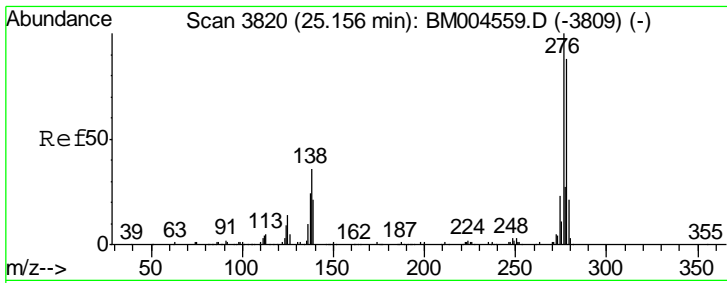
Tgt Ion	Resp	Lower	Upper
252	100		
253	21.9	17.5	26.3
125	14.9	11.7	17.5



#91
 Benzo(a)pyrene
 Concen: 40.09 ng/ul
 RT: 23.00 min Scan# 3453
 Delta R.T. -0.00 min
 Lab File: BM004560.D
 Acq: 05 Mar 2016 02:35

Tgt Ion	Resp	Lower	Upper
252	100		
253	21.5	17.7	26.5
125	15.9	12.6	18.8

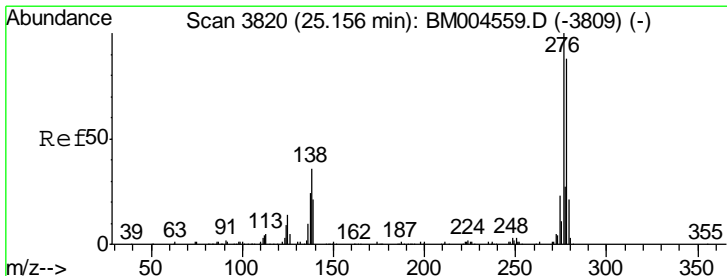
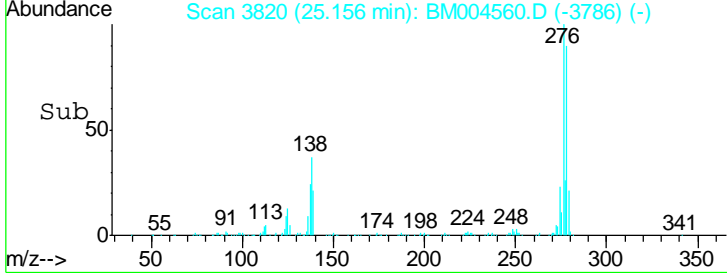
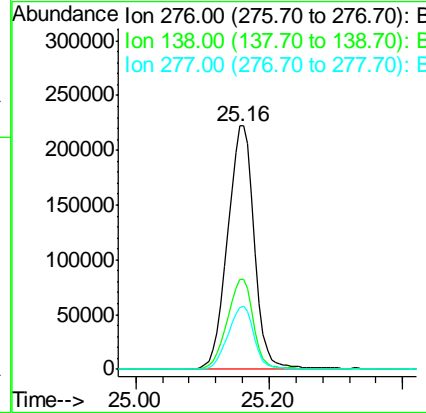
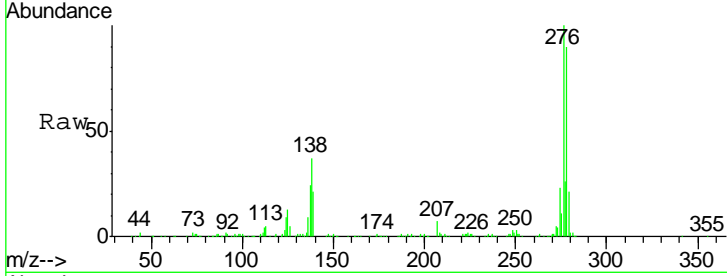




#92
 Indeno(1,2,3-cd)pyrene
 Concen: 39.95 ng/ul
 RT: 25.16 min Scan# 3820
 Delta R.T. -0.00 min
 Lab File: BM004560.D
 Acq: 05 Mar 2016 02:35

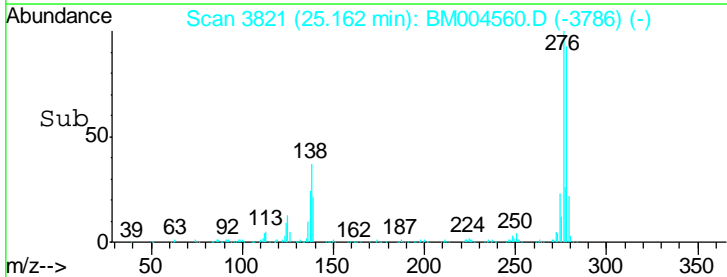
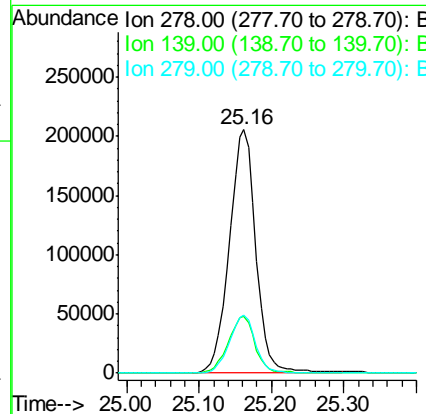
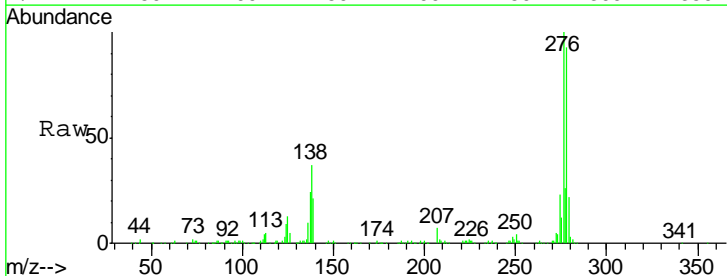
Instrument :
 BNA_M
 ClientSampleId :
 SSTDICC0.5

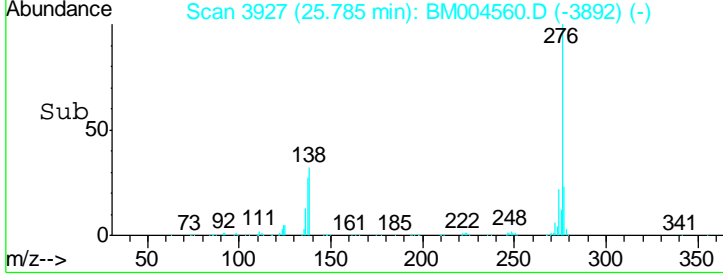
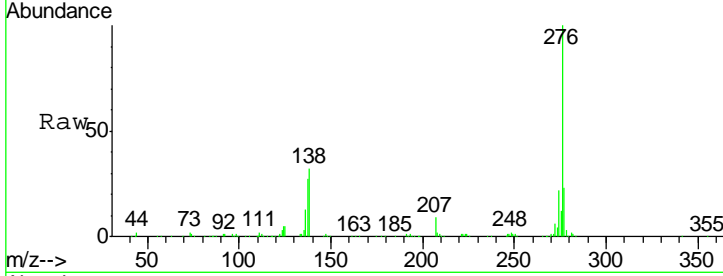
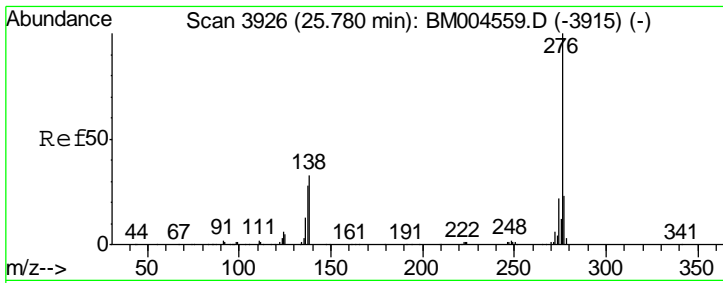
Tgt Ion	Resp	Lower	Upper
276	100		
138	37.1	28.8	43.2
277	25.6	21.3	31.9



#93
 Dibenzo(a,h)anthracene
 Concen: 40.02 ng/ul
 RT: 25.16 min Scan# 3821
 Delta R.T. 0.01 min
 Lab File: BM004560.D
 Acq: 05 Mar 2016 02:35

Tgt Ion	Resp	Lower	Upper
278	100		
139	23.1	19.4	29.0
279	23.8	18.8	28.2





#94
 Benzo(g,h,i)perylene
 Concen: 39.87 ng/ul
 RT: 25.79 min Scan# 3927
 Delta R.T. 0.01 min
 Lab File: BM004560.D
 Acq: 05 Mar 2016 02:35

Instrument :
 BNA_M
 ClientSampleId :
 SSTDICC0.5

Tgt Ion	Resp	Lower	Upper
276	540485		
138	31.6	26.0	39.0
277	23.4	18.2	27.2

