

Data Path : Z:\svoasrv\HPCHEM1\BNA_M\Data\BM030723\
 Data File : BM038875.D
 Acq On : 06 Mar 2023 17:21
 Operator : CG/JU
 Sample : 01746-01
 Misc :
 ALS Vial : 5 Sample Multiplier: 1

Instrument :
 BNA_M
 ClientSampleId :
 DCAC1

Quant Time: Mar 06 23:59:25 2023
 Quant Method : Z:\svoasrv\HPCHEM1\BNA_M\Methods\SFAM-EPA-BM022823.M
 Quant Title : SVOA CALIBRATION
 QLast Update : Mon Mar 06 23:57:30 2023
 Response via : Initial Calibration

Compound	R.T.	QIon	Response	Conc	Units	Dev(Min)
Internal Standards						
1) 1,4-Dichlorobenzene-d4	8.004	152	251748	20.000	ng/ul	0.00
20) Naphthalene-d8	10.833	136	1156366	20.000	ng/ul	0.01
38) Acenaphthene-d10	14.639	164	757398	20.000	ng/ul	0.00
64) Phenanthrene-d10	17.386	188	1599734	20.000	ng/ul	0.00
79) Chrysene-d12	21.562	240	1436467	20.000	ng/ul	0.00
88) Perylene-d12	24.015	264	1611415	20.000	ng/ul	0.00

Compound	R.T.	QIon	Response	Conc	Units	Dev(Min)
System Monitoring Compounds						
3) 1,4-Dioxane-d8	3.381	96	37393	5.546	ng/uL	0.00
4) Pyridine-d5	3.805	84	214239	11.558	ng/ul	0.00
7) Phenol-d5	7.151	99	149702	6.343	ng/ul	0.00
9) Bis-(2-Chloroethyl)eth...	7.328	67	535145	35.486	ng/ul	0.00
11) 2-Chlorophenol-d4	7.528	132	469481	26.695	ng/ul	0.00
15) 4-Methylphenol-d8	8.710	113	298034	16.029	ng/ul	0.00
21) Nitrobenzene-d5	9.175	128	326325	40.198	ng/ul	0.00
24) 2-Nitrophenol-d4	9.898	143	295003	38.781	ng/ul	0.00
28) 2,4-Dichlorophenol-d3	10.439	165	554671	31.380	ng/ul	0.00
31) 4-Chloroaniline-d4	10.957	131	776138	26.343	ng/ul	0.00
46) Dimethylphthalate-d6	14.057	166	2367708	40.361	ng/ul	0.00
49) Acenaphthylene-d8	14.333	160	2644941	38.576	ng/ul	0.00
54) 4-Nitrophenol-d4	14.821	143	65958	5.617	ng/ul	0.00
60) Fluorene-d10	15.633	176	2077920	40.163	ng/ul	0.00
65) 4,6-Dinitro-2-methylph...	15.745	200	423012	50.863	ng/ul	0.00
73) Anthracene-d10	17.486	188	3322051	42.114	ng/ul	0.00
81) Pyrene-d10	19.774	212	3854570	48.788	ng/ul	0.00
92) Benzo(a)pyrene-d12	23.856	264	3672832	45.229	ng/ul	0.00

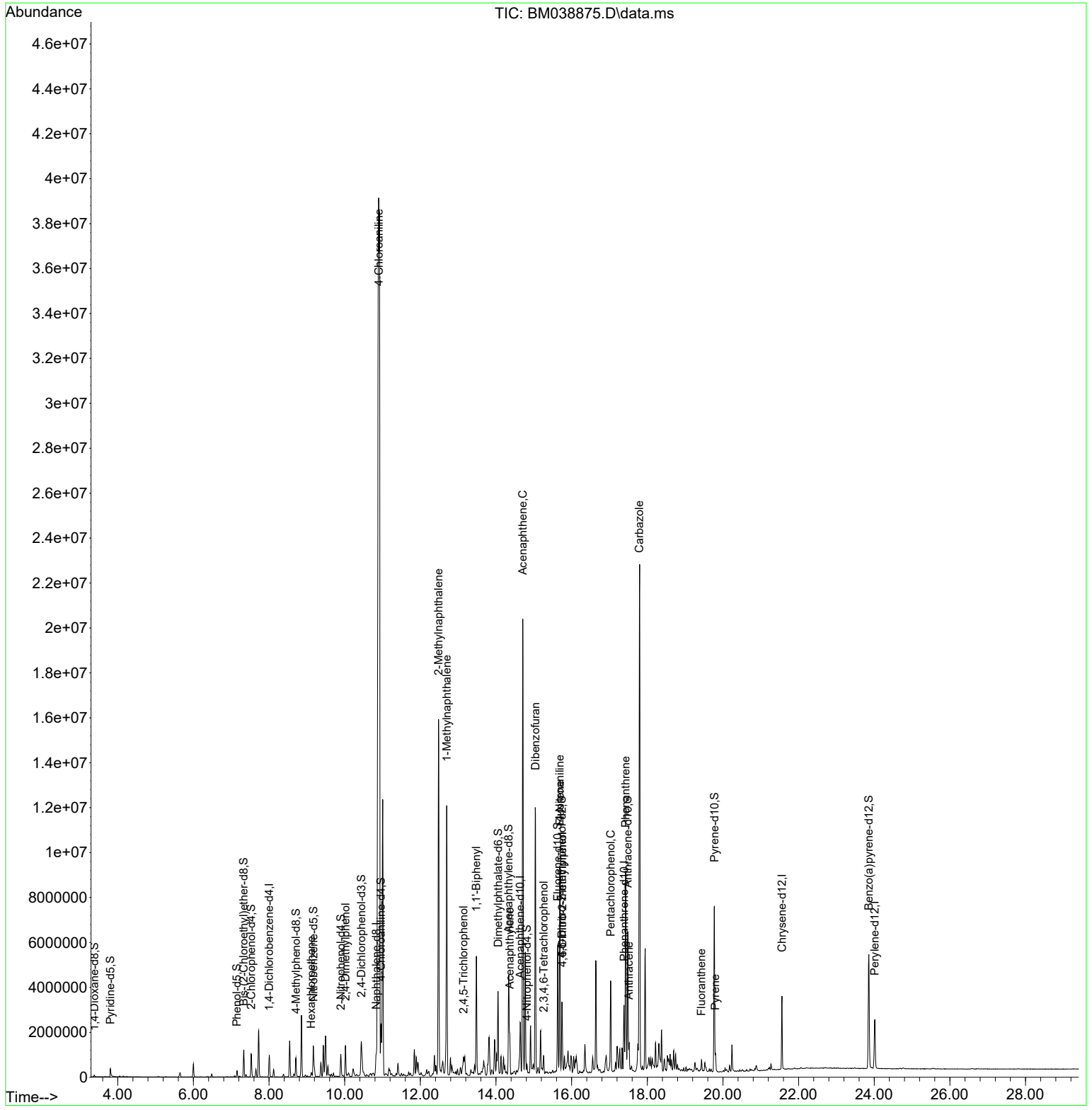
Compound	R.T.	QIon	Response	Conc	Units	Qvalue
Target Compounds						
19) Hexachloroethane	9.116	117	8031	1.107	ng/ul#	9
26) 2,4-Dimethylphenol	10.022	107	443966	20.033	ng/ul#	92
32) 4-Chloroaniline	10.904	127	8492274	284.680	ng/ul#	9
36) 2-Methylnaphthalene	12.480	142	7202663	167.233	ng/ul	99
37) 1-Methylnaphthalene	12.698	142	5187407	119.538	ng/ul	100
42) 2,4,5-Trichlorophenol	13.145	196	115870	7.367	ng/ul	99
43) 1,1'-Biphenyl	13.480	154	2540421	42.524	ng/ul	99
50) Acenaphthylene	14.363	152	789704	10.385	ng/ul	98
52) Acenaphthene	14.710	153	7889815	150.735	ng/ul	98
56) Dibenzofuran	15.045	168	7235004	99.564	ng/ul	98
58) 2,3,4,6-Tetrachlorophenol	15.263	232	112716	8.232	ng/ul#	97
61) Fluorene	15.692	166	4012010	65.850	ng/ul	100
63) 4-Nitroaniline	15.686	138	45345	3.713	ng/ul#	22
66) 4,6-Dinitro-2-methylph...	15.751	198	442299	51.388	ng/ul#	62
71) Pentachlorophenol	17.033	266	458585	37.818	ng/ul	99
72) Phenanthrene	17.427	178	4818653	52.134	ng/ul	99
74) Anthracene	17.515	178	433297	4.604	ng/ul	99
77) Carbazole	17.792	167	14421193	165.015	ng/ul	94
80) Fluoranthene	19.433	202	293311	3.228	ng/ul	97
82) Pyrene	19.798	202	143292	1.438	ng/ul	99

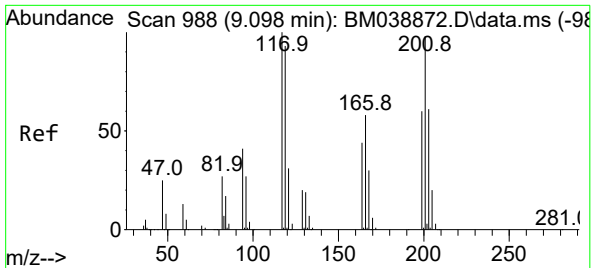
(#) = qualifier out of range (m) = manual integration (+) = signals summed

Data Path : Z:\svoasrv\HPCHEM1\BNA_M\Data\BM030723\
 Data File : BM038875.D
 Acq On : 06 Mar 2023 17:21
 Operator : CG/JU
 Sample : 01746-01
 Misc :
 ALS Vial : 5 Sample Multiplier: 1

Instrument :
 BNA_M
 ClientSampleId :
 DCAC1

Quant Time: Mar 06 23:59:25 2023
 Quant Method : Z:\svoasrv\HPCHEM1\BNA_M\Methods\SFAM-EPA-BM022823.M
 Quant Title : SVOA CALIBRATION
 QLast Update : Mon Mar 06 23:57:30 2023
 Response via : Initial Calibration

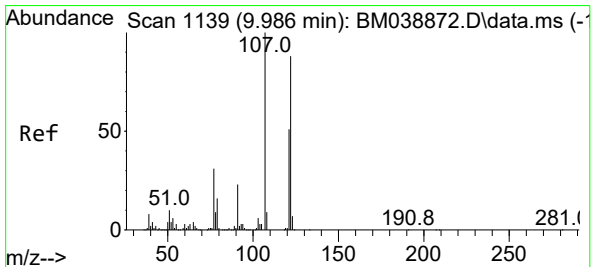
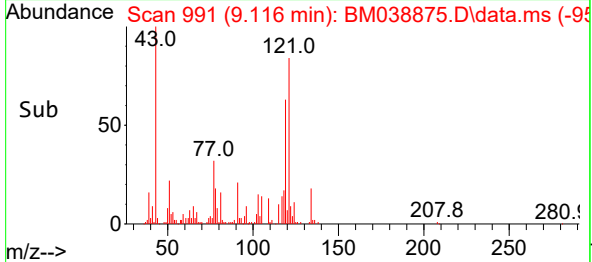
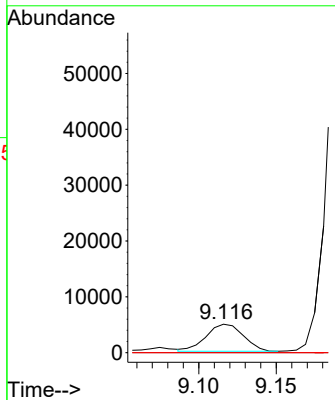
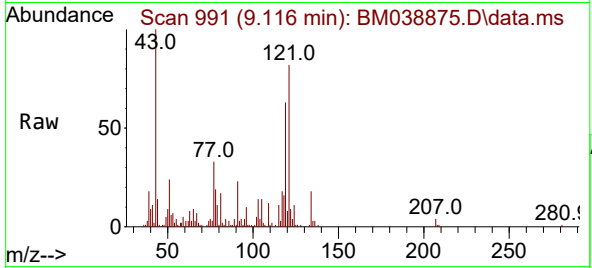




#19
 Hexachloroethane
 Concen: 1.107 ng/ul
 RT: 9.116 min Scan# 911
 Delta R.T. 0.018 min
 Lab File: BM038875.D
 Acq: 06 Mar 2023 17:21

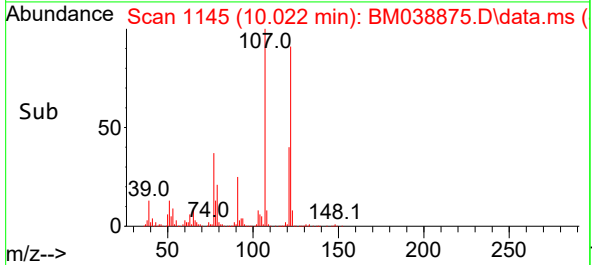
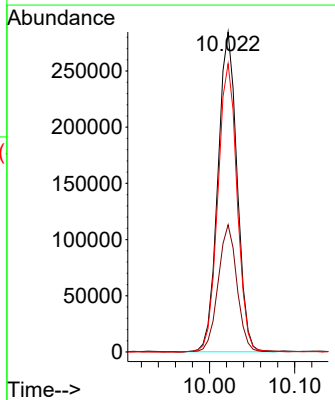
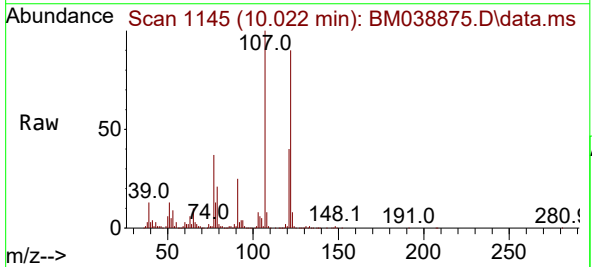
Instrument :
 BNA_M
 ClientSampleId :
 DCAC1

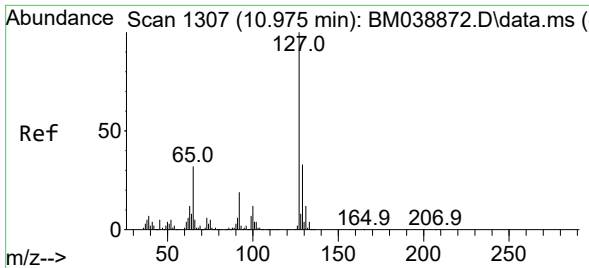
Tgt Ion:117 Resp: 8031
 Ion Ratio Lower Upper
 117 100
 201 0.0 76.6 115.0#
 199 0.0 46.6 70.0#



#26
 2,4-Dimethylphenol
 Concen: 20.033 ng/ul
 RT: 10.022 min Scan# 1145
 Delta R.T. 0.035 min
 Lab File: BM038875.D
 Acq: 06 Mar 2023 17:21

Tgt Ion:107 Resp: 443966
 Ion Ratio Lower Upper
 107 100
 121 39.7 39.8 59.8#
 122 90.1 69.0 103.4

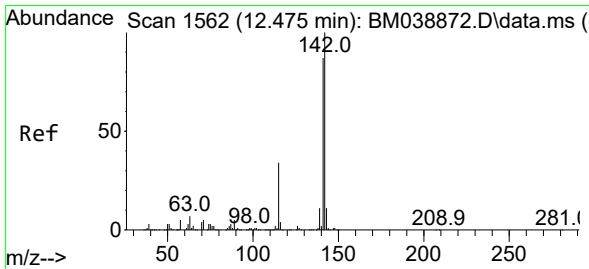
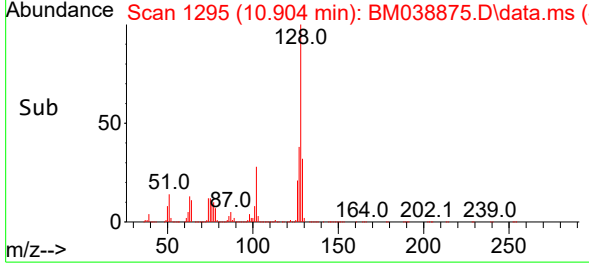
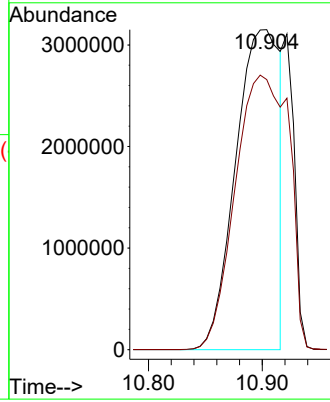
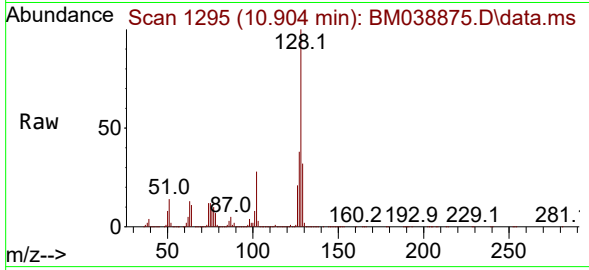




#32
 4-Chloroaniline
 Concen: 284.680 ng/ul
 RT: 10.904 min Scan# 11
 Delta R.T. -0.071 min
 Lab File: BM038875.D
 Acq: 06 Mar 2023 17:21

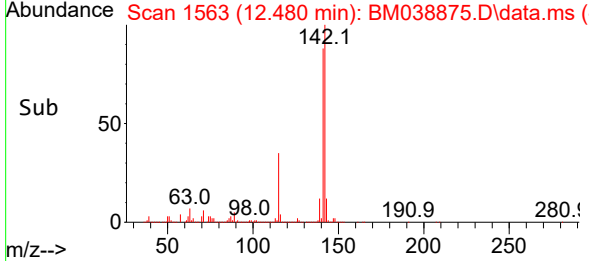
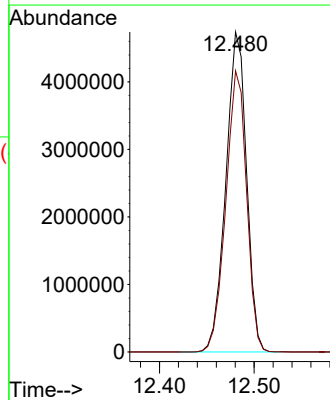
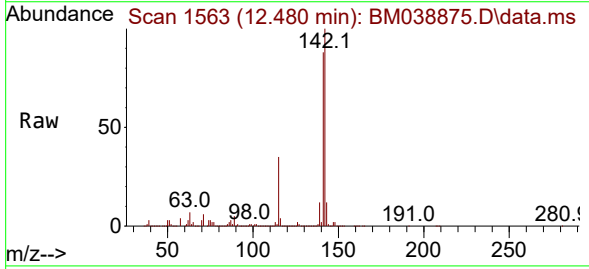
Instrument :
 BNA_M
 ClientSampleId :
 DCAC1

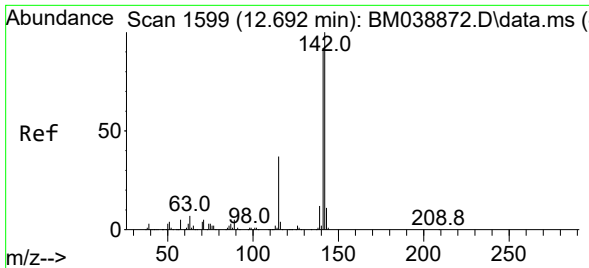
Tgt Ion:127 Resp: 8492274
 Ion Ratio Lower Upper
 127 100
 129 84.4 26.3 39.5#



#36
 2-Methylnaphthalene
 Concen: 167.233 ng/ul
 RT: 12.480 min Scan# 1563
 Delta R.T. 0.006 min
 Lab File: BM038875.D
 Acq: 06 Mar 2023 17:21

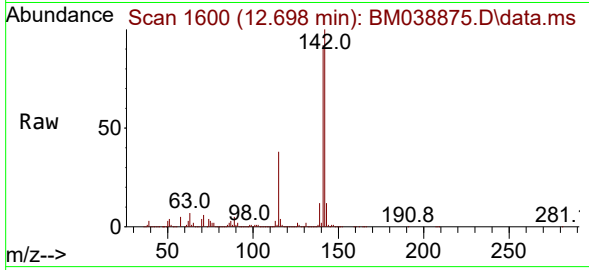
Tgt Ion:142 Resp: 7202663
 Ion Ratio Lower Upper
 142 100
 141 87.8 71.0 106.6



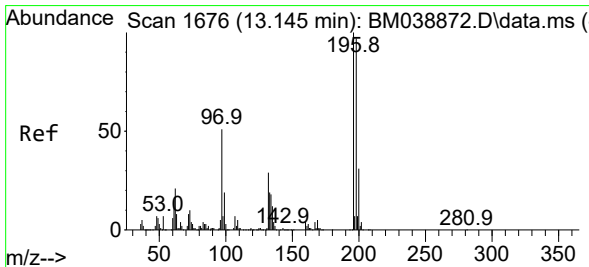
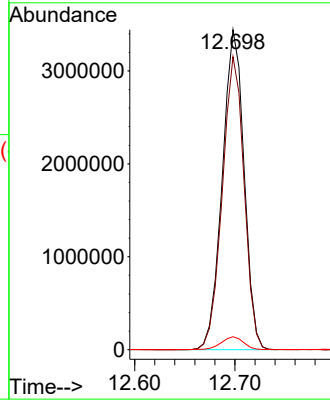
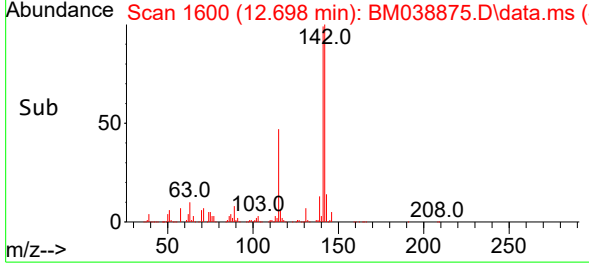


#37
 1-Methylnaphthalene
 Concen: 119.538 ng/u1
 RT: 12.698 min Scan# 1
 Delta R.T. 0.006 min
 Lab File: BM038875.D
 Acq: 06 Mar 2023 17:21

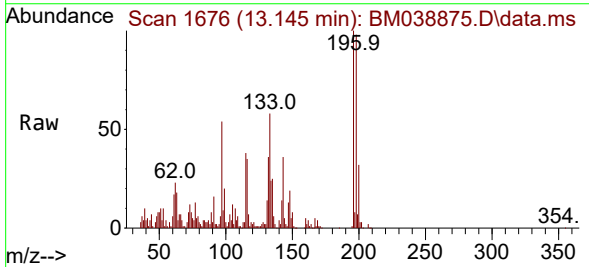
Instrument :
 BNA_M
 ClientSampleId :
 DCAC1



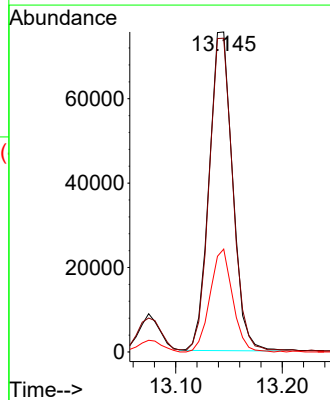
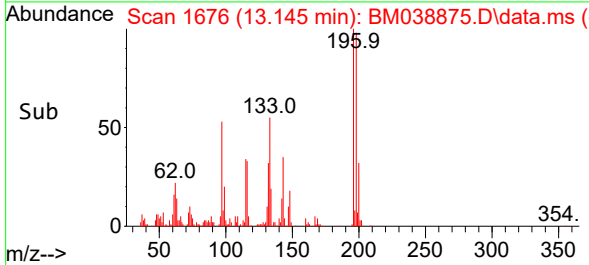
Tgt Ion:142 Resp: 5187407
 Ion Ratio Lower Upper
 142 100
 141 91.6 73.4 110.0
 116 4.1 3.2 4.8

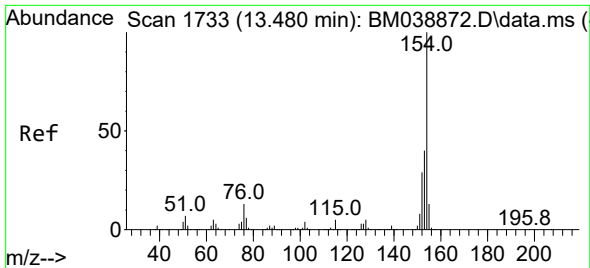


#42
 2,4,5-Trichlorophenol
 Concen: 7.367 ng/u1
 RT: 13.145 min Scan# 1676
 Delta R.T. -0.000 min
 Lab File: BM038875.D
 Acq: 06 Mar 2023 17:21



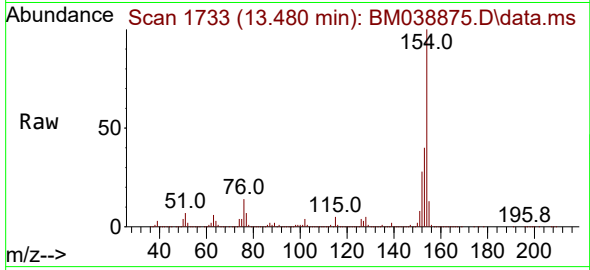
Tgt Ion:196 Resp: 115870
 Ion Ratio Lower Upper
 196 100
 198 98.0 77.5 116.3
 200 32.2 24.8 37.2





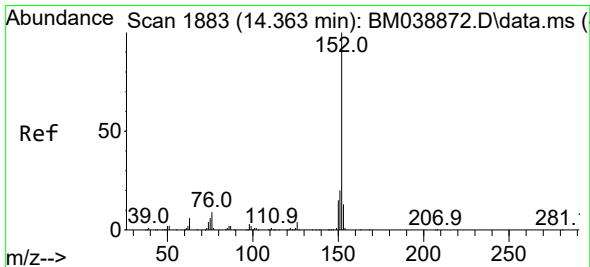
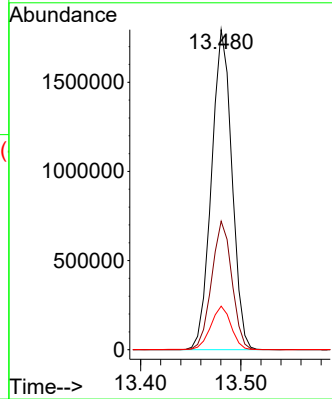
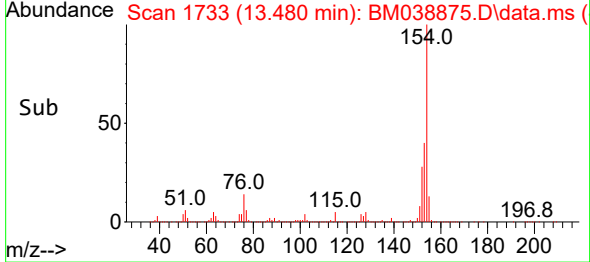
#43
 1,1'-Biphenyl
 Concen: 42.524 ng/uI
 RT: 13.480 min Scan# 1733
 Delta R.T. -0.000 min
 Lab File: BM038875.D
 Acq: 06 Mar 2023 17:21

Instrument :
 BNA_M
 ClientSampleId :
 DCAC1

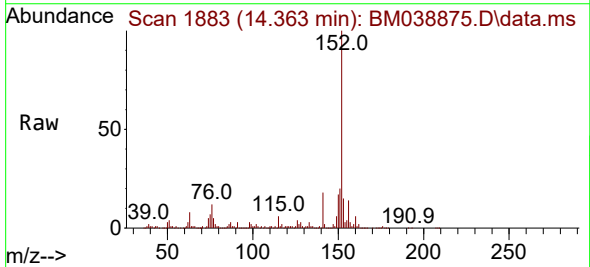


Tgt Ion:154 Resp: 2540421

Ion	Ratio	Lower	Upper
154	100		
153	40.2	31.3	46.9
76	13.6	11.0	16.6

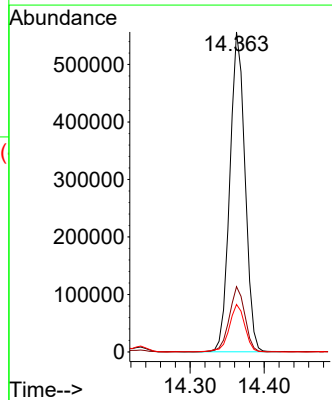
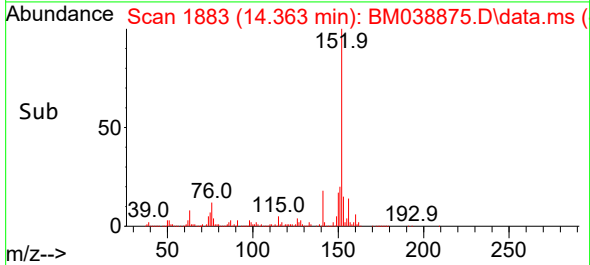


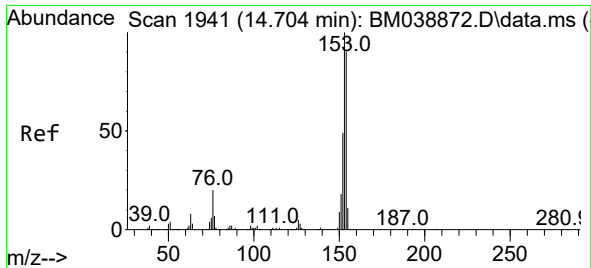
#50
 Acenaphthylene
 Concen: 10.385 ng/uI
 RT: 14.363 min Scan# 1883
 Delta R.T. -0.000 min
 Lab File: BM038875.D
 Acq: 06 Mar 2023 17:21



Tgt Ion:152 Resp: 789704

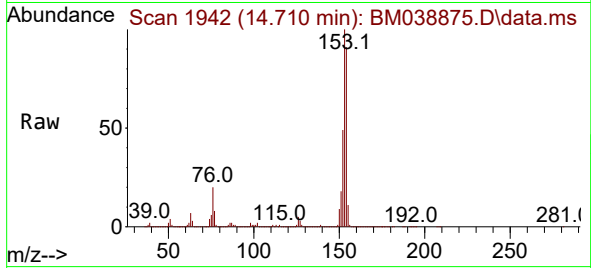
Ion	Ratio	Lower	Upper
152	100		
151	20.4	15.9	23.9
153	14.9	10.4	15.6



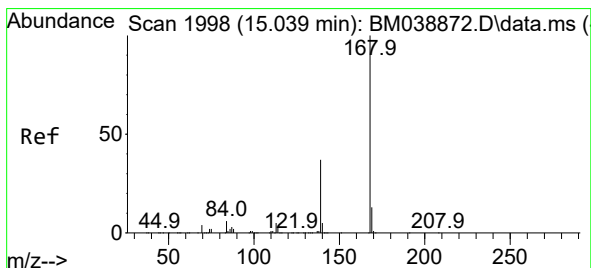
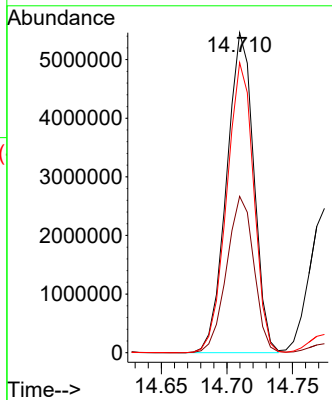
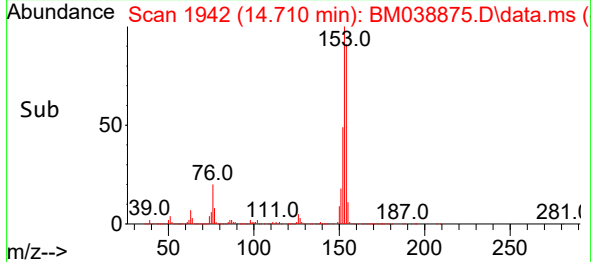


#52
 Acenaphthene
 Concen: 150.735 ng/uI
 RT: 14.710 min Scan# 1942
 Delta R.T. 0.006 min
 Lab File: BM038875.D
 Acq: 06 Mar 2023 17:21

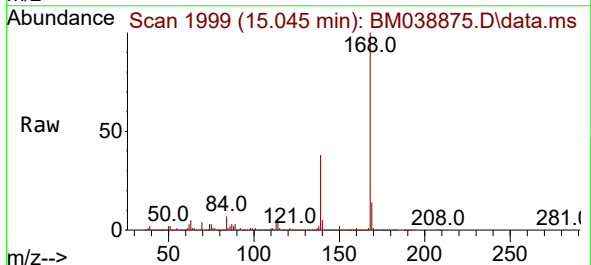
Instrument :
 BNA_M
 ClientSampleId :
 DCAC1



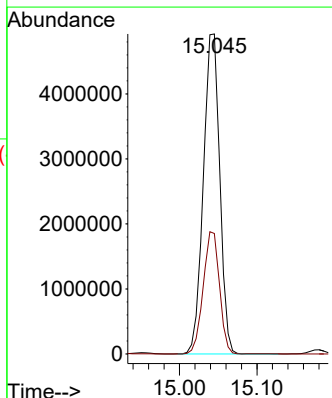
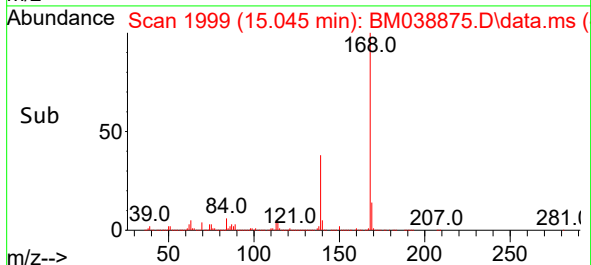
Tgt Ion:153 Resp: 7889815
 Ion Ratio Lower Upper
 153 100
 152 48.9 39.1 58.7
 154 90.7 70.4 105.6

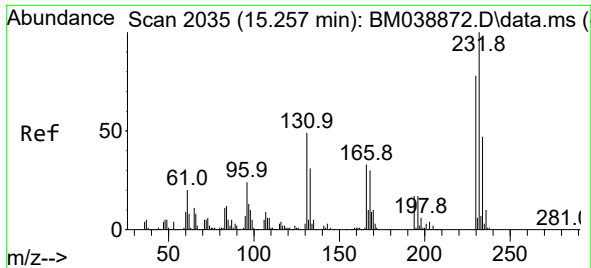


#56
 Dibenzofuran
 Concen: 99.564 ng/uI
 RT: 15.045 min Scan# 1999
 Delta R.T. 0.006 min
 Lab File: BM038875.D
 Acq: 06 Mar 2023 17:21



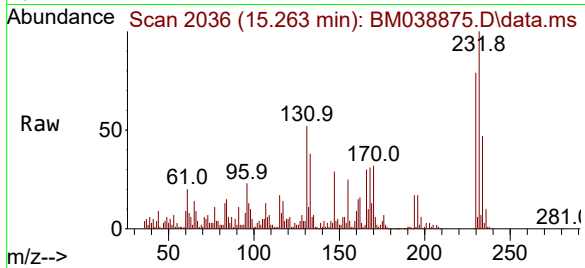
Tgt Ion:168 Resp: 7235004
 Ion Ratio Lower Upper
 168 100
 139 37.6 30.9 46.3





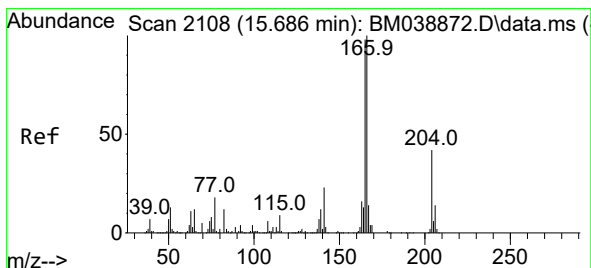
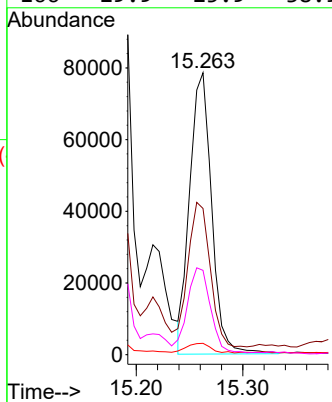
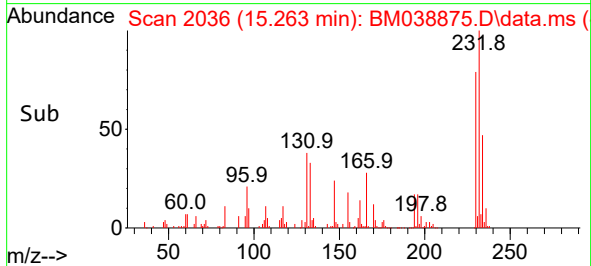
#58
 2,3,4,6-Tetrachlorophenol
 Concen: 8.232 ng/ul
 RT: 15.263 min Scan# 2036
 Delta R.T. 0.006 min
 Lab File: BM038875.D
 Acq: 06 Mar 2023 17:21

Instrument : BNA_M
 ClientSampleId : DCAC1



Tgt Ion: 232 Resp: 112716

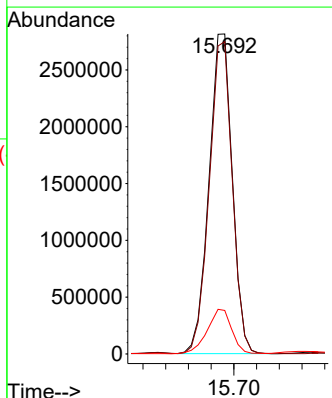
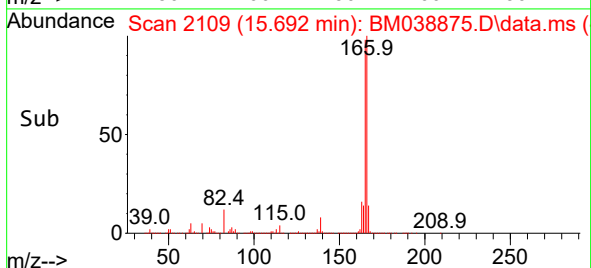
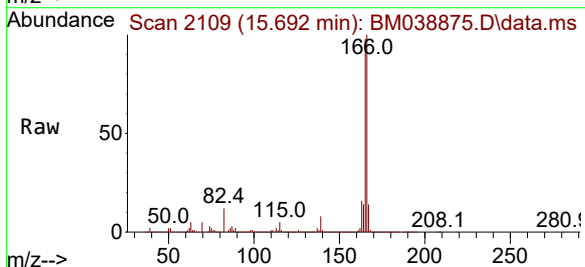
Ion	Ratio	Lower	Upper
232	100		
131	51.9	40.6	60.8
130	4.0	2.0	3.0
166	29.9	25.9	38.9

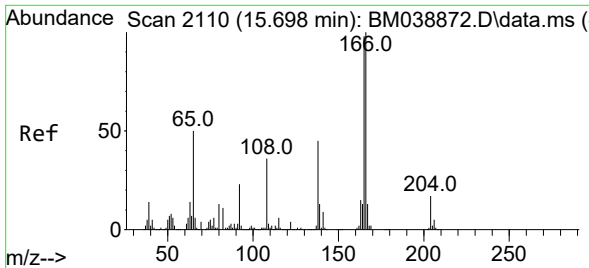


#61
 Fluorene
 Concen: 65.850 ng/ul
 RT: 15.692 min Scan# 2109
 Delta R.T. 0.006 min
 Lab File: BM038875.D
 Acq: 06 Mar 2023 17:21

Tgt Ion: 166 Resp: 4012010

Ion	Ratio	Lower	Upper
166	100		
165	97.6	78.2	117.4
167	13.6	10.5	15.7

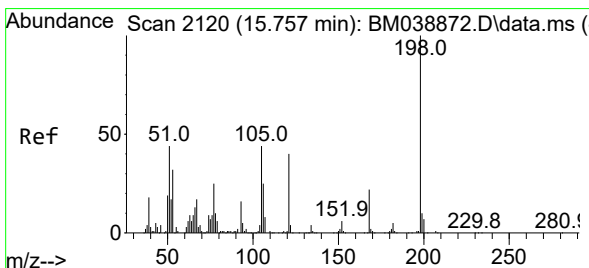
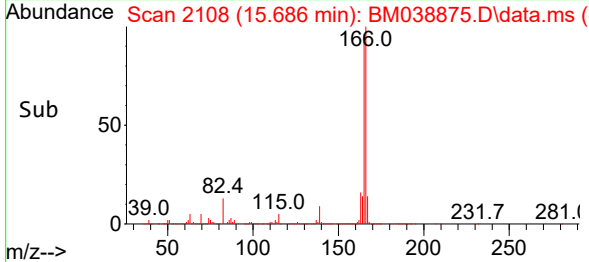
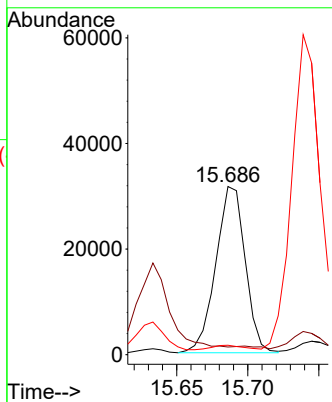
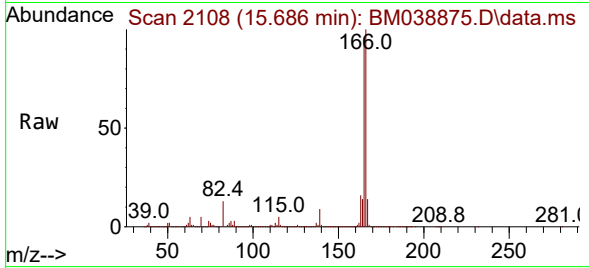




#63
 4-Nitroaniline
 Concen: 3.713 ng/ul
 RT: 15.686 min Scan# 2110
 Delta R.T. -0.012 min
 Lab File: BM038875.D
 Acq: 06 Mar 2023 17:21

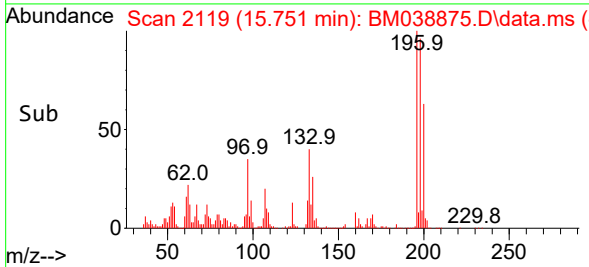
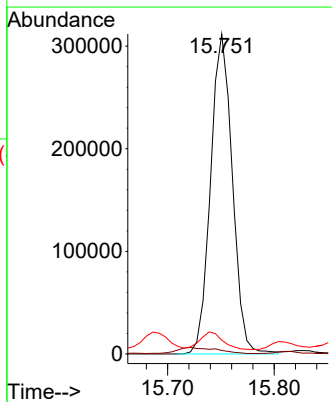
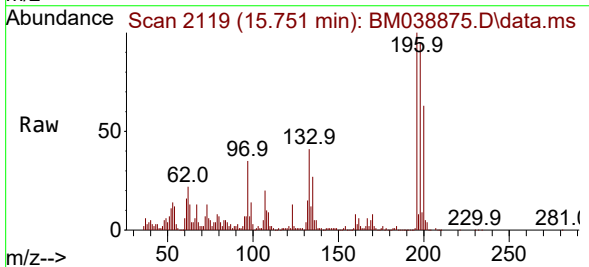
Instrument :
 BNA_M
 ClientSampleId :
 DCAC1

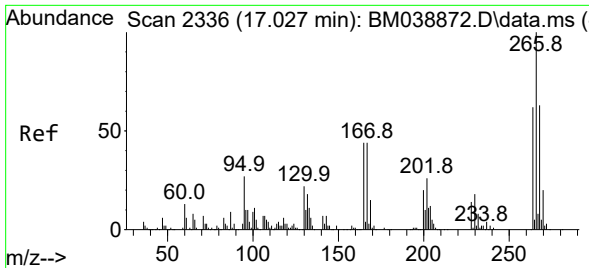
Tgt Ion:138 Resp: 45345
 Ion Ratio Lower Upper
 138 100
 92 4.6 41.8 62.8#
 108 5.7 65.0 97.6#



#66
 4,6-Dinitro-2-methylphenol
 Concen: 51.388 ng/ul
 RT: 15.751 min Scan# 2119
 Delta R.T. -0.006 min
 Lab File: BM038875.D
 Acq: 06 Mar 2023 17:21

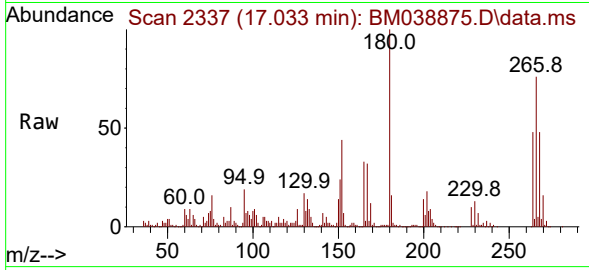
Tgt Ion:198 Resp: 442299
 Ion Ratio Lower Upper
 198 100
 182 1.1 3.5 5.3#
 77 4.3 21.0 31.6#



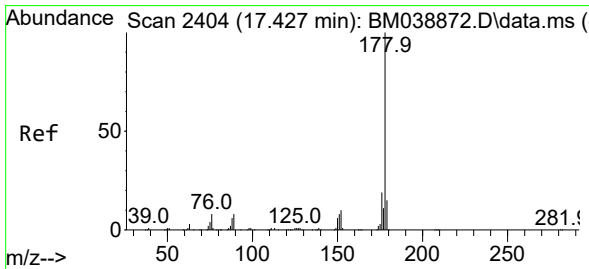
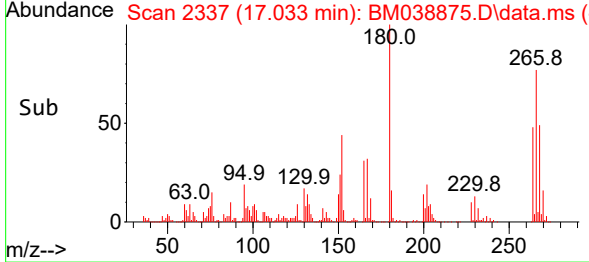
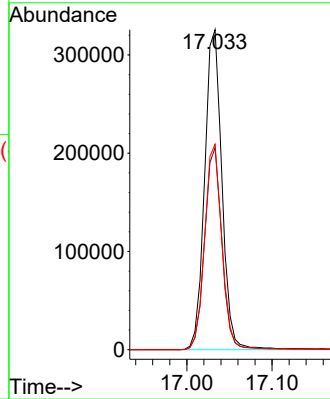


#71
 Pentachlorophenol
 Concen: 37.818 ng/u1
 RT: 17.033 min Scan# 21
 Delta R.T. 0.006 min
 Lab File: BM038875.D
 Acq: 06 Mar 2023 17:21

Instrument :
 BNA_M
 ClientSampleId :
 DCAC1

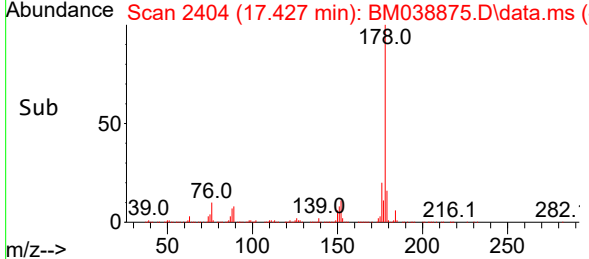
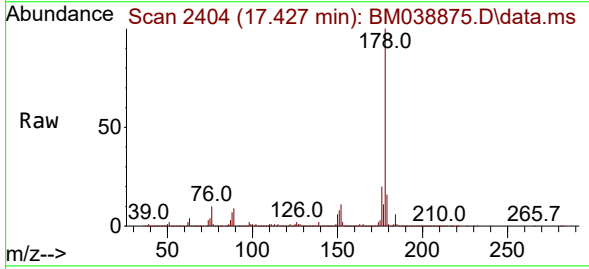
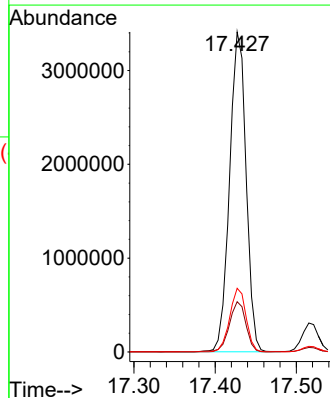


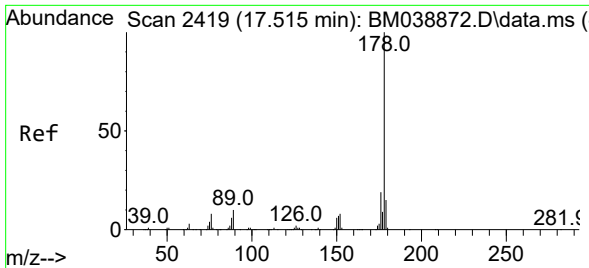
Tgt Ion:266 Resp: 458585
 Ion Ratio Lower Upper
 266 100
 264 63.1 51.0 76.6
 268 64.2 51.7 77.5



#72
 Phenanthrene
 Concen: 52.134 ng/u1
 RT: 17.427 min Scan# 2404
 Delta R.T. -0.000 min
 Lab File: BM038875.D
 Acq: 06 Mar 2023 17:21

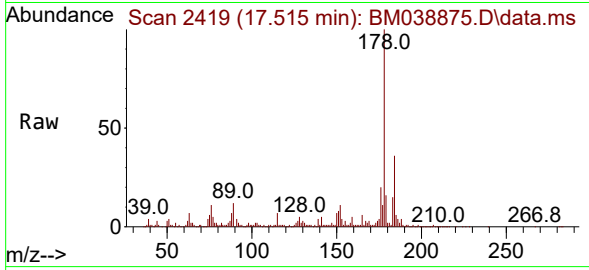
Tgt Ion:178 Resp: 4818653
 Ion Ratio Lower Upper
 178 100
 179 15.7 12.3 18.5
 176 19.9 15.7 23.5



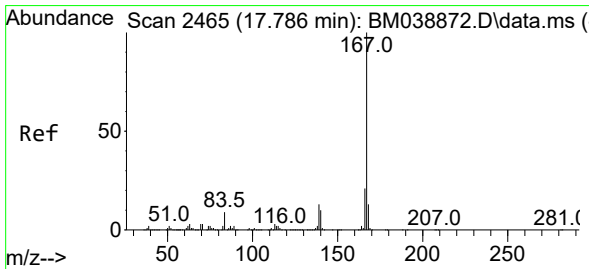
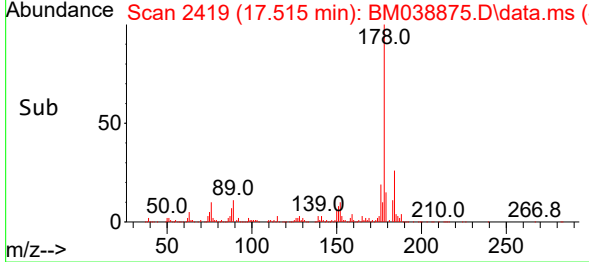
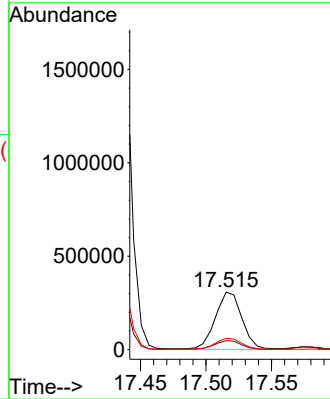


#74
 Anthracene
 Concen: 4.604 ng/u1
 RT: 17.515 min Scan# 2419
 Delta R.T. 0.000 min
 Lab File: BM038875.D
 Acq: 06 Mar 2023 17:21

Instrument :
 BNA_M
 ClientSampleId :
 DCAC1

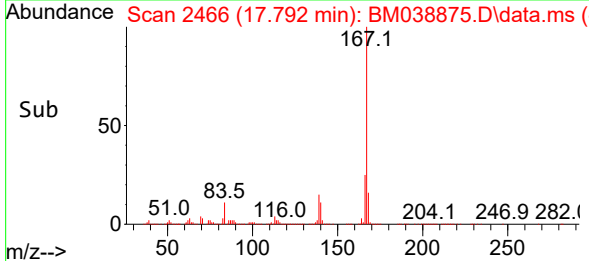
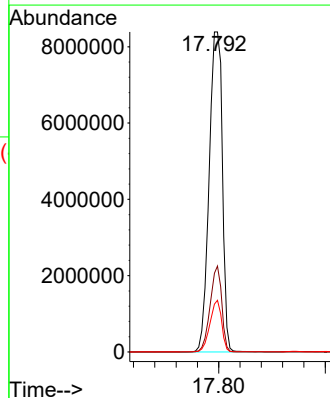
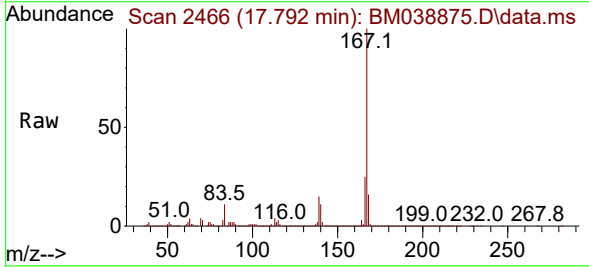


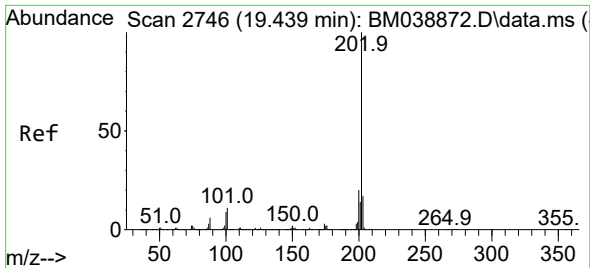
Tgt Ion:178 Resp: 433297
 Ion Ratio Lower Upper
 178 100
 179 15.5 12.5 18.7
 176 19.6 14.9 22.3



#77
 Carbazole
 Concen: 165.015 ng/u1
 RT: 17.792 min Scan# 2466
 Delta R.T. 0.006 min
 Lab File: BM038875.D
 Acq: 06 Mar 2023 17:21

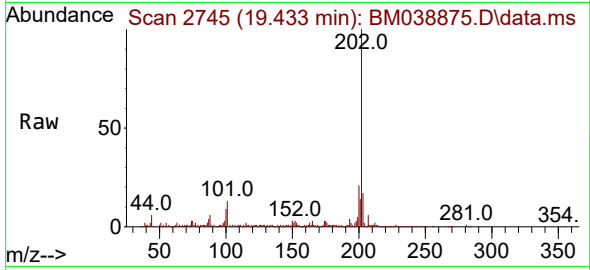
Tgt Ion:167 Resp:14421193
 Ion Ratio Lower Upper
 167 100
 166 24.6 17.2 25.8
 139 15.0 10.6 16.0



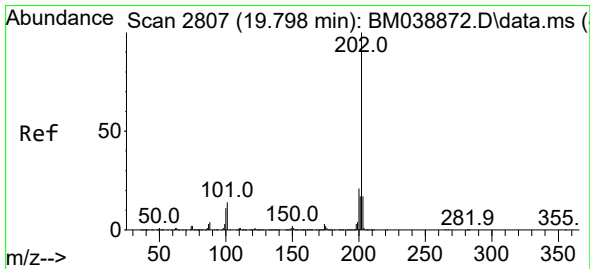
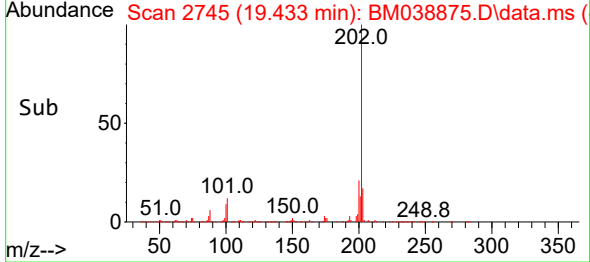
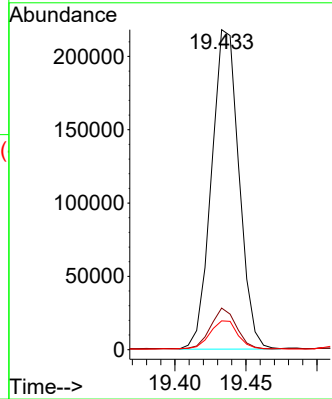


#80
 Fluoranthene
 Concen: 3.228 ng/u1
 RT: 19.433 min Scan# 2745
 Delta R.T. -0.006 min
 Lab File: BM038875.D
 Acq: 06 Mar 2023 17:21

Instrument :
 BNA_M
 ClientSampleId :
 DCAC1



Tgt Ion:202 Resp: 293311
 Ion Ratio Lower Upper
 202 100
 101 13.0 9.0 13.4
 100 9.0 6.9 10.3



#82
 Pyrene
 Concen: 1.438 ng/u1
 RT: 19.798 min Scan# 2807
 Delta R.T. -0.000 min
 Lab File: BM038875.D
 Acq: 06 Mar 2023 17:21

Tgt Ion:202 Resp: 143292
 Ion Ratio Lower Upper
 202 100
 101 14.5 11.2 16.8
 100 11.5 9.1 13.7

