

Data Path : Z:\svoasrv\HPCHEM1\BNA_M\Data\BM031122\
 Data File : BM034221.D
 Acq On : 11 Mar 2022 14:22
 Operator : CG/JU
 Sample : N1816-02
 Misc :
 ALS Vial : 10 Sample Multiplier: 1

Instrument :
 BNA_M
 ClientSampleId :
 DBSC9

Integration Parameters: LSCINT.P

Integrator: RTE
 Smoothing : OFF Filtering: 5
 Sampling : 1 Min Area: 0.1 % of largest Peak
 Start Thrs: 0.2 Max Peaks: 100
 Stop Thrs : 0 Peak Location: TOP

If leading or trailing edge < 100 prefer < Baseline drop else tangent >
 Peak separation: 5

Method : Z:\svoasrv\HPCHEM1\BNA_M\Methods\SFAM-EPA-BM031022.M
 Title : SVOA CALIBRATION

Signal : TIC: BM034221.D\data.ms

peak #	R.T. min	first scan	max scan	last scan	PK TY	peak height	corr. area	corr. % max.	% of total
1	3.325	11	15	25	rVB	47247	62941	1.90%	0.179%
2	3.743	82	86	103	rBV	491373	702879	21.24%	2.001%
3	4.090	142	145	152	rVB2	9531	14919	0.45%	0.042%
4	5.025	301	304	312	rVB3	8369	13244	0.40%	0.038%
5	7.101	649	657	668	rBV	561447	904295	27.33%	2.574%
6	7.272	680	686	696	rBV	473194	747705	22.59%	2.128%
7	7.348	697	699	704	rVB4	4433	6401	0.19%	0.018%
8	7.478	714	721	736	rVV	651048	1018670	30.78%	2.900%
9	7.589	738	740	745	rVB6	3547	3980	0.12%	0.011%
10	7.954	795	802	810	rBV	431544	697140	21.07%	1.984%
11	8.019	810	813	818	rVB6	4504	6350	0.19%	0.018%
12	8.654	915	921	936	rBV	761576	1202948	36.35%	3.424%
13	9.113	992	999	1009	rBV	574955	951989	28.77%	2.710%
14	9.572	1071	1077	1081	rBV2	18744	26588	0.80%	0.076%
15	9.836	1114	1122	1130	rBV	472591	806991	24.39%	2.297%
16	9.895	1130	1132	1135	rVB4	4303	4711	0.14%	0.013%
17	10.266	1188	1195	1199	rBV5	4242	8327	0.25%	0.024%
18	10.378	1207	1214	1230	rBV	785673	1330954	40.22%	3.789%
19	10.766	1272	1280	1289	rVB	582136	958387	28.96%	2.728%
20	10.895	1294	1302	1319	rBV	650160	1171258	35.39%	3.334%
21	12.195	1519	1523	1531	rVB3	12128	18138	0.55%	0.052%
22	12.354	1543	1550	1555	rBV3	10996	20566	0.62%	0.059%
23	13.095	1671	1676	1679	rBV6	2572	3501	0.11%	0.010%
24	13.148	1681	1685	1691	rBV3	3060	4811	0.15%	0.014%
25	13.430	1728	1733	1740	rVB2	15307	21072	0.64%	0.060%
26	13.571	1751	1757	1762	rVB5	3321	5989	0.18%	0.017%
27	13.995	1823	1829	1843	rBV	1342585	1900469	57.43%	5.410%
28	14.283	1871	1878	1889	rBV	1588496	2340437	70.72%	6.662%
29	14.495	1911	1914	1918	rVB5	3343	4390	0.13%	0.012%
30	14.589	1924	1930	1943	rBV	860211	1276683	38.58%	3.634%
31	14.771	1953	1961	1974	rBV	339334	607428	18.35%	1.729%
32	15.007	1998	2001	2004	rVB5	3909	4150	0.13%	0.012%
33	15.218	2033	2037	2042	rVB5	2468	4305	0.13%	0.012%
34	15.583	2091	2099	2110	rBV	2001977	2856852	86.33%	8.132%
35	15.689	2111	2117	2131	rVV	501169	718287	21.70%	2.045%
36	15.818	2135	2139	2145	rVB5	10139	16257	0.49%	0.046%

Data Path : Z:\svoasrv\HPCHEM1\BNA_M\Data\BM031122\
 Data File : BM034221.D
 Acq On : 11 Mar 2022 14:22
 Operator : CG/JU
 Sample : N1816-02
 Misc :
 ALS Vial : 10 Sample Multiplier: 1

Instrument :
 BNA_M
 ClientSampleId :
 DBSC9

Integration Parameters: LSCINT.P

Integrator: RTE
 Smoothing : OFF Filtering: 5
 Sampling : 1 Min Area: 0.1 % of largest Peak
 Start Thrs: 0.2 Max Peaks: 100
 Stop Thrs : 0 Peak Location: TOP

If leading or trailing edge < 100 prefer < Baseline drop else tangent >
 Peak separation: 5

Method : Z:\svoasrv\HPCHEM1\BNA_M\Methods\SFAM-EPA-BM031022.M
 Title : SVOA CALIBRATION

37	16.654	2276	2281	2286	rBV7	1767	3754	0.11%	0.011%
38	17.101	2351	2357	2358	rBV5	2307	3491	0.11%	0.010%
39	17.124	2358	2361	2368	rVV4	3420	6778	0.20%	0.019%
40	17.330	2390	2396	2407	rBV	981699	1383489	41.81%	3.938%
41	17.430	2407	2413	2423	rVV	2030531	2845786	85.99%	8.101%
42	17.518	2426	2428	2435	rVB6	16869	25798	0.78%	0.073%
43	18.012	2507	2512	2518	rBV8	4443	9106	0.28%	0.026%
44	18.224	2543	2548	2561	rBV2	142167	222583	6.73%	0.634%
45	18.895	2660	2662	2666	rVB4	4580	4242	0.13%	0.012%
46	19.289	2724	2729	2735	rBV4	25532	46112	1.39%	0.131%
47	19.353	2736	2740	2743	rBV2	38637	52438	1.58%	0.149%
48	19.500	2761	2765	2771	rBV7	29401	46717	1.41%	0.133%
49	19.718	2796	2802	2808	rBV	2480404	3309336	100.00%	9.420%
50	20.224	2886	2888	2892	rBV4	13767	19991	0.60%	0.057%
51	21.212	3052	3056	3065	rBV	404789	538576	16.27%	1.533%
52	21.500	3100	3105	3119	rBV	887078	1442300	43.58%	4.106%
53	23.765	3483	3490	3498	rBV2	1426730	3021937	91.32%	8.602%
54	23.918	3510	3516	3538	rVB	728287	1703597	51.48%	4.849%

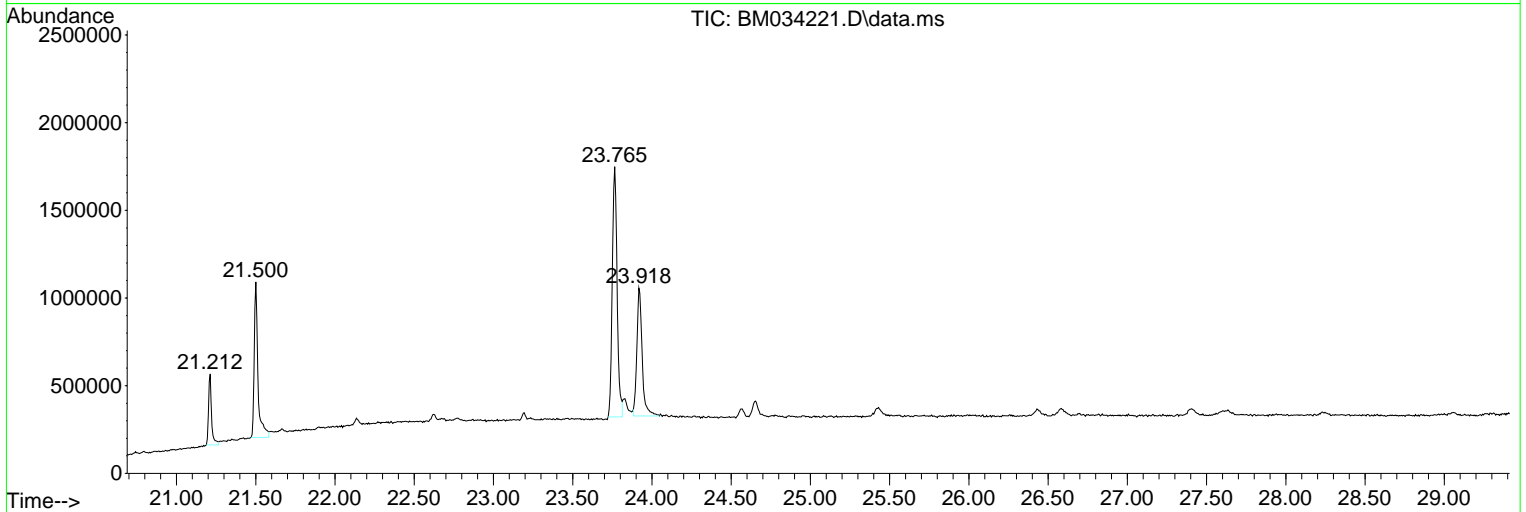
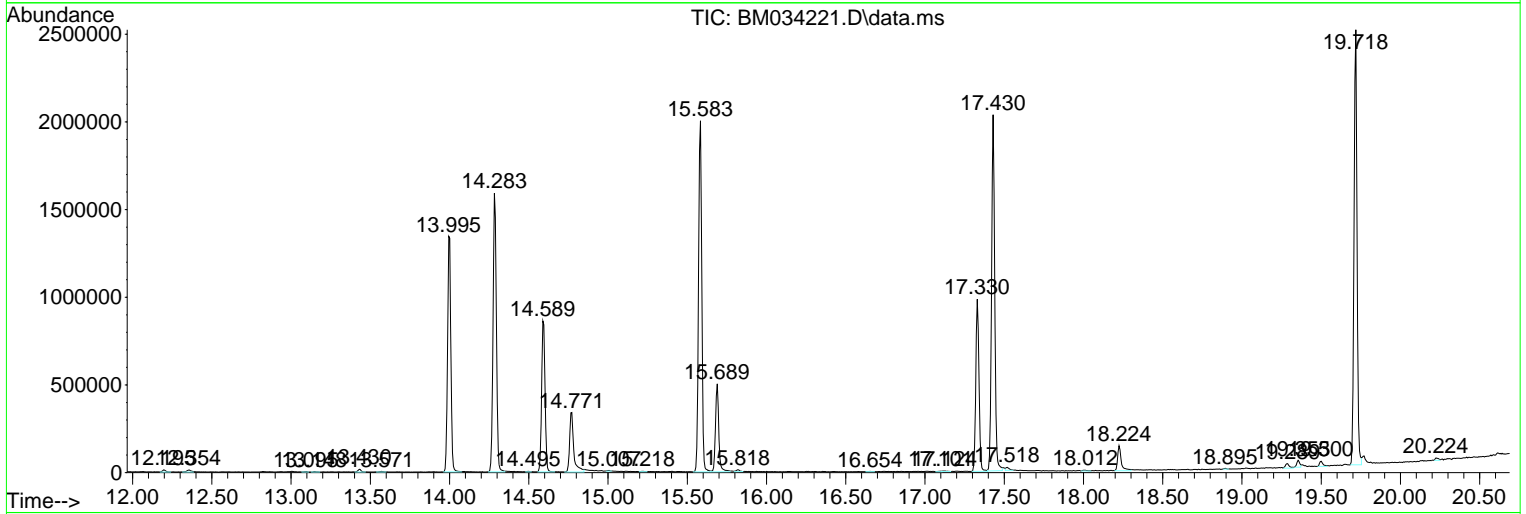
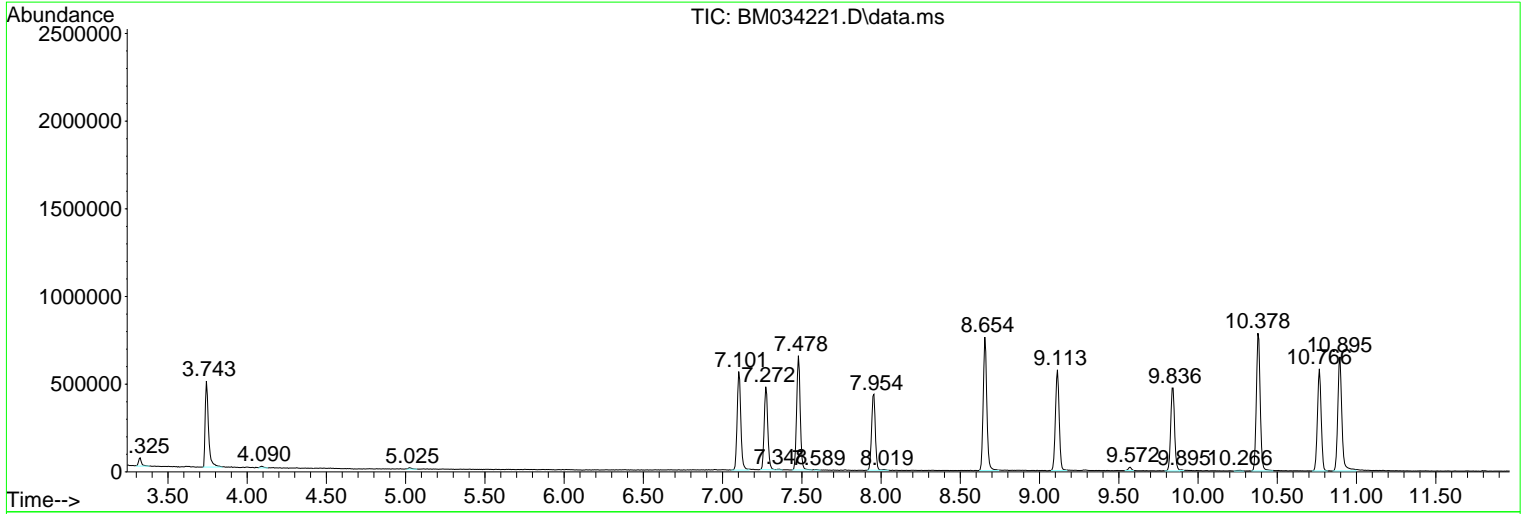
Sum of corrected areas: 35130043

Data Path : Z:\svoasrv\HPCHEM1\BNA_M\Data\BM031122\
 Data File : BM034221.D
 Acq On : 11 Mar 2022 14:22
 Operator : CG/JU
 Sample : N1816-02
 Misc :
 ALS Vial : 10 Sample Multiplier: 1

Instrument :
 BNA_M
 ClientSampleId :
 DBSC9

Quant Method : Z:\svoasrv\HPCHEM1\BNA_M\Methods\SFAM-EPA-BM031022.M
 Quant Title : SVOA CALIBRATION

TIC Library : C:\Database\NIST20.L
 TIC Integration Parameters: LSCINT.P



Data Path : Z:\svoasrv\HPCHEM1\BNA_M\Data\BM031122\
 Data File : BM034221.D
 Acq On : 11 Mar 2022 14:22
 Operator : CG/JU
 Sample : N1816-02
 Misc :
 ALS Vial : 10 Sample Multiplier: 1

Instrument :
 BNA_M
 ClientSampleId :
 DBSC9

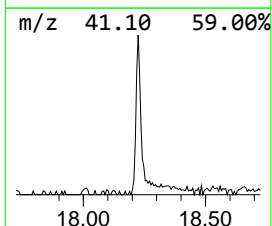
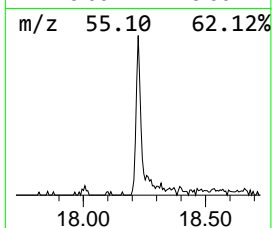
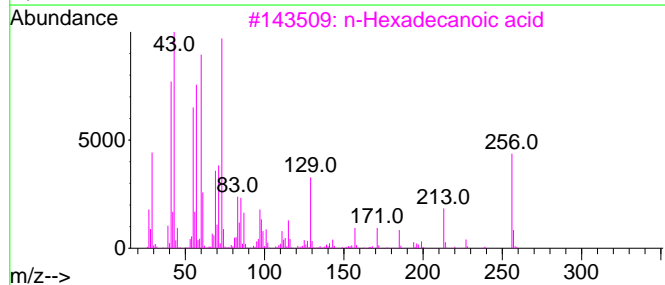
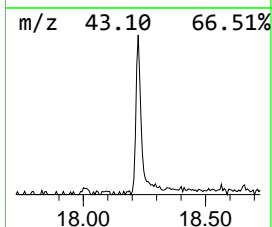
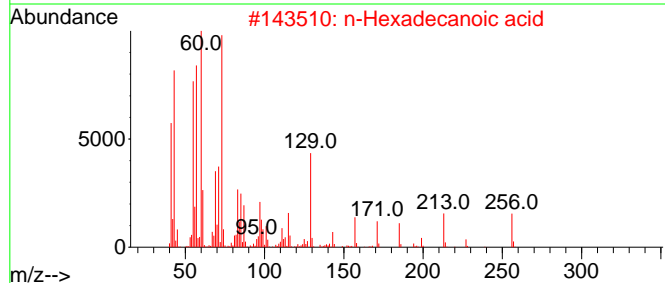
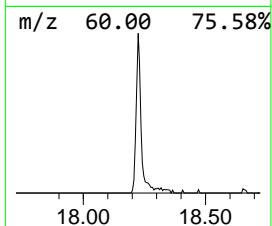
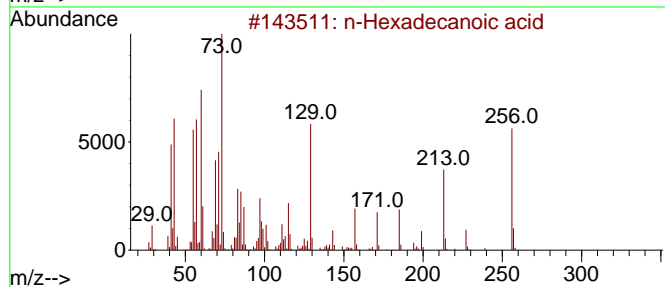
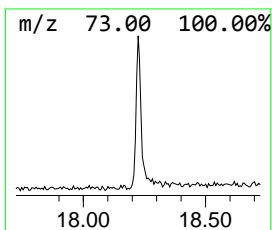
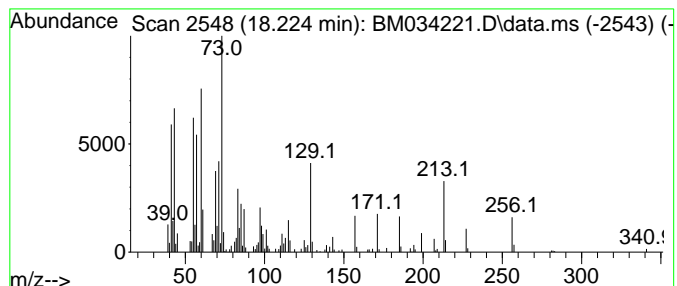
Quant Method : Z:\svoasrv\HPCHEM1\BNA_M\Methods\SFAM-EPA-BM031022.M
 Quant Title : SVOA CALIBRATION

TIC Library : C:\Database\NIST20.L
 TIC Integration Parameters: LSCINT.P

 Peak Number 1 n-Hexadecanoic acid Concentration Rank 2

R.T.	EstConc	Area	Relative to ISTD	R.T.
18.224	3.22 ng/ul	222583	Phenanthrene-d10	17.330

Hit#	of 5	Tentative ID	MW	MolForm	CAS#	Qual
1		n-Hexadecanoic acid	256	C16H32O2	000057-10-3	98
2		n-Hexadecanoic acid	256	C16H32O2	000057-10-3	98
3		n-Hexadecanoic acid	256	C16H32O2	000057-10-3	96
4		n-Hexadecanoic acid	256	C16H32O2	000057-10-3	95
5		Tetradecanoic acid	228	C14H28O2	000544-63-8	91



Data Path : Z:\svoasrv\HPCHEM1\BNA_M\Data\BM031122\
 Data File : BM034221.D
 Acq On : 11 Mar 2022 14:22
 Operator : CG/JU
 Sample : N1816-02
 Misc :
 ALS Vial : 10 Sample Multiplier: 1

Instrument :
 BNA_M
 ClientSampleId :
 DBSC9

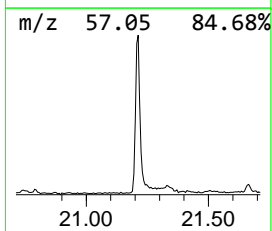
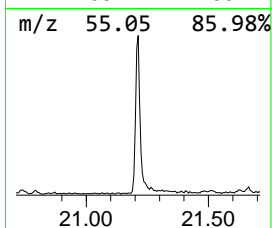
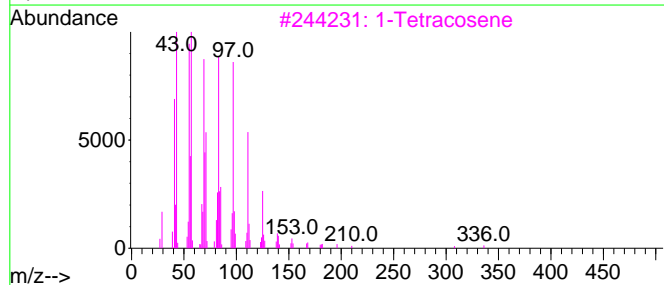
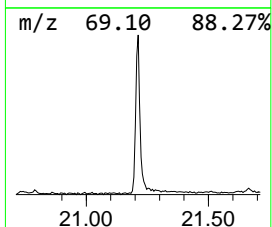
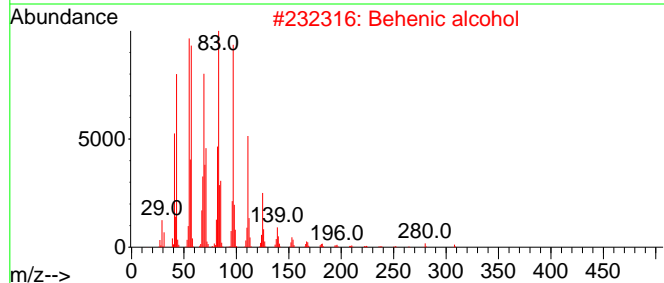
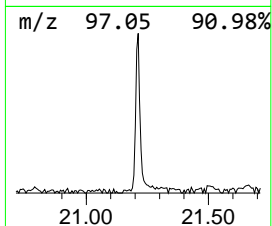
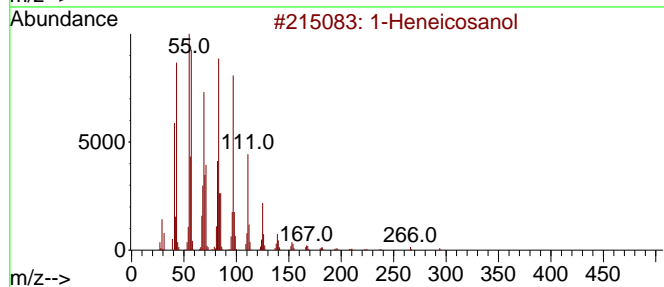
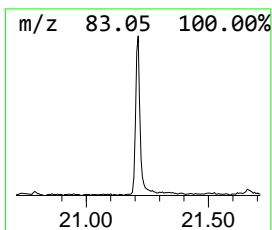
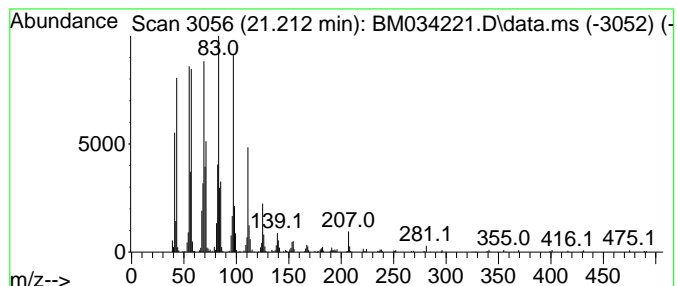
Quant Method : Z:\svoasrv\HPCHEM1\BNA_M\Methods\SFAM-EPA-BM031022.M
 Quant Title : SVOA CALIBRATION

TIC Library : C:\Database\NIST20.L
 TIC Integration Parameters: LSCINT.P

 Peak Number 2 1-Heneicosanol Concentration Rank 1

R.T.	EstConc	Area	Relative to ISTD	R.T.
21.212	7.47 ng/ul	538576	Chrysene-d12	21.500

Hit#	of 5	Tentative ID	MW	MolForm	CAS#	Qual
1		1-Heneicosanol	312	C21H44O	015594-90-8	95
2		Behenic alcohol	326	C22H46O	000661-19-8	95
3		1-Tetracosene	336	C24H48	010192-32-2	94
4		n-Nonadecanol-1	284	C19H40O	001454-84-8	94
5		1-Hexacosene	364	C26H52	018835-33-1	93



Data Path : Z:\svoasrv\HPCHEM1\BNA_M\Data\BM031122\
Data File : BM034221.D
Acq On : 11 Mar 2022 14:22
Operator : CG/JU
Sample : N1816-02
Misc :
ALS Vial : 10 Sample Multiplier: 1

Instrument :
BNA_M
ClientSampleId :
DBSC9

Quant Method : Z:\svoasrv\HPCHEM1\BNA_M\Methods\SFAM-EPA-BM031022.M
Quant Title : SVOA CALIBRATION

TIC Library : C:\Database\NIST0.L
TIC Integration Parameters: LSCINT.P

TIC Top Hit name	RT	EstConc	Units	Response	--Internal Standard--			
					#	RT	Resp	Conc
n-Hexadecanoic ...	18.224	3.2	ng/u1	222583	4	17.330	1383490	20.0
1-Heneicosanol	21.212	7.5	ng/u1	538576	5	21.500	1442300	20.0