

Data Path : Z:\SVOASRV\HPCHEM1\BNA M\DATA\BM031219\
 Data File : BM019119.D
 Acq On : 12 Mar 2019 19:31
 Operator : JU/SJ
 Sample : K1842-10
 Misc :
 ALS Vial : 14 Sample Multiplier: 1

Instrument :
 BNA_M
 ClientSampleId :
 PR-MW-03_030819

Integration Parameters: rteint.p
 Integrator: RTE
 Smoothing : ON Filtering: 5
 Sampling : 1 Min Area: 3 % of largest Peak
 Start Thrs: 0.2 Max Peaks: 100
 Stop Thrs : 0 Peak Location: TOP

If leading or trailing edge < 100 prefer < Baseline drop else tangent >
 Peak separation: 5

Method : Z:\SVOASRV\HPCHEM1\BNA M\METHODS\8270-BM031119.M
 Title : ASP BNA STANDARDS FOR 5 POINT CALIBRATION

Signal : TIC

peak #	R.T. min	first scan	max scan	last scan	PK TY	peak height	corr. area	corr. % max.	% of total
1	5.264	363	370	387	rBV	2430257	3657293	17.25%	4.061%
2	6.840	631	638	652	rBV	1622330	2570409	12.12%	2.854%
3	7.199	691	699	719	rBV	4793332	7497311	35.36%	8.324%
4	7.663	771	778	788	rBV	910766	1440127	6.79%	1.599%
5	7.981	824	832	843	rBV	3748700	6056548	28.57%	6.724%
6	8.834	969	977	997	rBV	3283784	5546657	26.16%	6.158%
7	10.451	1244	1252	1267	rBV	1140301	2062343	9.73%	2.290%
8	12.934	1666	1674	1695	rBV	9460140	14005426	66.06%	15.550%
9	14.316	1902	1909	1925	rBV2	1946660	3090696	14.58%	3.432%
10	15.816	2157	2164	2182	rBV	8524477	11974339	56.48%	13.295%
11	17.069	2371	2377	2394	rBV2	2448117	3739715	17.64%	4.152%
12	19.710	2820	2826	2839	rBV	17065783	21200929	100.00%	23.539%
13	21.268	3086	3091	3103	rBV	3026677	3897428	18.38%	4.327%
14	22.798	3348	3351	3356	rVB2	165062	212370	1.00%	0.236%
15	23.504	3465	3471	3483	rVB2	1618537	3116555	14.70%	3.460%

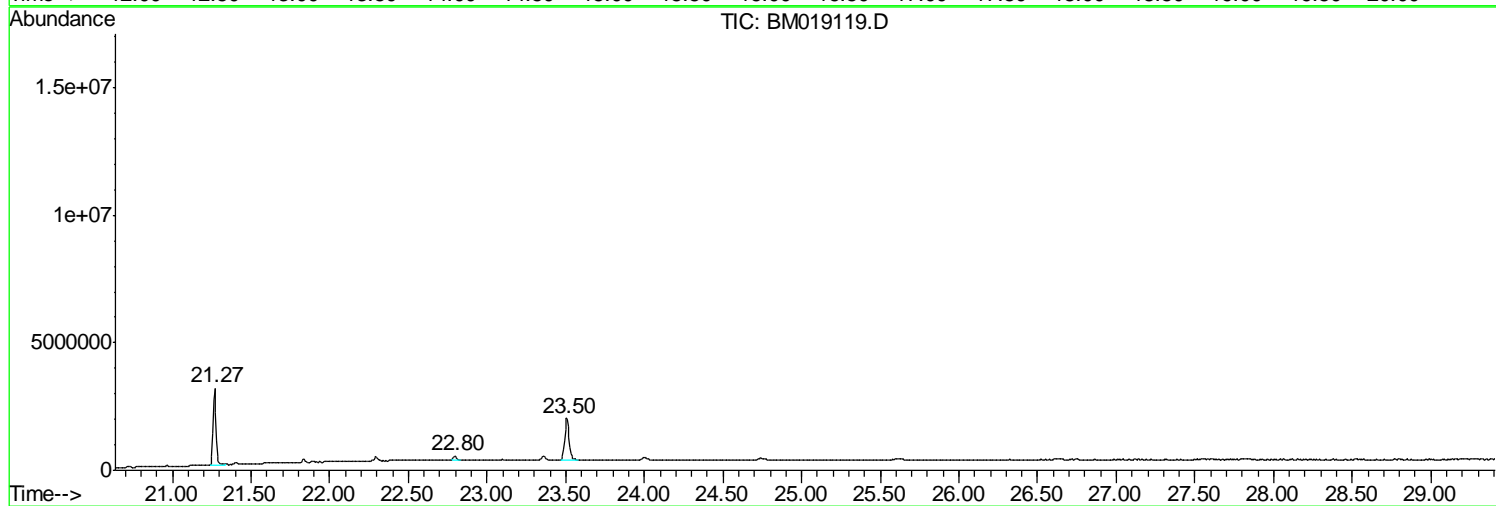
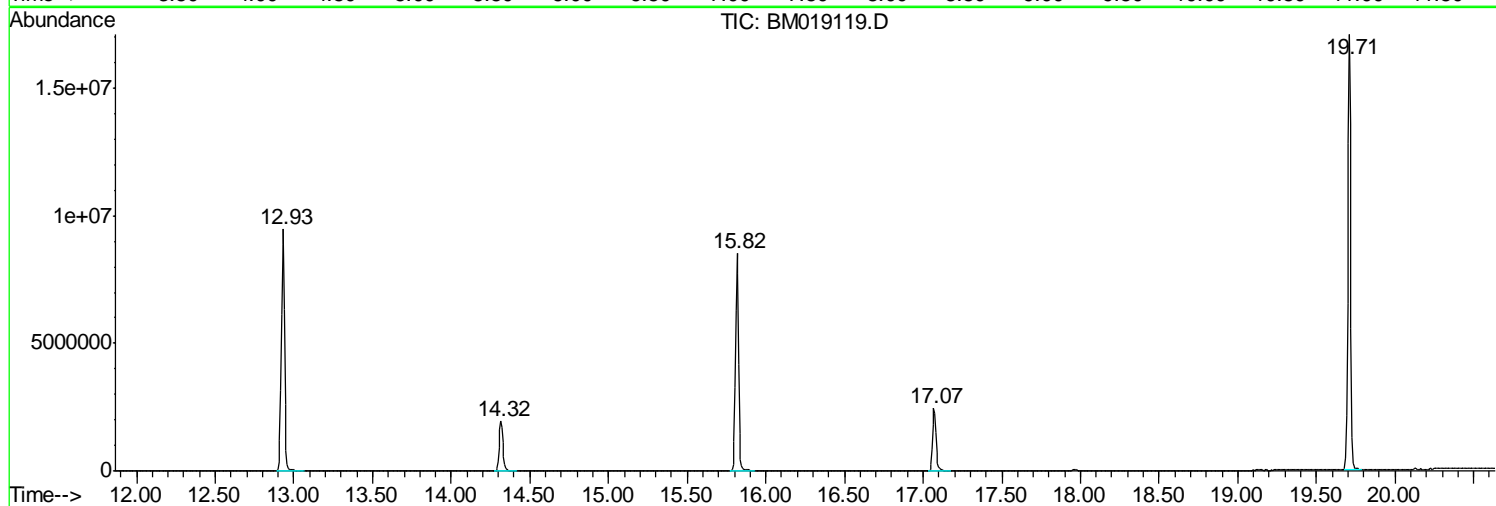
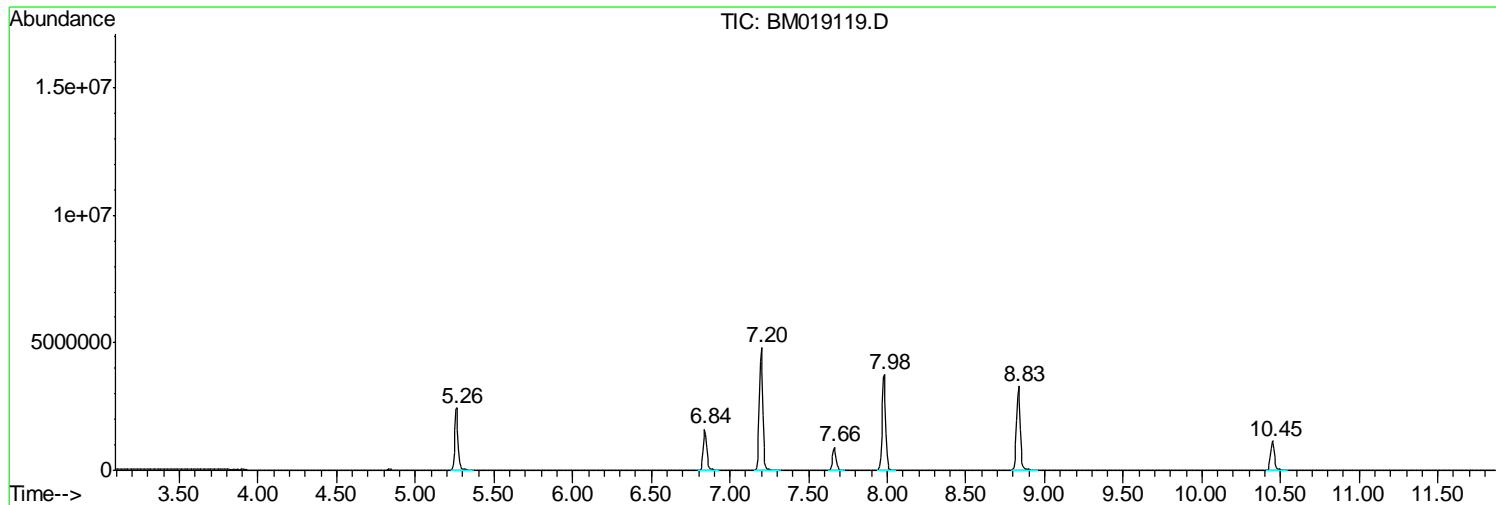
Sum of corrected areas: 90068146

Data Path : Z:\SVOASRV\HPCHEM1\BNA M\DATA\BM031219\
Data File : BM019119.D
Acq On : 12 Mar 2019 19:31
Operator : JU/SJ
Sample : K1842-10
Misc :
ALS Vial : 14 Sample Multiplier: 1

Instrument :
BNA_M
ClientSampleId :
PR-MW-03_030819

Quant Method : Z:\SVOASRV\HPCHEM1\BNA M\METHODS\8270-BM031119.M
Quant Title : ASP BNA STANDARDS FOR 5 POINT CALIBRATION

TIC Library : C:\DATABASE\NIST02.L
TIC Integration Parameters: LSCINT.P



Data Path : Z:\SVOASRV\HPCHEM1\BNA M\DATA\BM031219\
 Data File : BM019119.D
 Acq On : 12 Mar 2019 19:31
 Operator : JU/SJ
 Sample : K1842-10
 Misc :
 ALS Vial : 14 Sample Multiplier: 1

Instrument :
 BNA_M
 ClientSampleId :
 PR-MW-03_030819

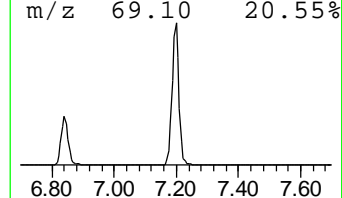
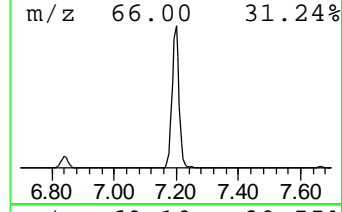
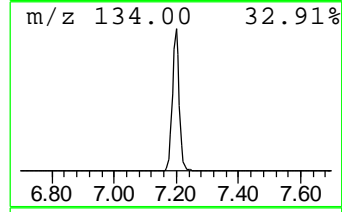
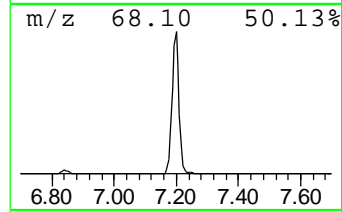
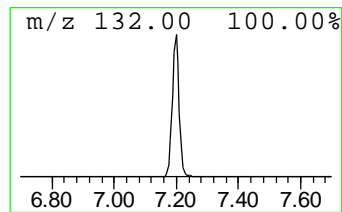
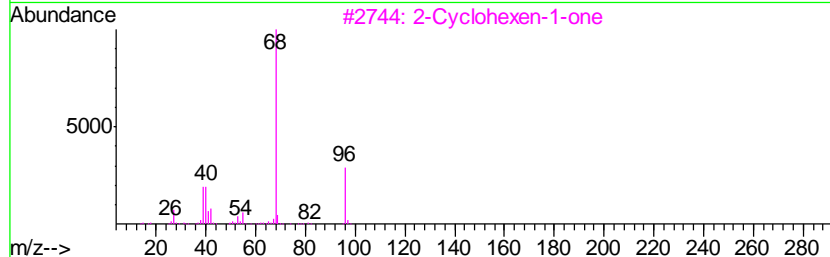
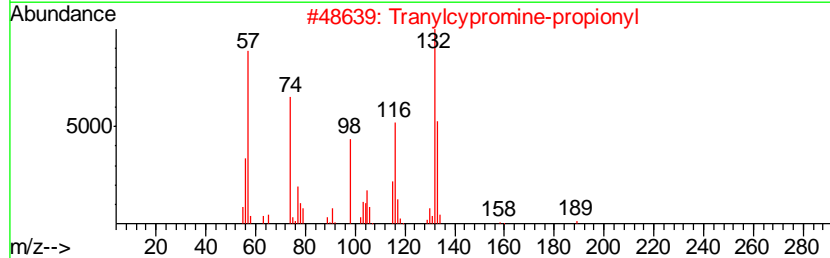
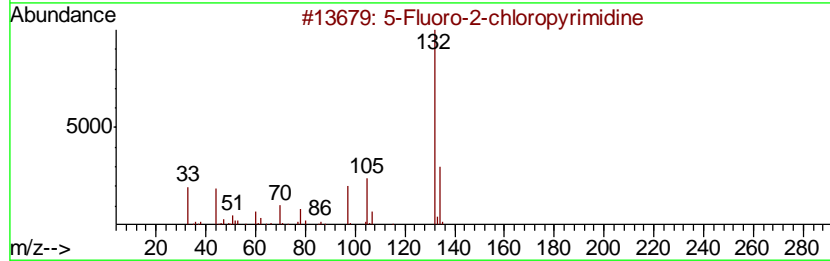
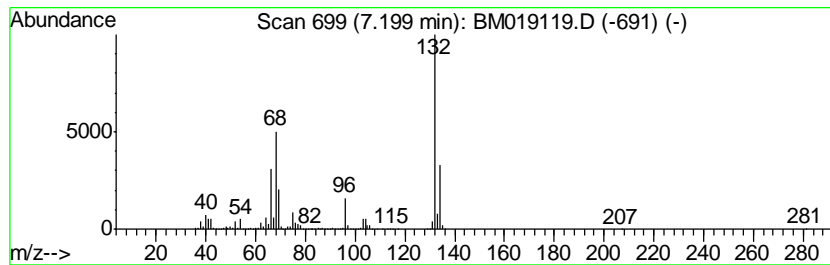
Quant Method : Z:\SVOASRV\HPCHEM1\BNA M\METHODS\8270-BM031119.M
 Quant Title : ASP BNA STANDARDS FOR 5 POINT CALIBRATION

TIC Library : C:\DATABASE\NIST02.L
 TIC Integration Parameters: LSCINT.P

 Peak Number 1 unknown7.20 Concentration Rank 1

R.T.	EstConc	Area	Relative to ISTD	R.T.
7.20	104.12 ng	7497310	1,4-Dichlorobenzene-d4	7.66

Hit#	of	Tentative ID	MW	MolForm	CAS#	Qual
1	5	5-Fluoro-2-chloropyrimidine	132	C4H2ClFN2	062802-42-0	12
2		Tranlycypromine-propionyl	189	C12H15NO	1000123-86-3	12
3		2-Cyclohexen-1-one	96	C6H8O	000930-68-7	11
4		(5-METHYL-2-PYRIDYL)ACETONITRILE	132	C8H8N2	1000241-93-9	10
5		Xenon	132	Xe	007440-63-3	9



Data Path : Z:\SVOASRV\HPCHEM1\BNA_M\DATA\BM031219\
Data File : BM019119.D
Acq On : 12 Mar 2019 19:31
Operator : JU/SJ
Sample : K1842-10
Misc :
ALS Vial : 14 Sample Multiplier: 1

Instrument :
BNA_M
ClientSampleId :
PR-MW-03_030819

Quant Method : Z:\SVOASRV\HPCHEM1\BNA_M\METHODS\8270-BM031119.M
Quant Title : ASP BNA STANDARDS FOR 5 POINT CALIBRATION

TIC Library : C:\DATABASE\NIST02.L
TIC Integration Parameters: LSCINT.P

TIC Top Hit name	RT	EstConc	Units	Response	--Internal Standard--			
					#	RT	Resp	Conc
unknown7.20	7.20	104.1	ng	7497310	1	7.66	1440130	20.0