

Data Path : Z:\HPCHEM1\BNA M\DATA\BM031717\
 Data File : BM009285.D
 Acq On : 17 Mar 2017 21:48
 Operator : SJ/MA
 Sample : I2285-07
 Misc :
 ALS Vial : 20 Sample Multiplier: 1

Instrument :
 BNA_M
 ClientSampleId :

Quant Time: Mar 18 00:41:51 2017
 Quant Method : Z:\HPCHEM1\BNA M\METHODS\SOM-EPA-BM031717-PAH.M
 Quant Title : SVOA CALIBRATION
 QLast Update : Sat Mar 18 00:39:50 2017
 Response via : Initial Calibration

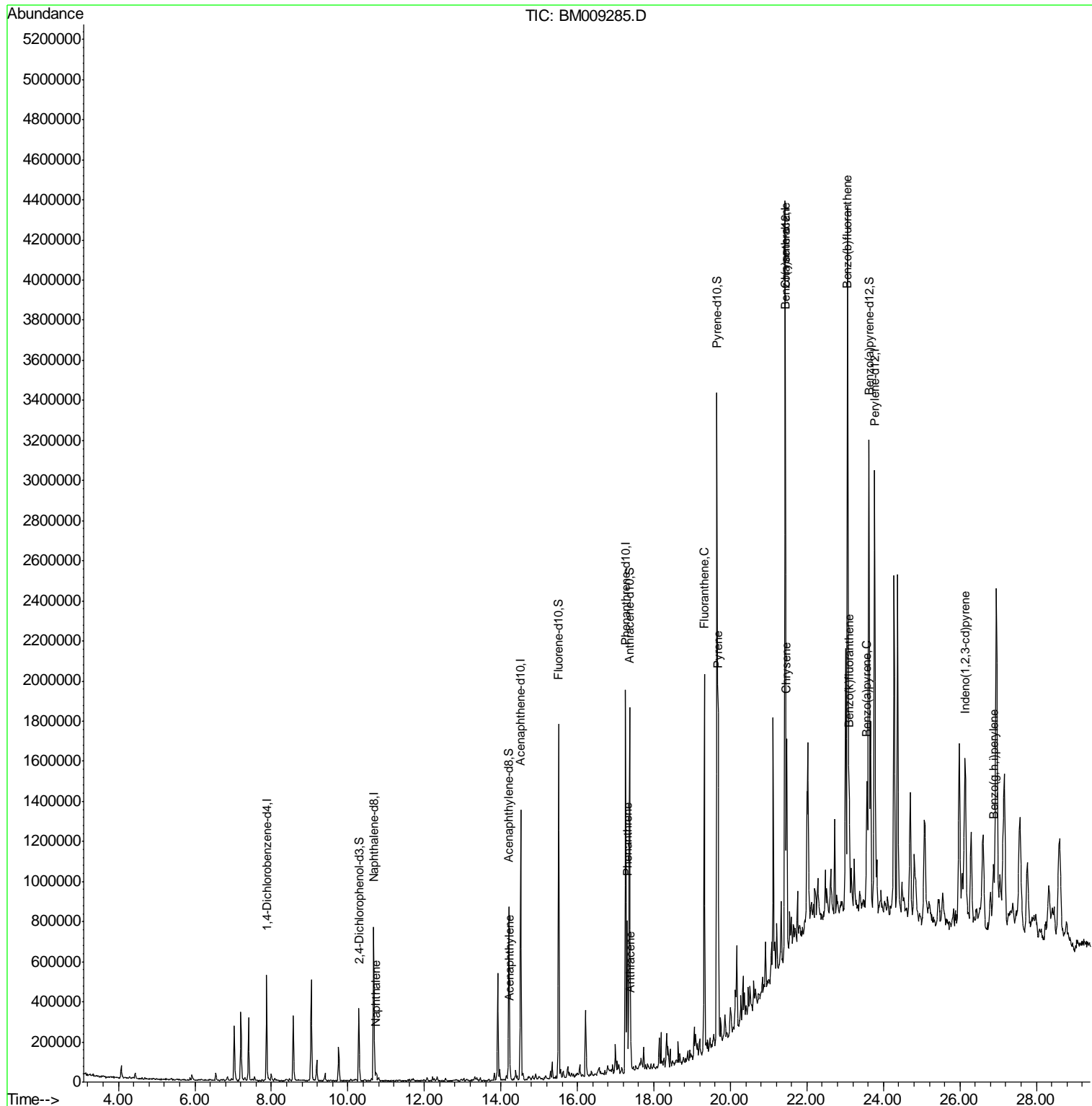
Internal Standards	R.T.	QIon	Response	Conc	Units	Dev(Min)
1) 1,4-Dichlorobenzene-d4	7.87	152	122817	20.00	ng/ul	0.00
2) Naphthalene-d8	10.67	136	562765	20.00	ng/ul	0.00
6) Acenaphthene-d10	14.52	164	394573	20.00	ng/ul	0.00
12) Phenanthrene-d10	17.26	188	1046394	20.00	ng/ul	0.00
18) Chrysene-d12	21.43	240	1586593	20.00	ng/ul	0.00
23) Perylene-d12	23.77	264	1646467	20.00	ng/ul	0.00
System Monitoring Compounds						
3) 2,4-Dichlorophenol-d3	10.29	165	112515	12.32	ng/uL	0.00
7) Acenaphthylene-d8	14.21	160	560726	16.76	ng/ul	0.00
10) Fluorene-d10	15.51	176	629375	21.46	ng/ul	0.00
15) Anthracene-d10	17.36	188	847153	17.04	ng/ul	0.00
19) Pyrene-d10	19.65	212	1406272	22.11	ng/ul	0.00
26) Benzo(a)pyrene-d12	23.62	264	1538530	20.55	ng/ul	0.00
Target Compounds						
4) Naphthalene	10.72	128	28857	1.01	ng/ul	98
8) Acenaphthylene	14.23	152	42437	1.25	ng/ul#	89
14) Phenanthrene	17.30	178	397856	6.75	ng/ul	95
16) Anthracene	17.39	178	81927	1.34	ng/ul	96
17) Fluoranthene	19.32	202	1056095	14.14	ng/ul#	95
20) Pyrene	19.68	202	931092	11.37	ng/ul#	94
21) Benzo(a)anthracene	21.42	228	643349	7.12	ng/ul	99
22) Chrysene	21.47	228	628953	7.37	ng/ul	94
24) Benzo(b)fluoranthene	23.06	252	986156	10.18	ng/ul#	93
25) Benzo(k)fluoranthene	23.10	252	338450	3.70	ng/ul	98
27) Benzo(a)pyrene	23.57	252	483739	5.19	ng/ul	99
28) Indeno(1,2,3-cd)pyrene	26.14	276	430846	3.89	ng/ul	95
30) Benzo(a,h,i)perylene	26.87	276	380153	4.13	ng/ul#	93

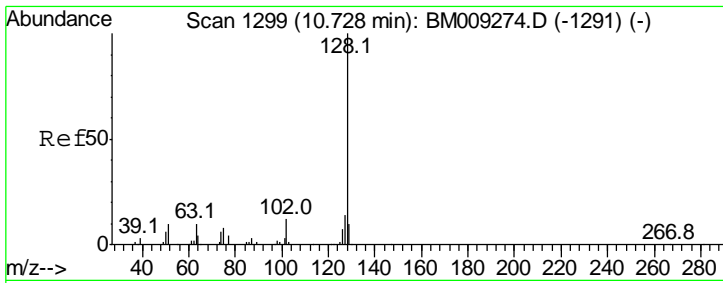
(#) = qualifier out of range (m) = manual integration (+) = signals summed

Data Path : Z:\HPCHEM1\BNA M\DATA\BM031717\
 Data File : BM009285.D
 Acq On : 17 Mar 2017 21:48
 Operator : SJ/MA
 Sample : I2285-07
 Misc :
 ALS Vial : 20 Sample Multiplier: 1

Instrument :
 BNA_M
 ClientSampled :

Quant Time: Mar 18 00:41:51 2017
 Quant Method : Z:\HPCHEM1\BNA M\METHODS\SOM-EPA-BM031717-PAH.M
 Quant Title : SVOA CALIBRATION
 QLast Update : Sat Mar 18 00:39:50 2017
 Response via : Initial Calibration

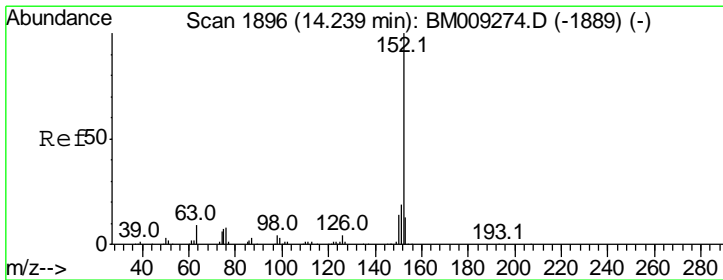
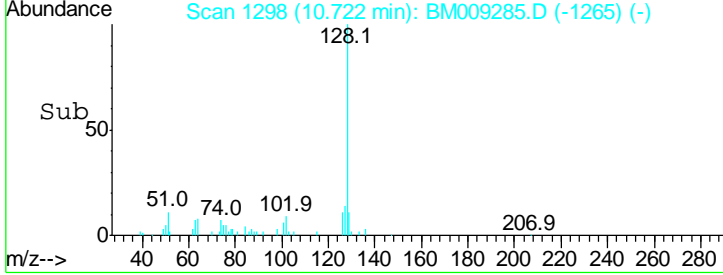
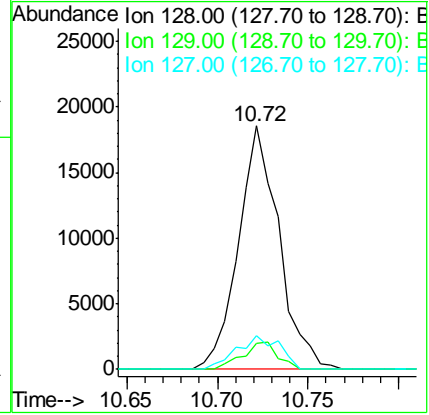
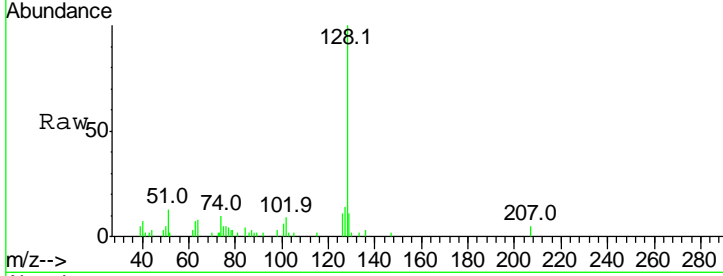




#4
 Naphthalene
 Concen: 1.01 ng/ul
 RT: 10.72 min Scan# 1298
 Delta R.T. -0.01 min
 Lab File: BM009285.D
 Acq: 17 Mar 2017 21:48

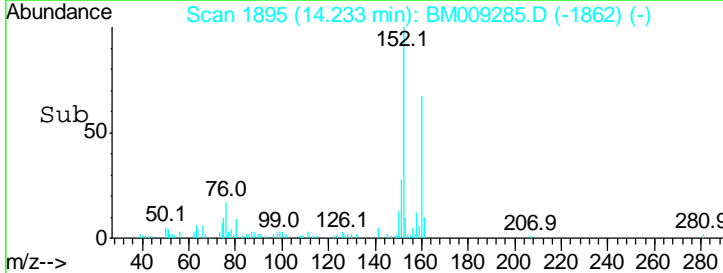
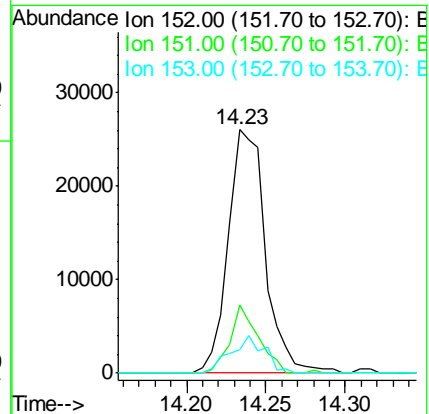
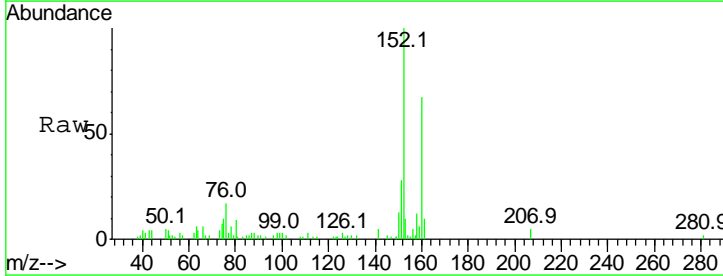
Instrument :
 BNA_M
 ClientSampled :

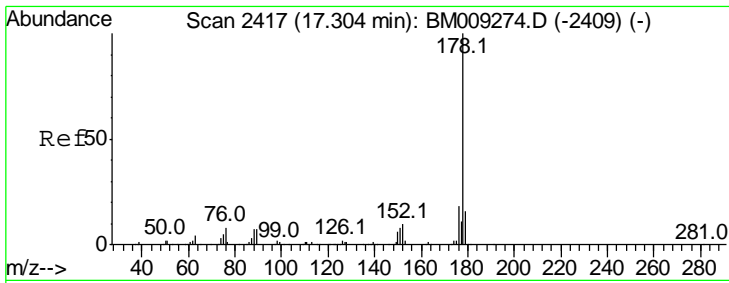
Tgt Ion	Resp	Lower	Upper
128	100		
129	10.6	9.1	13.7
127	13.8	10.6	15.8



#8
 Acenaphthylene
 Concen: 1.25 ng/ul
 RT: 14.23 min Scan# 1895
 Delta R.T. -0.01 min
 Lab File: BM009285.D
 Acq: 17 Mar 2017 21:48

Tgt Ion	Resp	Lower	Upper
152	100		
151	27.8	17.5	26.3#
153	9.8	10.6	16.0#

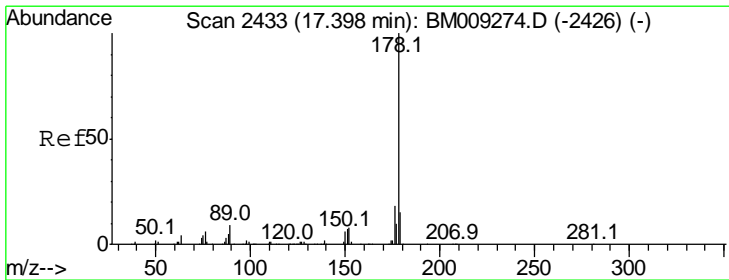
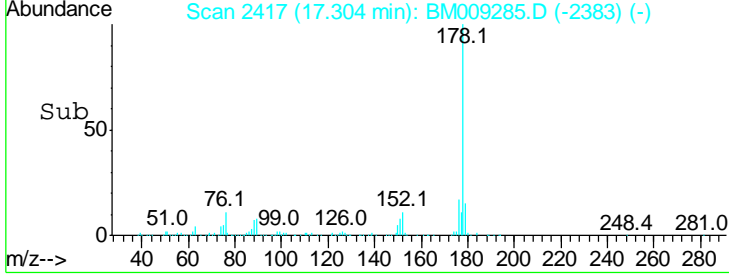
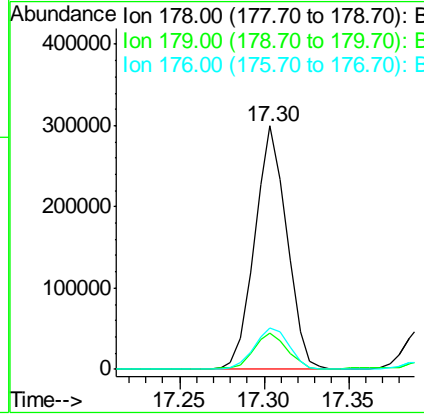
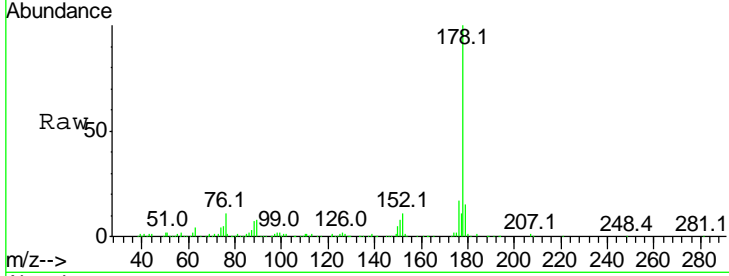




#14
 Phenanthrene
 Concen: 6.75 ng/ul
 RT: 17.30 min Scan# 2417
 Delta R.T. -0.00 min
 Lab File: BM009285.D
 Acq: 17 Mar 2017 21:48

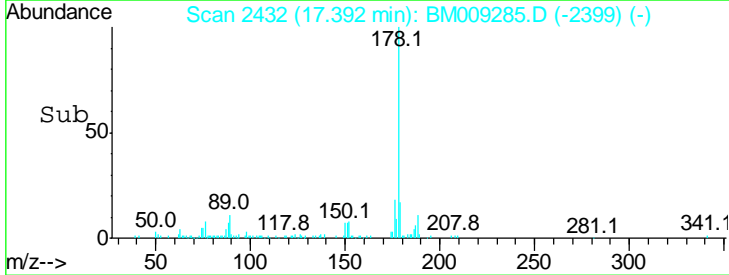
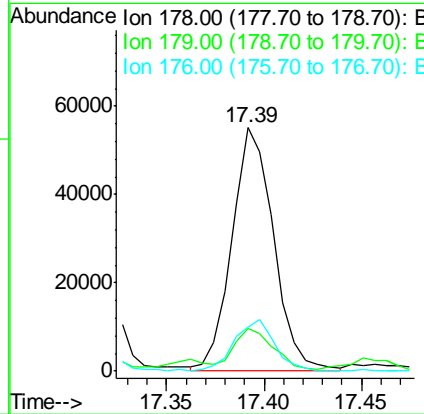
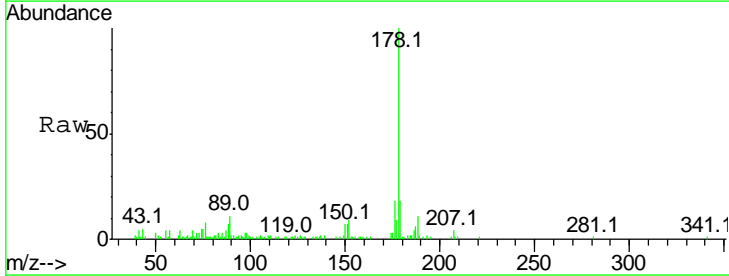
Instrument :
 BNA_M
 ClientSampled :

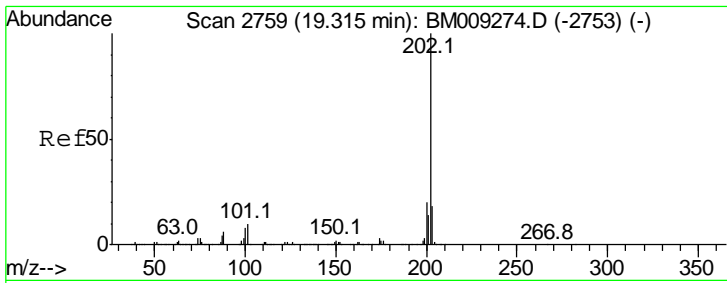
Tgt Ion	Resp	Lower	Upper
178	397856		
179	14.8	12.2	18.4
176	17.1	16.4	24.6



#16
 Anthracene
 Concen: 1.34 ng/ul
 RT: 17.39 min Scan# 2432
 Delta R.T. -0.01 min
 Lab File: BM009285.D
 Acq: 17 Mar 2017 21:48

Tgt Ion	Resp	Lower	Upper
178	81927		
179	17.5	12.7	19.1
176	18.0	15.8	23.8

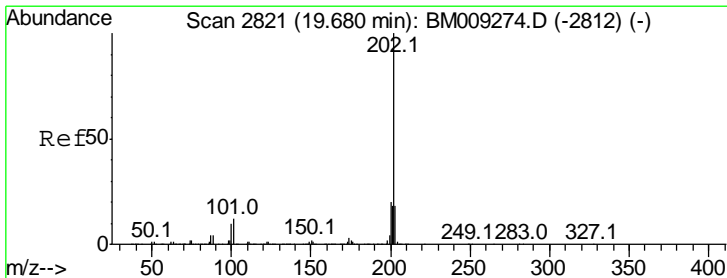
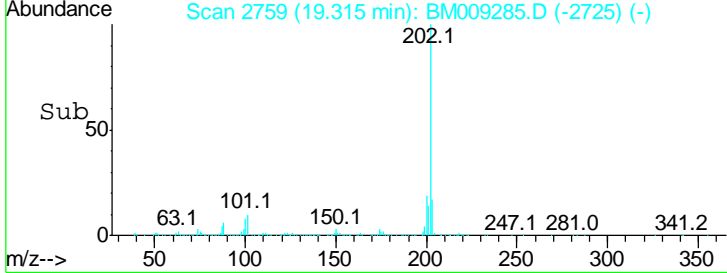
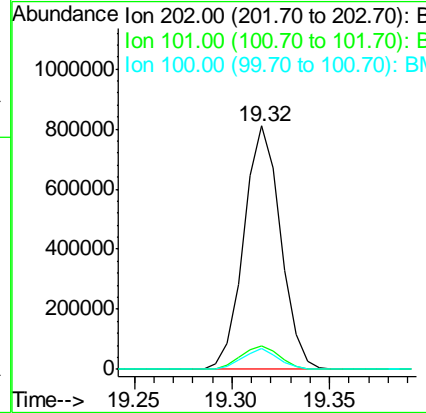
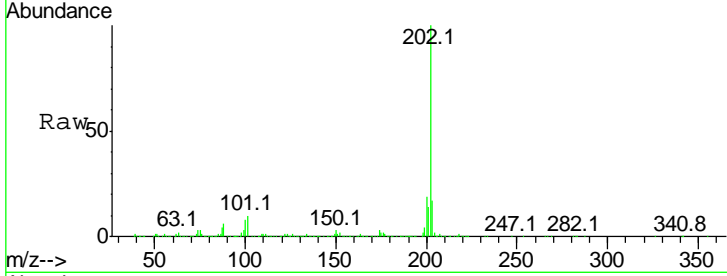




#17
 Fluoranthene
 Concen: 14.14 ng/ul
 RT: 19.32 min Scan# 2759
 Delta R.T. -0.00 min
 Lab File: BM009285.D
 Acq: 17 Mar 2017 21:48

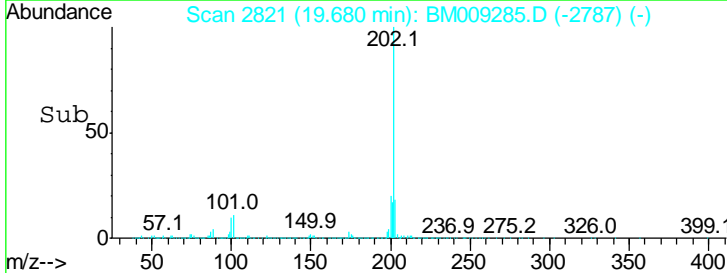
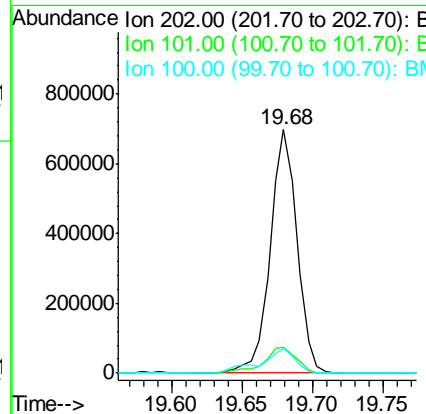
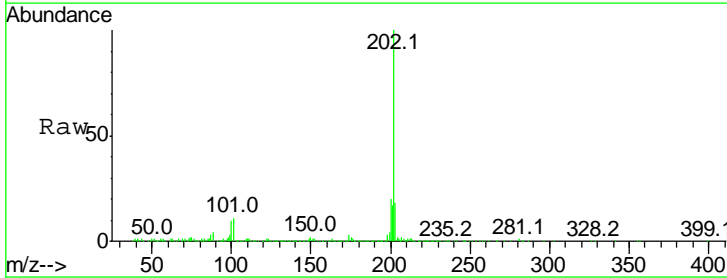
Instrument :
 BNA_M
 ClientSampled :

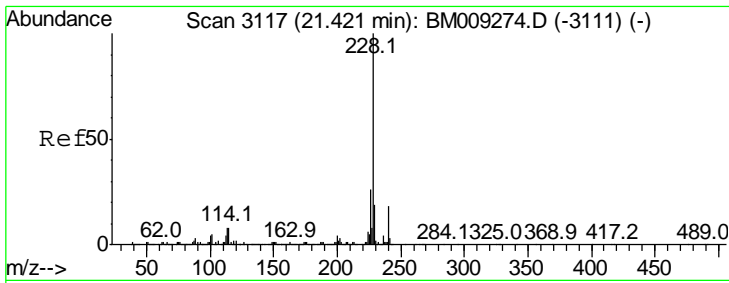
Tgt Ion	Resp	Lower	Upper
202	1056095		
101	9.8	9.8	14.8#
100	8.5	7.5	11.3



#20
 Pyrene
 Concen: 11.37 ng/ul
 RT: 19.68 min Scan# 2821
 Delta R.T. -0.00 min
 Lab File: BM009285.D
 Acq: 17 Mar 2017 21:48

Tgt Ion	Resp	Lower	Upper
202	931092		
101	10.8	11.2	16.8#
100	10.4	9.8	14.6

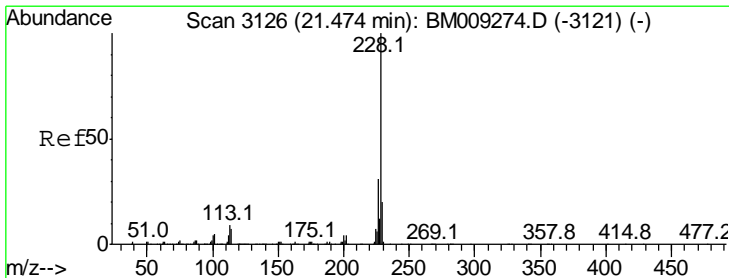
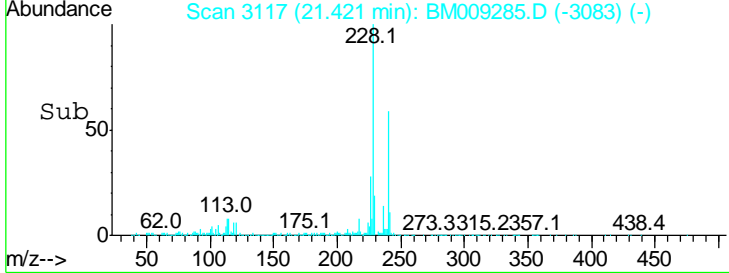
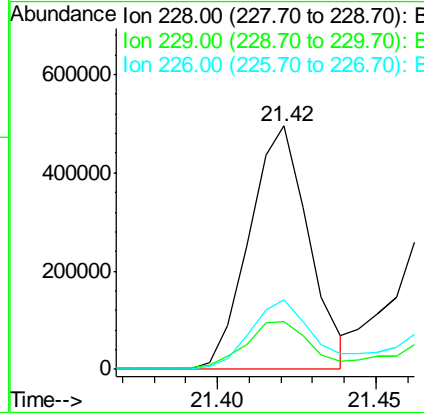
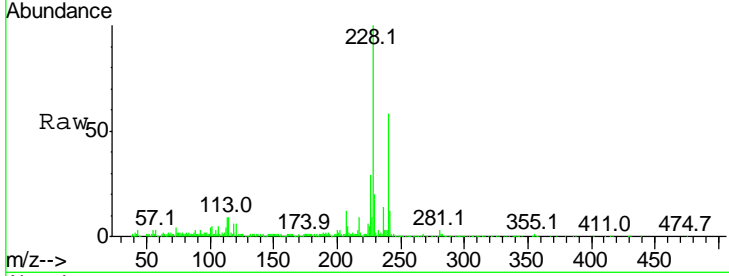




#21
 Benzo(a)anthracene
 Concen: 7.12 ng/ul
 RT: 21.42 min Scan# 3117
 Delta R.T. -0.00 min
 Lab File: BM009285.D
 Acq: 17 Mar 2017 21:48

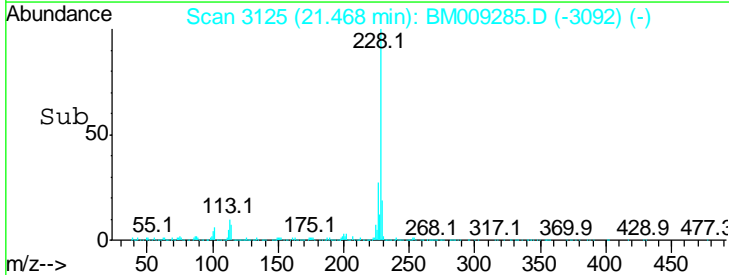
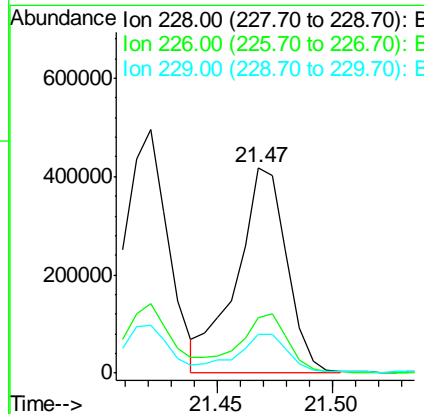
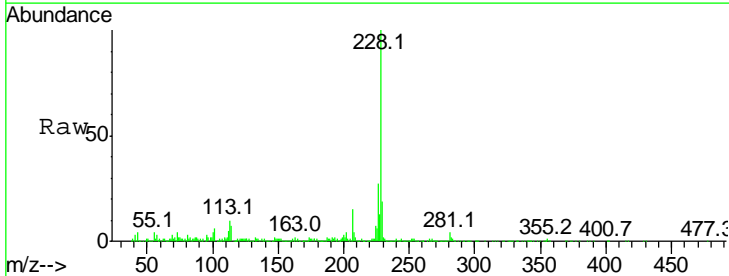
Instrument :
 BNA_M
 ClientSampled :

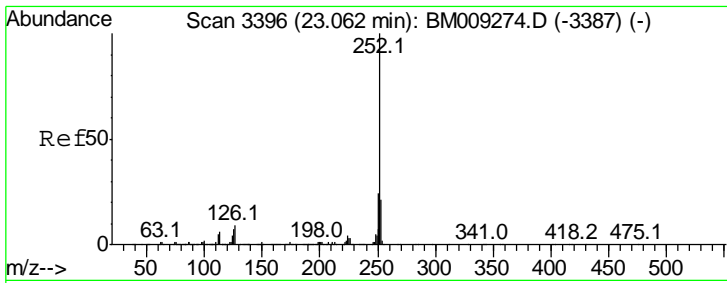
Tgt Ion	Resp	Lower	Upper
228	100		
229	19.6	15.9	23.9
226	28.5	22.1	33.1



#22
 Chrysene
 Concen: 7.37 ng/ul
 RT: 21.47 min Scan# 3125
 Delta R.T. -0.01 min
 Lab File: BM009285.D
 Acq: 17 Mar 2017 21:48

Tgt Ion	Resp	Lower	Upper
228	100		
226	27.3	25.0	37.6
229	19.0	16.6	25.0

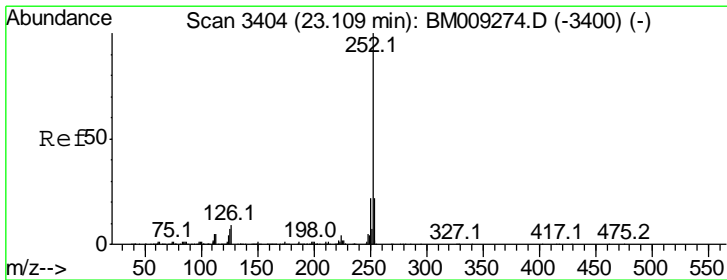
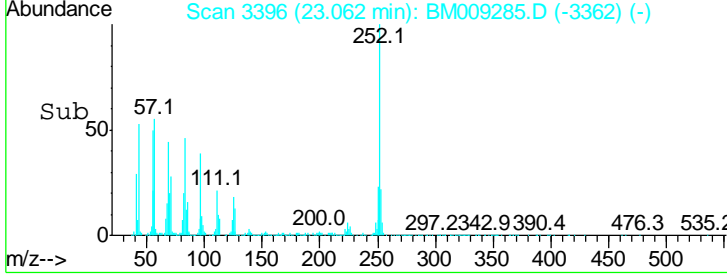
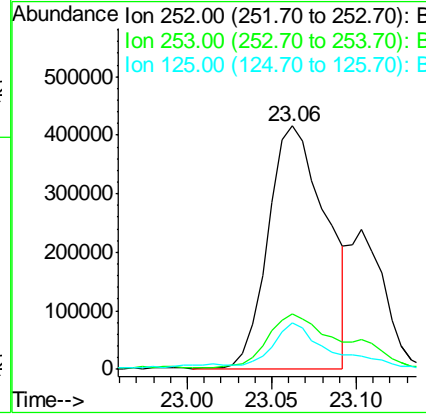
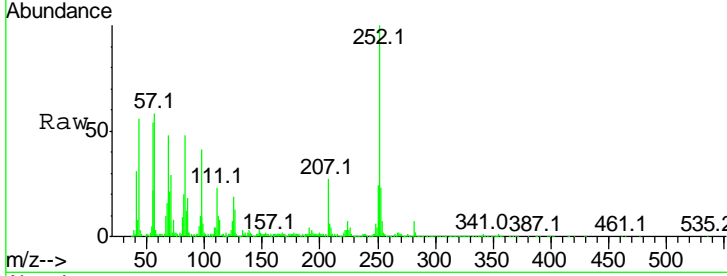




#24
 Benzo(b)fluoranthene
 Concen: 10.18 ng/ul
 RT: 23.06 min Scan# 3396
 Delta R.T. -0.00 min
 Lab File: BM009285.D
 Acq: 17 Mar 2017 21:48

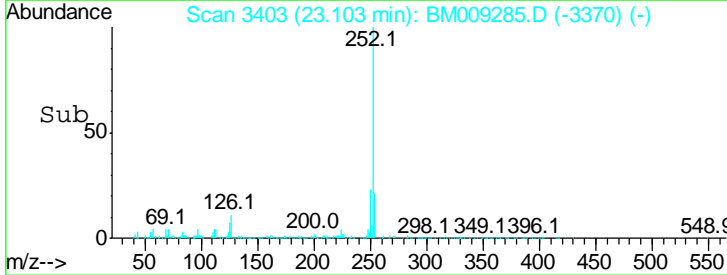
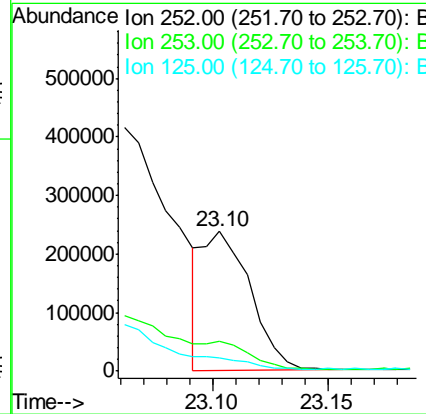
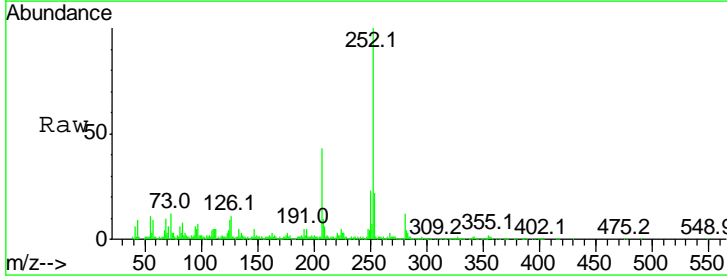
Instrument :
 BNA_M
 ClientSampled :

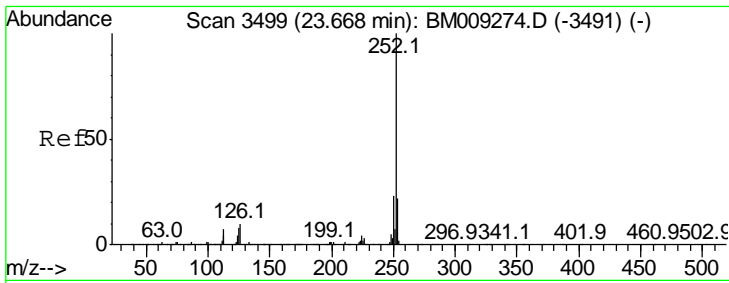
Tgt Ion	Resp	Lower	Upper
252	100		
253	22.8	17.8	26.6
125	18.9	9.4	14.0



#25
 Benzo(k)fluoranthene
 Concen: 3.70 ng/ul
 RT: 23.10 min Scan# 3403
 Delta R.T. -0.01 min
 Lab File: BM009285.D
 Acq: 17 Mar 2017 21:48

Tgt Ion	Resp	Lower	Upper
252	100		
253	21.5	17.4	26.2
125	9.1	8.8	13.2

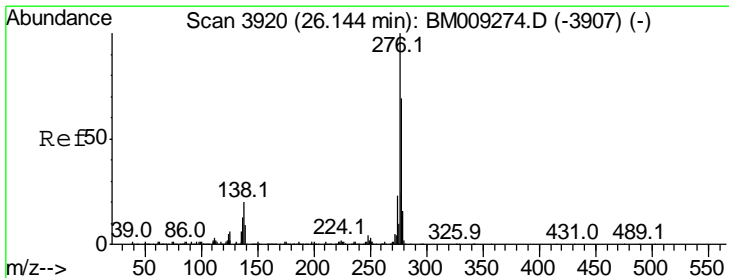
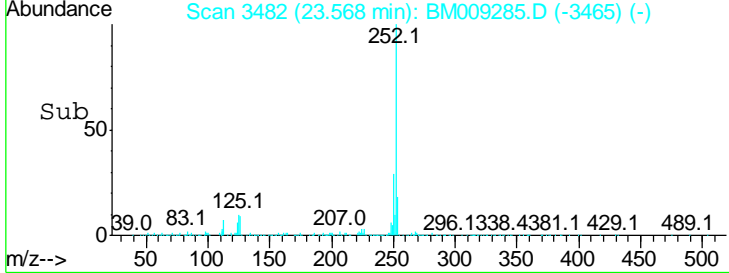
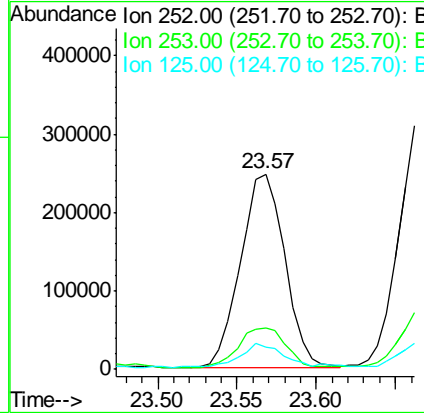
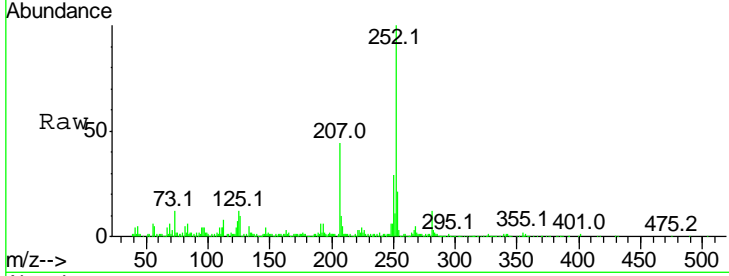




#27
 Benzo(a)pyrene
 Concen: 5.19 ng/ul
 RT: 23.57 min Scan# 3482
 Delta R.T. -0.10 min
 Lab File: BM009285.D
 Acq: 17 Mar 2017 21:48

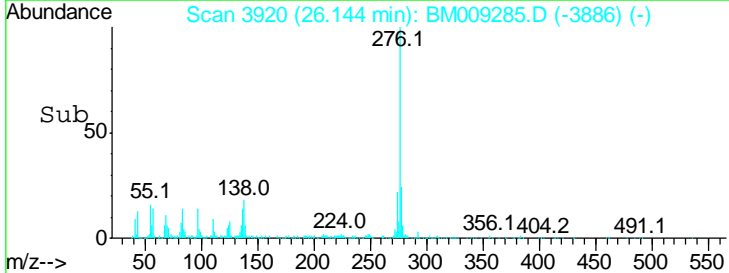
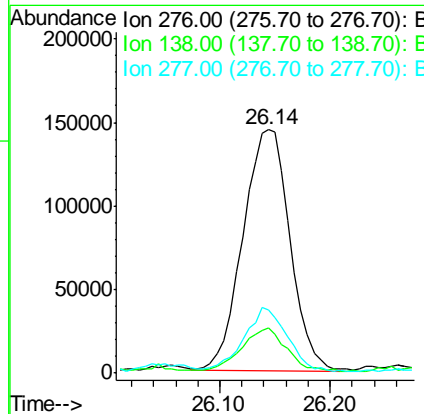
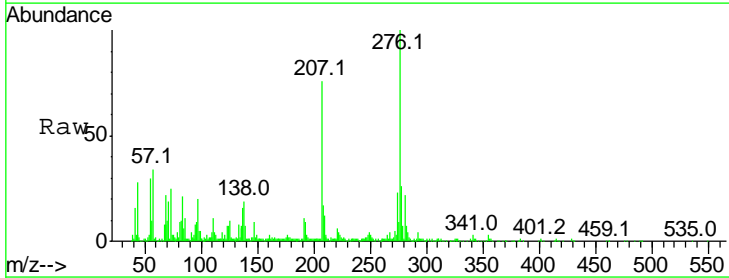
Instrument :
 BNA_M
 ClientSampled :

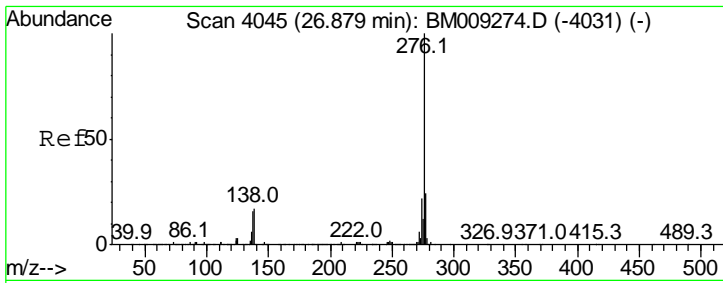
Tgt Ion	Resp	Lower	Upper
252	100		
253	21.0	17.1	25.7
125	11.5	9.4	14.2



#28
 Indeno(1,2,3-cd)pyrene
 Concen: 3.89 ng/ul
 RT: 26.14 min Scan# 3920
 Delta R.T. -0.00 min
 Lab File: BM009285.D
 Acq: 17 Mar 2017 21:48

Tgt Ion	Resp	Lower	Upper
276	100		
138	18.7	17.8	26.6
277	25.8	19.4	29.0





#30
 Benzo(a,h,i)perylene
 Concen: 4.13 ng/ul
 RT: 26.87 min Scan# 4044
 Delta R.T. -0.01 min
 Lab File: BM009285.D
 Acq: 17 Mar 2017 21:48

Instrument :
 BNA_M
 ClientSampled :

Tot Ion	Ion	Resp	Lower	Upper
276	100			
138	16.9		19.0	28.4#
277	24.0		19.7	29.5

