

Data Path : Z:\HPCHEM1\BNA_M\DATA\BM032017\
 Data File : BM009294.D
 Acq On : 20 Mar 2017 14:33
 Operator : SJ/MA
 Sample : I2303-03
 Misc :
 ALS Vial : 8 Sample Multiplier: 1

Instrument :
 BNA_M
 ClientSampleId :
 C0BK0

Manual Integrations
 APPROVED

mohammad
 3/21/2017 5:20:37 PM

Quant Time: Mar 20 15:26:20 2017
 Quant Method : Z:\HPCHEM1\BNA_M\METHODS\SOM-EPA-BM031317MA.M
 Quant Title : SVOA CALIBRATION
 QLast Update : Mon Mar 20 13:19:54 2017
 Response via : Initial Calibration

Internal Standards	R.T.	QIon	Response	Conc	Units	Dev(Min)
1) 1,4-Dichlorobenzene-d4	7.89	152	113854	20.00	ng/ul	0.01
18) Naphthalene-d8	10.68	136	473327	20.00	ng/ul	0.00
35) Acenaphthene-d10	14.52	164	307998	20.00	ng/ul	0.00
61) Phenanthrene-d10	17.26	188	787201m	20.00	ng/ul	0.00
77) Chrysene-d12	21.43	240	1266475	20.00	ng/ul	0.00
85) Perylene-d12	23.77	264	1326212	20.00	ng/ul	0.00

System Monitoring Compounds

3) 1,4-Dioxane-d8	3.34	96	13646	5.28	ng/uL	0.00
5) Phenol-d5	7.03	99	63242	5.13	ng/ul	0.00
7) Bis-(2-Chloroethyl)ether-d	7.20	67	223320	27.84	ng/ul	0.00
9) 2-Chlorophenol-d4	7.40	132	168593	22.40	ng/ul	0.00
13) 4-Methylphenol-d8	8.57	113	123347	12.55	ng/ul	0.00
19) Nitrobenzene-d5	9.04	128	116241	34.39	ng/ul	0.00
22) 2-Nitrophenol-d4	9.76	143	127202	33.90	ng/ul	0.00
26) 2,4-Dichlorophenol-d3	10.29	165	223004	27.83	ng/ul	0.00
29) 4-Chloroaniline-d4	10.82	131	13376	1.40	ng/ul	0.00
43) Dimethylphthalate-d6	13.92	166	886374	37.89	ng/ul	0.00
46) Acenaphthylene-d8	14.21	160	1054841	39.21	ng/ul	0.00
51) 4-Nitrophenol-d4	14.70	143	30805	6.63	ng/ul	0.00
57) Fluorene-d10	15.51	176	812092	38.91	ng/ul	0.00
62) 4,6-Dinitro-2-methylphenol	15.63	200	153816	32.66	ng/ul	0.00
70) Anthracene-d10	17.36	188	1447055	38.84	ng/ul	0.00
78) Pyrene-d10	19.65	212	1851961	36.23	ng/ul	0.00
89) Benzo(a)pyrene-d12	23.62	264	2291670	37.77	ng/ul	0.00

Target Compounds

					Qvalue
20) Nitrobenzene	9.08	77	459506	40.77 ng/ul#	79
36) 1,2,4,5-Tetrachlorobenzene	12.70	216	133388	14.40 ng/ul	98
72) 1,2,3,4-Tetrachlorobenzene	13.31	216	423850	45.83 ng/uL	97
73) Pentachlorobenzene	14.83	250	17141	1.73 ng/uL#	84

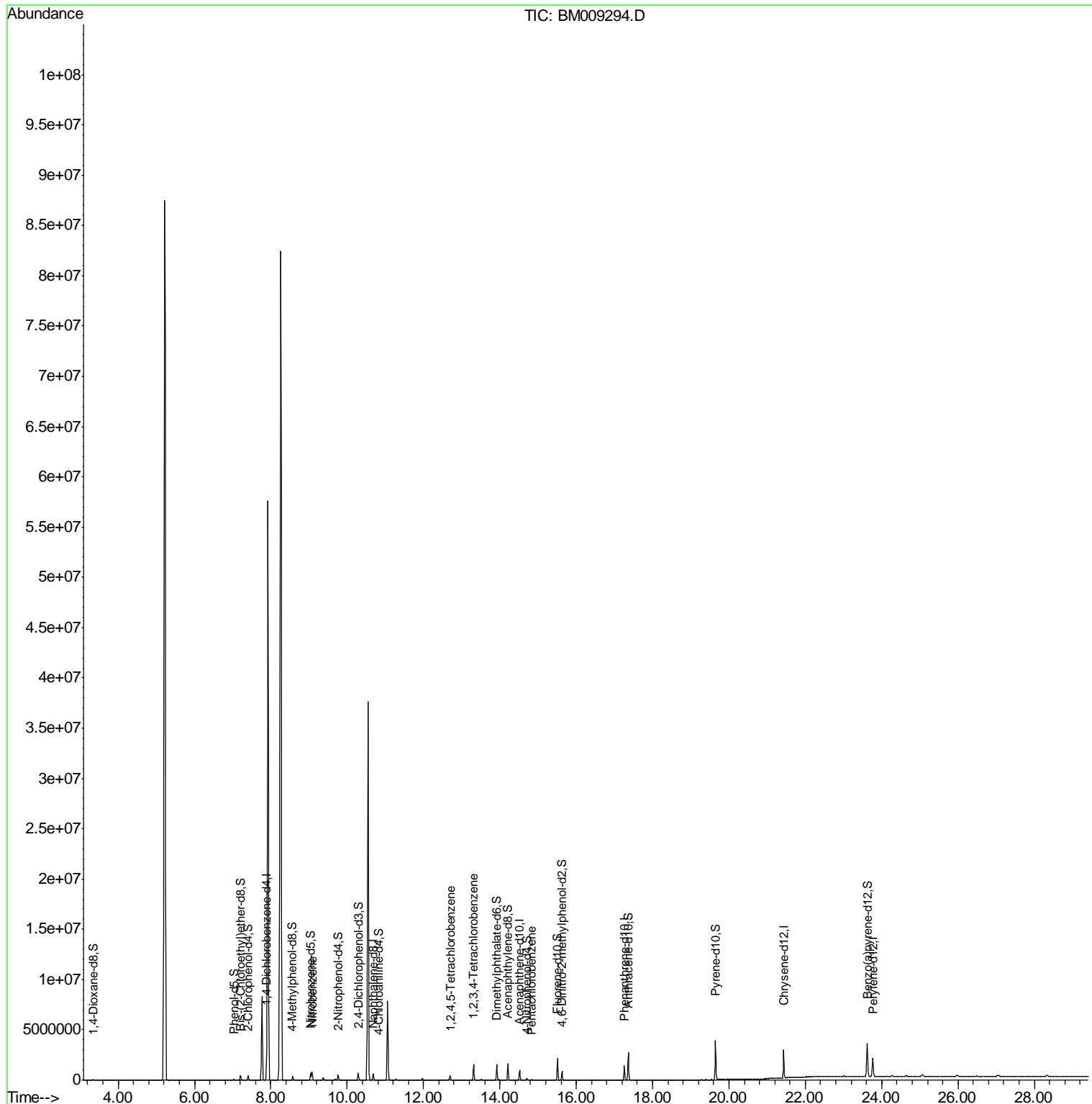
(#) = qualifier out of range (m) = manual integration (+) = signals summed

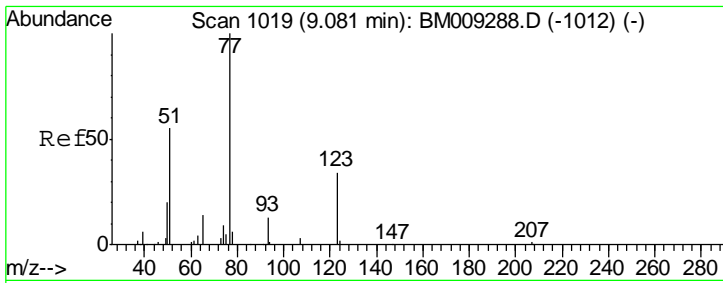
Data Path : Z:\HPCHEM1\BNA_M\DATA\BM032017\
 Data File : BM009294.D
 Acq On : 20 Mar 2017 14:33
 Operator : SJ/MA
 Sample : I2303-03
 Misc :
 ALS Vial : 8 Sample Multiplier: 1

Instrument :
 BNA_M
Client Sampled :
 C0BK0

Manual Integrations
APPROVED
 mohammad
 3/21/2017 5:20:37 PM

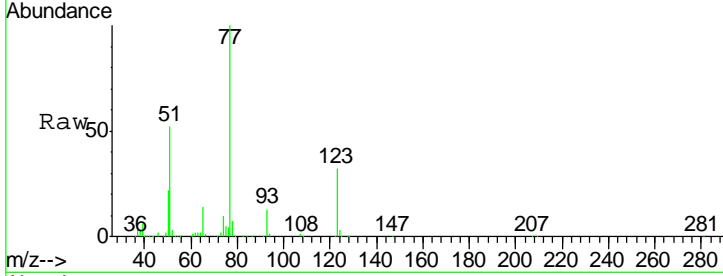
Quant Time: Mar 20 15:26:20 2017
 Quant Method : Z:\HPCHEM1\BNA_M\METHODS\SOM-EPA-BM031317MA.M
 Quant Title : SVOA CALIBRATION
 QLast Update : Mon Mar 20 13:19:54 2017
 Response via : Initial Calibration





#20
 Nitrobenzene
 Concen: 40.77 ng/ul
 RT: 9.08 min Scan# 1019
 Delta R.T. 0.00 min
 Lab File: BM009294.D
 Acq: 20 Mar 2017 14:33

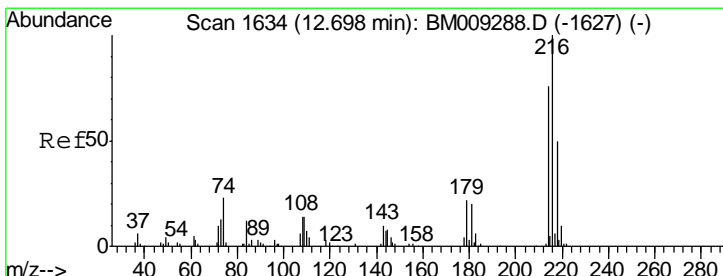
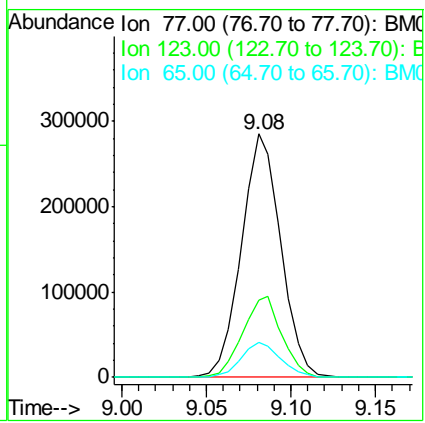
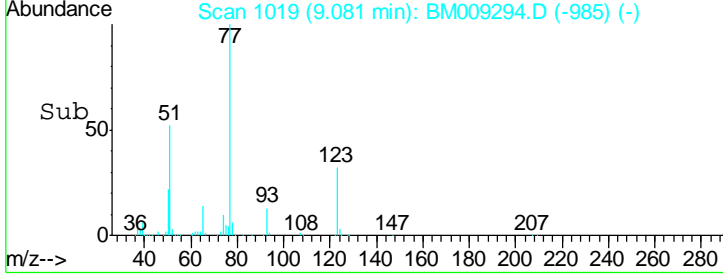
Instrument :
 BNA_M
ClientSampled :
 C0BK0



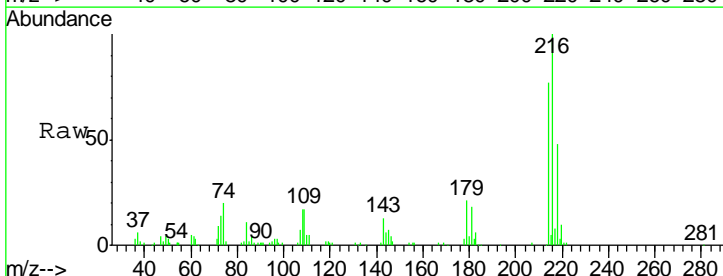
Tgt Ion: 77 Resp: 459506

Ion	Ratio	Lower	Upper
77	100		
123	31.6	39.0	58.4#
65	14.5	10.4	15.6

Manual Integrations
APPROVED
 mohammad
 3/21/2017 5:20:37 PM

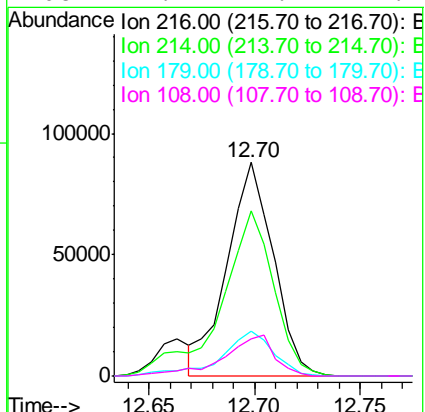
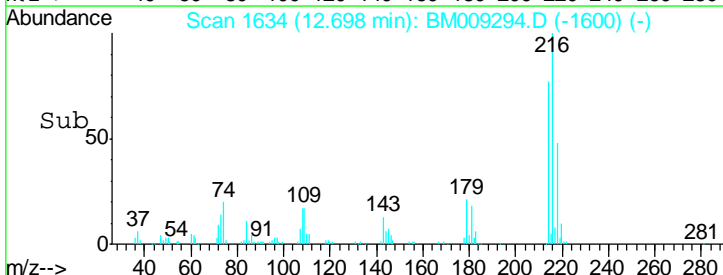


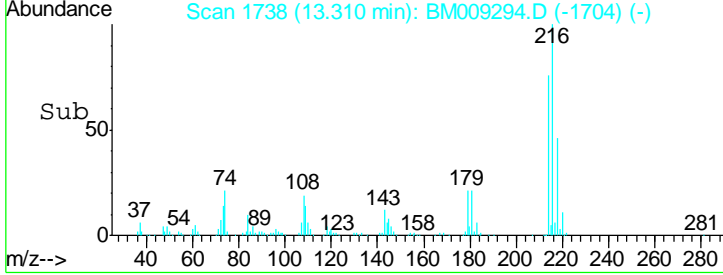
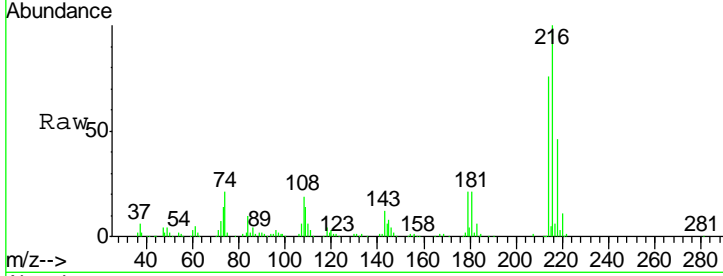
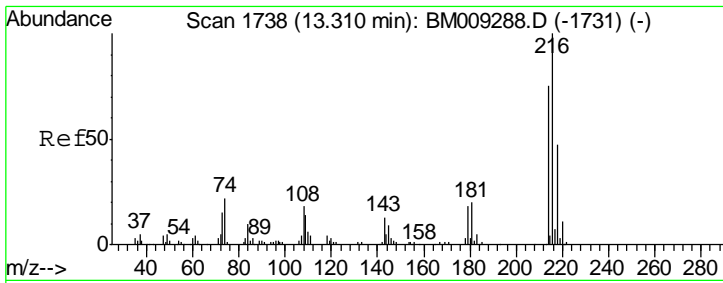
#36
 1,2,4,5-Tetrachlorobenzene
 Concen: 14.40 ng/ul
 RT: 12.70 min Scan# 1634
 Delta R.T. 0.00 min
 Lab File: BM009294.D
 Acq: 20 Mar 2017 14:33



Tgt Ion: 216 Resp: 133388

Ion	Ratio	Lower	Upper
216	100		
214	77.1	62.5	93.7
179	20.9	18.2	27.2
108	17.4	14.2	21.2



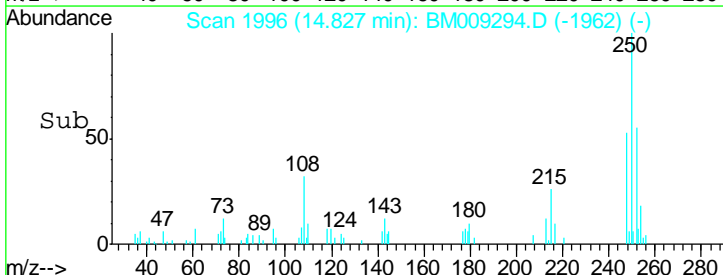
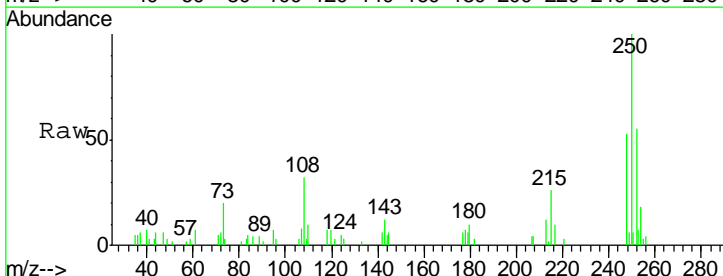
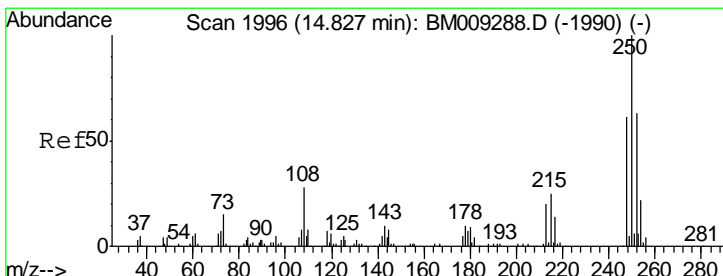
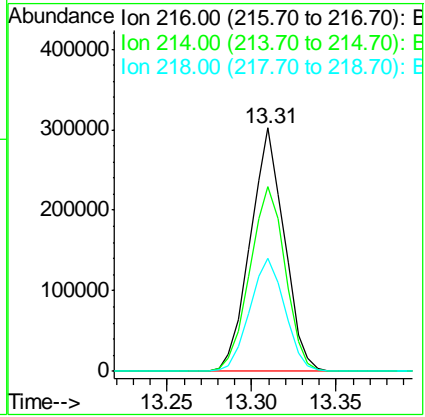


#72
 1,2,3,4-Tetrachlorobenzene
 Concen: 45.83 ng/uL
 RT: 13.31 min Scan# 1738
 Delta R.T. 0.00 min
 Lab File: BM009294.D
 Acq: 20 Mar 2017 14:33

Tgt Ion	Resp	Lower	Upper
216	100		
214	75.8	62.5	93.7
218	46.4	38.4	57.6

Instrument :
 BNA_M
 ClientSampled :
 COBK0

Manual Integrations
 APPROVED
 mohammad
 3/21/2017 5:20:37 PM



#73
 Pentachlorobenzene
 Concen: 1.73 ng/uL
 RT: 14.83 min Scan# 1996
 Delta R.T. 0.00 min
 Lab File: BM009294.D
 Acq: 20 Mar 2017 14:33

Tgt Ion	Resp	Lower	Upper
250	100		
248	50.5	50.6	75.8#
252	52.4	51.4	77.0

