

Data Path : Z:\svoasrv\HPCHEM1\BNA\_M\Data\BM032124\  
 Data File : BM044687.D  
 Acq On : 20 Mar 2024 17:19  
 Operator : MA/JU  
 Sample : P1760-05  
 Misc :  
 ALS Vial : 8 Sample Multiplier: 1

Instrument :  
 BNA\_M  
 ClientSampleId :  
 E0773

Quant Time: Mar 20 19:05:07 2024  
 Quant Method : Z:\svoasrv\HPCHEM1\BNA\_M\Methods\SFAM-EPA-BM030524.MA.M  
 Quant Title : SVOA CALIBRATION  
 QLast Update : Fri Mar 15 11:12:49 2024  
 Response via : Initial Calibration

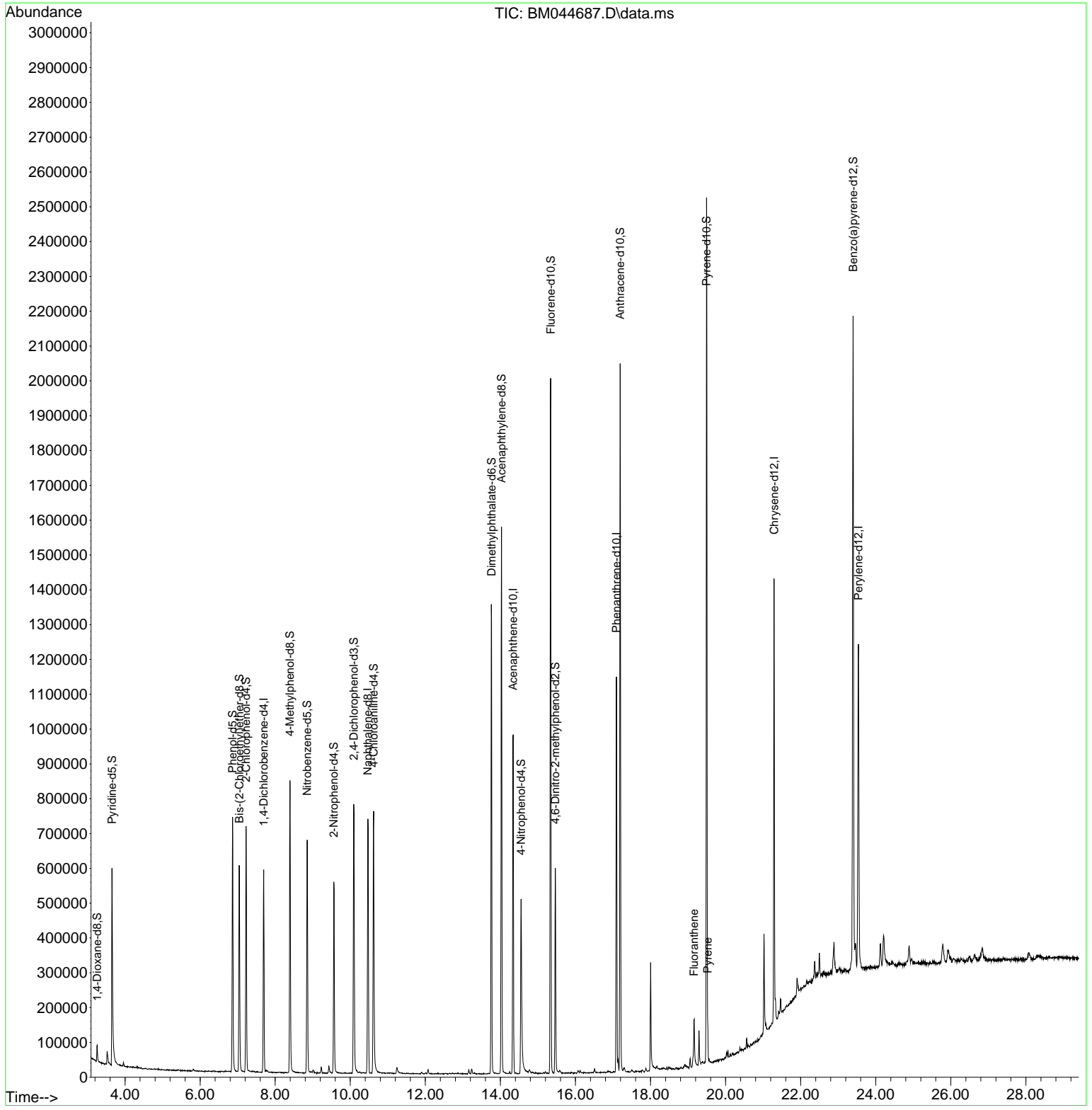
Compound	R.T.	QIon	Response	Conc	Units	Dev(Min)
Internal Standards						
1) 1,4-Dichlorobenzene-d4	7.692	152	151821	20.000	ng/ul	0.00
20) Naphthalene-d8	10.469	136	600877	20.000	ng/ul	-0.01
38) Acenaphthene-d10	14.339	164	339546	20.000	ng/ul	0.00
64) Phenanthrene-d10	17.092	188	649922	20.000	ng/ul	0.00
79) Chrysene-d12	21.292	240	551713	20.000	ng/ul	0.00
88) Perylene-d12	23.538	264	642929	20.000	ng/ul	0.00
System Monitoring Compounds						
3) 1,4-Dioxane-d8	3.257	96	22814	5.097	ng/uL	0.00
4) Pyridine-d5	3.652	84	326180	24.757	ng/ul	0.00
7) Phenol-d5	6.863	99	414056	26.527	ng/ul	0.00
9) Bis-(2-Chloroethyl)eth...	7.045	67	275751	28.601	ng/ul	0.00
11) 2-Chlorophenol-d4	7.222	132	323198	28.176	ng/ul	-0.01
15) 4-Methylphenol-d8	8.392	113	319213	26.040	ng/ul	-0.01
21) Nitrobenzene-d5	8.851	128	161000	31.820	ng/ul	0.00
24) 2-Nitrophenol-d4	9.563	143	172003	31.534	ng/ul	-0.01
28) 2,4-Dichlorophenol-d3	10.092	165	284663	30.664	ng/ul	-0.01
31) 4-Chloroaniline-d4	10.622	131	427867	27.751	ng/ul	0.00
46) Dimethylphthalate-d6	13.763	166	881453	33.093	ng/ul	0.00
49) Acenaphthylene-d8	14.027	160	1009885	33.153	ng/ul	0.00
54) 4-Nitrophenol-d4	14.551	143	141374	25.594	ng/ul	0.00
60) Fluorene-d10	15.339	176	763885	34.128	ng/ul	0.00
65) 4,6-Dinitro-2-methylph...	15.463	200	110648	26.227	ng/ul	-0.01
73) Anthracene-d10	17.192	188	1081659	34.818	ng/ul	0.00
81) Pyrene-d10	19.492	212	1243538	36.749	ng/ul	0.00
92) Benzo(a)pyrene-d12	23.397	264	1245186	36.847	ng/ul	0.00
Target Compounds						
80) Fluoranthene	19.156	202	67687	1.680	ng/ul	97
82) Pyrene	19.521	202	57990	1.382	ng/ul	96

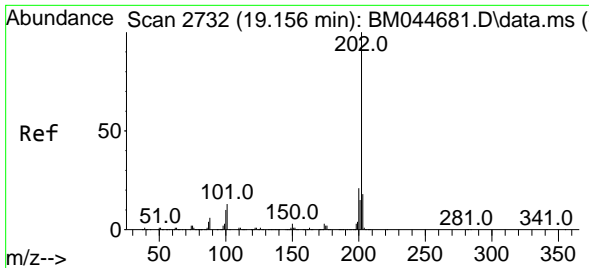
(#) = qualifier out of range (m) = manual integration (+) = signals summed

Data Path : Z:\svoasrv\HPCHEM1\BNA\_M\Data\BM032124\  
 Data File : BM044687.D  
 Acq On : 20 Mar 2024 17:19  
 Operator : MA/JU  
 Sample : P1760-05  
 Misc :  
 ALS Vial : 8 Sample Multiplier: 1

Instrument :  
 BNA\_M  
 ClientSampleId :  
 E0773

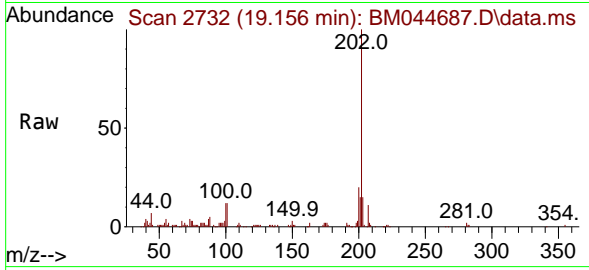
Quant Time: Mar 20 19:05:07 2024  
 Quant Method : Z:\svoasrv\HPCHEM1\BNA\_M\Methods\SFAM-EPA-BM030524.MA.M  
 Quant Title : SVOA CALIBRATION  
 QLast Update : Fri Mar 15 11:12:49 2024  
 Response via : Initial Calibration



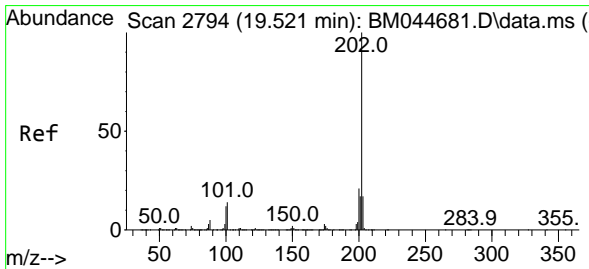
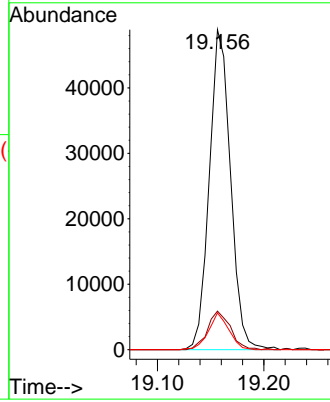
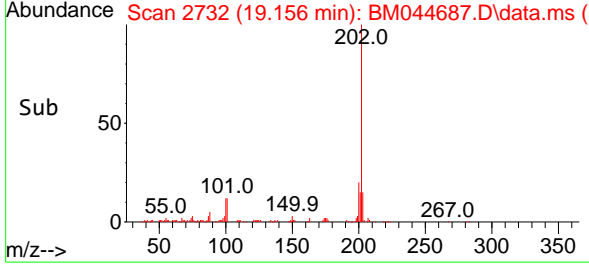


#80  
 Fluoranthene  
 Concen: 1.680 ng/u1  
 RT: 19.156 min Scan# 2732  
 Delta R.T. -0.006 min  
 Lab File: BM044687.D  
 Acq: 20 Mar 2024 17:19

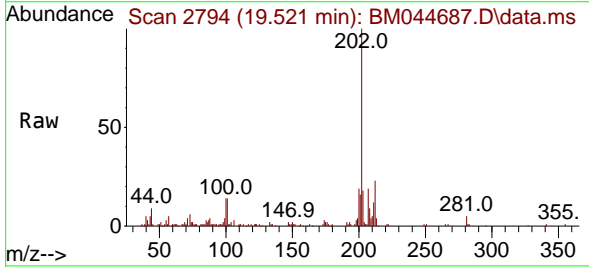
Instrument :  
 BNA\_M  
 ClientSampleId :  
 E0773



Tgt Ion:202 Resp: 67687  
 Ion Ratio Lower Upper  
 202 100  
 101 12.0 10.7 16.1  
 100 11.5 8.2 12.2



#82  
 Pyrene  
 Concen: 1.382 ng/u1  
 RT: 19.521 min Scan# 2794  
 Delta R.T. -0.006 min  
 Lab File: BM044687.D  
 Acq: 20 Mar 2024 17:19



Tgt Ion:202 Resp: 57990  
 Ion Ratio Lower Upper  
 202 100  
 101 14.2 12.5 18.7  
 100 14.0 10.0 15.0

