

Data Path : Z:\SVOASRV\HPCHEM1\BNA M\DATA\BM032221\
 Data File : BM029177.D
 Acq On : 22 Mar 2021 14:12
 Operator : CG/JU
 Sample : M1344-02
 Misc : SFAM-MDL-W-02
 ALS Vial : 3 Sample Multiplier: 1

Instrument :
 BNA_M
ClientSampleId :
 MDL-WATER-QT2-2021-04

Manual Integrations
APPROVED
 mohammad
 3/23/2021 11:23:16 AM

Quant Time: Mar 22 14:49:48 2021
 Quant Method : Z:\SVOASRV\HPCHEM1\BNA_M\METHODS\SFAM-EPA-BM031921.M
 Quant Title : SVOA CALIBRATION
 QLast Update : Mon Mar 22 14:22:20 2021
 Response via : Initial Calibration

Internal Standards	R.T.	QIon	Response	Conc	Units	Dev(Min)
1) 1,4-Dichlorobenzene-d4	7.77	152	98866	20.00	ng/ul	0.00
20) Naphthalene-d8	10.55	136	382289	20.00	ng/ul	0.00
38) Acenaphthene-d10	14.39	164	231530	20.00	ng/ul	0.00
64) Phenanthrene-d10	17.13	188	486173	20.00	ng/ul	0.00
79) Chrysene-d12	21.29	240	523222	20.00	ng/ul	0.00
88) Perylene-d12	23.53	264	556091	20.00	ng/ul	0.00

System Monitoring Compounds

3) 1,4-Dioxane-d8	3.29	96	10854	4.31	ng/uL	0.00
4) Pyridine-d5	3.69	84	168050	25.56	ng/ul	0.00
7) Phenol-d5	6.93	99	254135	32.55	ng/ul	0.00
9) Bis-(2-Chloroethyl)ether-d	7.11	67	164980	36.56	ng/ul	0.00
11) 2-Chlorophenol-d4	7.30	132	206255	33.94	ng/ul	0.00
15) 4-Methylphenol-d8	8.46	113	194574	32.11	ng/ul	0.00
21) Nitrobenzene-d5	8.92	128	88541	36.41	ng/ul	0.00
24) 2-Nitrophenol-d4	9.64	143	86031	37.11	ng/ul	0.00
28) 2,4-Dichlorophenol-d3	10.17	165	188840	31.09	ng/ul	0.00
31) 4-Chloroaniline-d4	10.68	131	259266	30.17	ng/ul	0.00
46) Dimethylphthalate-d6	13.80	166	570269	32.66	ng/ul	0.00
49) Acenaphthylene-d8	14.09	160	710985	34.44	ng/ul	0.00
54) 4-Nitrophenol-d4	14.57	143	87690	30.84	ng/ul	0.00
60) Fluorene-d10	15.38	176	491775	32.73	ng/ul	0.00
65) 4,6-Dinitro-2-methylphenol	15.49	200	64140	27.98	ng/ul	0.00
73) Anthracene-d10	17.23	188	745652	32.12	ng/ul	0.00
81) Pyrene-d10	19.51	212	834547	34.18	ng/ul	0.00
92) Benzo(a)pyrene-d12	23.39	264	1006784	34.01	ng/ul	0.00

Target Compounds

					Ovalue
2) 1,4-Dioxane	3.33	88	2760	1.093	ng/uL 92
5) Pyridine	3.72	79	30114	4.459	ng/ul# 56
6) Benzaldehyde	6.92	77	23197	5.536	ng/ul 94
8) Phenol	6.96	94	38763	4.724	ng/ul 99
10) Bis(2-Chloroethyl)ether	7.20	93	27862	4.595	ng/ul 98
12) 2-Chlorophenol	7.34	128	29993	4.626	ng/ul 98
13) 2-Methylphenol	8.20	108	25748	4.254	ng/ul 99
14) 2,2'-oxybis(1-Chloropropan	8.30	45	40447	5.089	ng/ul 98
16) Acetophenone	8.59	105	44669	4.510	ng/ul 97
17) N-Nitroso-di-n-propylamine	8.57	70	22212	4.715	ng/ul 97
18) 4-Methylphenol	8.53	108	29375	4.570	ng/ul 96
19) Hexachloroethane	8.85	117	12420	4.473	ng/ul 96
22) Nitrobenzene	8.96	77	35910	5.065	ng/ul 98
23) Isophorone	9.49	82	55871	4.411	ng/ul 97
25) 2-Nitrophenol	9.67	139	13839	5.182	ng/ul 99
26) 2,4-Dimethylphenol	9.73	107	32044	4.415	ng/ul 97
27) Bis(2-Chloroethoxy)methane	9.97	93	35601	4.705	ng/ul 98
29) 2,4-Dichlorophenol	10.19	162	28701	4.668	ng/ul 92
30) Naphthalene	10.60	128	94840	4.579	ng/ul 99
32) 4-Chloroaniline	10.70	127	39224	4.488	ng/ul 98
33) Hexachlorobutadiene	10.89	225	18116	4.104	ng/ul 90
34) Caprolactam	11.50	113	5738m	3.672	ng/ul

Data Path : Z:\SVOASRV\HPCHEM1\BNA M\DATA\BM032221\
 Data File : BM029177.D
 Acq On : 22 Mar 2021 14:12
 Operator : CG/JU
 Sample : M1344-02
 Misc : SFAM-MDL-W-02
 ALS Vial : 3 Sample Multiplier: 1

Instrument :
 BNA_M
 ClientSampleID :
 MDL-WATER-QT2-2021-04

Manual Integrations
 APPROVED

mohammad
 3/23/2021 11:23:16 AM

Quant Time: Mar 22 14:49:48 2021
 Quant Method : Z:\SVOASRV\HPCHEM1\BNA_M\METHODS\SFAM-EPA-BM031921.M
 Quant Title : SVOA CALIBRATION
 QLast Update : Mon Mar 22 14:22:20 2021
 Response via : Initial Calibration

Internal Standards	R.T.	QIon	Response	Conc	Units	Dev(Min)
35) 4-Chloro-3-methylphenol	11.82	107	25473	4.265	ng/ul	94
36) 2-Methylnaphthalene	12.21	142	66207	4.525	ng/ul	98
37) 1-Methylnaphthalene	12.43	142	64120	4.439	ng/ul	97
39) 1,2,4,5-Tetrachlorobenzene	12.58	216	32623	4.078	ng/ul#	98
40) Hexachlorocyclopentadiene	12.57	237	18933	3.603	ng/ul	92
41) 2,4,6-Trichlorophenol	12.82	196	16936	3.850	ng/ul	98
42) 2,4,5-Trichlorophenol	12.89	196	19782	4.223	ng/ul	94
43) 1,1'-Biphenyl	13.23	154	86456	4.587	ng/ul	98
44) 2-Chloronaphthalene	13.26	162	65791	4.421	ng/ul	98
45) 2-Nitroaniline	13.46	65	13528	4.238	ng/ul	91
47) Dimethylphthalate	13.85	163	82209	4.600	ng/ul	99
48) 2,6-Dinitrotoluene	13.96	165	11275	4.054	ng/ul#	88
50) Acenaphthylene	14.11	152	98154	4.598	ng/ul	98
51) 3-Nitroaniline	14.29	138	11798	3.835	ng/ul#	93
52) Acenaphthene	14.46	153	71477	4.509	ng/ul	98
53) 2,4-Dinitrophenol	14.49	184	4971	3.330	ng/ul#	75
55) 4-Nitrophenol	14.59	109	12428	4.593	ng/ul	86
56) Dibenzofuran	14.79	168	99062	4.496	ng/ul	97
57) 2,4-Dinitrotoluene	14.74	165	17787	4.481	ng/ul	97
58) 2,3,4,6-Tetrachlorophenol	15.01	232	14444	3.848	ng/ul	92
59) Diethylphthalate	15.22	149	77520	4.405	ng/ul	100
61) Fluorene	15.44	166	83308	4.519	ng/ul	99
62) 4-Chlorophenyl-phenylether	15.43	204	40836	4.414	ng/ul	96
63) 4-Nitroaniline	15.44	138	11773	3.667	ng/ul	90
66) 4,6-Dinitro-2-methylphenol	15.50	198	10536	4.370	ng/ul#	84
67) N-Nitrosodiphenylamine	15.64	169	68600	4.417	ng/ul	94
68) 4-Bromophenyl-phenylether	16.33	248	21722	4.199	ng/ul	93
69) Hexachlorobenzene	16.43	284	25420	4.411	ng/ul	94
70) Atrazine	16.59	200	22575	3.794	ng/ul	99
71) Pentachlorophenol	16.77	266	10127	3.094	ng/ul#	87
72) Phenanthrene	17.17	178	129060	4.496	ng/ul	100
74) Anthracene	17.26	178	133434	4.524	ng/ul	99
75) 1,2,3,4-Tetrachlorobenzene	13.19	216	32862	4.185	ng/uL	100
76) Pentachlorobenzene	14.71	250	30333	3.957	ng/uL	95
77) Carbazole	17.52	167	113213	4.170	ng/ul	98
78) Di-n-butylphthalate	18.10	149	110648	3.946	ng/ul	98
80) Fluoranthene	19.18	202	140453	4.477	ng/ul	99
82) Pyrene	19.54	202	157861	4.800	ng/ul#	96
83) Butylbenzylphthalate	20.44	149	43363	3.752	ng/ul	98
84) 3,3'-Dichlorobenzidine	21.21	252	37761	3.485	ng/ul	93
85) Benzo(a)anthracene	21.28	228	149984	4.443	ng/ul	98
86) Bis(2-ethylhexyl)phthalate	21.23	149	68523	3.609	ng/ul	99
87) Chrysene	21.33	228	149427	4.528	ng/ul	100
89) Di-n-octyl phthalate	22.10	149	116986	3.298	ng/ul	100
90) Benzo(b)fluoranthene	22.86	252	163596	4.552	ng/ul	97
91) Benzo(k)fluoranthene	22.90	252	154383	4.299	ng/ul	99
93) Benzo(a)pyrene	23.43	252	149294	4.584	ng/ul	96
94) Indeno(1,2,3-cd)pyrene	25.79	276	191995	4.384	ng/ul	98
95) Dibenzo(a,h)anthracene	25.80	278	161946	4.383	ng/ul	96
96) Benzo(g,h,i)perylene	26.48	276	155716	4.335	ng/ul	98

Data Path : Z:\SVOASRV\HPCHEM1\BNA M\DATA\BM032221\
 Data File : BM029177.D
 Acq On : 22 Mar 2021 14:12
 Operator : CG/JU
 Sample : M1344-02
 Misc : SFAM-MDL-W-02
 ALS Vial : 3 Sample Multiplier: 1

Instrument :
 BNA_M
ClientSampleId :
 MDL-WATER-QT2-2021-04

Manual Integrations
APPROVED
 mohammad
 3/23/2021 11:23:16 AM

Quant Time: Mar 22 14:49:48 2021
 Quant Method : Z:\SVOASRV\HPCHEM1\BNA_M\METHODS\SFAM-EPA-BM031921.M
 Quant Title : SVOA CALIBRATION
 QLast Update : Mon Mar 22 14:22:20 2021
 Response via : Initial Calibration

Internal Standards	R.T.	QIon	Response	Conc	Units	Dev(Min)
-----	-----	-----	-----	-----	-----	-----
-----	-----	-----	-----	-----	-----	-----

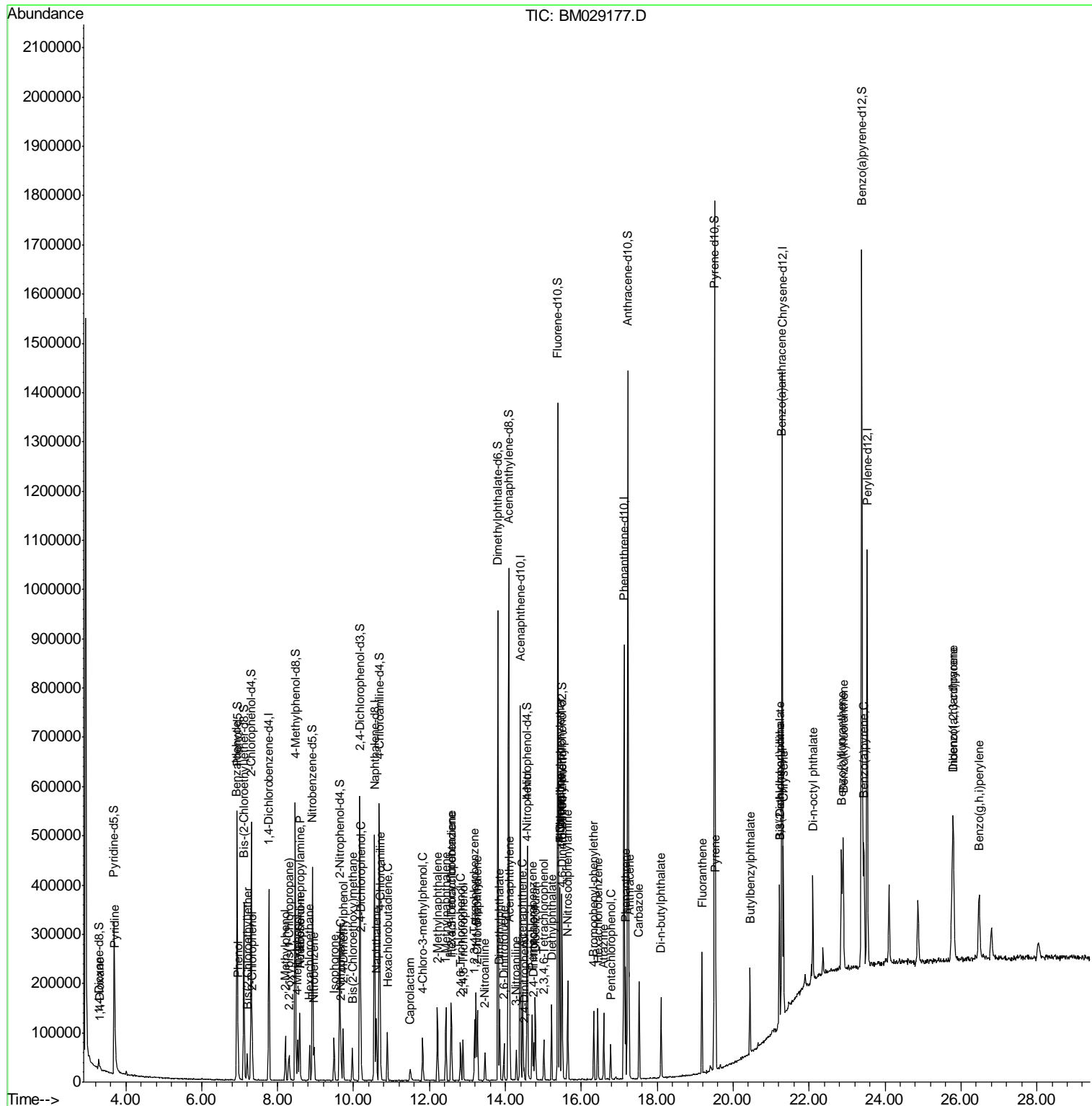
(#) = qualifier out of range (m) = manual integration (+) = signals summed

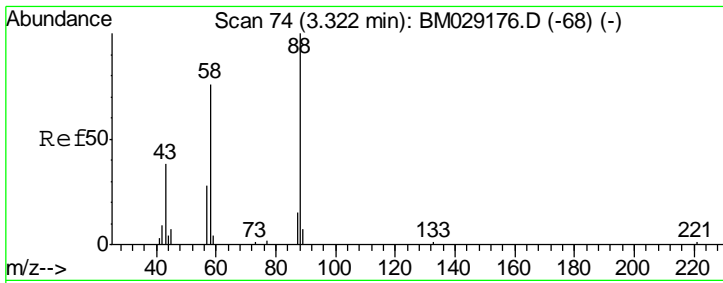
Data Path : Z:\SVOASRV\HPCHEM1\BNA M\DATA\BM032221\
 Data File : BM029177.D
 Acq On : 22 Mar 2021 14:12
 Operator : CG/JU
 Sample : M1344-02
 Misc : SFAM-MDL-W-02
 ALS Vial : 3 Sample Multiplier: 1

Instrument :
 BNA_M
 Client Sampled :
 MDL-WATER-QT2-2021-04

Manual Integrations
APPROVED
 mohammad
 3/23/2021 11:23:16 AM

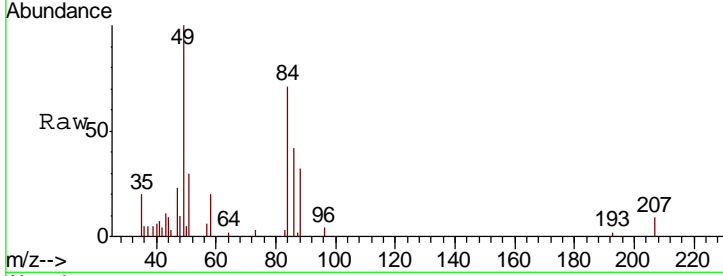
Quant Time: Mar 22 14:49:48 2021
 Quant Method : Z:\SVOASRV\HPCHEM1\BNA_M\METHODS\SFAM-EPA-BM031921.M
 Quant Title : SVOA CALIBRATION
 QLast Update : Mon Mar 22 14:22:20 2021
 Response via : Initial Calibration





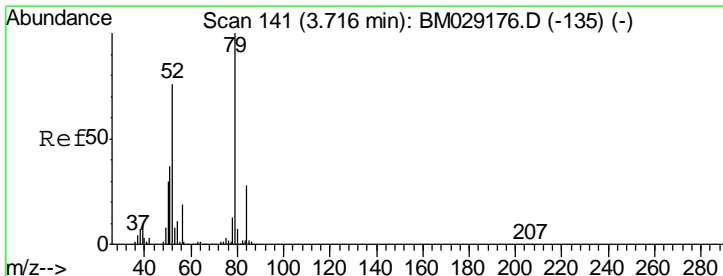
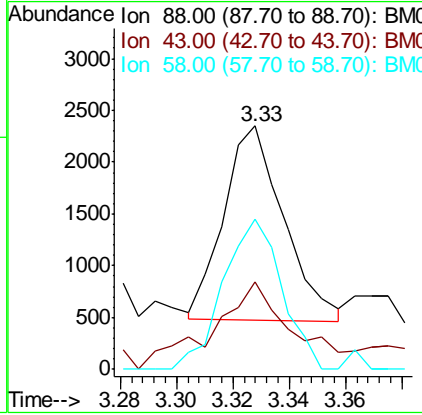
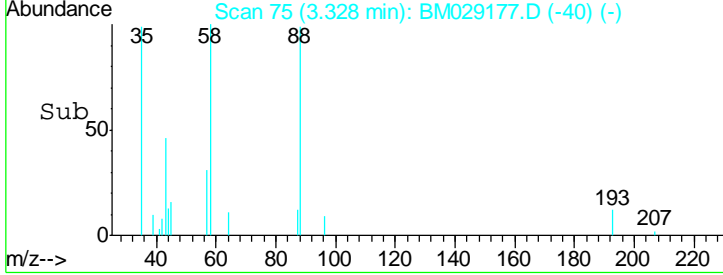
#2
 1,4-Dioxane
 Concen: 1.093 ng/uL
 RT: 3.33 min Scan# 75
 Delta R.T. 0.01 min
 Lab File: BM029177.D
 Acq: 22 Mar 2021 14:12

Instrument :
 BNA_M
ClientSampled :
 MDL-WATER-QT2-2021-04

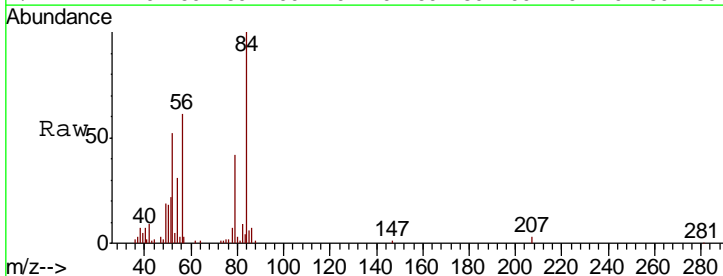


Tgt Ion	Resp	Lower	Upper
88	2760		
88	100		
43	36.0	28.7	43.1
58	61.8	57.7	86.5

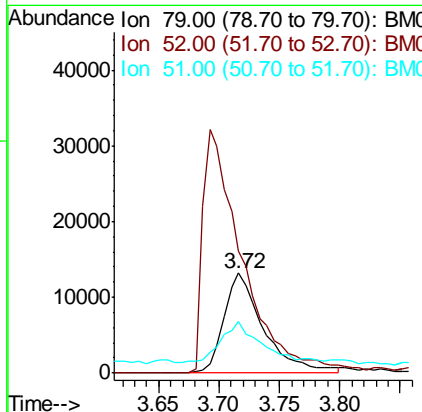
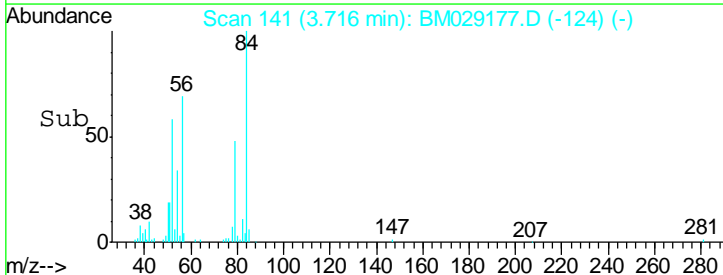
Manual Integrations
APPROVED
 mohammad
 3/23/2021 11:23:16 AM

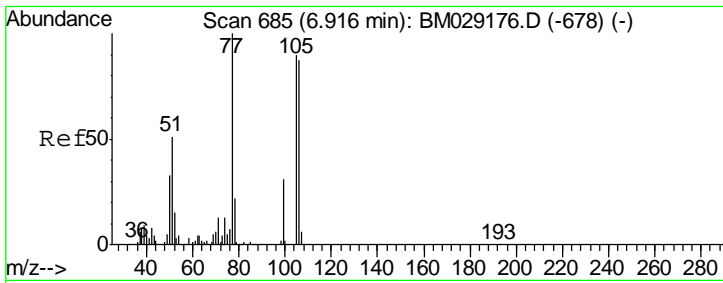


#5
 Pyridine
 Concen: 4.459 ng/ul
 RT: 3.72 min Scan# 141
 Delta R.T. -0.00 min
 Lab File: BM029177.D
 Acq: 22 Mar 2021 14:12



Tgt Ion	Resp	Lower	Upper
79	30114		
79	100		
52	122.6	60.6	91.0#
51	52.2	30.2	45.2#





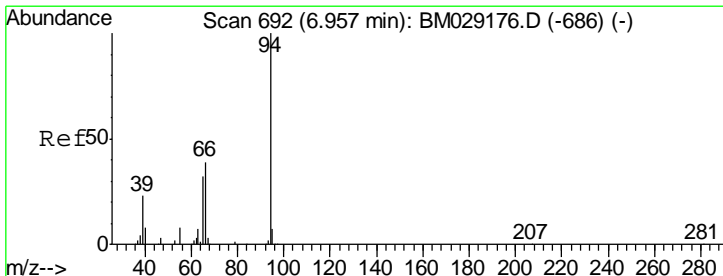
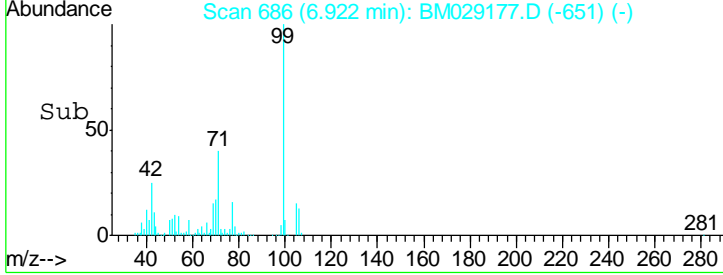
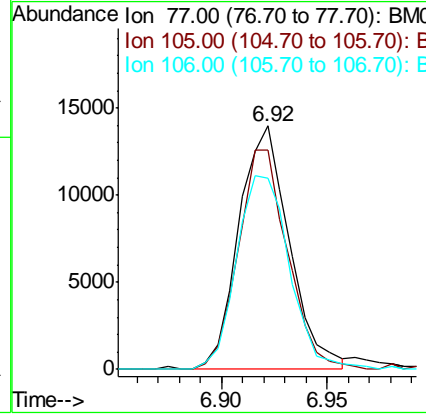
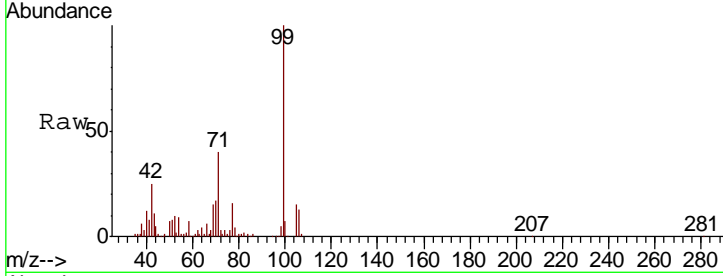
#6
Benzaldehyde
Concen: 5.536 ng/ul
RT: 6.92 min Scan# 686
Delta R.T. 0.01 min
Lab File: BM029177.D
Acq: 22 Mar 2021 14:12

Instrument :
BNA_M
ClientSampled :
MDL-WATER-QT2-2021-04

Tgt Ion	Resp	Lower	Upper
77	100		
105	90.2	74.8	112.2
106	78.5	69.0	103.6

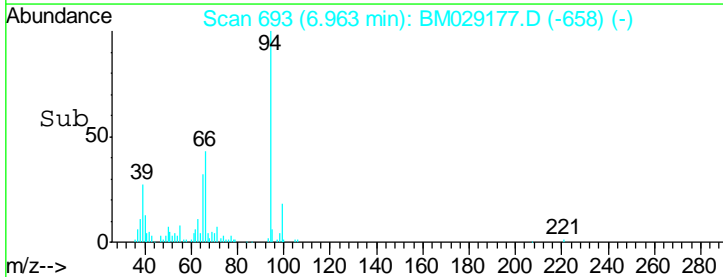
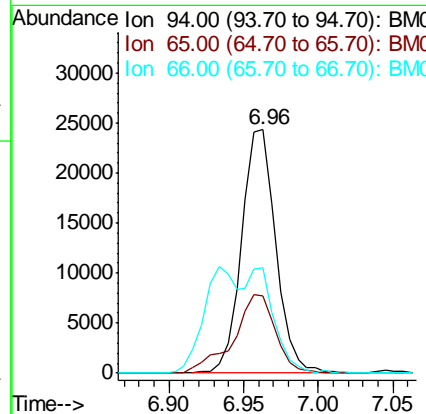
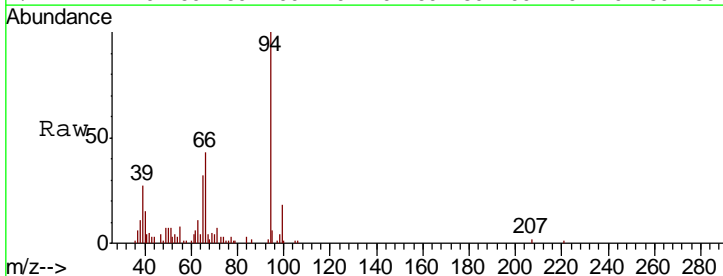
Manual Integrations
APPROVED

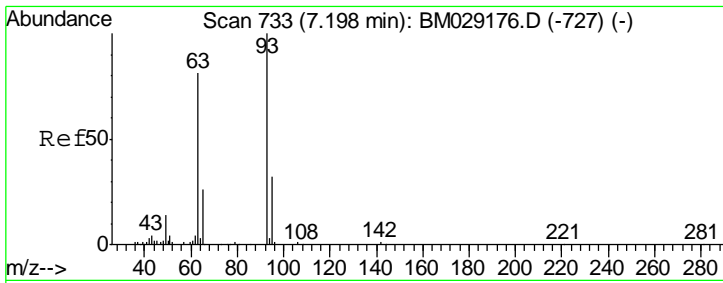
mohammad
3/23/2021 11:23:16 AM



#8
Phenol
Concen: 4.724 ng/ul
RT: 6.96 min Scan# 693
Delta R.T. 0.01 min
Lab File: BM029177.D
Acq: 22 Mar 2021 14:12

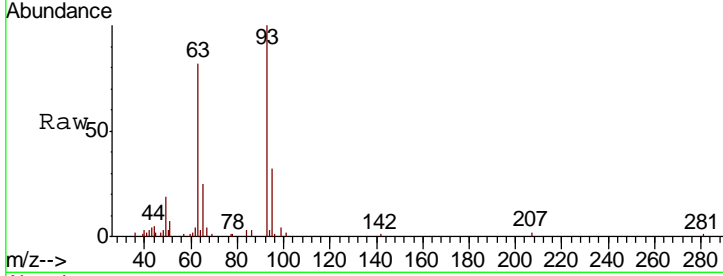
Tgt Ion	Resp	Lower	Upper
94	100		
65	31.8	25.1	37.7
66	43.4	35.4	53.0





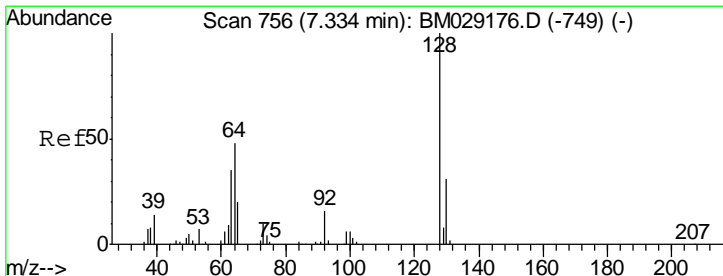
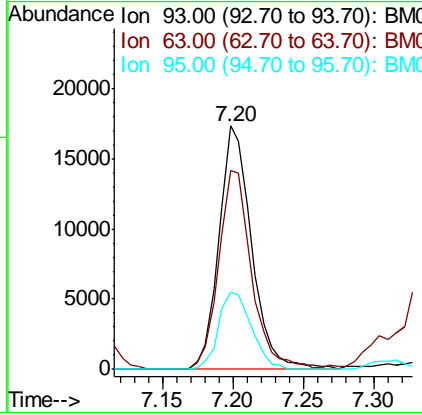
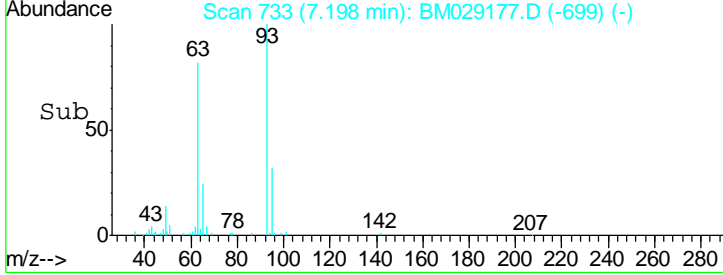
#10
 Bis(2-Chloroethyl)ether
 Concen: 4.595 ng/ul
 RT: 7.20 min Scan# 733
 Delta R.T. -0.00 min
 Lab File: BM029177.D
 Acq: 22 Mar 2021 14:12

Instrument :
 BNA_M
ClientSampled :
 MDL-WATER-QT2-2021-04



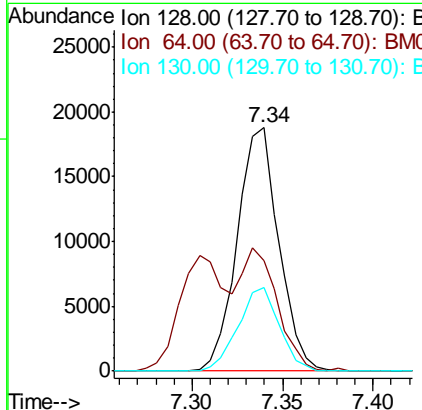
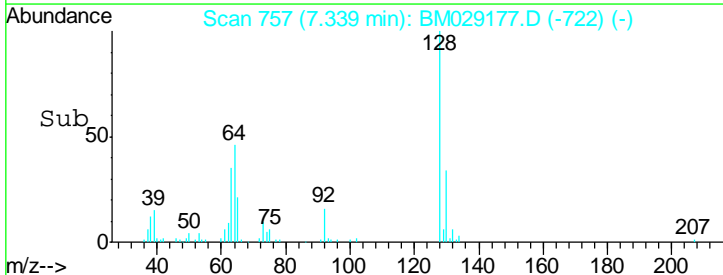
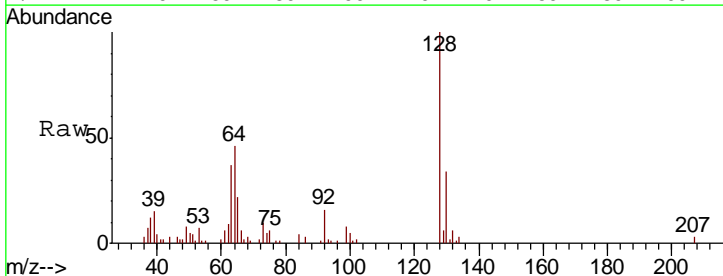
Tgt Ion	Resp	Lower	Upper
93	27862		
93	100		
63	81.7	63.7	95.5
95	31.7	26.3	39.5

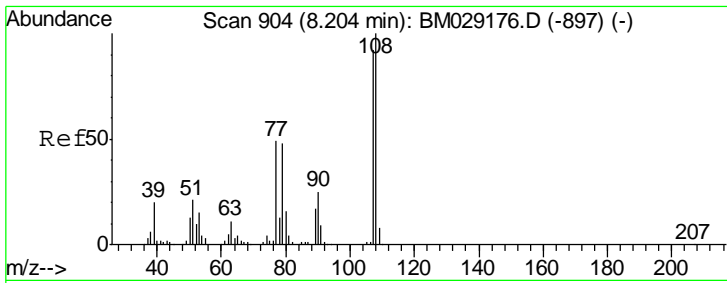
Manual Integrations
APPROVED
 mohammad
 3/23/2021 11:23:16 AM



#12
 2-Chlorophenol
 Concen: 4.626 ng/ul
 RT: 7.34 min Scan# 757
 Delta R.T. 0.01 min
 Lab File: BM029177.D
 Acq: 22 Mar 2021 14:12

Tgt Ion	Resp	Lower	Upper
128	29993		
128	100		
64	45.5	37.5	56.3
130	34.1	26.5	39.7





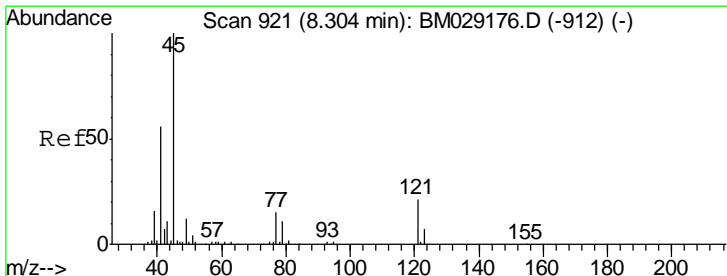
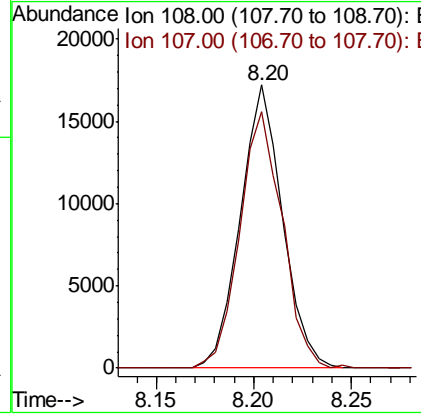
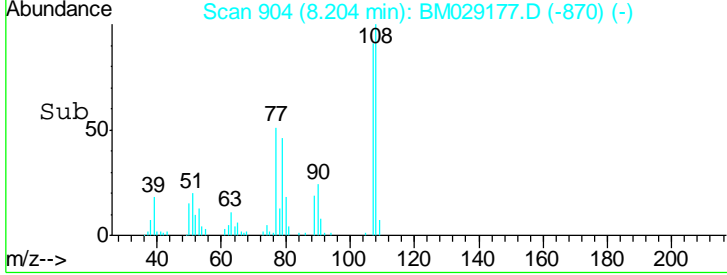
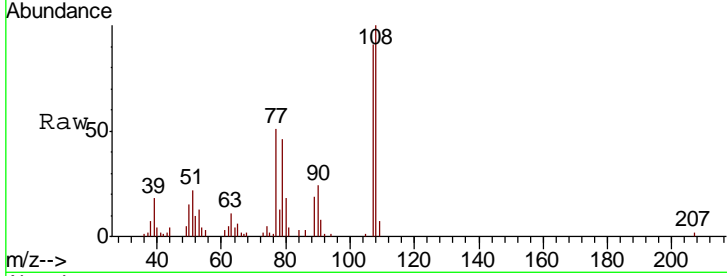
#13
 2-Methylphenol
 Concen: 4.254 ng/ul
 RT: 8.20 min Scan# 904
 Delta R.T. -0.00 min
 Lab File: BM029177.D
 Acq: 22 Mar 2021 14:12

Instrument :
 BNA_M
ClientSampled :
 MDL-WATER-QT2-2021-04

Tgt Ion	Resp	Lower	Upper
108	25748		
107	90.8	71.9	107.9

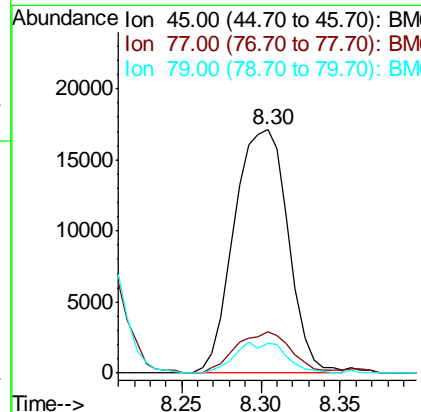
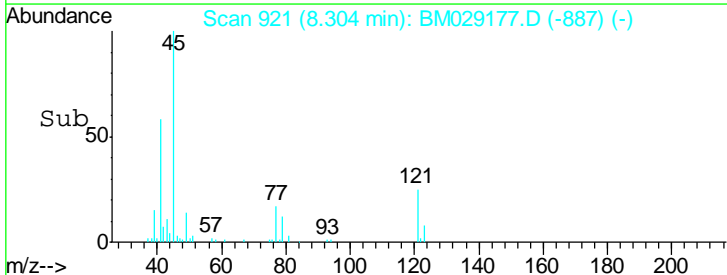
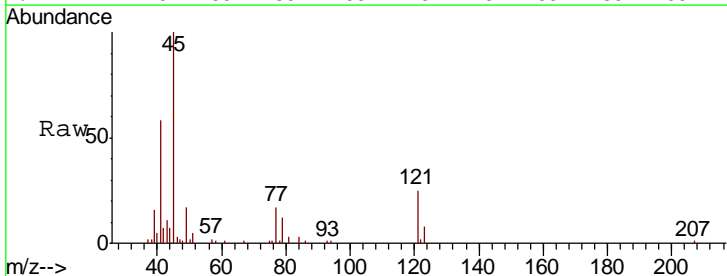
Manual Integrations
APPROVED

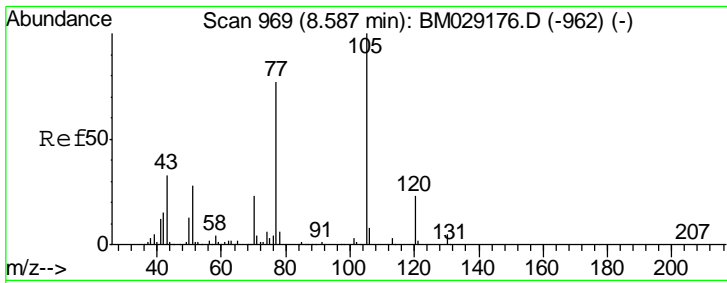
mohammad
 3/23/2021 11:23:16 AM



#14
 2,2'-oxybis(1-Chloropropane)
 Concen: 5.089 ng/ul
 RT: 8.30 min Scan# 921
 Delta R.T. -0.00 min
 Lab File: BM029177.D
 Acq: 22 Mar 2021 14:12

Tgt Ion	Resp	Lower	Upper
45	40447		
77	17.1	12.7	19.1
79	12.5	9.8	14.6





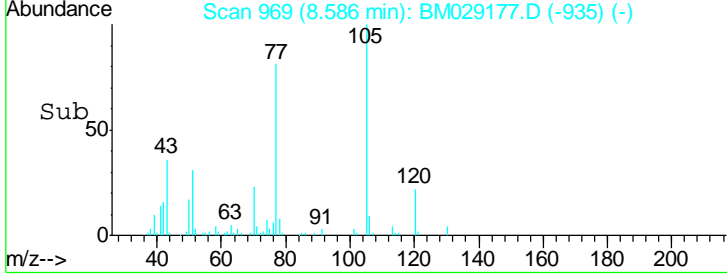
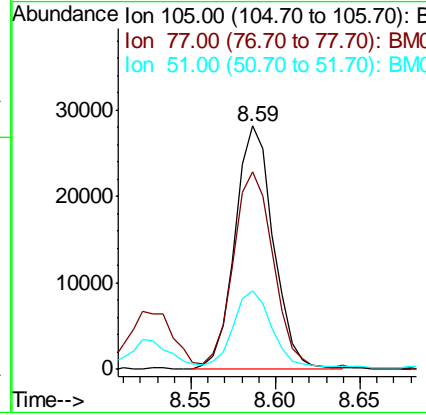
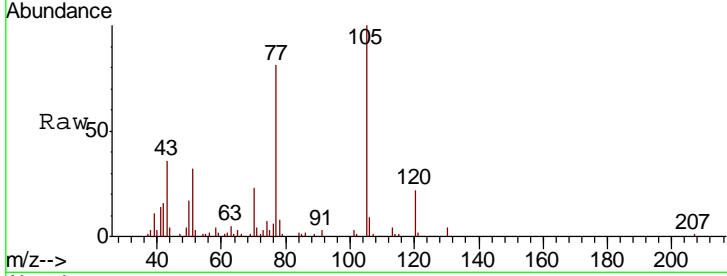
#16
 Acetophenone
 Concen: 4.510 ng/ul
 RT: 8.59 min Scan# 969
 Delta R.T. -0.00 min
 Lab File: BM029177.D
 Acq: 22 Mar 2021 14:12

Instrument :
 BNA_M
ClientSampled :
 MDL-WATER-QT2-2021-04

Tgt Ion	Resp	Lower	Upper
105	44669		
105	100		
77	81.3	66.2	99.2
51	32.1	23.2	34.8

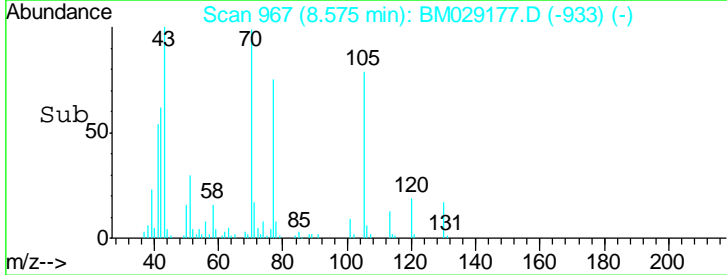
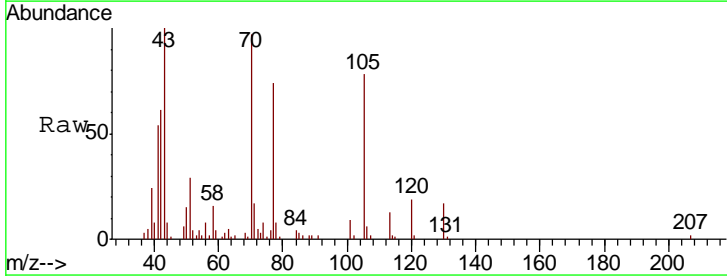
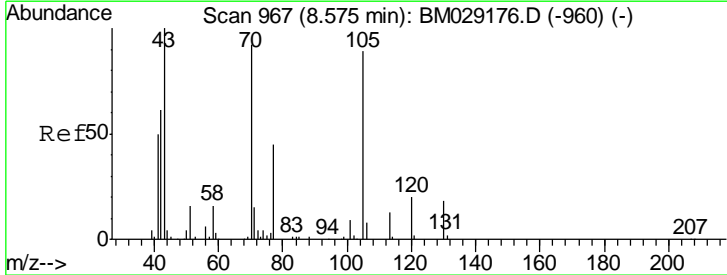
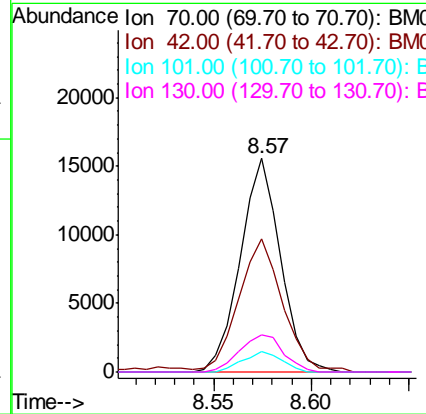
Manual Integrations
APPROVED

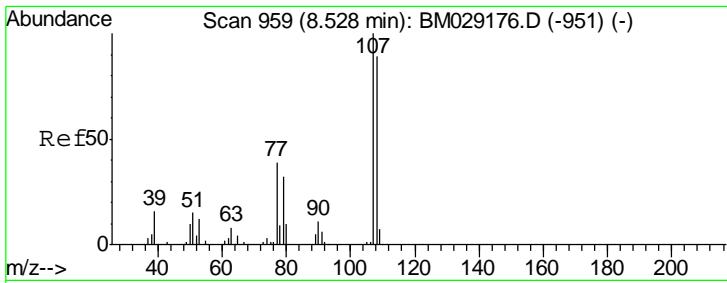
mohammad
 3/23/2021 11:23:16 AM



#17
 N-Nitroso-di-n-propylamine
 Concen: 4.715 ng/ul
 RT: 8.57 min Scan# 967
 Delta R.T. -0.00 min
 Lab File: BM029177.D
 Acq: 22 Mar 2021 14:12

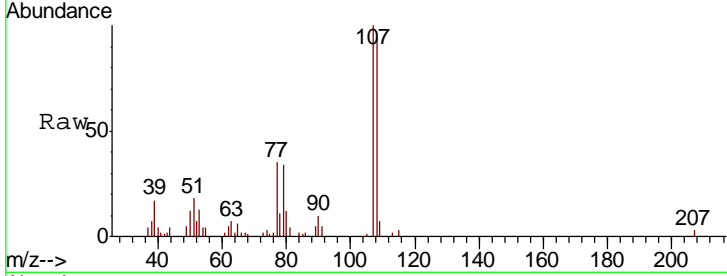
Tgt Ion	Resp	Lower	Upper
70	22212		
70	100		
42	62.6	50.7	76.1
101	9.4	7.0	10.4
130	17.5	16.9	25.3





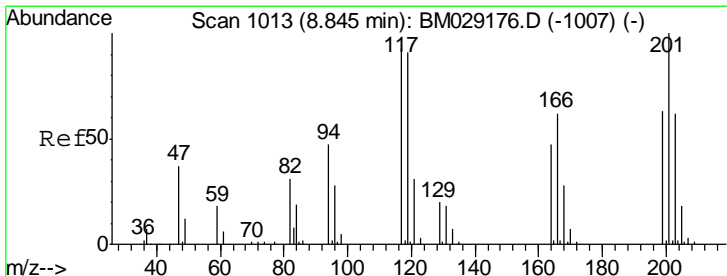
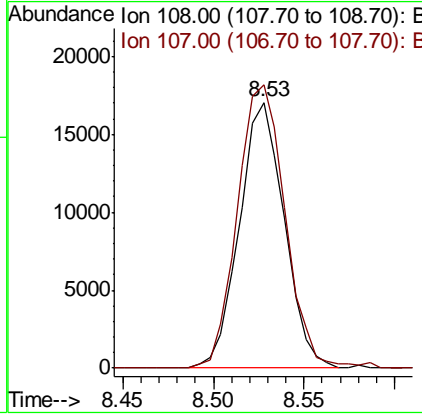
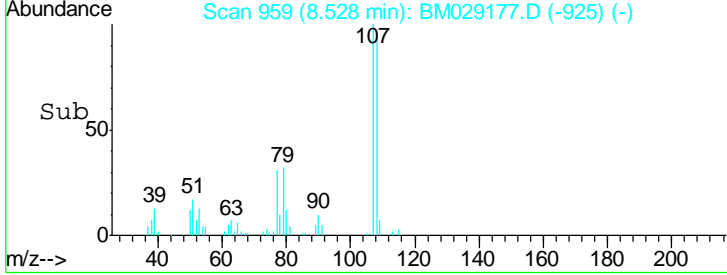
#18
 4-Methylphenol
 Concen: 4.570 ng/ul
 RT: 8.53 min Scan# 959
 Delta R.T. -0.00 min
 Lab File: BM029177.D
 Acq: 22 Mar 2021 14:12

Instrument :
 BNA_M
ClientSampled :
 MDL-WATER-QT2-2021-04

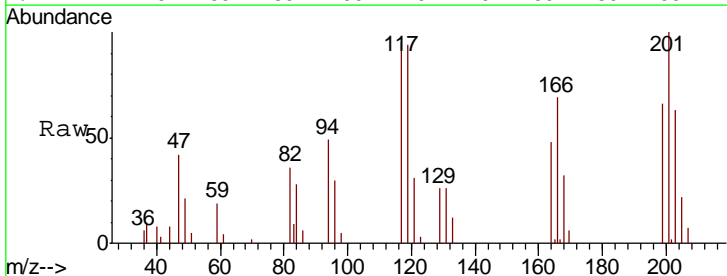


Tgt Ion	Ratio	Lower	Upper
108	100		
107	106.5	88.8	133.2

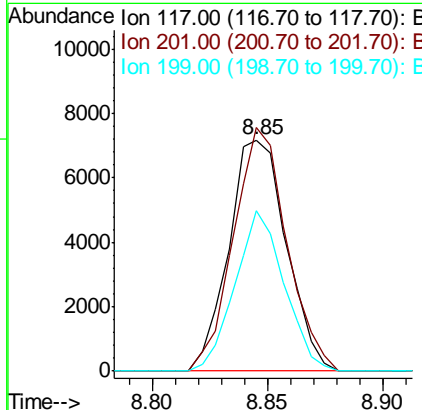
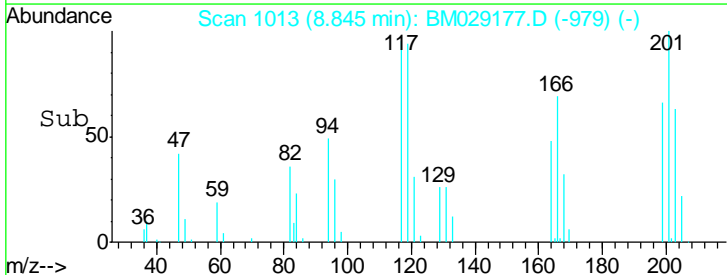
Manual Integrations
APPROVED
 mohammad
 3/23/2021 11:23:16 AM

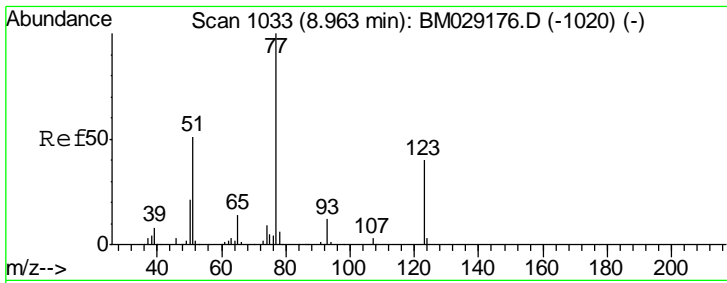


#19
 Hexachloroethane
 Concen: 4.473 ng/ul
 RT: 8.85 min Scan# 1013
 Delta R.T. -0.00 min
 Lab File: BM029177.D
 Acq: 22 Mar 2021 14:12



Tgt Ion	Ratio	Lower	Upper
117	100		
201	105.3	82.4	123.6
199	69.2	51.0	76.6





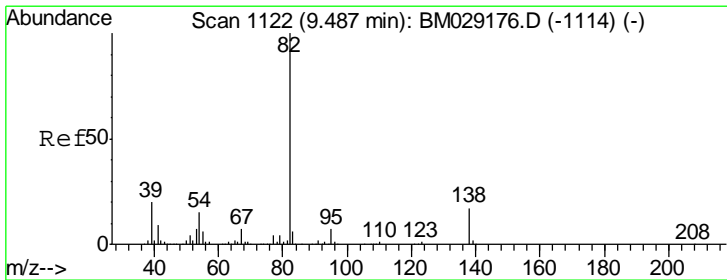
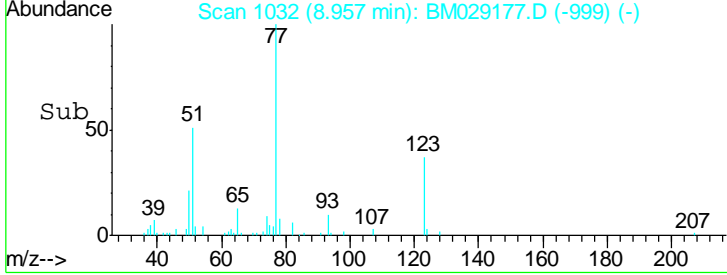
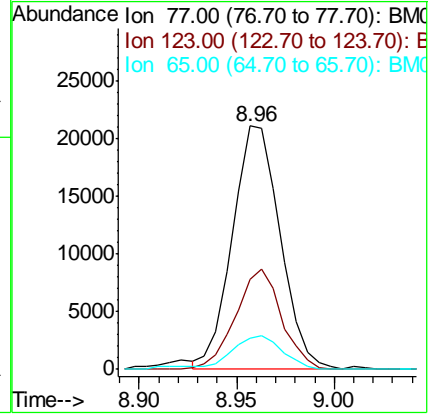
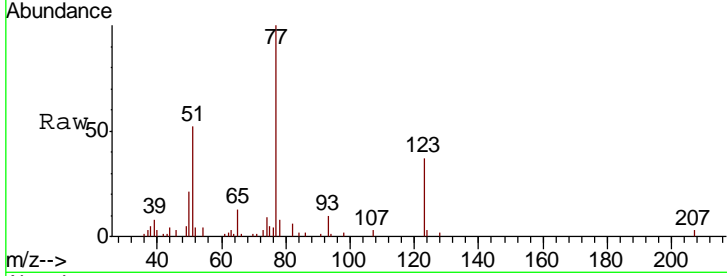
#22
 Nitrobenzene
 Concen: 5.065 ng/ul
 RT: 8.96 min Scan# 1032
 Delta R.T. -0.01 min
 Lab File: BM029177.D
 Acq: 22 Mar 2021 14:12

Instrument :
 BNA_M
ClientSampled :
 MDL-WATER-QT2-2021-04

Tgt Ion	Resp	Lower	Upper
77	100		
123	37.1	30.9	46.3
65	13.0	10.2	15.4

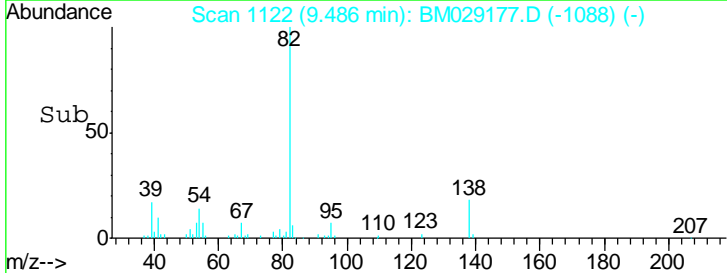
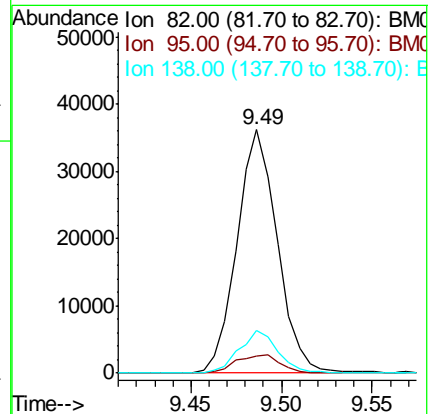
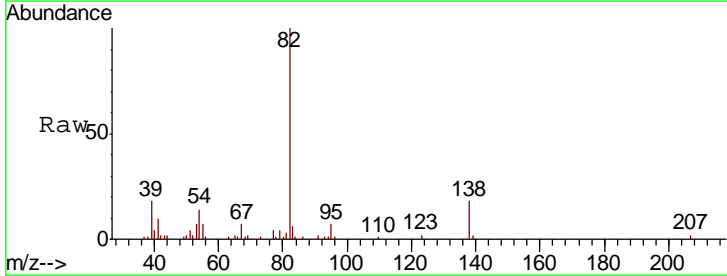
Manual Integrations
APPROVED

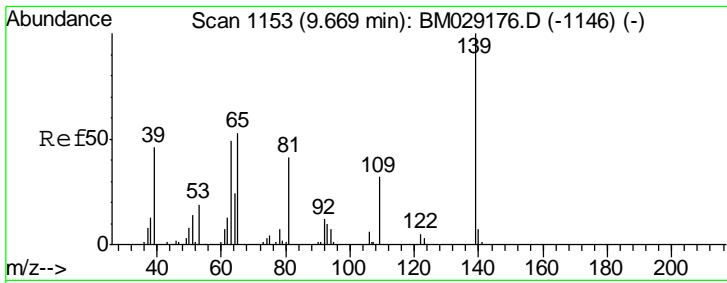
mohammad
 3/23/2021 11:23:16 AM



#23
 Isophorone
 Concen: 4.411 ng/ul
 RT: 9.49 min Scan# 1122
 Delta R.T. -0.00 min
 Lab File: BM029177.D
 Acq: 22 Mar 2021 14:12

Tgt Ion	Resp	Lower	Upper
82	100		
95	6.8	6.2	9.2
138	17.6	15.1	22.7





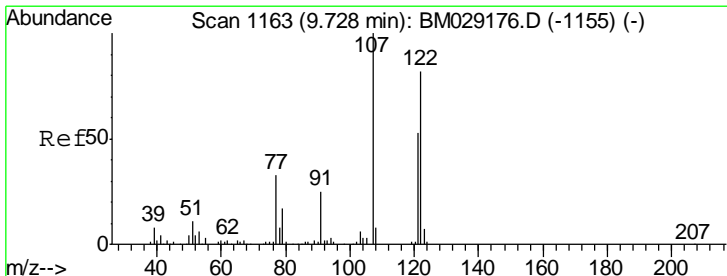
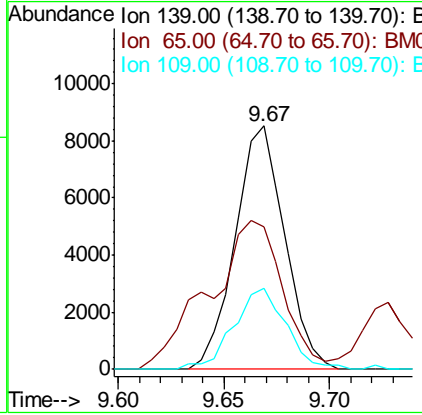
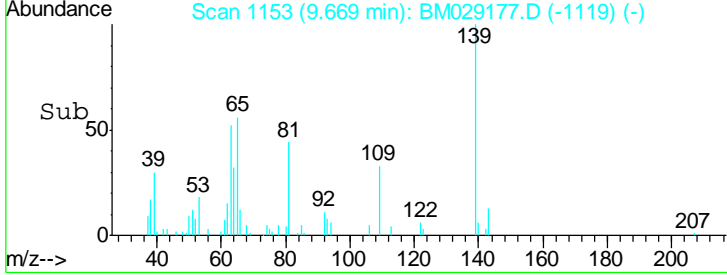
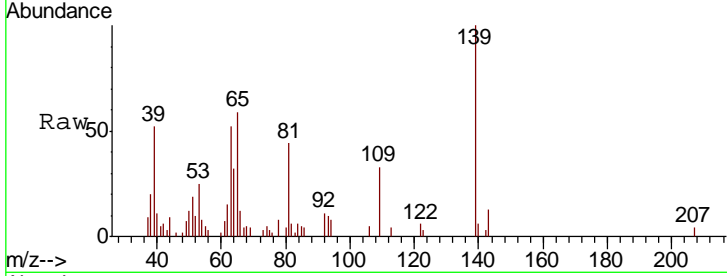
#25
 2-Nitrophenol
 Concen: 5.182 ng/ul
 RT: 9.67 min Scan# 1153
 Delta R.T. -0.00 min
 Lab File: BM029177.D
 Acq: 22 Mar 2021 14:12

Instrument :
 BNA_M
ClientSampled :
 MDL-WATER-QT2-2021-04

Tgt Ion	Resp	Lower	Upper
139	13839		
65	58.6	46.2	69.4
109	33.1	27.0	40.4

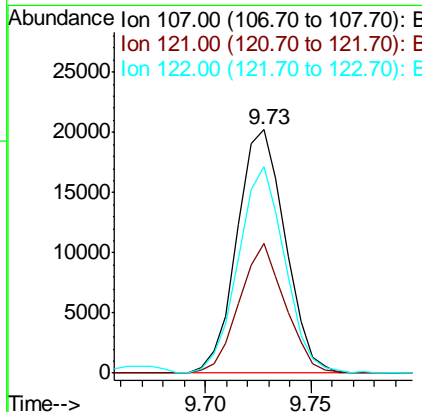
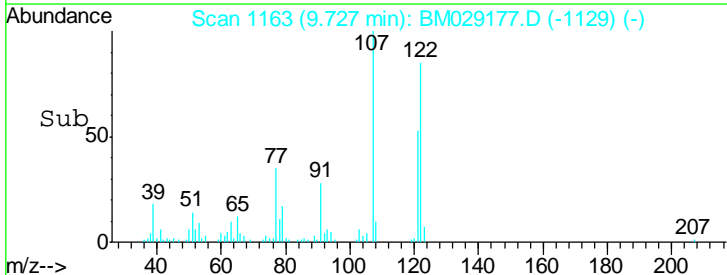
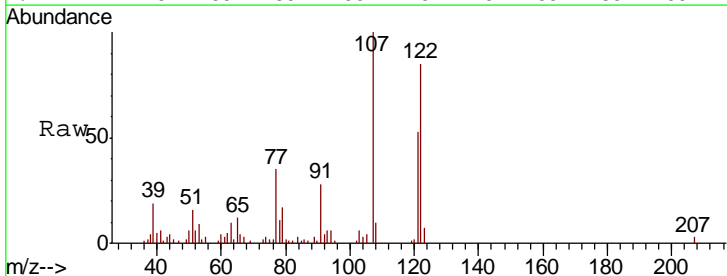
Manual Integrations
APPROVED

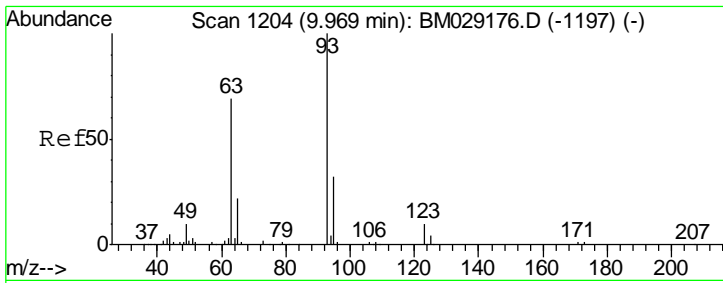
mohammad
 3/23/2021 11:23:16 AM



#26
 2,4-Dimethylphenol
 Concen: 4.415 ng/ul
 RT: 9.73 min Scan# 1163
 Delta R.T. -0.00 min
 Lab File: BM029177.D
 Acq: 22 Mar 2021 14:12

Tgt Ion	Resp	Lower	Upper
107	32044		
121	53.2	40.2	60.2
122	84.6	66.2	99.2





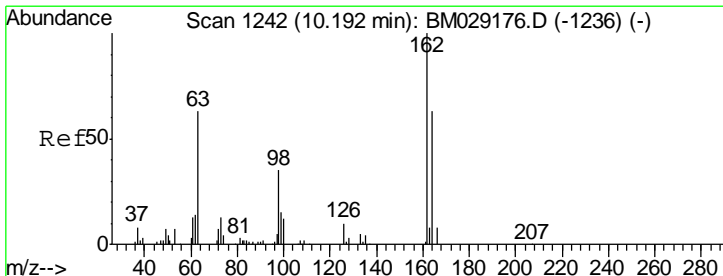
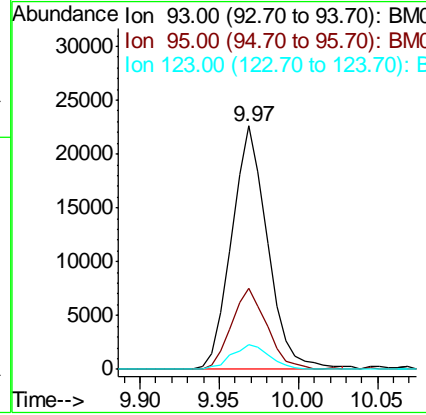
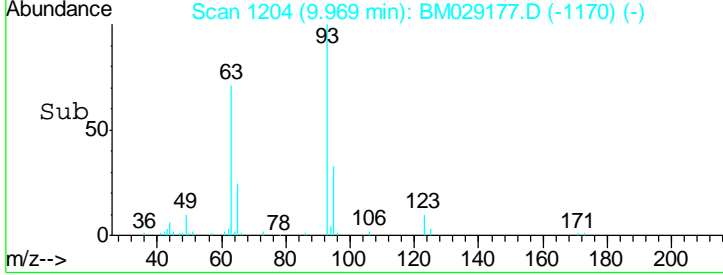
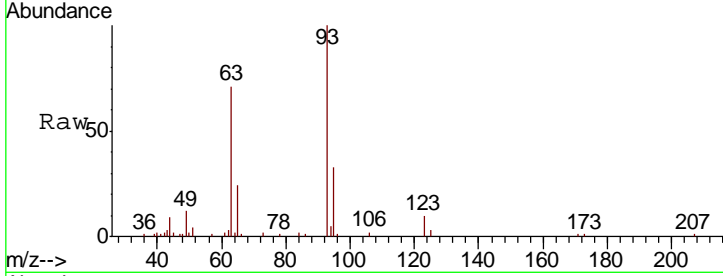
#27
 Bis(2-Chloroethoxy)methane
 Concen: 4.705 ng/ul
 RT: 9.97 min Scan# 1204
 Delta R.T. -0.00 min
 Lab File: BM029177.D
 Acq: 22 Mar 2021 14:12

Instrument :
 BNA_M
ClientSampled :
 MDL-WATER-QT2-2021-04

Tgt Ion	Resp	Lower	Upper
93	35601		
93	100		
95	33.0	25.6	38.4
123	10.3	9.0	13.4

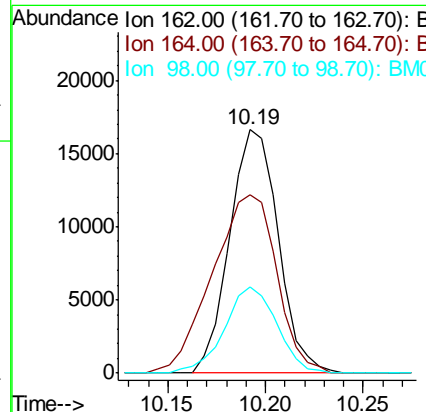
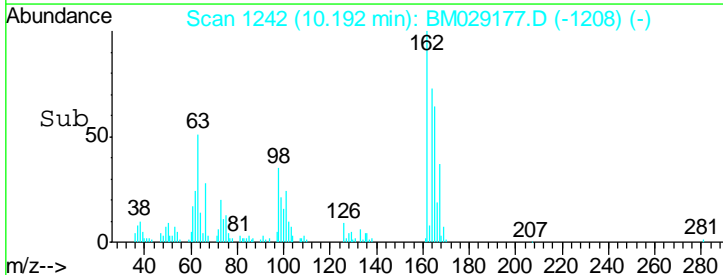
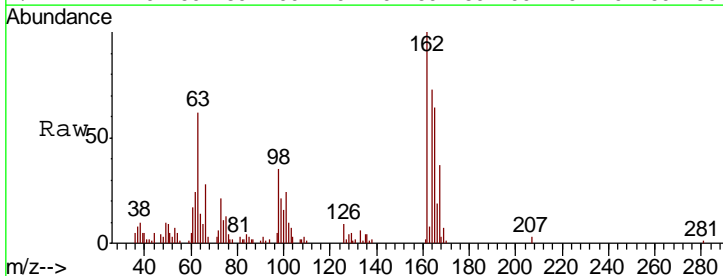
Manual Integrations
APPROVED

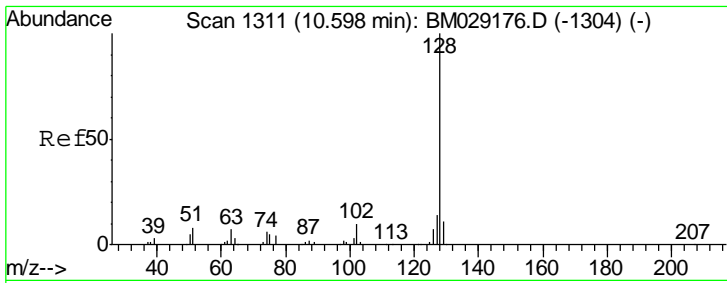
mohammad
 3/23/2021 11:23:16 AM



#29
 2,4-Dichlorophenol
 Concen: 4.668 ng/ul
 RT: 10.19 min Scan# 1242
 Delta R.T. -0.00 min
 Lab File: BM029177.D
 Acq: 22 Mar 2021 14:12

Tgt Ion	Resp	Lower	Upper
162	28701		
162	100		
164	73.3	51.8	77.6
98	35.5	27.2	40.8





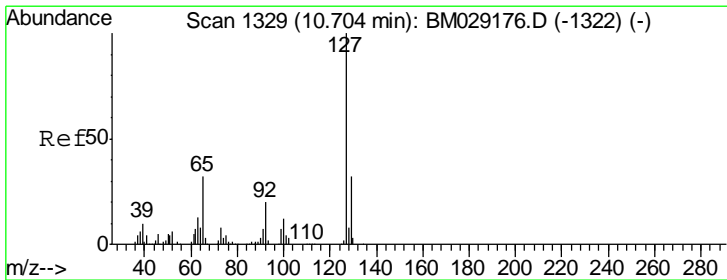
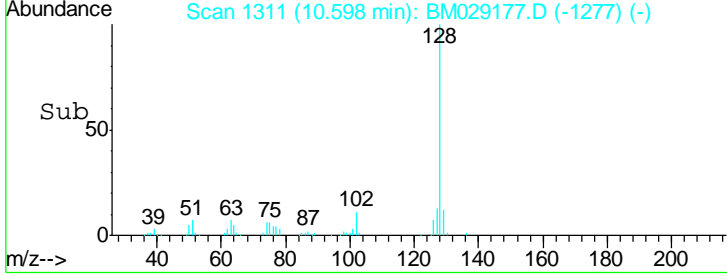
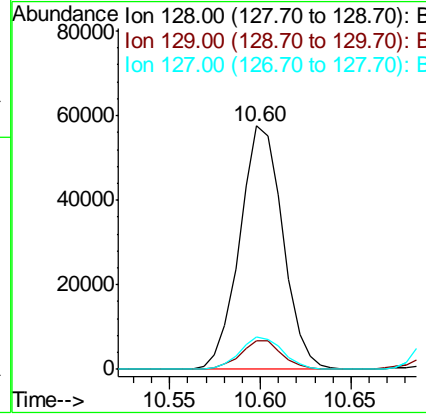
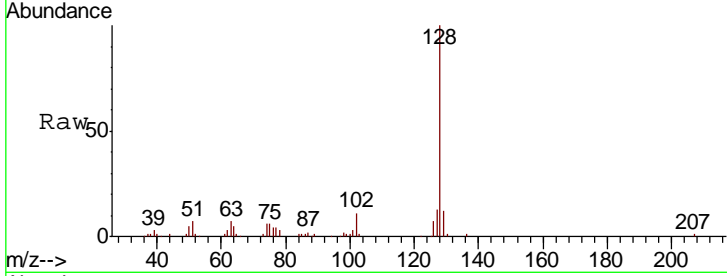
#30
 Naphthalene
 Concen: 4.579 ng/ul
 RT: 10.60 min Scan# 1311
 Delta R.T. -0.00 min
 Lab File: BM029177.D
 Acq: 22 Mar 2021 14:12

Instrument :
 BNA_M
ClientSampled :
 MDL-WATER-QT2-2021-04

Tgt Ion	Resp	Lower	Upper
128	100		
129	11.6	8.6	13.0
127	13.1	10.7	16.1

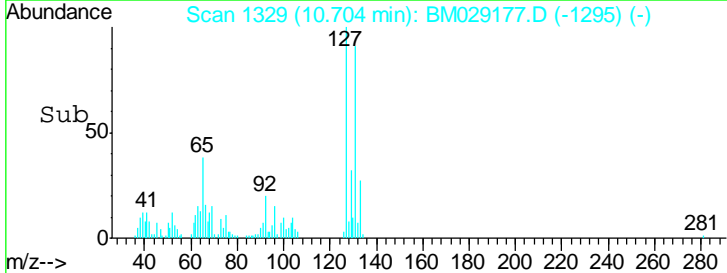
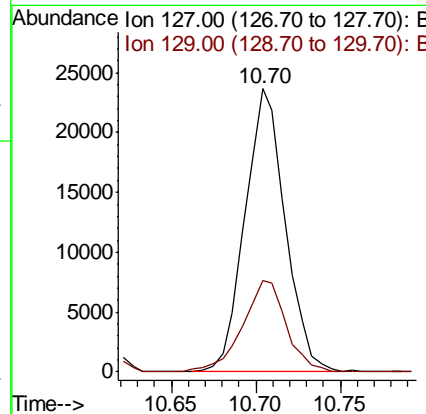
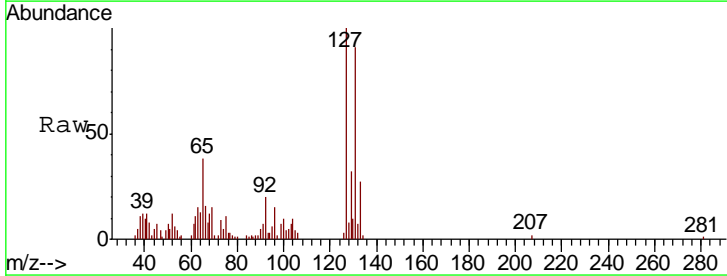
Manual Integrations
APPROVED

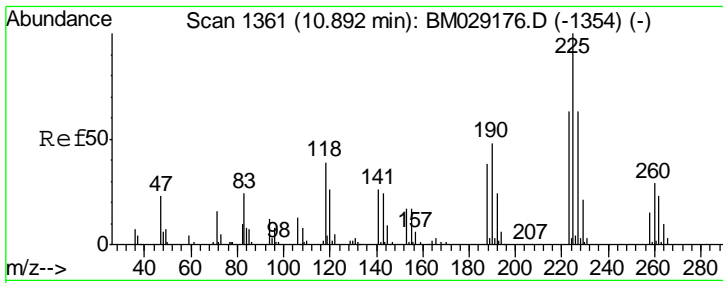
mohammad
 3/23/2021 11:23:16 AM



#32
 4-Chloroaniline
 Concen: 4.488 ng/ul
 RT: 10.70 min Scan# 1329
 Delta R.T. -0.00 min
 Lab File: BM029177.D
 Acq: 22 Mar 2021 14:12

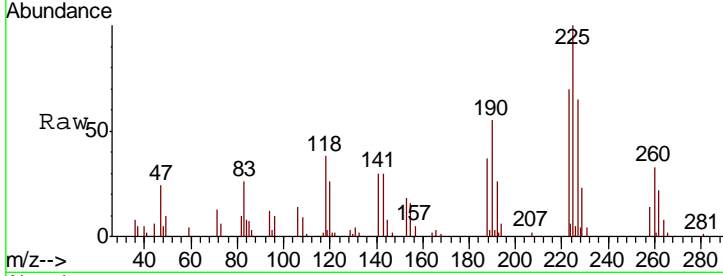
Tgt Ion	Resp	Lower	Upper
127	100		
129	32.1	26.6	39.8





#33
 Hexachlorobutadiene
 Concen: 4.104 ng/ul
 RT: 10.89 min Scan# 1361
 Delta R.T. -0.00 min
 Lab File: BM029177.D
 Acq: 22 Mar 2021 14:12

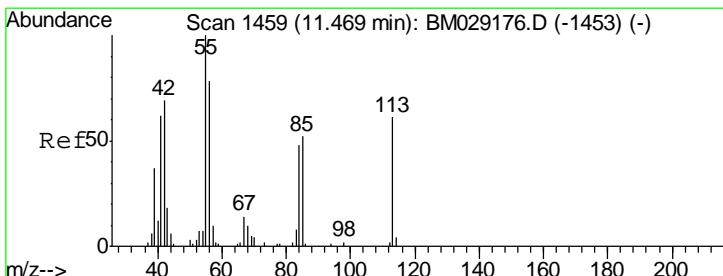
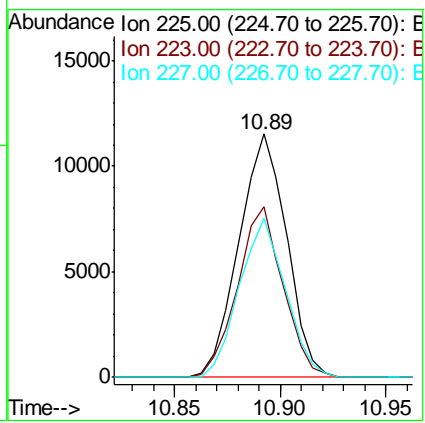
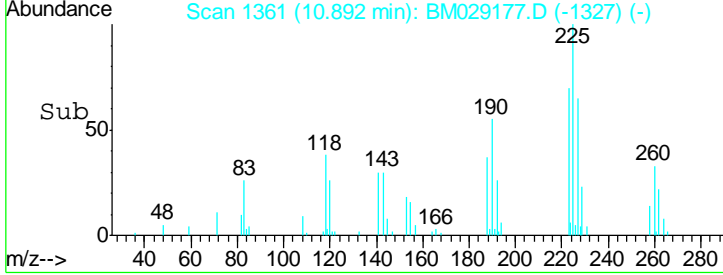
Instrument :
 BNA_M
ClientSampled :
 MDL-WATER-QT2-2021-04



Tgt Ion: 225 Resp: 18116

Ion	Ratio	Lower	Upper
225	100		
223	70.1	49.3	73.9
227	65.3	46.9	70.3

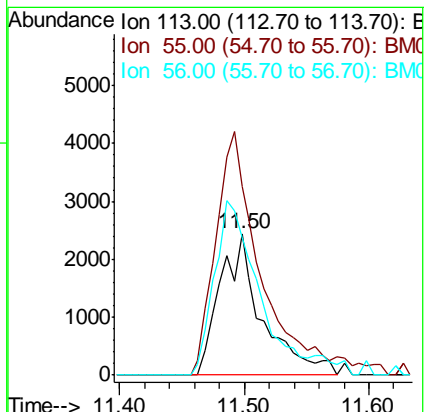
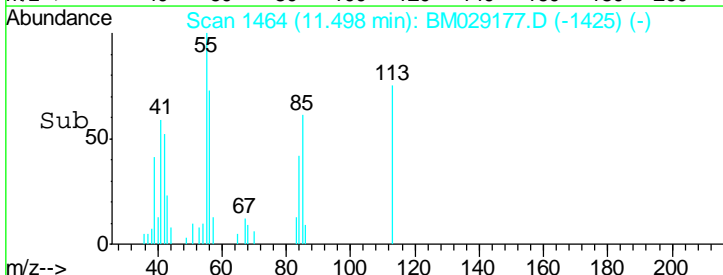
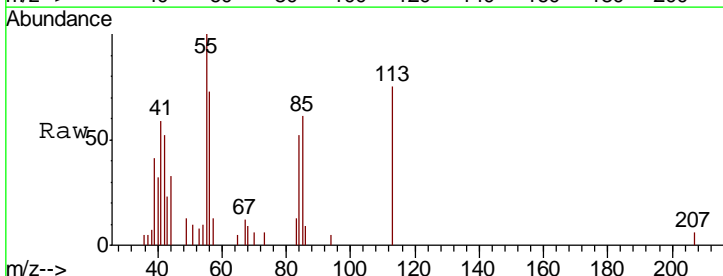
Manual Integrations
APPROVED
 mohammad
 3/23/2021 11:23:16 AM

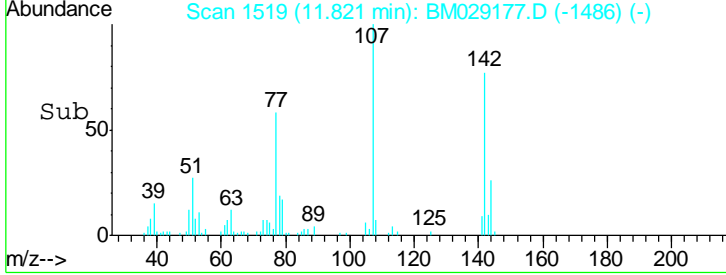
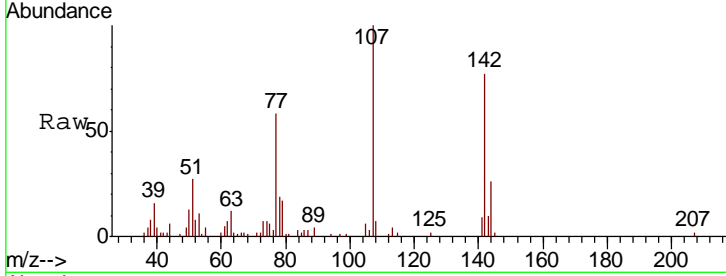
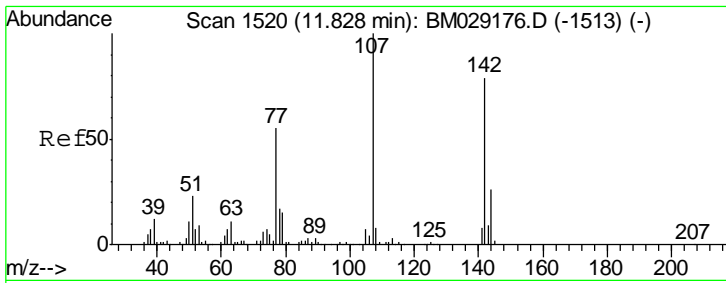


#34
 Caprolactam
 Concen: 3.672 ng/ul m
 RT: 11.50 min Scan# 1464
 Delta R.T. 0.03 min
 Lab File: BM029177.D
 Acq: 22 Mar 2021 14:12

Tgt Ion: 113 Resp: 5738

Ion	Ratio	Lower	Upper
113	100		
55	133.6	116.7	175.1
56	97.5	91.4	137.0



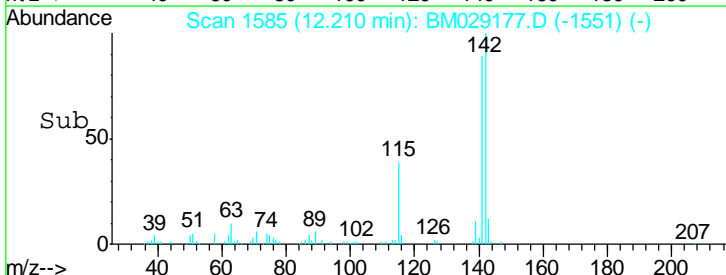
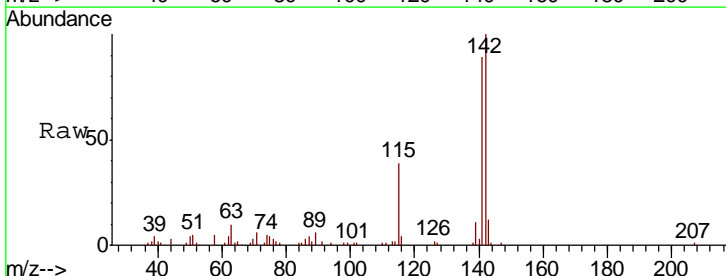
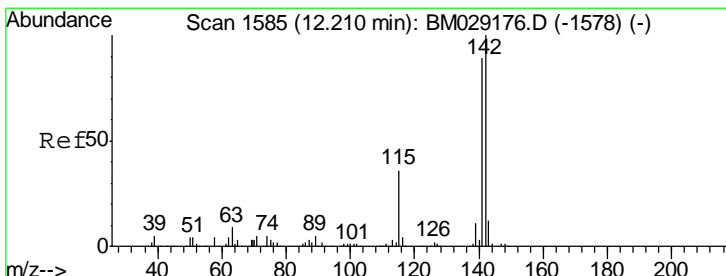
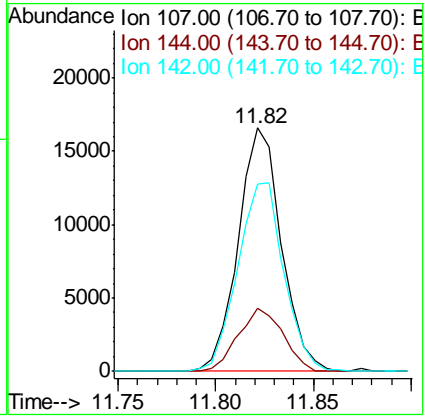


#35
 4-Chloro-3-methylphenol
 Concen: 4.265 ng/ul
 RT: 11.82 min Scan# 1519
 Delta R.T. -0.01 min
 Lab File: BM029177.D
 Acq: 22 Mar 2021 14:12

Tgt Ion	Resp	Lower	Upper
107	25473		
107	100		
144	26.0	22.4	33.6
142	76.9	66.0	99.0

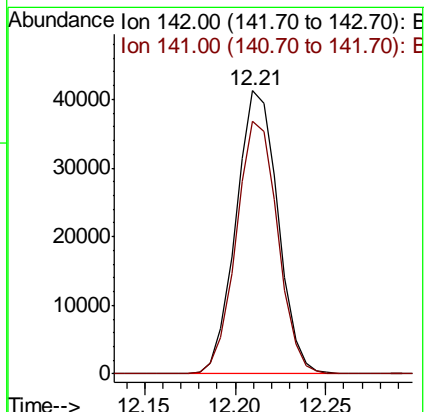
Instrument :
 BNA_M
 Client Sampled :
 MDL-WATER-QT2-2021-04

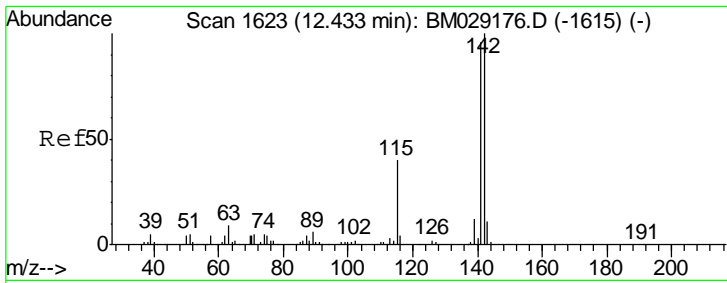
Manual Integrations
APPROVED
 mohammad
 3/23/2021 11:23:16 AM



#36
 2-Methylnaphthalene
 Concen: 4.525 ng/ul
 RT: 12.21 min Scan# 1585
 Delta R.T. -0.00 min
 Lab File: BM029177.D
 Acq: 22 Mar 2021 14:12

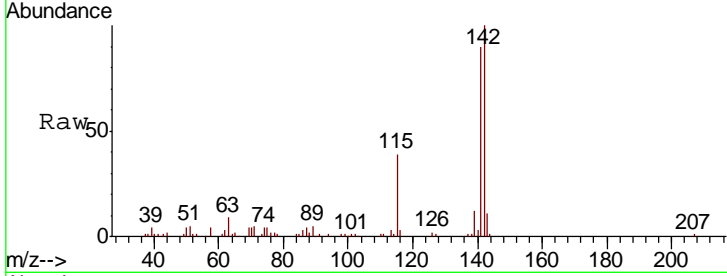
Tgt Ion	Resp	Lower	Upper
142	66207		
142	100		
141	89.2	69.8	104.8





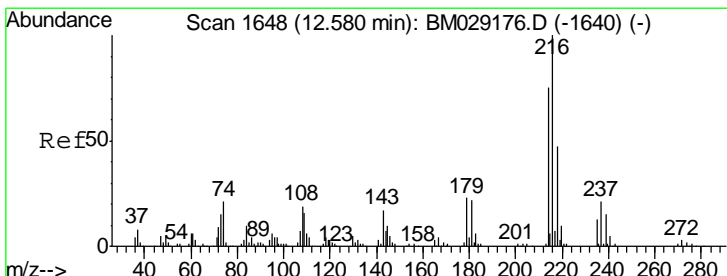
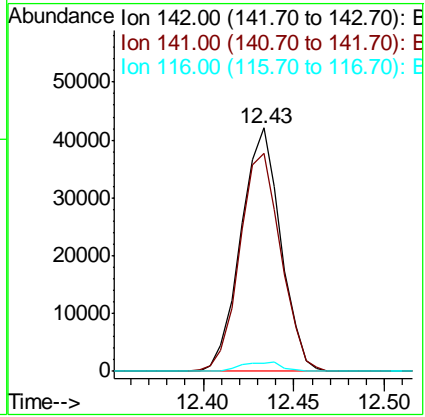
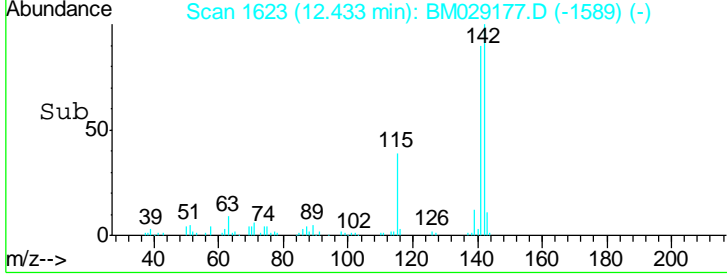
#37
 1-Methylnaphthalene
 Concen: 4.439 ng/ul
 RT: 12.43 min Scan# 1623
 Delta R.T. -0.00 min
 Lab File: BM029177.D
 Acq: 22 Mar 2021 14:12

Instrument :
 BNA_M
ClientSampled :
 MDL-WATER-QT2-2021-04

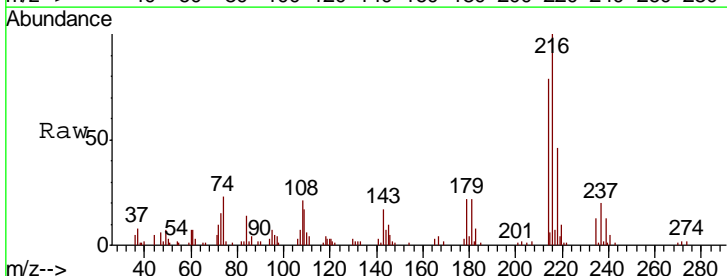


Tgt Ion	Resp	Lower	Upper
142	100		
141	89.6	74.0	111.0
116	3.4	3.1	4.7

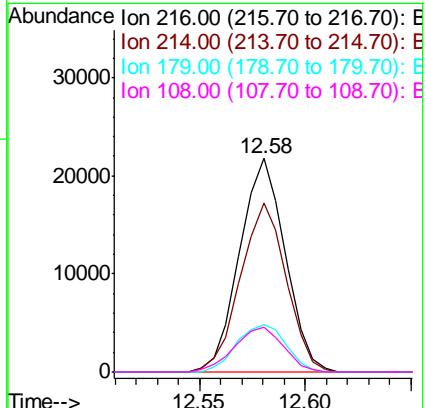
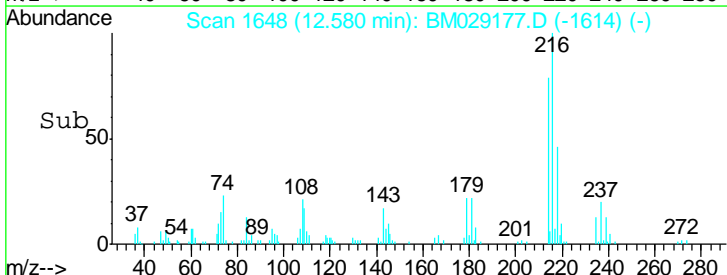
Manual Integrations
APPROVED
 mohammad
 3/23/2021 11:23:16 AM

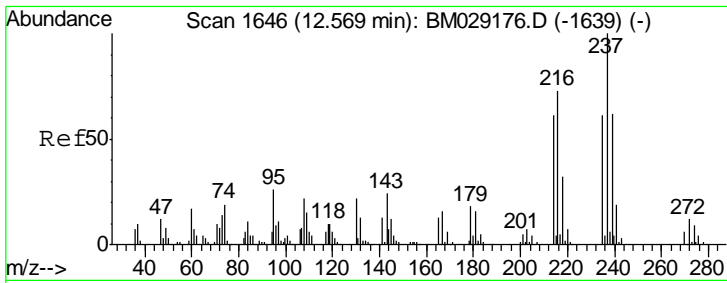


#39
 1,2,4,5-Tetrachlorobenzene
 Concen: 4.078 ng/ul
 RT: 12.58 min Scan# 1648
 Delta R.T. -0.00 min
 Lab File: BM029177.D
 Acq: 22 Mar 2021 14:12



Tgt Ion	Resp	Lower	Upper
216	100		
214	79.1	63.1	94.7
179	21.9	16.9	25.3
108	21.2	14.2	21.2#





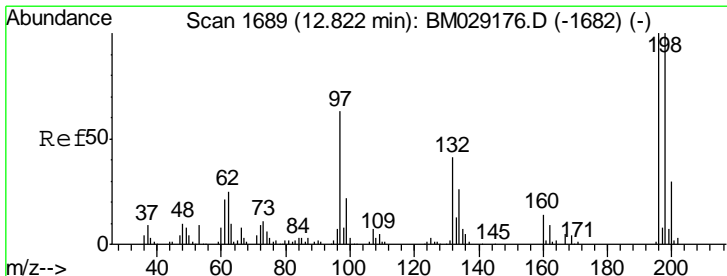
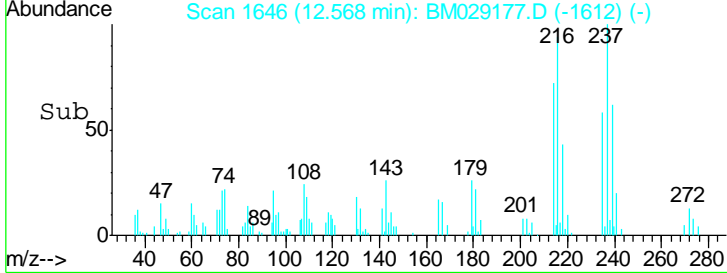
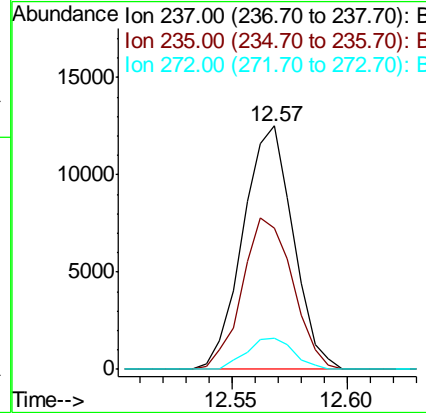
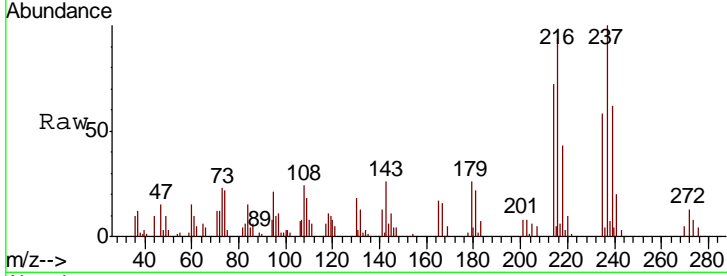
#40
 Hexachlorocyclopentadiene
 Concen: 3.603 ng/ul
 RT: 12.57 min Scan# 1646
 Delta R.T. -0.00 min
 Lab File: BM029177.D
 Acq: 22 Mar 2021 14:12

Instrument :
 BNA_M
ClientSampled :
 MDL-WATER-QT2-2021-04

Tgt Ion	Resp	Lower	Upper
237	18933		
237	100		
235	58.0	52.2	78.2
272	12.6	11.0	16.6

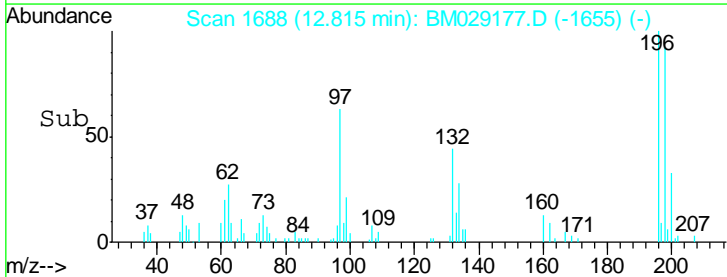
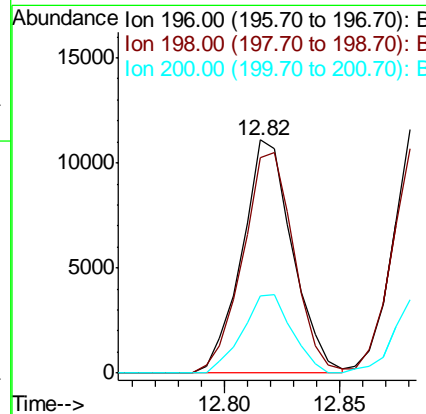
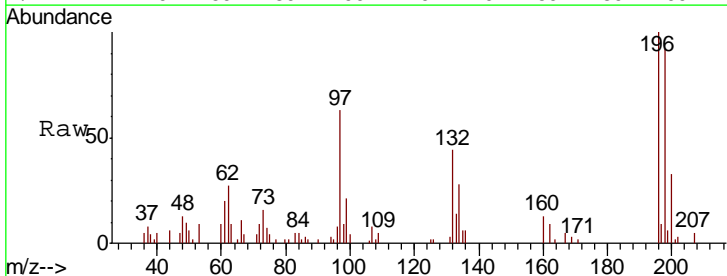
Manual Integrations
APPROVED

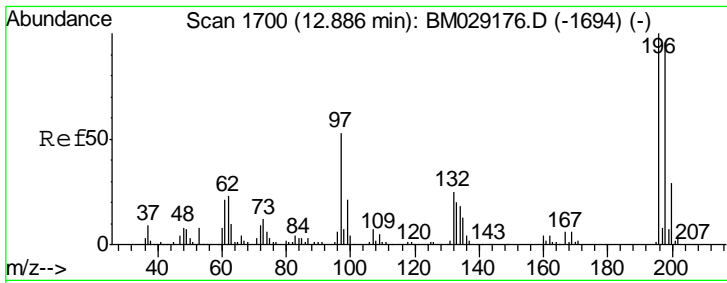
mohammad
 3/23/2021 11:23:16 AM



#41
 2,4,6-Trichlorophenol
 Concen: 3.850 ng/ul
 RT: 12.82 min Scan# 1688
 Delta R.T. -0.01 min
 Lab File: BM029177.D
 Acq: 22 Mar 2021 14:12

Tgt Ion	Resp	Lower	Upper
196	16936		
196	100		
198	92.3	73.2	109.8
200	32.9	23.1	34.7





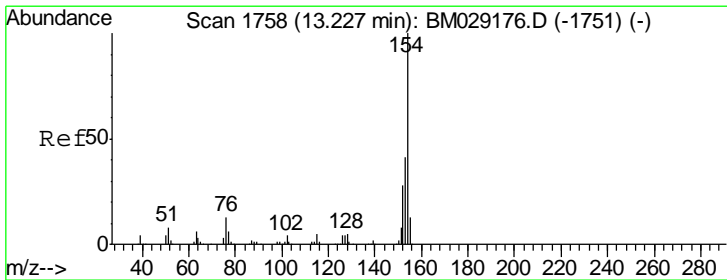
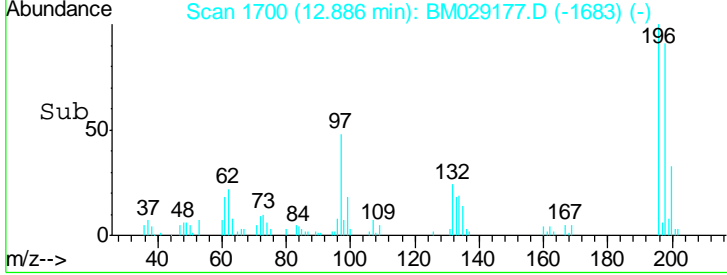
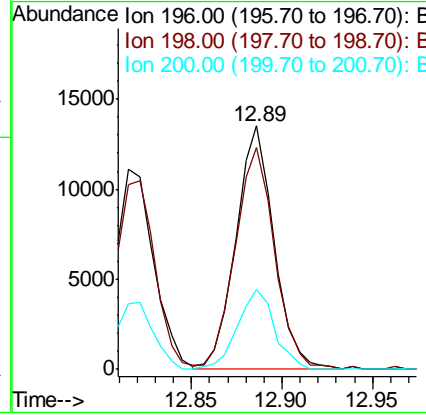
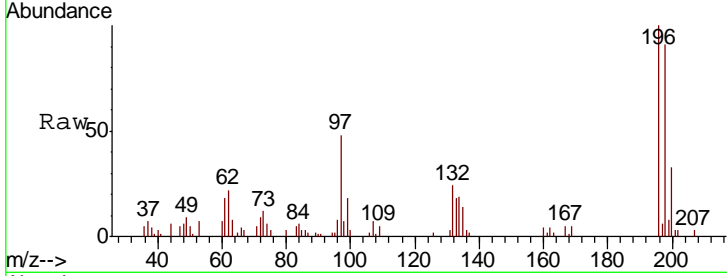
#42
 2,4,5-Trichlorophenol
 Concen: 4.223 ng/ul
 RT: 12.89 min Scan# 1700
 Delta R.T. -0.00 min
 Lab File: BM029177.D
 Acq: 22 Mar 2021 14:12

Instrument :
 BNA_M
ClientSampled :
 MDL-WATER-QT2-2021-04

Tgt Ion	Resp	Lower	Upper
196	19782		
198	91.4	78.8	118.2
200	33.0	25.8	38.8

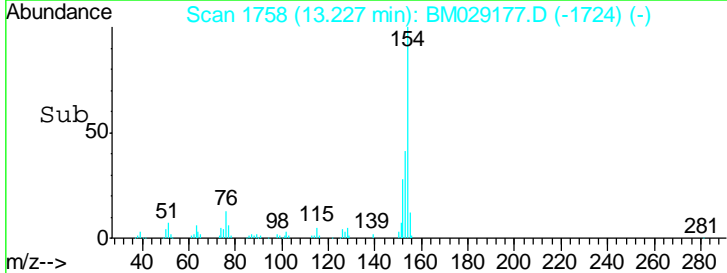
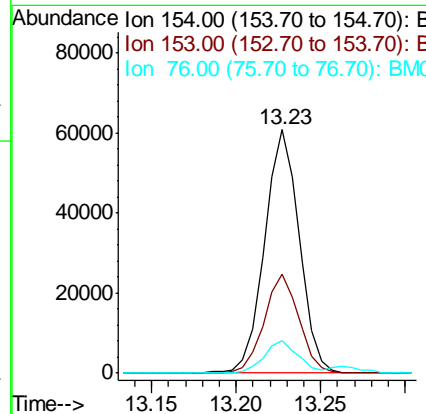
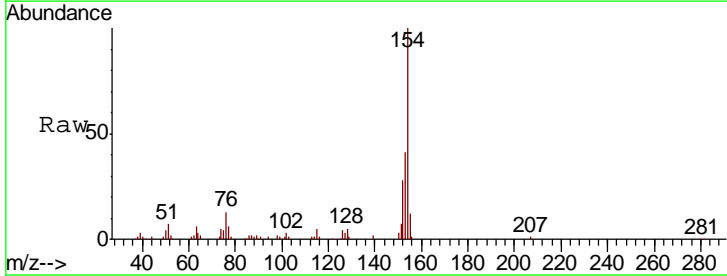
Manual Integrations
APPROVED

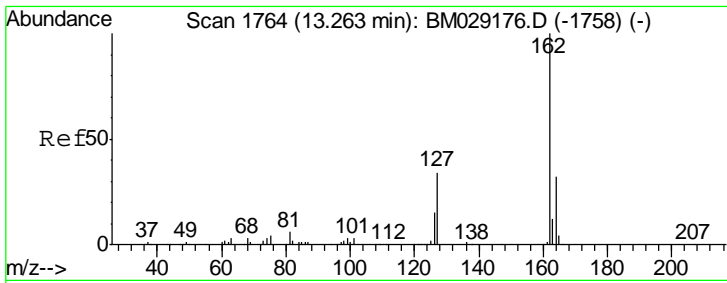
mohammad
 3/23/2021 11:23:16 AM



#43
 1,1'-Biphenyl
 Concen: 4.587 ng/ul
 RT: 13.23 min Scan# 1758
 Delta R.T. -0.00 min
 Lab File: BM029177.D
 Acq: 22 Mar 2021 14:12

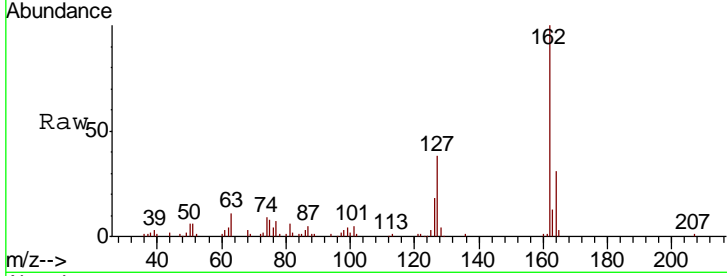
Tgt Ion	Resp	Lower	Upper
154	86456		
153	40.8	31.9	47.9
76	13.2	9.4	14.0





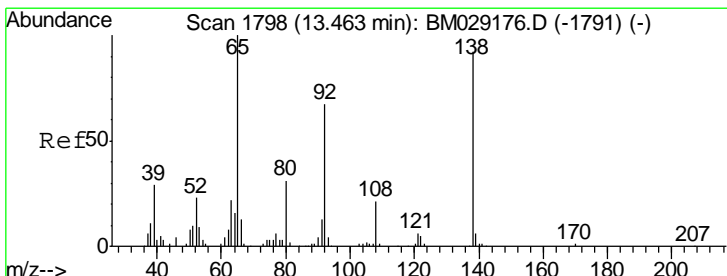
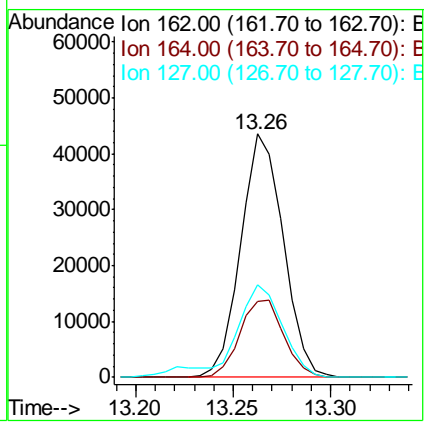
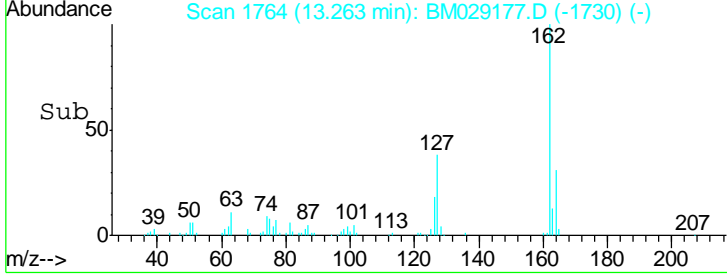
#44
 2-Chloronaphthalene
 Concen: 4.421 ng/ul
 RT: 13.26 min Scan# 1764
 Delta R.T. -0.00 min
 Lab File: BM029177.D
 Acq: 22 Mar 2021 14:12

Instrument : BNA_M
 ClientSampled : MDL-WATER-QT2-2021-04

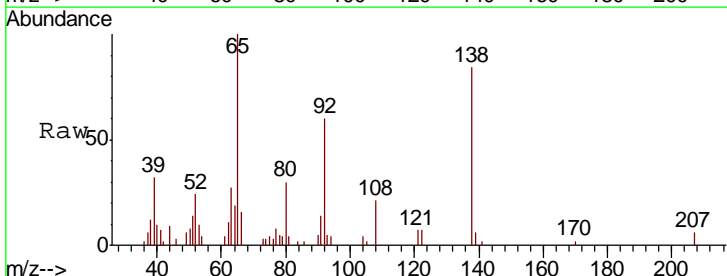


Tgt Ion	Resp	Lower	Upper
162	100		
164	31.1	25.9	38.9
127	38.0	29.5	44.3

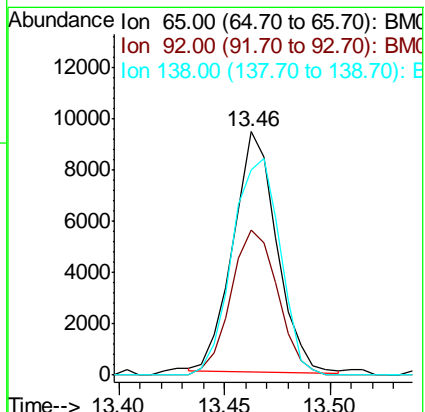
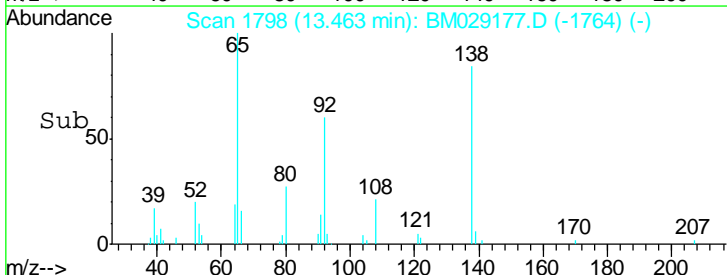
Manual Integrations
APPROVED
 mohammad
 3/23/2021 11:23:16 AM

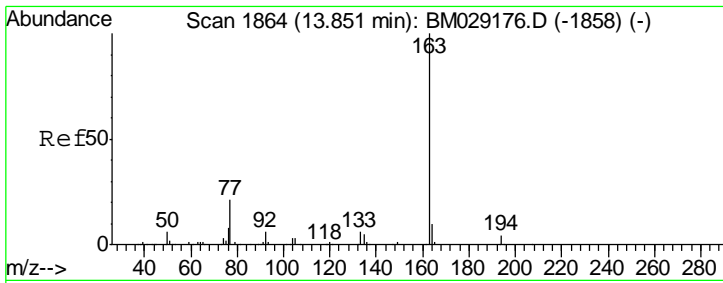


#45
 2-Nitroaniline
 Concen: 4.238 ng/ul
 RT: 13.46 min Scan# 1798
 Delta R.T. -0.00 min
 Lab File: BM029177.D
 Acq: 22 Mar 2021 14:12



Tgt Ion	Resp	Lower	Upper
65	100		
92	59.6	51.2	76.8
138	84.4	77.0	115.4



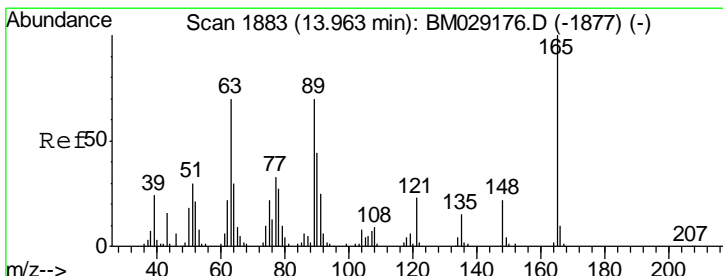
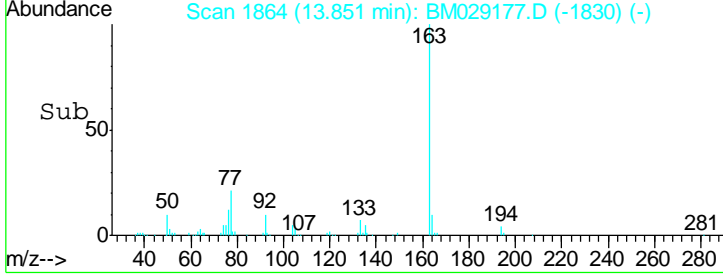
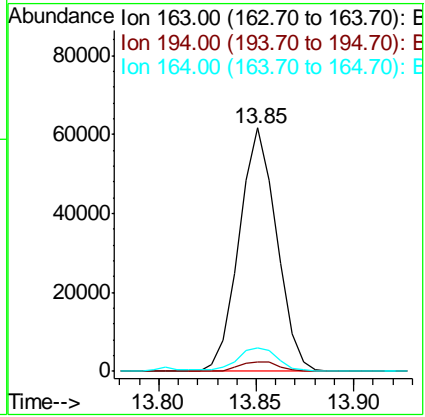
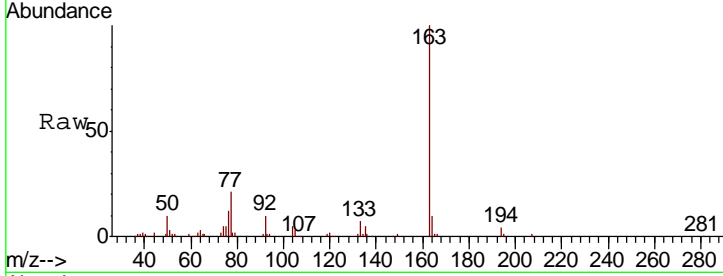


#47
 Dimethylphthalate
 Concen: 4.600 ng/ul
 RT: 13.85 min Scan# 1864
 Delta R.T. -0.00 min
 Lab File: BM029177.D
 Acq: 22 Mar 2021 14:12

Instrument :
 BNA_M
ClientSampled :
 MDL-WATER-QT2-2021-04

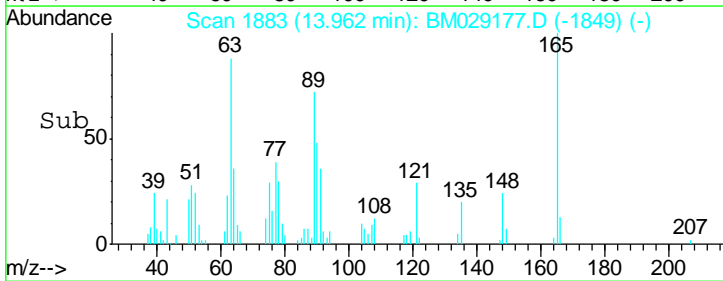
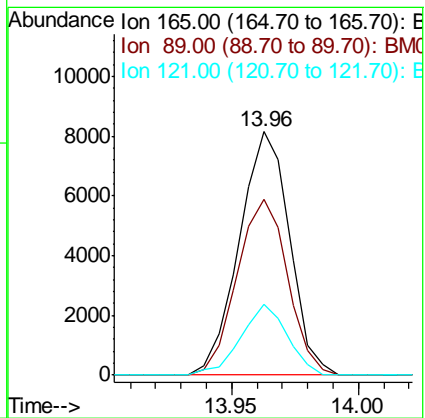
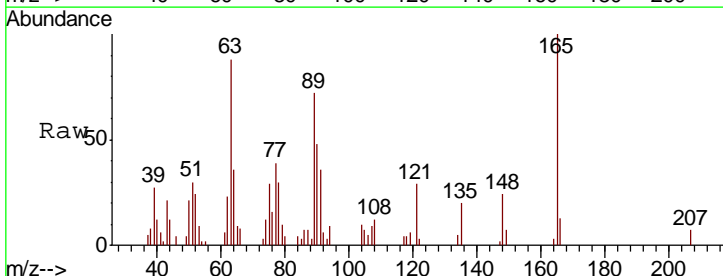
Tgt Ion	Resp	Lower	Upper
163	100		
194	3.6	2.9	4.3
164	9.6	7.4	11.2

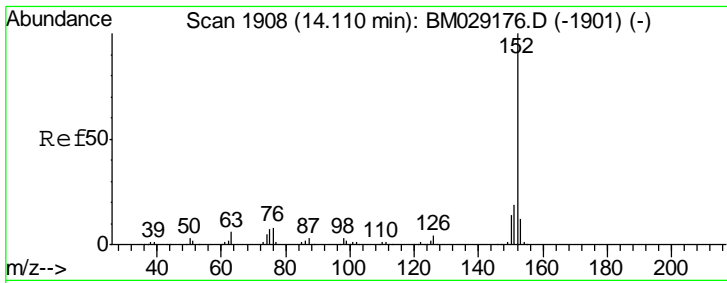
Manual Integrations
APPROVED
 mohammad
 3/23/2021 11:23:16 AM



#48
 2,6-Dinitrotoluene
 Concen: 4.054 ng/ul
 RT: 13.96 min Scan# 1883
 Delta R.T. -0.00 min
 Lab File: BM029177.D
 Acq: 22 Mar 2021 14:12

Tgt Ion	Resp	Lower	Upper
165	100		
89	72.2	50.6	75.8
121	29.2	18.7	28.1#





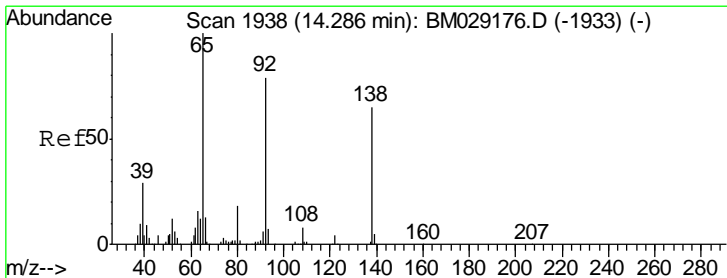
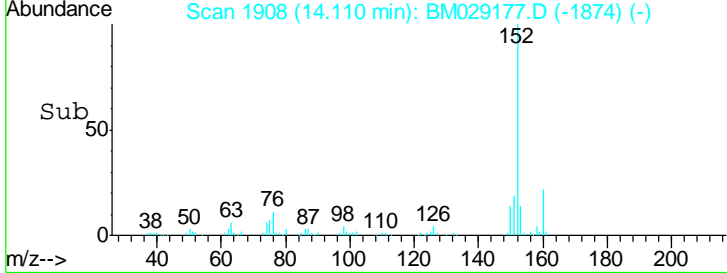
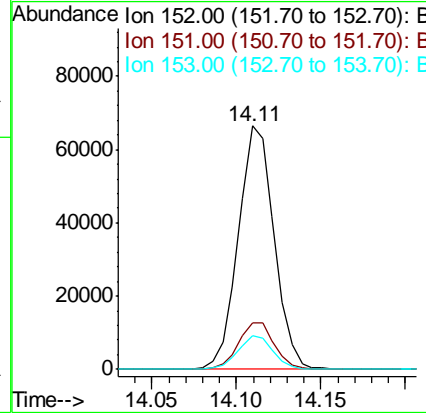
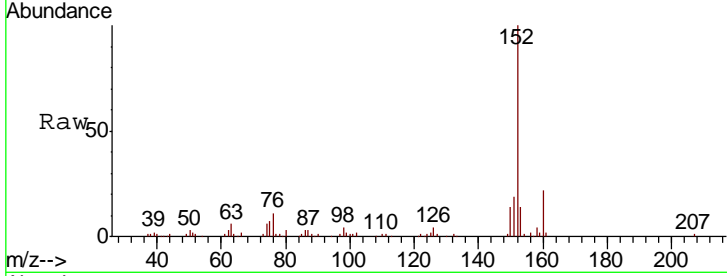
#50
 Acenaphthylene
 Concen: 4.598 ng/ul
 RT: 14.11 min Scan# 1908
 Delta R.T. -0.00 min
 Lab File: BM029177.D
 Acq: 22 Mar 2021 14:12

Instrument :
 BNA_M
ClientSampled :
 MDL-WATER-QT2-2021-04

Tgt Ion	Resp	Lower	Upper
152	100		
151	19.1	16.2	24.2
153	13.6	10.6	16.0

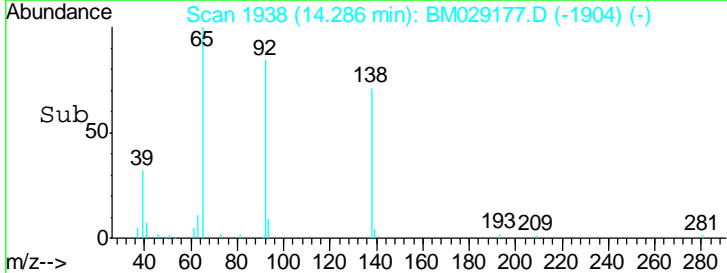
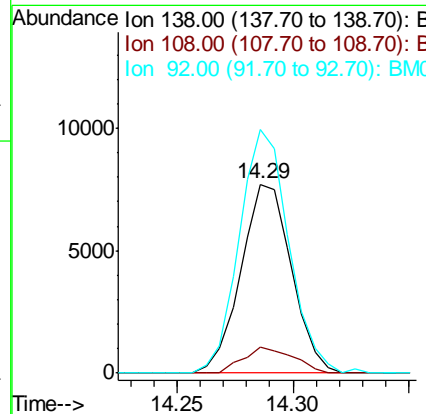
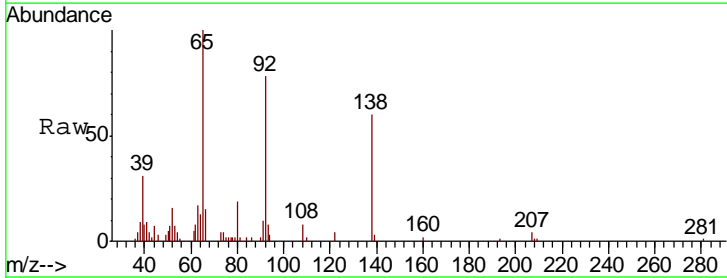
Manual Integrations
APPROVED

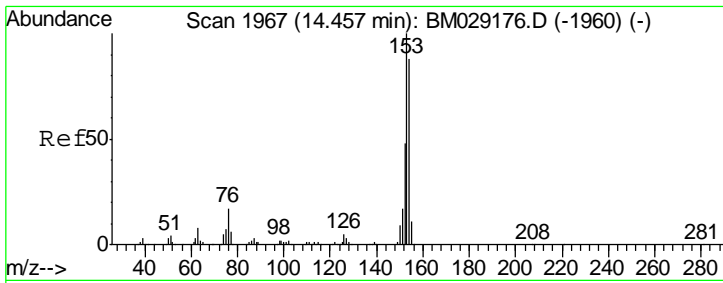
mohammad
 3/23/2021 11:23:16 AM



#51
 3-Nitroaniline
 Concen: 3.835 ng/ul
 RT: 14.29 min Scan# 1938
 Delta R.T. -0.00 min
 Lab File: BM029177.D
 Acq: 22 Mar 2021 14:12

Tgt Ion	Resp	Lower	Upper
138	100		
108	13.7	14.0	21.0#
92	128.7	97.2	145.8





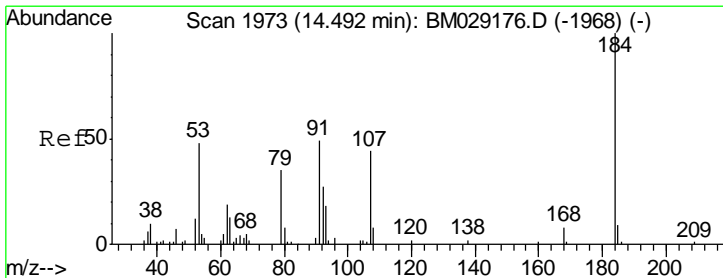
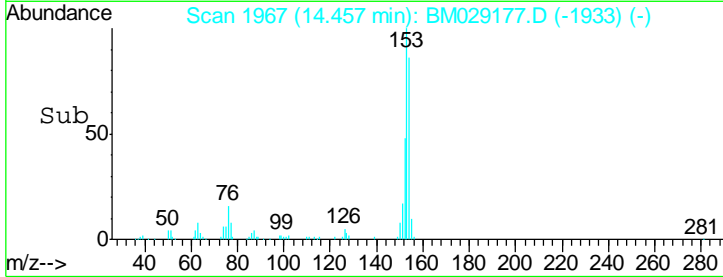
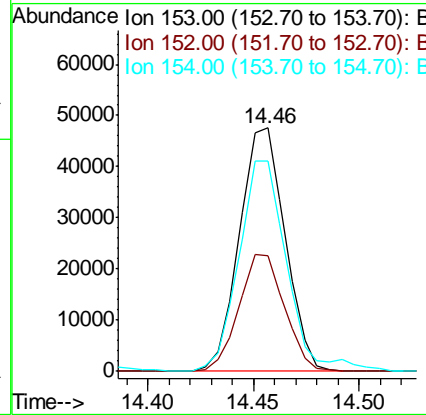
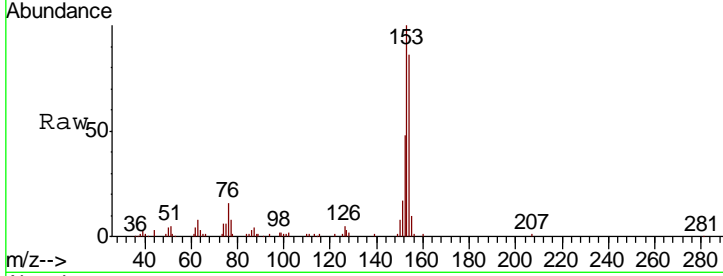
#52
 Acenaphthene
 Concen: 4.509 ng/ul
 RT: 14.46 min Scan# 1967
 Delta R.T. -0.00 min
 Lab File: BM029177.D
 Acq: 22 Mar 2021 14:12

Instrument :
 BNA_M
 ClientSampled :
 MDL-WATER-QT2-2021-04

Tgt Ion	Resp	Lower	Upper
153	100		
152	47.6	38.1	57.1
154	86.2	67.0	100.6

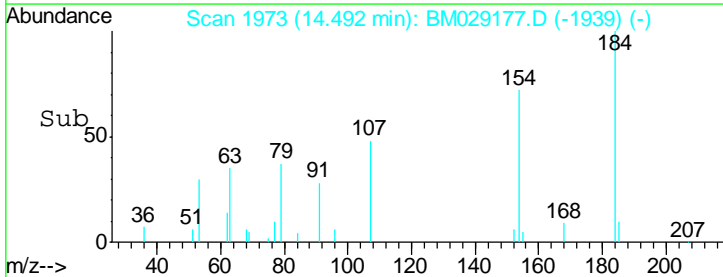
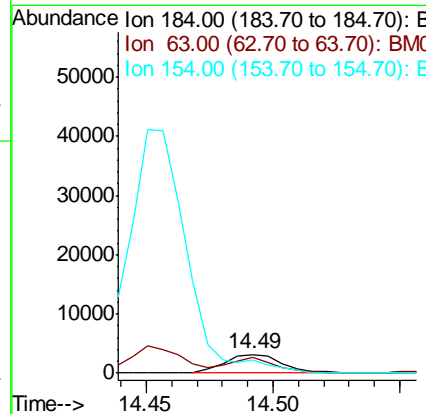
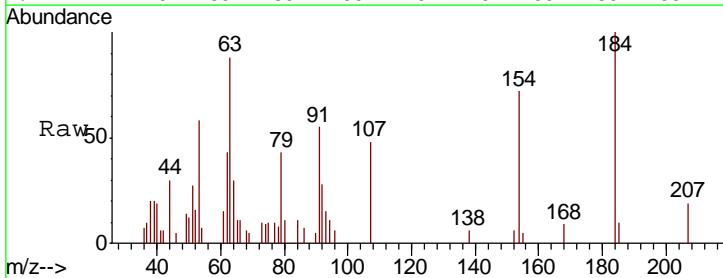
Manual Integrations
 APPROVED

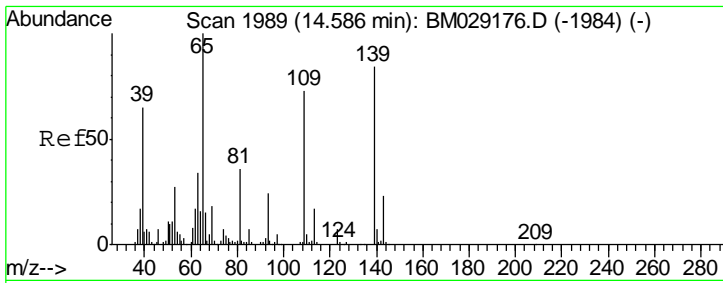
mohammad
 3/23/2021 11:23:16 AM



#53
 2,4-Dinitrophenol
 Concen: 3.330 ng/ul
 RT: 14.49 min Scan# 1973
 Delta R.T. -0.00 min
 Lab File: BM029177.D
 Acq: 22 Mar 2021 14:12

Tgt Ion	Resp	Lower	Upper
184	100		
63	88.3	49.3	73.9#
154	71.6	48.3	72.5





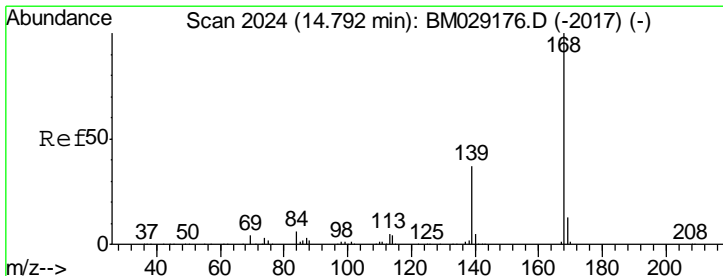
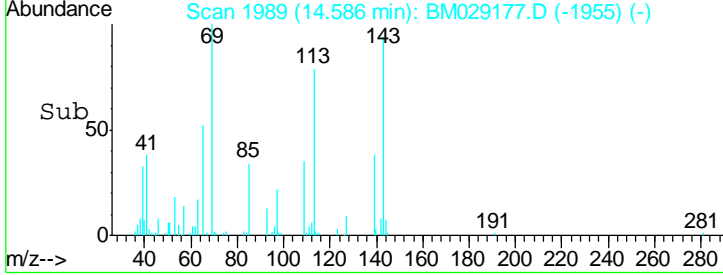
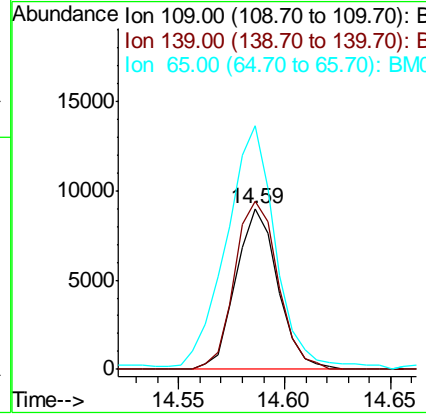
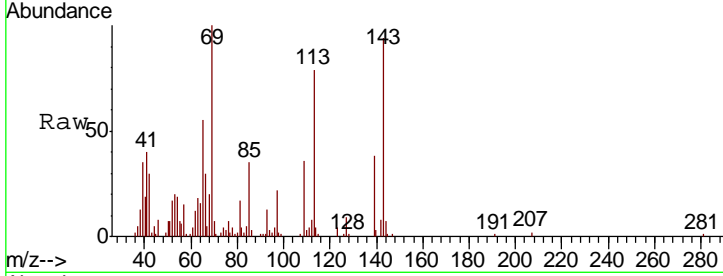
#55
 4-Nitrophenol
 Concen: 4.593 ng/ul
 RT: 14.59 min Scan# 1989
 Delta R.T. -0.00 min
 Lab File: BM029177.D
 Acq: 22 Mar 2021 14:12

Instrument :
 BNA_M
ClientSampled :
 MDL-WATER-QT2-2021-04

Tgt Ion	Resp	Lower	Upper
109	12428		
109	100		
139	104.9	94.2	141.4
65	151.7	105.9	158.9

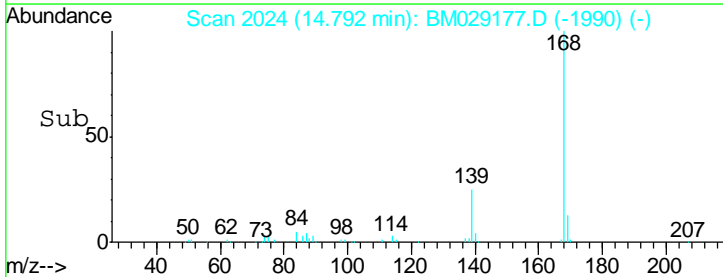
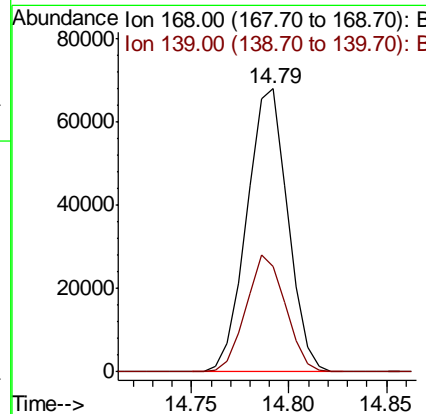
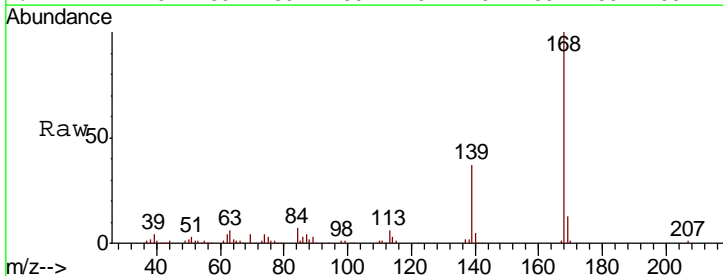
Manual Integrations
APPROVED

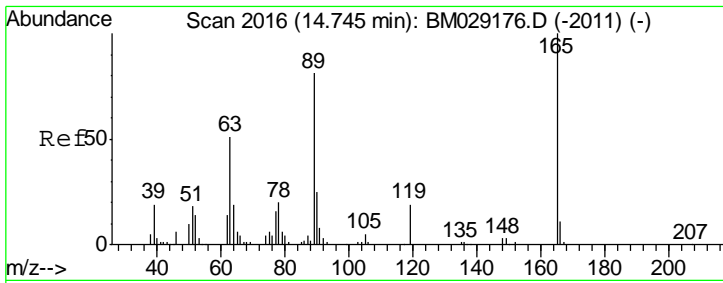
mohammad
 3/23/2021 11:23:16 AM



#56
 Dibenzofuran
 Concen: 4.496 ng/ul
 RT: 14.79 min Scan# 2024
 Delta R.T. -0.00 min
 Lab File: BM029177.D
 Acq: 22 Mar 2021 14:12

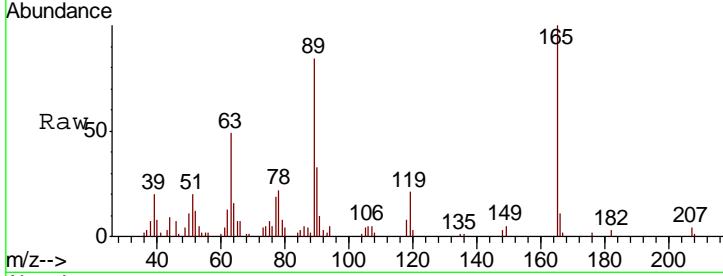
Tgt Ion	Resp	Lower	Upper
168	99062		
168	100		
139	37.1	31.0	46.6





#57
 2,4-Dinitrotoluene
 Concen: 4.481 ng/ul
 RT: 14.74 min Scan# 2016
 Delta R.T. -0.00 min
 Lab File: BM029177.D
 Acq: 22 Mar 2021 14:12

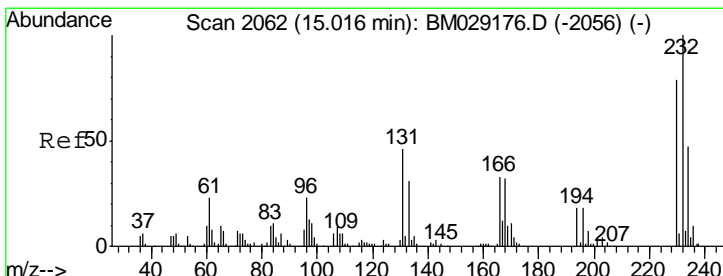
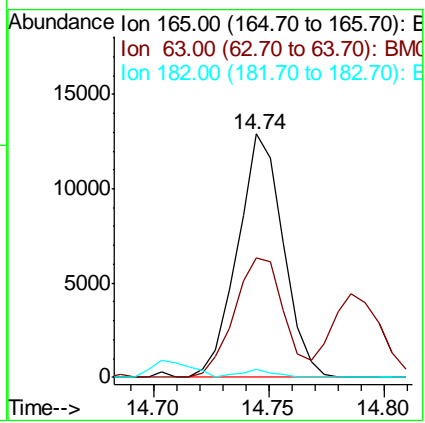
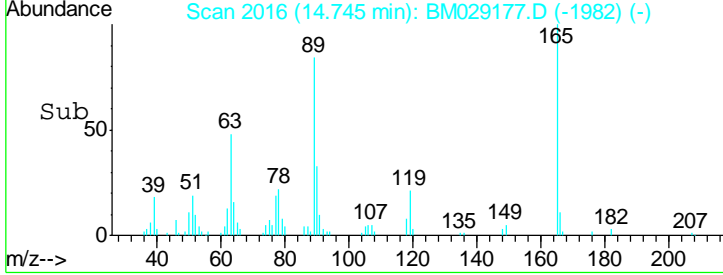
Instrument :
 BNA_M
ClientSampled :
 MDL-WATER-QT2-2021-04



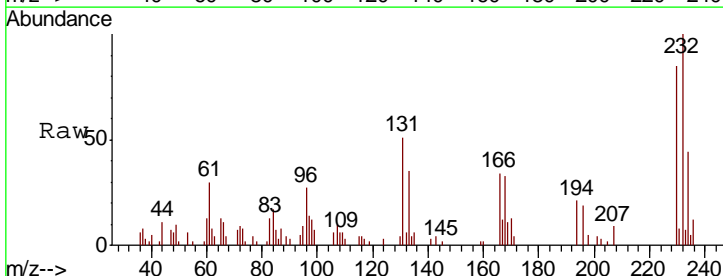
Tgt Ion: 165 Resp: 17787

Ion	Ratio	Lower	Upper
165	100		
63	48.9	41.0	61.4
182	3.3	2.6	3.8

Manual Integrations
APPROVED
 mohammad
 3/23/2021 11:23:16 AM

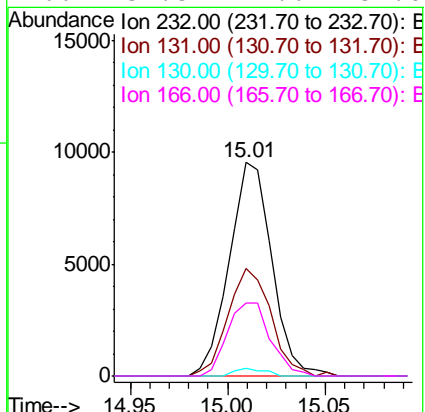
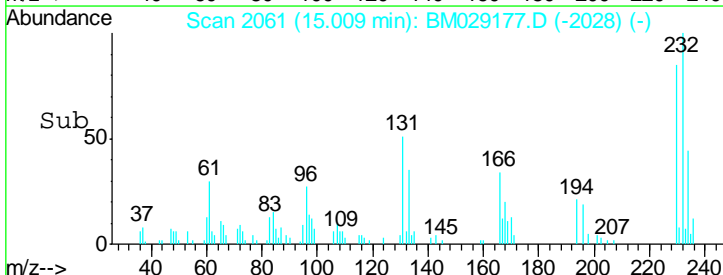


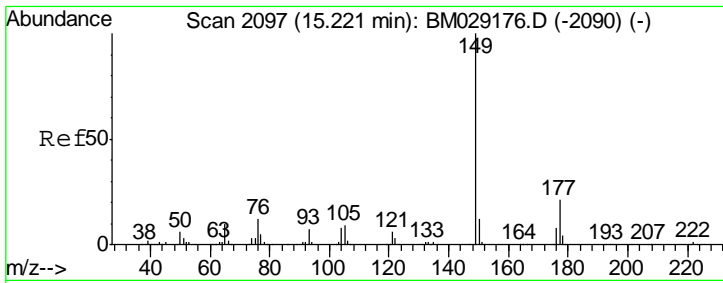
#58
 2,3,4,6-Tetrachlorophenol
 Concen: 3.848 ng/ul
 RT: 15.01 min Scan# 2061
 Delta R.T. -0.01 min
 Lab File: BM029177.D
 Acq: 22 Mar 2021 14:12



Tgt Ion: 232 Resp: 14444

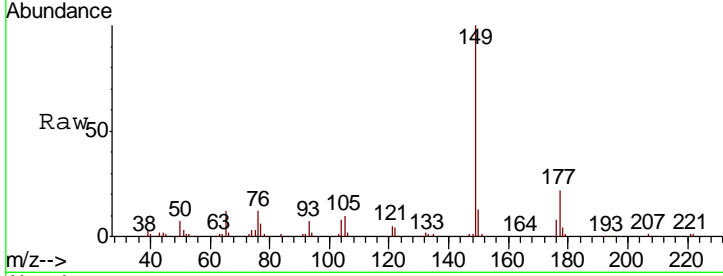
Ion	Ratio	Lower	Upper
232	100		
131	50.5	35.6	53.4
130	3.6	2.7	4.1
166	34.3	24.6	37.0





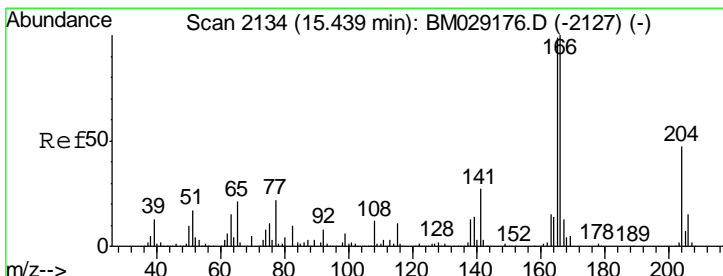
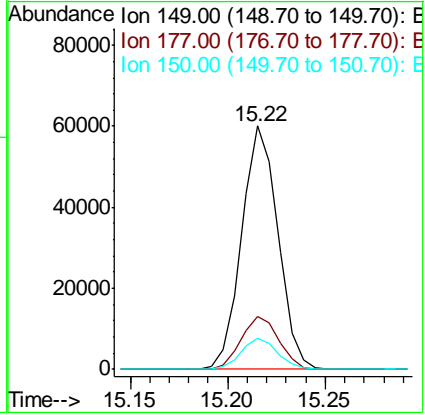
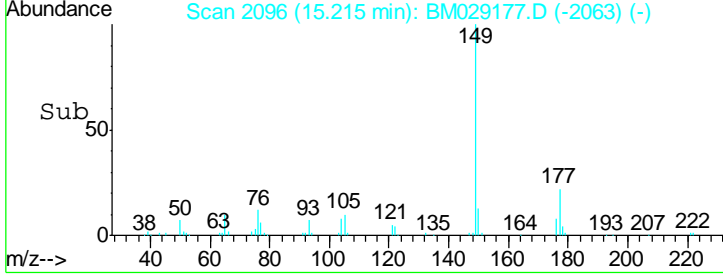
#59
 Diethylphthalate
 Concen: 4.405 ng/ul
 RT: 15.22 min Scan# 2096
 Delta R.T. -0.01 min
 Lab File: BM029177.D
 Acq: 22 Mar 2021 14:12

Instrument :
 BNA_M
ClientSampled :
 MDL-WATER-QT2-2021-04

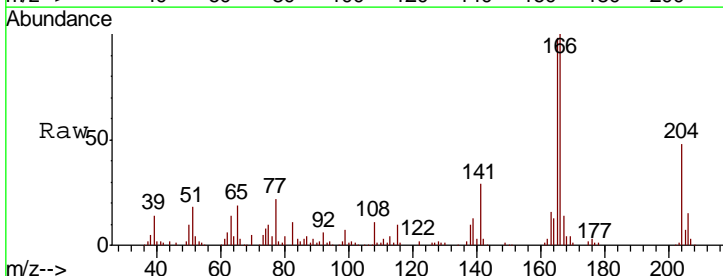


Tgt Ion	Resp	Lower	Upper
149	100		
177	21.6	17.2	25.8
150	13.0	10.2	15.4

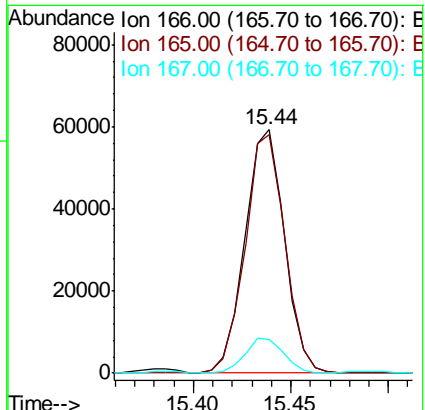
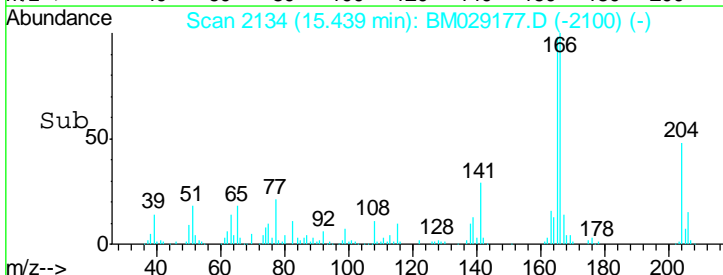
Manual Integrations
APPROVED
 mohammad
 3/23/2021 11:23:16 AM

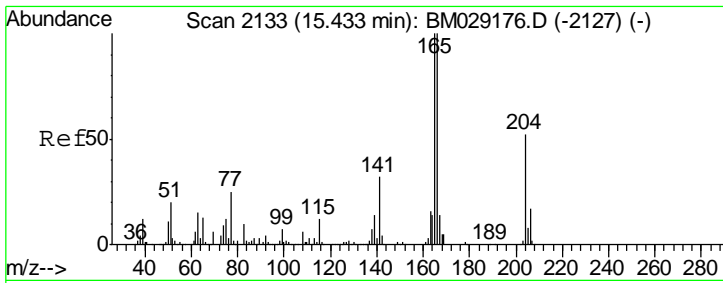


#61
 Fluorene
 Concen: 4.519 ng/ul
 RT: 15.44 min Scan# 2134
 Delta R.T. -0.00 min
 Lab File: BM029177.D
 Acq: 22 Mar 2021 14:12



Tgt Ion	Resp	Lower	Upper
166	100		
165	97.7	77.2	115.8
167	13.6	10.7	16.1





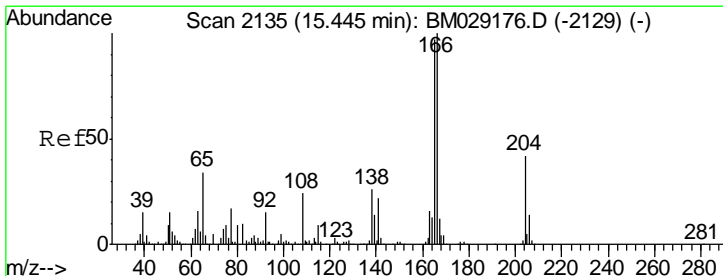
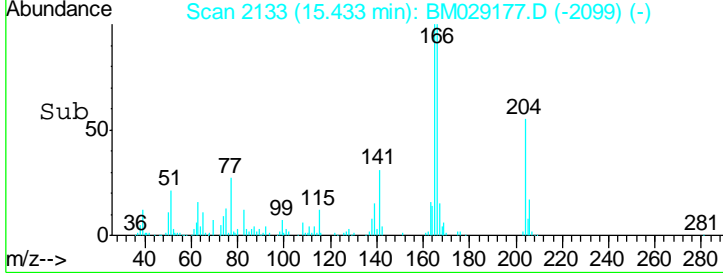
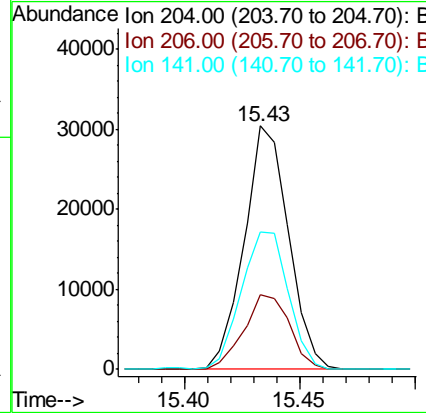
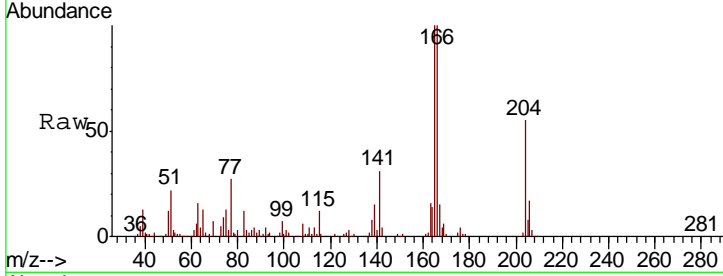
#62
 4-Chlorophenyl-phenylether
 Concen: 4.414 ng/ul
 RT: 15.43 min Scan# 2133
 Delta R.T. -0.00 min
 Lab File: BM029177.D
 Acq: 22 Mar 2021 14:12

Instrument :
 BNA_M
 ClientSampled :
 MDL-WATER-QT2-2021-04

Tgt Ion	Resp	Lower	Upper
204	40836		
204	100		
206	30.7	25.4	38.0
141	56.7	48.6	73.0

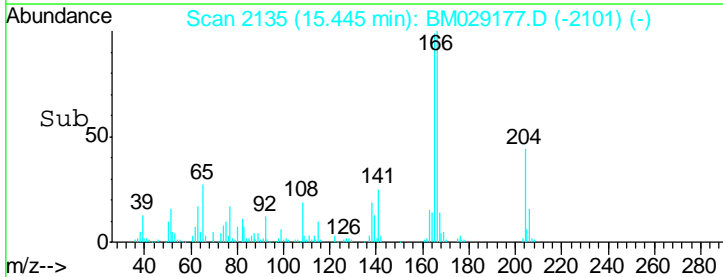
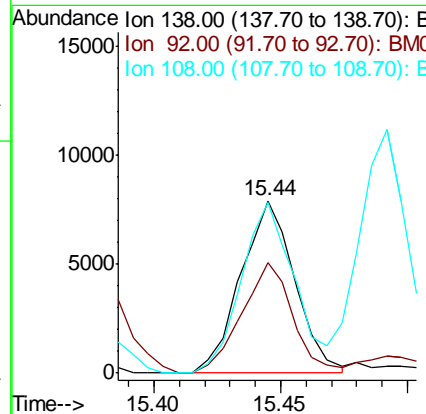
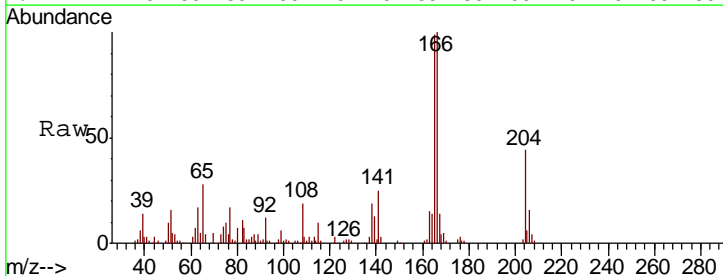
Manual Integrations
 APPROVED

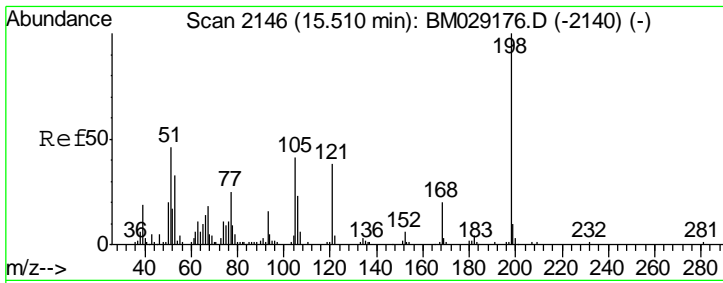
mohammad
 3/23/2021 11:23:16 AM



#63
 4-Nitroaniline
 Concen: 3.667 ng/ul
 RT: 15.44 min Scan# 2135
 Delta R.T. -0.00 min
 Lab File: BM029177.D
 Acq: 22 Mar 2021 14:12

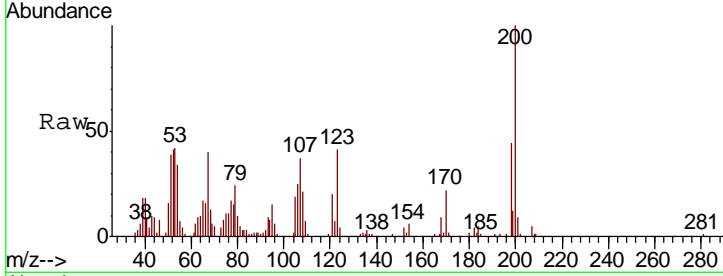
Tgt Ion	Resp	Lower	Upper
138	11773		
138	100		
92	63.8	43.4	65.0
108	98.7	73.1	109.7





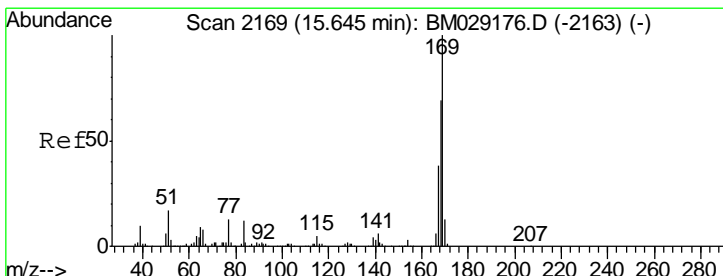
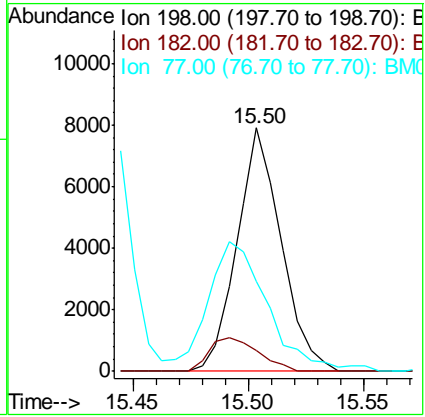
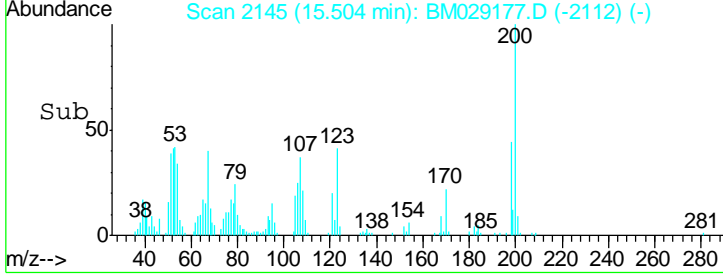
#66
 4,6-Dinitro-2-methylphenol
 Concen: 4.370 ng/ul
 RT: 15.50 min Scan# 2145
 Delta R.T. -0.01 min
 Lab File: BM029177.D
 Acq: 22 Mar 2021 14:12

Instrument :
 BNA_M
ClientSampled :
 MDL-WATER-QT2-2021-04



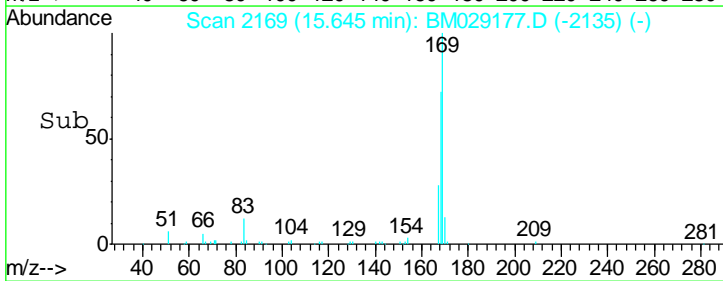
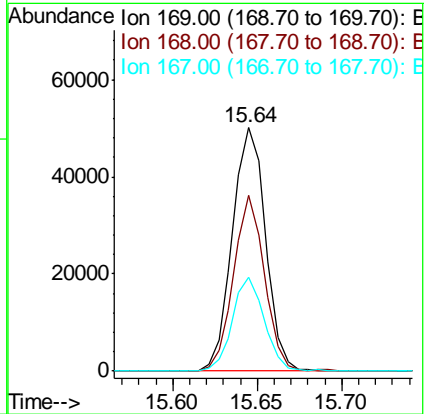
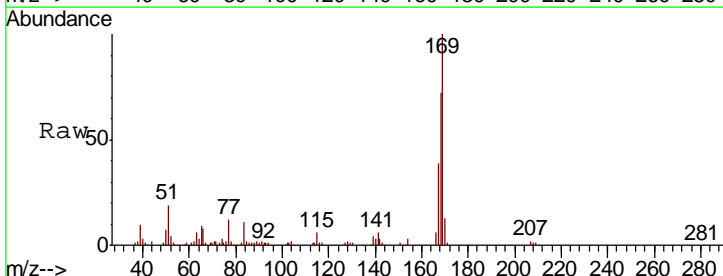
Tgt Ion	Resp	Lower	Upper
198	10536		
182	8.7	3.7	5.5#
77	37.2	23.0	34.4#

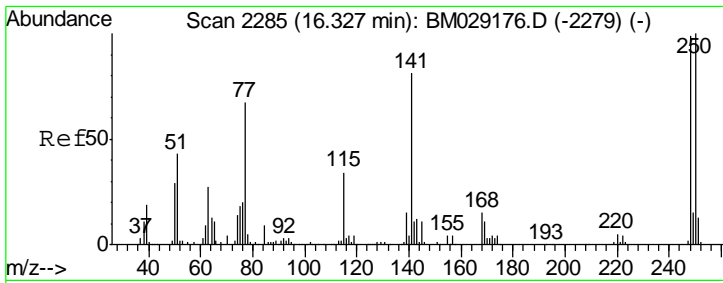
Manual Integrations
APPROVED
 mohammad
 3/23/2021 11:23:16 AM



#67
 N-Nitrosodiphenylamine
 Concen: 4.417 ng/ul
 RT: 15.64 min Scan# 2169
 Delta R.T. -0.00 min
 Lab File: BM029177.D
 Acq: 22 Mar 2021 14:12

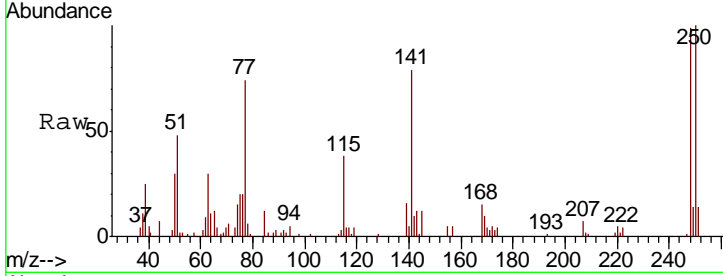
Tgt Ion	Resp	Lower	Upper
169	68600		
168	72.1	53.9	80.9
167	38.8	28.3	42.5





#68
 4-Bromophenyl-phenylether
 Concen: 4.199 ng/ul
 RT: 16.33 min Scan# 2285
 Delta R.T. -0.00 min
 Lab File: BM029177.D
 Acq: 22 Mar 2021 14:12

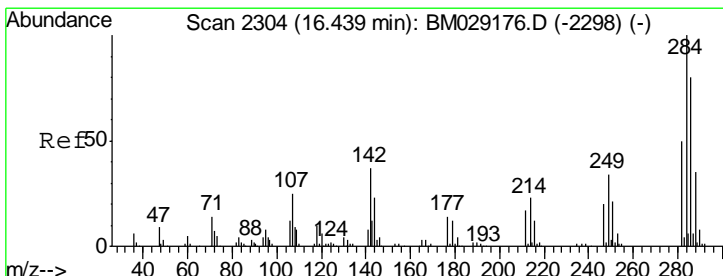
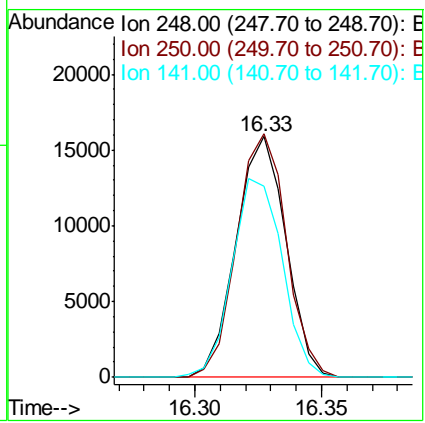
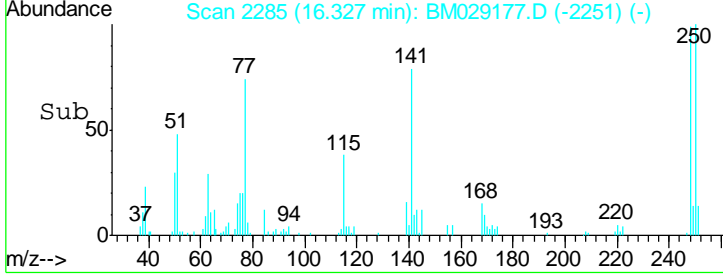
Instrument :
 BNA_M
ClientSampled :
 MDL-WATER-QT2-2021-04



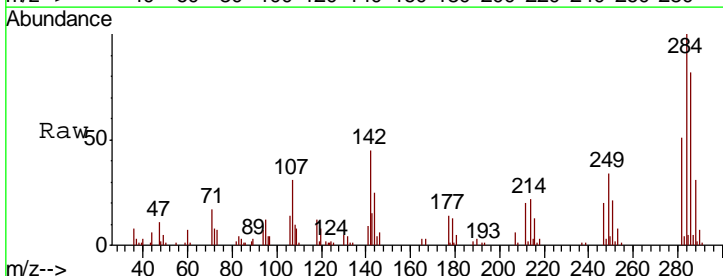
Tgt Ion: 248 Resp: 21722

Ion	Ratio	Lower	Upper
248	100		
250	101.2	75.2	112.8
141	79.5	59.0	88.6

Manual Integrations
APPROVED
 mohammad
 3/23/2021 11:23:16 AM

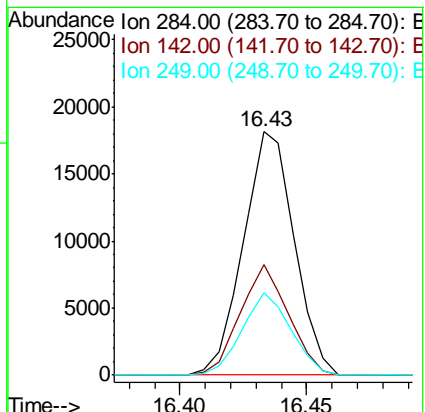
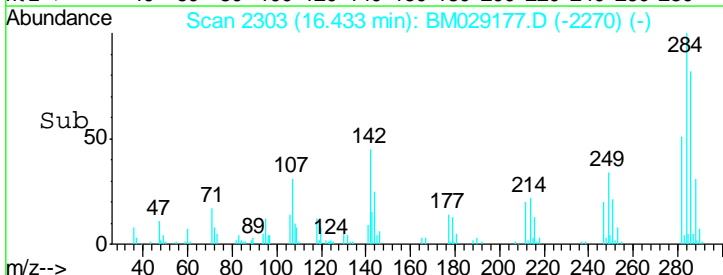


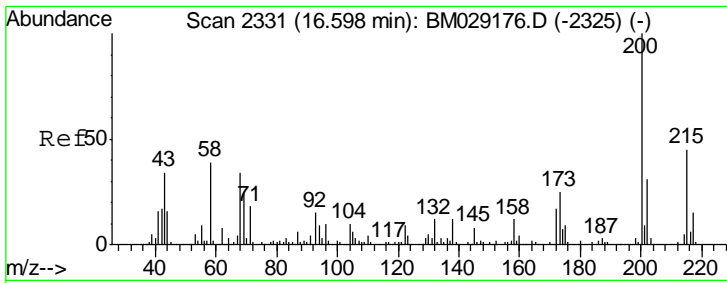
#69
 Hexachlorobenzene
 Concen: 4.411 ng/ul
 RT: 16.43 min Scan# 2303
 Delta R.T. -0.01 min
 Lab File: BM029177.D
 Acq: 22 Mar 2021 14:12



Tgt Ion: 284 Resp: 25420

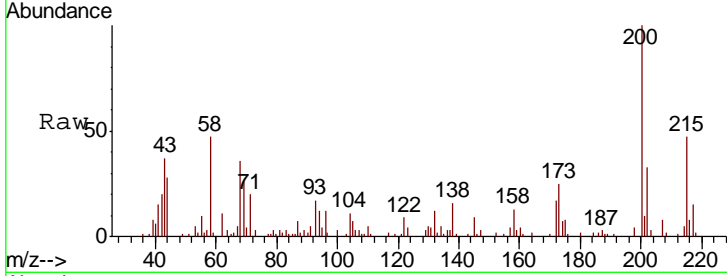
Ion	Ratio	Lower	Upper
284	100		
142	45.2	30.9	46.3
249	33.6	27.1	40.7





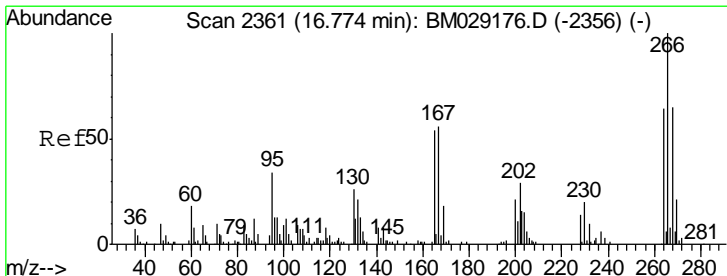
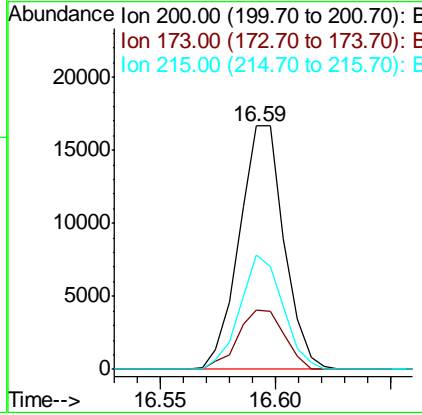
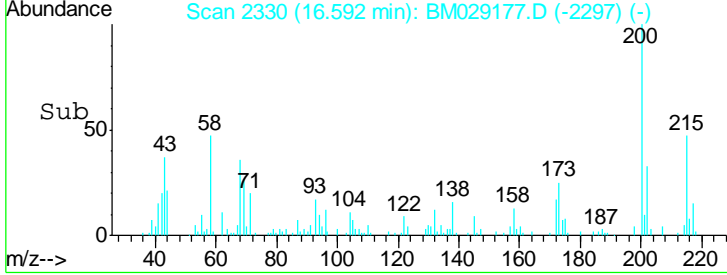
#70
 Atrazine
 Concen: 3.794 ng/ul
 RT: 16.59 min Scan# 2330
 Delta R.T. -0.01 min
 Lab File: BM029177.D
 Acq: 22 Mar 2021 14:12

Instrument :
 BNA_M
ClientSampled :
 MDL-WATER-QT2-2021-04

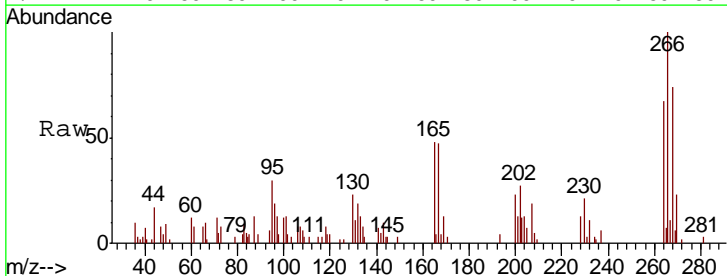


Tgt Ion	Resp	Lower	Upper
200	22575		
200	100		
173	24.6	19.2	28.8
215	47.1	37.5	56.3

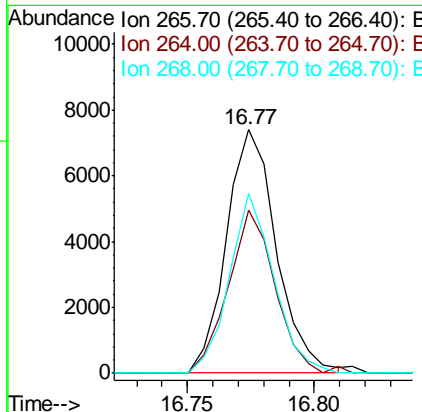
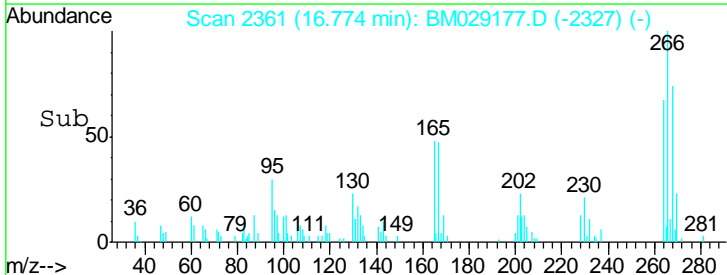
Manual Integrations
APPROVED
 mohammad
 3/23/2021 11:23:16 AM

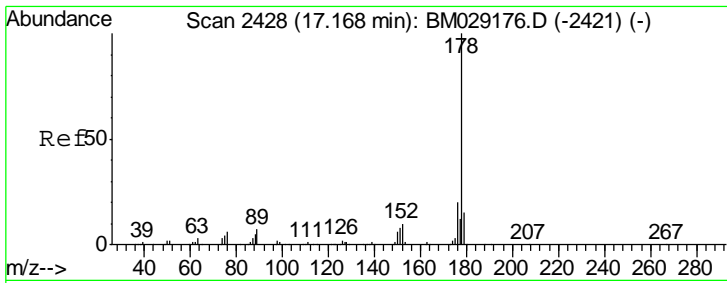


#71
 Pentachlorophenol
 Concen: 3.094 ng/ul
 RT: 16.77 min Scan# 2361
 Delta R.T. -0.00 min
 Lab File: BM029177.D
 Acq: 22 Mar 2021 14:12



Tgt Ion	Resp	Lower	Upper
266	10127		
266	100		
264	66.8	49.2	73.8
268	73.9	47.7	71.5#





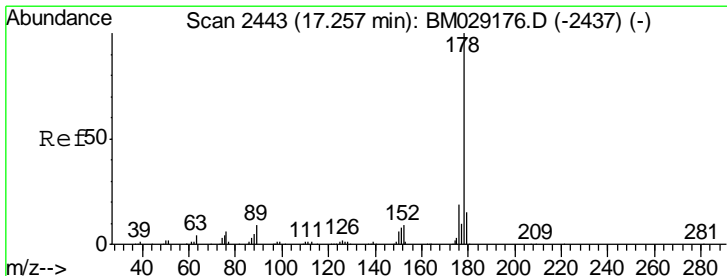
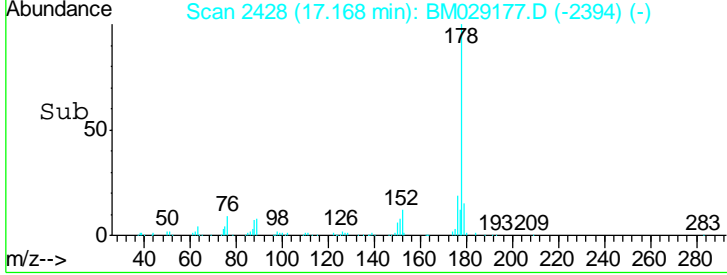
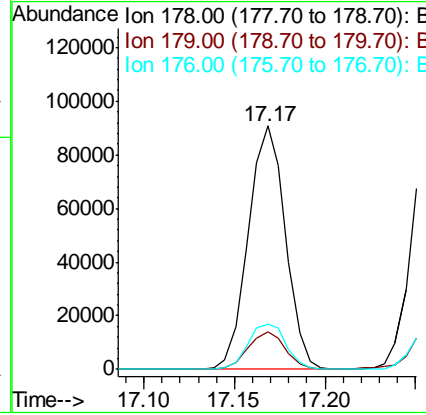
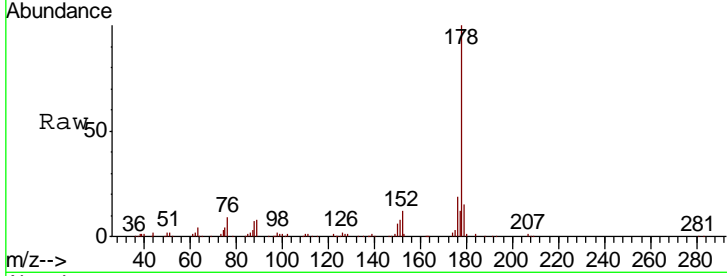
#72
 Phenanthrene
 Concen: 4.496 ng/ul
 RT: 17.17 min Scan# 2428
 Delta R.T. -0.00 min
 Lab File: BM029177.D
 Acq: 22 Mar 2021 14:12

Instrument :
 BNA_M
Client Sampled :
 MDL-WATER-QT2-2021-04

Tgt Ion	Resp	Lower	Upper
178	129060		
179	15.3	12.1	18.1
176	18.7	15.0	22.4

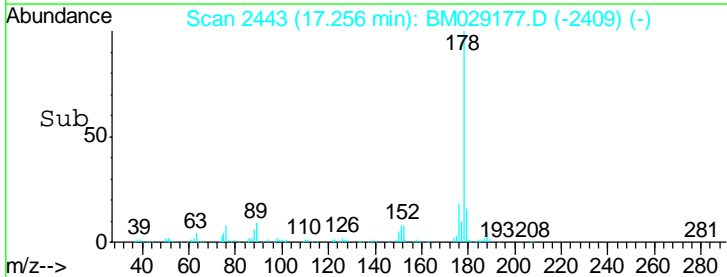
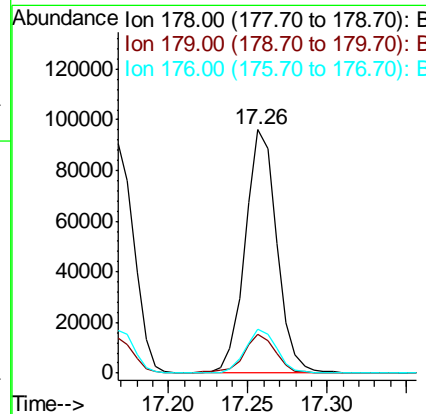
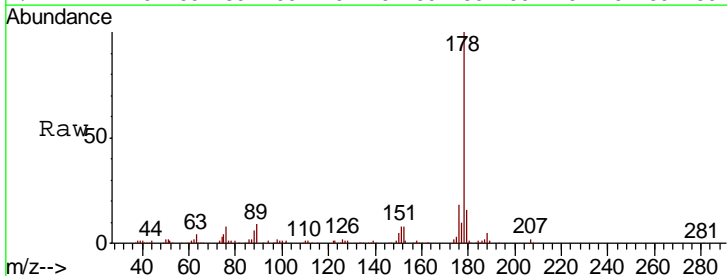
Manual Integrations
APPROVED

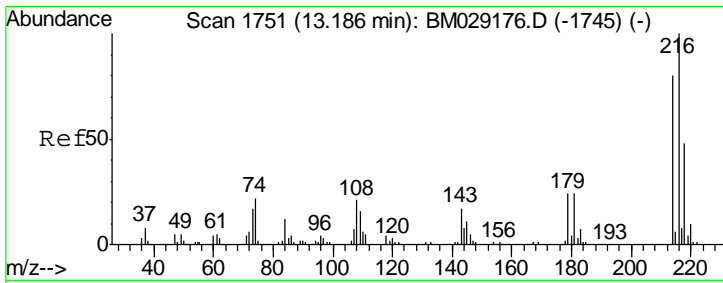
mohammad
 3/23/2021 11:23:16 AM



#74
 Anthracene
 Concen: 4.524 ng/ul
 RT: 17.26 min Scan# 2443
 Delta R.T. -0.00 min
 Lab File: BM029177.D
 Acq: 22 Mar 2021 14:12

Tgt Ion	Resp	Lower	Upper
178	133434		
179	16.2	12.6	18.8
176	18.1	14.7	22.1



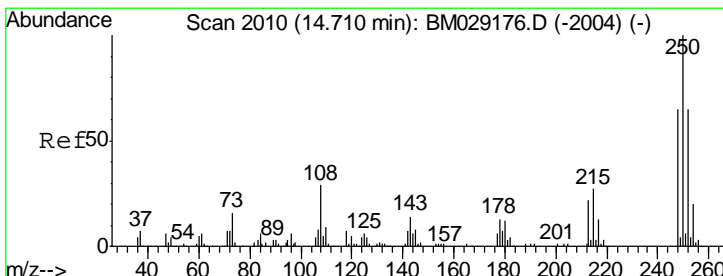
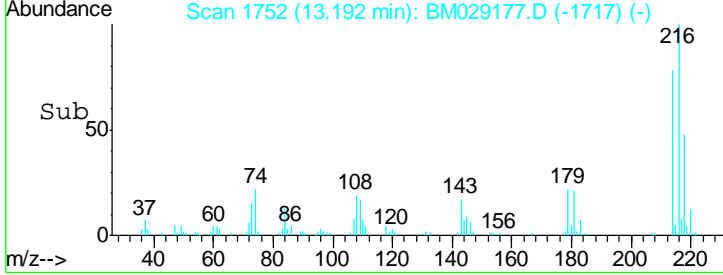
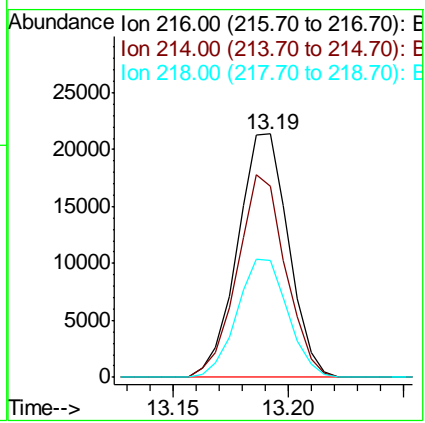
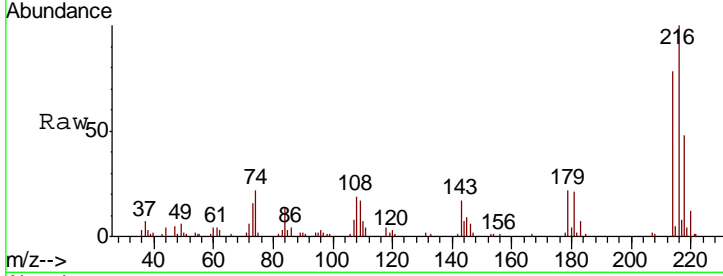


#75
 1,2,3,4-Tetrachlorobenzene
 Concen: 4.185 ng/uL
 RT: 13.19 min Scan# 1752
 Delta R.T. 0.01 min
 Lab File: BM029177.D
 Acq: 22 Mar 2021 14:12

Instrument :
 BNA_M
ClientSampleId :
 MDL-WATER-QT2-2021-04

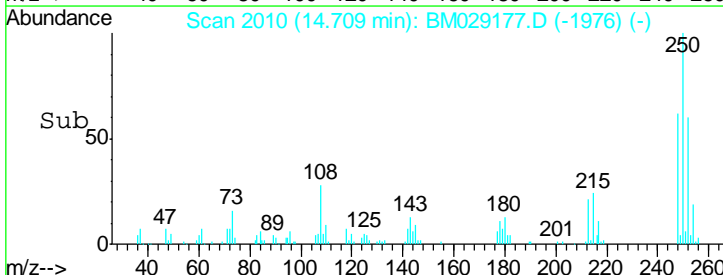
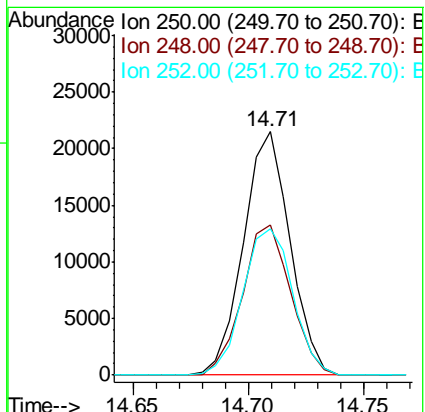
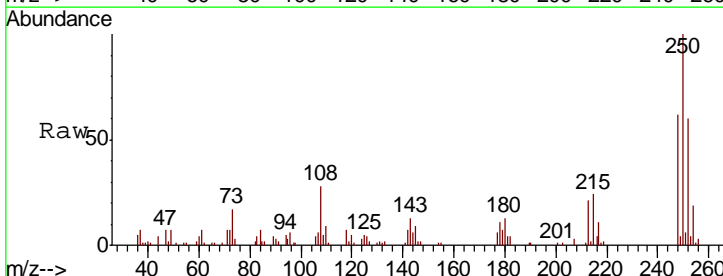
Tgt Ion	Resp	Lower	Upper
216	32862		
216	100		
214	78.3	62.8	94.2
218	48.1	38.1	57.1

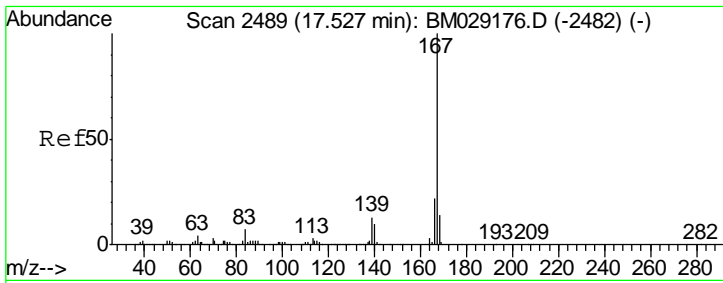
Manual Integrations
APPROVED
 mohammad
 3/23/2021 11:23:16 AM



#76
 Pentachlorobenzene
 Concen: 3.957 ng/uL
 RT: 14.71 min Scan# 2010
 Delta R.T. -0.00 min
 Lab File: BM029177.D
 Acq: 22 Mar 2021 14:12

Tgt Ion	Resp	Lower	Upper
250	30333		
250	100		
248	61.6	52.2	78.2
252	60.1	50.9	76.3





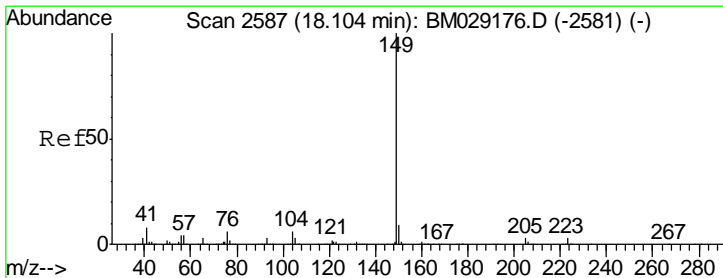
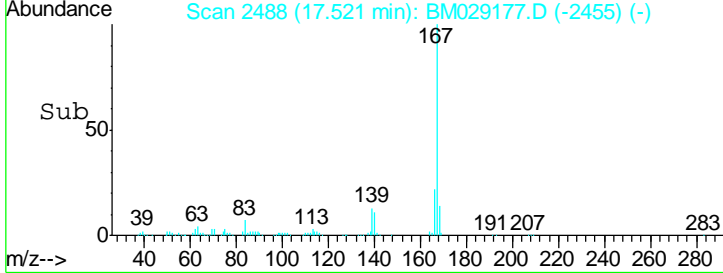
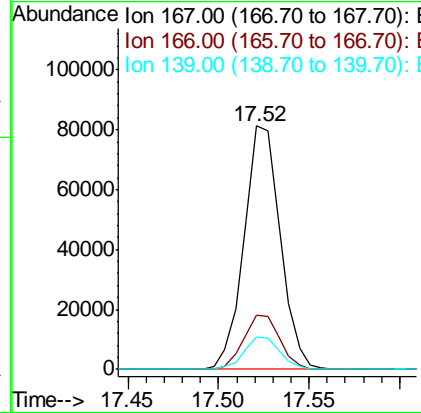
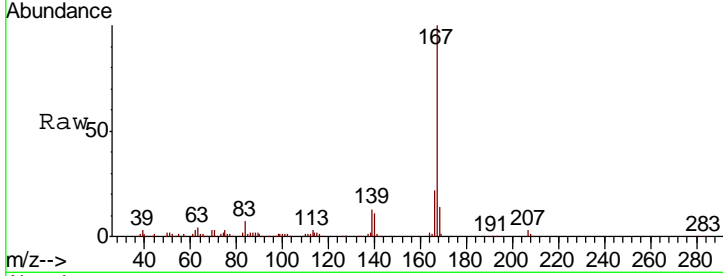
#77
 Carbazole
 Concen: 4.170 ng/ul
 RT: 17.52 min Scan# 2488
 Delta R.T. -0.01 min
 Lab File: BM029177.D
 Acq: 22 Mar 2021 14:12

Instrument :
 BNA_M
ClientSampled :
 MDL-WATER-QT2-2021-04

Tgt Ion	Resp	Lower	Upper
167	113213		
166	22.5	17.2	25.8
139	13.3	10.1	15.1

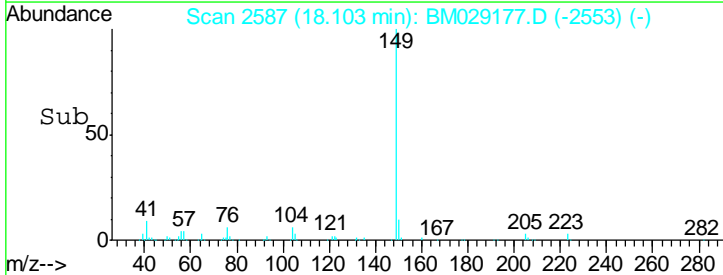
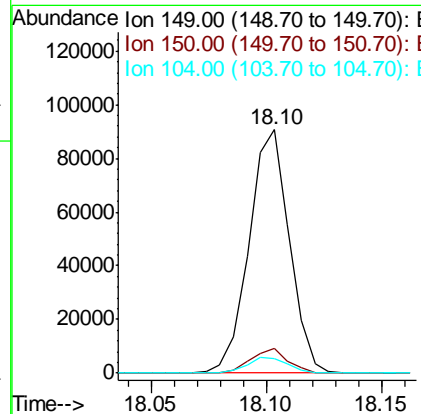
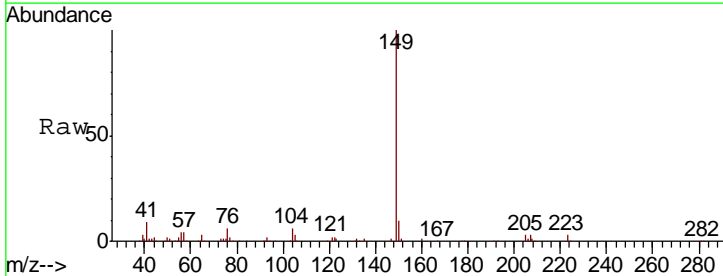
Manual Integrations
APPROVED

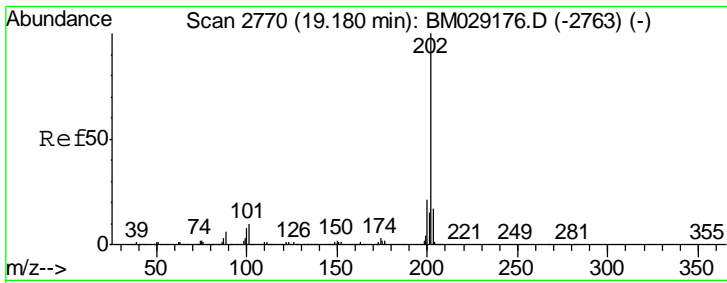
mohammad
 3/23/2021 11:23:16 AM



#78
 Di-n-butylphthalate
 Concen: 3.946 ng/ul
 RT: 18.10 min Scan# 2587
 Delta R.T. -0.00 min
 Lab File: BM029177.D
 Acq: 22 Mar 2021 14:12

Tgt Ion	Resp	Lower	Upper
149	110648		
150	10.1	7.1	10.7
104	6.0	4.6	7.0





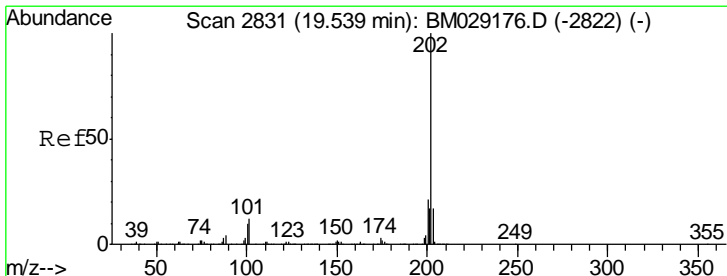
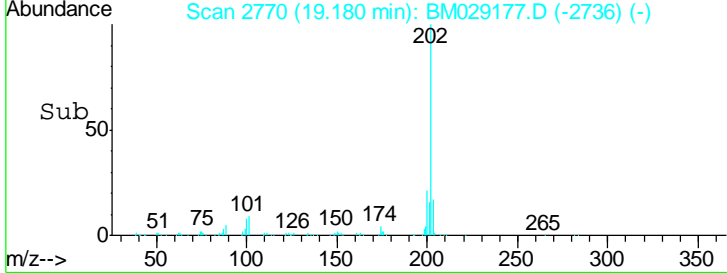
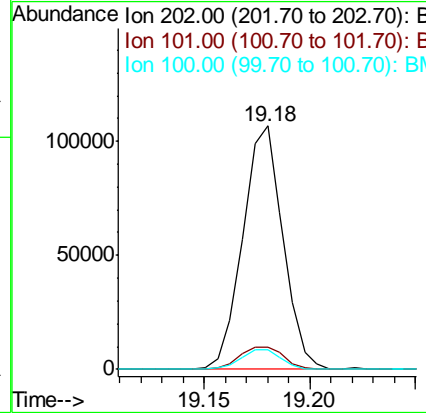
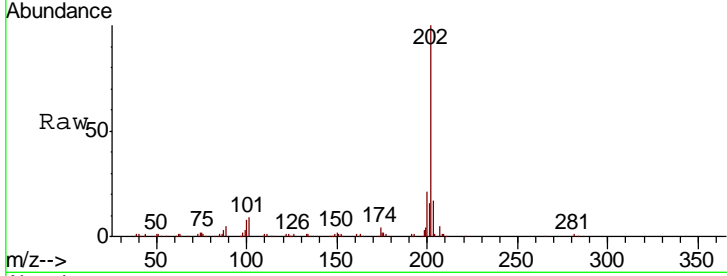
#80
 Fluoranthene
 Concen: 4.477 ng/ul
 RT: 19.18 min Scan# 2770
 Delta R.T. -0.00 min
 Lab File: BM029177.D
 Acq: 22 Mar 2021 14:12

Instrument :
 BNA_M
ClientSampled :
 MDL-WATER-QT2-2021-04

Tgt Ion	Ratio	Lower	Upper
202	100		
101	9.3	7.5	11.3
100	8.3	5.8	8.8

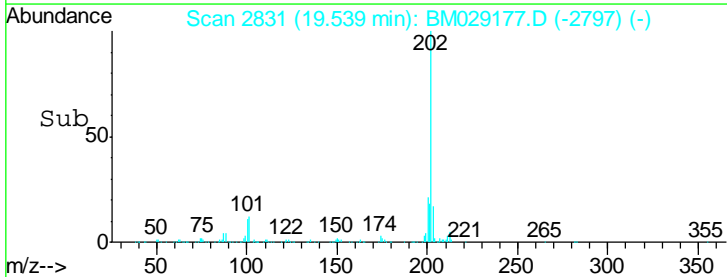
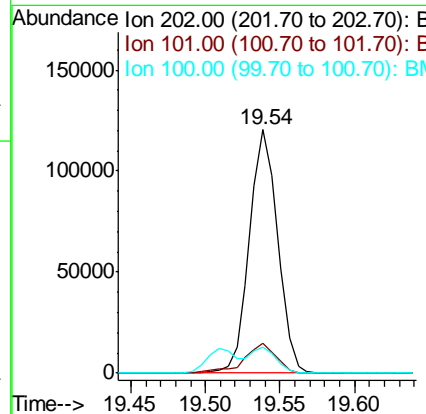
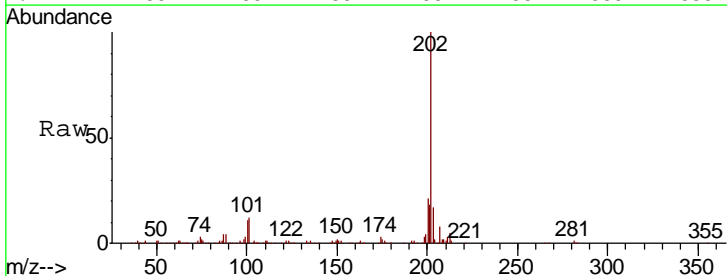
Manual Integrations
APPROVED

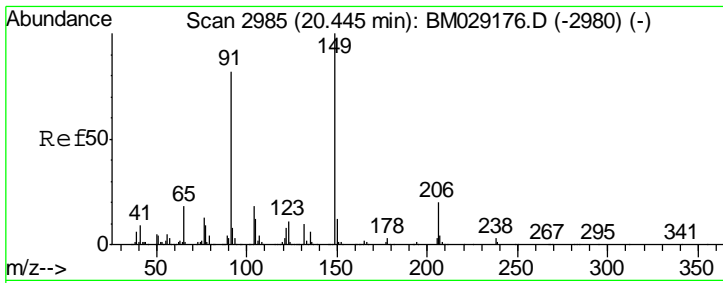
mohammad
 3/23/2021 11:23:16 AM



#82
 Pyrene
 Concen: 4.800 ng/ul
 RT: 19.54 min Scan# 2831
 Delta R.T. -0.00 min
 Lab File: BM029177.D
 Acq: 22 Mar 2021 14:12

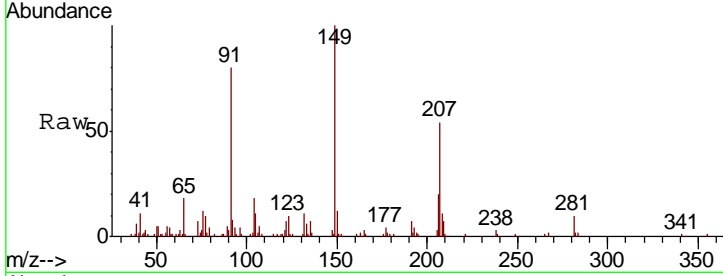
Tgt Ion	Ratio	Lower	Upper
202	100		
101	12.2	8.9	13.3
100	10.6	6.8	10.2#





#83
 Butylbenzylphthalate
 Concen: 3.752 ng/ul
 RT: 20.44 min Scan# 2985
 Delta R.T. -0.00 min
 Lab File: BM029177.D
 Acq: 22 Mar 2021 14:12

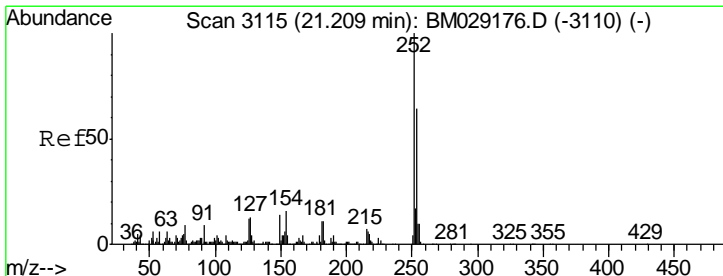
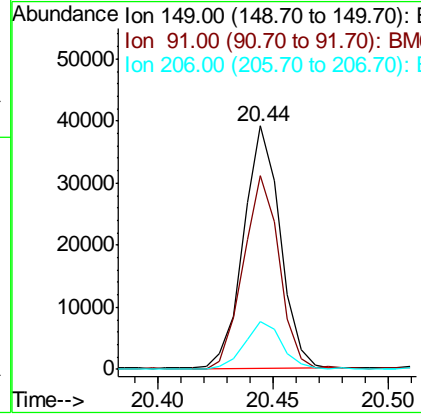
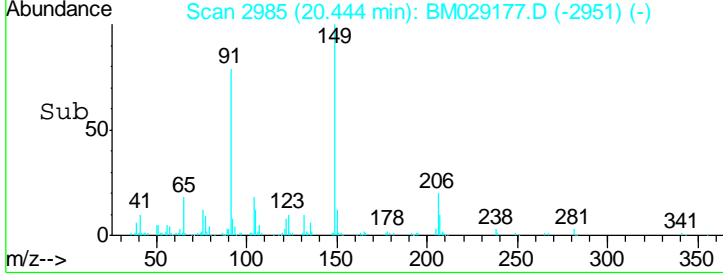
Instrument :
 BNA_M
ClientSampled :
 MDL-WATER-QT2-2021-04



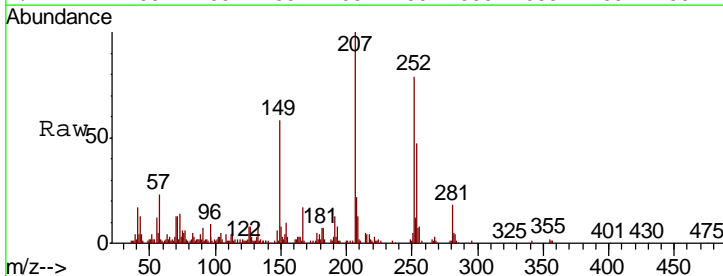
Tgt Ion	Resp	Lower	Upper
149	100		
91	79.5	61.8	92.6
206	19.6	16.0	24.0

Manual Integrations
APPROVED

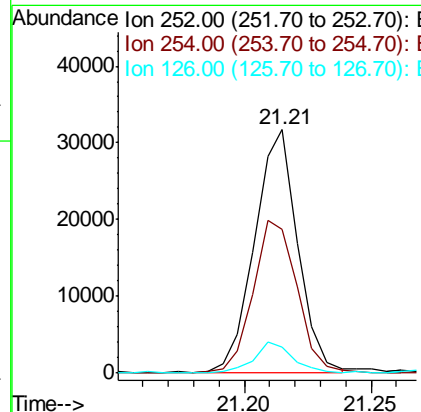
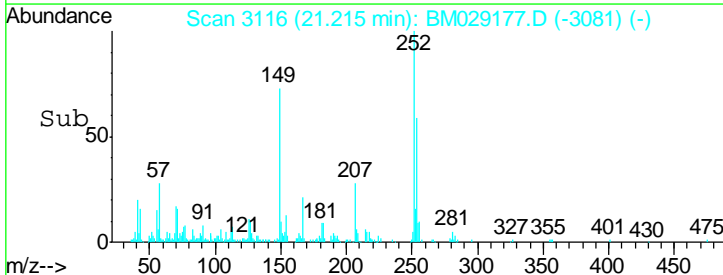
mohammad
 3/23/2021 11:23:16 AM

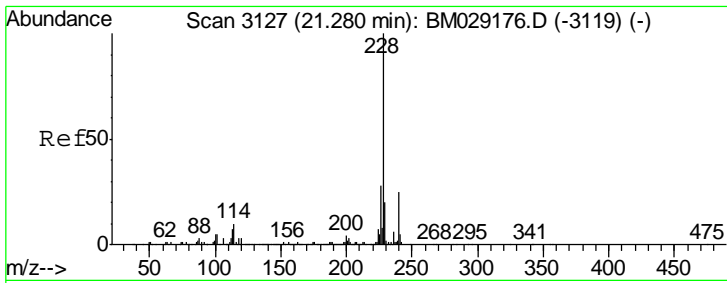


#84
 3,3'-Dichlorobenzidine
 Concen: 3.485 ng/ul
 RT: 21.21 min Scan# 3116
 Delta R.T. 0.01 min
 Lab File: BM029177.D
 Acq: 22 Mar 2021 14:12



Tgt Ion	Resp	Lower	Upper
252	100		
254	59.2	52.1	78.1
126	10.6	8.6	13.0



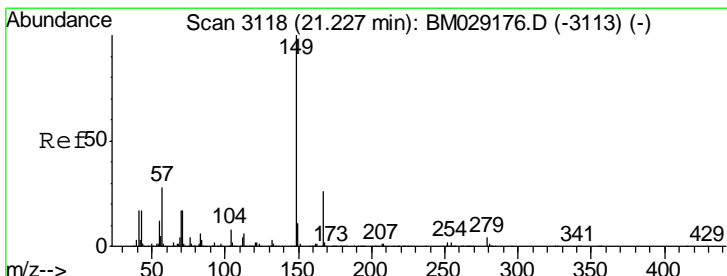
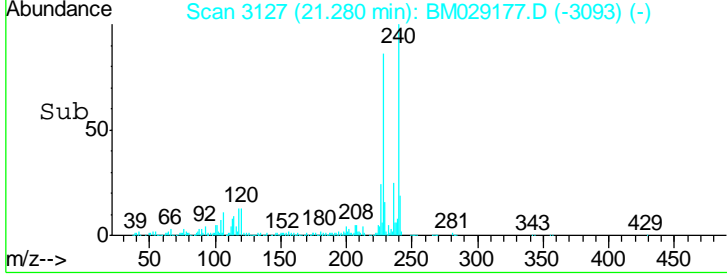
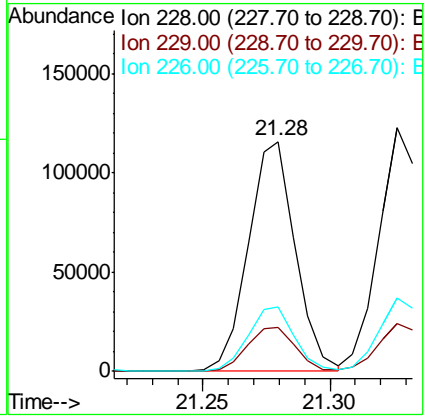
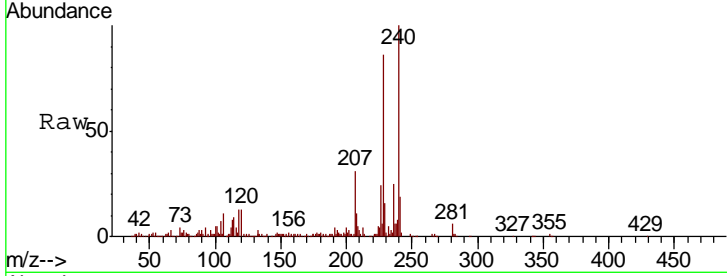


#85
 Benzo(a)anthracene
 Concen: 4.443 ng/ul
 RT: 21.28 min Scan# 3127
 Delta R.T. -0.00 min
 Lab File: BM029177.D
 Acq: 22 Mar 2021 14:12

Instrument :
 BNA_M
ClientSampled :
 MDL-WATER-QT2-2021-04

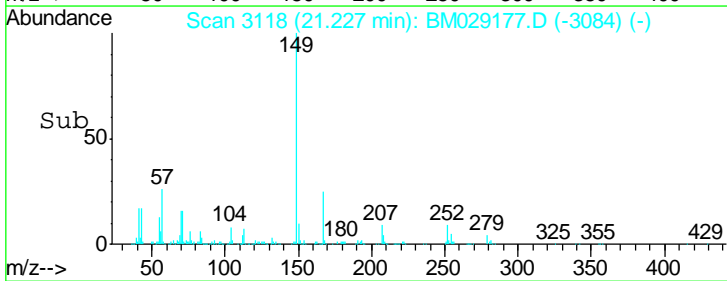
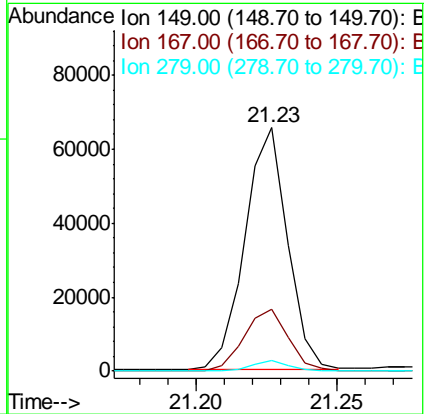
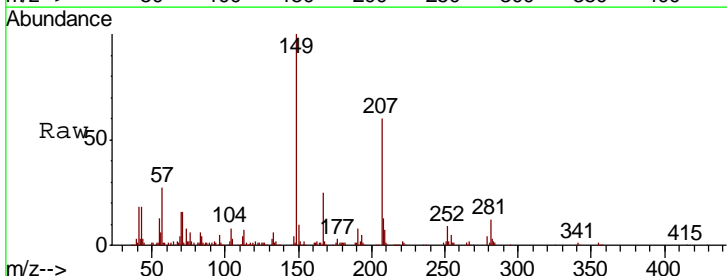
Tgt Ion	Resp	Lower	Upper
228	149984		
229	19.2	16.0	24.0
226	28.0	21.8	32.6

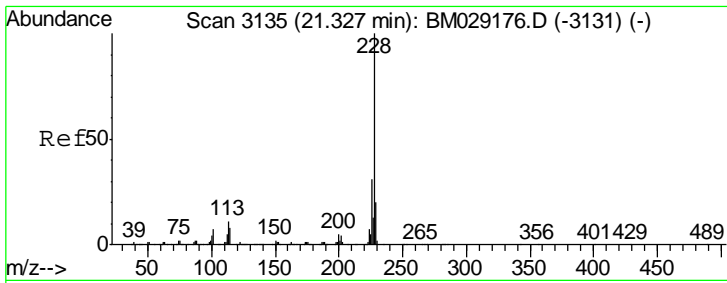
Manual Integrations
APPROVED
 mohammad
 3/23/2021 11:23:16 AM



#86
 Bis(2-ethylhexyl)phthalate
 Concen: 3.609 ng/ul
 RT: 21.23 min Scan# 3118
 Delta R.T. -0.00 min
 Lab File: BM029177.D
 Acq: 22 Mar 2021 14:12

Tgt Ion	Resp	Lower	Upper
149	68523		
167	25.2	20.7	31.1
279	4.4	3.4	5.0





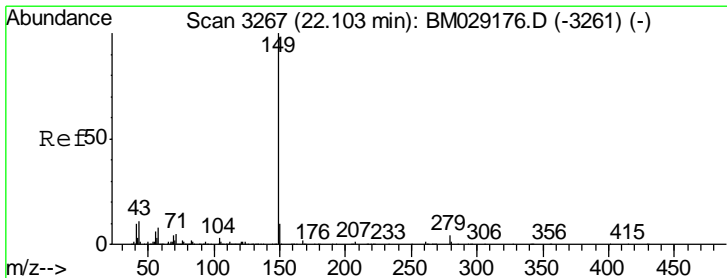
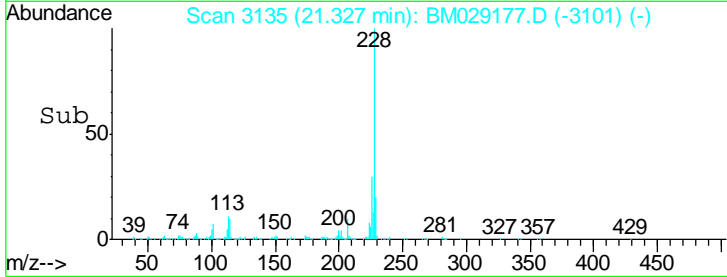
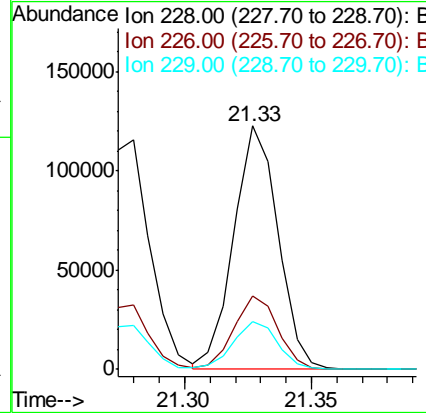
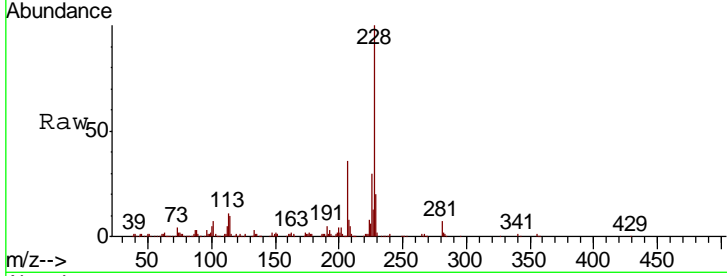
#87
 Chrysene
 Concen: 4.528 ng/ul
 RT: 21.33 min Scan# 3135
 Delta R.T. -0.00 min
 Lab File: BM029177.D
 Acq: 22 Mar 2021 14:12

Instrument :
 BNA_M
ClientSampled :
 MDL-WATER-QT2-2021-04

Tgt Ion	Resp	Lower	Upper
228	100		
226	30.4	24.1	36.1
229	19.6	15.7	23.5

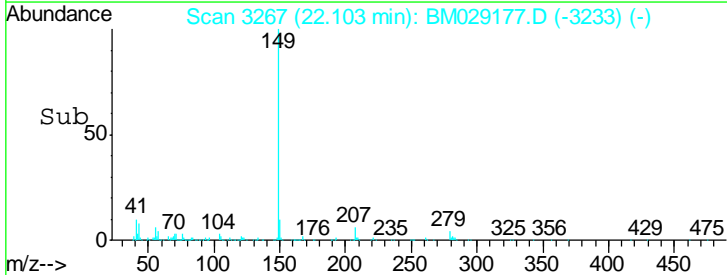
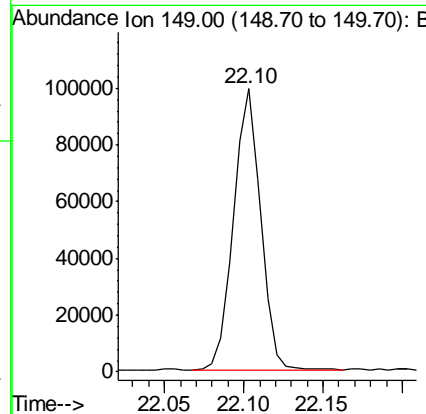
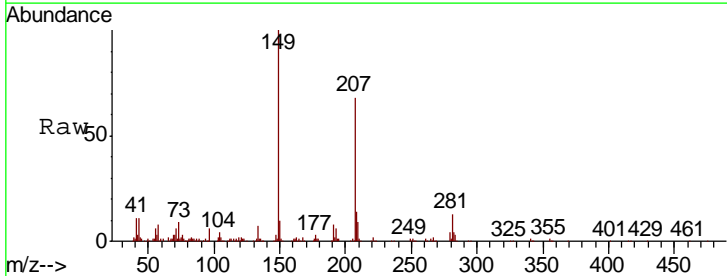
Manual Integrations
APPROVED

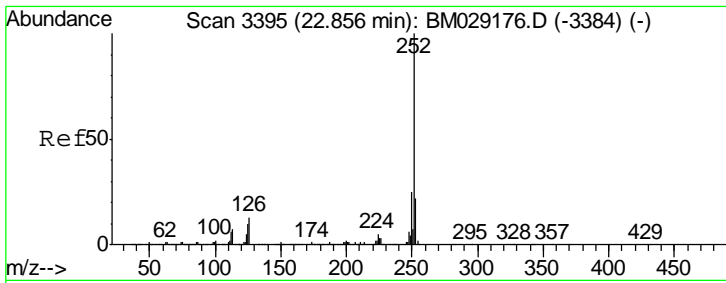
mohammad
 3/23/2021 11:23:16 AM



#89
 Di-n-octyl phthalate
 Concen: 3.298 ng/ul
 RT: 22.10 min Scan# 3267
 Delta R.T. -0.00 min
 Lab File: BM029177.D
 Acq: 22 Mar 2021 14:12

Tgt Ion:149 Resp: 116986





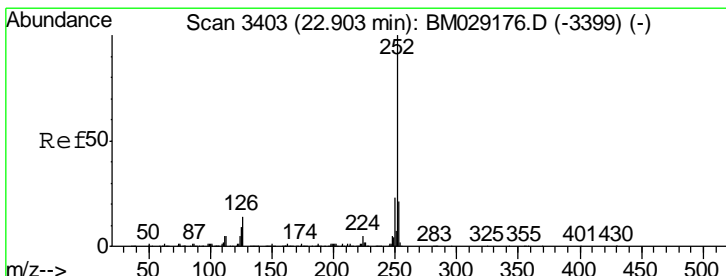
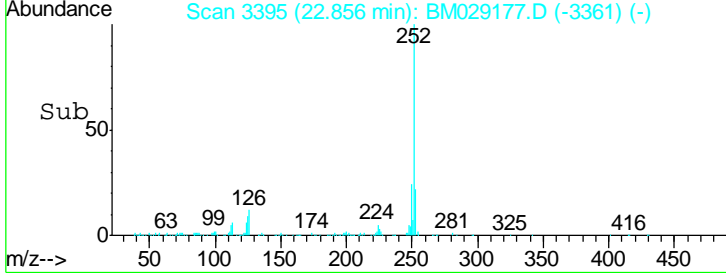
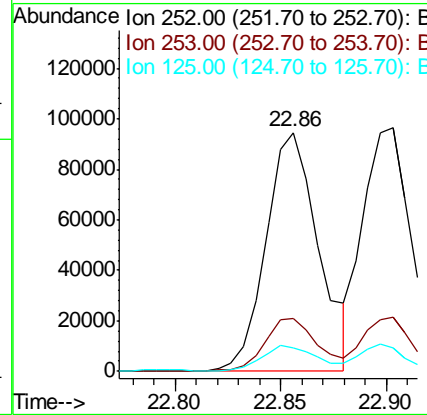
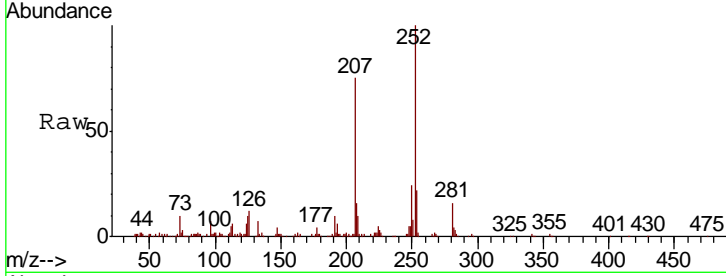
#90
 Benzo(b)fluoranthene
 Concen: 4.552 ng/ul
 RT: 22.86 min Scan# 3395
 Delta R.T. -0.00 min
 Lab File: BM029177.D
 Acq: 22 Mar 2021 14:12

Instrument :
 BNA_M
 ClientSampleId :
 MDL-WATER-QT2-2021-04

Tgt Ion	Ratio	Lower	Upper
252	100		
253	22.4	16.8	25.2
125	9.8	7.4	11.0

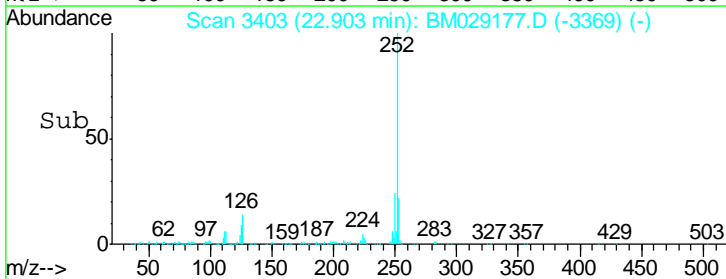
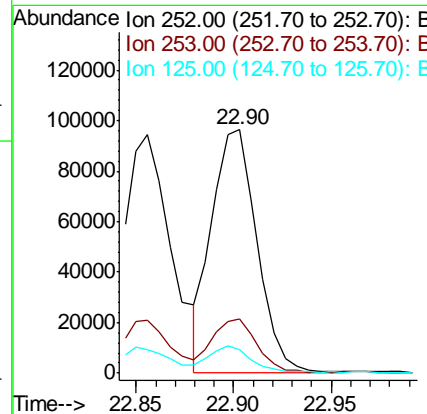
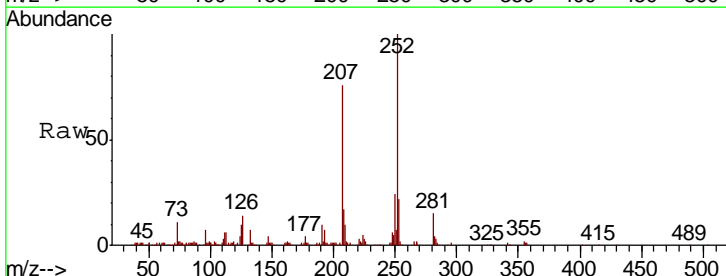
Manual Integrations
 APPROVED

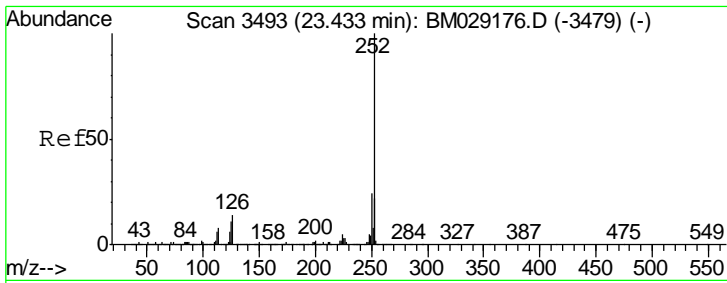
mohammad
 3/23/2021 11:23:16 AM



#91
 Benzo(k)fluoranthene
 Concen: 4.299 ng/ul
 RT: 22.90 min Scan# 3403
 Delta R.T. -0.00 min
 Lab File: BM029177.D
 Acq: 22 Mar 2021 14:12

Tgt Ion	Ratio	Lower	Upper
252	100		
253	22.3	17.6	26.4
125	9.6	7.5	11.3





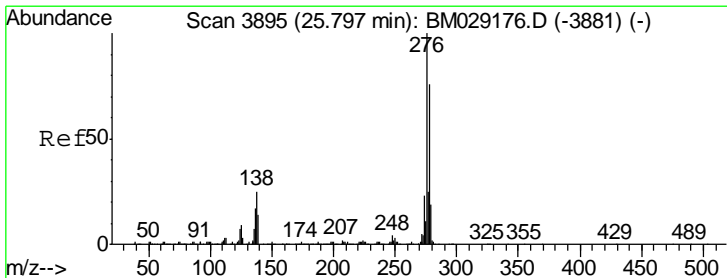
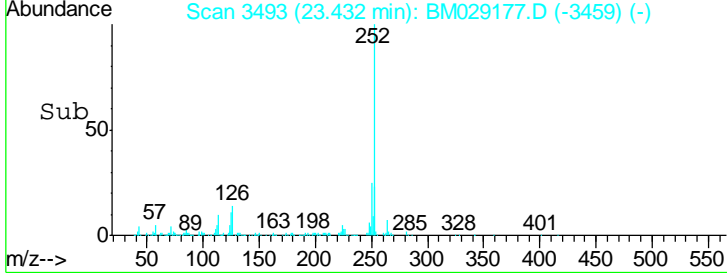
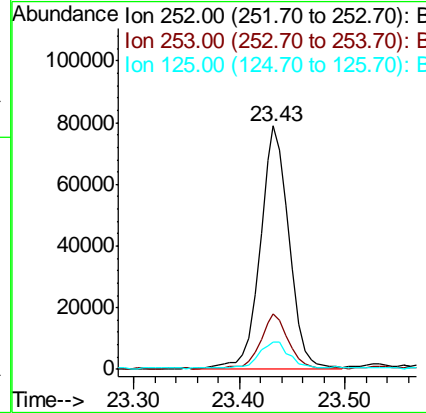
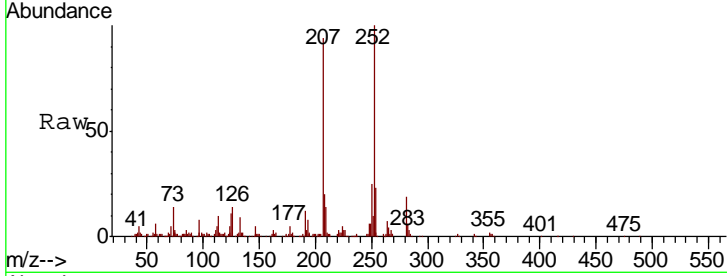
#93
 Benzo(a)pyrene
 Concen: 4.584 ng/ul
 RT: 23.43 min Scan# 3493
 Delta R.T. -0.00 min
 Lab File: BM029177.D
 Acq: 22 Mar 2021 14:12

Instrument :
 BNA_M
ClientSampled :
 MDL-WATER-QT2-2021-04

Tgt Ion	Resp	Lower	Upper
252	149294		
253	23.0	17.0	25.4
125	11.1	7.6	11.4

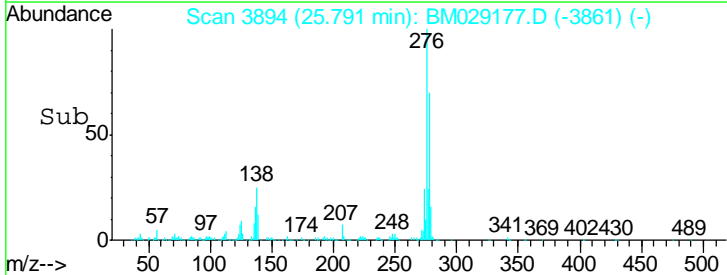
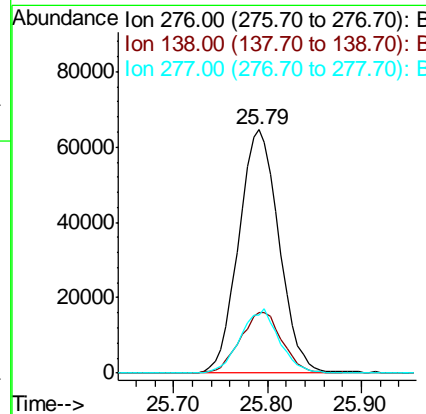
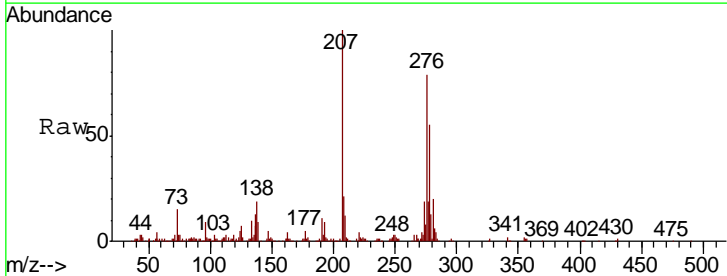
Manual Integrations
APPROVED

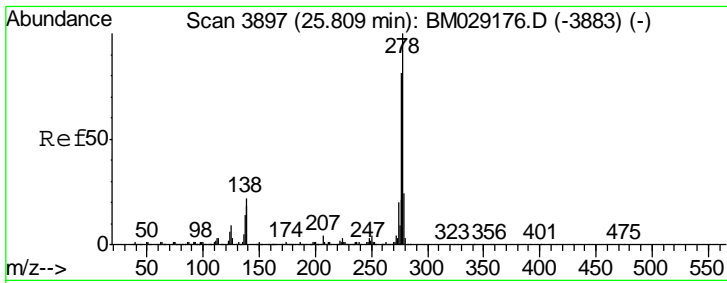
mohammad
 3/23/2021 11:23:16 AM



#94
 Indeno(1,2,3-cd)pyrene
 Concen: 4.384 ng/ul
 RT: 25.79 min Scan# 3894
 Delta R.T. -0.01 min
 Lab File: BM029177.D
 Acq: 22 Mar 2021 14:12

Tgt Ion	Resp	Lower	Upper
276	191995		
138	24.6	19.2	28.8
277	23.9	20.3	30.5





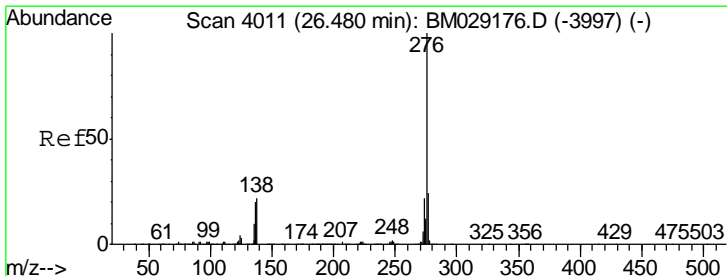
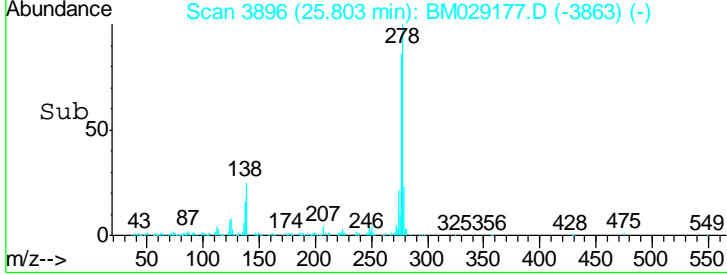
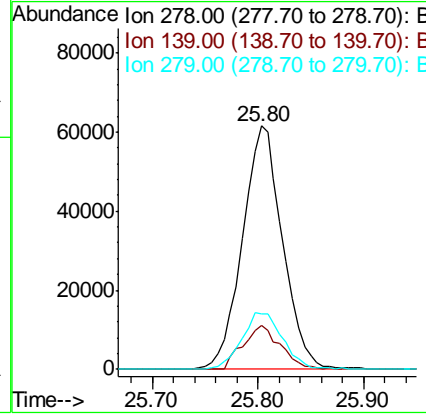
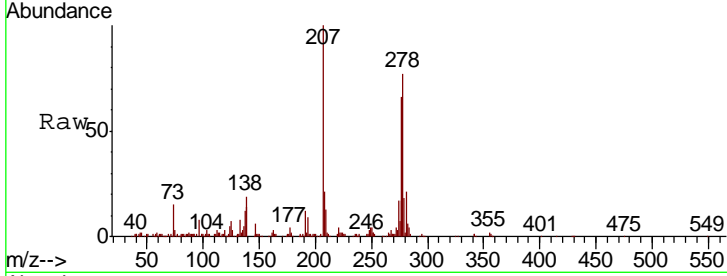
#95
 Dibenzo(a,h)anthracene
 Concen: 4.383 ng/ul
 RT: 25.80 min Scan# 3896
 Delta R.T. -0.01 min
 Lab File: BM029177.D
 Acq: 22 Mar 2021 14:12

Instrument :
 BNA_M
ClientSampled :
 MDL-WATER-QT2-2021-04

Tgt Ion	Ratio	Lower	Upper
278	100		
139	18.3	12.7	19.1
279	23.0	19.3	28.9

Manual Integrations
APPROVED

mohammad
 3/23/2021 11:23:16 AM



#96
 Benzo(g,h,i)perylene
 Concen: 4.335 ng/ul
 RT: 26.48 min Scan# 4011
 Delta R.T. -0.00 min
 Lab File: BM029177.D
 Acq: 22 Mar 2021 14:12

Tgt Ion	Ratio	Lower	Upper
276	100		
138	21.6	16.4	24.6
277	22.8	18.6	27.8

