

Data Path : Z:\svoasrv\HPCHEM1\BNA_M\Data\BM040125\
 Data File : BM049771.D
 Acq On : 01 Apr 2025 12:54
 Operator : RC/JU
 Sample : Q1597-08
 Misc :
 ALS Vial : 6 Sample Multiplier: 1

Instrument :
 BNA_M
 ClientSampleId :
 1-CONCRETE-SLAB

Quant Time: Apr 01 13:32:20 2025
 Quant Method : Z:\svoasrv\HPCHEM1\BNA_M\Methods\8270-BM031325.M
 Quant Title : ASP BNA STANDARDS FOR 5 POINT CALIBRATION
 QLast Update : Thu Mar 13 14:55:34 2025
 Response via : Initial Calibration

Compound	R.T.	QIon	Response	Conc	Units	Dev(Min)
Internal Standards						
1) 1,4-Dichlorobenzene-d4	7.792	152	314201	20.000	ng	-0.01
21) Naphthalene-d8	10.586	136	1089882	20.000	ng	-0.02
39) Acenaphthene-d10	14.433	164	721540	20.000	ng	-0.01
64) Phenanthrene-d10	17.174	188	1329740	20.000	ng	-0.01
76) Chrysene-d12	21.409	240	950939	20.000	ng	-0.02
86) Perylene-d12	24.409	264	831342	20.000	ng	-0.03
System Monitoring Compounds						
5) 2-Fluorophenol	5.375	112	1003399	53.885	ng	-0.01
7) Phenol-d6	6.963	99	1534579	65.668	ng	-0.02
23) Nitrobenzene-d5	8.945	82	1097966	51.723	ng	-0.02
42) 2,4,6-Tribromophenol	15.915	330	352116	41.792	ng	-0.02
45) 2-Fluorobiphenyl	13.057	172	3001300	52.094	ng	-0.01
79) Terphenyl-d14	19.798	244	3963178	70.230	ng	-0.01

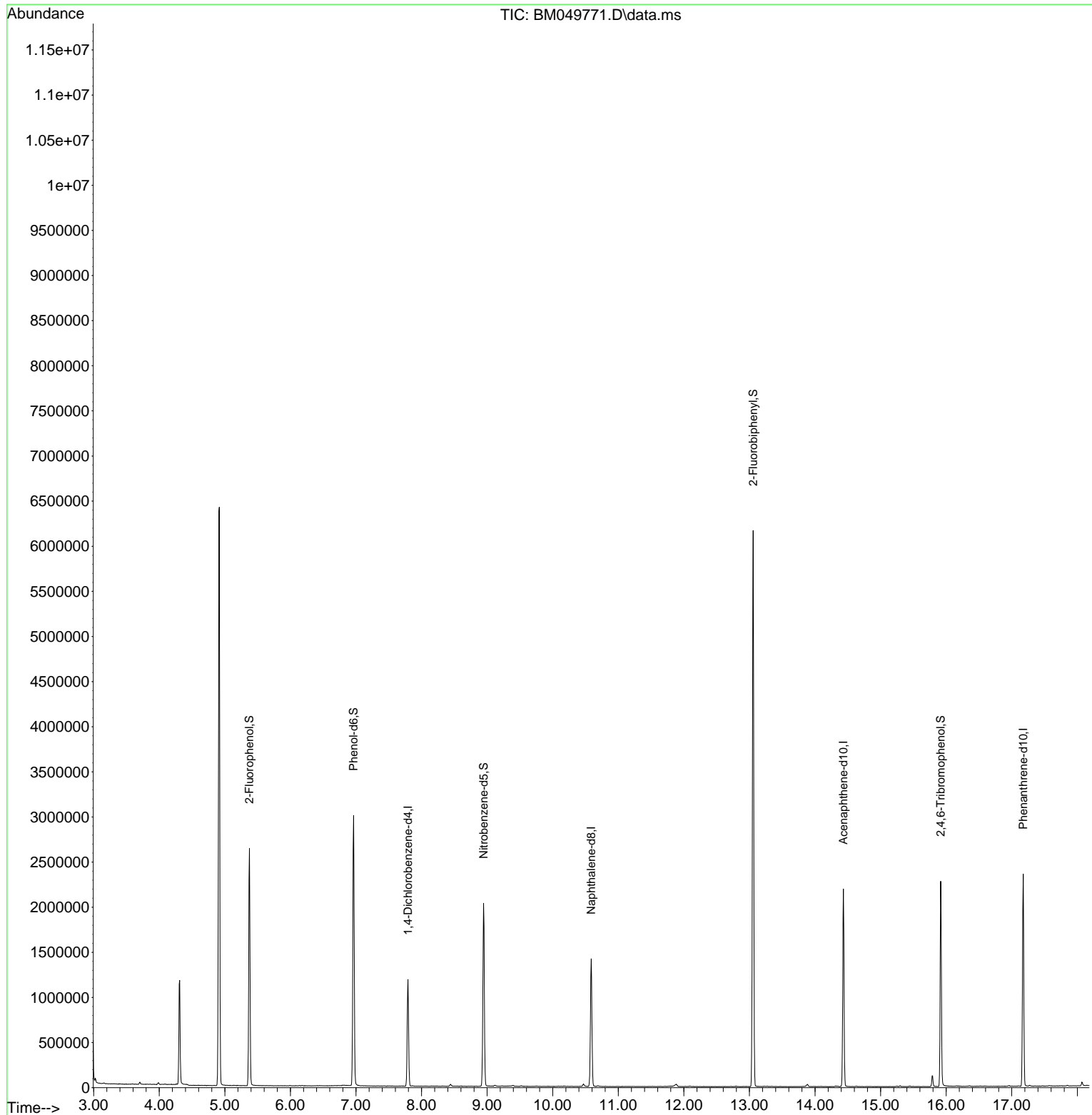
Target Compounds Qvalue

(#) = qualifier out of range (m) = manual integration (+) = signals summed

Data Path : Z:\svoasrv\HPCHEM1\BNA_M\Data\BM040125\
 Data File : BM049771.D
 Acq On : 01 Apr 2025 12:54
 Operator : RC/JU
 Sample : Q1597-08
 Misc :
 ALS Vial : 6 Sample Multiplier: 1

Instrument :
 BNA_M
 ClientSampleId :
 1-CONCRETE-SLAB

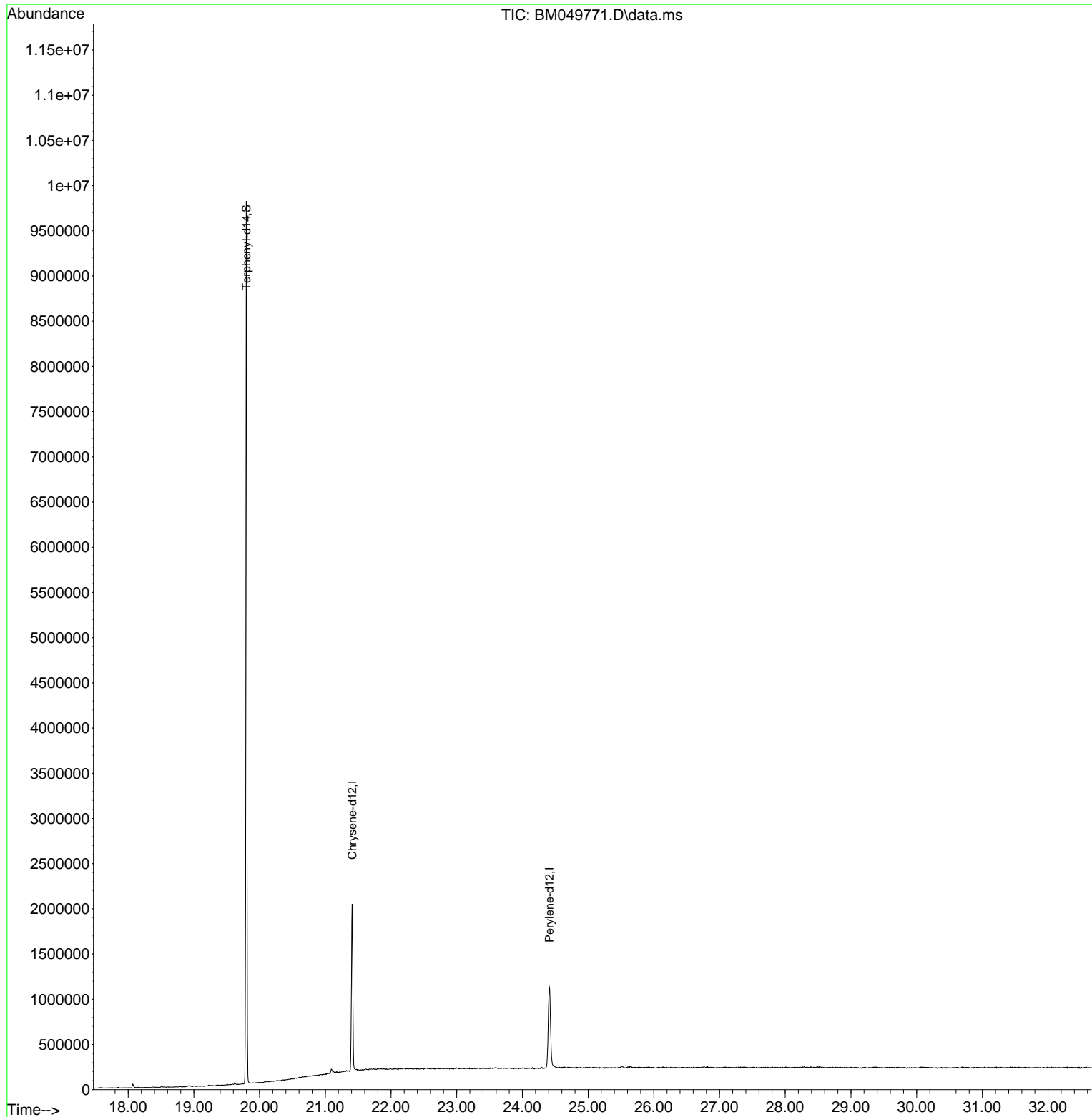
Quant Time: Apr 01 13:32:20 2025
 Quant Method : Z:\svoasrv\HPCHEM1\BNA_M\Methods\8270-BM031325.M
 Quant Title : ASP BNA STANDARDS FOR 5 POINT CALIBRATION
 QLast Update : Thu Mar 13 14:55:34 2025
 Response via : Initial Calibration

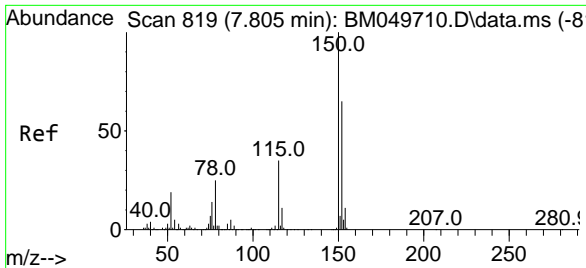


Data Path : Z:\svoasrv\HPCHEM1\BNA_M\Data\BM040125\
Data File : BM049771.D
Acq On : 01 Apr 2025 12:54
Operator : RC/JU
Sample : Q1597-08
Misc :
ALS Vial : 6 Sample Multiplier: 1

Instrument :
BNA_M
ClientSampleId :
1-CONCRETE-SLAB

Quant Time: Apr 01 13:32:20 2025
Quant Method : Z:\svoasrv\HPCHEM1\BNA_M\Methods\8270-BM031325.M
Quant Title : ASP BNA STANDARDS FOR 5 POINT CALIBRATION
QLast Update : Thu Mar 13 14:55:34 2025
Response via : Initial Calibration



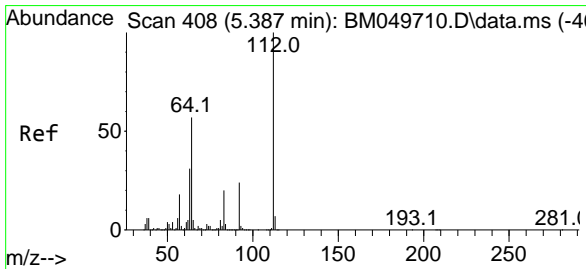
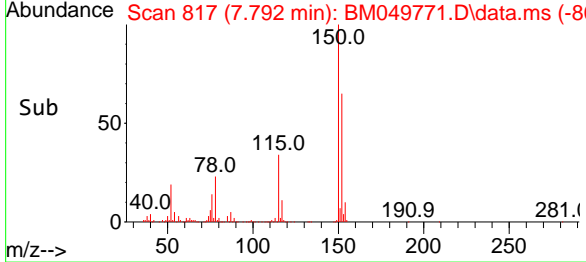
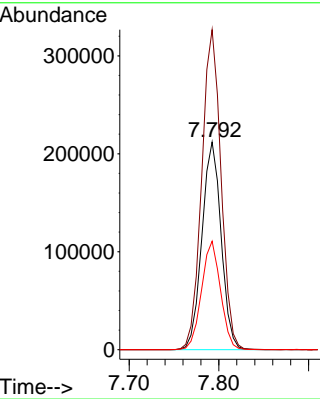
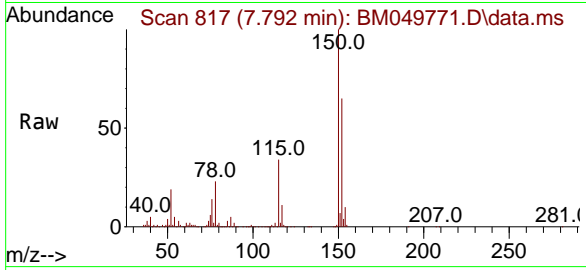


#1
 1,4-Dichlorobenzene-d4
 Concen: 20.000 ng
 RT: 7.792 min Scan# 817
 Delta R.T. -0.013 min
 Lab File: BM049771.D
 Acq: 01 Apr 2025 12:54

Instrument :
 BNA_M
 ClientSampleId :
 1-CONCRETE-SLAB

Tgt Ion:152 Resp: 314201

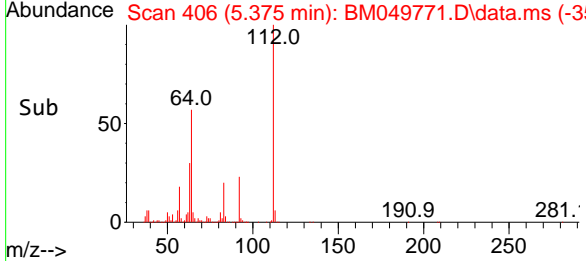
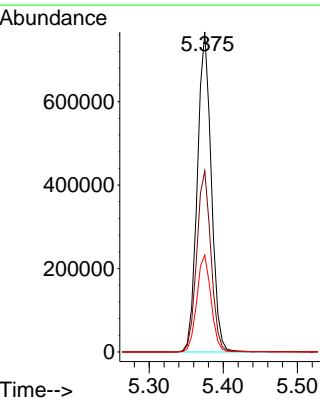
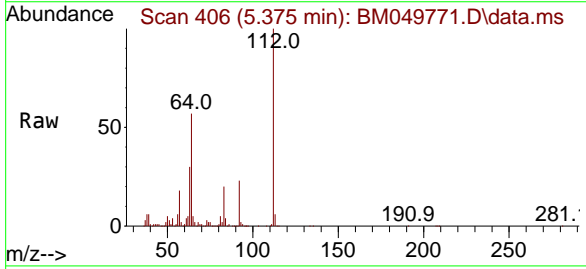
Ion	Ratio	Lower	Upper
152	100		
150	154.1	123.8	185.8
115	52.3	43.0	64.6

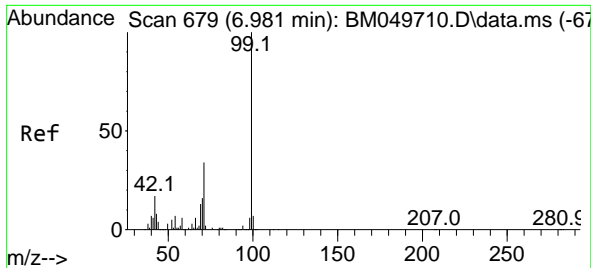


#5
 2-Fluorophenol
 Concen: 53.885 ng
 RT: 5.375 min Scan# 406
 Delta R.T. -0.012 min
 Lab File: BM049771.D
 Acq: 01 Apr 2025 12:54

Tgt Ion:112 Resp: 1003399

Ion	Ratio	Lower	Upper
112	100		
64	56.6	45.3	67.9
63	30.3	24.4	36.6



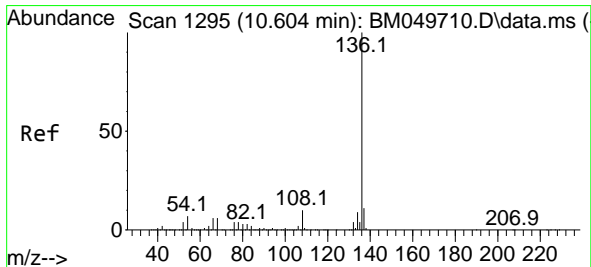
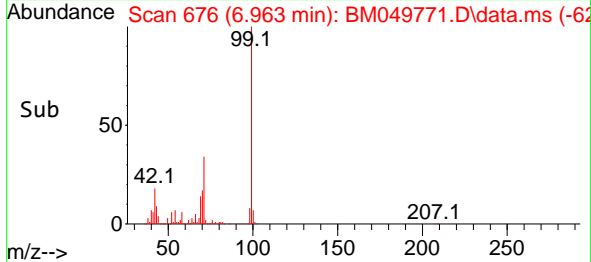
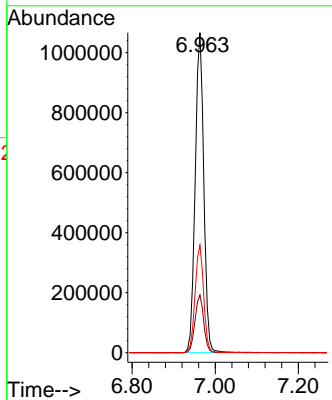
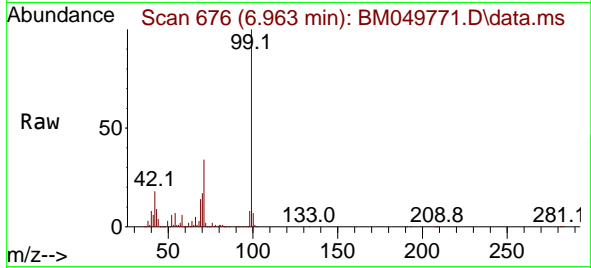


#7
 Phenol-d6
 Concen: 65.668 ng
 RT: 6.963 min Scan# 61
 Delta R.T. -0.018 min
 Lab File: BM049771.D
 Acq: 01 Apr 2025 12:54

Instrument : BNA_M
 ClientSampleId : 1-CONCRETE-SLAB

Tgt Ion: 99 Resp: 1534579

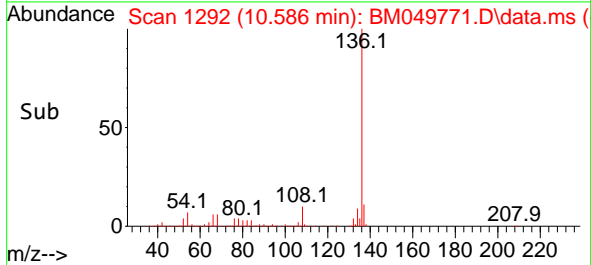
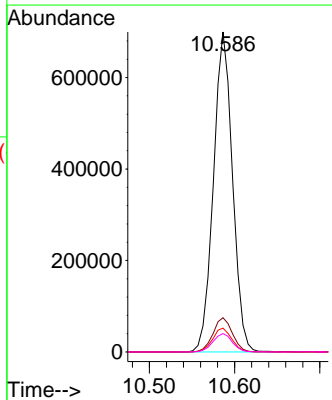
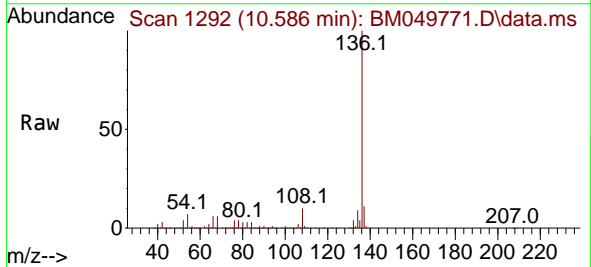
Ion	Ratio	Lower	Upper
99	100		
42	18.0	13.6	20.4
71	33.6	27.0	40.6

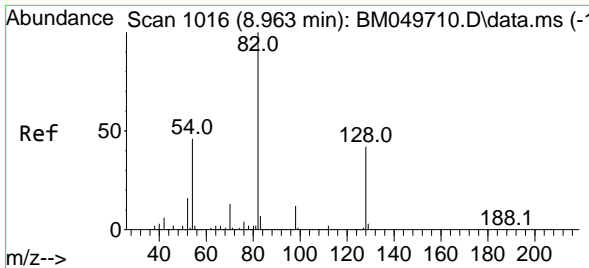


#21
 Naphthalene-d8
 Concen: 20.000 ng
 RT: 10.586 min Scan# 1292
 Delta R.T. -0.018 min
 Lab File: BM049771.D
 Acq: 01 Apr 2025 12:54

Tgt Ion: 136 Resp: 1089882

Ion	Ratio	Lower	Upper
136	100		
137	10.7	8.6	12.8
54	7.5	5.8	8.8
68	5.8	4.5	6.7



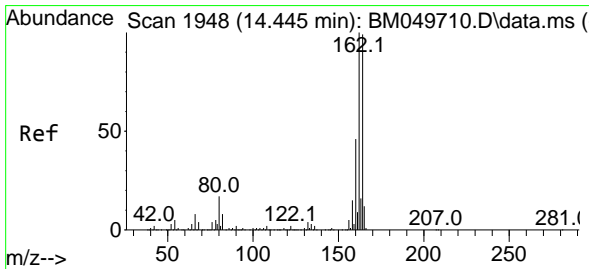
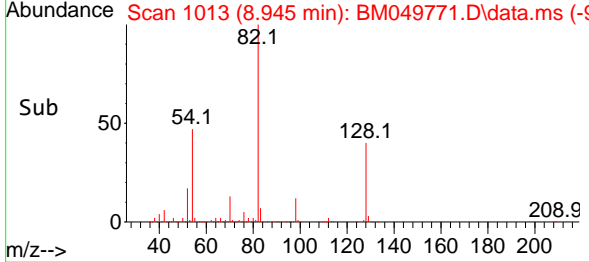
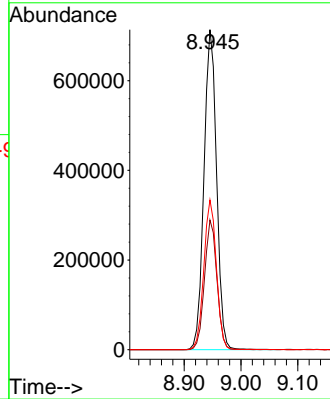
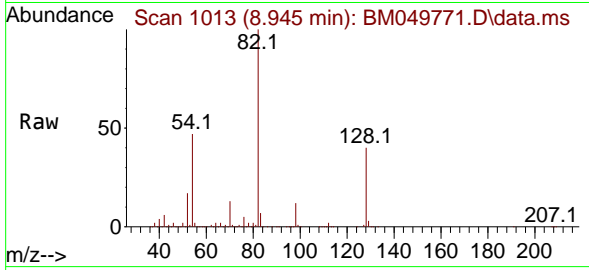


#23
 Nitrobenzene-d5
 Concen: 51.723 ng
 RT: 8.945 min Scan# 1016
 Delta R.T. -0.018 min
 Lab File: BM049771.D
 Acq: 01 Apr 2025 12:54

Instrument : BNA_M
 ClientSampleId : 1-CONCRETE-SLAB

Tgt Ion: 82 Resp: 1097966

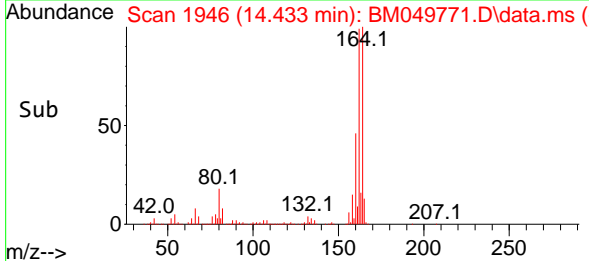
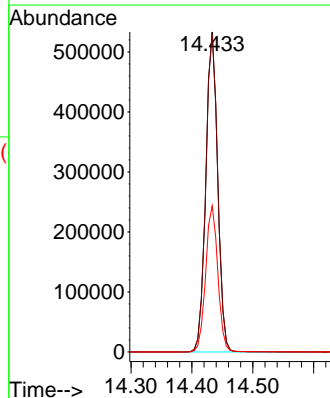
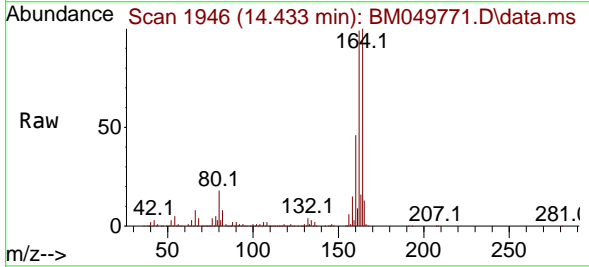
Ion	Ratio	Lower	Upper
82	100		
128	40.5	33.4	50.0
54	46.8	36.4	54.6

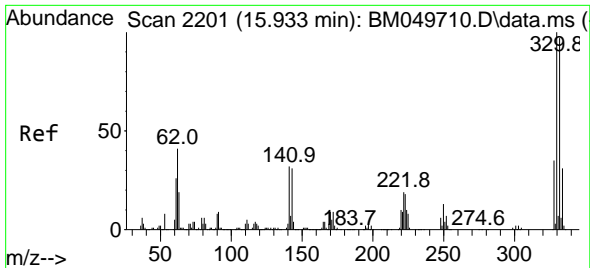


#39
 Acenaphthene-d10
 Concen: 20.000 ng
 RT: 14.433 min Scan# 1946
 Delta R.T. -0.012 min
 Lab File: BM049771.D
 Acq: 01 Apr 2025 12:54

Tgt Ion: 164 Resp: 721540

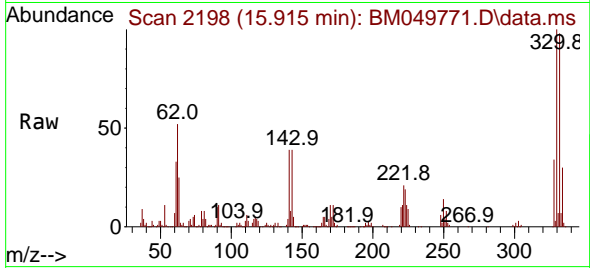
Ion	Ratio	Lower	Upper
164	100		
162	99.4	80.5	120.7
160	45.6	36.9	55.3



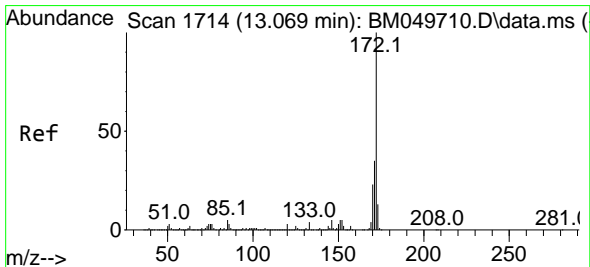
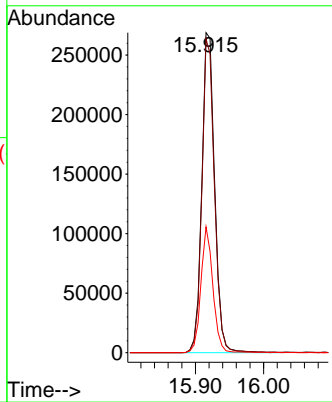
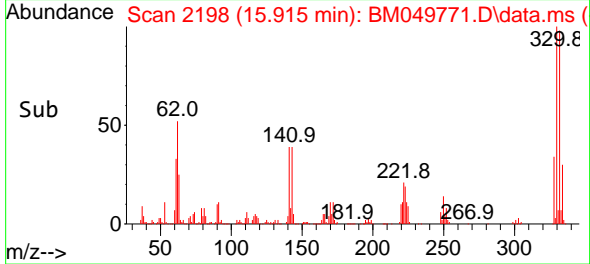


#42
 2,4,6-Tribromophenol
 Concen: 41.792 ng
 RT: 15.915 min Scan# 21
 Delta R.T. -0.018 min
 Lab File: BM049771.D
 Acq: 01 Apr 2025 12:54

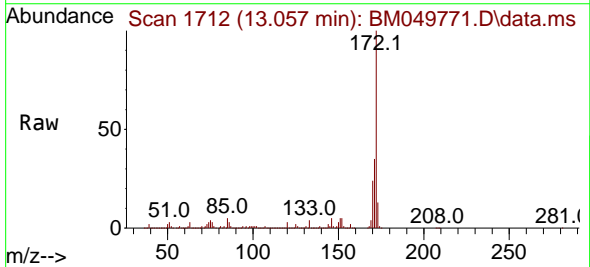
Instrument :
 BNA_M
 ClientSampleId :
 1-CONCRETE-SLAB



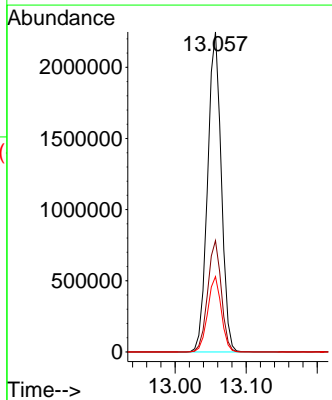
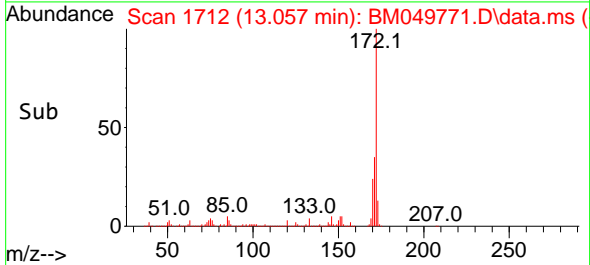
Tgt Ion:330 Resp: 352116
 Ion Ratio Lower Upper
 330 100
 332 95.9 77.0 115.4
 141 36.9 27.8 41.6

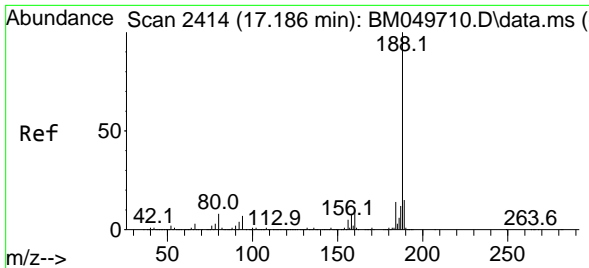


#45
 2-Fluorobiphenyl
 Concen: 52.094 ng
 RT: 13.057 min Scan# 1712
 Delta R.T. -0.012 min
 Lab File: BM049771.D
 Acq: 01 Apr 2025 12:54



Tgt Ion:172 Resp: 3001300
 Ion Ratio Lower Upper
 172 100
 171 34.8 27.9 41.9
 170 23.5 18.6 28.0



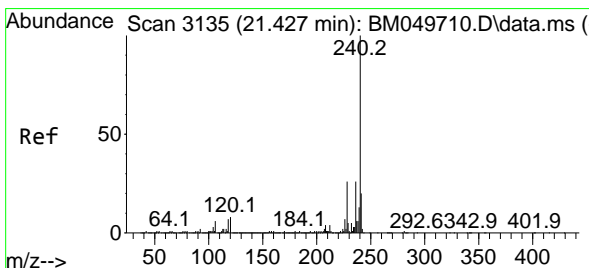
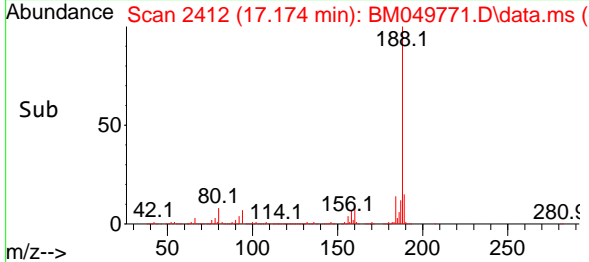
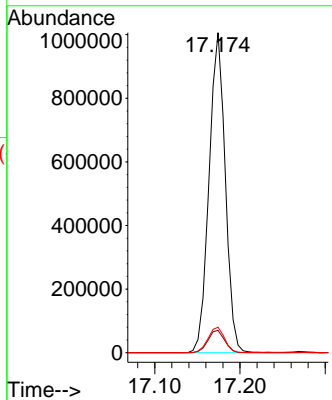
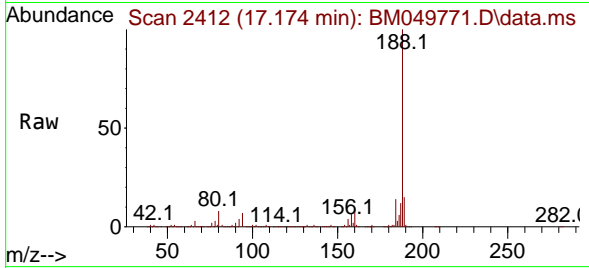


#64
 Phenanthrene-d10
 Concen: 20.000 ng
 RT: 17.174 min Scan# 2412
 Delta R.T. -0.012 min
 Lab File: BM049771.D
 Acq: 01 Apr 2025 12:54

Instrument : BNA_M
 ClientSampleId : 1-CONCRETE-SLAB

Tgt Ion:188 Resp: 1329740

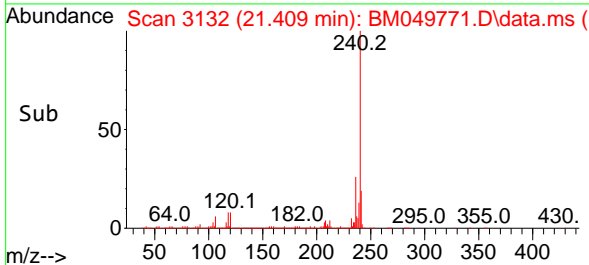
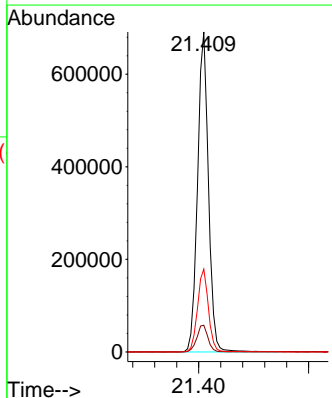
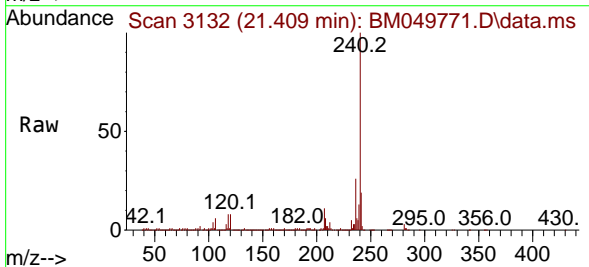
Ion	Ratio	Lower	Upper
188	100		
94	7.0	5.8	8.6
80	8.0	6.3	9.5

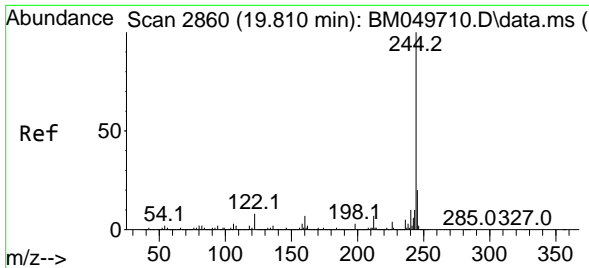


#76
 Chrysene-d12
 Concen: 20.000 ng
 RT: 21.409 min Scan# 3132
 Delta R.T. -0.018 min
 Lab File: BM049771.D
 Acq: 01 Apr 2025 12:54

Tgt Ion:240 Resp: 950939

Ion	Ratio	Lower	Upper
240	100		
120	8.4	6.5	9.7
236	25.9	20.7	31.1



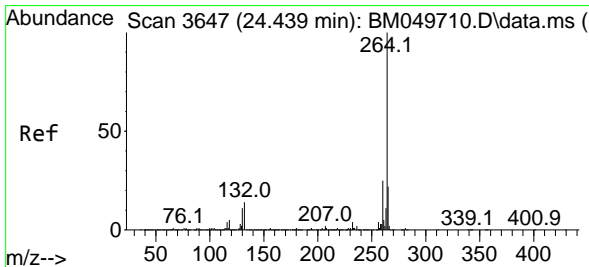
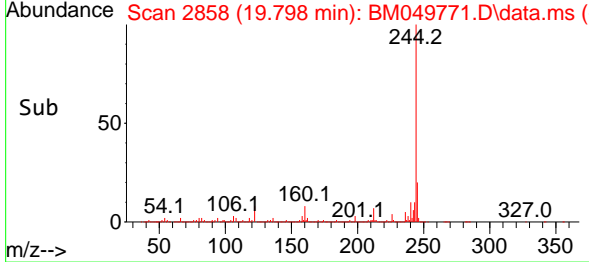
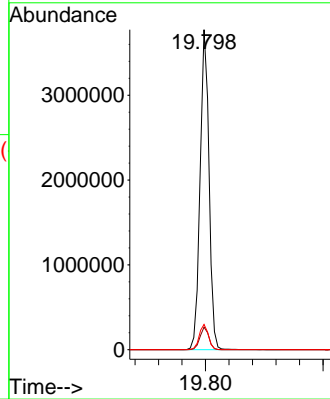
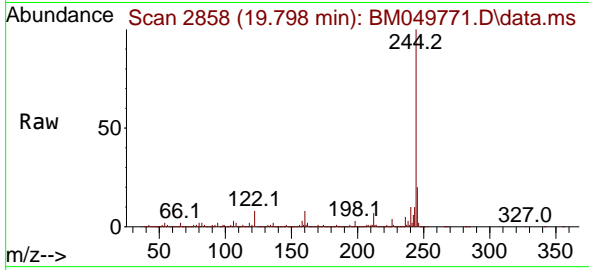


#79
 Terphenyl-d14
 Concen: 70.230 ng
 RT: 19.798 min Scan# 2858
 Delta R.T. -0.012 min
 Lab File: BM049771.D
 Acq: 01 Apr 2025 12:54

Instrument : BNA_M
 ClientSampleId : 1-CONCRETE-SLAB

Tgt Ion:244 Resp: 3963178

Ion	Ratio	Lower	Upper
244	100		
212	7.1	5.8	8.6
122	7.9	6.0	9.0



#86
 Perylene-d12
 Concen: 20.000 ng
 RT: 24.409 min Scan# 3642
 Delta R.T. -0.030 min
 Lab File: BM049771.D
 Acq: 01 Apr 2025 12:54

Tgt Ion:264 Resp: 831342

Ion	Ratio	Lower	Upper
264	100		
260	23.6	19.6	29.4
265	22.0	18.2	27.2

