

Data Path : Z:\HPCHEM1\BNA M\DATA\BM040315\
 Data File : BM000827.D
 Acq On : 03 Apr 2015 03:32
 Operator : TP/IZ
 Sample : MDL-07-S
 Misc : MDL-SOIL-0.1/0.2
 ALS Vial : 18 Sample Multiplier: 1

Instrument :
 BNA_M
 ClientSampleId :

Quant Time: Apr 03 16:28:56 2015
 Quant Method : Z:\HPCHEM1\BNA M\METHODS\SIM-BM040315.M
 Quant Title : ASP BNA STANDARDS FOR 5 POINT CALIBRATION
 QLast Update : Fri Apr 03 13:56:22 2015
 Response via : Initial Calibration

Internal Standards	R.T.	QIon	Response	Conc	Units	Dev(Min)
1) 1,4-Dichlorobenzene-d4	7.63	152	25357	5.00	ng	0.00
11) Naphthalene-d8	10.39	136	119566	5.00	ng	0.00
19) Acenaphthene-d10	14.28	164	59933	5.00	ng	0.00
26) Phenanthrene-d10	17.00	188	124945	5.00	ng	0.00
30) Chrysene-d12	21.21	240	115344	5.00	ng	0.00
34) Perylene-d12	23.40	264	106061	5.00	ng	0.00

System Monitoring Compounds

4) 2-Fluorophenol	5.21	112	87323	12.50	ng	0.00
5) Phenol-d6	6.77	99	146106	10.91	ng	0.00
12) Nitrobenzene-d5	8.77	82	39325	7.05	ng	0.00
20) 2,4,6-Tribromophenol	15.77	330	23649	9.32	ng	0.00
32) Terphenyl-d14	19.65	244	138667	9.99	ng	0.00

Target Compounds

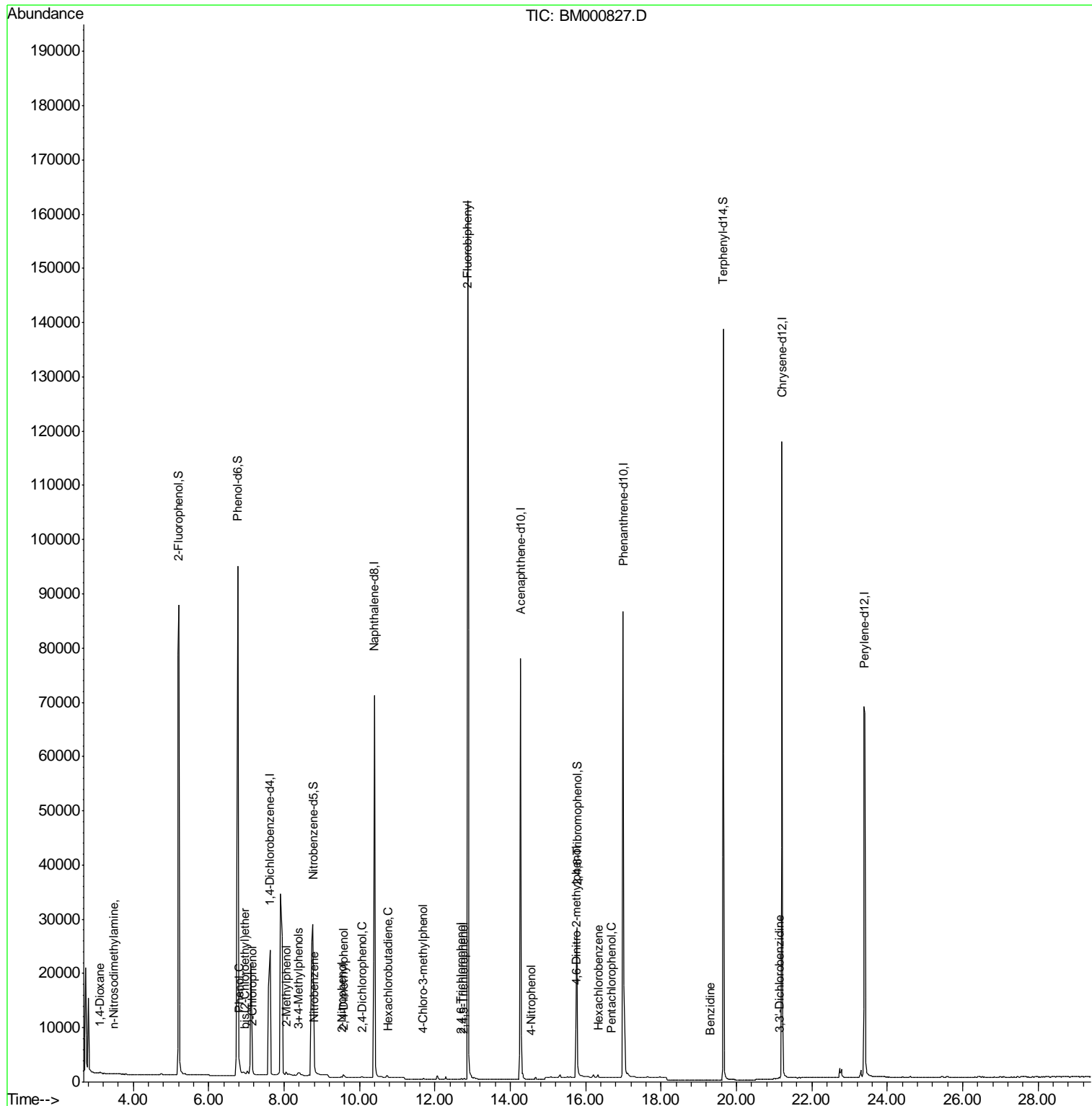
Target Compounds	R.T.	QIon	Response	Conc	Units	Ovalue
2) 1,4-Dioxane	3.12	88	827	0.10	ng	# 51
3) n-Nitrosodimethylamine	3.48	42	262	0.08	ng	# 1
6) 2-Chlorophenol	7.17	128	680	0.27	ng	81
7) Phenol	6.81	94	827	0.08	ng	# 59
8) bis(2-Chloroethyl)ether	6.95	93	556	0.27	ng	# 8
9) 2-Methylphenol	8.06	107	532	0.22	ng	# 75
10) 3+4-Methylphenols	8.38	107	541	0.18	ng	# 70
13) Nitrobenzene	8.80	77	690	0.11	ng	# 81
14) 2-Nitrophenol	9.52	139	191	0.22	ng	# 11
15) 2,4-Dimethylphenol	9.58	122	413	0.06	ng	# 77
16) 2,4-Dichlorophenol	10.07	162	376	0.27	ng	# 76
17) Hexachlorobutadiene	10.75	225	368	0.08	ng	# 86
18) 4-Chloro-3-methylphenol	11.69	107	407	0.07	ng	# 86
21) 2,4,6-Trichlorophenol	12.70	196	186	0.17	ng	# 57
22) 2,4,5-Trichlorophenol	12.77	196	233	0.16	ng	# 82
23) 2-Fluorobiphenyl	12.87	172	171976	9.31	ng	98
25) 4-Nitrophenol	14.54	139	50	0.25	ng	# 85
27) 4,6-Dinitro-2-methylphenol	15.74	198	57	0.17	ng	# 1
28) Hexachlorobenzene	16.33	284	594	0.15	ng	# 66
29) Pentachlorophenol	16.69	266	28	0.46	ng	# 63
31) Benzidine	19.30	184	285	0.09	ng	# 76
33) 3,3'-Dichlorobenzidine	21.14	252	494	0.24	ng	# 69

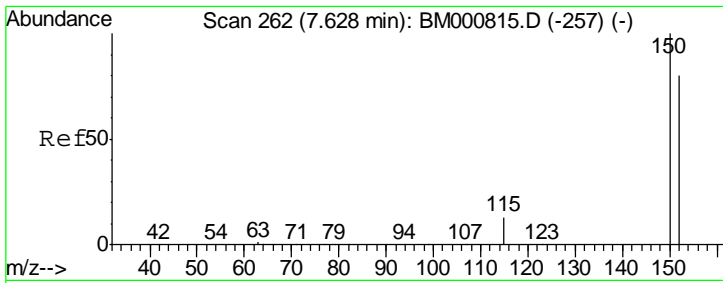
(#) = qualifier out of range (m) = manual integration (+) = signals summed

Data Path : Z:\HPCHEM1\BNA M\DATA\BM040315\
 Data File : BM000827.D
 Acq On : 03 Apr 2015 03:32
 Operator : TP/IZ
 Sample : MDL-07-S
 Misc : MDL-SOIL-0.1/0.2
 ALS Vial : 18 Sample Multiplier: 1

Instrument :
 BNA_M
 ClientSampled :

Quant Time: Apr 03 16:28:56 2015
 Quant Method : Z:\HPCHEM1\BNA M\METHODS\SIM-BM040315.M
 Quant Title : ASP BNA STANDARDS FOR 5 POINT CALIBRATION
 QLast Update : Fri Apr 03 13:56:22 2015
 Response via : Initial Calibration

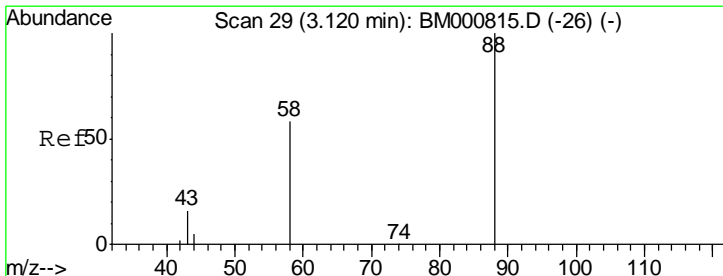
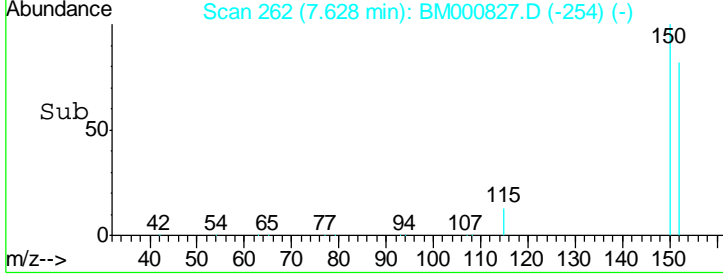
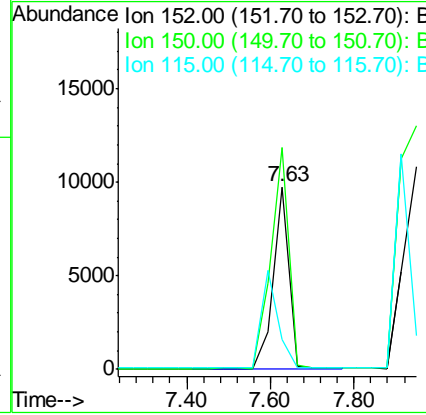
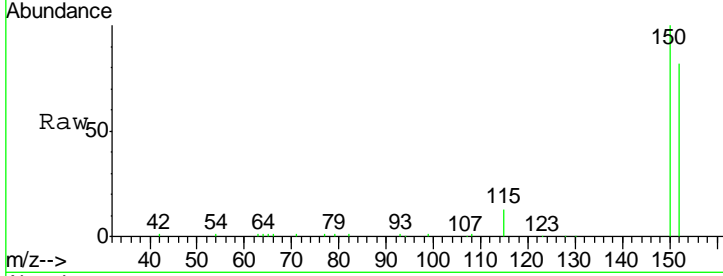




#1
 1,4-Dichlorobenzene-d4
 Concen: 5.00 ng
 RT: 7.63 min Scan# 262
 Delta R.T. -0.00 min
 Lab File: BM000827.D
 Acq: 03 Apr 2015 03:32

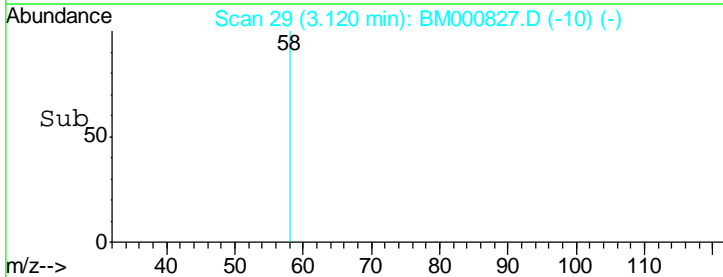
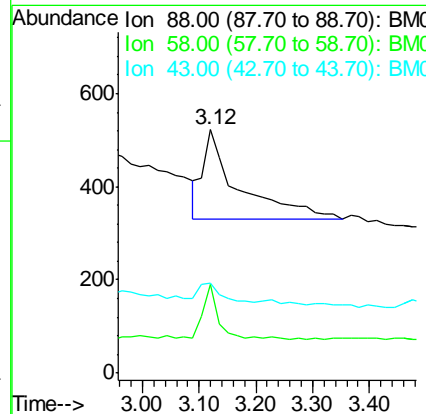
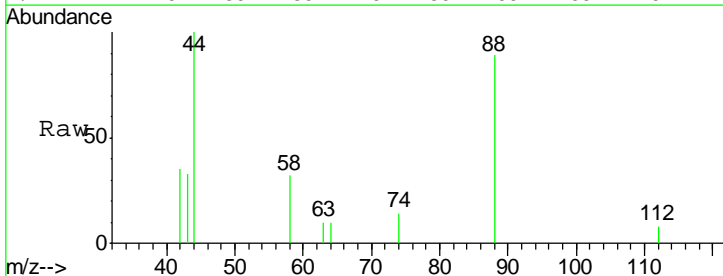
Instrument :
 BNA_M
 ClientSampled :

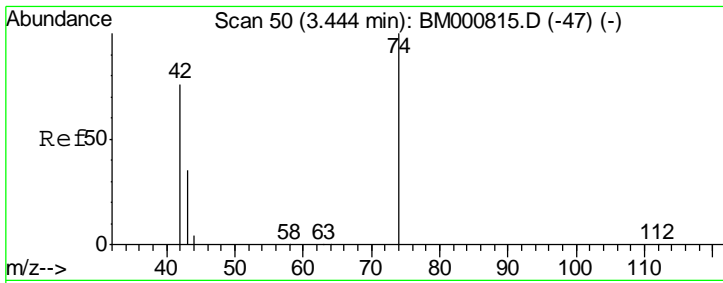
Tgt Ion	Resp	Lower	Upper
152	100		
150	121.4	99.8	149.6
115	16.0	13.5	20.3



#2
 1,4-Dioxane
 Concen: 0.10 ng
 RT: 3.12 min Scan# 29
 Delta R.T. 0.00 min
 Lab File: BM000827.D
 Acq: 03 Apr 2015 03:32

Tgt Ion	Resp	Lower	Upper
88	100		
58	26.6	57.0	85.4#
43	12.5	29.2	43.8#

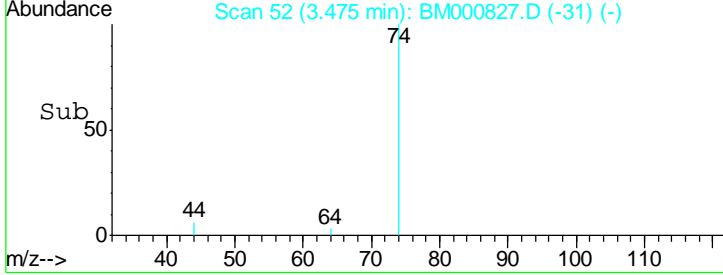
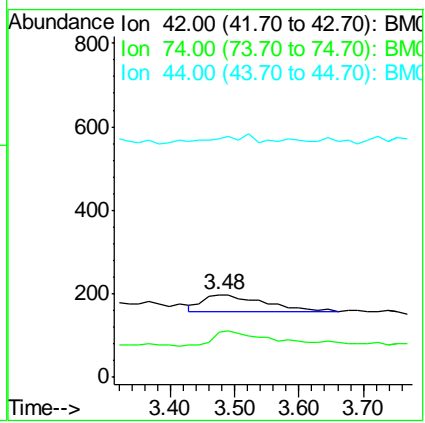
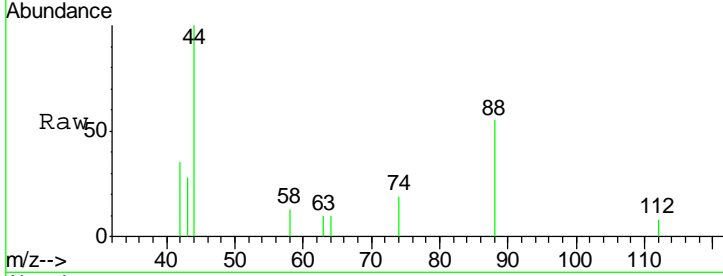




#3
 n-Nitrosodimethylamine
 Concen: 0.08 ng
 RT: 3.48 min Scan# 52
 Delta R.T. 0.03 min
 Lab File: BM000827.D
 Acq: 03 Apr 2015 03:32

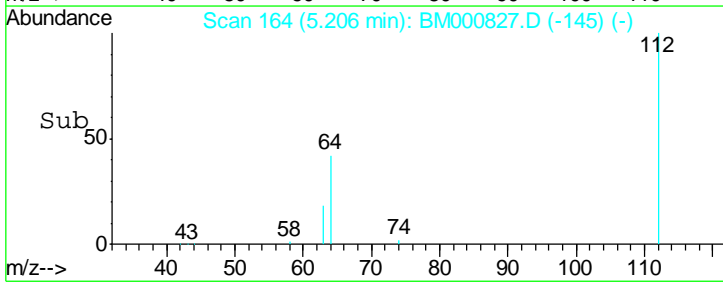
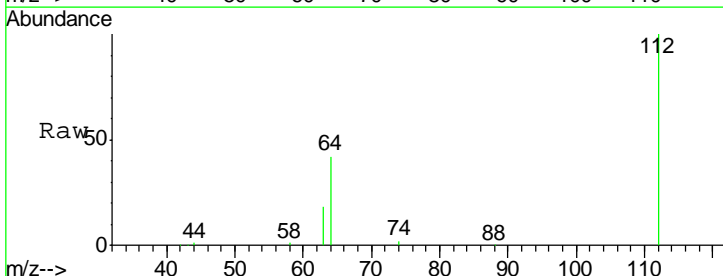
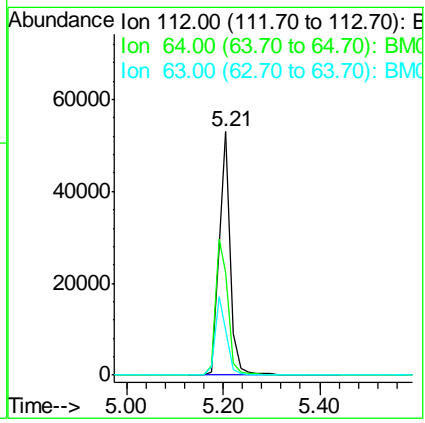
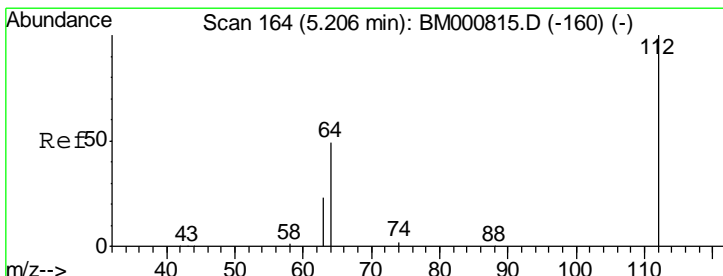
Instrument :
 BNA_M
ClientSampled :

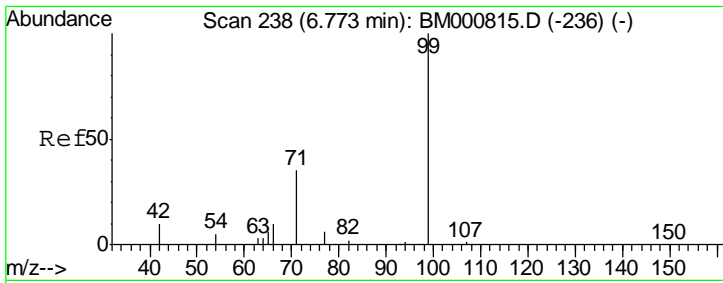
Tgt Ion	Resp	Lower	Upper
42	100		
74	55.3	93.1	139.7#
44	286.9	56.6	85.0#



#4
 2-Fluorophenol
 Concen: 12.50 ng
 RT: 5.21 min Scan# 164
 Delta R.T. -0.00 min
 Lab File: BM000827.D
 Acq: 03 Apr 2015 03:32

Tgt Ion	Resp	Lower	Upper
112	100		
64	42.1	40.3	60.5
63	18.4	19.0	28.4#

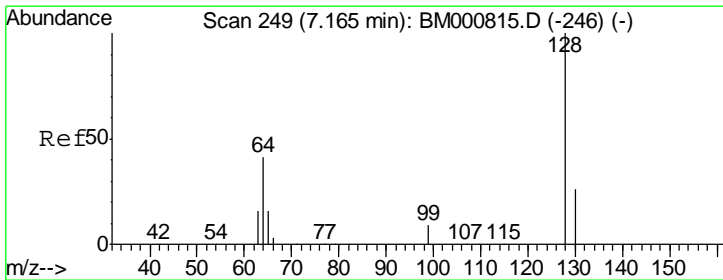
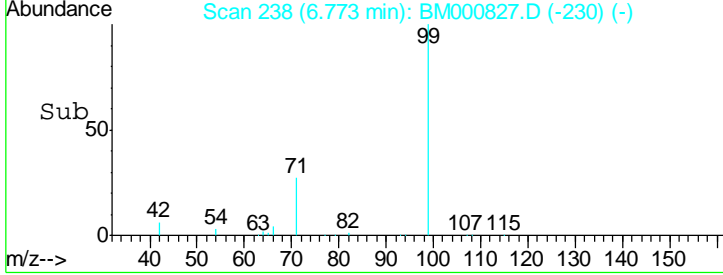
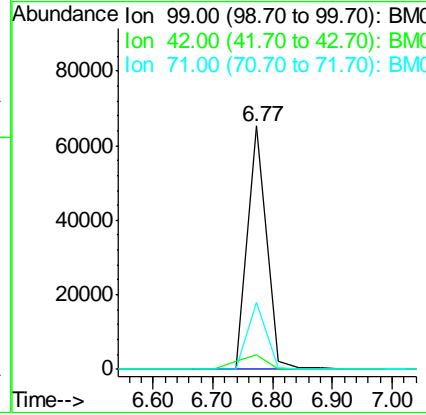
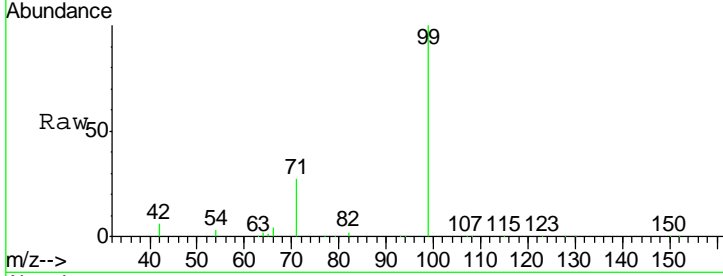




#5
 Phenol-d6
 Concen: 10.91 ng
 RT: 6.77 min Scan# 238
 Delta R.T. 0.00 min
 Lab File: BM000827.D
 Acq: 03 Apr 2015 03:32

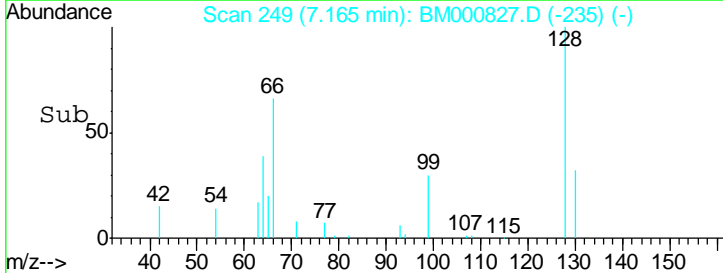
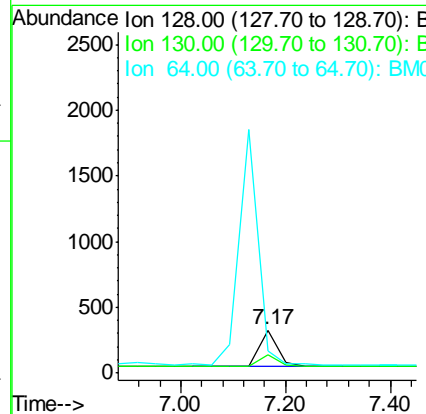
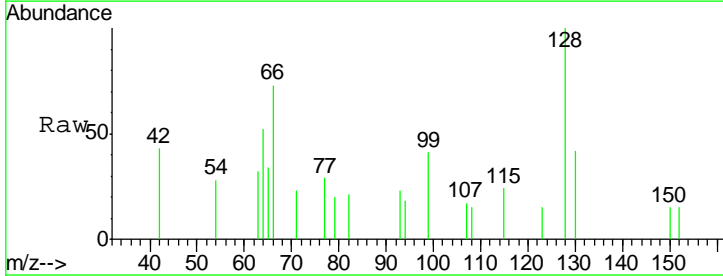
Instrument :
 BNA_M
 ClientSampled :

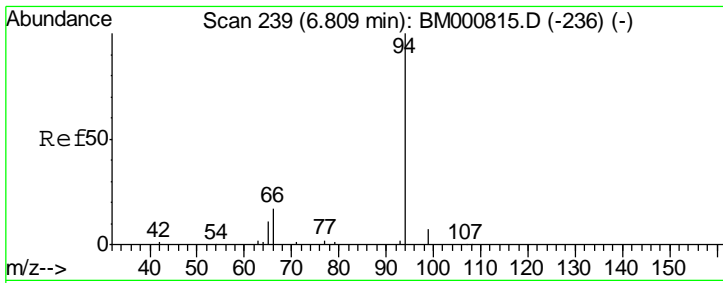
Tgt Ion	Resp	Lower	Upper
99	146106		
42	6.0	10.2	15.4#
71	27.3	28.6	43.0#



#6
 2-Chlorophenol
 Concen: 0.27 ng
 RT: 7.17 min Scan# 249
 Delta R.T. 0.00 min
 Lab File: BM000827.D
 Acq: 03 Apr 2015 03:32

Tgt Ion	Resp	Lower	Upper
128	680		
130	41.7	7.6	47.6
64	52.2	23.1	63.1

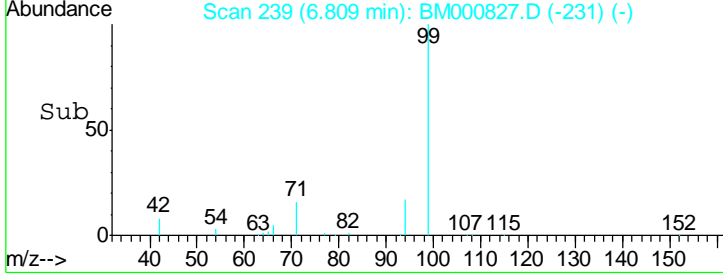
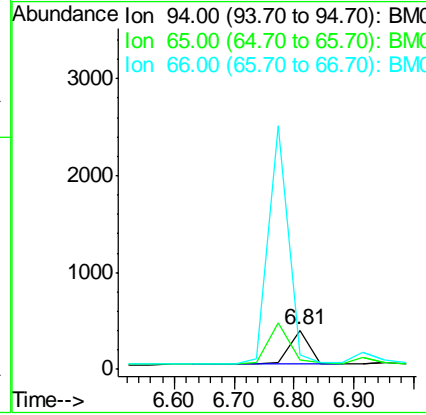
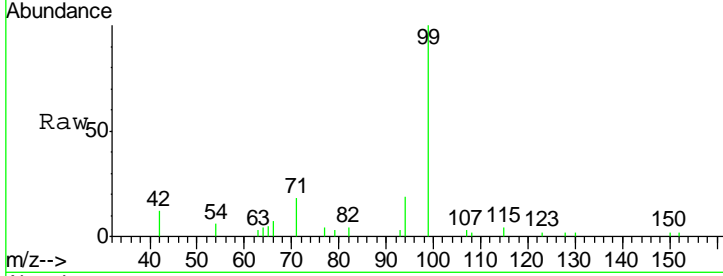




#7
 Phenol
 Concen: 0.08 ng
 RT: 6.81 min Scan# 239
 Delta R.T. -0.00 min
 Lab File: BM000827.D
 Acq: 03 Apr 2015 03:32

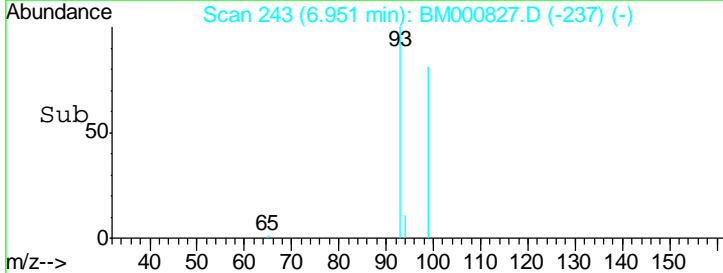
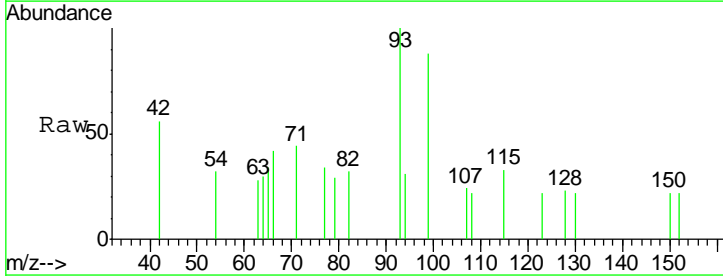
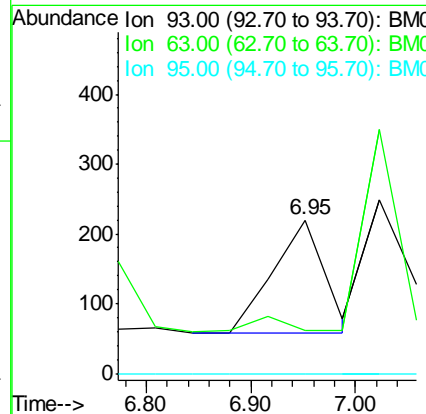
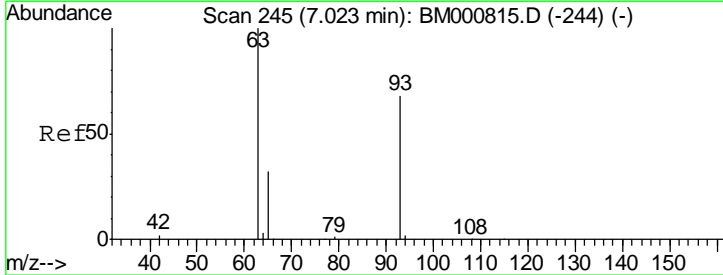
Instrument :
 BNA_M
 ClientSampled :

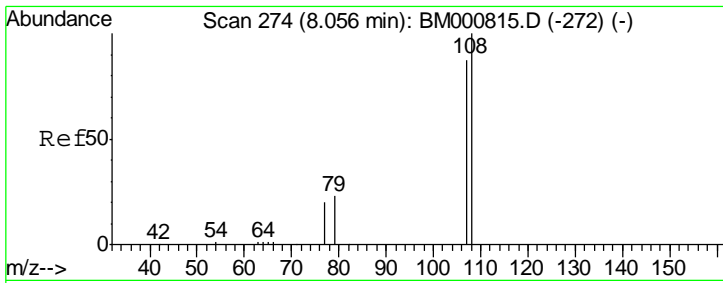
Tgt Ion	Resp	Lower	Upper
94	100		
65	25.2	0.0	32.0
66	37.7	0.0	37.6#



#8
 bis(2-Chloroethyl)ether
 Concen: 0.27 ng
 RT: 6.95 min Scan# 243
 Delta R.T. -0.07 min
 Lab File: BM000827.D
 Acq: 03 Apr 2015 03:32

Tgt Ion	Resp	Lower	Upper
93	100		
63	27.7	118.9	158.9#
95	0.0	0.0	20.0

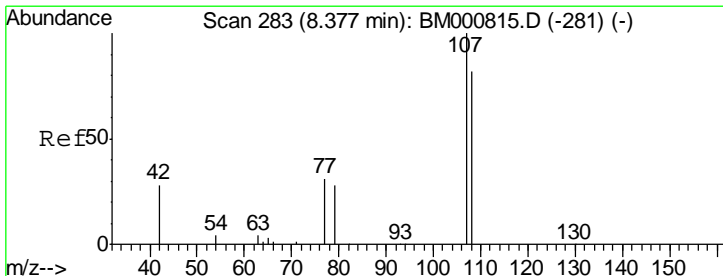
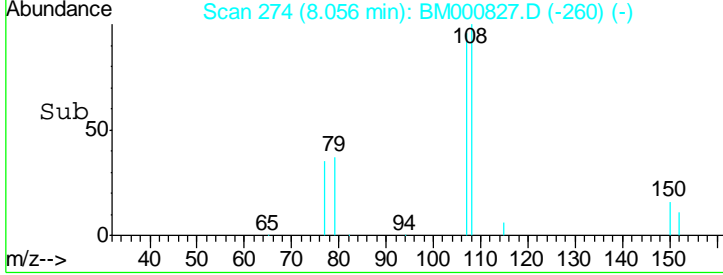
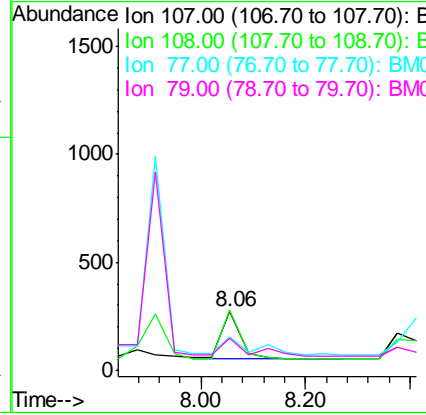
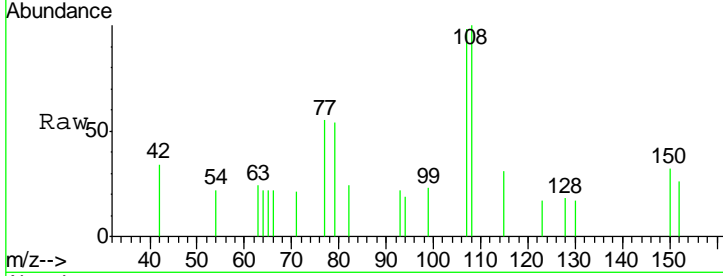




#9
 2-Methylphenol
 Concen: 0.22 ng
 RT: 8.06 min Scan# 274
 Delta R.T. -0.00 min
 Lab File: BM000827.D
 Acq: 03 Apr 2015 03:32

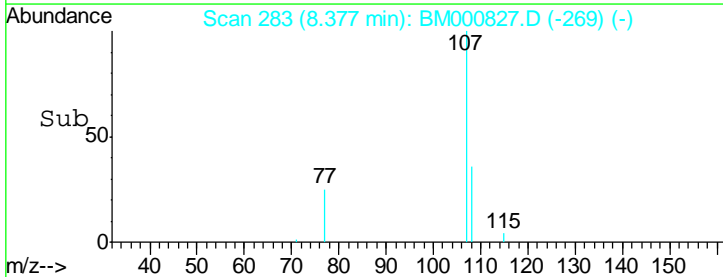
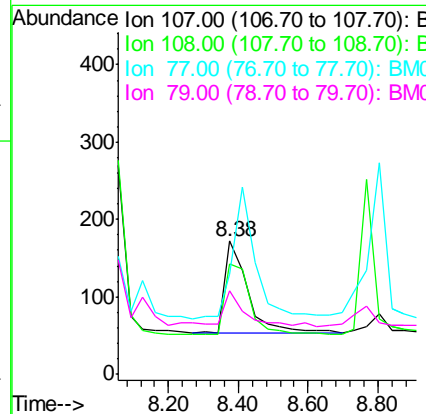
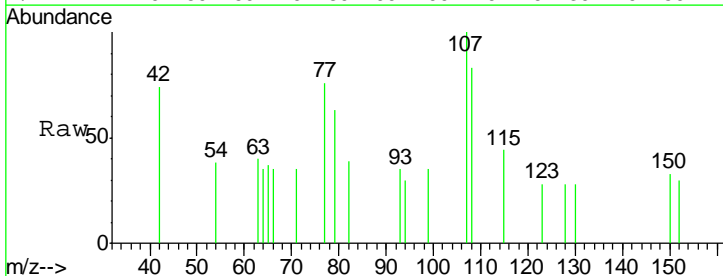
Instrument :
 BNA_M
 ClientSampled :

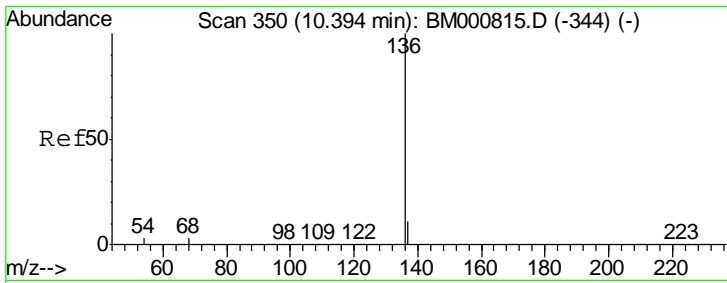
Tgt Ion	Resp	Lower	Upper
107	100		
108	102.2	92.0	138.0
77	56.3	20.6	31.0#
79	54.8	22.9	34.3#



#10
 3+4-Methylphenols
 Concen: 0.18 ng
 RT: 8.38 min Scan# 283
 Delta R.T. 0.00 min
 Lab File: BM000827.D
 Acq: 03 Apr 2015 03:32

Tgt Ion	Resp	Lower	Upper
107	100		
108	82.6	62.6	102.6
77	75.6	12.8	52.8#
79	62.8	10.3	50.3#

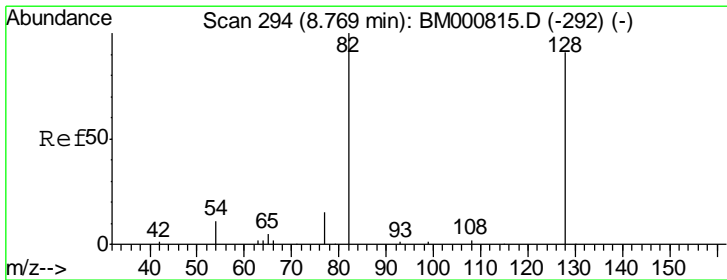
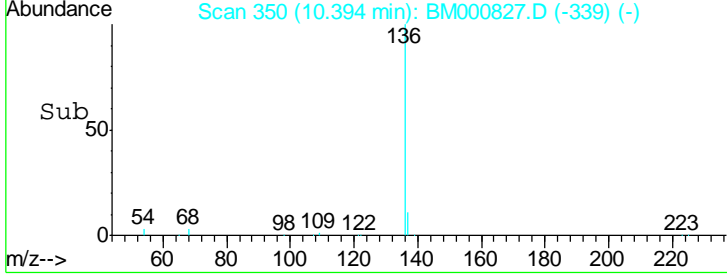
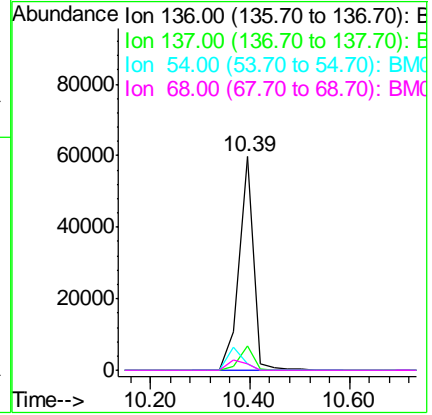
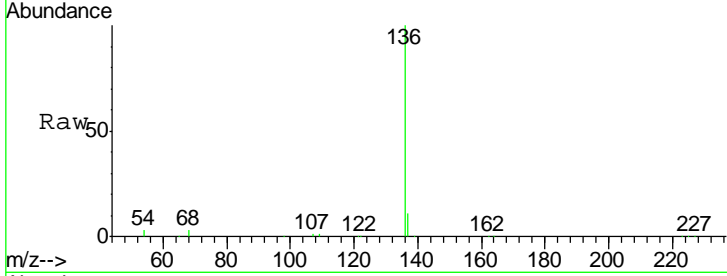




#11
 Naphthalene-d8
 Concen: 5.00 ng
 RT: 10.39 min Scan# 350
 Delta R.T. -0.00 min
 Lab File: BM000827.D
 Acq: 03 Apr 2015 03:32

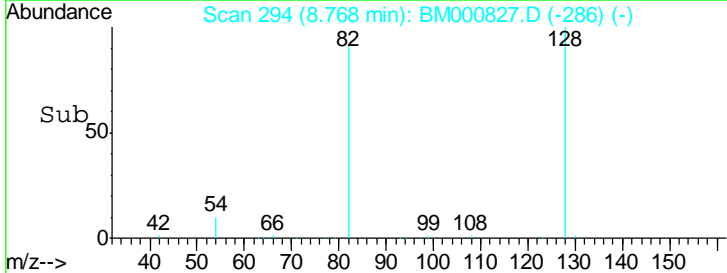
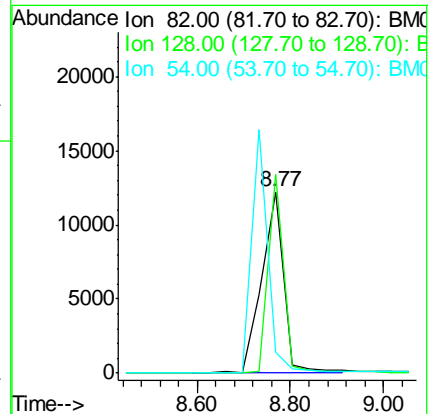
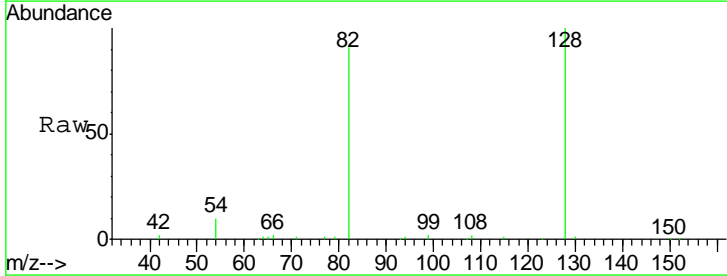
Instrument :
 BNA_M
 ClientSampled :

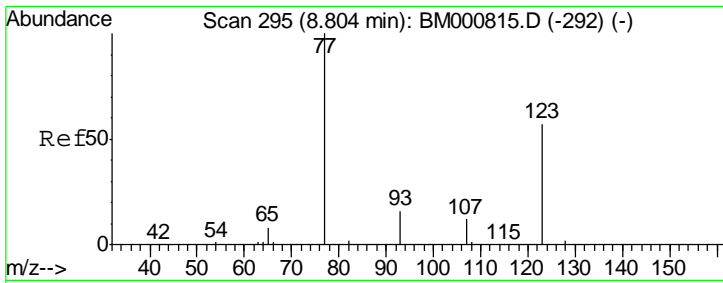
Tgt Ion	Resp	Lower	Upper
136	119566		
137	11.5	9.1	13.7
54	2.8	2.2	3.4
68	2.7	2.2	3.2



#12
 Nitrobenzene-d5
 Concen: 7.05 ng
 RT: 8.77 min Scan# 294
 Delta R.T. -0.00 min
 Lab File: BM000827.D
 Acq: 03 Apr 2015 03:32

Tgt Ion	Resp	Lower	Upper
82	39325		
128	109.3	72.5	108.7#
54	11.3	11.8	17.8#

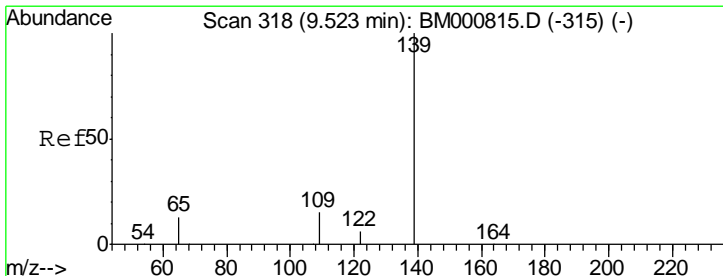
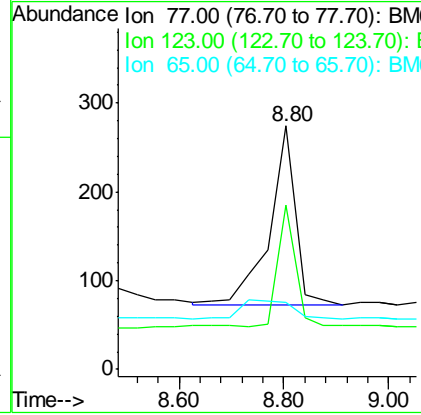
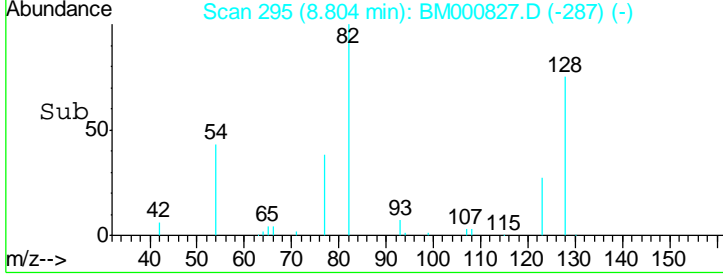
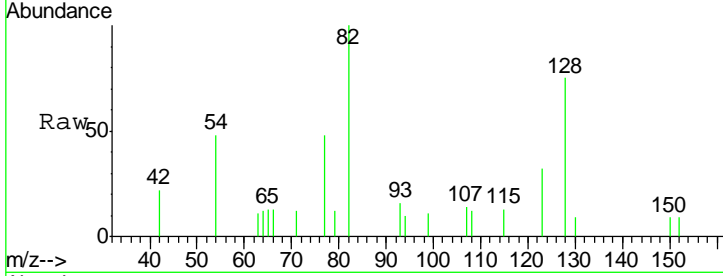




#13
 Nitrobenzene
 Concen: 0.11 ng
 RT: 8.80 min Scan# 295
 Delta R.T. -0.00 min
 Lab File: BM000827.D
 Acq: 03 Apr 2015 03:32

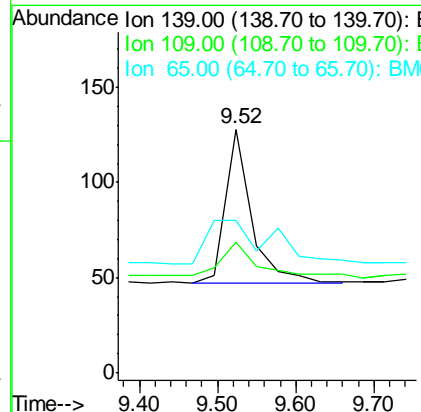
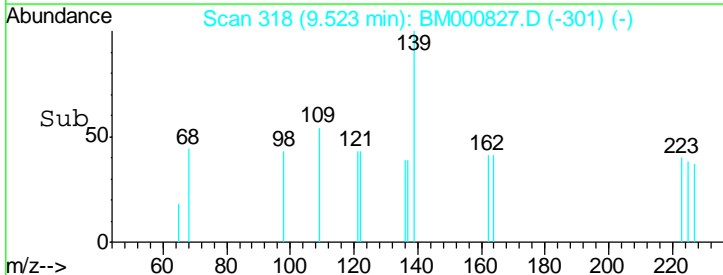
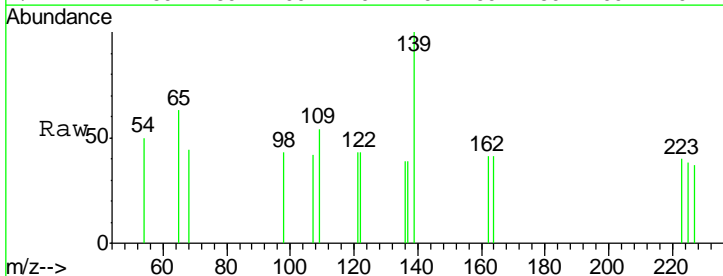
Instrument :
 BNA_M
 ClientSampled :

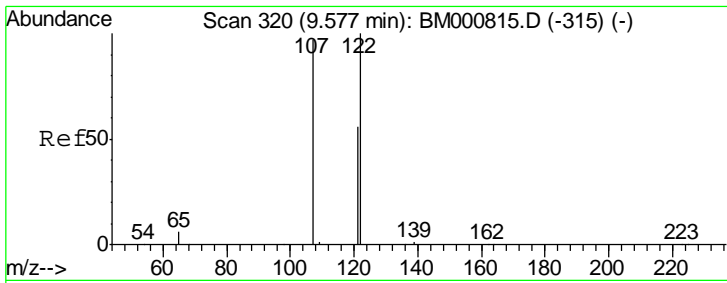
Tgt Ion	Resp	Lower	Upper
77	100		
123	67.5	45.8	68.6
65	27.7	8.2	12.4



#14
 2-Nitrophenol
 Concen: 0.22 ng
 RT: 9.52 min Scan# 318
 Delta R.T. 0.00 min
 Lab File: BM000827.D
 Acq: 03 Apr 2015 03:32

Tgt Ion	Resp	Lower	Upper
139	100		
109	53.9	15.0	22.6
65	62.5	14.2	21.4

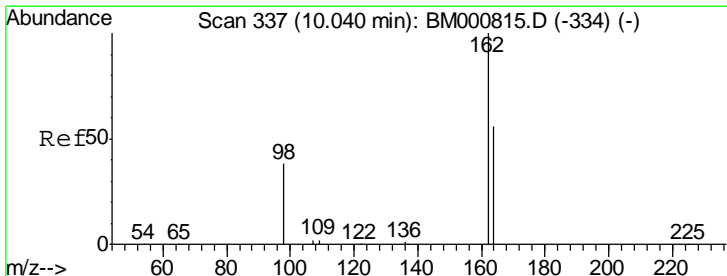
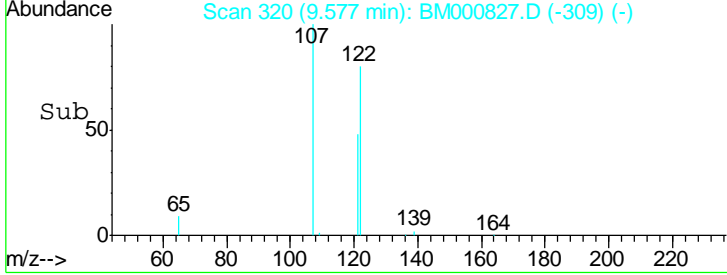
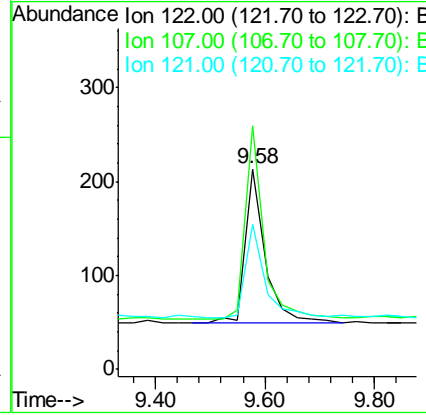
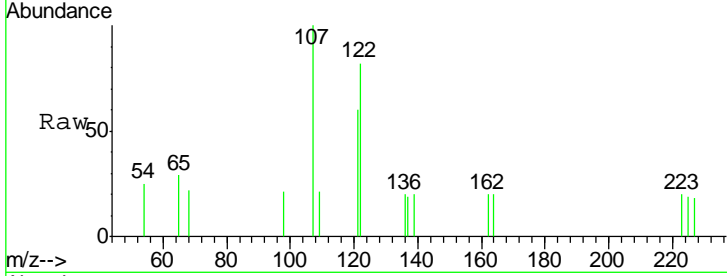




#15
 2,4-Dimethylphenol
 Concen: 0.06 ng
 RT: 9.58 min Scan# 320
 Delta R.T. -0.00 min
 Lab File: BM000827.D
 Acq: 03 Apr 2015 03:32

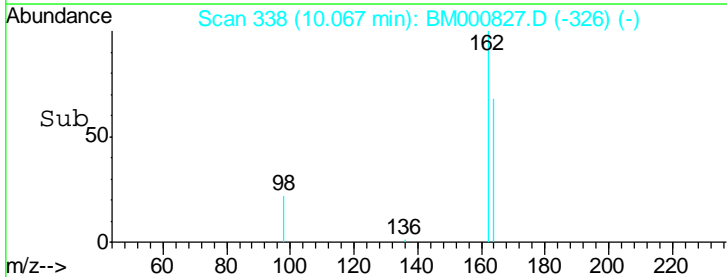
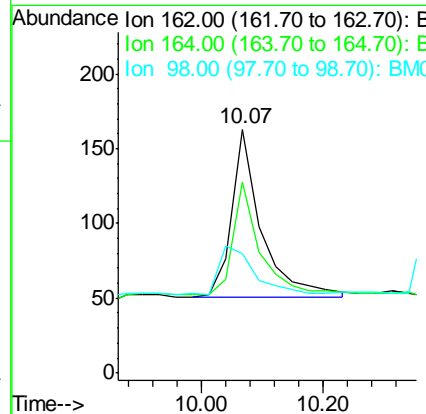
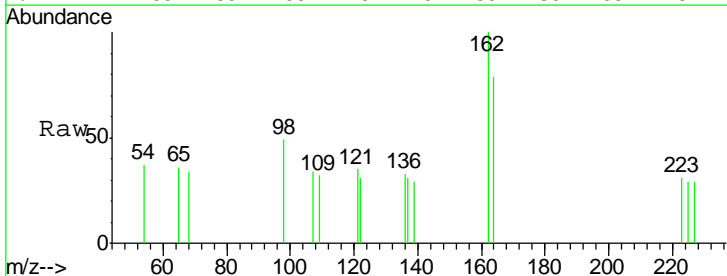
Instrument :
 BNA_M
 ClientSampled :

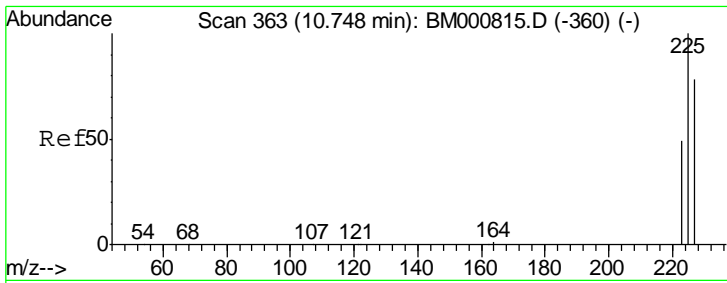
Tgt Ion	Resp	Lower	Upper
122	413		
107	121.6	78.2	117.4#
121	72.8	45.4	68.0#



#16
 2,4-Dichlorophenol
 Concen: 0.27 ng
 RT: 10.07 min Scan# 338
 Delta R.T. 0.03 min
 Lab File: BM000827.D
 Acq: 03 Apr 2015 03:32

Tgt Ion	Resp	Lower	Upper
162	376		
164	78.5	37.1	77.1#
98	49.1	19.5	59.5

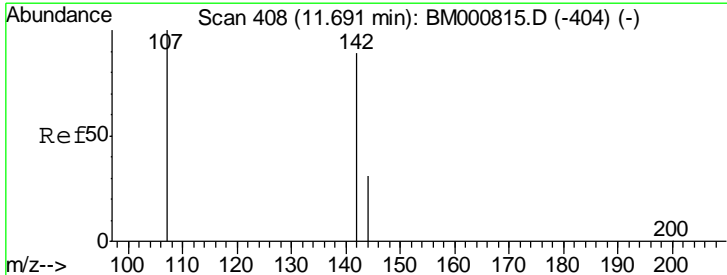
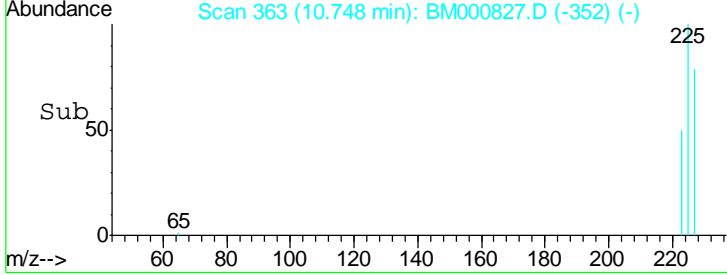
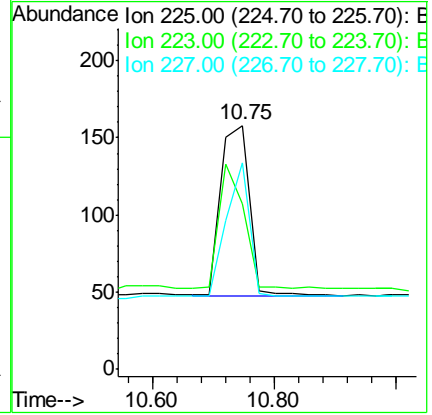
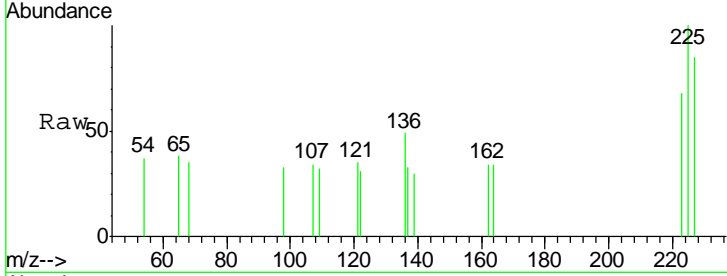




#17
 Hexachlorobutadiene
 Concen: 0.08 ng
 RT: 10.75 min Scan# 363
 Delta R.T. -0.00 min
 Lab File: BM000827.D
 Acq: 03 Apr 2015 03:32

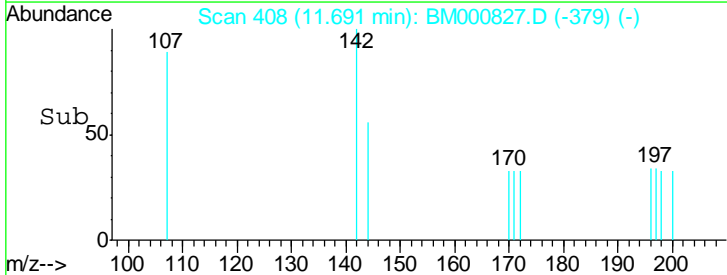
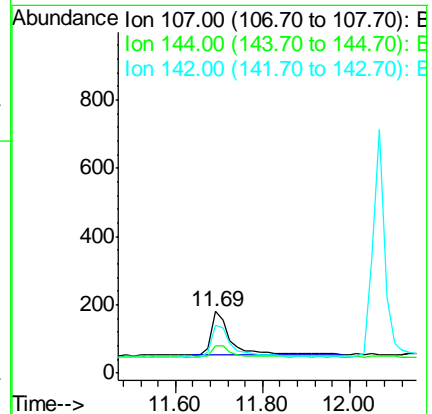
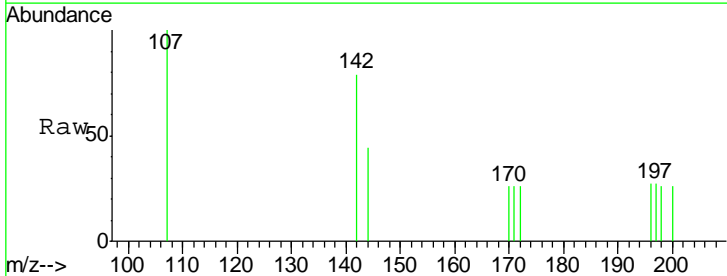
Instrument :
 BNA_M
 ClientSampled :

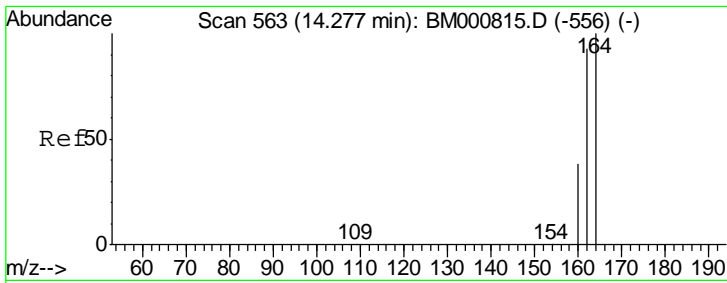
Tgt Ion	Resp	Lower	Upper
225	100		
223	67.7	40.8	61.2#
227	84.8	62.8	94.2



#18
 4-Chloro-3-methylphenol
 Concen: 0.07 ng
 RT: 11.69 min Scan# 408
 Delta R.T. -0.00 min
 Lab File: BM000827.D
 Acq: 03 Apr 2015 03:32

Tgt Ion	Resp	Lower	Upper
107	100		
144	43.9	25.8	38.8#
142	78.9	71.3	106.9

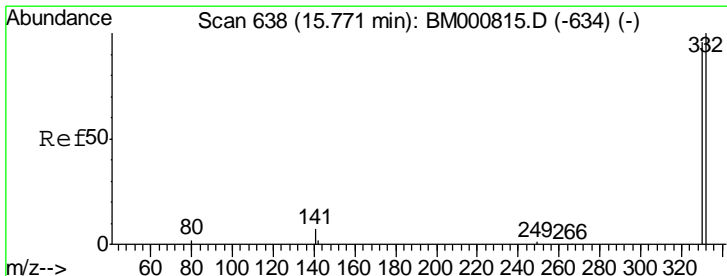
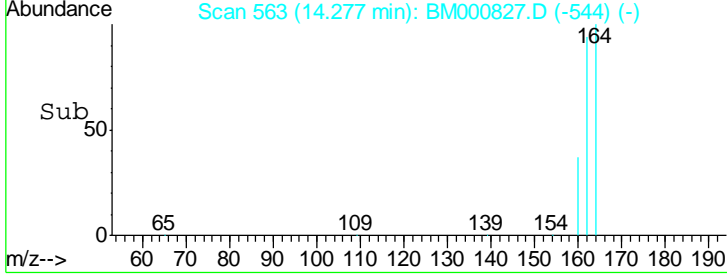
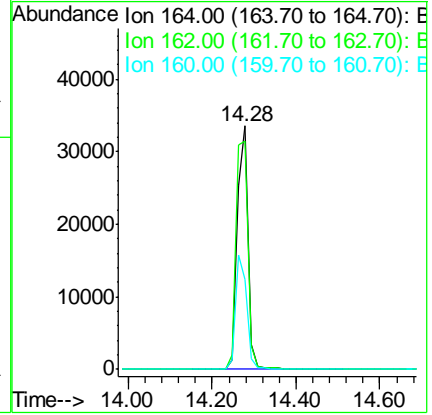
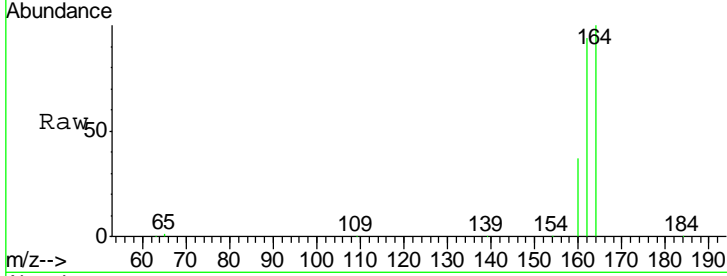




#19
 Acenaphthene-d10
 Concen: 5.00 ng
 RT: 14.28 min Scan# 563
 Delta R.T. -0.00 min
 Lab File: BM000827.D
 Acq: 03 Apr 2015 03:32

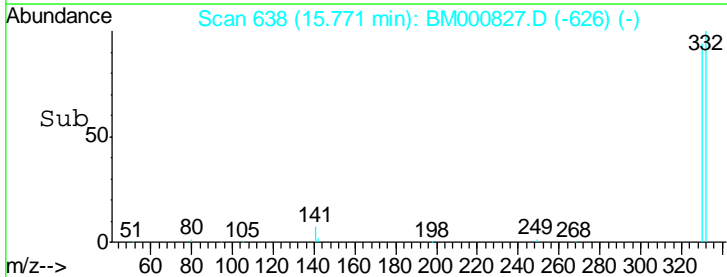
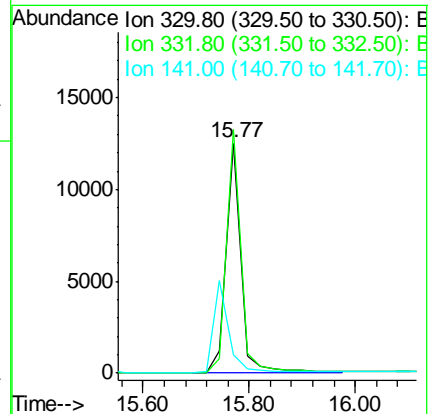
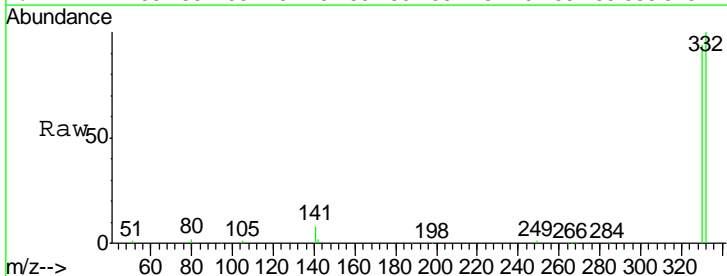
Instrument :
 BNA_M
 ClientSampled :

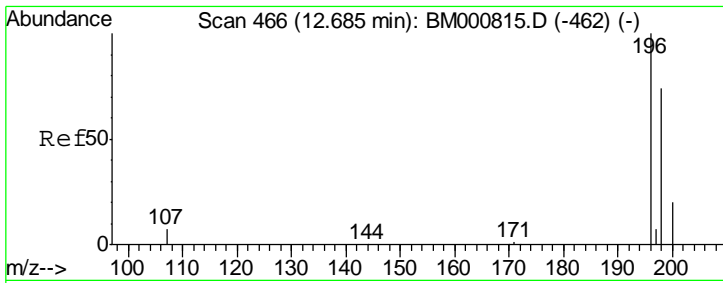
Tgt Ion	Resp	Lower	Upper
164	100		
162	93.5	74.2	111.2
160	37.2	30.4	45.6



#20
 2,4,6-Tribromophenol
 Concen: 9.32 ng
 RT: 15.77 min Scan# 638
 Delta R.T. 0.00 min
 Lab File: BM000827.D
 Acq: 03 Apr 2015 03:32

Tgt Ion	Resp	Lower	Upper
330	100		
332	102.8	78.7	118.1
141	0.0	0.0	0.0

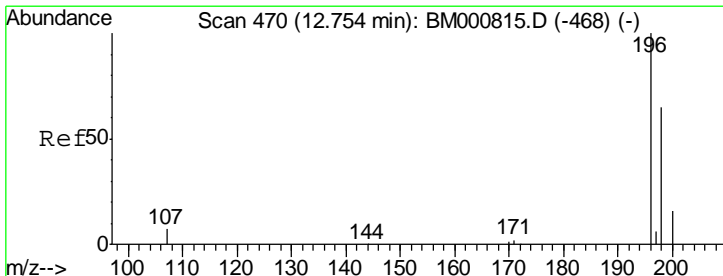
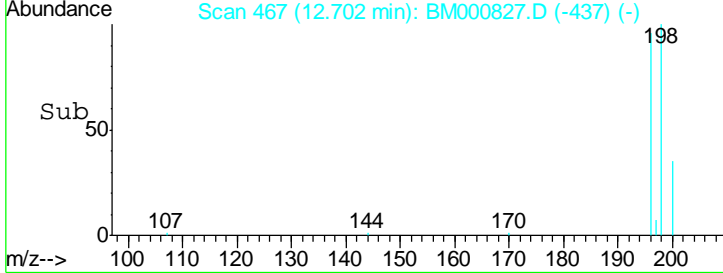
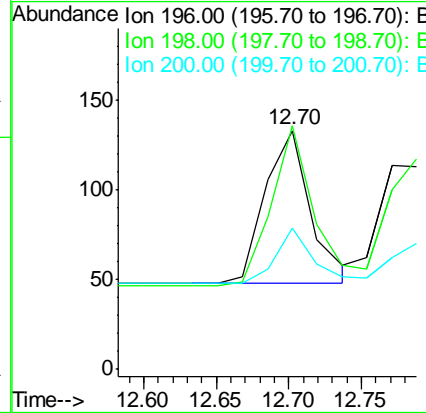
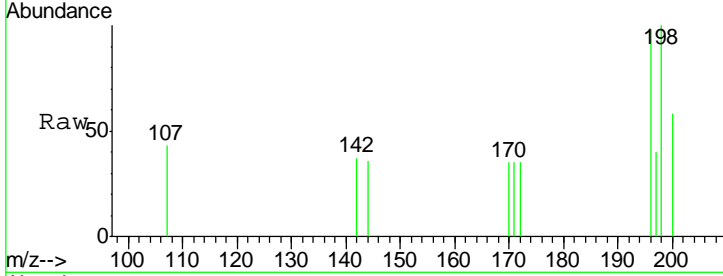




#21
 2,4,6-Trichlorophenol
 Concen: 0.17 ng
 RT: 12.70 min Scan# 467
 Delta R.T. 0.02 min
 Lab File: BM000827.D
 Acq: 03 Apr 2015 03:32

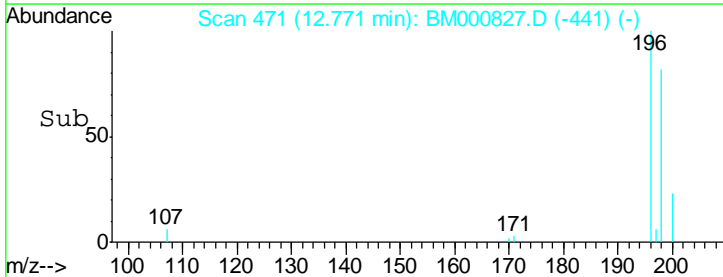
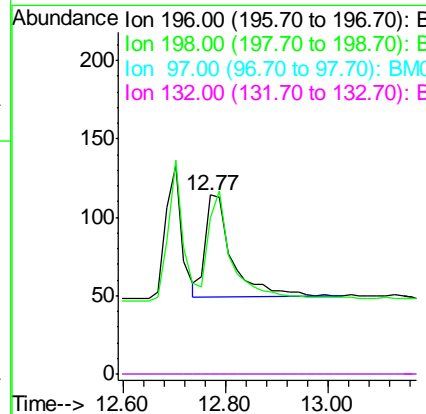
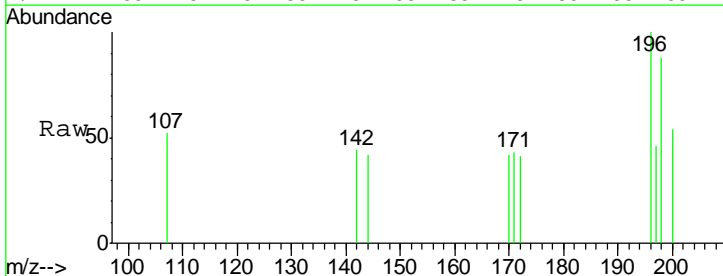
Instrument :
 BNA_M
 ClientSampleId :

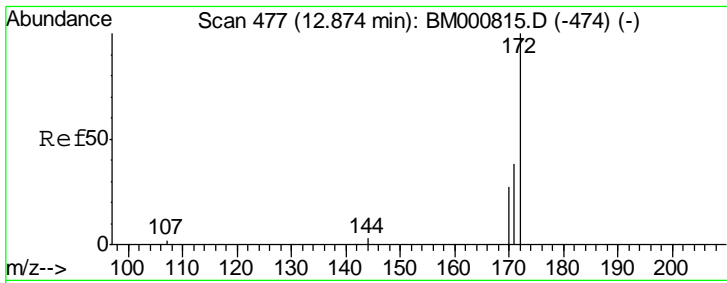
Tgt Ion	Resp	Lower	Upper
196	100		
198	102.3	59.5	89.3#
200	59.4	17.4	26.0#



#22
 2,4,5-Trichlorophenol
 Concen: 0.16 ng
 RT: 12.77 min Scan# 471
 Delta R.T. 0.02 min
 Lab File: BM000827.D
 Acq: 03 Apr 2015 03:32

Tgt Ion	Resp	Lower	Upper
196	100		
198	87.7	57.9	86.9#
97	0.0	0.0	0.0
132	0.0	0.0	0.0

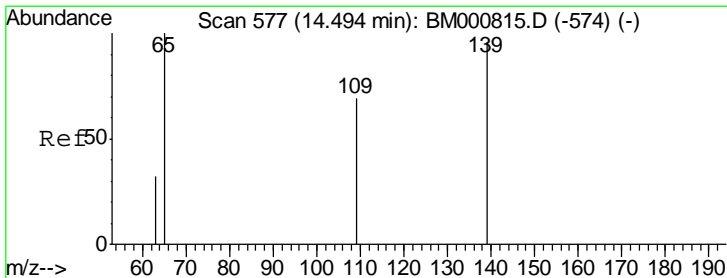
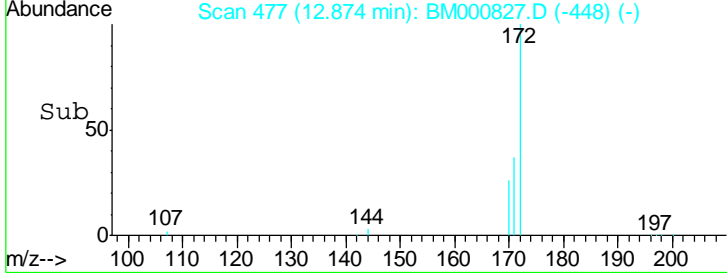
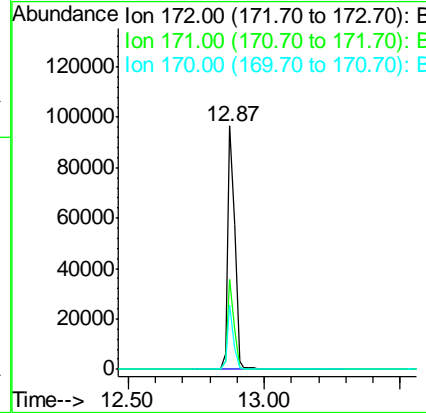
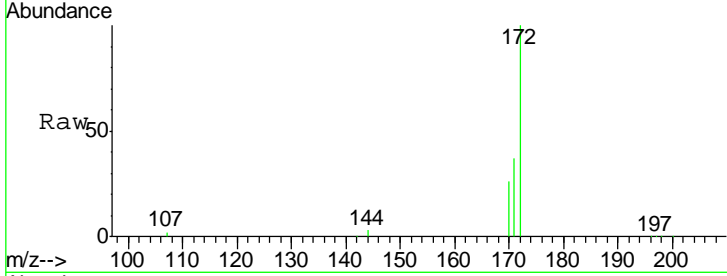




#23
 2-Fluorobiphenyl
 Concen: 9.31 ng
 RT: 12.87 min Scan# 477
 Delta R.T. -0.00 min
 Lab File: BM000827.D
 Acq: 03 Apr 2015 03:32

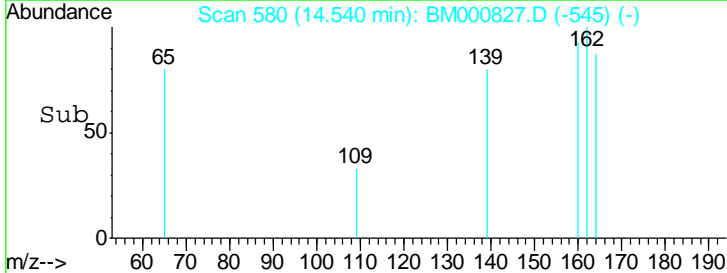
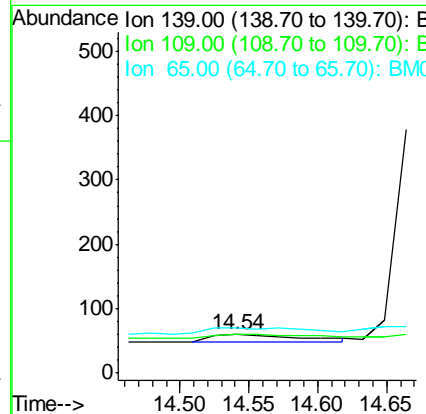
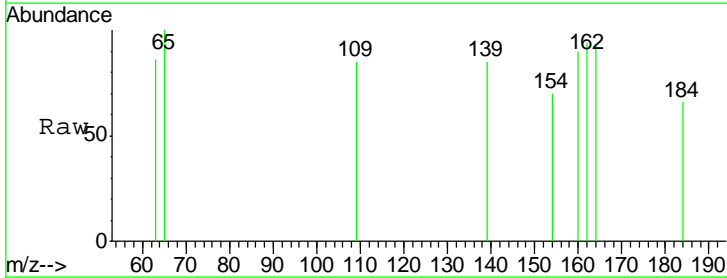
Instrument :
 BNA_M
 ClientSampled :

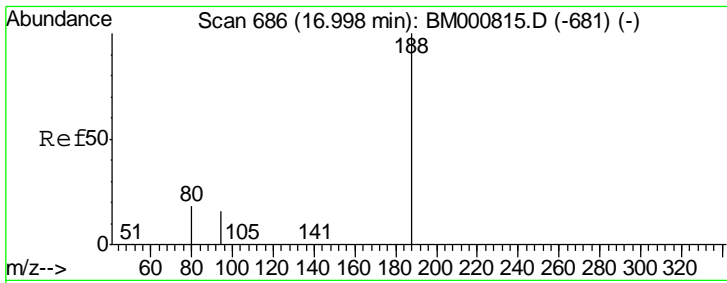
Tgt Ion	Resp	Lower	Upper
172	171976		
171	37.0	30.6	46.0
170	26.5	22.2	33.2



#25
 4-Nitrophenol
 Concen: 0.25 ng
 RT: 14.54 min Scan# 580
 Delta R.T. 0.05 min
 Lab File: BM000827.D
 Acq: 03 Apr 2015 03:32

Tgt Ion	Resp	Lower	Upper
139	50		
109	100.0	58.2	98.2#
65	118.3	90.4	130.4

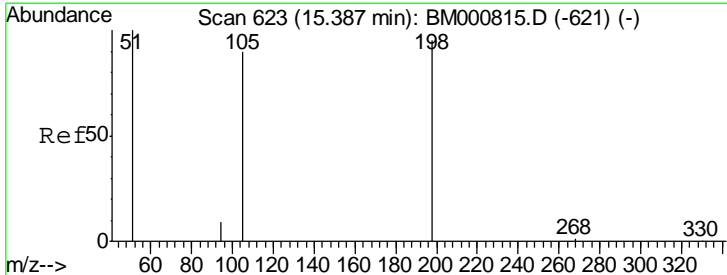
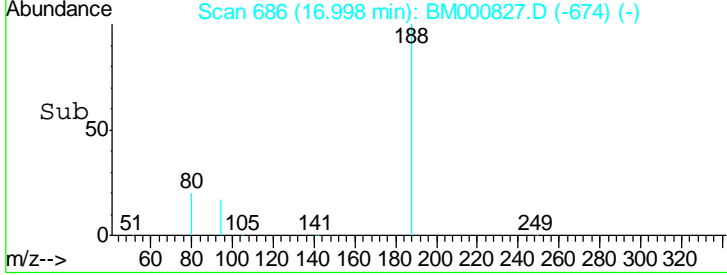
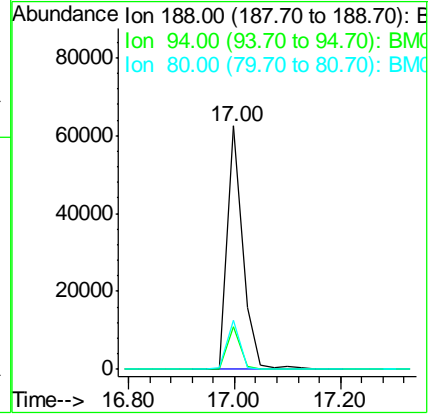
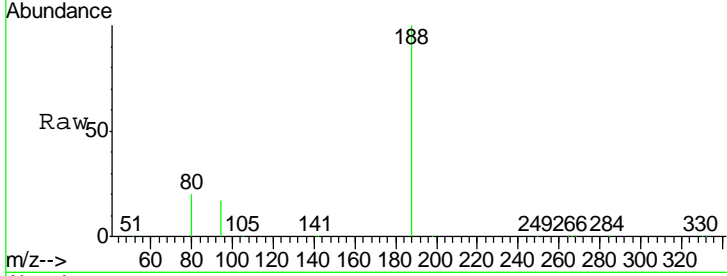




#26
 Phenanthrene-d10
 Concen: 5.00 ng
 RT: 17.00 min Scan# 686
 Delta R.T. -0.00 min
 Lab File: BM000827.D
 Acq: 03 Apr 2015 03:32

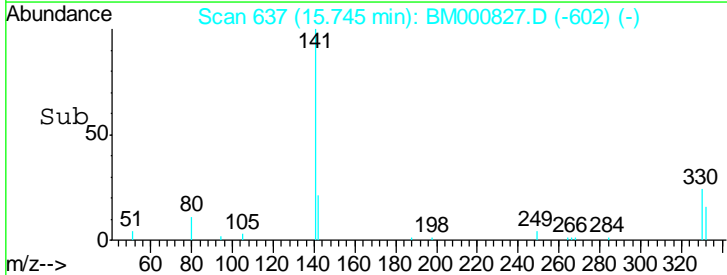
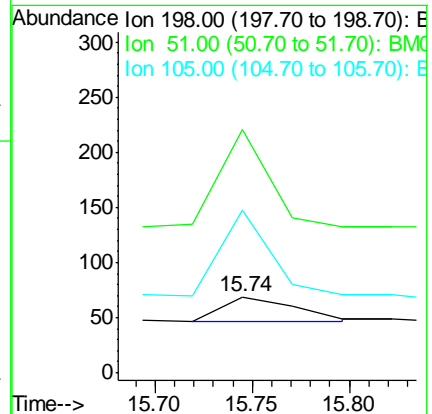
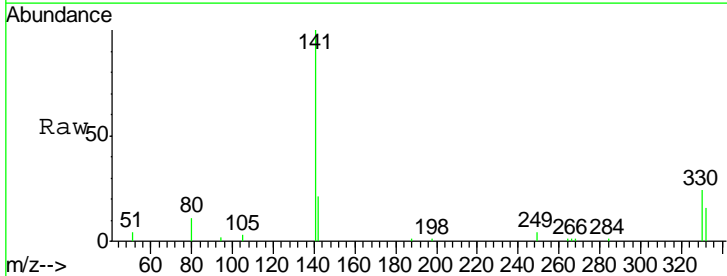
Instrument :
 BNA_M
 ClientSampled :

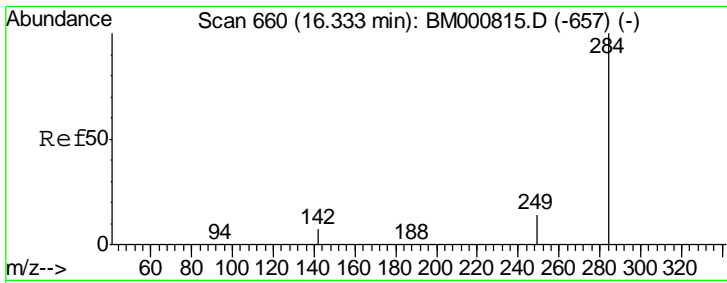
Tgt Ion	Resp	Lower	Upper
188	124945		
94	17.3	13.0	19.6
80	20.0	14.7	22.1



#27
 4,6-Dinitro-2-methylphenol
 Concen: 0.17 ng
 RT: 15.74 min Scan# 637
 Delta R.T. 0.36 min
 Lab File: BM000827.D
 Acq: 03 Apr 2015 03:32

Tgt Ion	Resp	Lower	Upper
198	57		
51	320.3	139.3	179.3#
105	214.5	88.8	128.8#

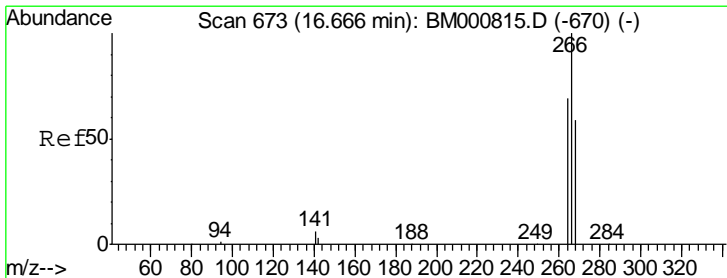
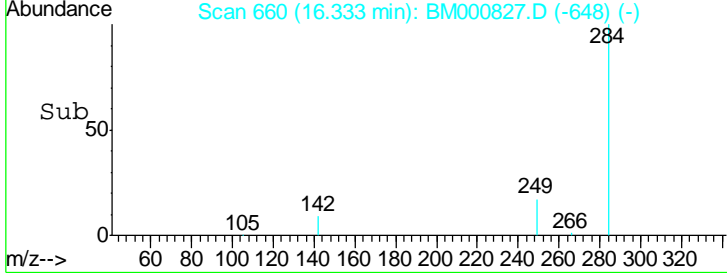
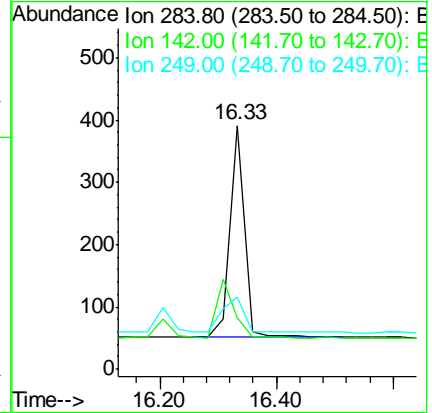
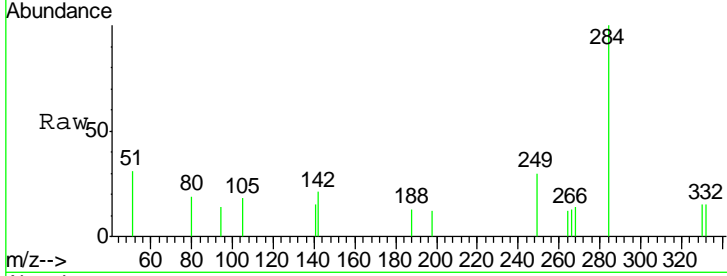




#28
 Hexachlorobenzene
 Concen: 0.15 ng
 RT: 16.33 min Scan# 660
 Delta R.T. 0.00 min
 Lab File: BM000827.D
 Acq: 03 Apr 2015 03:32

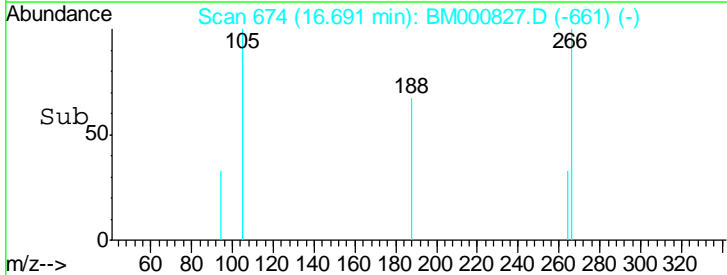
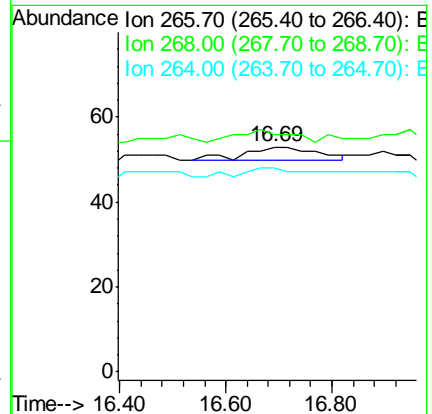
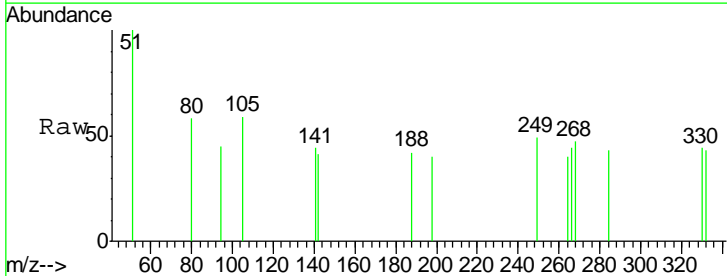
Instrument :
 BNA_M
 ClientSampled :

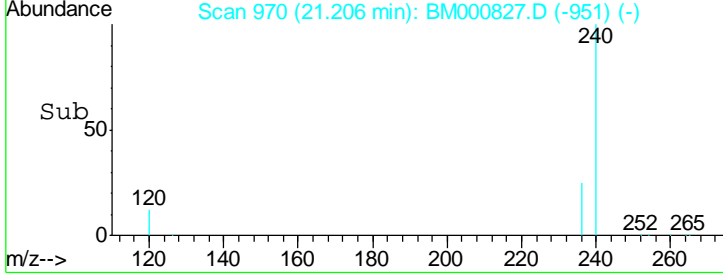
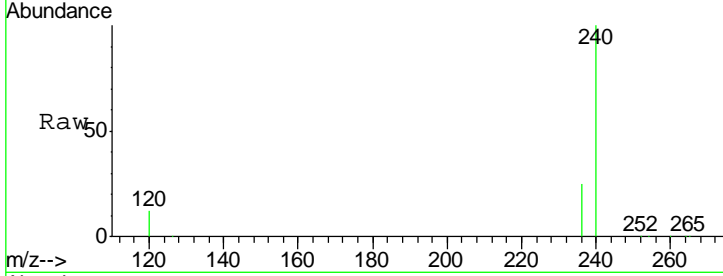
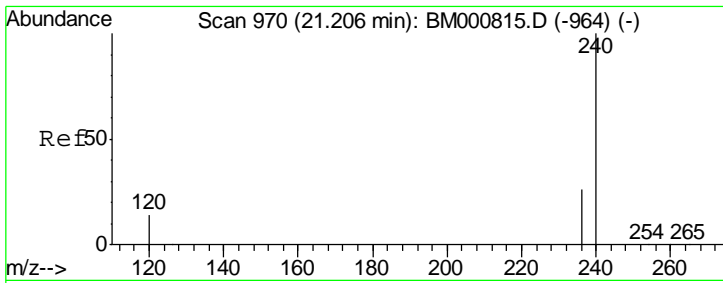
Tgt Ion	Resp	Lower	Upper
284	594		
142	21.0	6.5	9.7#
249	29.7	12.6	18.8#



#29
 Pentachlorophenol
 Concen: 0.46 ng
 RT: 16.69 min Scan# 674
 Delta R.T. 0.03 min
 Lab File: BM000827.D
 Acq: 03 Apr 2015 03:32

Tgt Ion	Resp	Lower	Upper
266	28		
268	105.7	51.4	77.0#
264	90.6	57.1	85.7#

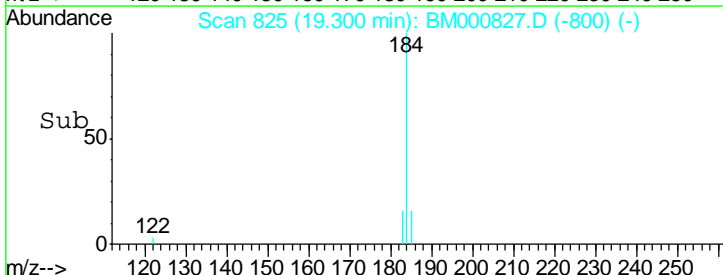
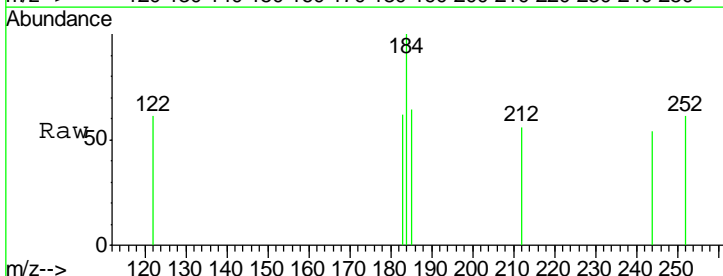
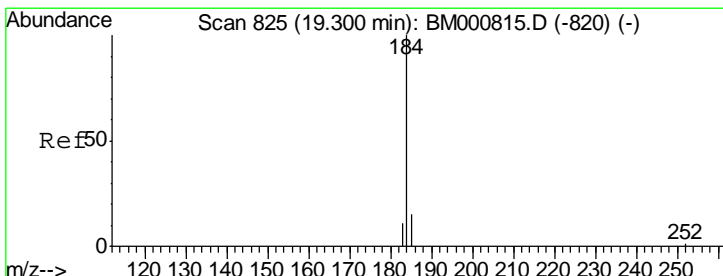
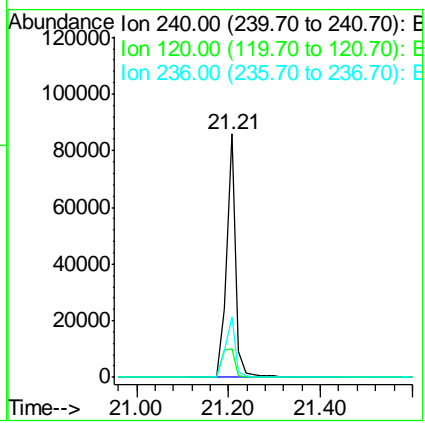




#30
 Chrysene-d12
 Concen: 5.00 ng
 RT: 21.21 min Scan# 970
 Delta R.T. -0.00 min
 Lab File: BM000827.D
 Acq: 03 Apr 2015 03:32

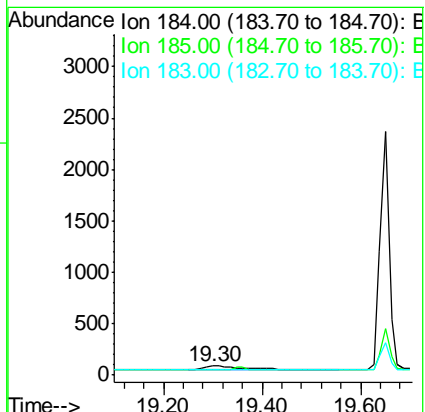
Instrument :
 BNA_M
 ClientSampled :

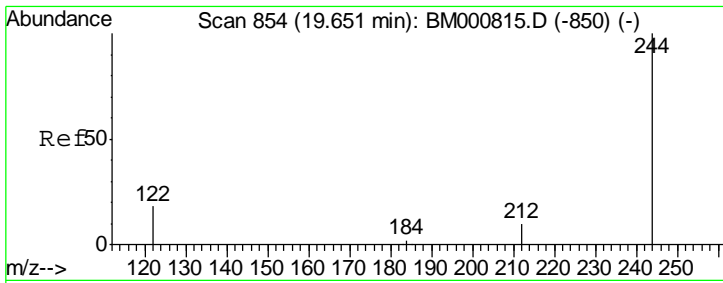
Tgt Ion	Resp	Lower	Upper
240	115344		
120	11.8	11.3	16.9
236	24.8	21.1	31.7



#31
 Benzidine
 Concen: 0.09 ng
 RT: 19.30 min Scan# 825
 Delta R.T. 0.00 min
 Lab File: BM000827.D
 Acq: 03 Apr 2015 03:32

Tgt Ion	Resp	Lower	Upper
184	285		
185	64.4	39.1	58.7#
183	62.1	36.1	54.1#

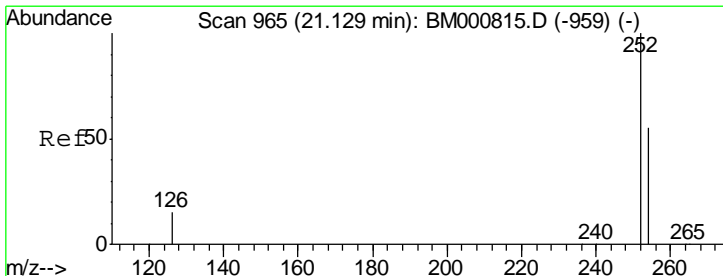
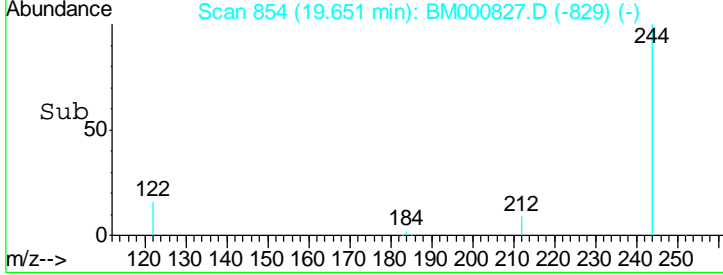
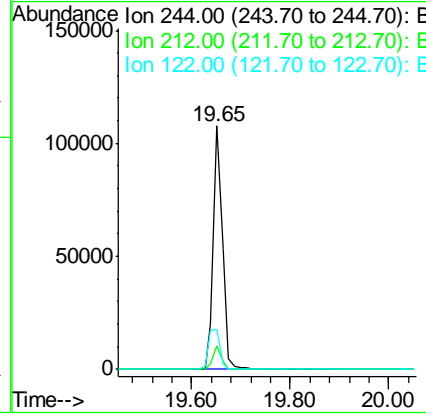
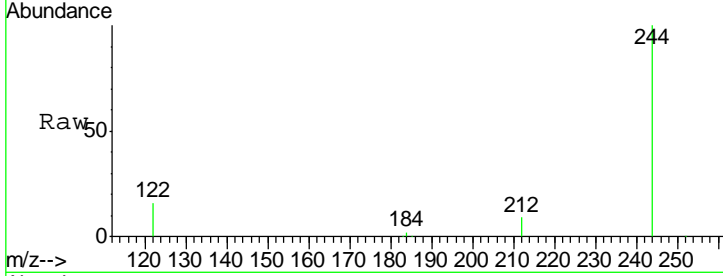




#32
 Terphenyl-d14
 Concen: 9.99 ng
 RT: 19.65 min Scan# 854
 Delta R.T. -0.00 min
 Lab File: BM000827.D
 Acq: 03 Apr 2015 03:32

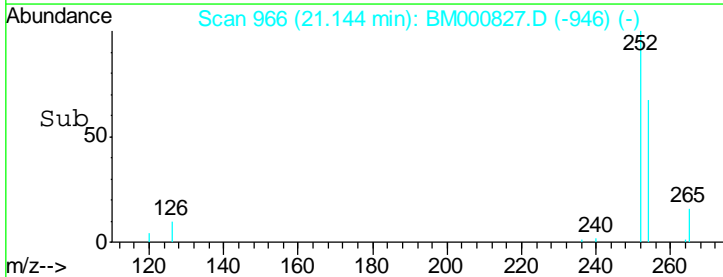
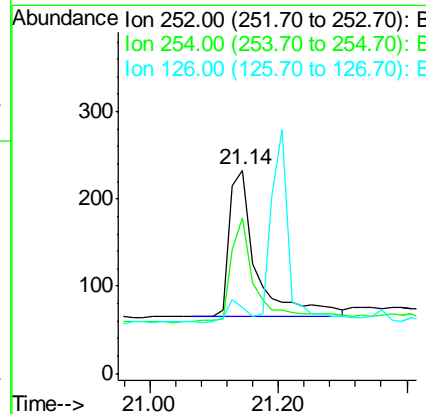
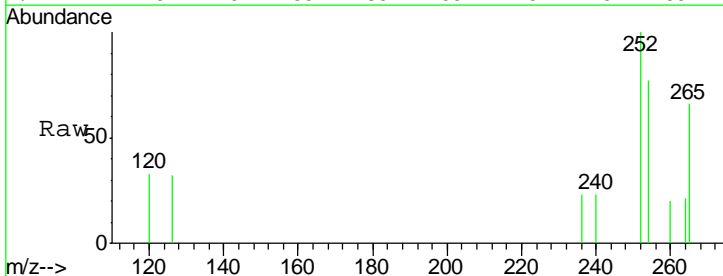
Instrument :
 BNA_M
 ClientSampled :

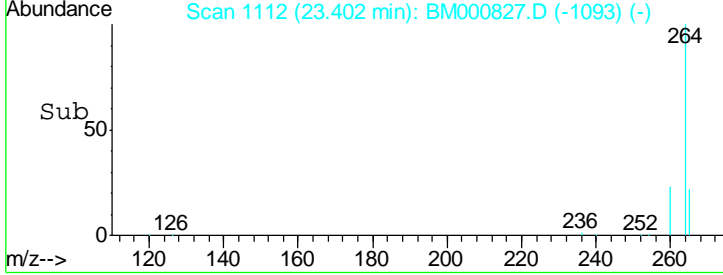
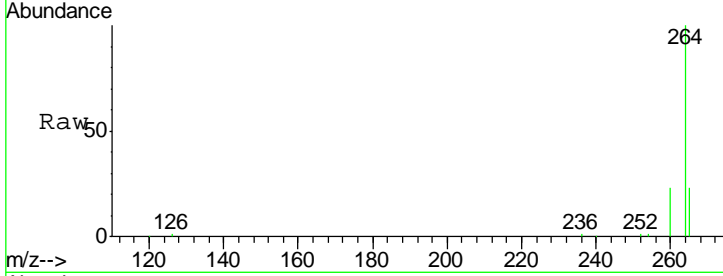
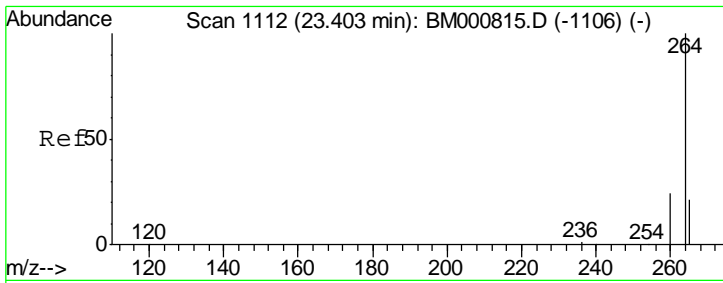
Tgt Ion	Resp	Lower	Upper
244	138667		
212	9.5	8.0	12.0
122	16.5	14.7	22.1



#33
 3,3'-Dichlorobenzidine
 Concen: 0.24 ng
 RT: 21.14 min Scan# 966
 Delta R.T. 0.02 min
 Lab File: BM000827.D
 Acq: 03 Apr 2015 03:32

Tgt Ion	Resp	Lower	Upper
252	494		
254	76.8	44.5	66.7#
126	32.2	13.6	20.4#





#34
 Perylene-d12
 Concen: 5.00 ng
 RT: 23.40 min Scan# 1112
 Delta R.T. -0.00 min
 Lab File: BM000827.D
 Acq: 03 Apr 2015 03:32

Instrument :
 BNA_M
 ClientSampled :

Tot Ion: 264 Resp: 106061

Ion	Ratio	Lower	Upper
264	100		
260	22.9	19.1	28.7
265	22.9	17.5	26.3

