

Data Path : Z:\HPCHEM1\BNA_M\DATA\BM040616\
 Data File : BM004911.D
 Acq On : 06 Apr 2016 19:04
 Operator : UM/SJ
 Sample : H1940-09
 Misc :
 ALS Vial : 13 Sample Multiplier: 1

Instrument :
 BNA_M
 ClientSampleId :
 D9SJ3

Quant Time: Apr 07 04:34:31 2016
 Quant Method : Z:\HPCHEM1\BNA_M\METHODS\SOM02.2-EPA-BM040116.M
 Quant Title : SVOA CALIBRATION
 QLast Update : Thu Apr 07 04:29:45 2016
 Response via : Initial Calibration

Internal Standards	R.T.	QIon	Response	Conc	Units	Dev(Min)
1) 1,4-Dichlorobenzene-d4	7.82	152	53158	20.00	ng/ul	0.00
18) Naphthalene-d8	10.61	136	241218	20.00	ng/ul	0.00
36) Acenaphthene-d10	14.46	164	144743	20.00	ng/ul	0.00
62) Phenanthrene-d10	17.20	188	347821	20.00	ng/ul	0.00
78) Chrysene-d12	21.39	240	423327	20.00	ng/ul	0.00
86) Perylene-d12	23.69	264	353011	20.00	ng/ul	0.00

System Monitoring Compounds

3) 1,4-Dioxane-d8	3.32	96	2931	2.23	ng/uL	0.00
5) Phenol-d5	6.98	99	67274	14.24	ng/ul	0.00
7) Bis-(2-Chloroethyl)ether-d	7.15	67	39078	15.27	ng/ul	0.00
9) 2-Chlorophenol-d4	7.35	132	54044	15.07	ng/ul	0.00
13) 4-Methylphenol-d8	8.52	113	55359	13.95	ng/ul	0.00
19) Nitrobenzene-d5	8.97	128	25292	14.78	ng/ul	0.00
22) 2-Nitrophenol-d4	9.70	143	28516	14.98	ng/ul	0.00
26) 2,4-Dichlorophenol-d3	10.23	165	54989	15.50	ng/ul	0.00
29) 4-Chloroaniline-d4	10.75	131	52492	12.40	ng/ul	0.00
44) Dimethylphthalate-d6	13.86	166	182011	15.94	ng/ul	0.00
47) Acenaphthylene-d8	14.15	160	224622	16.44	ng/ul	0.00
52) 4-Nitrophenol-d4	14.65	143	26445	11.71	ng/ul	0.00
58) Fluorene-d10	15.45	176	169196	17.14	ng/ul	0.00
63) 4,6-Dinitro-2-methylphenol	15.57	200	23524	11.29	ng/ul	0.00
71) Anthracene-d10	17.30	188	271475	17.44	ng/ul	0.00
79) Pyrene-d10	19.60	212	334824	18.22	ng/ul	0.00
90) Benzo(a)pyrene-d12	23.54	264	276604	17.69	ng/ul	0.00

Target Compounds

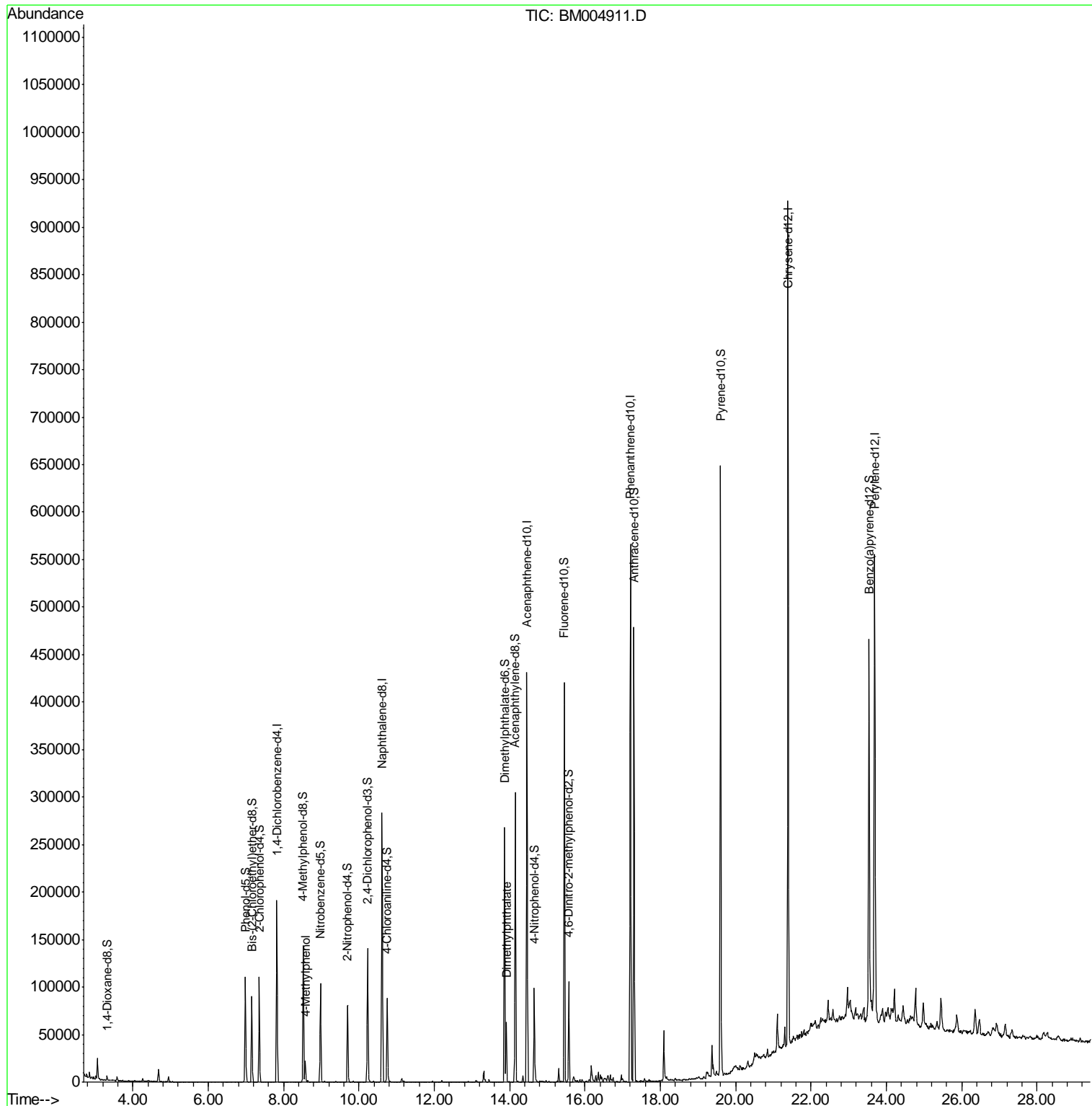
					Qvalue
16) 4-Methylphenol	8.58	108	9410	2.17	ng/ul 92
45) Dimethylphthalate	13.91	163	42255	3.63	ng/ul 100

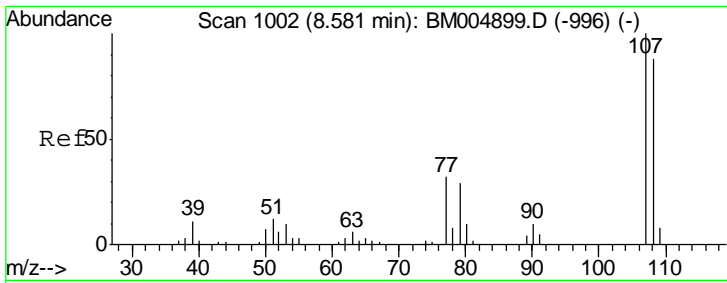
(#) = qualifier out of range (m) = manual integration (+) = signals summed

Data Path : Z:\HPCHEM1\BNA_M\DATA\BM040616\
 Data File : BM004911.D
 Acq On : 06 Apr 2016 19:04
 Operator : UM/SJ
 Sample : H1940-09
 Misc :
 ALS Vial : 13 Sample Multiplier: 1

Instrument :
 BNA_M
 ClientSampleId :
 D9SJ3

Quant Time: Apr 07 04:34:31 2016
 Quant Method : Z:\HPCHEM1\BNA_M\METHODS\SOM02.2-EPA-BM040116.M
 Quant Title : SVOA CALIBRATION
 QLast Update : Thu Apr 07 04:29:45 2016
 Response via : Initial Calibration

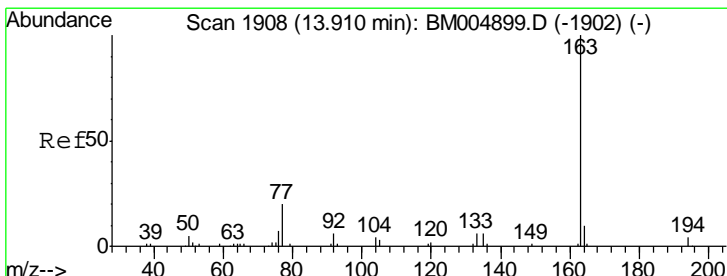
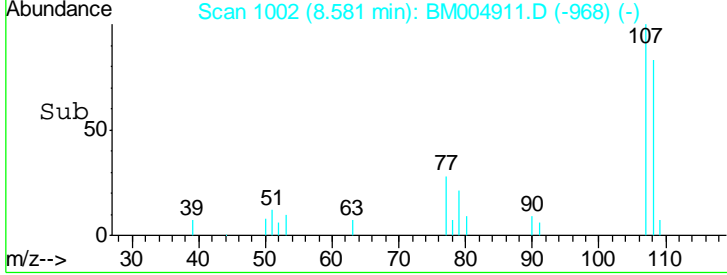
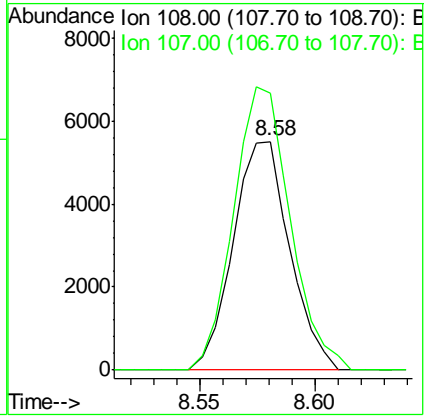
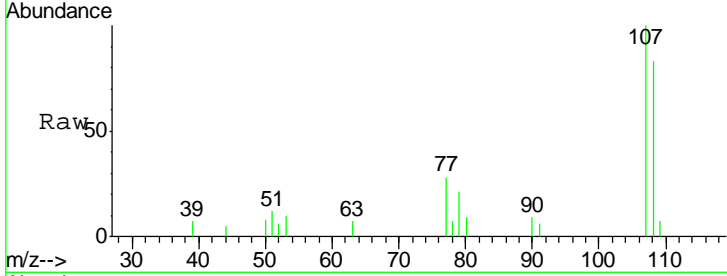




#16
 4-Methylphenol
 Concen: 2.17 ng/ul
 RT: 8.58 min Scan# 1002
 Delta R.T. -0.00 min
 Lab File: BM004911.D
 Acq: 06 Apr 2016 19:04

Instrument :
 BNA_M
 ClientSampled :
 D9SJ3

Tgt Ion:108 Resp: 9410
 Ion Ratio Lower Upper
 108 100
 107 121.1 90.3 135.5



#45
 Dimethylphthalate
 Concen: 3.63 ng/ul
 RT: 13.91 min Scan# 1908
 Delta R.T. -0.00 min
 Lab File: BM004911.D
 Acq: 06 Apr 2016 19:04

Tgt Ion:163 Resp: 42255
 Ion Ratio Lower Upper
 163 100
 194 3.8 3.2 4.8
 164 9.8 7.8 11.8

