

Data Path : Z:\HPCHEM1\BNA M\Data\BM040618\  
 Data File : BM014681.D  
 Acq On : 06 Apr 2018 14:47  
 Operator : SJ/JU  
 Sample : SSTDCCC020  
 Misc :  
 ALS Vial : 2 Sample Multiplier: 1

Instrument :  
 BNA\_M  
 ClientSampleId :

Quant Time: Apr 09 11:41:13 2018  
 Quant Method : Z:\HPCHEM1\BNA M\Methods\SOM-EPA-BM032818MA.M  
 Quant Title : SVOA CALIBRATION  
 QLast Update : Sat Apr 07 00:52:04 2018  
 Response via : Initial Calibration

| Compound                      | R.T.   | QIon | Response | Conc  | Units  | Dev(Min) |
|-------------------------------|--------|------|----------|-------|--------|----------|
| -----                         |        |      |          |       |        |          |
| Internal Standards            |        |      |          |       |        |          |
| 1) 1,4-Dichlorobenzene-d4     | 8.575  | 152  | 449120   | 20.00 | ng/ul  | 0.00     |
| 18) Naphthalene-d8            | 11.422 | 136  | 1896142  | 20.00 | ng/ul  | 0.00     |
| 35) Acenaphthene-d10          | 15.174 | 164  | 983888   | 20.00 | ng/ul  | 0.00     |
| 61) Phenanthrene-d10          | 17.886 | 188  | 1906006  | 20.00 | ng/ul  | 0.00     |
| 77) Chrysene-d12              | 21.968 | 240  | 1707753  | 20.00 | ng/ul  | 0.00     |
| 85) Perylene-d12              | 24.480 | 264  | 1603029  | 20.00 | ng/ul  | 0.00     |
| System Monitoring Compounds   |        |      |          |       |        |          |
| 3) 1,4-Dioxane-d8             | 3.687  | 96   | 79722    | 8.54  | ng/uL  | 0.00     |
| 5) Phenol-d5                  | 7.687  | 99   | 746020   | 20.83 | ng/ul  | 0.00     |
| 7) Bis-(2-Chloroethyl)eth...  | 7.875  | 67   | 477391   | 21.19 | ng/ul  | 0.00     |
| 9) 2-Chlorophenol-d4          | 8.092  | 132  | 611944   | 20.71 | ng/ul  | 0.00     |
| 13) 4-Methylphenol-d8         | 9.269  | 113  | 600395   | 20.52 | ng/ul  | 0.00     |
| 19) Nitrobenzene-d5           | 9.757  | 128  | 280645   | 23.02 | ng/ul  | 0.00     |
| 22) 2-Nitrophenol-d4          | 10.486 | 143  | 258469   | 23.59 | ng/ul  | 0.00     |
| 26) 2,4-Dichlorophenol-d3     | 11.022 | 165  | 574446   | 20.51 | ng/ul  | 0.00     |
| 29) 4-Chloroaniline-d4        | 11.539 | 131  | 761914   | 24.07 | ng/ul  | 0.00     |
| 43) Dimethylphthalate-d6      | 14.563 | 166  | 1536705  | 19.77 | ng/ul  | 0.00     |
| 46) Acenaphthylene-d8         | 14.874 | 160  | 2023242  | 20.49 | ng/ul  | 0.00     |
| 51) 4-Nitrophenol-d4          | 15.316 | 143  | 255650   | 20.26 | ng/ul  | 0.00     |
| 57) Fluorene-d10              | 16.151 | 176  | 1332925  | 19.94 | ng/ul  | 0.00     |
| 62) 4,6-Dinitro-2-methylph... | 16.245 | 200  | 165381   | 20.33 | ng/ul  | 0.00     |
| 70) Anthracene-d10            | 17.980 | 188  | 1863398  | 20.75 | ng/ul  | 0.00     |
| 78) Pyrene-d10                | 20.215 | 212  | 1815467  | 20.95 | ng/ul  | 0.00     |
| 89) Benzo(a)pyrene-d12        | 24.321 | 264  | 1621127  | 20.60 | ng/ul  | 0.00     |
| Target Compounds              |        |      |          |       |        |          |
|                               |        |      |          |       |        | Ovalue   |
| 2) 1,4-Dioxane                | 3.728  | 88   | 83107    | 8.27  | ng/uL  | 96       |
| 4) Benzaldehyde               | 7.687  | 77   | 467633   | 22.84 | ng/ul  | 97       |
| 6) Phenol                     | 7.716  | 94   | 736679   | 21.06 | ng/ul  | 94       |
| 8) Bis(2-Chloroethyl)ether    | 7.969  | 93   | 585087   | 21.16 | ng/ul# | 87       |
| 10) 2-Chlorophenol            | 8.122  | 128  | 603561   | 20.68 | ng/ul# | 92       |
| 11) 2-Methylphenol            | 9.004  | 108  | 546261   | 20.51 | ng/ul  | 99       |
| 12) 2,2'-oxybis(1-Chloropr... | 9.098  | 45   | 1074796  | 20.97 | ng/ul# | 82       |
| 14) Acetophenone              | 9.410  | 105  | 906446   | 20.94 | ng/ul# | 90       |
| 15) N-Nitroso-di-n-propyla... | 9.387  | 70   | 458676   | 19.81 | ng/ul# | 75       |
| 16) 4-Methylphenol            | 9.334  | 108  | 587815   | 20.53 | ng/ul  | 98       |
| 17) Hexachloroethane          | 9.687  | 117  | 238879   | 20.20 | ng/ul  | 99       |
| 20) Nitrobenzene              | 9.798  | 77   | 682701   | 21.95 | ng/ul  | 94       |
| 21) Isophorone                | 10.322 | 82   | 1178039  | 19.40 | ng/ul  | 98       |
| 23) 2-Nitrophenol             | 10.516 | 139  | 297808   | 23.33 | ng/ul  | 90       |
| 24) 2,4-Dimethylphenol        | 10.557 | 107  | 663560   | 20.57 | ng/ul  | 98       |
| 25) Bis(2-Chloroethoxy)met... | 10.798 | 93   | 767926   | 20.55 | ng/ul  | 99       |
| 27) 2,4-Dichlorophenol        | 11.051 | 162  | 541965   | 20.63 | ng/ul  | 99       |
| 28) Naphthalene               | 11.475 | 128  | 1904313  | 20.60 | ng/ul  | 100      |
| 30) 4-Chloroaniline           | 11.569 | 127  | 727405   | 24.04 | ng/ul  | 99       |
| 31) Hexachlorobutadiene       | 11.745 | 225  | 347217   | 19.80 | ng/ul  | 99       |
| 32) Caprolactam               | 12.304 | 113  | 124917   | 15.88 | ng/ul# | 49       |
| 33) 4-Chloro-3-methylphenol   | 12.639 | 107  | 554955   | 19.86 | ng/ul  | 97       |

Data Path : Z:\HPCHEM1\BNA M\Data\BM040618\  
 Data File : BM014681.D  
 Acq On : 06 Apr 2018 14:47  
 Operator : SJ/JU  
 Sample : SSTDCCC020  
 Misc :  
 ALS Vial : 2 Sample Multiplier: 1

Instrument :  
 BNA\_M  
 ClientSampleId :

Quant Time: Apr 09 11:41:13 2018  
 Quant Method : Z:\HPCHEM1\BNA M\Methods\SOM-EPA-BM032818MA.M  
 Quant Title : SVOA CALIBRATION  
 QLast Update : Sat Apr 07 00:52:04 2018  
 Response via : Initial Calibration

| Compound                      | R.T.   | QIon | Response | Conc  | Units  | Dev(Min) |
|-------------------------------|--------|------|----------|-------|--------|----------|
| 34) 2-Methylnaphthalene       | 13.039 | 142  | 1324145  | 20.08 | ng/ul  | 98       |
| 36) 1,2,4,5-Tetrachloroben... | 13.392 | 216  | 651576   | 20.86 | ng/ul  | 98       |
| 37) Hexachlorocyclopentadiene | 13.374 | 237  | 431864   | 20.75 | ng/ul  | 99       |
| 38) 2,4,6-Trichlorophenol     | 13.622 | 196  | 394681   | 21.28 | ng/ul  | 98       |
| 39) 2,4,5-Trichlorophenol     | 13.686 | 196  | 415256   | 21.37 | ng/ul  | 99       |
| 40) 1,1'-Biphenyl             | 14.016 | 154  | 1670182  | 21.20 | ng/ul  | 98       |
| 41) 2-Chloronaphthalene       | 14.069 | 162  | 1289831  | 21.12 | ng/ul  | 96       |
| 42) 2-Nitroaniline            | 14.251 | 65   | 333424   | 23.43 | ng/ul# | 81       |
| 44) Dimethylphthalate         | 14.610 | 163  | 1468515  | 19.61 | ng/ul  | 100      |
| 45) 2,6-Dinitrotoluene        | 14.733 | 165  | 280070   | 23.15 | ng/ul  | 96       |
| 47) Acenaphthylene            | 14.904 | 152  | 1945697  | 20.78 | ng/ul  | 99       |
| 48) 3-Nitroaniline            | 15.057 | 138  | 286398   | 23.44 | ng/ul  | 92       |
| 49) Acenaphthene              | 15.233 | 153  | 1355255  | 20.73 | ng/ul  | 97       |
| 50) 2,4-Dinitrophenol         | 15.257 | 184  | 103920   | 19.85 | ng/ul# | 18       |
| 52) 4-Nitrophenol             | 15.333 | 109  | 192586   | 20.08 | ng/ul# | 85       |
| 53) Dibenzofuran              | 15.563 | 168  | 1840714  | 20.51 | ng/ul  | 96       |
| 54) 2,4-Dinitrotoluene        | 15.504 | 165  | 390271   | 22.35 | ng/ul# | 88       |
| 55) 2,3,4,6-Tetrachlorophenol | 15.774 | 232  | 332478   | 20.11 | ng/ul  | 97       |
| 56) Diethylphthalate          | 15.945 | 149  | 1424105  | 19.00 | ng/ul  | 98       |
| 58) Fluorene                  | 16.204 | 166  | 1459618  | 19.97 | ng/ul  | 99       |
| 59) 4-Chlorophenyl-phenyle... | 16.186 | 204  | 738467   | 19.73 | ng/ul  | 93       |
| 60) 4-Nitroaniline            | 16.204 | 138  | 283485   | 20.54 | ng/ul  | 90       |
| 63) 4,6-Dinitro-2-methylph... | 16.257 | 198  | 178372   | 20.31 | ng/ul  | 99       |
| 64) N-Nitrosodiphenylamine    | 16.392 | 169  | 1216028  | 21.35 | ng/ul  | 100      |
| 65) 4-Bromophenyl-phenylether | 17.068 | 248  | 432274   | 20.23 | ng/ul  | 93       |
| 66) Hexachlorobenzene         | 17.192 | 284  | 491064   | 20.55 | ng/ul  | 91       |
| 67) Atrazine                  | 17.315 | 200  | 385252   | 19.42 | ng/ul  | 97       |
| 68) Pentachlorophenol         | 17.521 | 266  | 242790   | 19.34 | ng/ul  | 99       |
| 69) Phenanthrene              | 17.927 | 178  | 2126802  | 20.83 | ng/ul  | 99       |
| 71) Anthracene                | 18.015 | 178  | 2179017  | 20.96 | ng/ul  | 100      |
| 72) 1,2,3,4-Tetrachloroben... | 13.992 | 216  | 655516   | 22.43 | ng/uL  | 98       |
| 73) Pentachlorobenzene        | 15.480 | 250  | 614233   | 21.82 | ng/uL  | 99       |
| 74) Carbazole                 | 18.268 | 167  | 1819593  | 21.14 | ng/ul  | 99       |
| 75) Di-n-butylphthalate       | 18.798 | 149  | 2058786  | 19.27 | ng/ul  | 100      |
| 76) Fluoranthene              | 19.886 | 202  | 2205201  | 20.88 | ng/ul  | 98       |
| 79) Pyrene                    | 20.245 | 202  | 2260991  | 21.19 | ng/ul  | 100      |
| 80) Butylbenzylphthalate      | 21.086 | 149  | 766019   | 20.51 | ng/ul  | 98       |
| 81) 3,3'-Dichlorobenzidine    | 21.868 | 252  | 674112   | 21.81 | ng/ul  | 99       |
| 82) Benzo(a)anthracene        | 21.950 | 228  | 2072320  | 20.69 | ng/ul  | 99       |
| 83) Bis(2-ethylhexyl)phtha... | 21.839 | 149  | 1042963  | 18.73 | ng/ul  | 100      |
| 84) Chrysene                  | 22.009 | 228  | 1930911  | 20.65 | ng/ul  | 99       |
| 86) Di-n-octyl phthalate      | 22.803 | 149  | 1637572  | 17.42 | ng/ul# | 88       |
| 87) Benzo(b)fluoranthene      | 23.715 | 252  | 1971776  | 20.50 | ng/ul  | 99       |
| 88) Benzo(k)fluoranthene      | 23.762 | 252  | 1892029  | 20.44 | ng/ul  | 100      |
| 90) Benzo(a)pyrene            | 24.374 | 252  | 1857337  | 20.63 | ng/ul  | 99       |
| 91) Indeno(1,2,3-cd)pyrene    | 27.091 | 276  | 2152183  | 21.32 | ng/ul  | 96       |
| 92) Dibenzo(a,h)anthracene    | 27.109 | 278  | 1806382  | 21.34 | ng/ul  | 99       |
| 93) Benzo(a,h,i)perylene      | 27.897 | 276  | 1763564  | 21.49 | ng/ul  | 98       |

Data Path : Z:\HPCHEM1\BNA M\Data\BM040618\  
 Data File : BM014681.D  
 Acq On : 06 Apr 2018 14:47  
 Operator : SJ/JU  
 Sample : SSTDCCC020  
 Misc :  
 ALS Vial : 2 Sample Multiplier: 1

Instrument :  
 BNA\_M  
 ClientSampleId :

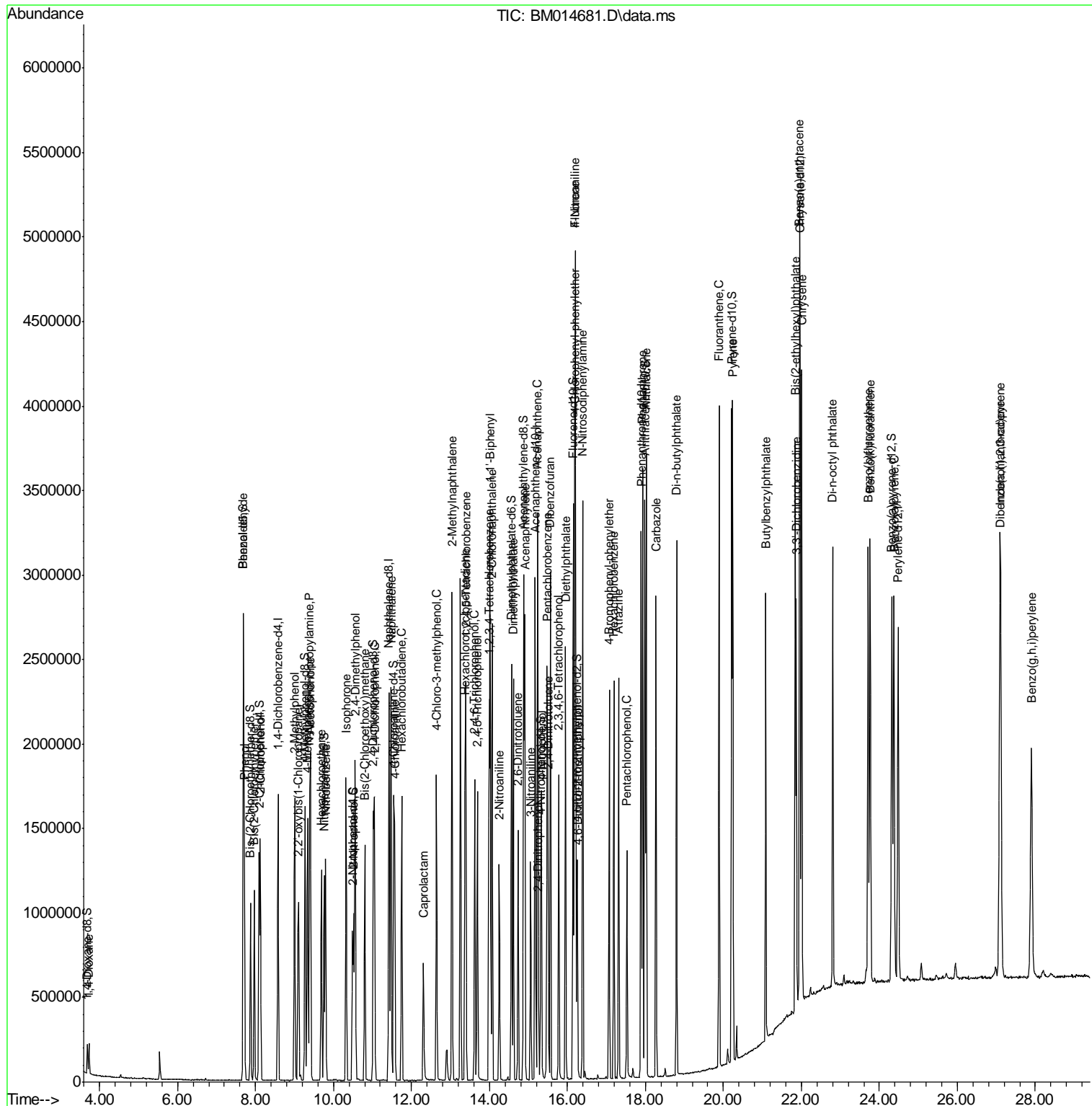
Quant Time: Apr 09 11:41:13 2018  
 Quant Method : Z:\HPCHEM1\BNA M\Methods\SOM-EPA-BM032818MA.M  
 Quant Title : SVOA CALIBRATION  
 QLast Update : Sat Apr 07 00:52:04 2018  
 Response via : Initial Calibration

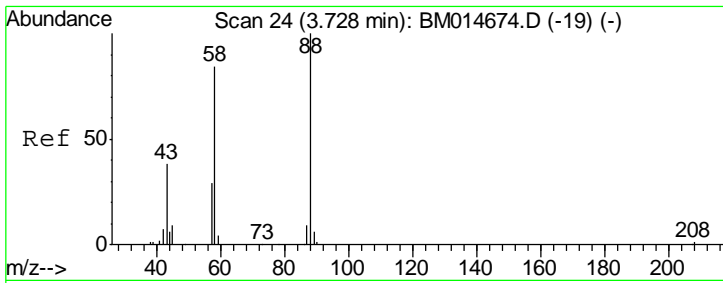
| Compound   | R.T. | QIon | Response | Conc | Units | Dev(Min) |
|--|------|------|----------|------|-------|----------|
| -----  |      |      |          |      |       |          |
| (#) = qualifier out of range (m) = manual integration (+) = signals summed |      |      |          |      |       |          |

Data Path : Z:\HPCHEM1\BNA M\Data\BM040618\  
 Data File : BM014681.D  
 Acq On : 06 Apr 2018 14:47  
 Operator : SJ/JU  
 Sample : SSTDCCC020  
 Misc :  
 ALS Vial : 2 Sample Multiplier: 1

Instrument :  
 BNA\_M  
 Client Sampled :

Quant Time: Apr 09 11:41:13 2018  
 Quant Method : Z:\HPCHEM1\BNA M\Methods\SOM-EPA-BM032818MA.M  
 Quant Title : SVOA CALIBRATION  
 QLast Update : Sat Apr 07 00:52:04 2018  
 Response via : Initial Calibration

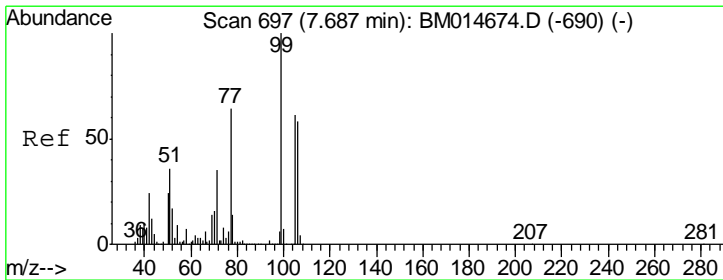
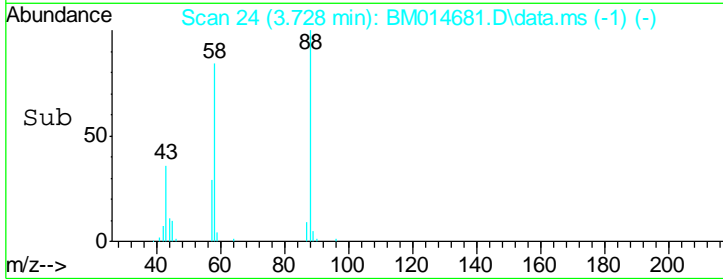
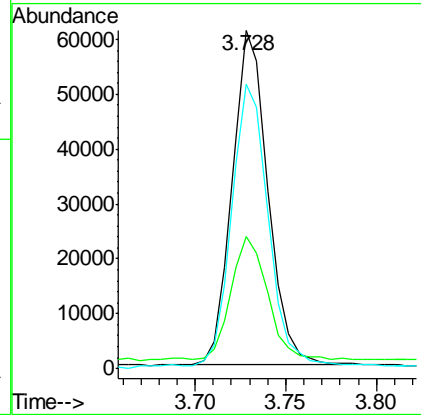
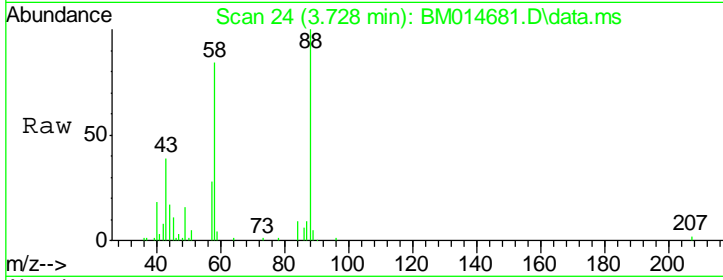




#2  
 1,4-Dioxane  
 Concen: 8.27 ng/uL  
 RT: 3.728 min Scan# 24  
 Delta R.T. -0.000 min  
 Lab File: BM014681.D  
 Acq: 06 Apr 2018 14:47

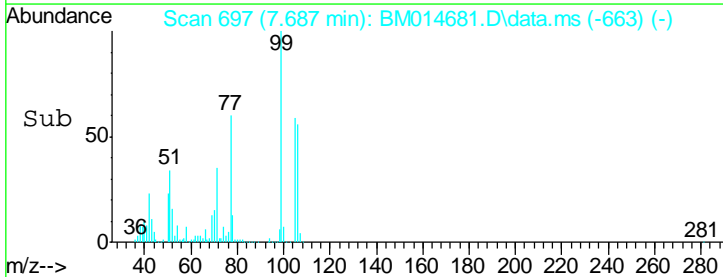
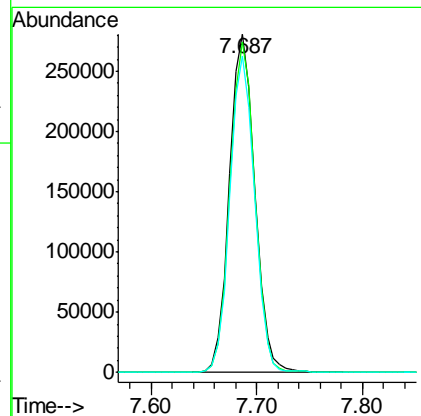
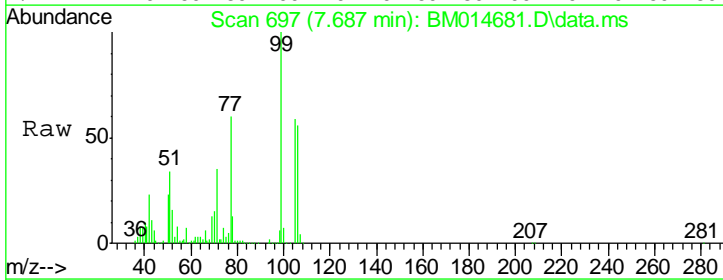
Instrument :  
 BNA\_M  
 ClientSampled :

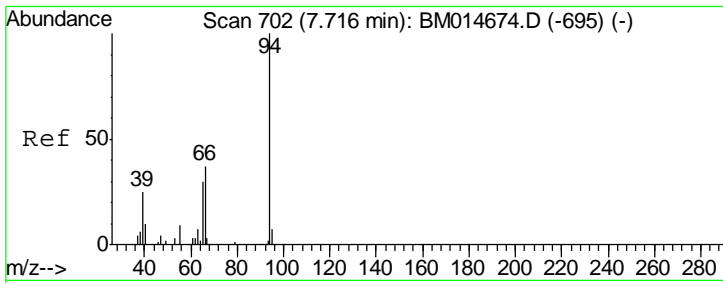
| Tgt Ion | Resp | Lower | Upper |
|---------|------|-------|-------|
| 88      | 100  |       |       |
| 43      | 38.0 | 32.0  | 48.0  |
| 58      | 85.9 | 72.0  | 108.0 |



#4  
 Benzaldehyde  
 Concen: 22.84 ng/ul  
 RT: 7.687 min Scan# 697  
 Delta R.T. -0.000 min  
 Lab File: BM014681.D  
 Acq: 06 Apr 2018 14:47

| Tgt Ion | Resp | Lower | Upper |
|---------|------|-------|-------|
| 77      | 100  |       |       |
| 105     | 97.6 | 80.6  | 120.8 |
| 106     | 93.6 | 77.7  | 116.5 |

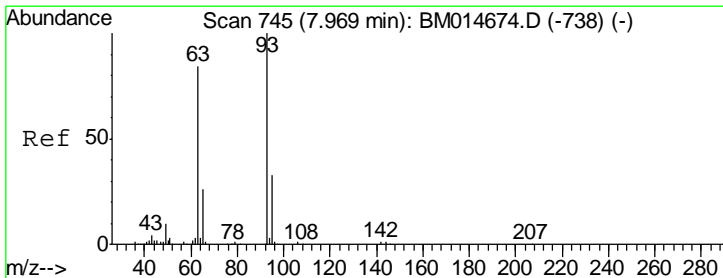
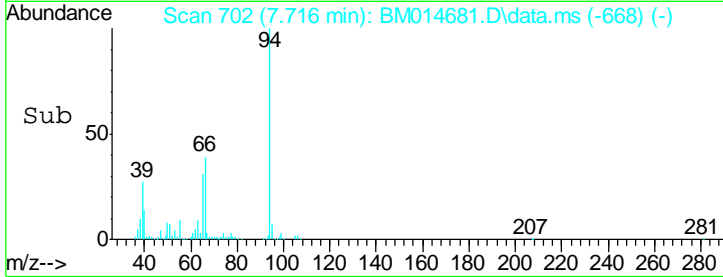
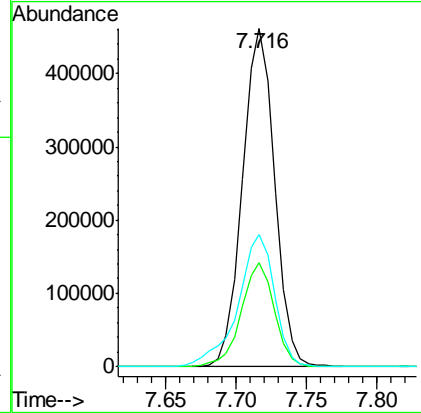
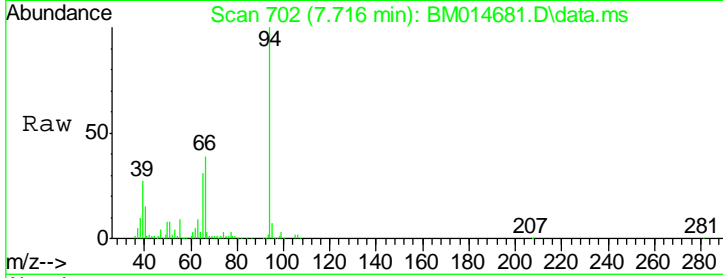




#6  
 Phenol  
 Concen: 21.06 ng/ul  
 RT: 7.716 min Scan# 70  
 Delta R.T. -0.000 min  
 Lab File: BM014681.D  
 Acq: 06 Apr 2018 14:47

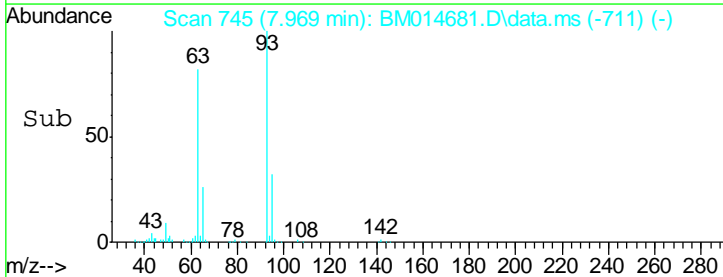
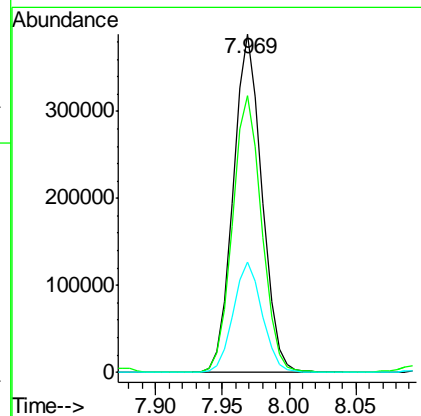
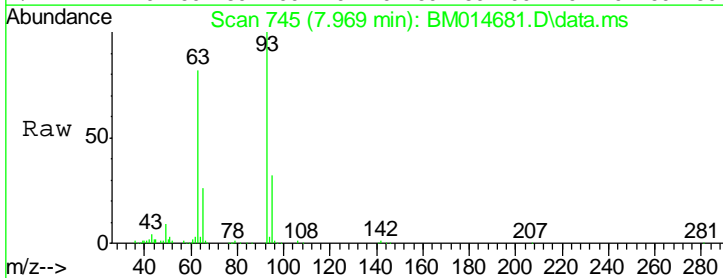
Instrument :  
 BNA\_M  
 ClientSampled :

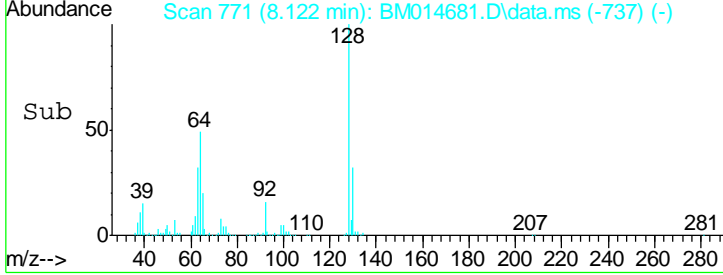
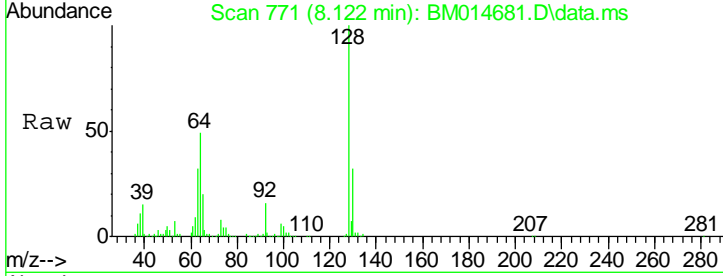
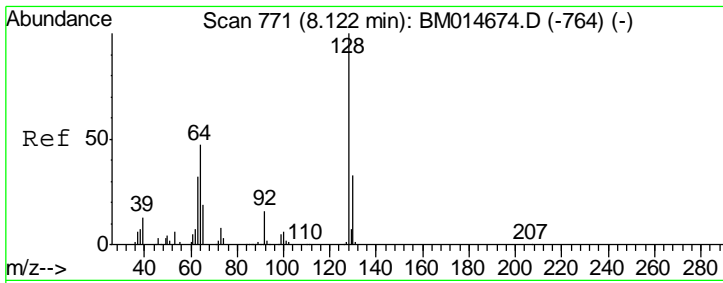
| Tgt Ion | Resp   | Lower | Upper |
|---------|--------|-------|-------|
| 94      | 736679 |       |       |
| 65      | 30.8   | 21.0  | 31.6  |
| 66      | 39.2   | 29.3  | 43.9  |



#8  
 Bis(2-Chloroethyl)ether  
 Concen: 21.16 ng/ul  
 RT: 7.969 min Scan# 745  
 Delta R.T. -0.000 min  
 Lab File: BM014681.D  
 Acq: 06 Apr 2018 14:47

| Tgt Ion | Resp   | Lower | Upper |
|---------|--------|-------|-------|
| 93      | 585087 |       |       |
| 63      | 81.9   | 53.5  | 80.3# |
| 95      | 32.5   | 26.2  | 39.2  |

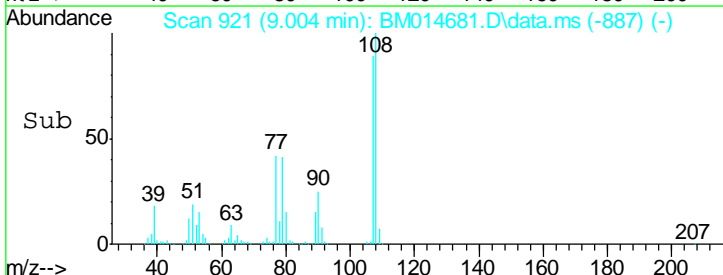
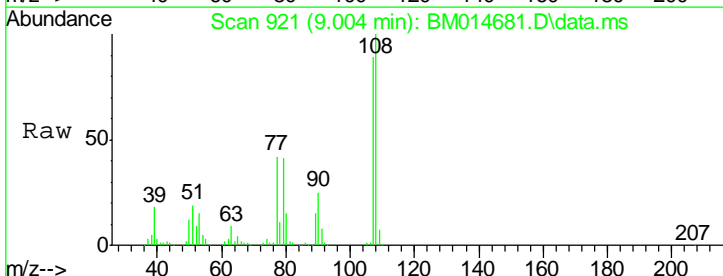
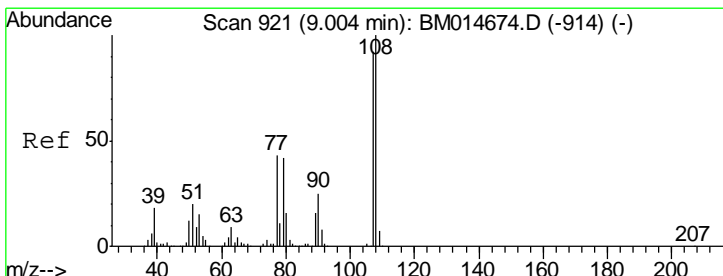
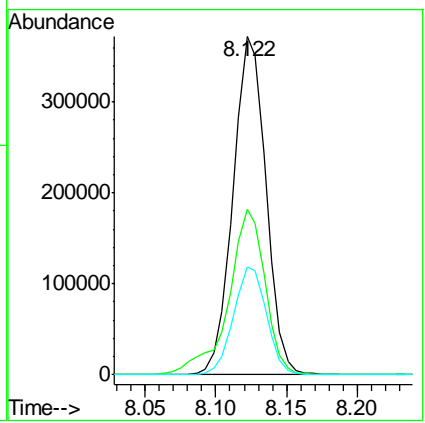




#10  
 2-Chlorophenol  
 Concen: 20.68 ng/ul  
 RT: 8.122 min Scan# 77  
 Delta R.T. -0.000 min  
 Lab File: BM014681.D  
 Acq: 06 Apr 2018 14:47

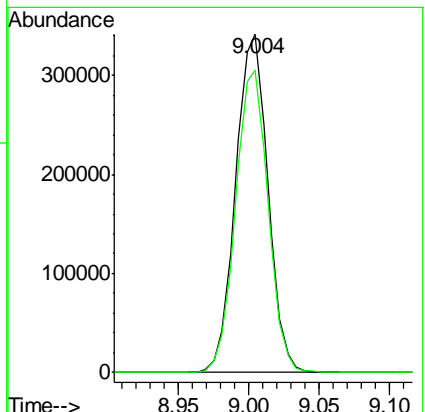
Instrument :  
 BNA\_M  
 ClientSampled :

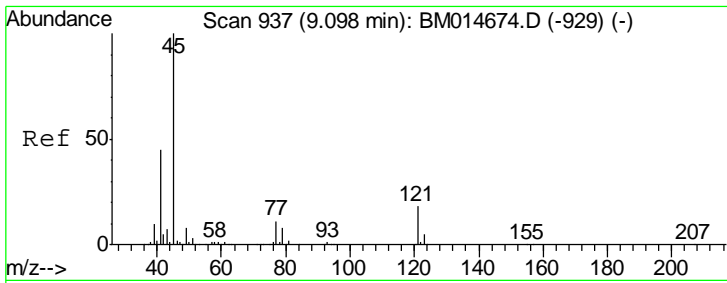
| Tgt Ion | Resp   | Lower | Upper |
|---------|--------|-------|-------|
| 128     | 603561 |       |       |
| 64      | 49.0   | 31.9  | 47.9# |
| 130     | 31.9   | 25.6  | 38.4  |



#11  
 2-Methylphenol  
 Concen: 20.51 ng/ul  
 RT: 9.004 min Scan# 921  
 Delta R.T. -0.000 min  
 Lab File: BM014681.D  
 Acq: 06 Apr 2018 14:47

| Tgt Ion | Resp   | Lower | Upper |
|---------|--------|-------|-------|
| 108     | 546261 |       |       |
| 107     | 89.2   | 72.4  | 108.6 |

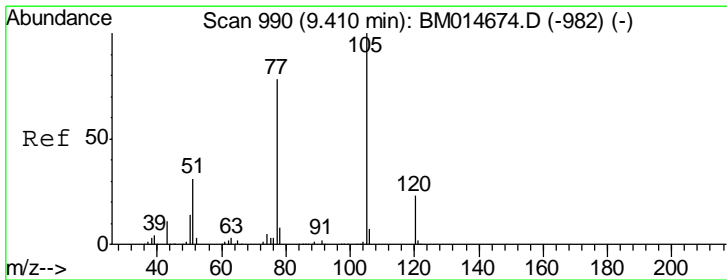
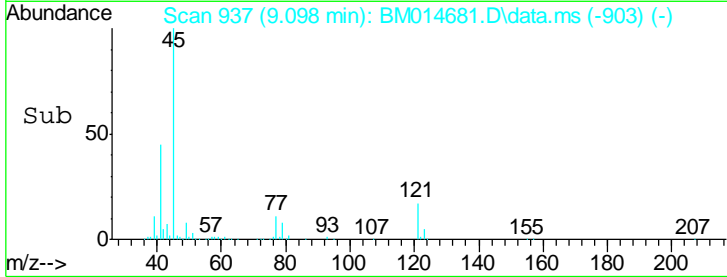
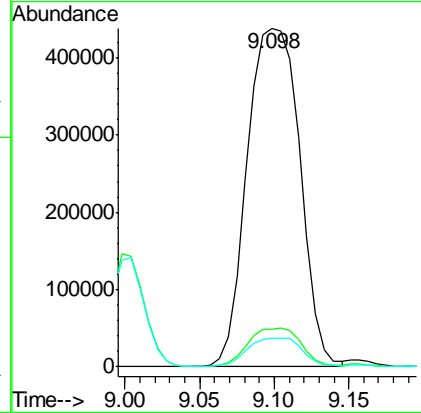
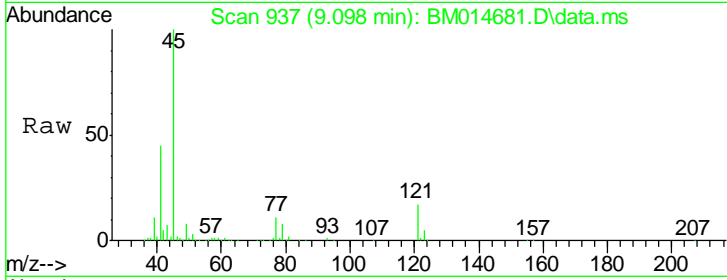




#12  
 2,2'-oxybis(1-Chloropropane)  
 Concen: 20.97 ng/ul  
 RT: 9.098 min Scan# 93  
 Delta R.T. -0.000 min  
 Lab File: BM014681.D  
 Acq: 06 Apr 2018 14:47

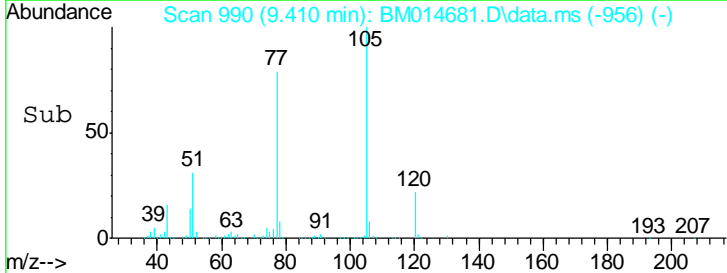
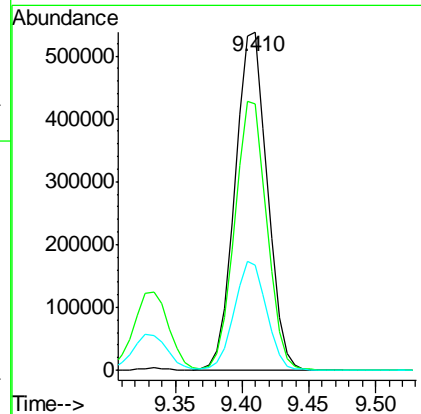
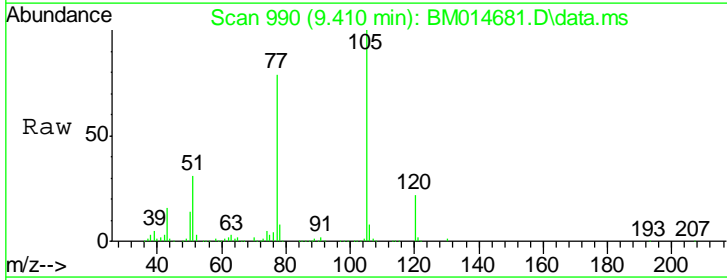
Instrument :  
 BNA\_M  
 ClientSampled :

| Tgt Ion | Ratio | Lower | Upper |
|---------|-------|-------|-------|
| 45      | 100   |       |       |
| 77      | 11.0  | 15.9  | 23.9# |
| 79      | 8.5   | 12.5  | 18.7# |

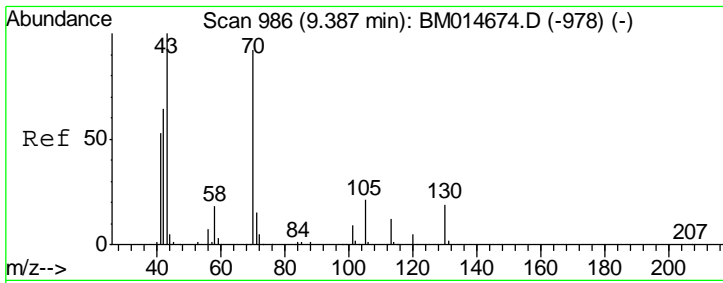


#14  
 Acetophenone  
 Concen: 20.94 ng/ul  
 RT: 9.410 min Scan# 990  
 Delta R.T. -0.000 min  
 Lab File: BM014681.D  
 Acq: 06 Apr 2018 14:47

| Tgt Ion | Ratio | Lower | Upper |
|---------|-------|-------|-------|
| 105     | 100   |       |       |
| 77      | 78.7  | 59.0  | 88.4  |
| 51      | 31.0  | 16.4  | 24.6# |



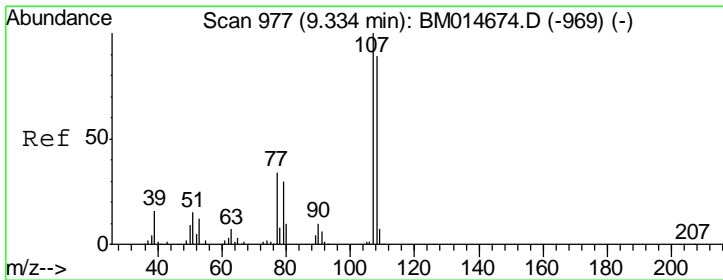
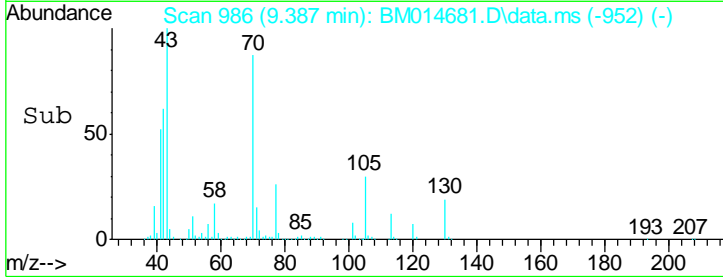
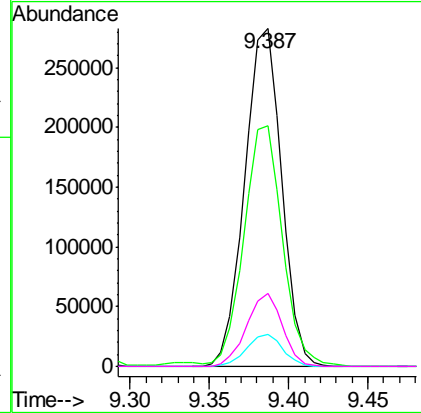
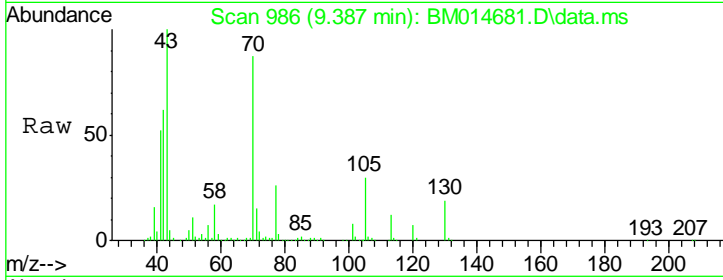




#15  
 N-Nitroso-di-n-propylamine  
 Concen: 19.81 ng/ul  
 RT: 9.387 min Scan# 98  
 Delta R.T. -0.000 min  
 Lab File: BM014681.D  
 Acq: 06 Apr 2018 14:47

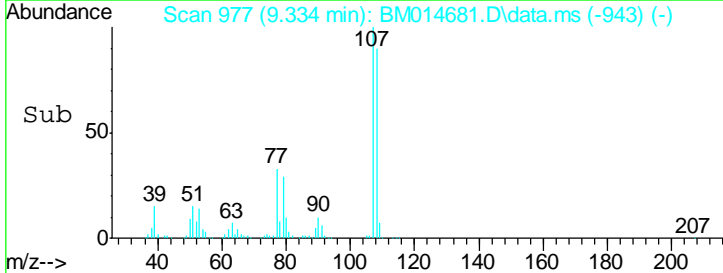
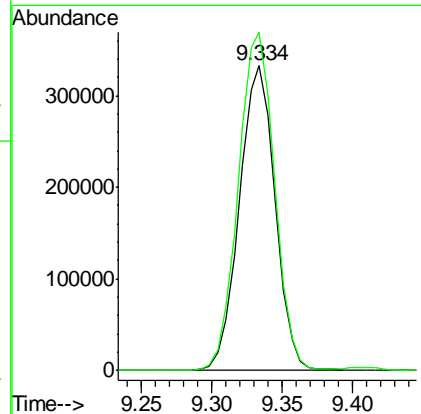
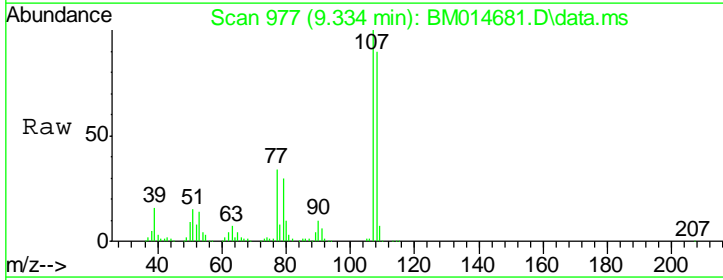
Instrument :  
 BNA\_M  
 ClientSampled :

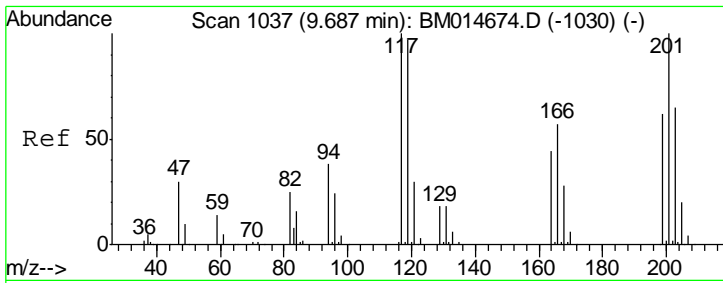
| Tgt Ion | Resp | Lower | Upper |
|---------|------|-------|-------|
| 70      | 100  |       |       |
| 42      | 71.2 | 35.4  | 53.0# |
| 101     | 9.6  | 8.4   | 12.6  |
| 130     | 21.8 | 18.2  | 27.4  |



#16  
 4-Methylphenol  
 Concen: 20.53 ng/ul  
 RT: 9.334 min Scan# 977  
 Delta R.T. -0.000 min  
 Lab File: BM014681.D  
 Acq: 06 Apr 2018 14:47

| Tgt Ion | Resp  | Lower | Upper |
|---------|-------|-------|-------|
| 108     | 100   |       |       |
| 107     | 111.0 | 90.3  | 135.5 |

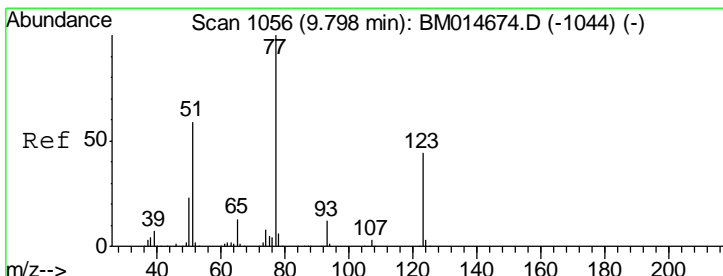
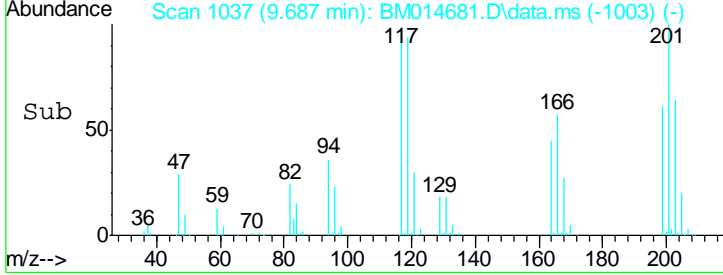
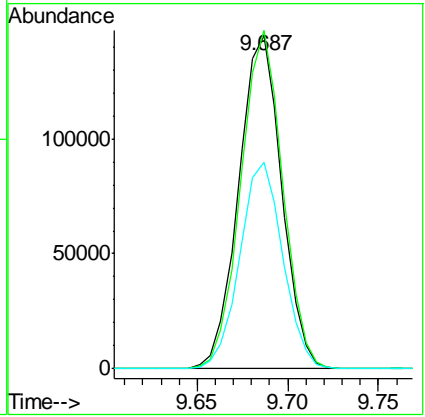
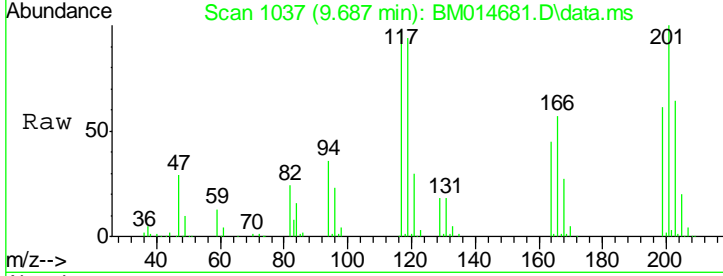




#17  
 Hexachloroethane  
 Concen: 20.20 ng/ul  
 RT: 9.687 min Scan# 10  
 Delta R.T. -0.000 min  
 Lab File: BM014681.D  
 Acq: 06 Apr 2018 14:47

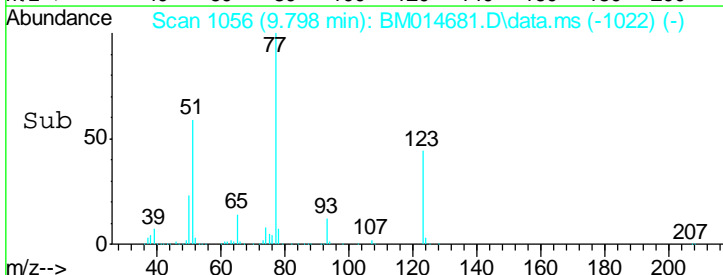
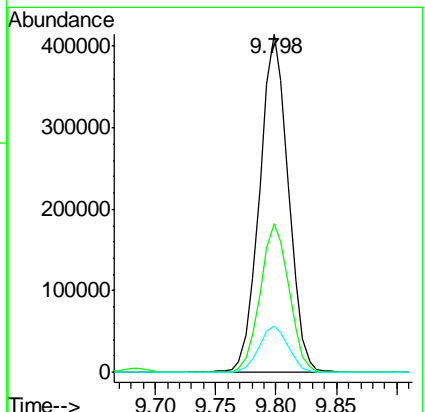
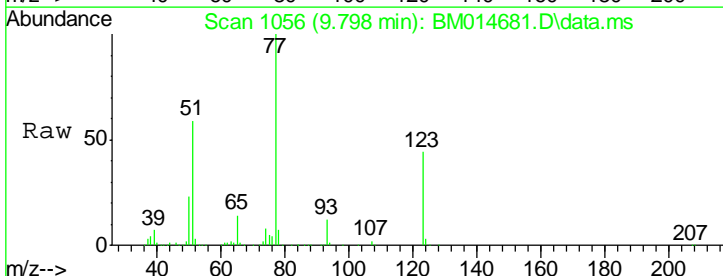
Instrument :  
 BNA\_M  
 ClientSampled :

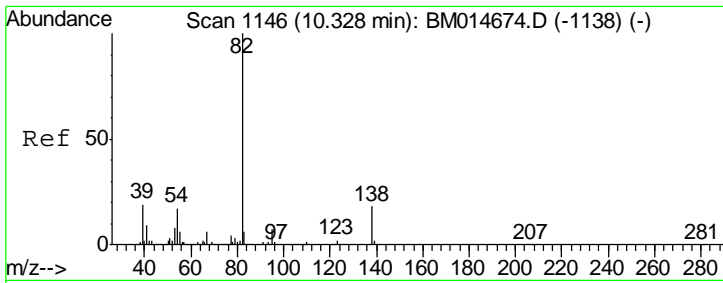
| Tgt Ion | Resp  | Lower | Upper |
|---------|-------|-------|-------|
| 117     | 100   |       |       |
| 201     | 101.5 | 81.5  | 122.3 |
| 199     | 62.0  | 50.6  | 76.0  |



#20  
 Nitrobenzene  
 Concen: 21.95 ng/ul  
 RT: 9.798 min Scan# 1056  
 Delta R.T. -0.000 min  
 Lab File: BM014681.D  
 Acq: 06 Apr 2018 14:47

| Tgt Ion | Resp | Lower | Upper |
|---------|------|-------|-------|
| 77      | 100  |       |       |
| 123     | 43.9 | 39.0  | 58.4  |
| 65      | 13.5 | 10.4  | 15.6  |

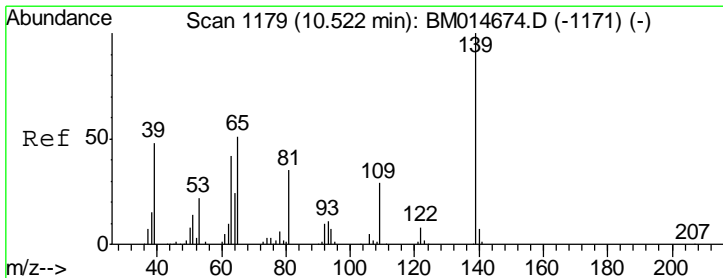
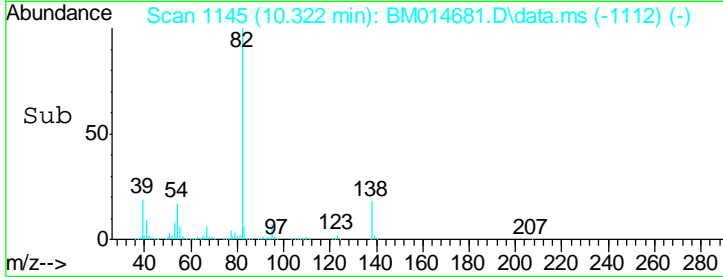
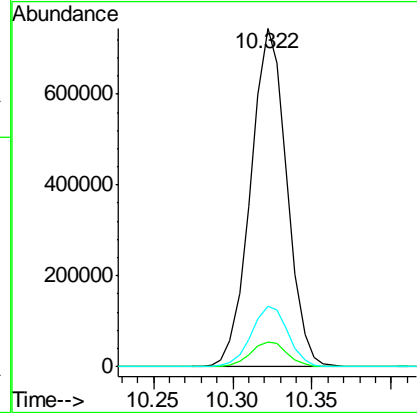
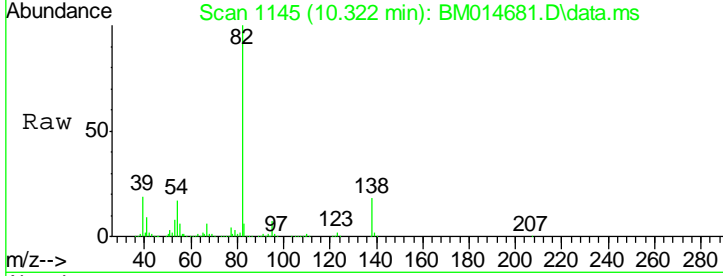




#21  
 Isophorone  
 Concen: 19.40 ng/ul  
 RT: 10.322 min Scan# 11  
 Delta R.T. -0.006 min  
 Lab File: BM014681.D  
 Acq: 06 Apr 2018 14:47

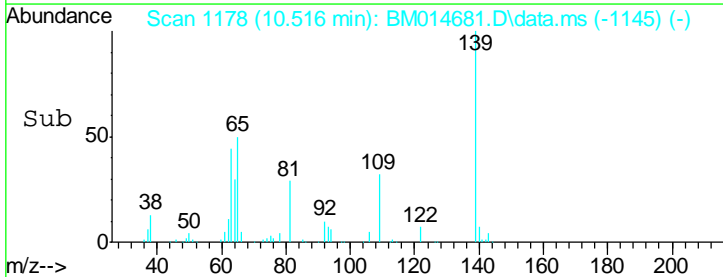
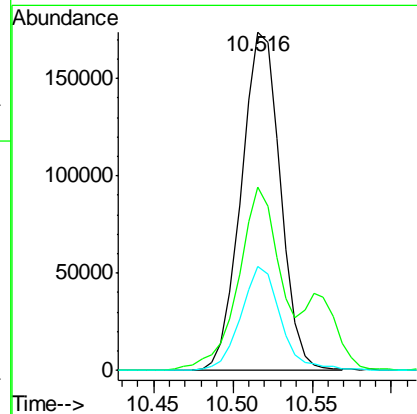
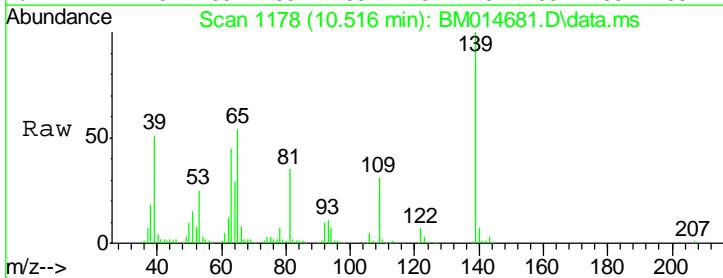
Instrument :  
 BNA\_M  
 ClientSampled :

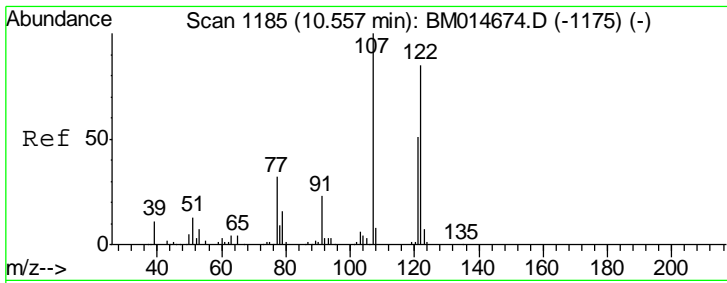
| Tgt Ion | Resp    | Lower | Upper |
|---------|---------|-------|-------|
| 82      | 1178039 |       |       |
| 95      | 7.2     | 6.4   | 9.6   |
| 138     | 18.0    | 14.9  | 22.3  |



#23  
 2-Nitrophenol  
 Concen: 23.33 ng/ul  
 RT: 10.516 min Scan# 1178  
 Delta R.T. -0.006 min  
 Lab File: BM014681.D  
 Acq: 06 Apr 2018 14:47

| Tgt Ion | Resp   | Lower | Upper |
|---------|--------|-------|-------|
| 139     | 297808 |       |       |
| 65      | 54.2   | 36.3  | 54.5  |
| 109     | 30.5   | 26.4  | 39.6  |

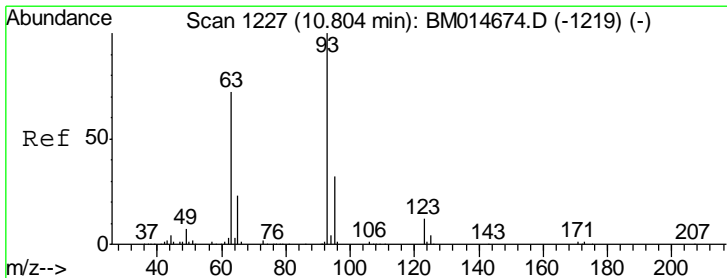
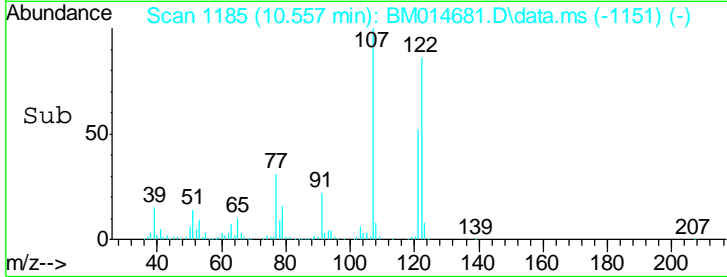
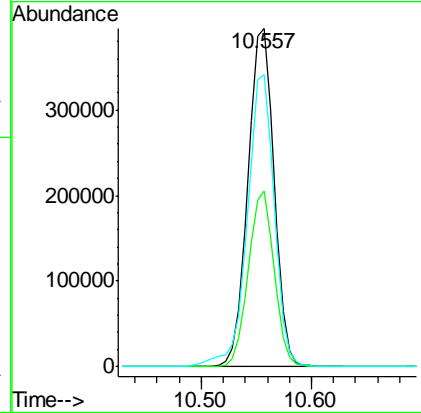
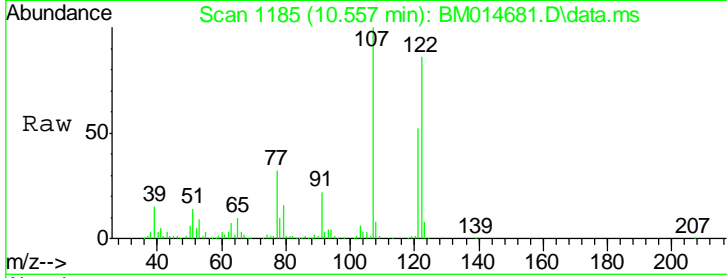




#24  
 2,4-Dimethylphenol  
 Concen: 20.57 ng/ul  
 RT: 10.557 min Scan# 11  
 Delta R.T. -0.000 min  
 Lab File: BM014681.D  
 Acq: 06 Apr 2018 14:47

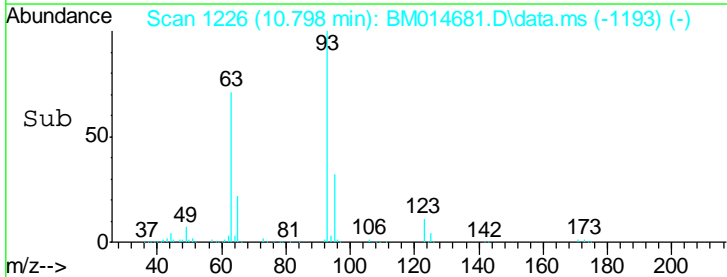
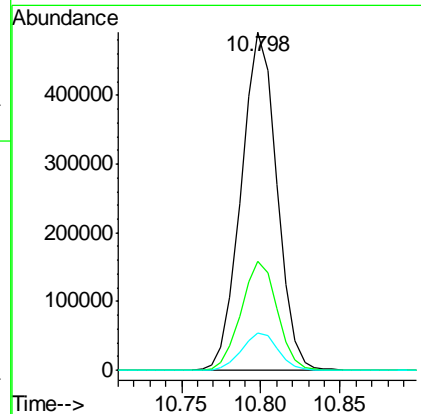
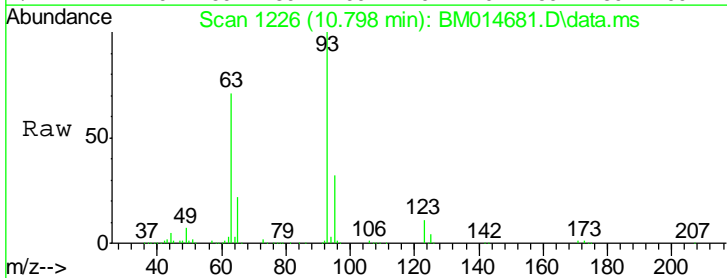
Instrument :  
 BNA\_M  
 ClientSampled :

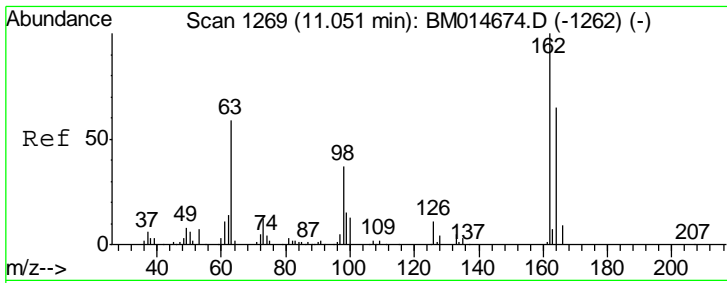
| Tgt Ion | Resp | Lower | Upper |
|---------|------|-------|-------|
| 107     | 100  |       |       |
| 121     | 51.8 | 40.6  | 61.0  |
| 122     | 86.4 | 67.8  | 101.6 |



#25  
 Bis(2-Chloroethoxy)methane  
 Concen: 20.55 ng/ul  
 RT: 10.798 min Scan# 1226  
 Delta R.T. -0.006 min  
 Lab File: BM014681.D  
 Acq: 06 Apr 2018 14:47

| Tgt Ion | Resp | Lower | Upper |
|---------|------|-------|-------|
| 93      | 100  |       |       |
| 95      | 32.1 | 25.8  | 38.8  |
| 123     | 11.1 | 9.8   | 14.8  |

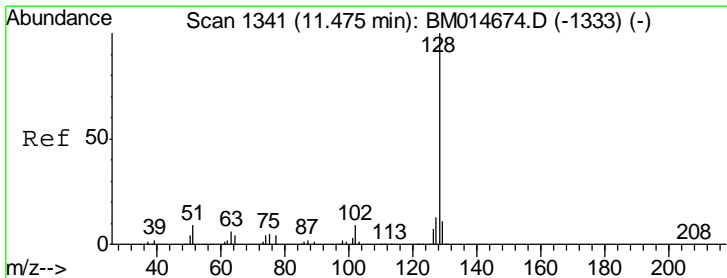
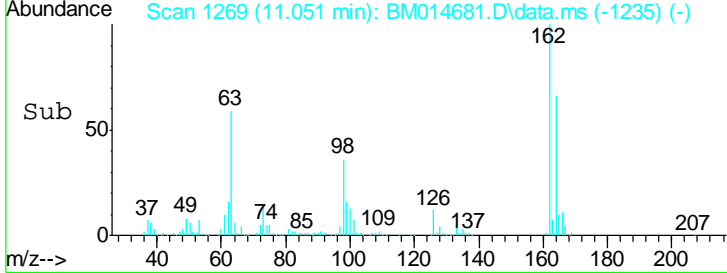
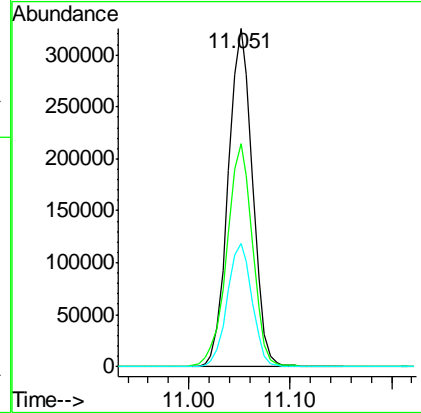
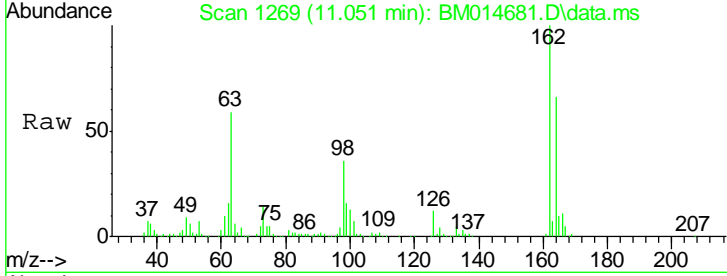




#27  
 2,4-Dichlorophenol  
 Concen: 20.63 ng/ul  
 RT: 11.051 min Scan# 12  
 Delta R.T. -0.000 min  
 Lab File: BM014681.D  
 Acq: 06 Apr 2018 14:47

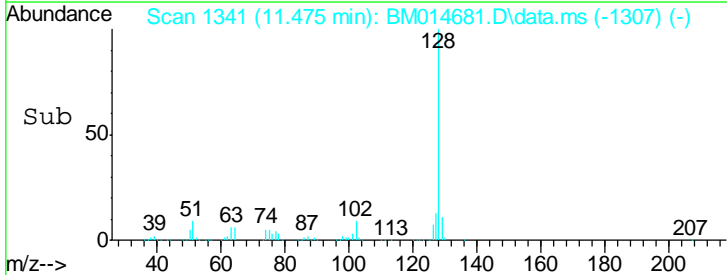
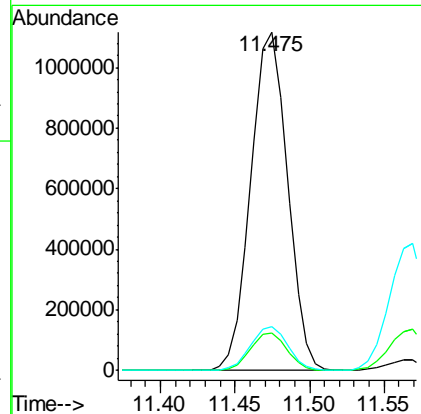
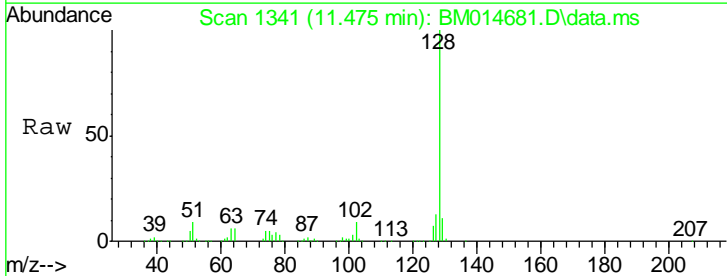
Instrument :  
 BNA\_M  
 ClientSampled :

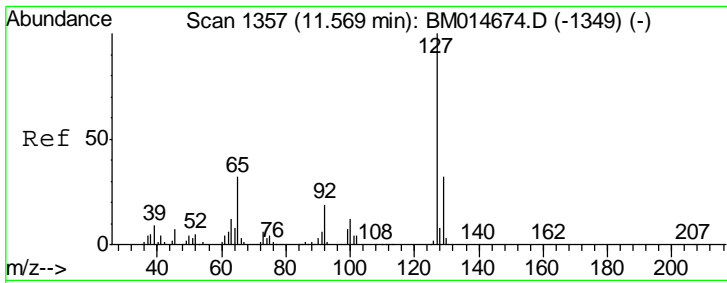
| Tgt Ion | Resp | Lower | Upper |
|---------|------|-------|-------|
| 162     | 100  |       |       |
| 164     | 65.9 | 52.1  | 78.1  |
| 98      | 36.5 | 28.4  | 42.6  |



#28  
 Naphthalene  
 Concen: 20.60 ng/ul  
 RT: 11.475 min Scan# 1341  
 Delta R.T. -0.000 min  
 Lab File: BM014681.D  
 Acq: 06 Apr 2018 14:47

| Tgt Ion | Resp | Lower | Upper |
|---------|------|-------|-------|
| 128     | 100  |       |       |
| 129     | 10.9 | 8.8   | 13.2  |
| 127     | 13.0 | 10.5  | 15.7  |

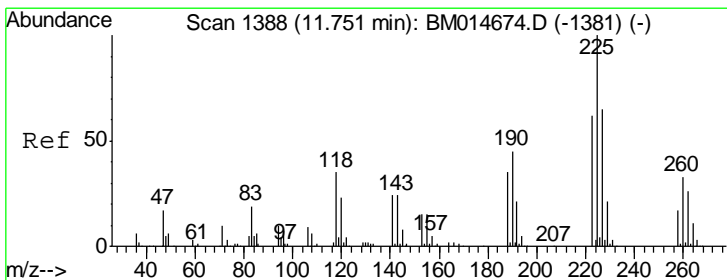
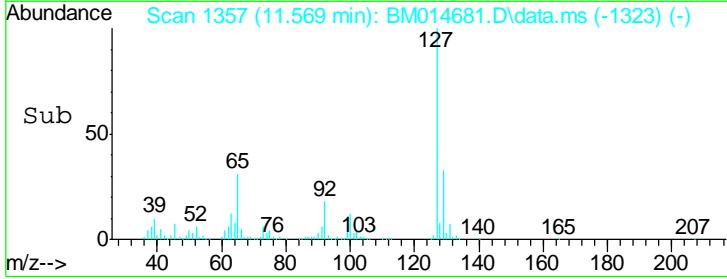
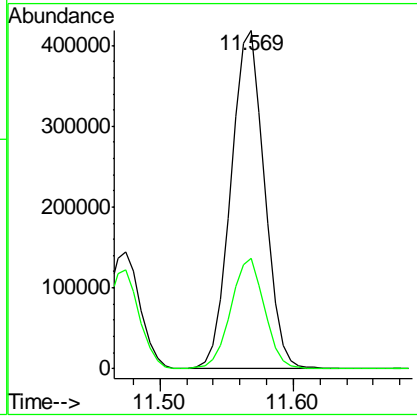
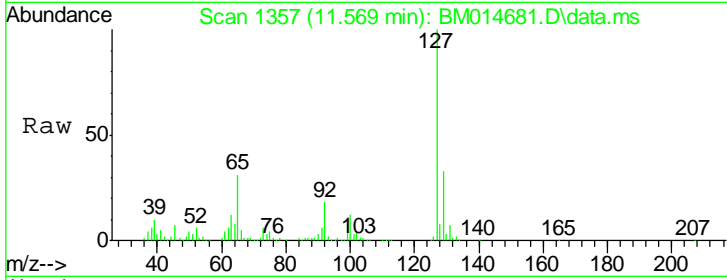




#30  
 4-Chloroaniline  
 Concen: 24.04 ng/ul  
 RT: 11.569 min Scan# 13  
 Delta R.T. -0.000 min  
 Lab File: BM014681.D  
 Acq: 06 Apr 2018 14:47

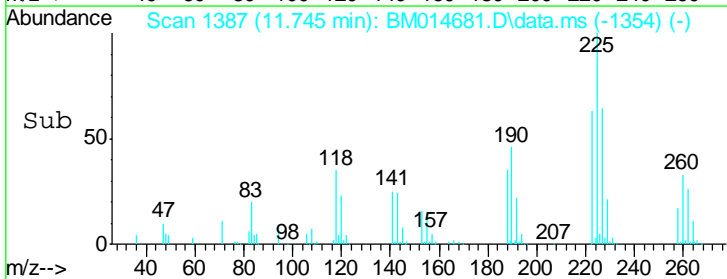
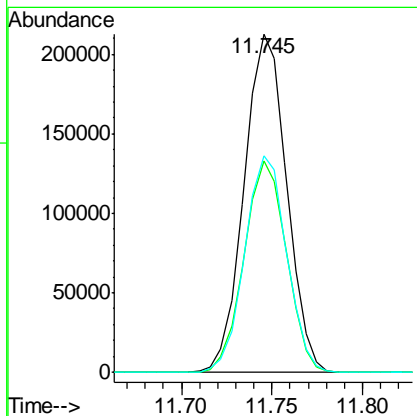
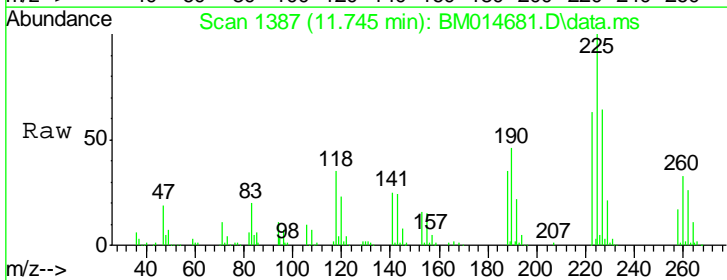
Instrument :  
 BNA\_M  
 ClientSampled :

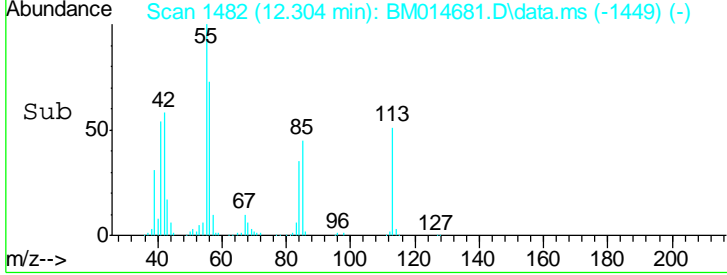
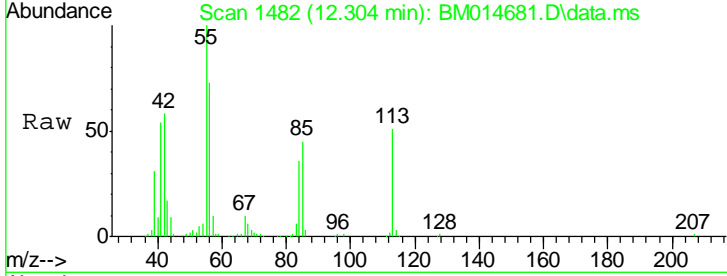
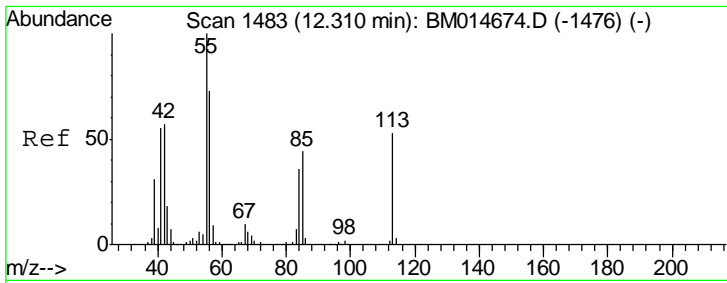
| Tgt Ion | Resp   | Lower | Upper |
|---------|--------|-------|-------|
| 127     | 727405 |       |       |
| 129     | 32.6   | 25.4  | 38.2  |



#31  
 Hexachlorobutadiene  
 Concen: 19.80 ng/ul  
 RT: 11.745 min Scan# 1387  
 Delta R.T. -0.006 min  
 Lab File: BM014681.D  
 Acq: 06 Apr 2018 14:47

| Tgt Ion | Resp   | Lower | Upper |
|---------|--------|-------|-------|
| 225     | 347217 |       |       |
| 223     | 62.6   | 51.4  | 77.2  |
| 227     | 63.9   | 50.7  | 76.1  |

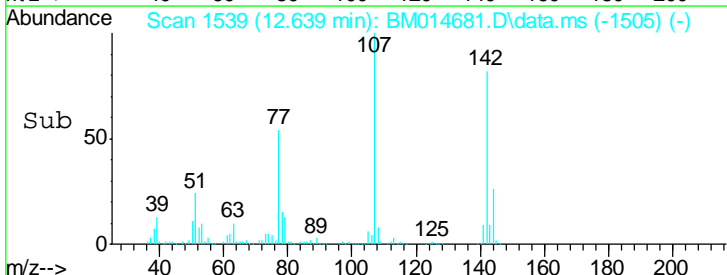
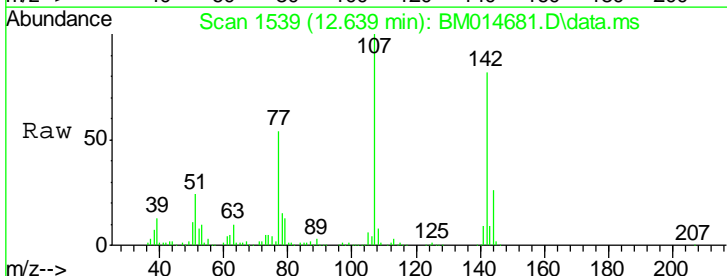
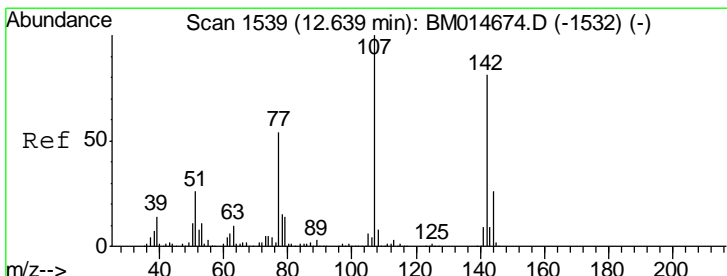
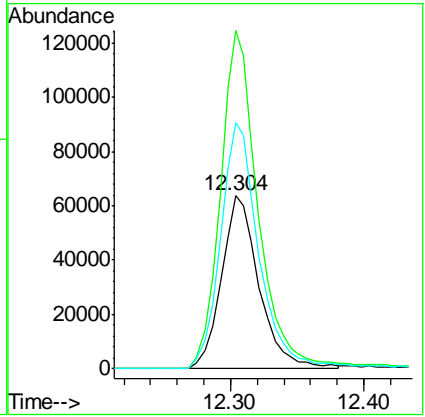




#32  
 Caprolactam  
 Concen: 15.88 ng/ul  
 RT: 12.304 min Scan# 14  
 Delta R.T. -0.006 min  
 Lab File: BM014681.D  
 Acq: 06 Apr 2018 14:47

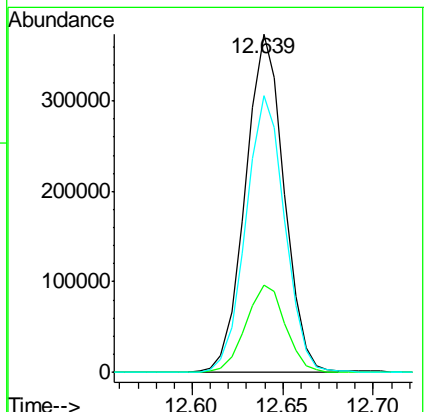
Instrument :  
 BNA\_M  
 ClientSampled :

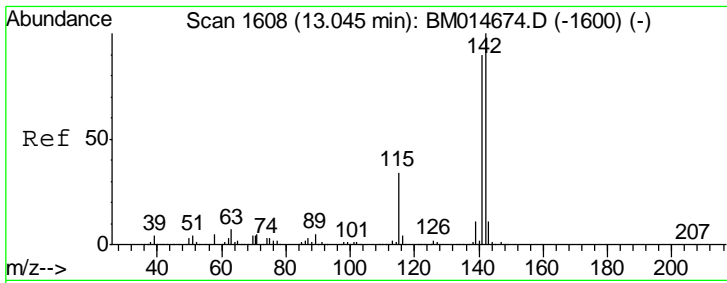
| Tgt Ion | Resp   | Lower | Upper  |
|---------|--------|-------|--------|
| 113     | 124917 |       |        |
| 55      | 196.1  | 101.9 | 152.9# |
| 56      | 143.0  | 81.2  | 121.8# |



#33  
 4-Chloro-3-methylphenol  
 Concen: 19.86 ng/ul  
 RT: 12.639 min Scan# 1539  
 Delta R.T. -0.000 min  
 Lab File: BM014681.D  
 Acq: 06 Apr 2018 14:47

| Tgt Ion | Resp   | Lower | Upper |
|---------|--------|-------|-------|
| 107     | 554955 |       |       |
| 144     | 25.7   | 20.4  | 30.6  |
| 142     | 81.8   | 62.5  | 93.7  |

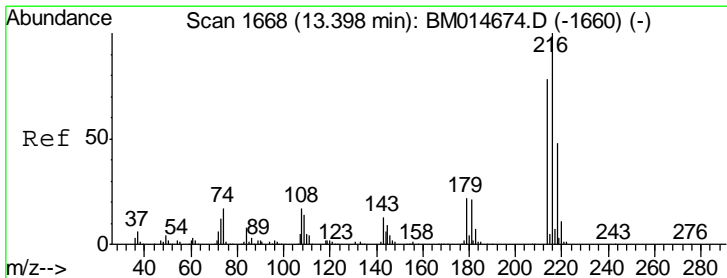
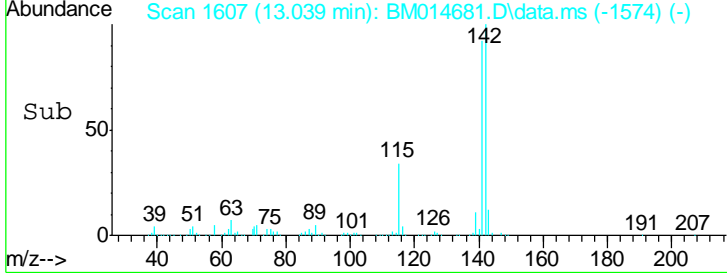
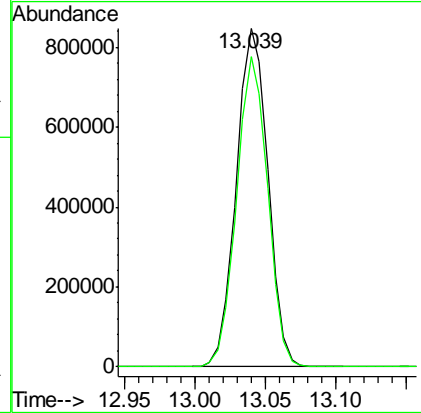
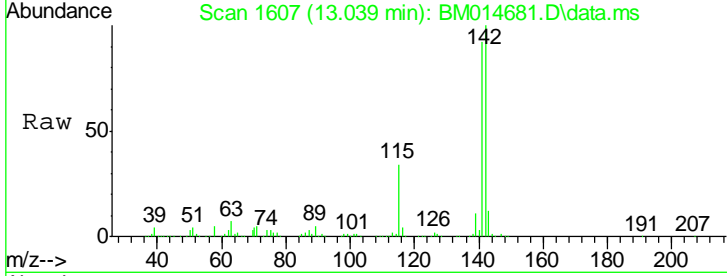




#34  
 2-Methylnaphthalene  
 Concen: 20.08 ng/ul  
 RT: 13.039 min Scan# 16  
 Delta R.T. -0.006 min  
 Lab File: BM014681.D  
 Acq: 06 Apr 2018 14:47

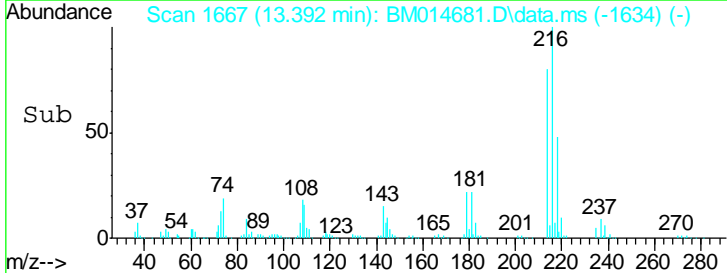
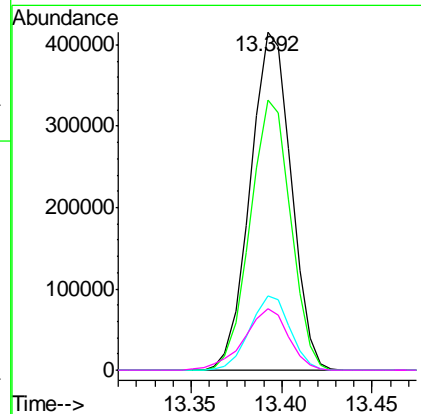
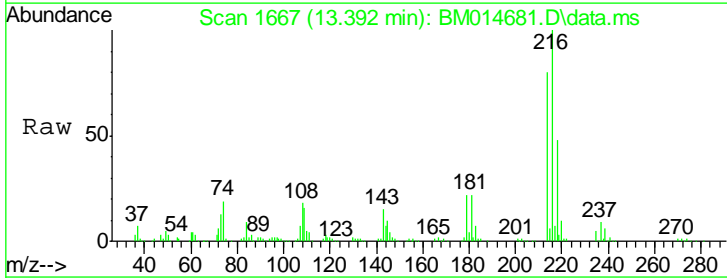
Instrument :  
 BNA\_M  
 ClientSampled :

| Tgt Ion | Resp    | Lower | Upper |
|---------|---------|-------|-------|
| 142     | 1324145 |       |       |
| 141     | 91.6    | 71.6  | 107.4 |

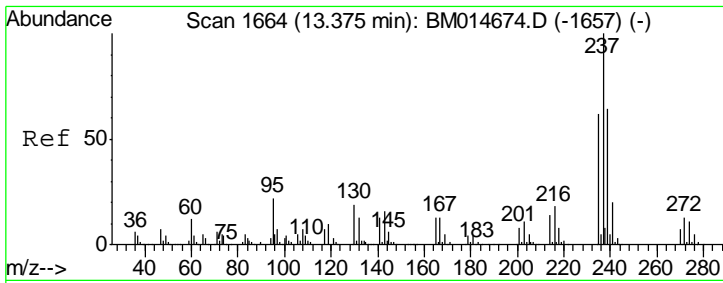


#36  
 1,2,4,5-Tetrachlorobenzene  
 Concen: 20.86 ng/ul  
 RT: 13.392 min Scan# 1667  
 Delta R.T. -0.006 min  
 Lab File: BM014681.D  
 Acq: 06 Apr 2018 14:47

| Tgt Ion | Resp   | Lower | Upper |
|---------|--------|-------|-------|
| 216     | 651576 |       |       |
| 214     | 79.9   | 62.5  | 93.7  |
| 179     | 21.9   | 18.2  | 27.2  |
| 108     | 18.1   | 14.2  | 21.2  |



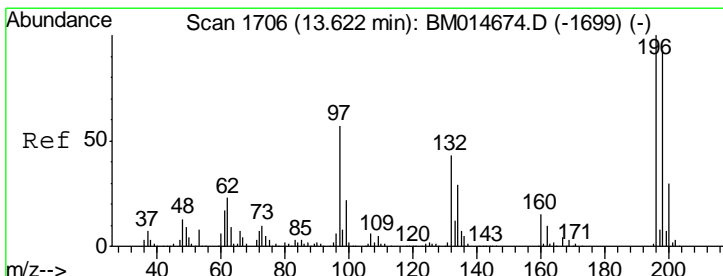
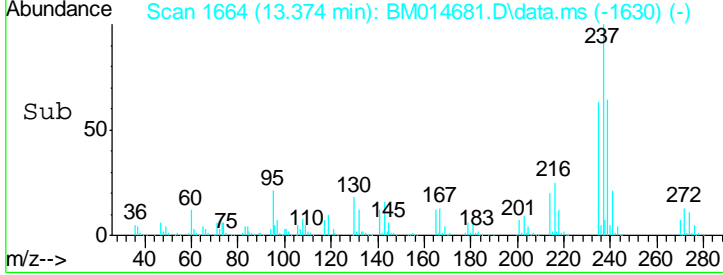
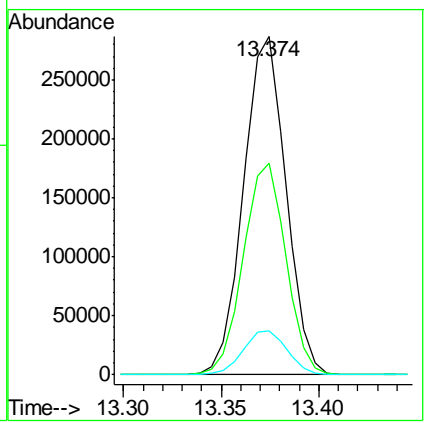
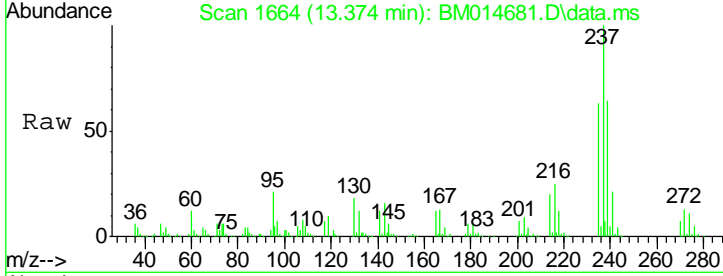




#37  
 Hexachlorocyclopentadiene  
 Concen: 20.75 ng/ul  
 RT: 13.374 min Scan# 1664  
 Delta R.T. -0.000 min  
 Lab File: BM014681.D  
 Acq: 06 Apr 2018 14:47

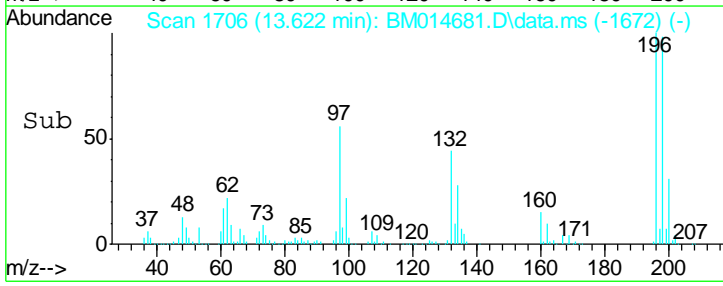
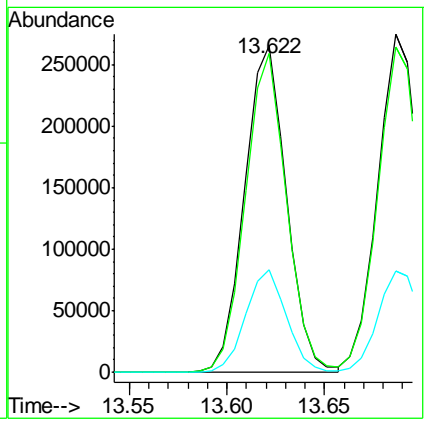
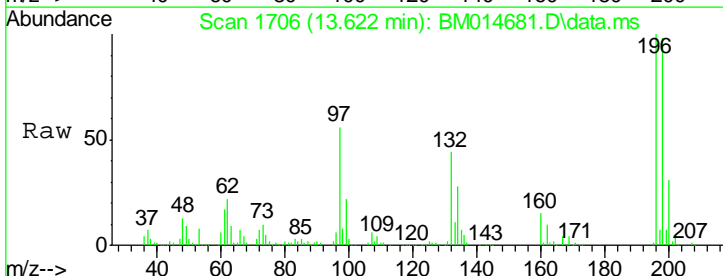
Instrument :  
 BNA\_M  
 ClientSampled :

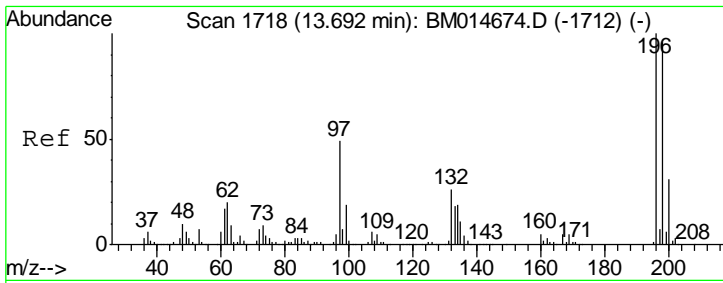
| Tgt Ion | Resp | Lower | Upper |
|---------|------|-------|-------|
| 237     | 100  |       |       |
| 235     | 62.7 | 50.4  | 75.6  |
| 272     | 12.9 | 9.6   | 14.4  |



#38  
 2,4,6-Trichlorophenol  
 Concen: 21.28 ng/ul  
 RT: 13.622 min Scan# 1706  
 Delta R.T. -0.000 min  
 Lab File: BM014681.D  
 Acq: 06 Apr 2018 14:47

| Tgt Ion | Resp | Lower | Upper |
|---------|------|-------|-------|
| 196     | 100  |       |       |
| 198     | 97.7 | 76.6  | 114.8 |
| 200     | 31.5 | 24.7  | 37.1  |

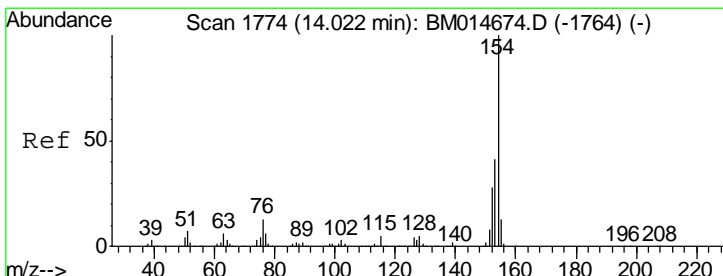
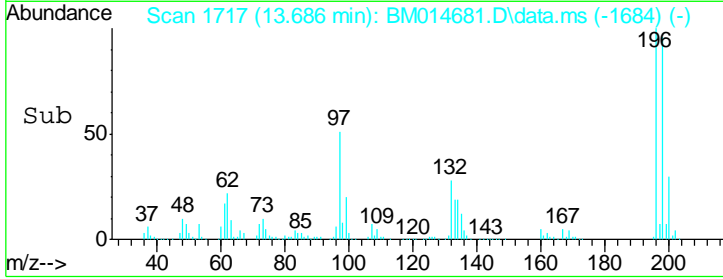
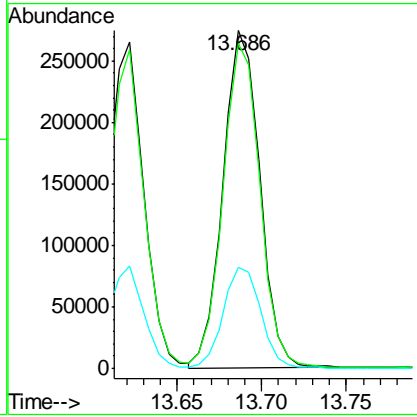
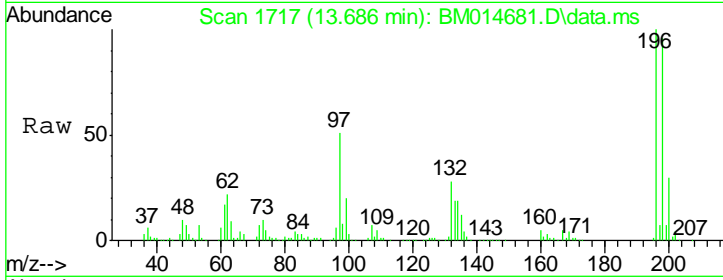




#39  
 2,4,5-Trichlorophenol  
 Concen: 21.37 ng/ul  
 RT: 13.686 min Scan# 17  
 Delta R.T. -0.006 min  
 Lab File: BM014681.D  
 Acq: 06 Apr 2018 14:47

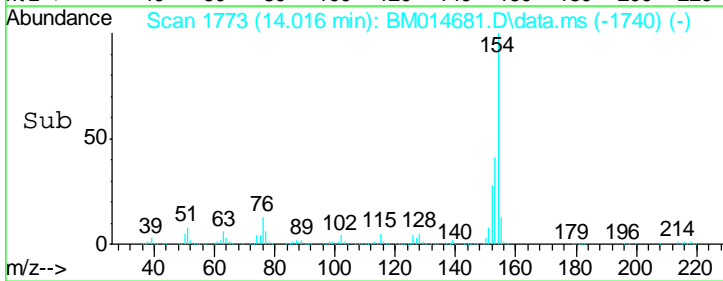
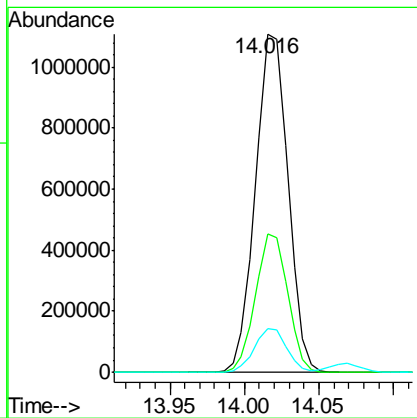
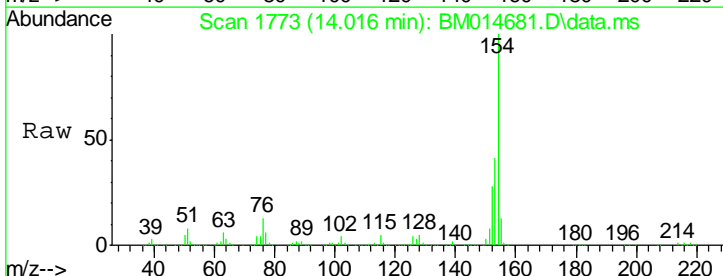
Instrument :  
 BNA\_M  
 ClientSampled :

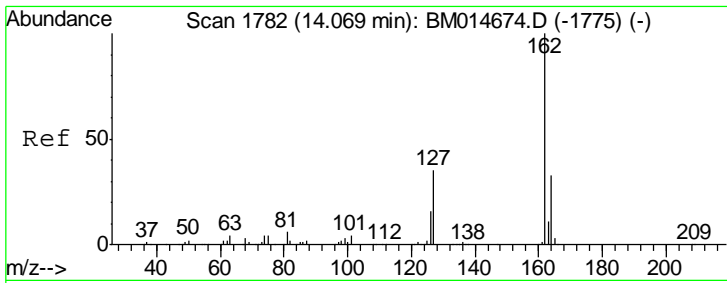
| Tgt Ion | Resp | Lower | Upper |
|---------|------|-------|-------|
| 196     | 100  |       |       |
| 198     | 96.2 | 76.9  | 115.3 |
| 200     | 29.9 | 25.0  | 37.4  |



#40  
 1,1'-Biphenyl  
 Concen: 21.20 ng/ul  
 RT: 14.016 min Scan# 1773  
 Delta R.T. -0.006 min  
 Lab File: BM014681.D  
 Acq: 06 Apr 2018 14:47

| Tgt Ion | Resp | Lower | Upper |
|---------|------|-------|-------|
| 154     | 100  |       |       |
| 153     | 40.8 | 32.1  | 48.1  |
| 76      | 13.1 | 9.5   | 14.3  |



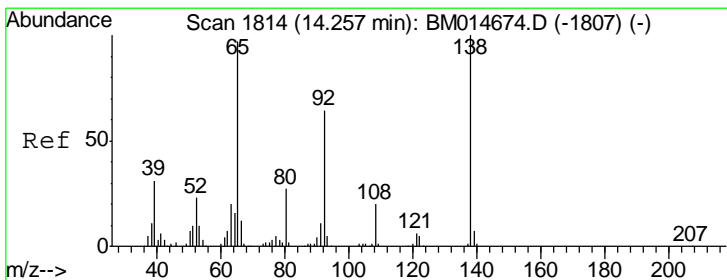
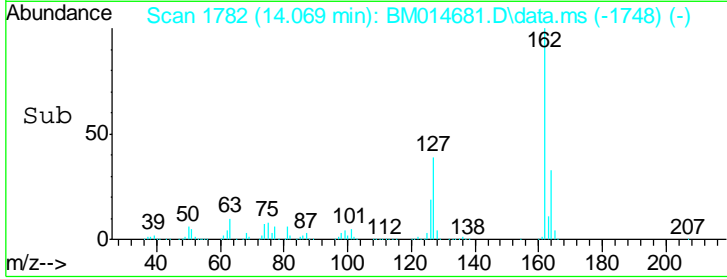
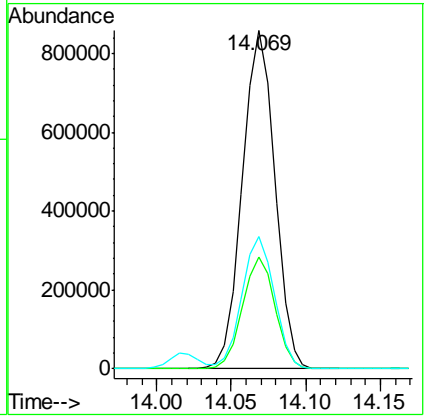
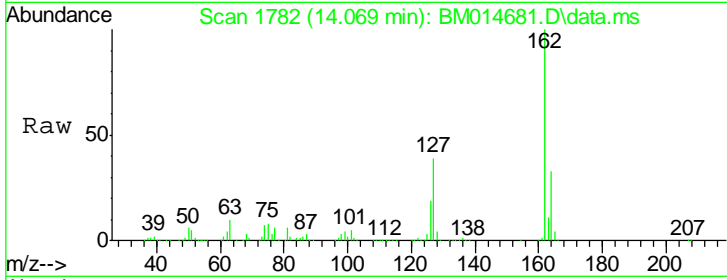


#41  
 2-Chloronaphthalene  
 Concen: 21.12 ng/ul  
 RT: 14.069 min Scan# 17  
 Delta R.T. -0.000 min  
 Lab File: BM014681.D  
 Acq: 06 Apr 2018 14:47

Instrument :  
 BNA\_M  
 ClientSampled :

Tgt Ion: 162 Resp: 1289831

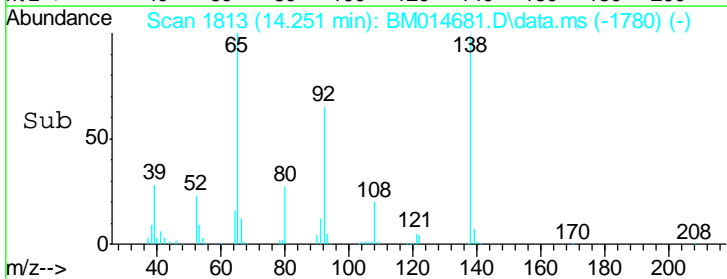
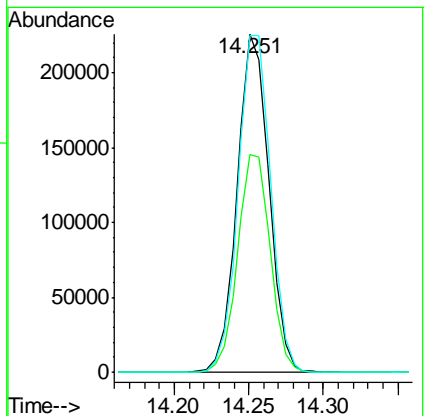
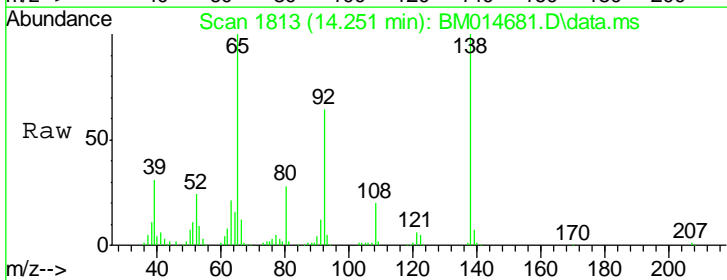
| Ion | Ratio | Lower | Upper |
|-----|-------|-------|-------|
| 162 | 100   |       |       |
| 164 | 32.9  | 25.9  | 38.9  |
| 127 | 38.9  | 34.1  | 51.1  |

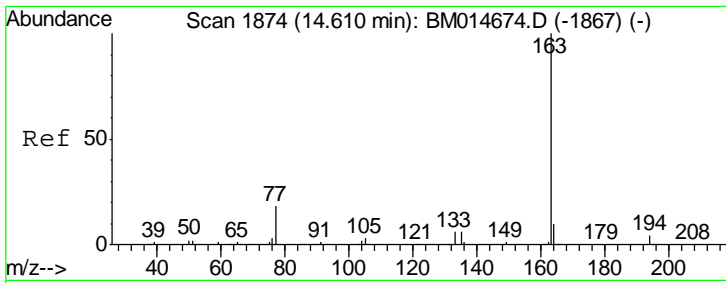


#42  
 2-Nitroaniline  
 Concen: 23.43 ng/ul  
 RT: 14.251 min Scan# 1813  
 Delta R.T. -0.006 min  
 Lab File: BM014681.D  
 Acq: 06 Apr 2018 14:47

Tgt Ion: 65 Resp: 333424

| Ion | Ratio | Lower | Upper  |
|-----|-------|-------|--------|
| 65  | 100   |       |        |
| 92  | 64.5  | 60.4  | 90.6   |
| 138 | 99.6  | 99.8  | 149.6# |

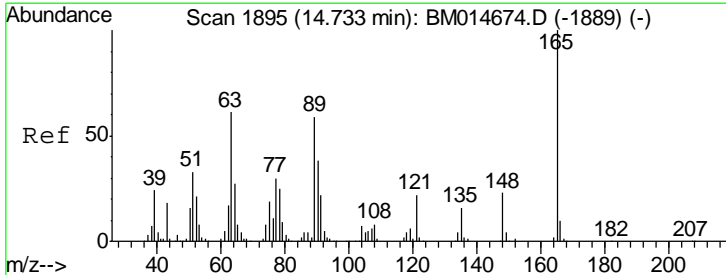
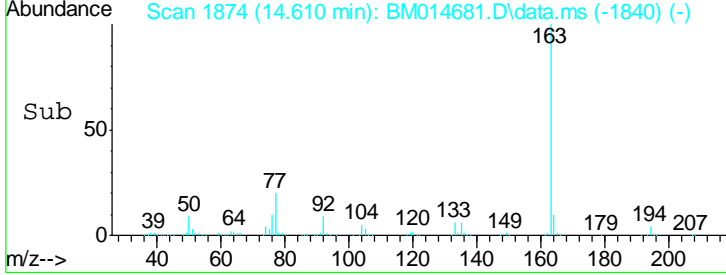
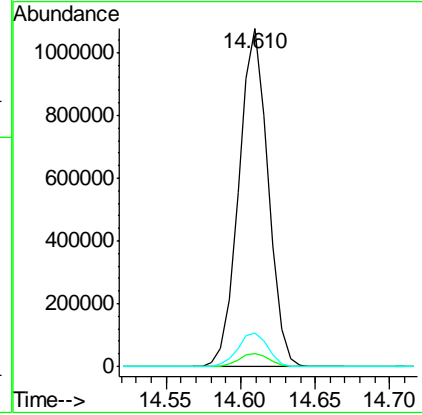
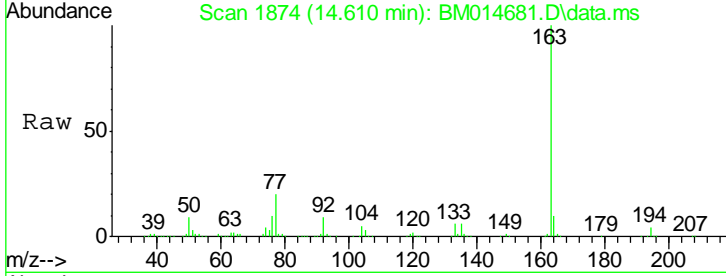




#44  
 Dimethylphthalate  
 Concen: 19.61 ng/ul  
 RT: 14.610 min Scan# 18  
 Delta R.T. -0.000 min  
 Lab File: BM014681.D  
 Acq: 06 Apr 2018 14:47

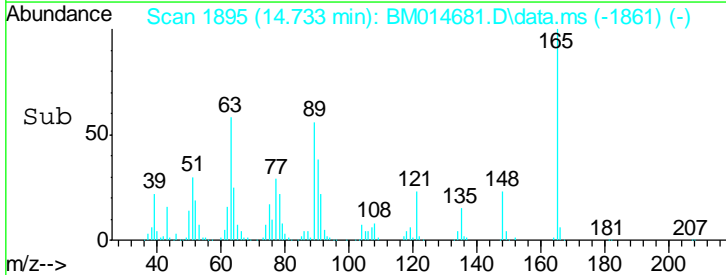
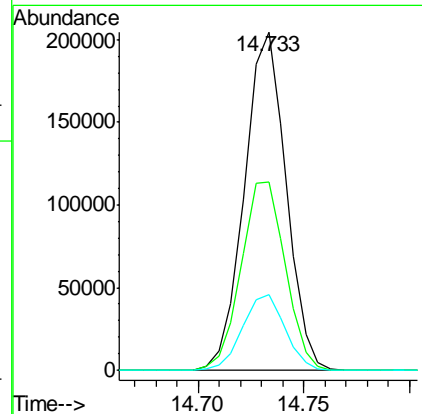
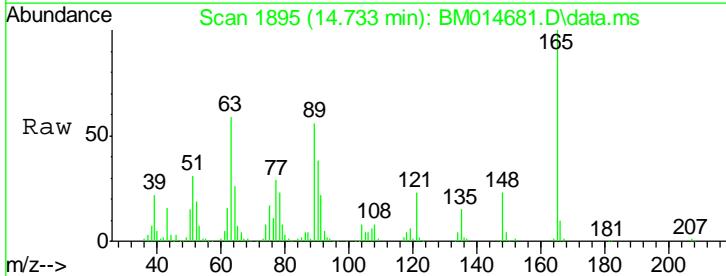
Instrument :  
 BNA\_M  
 ClientSampled :

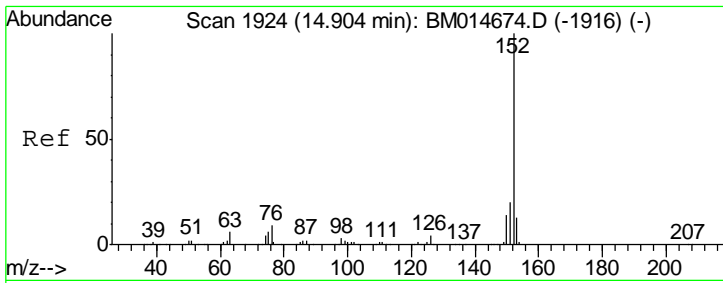
| Tgt Ion | Resp    | Lower | Upper |
|---------|---------|-------|-------|
| 163     | 1468515 |       |       |
| 194     | 4.0     | 3.2   | 4.8   |
| 164     | 9.9     | 7.8   | 11.8  |



#45  
 2,6-Dinitrotoluene  
 Concen: 23.15 ng/ul  
 RT: 14.733 min Scan# 1895  
 Delta R.T. -0.000 min  
 Lab File: BM014681.D  
 Acq: 06 Apr 2018 14:47

| Tgt Ion | Resp   | Lower | Upper |
|---------|--------|-------|-------|
| 165     | 280070 |       |       |
| 89      | 55.8   | 42.4  | 63.6  |
| 121     | 22.5   | 16.6  | 24.8  |

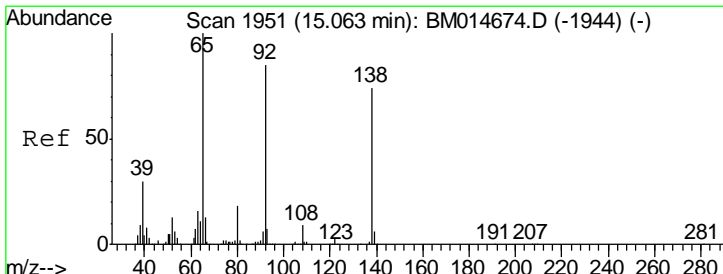
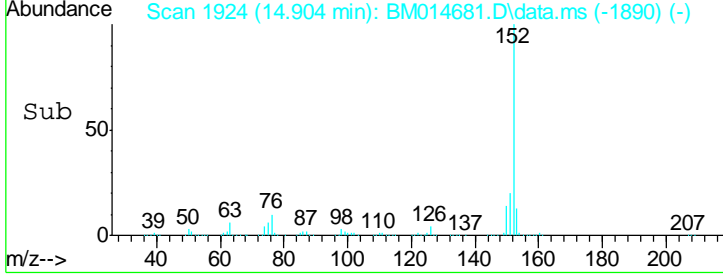
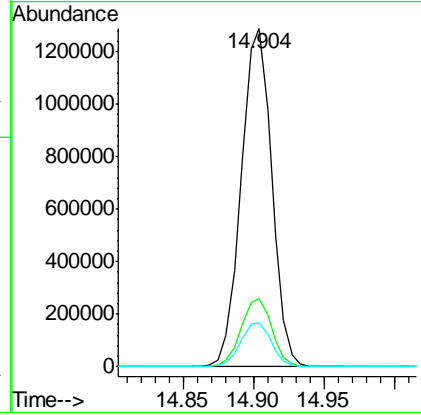
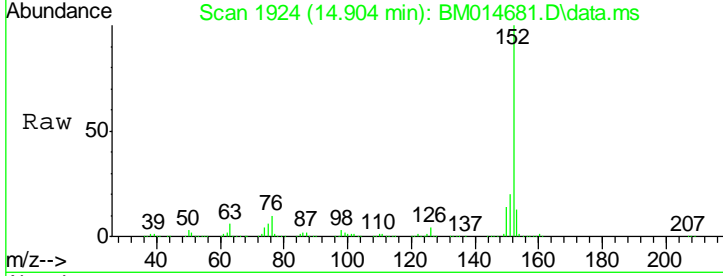




#47  
 Acenaphthylene  
 Concen: 20.78 ng/ul  
 RT: 14.904 min Scan# 19  
 Delta R.T. -0.000 min  
 Lab File: BM014681.D  
 Acq: 06 Apr 2018 14:47

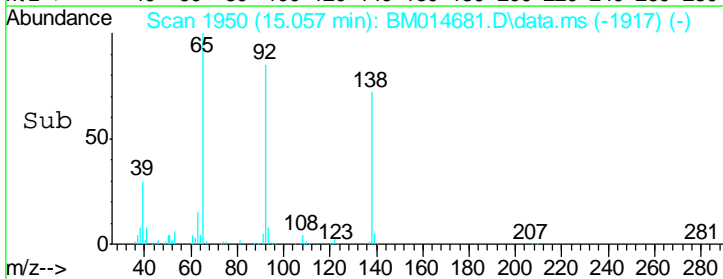
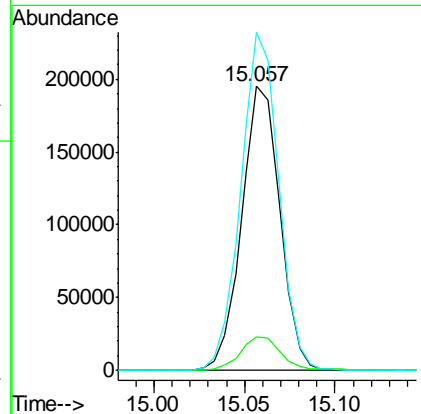
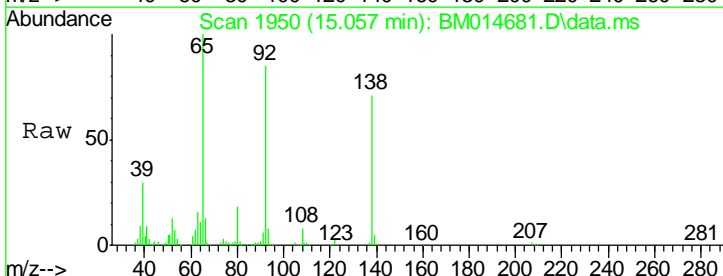
Instrument :  
 BNA\_M  
 ClientSampled :

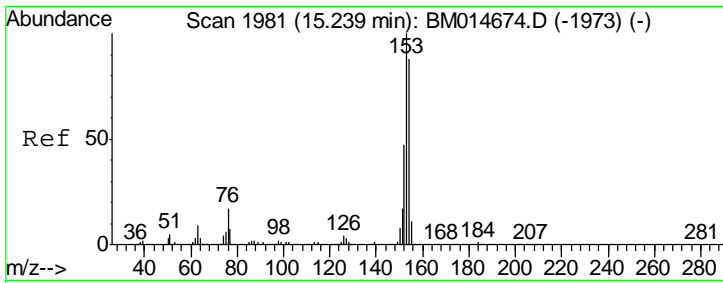
| Tgt Ion | Resp    | Lower | Upper |
|---------|---------|-------|-------|
| 152     | 1945697 |       |       |
| 151     | 20.2    | 15.7  | 23.5  |
| 153     | 12.9    | 10.5  | 15.7  |



#48  
 3-Nitroaniline  
 Concen: 23.44 ng/ul  
 RT: 15.057 min Scan# 1950  
 Delta R.T. -0.006 min  
 Lab File: BM014681.D  
 Acq: 06 Apr 2018 14:47

| Tgt Ion | Resp   | Lower | Upper |
|---------|--------|-------|-------|
| 138     | 286398 |       |       |
| 108     | 11.9   | 8.7   | 13.1  |
| 92      | 119.1  | 88.2  | 132.4 |

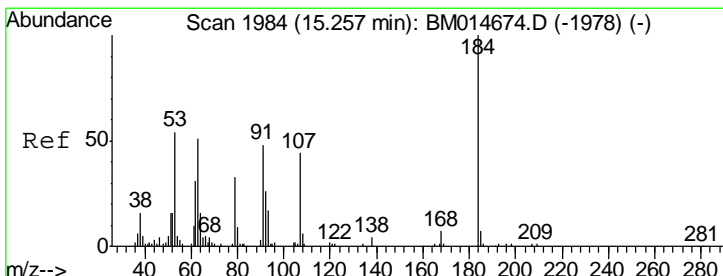
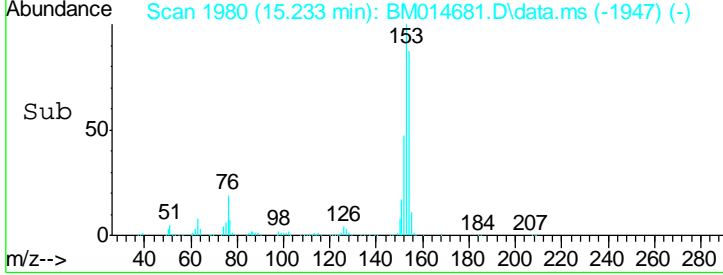
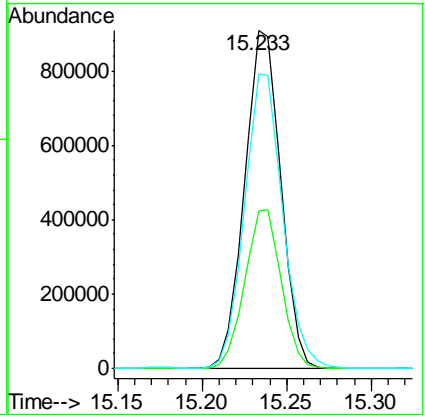
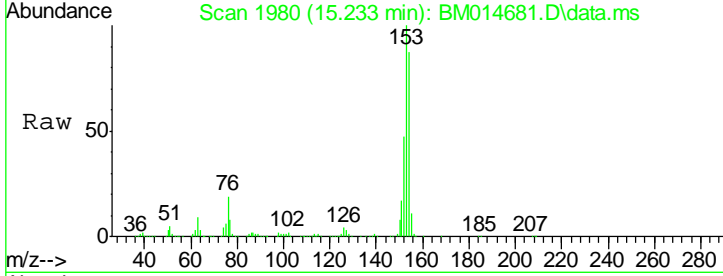




#49  
 Acenaphthene  
 Concen: 20.73 ng/ul  
 RT: 15.233 min Scan# 19  
 Delta R.T. -0.006 min  
 Lab File: BM014681.D  
 Acq: 06 Apr 2018 14:47

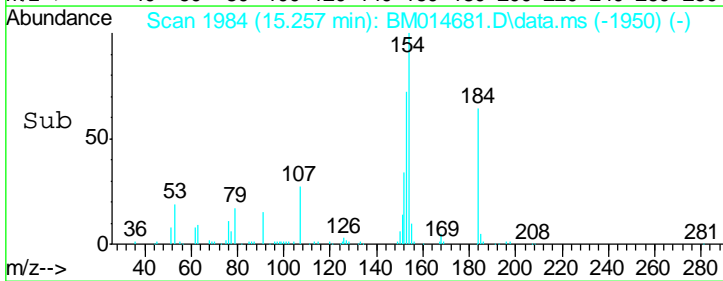
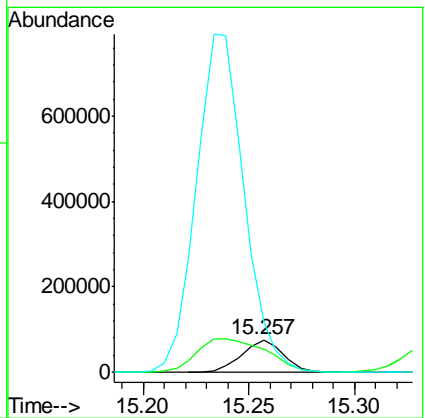
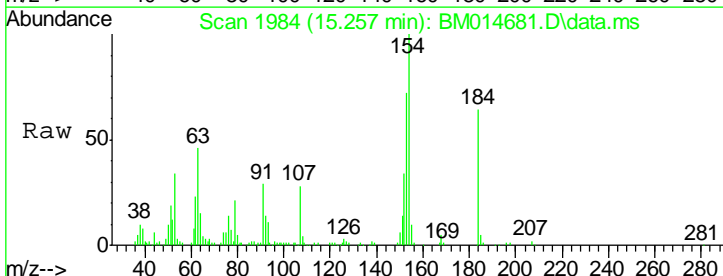
Instrument :  
 BNA\_M  
 ClientSampled :

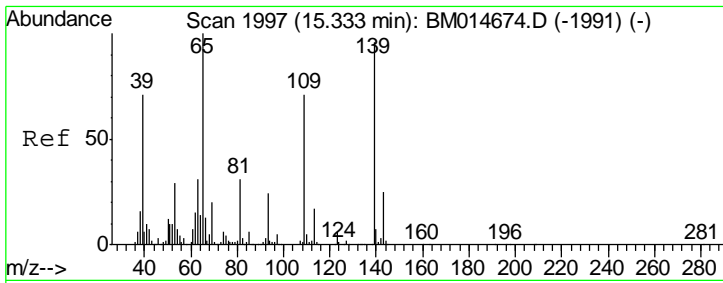
| Tgt Ion | Resp    | Lower | Upper |
|---------|---------|-------|-------|
| 153     | 1355255 |       |       |
| 152     | 46.5    | 38.3  | 57.5  |
| 154     | 87.1    | 71.8  | 107.8 |



#50  
 2,4-Dinitrophenol  
 Concen: 19.85 ng/ul  
 RT: 15.257 min Scan# 1984  
 Delta R.T. -0.000 min  
 Lab File: BM014681.D  
 Acq: 06 Apr 2018 14:47

| Tgt Ion | Resp   | Lower | Upper  |
|---------|--------|-------|--------|
| 184     | 103920 |       |        |
| 63      | 72.0   | 76.0  | 114.0# |
| 154     | 156.2  | 300.0 | 450.0# |

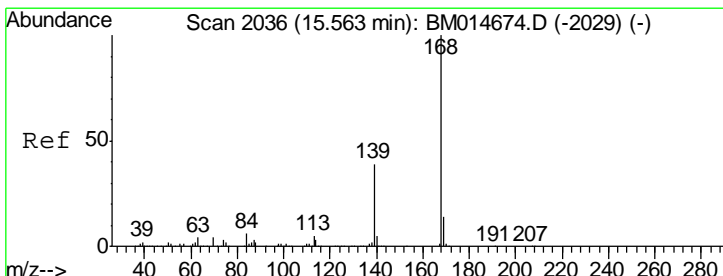
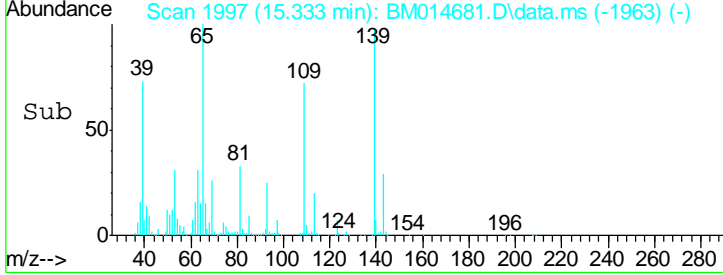
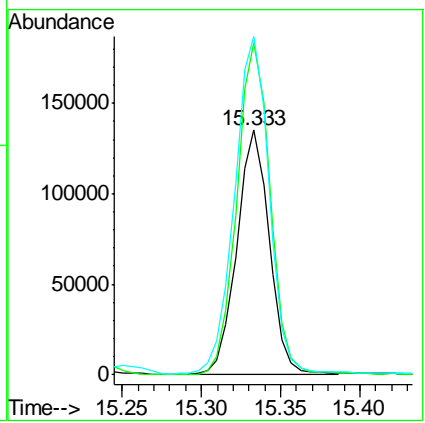
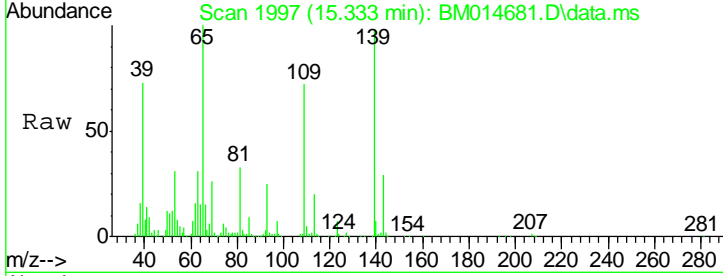




#52  
 4-Nitrophenol  
 Concen: 20.08 ng/ul  
 RT: 15.333 min Scan# 19  
 Delta R.T. -0.000 min  
 Lab File: BM014681.D  
 Acq: 06 Apr 2018 14:47

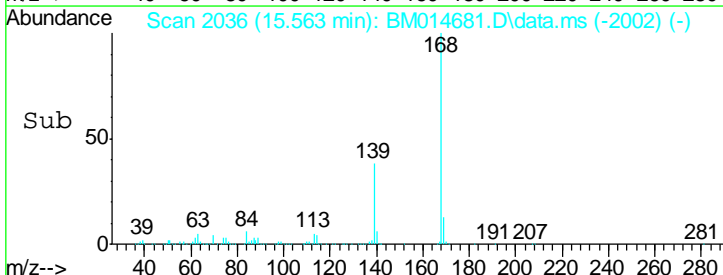
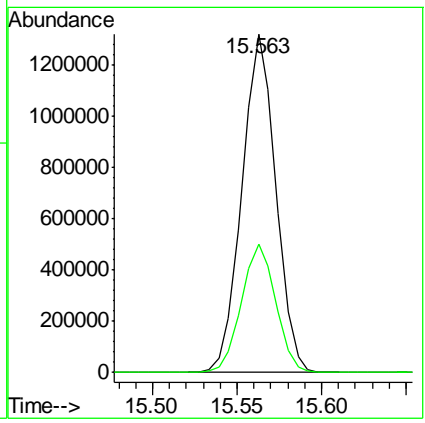
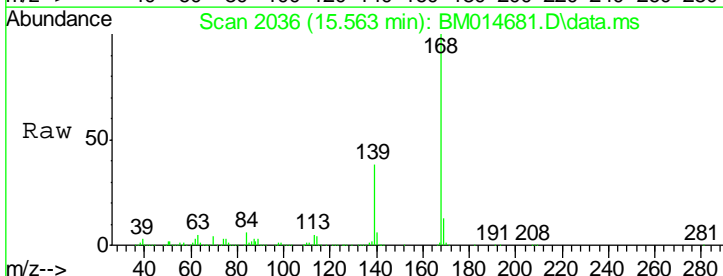
Instrument :  
 BNA\_M  
 ClientSampled :

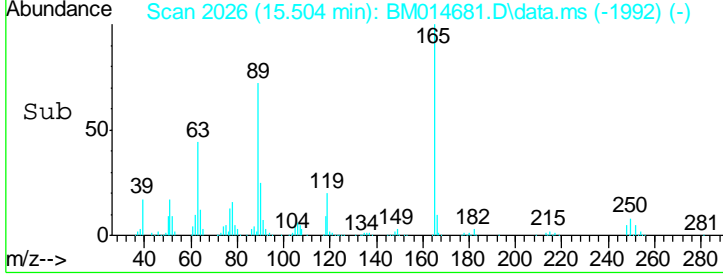
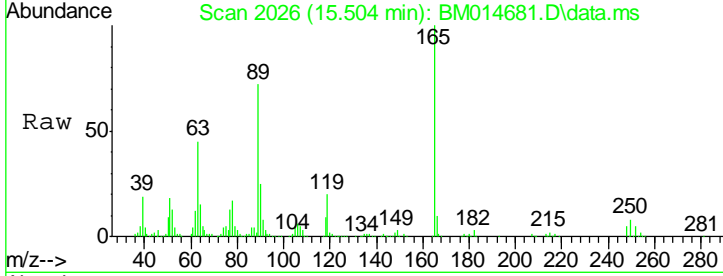
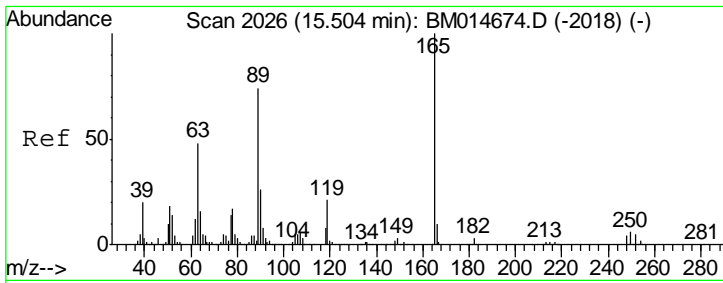
| Tgt Ion | Resp   | Lower | Upper  |
|---------|--------|-------|--------|
| 109     | 192586 |       |        |
| 139     | 136.2  | 103.7 | 155.5  |
| 65      | 138.5  | 89.4  | 134.2# |



#53  
 Dibenzofuran  
 Concen: 20.51 ng/ul  
 RT: 15.563 min Scan# 2036  
 Delta R.T. -0.000 min  
 Lab File: BM014681.D  
 Acq: 06 Apr 2018 14:47

| Tgt Ion | Resp    | Lower | Upper |
|---------|---------|-------|-------|
| 168     | 1840714 |       |       |
| 139     | 37.9    | 32.2  | 48.2  |

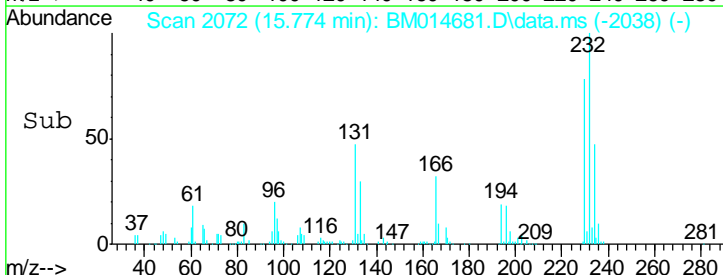
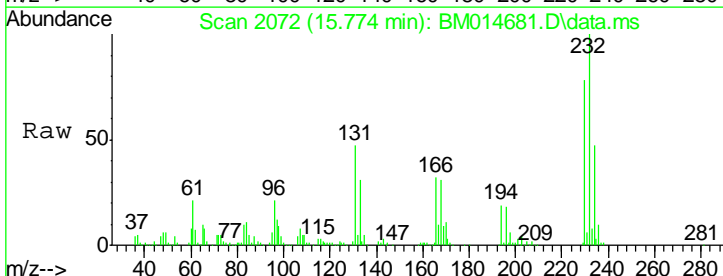
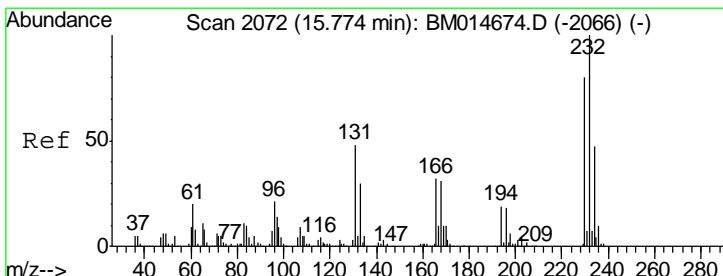
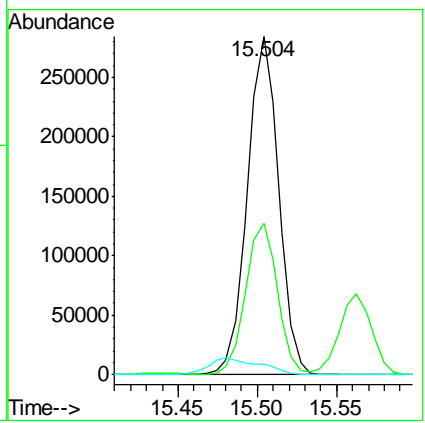




#54  
 2,4-Dinitrotoluene  
 Concen: 22.35 ng/ul  
 RT: 15.504 min Scan# 20  
 Delta R.T. -0.000 min  
 Lab File: BM014681.D  
 Acq: 06 Apr 2018 14:47

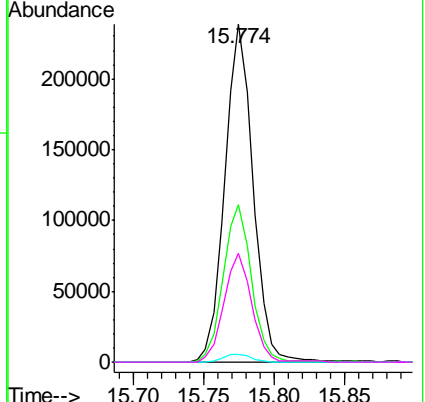
Instrument :  
 BNA\_M  
 ClientSampled :

| Tgt Ion | Resp | Lower | Upper |
|---------|------|-------|-------|
| 165     | 100  |       |       |
| 63      | 44.9 | 29.8  | 44.6# |
| 182     | 3.1  | 2.2   | 3.4   |

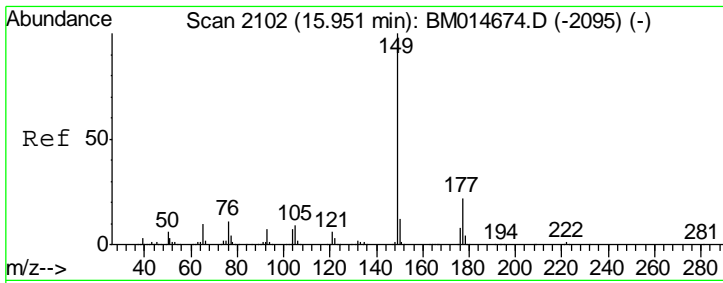


#55  
 2,3,4,6-Tetrachlorophenol  
 Concen: 20.11 ng/ul  
 RT: 15.774 min Scan# 2072  
 Delta R.T. -0.000 min  
 Lab File: BM014681.D  
 Acq: 06 Apr 2018 14:47

| Tgt Ion | Resp | Lower | Upper |
|---------|------|-------|-------|
| 232     | 100  |       |       |
| 131     | 46.8 | 39.4  | 59.2  |
| 130     | 2.4  | 2.2   | 3.2   |
| 166     | 32.2 | 26.6  | 39.8  |



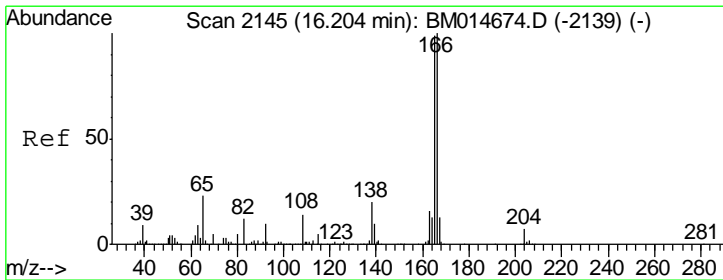
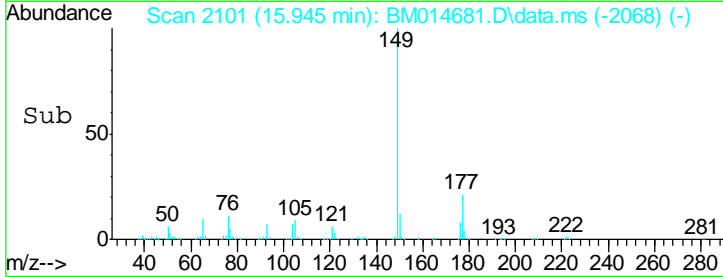
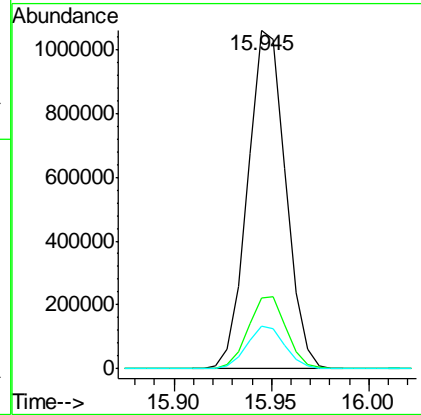
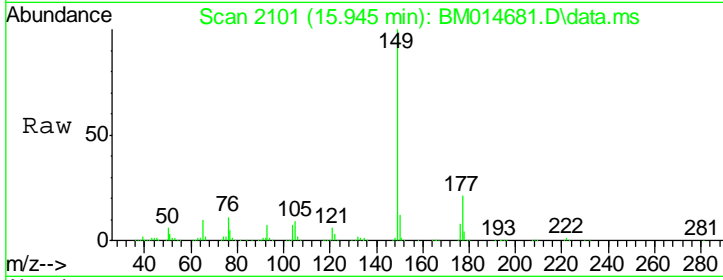




#56  
 Diethylphthalate  
 Concen: 19.00 ng/ul  
 RT: 15.945 min Scan# 21  
 Delta R.T. -0.006 min  
 Lab File: BM014681.D  
 Acq: 06 Apr 2018 14:47

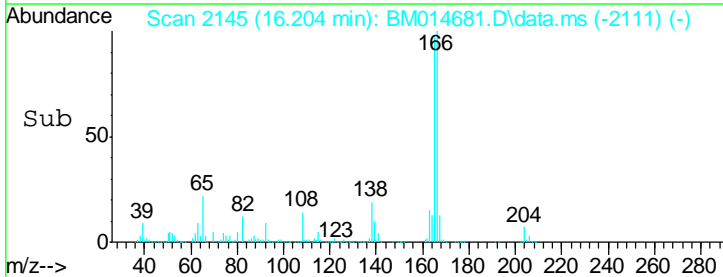
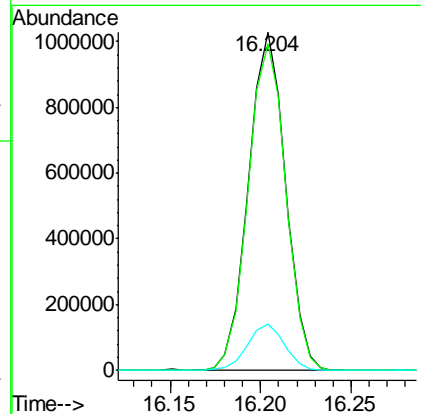
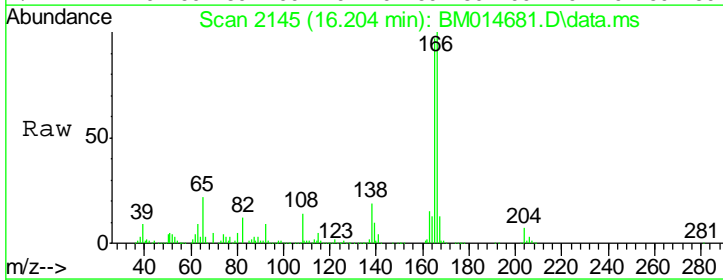
Instrument :  
 BNA\_M  
 ClientSampled :

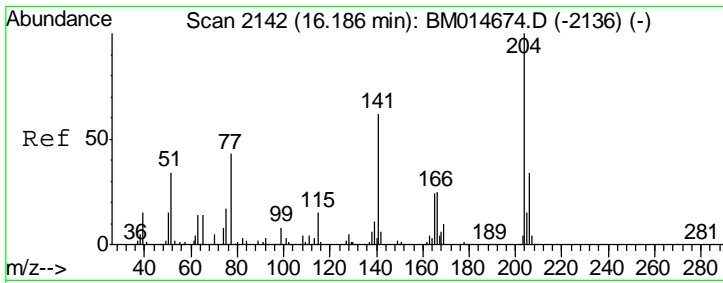
| Tgt Ion | Resp    | Lower | Upper |
|---------|---------|-------|-------|
| 149     | 1424105 |       |       |
| 177     | 20.7    | 17.4  | 26.2  |
| 150     | 12.4    | 10.0  | 15.0  |



#58  
 Fluorene  
 Concen: 19.97 ng/ul  
 RT: 16.204 min Scan# 2145  
 Delta R.T. -0.000 min  
 Lab File: BM014681.D  
 Acq: 06 Apr 2018 14:47

| Tgt Ion | Resp    | Lower | Upper |
|---------|---------|-------|-------|
| 166     | 1459618 |       |       |
| 165     | 96.7    | 78.5  | 117.7 |
| 167     | 13.5    | 10.7  | 16.1  |

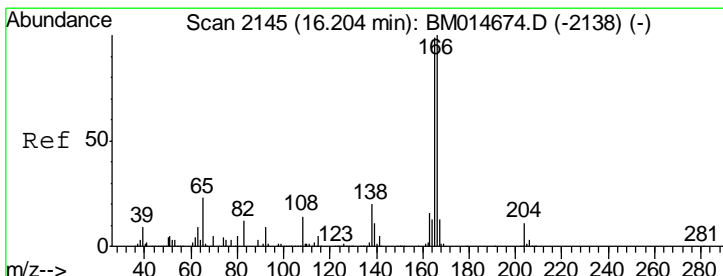
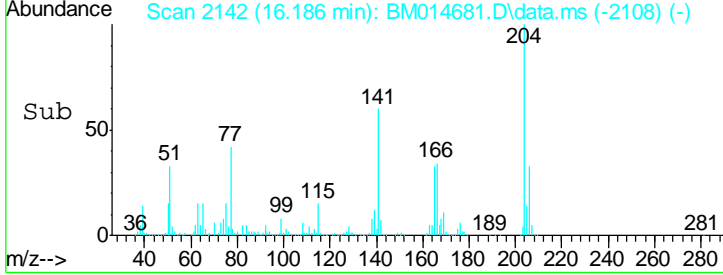
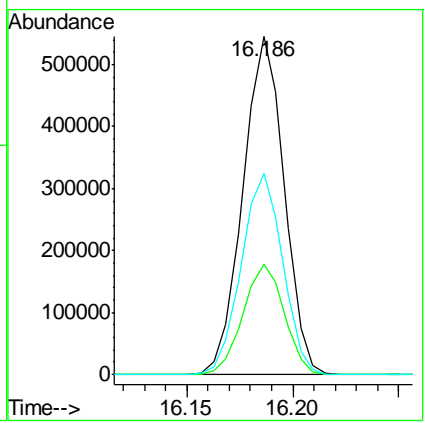
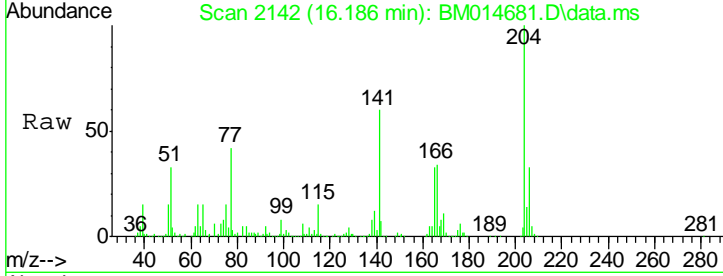




#59  
 4-Chlorophenyl-phenylether  
 Concen: 19.73 ng/ul  
 RT: 16.186 min Scan# 2142  
 Delta R.T. -0.000 min  
 Lab File: BM014681.D  
 Acq: 06 Apr 2018 14:47

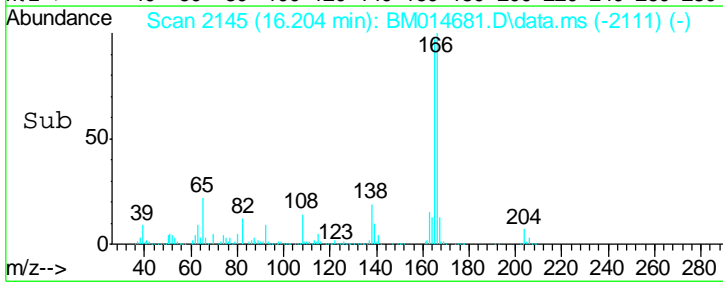
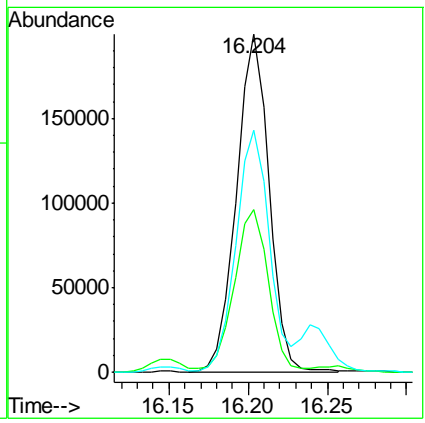
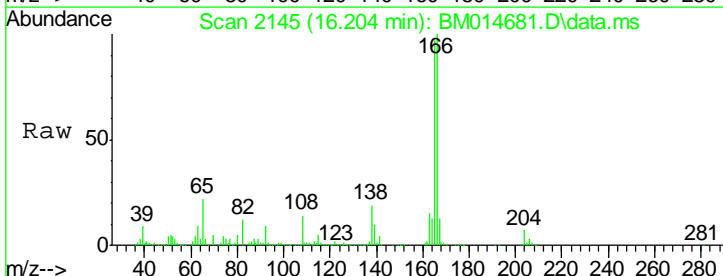
Instrument :  
 BNA\_M  
 ClientSampled :

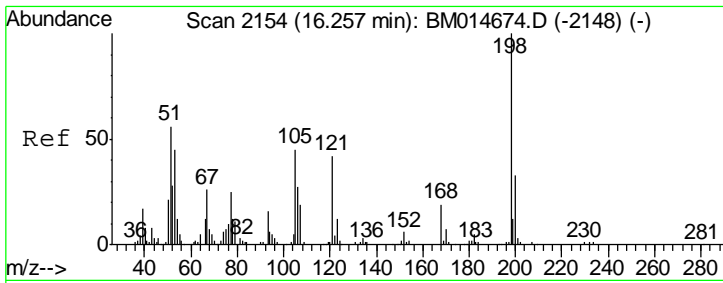
| Tgt Ion | Resp   | Lower | Upper |
|---------|--------|-------|-------|
| 204     | 738467 |       |       |
| 206     | 32.6   | 26.2  | 39.4  |
| 141     | 59.6   | 54.6  | 81.8  |



#60  
 4-Nitroaniline  
 Concen: 20.54 ng/ul  
 RT: 16.204 min Scan# 2145  
 Delta R.T. -0.000 min  
 Lab File: BM014681.D  
 Acq: 06 Apr 2018 14:47

| Tgt Ion | Resp   | Lower | Upper |
|---------|--------|-------|-------|
| 138     | 283485 |       |       |
| 92      | 48.0   | 40.6  | 60.8  |
| 108     | 71.8   | 67.0  | 100.6 |

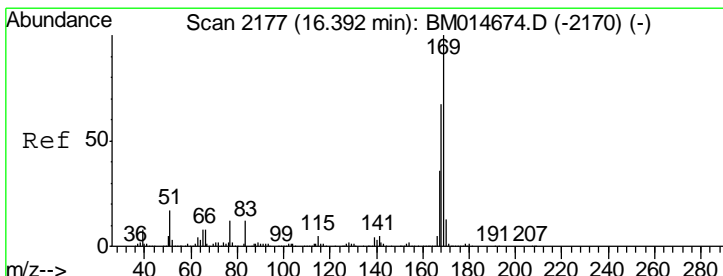
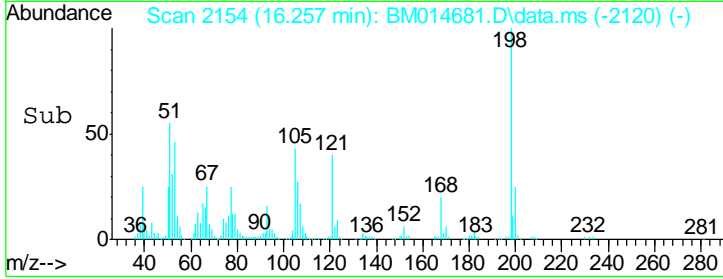
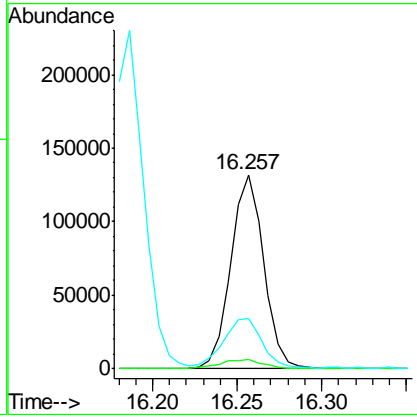
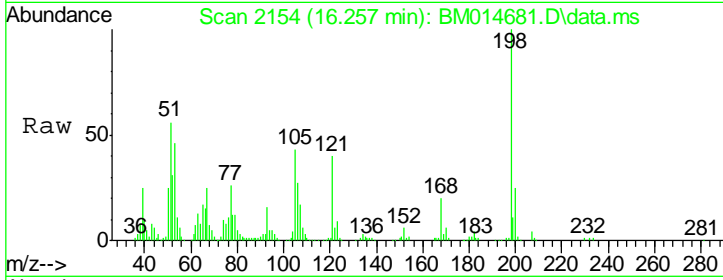




#63  
 4,6-Dinitro-2-methylphenol  
 Concen: 20.31 ng/ul  
 RT: 16.257 min Scan# 21  
 Delta R.T. -0.000 min  
 Lab File: BM014681.D  
 Acq: 06 Apr 2018 14:47

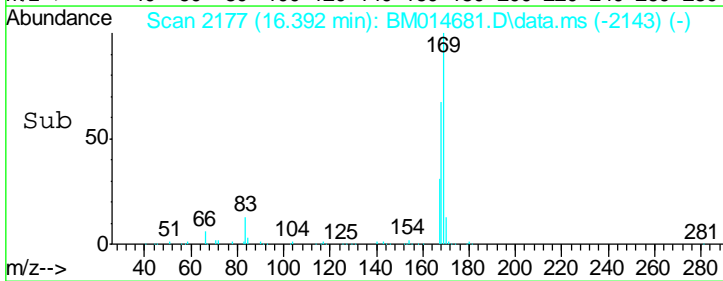
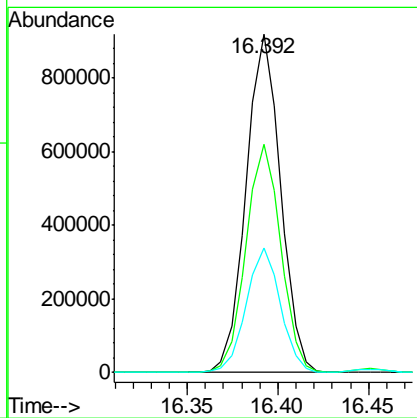
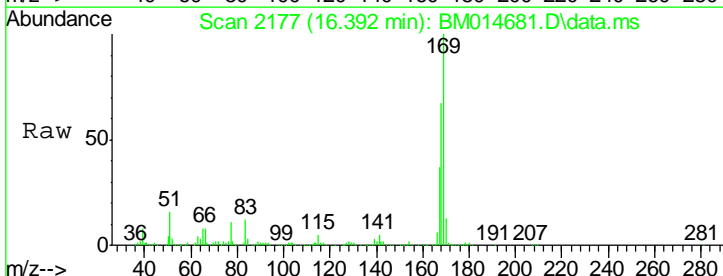
Instrument :  
 BNA\_M  
 ClientSampled :

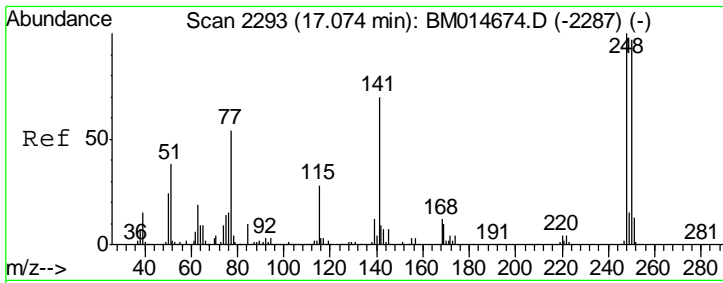
| Tgt Ion | Resp   | Lower | Upper |
|---------|--------|-------|-------|
| 198     | 178372 |       |       |
| 182     | 4.5    | 3.1   | 4.7   |
| 77      | 25.6   | 20.1  | 30.1  |



#64  
 N-Nitrosodiphenylamine  
 Concen: 21.35 ng/ul  
 RT: 16.392 min Scan# 2177  
 Delta R.T. -0.000 min  
 Lab File: BM014681.D  
 Acq: 06 Apr 2018 14:47

| Tgt Ion | Resp    | Lower | Upper |
|---------|---------|-------|-------|
| 169     | 1216028 |       |       |
| 168     | 67.4    | 53.8  | 80.8  |
| 167     | 36.8    | 29.3  | 43.9  |

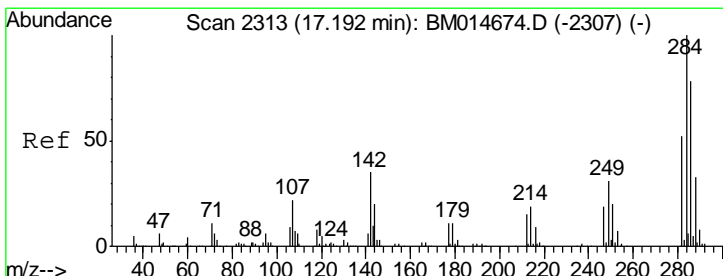
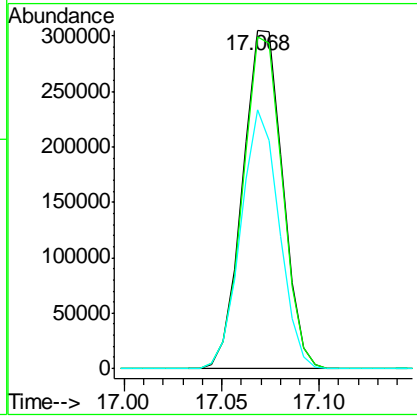
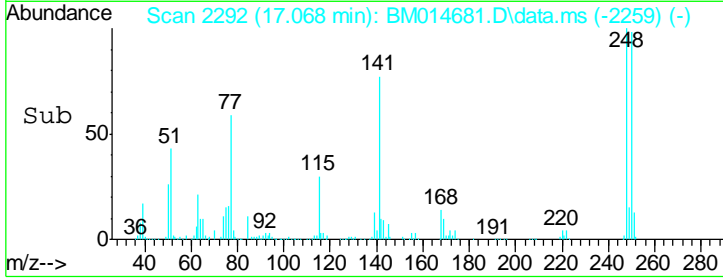
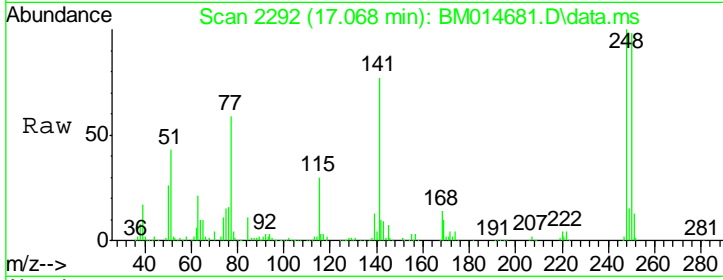




#65  
 4-Bromophenyl-phenylether  
 Concen: 20.23 ng/ul  
 RT: 17.068 min Scan# 22  
 Delta R.T. -0.006 min  
 Lab File: BM014681.D  
 Acq: 06 Apr 2018 14:47

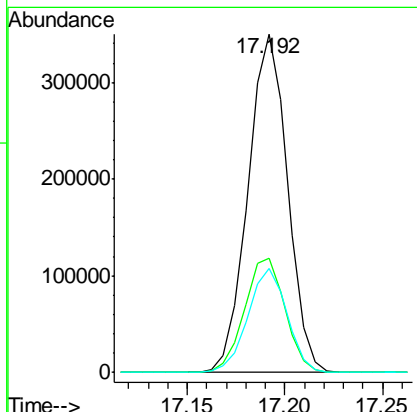
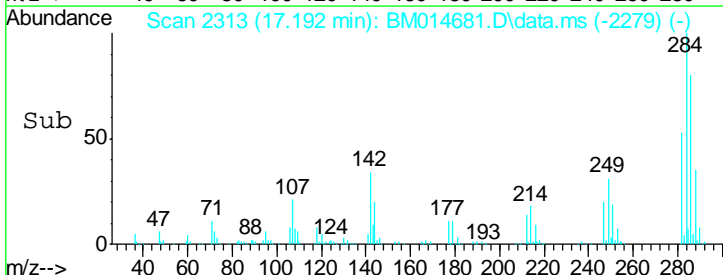
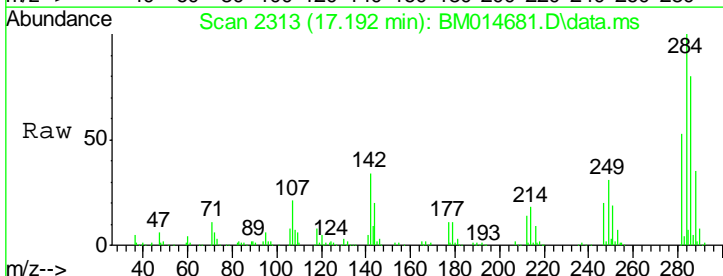
Instrument :  
 BNA\_M  
 ClientSampled :

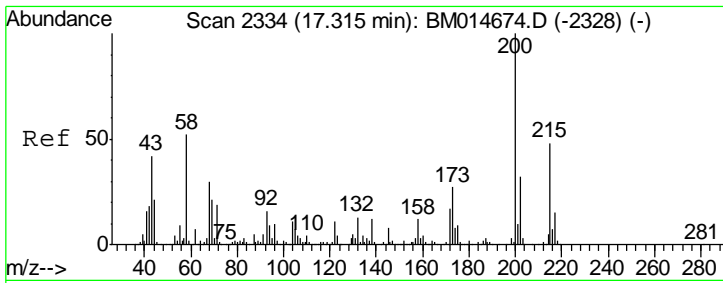
| Tgt Ion | Resp   | Lower | Upper |
|---------|--------|-------|-------|
| 248     | 432274 |       |       |
| 248     | 100    |       |       |
| 250     | 98.0   | 78.7  | 118.1 |
| 141     | 76.6   | 72.2  | 108.2 |



#66  
 Hexachlorobenzene  
 Concen: 20.55 ng/ul  
 RT: 17.192 min Scan# 2313  
 Delta R.T. -0.000 min  
 Lab File: BM014681.D  
 Acq: 06 Apr 2018 14:47

| Tgt Ion | Resp   | Lower | Upper |
|---------|--------|-------|-------|
| 284     | 491064 |       |       |
| 284     | 100    |       |       |
| 142     | 33.8   | 33.1  | 49.7  |
| 249     | 30.7   | 27.1  | 40.7  |

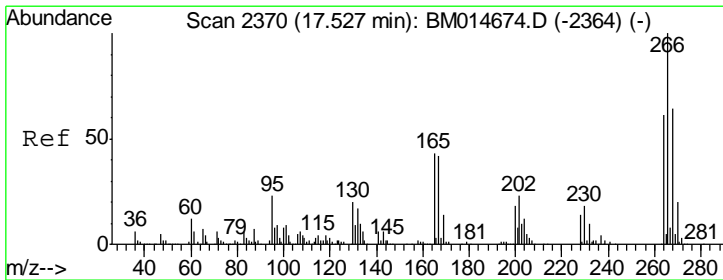
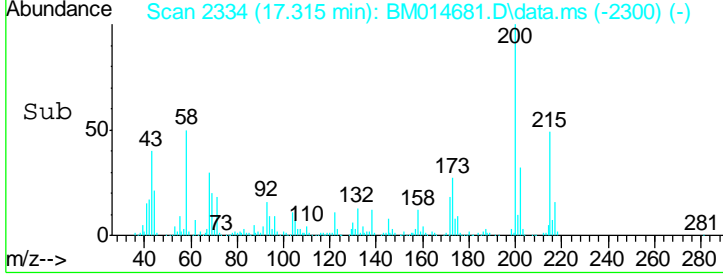
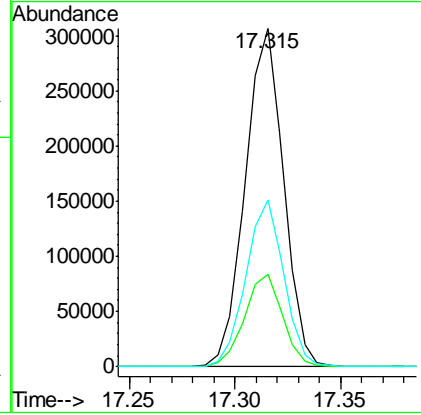
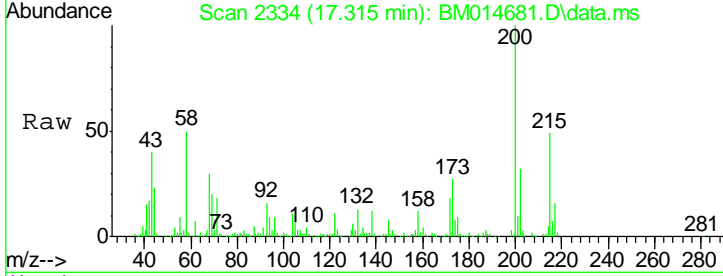




#67  
 Atrazine  
 Concen: 19.42 ng/ul  
 RT: 17.315 min Scan# 23  
 Delta R.T. -0.000 min  
 Lab File: BM014681.D  
 Acq: 06 Apr 2018 14:47

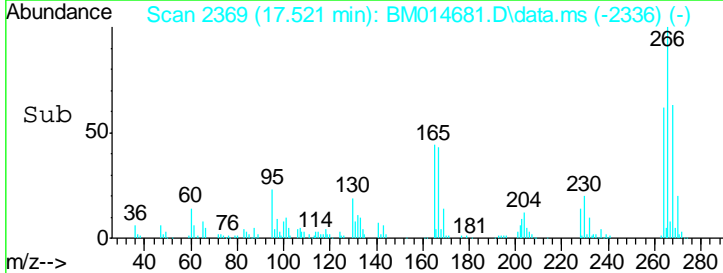
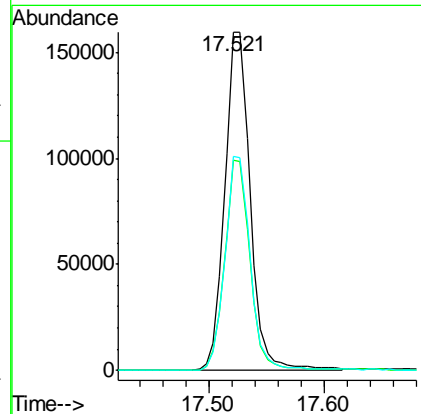
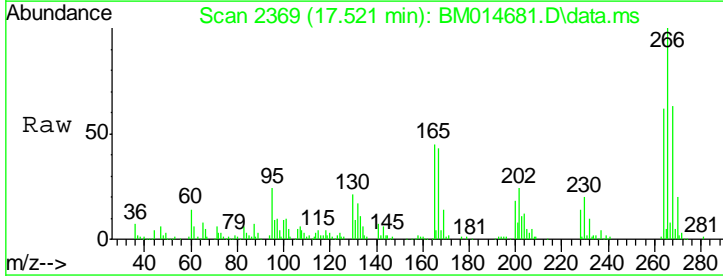
Instrument :  
 BNA\_M  
 ClientSampled :

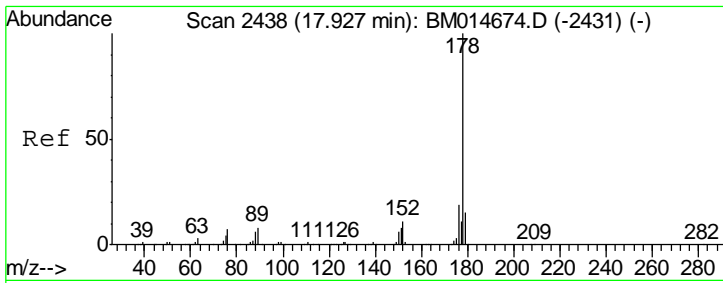
| Tgt Ion | Resp   | Lower | Upper |
|---------|--------|-------|-------|
| 200     | 385252 |       |       |
| 173     | 27.3   | 21.6  | 32.4  |
| 215     | 49.2   | 37.0  | 55.4  |



#68  
 Pentachlorophenol  
 Concen: 19.34 ng/ul  
 RT: 17.521 min Scan# 2369  
 Delta R.T. -0.006 min  
 Lab File: BM014681.D  
 Acq: 06 Apr 2018 14:47

| Tgt Ion | Resp   | Lower | Upper |
|---------|--------|-------|-------|
| 266     | 242790 |       |       |
| 264     | 62.3   | 50.5  | 75.7  |
| 268     | 63.4   | 50.9  | 76.3  |



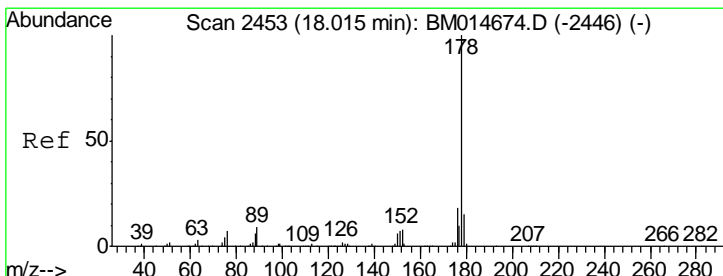
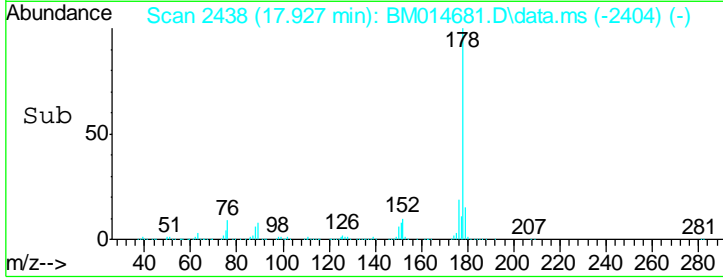
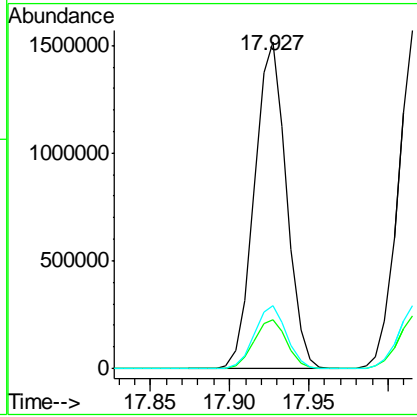
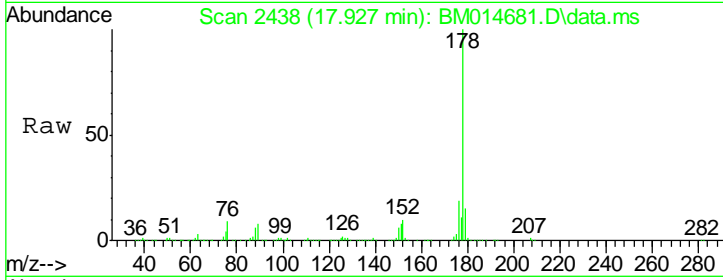


#69  
 Phenanthrene  
 Concen: 20.83 ng/ul  
 RT: 17.927 min Scan# 24  
 Delta R.T. -0.000 min  
 Lab File: BM014681.D  
 Acq: 06 Apr 2018 14:47

Instrument :  
 BNA\_M  
 ClientSampled :

Tgt Ion:178 Resp: 2126802

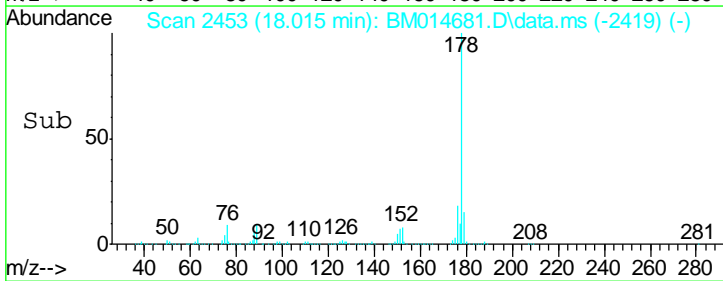
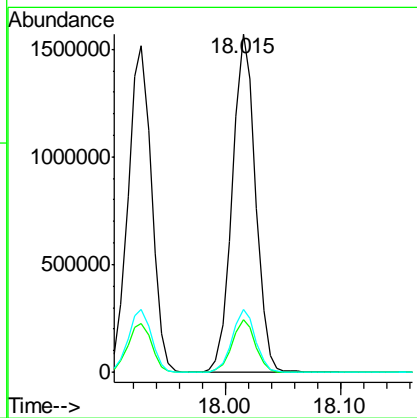
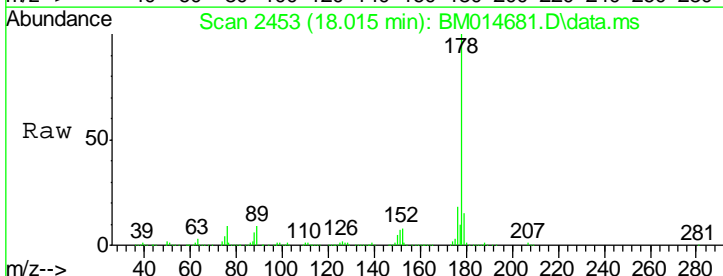
| Ion | Ratio | Lower | Upper |
|-----|-------|-------|-------|
| 178 | 100   |       |       |
| 179 | 15.1  | 12.2  | 18.4  |
| 176 | 19.2  | 15.6  | 23.4  |

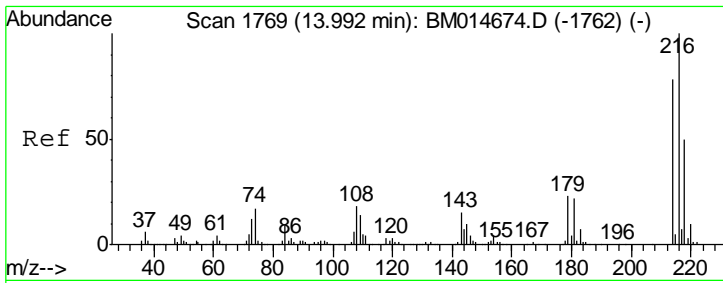


#71  
 Anthracene  
 Concen: 20.96 ng/ul  
 RT: 18.015 min Scan# 2453  
 Delta R.T. -0.000 min  
 Lab File: BM014681.D  
 Acq: 06 Apr 2018 14:47

Tgt Ion:178 Resp: 2179017

| Ion | Ratio | Lower | Upper |
|-----|-------|-------|-------|
| 178 | 100   |       |       |
| 179 | 15.5  | 12.1  | 18.1  |
| 176 | 18.4  | 14.8  | 22.2  |

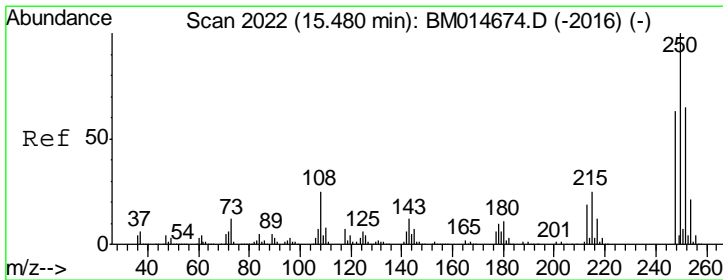
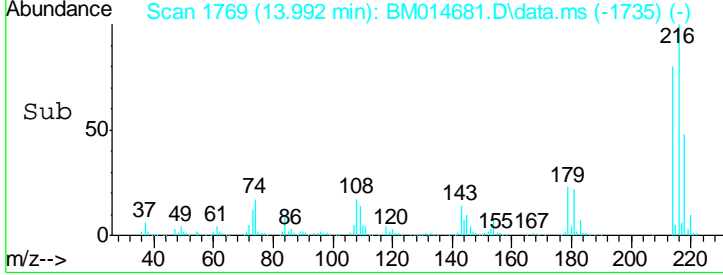
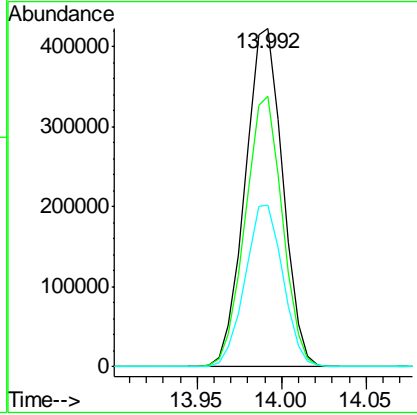
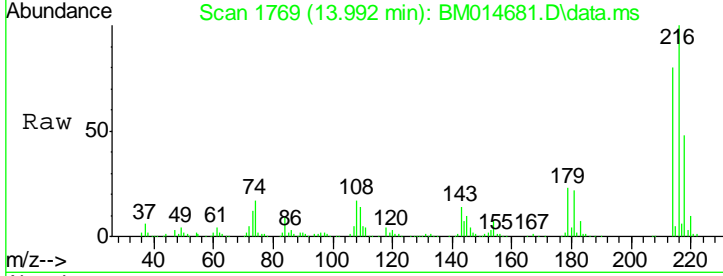




#72  
 1,2,3,4-Tetrachlorobenzene  
 Concen: 22.43 ng/uL  
 RT: 13.992 min Scan# 17  
 Delta R.T. -0.000 min  
 Lab File: BM014681.D  
 Acq: 06 Apr 2018 14:47

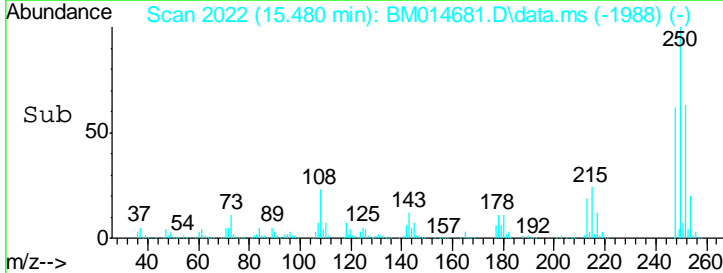
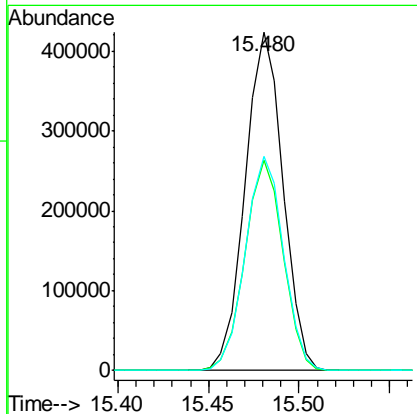
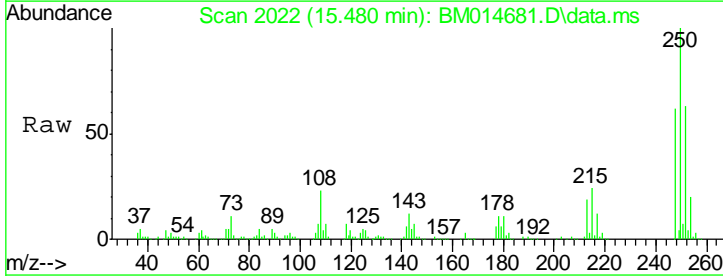
Instrument :  
 BNA\_M  
 ClientSampled :

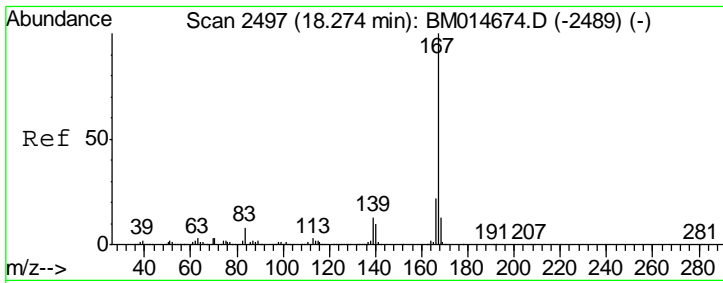
| Tgt Ion | Resp | Lower | Upper |
|---------|------|-------|-------|
| 216     | 100  |       |       |
| 214     | 80.0 | 62.5  | 93.7  |
| 218     | 47.6 | 38.4  | 57.6  |



#73  
 Pentachlorobenzene  
 Concen: 21.82 ng/uL  
 RT: 15.480 min Scan# 2022  
 Delta R.T. -0.000 min  
 Lab File: BM014681.D  
 Acq: 06 Apr 2018 14:47

| Tgt Ion | Resp | Lower | Upper |
|---------|------|-------|-------|
| 250     | 100  |       |       |
| 248     | 62.3 | 50.6  | 75.8  |
| 252     | 63.5 | 51.4  | 77.0  |

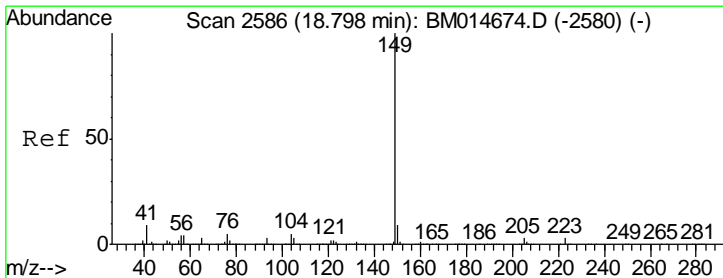
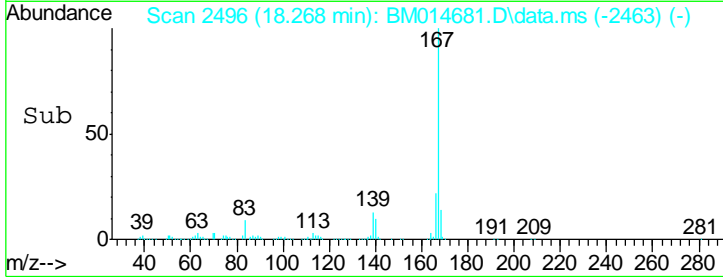
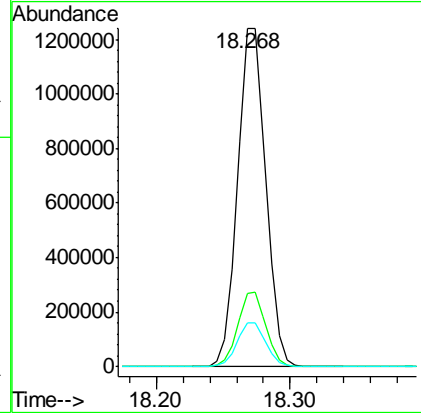
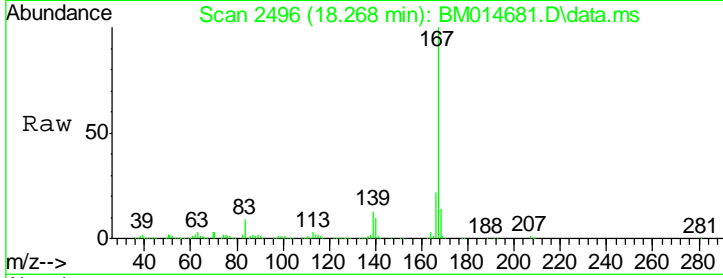




#74  
 Carbazole  
 Concen: 21.14 ng/ul  
 RT: 18.268 min Scan# 24  
 Delta R.T. -0.006 min  
 Lab File: BM014681.D  
 Acq: 06 Apr 2018 14:47

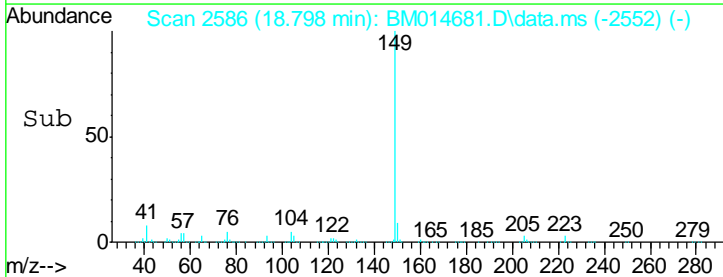
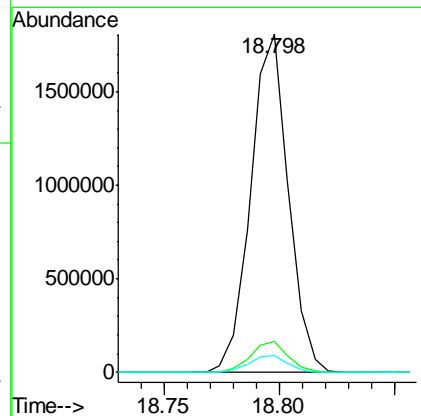
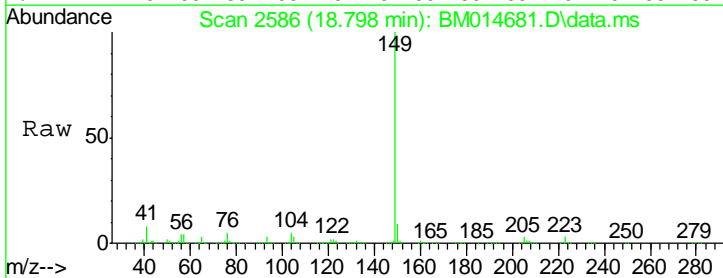
Instrument :  
 BNA\_M  
 ClientSampled :

| Tgt Ion | Resp    | Lower | Upper |
|---------|---------|-------|-------|
| 167     | 1819593 |       |       |
| 166     | 21.6    | 17.0  | 25.6  |
| 139     | 12.9    | 11.0  | 16.4  |

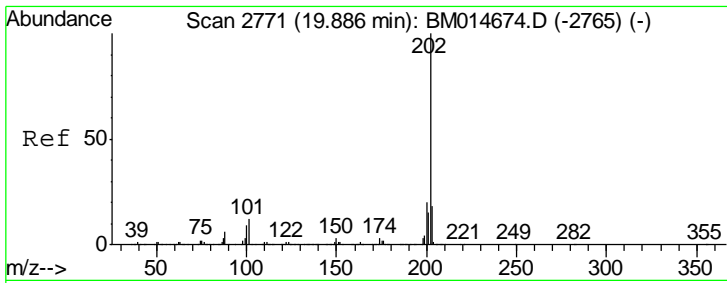


#75  
 Di-n-butylphthalate  
 Concen: 19.27 ng/ul  
 RT: 18.798 min Scan# 2586  
 Delta R.T. -0.000 min  
 Lab File: BM014681.D  
 Acq: 06 Apr 2018 14:47

| Tgt Ion | Resp    | Lower | Upper |
|---------|---------|-------|-------|
| 149     | 2058786 |       |       |
| 150     | 9.1     | 7.4   | 11.0  |
| 104     | 4.9     | 4.0   | 6.0   |



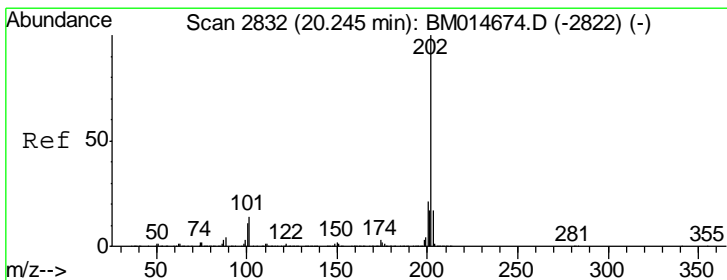
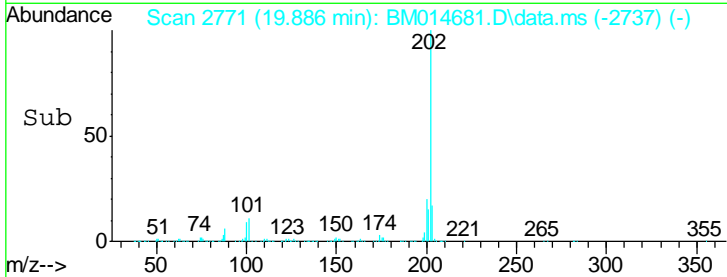
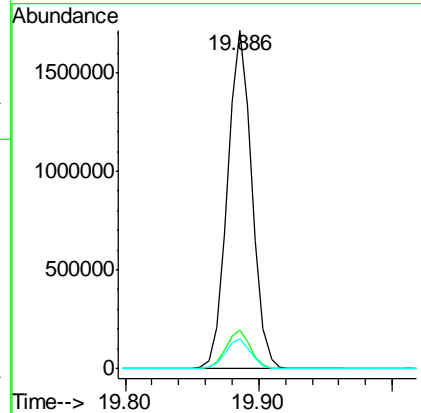
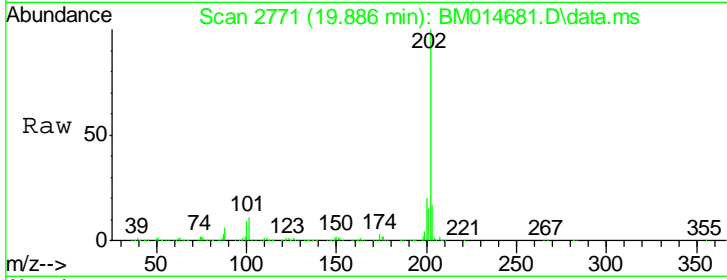




#76  
 Fluoranthene  
 Concen: 20.88 ng/ul  
 RT: 19.886 min Scan# 27  
 Delta R.T. -0.000 min  
 Lab File: BM014681.D  
 Acq: 06 Apr 2018 14:47

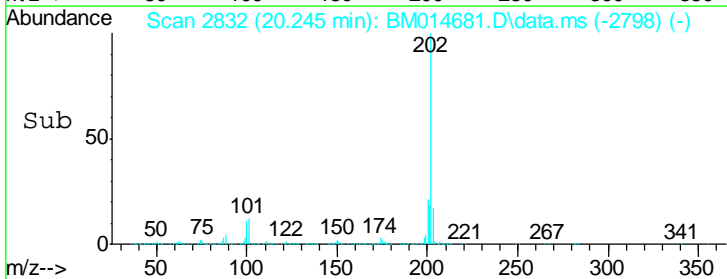
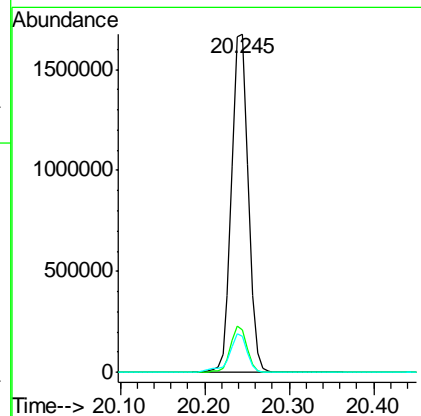
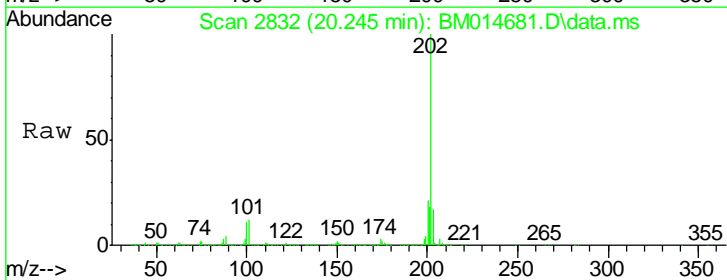
Instrument :  
 BNA\_M  
 ClientSampled :

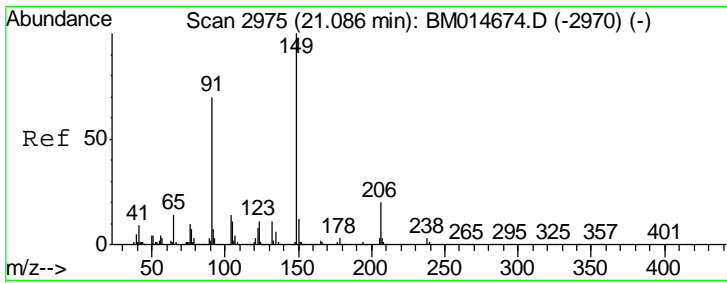
| Tgt Ion | Ratio | Lower | Upper |
|---------|-------|-------|-------|
| 202     | 100   |       |       |
| 101     | 11.5  | 8.8   | 13.2  |
| 100     | 8.9   | 6.6   | 9.8   |



#79  
 Pyrene  
 Concen: 21.19 ng/ul  
 RT: 20.245 min Scan# 2832  
 Delta R.T. -0.000 min  
 Lab File: BM014681.D  
 Acq: 06 Apr 2018 14:47

| Tgt Ion | Ratio | Lower | Upper |
|---------|-------|-------|-------|
| 202     | 100   |       |       |
| 101     | 12.5  | 10.2  | 15.2  |
| 100     | 10.7  | 8.5   | 12.7  |

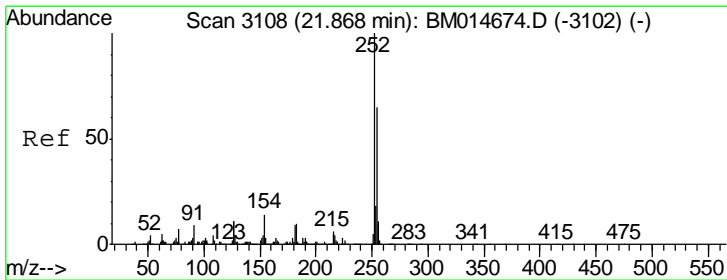
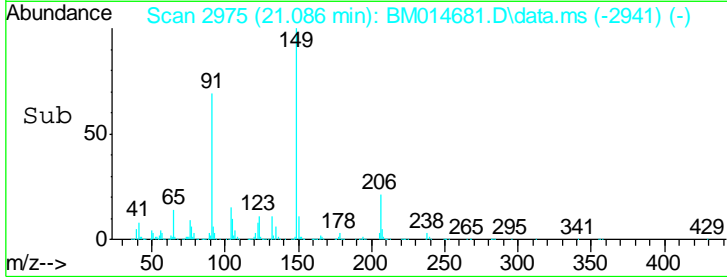
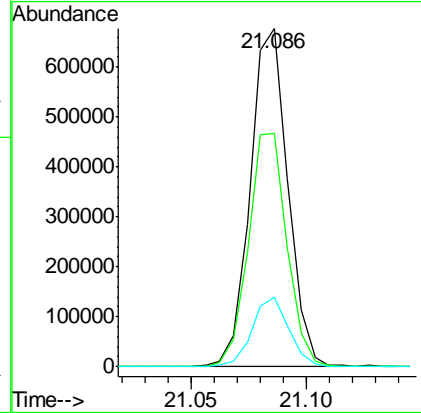
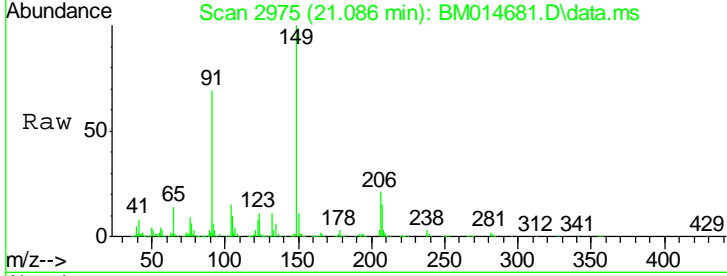




#80  
 Butylbenzylphthalate  
 Concen: 20.51 ng/ul  
 RT: 21.086 min Scan# 29  
 Delta R.T. -0.000 min  
 Lab File: BM014681.D  
 Acq: 06 Apr 2018 14:47

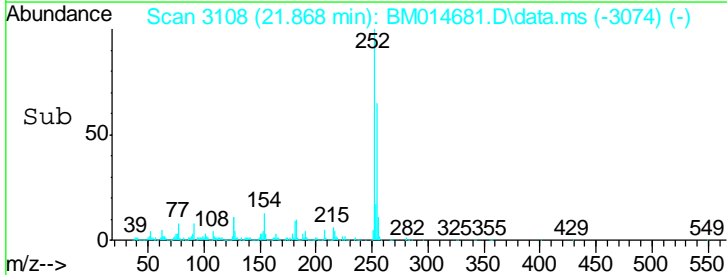
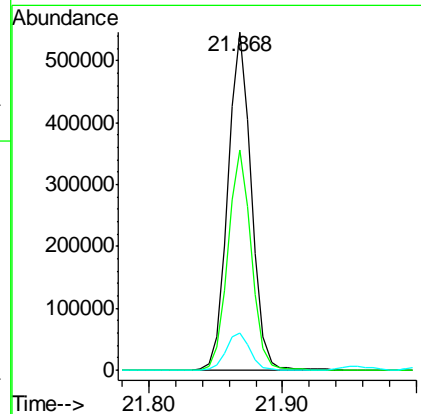
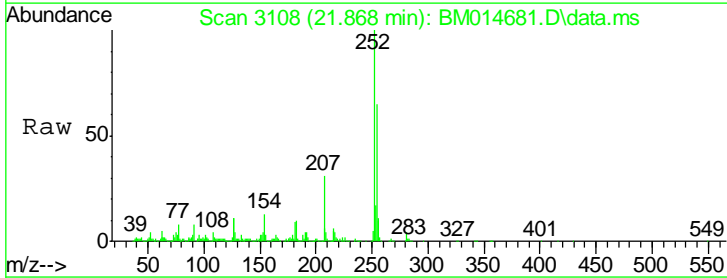
Instrument :  
 BNA\_M  
 ClientSampled :

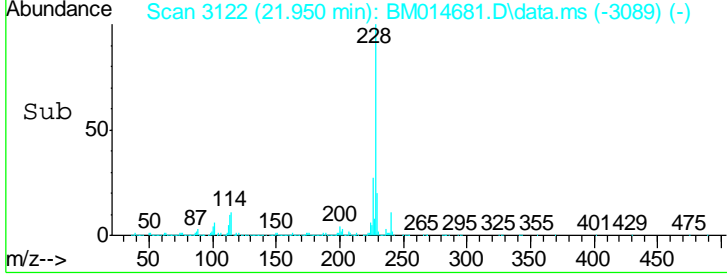
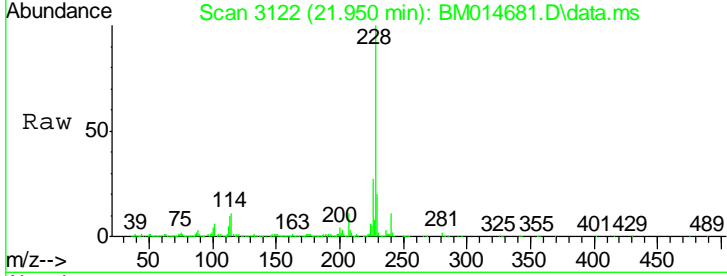
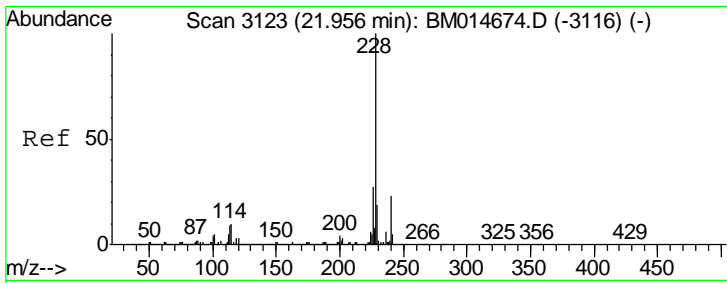
| Tgt Ion | Resp | Lower | Upper |
|---------|------|-------|-------|
| 149     | 100  |       |       |
| 91      | 68.8 | 53.4  | 80.2  |
| 206     | 20.7 | 16.6  | 24.8  |



#81  
 3,3'-Dichlorobenzidine  
 Concen: 21.81 ng/ul  
 RT: 21.868 min Scan# 3108  
 Delta R.T. -0.000 min  
 Lab File: BM014681.D  
 Acq: 06 Apr 2018 14:47

| Tgt Ion | Resp | Lower | Upper |
|---------|------|-------|-------|
| 252     | 100  |       |       |
| 254     | 65.0 | 52.2  | 78.2  |
| 126     | 10.9 | 9.4   | 14.2  |

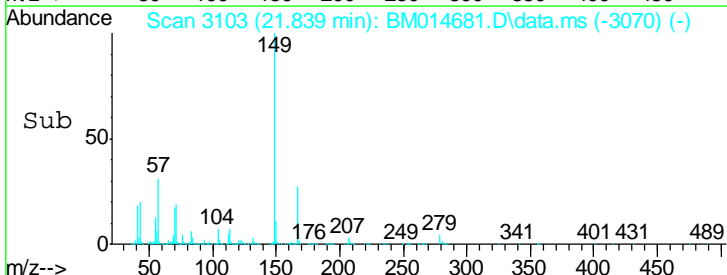
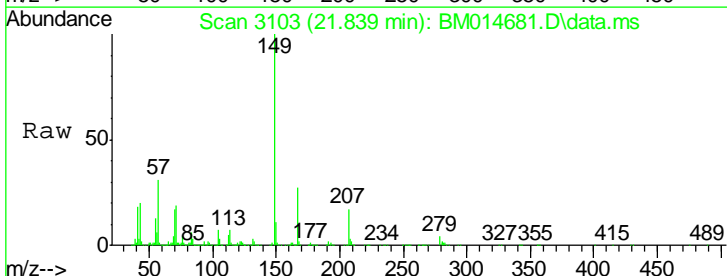
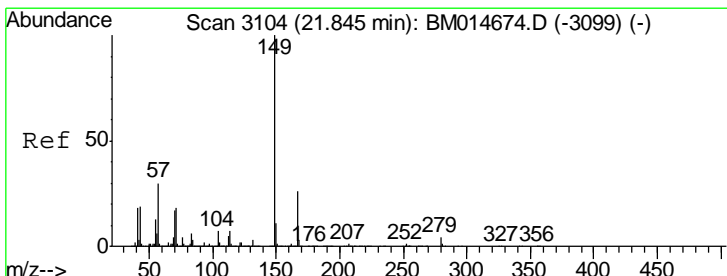
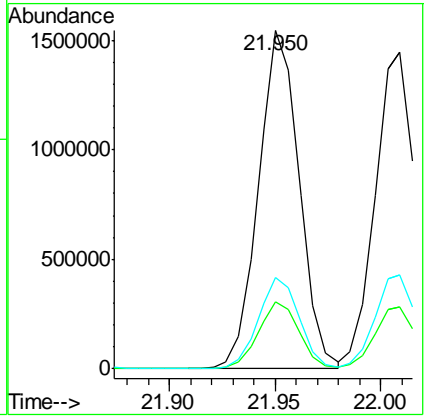




#82  
 Benzo(a)anthracene  
 Concen: 20.69 ng/ul  
 RT: 21.950 min Scan# 31  
 Delta R.T. -0.006 min  
 Lab File: BM014681.D  
 Acq: 06 Apr 2018 14:47

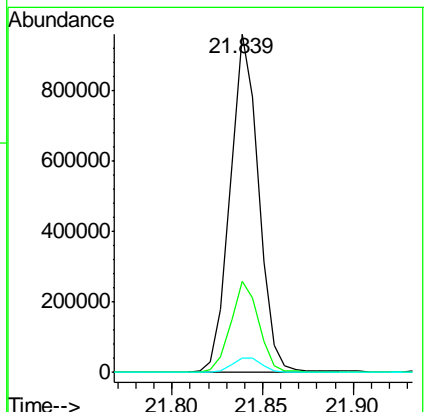
Instrument :  
 BNA\_M  
 ClientSampled :

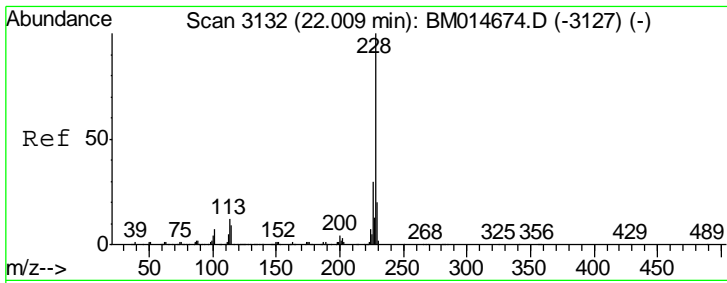
| Tgt Ion | Resp | Lower | Upper |
|---------|------|-------|-------|
| 228     | 100  |       |       |
| 229     | 19.7 | 15.7  | 23.5  |
| 226     | 26.8 | 21.8  | 32.6  |



#83  
 Bis(2-ethylhexyl)phthalate  
 Concen: 18.73 ng/ul  
 RT: 21.839 min Scan# 3103  
 Delta R.T. -0.006 min  
 Lab File: BM014681.D  
 Acq: 06 Apr 2018 14:47

| Tgt Ion | Resp | Lower | Upper |
|---------|------|-------|-------|
| 149     | 100  |       |       |
| 167     | 26.9 | 21.6  | 32.4  |
| 279     | 4.2  | 3.0   | 4.4   |

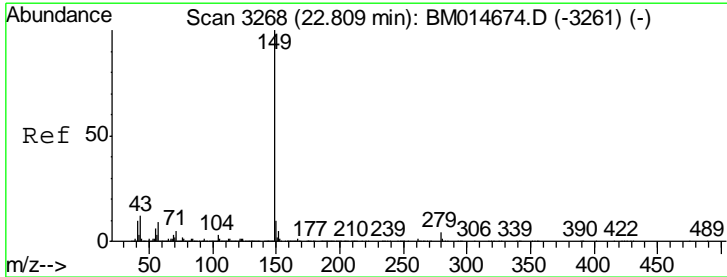
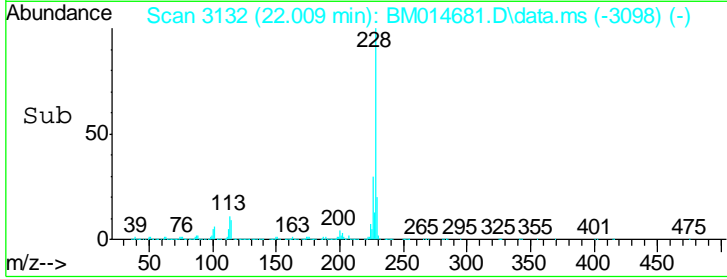
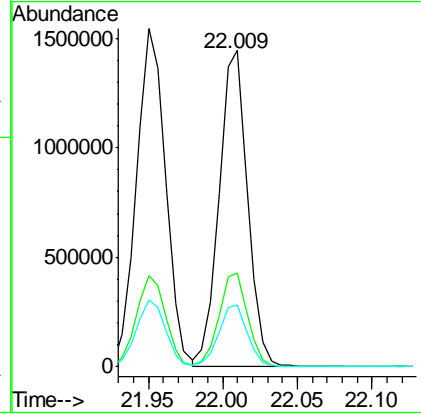
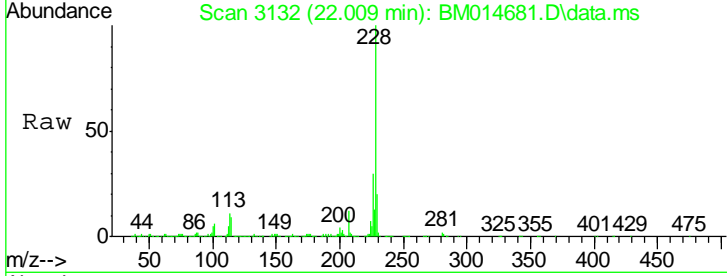




#84  
 Chrysene  
 Concen: 20.65 ng/ul  
 RT: 22.009 min Scan# 31  
 Delta R.T. -0.000 min  
 Lab File: BM014681.D  
 Acq: 06 Apr 2018 14:47

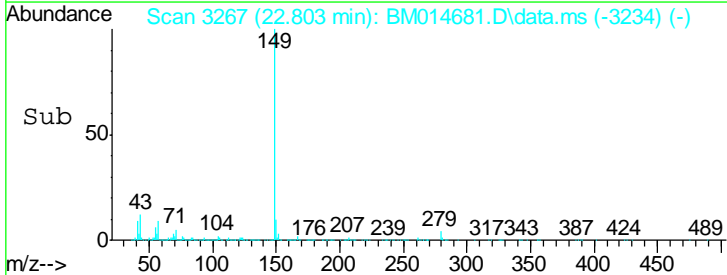
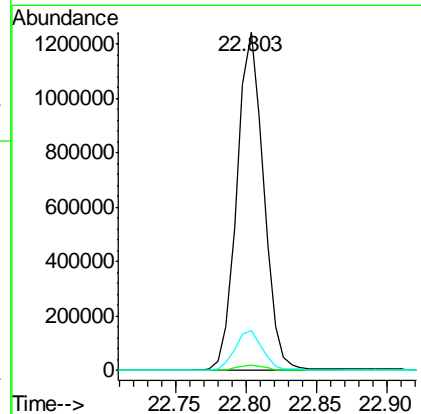
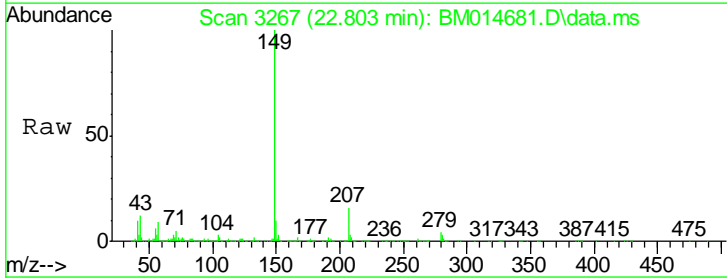
Instrument :  
 BNA\_M  
 ClientSampled :

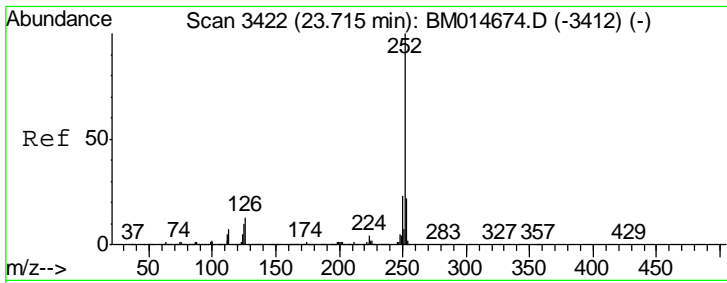
| Tgt Ion | Resp    | Lower | Upper |
|---------|---------|-------|-------|
| 228     | 1930911 |       |       |
| 226     | 29.5    | 24.0  | 36.0  |
| 229     | 19.6    | 15.6  | 23.4  |



#86  
 Di-n-octyl phthalate  
 Concen: 17.42 ng/ul  
 RT: 22.803 min Scan# 3267  
 Delta R.T. -0.006 min  
 Lab File: BM014681.D  
 Acq: 06 Apr 2018 14:47

| Tgt Ion | Resp    | Lower | Upper |
|---------|---------|-------|-------|
| 149     | 1637572 |       |       |
| 167     | 1.5     | 1.2   | 1.8   |
| 43      | 11.8    | 5.6   | 8.4#  |



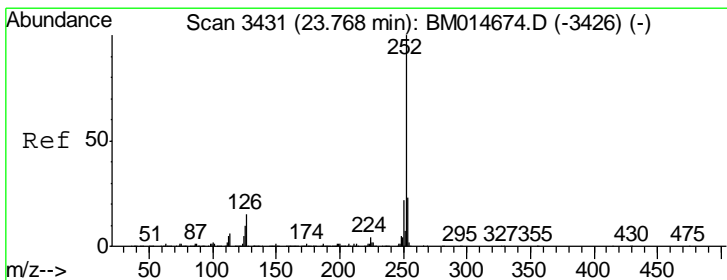
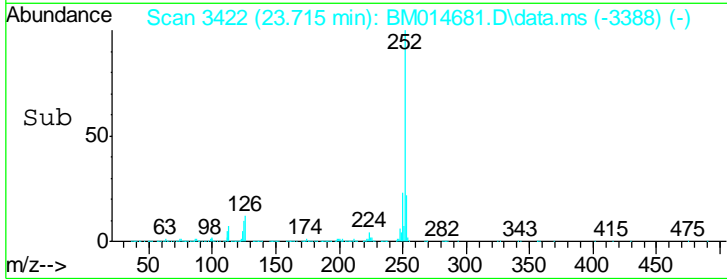
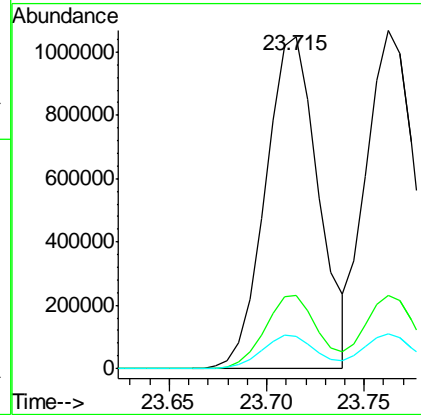
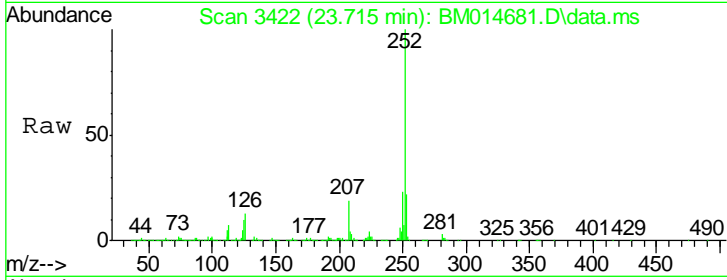


#87  
 Benzo(b)fluoranthene  
 Concen: 20.50 ng/ul  
 RT: 23.715 min Scan# 34  
 Delta R.T. -0.000 min  
 Lab File: BM014681.D  
 Acq: 06 Apr 2018 14:47

Instrument :  
 BNA\_M  
 ClientSampled :

Tgt Ion: 252 Resp: 1971776

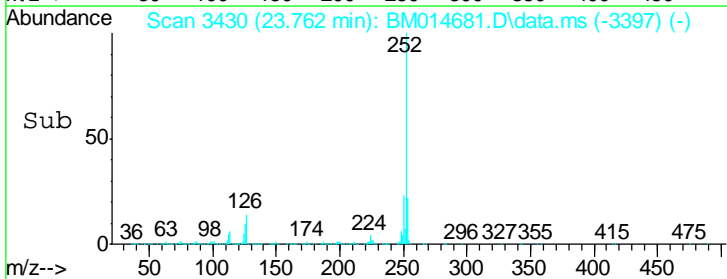
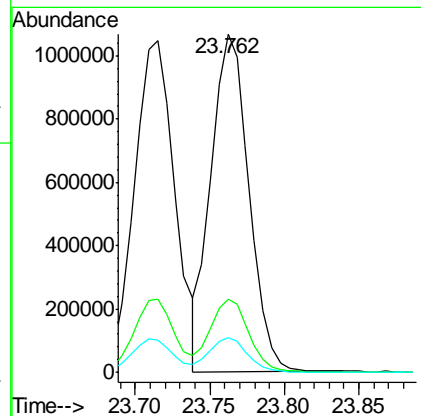
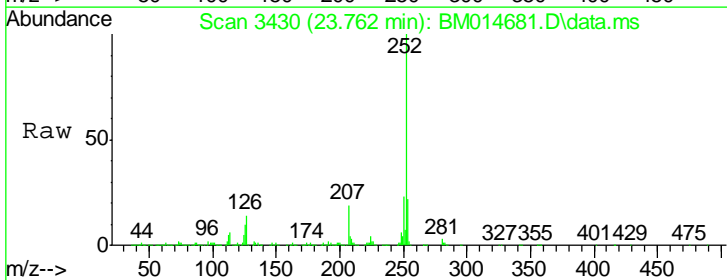
| Ion | Ratio | Lower | Upper |
|-----|-------|-------|-------|
| 252 | 100   |       |       |
| 253 | 22.2  | 17.5  | 26.3  |
| 125 | 9.9   | 8.5   | 12.7  |

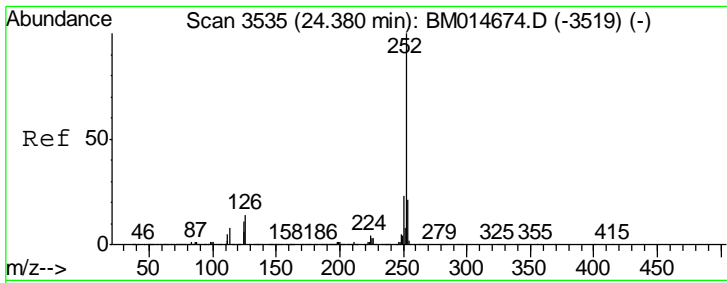


#88  
 Benzo(k)fluoranthene  
 Concen: 20.44 ng/ul  
 RT: 23.762 min Scan# 3430  
 Delta R.T. -0.006 min  
 Lab File: BM014681.D  
 Acq: 06 Apr 2018 14:47

Tgt Ion: 252 Resp: 1892029

| Ion | Ratio | Lower | Upper |
|-----|-------|-------|-------|
| 252 | 100   |       |       |
| 253 | 21.7  | 17.3  | 25.9  |
| 125 | 10.5  | 8.2   | 12.2  |

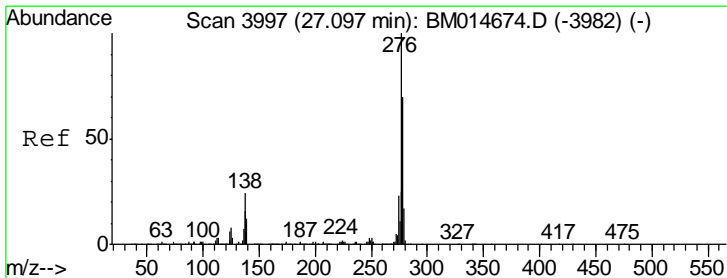
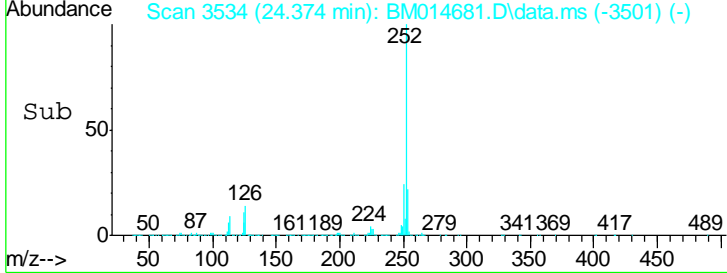
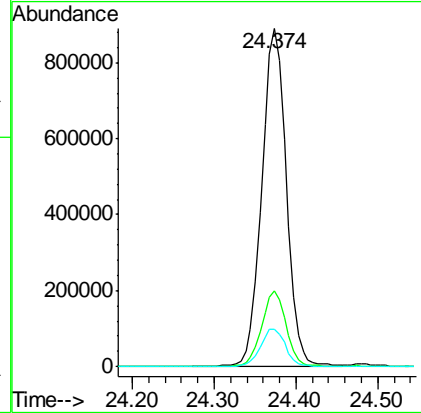
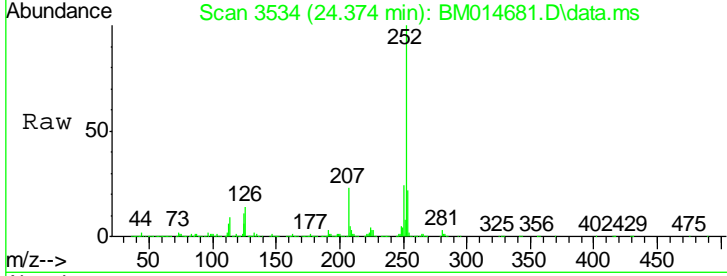




#90  
 Benzo(a)pyrene  
 Concen: 20.63 ng/ul  
 RT: 24.374 min Scan# 35  
 Delta R.T. -0.006 min  
 Lab File: BM014681.D  
 Acq: 06 Apr 2018 14:47

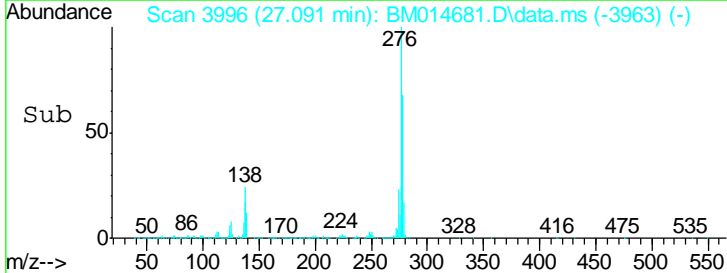
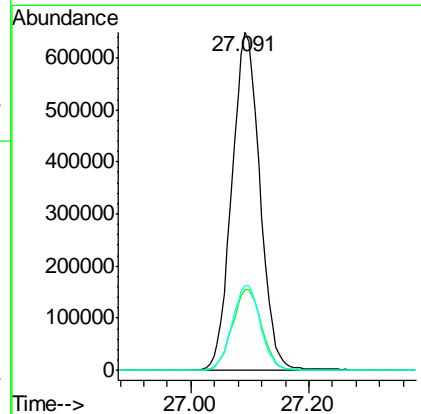
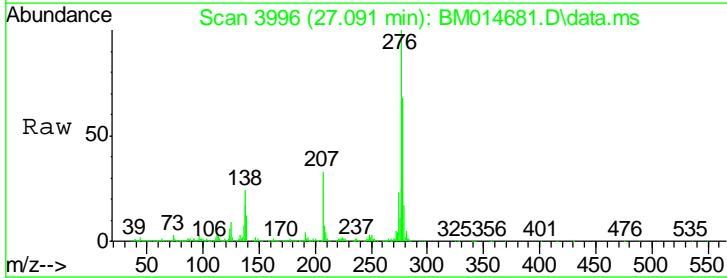
Instrument :  
 BNA\_M  
 ClientSampled :

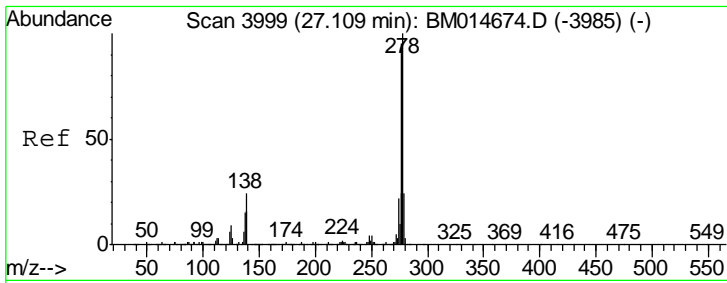
| Tgt Ion | Resp    | Lower | Upper |
|---------|---------|-------|-------|
| 252     | 1857337 |       |       |
| 253     | 22.4    | 17.2  | 25.8  |
| 125     | 11.0    | 9.0   | 13.6  |



#91  
 Indeno(1,2,3-cd)pyrene  
 Concen: 21.32 ng/ul  
 RT: 27.091 min Scan# 3996  
 Delta R.T. -0.006 min  
 Lab File: BM014681.D  
 Acq: 06 Apr 2018 14:47

| Tgt Ion | Resp    | Lower | Upper |
|---------|---------|-------|-------|
| 276     | 2152183 |       |       |
| 138     | 23.9    | 22.3  | 33.5  |
| 277     | 24.9    | 20.2  | 30.2  |

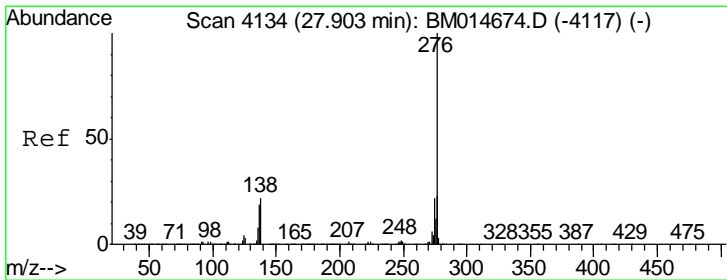
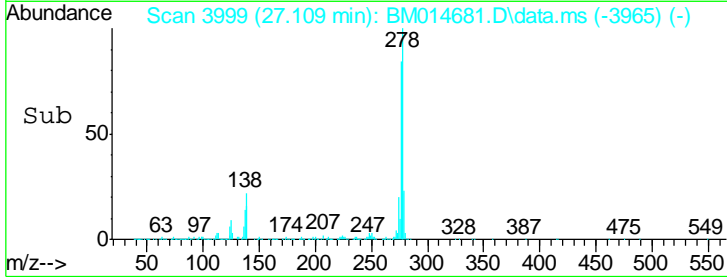
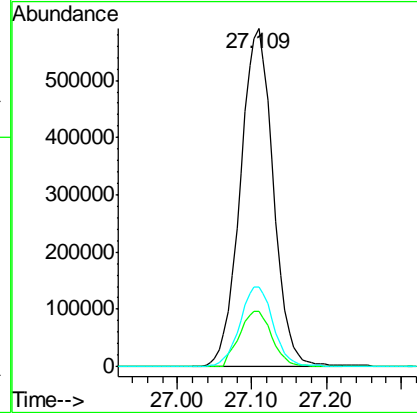
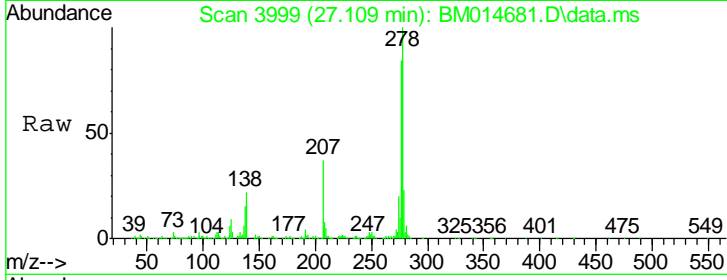




#92  
 Dibenzo(a,h)anthracene  
 Concen: 21.34 ng/ul  
 RT: 27.109 min Scan# 39  
 Delta R.T. -0.000 min  
 Lab File: BM014681.D  
 Acq: 06 Apr 2018 14:47

Instrument :  
 BNA\_M  
 ClientSampled :

| Tgt Ion | Resp    | Lower | Upper |
|---------|---------|-------|-------|
| 278     | 1806382 |       |       |
| 139     | 16.3    | 13.9  | 20.9  |
| 279     | 23.5    | 19.0  | 28.4  |



#93  
 Benzo(g,h,i)perylene  
 Concen: 21.49 ng/ul  
 RT: 27.897 min Scan# 4133  
 Delta R.T. -0.006 min  
 Lab File: BM014681.D  
 Acq: 06 Apr 2018 14:47

| Tgt Ion | Resp    | Lower | Upper |
|---------|---------|-------|-------|
| 276     | 1763564 |       |       |
| 138     | 21.9    | 18.9  | 28.3  |
| 277     | 23.5    | 19.2  | 28.8  |

