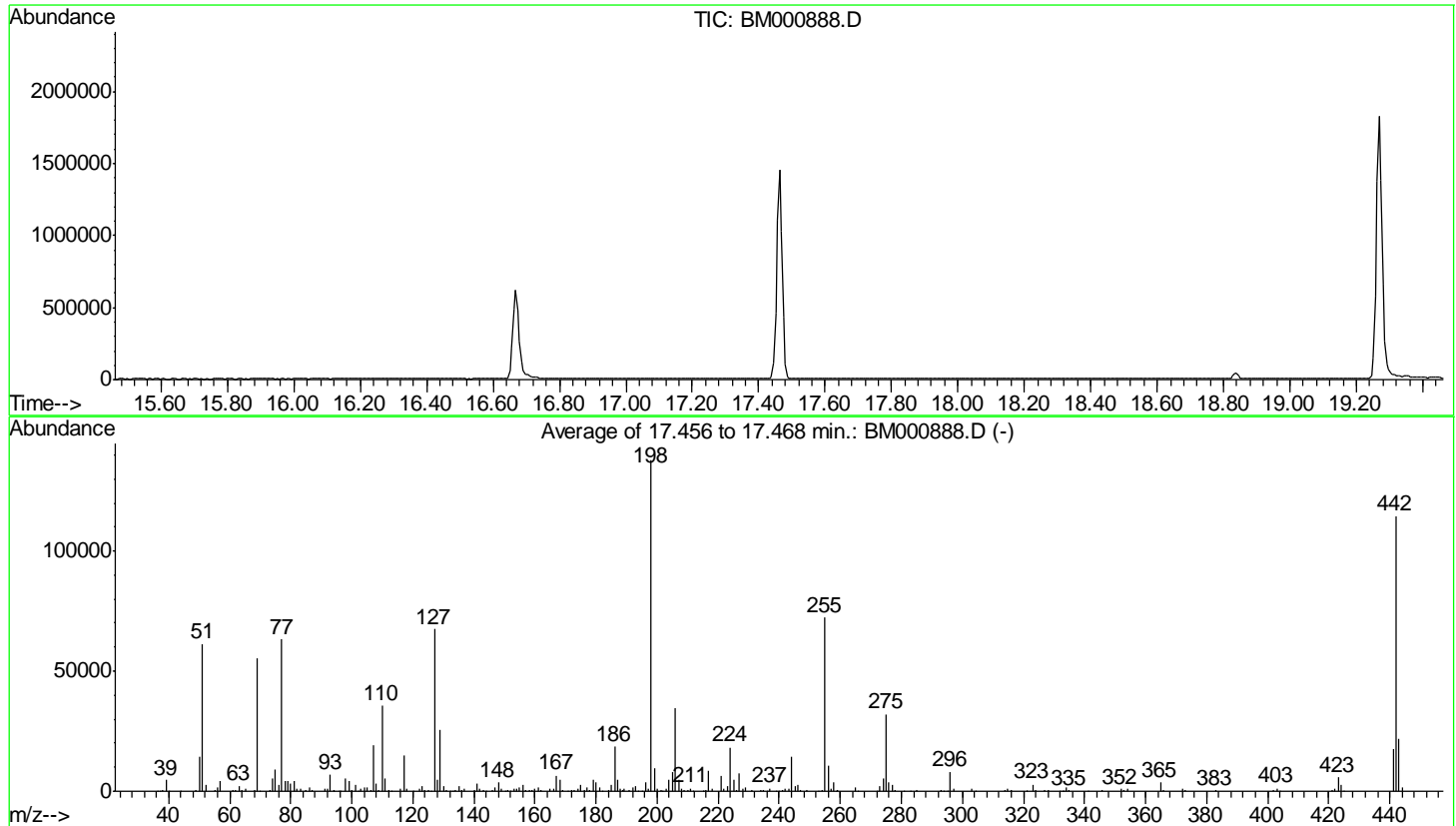


Data Path : Z:\HPCHEM1\BNA M\Data\BM040715\
 Data File : BM000888.D
 Acq On : 07 Apr 2015 20:00
 Operator : TP/IZ
 Sample : DFTPP
 Misc :
 ALS Vial : 1 Sample Multiplier: 1

Instrument :
 BNA_M
 ClientSampleId :
 DFTPP

Integration File: rteint.p

Method : Z:\HPCHEM1\BNA_M\METHODS\SIM-BM040715.M
 Title : ASP BNA STANDARDS FOR 5 POINT CALIBRATION
 Last Update : Tue Apr 07 15:59:39 2015



AutoFind: Scans 2511, 2512, 2513; Background Corrected with Scan 2505

Target Mass	Rel. to Mass	Lower Limit%	Upper Limit%	Rel. Abn%	Raw Abn	Result Pass/Fail
51	198	10	80	44.4	61256	PASS
68	69	0.00	2	1.4	788	PASS
69	198	0.00	100	40.1	55240	PASS
70	69	0.00	2	0.5	269	PASS
127	198	10	80	49.0	67485	PASS
197	198	0.00	2	0.7	943	PASS
198	198	100	100	100.0	137845	PASS
199	198	5	9	6.9	9481	PASS
275	198	10	60	23.3	32104	PASS
365	198	1	100	2.6	3543	PASS
441	442	0.01	24	15.3	17544	PASS
442	198	50	100	83.1	114538	PASS
443	442	15	24	19.3	22103	PASS