

Data Path : Z:\HPCHEM1\BNA M\DATA\BM040717\
 Data File : BM009610.D
 Acq On : 07 Apr 2017 00:59
 Operator : SJ/MA
 Sample : I2525-08
 Misc :
 ALS Vial : 27 Sample Multiplier: 1

Instrument :
 BNA_M
ClientSampleId :
 CB351

Manual Integrations
APPROVED
 mohammad
 4/7/2017 2:10:35 PM

Quant Time: Apr 07 03:55:16 2017
 Quant Method : Z:\HPCHEM1\BNA M\METHODS\SOM-EPA-BM040417-PAH.M
 Quant Title : SVOA CALIBRATION
 QLast Update : Fri Apr 07 03:19:28 2017
 Response via : Initial Calibration

Internal Standards	R.T.	QIon	Response	Conc	Units	Dev(Min)
1) 1,4-Dichlorobenzene-d4	7.84	152	167311	20.00	ng/ul	0.00
2) Naphthalene-d8	10.63	136	660183	20.00	ng/ul	0.00
6) Acenaphthene-d10	14.49	164	379530	20.00	ng/ul	0.00
12) Phenanthrene-d10	17.23	188	887053	20.00	ng/ul	0.00
18) Chrysene-d12	21.42	240	1174320	20.00	ng/ul	0.00
23) Perylene-d12	23.74	264	1108974	20.00	ng/ul	0.00
System Monitoring Compounds						
3) 2,4-Dichlorophenol-d3	10.25	165	281390	27.72	ng/uL	0.00
7) Acenaphthylene-d8	14.18	160	1106130	29.74	ng/ul	0.00
10) Fluorene-d10	15.48	176	776075	29.01	ng/ul	0.00
15) Anthracene-d10	17.33	188	1224194	28.85	ng/ul	0.00
19) Pyrene-d10	19.63	212	1503754	31.16	ng/ul	0.00
26) Benzo(a)pyrene-d12	23.59	264	1511127	30.86	ng/ul	0.00
Target Compounds						
8) Acenaphthylene	14.20	152	62266	1.67	ng/ul	98
14) Phenanthrene	17.28	178	323901	6.49	ng/ul	97
16) Anthracene	17.37	178	85908m	1.67	ng/ul	
17) Fluoranthene	19.29	202	647370	10.42	ng/ul	98
20) Pyrene	19.66	202	667800	10.44	ng/ul	95
21) Benzo(a)anthracene	21.40	228	407337	6.14	ng/ul	99
22) Chrysene	21.45	228	435905	7.16	ng/ul	98
24) Benzo(b)fluoranthene	23.04	252	642133	9.36	ng/ul#	83
25) Benzo(k)fluoranthene	23.08	252	194552m	2.98	ng/ul	
27) Benzo(a)pyrene	23.64	252	416321	6.38	ng/ul	98
28) Indeno(1,2,3-cd)pyrene	26.10	276	323825	4.43	ng/ul#	94
29) Dibenzo(a,h)anthracene	26.10	278	85931	1.38	ng/ul#	92
30) Benzo(a,h,i)perylene	26.83	276	314454	5.22	ng/ul#	89

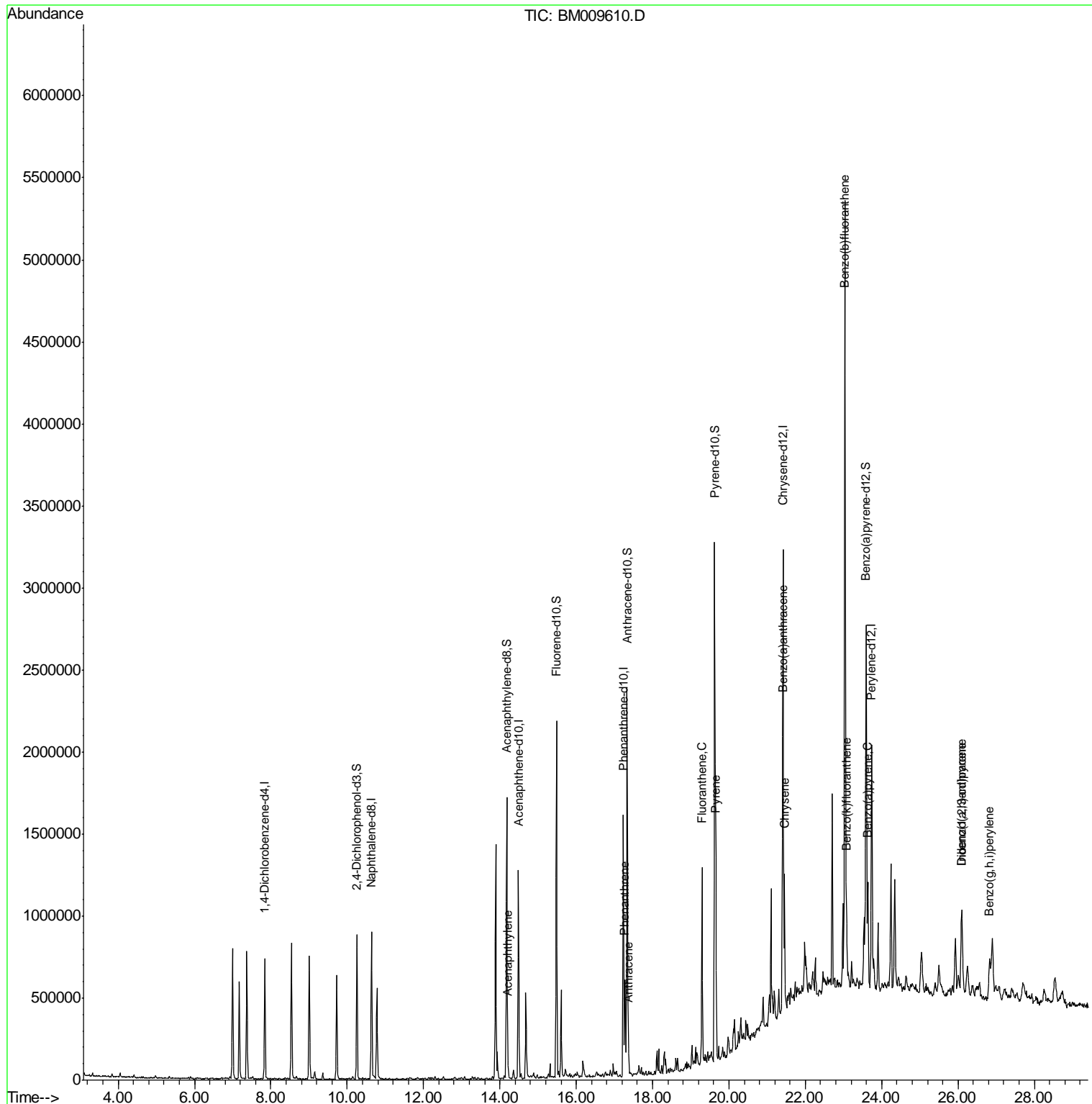
(#) = qualifier out of range (m) = manual integration (+) = signals summed

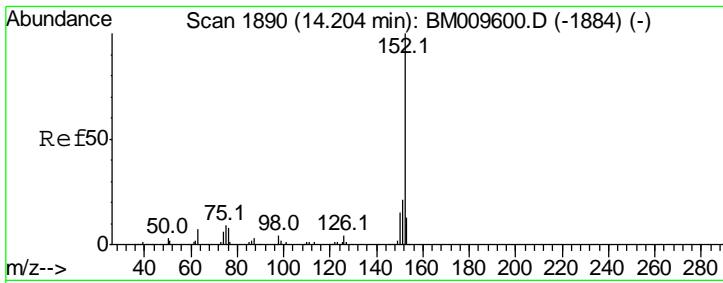
Data Path : Z:\HPCHEM1\BNA M\DATA\BM040717\
 Data File : BM009610.D
 Acq On : 07 Apr 2017 00:59
 Operator : SJ/MA
 Sample : I2525-08
 Misc :
 ALS Vial : 27 Sample Multiplier: 1

Instrument :
 BNA_M
 ClientSampled :
 CB351

Manual Integrations
APPROVED
 mohammad
 4/7/2017 2:10:35 PM

Quant Time: Apr 07 03:55:16 2017
 Quant Method : Z:\HPCHEM1\BNA M\METHODS\SOM-EPA-BM040417-PAH.M
 Quant Title : SVOA CALIBRATION
 QLast Update : Fri Apr 07 03:19:28 2017
 Response via : Initial Calibration





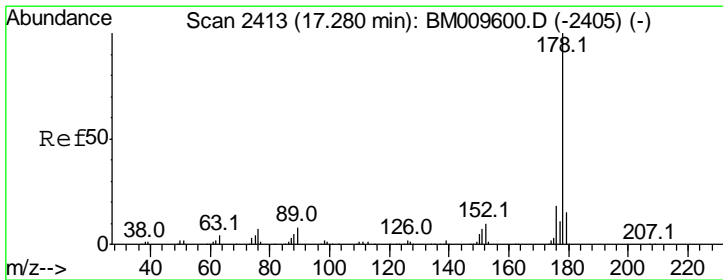
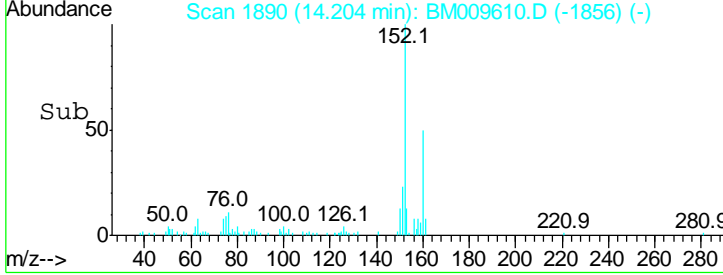
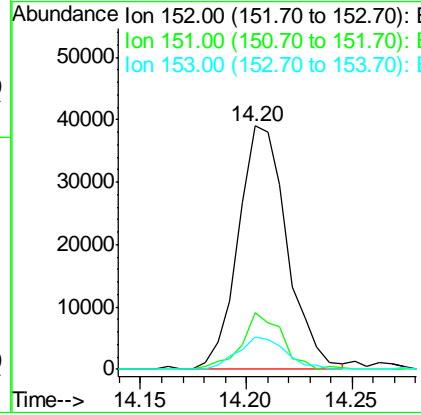
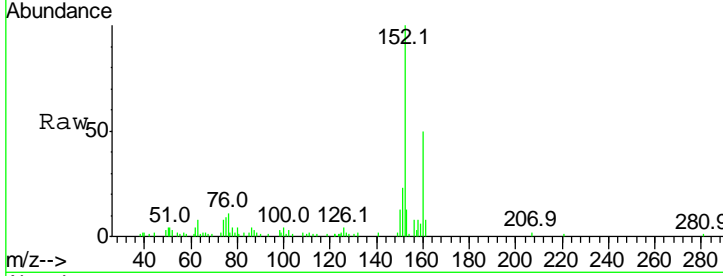
#8
 Acenaphthylene
 Concen: 1.67 ng/ul
 RT: 14.20 min Scan# 1890
 Delta R.T. 0.00 min
 Lab File: BM009610.D
 Acq: 07 Apr 2017 00:59

Instrument :
 BNA_M
ClientSampled :
 CB351

Tgt Ion	Resp	Lower	Upper
152	100		
151	23.1	17.5	26.3
153	13.3	10.6	16.0

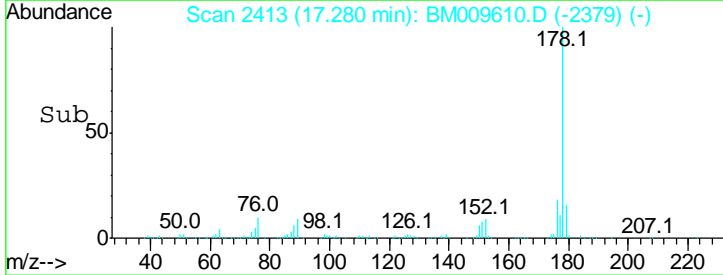
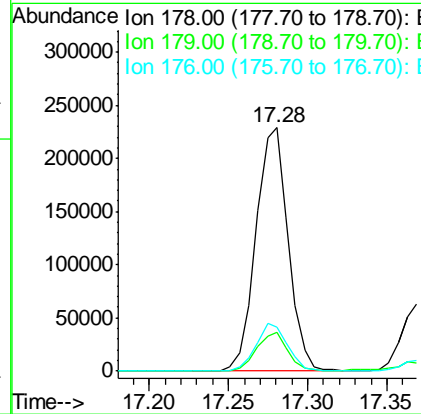
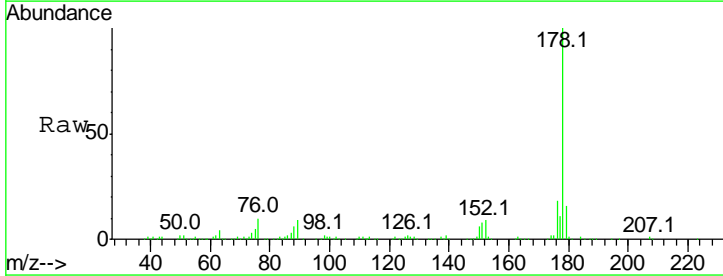
Manual Integrations
APPROVED

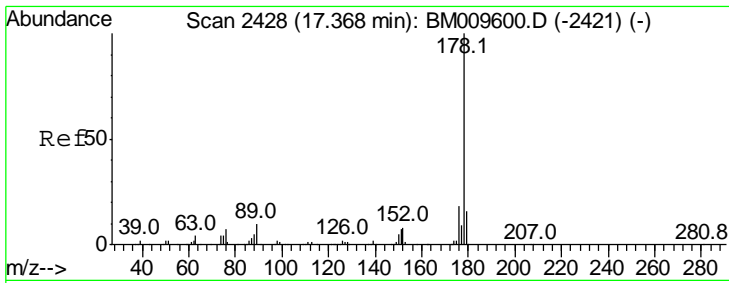
mohammad
 4/7/2017 2:10:35 PM



#14
 Phenanthrene
 Concen: 6.49 ng/ul
 RT: 17.28 min Scan# 2413
 Delta R.T. 0.00 min
 Lab File: BM009610.D
 Acq: 07 Apr 2017 00:59

Tgt Ion	Resp	Lower	Upper
178	100		
179	15.9	12.2	18.4
176	18.3	16.4	24.6





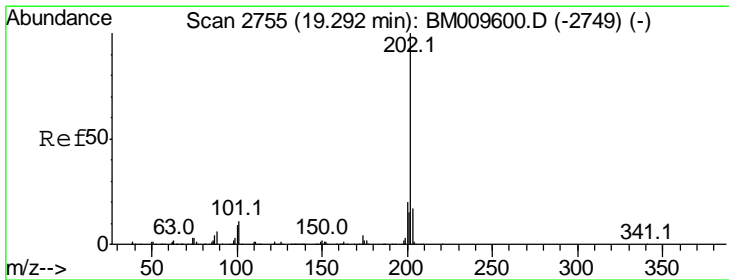
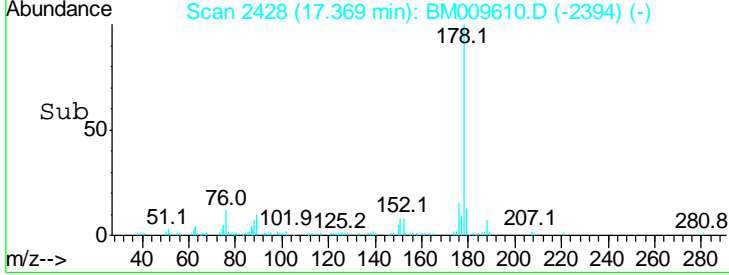
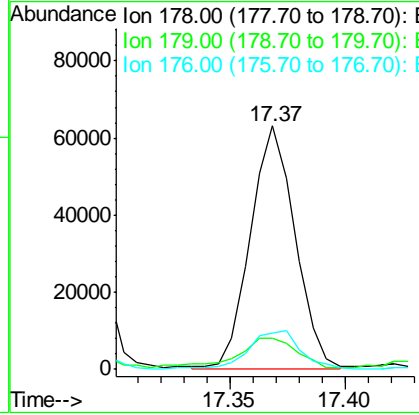
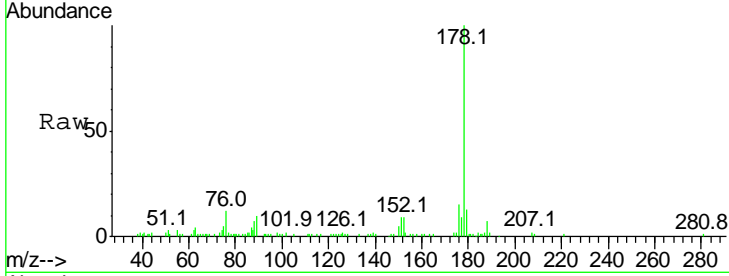
#16
 Anthracene
 Concen: 1.67 ng/ul m
 RT: 17.37 min Scan# 2428
 Delta R.T. 0.00 min
 Lab File: BM009610.D
 Acq: 07 Apr 2017 00:59

Instrument :
 BNA_M
 ClientSampled :
 CB351

Tgt Ion	Resp	Lower	Upper
178	100		
179	12.6	12.7	19.1#
176	15.1	15.8	23.8#

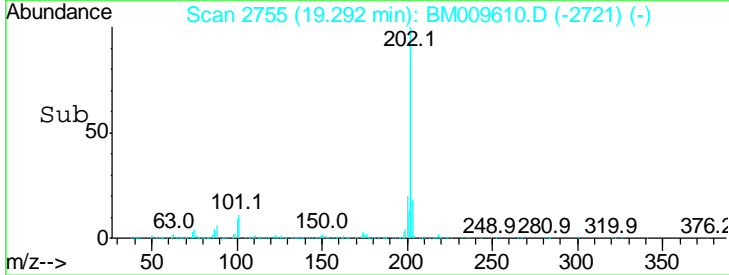
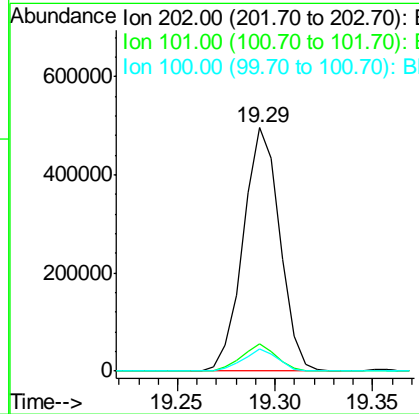
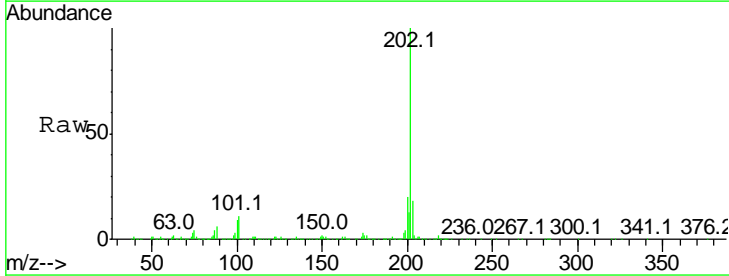
Manual Integrations
 APPROVED

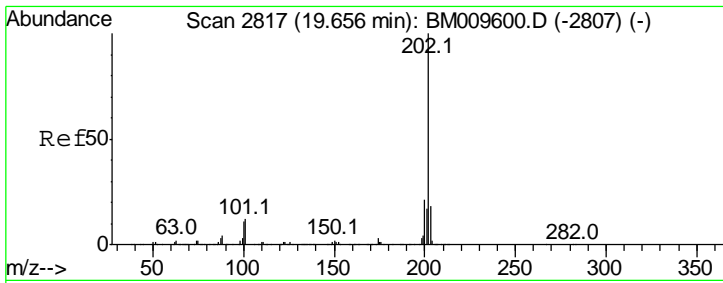
mohammad
 4/7/2017 2:10:35 PM



#17
 Fluoranthene
 Concen: 10.42 ng/ul
 RT: 19.29 min Scan# 2755
 Delta R.T. 0.00 min
 Lab File: BM009610.D
 Acq: 07 Apr 2017 00:59

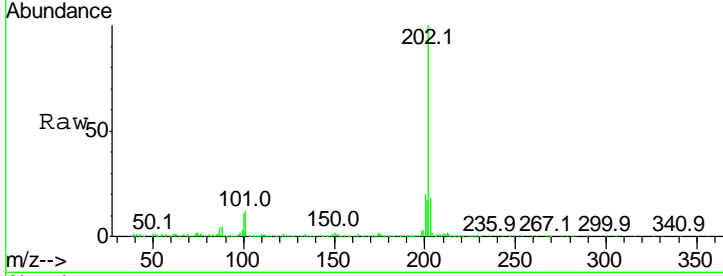
Tgt Ion	Resp	Lower	Upper
202	100		
101	11.3	9.8	14.8
100	9.1	7.5	11.3





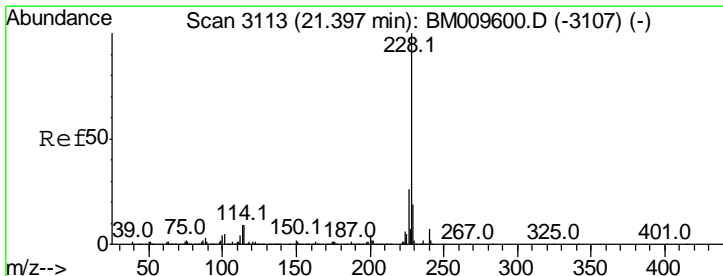
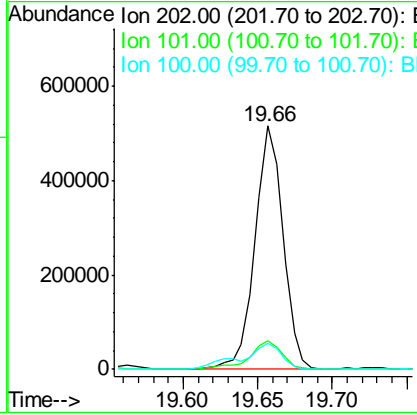
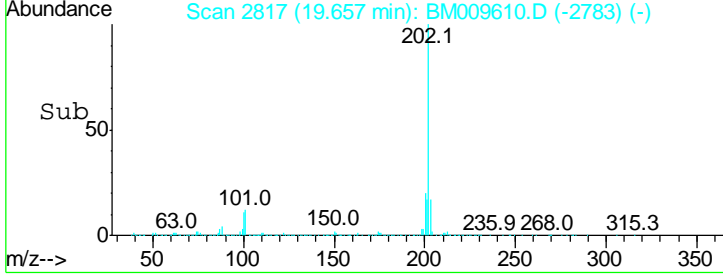
#20
 Pyrene
 Concen: 10.44 ng/ul
 RT: 19.66 min Scan# 2817
 Delta R.T. 0.00 min
 Lab File: BM009610.D
 Acq: 07 Apr 2017 00:59

Instrument :
 BNA_M
 ClientSampled :
 CB351

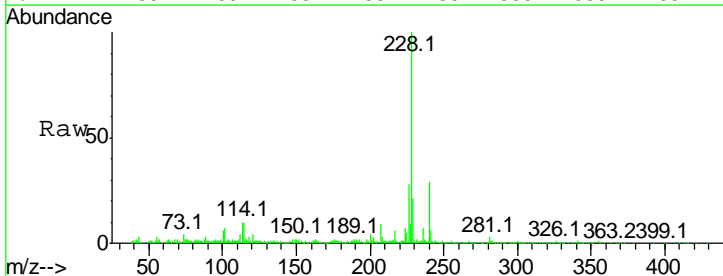


Tgt Ion	Resp	Lower	Upper
202	100		
101	11.8	11.2	16.8
100	10.8	9.8	14.6

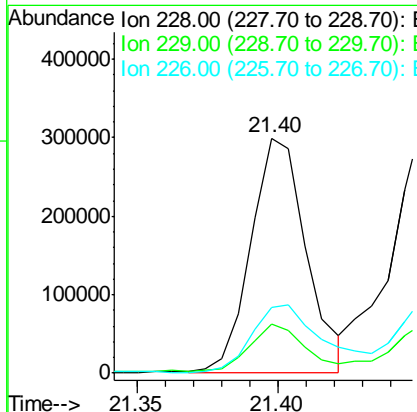
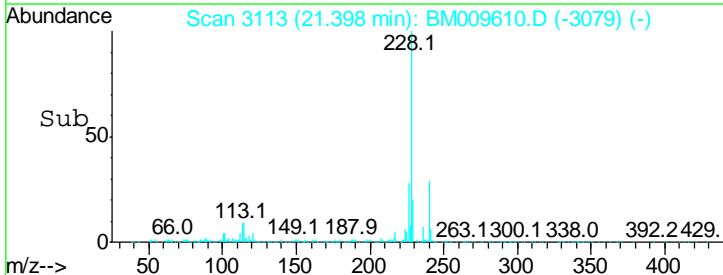
Manual Integrations
APPROVED
 mohammad
 4/7/2017 2:10:35 PM

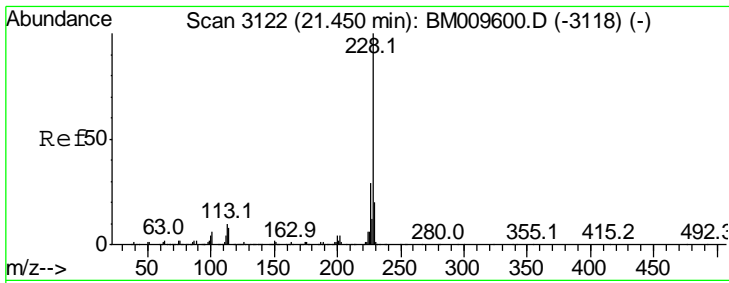


#21
 Benzo(a)anthracene
 Concen: 6.14 ng/ul
 RT: 21.40 min Scan# 3113
 Delta R.T. 0.00 min
 Lab File: BM009610.D
 Acq: 07 Apr 2017 00:59



Tgt Ion	Resp	Lower	Upper
228	100		
229	20.7	15.9	23.9
226	28.2	22.1	33.1





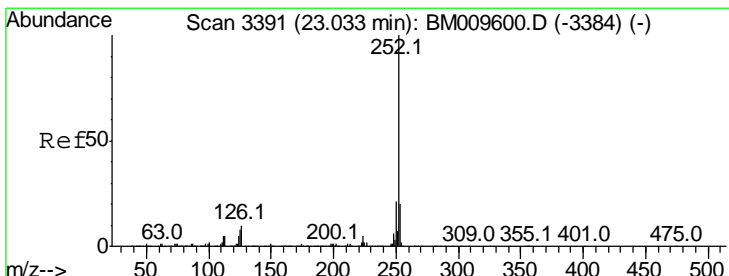
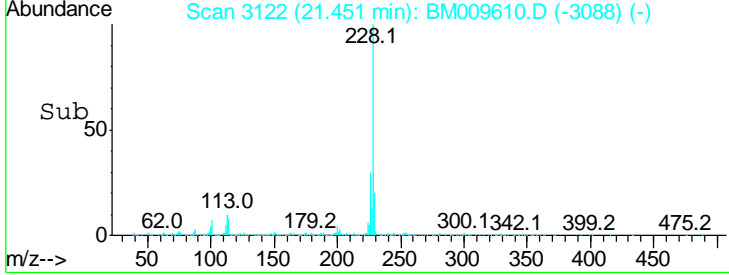
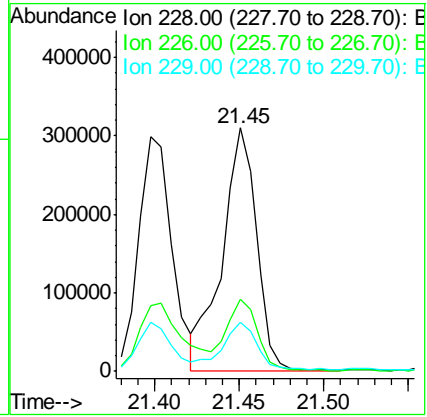
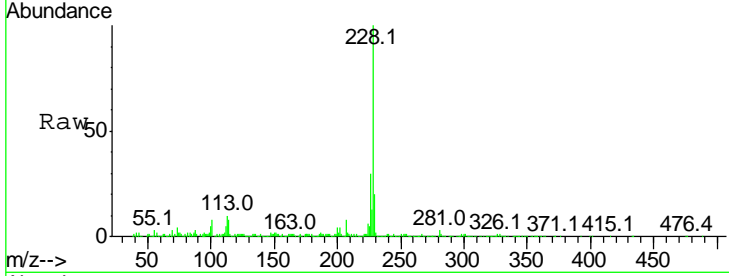
#22
 Chrysene
 Concen: 7.16 ng/ul
 RT: 21.45 min Scan# 3122
 Delta R.T. 0.00 min
 Lab File: BM009610.D
 Acq: 07 Apr 2017 00:59

Instrument :
 BNA_M
 ClientSampled :
 CB351

Tgt Ion	Resp	Lower	Upper
228	100		
226	29.9	25.0	37.6
229	20.2	16.6	25.0

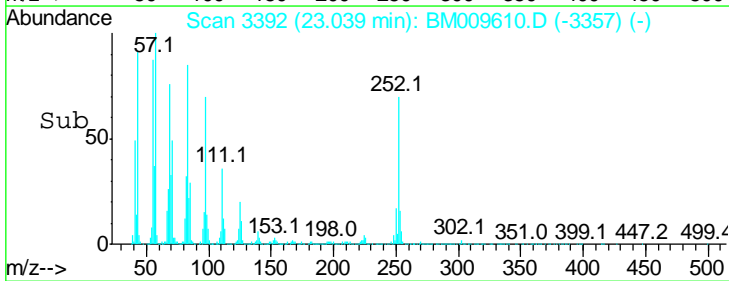
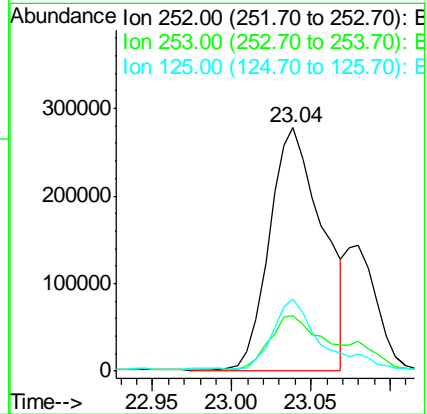
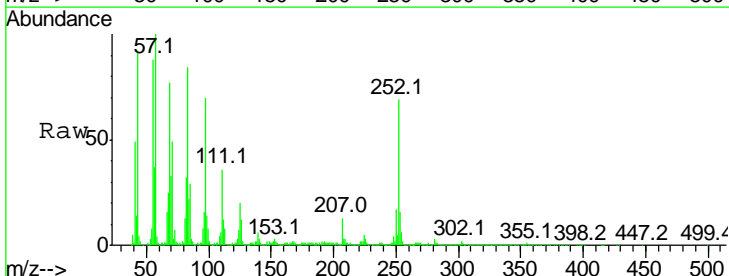
Manual Integrations
 APPROVED

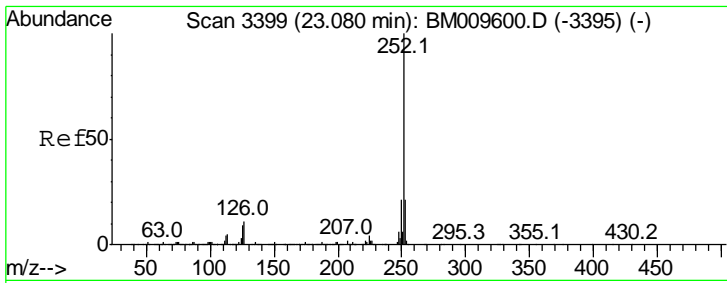
mohammad
 4/7/2017 2:10:35 PM



#24
 Benzo(b)fluoranthene
 Concen: 9.36 ng/ul
 RT: 23.04 min Scan# 3392
 Delta R.T. 0.01 min
 Lab File: BM009610.D
 Acq: 07 Apr 2017 00:59

Tgt Ion	Resp	Lower	Upper
252	100		
253	22.8	17.8	26.6
125	29.4	9.4	14.0#





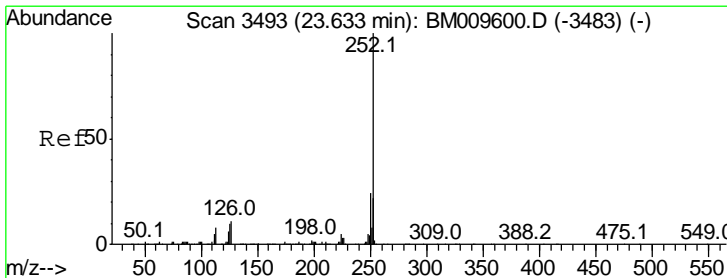
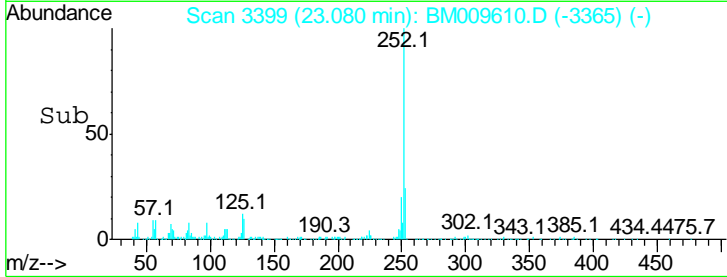
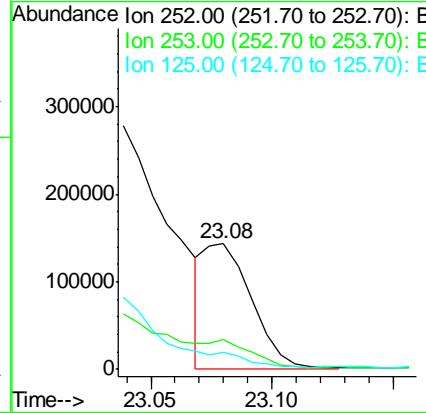
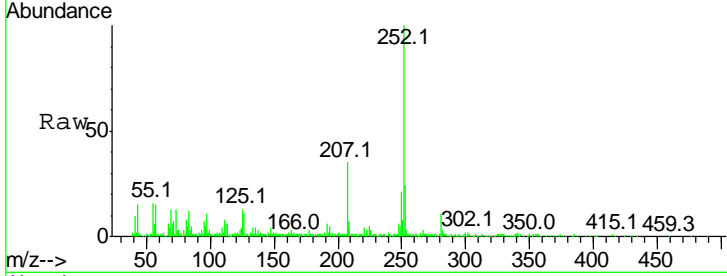
#25
 Benzo(k)fluoranthene
 Concen: 2.98 ng/ul m
 RT: 23.08 min Scan# 3399
 Delta R.T. 0.00 min
 Lab File: BM009610.D
 Acq: 07 Apr 2017 00:59

Instrument :
 BNA_M
 ClientSampled :
 CB351

Tgt Ion	Ratio	Lower	Upper
252	100		
253	24.2	17.4	26.2
125	13.3	8.8	13.2

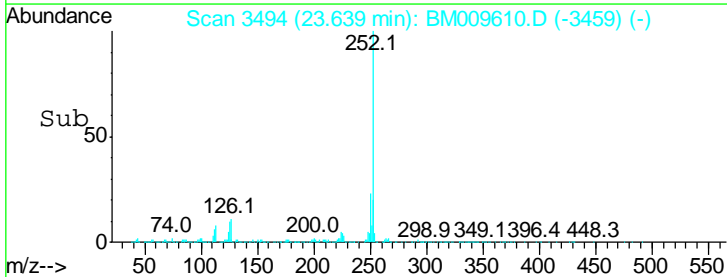
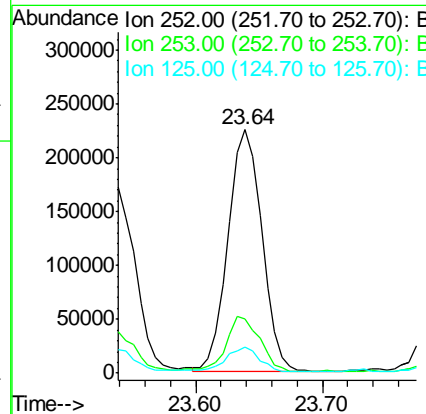
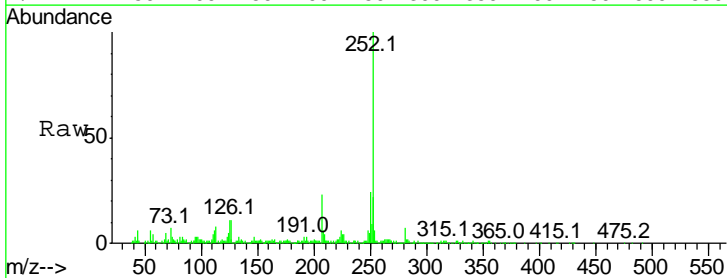
Manual Integrations
 APPROVED

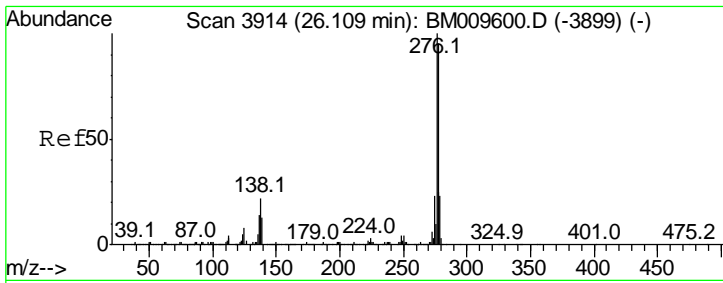
mohammad
 4/7/2017 2:10:35 PM



#27
 Benzo(a)pyrene
 Concen: 6.38 ng/ul
 RT: 23.64 min Scan# 3494
 Delta R.T. 0.01 min
 Lab File: BM009610.D
 Acq: 07 Apr 2017 00:59

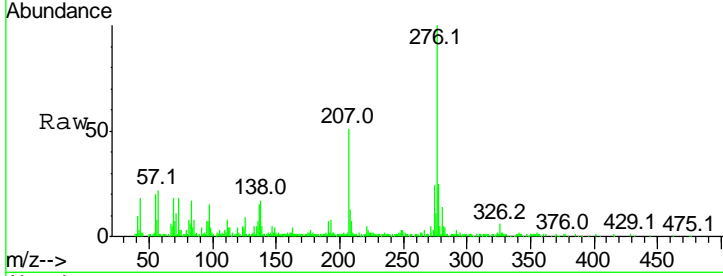
Tgt Ion	Ratio	Lower	Upper
252	100		
253	22.0	17.1	25.7
125	10.7	9.4	14.2





#28
 Indeno(1,2,3-cd)pyrene
 Concen: 4.43 ng/ul
 RT: 26.10 min Scan# 3913
 Delta R.T. -0.01 min
 Lab File: BM009610.D
 Acq: 07 Apr 2017 00:59

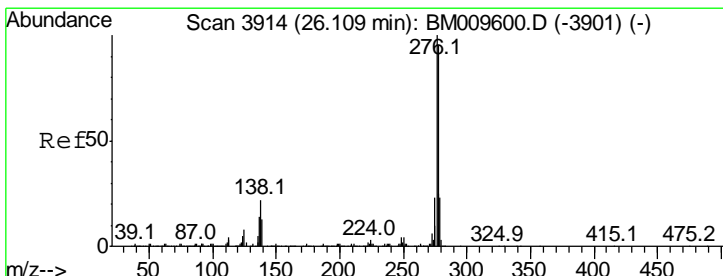
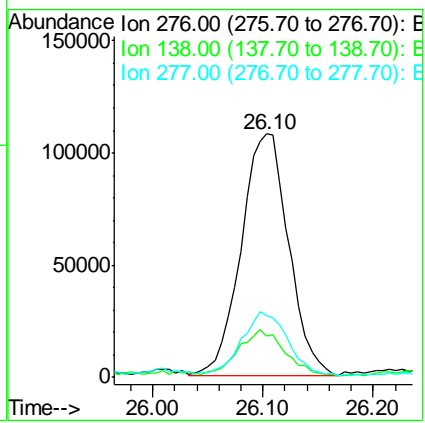
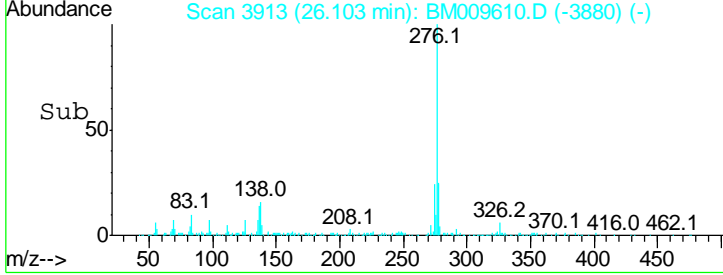
Instrument :
 BNA_M
ClientSampled :
 CB351



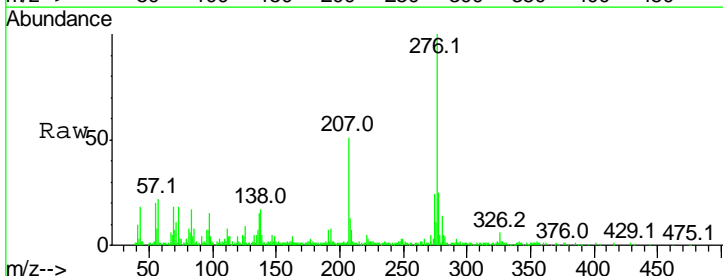
Tgt Ion: 276 Resp: 323825

Ion	Ratio	Lower	Upper
276	100		
138	17.1	17.8	26.6#
277	25.4	19.4	29.0

Manual Integrations
APPROVED
 mohammad
 4/7/2017 2:10:35 PM

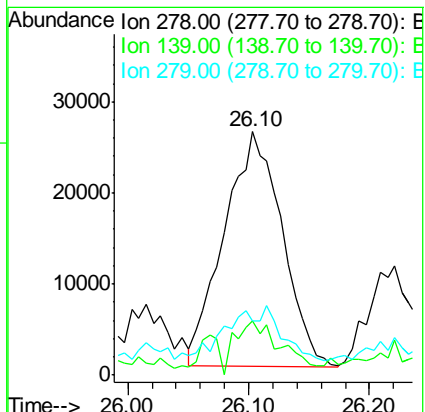
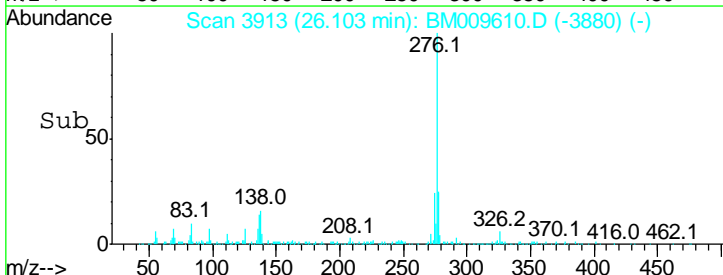


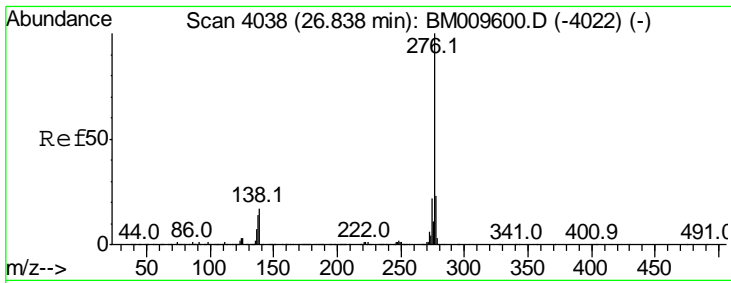
#29
 Dibenzo(a,h)anthracene
 Concen: 1.38 ng/ul
 RT: 26.10 min Scan# 3913
 Delta R.T. -0.01 min
 Lab File: BM009610.D
 Acq: 07 Apr 2017 00:59



Tgt Ion: 278 Resp: 85931

Ion	Ratio	Lower	Upper
278	100		
139	22.1	14.0	21.0#
279	22.3	20.6	31.0





#30
 Benzo(a,h,i)perylene
 Concen: 5.22 ng/ul
 RT: 26.83 min Scan# 4036
 Delta R.T. -0.01 min
 Lab File: BM009610.D
 Acq: 07 Apr 2017 00:59

Instrument :
 BNA_M
ClientSampled :
 CB351

Tot Ion: 276 Resp: 314454
 Ion Ratio Lower Upper
 276 100
 138 17.1 19.0 28.4#
 277 20.0 19.7 29.5

Manual Integrations
APPROVED
 mohammad
 4/7/2017 2:10:35 PM

