

Data Path : Z:\SVOASRV\HPCHEM1\BNA M\DATA\BM040721\
 Data File : BM029394.D
 Acq On : 08 Apr 2021 05:19
 Operator : CG/JU
 Sample : M1957-11
 Misc : GCMS CONFIRMATION
 ALS Vial : 33 Sample Multiplier: 1

Instrument :
 BNA_M
 ClientSampleId :
 C0B18

Integration Parameters: LSCINT.P

Integrator: RTE
 Smoothing : OFF
 Sampling : 1
 Start Thrs: 0.2
 Stop Thrs : 0

Filtering: 5
 Min Area: 0.1 % of largest Peak
 Max Peaks: 100
 Peak Location: TOP

If leading or trailing edge < 100 prefer < Baseline drop else tangent >
 Peak separation: 5

Method : Z:\SVOASRV\HPCHEM1\BNA_M\METHODS\SOM-EPA-BM040721MA.M
 Title : SVOA CALIBRATION

Signal : TIC

peak #	R.T. min	first scan	max scan	last scan	PK TY	peak height	corr. area	corr. % max.	% of total
1	2.952	8	11	17	rVB	126012	136185	5.80%	1.202%
2	3.028	21	24	27	rVV	40561	39718	1.69%	0.350%
3	3.058	27	29	31	rVV	18488	17786	0.76%	0.157%
4	3.081	31	33	35	rVV	24224	21794	0.93%	0.192%
5	3.117	35	39	44	rVB	2337224	2348303	100.00%	20.723%
6	3.287	66	68	73	rVB4	2277	2742	0.12%	0.024%
7	3.422	86	91	92	rBV5	5978	7807	0.33%	0.069%
8	3.452	92	96	100	rVB	69287	78808	3.36%	0.695%
9	3.546	108	112	116	rVB3	4739	7488	0.32%	0.066%
10	3.828	156	160	162	rBV4	2536	3104	0.13%	0.027%
11	3.916	170	175	182	rVB	18129	22388	0.95%	0.198%
12	4.099	202	206	209	rBV6	2354	2778	0.12%	0.025%
13	4.263	230	234	237	rVB5	2586	4064	0.17%	0.036%
14	4.363	248	251	256	rVB4	2334	3120	0.13%	0.028%
15	4.458	263	267	270	rBV4	2312	3131	0.13%	0.028%
16	4.752	313	317	322	rVB4	1729	2545	0.11%	0.022%
17	5.222	393	397	402	rVB	6997	9398	0.40%	0.083%
18	5.352	413	419	428	rBV	20648	41475	1.77%	0.366%
19	5.510	443	446	450	rVB5	1721	2397	0.10%	0.021%
20	5.716	474	481	487	rBV3	13275	22050	0.94%	0.195%
21	6.199	559	563	565	rBV3	1644	2406	0.10%	0.021%
22	6.687	642	646	650	rBV5	2014	3234	0.14%	0.029%
23	6.787	659	663	667	rVB2	8908	12133	0.52%	0.107%
24	6.846	667	673	680	rVV3	6631	10069	0.43%	0.089%
25	6.916	680	685	692	rVB3	4386	8176	0.35%	0.072%
26	7.087	710	714	717	rBV3	3149	4838	0.21%	0.043%
27	7.340	749	757	764	rBV3	12054	23080	0.98%	0.204%
28	7.687	809	816	831	rBV	548216	850934	36.24%	7.509%
29	7.804	833	836	843	rVB4	3197	6213	0.26%	0.055%
30	8.234	904	909	910	rBV5	2439	2854	0.12%	0.025%
31	8.334	920	926	930	rBV5	3020	5737	0.24%	0.051%
32	8.787	999	1003	1011	rBV4	1964	4215	0.18%	0.037%
33	8.922	1022	1026	1034	rVB3	4500	7394	0.31%	0.065%
34	10.469	1280	1289	1296	rBV	672603	1136603	48.40%	10.030%

Data Path : Z:\SVOASRV\HPCHEM1\BNA M\DATA\BM040721\
 Data File : BM029394.D
 Acq On : 08 Apr 2021 05:19
 Operator : CG/JU
 Sample : M1957-11
 Misc : GCMS CONFIRMATION
 ALS Vial : 33 Sample Multiplier: 1

Instrument :
 BNA_M
 ClientSampleId :
 C0B18

Integration Parameters: LSCINT.P

Integrator: RTE
 Smoothing : OFF
 Sampling : 1
 Start Thrs: 0.2
 Stop Thrs : 0

Filtering: 5
 Min Area: 0.1 % of largest Peak
 Max Peaks: 100
 Peak Location: TOP

If leading or trailing edge < 100 prefer < Baseline drop else tangent >
 Peak separation: 5

Method : Z:\SVOASRV\HPCHEM1\BNA_M\METHODS\SOM-EPA-BM040721MA.M
 Title : SVOA CALIBRATION

35	10.645	1315	1319	1326	rVB6	2369	4470	0.19%	0.039%
36	11.157	1402	1406	1411	rVB4	1815	2836	0.12%	0.025%
37	11.510	1462	1466	1471	rBV5	2359	5466	0.23%	0.048%
38	11.557	1471	1474	1482	rVB4	3086	5272	0.22%	0.047%
39	11.663	1487	1492	1497	rBV3	1725	2836	0.12%	0.025%
40	11.910	1530	1534	1537	rBV2	3218	4533	0.19%	0.040%
41	12.134	1569	1572	1581	rVB5	4934	10195	0.43%	0.090%
42	12.216	1581	1586	1590	rBV6	4005	6762	0.29%	0.060%
43	12.304	1596	1601	1604	rBV5	1329	2680	0.11%	0.024%
44	12.351	1607	1609	1610	rBV2	3228	2597	0.11%	0.023%
45	12.410	1615	1619	1623	rVB5	1789	3009	0.13%	0.027%
46	12.622	1652	1655	1656	rBV3	3167	2488	0.11%	0.022%
47	12.681	1660	1665	1667	rBV5	3163	5115	0.22%	0.045%
48	12.763	1675	1679	1685	rVB8	8471	13408	0.57%	0.118%
49	12.822	1685	1689	1691	rBV5	4136	5737	0.24%	0.051%
50	12.922	1703	1706	1712	rVB6	4812	9012	0.38%	0.080%
51	13.028	1720	1724	1726	rBV5	1488	2505	0.11%	0.022%
52	13.110	1732	1738	1744	rBV8	10493	21411	0.91%	0.189%
53	13.157	1744	1746	1750	rVB4	6265	7924	0.34%	0.070%
54	13.216	1752	1756	1759	rBV6	4669	6119	0.26%	0.054%
55	13.245	1759	1761	1762	rBV2	3890	3378	0.14%	0.030%
56	13.339	1774	1777	1781	rVB6	3505	5872	0.25%	0.052%
57	13.598	1816	1821	1825	rBV8	6105	11527	0.49%	0.102%
58	13.651	1825	1830	1833	rBV7	9607	13712	0.58%	0.121%
59	13.751	1842	1847	1851	rBV2	46671	65735	2.80%	0.580%
60	13.816	1855	1858	1861	rVV5	7621	11220	0.48%	0.099%
61	13.869	1863	1867	1872	rVB8	13065	20911	0.89%	0.185%
62	14.075	1896	1902	1906	rBV7	19691	44282	1.89%	0.391%
63	14.157	1912	1916	1923	rVB3	44729	64922	2.76%	0.573%
64	14.233	1925	1929	1934	rBV5	17069	28559	1.22%	0.252%
65	14.322	1935	1944	1954	rBV	1012697	1498101	63.80%	13.220%
66	14.551	1981	1983	1987	rVB5	6835	5867	0.25%	0.052%
67	14.651	1997	2000	2005	rBV7	7540	14598	0.62%	0.129%
68	14.863	2032	2036	2042	rVB8	9883	20233	0.86%	0.179%
69	14.957	2049	2052	2054	rBV4	12406	14985	0.64%	0.132%
70	14.986	2055	2057	2061	rVB5	16923	20881	0.89%	0.184%
71	15.045	2063	2067	2074	rBV9	17023	28531	1.21%	0.252%

Data Path : Z:\SVOASRV\HPCHEM1\BNA M\DATA\BM040721\
 Data File : BM029394.D
 Acq On : 08 Apr 2021 05:19
 Operator : CG/JU
 Sample : M1957-11
 Misc : GCMS CONFIRMATION
 ALS Vial : 33 Sample Multiplier: 1

Instrument :
 BNA_M
 ClientSampleId :
 C0B18

Integration Parameters: LSCINT.P
 Integrator: RTE
 Smoothing : OFF Filtering: 5
 Sampling : 1 Min Area: 0.1 % of largest Peak
 Start Thrs: 0.2 Max Peaks: 100
 Stop Thrs : 0 Peak Location: TOP

If leading or trailing edge < 100 prefer < Baseline drop else tangent >
 Peak separation: 5

Method : Z:\SVOASRV\HPCHEM1\BNA_M\METHODS\SOM-EPA-BM040721MA.M
 Title : SVOA CALIBRATION

72	15.116	2075	2079	2086	rBV3	31813	51453	2.19%	0.454%
73	15.186	2088	2091	2094	rBV3	15426	22893	0.97%	0.202%
74	15.486	2140	2142	2147	rBV5	9514	13651	0.58%	0.120%
75	16.051	2234	2238	2240	rBV3	30730	42745	1.82%	0.377%
76	17.063	2404	2410	2415	rBV	1092893	1551639	66.07%	13.692%
77	19.121	2757	2760	2764	rVB	75079	84531	3.60%	0.746%
78	19.480	2819	2821	2827	rVB3	37452	44877	1.91%	0.396%
79	19.974	2902	2905	2909	rVB3	98553	118066	5.03%	1.042%
80	20.257	2949	2953	2958	rBV4	96465	112468	4.79%	0.992%
81	21.239	3115	3120	3123	rBV	997004	1268326	54.01%	11.192%
82	23.445	3490	3495	3503	rVB2	627219	1168765	49.77%	10.314%

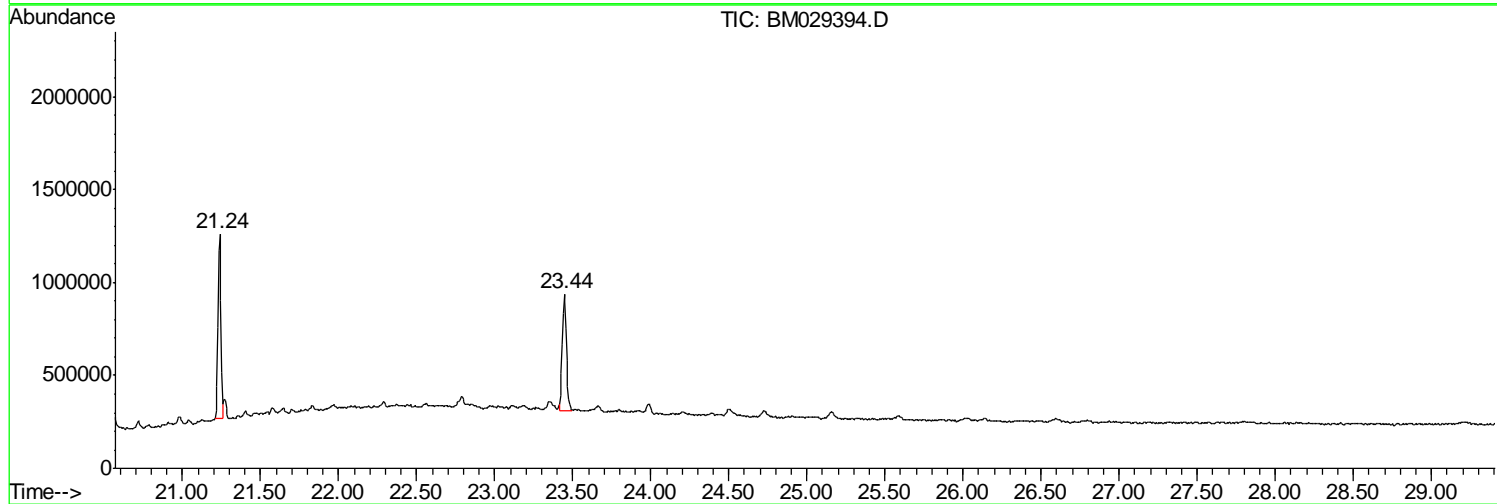
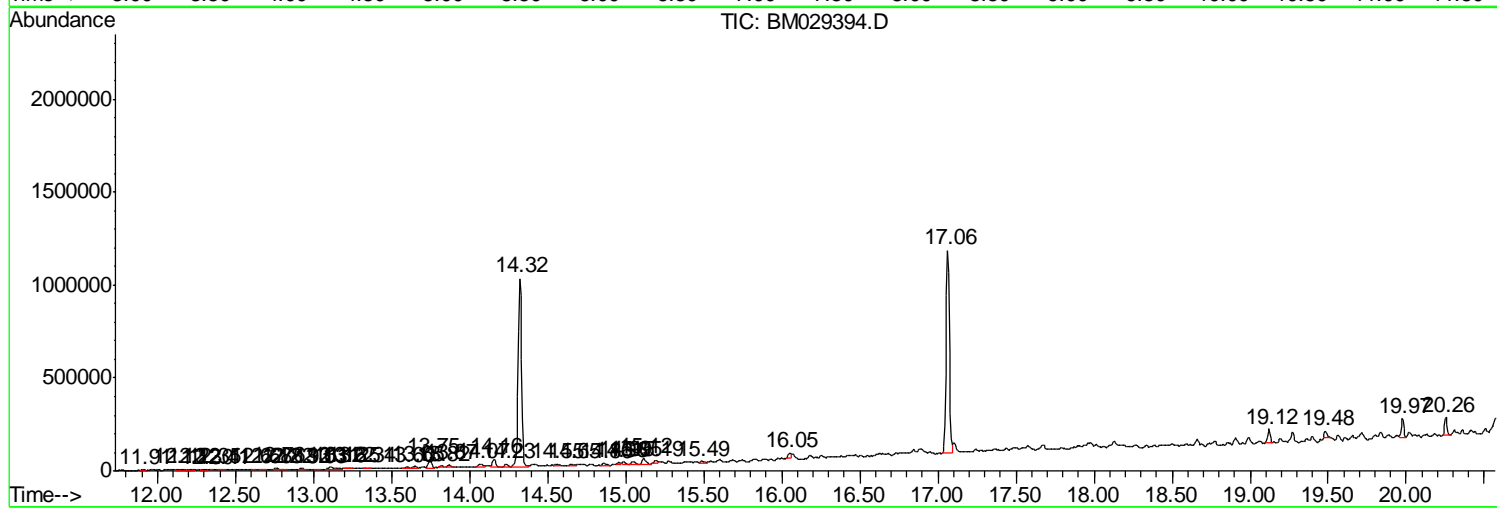
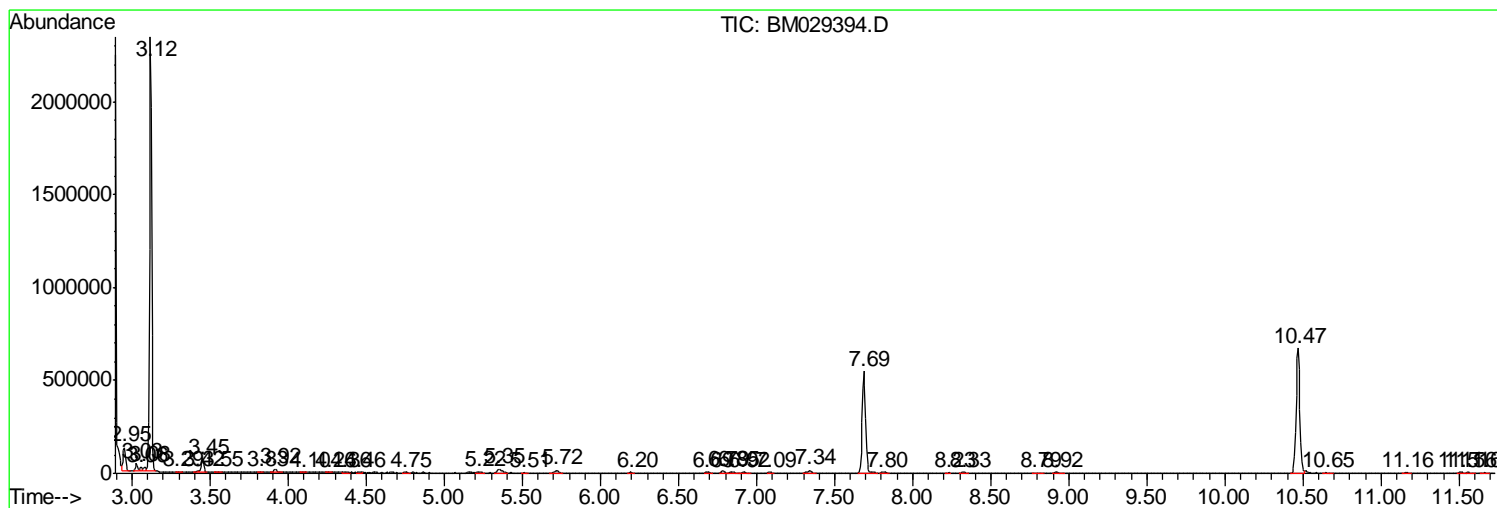
Sum of corrected areas: 11332070

Data Path : Z:\SVOASRV\HPCHEM1\BNA M\DATA\BM040721\
 Data File : BM029394.D
 Acq On : 08 Apr 2021 05:19
 Operator : CG/JU
 Sample : M1957-11
 Misc : GCMS CONFIRMATION
 ALS Vial : 33 Sample Multiplier: 1

Instrument :
 BNA_M
 ClientSampleId :
 C0B18

Quant Method : Z:\SVOASRV\HPCHEM1\BNA_M\METHODS\SOM-EPA-BM040721MA.M
 Quant Title : SVOA CALIBRATION

TIC Library : C:\DATABASE\NIST11.L
 TIC Integration Parameters: LSCINT.P



Data Path : Z:\SVOASRV\HPCHEM1\BNA M\DATA\BM040721\
 Data File : BM029394.D
 Acq On : 08 Apr 2021 05:19
 Operator : CG/JU
 Sample : M1957-11
 Misc : GCMS CONFIRMATION
 ALS Vial : 33 Sample Multiplier: 1

Instrument :
 BNA_M
 ClientSampleId :
 COB18

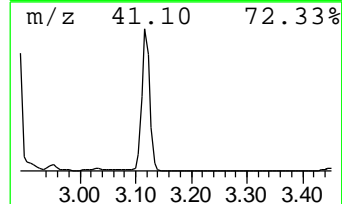
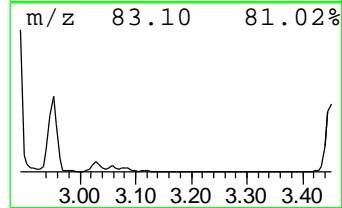
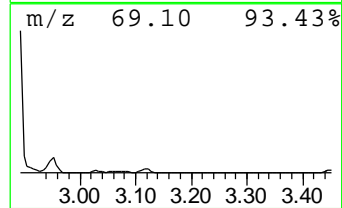
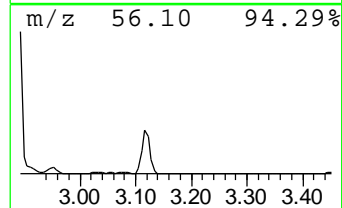
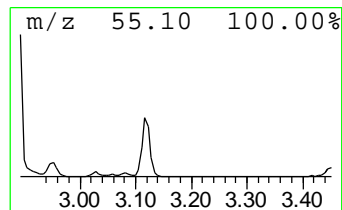
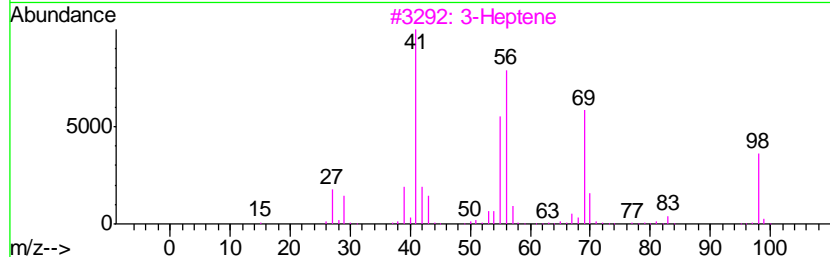
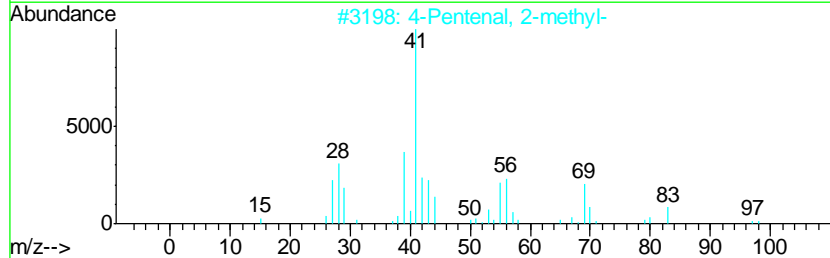
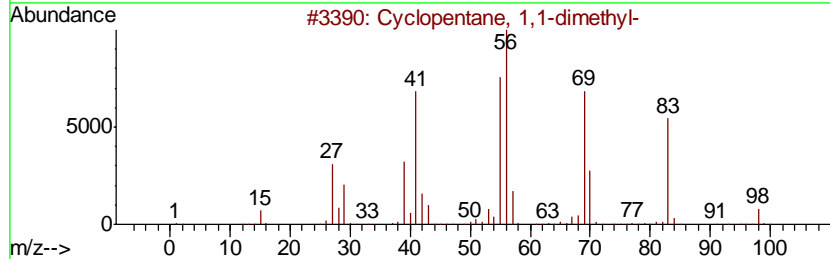
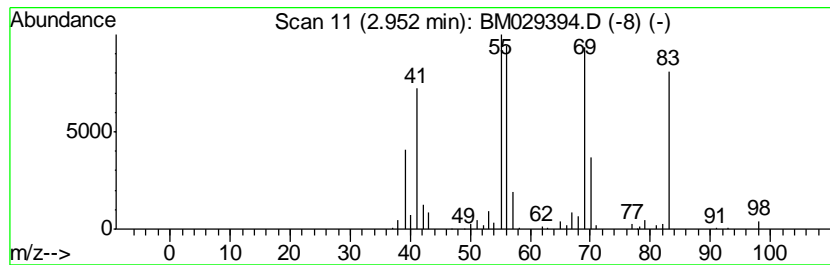
Quant Method : Z:\SVOASRV\HPCHEM1\BNA_M\METHODS\SOM-EPA-BM040721MA.M
 Quant Title : SVOA CALIBRATION

TIC Library : C:\DATABASE\NIST11.L
 TIC Integration Parameters: LSCINT.P

 Peak Number 1 (DEL) Alkane: Cyclic2.95 Concentration Rank 2

R.T.	EstConc	Area	Relative to ISTD	R.T.
2.95	3.20 ng/ul	136185	1,4-Dichlorobenzene-d4	7.69

Hit#	of	Tentative ID	MW	MolForm	CAS#	Qual
1	5	Cyclopentane, 1,1-dimethyl-	98	C7H14	001638-26-2	72
2		4-Pentenal, 2-methyl-	98	C6H10O	005187-71-3	50
3		3-Heptene	98	C7H14	000592-78-9	47
4		Cyclopentane, 1,1-dimethyl-	98	C7H14	001638-26-2	43
5		Cyclopropane, 1,1,2,2-tetramethyl-	98	C7H14	004127-47-3	35



Data Path : Z:\SVOASRV\HPCHEM1\BNA M\DATA\BM040721\
 Data File : BM029394.D
 Acq On : 08 Apr 2021 05:19
 Operator : CG/JU
 Sample : M1957-11
 Misc : GCMS CONFIRMATION
 ALS Vial : 33 Sample Multiplier: 1

Instrument :
 BNA_M
 ClientSampleID :
 C0B18

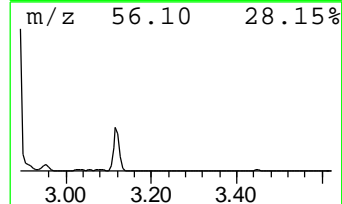
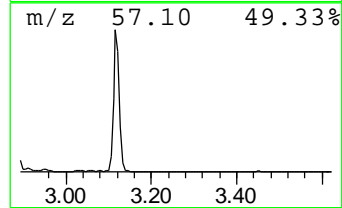
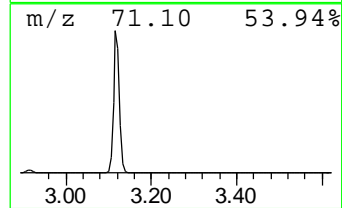
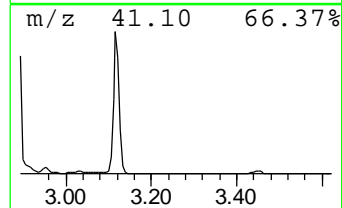
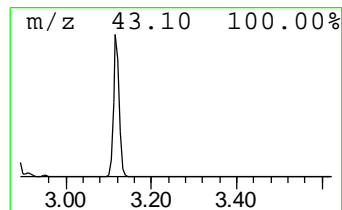
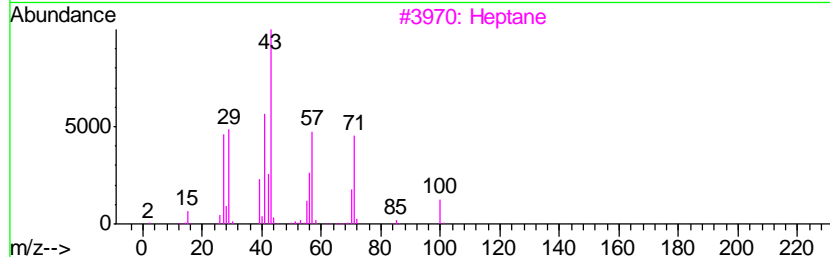
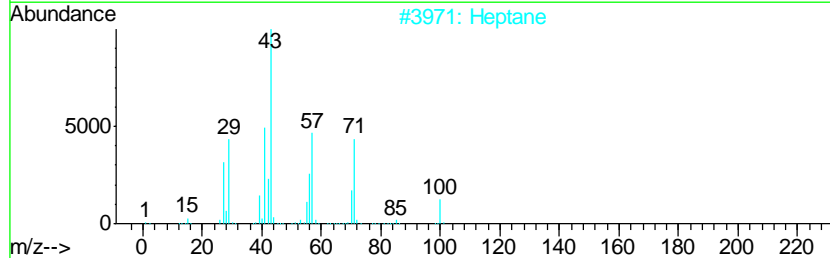
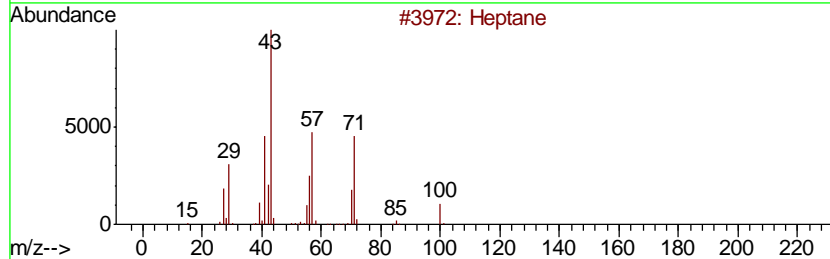
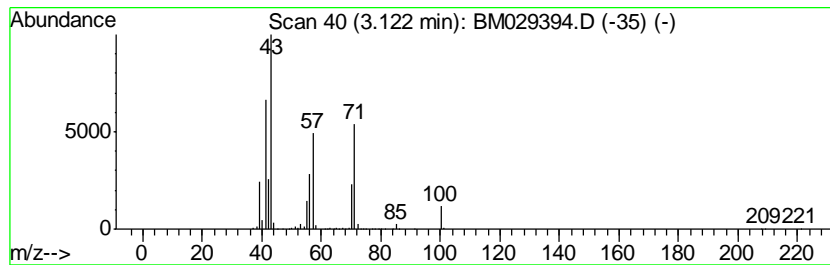
Quant Method : Z:\SVOASRV\HPCHEM1\BNA_M\METHODS\SOM-EPA-BM040721MA.M
 Quant Title : SVOA CALIBRATION

TIC Library : C:\DATABASE\NIST11.L
 TIC Integration Parameters: LSCINT.P

 Peak Number 2 (DEL) Alkane: Straight-Chai... Concentration Rank 1

R.T.	EstConc	Area	Relative to ISTD	R.T.
3.12	55.19 ng/ul	2348300	1,4-Dichlorobenzene-d4	7.69

Hit#	of	Tentative ID	MW	MolForm	CAS#	Qual
1	5	Heptane	100	C7H16	000142-82-5	91
2		Heptane	100	C7H16	000142-82-5	91
3		Heptane	100	C7H16	000142-82-5	87
4		Heptane	100	C7H16	000142-82-5	80
5		Hexane, 3-methyl-	100	C7H16	000589-34-4	45



Data Path : Z:\SVOASRV\HPCHEM1\BNA_M\DATA\BM040721\
Data File : BM029394.D
Acq On : 08 Apr 2021 05:19
Operator : CG/JU
Sample : M1957-11
Misc : GCMS CONFIRMATION
ALS Vial : 33 Sample Multiplier: 1

Instrument :
BNA_M
ClientSampleId :
C0B18

Quant Method : Z:\SVOASRV\HPCHEM1\BNA_M\METHODS\SOM-EPA-BM040721MA.M
Quant Title : SVOA CALIBRATION

TIC Library : C:\DATABASE\NIST11.L
TIC Integration Parameters: LSCINT.P

TIC Top Hit name	RT	EstConc	Units	Response	--Internal Standard--			
					#	RT	Resp	Conc
(DEL) Alkane: Cyc...	2.95	3.2	ng/ul	136185	1	7.69	850934	20.0
(DEL) Alkane: Str...	3.12	55.2	ng/ul	2348300	1	7.69	850934	20.0