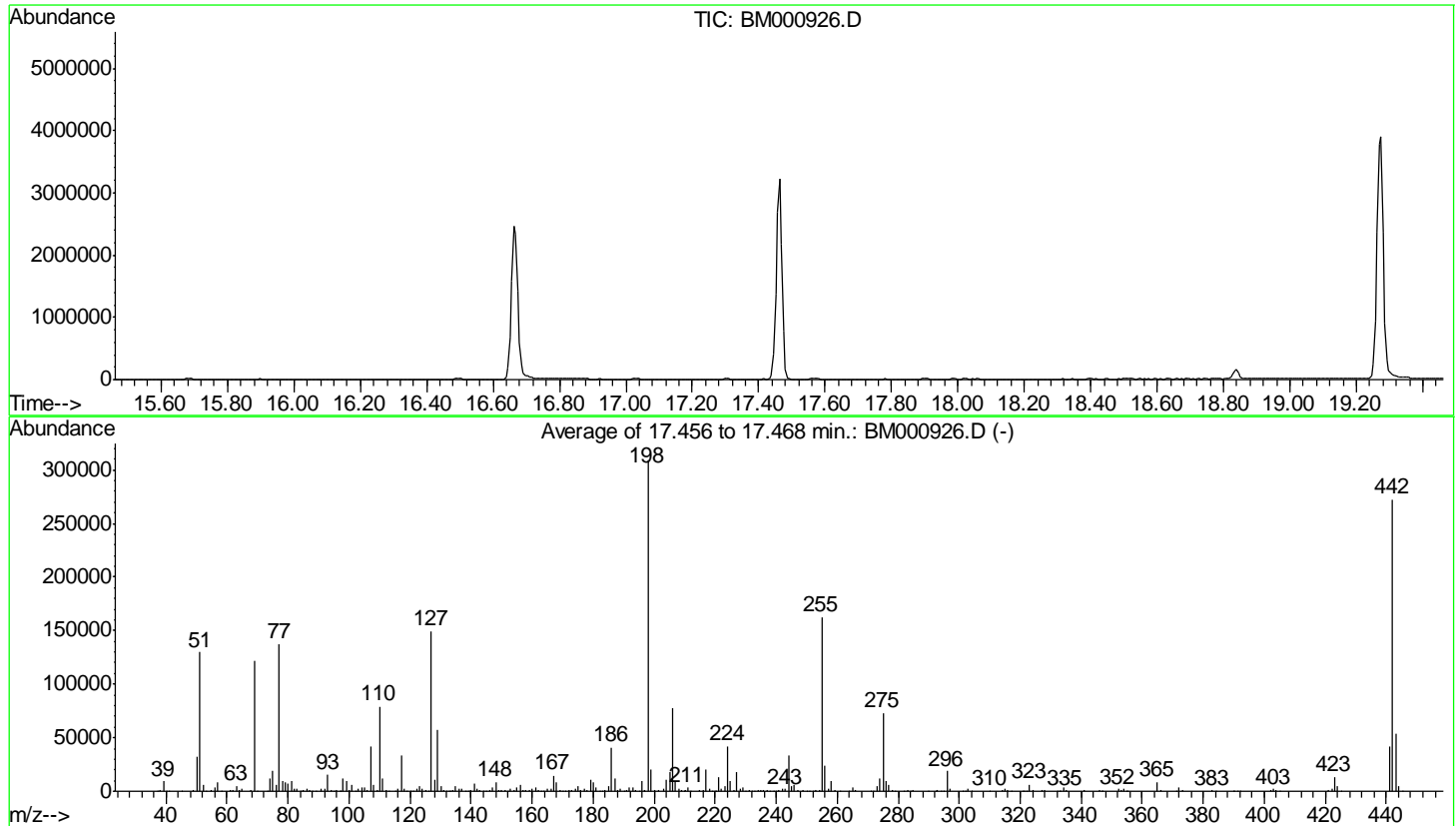


Data Path : Z:\HPCHEM1\BNA M\Data\BM040915\
 Data File : BM000926.D
 Acq On : 09 Apr 2015 17:14
 Operator : TP/IZ
 Sample : DFTPP
 Misc :
 ALS Vial : 1 Sample Multiplier: 1

Instrument :
 BNA_M
 ClientSampleId :
 DFTPP

Integration File: rteint.p

Method : Z:\HPCHEM1\BNA_M\METHODS\SIM-BM040915.M
 Title : ASP BNA STANDARDS FOR 5 POINT CALIBRATION
 Last Update : Fri Apr 10 16:15:17 2015



AutoFind: Scans 2511, 2512, 2513; Background Corrected with Scan 2504

| Target Mass | Rel. to Mass | Lower Limit% | Upper Limit% | Rel. Abn% | Raw Abn | Result Pass/Fail |
|-------------|--------------|--------------|--------------|-----------|---------|------------------|
| 51 | 198 | 10 | 80 | 42.0 | 129898 | PASS |
| 68 | 69 | 0.00 | 2 | 1.5 | 1821 | PASS |
| 69 | 198 | 0.00 | 100 | 39.5 | 122218 | PASS |
| 70 | 69 | 0.00 | 2 | 0.5 | 571 | PASS |
| 127 | 198 | 10 | 80 | 48.4 | 149682 | PASS |
| 197 | 198 | 0.00 | 2 | 0.6 | 1725 | PASS |
| 198 | 198 | 100 | 100 | 100.0 | 309184 | PASS |
| 199 | 198 | 5 | 9 | 6.7 | 20765 | PASS |
| 275 | 198 | 10 | 60 | 23.6 | 72970 | PASS |
| 365 | 198 | 1 | 100 | 2.7 | 8491 | PASS |
| 441 | 442 | 0.01 | 24 | 15.2 | 41504 | PASS |
| 442 | 198 | 50 | 100 | 88.2 | 272661 | PASS |
| 443 | 442 | 15 | 24 | 19.7 | 53640 | PASS |