

Data Path : Z:\SVOASRV\HPCHEM1\BNA_M\DATA\BM040919\
 Data File : BM019847.D
 Acq On : 10 Apr 2019 02:41
 Operator : JU/SJ
 Sample : K2304-01
 Misc :
 ALS Vial : 20 Sample Multiplier: 1

Instrument :
 BNA_M
 ClientSampleId :
 BFC51

Quant Time: Apr 10 04:42:33 2019
 Quant Method : Z:\SVOASRV\HPCHEM1\BNA_M\METHODS\SOM-EPA-BM032219MA.M
 Quant Title : SVOA CALIBRATION
 QLast Update : Wed Apr 10 03:34:56 2019
 Response via : Initial Calibration

Internal Standards	R.T.	QIon	Response	Conc	Units	Dev(Min)
1) 1,4-Dichlorobenzene-d4	7.55	152	146383	20.00	ng/ul	0.00
18) Naphthalene-d8	10.33	136	566459	20.00	ng/ul	0.00
36) Acenaphthene-d10	14.22	164	300771	20.00	ng/ul	0.00
62) Phenanthrene-d10	16.98	188	626800	20.00	ng/ul	0.00
78) Chrysene-d12	21.19	240	682287	20.00	ng/ul	0.00
86) Perylene-d12	23.39	264	803983	20.00	ng/ul	-0.02

System Monitoring Compounds

3) 1,4-Dioxane-d8	3.12	96	17381	4.65	ng/uL	0.00
5) Phenol-d5	6.75	99	133900	10.27	ng/ul	0.00
7) Bis-(2-Chloroethyl)ether-d	6.91	67	94093	10.78	ng/ul	0.00
9) 2-Chlorophenol-d4	7.09	132	116780	11.82	ng/ul	0.00
13) 4-Methylphenol-d8	8.28	113	86767	8.87	ng/ul	0.00
19) Nitrobenzene-d5	8.73	128	52853	13.08	ng/ul	0.00
22) 2-Nitrophenol-d4	9.45	143	59024	13.12	ng/ul	0.00
26) 2,4-Dichlorophenol-d3	9.99	165	89746	10.58	ng/ul	0.01
29) 4-Chloroaniline-d4	10.52	131	99479	9.76	ng/ul	0.01
44) Dimethylphthalate-d6	13.64	166	296341	12.21	ng/ul	0.00
47) Acenaphthylene-d8	13.91	160	349979	11.53	ng/ul	0.00
52) 4-Nitrophenol-d4	14.53	143	20544	5.40	ng/ul	0.04
58) Fluorene-d10	15.22	176	250594	11.98	ng/ul	0.00
63) 4,6-Dinitro-2-methylphenol	15.39	200	29565	7.13	ng/ul	0.00
71) Anthracene-d10	17.08	188	360351	11.98	ng/ul	0.00
79) Pyrene-d10	19.39	212	387819	12.31	ng/ul	0.00
90) Benzo(a)pyrene-d12	23.25	264	467111	10.96	ng/ul	-0.01

Target Compounds

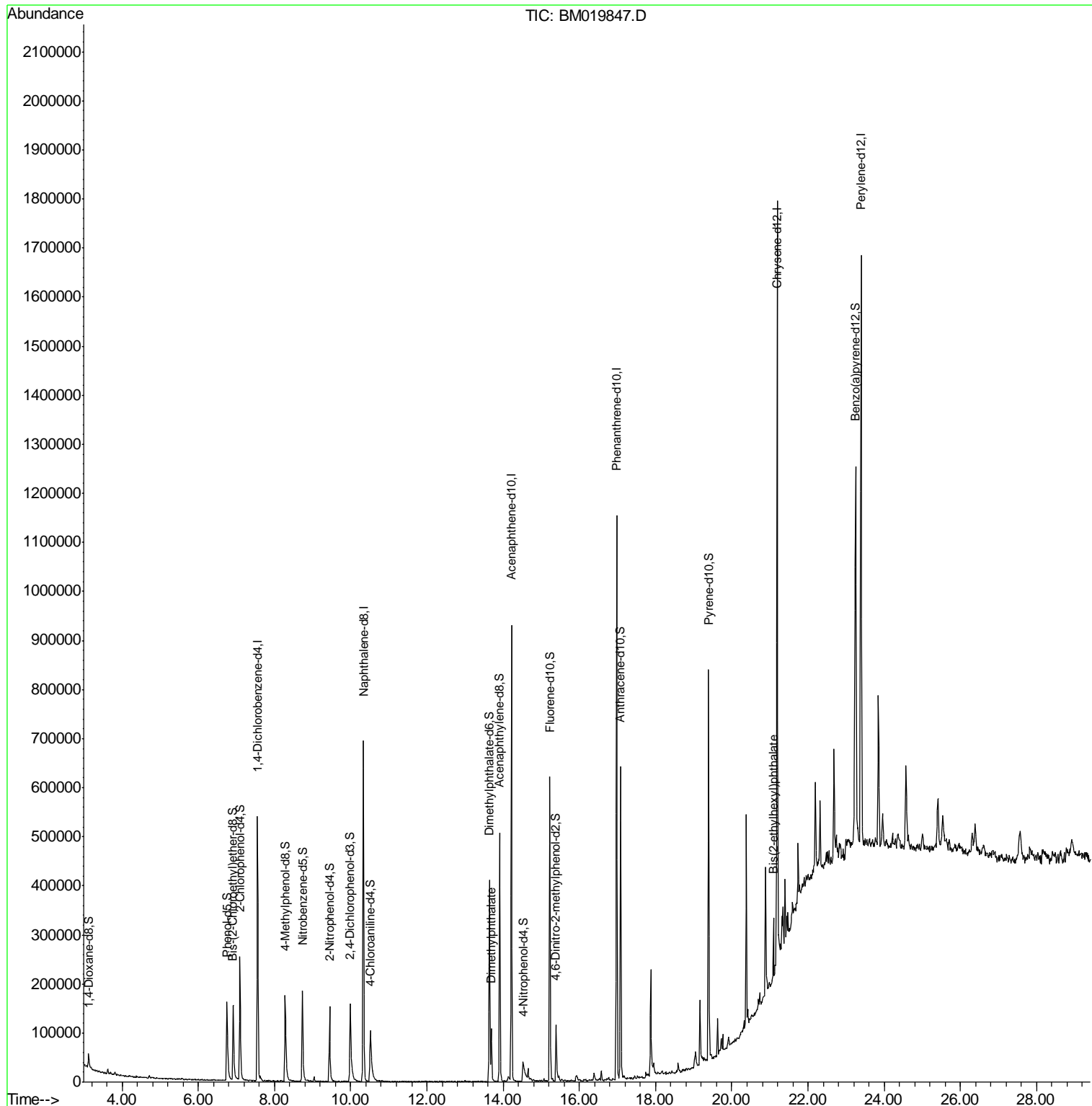
					Qvalue
45) Dimethylphthalate	13.69	163	75057	3.082	ng/ul 99
84) Bis(2-ethylhexyl)phthalate	21.09	149	41203	1.749	ng/ul# 90

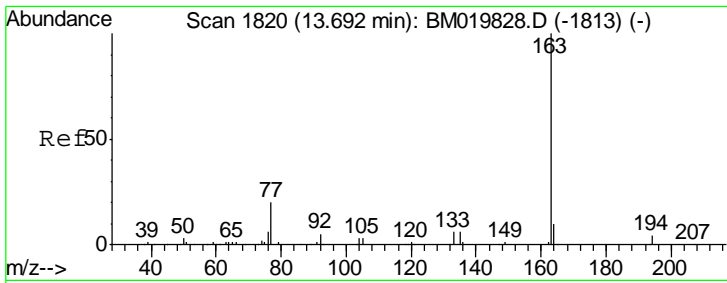
(#) = qualifier out of range (m) = manual integration (+) = signals summed

Data Path : Z:\SVOASRV\HPCHEM1\BNA_M\DATA\BM040919\
 Data File : BM019847.D
 Acq On : 10 Apr 2019 02:41
 Operator : JU/SJ
 Sample : K2304-01
 Misc :
 ALS Vial : 20 Sample Multiplier: 1

Instrument :
 BNA_M
 ClientSampleId :
 BFC51

Quant Time: Apr 10 04:42:33 2019
 Quant Method : Z:\SVOASRV\HPCHEM1\BNA_M\METHODS\SOM-EPA-BM032219MA.M
 Quant Title : SVOA CALIBRATION
 QLast Update : Wed Apr 10 03:34:56 2019
 Response via : Initial Calibration

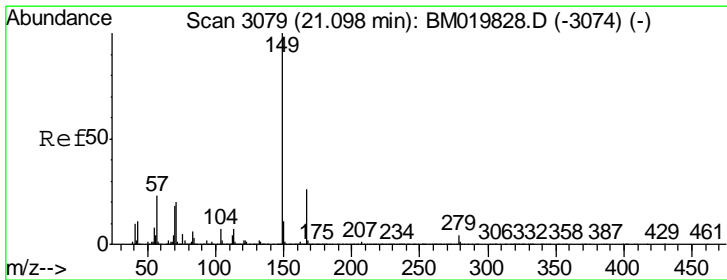
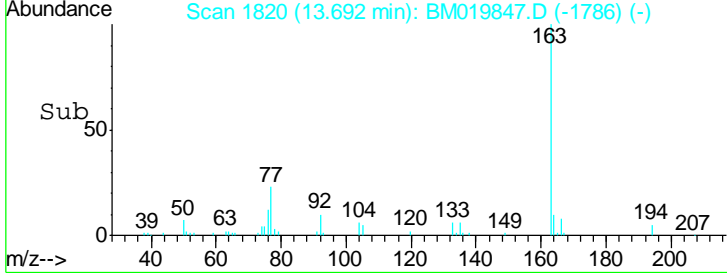
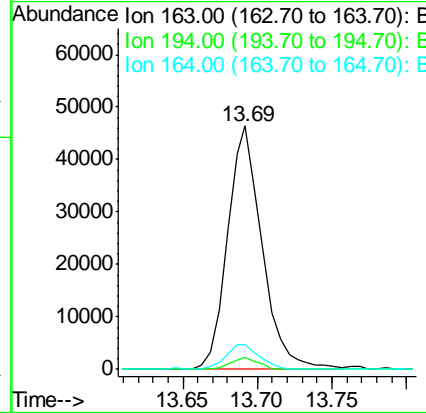
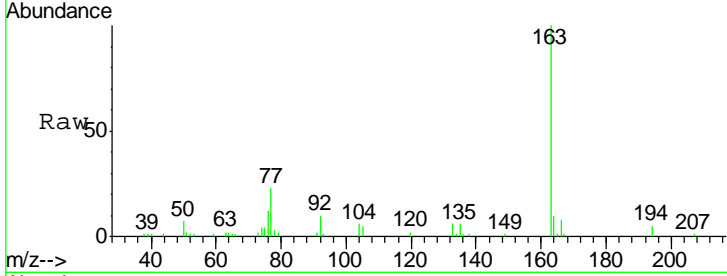




#45
 Dimethylphthalate
 Concen: 3.082 ng/ul
 RT: 13.69 min Scan# 1820
 Delta R.T. -0.00 min
 Lab File: BM019847.D
 Acq: 10 Apr 2019 02:41

Instrument :
 BNA_M
 ClientSampled :
 BFC51

Tgt Ion	Resp	Lower	Upper
163	100		
194	4.8	4.0	6.0
164	10.0	8.4	12.6



#84
 Bis(2-ethylhexyl)phthalate
 Concen: 1.749 ng/ul
 RT: 21.09 min Scan# 3078
 Delta R.T. -0.01 min
 Lab File: BM019847.D
 Acq: 10 Apr 2019 02:41

Tgt Ion	Resp	Lower	Upper
149	100		
167	22.5	23.0	34.6#
279	4.4	4.3	6.5

