

Data Path : Z:\SVOASRV\HPCHEM1\BNA M\DATA\BM040919\  
 Data File : BM019836.D  
 Acq On : 09 Apr 2019 19:52  
 Operator : JU/SJ  
 Sample : K2255-15  
 Misc :  
 ALS Vial : 10 Sample Multiplier: 1

Instrument :  
 BNA\_M  
 ClientSampleId :  
 BFC54

Manual Integrations  
 APPROVED

Sohil  
 4/10/2019 6:18:56 PM

Quant Time: Apr 10 04:16:46 2019  
 Quant Method : Z:\SVOASRV\HPCHEM1\BNA\_M\METHODS\SOM-EPA-BM032219MA.M  
 Quant Title : SVOA CALIBRATION  
 QLast Update : Wed Apr 10 03:34:56 2019  
 Response via : Initial Calibration

| Internal Standards        | R.T.  | QIon | Response | Conc  | Units | Dev(Min) |
|---------------------------|-------|------|----------|-------|-------|----------|
| 1) 1,4-Dichlorobenzene-d4 | 7.56  | 152  | 111693   | 20.00 | ng/ul | 0.00     |
| 18) Naphthalene-d8        | 10.33 | 136  | 423763   | 20.00 | ng/ul | 0.00     |
| 36) Acenaphthene-d10      | 14.22 | 164  | 211858   | 20.00 | ng/ul | 0.00     |
| 62) Phenanthrene-d10      | 16.98 | 188  | 441989   | 20.00 | ng/ul | 0.00     |
| 78) Chrysene-d12          | 21.20 | 240  | 463712   | 20.00 | ng/ul | 0.00     |
| 86) Perylene-d12          | 23.40 | 264  | 517730   | 20.00 | ng/ul | 0.00     |

## System Monitoring Compounds

|                                |       |     |        |       |       |      |
|--------------------------------|-------|-----|--------|-------|-------|------|
| 3) 1,4-Dioxane-d8              | 3.12  | 96  | 17926  | 6.28  | ng/uL | 0.00 |
| 5) Phenol-d5                   | 6.75  | 99  | 134943 | 13.57 | ng/ul | 0.00 |
| 7) Bis-(2-Chloroethyl)ether-d  | 6.91  | 67  | 92310  | 13.86 | ng/ul | 0.00 |
| 9) 2-Chlorophenol-d4           | 7.09  | 132 | 114521 | 15.19 | ng/ul | 0.00 |
| 13) 4-Methylphenol-d8          | 8.28  | 113 | 85295  | 11.42 | ng/ul | 0.00 |
| 19) Nitrobenzene-d5            | 8.73  | 128 | 50561  | 16.73 | ng/ul | 0.00 |
| 22) 2-Nitrophenol-d4           | 9.45  | 143 | 57583  | 17.12 | ng/ul | 0.00 |
| 26) 2,4-Dichlorophenol-d3      | 9.99  | 165 | 85161  | 13.42 | ng/ul | 0.01 |
| 29) 4-Chloroaniline-d4         | 10.52 | 131 | 111588 | 14.64 | ng/ul | 0.01 |
| 44) Dimethylphthalate-d6       | 13.65 | 166 | 286572 | 16.76 | ng/ul | 0.00 |
| 47) Acenaphthylene-d8          | 13.91 | 160 | 335273 | 15.69 | ng/ul | 0.00 |
| 52) 4-Nitrophenol-d4           | 14.52 | 143 | 29696m | 11.08 | ng/ul | 0.04 |
| 58) Fluorene-d10               | 15.22 | 176 | 226135 | 15.35 | ng/ul | 0.00 |
| 63) 4,6-Dinitro-2-methylphenol | 15.39 | 200 | 26381  | 9.03  | ng/ul | 0.00 |
| 71) Anthracene-d10             | 17.08 | 188 | 323382 | 15.25 | ng/ul | 0.00 |
| 79) Pyrene-d10                 | 19.39 | 212 | 338957 | 15.83 | ng/ul | 0.00 |
| 90) Benzo(a)pyrene-d12         | 23.26 | 264 | 391736 | 14.27 | ng/ul | 0.00 |

## Target Compounds

| Target Compounds      | R.T.  | QIon | Response | Conc  | Units | Ovalue |
|-----------------------|-------|------|----------|-------|-------|--------|
| 45) Dimethylphthalate | 13.69 | 163  | 73476    | 4.284 | ng/ul | 98     |

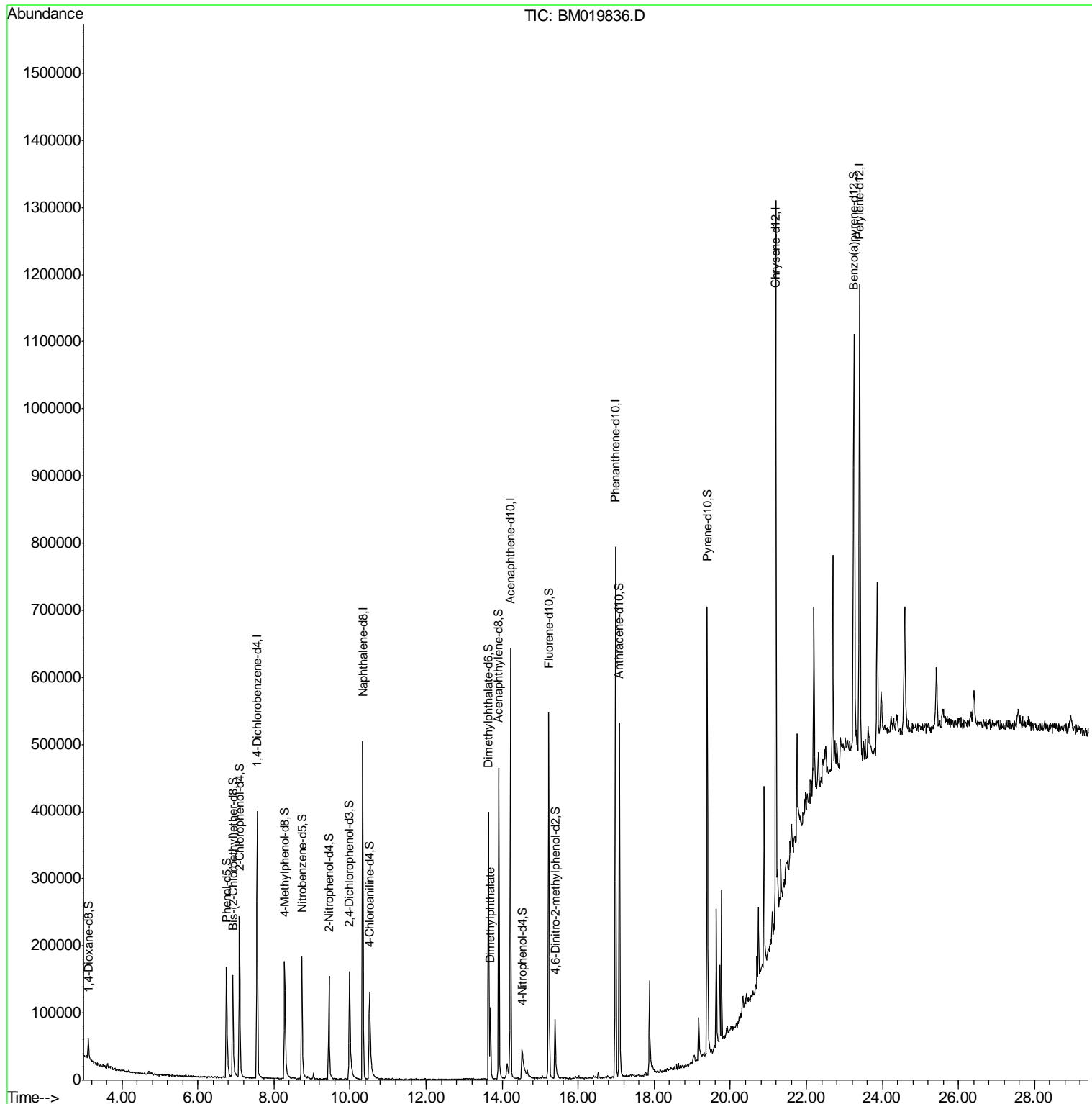
(#) = qualifier out of range (m) = manual integration (+) = signals summed

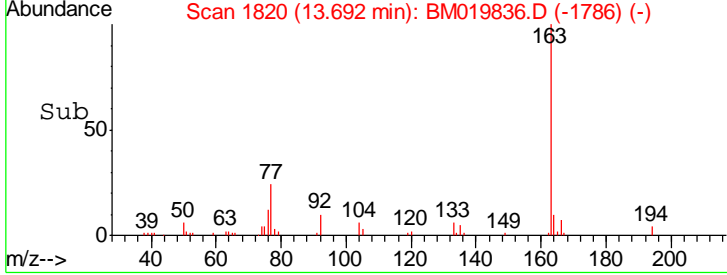
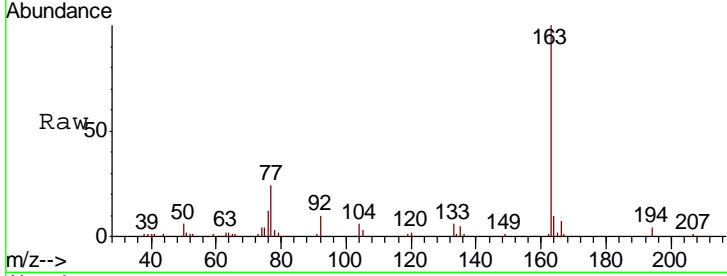
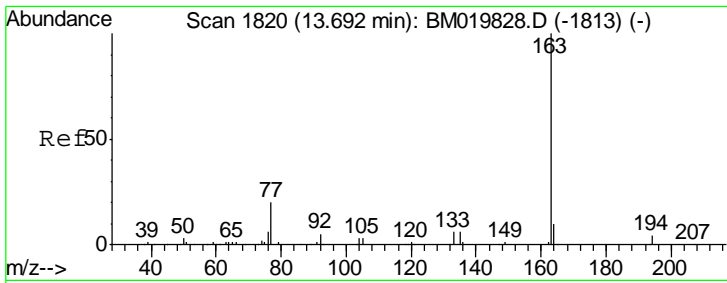
Data Path : Z:\SVOASRV\HPCHEM1\BNA M\DATA\BM040919\  
 Data File : BM019836.D  
 Acq On : 09 Apr 2019 19:52  
 Operator : JU/SJ  
 Sample : K2255-15  
 Misc :  
 ALS Vial : 10 Sample Multiplier: 1

Instrument :  
 BNA\_M  
 ClientSampled :  
 BFC54

Manual Integrations  
**APPROVED**  
 Sohil  
 4/10/2019 6:18:56 PM

Quant Time: Apr 10 04:16:46 2019  
 Quant Method : Z:\SVOASRV\HPCHEM1\BNA\_M\METHODS\SOM-EPA-BM032219MA.M  
 Quant Title : SVOA CALIBRATION  
 QLast Update : Wed Apr 10 03:34:56 2019  
 Response via : Initial Calibration





#45  
 Dimethylphthalate  
 Concen: 4.284 ng/ul  
 RT: 13.69 min Scan# 1820  
 Delta R.T. 0.00 min  
 Lab File: BM019836.D  
 Acq: 09 Apr 2019 19:52

Tot Ion: 163 Resp: 73476

| Ion | Ratio | Lower | Upper |
|-----|-------|-------|-------|
| 163 | 100   |       |       |
| 194 | 4.2   | 4.0   | 6.0   |
| 164 | 10.0  | 8.4   | 12.6  |

**Instrument :**  
 BNA\_M  
**ClientSampled :**  
 BFC54

**Manual Integrations**  
**APPROVED**  
 Sohil  
 4/10/2019 6:18:56 PM

