

Data Path : Z:\svoasrv\HPCHEM1\BNA_M\Data\BM041324\
 Data File : BM045220.D
 Acq On : 14 Apr 2024 00:17
 Operator : MA/JU
 Sample : PB160163BS
 Misc :
 ALS Vial : 17 Sample Multiplier: 1

Instrument :
 BNA_M
 ClientSampleId :
 SLCS163

Quant Time: Apr 15 00:37:28 2024
 Quant Method : Z:\svoasrv\HPCHEM1\BNA_M\Methods\SFAM-EPA-SIM-BM040424.M
 Quant Title : ASP BNA STANDARDS FOR 5 POINT CALIBRATION
 QLast Update : Mon Apr 15 00:32:25 2024
 Response via : Initial Calibration

Compound	R.T.	QIon	Response	Conc	Units	Dev(Min)

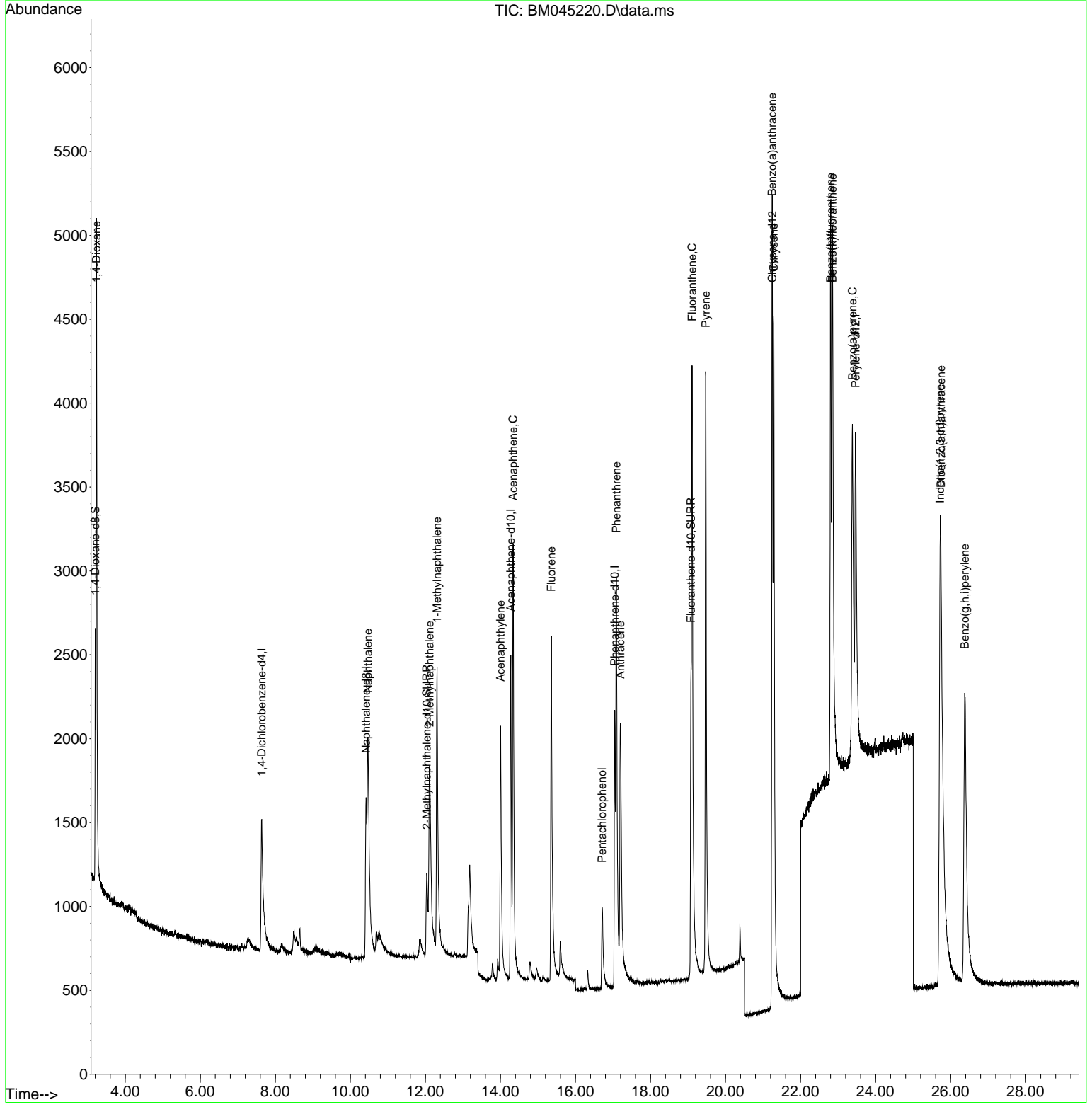
Internal Standards						
1) 1,4-Dichlorobenzene-d4	7.635	152	1094	0.400	ng/ul	0.02
4) Naphthalene-d8	10.419	136	3086	0.400	ng/ul #	0.03
9) Acenaphthene-d10	14.274	164	1561	0.400	ng/ul	0.01
13) Phenanthrene-d10	17.047	188	3552	0.400	ng/ul	0.02
17) Chrysene-d12	21.249	240	3072	0.400	ng/ul	0.00
23) Perylene-d12	23.467	264	3707	0.400	ng/ul #	0.00
System Monitoring Compounds						
3) 1,4-Dioxane-d8	3.205	96	1027	0.715	ng/ul	0.00
6) 2-Methylnaphthalene-d10	12.035	152	1506	0.360	ng/ul	0.04
18) Fluoranthene-d10	19.080	212	3399	0.438	ng/ul	0.01
Target Compounds						
						Qvalue
2) 1,4-Dioxane	3.234	88	2940	2.134	ng/ul#	83
5) Naphthalene	10.468	128	3227	0.394	ng/ul#	93
7) 2-Methylnaphthalene	12.112	142	1823	0.373	ng/ul	98
8) 1-Methylnaphthalene	12.310	142	1914	0.358	ng/ul	97
10) Acenaphthylene	14.001	152	3051	0.392	ng/ul	96
11) Acenaphthene	14.339	153	2226	0.399	ng/ul	97
12) Fluorene	15.357	166	2418	0.387	ng/ul#	98
14) Pentachlorophenol	16.710	266	686	0.824	ng/ul	96
15) Phenanthrene	17.090	178	3841	0.384	ng/ul	95
16) Anthracene	17.199	178	3861	0.392	ng/ul	94
19) Fluoranthene	19.108	202	4895	0.446	ng/ul	97
20) Pyrene	19.471	202	5248	0.453	ng/ul	95
21) Benzo(a)anthracene	21.240	228	3963	0.371	ng/ul	98
22) Chrysene	21.287	228	6114	0.458	ng/ul	97
24) Benzo(b)fluoranthene	22.800	252	5144	0.384	ng/ul	94
25) Benzo(k)fluoranthene	22.847	252	6939	0.463	ng/ul	92
26) Benzo(a)pyrene	23.382	252	5296	0.414	ng/ul#	90
27) Indeno(1,2,3-cd)pyrene	25.719	276	6940	0.396	ng/ul#	100
28) Dibenzo(a,h)anthracene	25.739	278	5347	0.385	ng/ul#	86
29) Benzo(g,h,i)perylene	26.377	276	6131	0.406	ng/ul	95

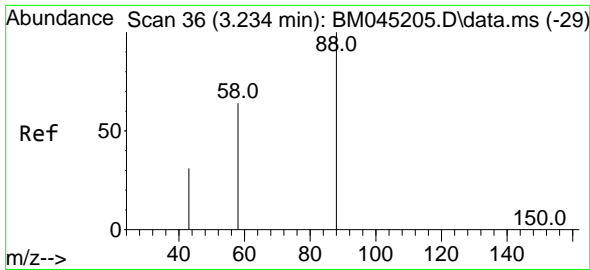
(#) = qualifier out of range (m) = manual integration (+) = signals summed

Data Path : Z:\svoasrv\HPCHEM1\BNA_M\Data\BM041324\
 Data File : BM045220.D
 Acq On : 14 Apr 2024 00:17
 Operator : MA/JU
 Sample : PB160163BS
 Misc :
 ALS Vial : 17 Sample Multiplier: 1

Instrument :
 BNA_M
 ClientSampleId :
 SLCS163

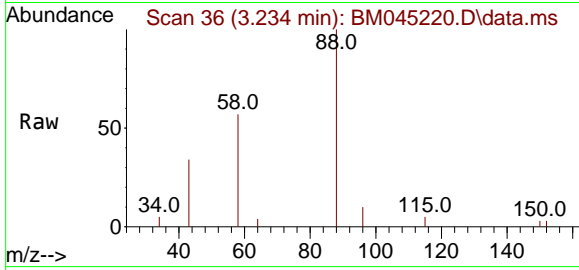
Quant Time: Apr 15 00:37:28 2024
 Quant Method : Z:\svoasrv\HPCHEM1\BNA_M\Methods\SFAM-EPA-SIM-BM040424.M
 Quant Title : ASP BNA STANDARDS FOR 5 POINT CALIBRATION
 QLast Update : Mon Apr 15 00:32:25 2024
 Response via : Initial Calibration



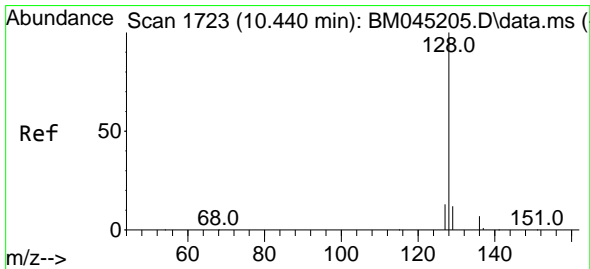
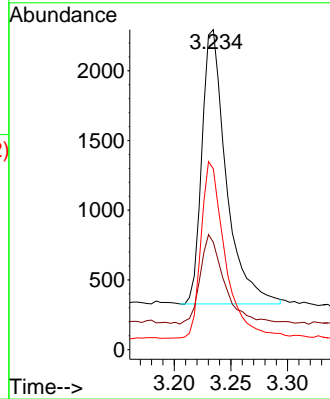
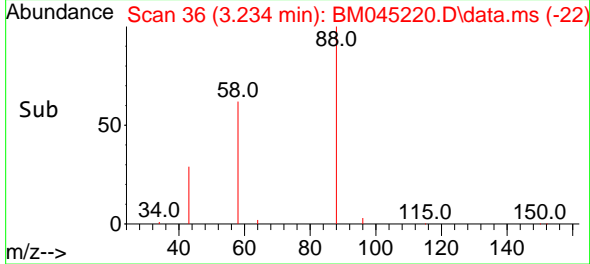


#2
 1,4-Dioxane
 Concen: 2.134 ng/u1
 RT: 3.234 min Scan# 30
 Delta R.T. 0.000 min
 Lab File: BM045220.D
 Acq: 14 Apr 2024 00:17

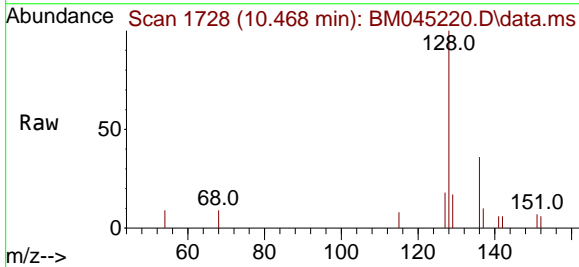
Instrument :
 BNA_M
 ClientSampleId :
 SLCS163



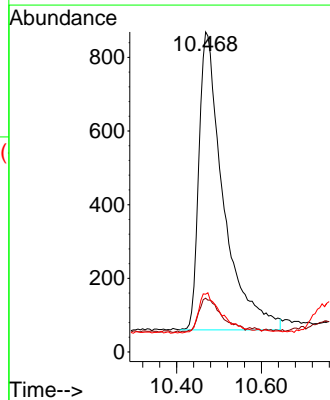
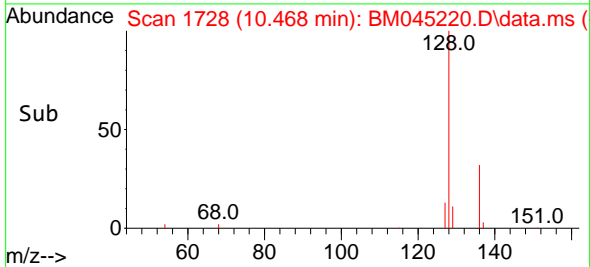
Tgt Ion: 88 Resp: 2940
 Ion Ratio Lower Upper
 88 100
 43 33.6 30.6 46.0
 58 56.6 32.6 48.8#

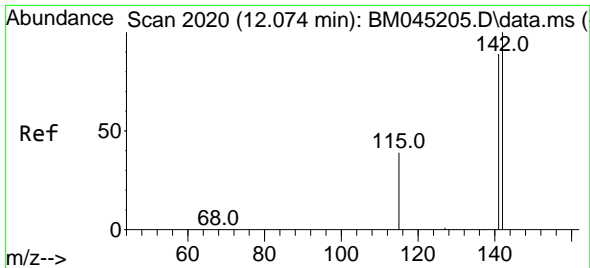


#5
 Naphthalene
 Concen: 0.394 ng/u1
 RT: 10.468 min Scan# 1728
 Delta R.T. 0.028 min
 Lab File: BM045220.D
 Acq: 14 Apr 2024 00:17



Tgt Ion:128 Resp: 3227
 Ion Ratio Lower Upper
 128 100
 129 16.8 11.3 16.9
 127 18.1 11.9 17.9#

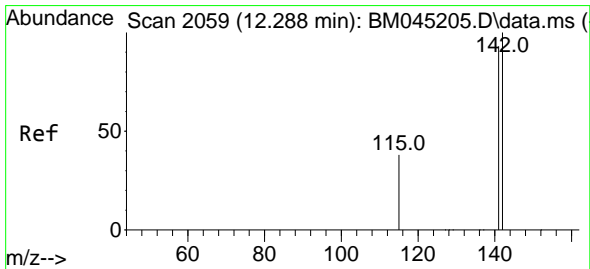
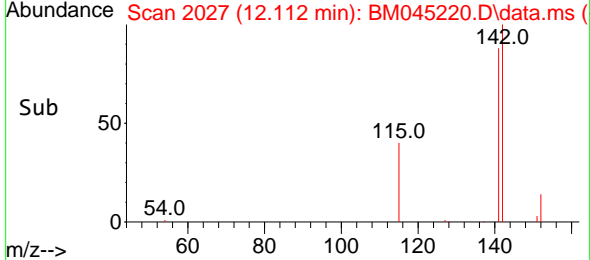
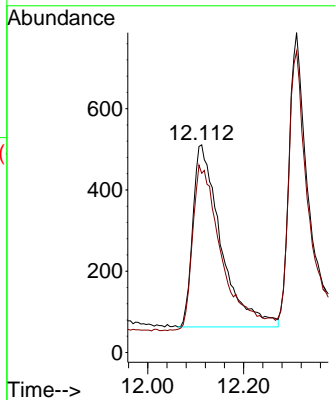
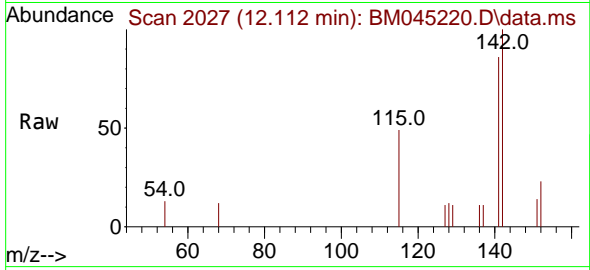




#7
 2-Methylnaphthalene
 Concen: 0.373 ng/u1
 RT: 12.112 min Scan# 2027
 Delta R.T. 0.039 min
 Lab File: BM045220.D
 Acq: 14 Apr 2024 00:17

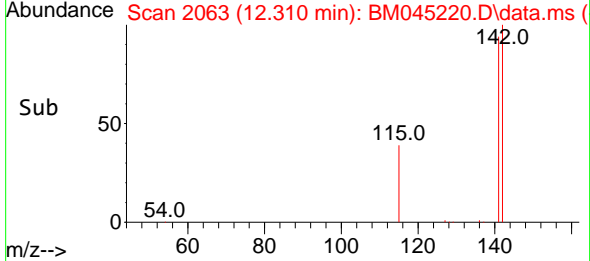
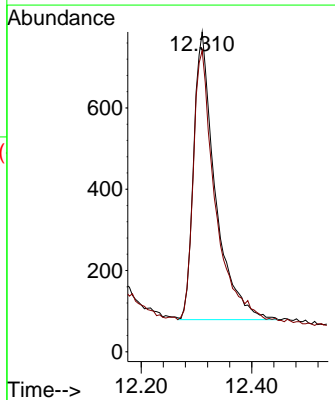
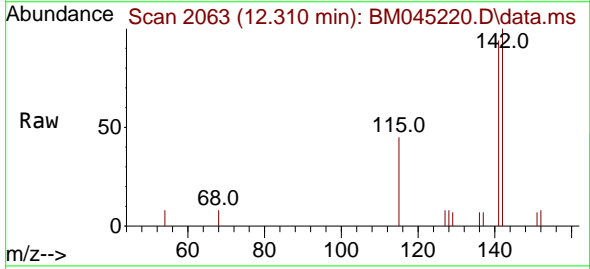
Instrument : BNA_M
 ClientSampleId : SLCS163

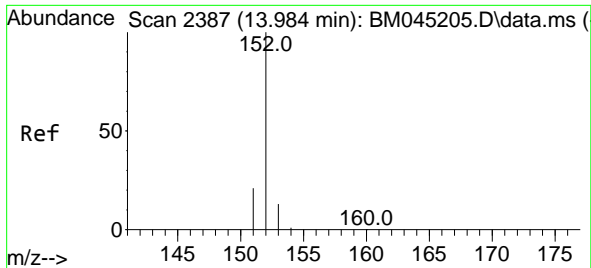
Tgt Ion:142 Resp: 1823
 Ion Ratio Lower Upper
 142 100
 141 94.6 73.8 110.8



#8
 1-Methylnaphthalene
 Concen: 0.358 ng/u1
 RT: 12.310 min Scan# 2063
 Delta R.T. 0.022 min
 Lab File: BM045220.D
 Acq: 14 Apr 2024 00:17

Tgt Ion:142 Resp: 1914
 Ion Ratio Lower Upper
 142 100
 141 95.4 74.2 111.2



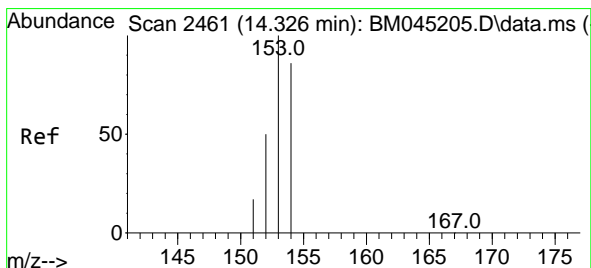
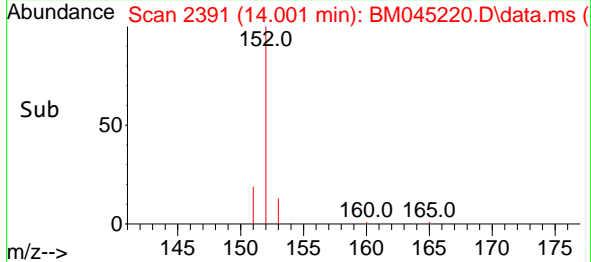
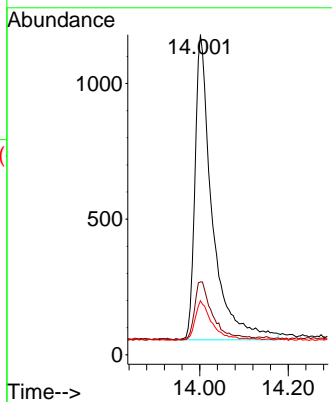
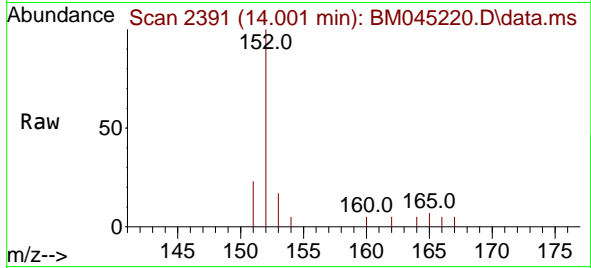


#10
 Acenaphthylene
 Concen: 0.392 ng/u1
 RT: 14.001 min Scan# 21
 Delta R.T. 0.018 min
 Lab File: BM045220.D
 Acq: 14 Apr 2024 00:17

Instrument :
 BNA_M
 ClientSampleId :
 SLCS163

Tgt Ion:152 Resp: 3051

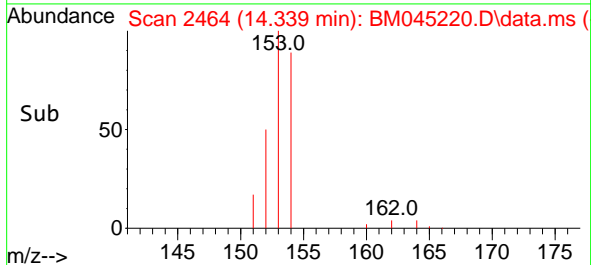
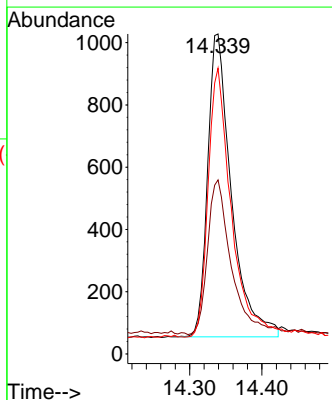
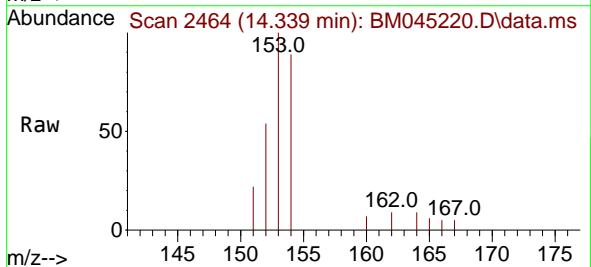
Ion	Ratio	Lower	Upper
152	100		
151	22.8	17.0	25.4
153	16.9	11.9	17.9

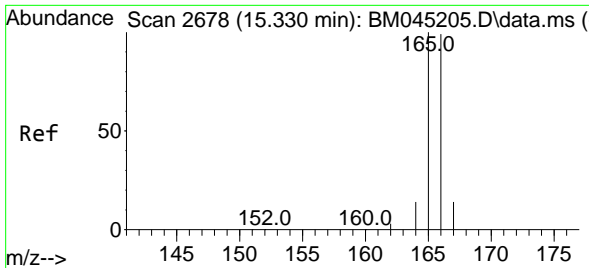


#11
 Acenaphthene
 Concen: 0.399 ng/u1
 RT: 14.339 min Scan# 2464
 Delta R.T. 0.013 min
 Lab File: BM045220.D
 Acq: 14 Apr 2024 00:17

Tgt Ion:153 Resp: 2226

Ion	Ratio	Lower	Upper
153	100		
152	54.4	41.2	61.8
154	89.3	69.4	104.0



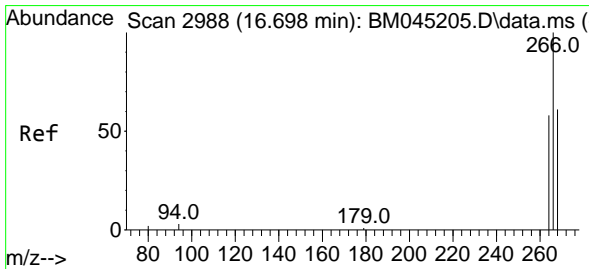
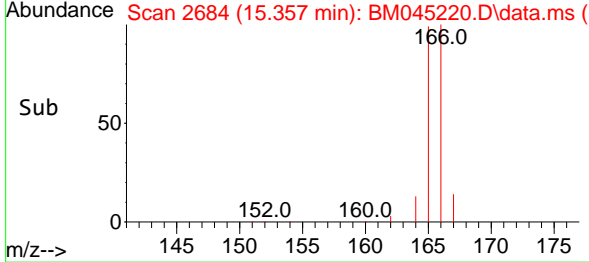
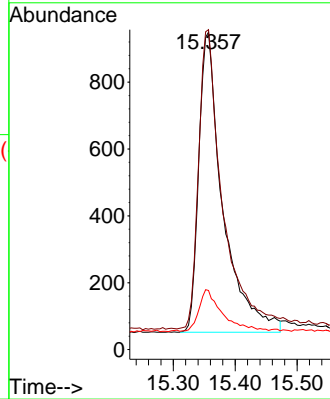
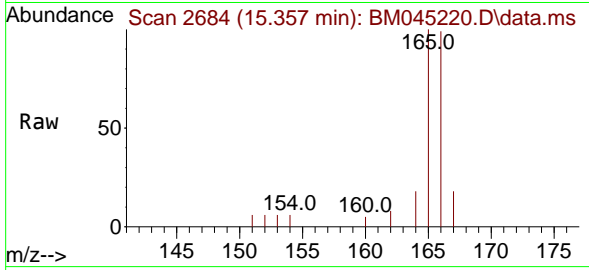


#12
 Fluorene
 Concen: 0.387 ng/uI
 RT: 15.357 min Scan# 2018
 Delta R.T. 0.027 min
 Lab File: BM045220.D
 Acq: 14 Apr 2024 00:17

Instrument :
 BNA_M
 ClientSampleId :
 SLCS163

Tgt Ion:166 Resp: 2418

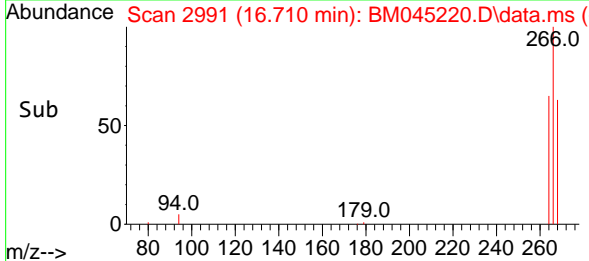
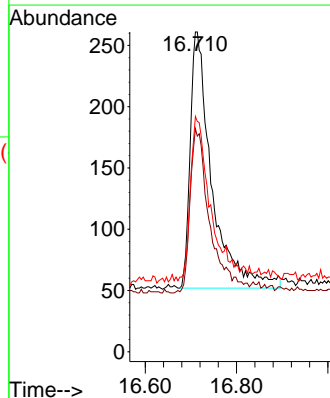
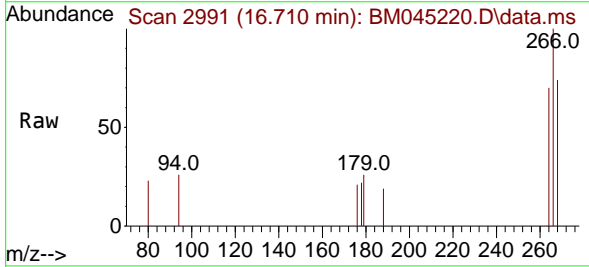
Ion	Ratio	Lower	Upper
166	100		
165	100.7	79.9	119.9
167	18.6	12.2	18.2#

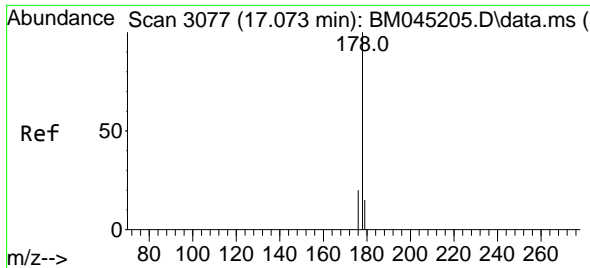


#14
 Pentachlorophenol
 Concen: 0.824 ng/uI
 RT: 16.710 min Scan# 2991
 Delta R.T. 0.012 min
 Lab File: BM045220.D
 Acq: 14 Apr 2024 00:17

Tgt Ion:266 Resp: 686

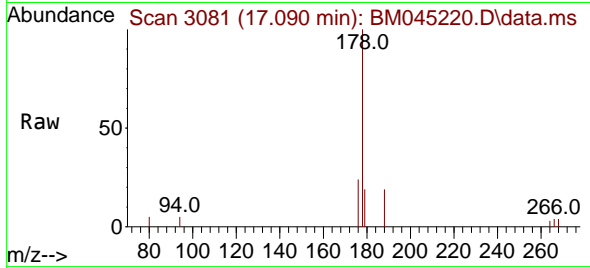
Ion	Ratio	Lower	Upper
266	100		
264	58.9	48.3	72.5
268	60.6	52.6	79.0



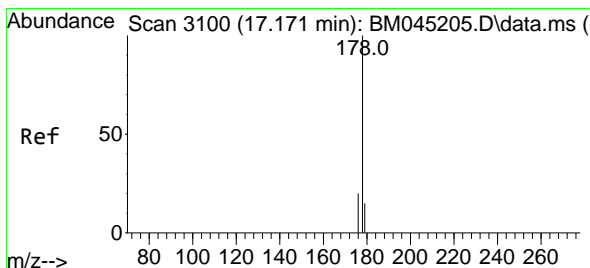
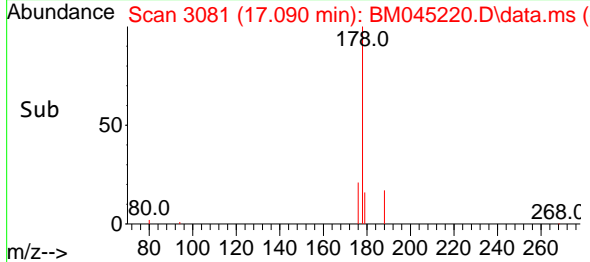
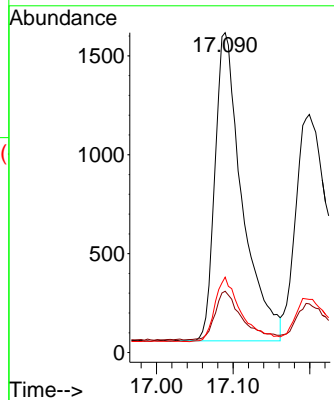


#15
 Phenanthrene
 Concen: 0.384 ng/u1
 RT: 17.090 min Scan# 3077
 Delta R.T. 0.016 min
 Lab File: BM045220.D
 Acq: 14 Apr 2024 00:17

Instrument :
 BNA_M
 ClientSampleId :
 SLCS163

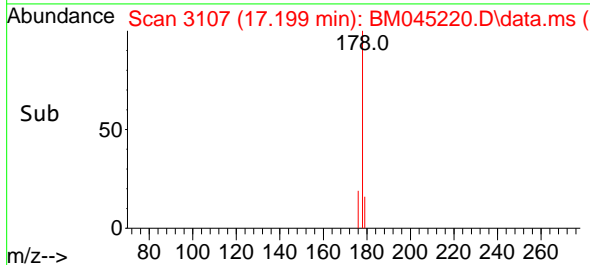
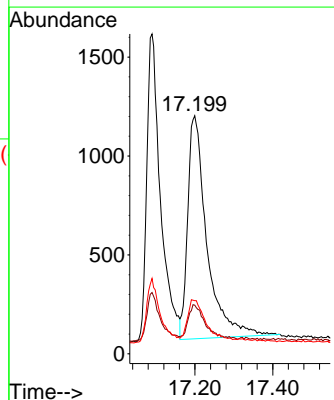
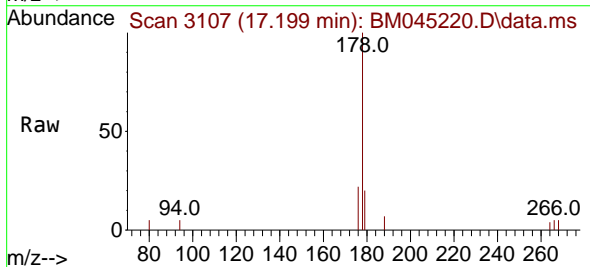


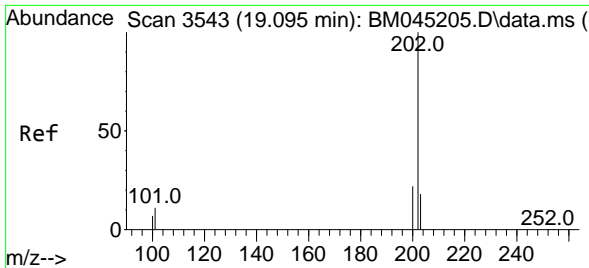
Tgt Ion:178 Resp: 3841
 Ion Ratio Lower Upper
 178 100
 179 19.2 13.7 20.5
 176 23.6 17.0 25.4



#16
 Anthracene
 Concen: 0.392 ng/u1
 RT: 17.199 min Scan# 3107
 Delta R.T. 0.029 min
 Lab File: BM045220.D
 Acq: 14 Apr 2024 00:17

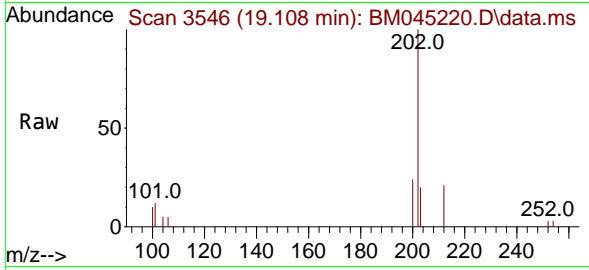
Tgt Ion:178 Resp: 3861
 Ion Ratio Lower Upper
 178 100
 179 20.4 13.8 20.8
 176 22.3 16.2 24.4



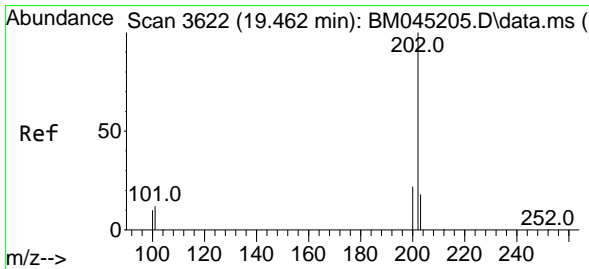
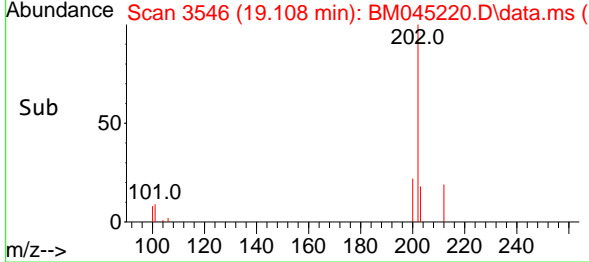
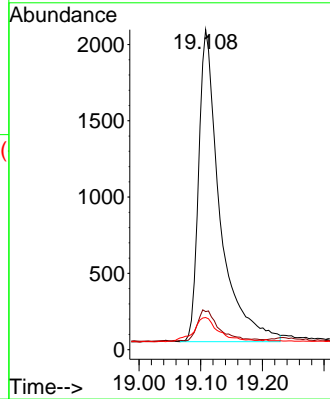


#19
 Fluoranthene
 Concen: 0.446 ng/u1
 RT: 19.108 min Scan# 31
 Delta R.T. 0.013 min
 Lab File: BM045220.D
 Acq: 14 Apr 2024 00:17

Instrument :
 BNA_M
 ClientSampleId :
 SLCS163

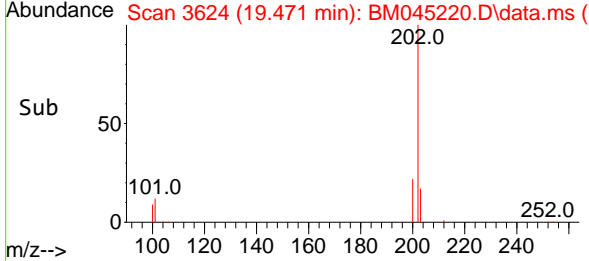
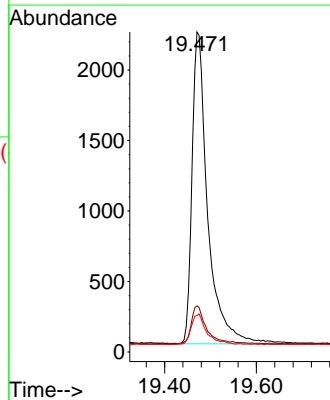
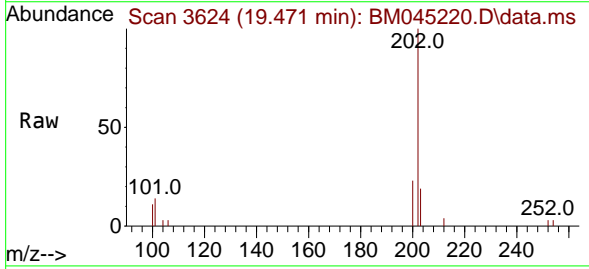


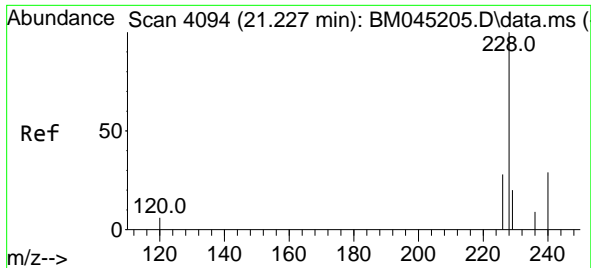
Tgt Ion:202 Resp: 4895
 Ion Ratio Lower Upper
 202 100
 101 11.9 8.8 13.2
 100 10.1 7.0 10.4



#20
 Pyrene
 Concen: 0.453 ng/u1
 RT: 19.471 min Scan# 3624
 Delta R.T. 0.009 min
 Lab File: BM045220.D
 Acq: 14 Apr 2024 00:17

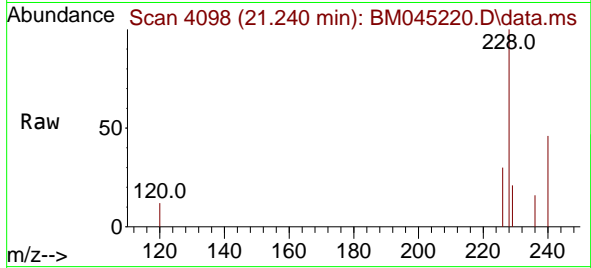
Tgt Ion:202 Resp: 5248
 Ion Ratio Lower Upper
 202 100
 101 14.4 9.8 14.6
 100 11.4 8.1 12.1



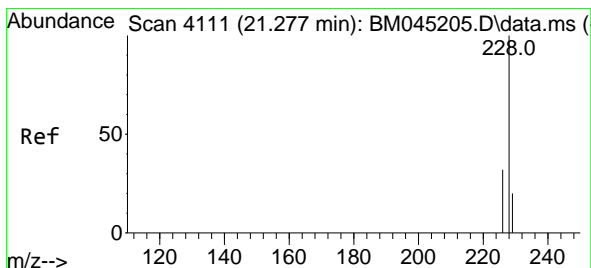
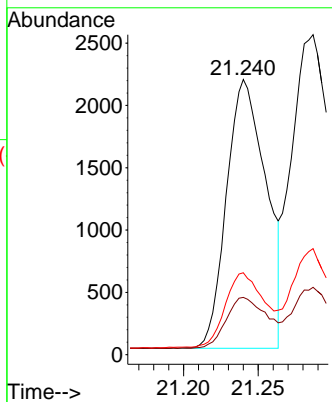
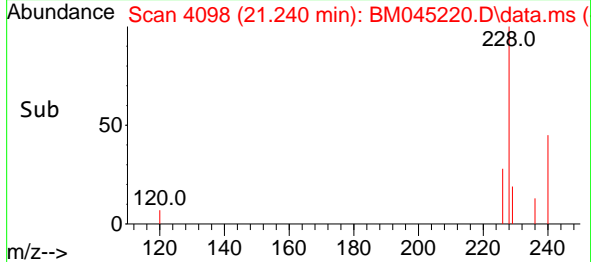


#21
 Benzo(a)anthracene
 Concen: 0.371 ng/u1
 RT: 21.240 min Scan# 4098
 Delta R.T. 0.013 min
 Lab File: BM045220.D
 Acq: 14 Apr 2024 00:17

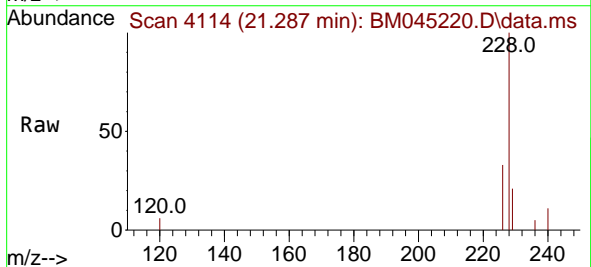
Instrument :
 BNA_M
 ClientSampleId :
 SLCS163



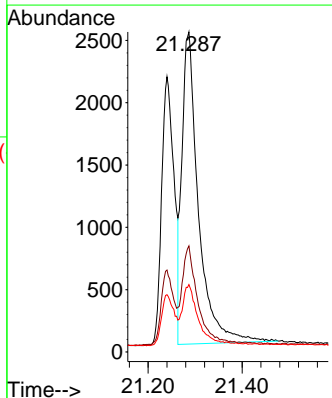
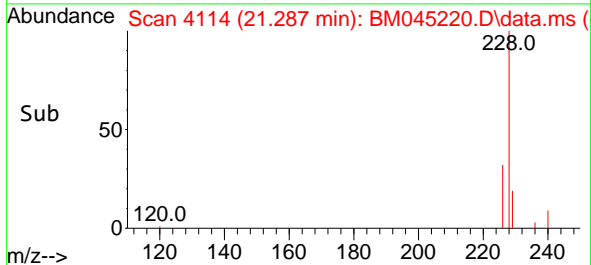
Tgt Ion:228 Resp: 3963
 Ion Ratio Lower Upper
 228 100
 229 20.8 16.4 24.6
 226 29.8 22.3 33.5

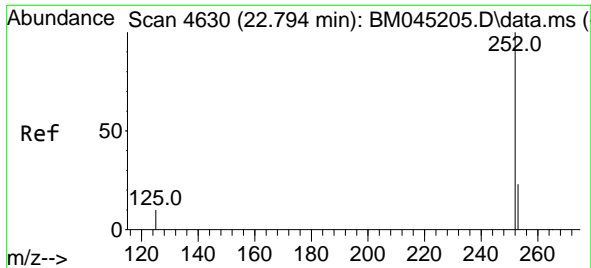


#22
 Chrysene
 Concen: 0.458 ng/u1
 RT: 21.287 min Scan# 4114
 Delta R.T. 0.010 min
 Lab File: BM045220.D
 Acq: 14 Apr 2024 00:17



Tgt Ion:228 Resp: 6114
 Ion Ratio Lower Upper
 228 100
 226 33.1 24.9 37.3
 229 21.0 15.9 23.9

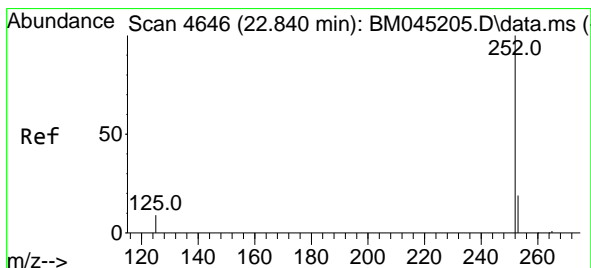
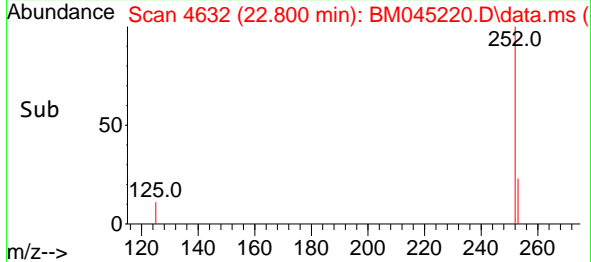
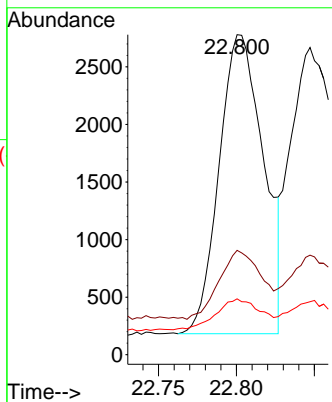
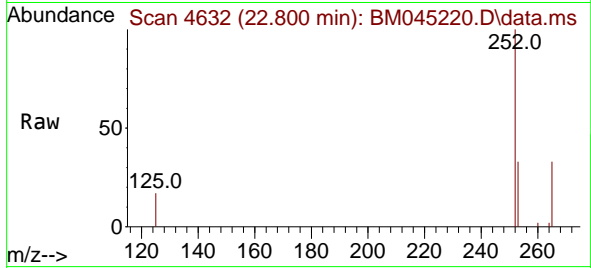




#24
 Benzo(b)fluoranthene
 Concen: 0.384 ng/u1
 RT: 22.800 min Scan# 4632
 Delta R.T. 0.007 min
 Lab File: BM045220.D
 Acq: 14 Apr 2024 00:17

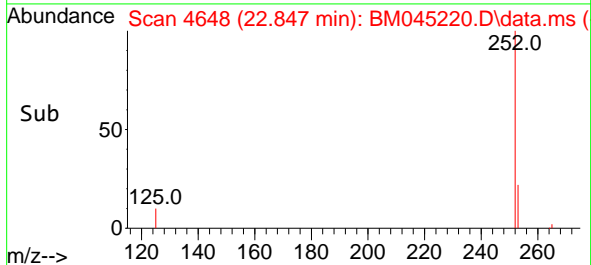
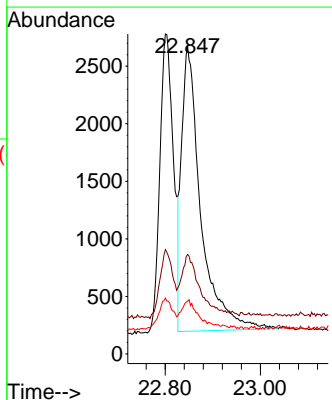
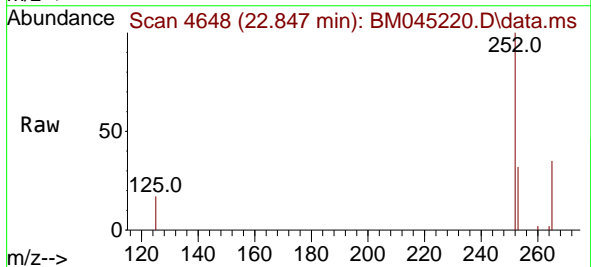
Instrument : BNA_M
 ClientSampleId : BM045220.D
 SLCS163

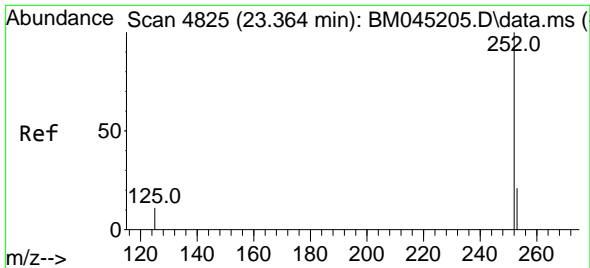
Tgt Ion	Resp	Lower	Upper
252	100		
253	32.6	0.0	56.4
125	17.4	0.0	33.4



#25
 Benzo(k)fluoranthene
 Concen: 0.463 ng/u1
 RT: 22.847 min Scan# 4648
 Delta R.T. 0.007 min
 Lab File: BM045220.D
 Acq: 14 Apr 2024 00:17

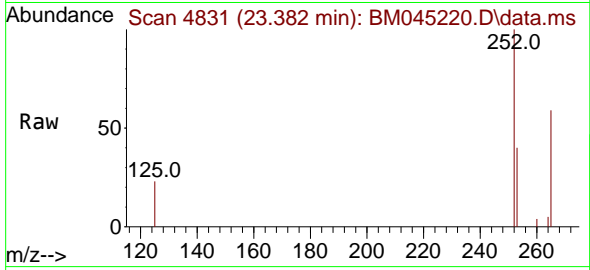
Tgt Ion	Resp	Lower	Upper
252	100		
253	32.4	22.3	33.5
125	17.2	11.6	17.4



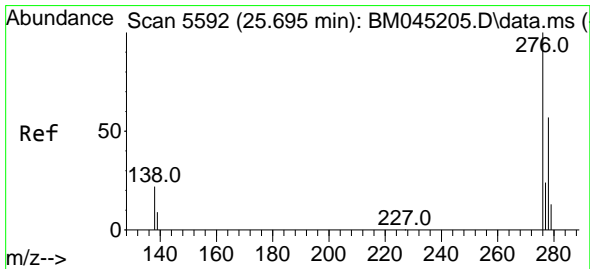
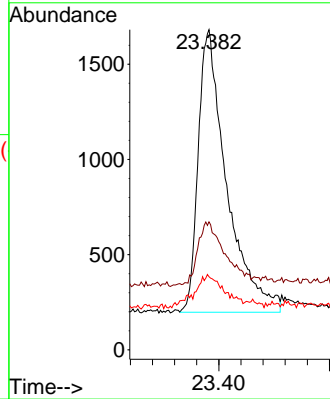
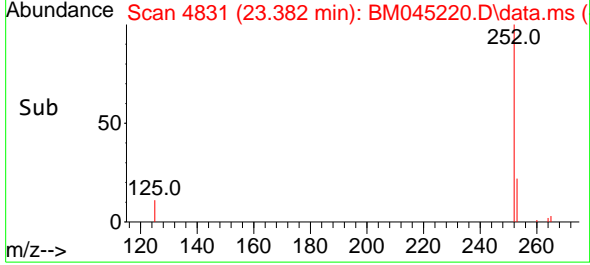


#26
 Benzo(a)pyrene
 Concen: 0.414 ng/u1
 RT: 23.382 min Scan# 4831
 Delta R.T. 0.019 min
 Lab File: BM045220.D
 Acq: 14 Apr 2024 00:17

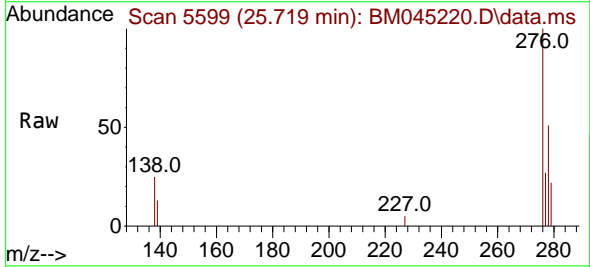
Instrument :
 BNA_M
 ClientSampleId :
 SLCS163



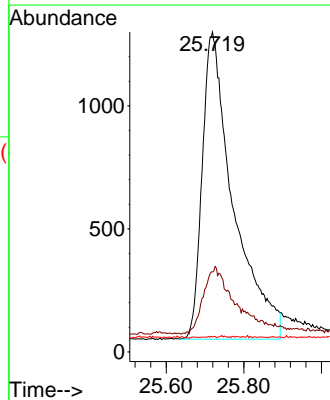
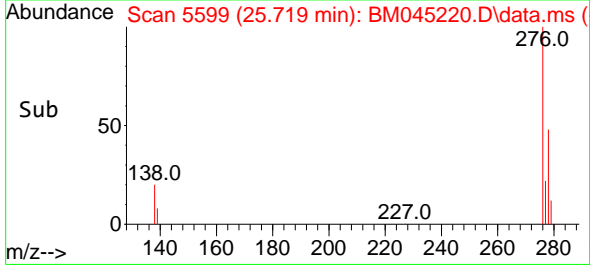
Tgt Ion:252 Resp: 5296
 Ion Ratio Lower Upper
 252 100
 253 40.0 24.6 37.0#
 125 22.8 18.2 27.4

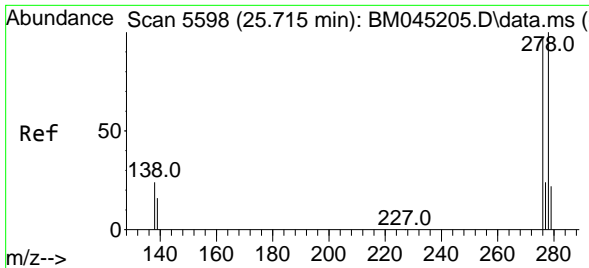


#27
 Indeno(1,2,3-cd)pyrene
 Concen: 0.396 ng/u1
 RT: 25.719 min Scan# 5599
 Delta R.T. 0.024 min
 Lab File: BM045220.D
 Acq: 14 Apr 2024 00:17



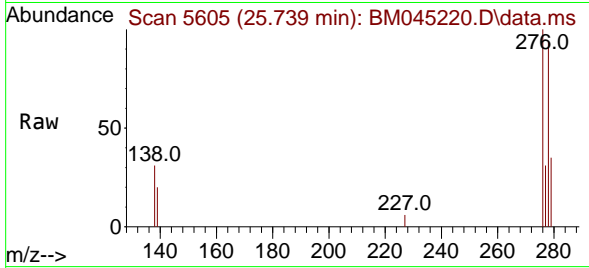
Tgt Ion:276 Resp: 6940
 Ion Ratio Lower Upper
 276 100
 138 23.3 0.0 0.0#
 227 0.1 0.1 0.1



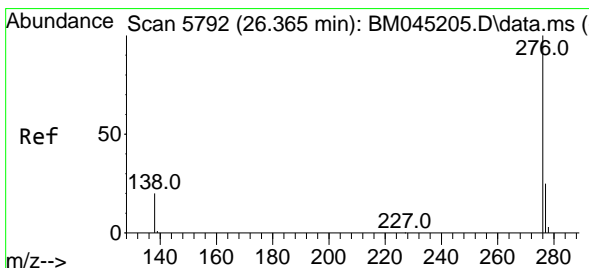
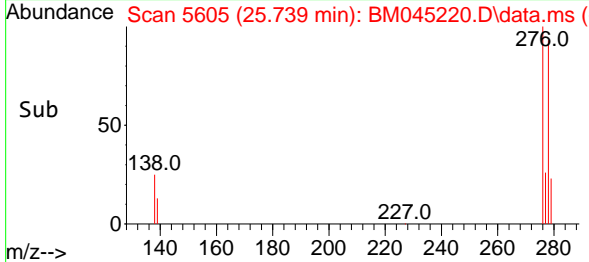
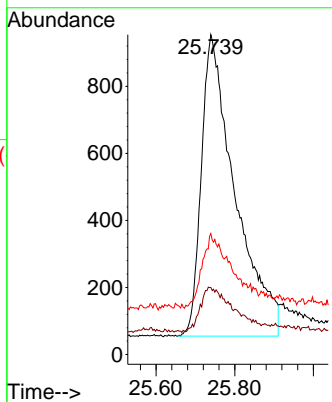


#28
 Dibenzo(a,h)anthracene
 Concen: 0.385 ng/ul
 RT: 25.739 min Scan# 51
 Delta R.T. 0.024 min
 Lab File: BM045220.D
 Acq: 14 Apr 2024 00:17

Instrument :
 BNA_M
 ClientSampleId :
 SLCS163



Tgt Ion:278 Resp: 5347
 Ion Ratio Lower Upper
 278 100
 139 21.0 13.6 20.4#
 279 37.8 23.0 34.4#



#29
 Benzo(g,h,i)perylene
 Concen: 0.406 ng/ul
 RT: 26.377 min Scan# 5795
 Delta R.T. 0.011 min
 Lab File: BM045220.D
 Acq: 14 Apr 2024 00:17

Tgt Ion:276 Resp: 6131
 Ion Ratio Lower Upper
 276 100
 138 23.8 16.8 25.2
 277 27.8 20.3 30.5

