

Data Path : Z:\svoasrv\HPCHEM1\BNA\_M\Data\BM041324\  
 Data File : BM045237.D  
 Acq On : 14 Apr 2024 11:04  
 Operator : MA/JU  
 Sample : PB160207BS  
 Misc :  
 ALS Vial : 35 Sample Multiplier: 1

Instrument :  
 BNA\_M  
 ClientSampleId :  
 SLCS207

Manual Integrations  
 APPROVED

Reviewed By :Yogesh Patel 04/16/2024  
 Supervised By :mohammad ahmed 04/17/2024

Quant Time: Apr 15 00:39:46 2024  
 Quant Method : Z:\svoasrv\HPCHEM1\BNA\_M\Methods\SFAM-EPA-SIM-BM040424.M  
 Quant Title : ASP BNA STANDARDS FOR 5 POINT CALIBRATION  
 QLast Update : Mon Apr 15 00:32:25 2024  
 Response via : Initial Calibration

Compound	R.T.	QIon	Response	Conc	Units	Dev(Min)
Internal Standards						
1) 1,4-Dichlorobenzene-d4	7.652	152	954	0.400	ng/ul	0.04
4) Naphthalene-d8	10.424	136	2847	0.400	ng/ul #	0.03
9) Acenaphthene-d10	14.274	164	1396	0.400	ng/ul	0.01
13) Phenanthrene-d10	17.043	188	3226	0.400	ng/ul #	0.01
17) Chrysene-d12	21.249	240	2565	0.400	ng/ul #	0.00
23) Perylene-d12	23.461	264	3083	0.400	ng/ul #	0.00
System Monitoring Compounds						
3) 1,4-Dioxane-d8	3.205	96	1063	0.848	ng/ul	0.00
6) 2-Methylnaphthalene-d10	12.041	152	1364	0.353	ng/ul	0.04
18) Fluoranthene-d10	19.075	212	2935	0.453	ng/ul	0.00
Target Compounds						
						Qvalue
2) 1,4-Dioxane	3.234	88	3021	2.515	ng/ul#	82
5) Naphthalene	10.473	128	2918	0.386	ng/ul#	91
7) 2-Methylnaphthalene	12.112	142	1635	0.362	ng/ul	98
8) 1-Methylnaphthalene	12.310	142	1780	0.361	ng/ul	98
10) Acenaphthylene	14.001	152	2795	0.401	ng/ul#	92
11) Acenaphthene	14.334	153	2074	0.416	ng/ul	98
12) Fluorene	15.352	166	2177	0.390	ng/ul#	98
14) Pentachlorophenol	16.705	266	580	0.767	ng/ul	97
15) Phenanthrene	17.085	178	3473	0.382	ng/ul	97
16) Anthracene	17.195	178	3458	0.387	ng/ul	93
19) Fluoranthene	19.103	202	4291	0.468	ng/ul#	94
20) Pyrene	19.466	202	4572	0.472	ng/ul#	95
21) Benzo(a)anthracene	21.240	228	3298	0.369	ng/ul	97
22) Chrysene	21.284	228	4874	0.437	ng/ul	97
24) Benzo(b)fluoranthene	22.800	252	4396	0.395	ng/ul	96
25) Benzo(k)fluoranthene	22.847	252	5378m	0.431	ng/ul	
26) Benzo(a)pyrene	23.376	252	4402	0.414	ng/ul#	90
27) Indeno(1,2,3-cd)pyrene	25.722	276	5686	0.390	ng/ul#	100
28) Dibenzo(a,h)anthracene	25.746	278	4422	0.383	ng/ul#	87
29) Benzo(g,h,i)perylene	26.380	276	5162	0.411	ng/ul#	92

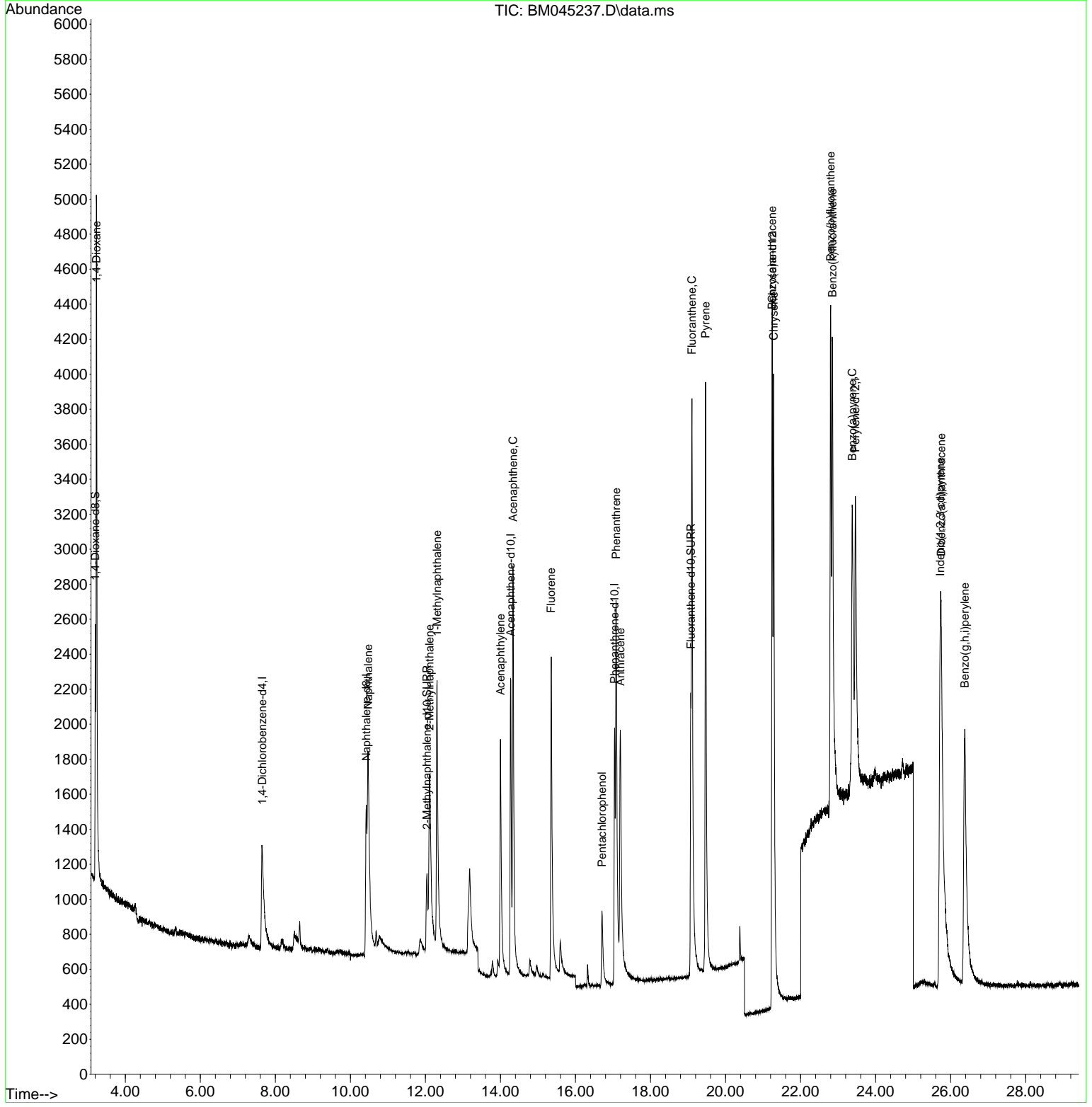
(#) = qualifier out of range (m) = manual integration (+) = signals summed

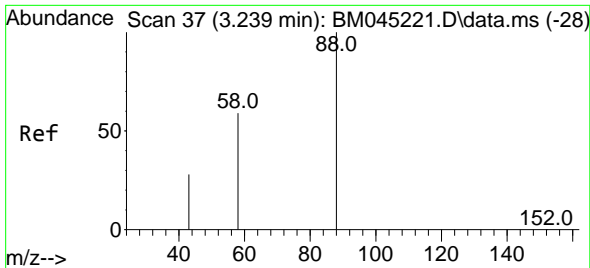
Data Path : Z:\svoasrv\HPCHEM1\BNA\_M\Data\BM041324\  
 Data File : BM045237.D  
 Acq On : 14 Apr 2024 11:04  
 Operator : MA/JU  
 Sample : PB160207BS  
 Misc :  
 ALS Vial : 35 Sample Multiplier: 1

**Instrument :**  
 BNA\_M  
**ClientSampleId :**  
 SLCS207

Quant Time: Apr 15 00:39:46 2024  
 Quant Method : Z:\svoasrv\HPCHEM1\BNA\_M\Methods\SFAM-EPA-SIM-BM040424.M  
 Quant Title : ASP BNA STANDARDS FOR 5 POINT CALIBRATION  
 QLast Update : Mon Apr 15 00:32:25 2024  
 Response via : Initial Calibration

**Manual Integrations**  
**APPROVED**  
 Reviewed By :Yogesh Patel 04/16/2024  
 Supervised By :mohammad ahmed 04/17/2024





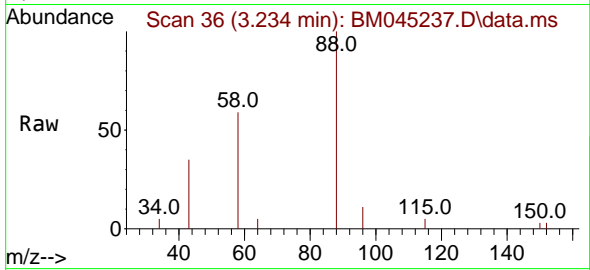
#2  
 1,4-Dioxane  
 Concen: 2.515 ng/u1  
 RT: 3.234 min Scan# 30  
 Delta R.T. -0.000 min  
 Lab File: BM045237.D  
 Acq: 14 Apr 2024 11:04

Instrument :

BNA\_M

ClientSampleId :

SLCS207



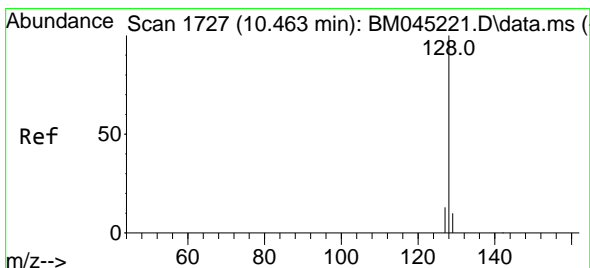
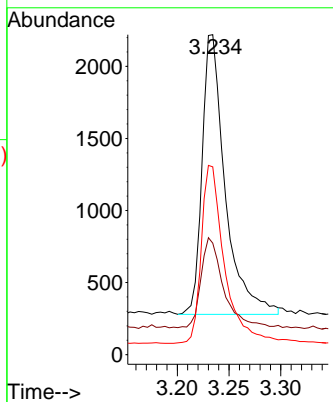
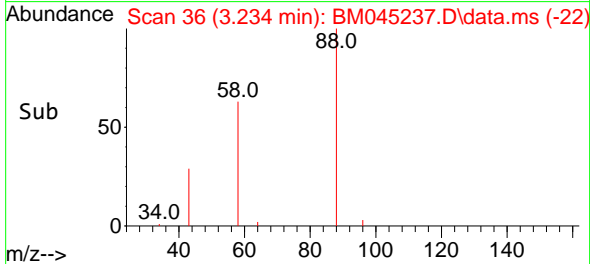
Tgt Ion: 88 Resp: 302  
 Ion Ratio Lower Upper  
 88 100  
 43 34.9 30.6 46.0  
 58 58.7 32.6 48.8

Manual Integrations

APPROVED

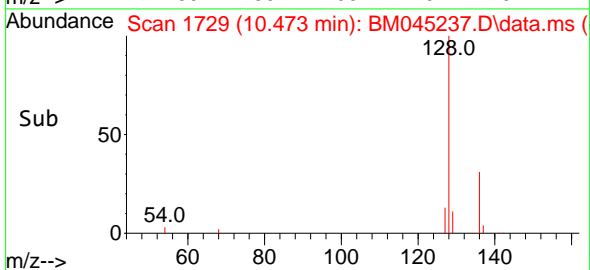
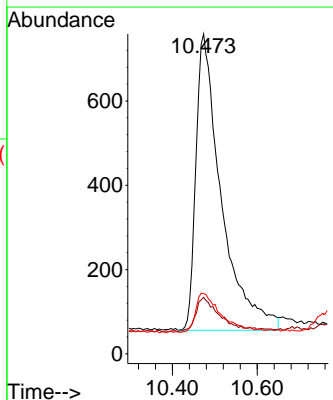
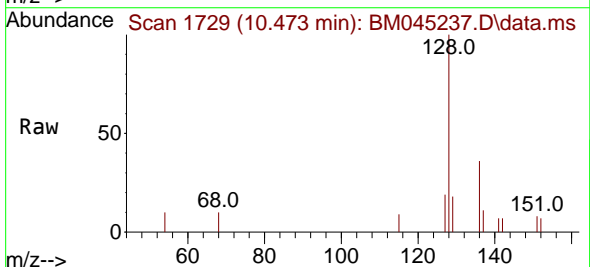
Reviewed By :Yogesh Patel 04/16/2024

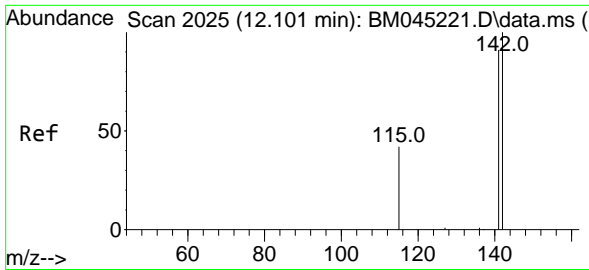
Supervised By :mohammad ahmed 04/17/2024



#5  
 Naphthalene  
 Concen: 0.386 ng/u1  
 RT: 10.473 min Scan# 1729  
 Delta R.T. 0.033 min  
 Lab File: BM045237.D  
 Acq: 14 Apr 2024 11:04

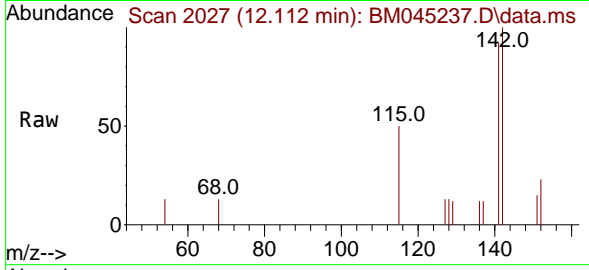
Tgt Ion:128 Resp: 2918  
 Ion Ratio Lower Upper  
 128 100  
 129 17.7 11.3 16.9#  
 127 18.8 11.9 17.9#





#7  
 2-Methylnaphthalene  
 Concen: 0.362 ng/u1  
 RT: 12.112 min Scan# 2027  
 Delta R.T. 0.038 min  
 Lab File: BM045237.D  
 Acq: 14 Apr 2024 11:04

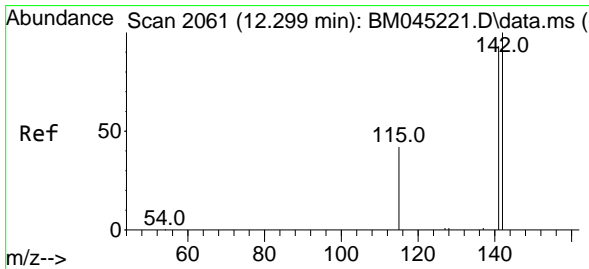
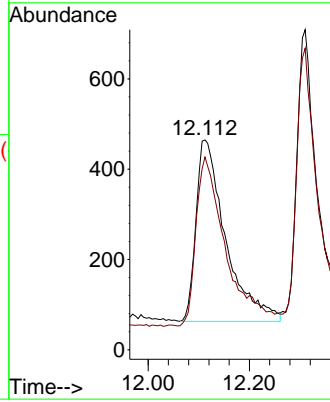
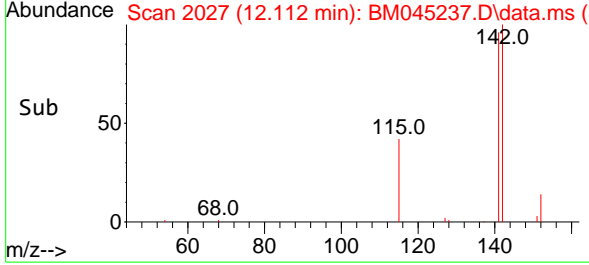
Instrument :  
 BNA\_M  
 ClientSampleId :  
 SLCS207



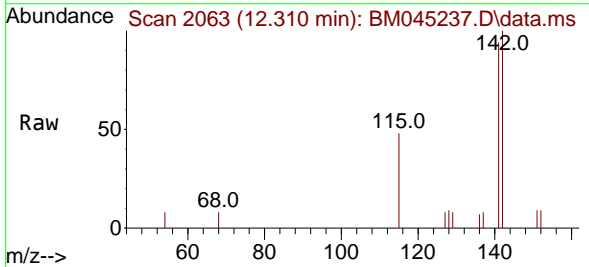
Tgt Ion:142 Resp: 163  
 Ion Ratio Lower Upper  
 142 100  
 141 94.6 73.8 110.8

Manual Integrations  
 APPROVED

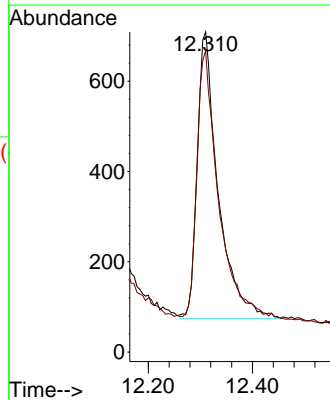
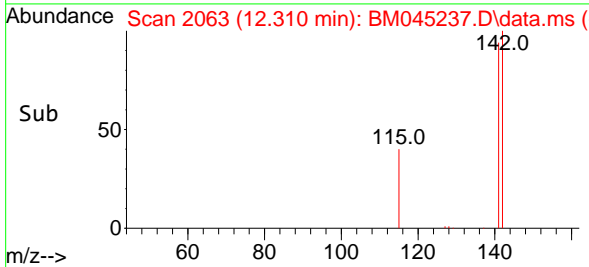
Reviewed By :Yogesh Patel 04/16/2024  
 Supervised By :mohammad ahmed 04/17/2024

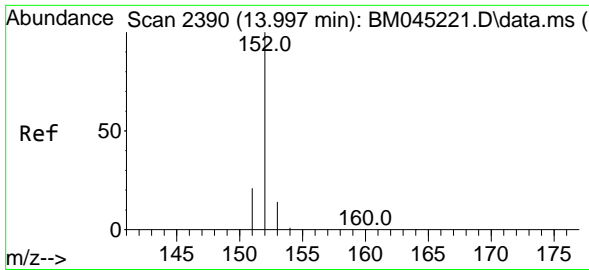


#8  
 1-Methylnaphthalene  
 Concen: 0.361 ng/u1  
 RT: 12.310 min Scan# 2063  
 Delta R.T. 0.022 min  
 Lab File: BM045237.D  
 Acq: 14 Apr 2024 11:04



Tgt Ion:142 Resp: 1780  
 Ion Ratio Lower Upper  
 142 100  
 141 94.8 74.2 111.2





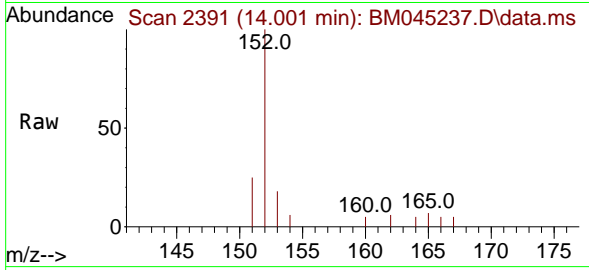
#10  
 Acenaphthylene  
 Concen: 0.401 ng/u1  
 RT: 14.001 min Scan# 2391  
 Delta R.T. 0.018 min  
 Lab File: BM045237.D  
 Acq: 14 Apr 2024 11:04

Instrument :

BNA\_M

ClientSampleId :

SLCS207



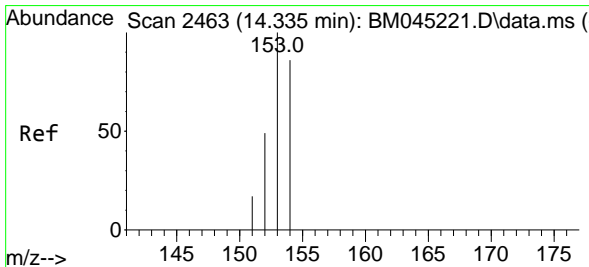
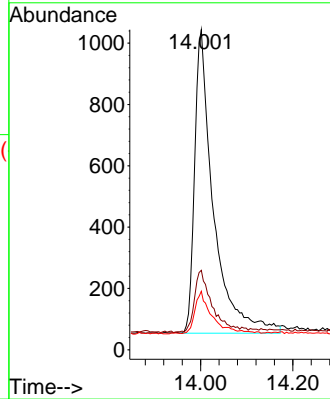
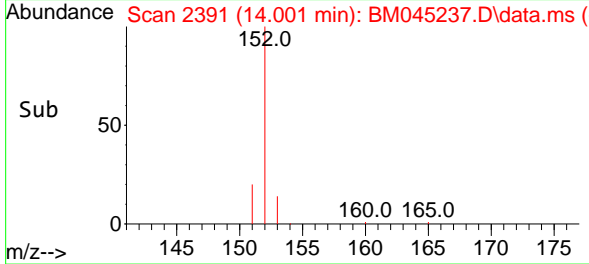
Tgt Ion:152 Resp: 279  
 Ion Ratio Lower Upper  
 152 100  
 151 24.8 17.0 25.4  
 153 18.3 11.9 17.9

Manual Integrations

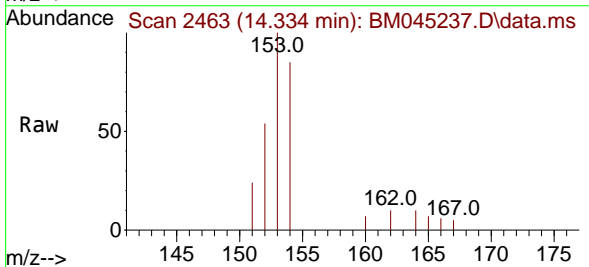
APPROVED

Reviewed By :Yogesh Patel 04/16/2024

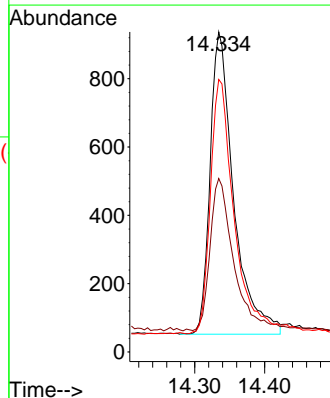
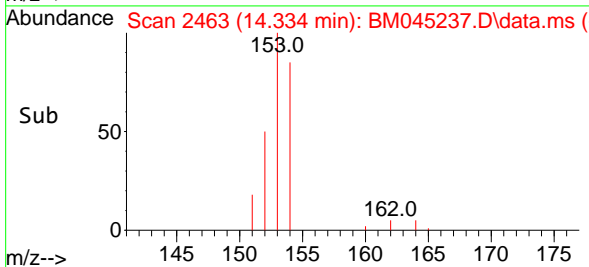
Supervised By :mohammad ahmed 04/17/2024

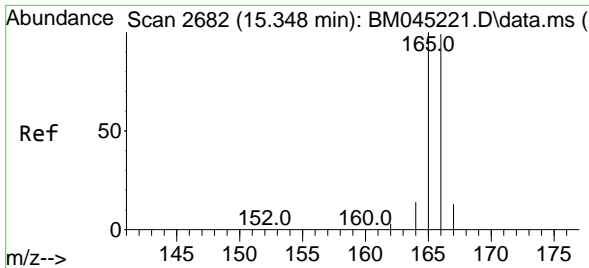


#11  
 Acenaphthene  
 Concen: 0.416 ng/u1  
 RT: 14.334 min Scan# 2463  
 Delta R.T. 0.008 min  
 Lab File: BM045237.D  
 Acq: 14 Apr 2024 11:04



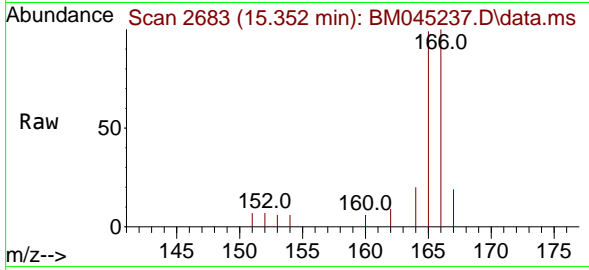
Tgt Ion:153 Resp: 2074  
 Ion Ratio Lower Upper  
 153 100  
 152 54.2 41.2 61.8  
 154 85.2 69.4 104.0





#12  
 Fluorene  
 Concen: 0.390 ng/u1  
 RT: 15.352 min Scan# 20  
 Delta R.T. 0.022 min  
 Lab File: BM045237.D  
 Acq: 14 Apr 2024 11:04

Instrument :  
 BNA\_M  
 ClientSampleId :  
 SLCS207

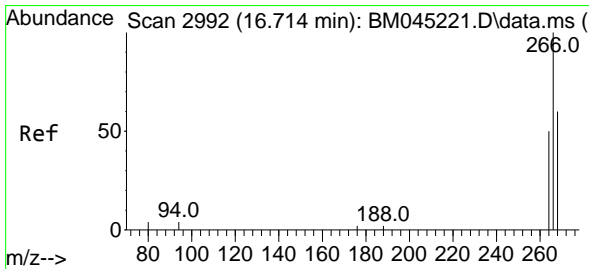
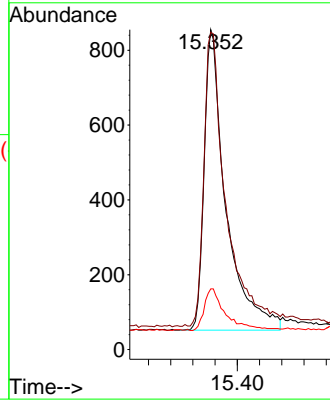
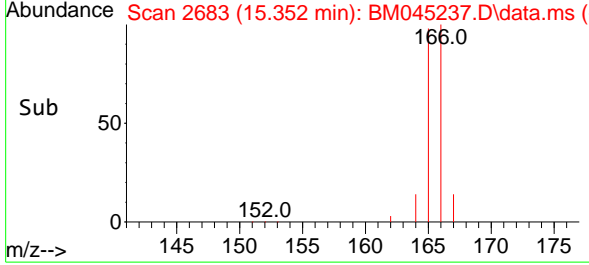


Tgt Ion:166 Resp: 217

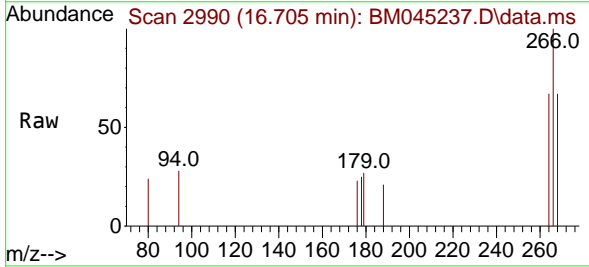
Ion	Ratio	Lower	Upper
166	100		
165	99.2	79.9	119.9
167	18.9	12.2	18.2

Manual Integrations  
 APPROVED

Reviewed By :Yogesh Patel 04/16/2024  
 Supervised By :mohammad ahmed 04/17/2024

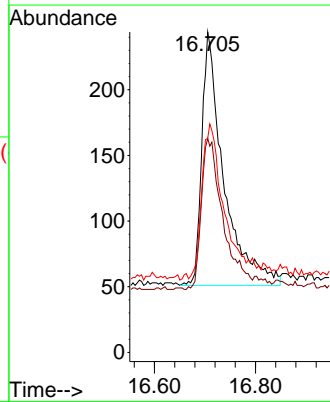
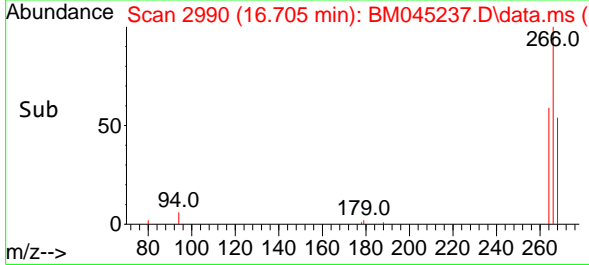


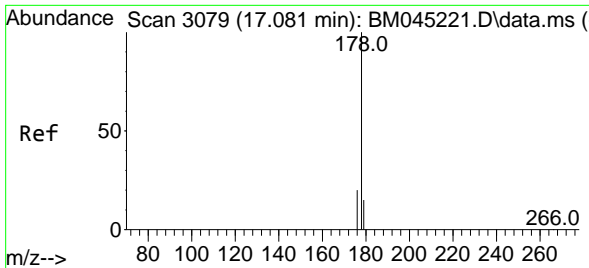
#14  
 Pentachlorophenol  
 Concen: 0.767 ng/u1  
 RT: 16.705 min Scan# 2990  
 Delta R.T. 0.008 min  
 Lab File: BM045237.D  
 Acq: 14 Apr 2024 11:04



Tgt Ion:266 Resp: 580

Ion	Ratio	Lower	Upper
266	100		
264	58.8	48.3	72.5
268	62.8	52.6	79.0





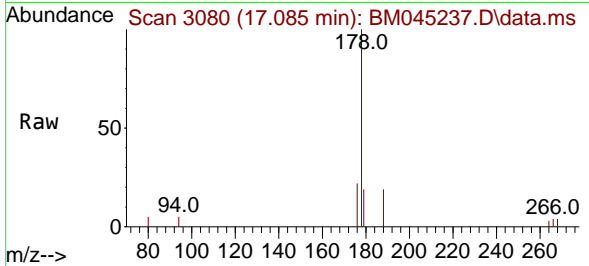
#15  
 Phenanthrene  
 Concen: 0.382 ng/u1  
 RT: 17.085 min Scan# 3079  
 Delta R.T. 0.012 min  
 Lab File: BM045237.D  
 Acq: 14 Apr 2024 11:04

Instrument :

BNA\_M

ClientSampleId :

SLCS207

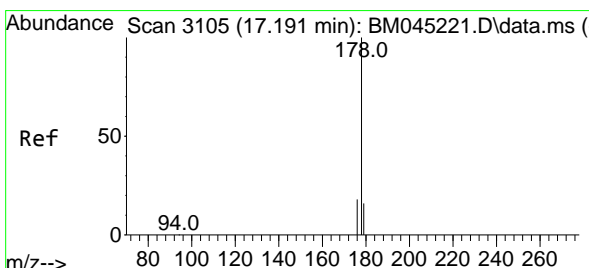
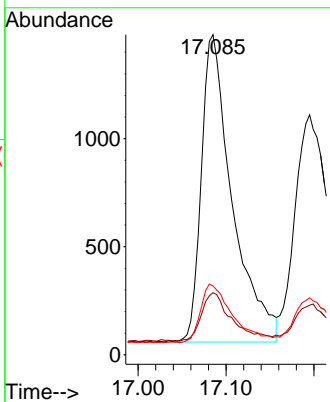
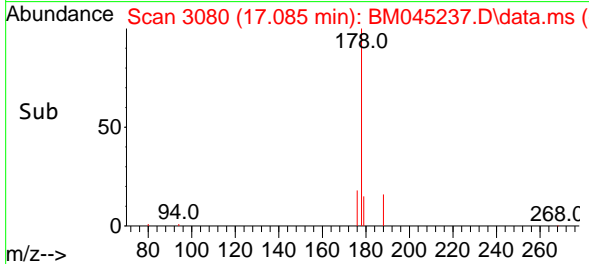


Tgt Ion:178 Resp: 3471  
 Ion Ratio Lower Upper  
 178 100  
 179 19.4 13.7 20.5  
 176 21.5 17.0 25.4

Manual Integrations

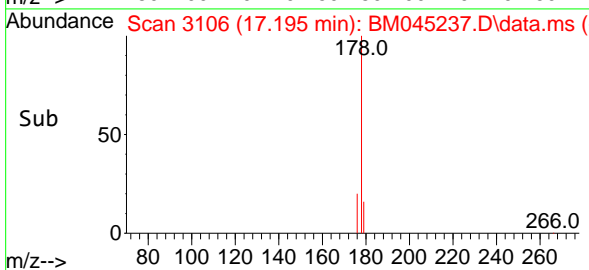
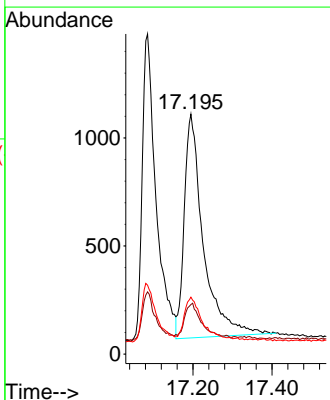
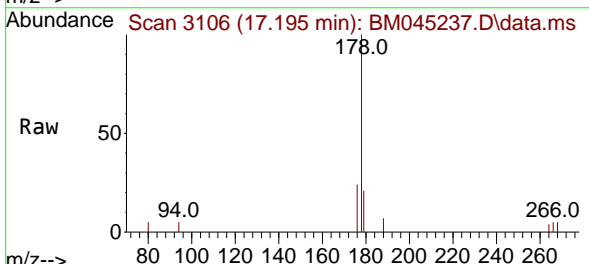
APPROVED

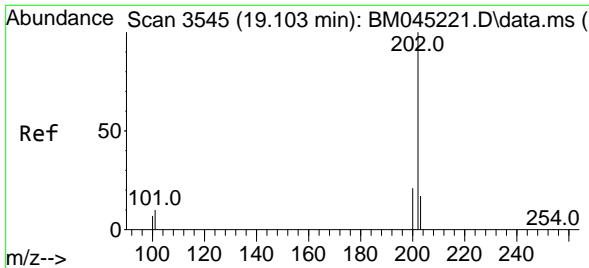
Reviewed By :Yogesh Patel 04/16/2024  
 Supervised By :mohammad ahmed 04/17/2024



#16  
 Anthracene  
 Concen: 0.387 ng/u1  
 RT: 17.195 min Scan# 3106  
 Delta R.T. 0.024 min  
 Lab File: BM045237.D  
 Acq: 14 Apr 2024 11:04

Tgt Ion:178 Resp: 3458  
 Ion Ratio Lower Upper  
 178 100  
 179 20.6 13.8 20.8  
 176 23.7 16.2 24.4





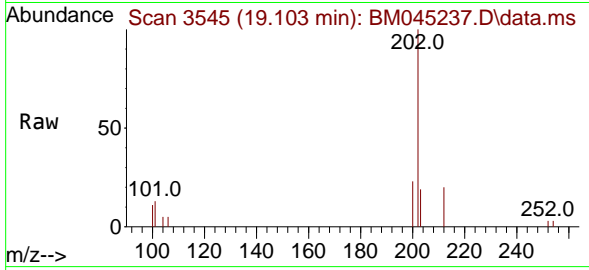
#19  
 Fluoranthene  
 Concen: 0.468 ng/u1  
 RT: 19.103 min Scan# 31  
 Delta R.T. 0.008 min  
 Lab File: BM045237.D  
 Acq: 14 Apr 2024 11:04

Instrument :

BNA\_M

ClientSampleId :

SLCS207



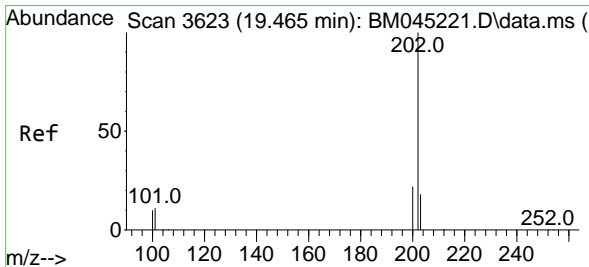
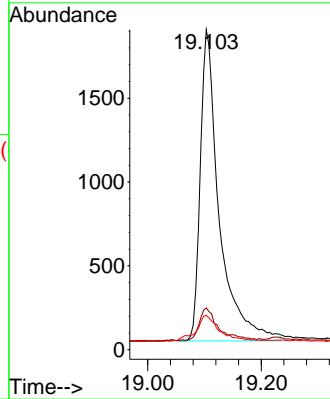
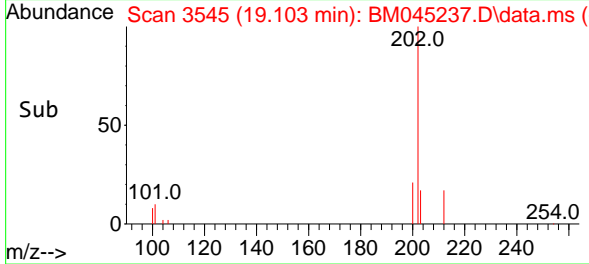
Tgt Ion:202 Resp: 429  
 Ion Ratio Lower Upper  
 202 100  
 101 13.0 8.8 13.2  
 100 10.7 7.0 10.4

Manual Integrations

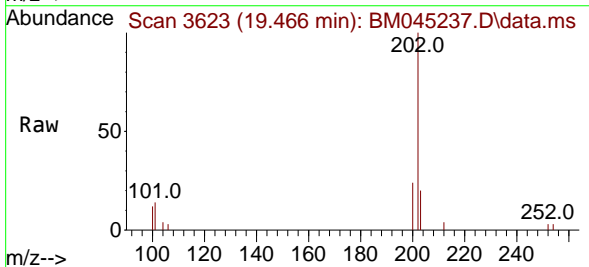
APPROVED

Reviewed By :Yogesh Patel 04/16/2024

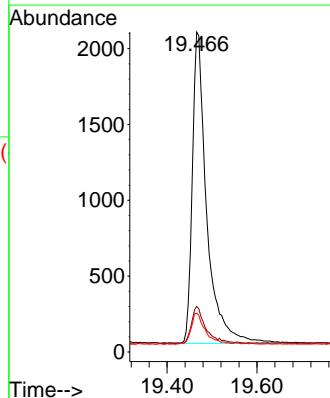
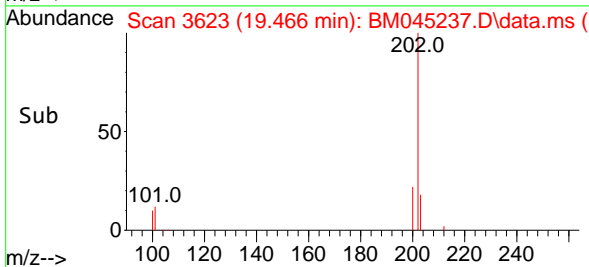
Supervised By :mohammad ahmed 04/17/2024



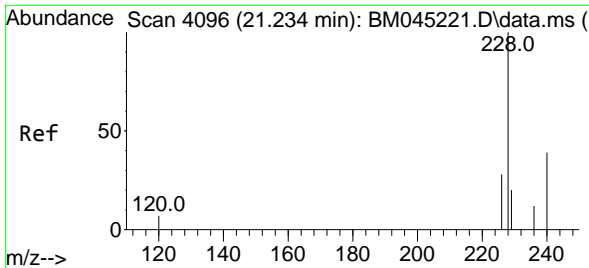
#20  
 Pyrene  
 Concen: 0.472 ng/u1  
 RT: 19.466 min Scan# 3623  
 Delta R.T. 0.004 min  
 Lab File: BM045237.D  
 Acq: 14 Apr 2024 11:04



Tgt Ion:202 Resp: 4572  
 Ion Ratio Lower Upper  
 202 100  
 101 14.3 9.8 14.6  
 100 12.1 8.1 12.1#

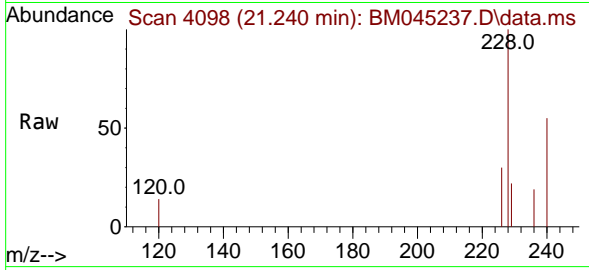






#21  
 Benzo(a)anthracene  
 Concen: 0.369 ng/u1  
 RT: 21.240 min Scan# 4096  
 Delta R.T. 0.012 min  
 Lab File: BM045237.D  
 Acq: 14 Apr 2024 11:04

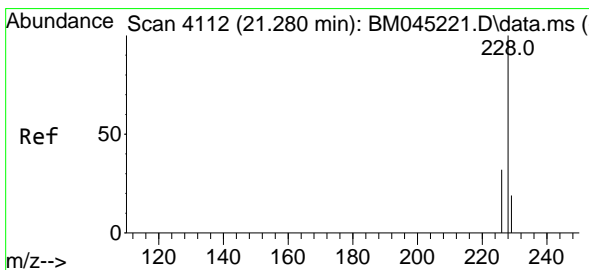
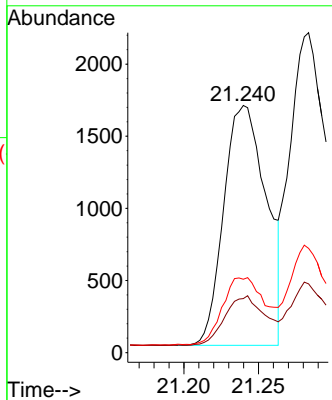
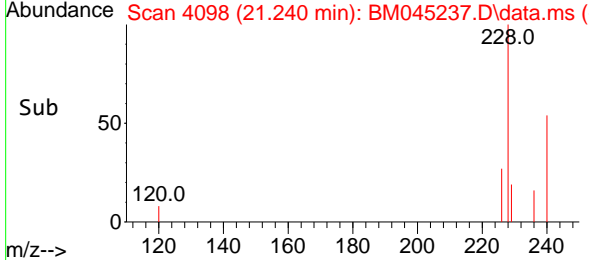
Instrument : BNA\_M  
 ClientSampleId : SLCS207



Tgt Ion:228 Resp: 3298  
 Ion Ratio Lower Upper  
 228 100  
 229 21.8 16.4 24.6  
 226 29.7 22.3 33.5

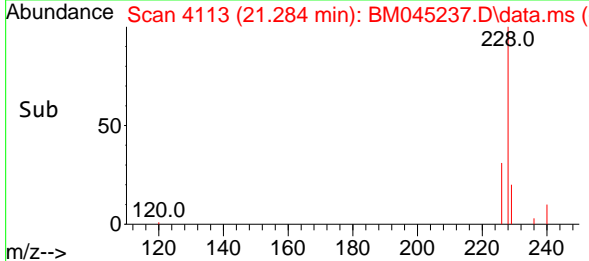
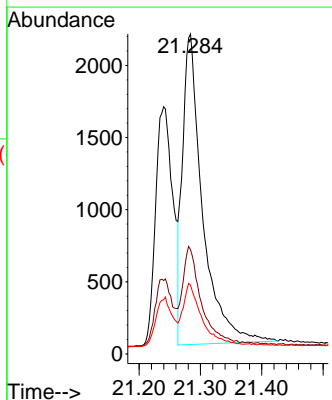
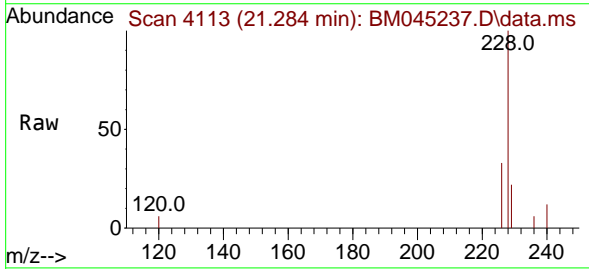
Manual Integrations  
 APPROVED

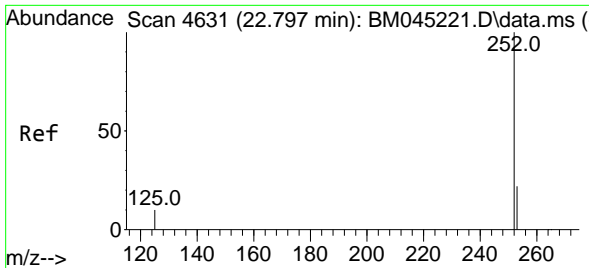
Reviewed By :Yogesh Patel 04/16/2024  
 Supervised By :mohammad ahmed 04/17/2024



#22  
 Chrysene  
 Concen: 0.437 ng/u1  
 RT: 21.284 min Scan# 4113  
 Delta R.T. 0.007 min  
 Lab File: BM045237.D  
 Acq: 14 Apr 2024 11:04

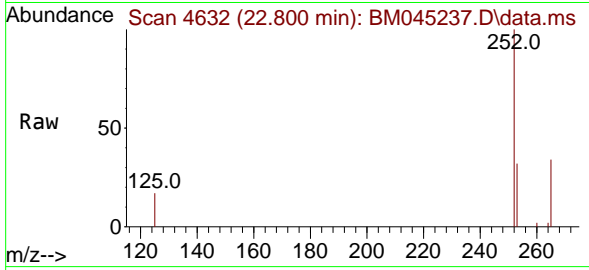
Tgt Ion:228 Resp: 4874  
 Ion Ratio Lower Upper  
 228 100  
 226 32.6 24.9 37.3  
 229 21.5 15.9 23.9





#24  
 Benzo(b)fluoranthene  
 Concen: 0.395 ng/ul  
 RT: 22.800 min Scan# 4632  
 Delta R.T. 0.007 min  
 Lab File: BM045237.D  
 Acq: 14 Apr 2024 11:04

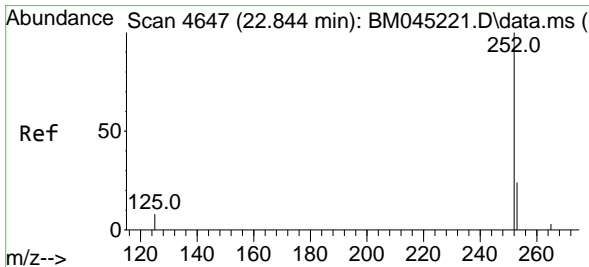
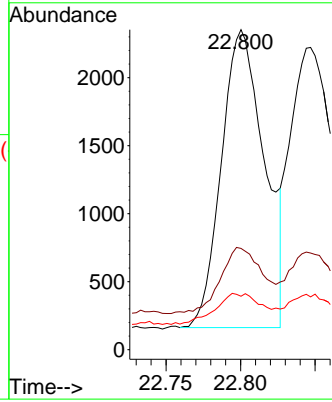
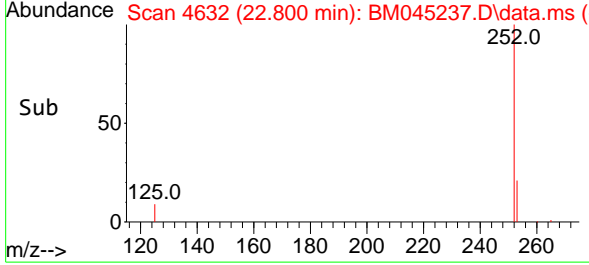
Instrument :  
 BNA\_M  
 ClientSampleId :  
 SLCS207



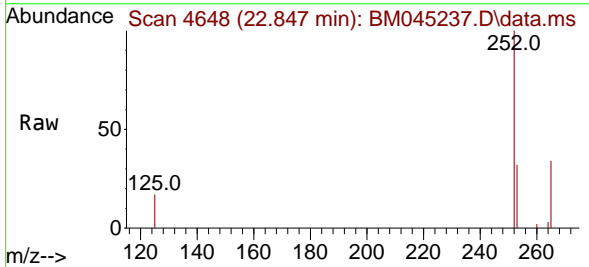
Tgt Ion:252 Resp: 4390  
 Ion Ratio Lower Upper  
 252 100  
 253 31.6 0.0 56.4  
 125 16.7 0.0 33.4

Manual Integrations  
 APPROVED

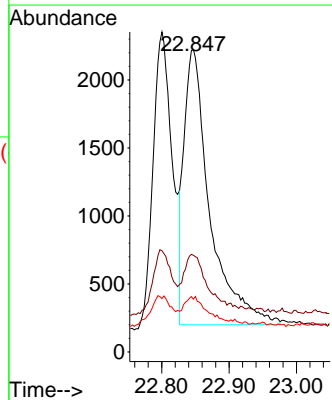
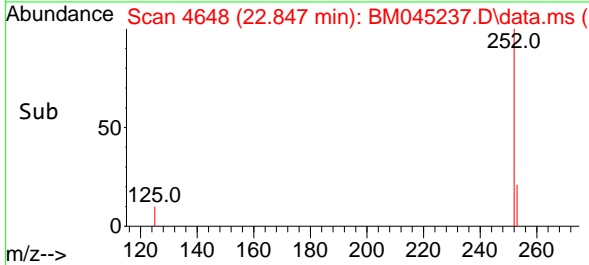
Reviewed By :Yogesh Patel 04/16/2024  
 Supervised By :mohammad ahmed 04/17/2024

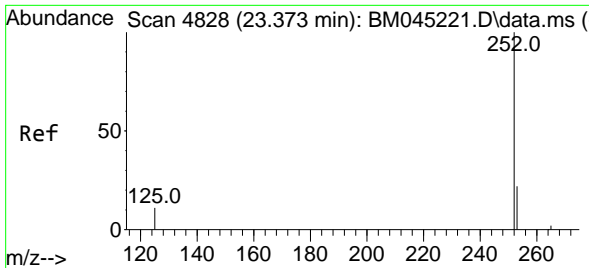


#25  
 Benzo(k)fluoranthene  
 Concen: 0.431 ng/ul m  
 RT: 22.847 min Scan# 4648  
 Delta R.T. 0.007 min  
 Lab File: BM045237.D  
 Acq: 14 Apr 2024 11:04



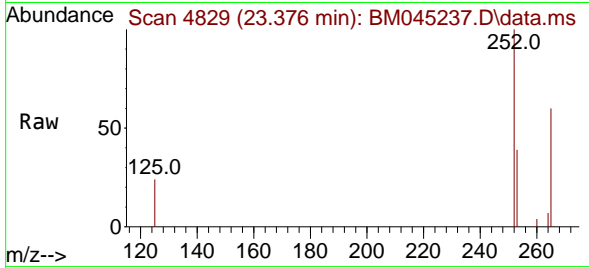
Tgt Ion:252 Resp: 5378  
 Ion Ratio Lower Upper  
 252 100  
 253 32.0 22.3 33.5  
 125 17.5 11.6 17.4#





#26  
 Benzo(a)pyrene  
 Concen: 0.414 ng/u1  
 RT: 23.376 min Scan# 4828  
 Delta R.T. 0.012 min  
 Lab File: BM045237.D  
 Acq: 14 Apr 2024 11:04

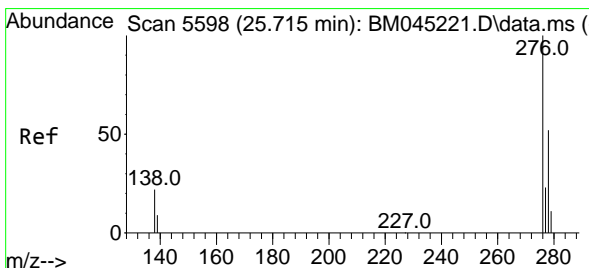
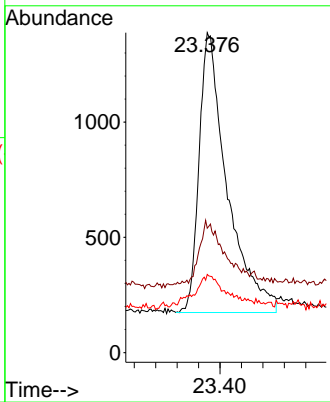
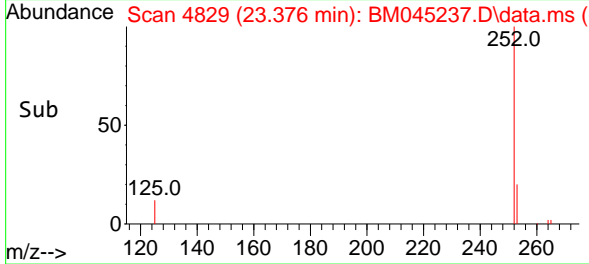
Instrument :  
 BNA\_M  
 ClientSampleId :  
 SLCS207



Tgt Ion:252 Resp: 440  
 Ion Ratio Lower Upper  
 252 100  
 253 38.9 24.6 37.0#  
 125 24.4 18.2 27.4#

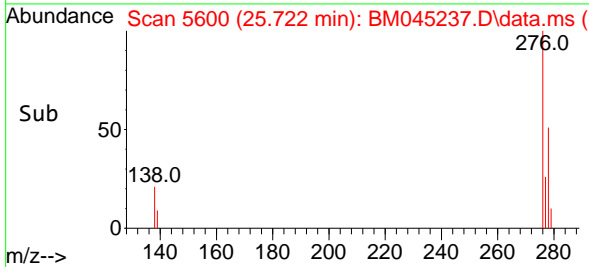
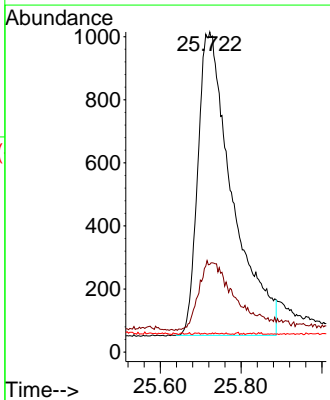
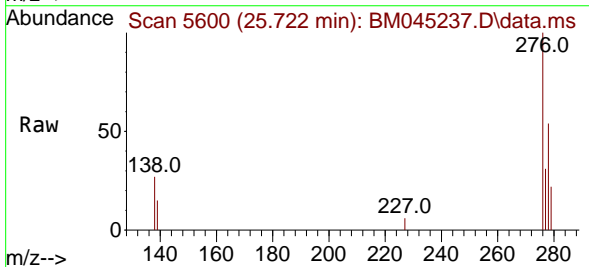
Manual Integrations  
 APPROVED

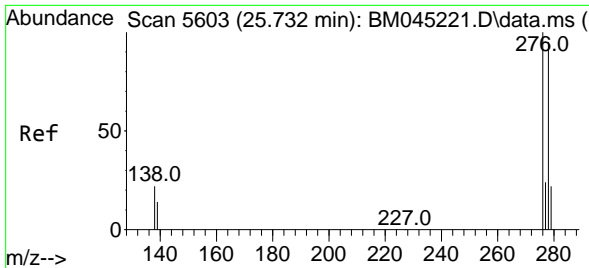
Reviewed By :Yogesh Patel 04/16/2024  
 Supervised By :mohammad ahmed 04/17/2024



#27  
 Indeno(1,2,3-cd)pyrene  
 Concen: 0.390 ng/u1  
 RT: 25.722 min Scan# 5600  
 Delta R.T. 0.028 min  
 Lab File: BM045237.D  
 Acq: 14 Apr 2024 11:04

Tgt Ion:276 Resp: 5686  
 Ion Ratio Lower Upper  
 276 100  
 138 24.4 0.0 0.0#  
 227 0.1 0.1 0.1#





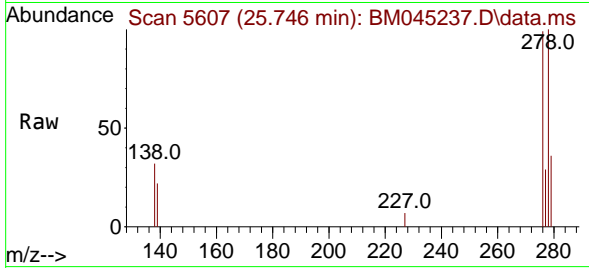
#28  
 Dibenzo(a,h)anthracene  
 Concen: 0.383 ng/ul  
 RT: 25.746 min Scan# 5607  
 Delta R.T. 0.031 min  
 Lab File: BM045237.D  
 Acq: 14 Apr 2024 11:04

Instrument :

BNA\_M

ClientSampleId :

SLCS207



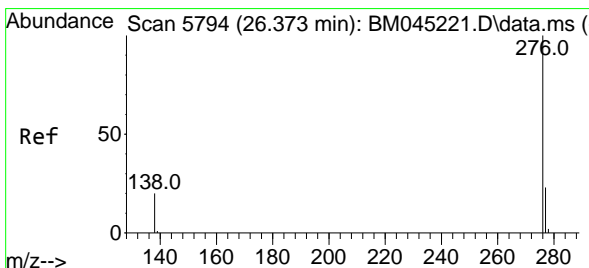
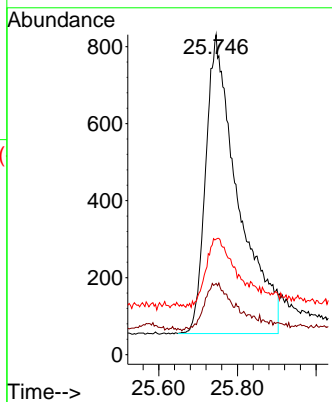
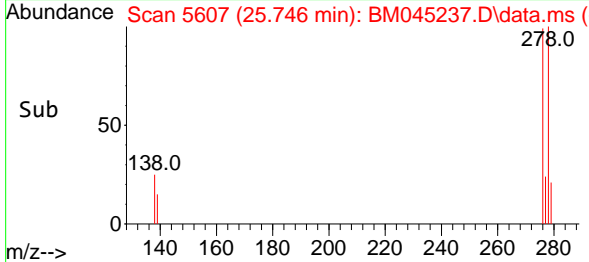
Tgt Ion:278 Resp: 442  
 Ion Ratio Lower Upper  
 278 100  
 139 22.3 13.6 20.4  
 279 36.1 23.0 34.4

Manual Integrations

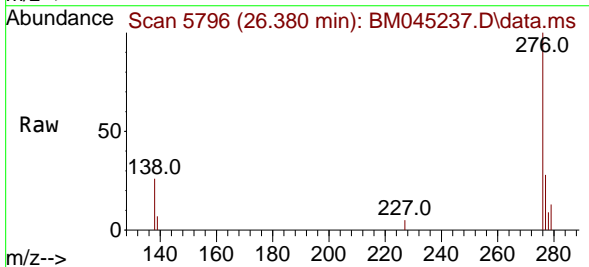
APPROVED

Reviewed By :Yogesh Patel 04/16/2024

Supervised By :mohammad ahmed 04/17/2024



#29  
 Benzo(g,h,i)perylene  
 Concen: 0.411 ng/ul  
 RT: 26.380 min Scan# 5796  
 Delta R.T. 0.014 min  
 Lab File: BM045237.D  
 Acq: 14 Apr 2024 11:04



Tgt Ion:276 Resp: 5162  
 Ion Ratio Lower Upper  
 276 100  
 138 25.9 16.8 25.2  
 277 28.2 20.3 30.5

