

Data Path : Z:\HPCHEM1\BNA\_M\DATA\BM041415\  
 Data File : BM000984.D  
 Acq On : 14 Apr 2015 15:25  
 Operator : TP/IZ  
 Sample : G1858-08  
 Misc :  
 ALS Vial : 12 Sample Multiplier: 1

Instrument :  
 BNA\_M  
 ClientSampleId :  
 P001-SD008-0006-01

Quant Time: Apr 15 17:07:43 2015  
 Quant Method : Z:\HPCHEM1\BNA\_M\METHODS\SOM01.2-EPA-BM041415.M  
 Quant Title : SVOA CALIBRATION  
 QLast Update : Wed Apr 15 06:02:42 2015  
 Response via : Initial Calibration

Internal Standards	R.T.	QIon	Response	Conc	Units	Dev(Min)
1) 1,4-Dichlorobenzene-d4	7.60	152	366741	20.00	ng/ul	0.00
18) Naphthalene-d8	10.38	136	1522420	20.00	ng/ul	0.00
35) Acenaphthene-d10	14.26	164	848873	20.00	ng/ul	0.00
61) Phenanthrene-d10	17.00	188	1827530	20.00	ng/ul	0.00
75) Chrysene-d12	21.20	240	1905667	20.00	ng/ul	0.00
83) Perylene-d12	23.39	264	1850353	20.00	ng/ul	0.00

## System Monitoring Compounds

3) 1,4-Dioxane-d8	0.00	96	0d	0.00	ng/uL	
5) Phenol-d5	6.78	99	444282	16.11	ng/ul	0.00
7) Bis-(2-Chloroethyl)ether-d	6.94	67	296163	17.20	ng/ul	0.00
9) 2-Chlorophenol-d4	7.13	132	334808	14.71	ng/ul	0.00
13) 4-Methylphenol-d8	8.31	113	411436	19.16	ng/ul	0.00
19) Nitrobenzene-d5	8.76	128	169569	16.83	ng/ul	0.00
22) 2-Nitrophenol-d4	9.47	143	175870	16.09	ng/ul	0.00
26) 2,4-Dichlorophenol-d3	10.01	165	382370	17.56	ng/ul	0.00
29) 4-Chloroaniline-d4	10.53	131	492807	18.89	ng/ul	0.00
43) Dimethylphthalate-d6	13.67	166	1572286	28.29	ng/ul	0.00
46) Acenaphthylene-d8	13.94	160	1657607	20.61	ng/ul	0.00
51) 4-Nitrophenol-d4	14.47	143	163969	16.83	ng/ul	0.00
57) Fluorene-d10	15.26	176	1218593	21.59	ng/ul	0.00
62) 4,6-Dinitro-2-methylphenol	15.38	200	114196	11.69	ng/ul	0.00
70) Anthracene-d10	17.10	188	1866430	22.36	ng/ul	0.00
76) Pyrene-d10	19.40	212	1828818	21.26	ng/ul	0.00
87) Benzo(a)pyrene-d12	23.24	264	1558289	19.25	ng/ul	0.00

## Target Compounds

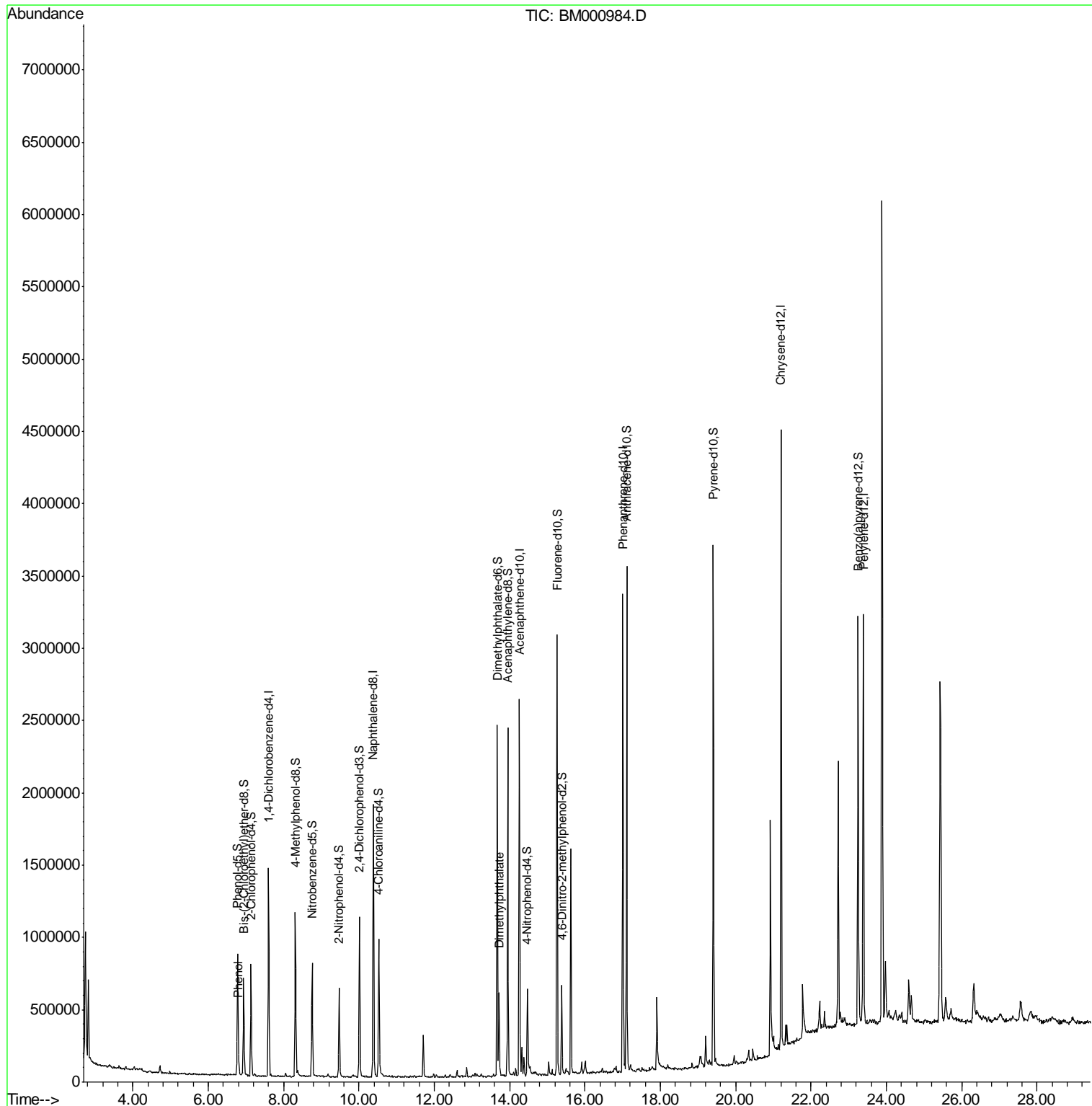
Target Compounds	R.T.	QIon	Response	Conc	Units	Qvalue
6) Phenol	6.80	94	47703	1.59	ng/ul	93
44) Dimethylphthalate	13.72	163	362174	5.69	ng/ul	99

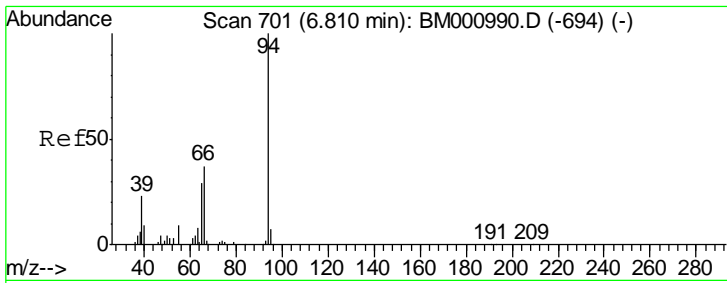
(#) = qualifier out of range (m) = manual integration (+) = signals summed

Data Path : Z:\HPCHEM1\BNA\_M\DATA\BM041415\  
 Data File : BM000984.D  
 Acq On : 14 Apr 2015 15:25  
 Operator : TP/IZ  
 Sample : G1858-08  
 Misc :  
 ALS Vial : 12 Sample Multiplier: 1

Instrument :  
 BNA\_M  
 ClientSampleId :  
 P001-SD008-0006-01

Quant Time: Apr 15 17:07:43 2015  
 Quant Method : Z:\HPCHEM1\BNA\_M\METHODS\SOM01.2-EPA-BM041415.M  
 Quant Title : SVOA CALIBRATION  
 QLast Update : Wed Apr 15 06:02:42 2015  
 Response via : Initial Calibration

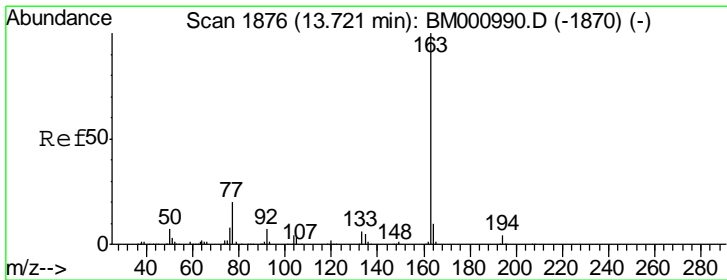
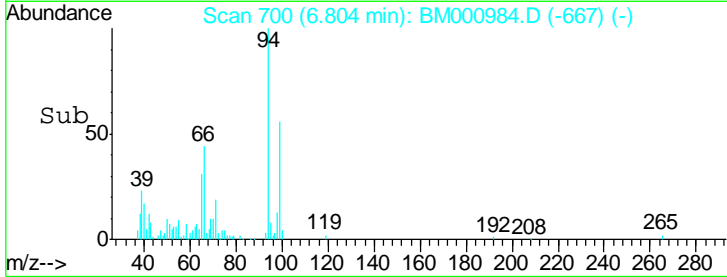
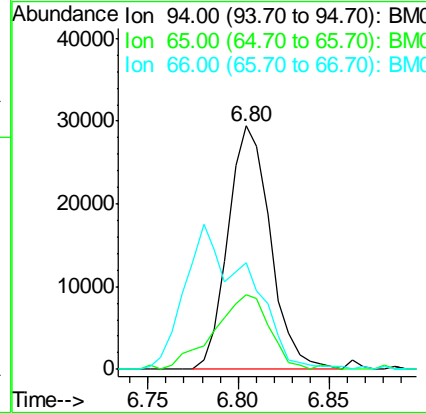
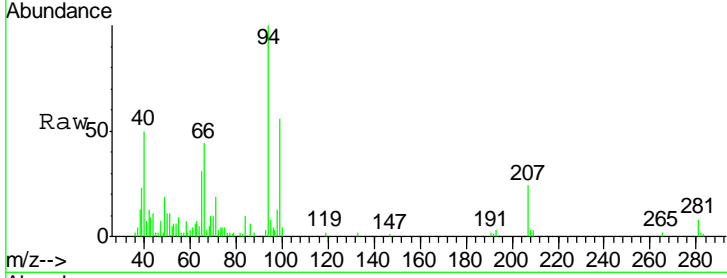




#6  
 Phenol  
 Concen: 1.59 ng/ul  
 RT: 6.80 min Scan# 700  
 Delta R.T. -0.01 min  
 Lab File: BM000984.D  
 Acq: 14 Apr 2015 15:25

Instrument :  
 BNA\_M  
 ClientSampleID :  
 P001-SD008-0006-01

Tgt Ion	Resp	Lower	Upper
94	47703		
65	30.9	23.5	35.3
66	44.0	30.6	45.8



#44  
 Dimethylphthalate  
 Concen: 5.69 ng/ul  
 RT: 13.72 min Scan# 1875  
 Delta R.T. -0.01 min  
 Lab File: BM000984.D  
 Acq: 14 Apr 2015 15:25

Tgt Ion	Resp	Lower	Upper
163	362174		
194	3.6	3.3	4.9
164	10.8	8.6	12.8

