

Data Path : Z:\HPCHEM1\BNA_M\DATA\BM041415\
 Data File : BM000996.D
 Acq On : 14 Apr 2015 22:36
 Operator : TP/IZ
 Sample : G1830-04
 Misc :
 ALS Vial : 23 Sample Multiplier: 1

Instrument :
 BNA_M
 ClientSampleId :
 P001-SS004-0006-01

Quant Time: Apr 15 17:28:10 2015
 Quant Method : Z:\HPCHEM1\BNA_M\METHODS\SOM01.2-EPA-BM041415.M
 Quant Title : SVOA CALIBRATION
 QLast Update : Wed Apr 15 06:41:33 2015
 Response via : Initial Calibration

Internal Standards	R.T.	QIon	Response	Conc	Units	Dev(Min)
1) 1,4-Dichlorobenzene-d4	7.60	152	501161	20.00	ng/ul	0.00
18) Naphthalene-d8	10.38	136	2009556	20.00	ng/ul	0.00
35) Acenaphthene-d10	14.26	164	1048033	20.00	ng/ul	0.00
61) Phenanthrene-d10	17.00	188	2174959	20.00	ng/ul	0.00
75) Chrysene-d12	21.20	240	2189061	20.00	ng/ul	0.00
83) Perylene-d12	23.38	264	2168517	20.00	ng/ul	0.00

System Monitoring Compounds

3) 1,4-Dioxane-d8	0.00	96	0d	0.00	ng/uL	
5) Phenol-d5	6.78	99	810810	21.52	ng/ul	0.00
7) Bis-(2-Chloroethyl)ether-d	6.94	67	510228	21.69	ng/ul	0.00
9) 2-Chlorophenol-d4	7.13	132	665193	21.39	ng/ul	0.00
13) 4-Methylphenol-d8	8.31	113	636794	21.70	ng/ul	0.00
19) Nitrobenzene-d5	8.76	128	308196	23.17	ng/ul	0.00
22) 2-Nitrophenol-d4	9.47	143	340197	23.59	ng/ul	0.00
26) 2,4-Dichlorophenol-d3	10.01	165	602438	20.95	ng/ul	0.00
29) 4-Chloroaniline-d4	10.53	131	838675	24.36	ng/ul	0.00
43) Dimethylphthalate-d6	13.67	166	1755744	25.59	ng/ul	0.00
46) Acenaphthylene-d8	13.95	160	2193094	22.08	ng/ul	0.00
51) 4-Nitrophenol-d4	14.47	143	224828	18.69	ng/ul	0.00
57) Fluorene-d10	15.26	176	1449736	20.81	ng/ul	0.00
62) 4,6-Dinitro-2-methylphenol	15.38	200	171848	14.79	ng/ul	0.00
70) Anthracene-d10	17.10	188	2078549	20.92	ng/ul	0.00
76) Pyrene-d10	19.40	212	2148812	21.74	ng/ul	0.00
87) Benzo(a)pyrene-d12	23.24	264	1867406	19.69	ng/ul	-0.01

Target Compounds

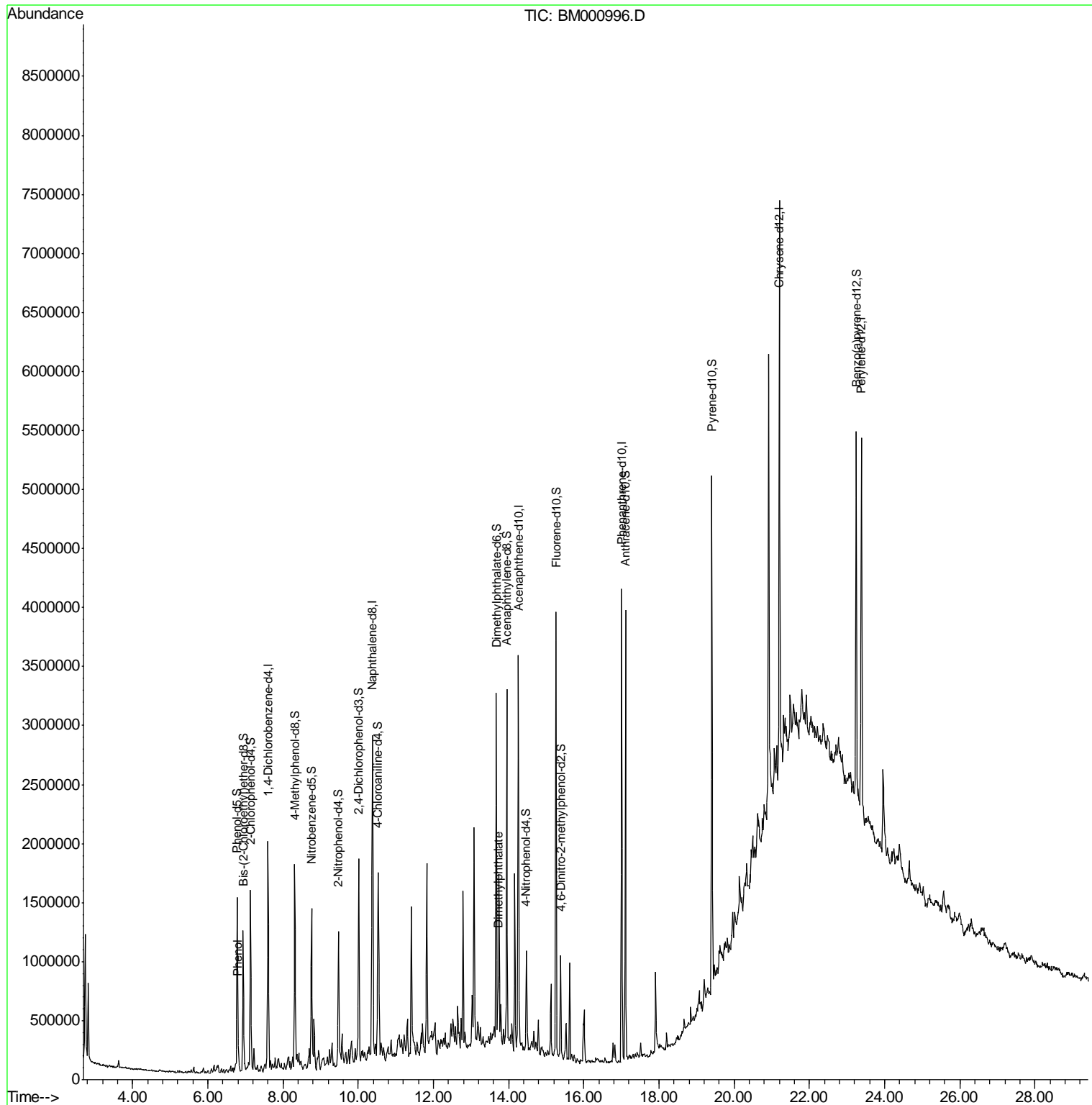
					Qvalue
6) Phenol	6.80	94	97315	2.37	ng/ul 94
44) Dimethylphthalate	13.72	163	219083	2.79	ng/ul 98

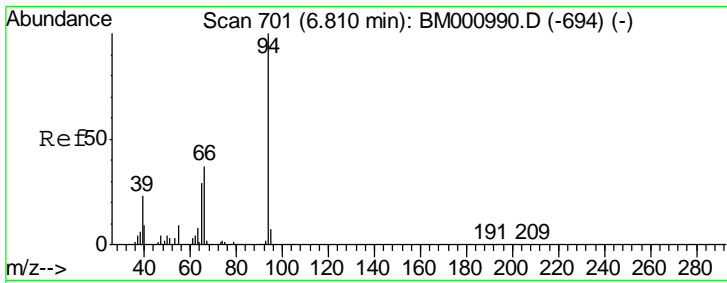
(#) = qualifier out of range (m) = manual integration (+) = signals summed

Data Path : Z:\HPCHEM1\BNA_M\DATA\BM041415\
 Data File : BM000996.D
 Acq On : 14 Apr 2015 22:36
 Operator : TP/IZ
 Sample : G1830-04
 Misc :
 ALS Vial : 23 Sample Multiplier: 1

Instrument :
 BNA_M
 ClientSampleId :
 P001-SS004-0006-01

Quant Time: Apr 15 17:28:10 2015
 Quant Method : Z:\HPCHEM1\BNA_M\METHODS\SOM01.2-EPA-BM041415.M
 Quant Title : SVOA CALIBRATION
 QLast Update : Wed Apr 15 06:41:33 2015
 Response via : Initial Calibration

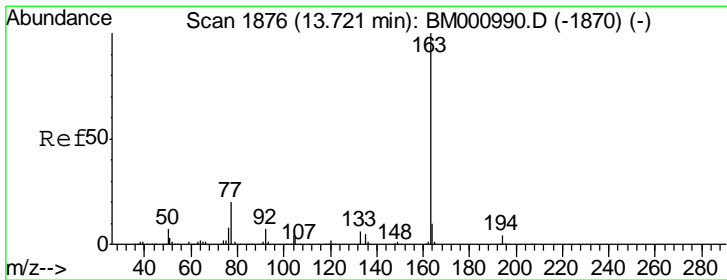
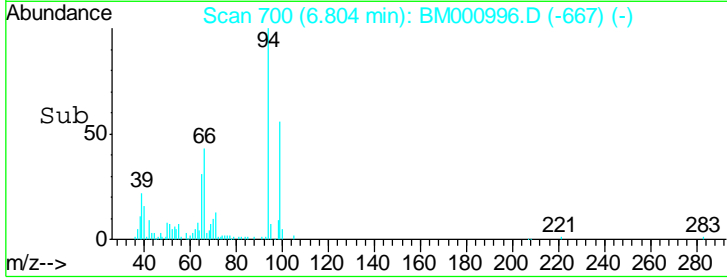
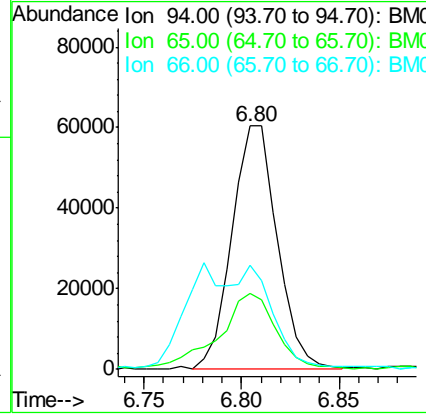
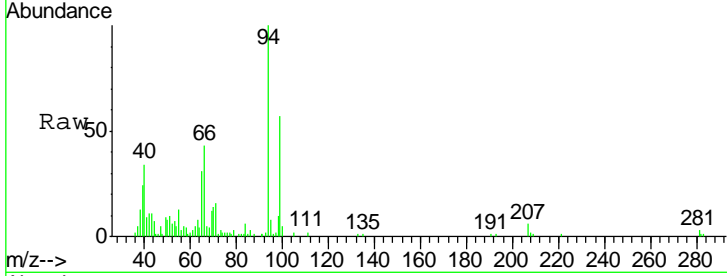




#6
 Phenol
 Concen: 2.37 ng/ul
 RT: 6.80 min Scan# 700
 Delta R.T. -0.01 min
 Lab File: BM000996.D
 Acq: 14 Apr 2015 22:36

Instrument :
 BNA_M
 ClientSampleId :
 P001-SS004-0006-01

Tgt Ion	Resp	Lower	Upper
94	97315		
65	31.3	23.5	35.3
66	42.7	30.6	45.8



#44
 Dimethylphthalate
 Concen: 2.79 ng/ul
 RT: 13.72 min Scan# 1875
 Delta R.T. -0.01 min
 Lab File: BM000996.D
 Acq: 14 Apr 2015 22:36

Tgt Ion	Resp	Lower	Upper
163	219083		
194	4.0	3.3	4.9
164	9.5	8.6	12.8

