

Data Path : Z:\svoasrv\HPCHEM1\BNA\_M\Data\BM041422\  
 Data File : BM034689.D  
 Acq On : 15 Apr 2022 04:15  
 Operator : CG/JU  
 Sample : N2316-19  
 Misc :  
 ALS Vial : 31 Sample Multiplier: 1

Instrument :  
 BNA\_M  
 ClientSampleId :  
 ETNR7

Integration Parameters: LSCINT.P

Integrator: RTE  
 Smoothing : OFF Filtering: 5  
 Sampling : 1 Min Area: 0.1 % of largest Peak  
 Start Thrs: 0.2 Max Peaks: 100  
 Stop Thrs : 0 Peak Location: TOP

If leading or trailing edge < 100 prefer < Baseline drop else tangent >  
 Peak separation: 5

Method : Z:\svoasrv\HPCHEM1\BNA\_M\Methods\SFAM-EPA-BM040922.M  
 Title : SVOA CALIBRATION

Signal : TIC: BM034689.D\data.ms

peak #	R.T. min	first scan	max scan	last scan	PK TY	peak height	corr. area	corr. % max.	% of total
1	3.243	32	35	41	rVB	33581	40932	0.90%	0.132%
2	3.666	104	107	123	rBV	330429	516301	11.36%	1.668%
3	4.007	162	165	171	rVB3	12585	18700	0.41%	0.060%
4	5.154	356	360	365	rVB2	17411	24100	0.53%	0.078%
5	7.025	672	678	698	rBV	378908	690176	15.19%	2.230%
6	7.189	700	706	721	rVB	343893	561923	12.37%	1.815%
7	7.389	734	740	755	rBV	440030	738335	16.25%	2.385%
8	7.860	814	820	829	rBV	473840	771993	16.99%	2.494%
9	7.936	829	833	841	rVB3	12030	24215	0.53%	0.078%
10	8.572	934	941	954	rBV	488616	866170	19.06%	2.798%
11	9.025	1011	1018	1031	rBV	402125	707042	15.56%	2.284%
12	9.201	1044	1048	1050	rBV4	3762	4950	0.11%	0.016%
13	9.466	1089	1093	1098	rVB	13973	21914	0.48%	0.071%
14	9.748	1134	1141	1157	rBV	316001	597330	13.15%	1.930%
15	10.289	1227	1233	1250	rBV	428566	834773	18.37%	2.697%
16	10.672	1291	1298	1308	rBV	638121	1103035	24.27%	3.563%
17	10.807	1314	1321	1348	rBV	295942	737034	16.22%	2.381%
18	12.107	1539	1542	1551	rVB6	8582	16991	0.37%	0.055%
19	12.277	1566	1571	1577	rBV7	4127	11540	0.25%	0.037%
20	12.918	1677	1680	1686	rVB6	4281	7026	0.15%	0.023%
21	13.013	1689	1696	1698	rVV6	3458	5240	0.12%	0.017%
22	13.054	1698	1703	1711	rVB8	5397	11210	0.25%	0.036%
23	13.342	1747	1752	1760	rVB	21207	32534	0.72%	0.105%
24	13.442	1766	1769	1774	rBV6	9865	12660	0.28%	0.041%
25	13.736	1808	1819	1824	rBV10	3530	9129	0.20%	0.029%
26	13.918	1844	1850	1861	rBV	905598	1309149	28.81%	4.229%
27	14.201	1888	1898	1911	rBV	1030897	1543817	33.98%	4.987%
28	14.301	1911	1915	1920	rVB4	8369	13806	0.30%	0.045%
29	14.418	1931	1935	1941	rVB2	7660	11237	0.25%	0.036%
30	14.507	1943	1950	1961	rBV	944592	1400743	30.83%	4.525%
31	14.724	1981	1987	1999	rBV4	45461	172238	3.79%	0.556%
32	15.054	2040	2043	2049	rVB5	3758	5635	0.12%	0.018%
33	15.365	2093	2096	2100	rBV4	3606	5175	0.11%	0.017%
34	15.501	2113	2119	2133	rBV	1284982	1878978	41.35%	6.070%
35	15.618	2134	2139	2151	rVV	231577	372291	8.19%	1.203%
36	15.748	2156	2161	2170	rVB4	15509	29227	0.64%	0.094%

Data Path : Z:\svoasrv\HPCHEM1\BNA\_M\Data\BM041422\  
 Data File : BM034689.D  
 Acq On : 15 Apr 2022 04:15  
 Operator : CG/JU  
 Sample : N2316-19  
 Misc :  
 ALS Vial : 31 Sample Multiplier: 1

Instrument :  
 BNA\_M  
 ClientSampleId :  
 ETNR7

Integration Parameters: LSCINT.P  
 Integrator: RTE  
 Smoothing : OFF Filtering: 5  
 Sampling : 1 Min Area: 0.1 % of largest Peak  
 Start Thrs: 0.2 Max Peaks: 100  
 Stop Thrs : 0 Peak Location: TOP

If leading or trailing edge < 100 prefer < Baseline drop else tangent >  
 Peak separation: 5

Method : Z:\svoasrv\HPCHEM1\BNA\_M\Methods\SFAM-EPA-BM040922.M  
 Title : SVOA CALIBRATION

37	16.283	2251	2252	2258	rVB6	5035	5441	0.12%	0.018%
38	16.495	2285	2288	2291	rVB4	4868	4826	0.11%	0.016%
39	16.648	2310	2314	2318	rBV4	4366	6533	0.14%	0.021%
40	16.930	2358	2362	2366	rVB7	3468	5333	0.12%	0.017%
41	17.253	2411	2417	2426	rBV	1044707	1534670	33.77%	4.958%
42	17.348	2427	2433	2447	rVV	1243685	1922848	42.32%	6.212%
43	17.453	2449	2451	2462	rVB10	11911	28280	0.62%	0.091%
44	17.930	2527	2532	2536	rBV7	6158	10787	0.24%	0.035%
45	18.153	2565	2570	2580	rBV2	66836	122616	2.70%	0.396%
46	19.212	2747	2750	2754	rVB3	14027	17367	0.38%	0.056%
47	19.283	2759	2762	2766	rBV3	17593	25433	0.56%	0.082%
48	19.430	2785	2787	2795	rVB9	15575	19209	0.42%	0.062%
49	19.642	2817	2823	2827	rBV	1647596	2195081	48.31%	7.091%
50	19.689	2827	2831	2844	rVB	3480603	4543931	100.00%	14.680%
51	20.724	3005	3007	3013	rVB3	41406	48546	1.07%	0.157%
52	21.141	3074	3078	3087	rBV2	184837	275132	6.05%	0.889%
53	21.430	3122	3127	3143	rBV	935400	1603702	35.29%	5.181%
54	23.647	3497	3504	3511	rBV	904926	1870418	41.16%	6.043%
55	23.800	3524	3530	3546	rVB	767419	1606536	35.36%	5.190%

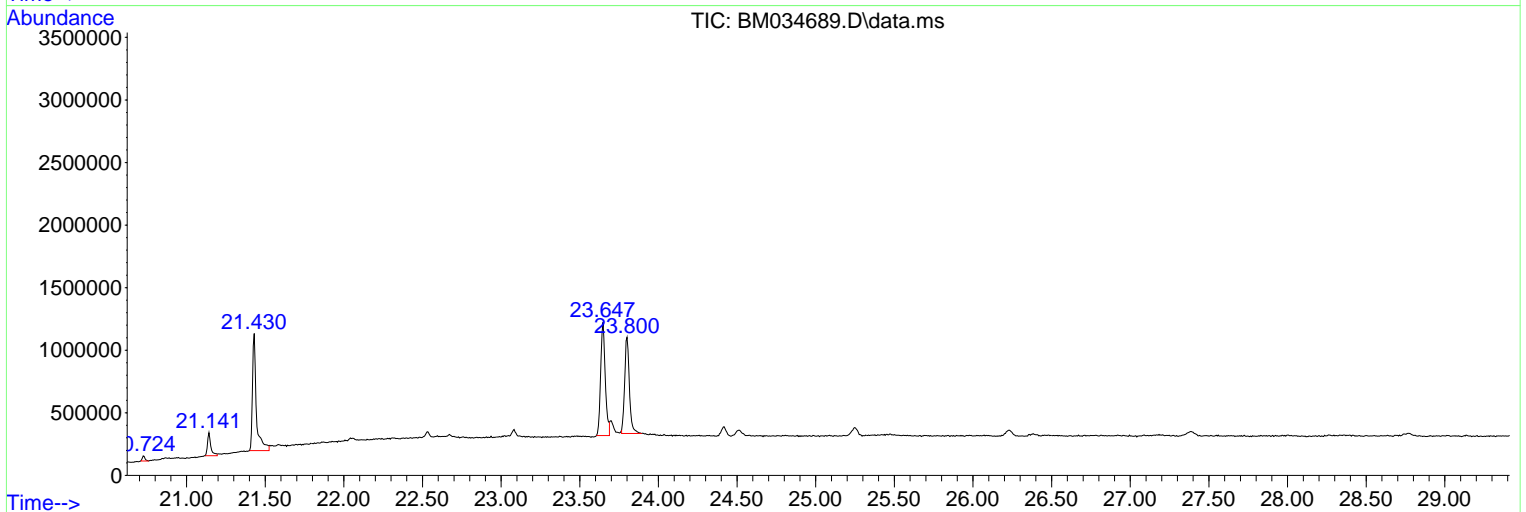
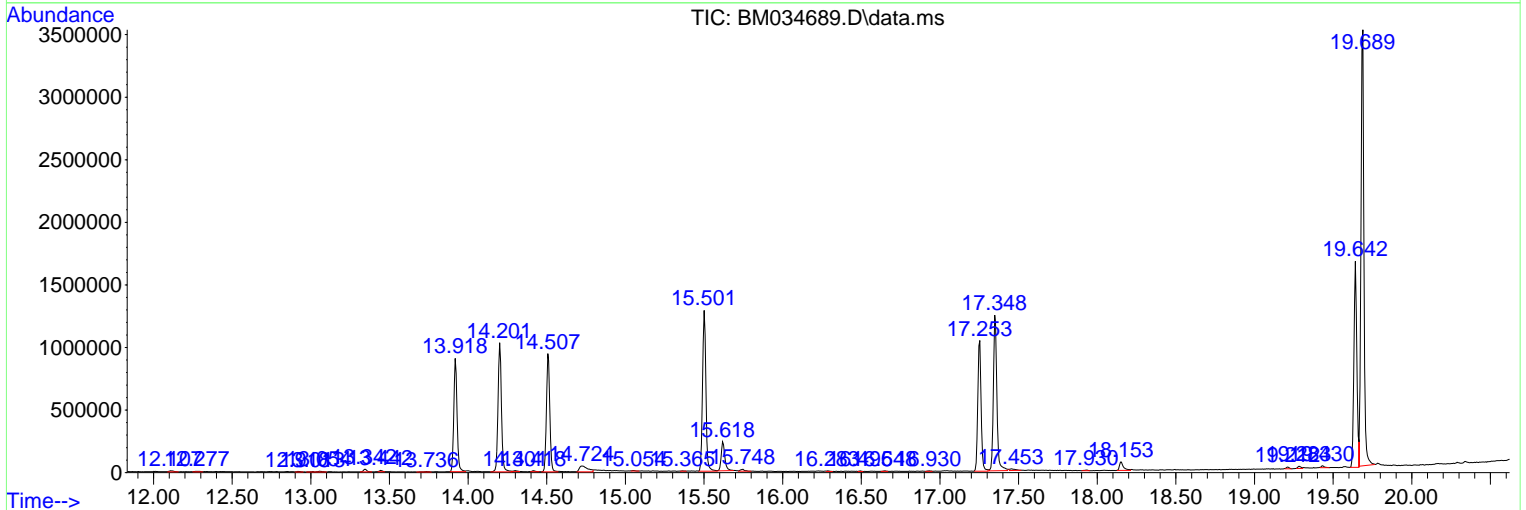
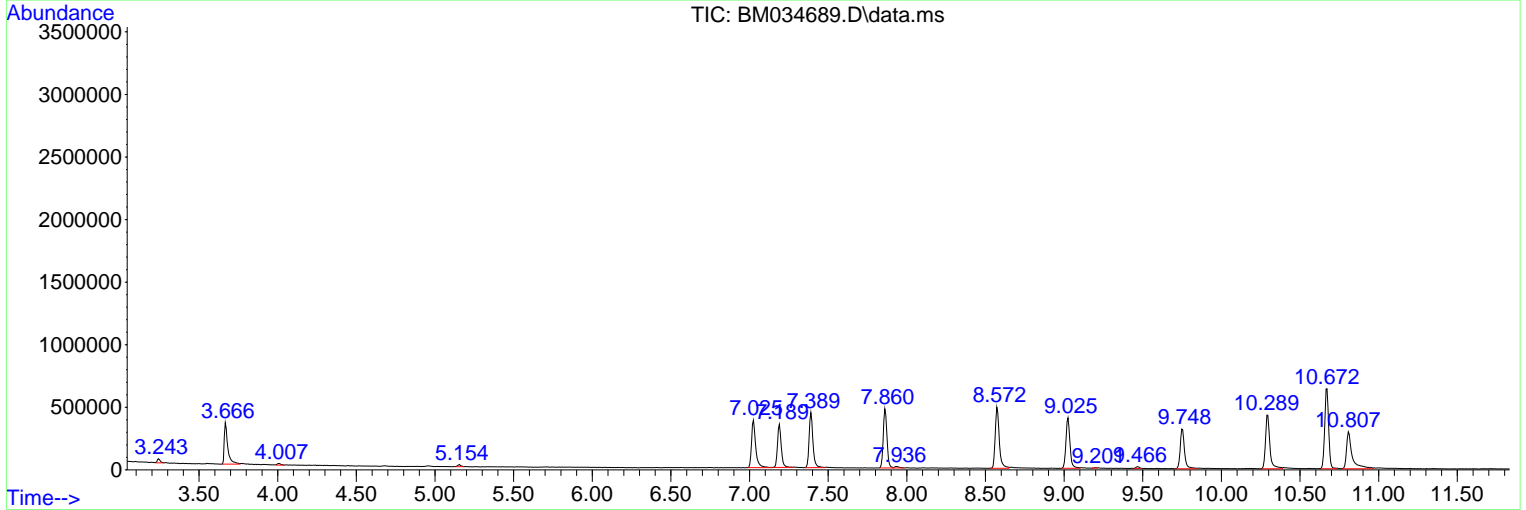
Sum of corrected areas: 30954238

Data Path : Z:\svoasrv\HPCHEM1\BNA\_M\Data\BM041422\  
 Data File : BM034689.D  
 Acq On : 15 Apr 2022 04:15  
 Operator : CG/JU  
 Sample : N2316-19  
 Misc :  
 ALS Vial : 31 Sample Multiplier: 1

Instrument :  
 BNA\_M  
 ClientSampleId :  
 ETNR7

Quant Method : Z:\svoasrv\HPCHEM1\BNA\_M\Methods\SFAM-EPA-BM040922.M  
 Quant Title : SVOA CALIBRATION

TIC Library : C:\Database\NIST20.L  
 TIC Integration Parameters: LSCINT.P



Data Path : Z:\svoasrv\HPCHEM1\BNA\_M\Data\BM041422\  
 Data File : BM034689.D  
 Acq On : 15 Apr 2022 04:15  
 Operator : CG/JU  
 Sample : N2316-19  
 Misc :  
 ALS Vial : 31 Sample Multiplier: 1

Instrument :  
 BNA\_M  
 ClientSampleId :  
 ETNR7

Quant Method : Z:\svoasrv\HPCHEM1\BNA\_M\Methods\SFAM-EPA-BM040922.M  
 Quant Title : SVOA CALIBRATION

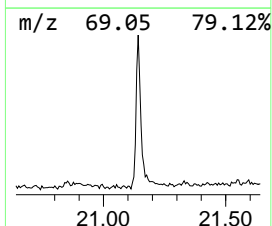
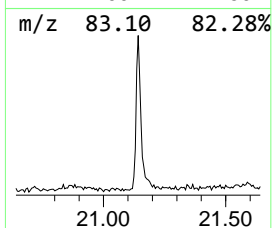
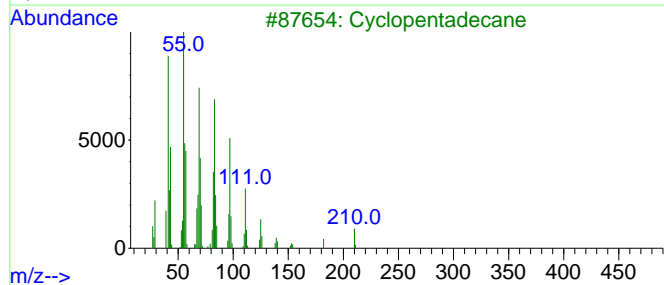
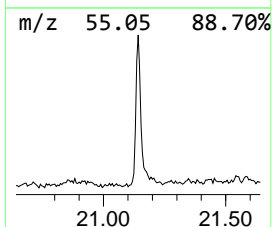
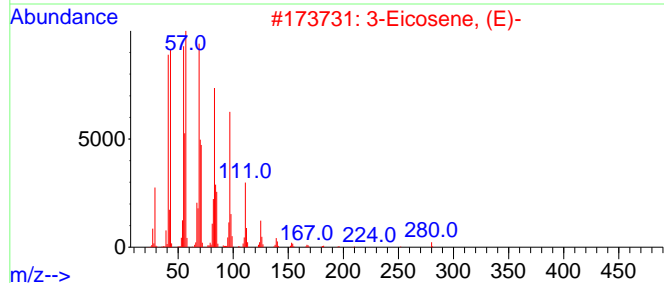
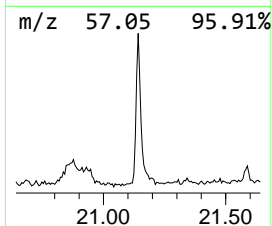
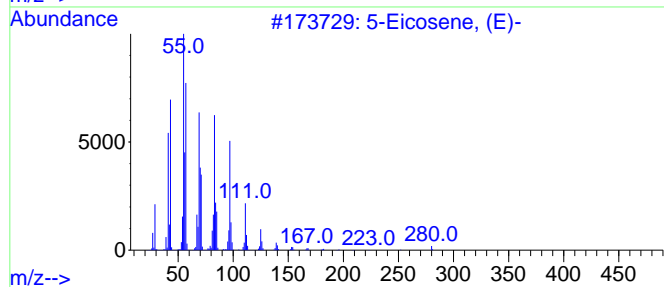
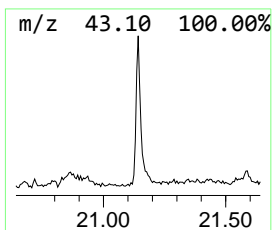
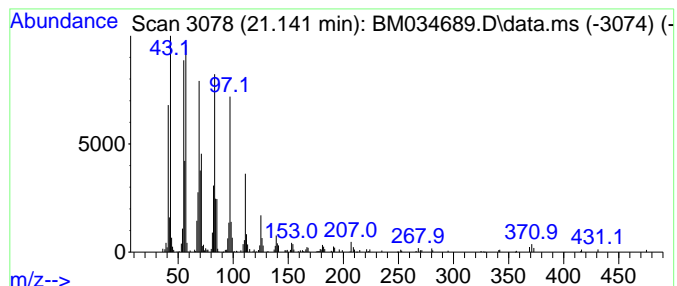
TIC Library : C:\Database\NIST20.L  
 TIC Integration Parameters: LSCINT.P

\*\*\*\*\*  
 Peak Number 1 (DEL) Alkane: Straight-Chai... Concentration Rank 1

R.T.	EstConc	Area	Relative to ISTD	R.T.
21.142	3.43 ng/ul	275132	Chrysene-d12	21.430

Hit#	of 5	Tentative ID	MW	MolForm	CAS#	Qual
1		5-Eicosene, (E)-	280	C20H40	074685-30-6	99
2		3-Eicosene, (E)-	280	C20H40	074685-33-9	98
3		Cyclopentadecane	210	C15H30	000295-48-7	96
4		n-Tetracosanol-1	354	C24H50O	000506-51-4	94
5		1-Hexacosene	364	C26H52	018835-33-1	94



Data Path : Z:\svoasrv\HPCHEM1\BNA\_M\Data\BM041422\  
Data File : BM034689.D  
Acq On : 15 Apr 2022 04:15  
Operator : CG/JU  
Sample : N2316-19  
Misc :  
ALS Vial : 31 Sample Multiplier: 1

Instrument :  
BNA\_M  
ClientSampleId :  
ETNR7

Quant Method : Z:\svoasrv\HPCHEM1\BNA\_M\Methods\SFAM-EPA-BM040922.M  
Quant Title : SVOA CALIBRATION

TIC Library : C:\Database\NIST20.L  
TIC Integration Parameters: LSCINT.P

TIC Top Hit name	RT	EstConc	Units	Response	--Internal Standard--			
					#	RT	Resp	Conc
(DEL) Alkane: S...	21.142	3.4	ng/u1	275132	5	21.430	1603700	20.0