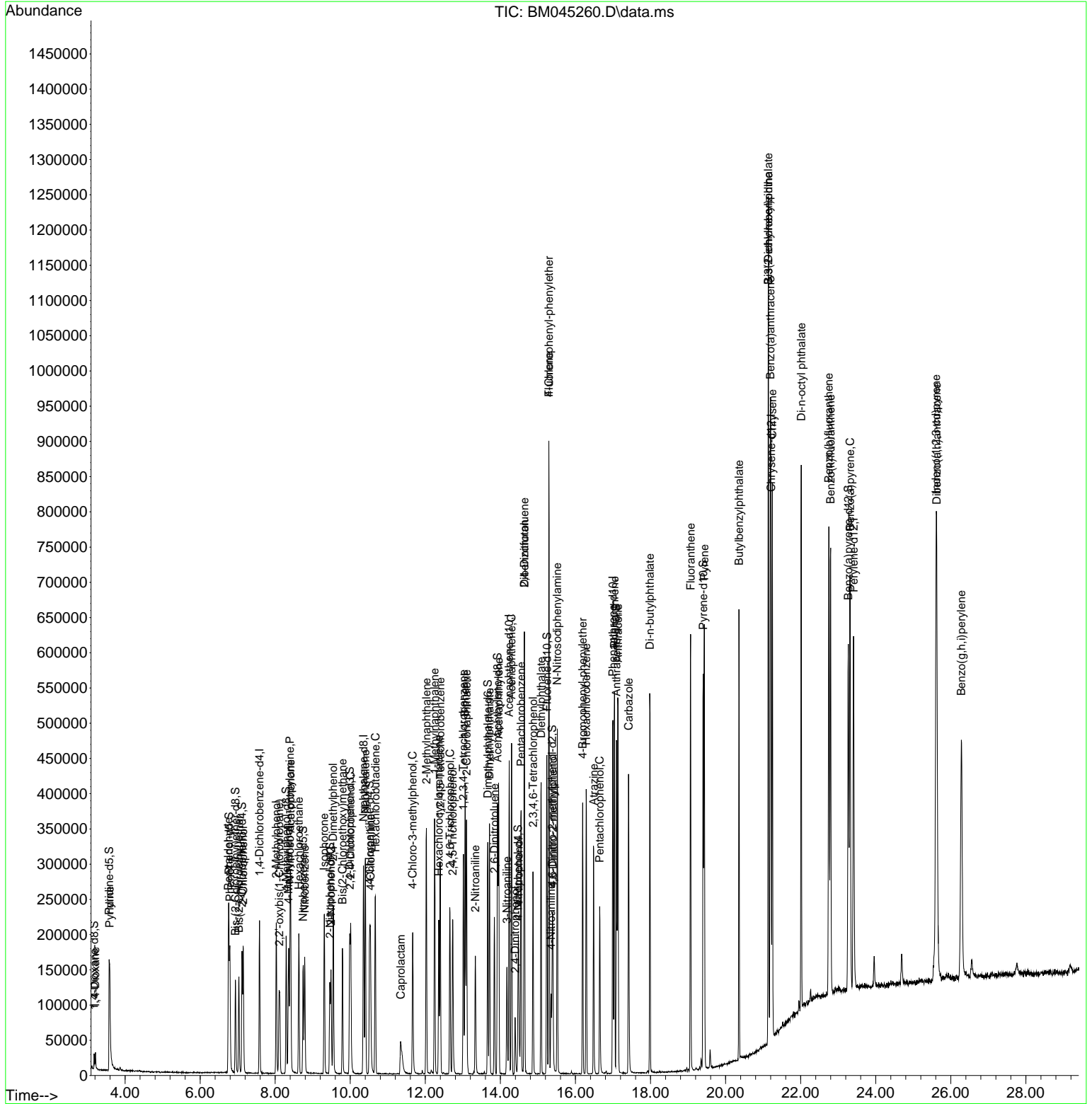


Data Path : Z:\svoasrv\HPCHEM1\BNA_M\Data\BM041524\
 Data File : BM045260.D
 Acq On : 16 Apr 2024 01:38
 Operator : MA/JU
 Sample : SSTDCCC020
 Misc :
 ALS Vial : 19 Sample Multiplier: 1

Instrument :
 BNA_M
ClientSampleId :
 SSTD020101

Quant Time: Apr 16 02:07:57 2024
 Quant Method : Z:\svoasrv\HPCHEM1\BNA_M\Methods\SFAM-EPA-BM040524.MA.M
 Quant Title : SVOA CALIBRATION
 QLast Update : Mon Apr 15 22:24:11 2024
 Response via : Initial Calibration

Manual Integrations
APPROVED
 Reviewed By :Yogesh Patel 04/17/2024
 Supervised By :mohammad ahmed 04/18/2024



Data Path : Z:\svoasrv\HPCHEM1\BNA_M\Data\BM041524\
 Data File : BM045260.D
 Acq On : 16 Apr 2024 01:38
 Operator : MA/JU
 Sample : SSTDCCC020
 Misc :
 ALS Vial : 19 Sample Multiplier: 1

Instrument :
 BNA_M
 ClientSampleId :
 SSTD020101

Manual Integrations
 APPROVED

Reviewed By :Yogesh Patel 04/17/2024
 Supervised By :mohammad ahmed 04/18/2024

Quant Time: Apr 16 02:07:57 2024
 Quant Method : Z:\svoasrv\HPCHEM1\BNA_M\Methods\SFAM-EPA-BM040524.MA.M
 Quant Title : SVOA CALIBRATION
 QLast Update : Mon Apr 15 22:24:11 2024
 Response via : Initial Calibration

Compound	R.T.	QIon	Response	Conc	Units	Dev(Min)
Internal Standards						
1) 1,4-Dichlorobenzene-d4	7.581	152	56212	20.000	ng/u1	0.00
20) Naphthalene-d8	10.351	136	227978	20.000	ng/u1	0.00
38) Acenaphthene-d10	14.233	164	140649	20.000	ng/u1	0.00
64) Phenanthrene-d10	16.998	188	279330	20.000	ng/u1	0.00
79) Chrysene-d12	21.209	240	274665	20.000	ng/u1	0.00
88) Perylene-d12	23.409	264	342626	20.000	ng/u1	0.00
System Monitoring Compounds						
3) 1,4-Dioxane-d8	3.175	96	9647	6.409	ng/uL	0.00
4) Pyridine-d5	3.575	84	67782	16.558	ng/u1	0.00
7) Phenol-d5	6.769	99	83555	17.534	ng/u1	0.00
9) Bis-(2-Chloroethyl)eth...	6.940	67	56274	19.821	ng/u1	0.00
11) 2-Chlorophenol-d4	7.116	132	74737	20.018	ng/u1	0.00
15) 4-Methylphenol-d8	8.292	113	70415	18.878	ng/u1	0.00
21) Nitrobenzene-d5	8.745	128	34714	19.823	ng/u1	0.00
24) 2-Nitrophenol-d4	9.457	143	37946	20.530	ng/u1	0.00
28) 2,4-Dichlorophenol-d3	9.986	165	71800	21.187	ng/u1	0.00
31) 4-Chloroaniline-d4	10.516	131	101187	18.754	ng/u1	0.00
46) Dimethylphthalate-d6	13.663	166	204939	20.927	ng/u1	0.00
49) Acenaphthylene-d8	13.922	160	235169	20.327	ng/u1	0.00
54) 4-Nitrophenol-d4	14.469	143	30586	14.965	ng/u1	0.00
60) Fluorene-d10	15.239	176	169067	19.365	ng/u1	0.00
65) 4,6-Dinitro-2-methylph...	15.380	200	28552	17.239	ng/u1	0.00
73) Anthracene-d10	17.092	188	257691	20.507	ng/u1	0.00
81) Pyrene-d10	19.404	212	286128	21.156	ng/u1	0.00
92) Benzo(a)pyrene-d12	23.268	264	335811	20.091	ng/u1	0.00
Target Compounds						
2) 1,4-Dioxane	3.210	88	11002	6.998	ng/uL#	81
5) Pyridine	3.593	79	71068	16.385	ng/u1	94
6) Benzaldehyde	6.751	77	54173	24.523	ng/u1	94
8) Phenol	6.793	94	87843	17.801	ng/u1	96
10) Bis(2-Chloroethyl)ether	7.034	93	74136	19.250	ng/u1	99
12) 2-Chlorophenol	7.151	128	73864	18.855	ng/u1	98
13) 2-Methylphenol	8.028	108	66763	18.329	ng/u1	91
14) 2,2'-oxybis(1-Chloropr...	8.104	45	92749	20.191	ng/u1	98
16) Acetophenone	8.410	105	114429	18.869	ng/u1	99
17) N-Nitroso-di-n-propyla...	8.392	70	57083	19.936	ng/u1#	91
18) 4-Methylphenol	8.357	108	71563	18.228	ng/u1	96
19) Hexachloroethane	8.628	117	36572	21.225	ng/u1	99
22) Nitrobenzene	8.787	77	90641	21.097	ng/u1	96
23) Isophorone	9.304	82	161893	20.509	ng/u1	97
25) 2-Nitrophenol	9.487	139	42914	20.918	ng/u1#	90
26) 2,4-Dimethylphenol	9.545	107	79053	19.987	ng/u1	97
27) Bis(2-Chloroethoxy)met...	9.792	93	99300	21.220	ng/u1	96
29) 2,4-Dichlorophenol	10.010	162	69529	20.307	ng/u1	98
30) Naphthalene	10.404	128	244439	20.254	ng/u1	99
32) 4-Chloroaniline	10.539	127	95837	18.255	ng/u1	96
33) Hexachlorobutadiene	10.669	225	44885	21.085	ng/u1	94
34) Caprolactam	11.345	113	19268m	16.669	ng/u1	
35) 4-Chloro-3-methylphenol	11.663	107	67168	19.735	ng/u1	99
36) 2-Methylnaphthalene	12.028	142	163975	20.809	ng/u1	98

Data Path : Z:\svoasrv\HPCHEM1\BNA_M\Data\BM041524\
 Data File : BM045260.D
 Acq On : 16 Apr 2024 01:38
 Operator : MA/JU
 Sample : SSTDCCC020
 Misc :
 ALS Vial : 19 Sample Multiplier: 1

Instrument :
 BNA_M
 ClientSampleId :
 SSTD020101

Manual Integrations
 APPROVED

Reviewed By :Yogesh Patel 04/17/2024
 Supervised By :mohammad ahmed 04/18/2024

Quant Time: Apr 16 02:07:57 2024
 Quant Method : Z:\svoasrv\HPCHEM1\BNA_M\Methods\SFAM-EPA-BM040524.MA.M
 Quant Title : SVOA CALIBRATION
 QLast Update : Mon Apr 15 22:24:11 2024
 Response via : Initial Calibration

Compound	R.T.	QIon	Response	Conc	Units	Dev(Min)
37) 1-Methylnaphthalene	12.245	142	163783	20.539	ng/ul	98
39) 1,2,4,5-Tetrachloroben...	12.398	216	81902	21.293	ng/ul	98
40) Hexachlorocyclopentadiene	12.357	237	51744	22.222	ng/ul	99
41) 2,4,6-Trichlorophenol	12.657	196	50995	20.323	ng/ul	97
42) 2,4,5-Trichlorophenol	12.727	196	56726	20.518	ng/ul	100
43) 1,1'-Biphenyl	13.057	154	209114	21.055	ng/ul	98
44) 2-Chloronaphthalene	13.098	162	166631	20.651	ng/ul	99
45) 2-Nitroaniline	13.333	65	46070	20.683	ng/ul	92
47) Dimethylphthalate	13.710	163	213077	20.817	ng/ul	100
48) 2,6-Dinitrotoluene	13.839	165	40443	20.158	ng/ul#	85
50) Acenaphthylene	13.951	152	274030	20.280	ng/ul	99
51) 3-Nitroaniline	14.174	138	39401	18.004	ng/ul	92
52) Acenaphthene	14.298	153	187954	20.846	ng/ul	97
53) 2,4-Dinitrophenol	14.392	184	17435	14.617	ng/ul	91
55) 4-Nitrophenol	14.486	109	29927	16.650	ng/ul	87
56) Dibenzofuran	14.639	168	241209	19.550	ng/ul	96
57) 2,4-Dinitrotoluene	14.639	165	57586	19.175	ng/ul#	84
58) 2,3,4,6-Tetrachlorophenol	14.869	232	46334	19.582	ng/ul	96
59) Diethylphthalate	15.086	149	220561	21.121	ng/ul	99
61) Fluorene	15.292	166	197905	19.031	ng/ul	99
62) 4-Chlorophenyl-phenyle...	15.292	204	95089	19.509	ng/ul	96
63) 4-Nitroaniline	15.351	138	36401	18.295	ng/ul	95
66) 4,6-Dinitro-2-methylph...	15.398	198	30316	17.092	ng/ul#	98
67) N-Nitrosodiphenylamine	15.516	169	164904	21.884	ng/ul	99
68) 4-Bromophenyl-phenylether	16.192	248	62129	22.838	ng/ul	97
69) Hexachlorobenzene	16.286	284	72762	20.561	ng/ul	94
70) Atrazine	16.486	200	57253	20.656	ng/ul	98
71) Pentachlorophenol	16.645	266	38620	17.966	ng/ul	99
72) Phenanthrene	17.039	178	308917	20.551	ng/ul	99
74) Anthracene	17.133	178	318448	20.710	ng/ul	99
75) 1,2,3,4-Tetrachloroben...	13.016	216	80557	22.881	ng/uL	97
76) Pentachlorobenzene	14.551	250	83930	22.406	ng/uL	99
77) Carbazole	17.415	167	277333	18.705	ng/ul	99
78) Di-n-butylphthalate	17.980	149	384287	22.983	ng/ul	99
80) Fluoranthene	19.068	202	347135	21.762	ng/ul	98
82) Pyrene	19.433	202	365437	21.229	ng/ul	98
83) Butylbenzylphthalate	20.356	149	166375	23.069	ng/ul	90
84) 3,3'-Dichlorobenzidine	21.139	252	123023	20.144	ng/ul	98
85) Benzo(a)anthracene	21.192	228	373570	20.045	ng/ul	97
86) Bis(2-ethylhexyl)phtha...	21.139	149	267957	23.769	ng/ul	97
87) Chrysene	21.245	228	348992	20.088	ng/ul	99
89) Di-n-octyl phthalate	22.015	149	465523	21.595	ng/ul	100
90) Benzo(b)fluoranthene	22.750	252	410835	20.573	ng/ul	98
91) Benzo(k)fluoranthene	22.797	252	399054	19.854	ng/ul	98
93) Benzo(a)pyrene	23.315	252	389125	20.022	ng/ul	99
94) Indeno(1,2,3-cd)pyrene	25.609	276	508148	20.184	ng/ul	99
95) Dibenzo(a,h)anthracene	25.627	278	420660	19.985	ng/ul	97
96) Benzo(g,h,i)perylene	26.280	276	406345	20.460	ng/ul	100

(#) = qualifier out of range (m) = manual integration (+) = signals summed