

Data Path : Z:\svoasrv\HPCHEM1\BNA\_M\Data\BM041724\  
 Data File : BM045323.D  
 Acq On : 17 Apr 2024 18:54  
 Operator : MA/JU  
 Sample : P2032-19MSD  
 Misc :  
 ALS Vial : 14 Sample Multiplier: 1

**Instrument :**  
 BNA\_M  
**ClientSampleId :**  
 E0MG3MSD

**Manual Integrations**  
**APPROVED**  
 Reviewed By :Yogesh Patel 04/18/2024  
 Supervised By :mohammad ahmed 04/25/2024

Quant Time: Apr 17 19:30:39 2024  
 Quant Method : Z:\svoasrv\HPCHEM1\BNA\_M\Methods\SFAM-EPA-BM040524.MA.M  
 Quant Title : SVOA CALIBRATION  
 QLast Update : Wed Apr 17 12:42:01 2024  
 Response via : Initial Calibration

Compound	R.T.	QIon	Response	Conc	Units	Dev(Min)
-----						
Internal Standards						
1) 1,4-Dichlorobenzene-d4	7.575	152	49275	20.000	ng/ul	0.00
20) Naphthalene-d8	10.340	136	192205	20.000	ng/ul	0.00
38) Acenaphthene-d10	14.222	164	113757	20.000	ng/ul	0.00
64) Phenanthrene-d10	16.986	188	228791	20.000	ng/ul	0.00
79) Chrysene-d12	21.198	240	223216	20.000	ng/ul	0.00
88) Perylene-d12	23.397	264	297664	20.000	ng/ul	0.00

System Monitoring Compounds						
3) 1,4-Dioxane-d8	3.175	96	5025	3.808	ng/uL	0.00
4) Pyridine-d5	3.593	84	11074	3.086	ng/ul	0.02
7) Phenol-d5	6.763	99	24692	5.911	ng/ul	0.00
9) Bis-(2-Chloroethyl)eth...	6.934	67	73040	29.348	ng/ul	0.00
11) 2-Chlorophenol-d4	7.110	132	77552	23.697	ng/ul	0.00
15) 4-Methylphenol-d8	8.287	113	44666	13.660	ng/ul	0.00
21) Nitrobenzene-d5	8.734	128	47412	32.114	ng/ul	0.00
24) 2-Nitrophenol-d4	9.445	143	48556	31.160	ng/ul	0.00
28) 2,4-Dichlorophenol-d3	9.975	165	82879	29.008	ng/ul	0.00
31) 4-Chloroaniline-d4	10.504	131	86795	19.081	ng/ul	0.00
46) Dimethylphthalate-d6	13.651	166	269515	34.027	ng/ul	0.00
49) Acenaphthylene-d8	13.916	160	300087	32.070	ng/ul	0.00
54) 4-Nitrophenol-d4	14.469	143	8692	5.258	ng/ul	0.00
60) Fluorene-d10	15.227	176	225487	31.932	ng/ul	0.00
65) 4,6-Dinitro-2-methylph...	15.374	200	40117	29.573	ng/ul	0.00
73) Anthracene-d10	17.086	188	347559	33.769	ng/ul	0.00
81) Pyrene-d10	19.392	212	410138	37.315	ng/ul	0.00
92) Benzo(a)pyrene-d12	23.256	264	513735	35.379	ng/ul	0.00

Target Compounds					Qvalue
2) 1,4-Dioxane	3.211	88	4737	3.437	ng/uL 90
5) Pyridine	3.605	79	14027	3.689	ng/ul# 85
6) Benzaldehyde	6.746	77	73933	38.180	ng/ul 98
8) Phenol	6.787	94	27001	6.242	ng/ul 93
10) Bis(2-Chloroethyl)ether	7.022	93	93386	27.662	ng/ul 98
12) 2-Chlorophenol	7.140	128	76583	22.301	ng/ul 97
13) 2-Methylphenol	8.022	108	50598	15.847	ng/ul 98
14) 2,2'-oxybis(1-Chloropr...	8.093	45	111224	27.622	ng/ul 98
16) Acetophenone	8.404	105	143676	27.027	ng/ul 97
17) N-Nitroso-di-n-propyla...	8.387	70	70322	28.017	ng/ul# 90
18) 4-Methylphenol	8.351	108	47822	13.896	ng/ul 95
19) Hexachloroethane	8.622	117	44154	29.234	ng/ul 97
22) Nitrobenzene	8.775	77	115799	31.969	ng/ul 99
23) Isophorone	9.298	82	201022	30.206	ng/ul 100
25) 2-Nitrophenol	9.475	139	50642	29.280	ng/ul# 84
26) 2,4-Dimethylphenol	9.540	107	64876	19.456	ng/ul 99
27) Bis(2-Chloroethoxy)met...	9.781	93	120223	30.472	ng/ul 99
29) 2,4-Dichlorophenol	10.004	162	82862	28.706	ng/ul 98
30) Naphthalene	10.392	128	305613	30.036	ng/ul 100
32) 4-Chloroaniline	10.528	127	79718	18.011	ng/ul 100
33) Hexachlorobutadiene	10.657	225	54415	30.319	ng/ul 94
34) Caprolactam	11.351	113	2604m	2.672	ng/ul
35) 4-Chloro-3-methylphenol	11.651	107	69401	24.186	ng/ul 97
36) 2-Methylnaphthalene	12.016	142	203098	30.571	ng/ul 99

Data Path : Z:\svoasrv\HPCHEM1\BNA\_M\Data\BM041724\  
 Data File : BM045323.D  
 Acq On : 17 Apr 2024 18:54  
 Operator : MA/JU  
 Sample : P2032-19MSD  
 Misc :  
 ALS Vial : 14 Sample Multiplier: 1

Instrument :  
 BNA\_M  
 ClientSampleId :  
 E0MG3MSD

Manual Integrations  
 APPROVED

Reviewed By :Yogesh Patel 04/18/2024  
 Supervised By :mohammad ahmed 04/25/2024

Quant Time: Apr 17 19:30:39 2024  
 Quant Method : Z:\svoasrv\HPCHEM1\BNA\_M\Methods\SFAM-EPA-BM040524.MA.M  
 Quant Title : SVOA CALIBRATION  
 QLast Update : Wed Apr 17 12:42:01 2024  
 Response via : Initial Calibration

Compound	R.T.	QIon	Response	Conc	Units	Dev(Min)
37) 1-Methylnaphthalene	12.239	142	202368	30.101	ng/ul	100
39) 1,2,4,5-Tetrachloroben...	12.386	216	101678	32.683	ng/ul	98
40) Hexachlorocyclopentadiene	12.345	237	43608	23.155	ng/ul	95
41) 2,4,6-Trichlorophenol	12.645	196	62795	30.942	ng/ul	94
42) 2,4,5-Trichlorophenol	12.716	196	70066	31.334	ng/ul	94
43) 1,1'-Biphenyl	13.051	154	260610	32.443	ng/ul	97
44) 2-Chloronaphthalene	13.086	162	203953	31.251	ng/ul	98
45) 2-Nitroaniline	13.322	65	61233	33.990	ng/ul	94
47) Dimethylphthalate	13.704	163	264417	31.939	ng/ul	98
48) 2,6-Dinitrotoluene	13.833	165	53125	32.739	ng/ul#	85
50) Acenaphthylene	13.945	152	333862	30.549	ng/ul	100
51) 3-Nitroaniline	14.163	138	49227	27.812	ng/ul	90
52) Acenaphthene	14.286	153	222148	30.463	ng/ul	97
53) 2,4-Dinitrophenol	14.380	184	25576	26.511	ng/ul#	82
55) 4-Nitrophenol	14.486	109	8277	5.693	ng/ul#	85
56) Dibenzofuran	14.627	168	302434	30.307	ng/ul	97
57) 2,4-Dinitrotoluene	14.627	165	76453	31.476	ng/ul#	80
58) 2,3,4,6-Tetrachlorophenol	14.863	232	58299	30.463	ng/ul	99
59) Diethylphthalate	15.075	149	280726	33.238	ng/ul	99
61) Fluorene	15.286	166	253234	30.109	ng/ul	99
62) 4-Chlorophenyl-phenyle...	15.286	204	114784	29.117	ng/ul	93
63) 4-Nitroaniline	15.339	138	52102m	32.377	ng/ul	
66) 4,6-Dinitro-2-methylph...	15.386	198	42879	29.515	ng/ul#	91
67) N-Nitrosodiphenylamine	15.510	169	212957	34.504	ng/ul	100
68) 4-Bromophenyl-phenylether	16.180	248	74368	33.375	ng/ul	91
69) Hexachlorobenzene	16.280	284	94739	32.685	ng/ul	95
70) Atrazine	16.474	200	66321	29.213	ng/ul	98
71) Pentachlorophenol	16.639	266	52961	30.079	ng/ul	99
72) Phenanthrene	17.027	178	407122	33.067	ng/ul	98
74) Anthracene	17.121	178	407129	32.326	ng/ul	99
75) 1,2,3,4-Tetrachloroben...	13.004	216	98904	34.298	ng/uL	98
76) Pentachlorobenzene	14.539	250	101449	33.065	ng/uL	97
77) Carbazole	17.404	167	390485	32.154	ng/ul	98
78) Di-n-butylphthalate	17.974	149	507979	37.091	ng/ul	99
80) Fluoranthene	19.057	202	474446	36.598	ng/ul	99
82) Pyrene	19.421	202	512909	36.664	ng/ul	99
83) Butylbenzylphthalate	20.351	149	232802	39.720	ng/ul	92
84) 3,3'-Dichlorobenzidine	21.133	252	149366	30.095	ng/ul	94
85) Benzo(a)anthracene	21.186	228	498762	32.931	ng/ul	98
86) Bis(2-ethylhexyl)phtha...	21.133	149	355558	38.809	ng/ul	98
87) Chrysene	21.239	228	485286	34.371	ng/ul	99
89) Di-n-octyl phthalate	22.003	149	629282	33.600	ng/ul	100
90) Benzo(b)fluoranthene	22.739	252	580177	33.442	ng/ul	99
91) Benzo(k)fluoranthene	22.786	252	576981	33.042	ng/ul	99
93) Benzo(a)pyrene	23.303	252	510409	30.229	ng/ul	99
94) Indeno(1,2,3-cd)pyrene	25.597	276	782743	35.788	ng/ul	99
95) Dibenzo(a,h)anthracene	25.609	278	641414	35.076	ng/ul	97
96) Benzo(g,h,i)perylene	26.262	276	622756	36.092	ng/ul	99

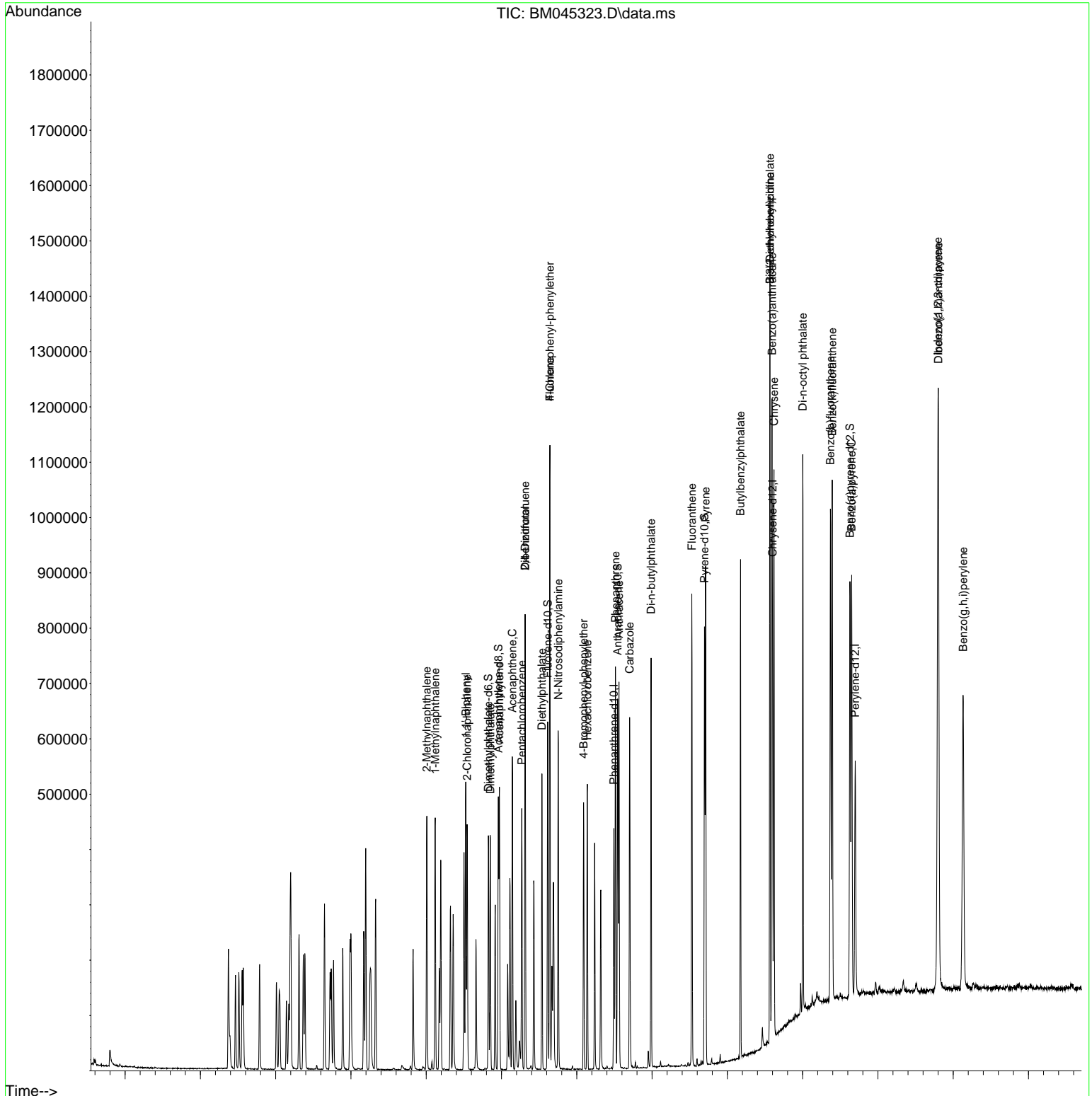
(#) = qualifier out of range (m) = manual integration (+) = signals summed

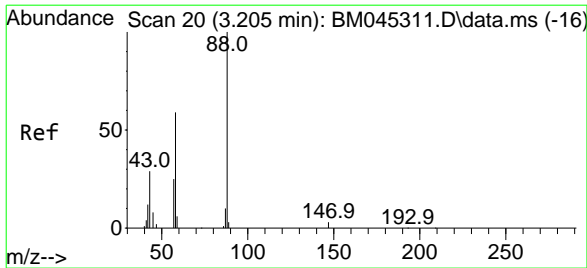
Data Path : Z:\svoasrv\HPCHEM1\BNA\_M\Data\BM041724\  
 Data File : BM045323.D  
 Acq On : 17 Apr 2024 18:54  
 Operator : MA/JU  
 Sample : P2032-19MSD  
 Misc :  
 ALS Vial : 14 Sample Multiplier: 1

**Instrument :**  
 BNA\_M  
**ClientSampleId :**  
 E0MG3MSD

Quant Time: Apr 17 19:30:39 2024  
 Quant Method : Z:\svoasrv\HPCHEM1\BNA\_M\Methods\SFAM-EPA-BM040524.MA.M  
 Quant Title : SVOA CALIBRATION  
 QLast Update : Wed Apr 17 12:42:01 2024  
 Response via : Initial Calibration

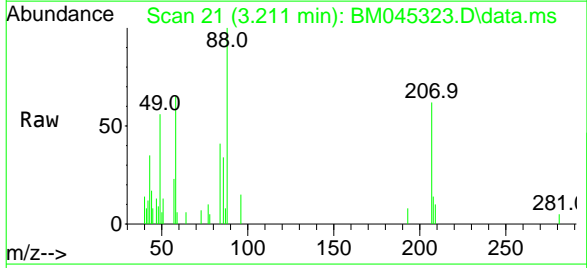
**Manual Integrations**  
**APPROVED**  
 Reviewed By :Yogesh Patel 04/18/2024  
 Supervised By :mohammad ahmed 04/25/2024





#2  
 1,4-Dioxane  
 Concen: 3.437 ng/uL  
 RT: 3.211 min Scan# 21  
 Delta R.T. 0.006 min  
 Lab File: BM045323.D  
 Acq: 17 Apr 2024 18:54

Instrument :  
 BNA\_M  
 ClientSampleId :  
 E0MG3MSD

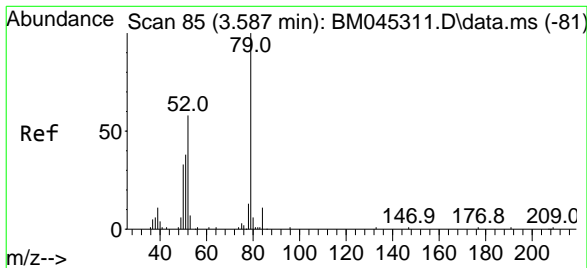
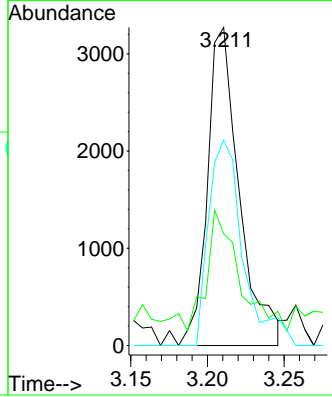
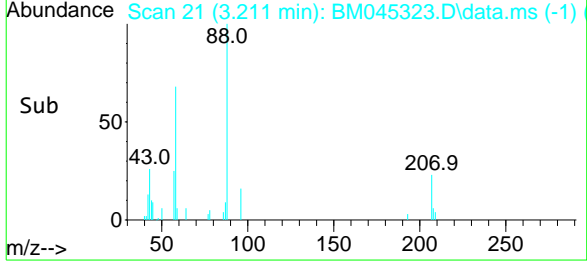


Tgt Ion: 88 Resp: 4737

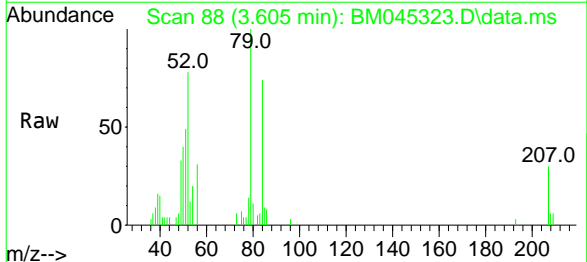
Ion	Ratio	Lower	Upper
88	100		
43	35.1	24.0	36.0
58	64.5	45.4	68.2

Manual Integrations  
 APPROVED

Reviewed By :Yogesh Patel 04/18/2024  
 Supervised By :mohammad ahmed 04/25/2024

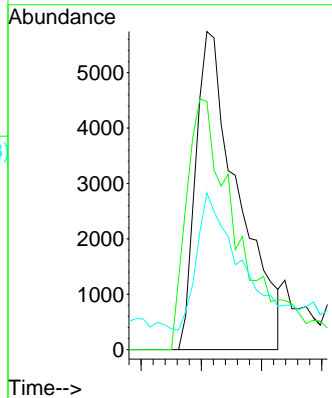
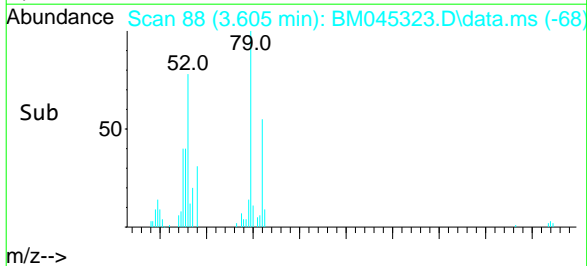


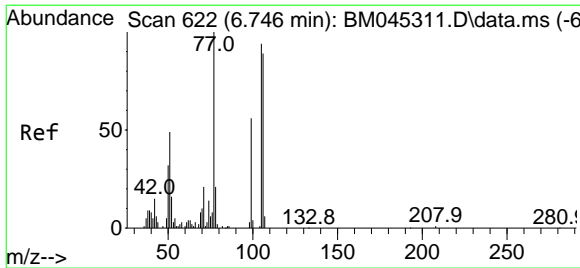
#5  
 Pyridine  
 Concen: 3.689 ng/uL  
 RT: 3.605 min Scan# 88  
 Delta R.T. 0.018 min  
 Lab File: BM045323.D  
 Acq: 17 Apr 2024 18:54



Tgt Ion: 79 Resp: 14027

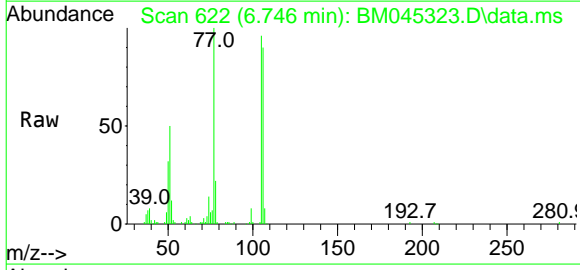
Ion	Ratio	Lower	Upper
79	100		
52	78.0	56.0	84.0
51	49.3	27.6	41.4





#6  
 Benzaldehyde  
 Concen: 38.180 ng/u1  
 RT: 6.746 min Scan# 62  
 Delta R.T. 0.000 min  
 Lab File: BM045323.D  
 Acq: 17 Apr 2024 18:54

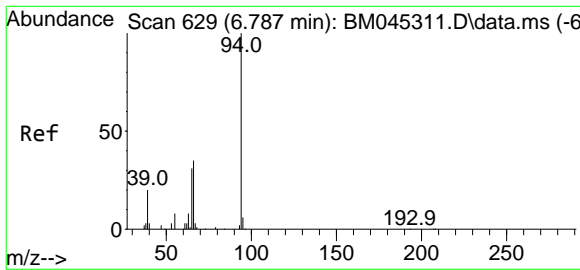
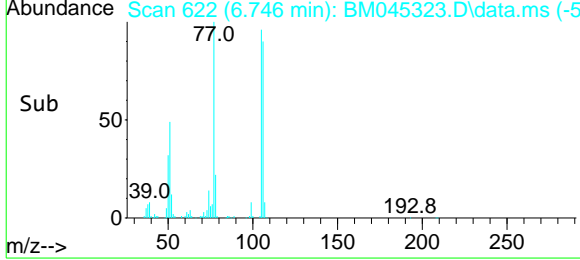
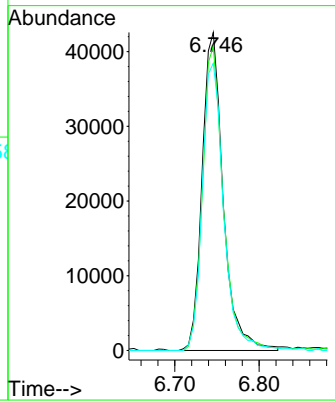
Instrument :  
 BNA\_M  
 ClientSampleId :  
 E0MG3MSD



Tgt Ion: 77 Resp: 73933

Ion	Ratio	Lower	Upper
77	100		
105	95.6	75.8	113.6
106	90.3	74.6	112.0

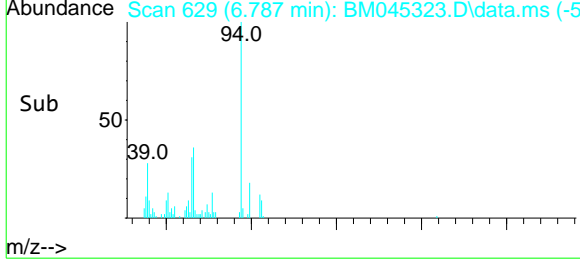
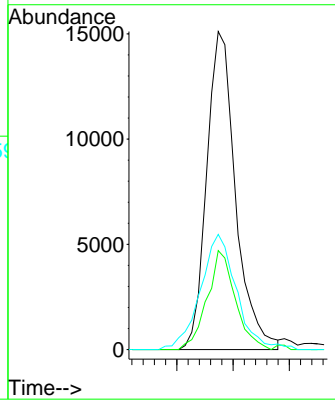
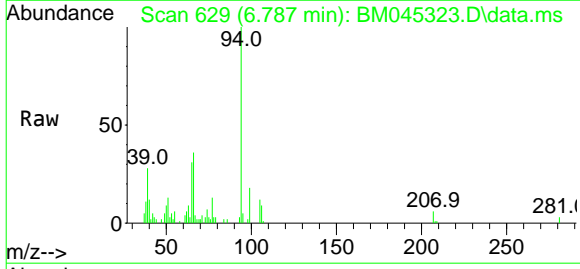
Manual Integrations  
**APPROVED**  
 Reviewed By :Yogesh Patel 04/18/2024  
 Supervised By :mohammad ahmed 04/25/2024

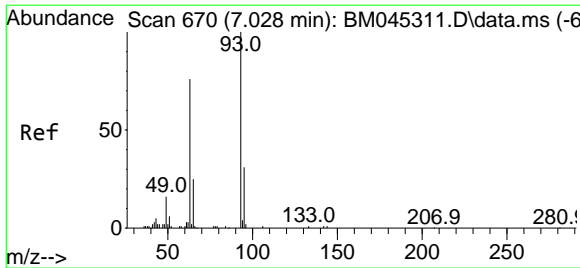


#8  
 Phenol  
 Concen: 6.242 ng/u1  
 RT: 6.787 min Scan# 629  
 Delta R.T. 0.000 min  
 Lab File: BM045323.D  
 Acq: 17 Apr 2024 18:54

Tgt Ion: 94 Resp: 27001

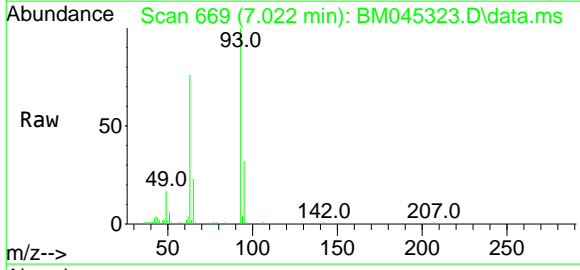
Ion	Ratio	Lower	Upper
94	100		
65	31.1	21.7	32.5
66	36.2	31.9	47.9





#10  
 Bis(2-Chloroethyl)ether  
 Concen: 27.662 ng/u1  
 RT: 7.022 min Scan# 669  
 Delta R.T. -0.006 min  
 Lab File: BM045323.D  
 Acq: 17 Apr 2024 18:54

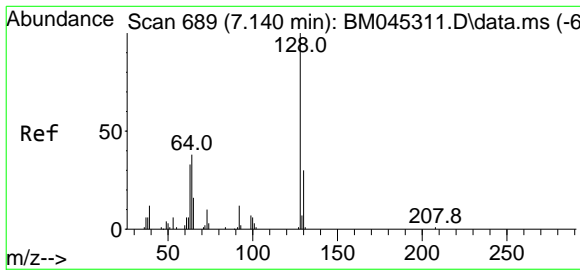
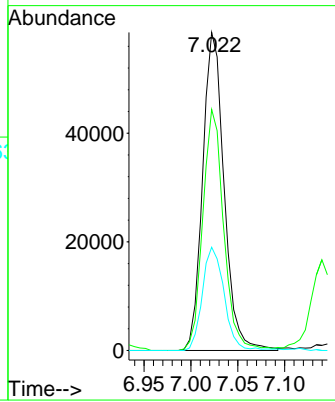
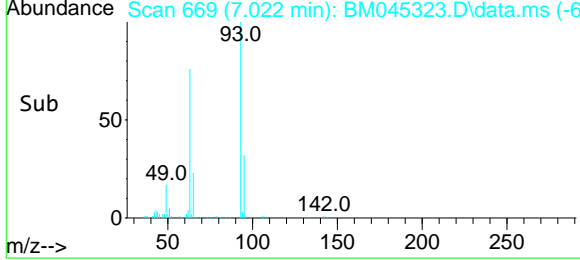
Instrument : BNA\_M  
 ClientSampleId : E0MG3MSD



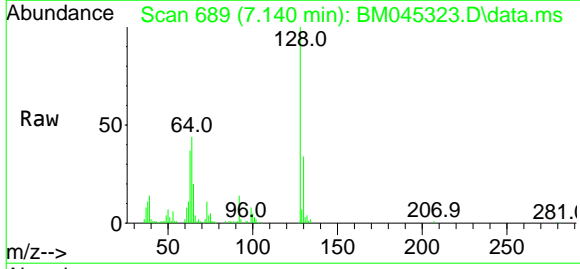
Tgt Ion: 93 Resp: 93386

Ion	Ratio	Lower	Upper
93	100		
63	75.8	61.3	91.9
95	32.5	27.6	41.4

Manual Integrations  
**APPROVED**  
 Reviewed By :Yogesh Patel 04/18/2024  
 Supervised By :mohammad ahmed 04/25/2024

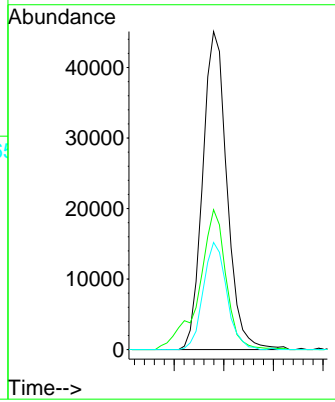
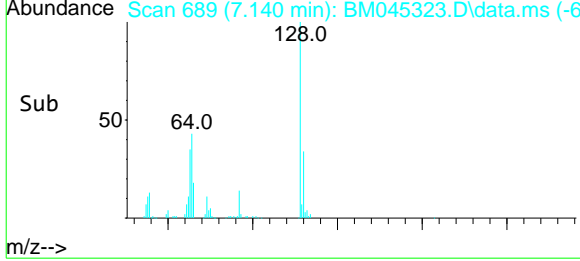


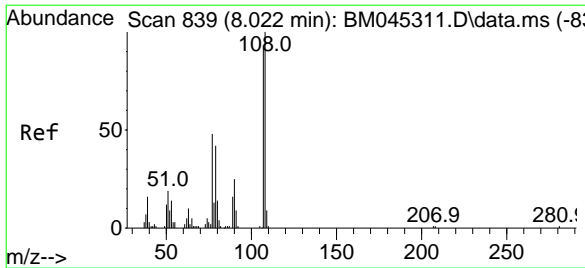
#12  
 2-Chlorophenol  
 Concen: 22.301 ng/u1  
 RT: 7.140 min Scan# 689  
 Delta R.T. 0.000 min  
 Lab File: BM045323.D  
 Acq: 17 Apr 2024 18:54



Tgt Ion:128 Resp: 76583

Ion	Ratio	Lower	Upper
128	100		
64	44.0	33.3	49.9
130	33.7	26.2	39.4





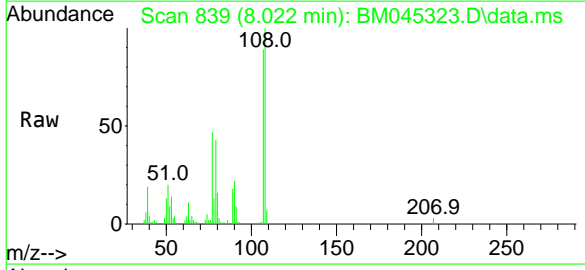
#13  
 2-Methylphenol  
 Concen: 15.847 ng/u1  
 RT: 8.022 min Scan# 839  
 Delta R.T. 0.000 min  
 Lab File: BM045323.D  
 Acq: 17 Apr 2024 18:54

Instrument :

BNA\_M

ClientSampleId :

E0MG3MSD

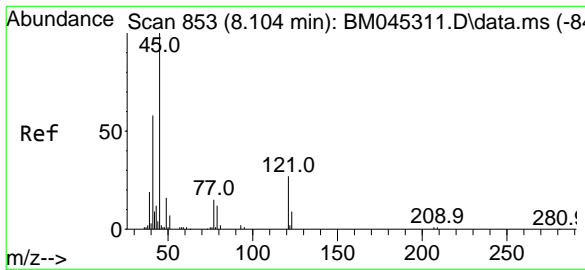
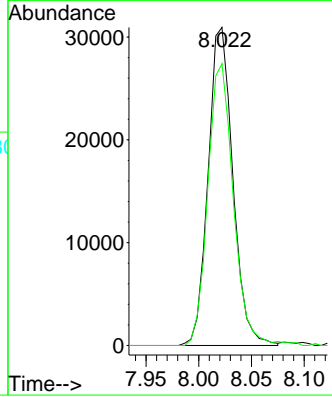
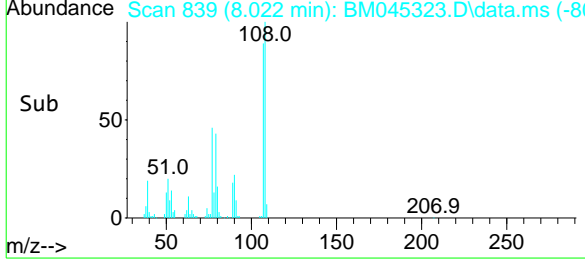


Tgt Ion: 108 Resp: 50598  
 Ion Ratio Lower Upper  
 108 100  
 107 88.6 69.1 103.7

Manual Integrations

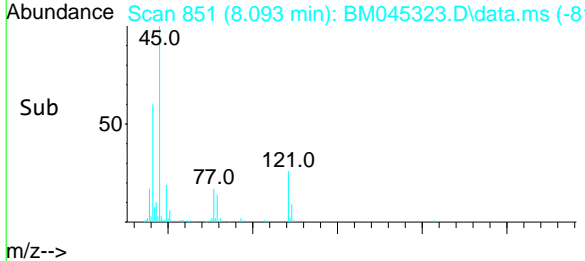
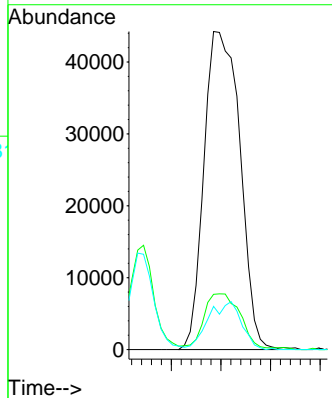
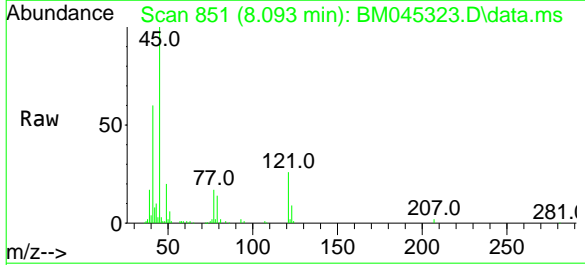
APPROVED

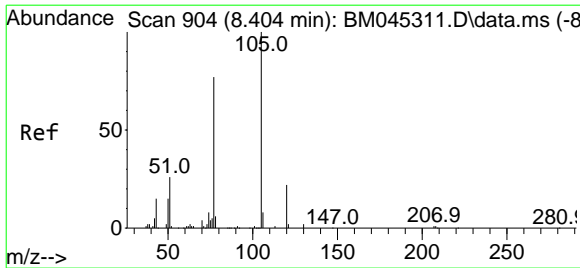
Reviewed By :Yogesh Patel 04/18/2024  
 Supervised By :mohammad ahmed 04/25/2024



#14  
 2,2'-oxybis(1-Chloropropane)  
 Concen: 27.622 ng/u1  
 RT: 8.093 min Scan# 851  
 Delta R.T. -0.012 min  
 Lab File: BM045323.D  
 Acq: 17 Apr 2024 18:54

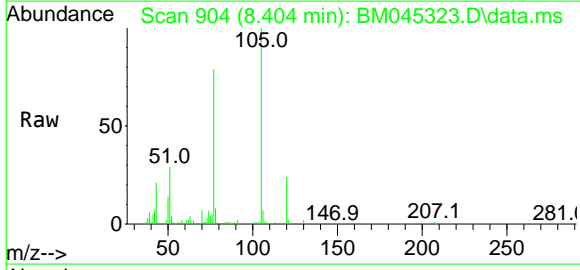
Tgt Ion: 45 Resp: 111224  
 Ion Ratio Lower Upper  
 45 100  
 77 17.4 13.4 20.0  
 79 13.6 10.1 15.1





#16  
 Acetophenone  
 Concen: 27.027 ng/ul  
 RT: 8.404 min Scan# 904  
 Delta R.T. 0.000 min  
 Lab File: BM045323.D  
 Acq: 17 Apr 2024 18:54

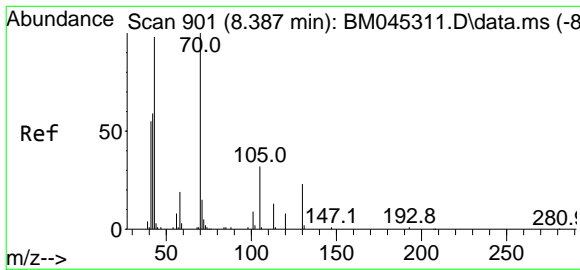
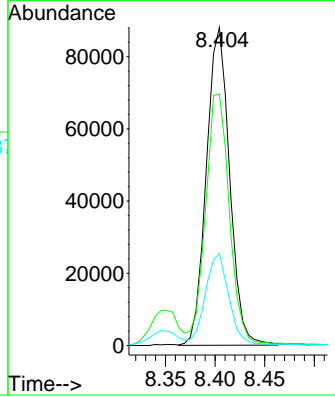
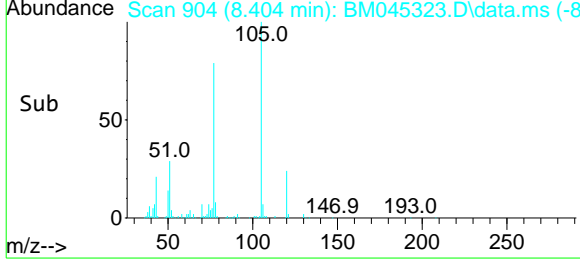
Instrument : BNA\_M  
 ClientSampleId : E0MG3MSD



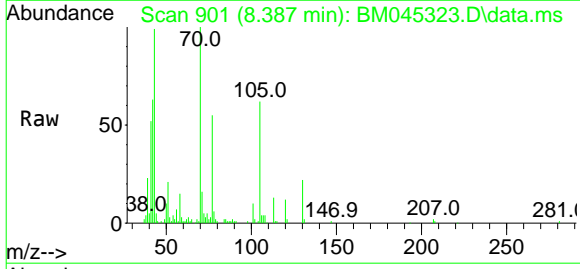
Tgt Ion: 105 Resp: 143676

Ion	Ratio	Lower	Upper
105	100		
77	79.0	65.8	98.6
51	28.9	21.9	32.9

Manual Integrations  
**APPROVED**  
 Reviewed By :Yogesh Patel 04/18/2024  
 Supervised By :mohammad ahmed 04/25/2024

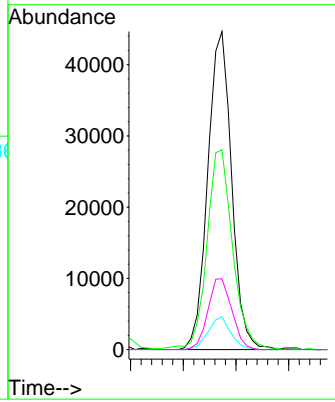
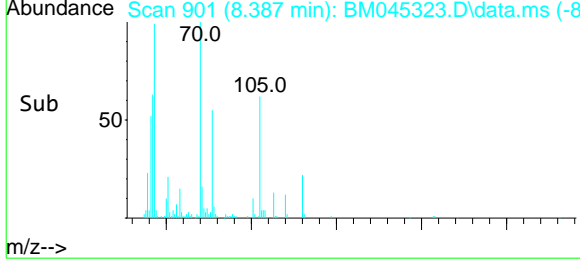


#17  
 N-Nitroso-di-n-propylamine  
 Concen: 28.017 ng/ul  
 RT: 8.387 min Scan# 901  
 Delta R.T. 0.000 min  
 Lab File: BM045323.D  
 Acq: 17 Apr 2024 18:54

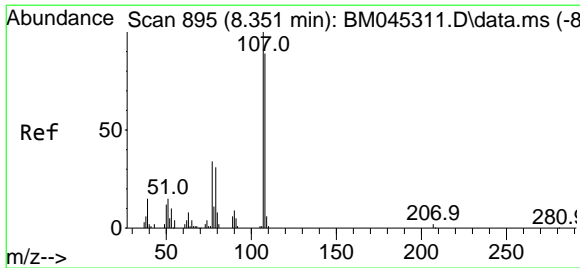


Tgt Ion: 70 Resp: 70322

Ion	Ratio	Lower	Upper
70	100		
42	62.8	43.2	64.8
101	10.3	6.4	9.6#
130	22.2	16.2	24.2

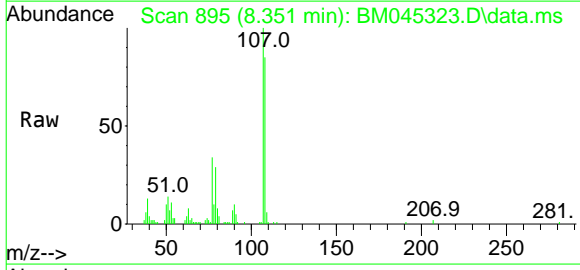






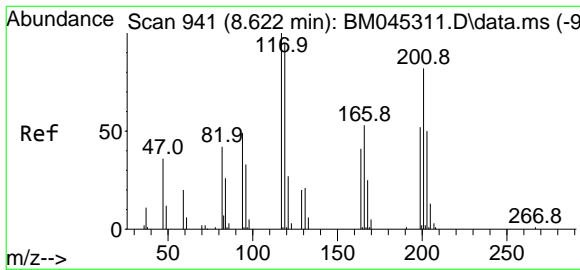
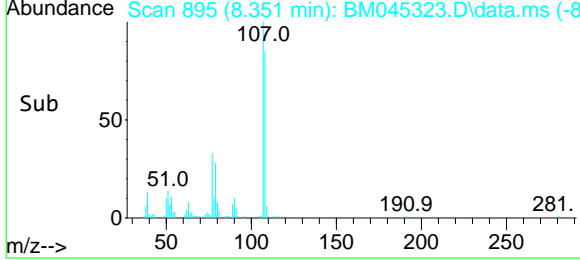
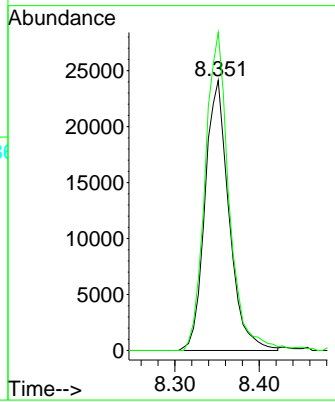
#18  
 4-Methylphenol  
 Concen: 13.896 ng/ul  
 RT: 8.351 min Scan# 895  
 Delta R.T. 0.000 min  
 Lab File: BM045323.D  
 Acq: 17 Apr 2024 18:54

Instrument : BNA\_M  
 ClientSampleId : E0MG3MSD

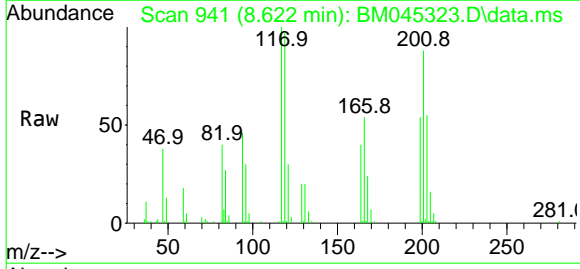


Tgt Ion:108 Resp: 47822  
 Ion Ratio Lower Upper  
 108 100  
 107 117.7 90.0 135.0

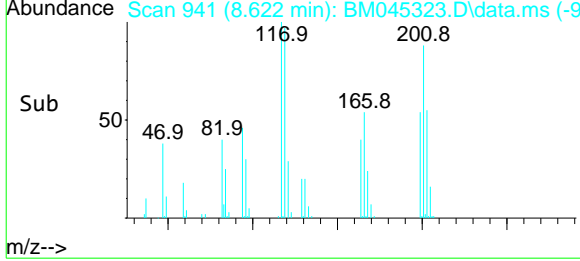
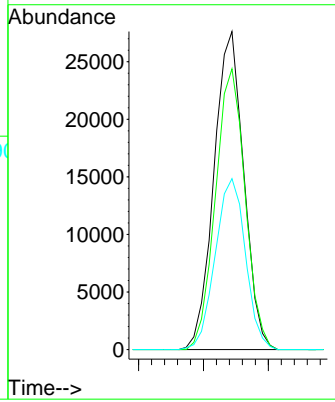
Manual Integrations  
**APPROVED**  
 Reviewed By :Yogesh Patel 04/18/2024  
 Supervised By :mohammad ahmed 04/25/2024

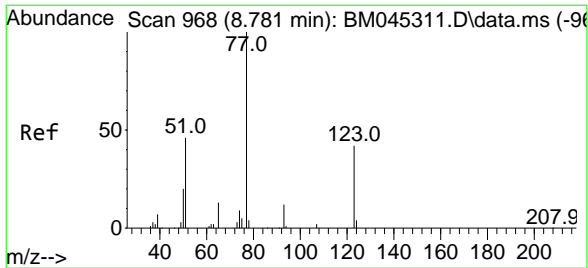


#19  
 Hexachloroethane  
 Concen: 29.234 ng/ul  
 RT: 8.622 min Scan# 941  
 Delta R.T. 0.000 min  
 Lab File: BM045323.D  
 Acq: 17 Apr 2024 18:54



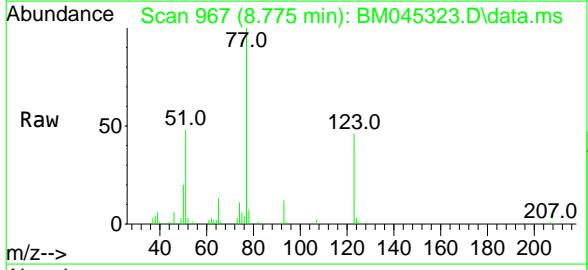
Tgt Ion:117 Resp: 44154  
 Ion Ratio Lower Upper  
 117 100  
 201 88.3 73.0 109.4  
 199 53.7 44.4 66.6





#22  
 Nitrobenzene  
 Concen: 31.969 ng/u1  
 RT: 8.775 min Scan# 968  
 Delta R.T. -0.006 min  
 Lab File: BM045323.D  
 Acq: 17 Apr 2024 18:54

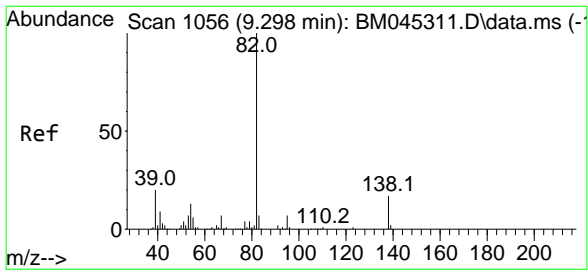
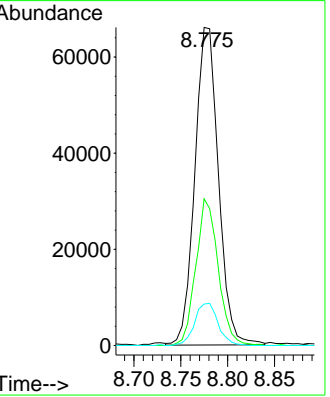
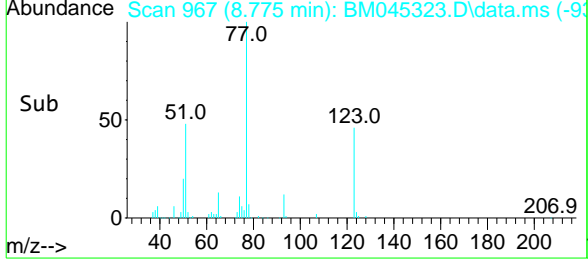
Instrument : BNA\_M  
 ClientSampleId : E0MG3MSD



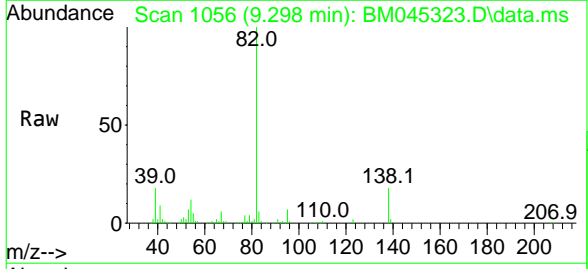
Tgt Ion: 77 Resp: 115799

Ion	Ratio	Lower	Upper
77	100		
123	46.1	37.4	56.2
65	13.0	10.7	16.1

Manual Integrations  
**APPROVED**  
 Reviewed By :Yogesh Patel 04/18/2024  
 Supervised By :mohammad ahmed 04/25/2024

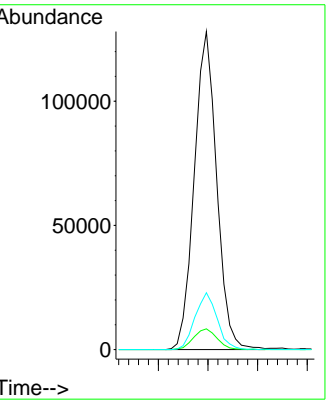
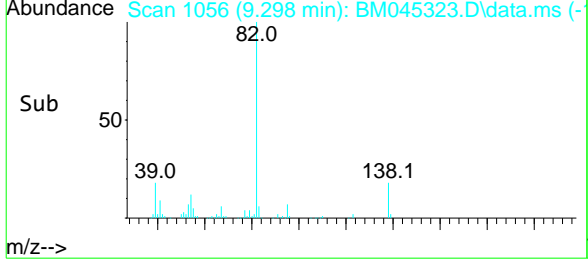


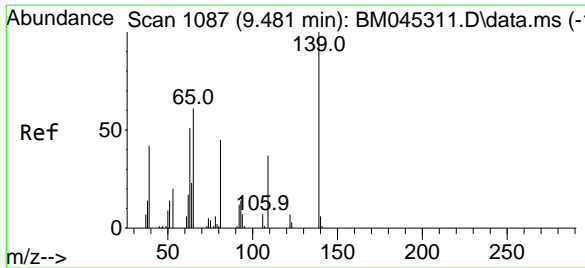
#23  
 Isophorone  
 Concen: 30.206 ng/u1  
 RT: 9.298 min Scan# 1056  
 Delta R.T. 0.000 min  
 Lab File: BM045323.D  
 Acq: 17 Apr 2024 18:54



Tgt Ion: 82 Resp: 201022

Ion	Ratio	Lower	Upper
82	100		
95	6.5	5.1	7.7
138	17.9	14.2	21.4





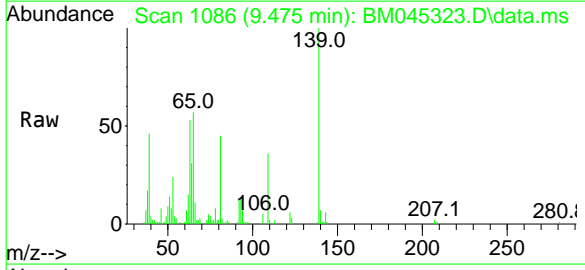
#25  
 2-Nitrophenol  
 Concen: 29.280 ng/ul  
 RT: 9.475 min Scan# 1086  
 Delta R.T. -0.006 min  
 Lab File: BM045323.D  
 Acq: 17 Apr 2024 18:54

Instrument :

BNA\_M

ClientSampleId :

E0MG3MSD



Tgt Ion:139 Resp: 50642

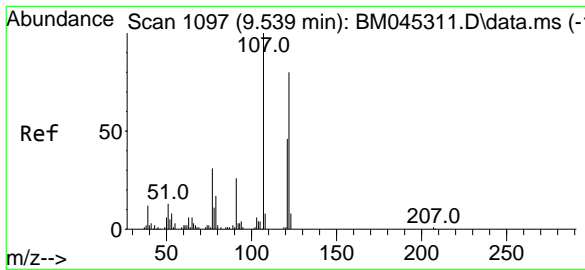
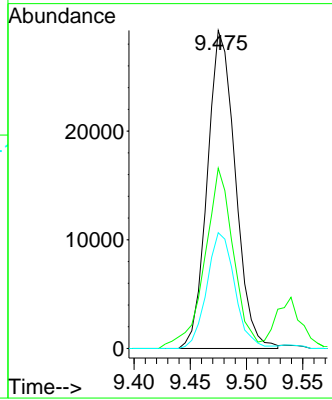
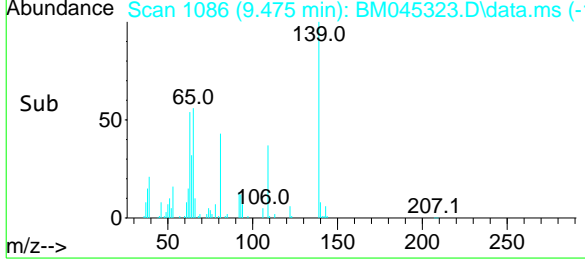
Ion	Ratio	Lower	Upper
139	100		
65	56.7	34.9	52.3
109	36.4	24.4	36.6

Manual Integrations

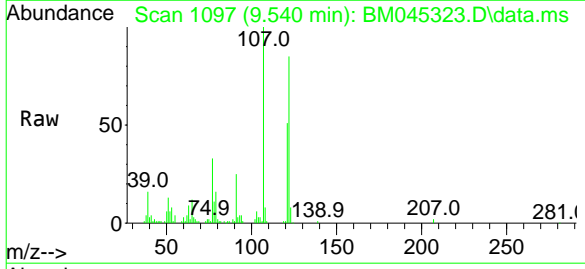
APPROVED

Reviewed By :Yogesh Patel 04/18/2024

Supervised By :mohammad ahmed 04/25/2024

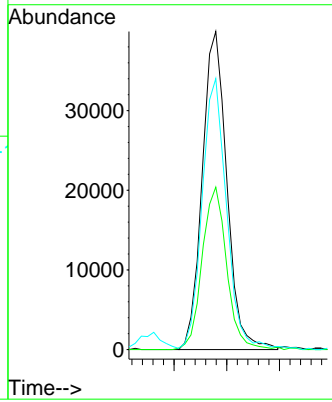
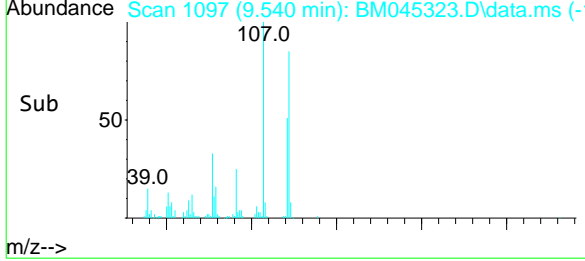


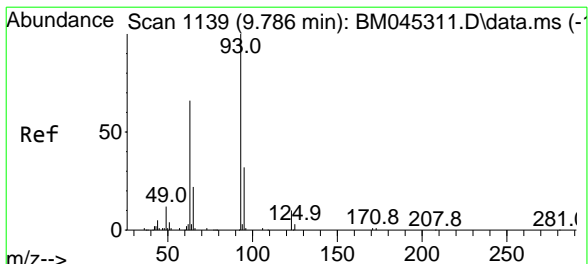
#26  
 2,4-Dimethylphenol  
 Concen: 19.456 ng/ul  
 RT: 9.540 min Scan# 1097  
 Delta R.T. 0.000 min  
 Lab File: BM045323.D  
 Acq: 17 Apr 2024 18:54



Tgt Ion:107 Resp: 64876

Ion	Ratio	Lower	Upper
107	100		
121	51.1	41.1	61.7
122	85.2	69.1	103.7





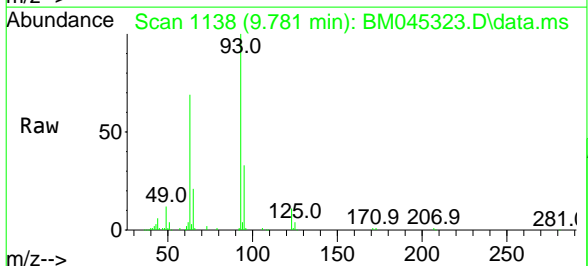
#27  
 Bis(2-Chloroethoxy)methane  
 Concen: 30.472 ng/u1  
 RT: 9.781 min Scan# 1139  
 Delta R.T. -0.006 min  
 Lab File: BM045323.D  
 Acq: 17 Apr 2024 18:54

Instrument :

BNA\_M

ClientSampleId :

E0MG3MSD

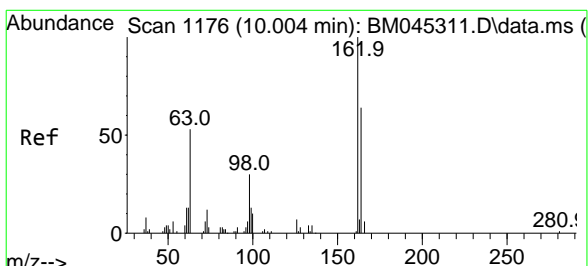
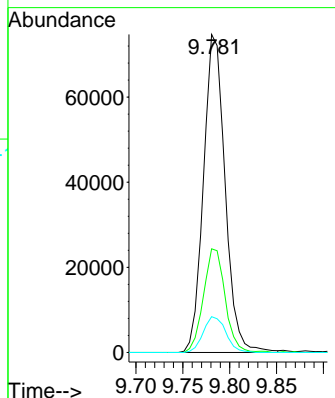
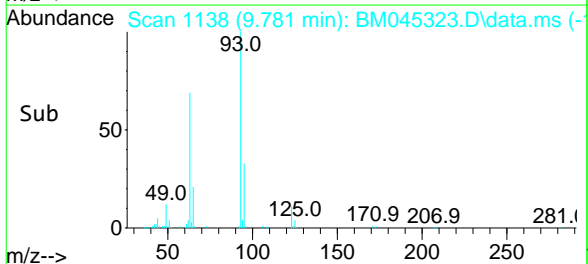


Tgt Ion: 93 Resp: 120223

Ion	Ratio	Lower	Upper
93	100		
95	32.6	26.9	40.3
123	11.3	9.1	13.7

Manual Integrations  
 APPROVED

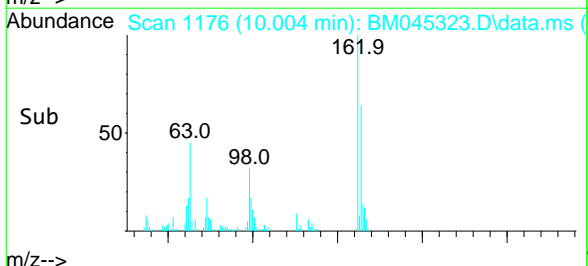
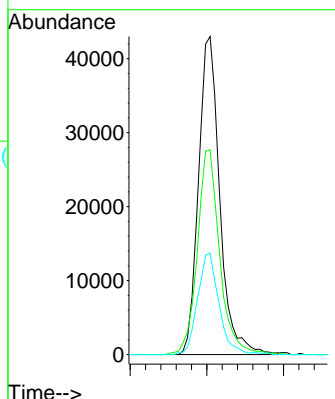
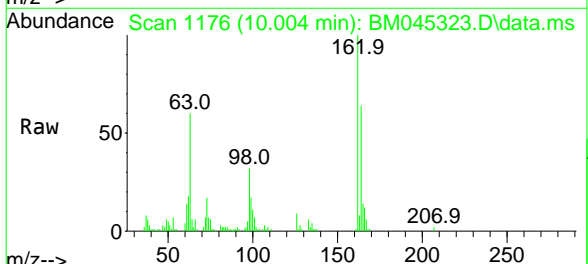
Reviewed By :Yogesh Patel 04/18/2024  
 Supervised By :mohammad ahmed 04/25/2024

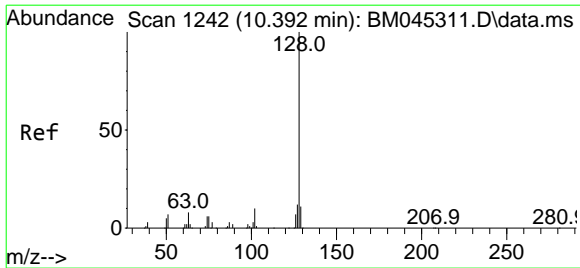


#29  
 2,4-Dichlorophenol  
 Concen: 28.706 ng/u1  
 RT: 10.004 min Scan# 1176  
 Delta R.T. 0.000 min  
 Lab File: BM045323.D  
 Acq: 17 Apr 2024 18:54

Tgt Ion:162 Resp: 82862

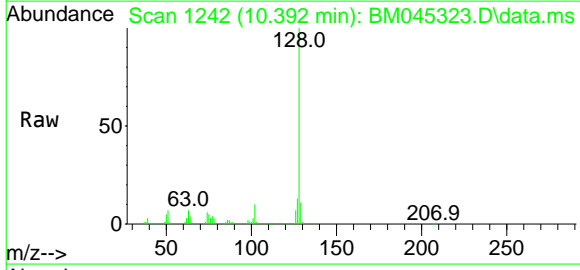
Ion	Ratio	Lower	Upper
162	100		
164	64.3	50.4	75.6
98	31.9	27.0	40.4





#30  
 Naphthalene  
 Concen: 30.036 ng/u1  
 RT: 10.392 min Scan# 1242  
 Delta R.T. 0.000 min  
 Lab File: BM045323.D  
 Acq: 17 Apr 2024 18:54

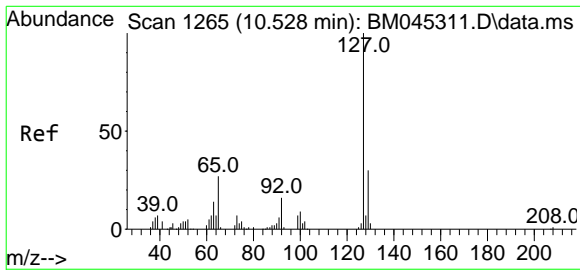
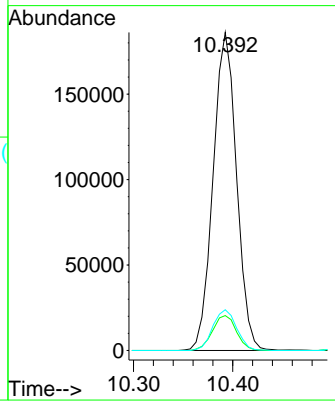
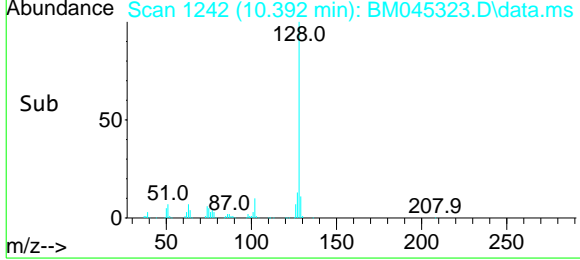
Instrument : BNA\_M  
 ClientSampleId : E0MG3MSD



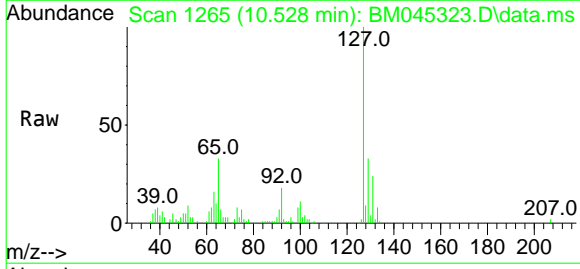
Tgt Ion:128 Resp: 305613

Ion	Ratio	Lower	Upper
128	100		
129	11.0	8.5	12.7
127	12.8	10.2	15.4

Manual Integrations  
**APPROVED**  
 Reviewed By :Yogesh Patel 04/18/2024  
 Supervised By :mohammad ahmed 04/25/2024

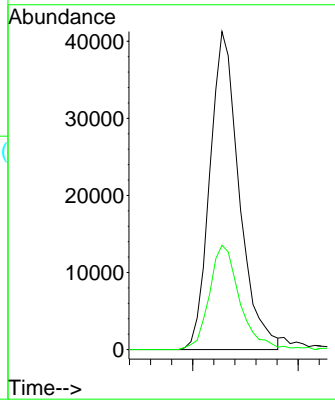
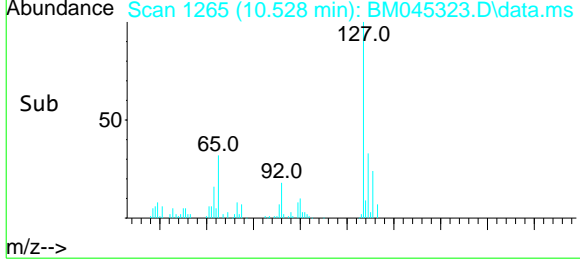


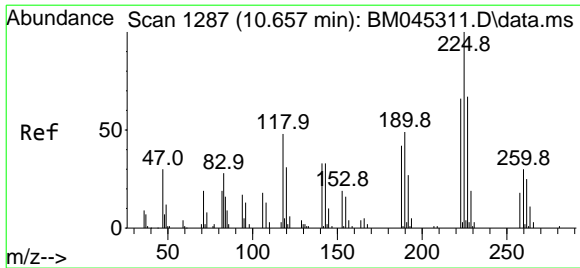
#32  
 4-Chloroaniline  
 Concen: 18.011 ng/u1  
 RT: 10.528 min Scan# 1265  
 Delta R.T. 0.000 min  
 Lab File: BM045323.D  
 Acq: 17 Apr 2024 18:54



Tgt Ion:127 Resp: 79718

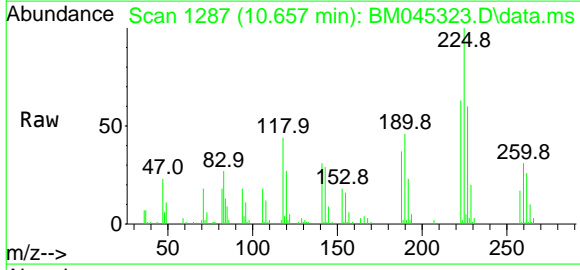
Ion	Ratio	Lower	Upper
127	100		
129	32.8	26.2	39.2





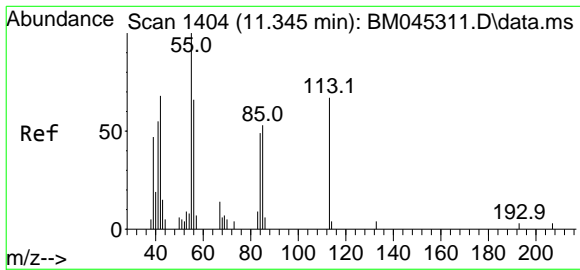
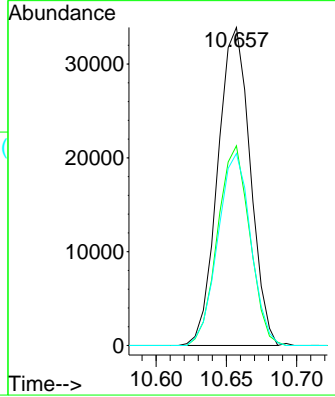
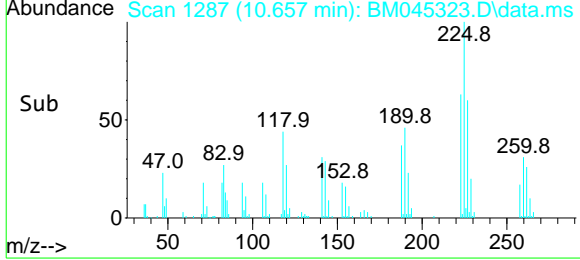
#33  
 Hexachlorobutadiene  
 Concen: 30.319 ng/ul  
 RT: 10.657 min Scan# 12  
 Delta R.T. 0.000 min  
 Lab File: BM045323.D  
 Acq: 17 Apr 2024 18:54

Instrument : BNA\_M  
 ClientSampleId : E0MG3MSD

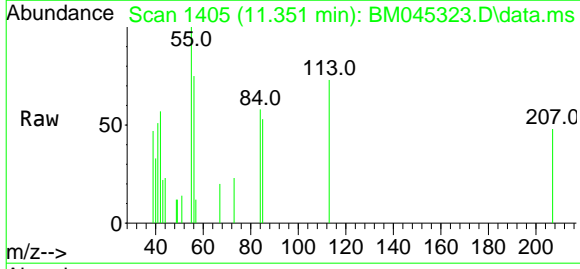


Tgt Ion: 225 Resp: 54415  
 Ion Ratio Lower Upper  
 225 100  
 223 65.0 45.3 67.9  
 227 60.4 47.6 71.4

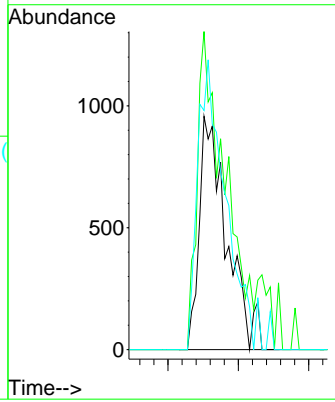
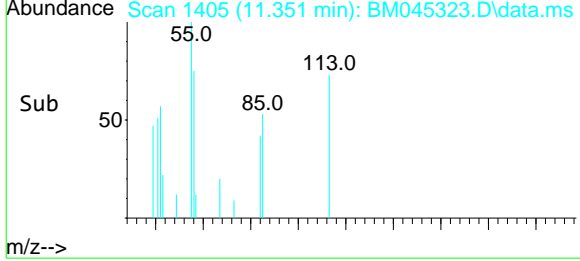
Manual Integrations  
**APPROVED**  
 Reviewed By :Yogesh Patel 04/18/2024  
 Supervised By :mohammad ahmed 04/25/2024

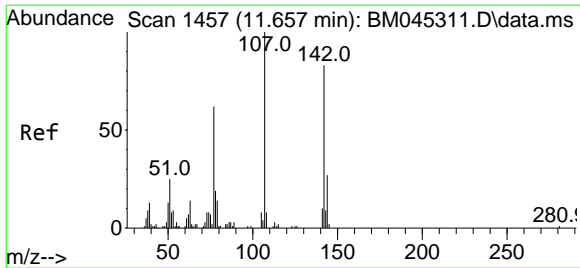


#34  
 Caprolactam  
 Concen: 2.672 ng/ul m  
 RT: 11.351 min Scan# 1405  
 Delta R.T. 0.006 min  
 Lab File: BM045323.D  
 Acq: 17 Apr 2024 18:54



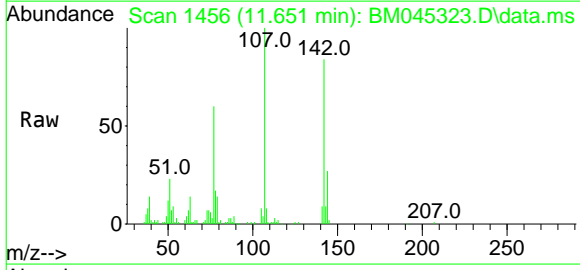
Tgt Ion: 113 Resp: 2604  
 Ion Ratio Lower Upper  
 113 100  
 55 136.4 125.4 188.0  
 56 102.5 91.8 137.8





#35  
 4-Chloro-3-methylphenol  
 Concen: 24.186 ng/ul  
 RT: 11.651 min Scan# 1457  
 Delta R.T. -0.006 min  
 Lab File: BM045323.D  
 Acq: 17 Apr 2024 18:54

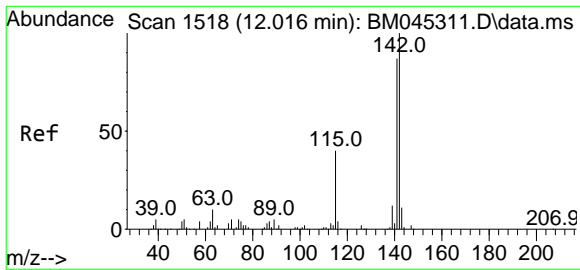
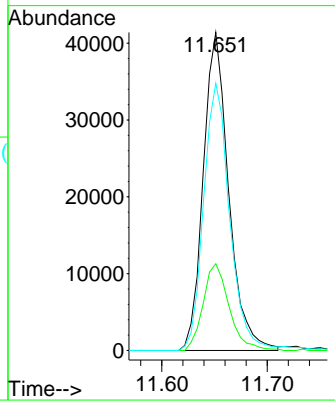
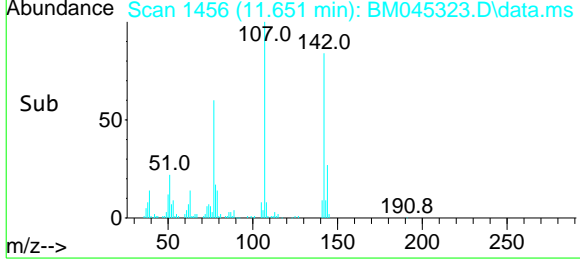
Instrument : BNA\_M  
 ClientSampleId : E0MG3MSD



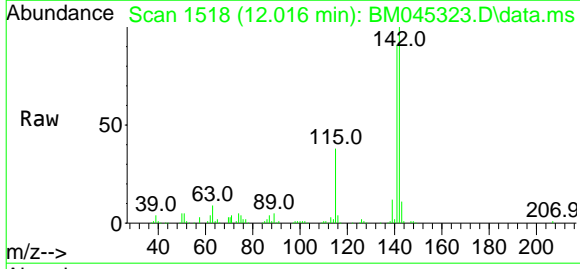
Tgt Ion: 107 Resp: 69401

Ion	Ratio	Lower	Upper
107	100		
144	27.3	22.8	34.2
142	84.0	69.8	104.6

Manual Integrations  
**APPROVED**  
 Reviewed By :Yogesh Patel 04/18/2024  
 Supervised By :mohammad ahmed 04/25/2024

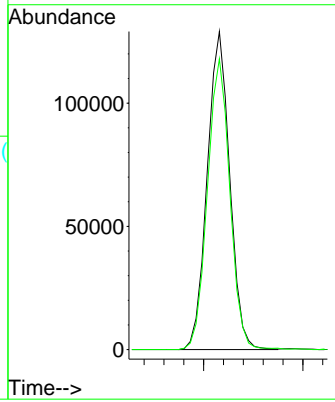
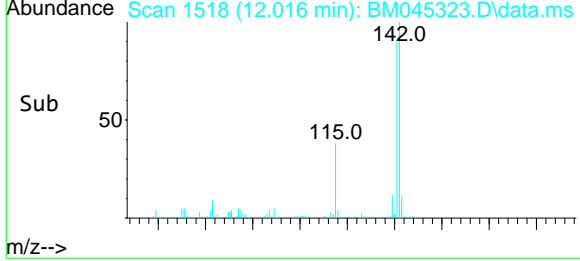


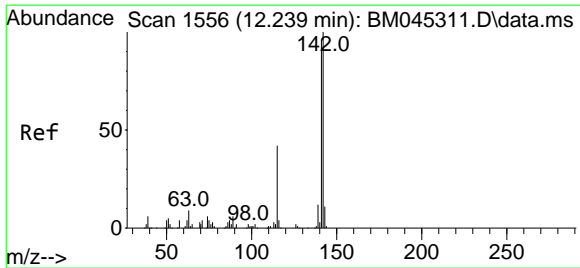
#36  
 2-Methylnaphthalene  
 Concen: 30.571 ng/ul  
 RT: 12.016 min Scan# 1518  
 Delta R.T. 0.000 min  
 Lab File: BM045323.D  
 Acq: 17 Apr 2024 18:54



Tgt Ion: 142 Resp: 203098

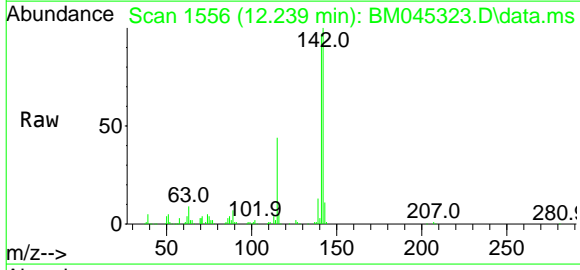
Ion	Ratio	Lower	Upper
142	100		
141	91.4	72.3	108.5





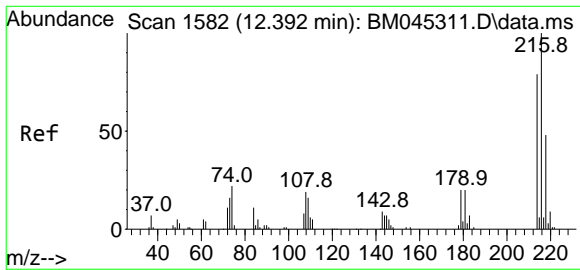
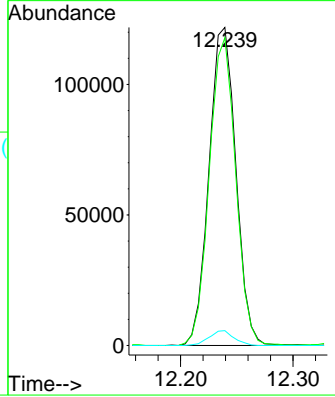
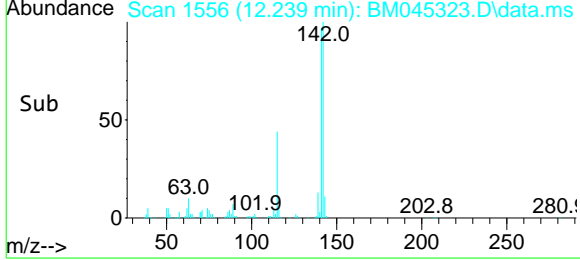
#37  
 1-Methylnaphthalene  
 Concen: 30.101 ng/ul  
 RT: 12.239 min Scan# 1515  
 Delta R.T. 0.000 min  
 Lab File: BM045323.D  
 Acq: 17 Apr 2024 18:54

Instrument : BNA\_M  
 ClientSampleId : E0MG3MSD

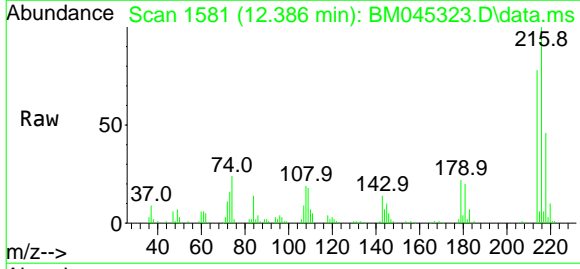


Tgt Ion:142 Resp: 202368  
 Ion Ratio Lower Upper  
 142 100  
 141 96.8 77.2 115.8  
 116 4.7 3.2 4.8

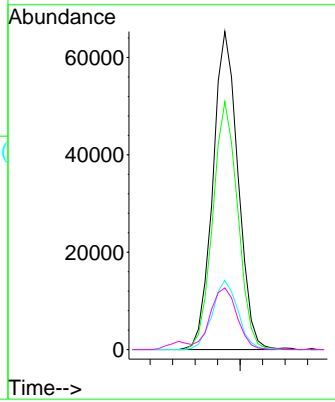
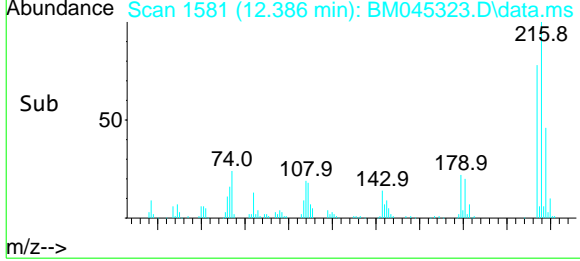
Manual Integrations  
**APPROVED**  
 Reviewed By :Yogesh Patel 04/18/2024  
 Supervised By :mohammad ahmed 04/25/2024



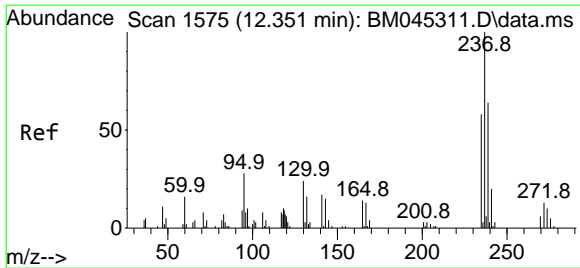
#39  
 1,2,4,5-Tetrachlorobenzene  
 Concen: 32.683 ng/ul  
 RT: 12.386 min Scan# 1581  
 Delta R.T. -0.006 min  
 Lab File: BM045323.D  
 Acq: 17 Apr 2024 18:54



Tgt Ion:216 Resp: 101678  
 Ion Ratio Lower Upper  
 216 100  
 214 78.0 63.5 95.3  
 179 21.8 16.6 25.0  
 108 19.4 15.0 22.4

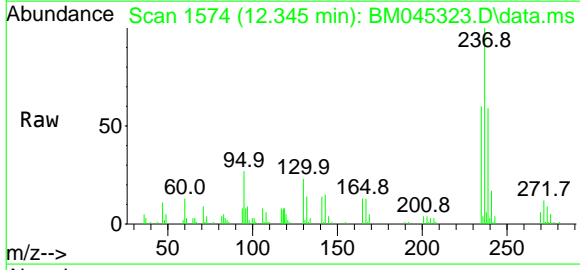






#40  
 Hexachlorocyclopentadiene  
 Concen: 23.155 ng/ul  
 RT: 12.345 min Scan# 1574  
 Delta R.T. -0.006 min  
 Lab File: BM045323.D  
 Acq: 17 Apr 2024 18:54

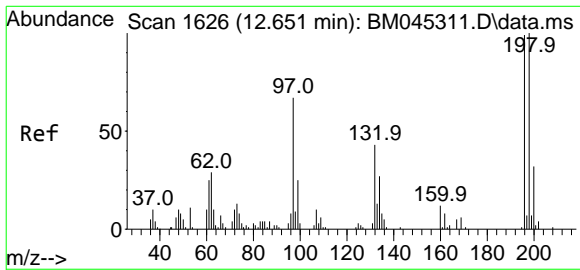
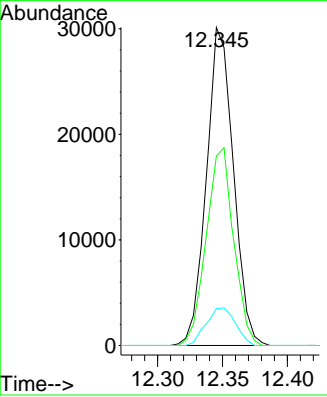
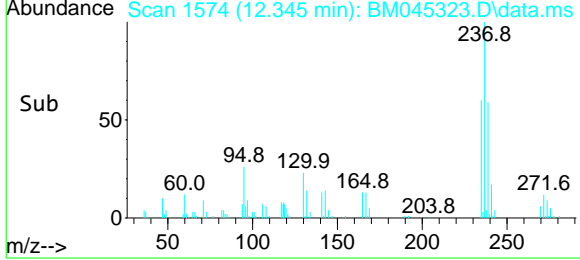
Instrument : BNA\_M  
 Client Sample Id : E0MG3MSD



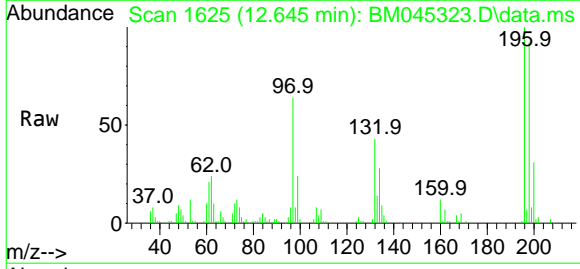
Tgt Ion: 237 Resp: 43608

Ion	Ratio	Lower	Upper
237	100		
235	59.6	51.3	76.9
272	12.3	10.1	15.1

Manual Integrations  
**APPROVED**  
 Reviewed By :Yogesh Patel 04/18/2024  
 Supervised By :mohammad ahmed 04/25/2024

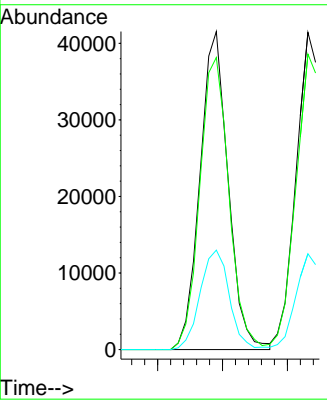
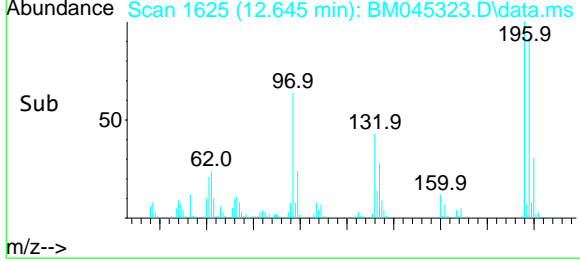


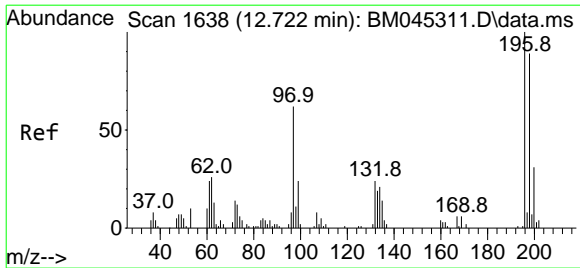
#41  
 2,4,6-Trichlorophenol  
 Concen: 30.942 ng/ul  
 RT: 12.645 min Scan# 1625  
 Delta R.T. -0.006 min  
 Lab File: BM045323.D  
 Acq: 17 Apr 2024 18:54



Tgt Ion: 196 Resp: 62795

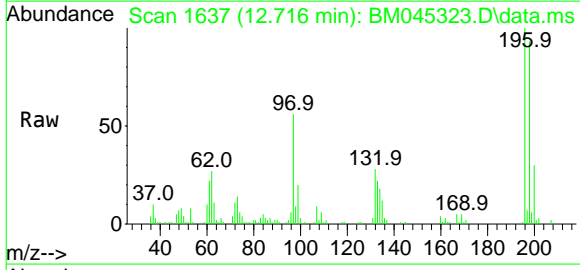
Ion	Ratio	Lower	Upper
196	100		
198	91.8	79.4	119.2
200	31.3	25.0	37.4





#42  
 2,4,5-Trichlorophenol  
 Concen: 31.334 ng/ul  
 RT: 12.716 min Scan# 1637  
 Delta R.T. -0.006 min  
 Lab File: BM045323.D  
 Acq: 17 Apr 2024 18:54

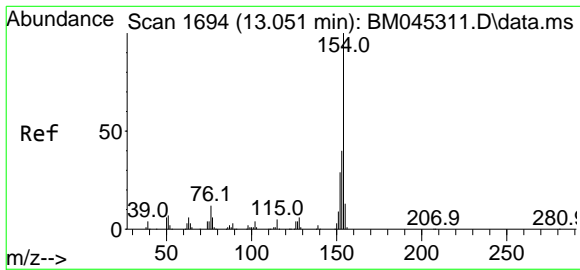
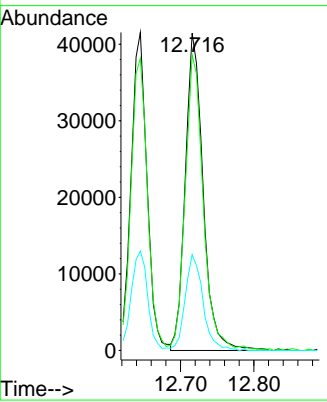
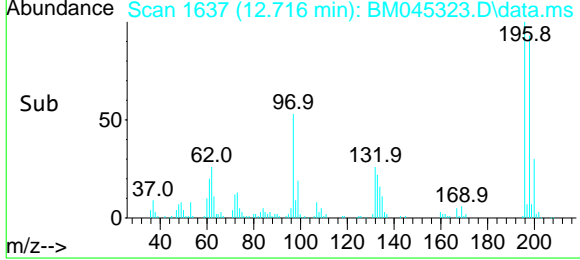
Instrument : BNA\_M  
 Client Sample Id : E0MG3MSD



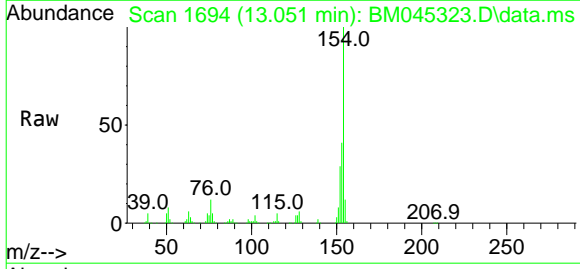
Tgt Ion: 196 Resp: 70066

Ion	Ratio	Lower	Upper
196	100		
198	93.1	79.9	119.9
200	30.2	25.6	38.4

Manual Integrations  
**APPROVED**  
 Reviewed By : Yogesh Patel 04/18/2024  
 Supervised By : mohammad ahmed 04/25/2024

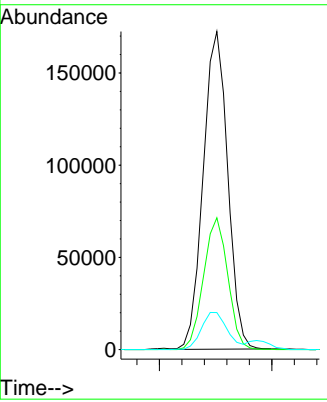
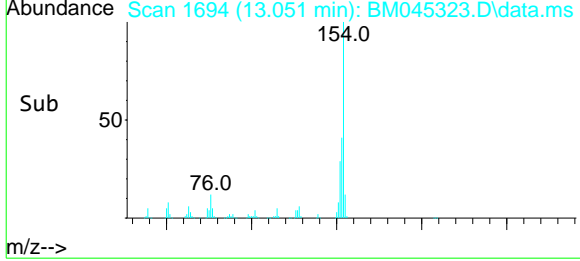


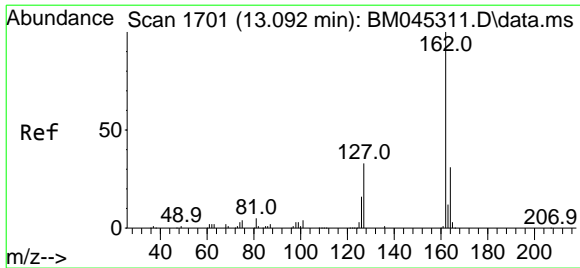
#43  
 1,1'-Biphenyl  
 Concen: 32.443 ng/ul  
 RT: 13.051 min Scan# 1694  
 Delta R.T. 0.000 min  
 Lab File: BM045323.D  
 Acq: 17 Apr 2024 18:54



Tgt Ion: 154 Resp: 260610

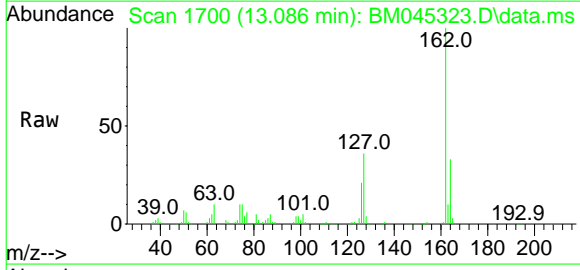
Ion	Ratio	Lower	Upper
154	100		
153	41.5	31.6	47.4
76	11.6	10.4	15.6





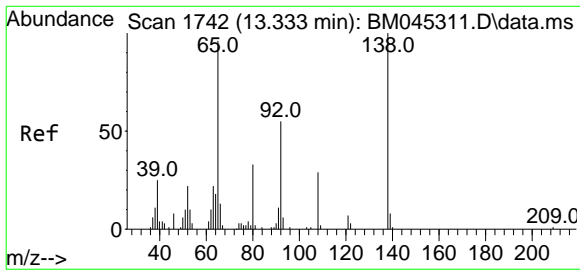
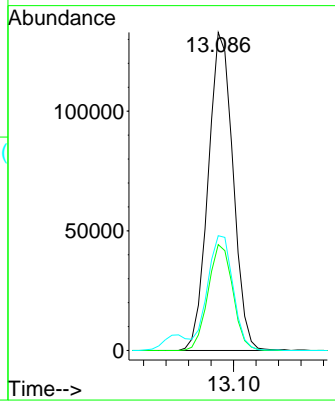
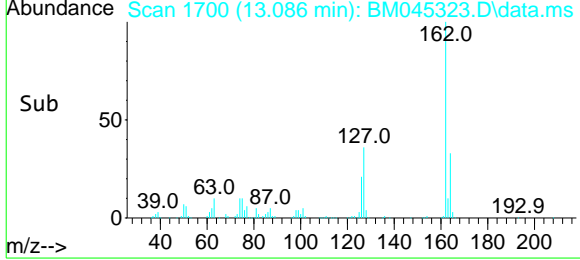
#44  
 2-Chloronaphthalene  
 Concen: 31.251 ng/ul  
 RT: 13.086 min Scan# 17  
 Delta R.T. -0.006 min  
 Lab File: BM045323.D  
 Acq: 17 Apr 2024 18:54

Instrument : BNA\_M  
 ClientSampleId : E0MG3MSD

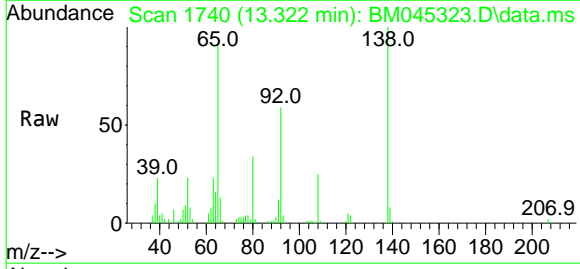


Tgt Ion: 162 Resp: 203953  
 Ion Ratio Lower Upper  
 162 100  
 164 33.3 26.1 39.1  
 127 36.1 30.1 45.1

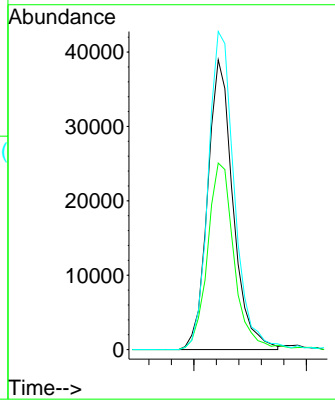
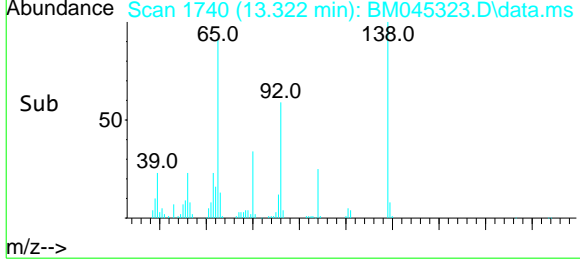
Manual Integrations  
**APPROVED**  
 Reviewed By :Yogesh Patel 04/18/2024  
 Supervised By :mohammad ahmed 04/25/2024

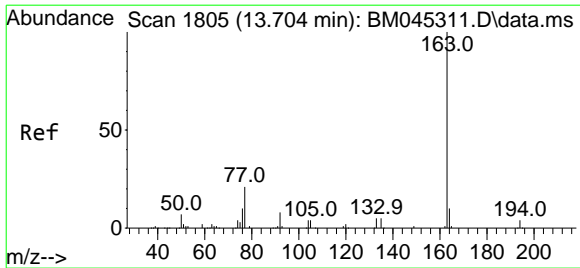


#45  
 2-Nitroaniline  
 Concen: 33.990 ng/ul  
 RT: 13.322 min Scan# 1740  
 Delta R.T. -0.012 min  
 Lab File: BM045323.D  
 Acq: 17 Apr 2024 18:54



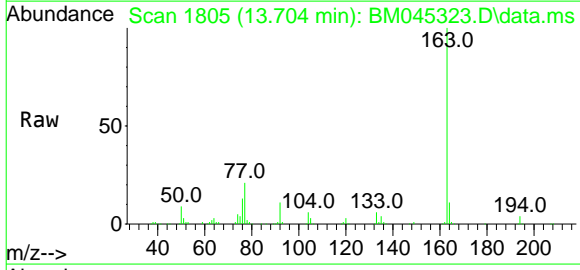
Tgt Ion: 65 Resp: 61233  
 Ion Ratio Lower Upper  
 65 100  
 92 64.4 55.2 82.8  
 138 109.8 93.0 139.4





#47  
 Dimethylphthalate  
 Concen: 31.939 ng/ul  
 RT: 13.704 min Scan# 1805  
 Delta R.T. 0.000 min  
 Lab File: BM045323.D  
 Acq: 17 Apr 2024 18:54

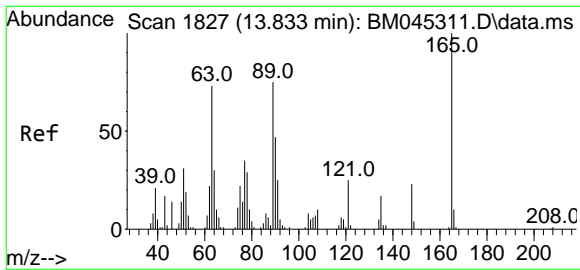
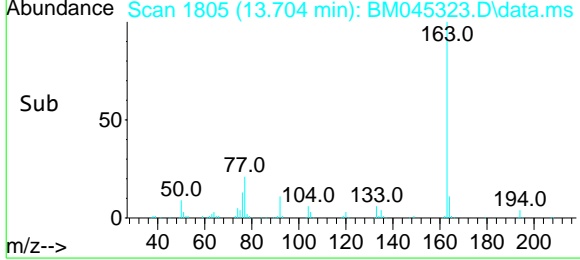
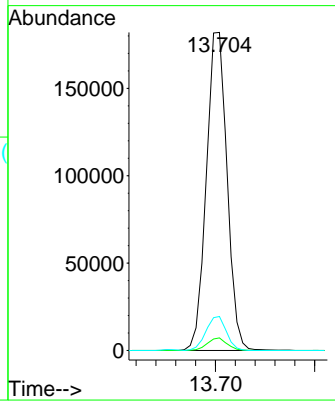
Instrument : BNA\_M  
 ClientSampleId : E0MG3MSD



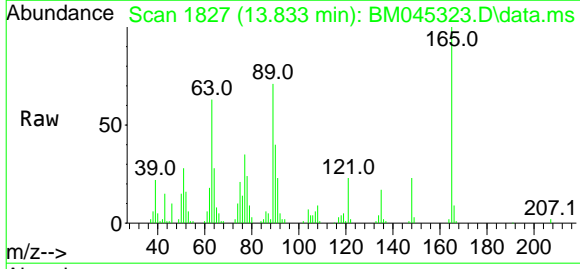
Tgt Ion:163 Resp: 264417

Ion	Ratio	Lower	Upper
163	100		
194	4.0	2.8	4.2
164	10.7	7.8	11.8

Manual Integrations  
**APPROVED**  
 Reviewed By :Yogesh Patel 04/18/2024  
 Supervised By :mohammad ahmed 04/25/2024

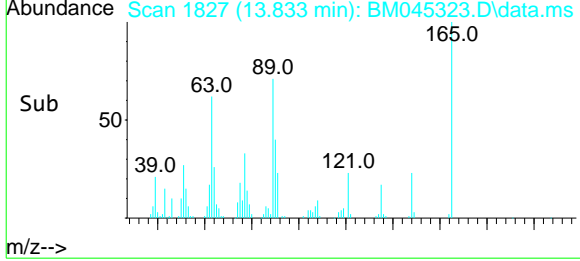
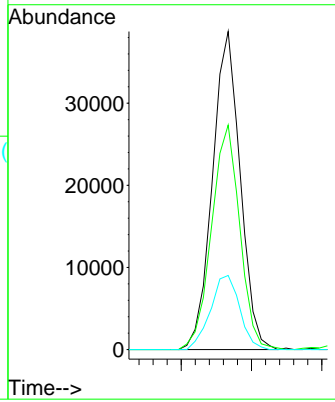


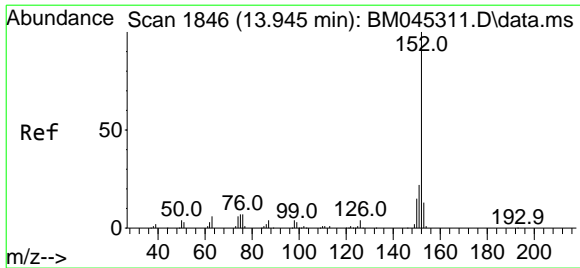
#48  
 2,6-Dinitrotoluene  
 Concen: 32.739 ng/ul  
 RT: 13.833 min Scan# 1827  
 Delta R.T. 0.000 min  
 Lab File: BM045323.D  
 Acq: 17 Apr 2024 18:54



Tgt Ion:165 Resp: 53125

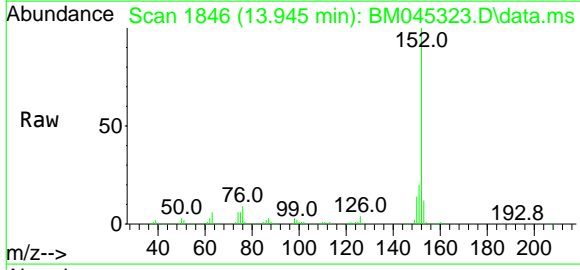
Ion	Ratio	Lower	Upper
165	100		
89	70.6	45.0	67.4
121	23.3	18.0	27.0





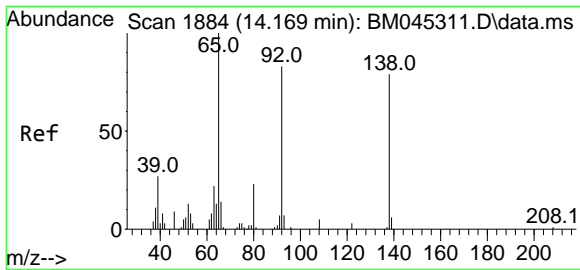
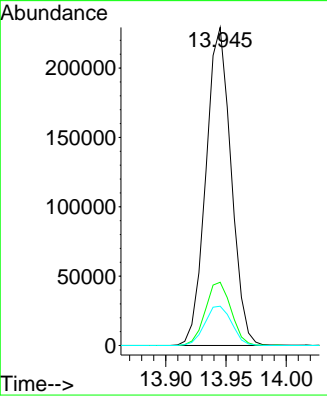
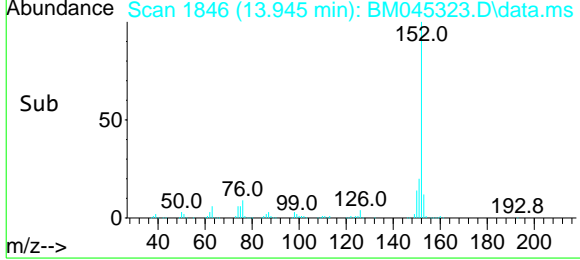
#50  
 Acenaphthylene  
 Concen: 30.549 ng/ul  
 RT: 13.945 min Scan# 1883  
 Delta R.T. 0.000 min  
 Lab File: BM045323.D  
 Acq: 17 Apr 2024 18:54

Instrument : BNA\_M  
 ClientSampleId : E0MG3MSD

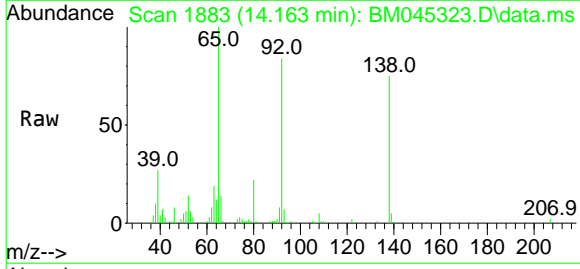


Tgt Ion:152 Resp: 333862  
 Ion Ratio Lower Upper  
 152 100  
 151 19.9 16.0 24.0  
 153 12.4 10.2 15.2

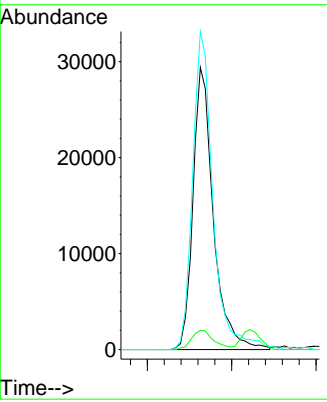
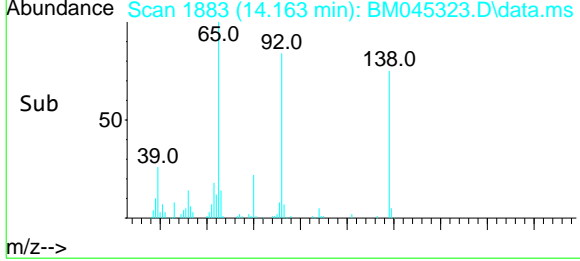
Manual Integrations  
**APPROVED**  
 Reviewed By :Yogesh Patel 04/18/2024  
 Supervised By :mohammad ahmed 04/25/2024

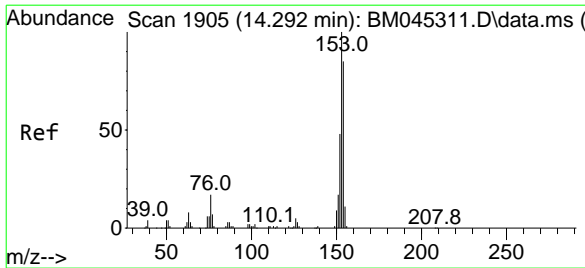


#51  
 3-Nitroaniline  
 Concen: 27.812 ng/ul  
 RT: 14.163 min Scan# 1883  
 Delta R.T. -0.006 min  
 Lab File: BM045323.D  
 Acq: 17 Apr 2024 18:54



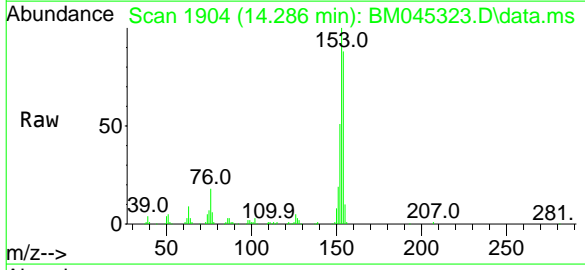
Tgt Ion:138 Resp: 49227  
 Ion Ratio Lower Upper  
 138 100  
 108 6.9 6.5 9.7  
 92 112.7 81.4 122.0





#52  
 Acenaphthene  
 Concen: 30.463 ng/u1  
 RT: 14.286 min Scan# 1905  
 Delta R.T. -0.006 min  
 Lab File: BM045323.D  
 Acq: 17 Apr 2024 18:54

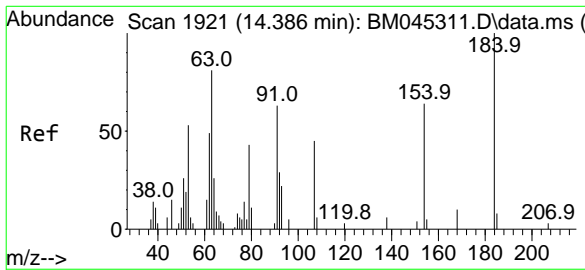
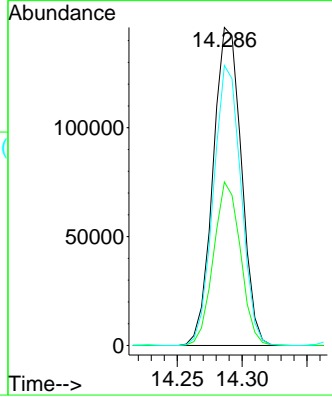
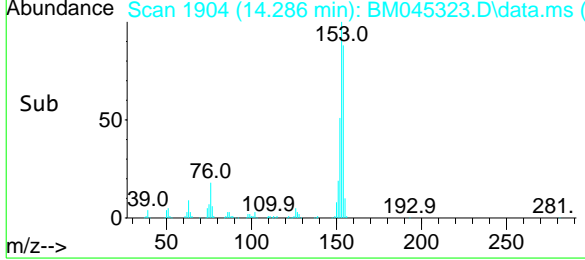
Instrument :  
 BNA\_M  
 ClientSampleId :  
 E0MG3MSD



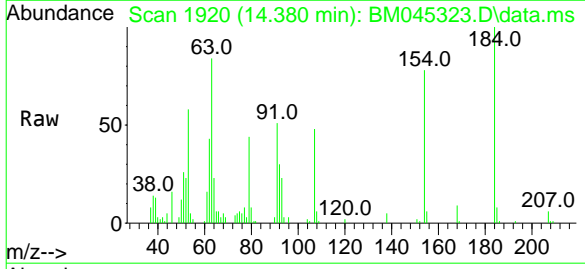
Tgt Ion:153 Resp: 222148  
 Ion Ratio Lower Upper  
 153 100  
 152 51.4 38.6 58.0  
 154 88.0 69.4 104.2

Manual Integrations  
 APPROVED

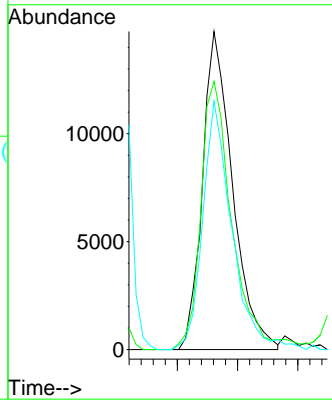
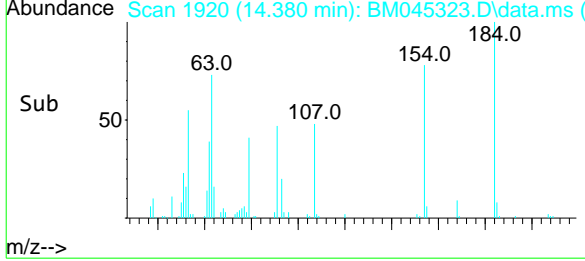
Reviewed By :Yogesh Patel 04/18/2024  
 Supervised By :mohammad ahmed 04/25/2024

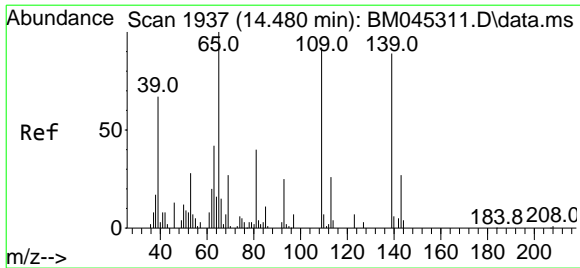


#53  
 2,4-Dinitrophenol  
 Concen: 26.511 ng/u1  
 RT: 14.380 min Scan# 1920  
 Delta R.T. -0.006 min  
 Lab File: BM045323.D  
 Acq: 17 Apr 2024 18:54



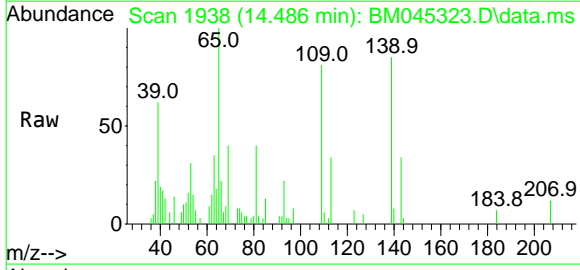
Tgt Ion:184 Resp: 25576  
 Ion Ratio Lower Upper  
 184 100  
 63 84.3 56.9 85.3  
 154 78.0 50.3 75.5#





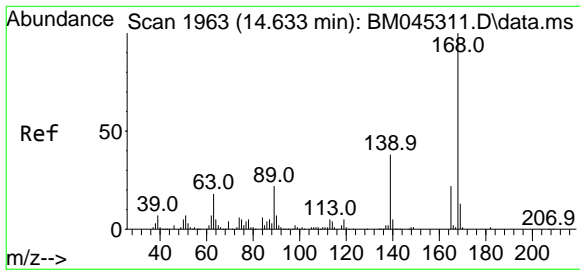
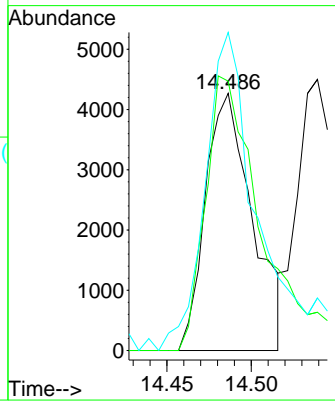
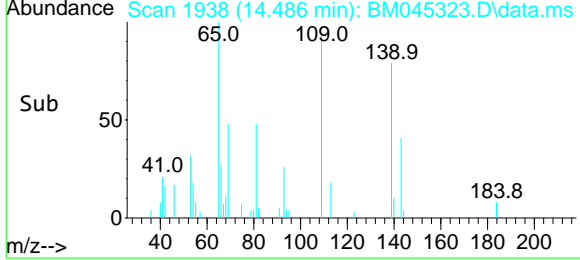
#55  
 4-Nitrophenol  
 Concen: 5.693 ng/ul  
 RT: 14.486 min Scan# 1937  
 Delta R.T. 0.006 min  
 Lab File: BM045323.D  
 Acq: 17 Apr 2024 18:54

Instrument : BNA\_M  
 ClientSampleId : E0MG3MSD

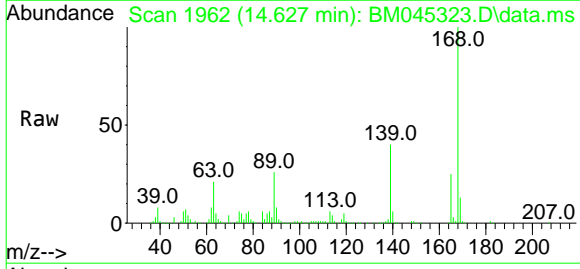


Tgt Ion	Ratio	Lower	Upper
109	100		
139	104.7	107.7	161.5
65	123.7	96.3	144.5

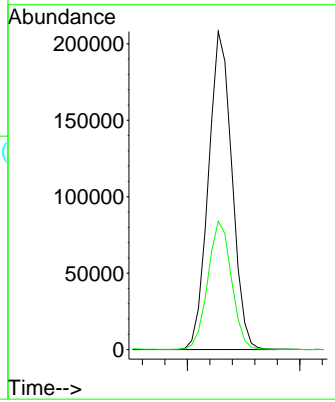
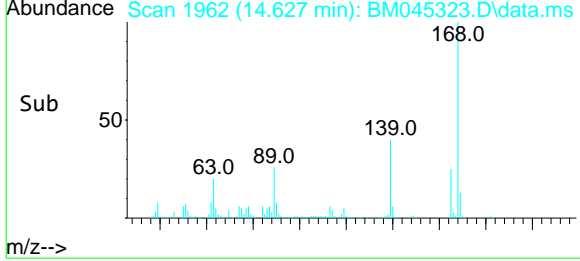
Manual Integrations  
**APPROVED**  
 Reviewed By :Yogesh Patel 04/18/2024  
 Supervised By :mohammad ahmed 04/25/2024

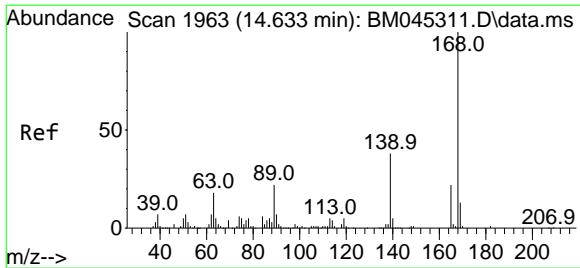


#56  
 Dibenzofuran  
 Concen: 30.307 ng/ul  
 RT: 14.627 min Scan# 1962  
 Delta R.T. -0.006 min  
 Lab File: BM045323.D  
 Acq: 17 Apr 2024 18:54



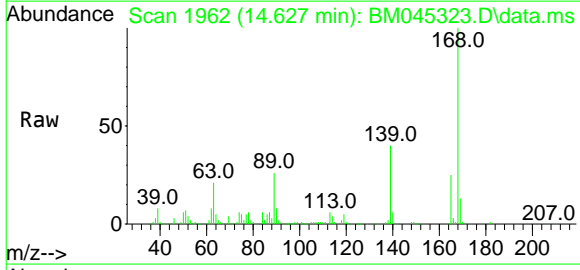
Tgt Ion	Ratio	Lower	Upper
168	100		
139	40.4	30.6	46.0





#57  
 2,4-Dinitrotoluene  
 Concen: 31.476 ng/ul  
 RT: 14.627 min Scan# 1962  
 Delta R.T. -0.006 min  
 Lab File: BM045323.D  
 Acq: 17 Apr 2024 18:54

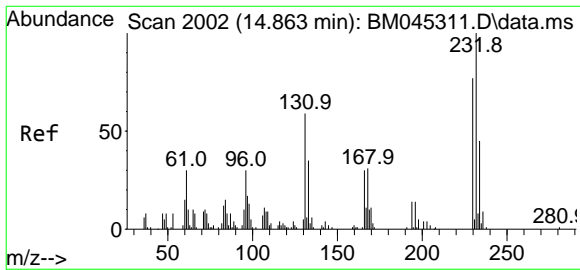
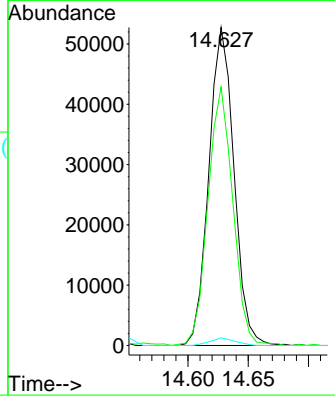
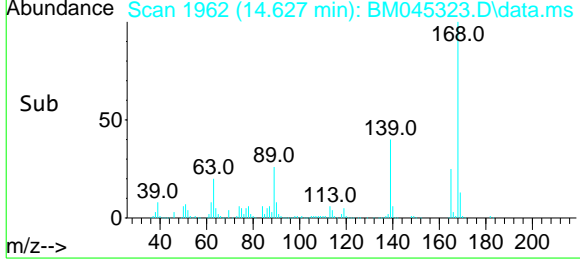
Instrument : BNA\_M  
 ClientSampleId : E0MG3MSD



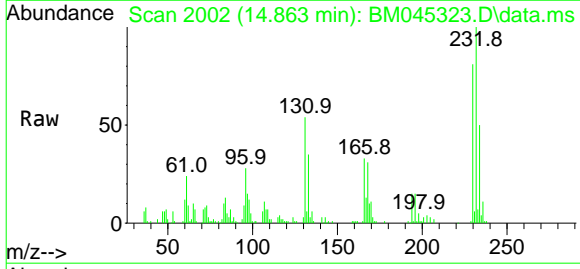
Tgt Ion:165 Resp: 76453

Ion	Ratio	Lower	Upper
165	100		
63	81.3	52.0	78.0
182	2.4	2.3	3.5

Manual Integrations  
**APPROVED**  
 Reviewed By :Yogesh Patel 04/18/2024  
 Supervised By :mohammad ahmed 04/25/2024

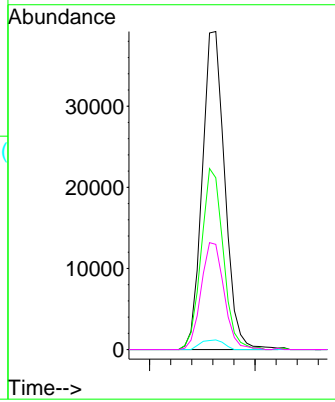
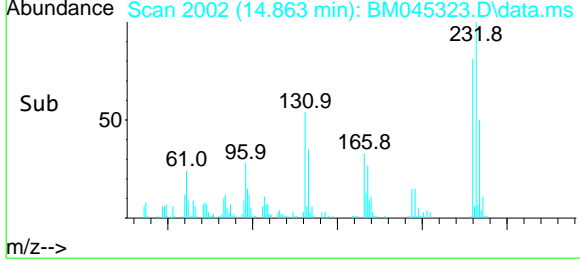


#58  
 2,3,4,6-Tetrachlorophenol  
 Concen: 30.463 ng/ul  
 RT: 14.863 min Scan# 2002  
 Delta R.T. 0.000 min  
 Lab File: BM045323.D  
 Acq: 17 Apr 2024 18:54

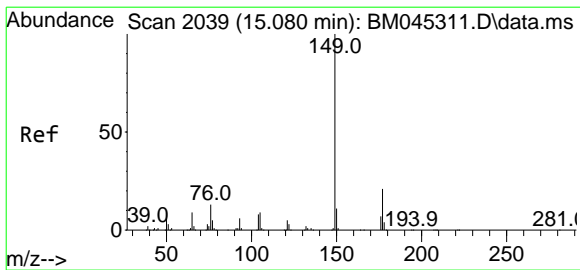


Tgt Ion:232 Resp: 58299

Ion	Ratio	Lower	Upper
232	100		
131	54.0	43.4	65.0
130	3.0	2.6	4.0
166	33.1	25.6	38.4

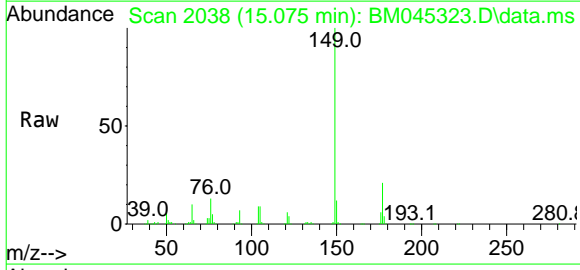






#59  
 Diethylphthalate  
 Concen: 33.238 ng/u1  
 RT: 15.075 min Scan# 2038  
 Delta R.T. -0.006 min  
 Lab File: BM045323.D  
 Acq: 17 Apr 2024 18:54

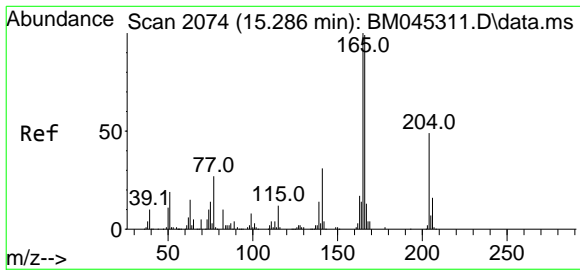
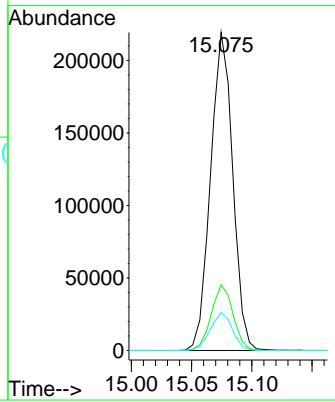
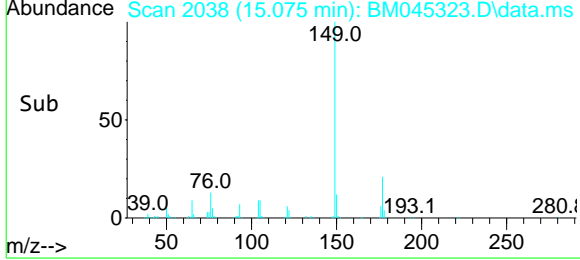
Instrument : BNA\_M  
 ClientSampleId : E0MG3MSD



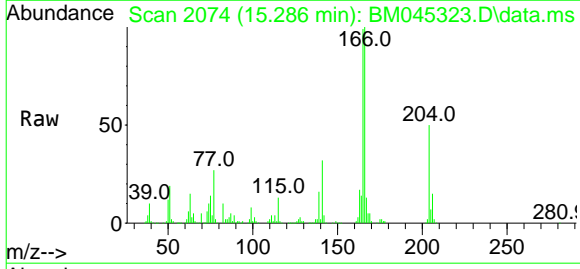
Tgt Ion:149 Resp: 280726

Ion	Ratio	Lower	Upper
149	100		
177	20.7	16.4	24.6
150	11.9	10.3	15.5

Manual Integrations  
**APPROVED**  
 Reviewed By :Yogesh Patel 04/18/2024  
 Supervised By :mohammad ahmed 04/25/2024

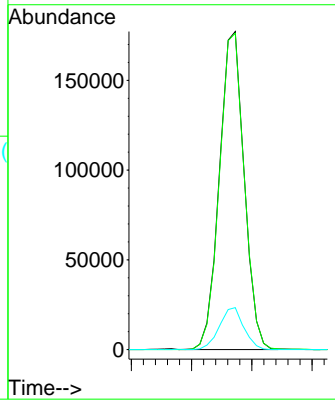
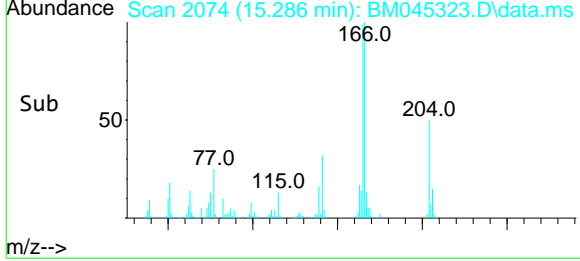


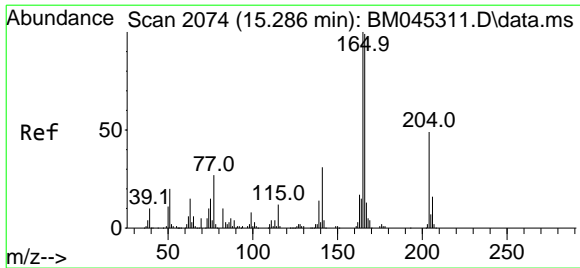
#61  
 Fluorene  
 Concen: 30.109 ng/u1  
 RT: 15.286 min Scan# 2074  
 Delta R.T. 0.000 min  
 Lab File: BM045323.D  
 Acq: 17 Apr 2024 18:54



Tgt Ion:166 Resp: 253234

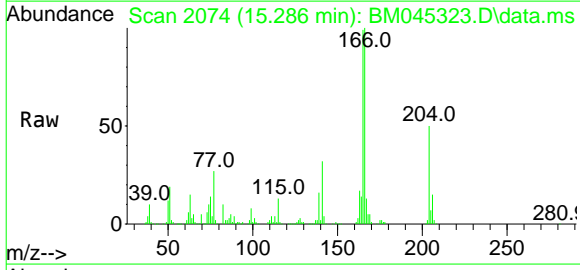
Ion	Ratio	Lower	Upper
166	100		
165	99.5	80.5	120.7
167	13.2	11.0	16.6





#62  
 4-Chlorophenyl-phenylether  
 Concen: 29.117 ng/ul  
 RT: 15.286 min Scan# 2074  
 Delta R.T. 0.000 min  
 Lab File: BM045323.D  
 Acq: 17 Apr 2024 18:54

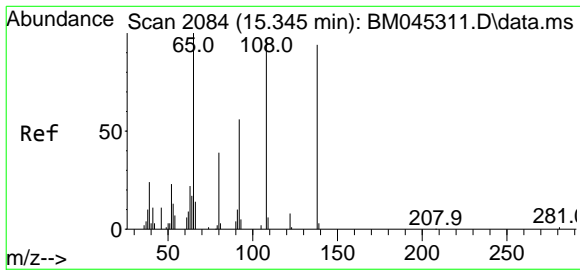
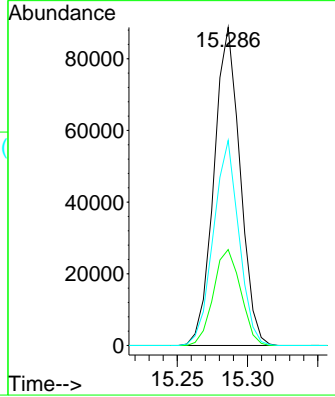
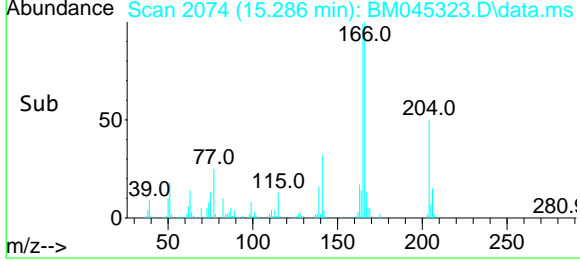
Instrument : BNA\_M  
 ClientSampleId : E0MG3MSD



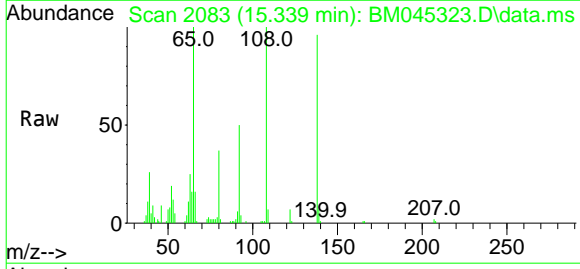
Tgt Ion:204 Resp: 114784

Ion	Ratio	Lower	Upper
204	100		
206	30.2	24.9	37.3
141	64.5	46.2	69.2

Manual Integrations  
**APPROVED**  
 Reviewed By :Yogesh Patel 04/18/2024  
 Supervised By :mohammad ahmed 04/25/2024

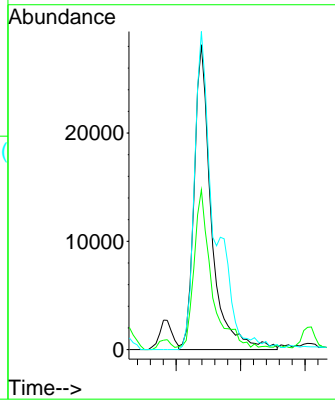
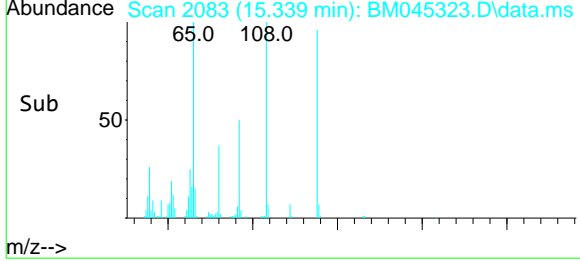


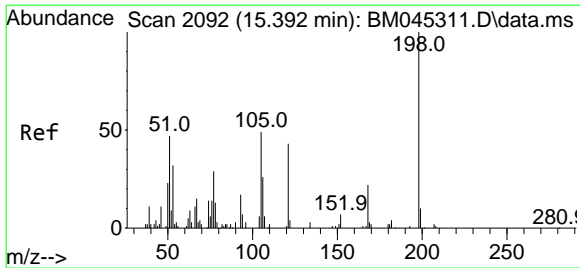
#63  
 4-Nitroaniline  
 Concen: 32.377 ng/ul m  
 RT: 15.339 min Scan# 2083  
 Delta R.T. -0.006 min  
 Lab File: BM045323.D  
 Acq: 17 Apr 2024 18:54



Tgt Ion:138 Resp: 52102

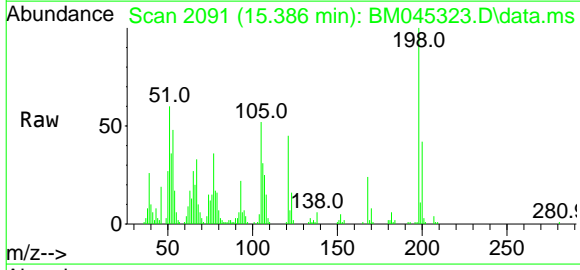
Ion	Ratio	Lower	Upper
138	100		
92	52.4	39.8	59.6
108	104.3	66.4	99.6#





#66  
 4,6-Dinitro-2-methylphenol  
 Concen: 29.515 ng/ul  
 RT: 15.386 min Scan# 2091  
 Delta R.T. -0.006 min  
 Lab File: BM045323.D  
 Acq: 17 Apr 2024 18:54

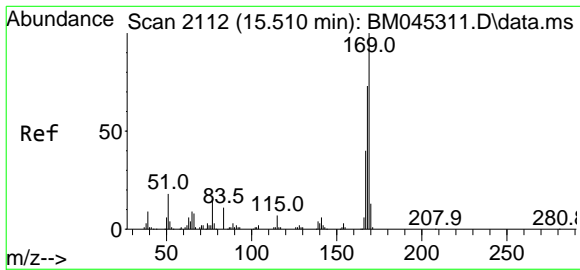
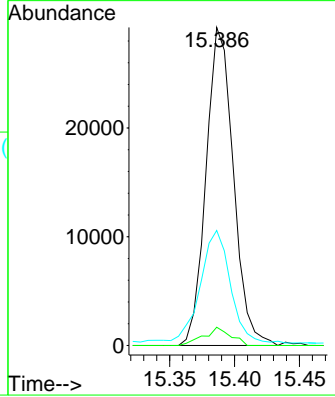
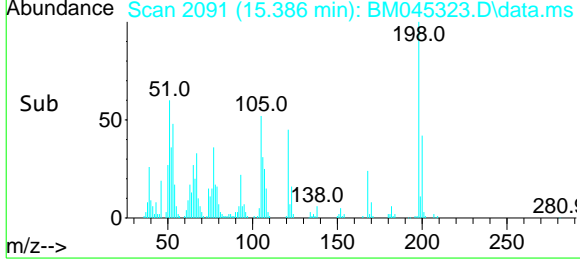
Instrument : BNA\_M  
 ClientSampleId : E0MG3MSD



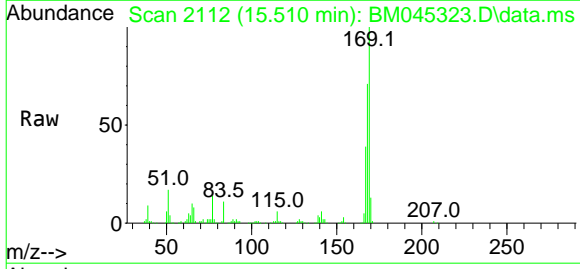
Tgt Ion:198 Resp: 42879

Ion	Ratio	Lower	Upper
198	100		
182	5.7	3.8	5.6
77	36.2	24.6	37.0

Manual Integrations  
**APPROVED**  
 Reviewed By :Yogesh Patel 04/18/2024  
 Supervised By :mohammad ahmed 04/25/2024

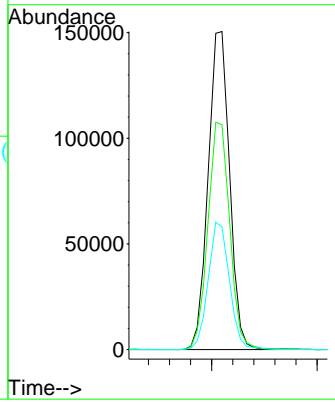
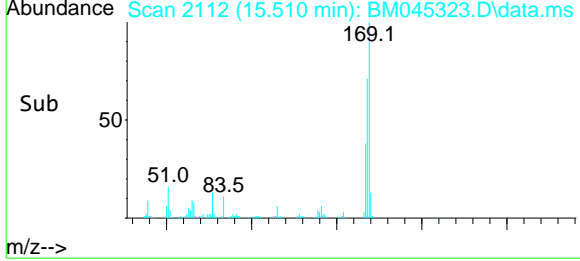


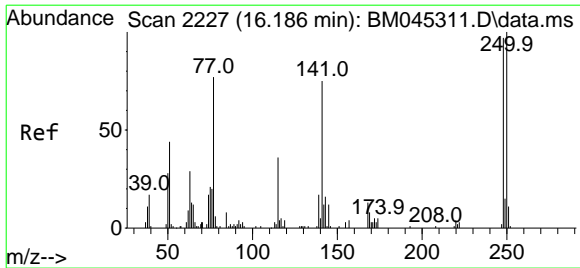
#67  
 N-Nitrosodiphenylamine  
 Concen: 34.504 ng/ul  
 RT: 15.510 min Scan# 2112  
 Delta R.T. 0.000 min  
 Lab File: BM045323.D  
 Acq: 17 Apr 2024 18:54



Tgt Ion:169 Resp: 212957

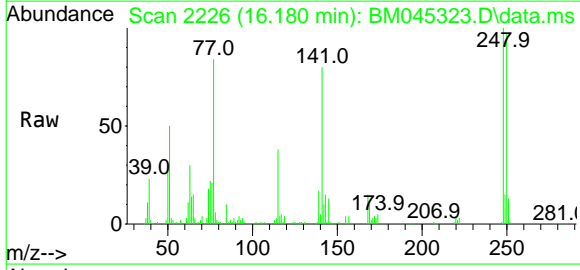
Ion	Ratio	Lower	Upper
169	100		
168	70.7	56.7	85.1
167	38.6	31.2	46.8





#68  
 4-Bromophenyl-phenylether  
 Concen: 33.375 ng/ul  
 RT: 16.180 min Scan# 2226  
 Delta R.T. -0.006 min  
 Lab File: BM045323.D  
 Acq: 17 Apr 2024 18:54

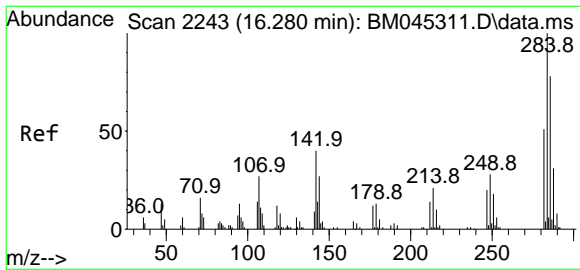
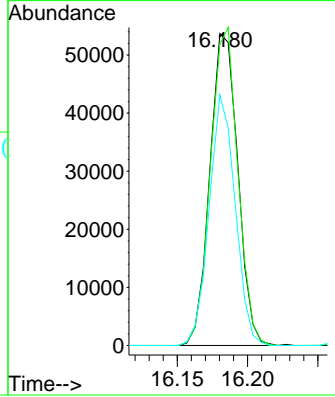
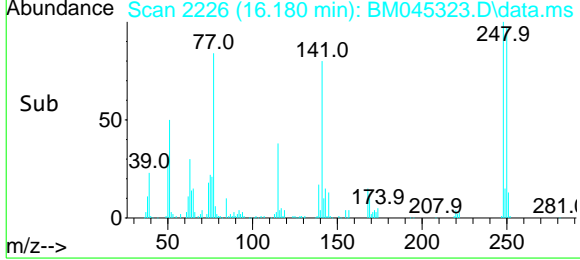
Instrument : BNA\_M  
 ClientSampleId : E0MG3MSD



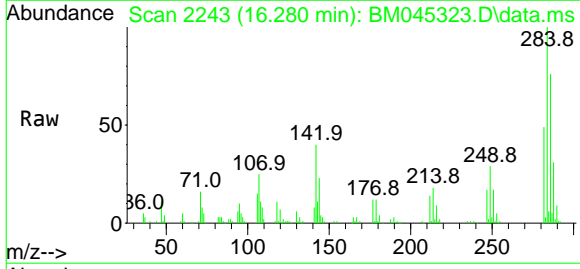
Tgt Ion: 248 Resp: 74368

Ion	Ratio	Lower	Upper
248	100		
250	96.5	81.0	121.6
141	80.3	55.1	82.7

Manual Integrations  
**APPROVED**  
 Reviewed By :Yogesh Patel 04/18/2024  
 Supervised By :mohammad ahmed 04/25/2024

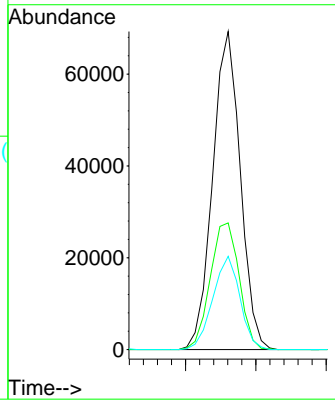
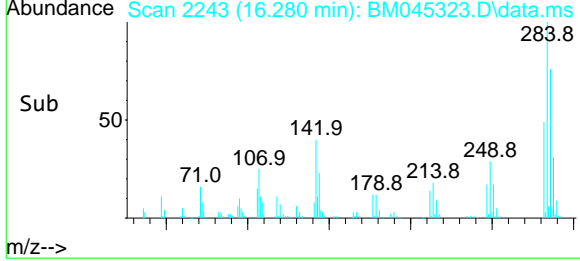


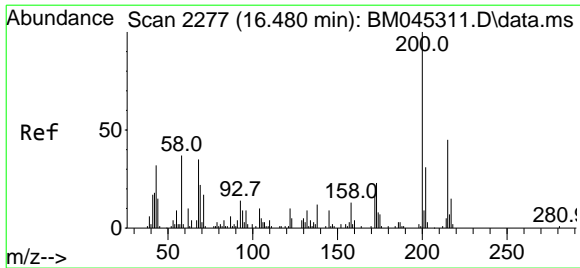
#69  
 Hexachlorobenzene  
 Concen: 32.685 ng/ul  
 RT: 16.280 min Scan# 2243  
 Delta R.T. 0.000 min  
 Lab File: BM045323.D  
 Acq: 17 Apr 2024 18:54



Tgt Ion: 284 Resp: 94739

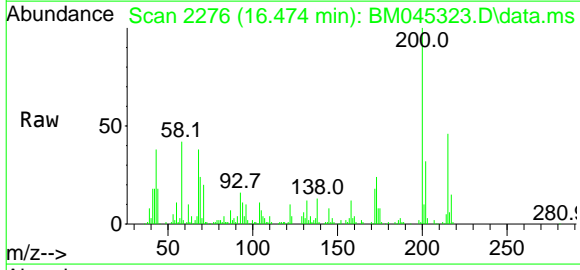
Ion	Ratio	Lower	Upper
284	100		
142	37.6	27.3	40.9
249	27.7	23.6	35.4





#70  
 Atrazine  
 Concen: 29.213 ng/u1  
 RT: 16.474 min Scan# 2277  
 Delta R.T. -0.006 min  
 Lab File: BM045323.D  
 Acq: 17 Apr 2024 18:54

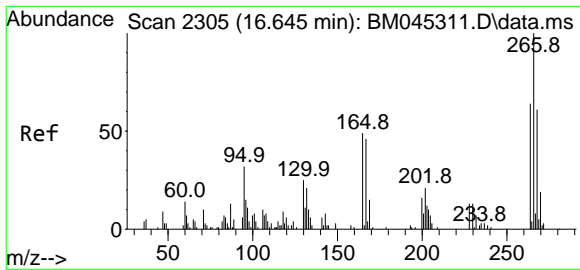
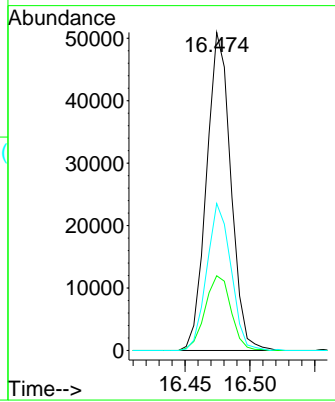
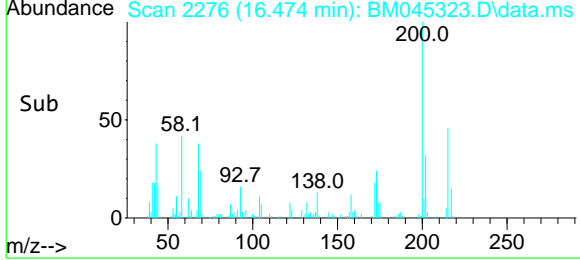
Instrument : BNA\_M  
 ClientSampleId : E0MG3MSD



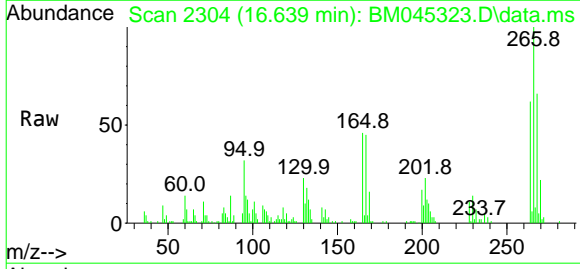
Tgt Ion: 200 Resp: 66321

Ion	Ratio	Lower	Upper
200	100		
173	23.5	20.3	30.5
215	46.2	37.9	56.9

Manual Integrations  
**APPROVED**  
 Reviewed By :Yogesh Patel 04/18/2024  
 Supervised By :mohammad ahmed 04/25/2024

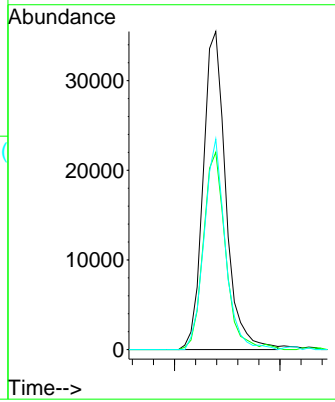
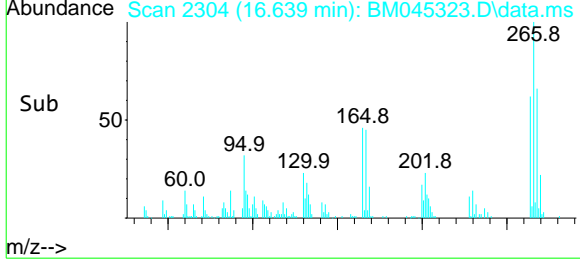


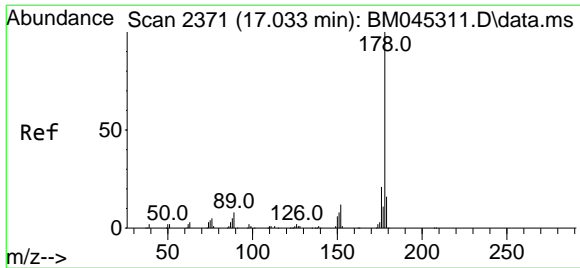
#71  
 Pentachlorophenol  
 Concen: 30.079 ng/u1  
 RT: 16.639 min Scan# 2304  
 Delta R.T. -0.006 min  
 Lab File: BM045323.D  
 Acq: 17 Apr 2024 18:54



Tgt Ion: 266 Resp: 52961

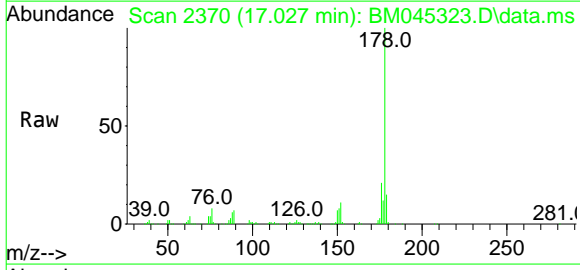
Ion	Ratio	Lower	Upper
266	100		
264	62.1	49.3	73.9
268	66.2	53.3	79.9





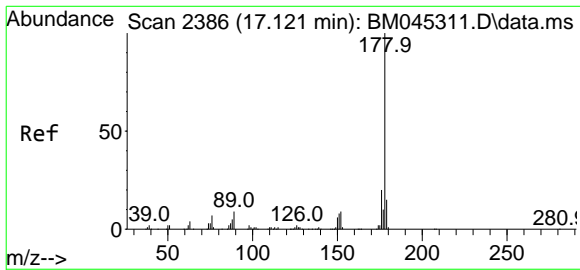
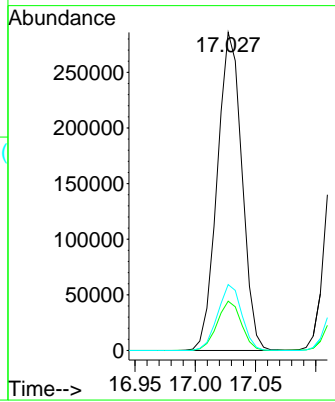
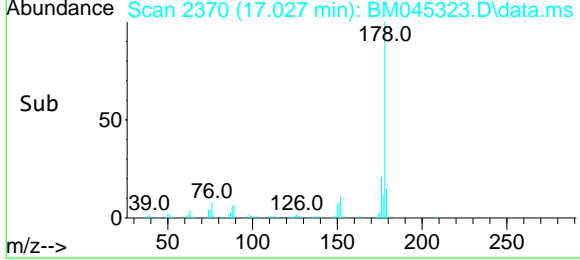
#72  
 Phenanthrene  
 Concen: 33.067 ng/u1  
 RT: 17.027 min Scan# 2371  
 Delta R.T. -0.006 min  
 Lab File: BM045323.D  
 Acq: 17 Apr 2024 18:54

Instrument : BNA\_M  
 ClientSampleId : E0MG3MSD

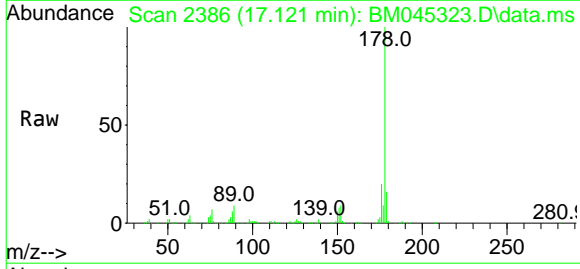


Tgt Ion:178 Resp: 407122  
 Ion Ratio Lower Upper  
 178 100  
 179 15.5 11.9 17.9  
 176 20.7 15.4 23.2

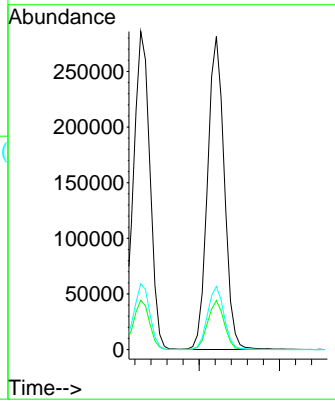
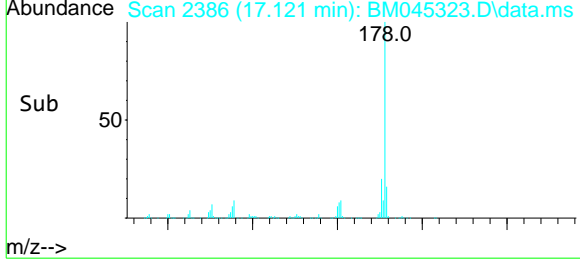
Manual Integrations  
**APPROVED**  
 Reviewed By :Yogesh Patel 04/18/2024  
 Supervised By :mohammad ahmed 04/25/2024

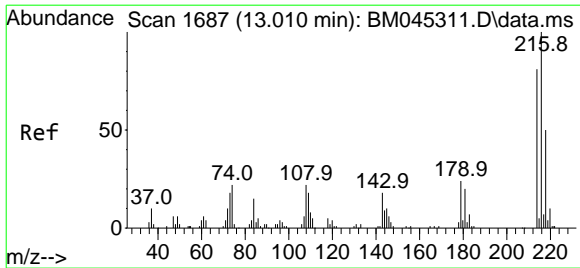


#74  
 Anthracene  
 Concen: 32.326 ng/u1  
 RT: 17.121 min Scan# 2386  
 Delta R.T. 0.000 min  
 Lab File: BM045323.D  
 Acq: 17 Apr 2024 18:54



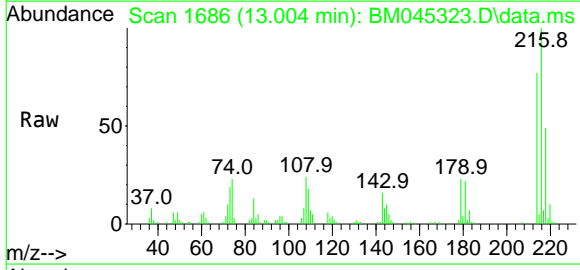
Tgt Ion:178 Resp: 407129  
 Ion Ratio Lower Upper  
 178 100  
 179 15.7 12.3 18.5  
 176 20.2 15.8 23.6





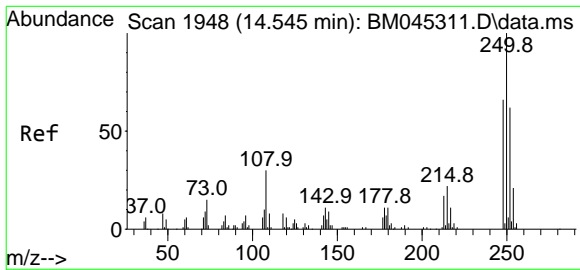
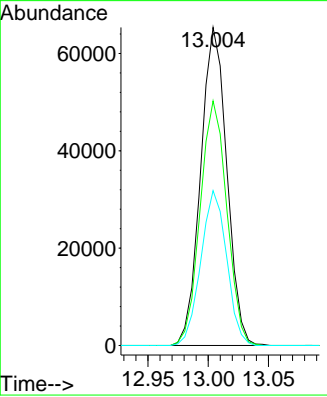
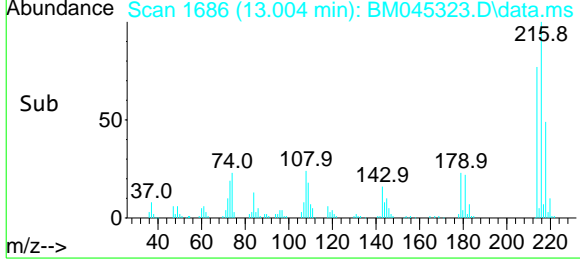
#75  
 1,2,3,4-Tetrachlorobenzene  
 Concen: 34.298 ng/uL  
 RT: 13.004 min Scan# 16  
 Delta R.T. -0.006 min  
 Lab File: BM045323.D  
 Acq: 17 Apr 2024 18:54

Instrument : BNA\_M  
 Client Sample Id : E0MG3MSD

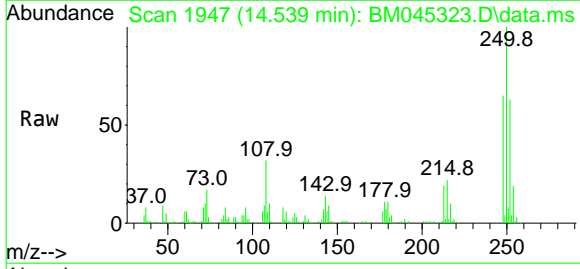


Tgt Ion: 216 Resp: 98904  
 Ion Ratio Lower Upper  
 216 100  
 214 76.9 64.1 96.1  
 218 48.7 38.6 58.0

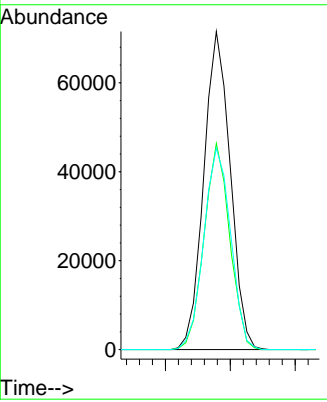
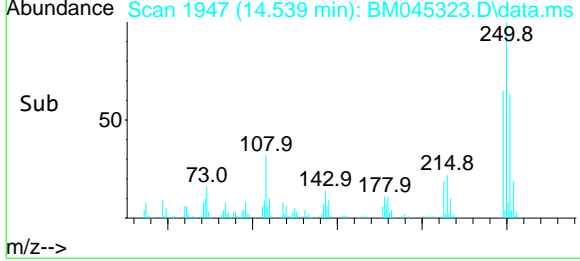
Manual Integrations  
**APPROVED**  
 Reviewed By : Yogesh Patel 04/18/2024  
 Supervised By : mohammad ahmed 04/25/2024

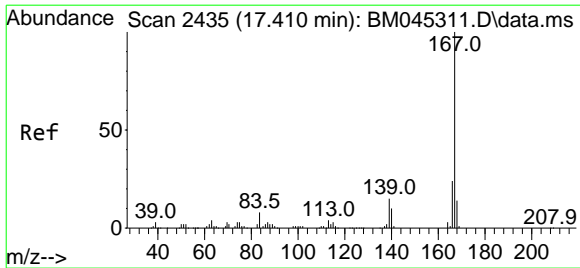


#76  
 Pentachlorobenzene  
 Concen: 33.065 ng/uL  
 RT: 14.539 min Scan# 1947  
 Delta R.T. -0.006 min  
 Lab File: BM045323.D  
 Acq: 17 Apr 2024 18:54



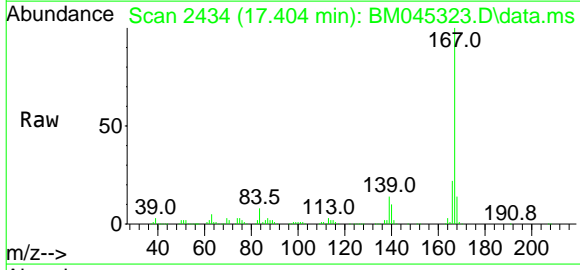
Tgt Ion: 250 Resp: 101449  
 Ion Ratio Lower Upper  
 250 100  
 248 64.8 49.8 74.6  
 252 63.3 49.4 74.2





#77  
**Carbazole**  
 Concen: 32.154 ng/ul  
 RT: 17.404 min Scan# 2434  
 Delta R.T. -0.006 min  
 Lab File: BM045323.D  
 Acq: 17 Apr 2024 18:54

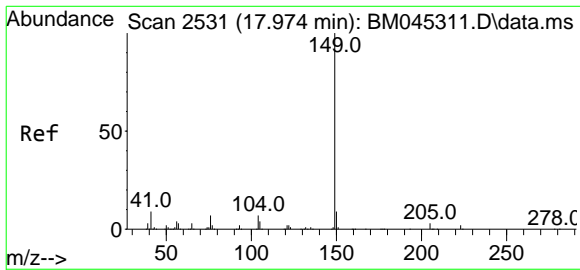
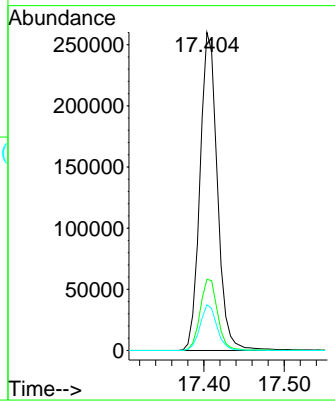
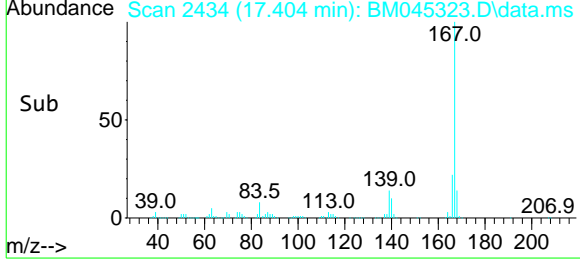
**Instrument :**  
 BNA\_M  
**ClientSampleId :**  
 E0MG3MSD



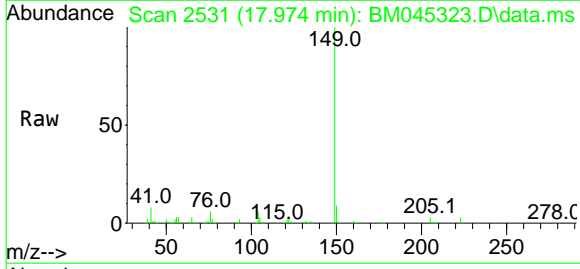
Tgt Ion:167 Resp: 390485

Ion	Ratio	Lower	Upper
167	100		
166	22.4	17.3	25.9
139	14.4	10.7	16.1

**Manual Integrations**  
**APPROVED**  
 Reviewed By :Yogesh Patel 04/18/2024  
 Supervised By :mohammad ahmed 04/25/2024

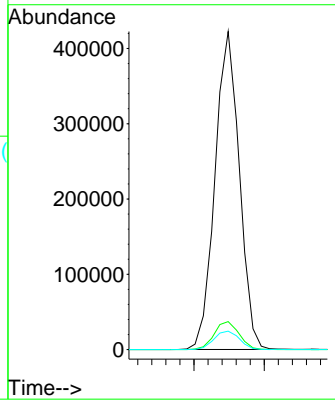
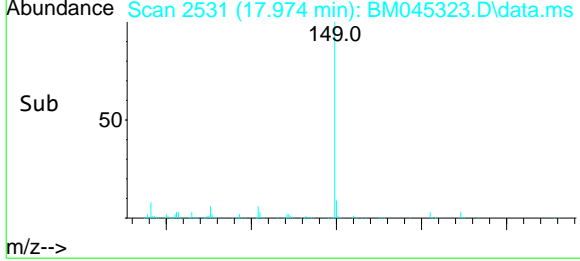


#78  
**Di-n-butylphthalate**  
 Concen: 37.091 ng/ul  
 RT: 17.974 min Scan# 2531  
 Delta R.T. 0.000 min  
 Lab File: BM045323.D  
 Acq: 17 Apr 2024 18:54

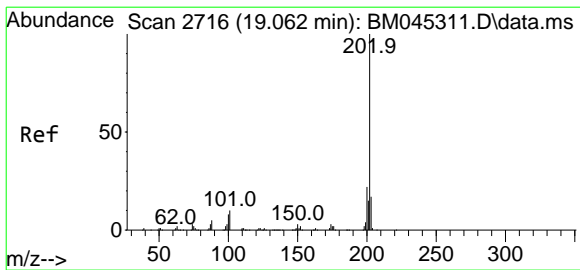


Tgt Ion:149 Resp: 507979

Ion	Ratio	Lower	Upper
149	100		
150	8.8	7.2	10.8
104	5.8	4.3	6.5

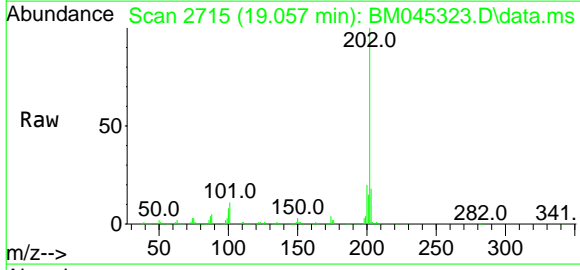






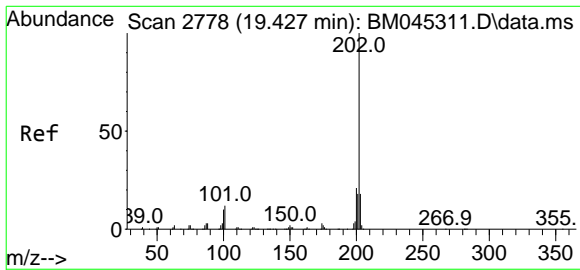
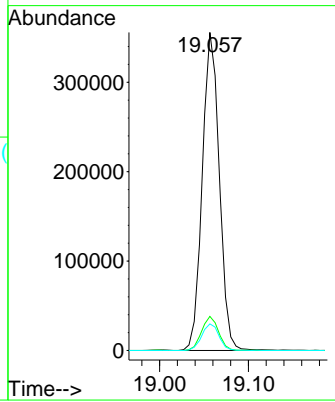
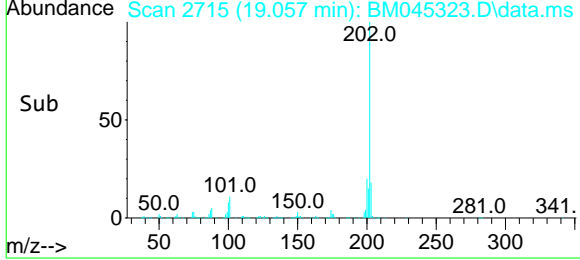
#80  
 Fluoranthene  
 Concen: 36.598 ng/u1  
 RT: 19.057 min Scan# 2715  
 Delta R.T. -0.006 min  
 Lab File: BM045323.D  
 Acq: 17 Apr 2024 18:54

Instrument : BNA\_M  
 ClientSampleId : E0MG3MSD

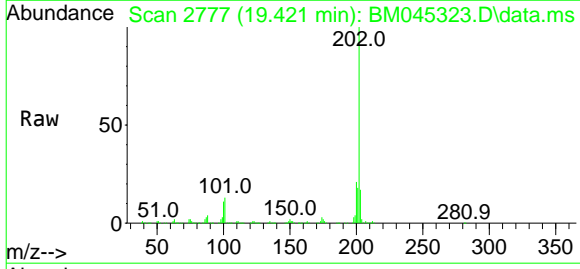


Tgt Ion:202 Resp: 474446  
 Ion Ratio Lower Upper  
 202 100  
 101 10.7 8.7 13.1  
 100 8.4 6.3 9.5

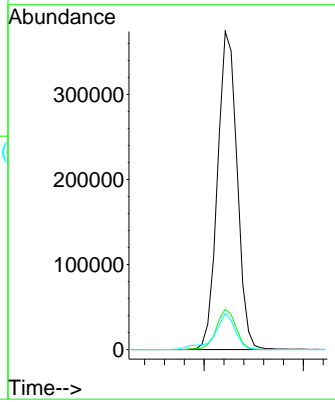
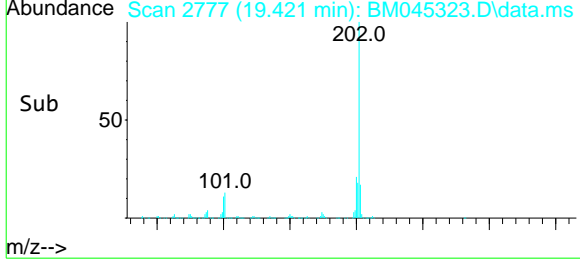
Manual Integrations  
**APPROVED**  
 Reviewed By :Yogesh Patel 04/18/2024  
 Supervised By :mohammad ahmed 04/25/2024

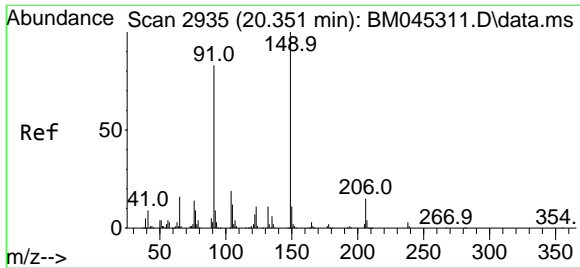


#82  
 Pyrene  
 Concen: 36.664 ng/u1  
 RT: 19.421 min Scan# 2777  
 Delta R.T. -0.006 min  
 Lab File: BM045323.D  
 Acq: 17 Apr 2024 18:54



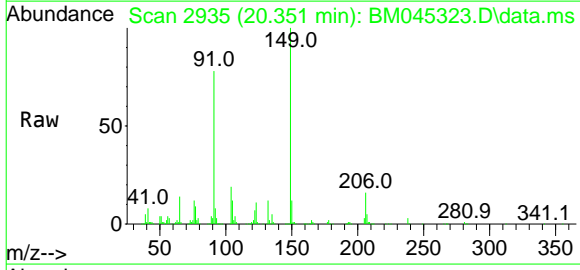
Tgt Ion:202 Resp: 512909  
 Ion Ratio Lower Upper  
 202 100  
 101 12.7 10.2 15.4  
 100 11.4 8.5 12.7





#83  
 Butylbenzylphthalate  
 Concen: 39.720 ng/ul  
 RT: 20.351 min Scan# 2935  
 Delta R.T. 0.000 min  
 Lab File: BM045323.D  
 Acq: 17 Apr 2024 18:54

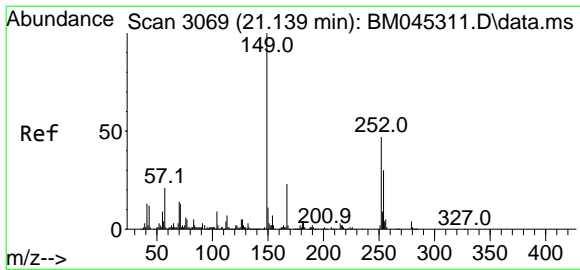
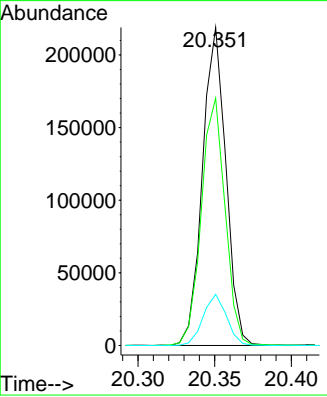
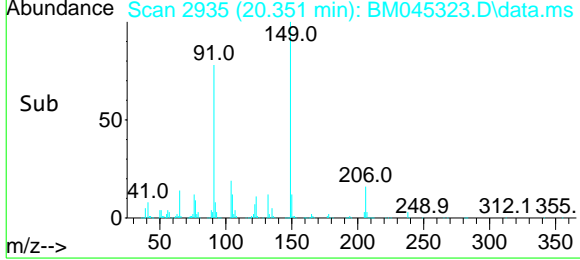
Instrument : BNA\_M  
 ClientSampleId : E0MG3MSD



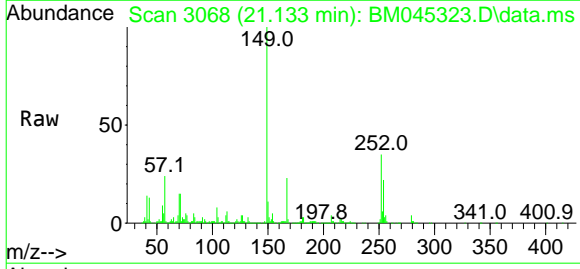
Tgt Ion: 149 Resp: 232802

Ion	Ratio	Lower	Upper
149	100		
91	77.8	56.2	84.4
206	16.1	14.3	21.5

Manual Integrations  
**APPROVED**  
 Reviewed By :Yogesh Patel 04/18/2024  
 Supervised By :mohammad ahmed 04/25/2024

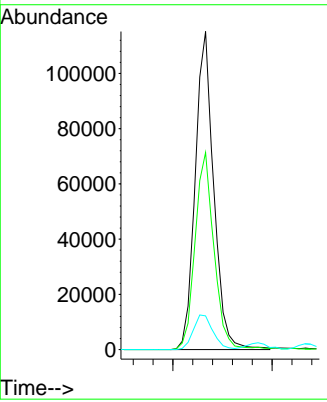
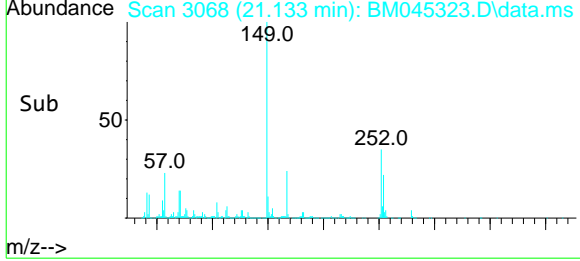


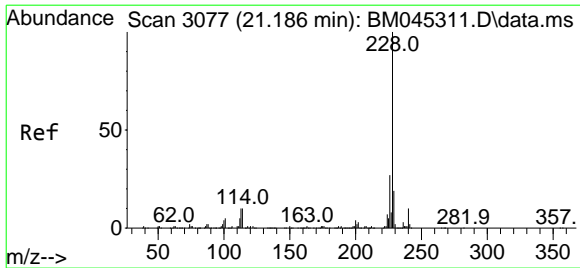
#84  
 3,3'-Dichlorobenzidine  
 Concen: 30.095 ng/ul  
 RT: 21.133 min Scan# 3068  
 Delta R.T. -0.006 min  
 Lab File: BM045323.D  
 Acq: 17 Apr 2024 18:54



Tgt Ion: 252 Resp: 149366

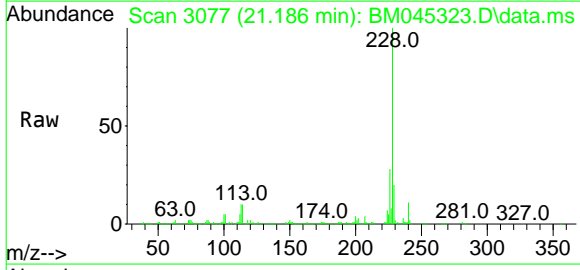
Ion	Ratio	Lower	Upper
252	100		
254	62.0	53.9	80.9
126	10.6	9.0	13.4





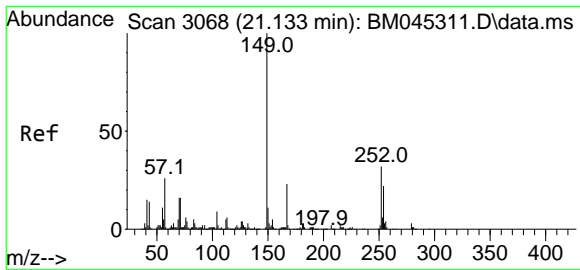
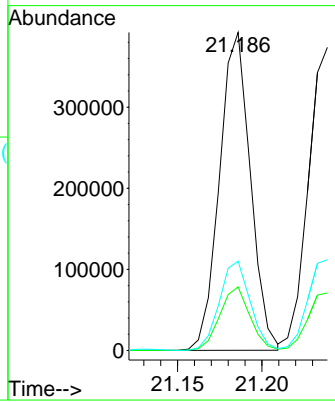
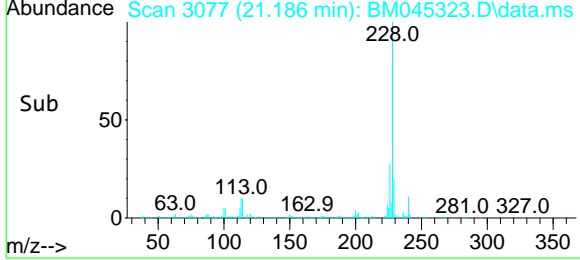
#85  
 Benzo(a)anthracene  
 Concen: 32.931 ng/ul  
 RT: 21.186 min Scan# 3077  
 Delta R.T. 0.000 min  
 Lab File: BM045323.D  
 Acq: 17 Apr 2024 18:54

Instrument : BNA\_M  
 ClientSampleId : E0MG3MSD

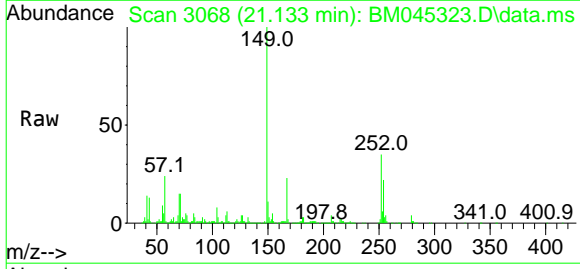


Tgt Ion:228 Resp: 498762  
 Ion Ratio Lower Upper  
 228 100  
 229 20.0 15.5 23.3  
 226 28.1 21.8 32.6

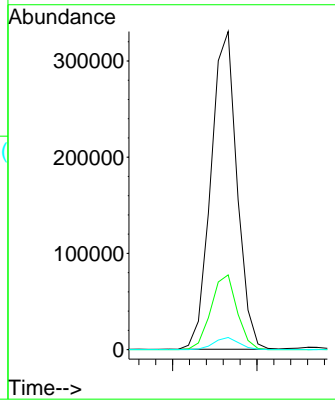
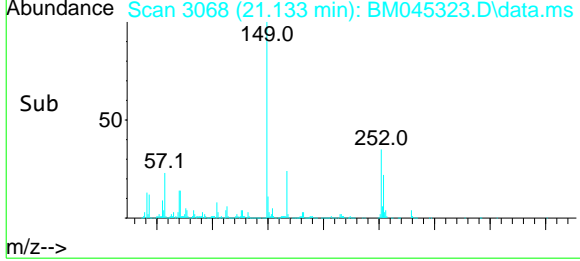
Manual Integrations  
**APPROVED**  
 Reviewed By :Yogesh Patel 04/18/2024  
 Supervised By :mohammad ahmed 04/25/2024

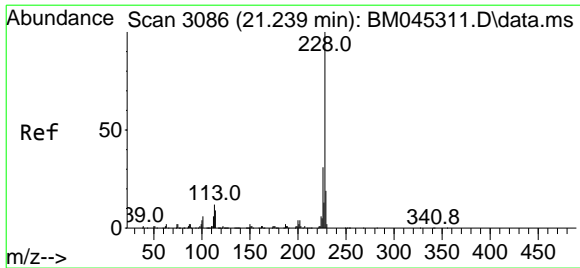


#86  
 Bis(2-ethylhexyl)phthalate  
 Concen: 38.809 ng/ul  
 RT: 21.133 min Scan# 3068  
 Delta R.T. 0.000 min  
 Lab File: BM045323.D  
 Acq: 17 Apr 2024 18:54



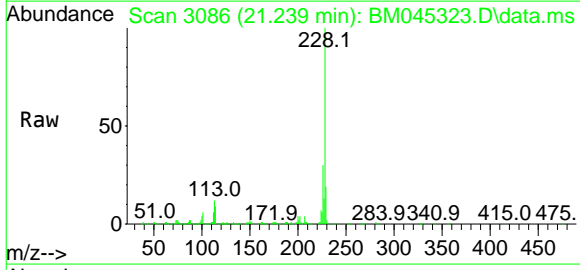
Tgt Ion:149 Resp: 355558  
 Ion Ratio Lower Upper  
 149 100  
 167 23.5 19.7 29.5  
 279 3.8 3.3 4.9





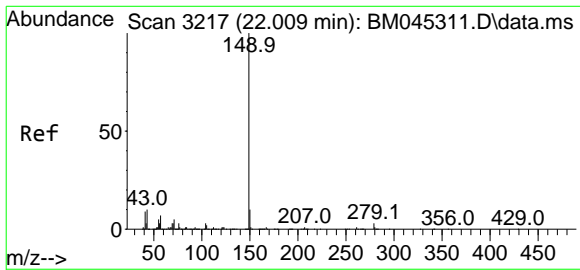
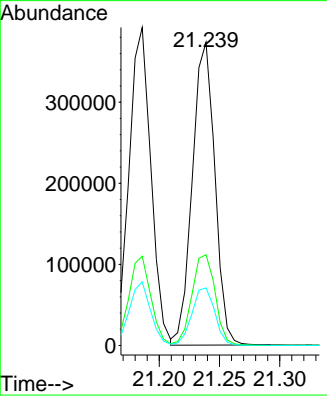
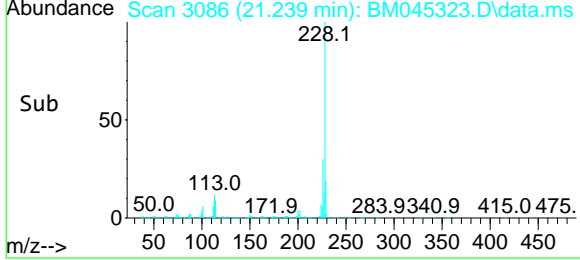
#87  
**Chrysene**  
 Concen: 34.371 ng/u1  
 RT: 21.239 min Scan# 3086  
 Delta R.T. 0.000 min  
 Lab File: BM045323.D  
 Acq: 17 Apr 2024 18:54

**Instrument :**  
 BNA\_M  
**ClientSampleId :**  
 E0MG3MSD

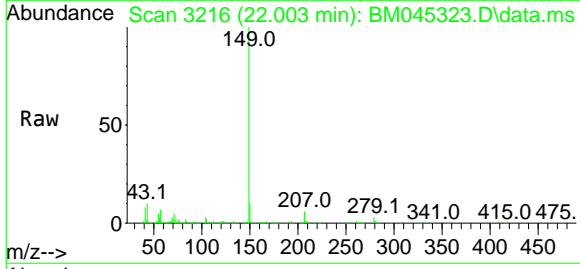


Tgt Ion: 228 Resp: 485286  
 Ion Ratio Lower Upper  
 228 100  
 226 29.9 24.3 36.5  
 229 19.0 15.7 23.5

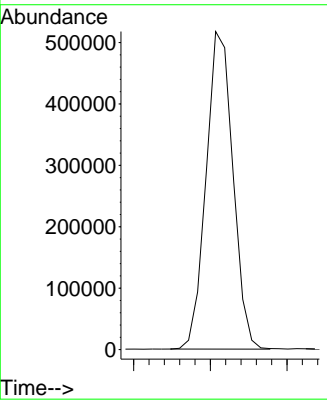
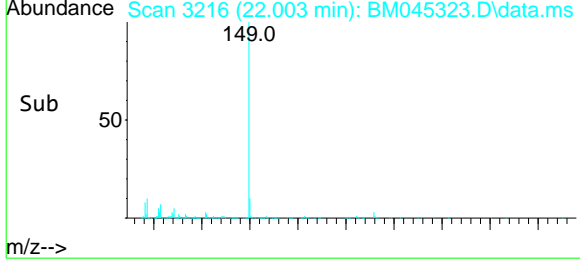
**Manual Integrations**  
**APPROVED**  
 Reviewed By :Yogesh Patel 04/18/2024  
 Supervised By :mohammad ahmed 04/25/2024

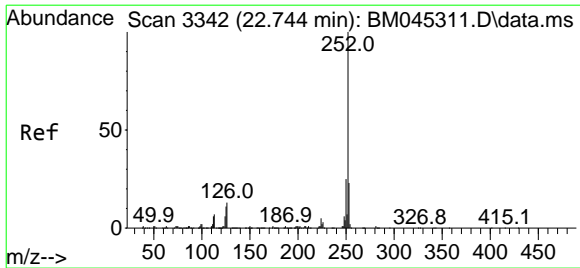


#89  
**Di-n-octyl phthalate**  
 Concen: 33.600 ng/u1  
 RT: 22.003 min Scan# 3216  
 Delta R.T. -0.006 min  
 Lab File: BM045323.D  
 Acq: 17 Apr 2024 18:54



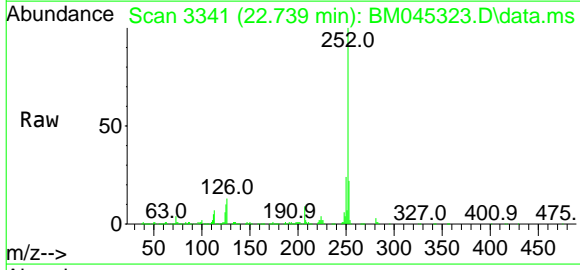
Tgt Ion: 149 Resp: 629282





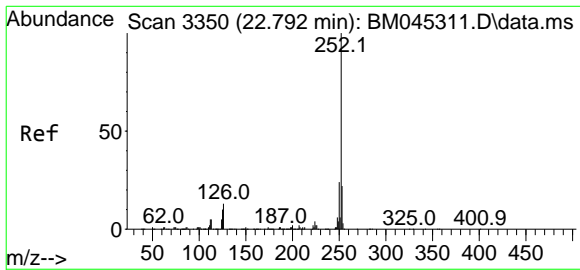
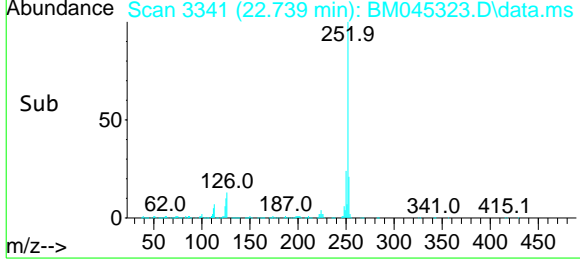
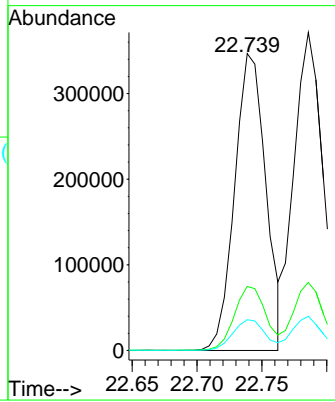
#90  
 Benzo(b)fluoranthene  
 Concen: 33.442 ng/u1  
 RT: 22.739 min Scan# 3342  
 Delta R.T. -0.006 min  
 Lab File: BM045323.D  
 Acq: 17 Apr 2024 18:54

Instrument : BNA\_M  
 ClientSampleId : E0MG3MSD

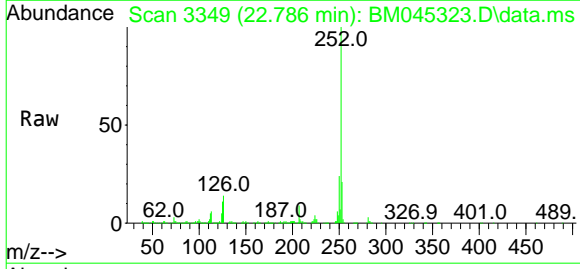


Tgt Ion:252 Resp: 580177  
 Ion Ratio Lower Upper  
 252 100  
 253 21.6 18.0 27.0  
 125 10.4 8.2 12.4

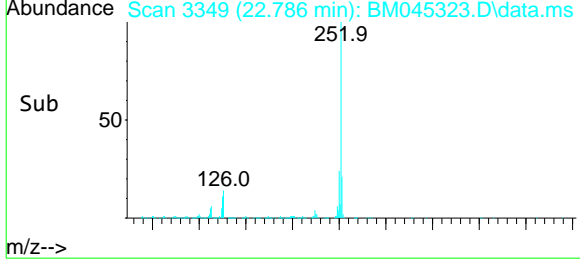
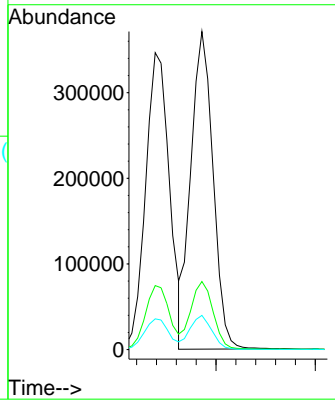
Manual Integrations  
**APPROVED**  
 Reviewed By :Yogesh Patel 04/18/2024  
 Supervised By :mohammad ahmed 04/25/2024

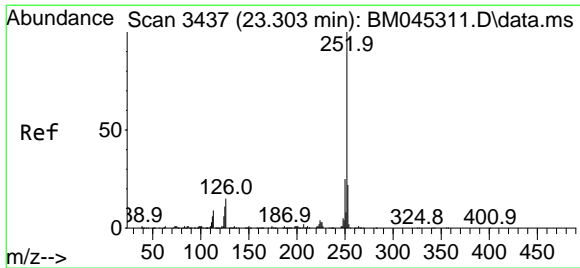


#91  
 Benzo(k)fluoranthene  
 Concen: 33.042 ng/u1  
 RT: 22.786 min Scan# 3349  
 Delta R.T. -0.006 min  
 Lab File: BM045323.D  
 Acq: 17 Apr 2024 18:54



Tgt Ion:252 Resp: 576981  
 Ion Ratio Lower Upper  
 252 100  
 253 21.4 17.5 26.3  
 125 10.8 8.5 12.7





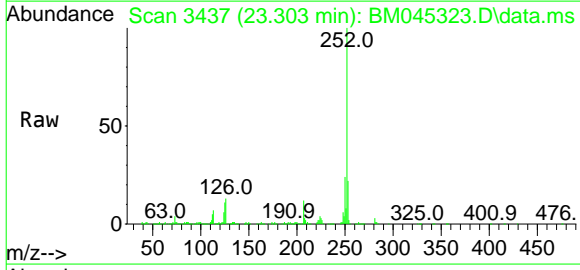
#93  
 Benzo(a)pyrene  
 Concen: 30.229 ng/u1  
 RT: 23.303 min Scan# 3437  
 Delta R.T. 0.000 min  
 Lab File: BM045323.D  
 Acq: 17 Apr 2024 18:54

Instrument :

BNA\_M

ClientSampleId :

E0MG3MSD



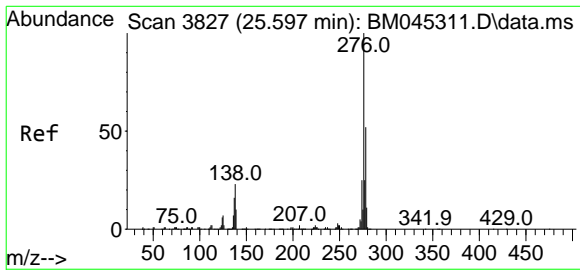
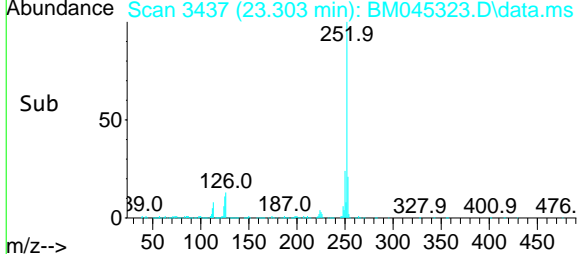
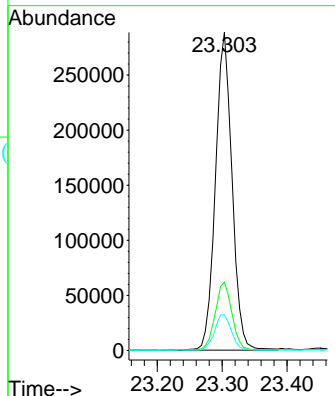
Tgt Ion:252 Resp: 510409

Ion	Ratio	Lower	Upper
252	100		
253	21.5	17.6	26.4
125	11.2	8.8	13.2

Manual Integrations

APPROVED

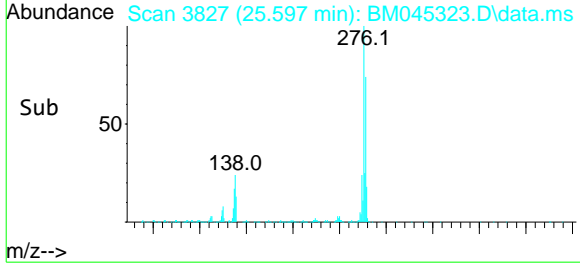
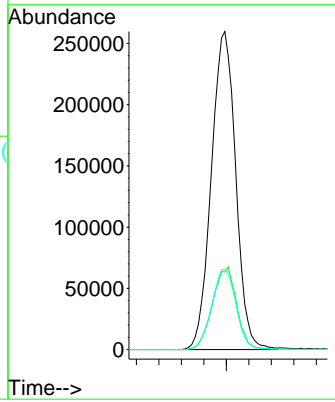
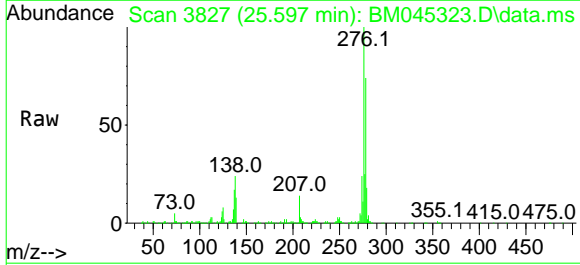
Reviewed By :Yogesh Patel 04/18/2024  
 Supervised By :mohammad ahmed 04/25/2024

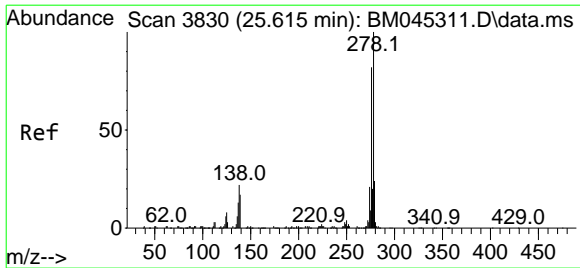


#94  
 Indeno(1,2,3-cd)pyrene  
 Concen: 35.788 ng/u1  
 RT: 25.597 min Scan# 3827  
 Delta R.T. 0.000 min  
 Lab File: BM045323.D  
 Acq: 17 Apr 2024 18:54

Tgt Ion:276 Resp: 782743

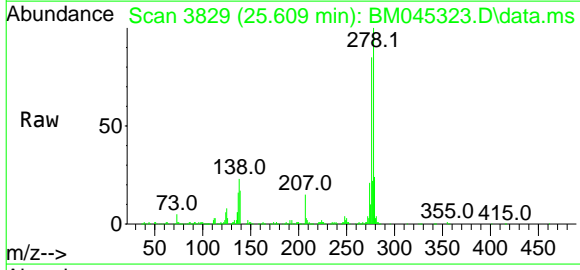
Ion	Ratio	Lower	Upper
276	100		
138	24.4	19.0	28.6
277	25.2	19.9	29.9





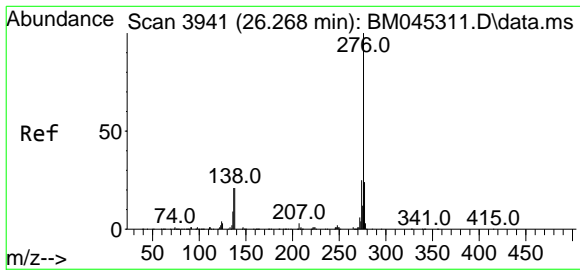
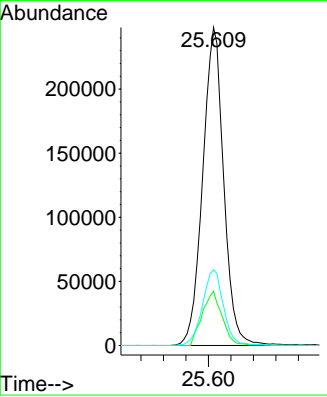
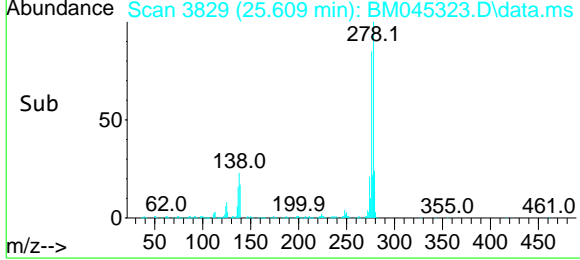
#95  
 Dibenzo(a,h)anthracene  
 Concen: 35.076 ng/ul  
 RT: 25.609 min Scan# 38  
 Delta R.T. -0.006 min  
 Lab File: BM045323.D  
 Acq: 17 Apr 2024 18:54

Instrument : BNA\_M  
 ClientSampleId : E0MG3MSD

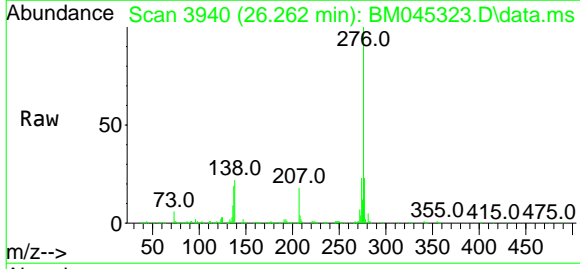


Tgt Ion:278 Resp: 641414  
 Ion Ratio Lower Upper  
 278 100  
 139 17.0 11.9 17.9  
 279 23.8 19.4 29.2

Manual Integrations  
**APPROVED**  
 Reviewed By :Yogesh Patel 04/18/2024  
 Supervised By :mohammad ahmed 04/25/2024



#96  
 Benzo(g,h,i)perylene  
 Concen: 36.092 ng/ul  
 RT: 26.262 min Scan# 3940  
 Delta R.T. -0.006 min  
 Lab File: BM045323.D  
 Acq: 17 Apr 2024 18:54



Tgt Ion:276 Resp: 622756  
 Ion Ratio Lower Upper  
 276 100  
 138 21.8 17.8 26.6  
 277 23.2 18.7 28.1

