

Data Path : Z:\HPCHEM1\BNA M\DATA\BM041817\  
 Data File : BM009662.D  
 Acq On : 18 Apr 2017 19:25  
 Operator : SJ/MA  
 Sample : SSTDCCC020EC  
 Misc :  
 ALS Vial : 2 Sample Multiplier: 1

Quant Time: Apr 19 05:35:05 2017  
 Quant Method : Z:\HPCHEM1\BNA M\METHODS\SOM02.2-EPA-BM041717.M  
 Quant Title : SVOA CALIBRATION  
 QLast Update : Wed Apr 19 05:34:35 2017  
 Response via : Initial Calibration

Internal Standards	R.T.	QIon	Response	Conc	Units	Dev(Min)
1) 1,4-Dichlorobenzene-d4	7.83	152	120681	20.00	ng/ul	0.00
18) Naphthalene-d8	10.63	136	472956	20.00	ng/ul	0.00
35) Acenaphthene-d10	14.47	164	274949	20.00	ng/ul	0.00
61) Phenanthrene-d10	17.23	188	616398	20.00	ng/ul	0.00
75) Chrysene-d12	21.41	240	790634	20.00	ng/ul	0.00
83) Perylene-d12	23.73	264	758471	20.00	ng/ul	0.00

## System Monitoring Compounds

3) 1,4-Dioxane-d8	3.32	96	22316	6.81	ng/uL	0.00
5) Phenol-d5	6.99	99	205673	18.70	ng/ul	0.00
7) Bis-(2-Chloroethyl)ether-d	7.17	67	151563	19.59	ng/ul	0.00
9) 2-Chlorophenol-d4	7.36	132	149798	19.60	ng/ul	0.00
13) 4-Methylphenol-d8	8.53	113	152280	18.74	ng/ul	0.00
19) Nitrobenzene-d5	9.00	128	71541	19.62	ng/ul	0.00
22) 2-Nitrophenol-d4	9.72	143	75410	19.61	ng/ul	0.00
26) 2,4-Dichlorophenol-d3	10.25	165	145158	19.03	ng/ul	0.00
29) 4-Chloroaniline-d4	10.77	131	175088	22.78	ng/ul	0.00
43) Dimethylphthalate-d6	13.89	166	416790	18.80	ng/ul	0.00
46) Acenaphthylene-d8	14.17	160	543445	19.36	ng/ul	0.00
51) 4-Nitrophenol-d4	14.67	143	71455	17.95	ng/ul	0.00
57) Fluorene-d10	15.47	176	363596	19.08	ng/ul	0.00
62) 4,6-Dinitro-2-methylphenol	15.60	200	66654	16.97	ng/ul	0.00
70) Anthracene-d10	17.33	188	571953	19.16	ng/ul	0.00
76) Pyrene-d10	19.62	212	634583	18.64	ng/ul	0.00
87) Benzo(a)pyrene-d12	23.58	264	661117	19.27	ng/ul	0.00

## Target Compounds

Target Compounds	R.T.	QIon	Response	Conc	Units	Ovalue
4) Benzaldehyde	6.98	77	161329	23.73	ng/ul	88
6) Phenol	7.02	94	219725	18.50	ng/ul#	68
8) Bis(2-Chloroethyl)ether	7.26	93	175600	19.29	ng/ul	84
10) 2-Chlorophenol	7.39	128	156246	19.56	ng/ul#	80
11) 2-Methylphenol	8.27	108	158816	19.11	ng/ul	96
12) 2,2'-oxybis(1-Chloropropan	8.36	45	288069	19.37	ng/ul	95
14) Acetophenone	8.66	105	261844	18.83	ng/ul#	78
15) N-Nitroso-di-n-propylamine	8.64	70	164738	20.06	ng/ul#	80
16) 4-Methylphenol	8.60	108	172468	19.00	ng/ul	97
17) Hexachloroethane	8.90	117	74870	19.37	ng/ul	95
20) Nitrobenzene	9.04	77	234699	19.52	ng/ul#	86
21) Isophorone	9.56	82	385883	19.63	ng/ul#	96
23) 2-Nitrophenol	9.75	139	81744	18.99	ng/ul#	60
24) 2,4-Dimethylphenol	9.80	107	201553	19.89	ng/ul#	82
25) Bis(2-Chloroethoxy)methane	10.04	93	223551	18.91	ng/ul	99
27) 2,4-Dichlorophenol	10.27	162	149545	19.52	ng/ul#	89
28) Naphthalene	10.68	128	481321	19.50	ng/ul	98
30) 4-Chloroaniline	10.80	127	181590	22.66	ng/ul	97
31) Hexachlorobutadiene	10.95	225	115894	20.27	ng/ul	99
32) Caprolactam	11.57	113	45450	18.17	ng/ul#	74
33) 4-Chloro-3-methylphenol	11.91	107	170475	19.78	ng/ul	99
34) 2-Methylnaphthalene	12.29	142	344895	19.76	ng/ul	92
36) 1,2,4,5-Tetrachlorobenzene	12.66	216	200953	19.87	ng/ul#	94

Data Path : Z:\HPCHEM1\BNA M\DATA\BM041817\  
 Data File : BM009662.D  
 Acq On : 18 Apr 2017 19:25  
 Operator : SJ/MA  
 Sample : SSTDCCC020EC  
 Misc :  
 ALS Vial : 2 Sample Multiplier: 1

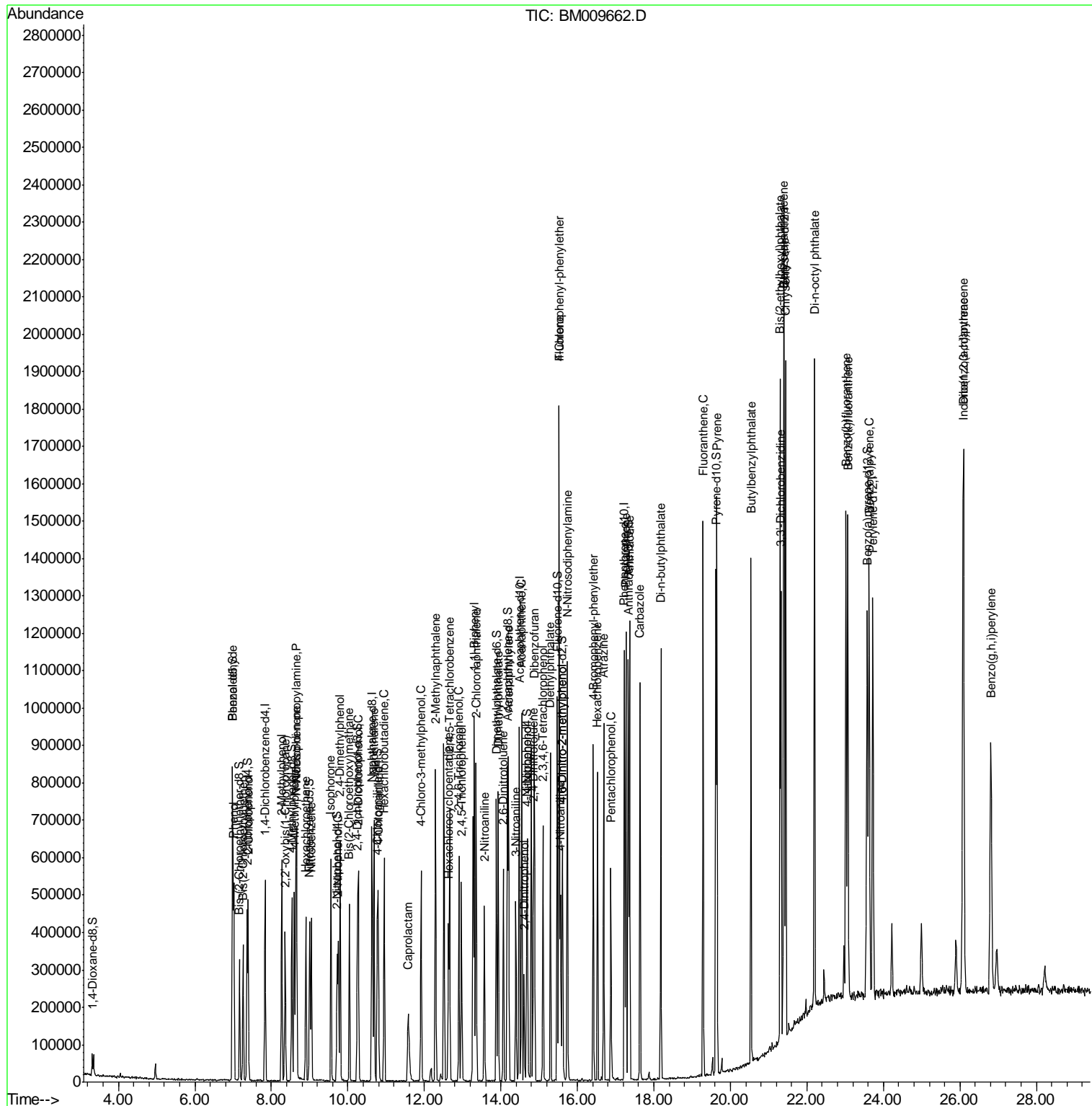
Quant Time: Apr 19 05:35:05 2017  
 Quant Method : Z:\HPCHEM1\BNA M\METHODS\SOM02.2-EPA-BM041717.M  
 Quant Title : SVOA CALIBRATION  
 QLast Update : Wed Apr 19 05:34:35 2017  
 Response via : Initial Calibration

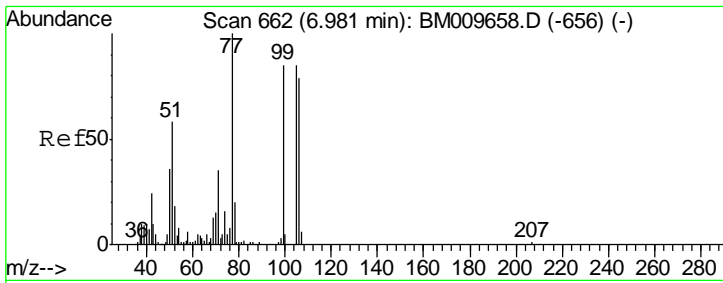
Internal Standards	R.T.	QIon	Response	Conc	Units	Dev(Min)
37) Hexachlorocyclopentadiene	12.63	237	100097	18.18	ng/ul	92
38) 2,4,6-Trichlorophenol	12.90	196	118318	18.29	ng/ul	92
39) 2,4,5-Trichlorophenol	12.97	196	122583	18.75	ng/ul	86
40) 1,1'-Biphenyl	13.30	154	438709	19.03	ng/ul	94
41) 2-Chloronaphthalene	13.35	162	351305	19.30	ng/ul	95
42) 2-Nitroaniline	13.56	65	130701	18.77	ng/ul#	79
44) Dimethylphthalate	13.93	163	422626	18.95	ng/ul	97
45) 2,6-Dinitrotoluene	14.06	165	82071	18.43	ng/ul#	79
47) Acenaphthylene	14.20	152	539953	19.17	ng/ul	99
48) 3-Nitroaniline	14.40	138	85906	19.53	ng/ul#	75
49) Acenaphthene	14.54	153	368262	19.43	ng/ul	99
50) 2,4-Dinitrophenol	14.60	184	46035	16.68	ng/ul#	75
52) 4-Nitrophenol	14.69	109	84856	18.26	ng/ul#	61
53) Dibenzofuran	14.88	168	528995	19.40	ng/ul	89
54) 2,4-Dinitrotoluene	14.85	165	125002	18.96	ng/ul#	69
55) 2,3,4,6-Tetrachlorophenol	15.10	232	115479	19.22	ng/ul#	94
56) Diethylphthalate	15.30	149	433084	19.00	ng/ul	97
58) Fluorene	15.53	166	429314	18.98	ng/ul	98
59) 4-Chlorophenyl-phenylether	15.52	204	225408	19.17	ng/ul	96
60) 4-Nitroaniline	15.56	138	88340	18.34	ng/ul#	38
63) 4,6-Dinitro-2-methylphenol	15.62	198	74543	18.03	ng/ul#	85
64) N-Nitrosodiphenylamine	15.74	169	366064	19.43	ng/ul	98
65) 4-Bromophenyl-phenylether	16.42	248	138390	19.52	ng/ul	90
66) Hexachlorobenzene	16.53	284	148391	19.08	ng/ul	99
67) Atrazine	16.69	200	138095	18.88	ng/ul	96
68) Pentachlorophenol	16.87	266	83409	17.40	ng/ul	89
69) Phenanthrene	17.27	178	667292	19.29	ng/ul	98
71) Anthracene	17.36	178	699429	19.43	ng/ul	97
72) Carbazole	17.63	167	592767	18.74	ng/ul	97
73) Di-n-butylphthalate	18.18	149	730271	19.08	ng/ul	96
74) Fluoranthene	19.29	202	790083	18.41	ng/ul#	91
77) Pyrene	19.65	202	854606	19.03	ng/ul#	90
78) Butylbenzylphthalate	20.54	149	340214	18.35	ng/ul	89
79) 3,3'-Dichlorobenzidine	21.33	252	307785	19.16	ng/ul	99
80) Benzo(a)anthracene	21.39	228	886338	19.15	ng/ul	99
81) Bis(2-ethylhexyl)phthalate	21.30	149	503444	18.36	ng/ul	99
82) Chrysene	21.44	228	805786	19.32	ng/ul	98
84) Di-n-octyl phthalate	22.20	149	901265	17.86	ng/ul#	91
85) Benzo(b)fluoranthene	23.02	252	893012	19.13	ng/ul#	98
86) Benzo(k)fluoranthene	23.07	252	870389	19.58	ng/ul#	96
88) Benzo(a)pyrene	23.63	252	862981	19.19	ng/ul#	96
89) Indeno(1,2,3-cd)pyrene	26.08	276	1019129	19.39	ng/ul#	87
90) Dibenzo(a,h)anthracene	26.09	278	860011	19.35	ng/ul#	95
91) Benzo(g,h,i)perylene	26.81	276	832823	19.39	ng/ul#	93

(#) = qualifier out of range (m) = manual integration (+) = signals summed

Data Path : Z:\HPCHEM1\BNA M\DATA\BM041817\  
 Data File : BM009662.D  
 Acq On : 18 Apr 2017 19:25  
 Operator : SJ/MA  
 Sample : SSTDCCC020EC  
 Misc :  
 ALS Vial : 2 Sample Multiplier: 1

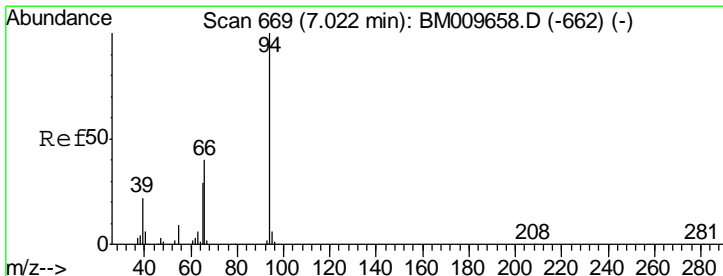
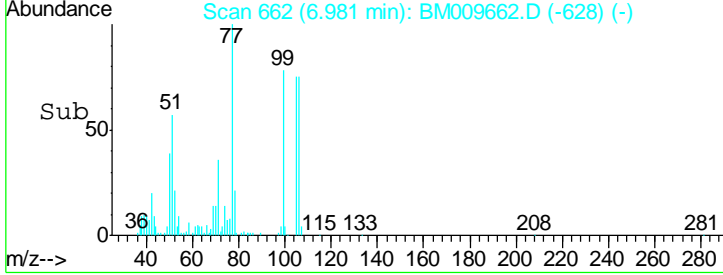
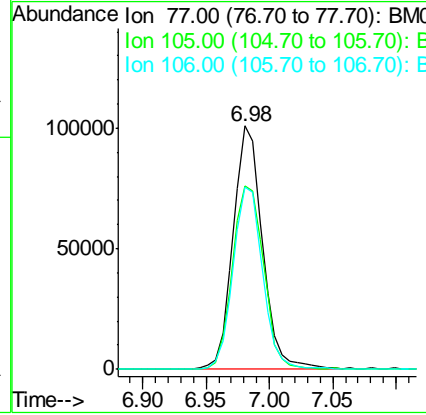
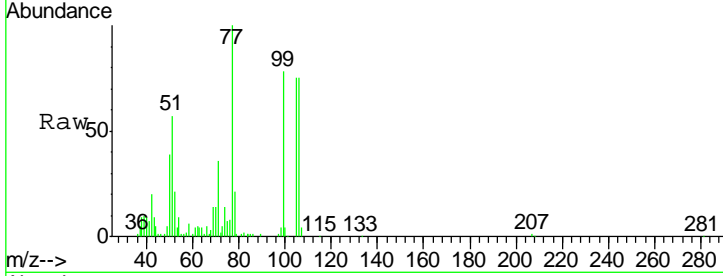
Quant Time: Apr 19 05:35:05 2017  
 Quant Method : Z:\HPCHEM1\BNA M\METHODS\SOM02.2-EPA-BM041717.M  
 Quant Title : SVOA CALIBRATION  
 QLast Update : Wed Apr 19 05:34:35 2017  
 Response via : Initial Calibration





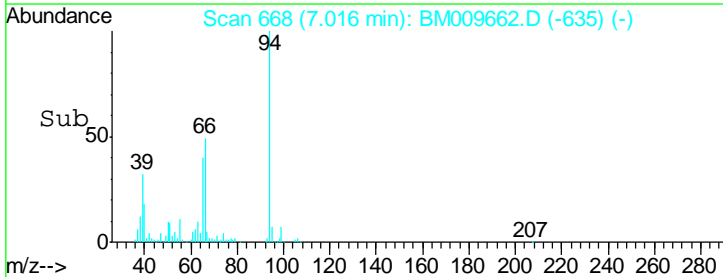
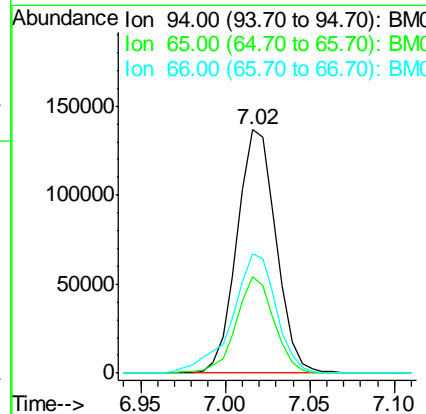
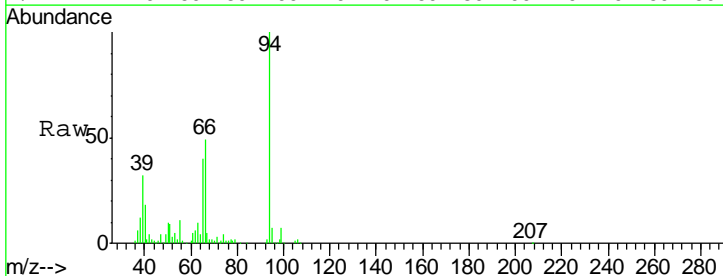
#4  
Benzaldehyde  
Concen: 23.73 ng/ul  
RT: 6.98 min Scan# 662  
Delta R.T. -0.00 min  
Lab File: BM009662.D  
Acq: 18 Apr 2017 19:25

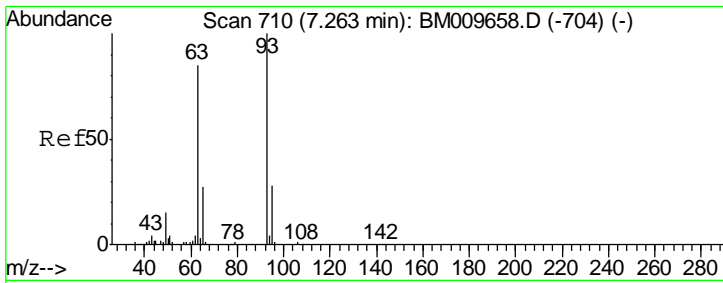
Tgt Ion	Resp	Lower	Upper
77	100		
105	75.4	54.8	82.2
106	75.0	50.2	75.4



#6  
Phenol  
Concen: 18.50 ng/ul  
RT: 7.02 min Scan# 668  
Delta R.T. -0.01 min  
Lab File: BM009662.D  
Acq: 18 Apr 2017 19:25

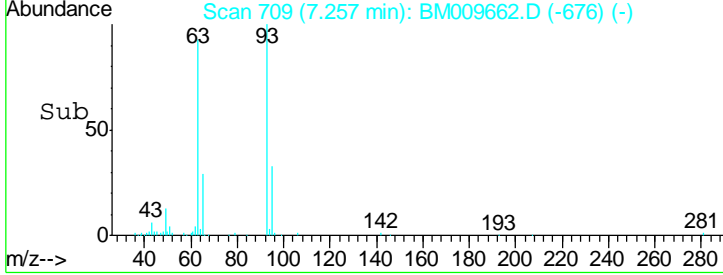
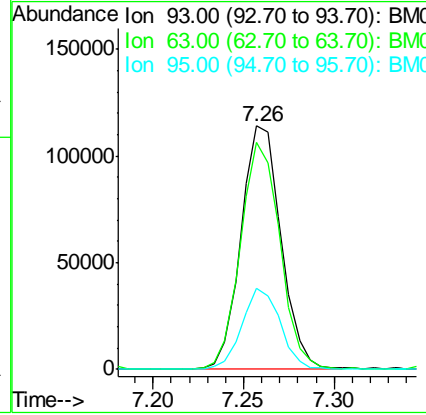
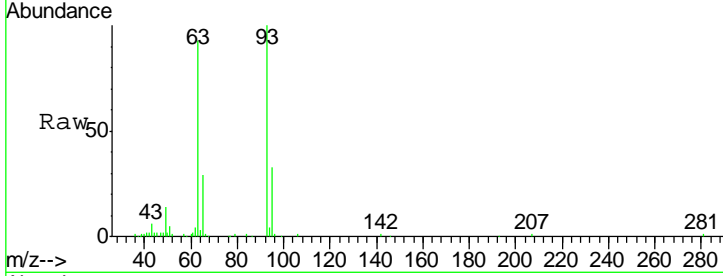
Tgt Ion	Resp	Lower	Upper
94	100		
65	39.5	39.8	59.6#
66	49.1	69.9	104.9#





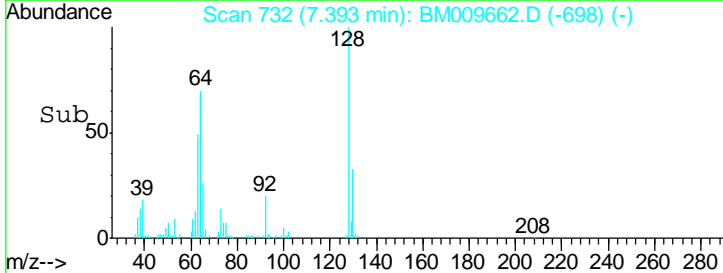
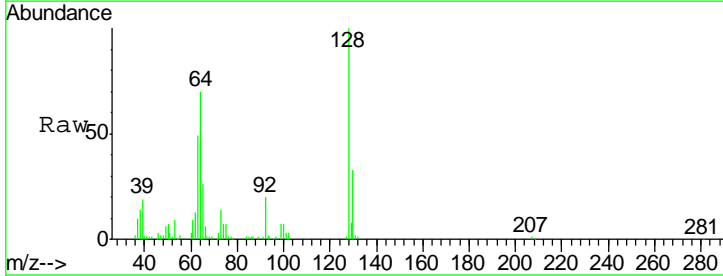
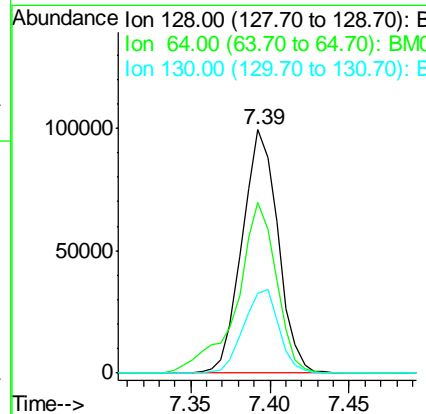
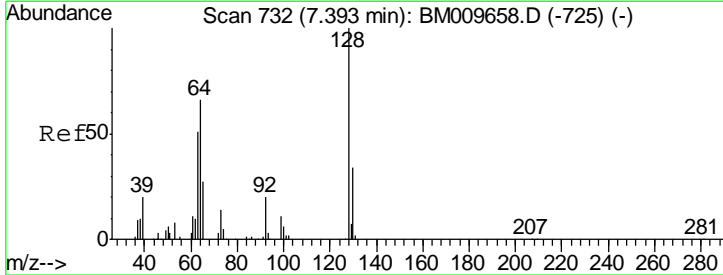
#8  
 Bis(2-Chloroethyl)ether  
 Concen: 19.29 ng/ul  
 RT: 7.26 min Scan# 709  
 Delta R.T. -0.01 min  
 Lab File: BM009662.D  
 Acq: 18 Apr 2017 19:25

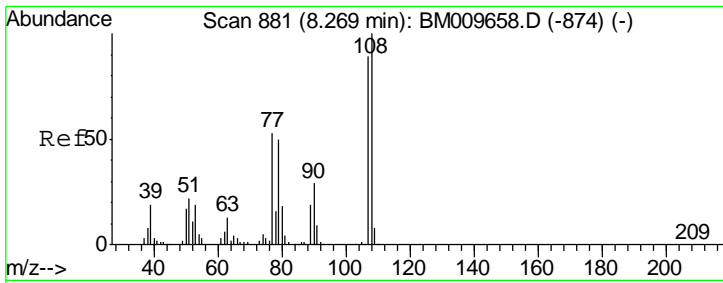
Tgt Ion	Resp	Lower	Upper
93	175600		
93	100		
63	93.1	92.0	138.0
95	33.1	26.7	40.1



#10  
 2-Chlorophenol  
 Concen: 19.56 ng/ul  
 RT: 7.39 min Scan# 732  
 Delta R.T. -0.00 min  
 Lab File: BM009662.D  
 Acq: 18 Apr 2017 19:25

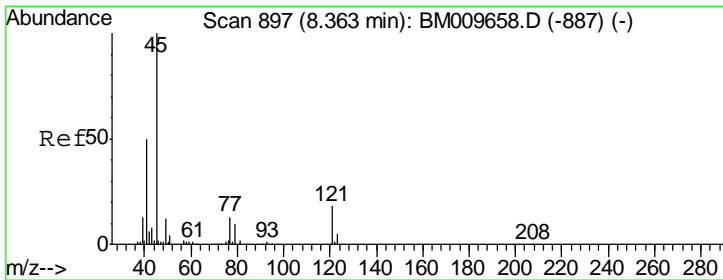
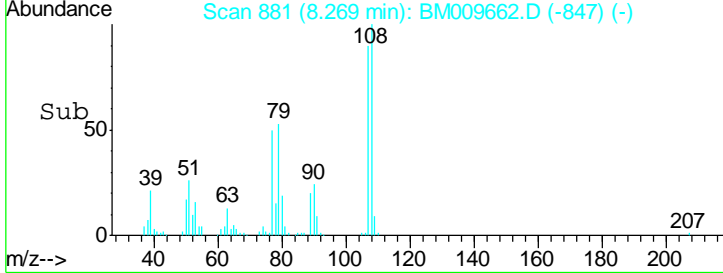
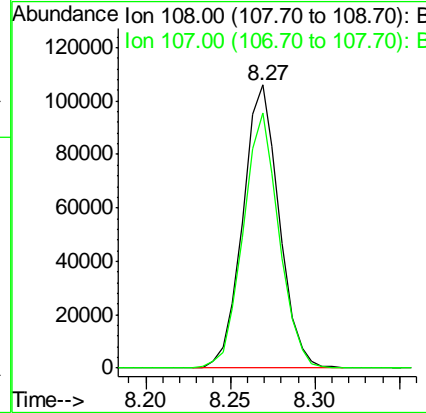
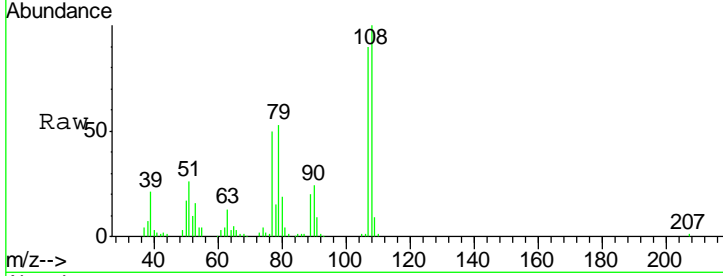
Tgt Ion	Resp	Lower	Upper
128	156246		
128	100		
64	70.1	76.6	115.0#
130	32.5	26.5	39.7





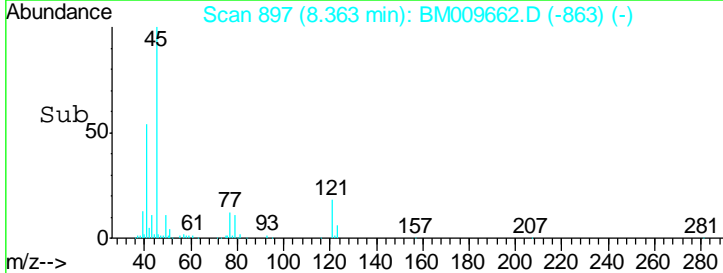
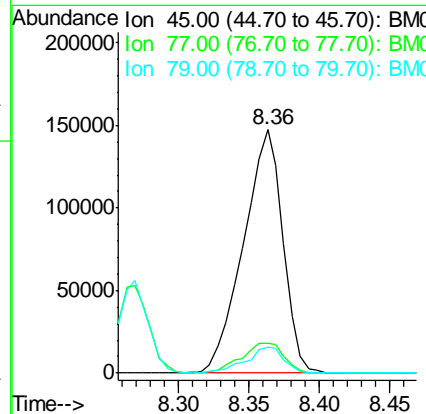
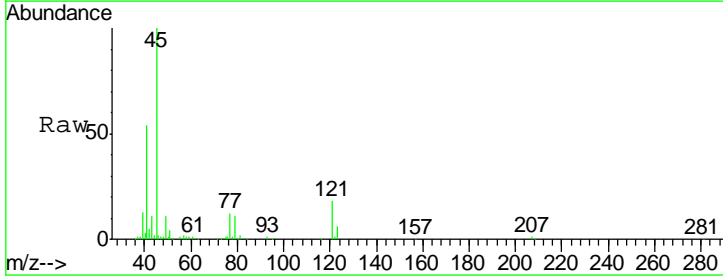
#11  
 2-Methylphenol  
 Concen: 19.11 ng/ul  
 RT: 8.27 min Scan# 881  
 Delta R.T. -0.00 min  
 Lab File: BM009662.D  
 Acq: 18 Apr 2017 19:25

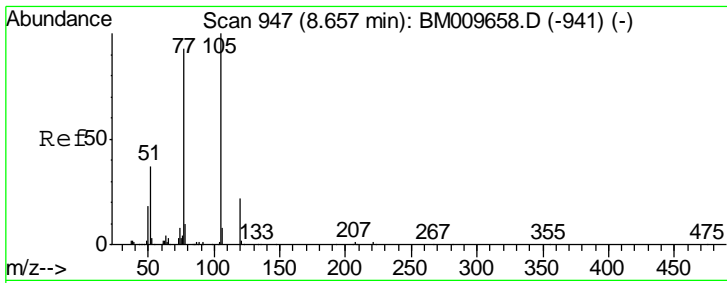
Tgt Ion	Resp	Lower	Upper
108	158816		
107	90.0	75.1	112.7



#12  
 2,2'-oxybis(1-Chloropropane)  
 Concen: 19.37 ng/ul  
 RT: 8.36 min Scan# 897  
 Delta R.T. -0.00 min  
 Lab File: BM009662.D  
 Acq: 18 Apr 2017 19:25

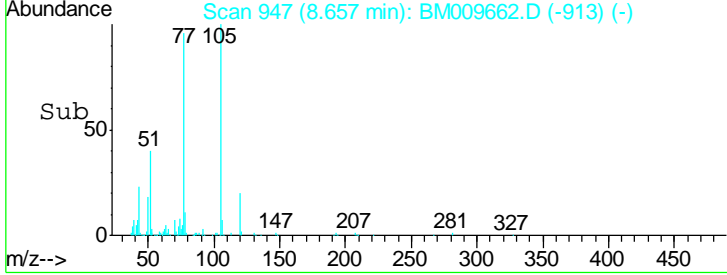
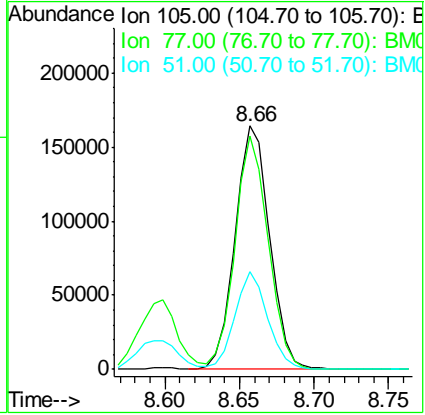
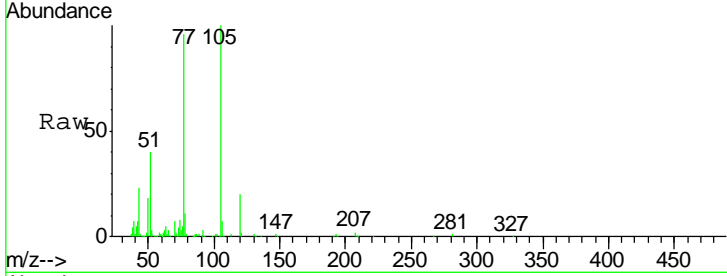
Tgt Ion	Resp	Lower	Upper
45	288069		
77	12.5	11.9	17.9
79	10.6	9.7	14.5





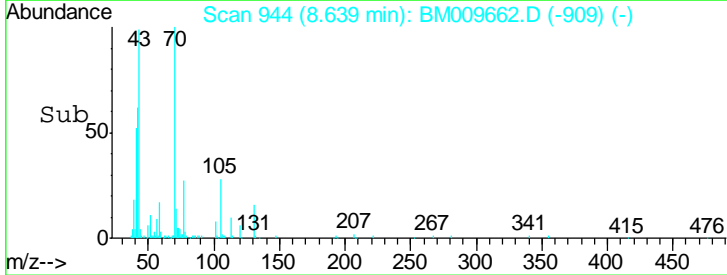
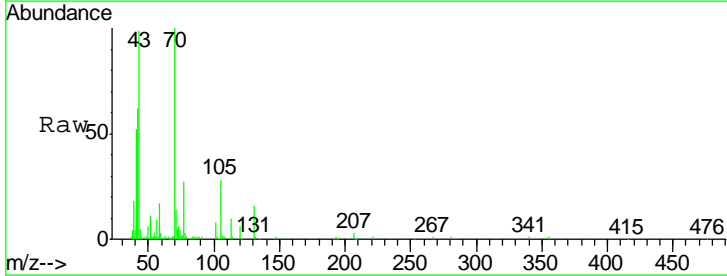
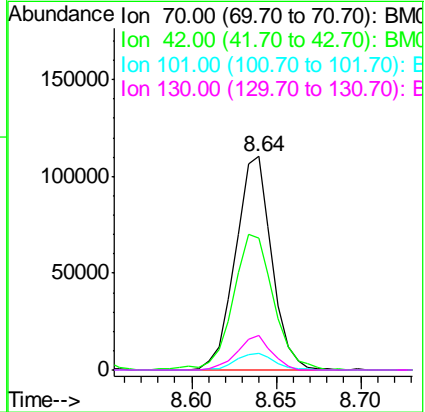
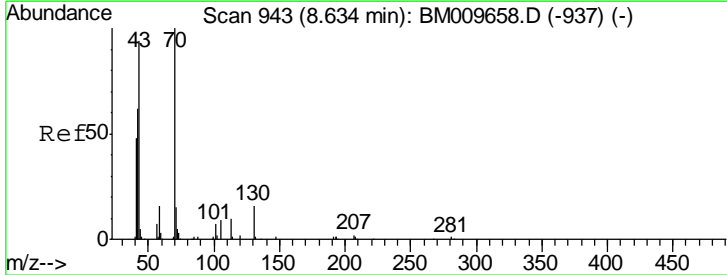
#14  
 Acetophenone  
 Concen: 18.83 ng/ul  
 RT: 8.66 min Scan# 947  
 Delta R.T. -0.00 min  
 Lab File: BM009662.D  
 Acq: 18 Apr 2017 19:25

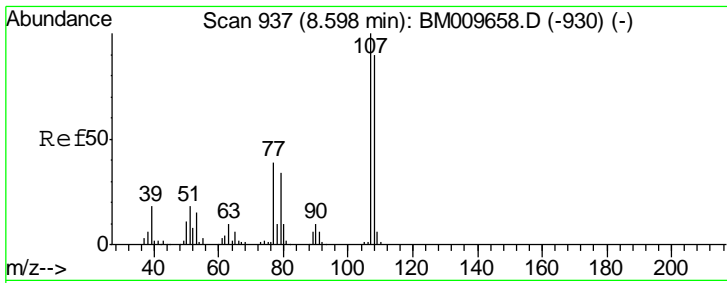
Tgt Ion	Resp	Lower	Upper
105	261844		
77	96.0	91.7	137.5
51	40.4	50.8	76.2#



#15  
 N-Nitroso-di-n-propylamine  
 Concen: 20.06 ng/ul  
 RT: 8.64 min Scan# 944  
 Delta R.T. 0.01 min  
 Lab File: BM009662.D  
 Acq: 18 Apr 2017 19:25

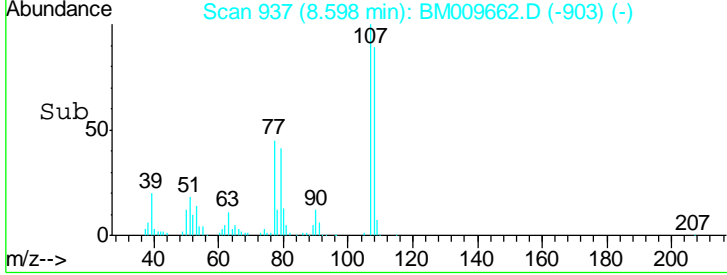
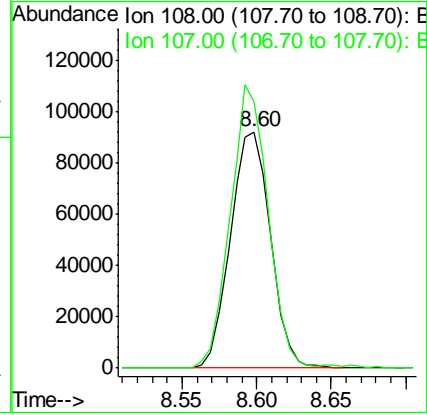
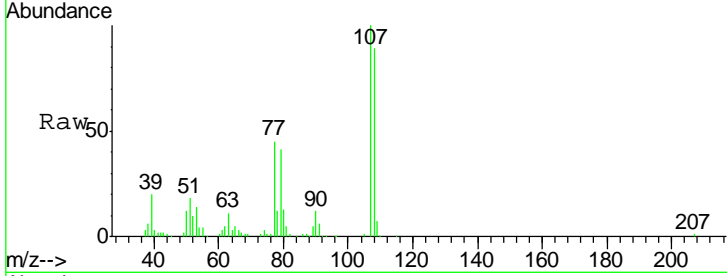
Tgt Ion	Resp	Lower	Upper
70	164738		
42	61.5	64.2	96.2#
101	8.1	5.1	7.7#
130	16.4	8.3	12.5#





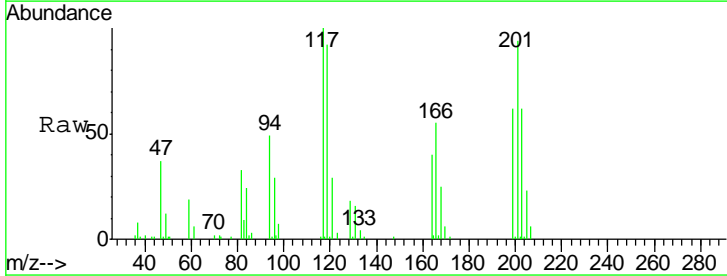
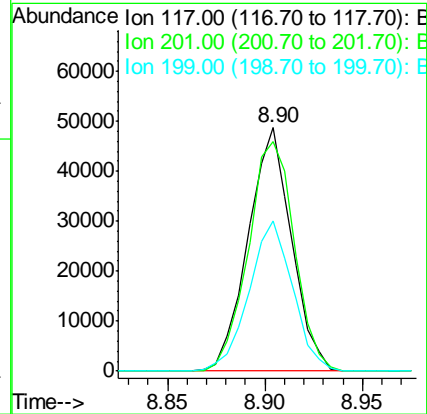
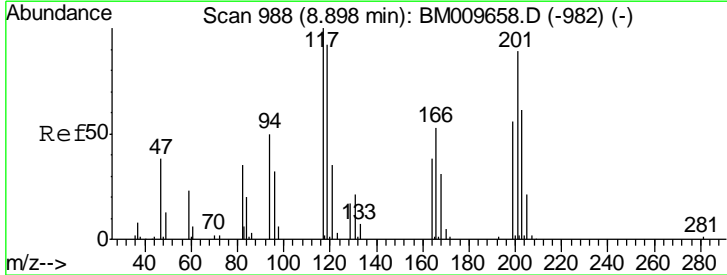
#16  
 4-Methylphenol  
 Concen: 19.00 ng/ul  
 RT: 8.60 min Scan# 937  
 Delta R.T. -0.00 min  
 Lab File: BM009662.D  
 Acq: 18 Apr 2017 19:25

Tgt Ion	Resp	Lower	Upper
108	172468		
108	100		
107	112.9	93.1	139.7

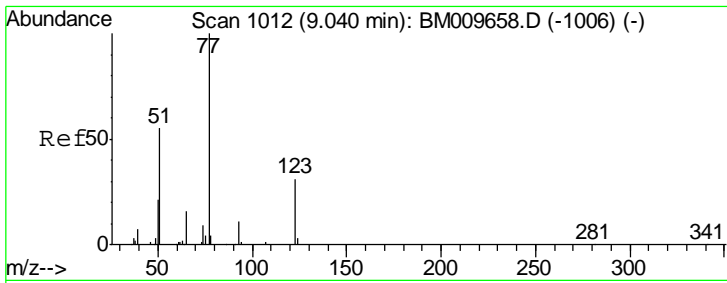


#17  
 Hexachloroethane  
 Concen: 19.37 ng/ul  
 RT: 8.90 min Scan# 989  
 Delta R.T. 0.01 min  
 Lab File: BM009662.D  
 Acq: 18 Apr 2017 19:25

Tgt Ion	Resp	Lower	Upper
117	74870		
117	100		
201	94.3	71.0	106.6
199	61.8	47.8	71.8

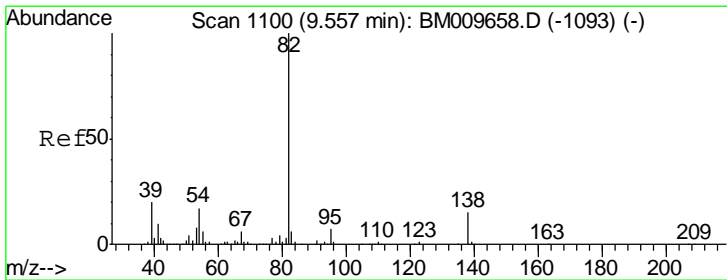
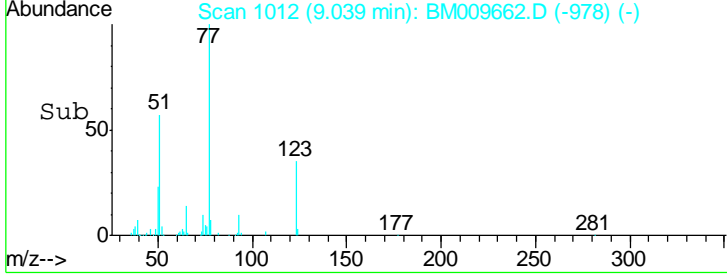
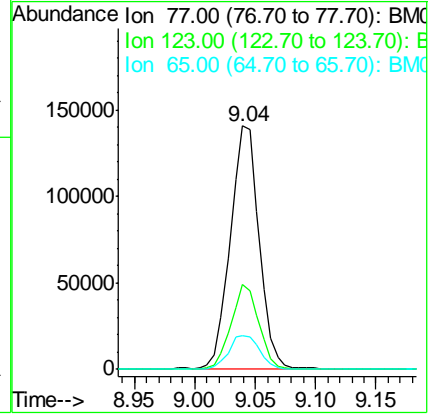
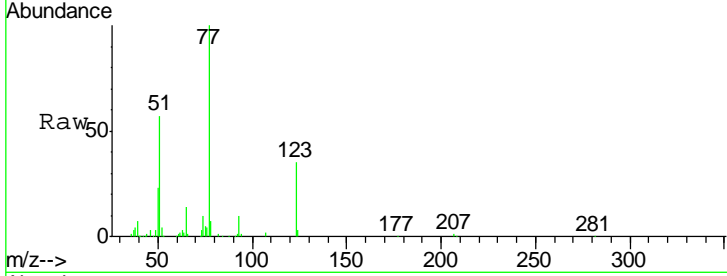






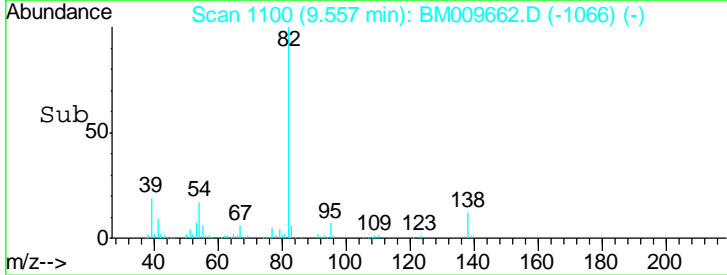
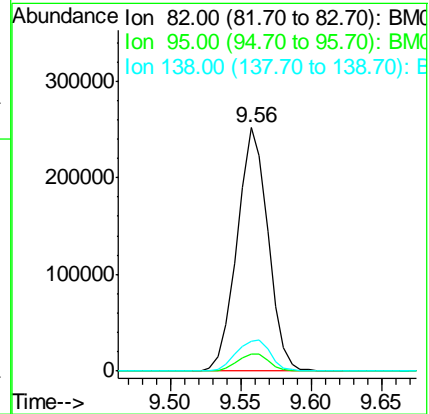
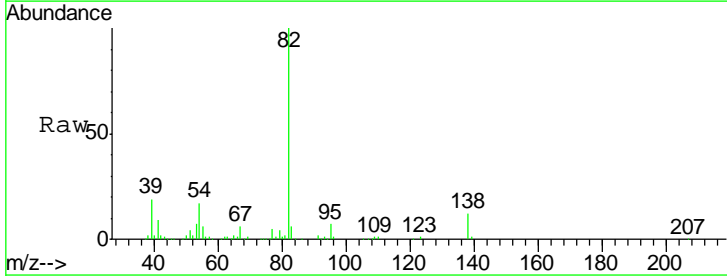
#20  
 Nitrobenzene  
 Concen: 19.52 ng/ul  
 RT: 9.04 min Scan# 1012  
 Delta R.T. -0.00 min  
 Lab File: BM009662.D  
 Acq: 18 Apr 2017 19:25

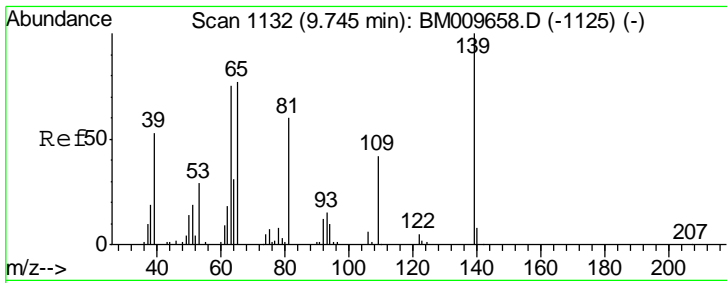
Tgt Ion	Resp	Lower	Upper
77	100		
123	35.0	20.8	31.2#
65	14.0	14.7	22.1#



#21  
 Isophorone  
 Concen: 19.63 ng/ul  
 RT: 9.56 min Scan# 1100  
 Delta R.T. -0.00 min  
 Lab File: BM009662.D  
 Acq: 18 Apr 2017 19:25

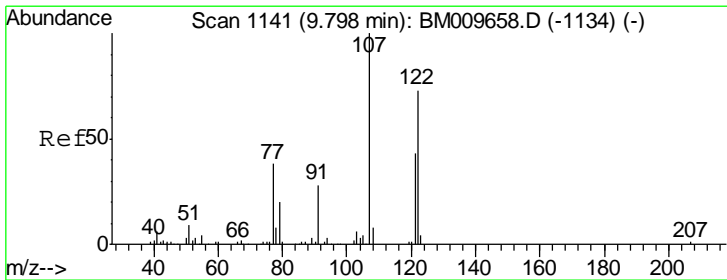
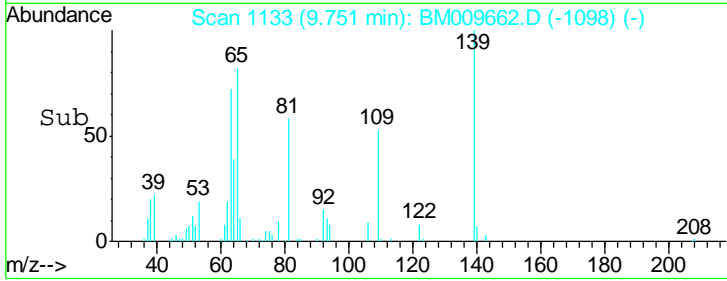
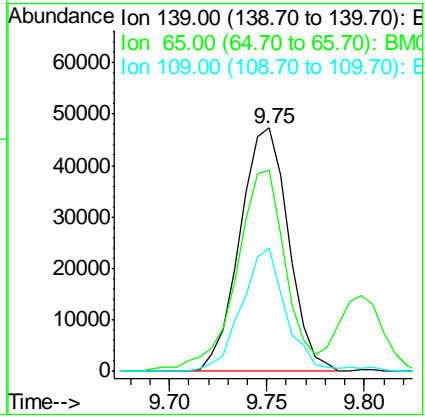
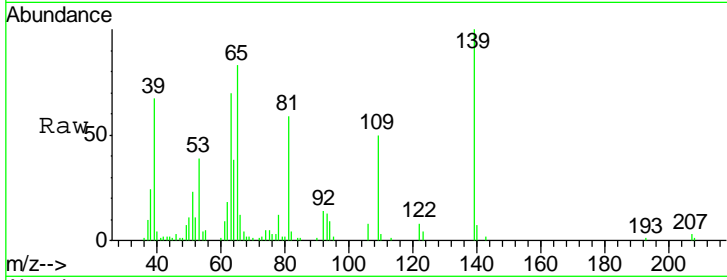
Tgt Ion	Resp	Lower	Upper
82	100		
95	7.0	7.7	11.5#
138	12.1	9.4	14.0





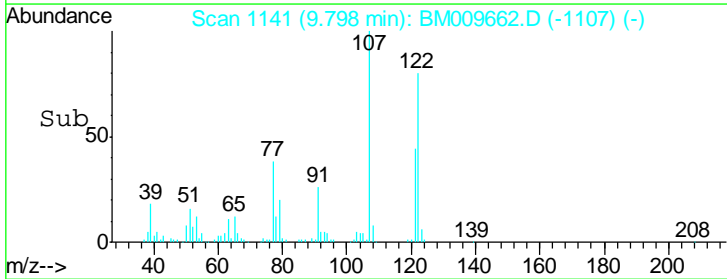
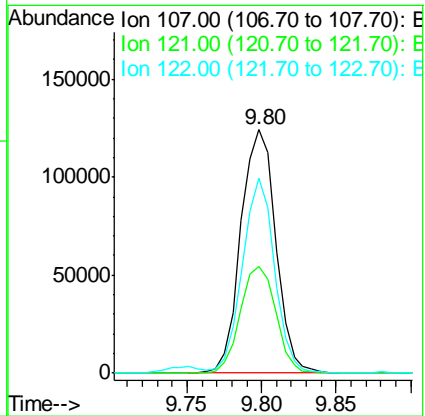
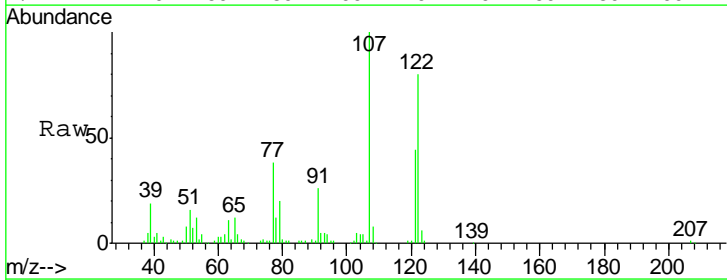
#23  
 2-Nitrophenol  
 Concen: 18.99 ng/ul  
 RT: 9.75 min Scan# 1133  
 Delta R.T. 0.01 min  
 Lab File: BM009662.D  
 Acq: 18 Apr 2017 19:25

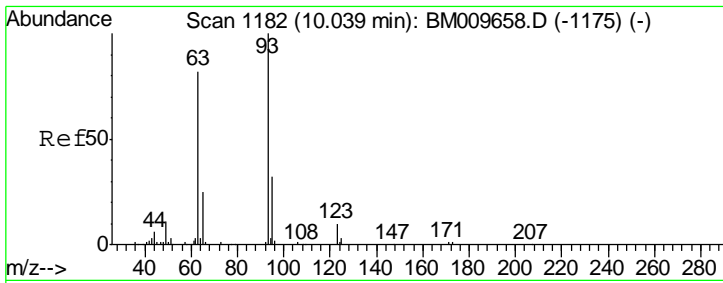
Tgt Ion	Resp	Lower	Upper
139	81744		
65	82.9	102.7	154.1#
109	50.4	71.1	106.7#



#24  
 2,4-Dimethylphenol  
 Concen: 19.89 ng/ul  
 RT: 9.80 min Scan# 1141  
 Delta R.T. -0.00 min  
 Lab File: BM009662.D  
 Acq: 18 Apr 2017 19:25

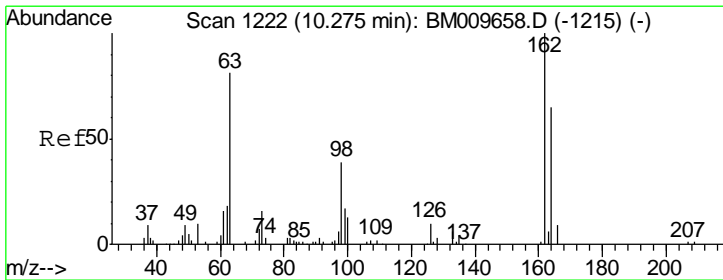
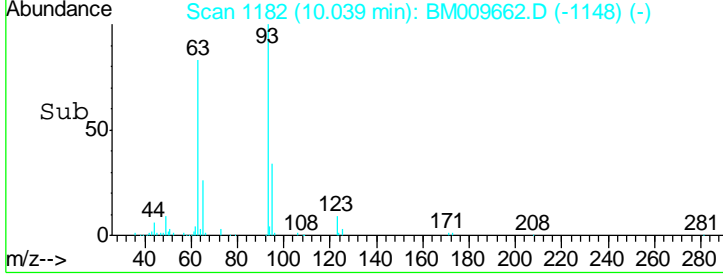
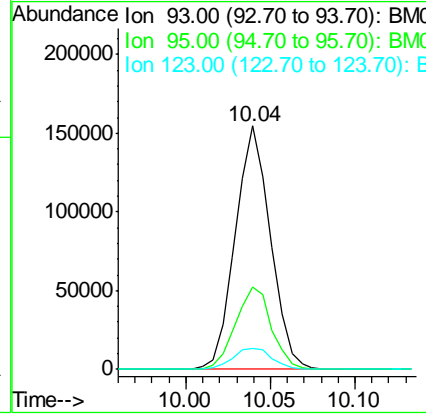
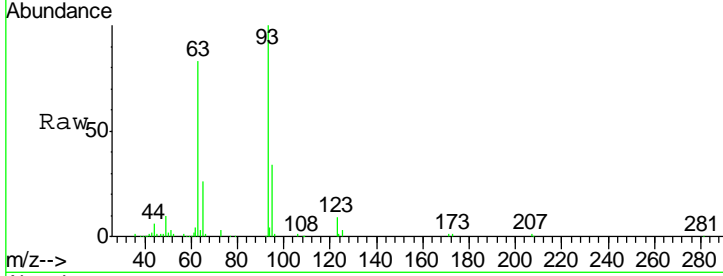
Tgt Ion	Resp	Lower	Upper
107	201553		
121	44.0	30.0	45.0
122	80.0	50.2	75.4#





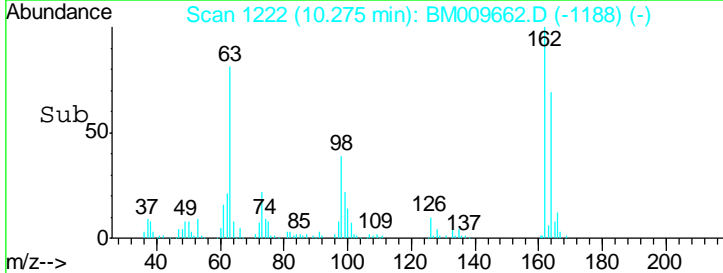
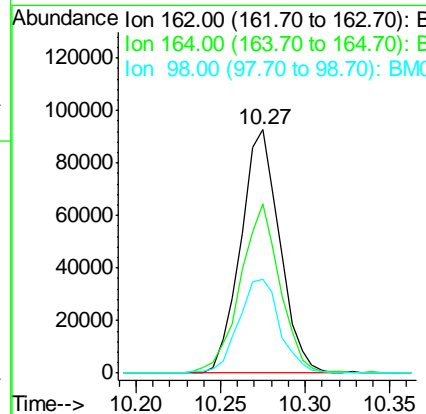
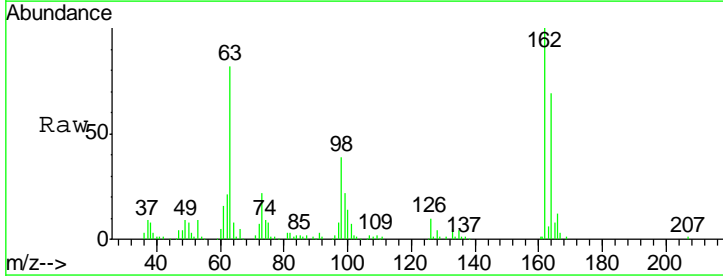
#25  
 Bis(2-Chloroethoxy)methane  
 Concen: 18.91 ng/ul  
 RT: 10.04 min Scan# 1182  
 Delta R.T. -0.00 min  
 Lab File: BM009662.D  
 Acq: 18 Apr 2017 19:25

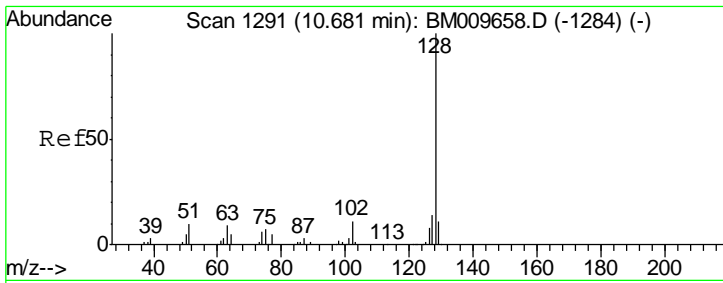
Tgt Ion	Resp	Lower	Upper
93	22351		
95	33.6	27.0	40.6
123	8.8	7.5	11.3



#27  
 2,4-Dichlorophenol  
 Concen: 19.52 ng/ul  
 RT: 10.27 min Scan# 1222  
 Delta R.T. -0.00 min  
 Lab File: BM009662.D  
 Acq: 18 Apr 2017 19:25

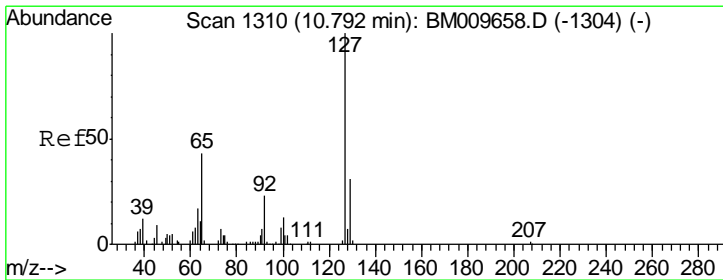
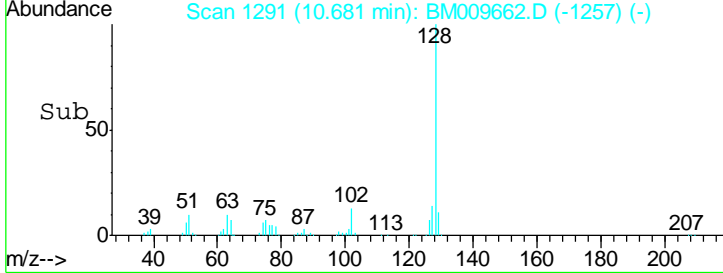
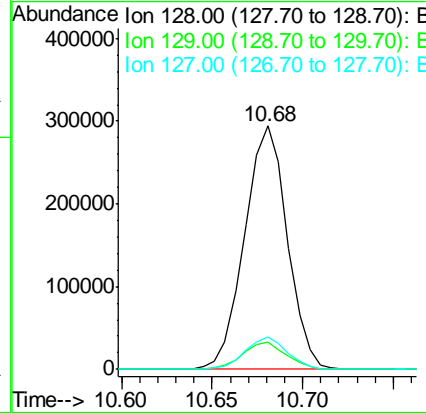
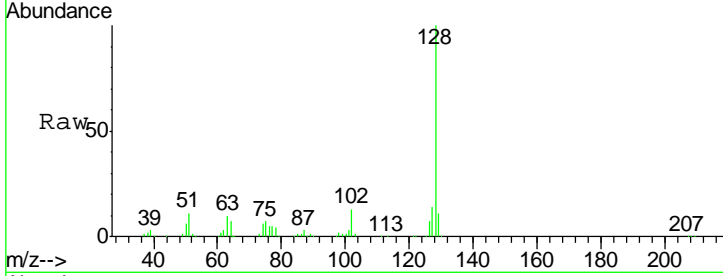
Tgt Ion	Resp	Lower	Upper
162	149545		
164	69.4	52.9	79.3
98	38.5	42.0	63.0#





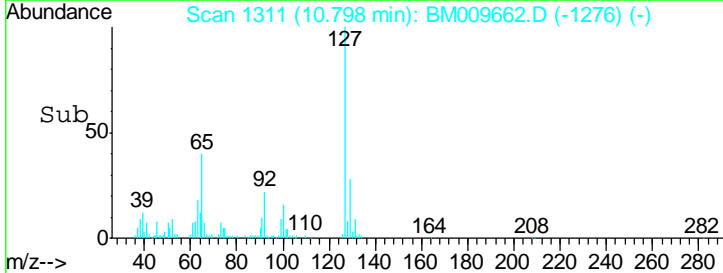
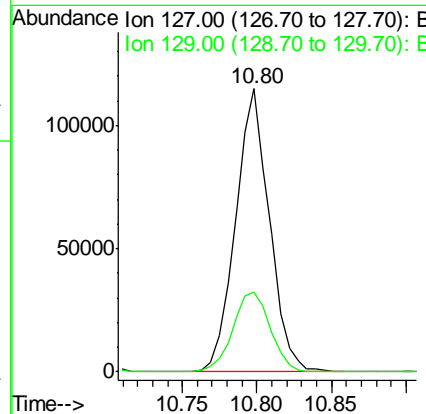
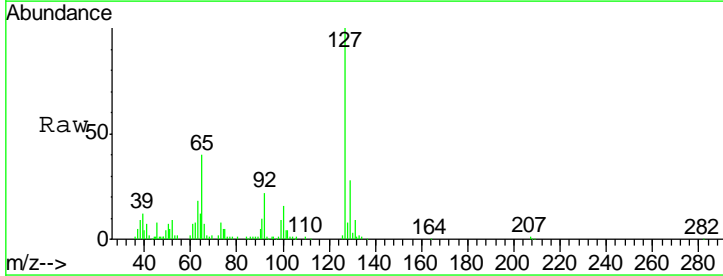
#28  
 Naphthalene  
 Concen: 19.50 ng/ul  
 RT: 10.68 min Scan# 1291  
 Delta R.T. -0.00 min  
 Lab File: BM009662.D  
 Acq: 18 Apr 2017 19:25

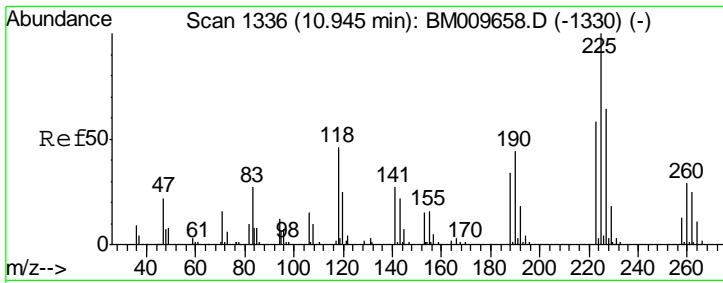
Tgt Ion	Resp	Lower	Upper
128	481321		
129	11.0	9.7	14.5
127	13.6	10.2	15.4



#30  
 4-Chloroaniline  
 Concen: 22.66 ng/ul  
 RT: 10.80 min Scan# 1311  
 Delta R.T. 0.01 min  
 Lab File: BM009662.D  
 Acq: 18 Apr 2017 19:25

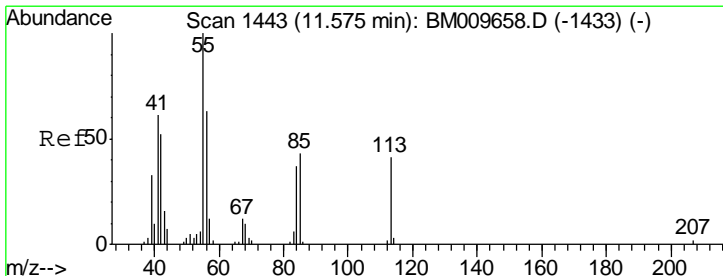
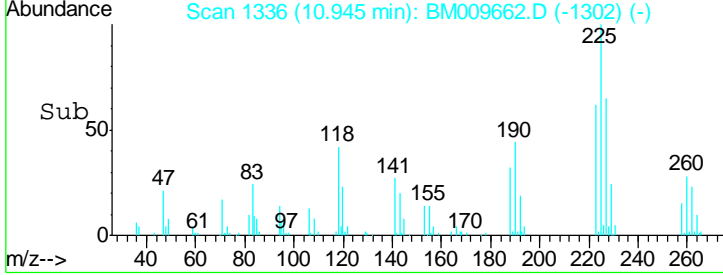
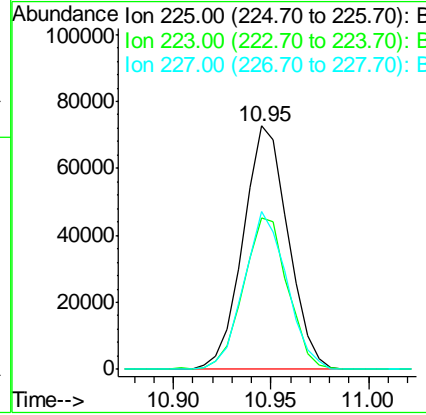
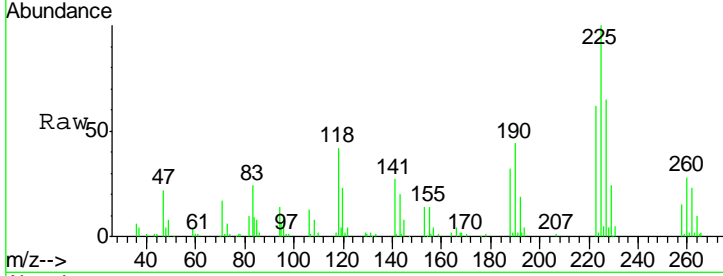
Tgt Ion	Resp	Lower	Upper
127	181590		
129	28.1	23.9	35.9





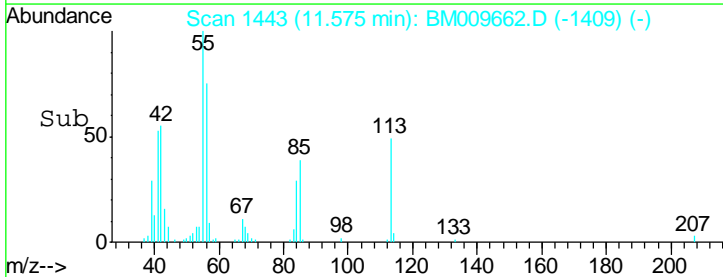
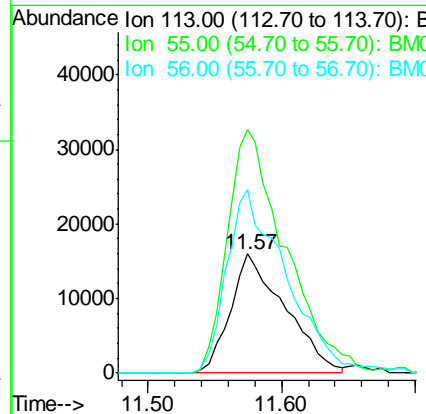
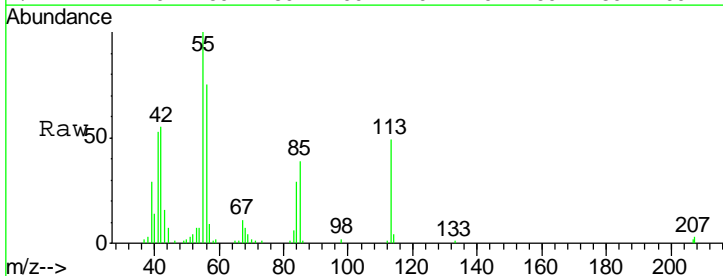
#31  
 Hexachlorobutadiene  
 Concen: 20.27 ng/ul  
 RT: 10.95 min Scan# 1336  
 Delta R.T. -0.00 min  
 Lab File: BM009662.D  
 Acq: 18 Apr 2017 19:25

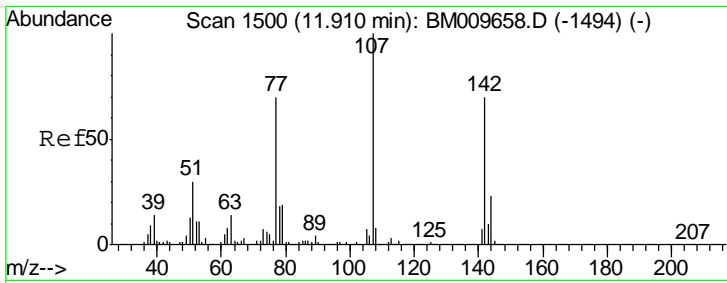
Tgt Ion	Resp	Lower	Upper
225	115894		
223	61.9	50.4	75.6
227	65.0	51.0	76.4



#32  
 Caprolactam  
 Concen: 18.17 ng/ul  
 RT: 11.57 min Scan# 1443  
 Delta R.T. -0.00 min  
 Lab File: BM009662.D  
 Acq: 18 Apr 2017 19:25

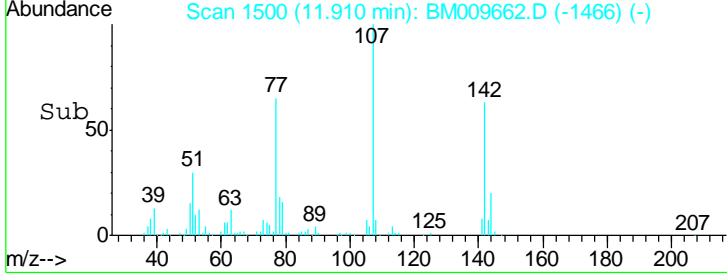
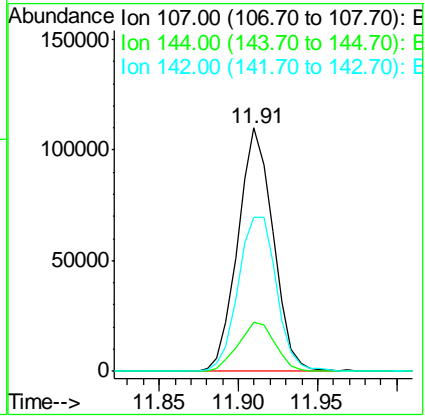
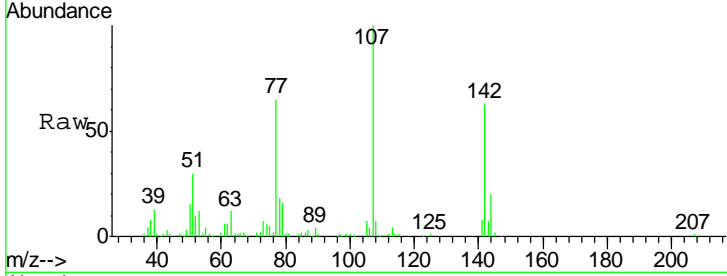
Tgt Ion	Resp	Lower	Upper
113	45450		
55	204.5	189.3	283.9
56	154.3	165.8	248.6





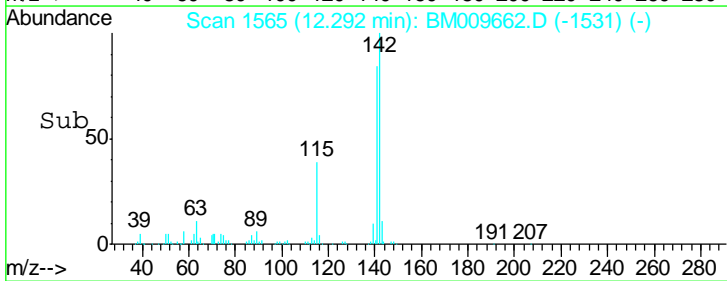
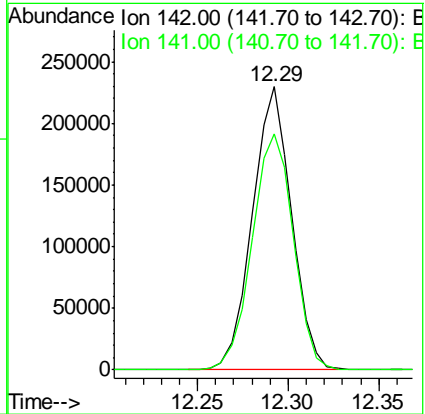
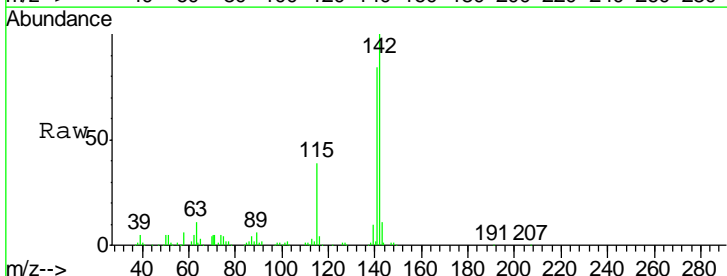
#33  
 4-Chloro-3-methylphenol  
 Concen: 19.78 ng/ul  
 RT: 11.91 min Scan# 1500  
 Delta R.T. -0.00 min  
 Lab File: BM009662.D  
 Acq: 18 Apr 2017 19:25

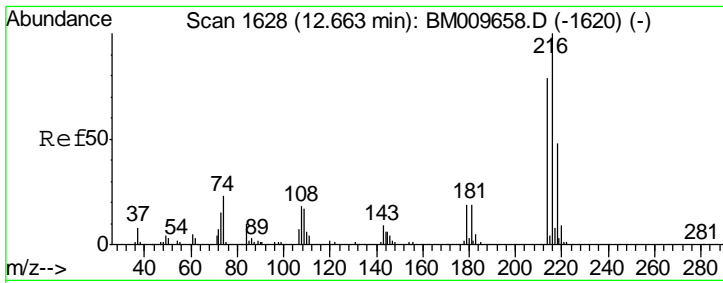
Tgt Ion	Resp	Lower	Upper
107	170475		
144	20.2	14.4	21.6
142	63.3	50.7	76.1



#34  
 2-Methylnaphthalene  
 Concen: 19.76 ng/ul  
 RT: 12.29 min Scan# 1565  
 Delta R.T. -0.00 min  
 Lab File: BM009662.D  
 Acq: 18 Apr 2017 19:25

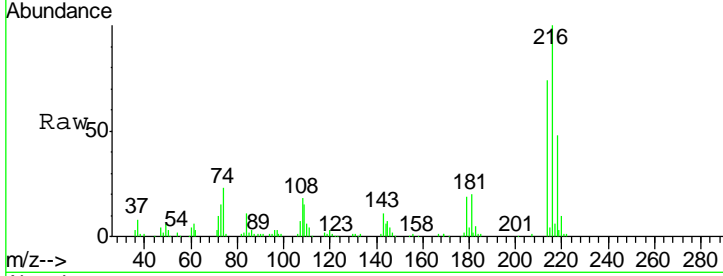
Tgt Ion	Resp	Lower	Upper
142	344895		
141	83.6	72.6	109.0



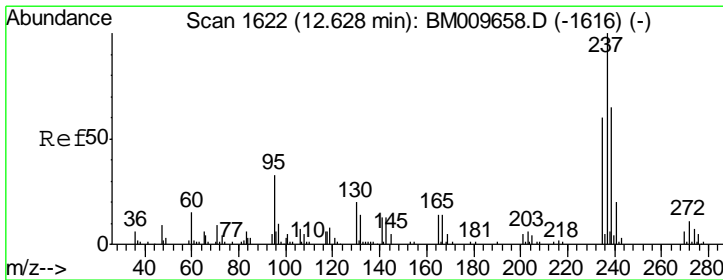
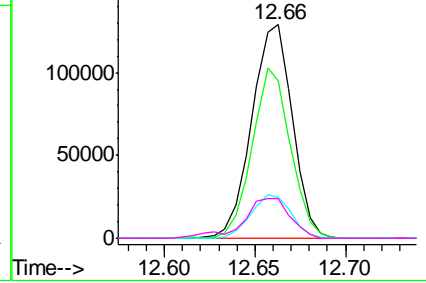
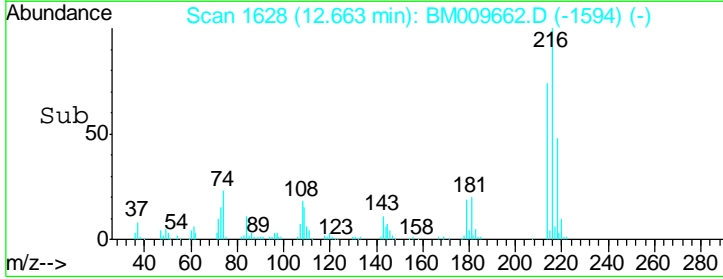


#36  
 1,2,4,5-Tetrachlorobenzene  
 Concen: 19.87 ng/ul  
 RT: 12.66 min Scan# 1628  
 Delta R.T. -0.00 min  
 Lab File: BM009662.D  
 Acq: 18 Apr 2017 19:25

Tgt Ion	Resp	Lower	Upper
216	100		
214	73.5	61.1	91.7
179	19.1	17.7	26.5
108	18.4	19.4	29.2#

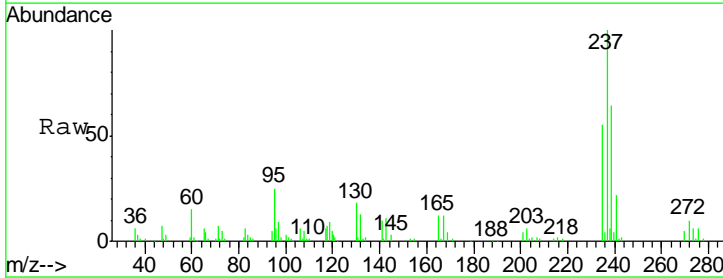


Abundance Ion 216.00 (215.70 to 216.70): E  
 200000  
 Ion 214.00 (213.70 to 214.70): E  
 150000  
 Ion 179.00 (178.70 to 179.70): E  
 100000  
 Ion 108.00 (107.70 to 108.70): E  
 50000  
 0

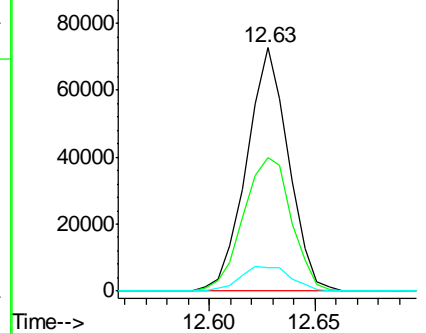
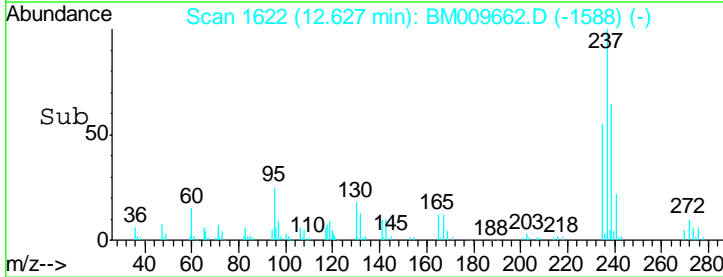


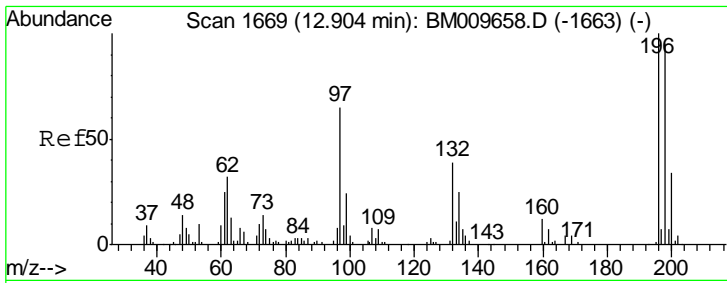
#37  
 Hexachlorocyclopentadiene  
 Concen: 18.18 ng/ul  
 RT: 12.63 min Scan# 1622  
 Delta R.T. -0.00 min  
 Lab File: BM009662.D  
 Acq: 18 Apr 2017 19:25

Tgt Ion	Resp	Lower	Upper
237	100		
235	54.9	49.0	73.6
272	9.9	9.8	14.6



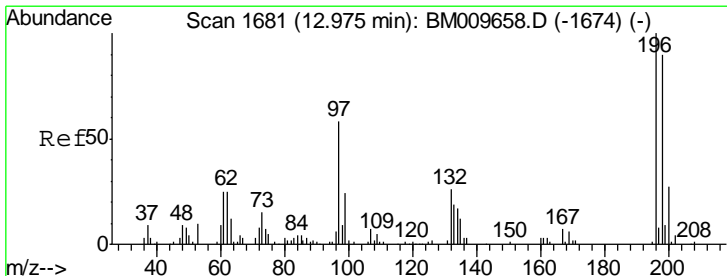
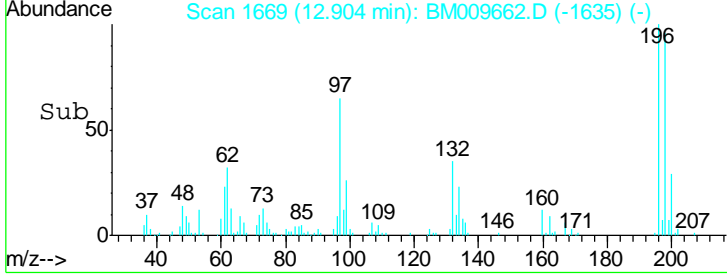
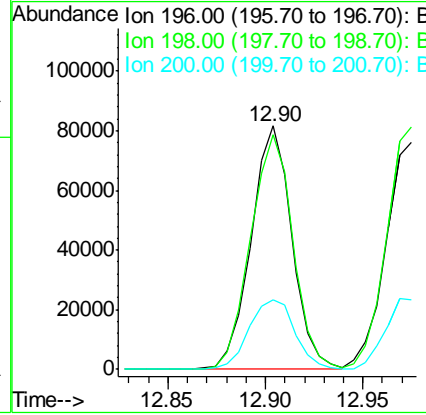
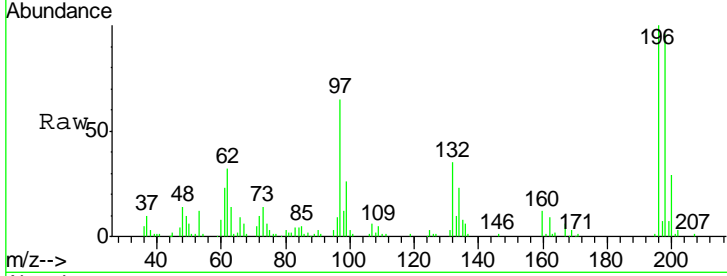
Abundance Ion 237.00 (236.70 to 237.70): E  
 100000  
 Ion 235.00 (234.70 to 235.70): E  
 80000  
 Ion 272.00 (271.70 to 272.70): E  
 60000  
 40000  
 20000  
 0





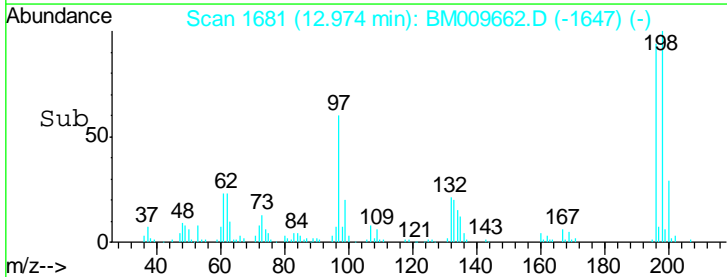
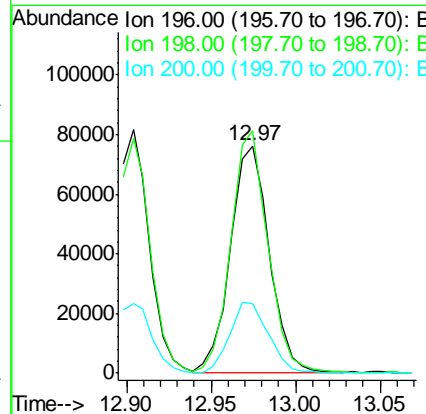
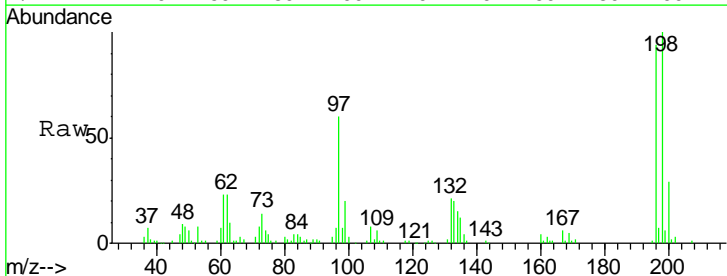
#38  
 2,4,6-Trichlorophenol  
 Concen: 18.29 ng/ul  
 RT: 12.90 min Scan# 1669  
 Delta R.T. -0.00 min  
 Lab File: BM009662.D  
 Acq: 18 Apr 2017 19:25

Tgt Ion	Resp	Lower	Upper
196	118318		
198	96.4	70.2	105.2
200	28.6	23.8	35.6

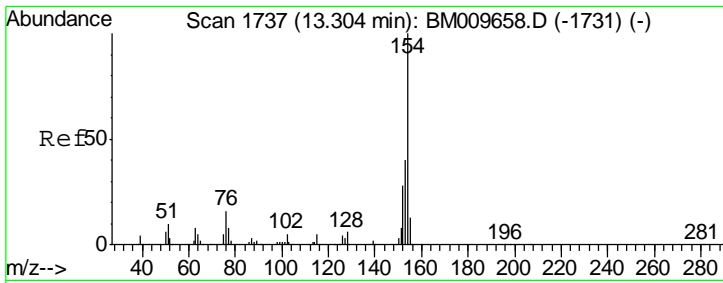


#39  
 2,4,5-Trichlorophenol  
 Concen: 18.75 ng/ul  
 RT: 12.97 min Scan# 1681  
 Delta R.T. -0.00 min  
 Lab File: BM009662.D  
 Acq: 18 Apr 2017 19:25

Tgt Ion	Resp	Lower	Upper
196	122583		
198	106.5	72.2	108.4
200	30.4	22.5	33.7

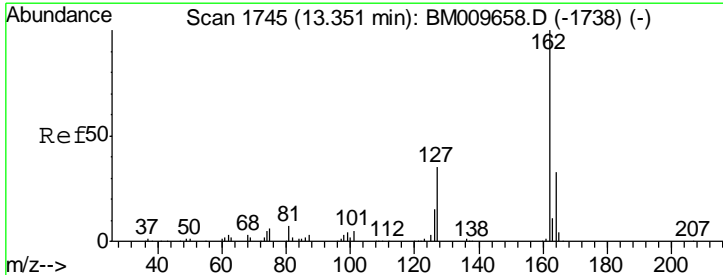
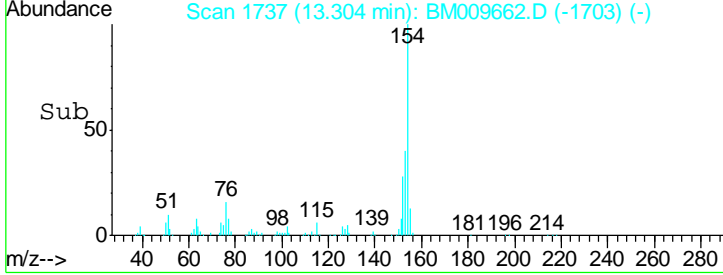
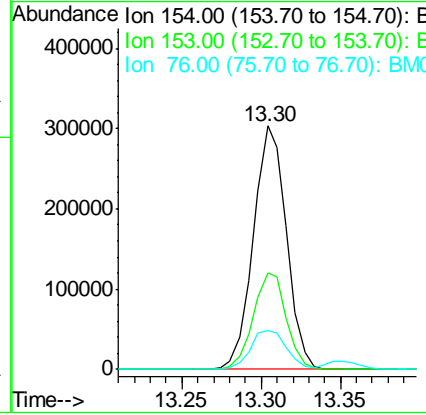
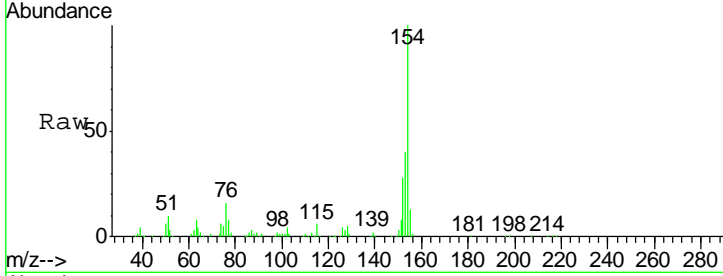






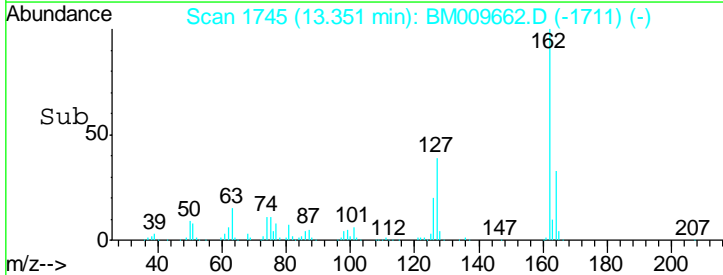
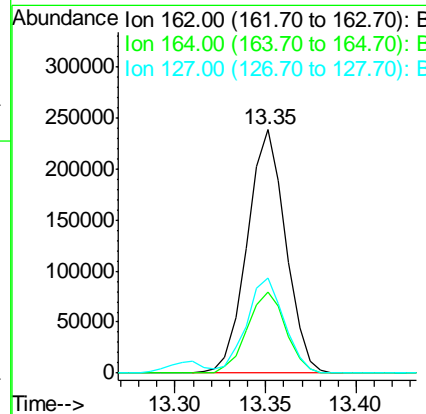
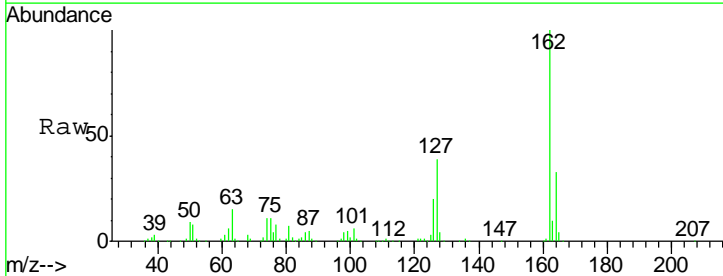
#40  
 1,1'-Biphenyl  
 Concen: 19.03 ng/ul  
 RT: 13.30 min Scan# 1737  
 Delta R.T. -0.00 min  
 Lab File: BM009662.D  
 Acq: 18 Apr 2017 19:25

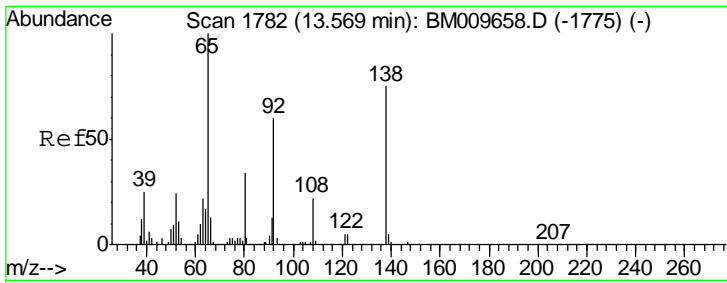
Tgt Ion	Resp	Lower	Upper
154	438709		
153	39.5	35.7	53.5
76	15.9	12.4	18.6



#41  
 2-Chloronaphthalene  
 Concen: 19.30 ng/ul  
 RT: 13.35 min Scan# 1745  
 Delta R.T. -0.00 min  
 Lab File: BM009662.D  
 Acq: 18 Apr 2017 19:25

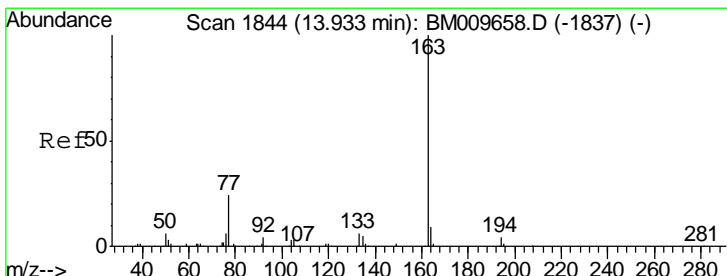
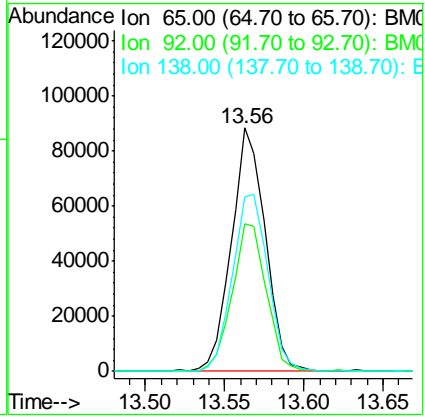
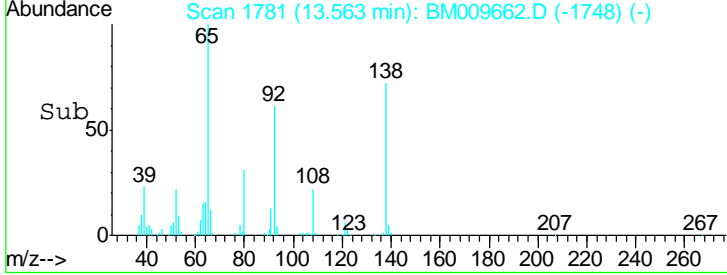
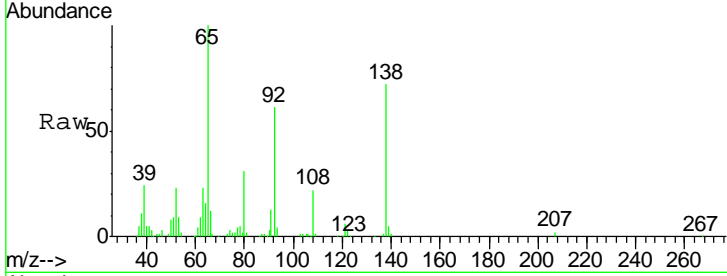
Tgt Ion	Resp	Lower	Upper
162	351305		
164	33.4	25.0	37.4
127	38.9	33.7	50.5





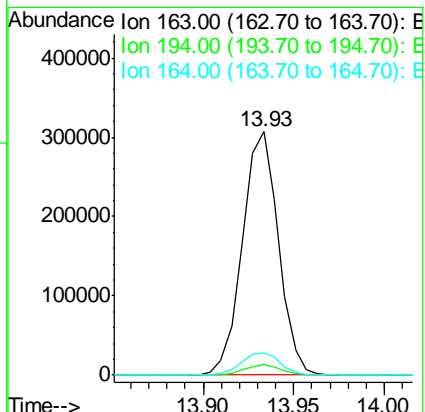
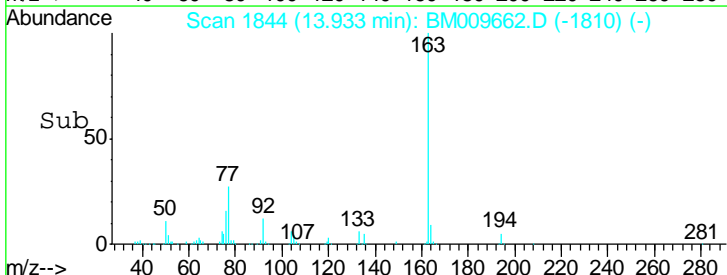
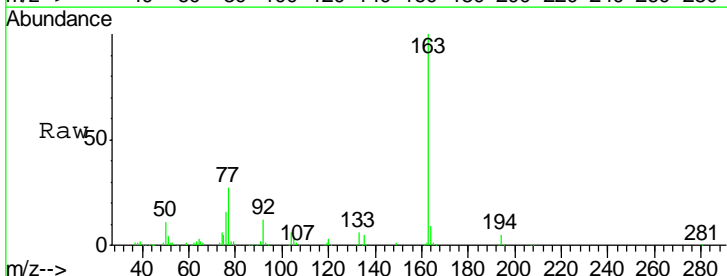
#42  
 2-Nitroaniline  
 Concen: 18.77 ng/ul  
 RT: 13.56 min Scan# 1781  
 Delta R.T. -0.01 min  
 Lab File: BM009662.D  
 Acq: 18 Apr 2017 19:25

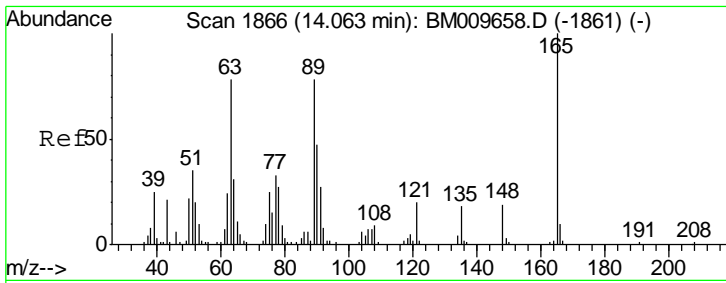
Tgt Ion	Resp	Lower	Upper
65	130701		
92	60.6	41.6	62.4
138	71.6	40.9	61.3#



#44  
 Dimethylphthalate  
 Concen: 18.95 ng/ul  
 RT: 13.93 min Scan# 1844  
 Delta R.T. -0.00 min  
 Lab File: BM009662.D  
 Acq: 18 Apr 2017 19:25

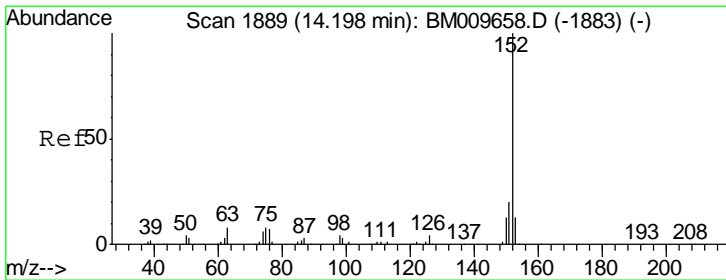
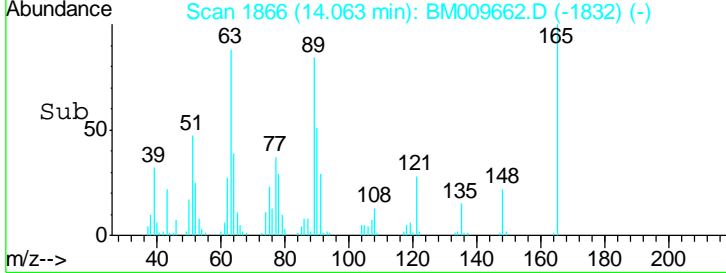
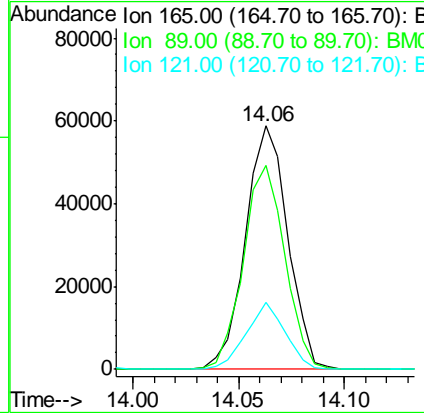
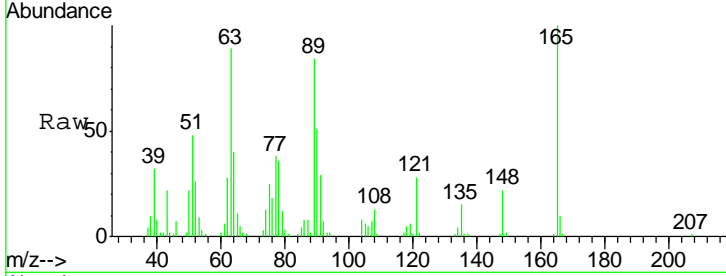
Tgt Ion	Resp	Lower	Upper
163	422626		
194	4.5	3.0	4.6
164	9.4	8.6	12.8





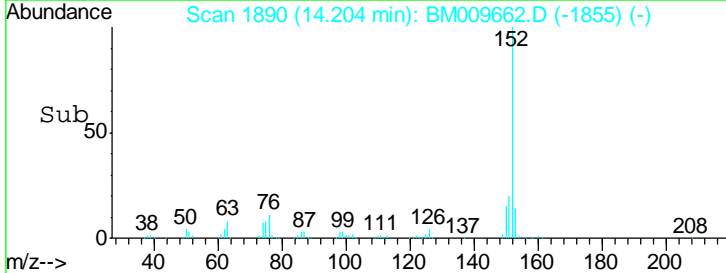
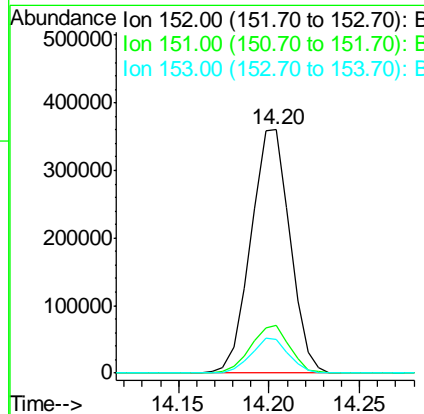
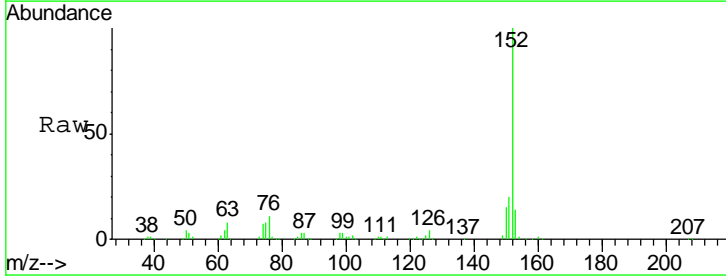
#45  
 2,6-Dinitrotoluene  
 Concen: 18.43 ng/ul  
 RT: 14.06 min Scan# 1866  
 Delta R.T. -0.00 min  
 Lab File: BM009662.D  
 Acq: 18 Apr 2017 19:25

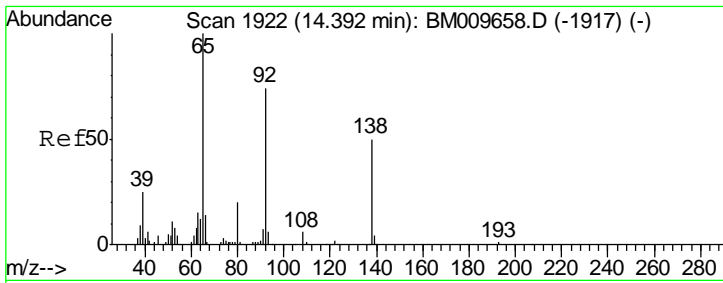
Tgt Ion	Resp	Lower	Upper
165	82071		
89	83.6	89.4	134.0#
121	27.5	21.6	32.4



#47  
 Acenaphthylene  
 Concen: 19.17 ng/ul  
 RT: 14.20 min Scan# 1890  
 Delta R.T. 0.01 min  
 Lab File: BM009662.D  
 Acq: 18 Apr 2017 19:25

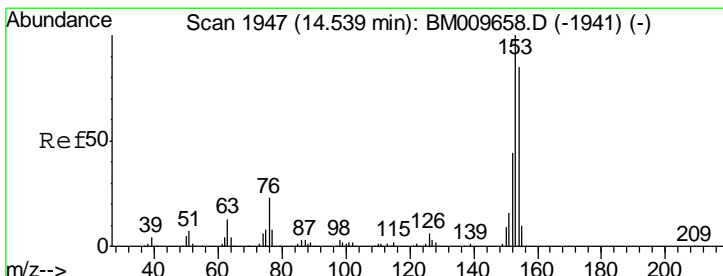
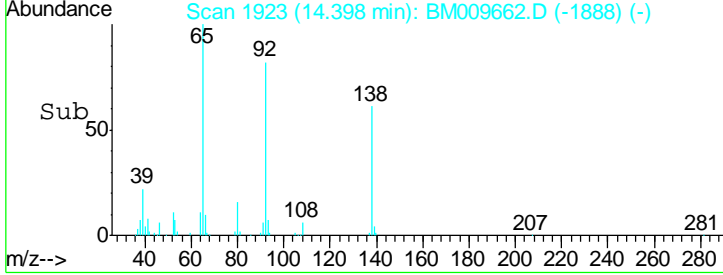
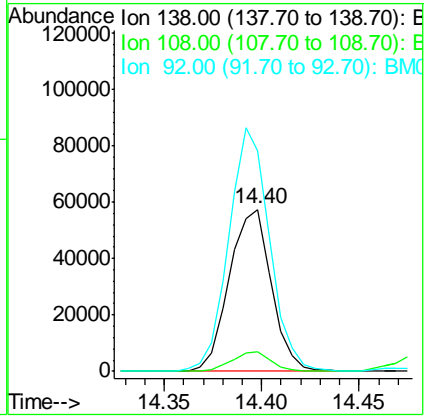
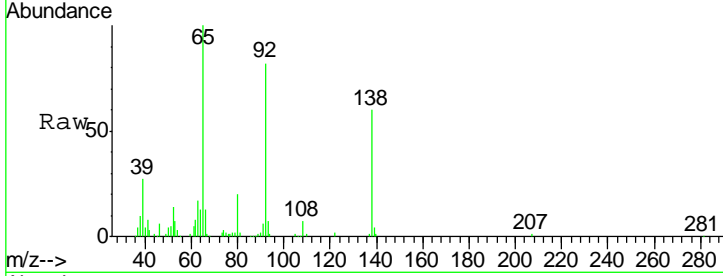
Tgt Ion	Resp	Lower	Upper
152	539953		
151	19.6	15.8	23.6
153	14.0	10.5	15.7





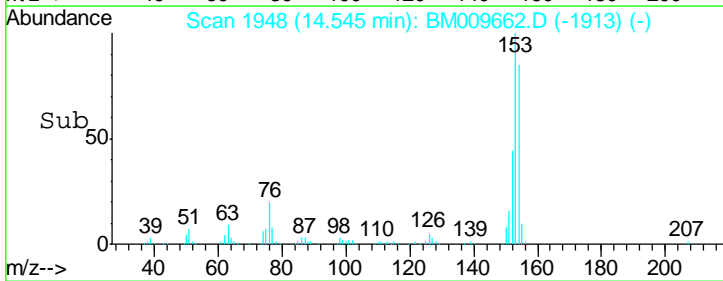
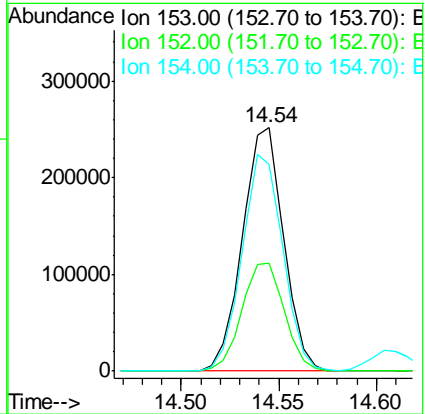
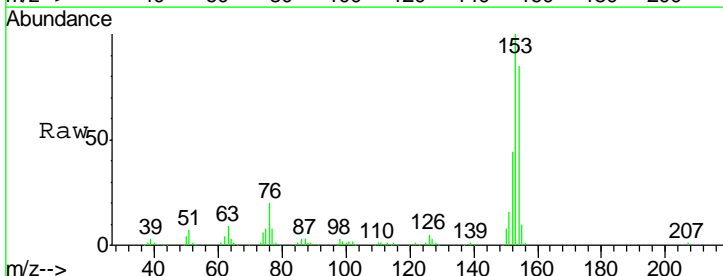
#48  
 3-Nitroaniline  
 Concen: 19.53 ng/ul  
 RT: 14.40 min Scan# 1923  
 Delta R.T. 0.01 min  
 Lab File: BM009662.D  
 Acq: 18 Apr 2017 19:25

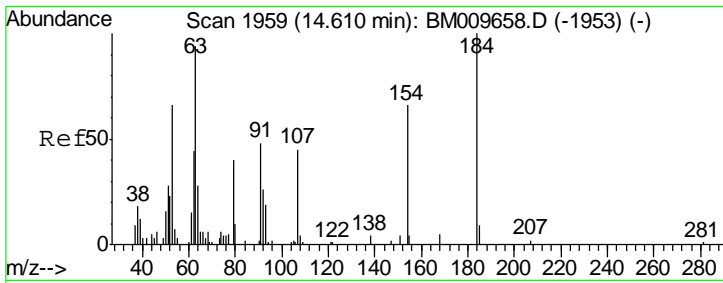
Tgt Ion	Resp	Lower	Upper
138	100		
108	12.2	13.9	20.9#
92	136.2	137.8	206.8#



#49  
 Acenaphthene  
 Concen: 19.43 ng/ul  
 RT: 14.54 min Scan# 1948  
 Delta R.T. 0.01 min  
 Lab File: BM009662.D  
 Acq: 18 Apr 2017 19:25

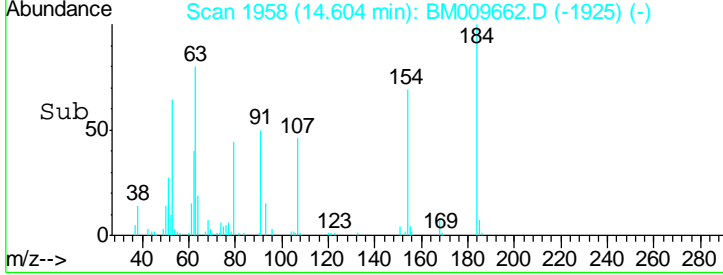
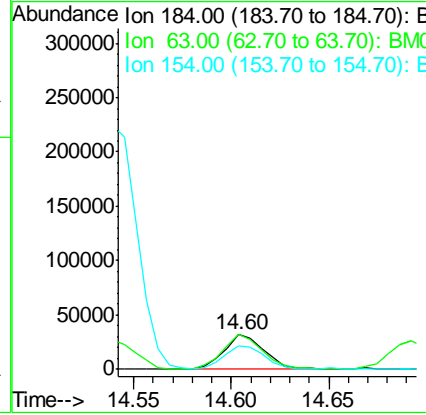
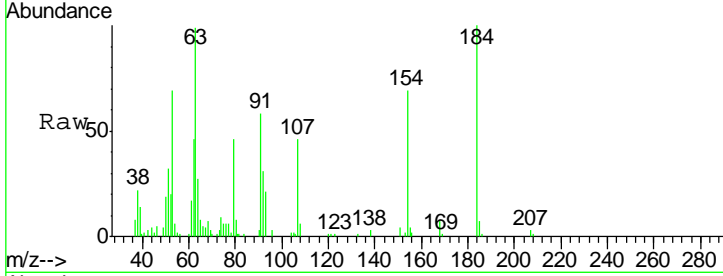
Tgt Ion	Resp	Lower	Upper
153	100		
152	44.1	36.7	55.1
154	85.0	68.3	102.5





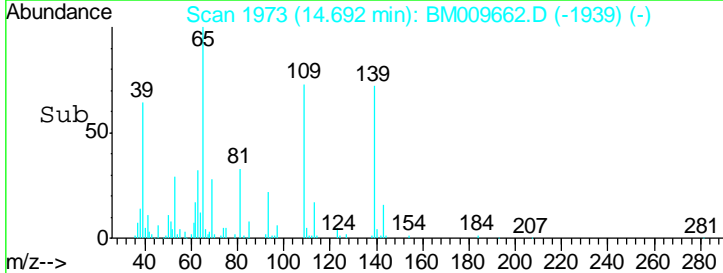
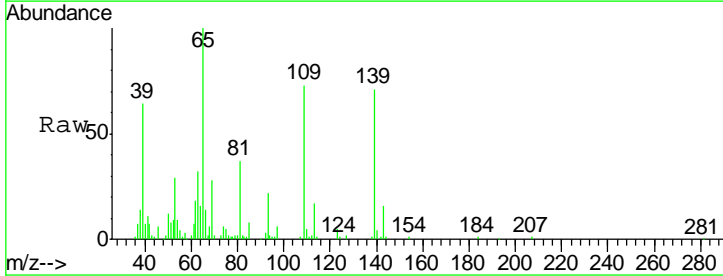
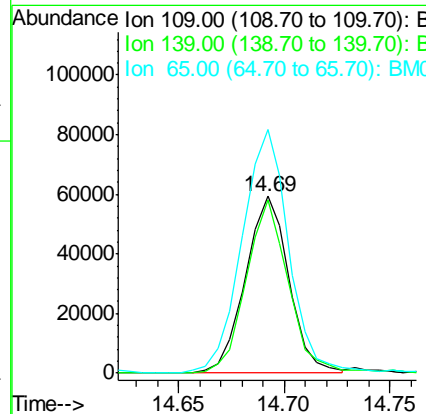
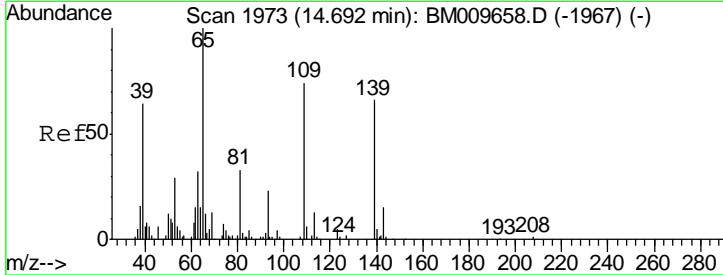
#50  
 2,4-Dinitrophenol  
 Concen: 16.68 ng/ul  
 RT: 14.60 min Scan# 1958  
 Delta R.T. -0.01 min  
 Lab File: BM009662.D  
 Acq: 18 Apr 2017 19:25

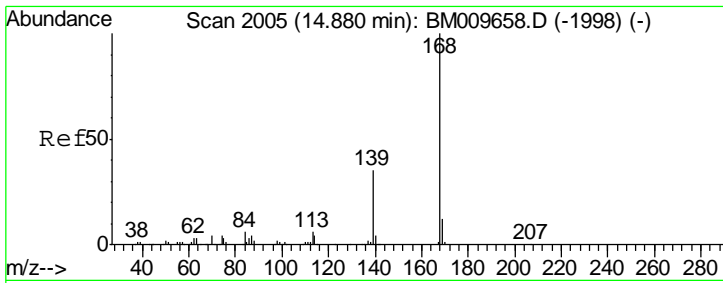
Tgt Ion	Resp	Lower	Upper
184	46035		
63	99.0	99.6	149.4#
154	69.0	76.5	114.7#



#52  
 4-Nitrophenol  
 Concen: 18.26 ng/ul  
 RT: 14.69 min Scan# 1973  
 Delta R.T. -0.00 min  
 Lab File: BM009662.D  
 Acq: 18 Apr 2017 19:25

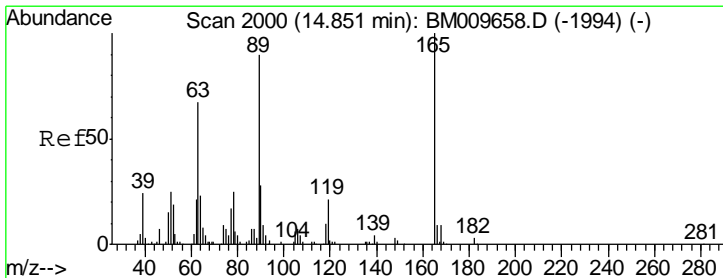
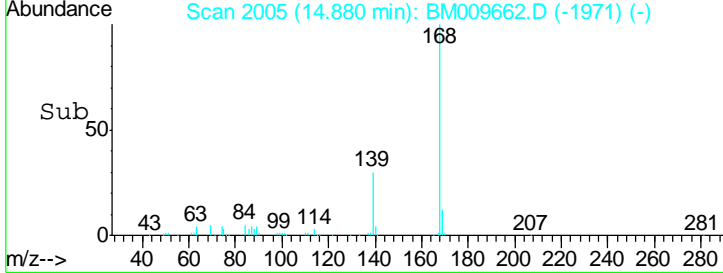
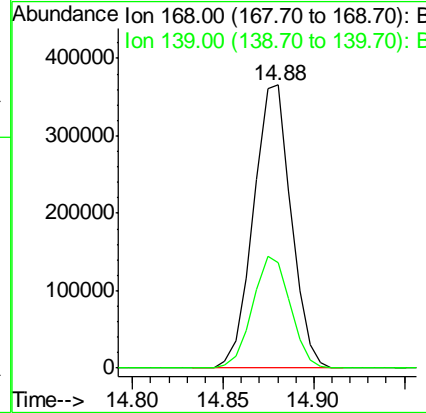
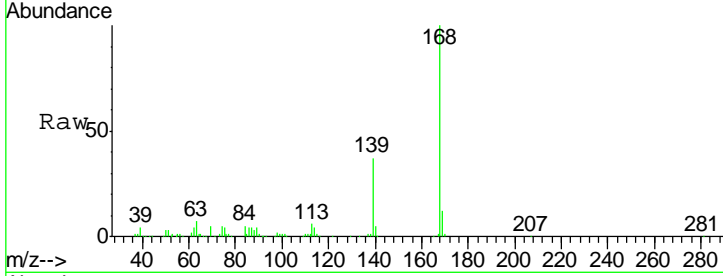
Tgt Ion	Resp	Lower	Upper
109	84856		
139	98.2	33.9	50.9#
65	137.7	92.2	138.2





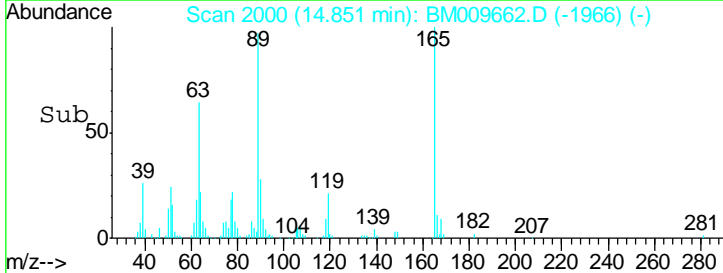
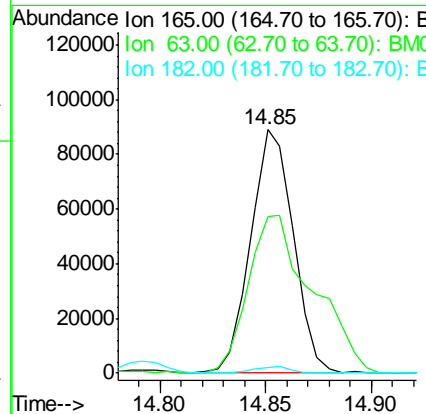
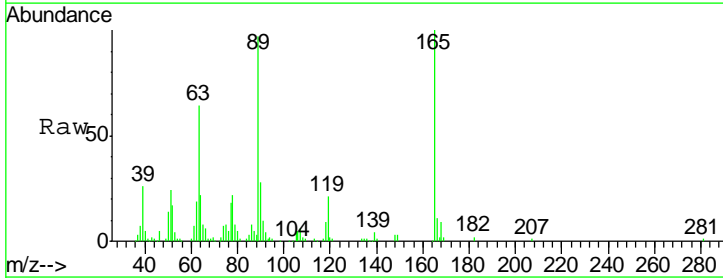
#53  
 Dibenzofuran  
 Concen: 19.40 ng/ul  
 RT: 14.88 min Scan# 2005  
 Delta R.T. -0.00 min  
 Lab File: BM009662.D  
 Acq: 18 Apr 2017 19:25

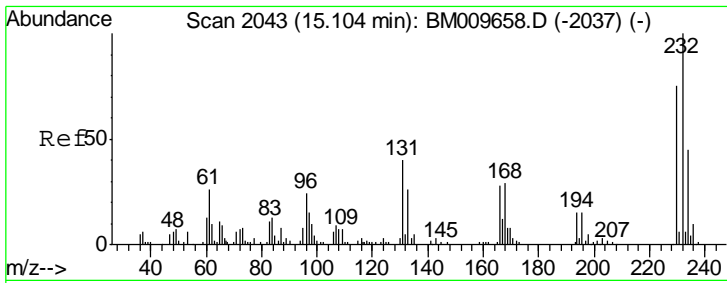
Tgt Ion	Resp	Lower	Upper
168	528995		
139	37.3	35.6	53.4



#54  
 2,4-Dinitrotoluene  
 Concen: 18.96 ng/ul  
 RT: 14.85 min Scan# 2000  
 Delta R.T. -0.00 min  
 Lab File: BM009662.D  
 Acq: 18 Apr 2017 19:25

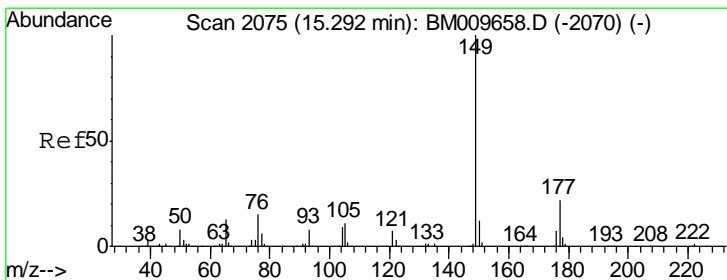
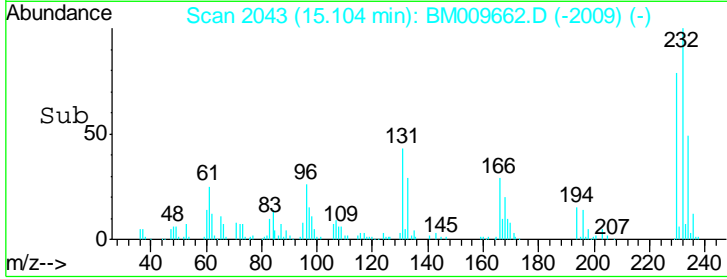
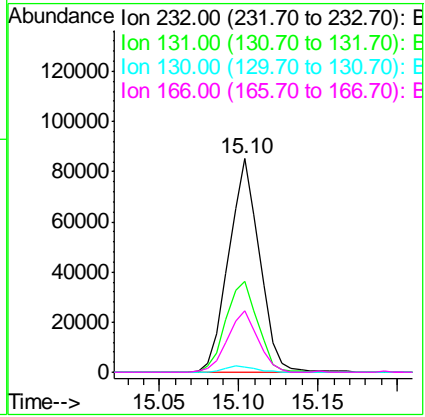
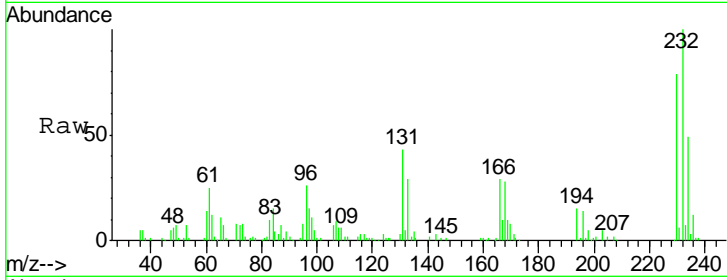
Tgt Ion	Resp	Lower	Upper
165	125002		
63	64.3	75.7	113.5#
182	2.3	1.7	2.5





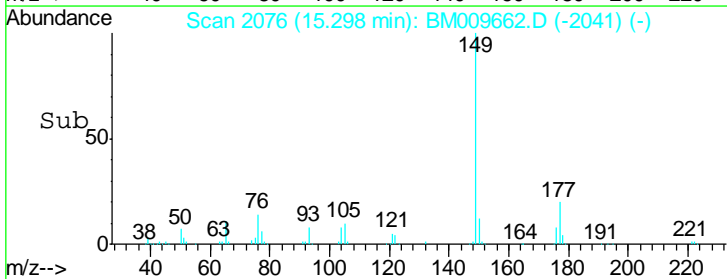
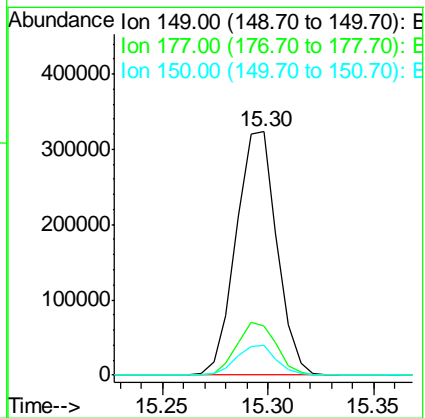
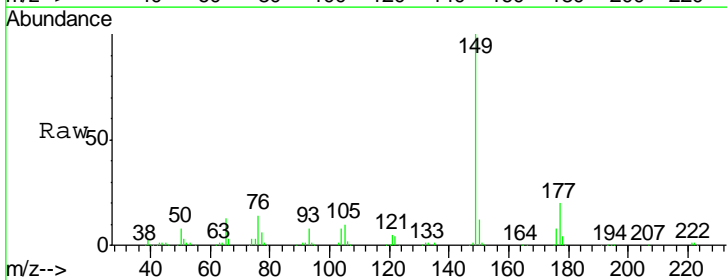
#55  
 2,3,4,6-Tetrachlorophenol  
 Concen: 19.22 ng/ul  
 RT: 15.10 min Scan# 2043  
 Delta R.T. -0.00 min  
 Lab File: BM009662.D  
 Acq: 18 Apr 2017 19:25

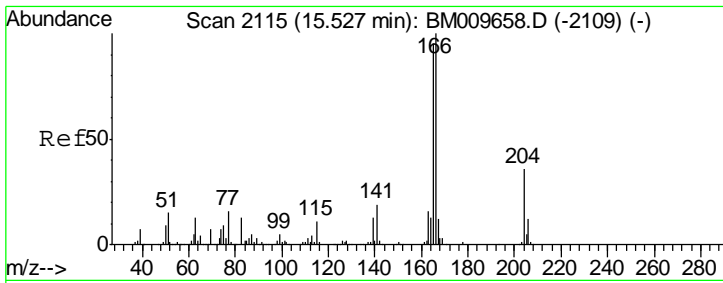
Tgt Ion	Resp	Lower	Upper
232	115479		
131	42.8	39.0	58.4
130	2.6	2.8	4.2#
166	28.8	24.6	36.8



#56  
 Diethylphthalate  
 Concen: 19.00 ng/ul  
 RT: 15.30 min Scan# 2076  
 Delta R.T. 0.01 min  
 Lab File: BM009662.D  
 Acq: 18 Apr 2017 19:25

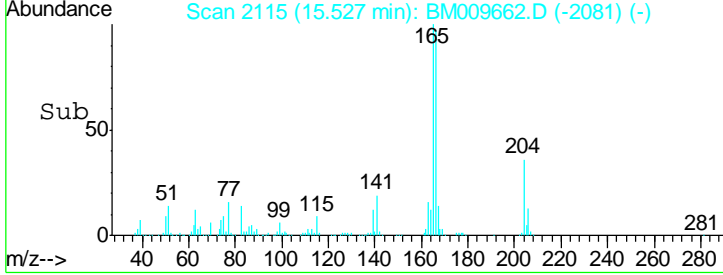
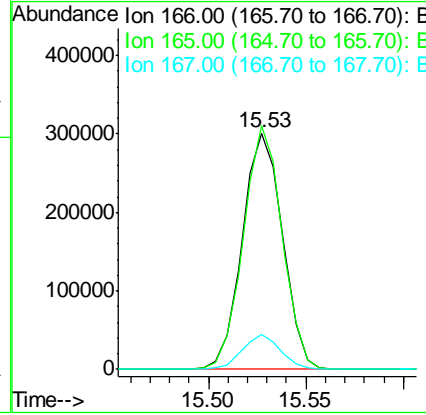
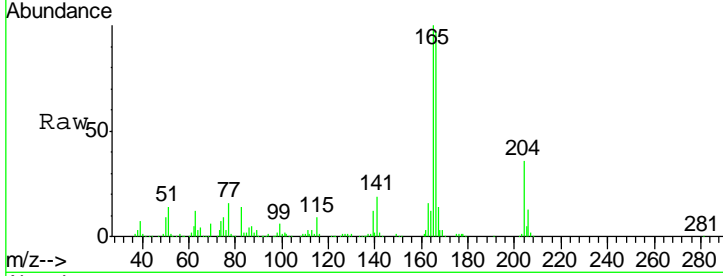
Tgt Ion	Resp	Lower	Upper
149	433084		
177	20.3	17.3	25.9
150	12.1	11.0	16.6





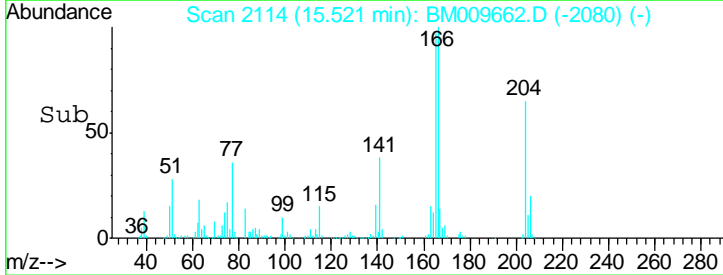
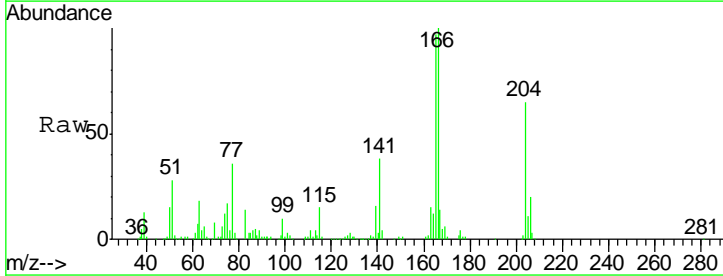
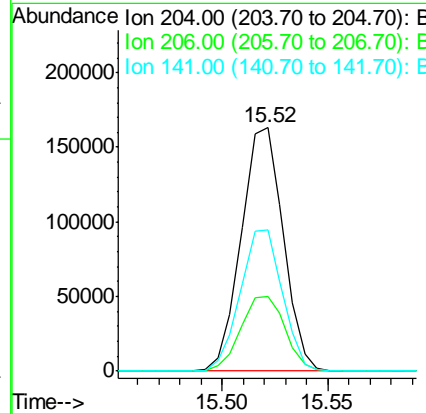
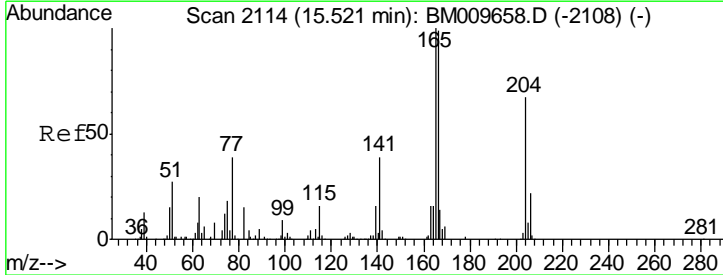
#58  
 Fluorene  
 Concen: 18.98 ng/ul  
 RT: 15.53 min Scan# 2115  
 Delta R.T. -0.00 min  
 Lab File: BM009662.D  
 Acq: 18 Apr 2017 19:25

Tgt Ion	Resp	Lower	Upper
166	429314		
165	103.1	81.0	121.6
167	14.6	10.5	15.7

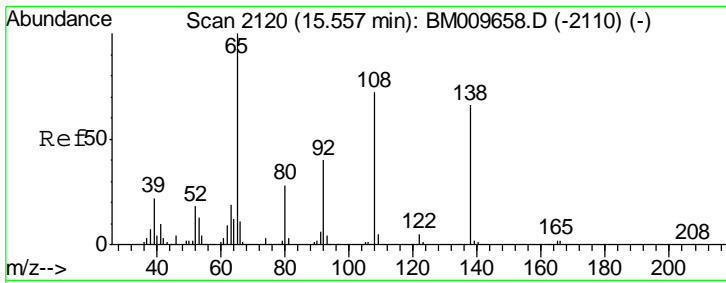


#59  
 4-Chlorophenyl-phenylether  
 Concen: 19.17 ng/ul  
 RT: 15.52 min Scan# 2114  
 Delta R.T. -0.00 min  
 Lab File: BM009662.D  
 Acq: 18 Apr 2017 19:25

Tgt Ion	Resp	Lower	Upper
204	225408		
206	30.7	22.6	34.0
141	58.0	48.3	72.5

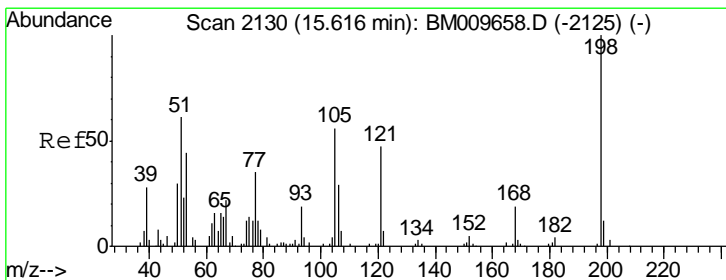
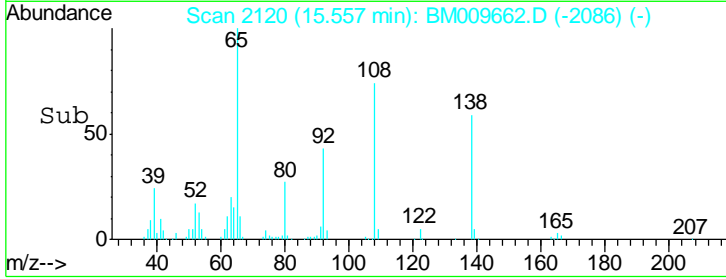
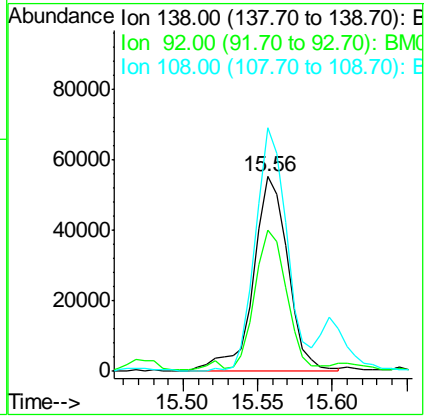
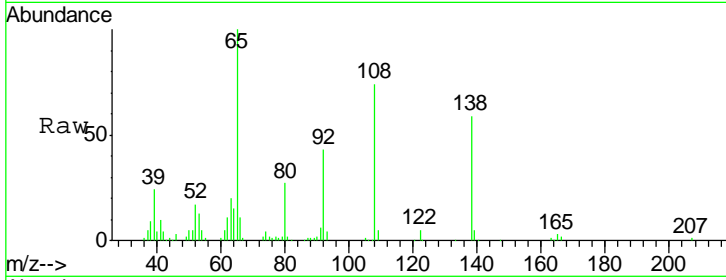






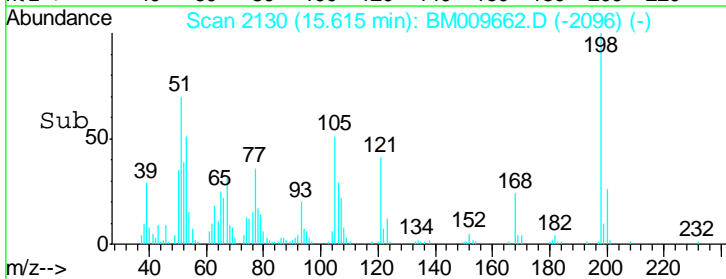
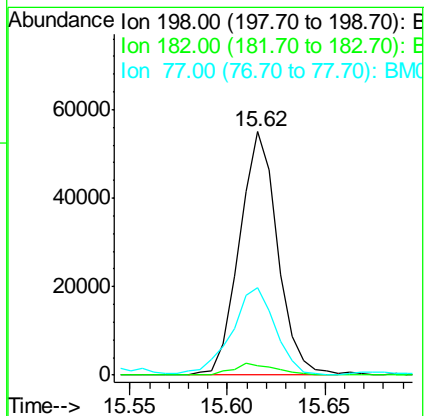
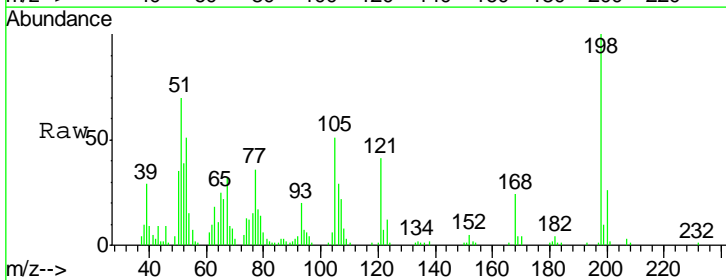
#60  
 4-Nitroaniline  
 Concen: 18.34 ng/ul  
 RT: 15.56 min Scan# 2120  
 Delta R.T. -0.00 min  
 Lab File: BM009662.D  
 Acq: 18 Apr 2017 19:25

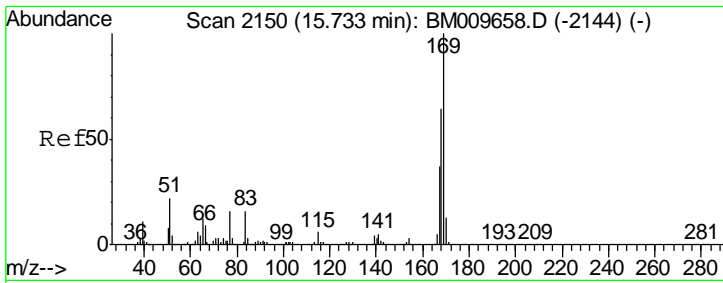
Tgt Ion	Resp	Lower	Upper
138	100		
92	72.5	79.3	118.9#
108	125.0	207.0	310.4#



#63  
 4,6-Dinitro-2-methylphenol  
 Concen: 18.03 ng/ul  
 RT: 15.62 min Scan# 2130  
 Delta R.T. -0.00 min  
 Lab File: BM009662.D  
 Acq: 18 Apr 2017 19:25

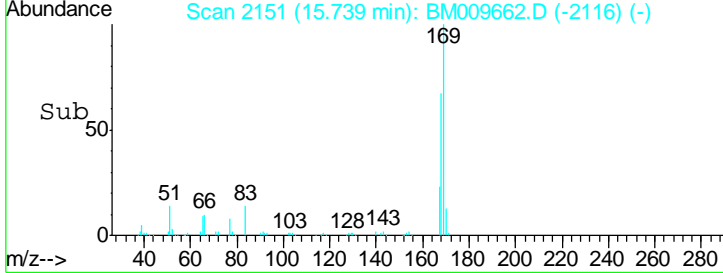
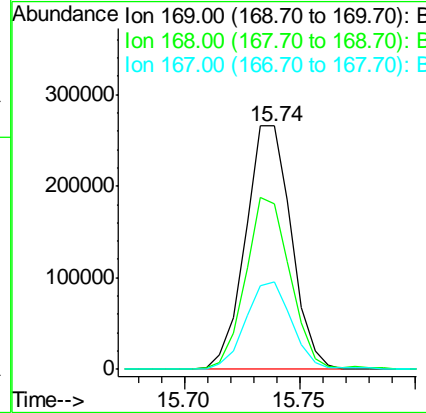
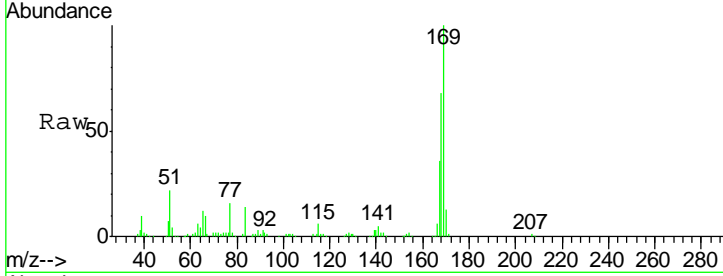
Tgt Ion	Resp	Lower	Upper
198	100		
182	3.9	3.0	4.4
77	35.9	37.6	56.4#





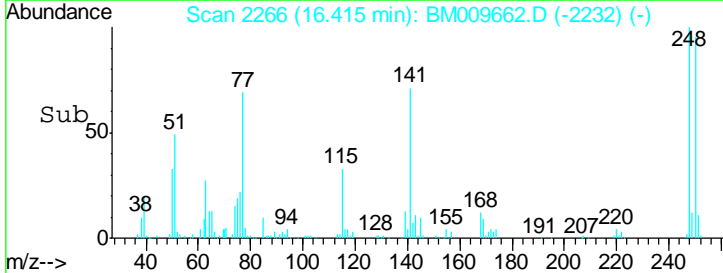
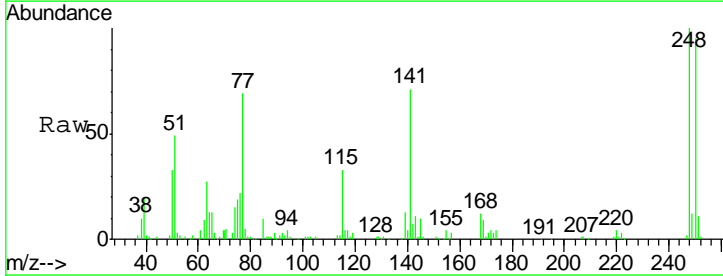
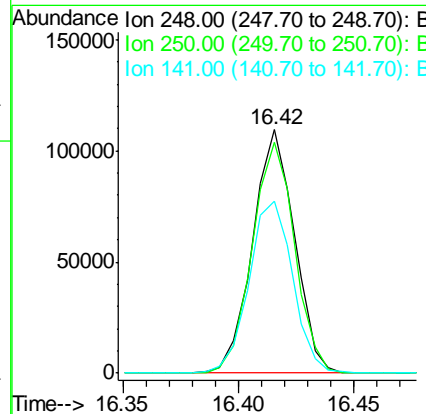
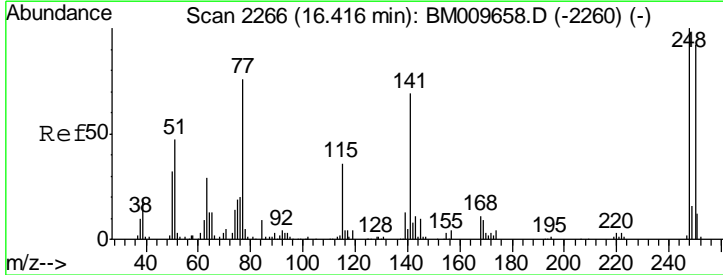
#64  
 N-Nitrosodiphenylamine  
 Concen: 19.43 ng/ul  
 RT: 15.74 min Scan# 2151  
 Delta R.T. 0.01 min  
 Lab File: BM009662.D  
 Acq: 18 Apr 2017 19:25

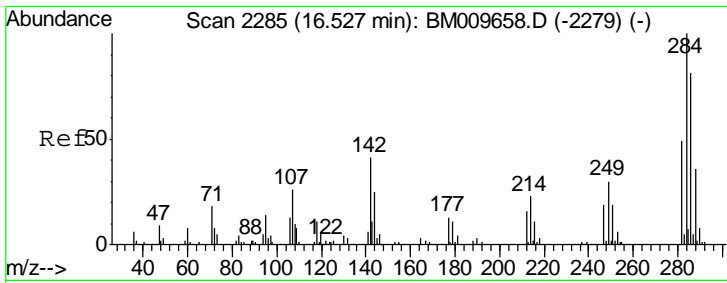
Tgt Ion	Resp	Lower	Upper
169	100		
168	68.2	53.4	80.2
167	35.7	30.2	45.2



#65  
 4-Bromophenyl-phenylether  
 Concen: 19.52 ng/ul  
 RT: 16.42 min Scan# 2266  
 Delta R.T. -0.00 min  
 Lab File: BM009662.D  
 Acq: 18 Apr 2017 19:25

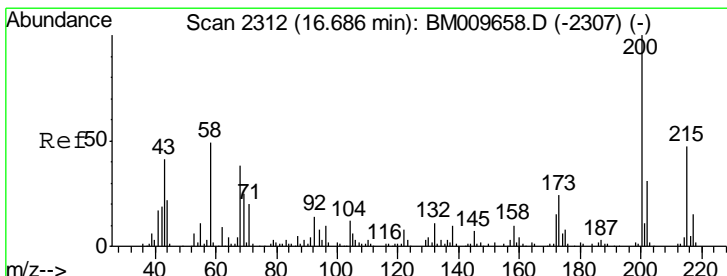
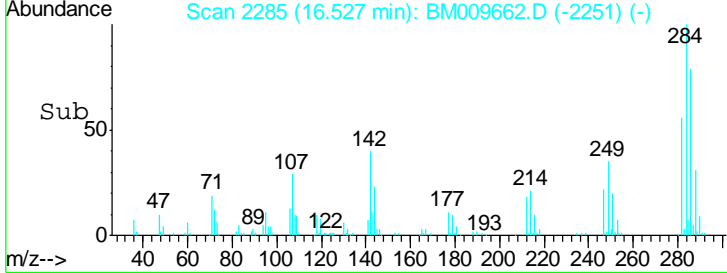
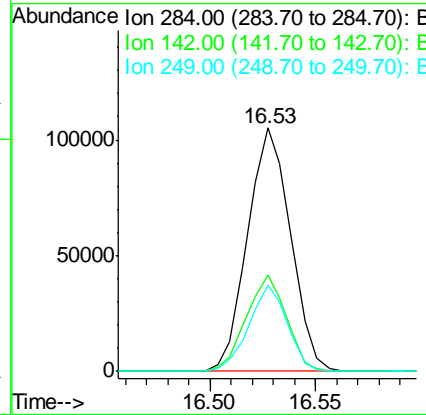
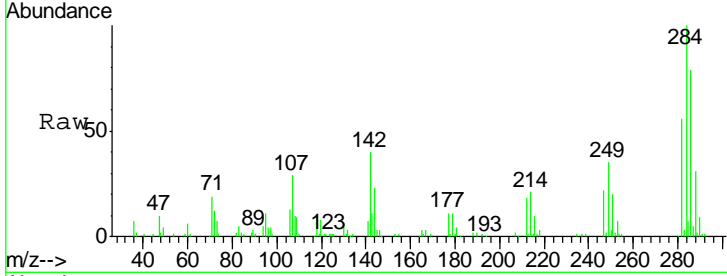
Tgt Ion	Resp	Lower	Upper
248	100		
250	94.8	74.4	111.6
141	70.7	70.4	105.6





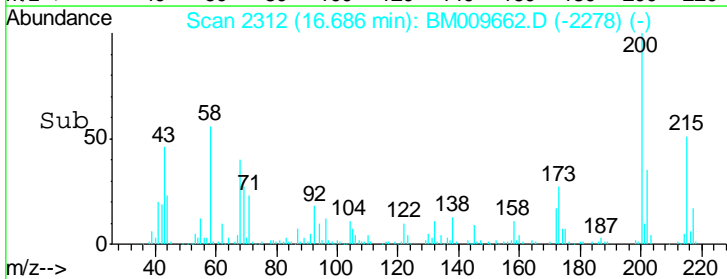
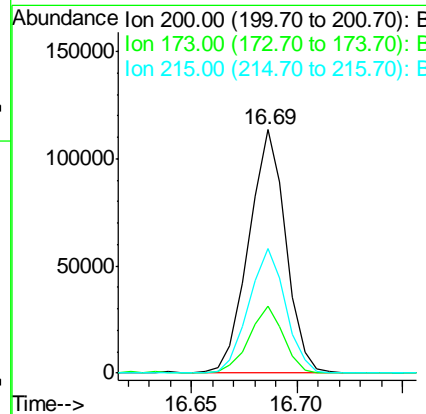
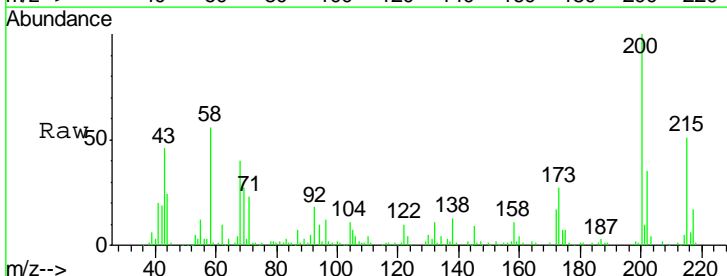
#66  
 Hexachlorobenzene  
 Concen: 19.08 ng/ul  
 RT: 16.53 min Scan# 2285  
 Delta R.T. -0.00 min  
 Lab File: BM009662.D  
 Acq: 18 Apr 2017 19:25

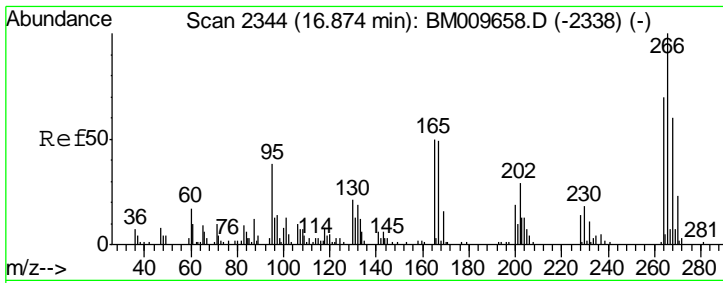
Tgt Ion	Resp	Lower	Upper
284	148391		
142	39.7	31.6	47.4
249	35.5	29.0	43.6



#67  
 Atrazine  
 Concen: 18.88 ng/ul  
 RT: 16.69 min Scan# 2312  
 Delta R.T. -0.00 min  
 Lab File: BM009662.D  
 Acq: 18 Apr 2017 19:25

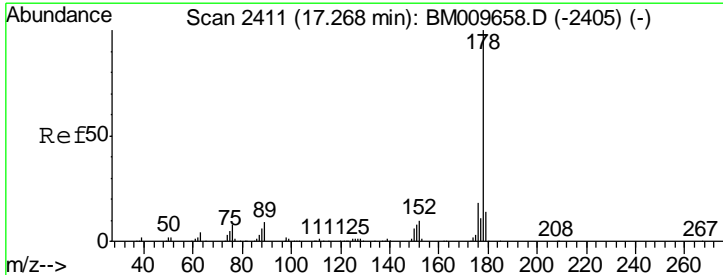
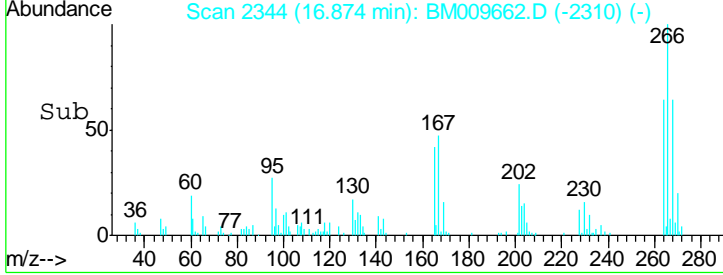
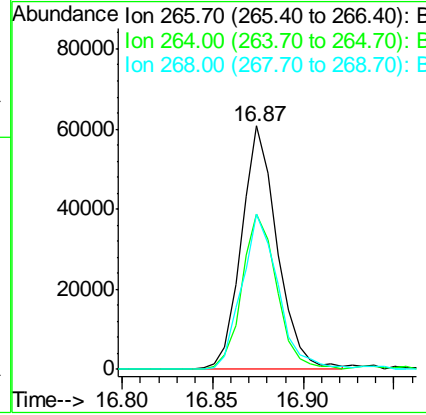
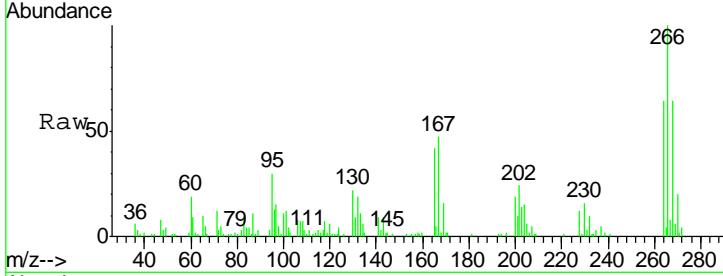
Tgt Ion	Resp	Lower	Upper
200	138095		
173	27.5	21.4	32.0
215	51.2	38.1	57.1





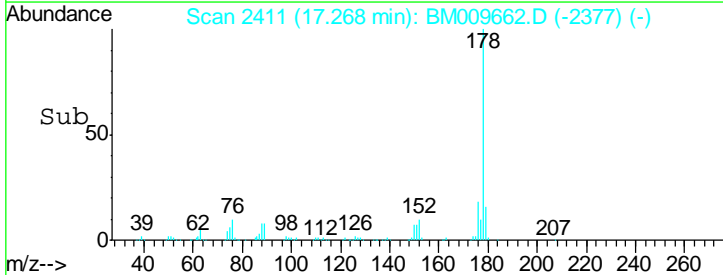
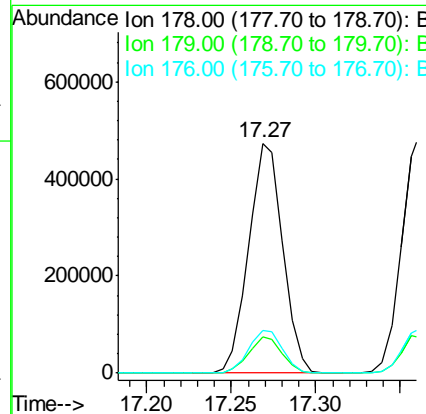
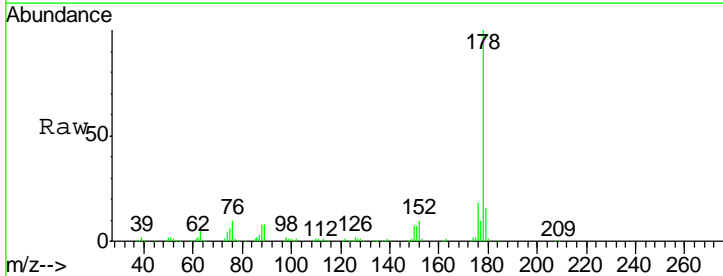
#68  
 Pentachlorophenol  
 Concen: 17.40 ng/ul  
 RT: 16.87 min Scan# 2344  
 Delta R.T. -0.00 min  
 Lab File: BM009662.D  
 Acq: 18 Apr 2017 19:25

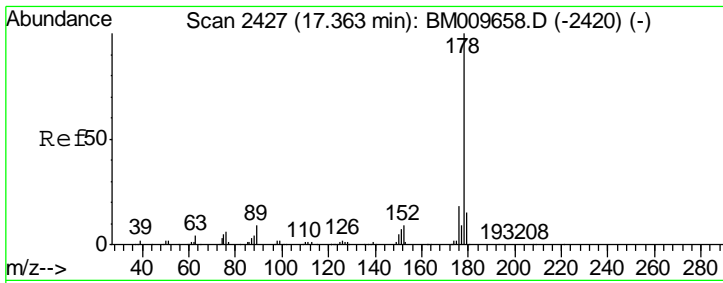
Tgt Ion	Resp	Lower	Upper
266	83409		
264	64.0	54.8	82.2
268	63.7	62.1	93.1



#69  
 Phenanthrene  
 Concen: 19.29 ng/ul  
 RT: 17.27 min Scan# 2411  
 Delta R.T. -0.00 min  
 Lab File: BM009662.D  
 Acq: 18 Apr 2017 19:25

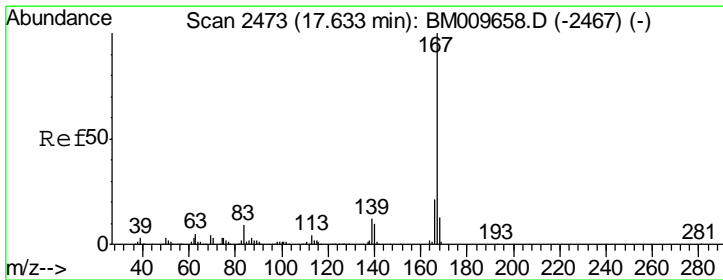
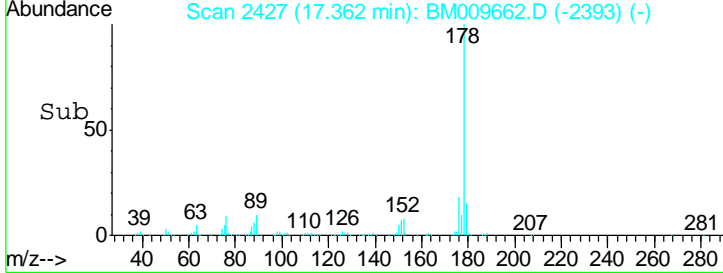
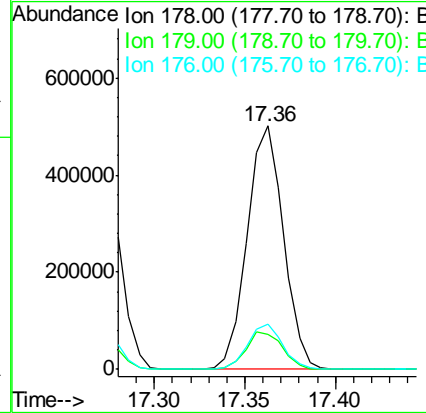
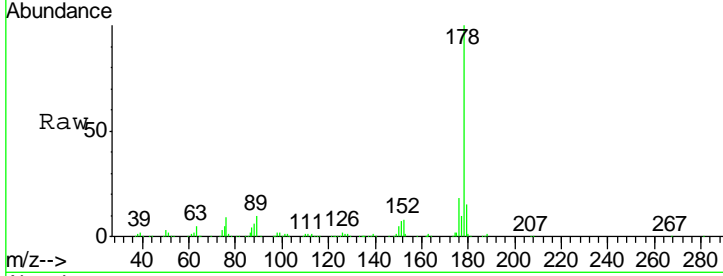
Tgt Ion	Resp	Lower	Upper
178	667292		
179	15.5	12.6	19.0
176	18.5	15.8	23.6





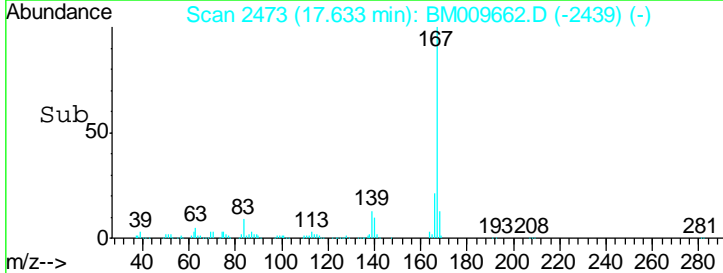
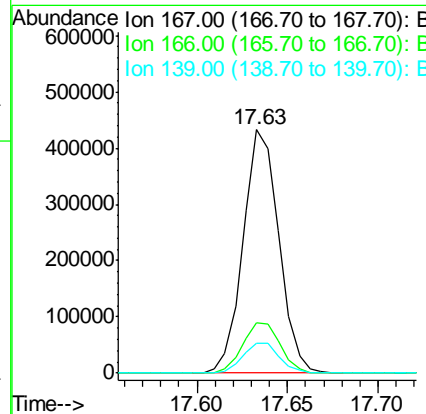
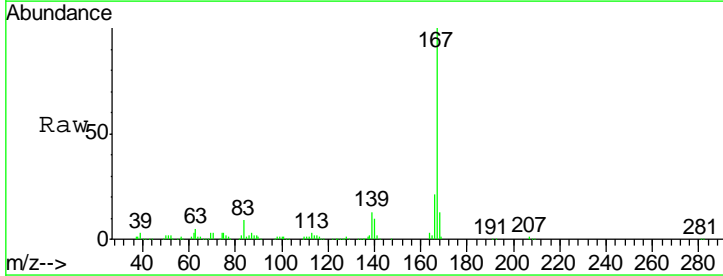
#71  
 Anthracene  
 Concen: 19.43 ng/ul  
 RT: 17.36 min Scan# 2427  
 Delta R.T. -0.00 min  
 Lab File: BM009662.D  
 Acq: 18 Apr 2017 19:25

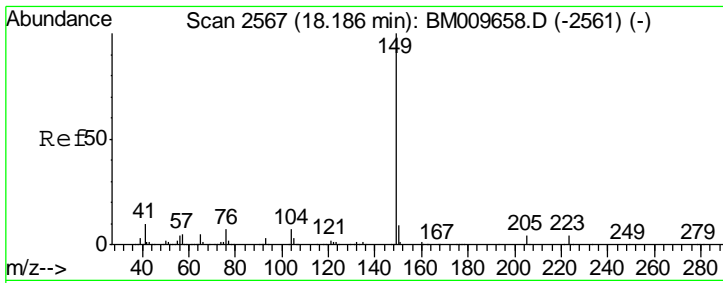
Tgt Ion	Resp	Lower	Upper
178	699429		
179	14.6	13.1	19.7
176	18.4	15.6	23.4



#72  
 Carbazole  
 Concen: 18.74 ng/ul  
 RT: 17.63 min Scan# 2473  
 Delta R.T. -0.00 min  
 Lab File: BM009662.D  
 Acq: 18 Apr 2017 19:25

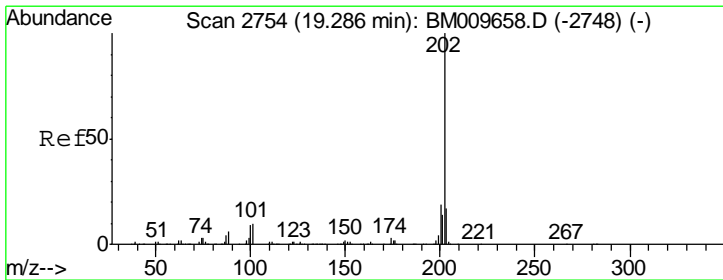
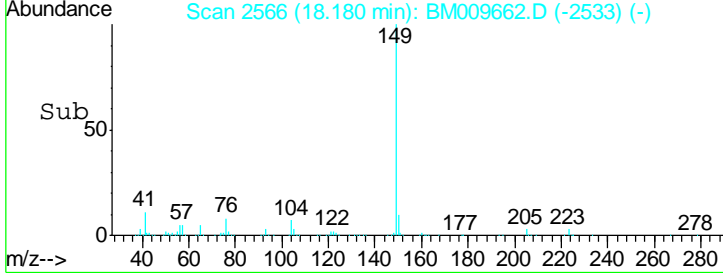
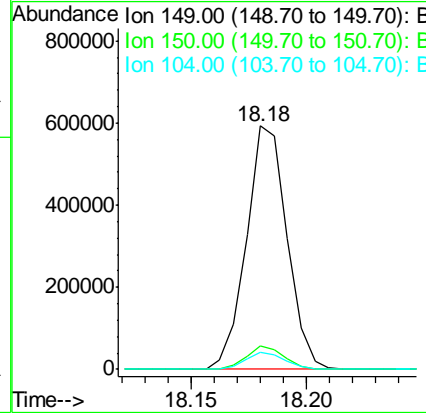
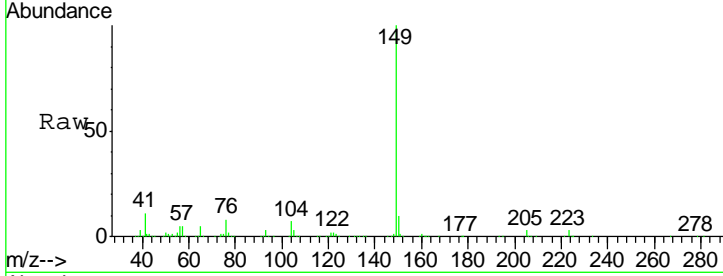
Tgt Ion	Resp	Lower	Upper
167	592767		
166	20.9	17.7	26.5
139	12.5	11.1	16.7





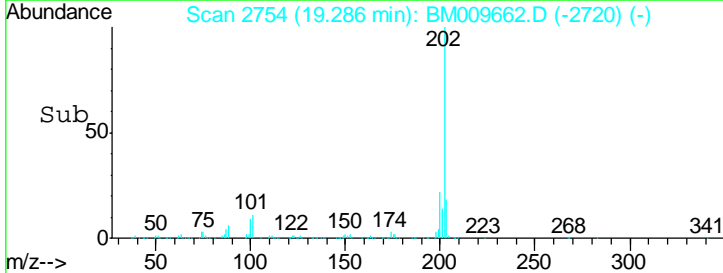
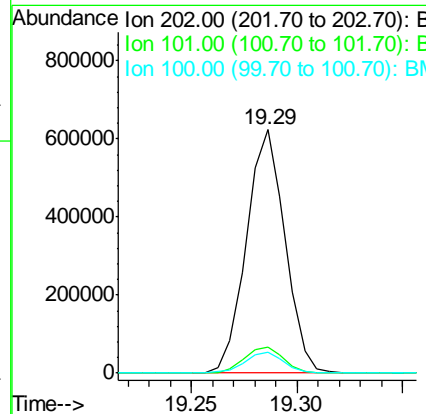
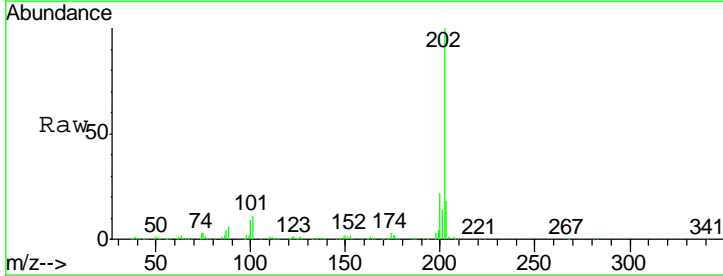
#73  
 Di-n-butylphthalate  
 Concen: 19.08 ng/ul  
 RT: 18.18 min Scan# 2566  
 Delta R.T. -0.01 min  
 Lab File: BM009662.D  
 Acq: 18 Apr 2017 19:25

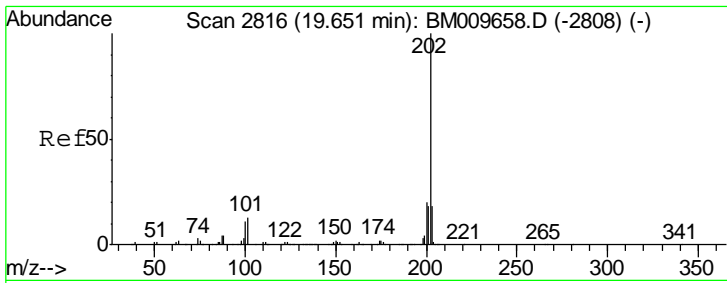
Tgt Ion	Resp	Lower	Upper
149	100		
150	9.8	7.1	10.7
104	6.9	6.9	10.3



#74  
 Fluoranthene  
 Concen: 18.41 ng/ul  
 RT: 19.29 min Scan# 2754  
 Delta R.T. -0.00 min  
 Lab File: BM009662.D  
 Acq: 18 Apr 2017 19:25

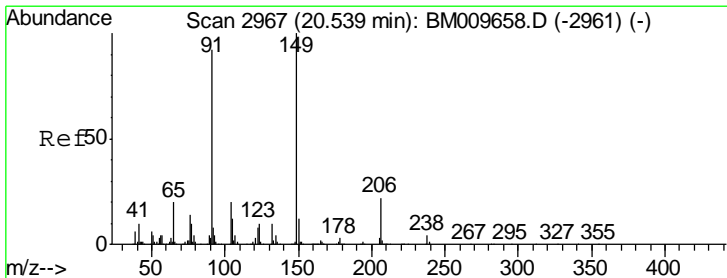
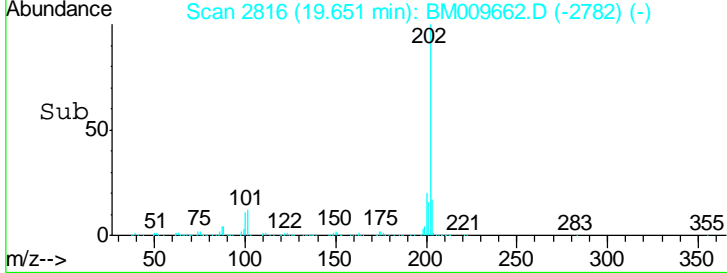
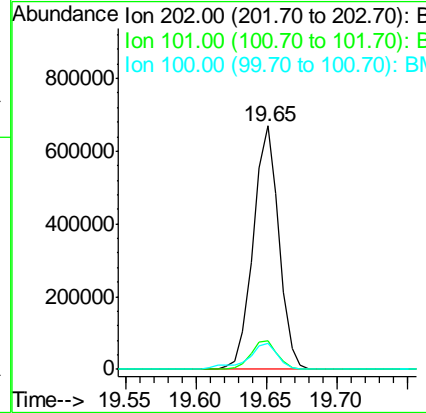
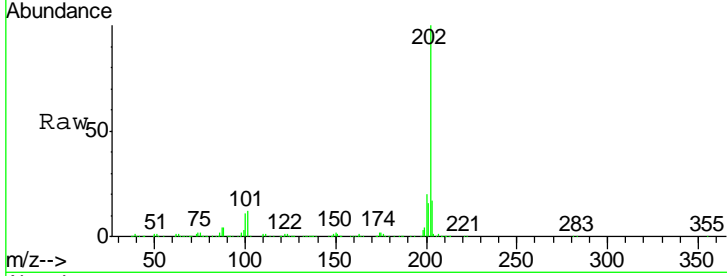
Tgt Ion	Resp	Lower	Upper
202	100		
101	10.6	5.7	8.5#
100	8.5	4.6	7.0#





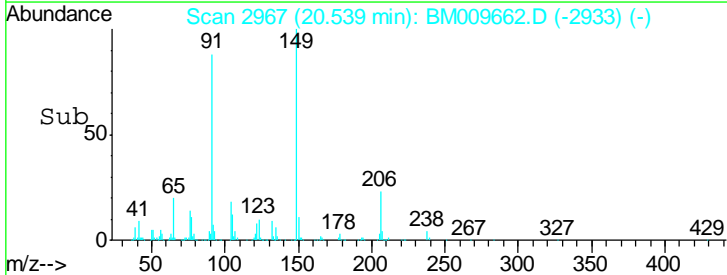
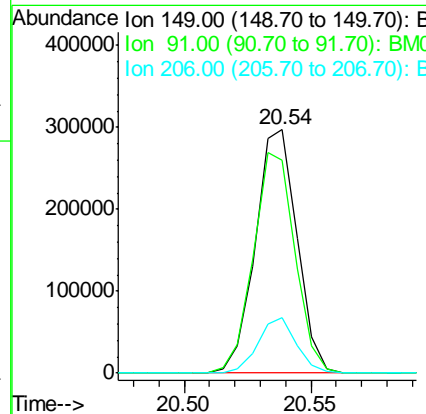
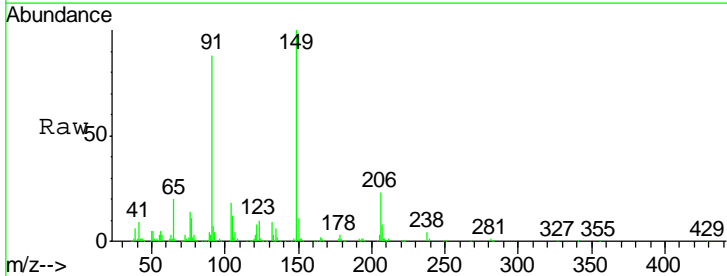
#77  
 Pyrene  
 Concen: 19.03 ng/ul  
 RT: 19.65 min Scan# 2816  
 Delta R.T. -0.00 min  
 Lab File: BM009662.D  
 Acq: 18 Apr 2017 19:25

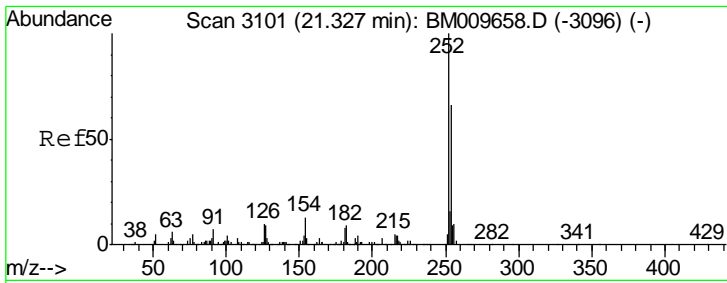
Tgt Ion	Resp	Lower	Upper
202	854606		
101	11.8	6.2	9.4#
100	10.7	6.4	9.6#



#78  
 Butylbenzylphthalate  
 Concen: 18.35 ng/ul  
 RT: 20.54 min Scan# 2967  
 Delta R.T. -0.00 min  
 Lab File: BM009662.D  
 Acq: 18 Apr 2017 19:25

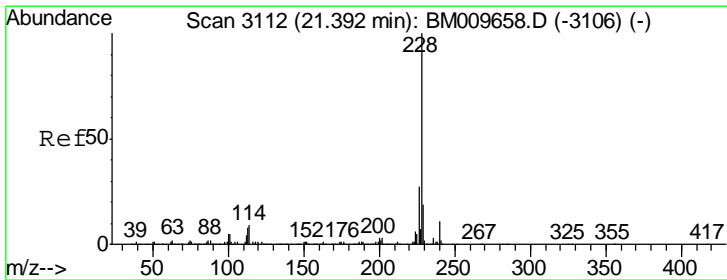
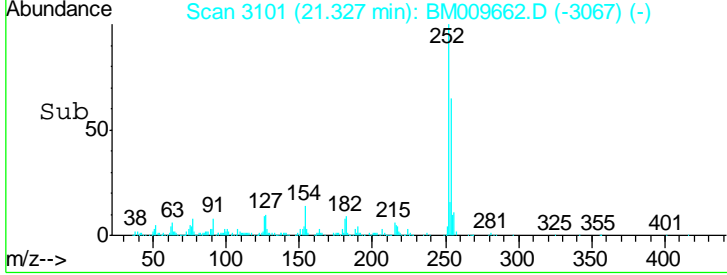
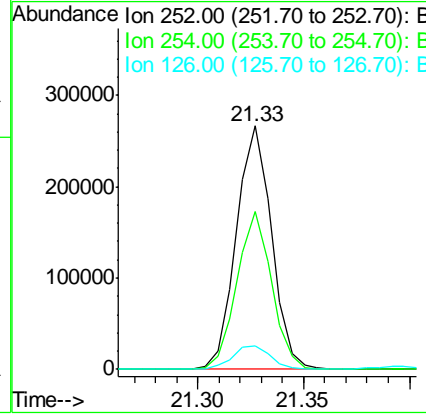
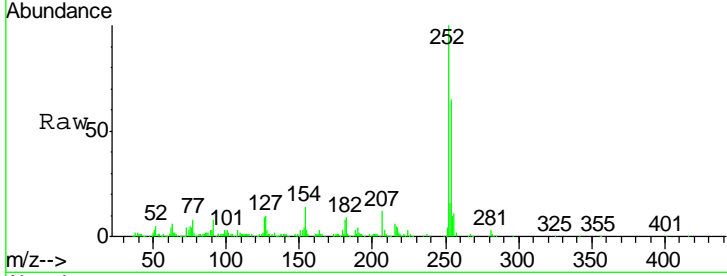
Tgt Ion	Resp	Lower	Upper
149	340214		
91	87.6	80.0	120.0
206	22.7	19.1	28.7





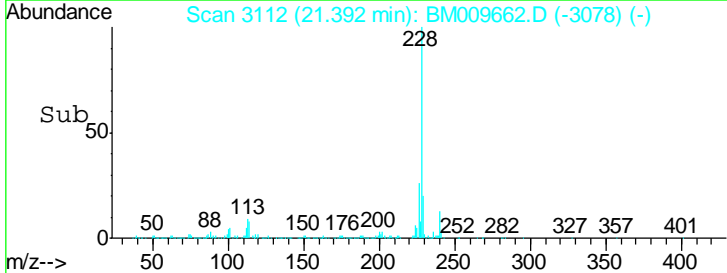
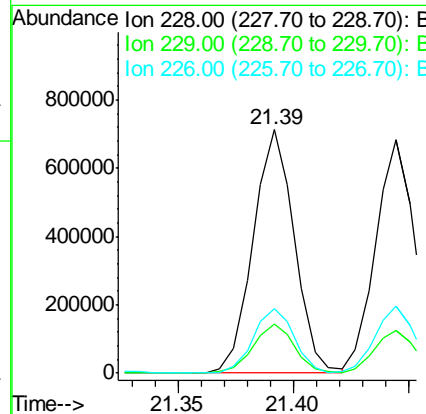
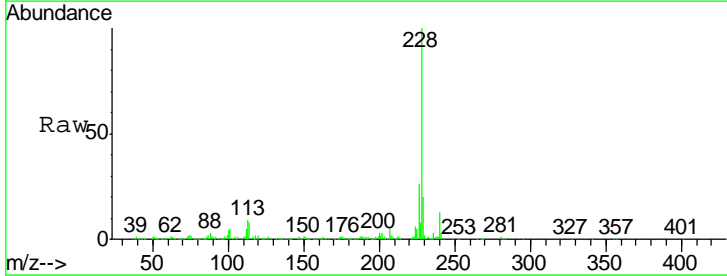
#79  
 3,3'-Dichlorobenzidine  
 Concen: 19.16 ng/ul  
 RT: 21.33 min Scan# 3101  
 Delta R.T. -0.00 min  
 Lab File: BM009662.D  
 Acq: 18 Apr 2017 19:25

Tgt Ion	Resp	Lower	Upper
252	307785		
254	64.6	51.9	77.9
126	9.4	8.2	12.4

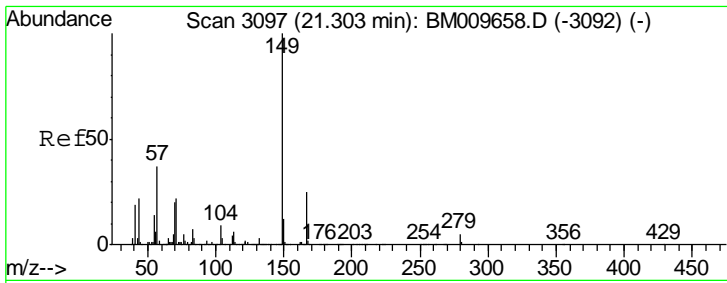


#80  
 Benzo(a)anthracene  
 Concen: 19.15 ng/ul  
 RT: 21.39 min Scan# 3112  
 Delta R.T. -0.00 min  
 Lab File: BM009662.D  
 Acq: 18 Apr 2017 19:25

Tgt Ion	Resp	Lower	Upper
228	886338		
229	20.2	15.4	23.2
226	26.2	21.2	31.8

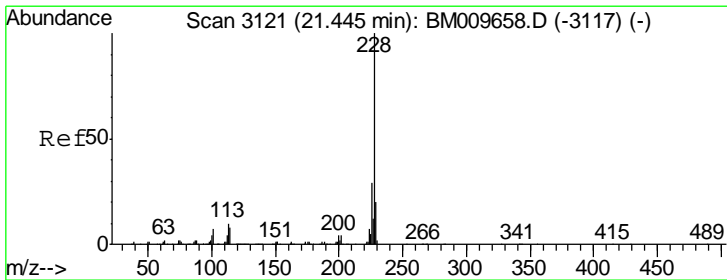
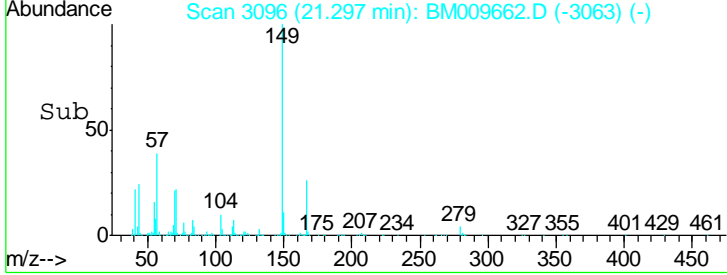
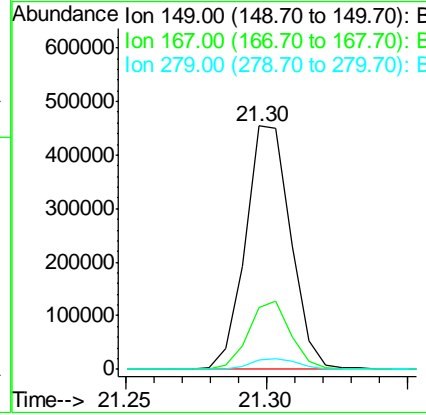
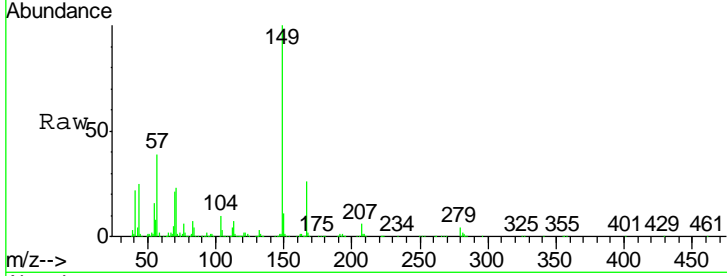






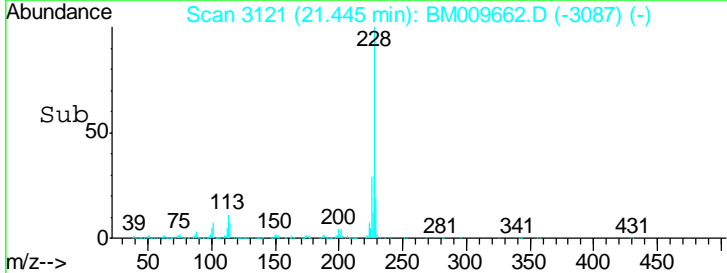
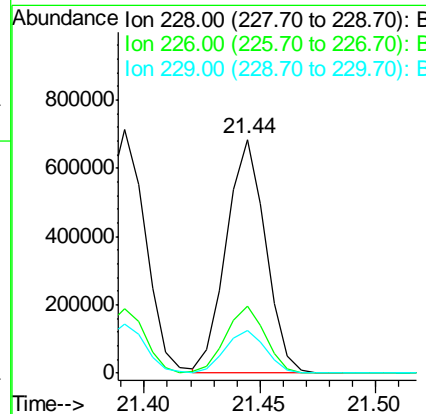
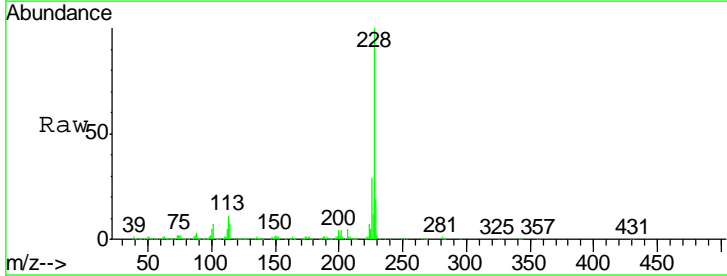
#81  
 Bis(2-ethylhexyl)phthalate  
 Concen: 18.36 ng/ul  
 RT: 21.30 min Scan# 3096  
 Delta R.T. -0.01 min  
 Lab File: BM009662.D  
 Acq: 18 Apr 2017 19:25

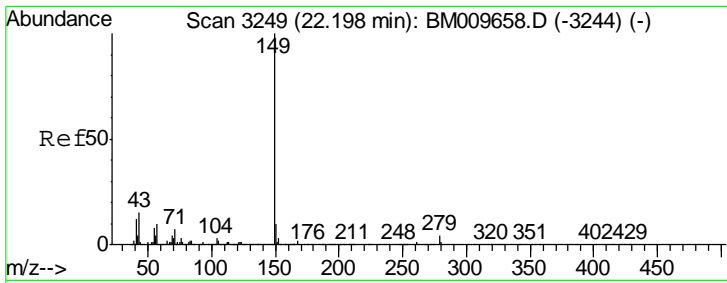
Tgt Ion	Resp	Lower	Upper
149	503444		
167	25.7	20.2	30.2
279	4.1	4.0	6.0



#82  
 Chrysene  
 Concen: 19.32 ng/ul  
 RT: 21.44 min Scan# 3121  
 Delta R.T. -0.00 min  
 Lab File: BM009662.D  
 Acq: 18 Apr 2017 19:25

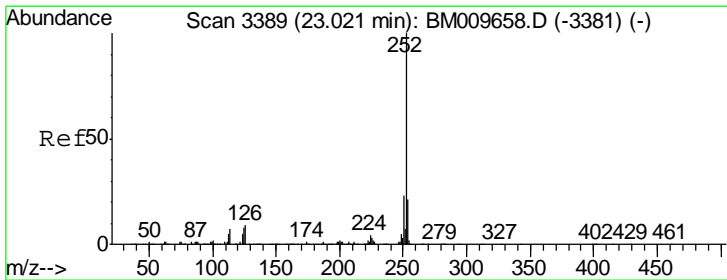
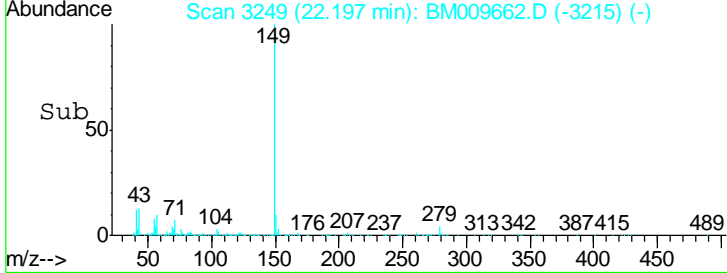
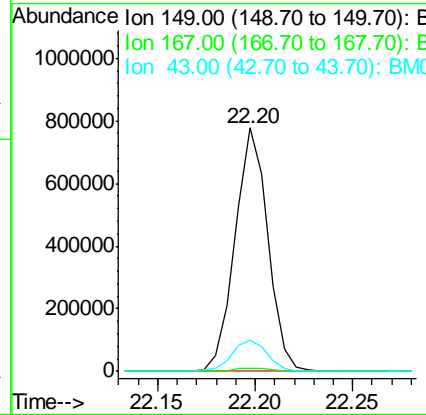
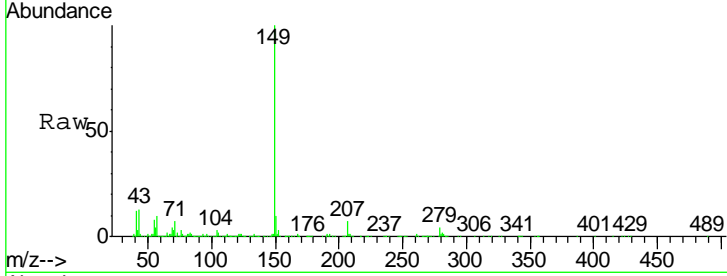
Tgt Ion	Resp	Lower	Upper
228	805786		
226	28.8	23.9	35.9
229	18.5	15.4	23.2





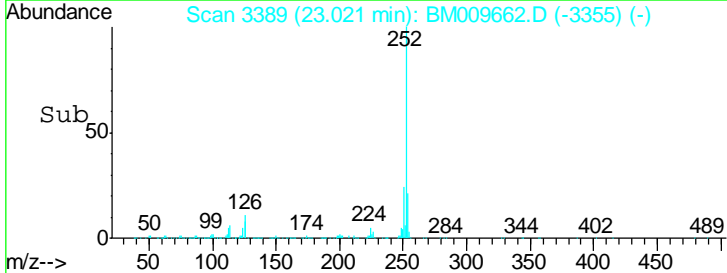
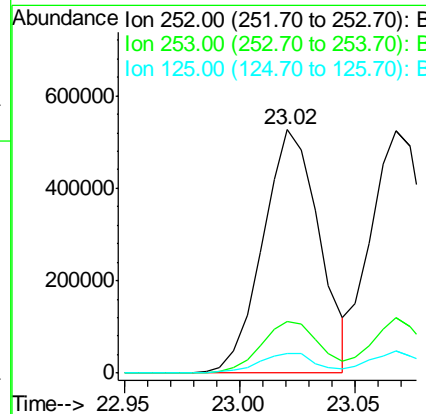
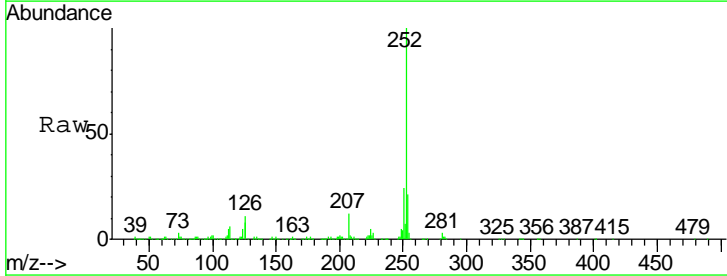
#84  
 Di-n-octyl phthalate  
 Concen: 17.86 ng/ul  
 RT: 22.20 min Scan# 3249  
 Delta R.T. -0.00 min  
 Lab File: BM009662.D  
 Acq: 18 Apr 2017 19:25

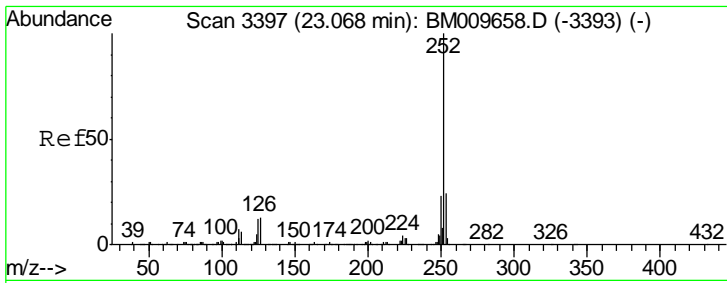
Tgt Ion	Resp	Lower	Upper
149	901265		
167	1.4	1.4	2.0
43	12.9	13.7	20.5#



#85  
 Benzo(b)fluoranthene  
 Concen: 19.13 ng/ul  
 RT: 23.02 min Scan# 3389  
 Delta R.T. -0.00 min  
 Lab File: BM009662.D  
 Acq: 18 Apr 2017 19:25

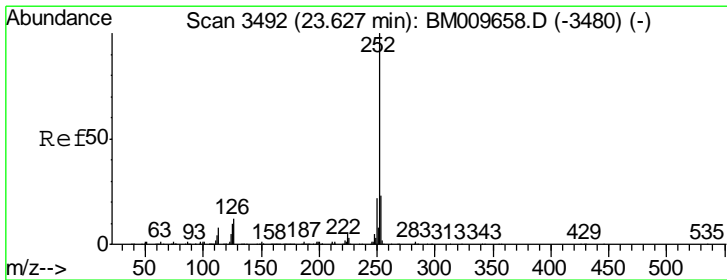
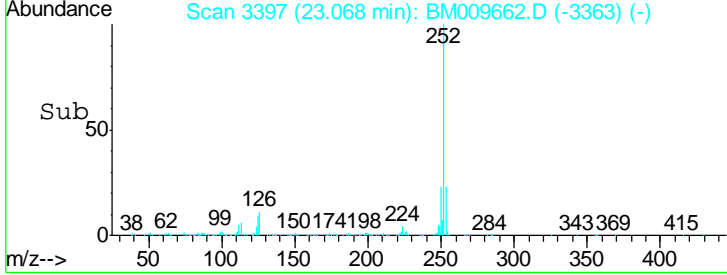
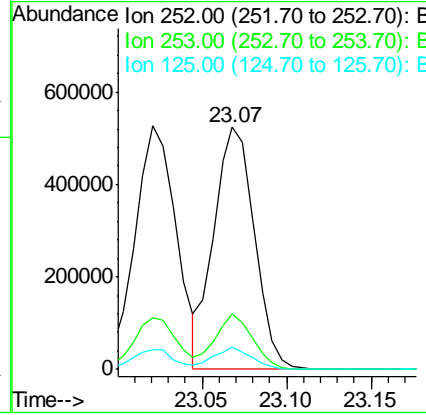
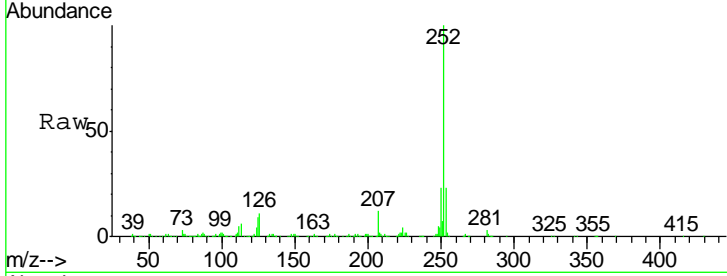
Tgt Ion	Resp	Lower	Upper
252	893012		
253	21.3	17.0	25.4
125	7.9	3.7	5.5#





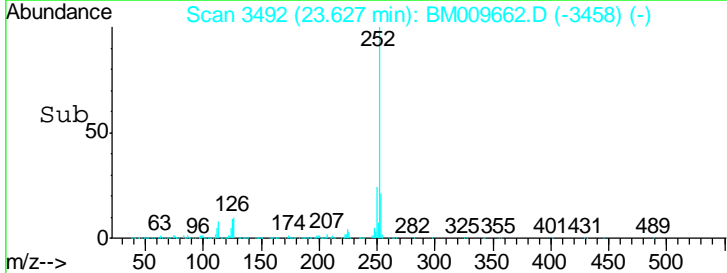
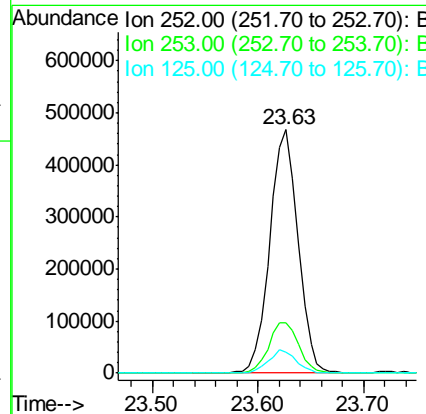
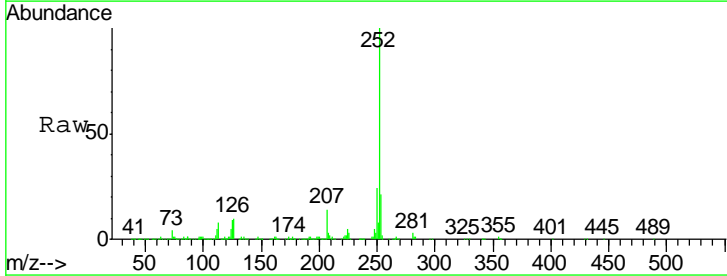
#86  
 Benzo(k)fluoranthene  
 Concen: 19.58 ng/ul  
 RT: 23.07 min Scan# 3397  
 Delta R.T. -0.00 min  
 Lab File: BM009662.D  
 Acq: 18 Apr 2017 19:25

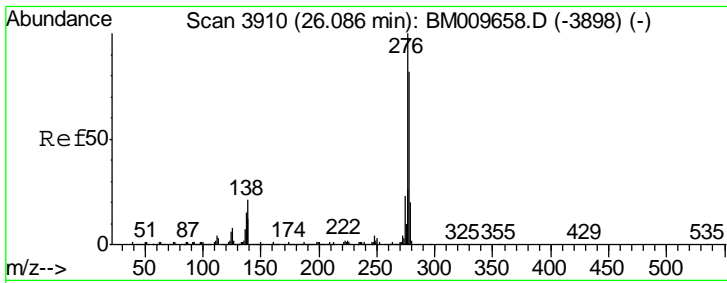
Tgt Ion	Resp	Lower	Upper
252	100		
253	22.9	17.4	26.0
125	9.0	3.8	5.8#



#88  
 Benzo(a)pyrene  
 Concen: 19.19 ng/ul  
 RT: 23.63 min Scan# 3492  
 Delta R.T. -0.00 min  
 Lab File: BM009662.D  
 Acq: 18 Apr 2017 19:25

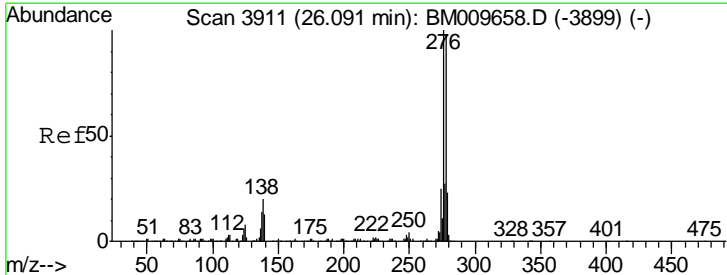
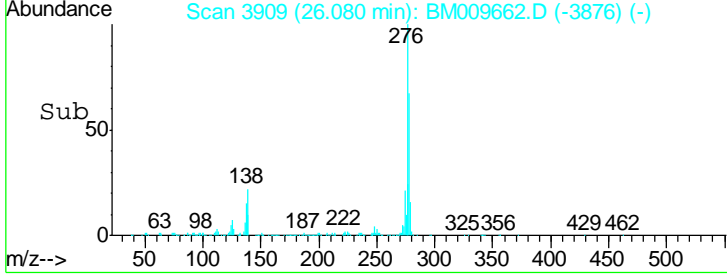
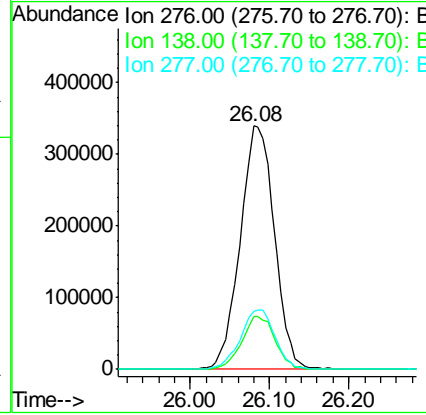
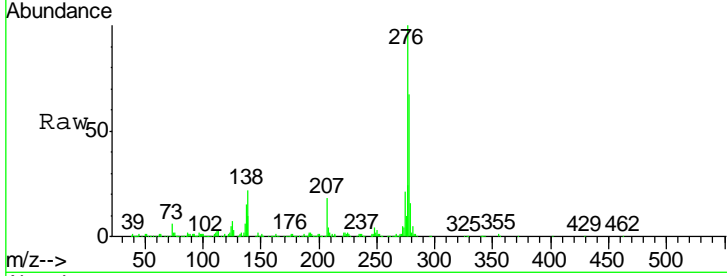
Tgt Ion	Resp	Lower	Upper
252	100		
253	20.7	17.4	26.0
125	8.6	3.7	5.5#





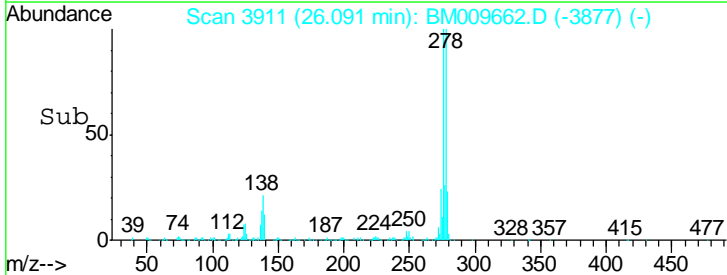
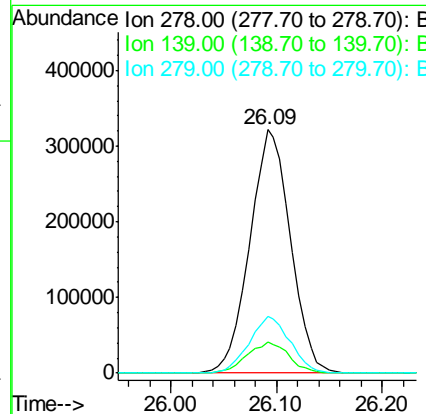
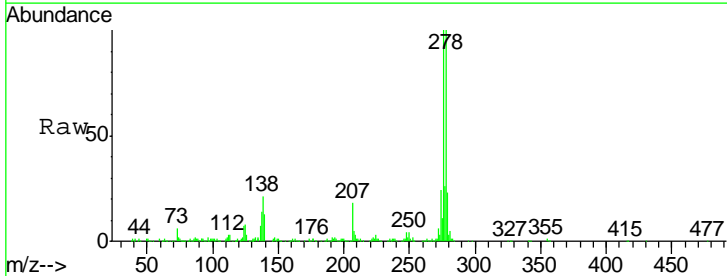
#89  
 Indeno(1,2,3-cd)pyrene  
 Concen: 19.39 ng/ul  
 RT: 26.08 min Scan# 3909  
 Delta R.T. -0.01 min  
 Lab File: BM009662.D  
 Acq: 18 Apr 2017 19:25

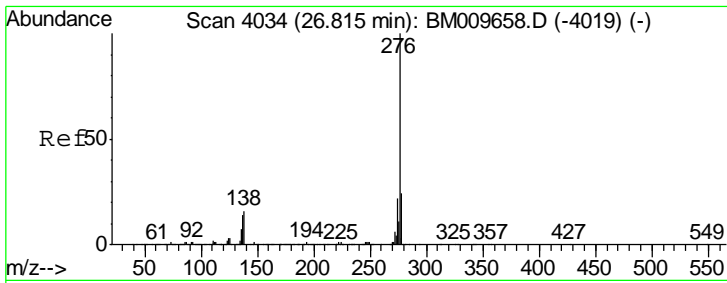
Tgt Ion	Resp	Lower	Upper
276	1019129		
138	21.5	8.2	12.2#
277	23.9	21.5	32.3



#90  
 Dibenzo(a,h)anthracene  
 Concen: 19.35 ng/ul  
 RT: 26.09 min Scan# 3911  
 Delta R.T. -0.00 min  
 Lab File: BM009662.D  
 Acq: 18 Apr 2017 19:25

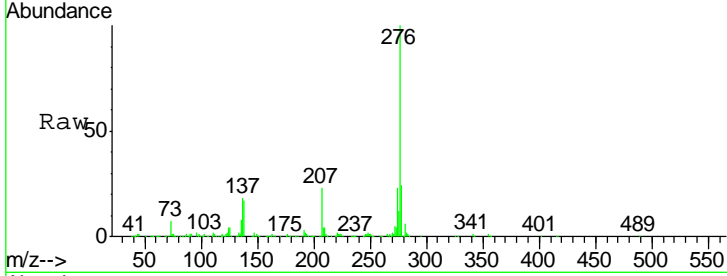
Tgt Ion	Resp	Lower	Upper
278	860011		
139	12.7	5.8	8.8#
279	23.3	17.9	26.9





#91  
 Benzo(a,h,i)perylene  
 Concen: 19.39 ng/ul  
 RT: 26.81 min Scan# 4034  
 Delta R.T. -0.00 min  
 Lab File: BM009662.D  
 Acq: 18 Apr 2017 19:25

Tot Ion	Ratio	Lower	Upper
276	100		
138	17.2	7.0	10.4#
277	24.1	19.0	28.6



Abundance Ion 276.00 (275.70 to 276.70): E  
 Ion 138.00 (137.70 to 138.70): E  
 Ion 277.00 (276.70 to 277.70): E

