

Data Path : Z:\svoasrv\HPCHEM1\BNA_M\Data\BM041921\
 Data File : BM029540.D
 Acq On : 19 Apr 2021 14:51
 Operator : CG/JU
 Sample : M2074-01
 Misc :
 ALS Vial : 7 Sample Multiplier: 1

Instrument :
 BNA_M
 ClientSampleId :
 VNP2-B-1

Manual Integrations
 APPROVED

mohammad
 4/21/2021 8:35:19 AM

Quant Time: Apr 19 15:25:20 2021
 Quant Method : Z:\svoasrv\HPCHEM1\BNA_M\Methods\8270-BM040121.M
 Quant Title : ASP BNA STANDARDS FOR 5 POINT CALIBRATION
 QLast Update : Fri Apr 16 11:56:50 2021
 Response via : Initial Calibration

Compound	R.T.	QIon	Response	Conc	Units	Dev(Min)	
Internal Standards							
1) 1,4-Dichlorobenzene-d4	7.669	152	99426	20.00	ng	0.00	
21) Naphthalene-d8	10.445	136	397675	20.00	ng	-0.01	
39) Acenaphthene-d10	14.304	164	216738	20.00	ng	-0.01	
64) Phenanthrene-d10	17.051	188	354873	20.00	ng	0.00	
76) Chrysene-d12	21.227	240	290995	20.00	ng	0.00	#
86) Perylene-d12	23.433	264	325910	20.00	ng	0.00	
System Monitoring Compounds							
5) 2-Fluorophenol	5.269	112	531959	88.34	ng	0.00	
7) Phenol-d6	6.845	99	712774	83.84	ng	0.00	
23) Nitrobenzene-d5	8.822	82	542395	62.53	ng	0.00	
42) 2,4,6-Tribromophenol	15.798	330	146897	67.81	ng	0.00	
45) 2-Fluorobiphenyl	12.927	172	732986	47.12	ng	0.00	
79) Terphenyl-d14	19.680	244	542882	35.43	ng	0.00	
Target Compounds							
71) Phenanthrene	17.092	178	87005	4.24	ng		Qvalue 98
75) Fluoranthene	19.103	202	166318	7.27	ng		97
78) Pyrene	19.468	202	150283	7.43	ng		99
81) Benzo(a)anthracene	21.215	228	84688	4.36	ng		96
83) Chrysene	21.262	228	92074m	4.84	ng		
84) Bis(2-ethylhexyl)phtha...	21.156	149	32081	2.29	ng		98
88) Benzo(b)fluoranthene	22.774	252	136471m	6.38	ng		
89) Benzo(k)fluoranthene	22.809	252	44220m	2.16	ng		
90) Benzo(a)pyrene	23.338	252	90975	4.65	ng	#	94
92) Benzo(g,h,i)perylene	26.321	276	67184	3.38	ng	#	92

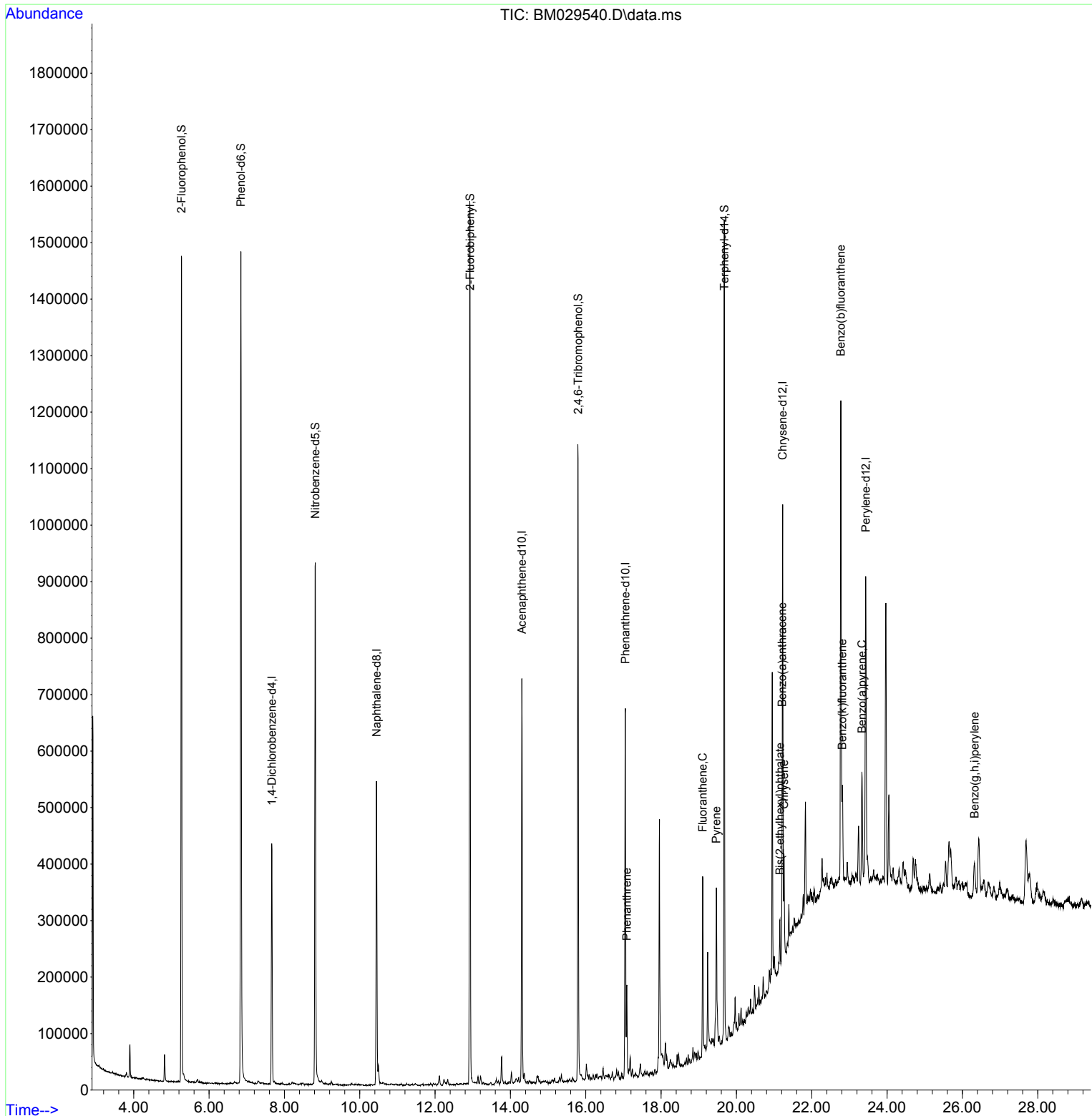
(#) = qualifier out of range (m) = manual integration (+) = signals summed

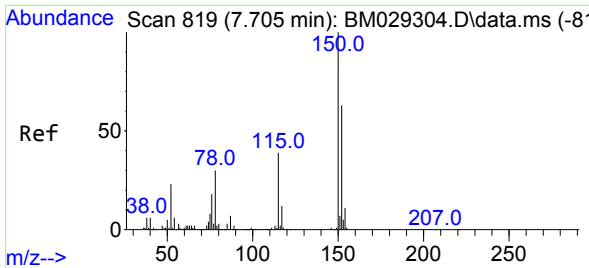
Data Path : Z:\svoasrv\HPCHEM1\BNA_M\Data\BM041921\
 Data File : BM029540.D
 Acq On : 19 Apr 2021 14:51
 Operator : CG/JU
 Sample : M2074-01
 Misc :
 ALS Vial : 7 Sample Multiplier: 1

Instrument :
 BNA_M
 Client Sampled :
 VNPH2-B-1

Manual Integrations
APPROVED
 mohammad
 4/21/2021 8:35:19 AM

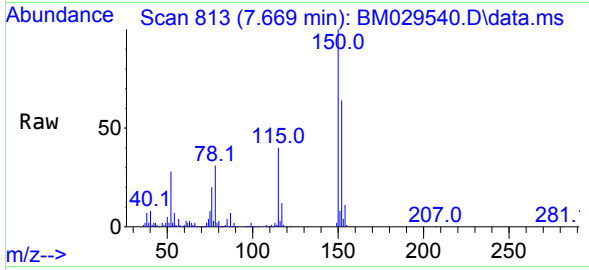
Quant Time: Apr 19 15:25:20 2021
 Quant Method : Z:\svoasrv\HPCHEM1\BNA_M\Methods\8270-BM040121.M
 Quant Title : ASP BNA STANDARDS FOR 5 POINT CALIBRATION
 QLast Update : Fri Apr 16 11:56:50 2021
 Response via : Initial Calibration





#1
 1,4-Dichlorobenzene-d4
 Concen: 20.00 ng
 RT: 7.669 min Scan# 813
 Delta R.T. -0.006 min
 Lab File: BM029540.D
 Acq: 19 Apr 2021 14:51

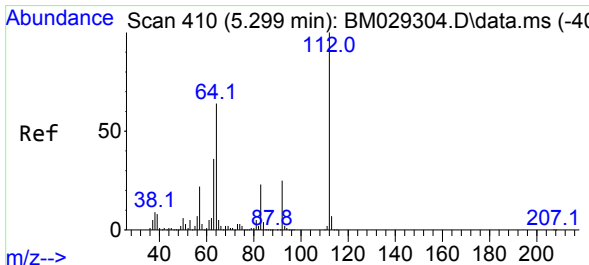
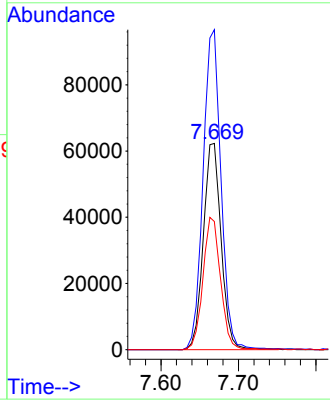
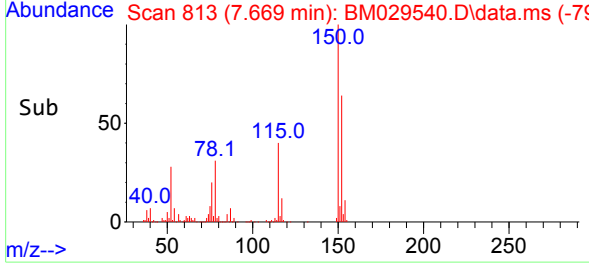
Instrument :
 BNA_M
ClientSampled :
 VNP2-B-1



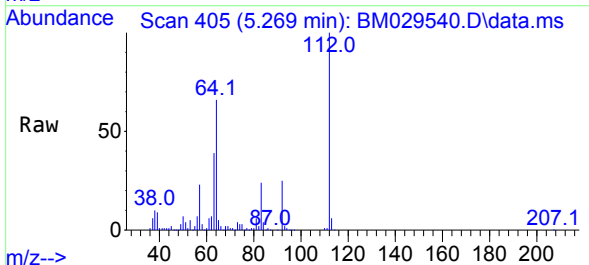
Tgt Ion:152 Resp: 99426

Ion	Ratio	Lower	Upper
152	100		
150	155.2	124.3	186.5
115	62.2	46.4	69.6

Manual Integrations
APPROVED
 mohammad
 4/21/2021 8:35:19 AM

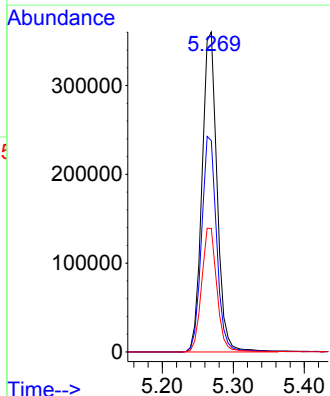
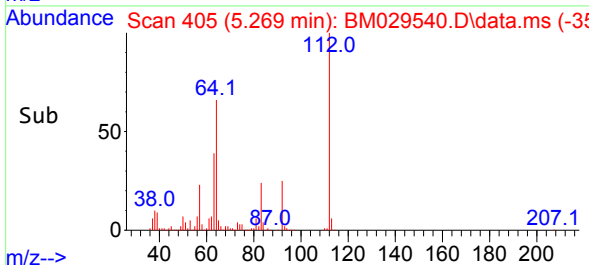


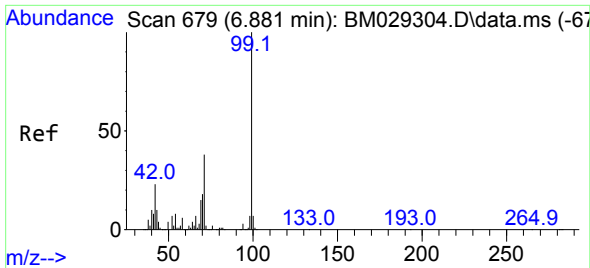
#5
 2-Fluorophenol
 Concen: 88.34 ng
 RT: 5.269 min Scan# 405
 Delta R.T. -0.000 min
 Lab File: BM029540.D
 Acq: 19 Apr 2021 14:51



Tgt Ion:112 Resp: 531959

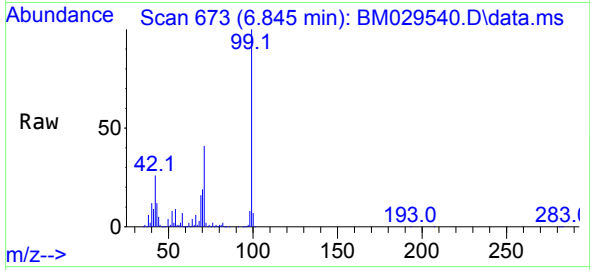
Ion	Ratio	Lower	Upper
112	100		
64	66.1	51.6	77.4
63	38.6	29.0	43.4





#7
Phenol-d6
Concen: 83.84 ng
RT: 6.845 min Scan# 673
Delta R.T. -0.006 min
Lab File: BM029540.D
Acq: 19 Apr 2021 14:51

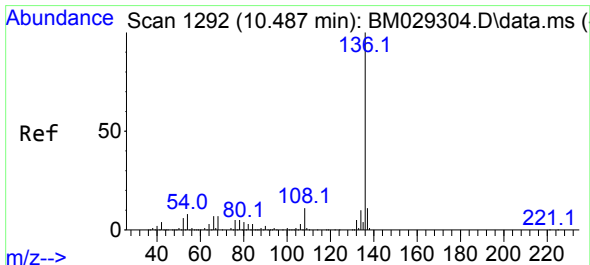
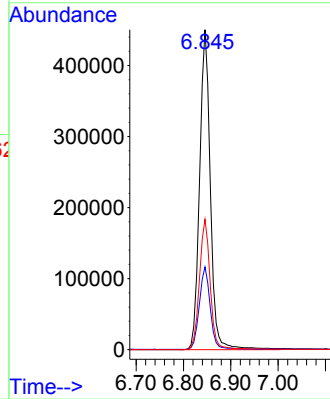
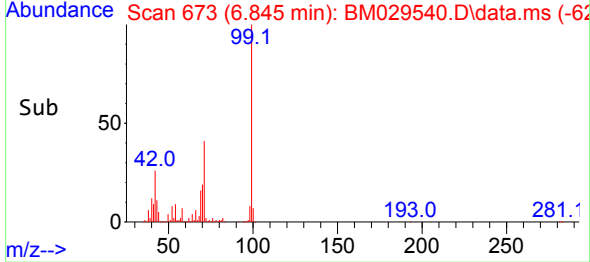
Instrument :
BNA_M
ClientSampled :
VNPH2-B-1



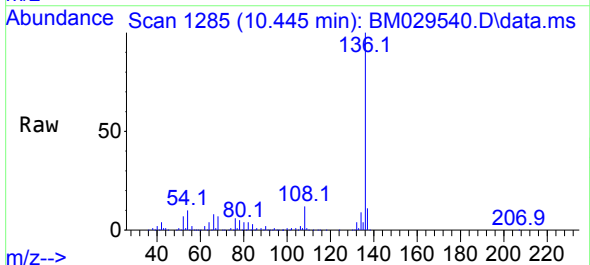
Tgt Ion: 99 Resp: 712774
Ion Ratio Lower Upper
99 100
42 25.9 18.5 27.7
71 40.7 31.8 47.6

Manual Integrations
APPROVED

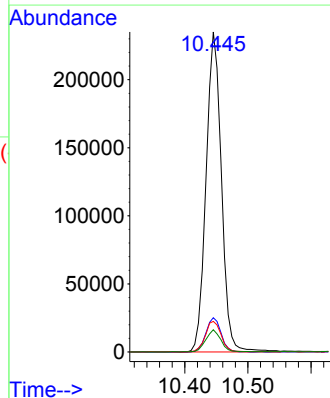
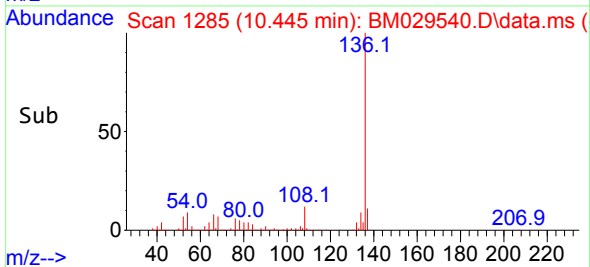
mohammad
4/21/2021 8:35:19 AM

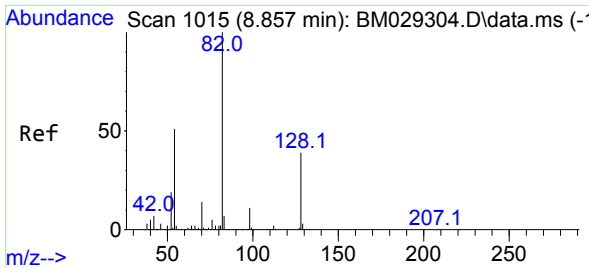


#21
Naphthalene-d8
Concen: 20.00 ng
RT: 10.445 min Scan# 1285
Delta R.T. -0.012 min
Lab File: BM029540.D
Acq: 19 Apr 2021 14:51



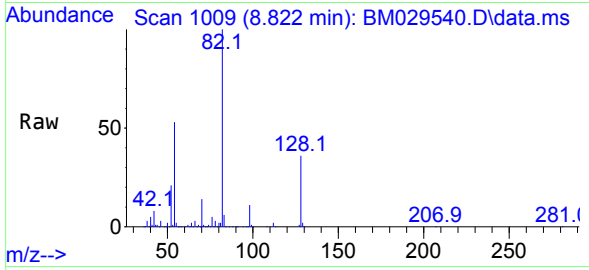
Tgt Ion: 136 Resp: 397675
Ion Ratio Lower Upper
136 100
137 10.7 9.3 13.9
54 9.5 6.9 10.3
68 7.0 5.4 8.0





#23
 Nitrobenzene-d5
 Concen: 62.53 ng
 RT: 8.822 min Scan# 1009
 Delta R.T. -0.006 min
 Lab File: BM029540.D
 Acq: 19 Apr 2021 14:51

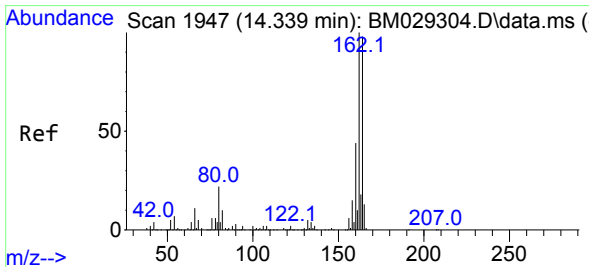
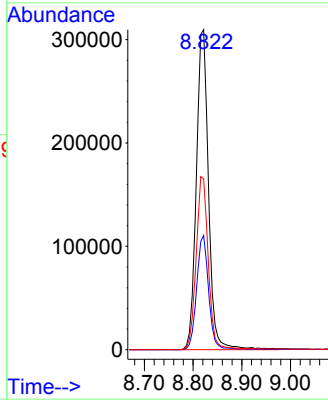
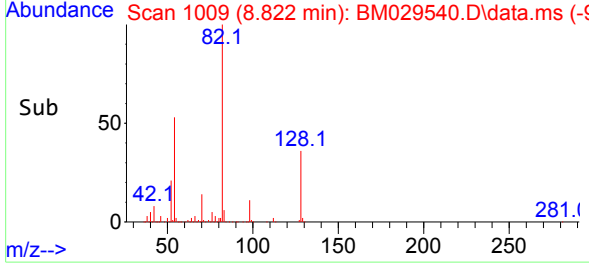
Instrument :
 BNA_M
ClientSampled :
 VNP2-B-1



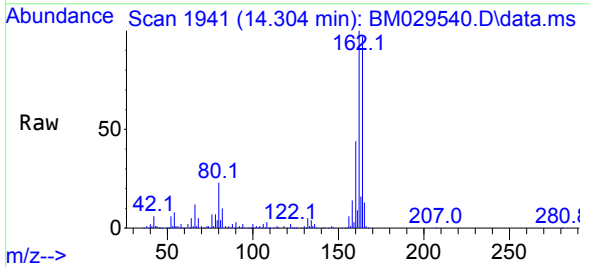
Tgt Ion: 82 Resp: 542395

Ion	Ratio	Lower	Upper
82	100		
128	35.7	28.6	42.8
54	53.4	40.7	61.1

Manual Integrations
APPROVED
 mohammad
 4/21/2021 8:35:19 AM

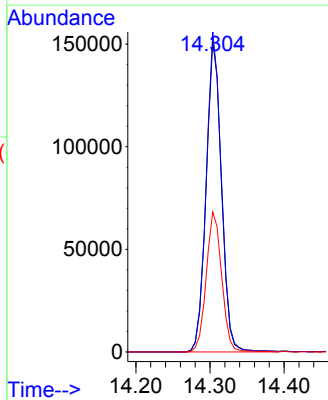
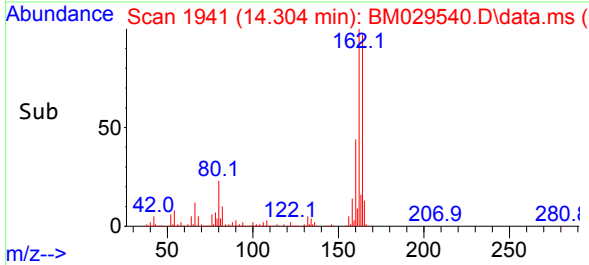


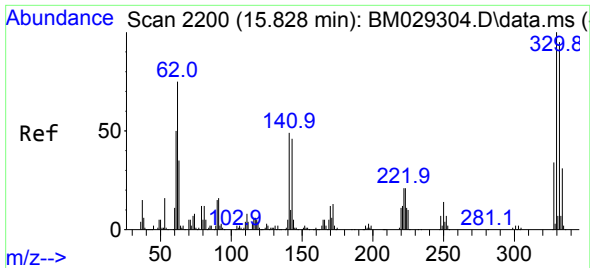
#39
 Acenaphthene-d10
 Concen: 20.00 ng
 RT: 14.304 min Scan# 1941
 Delta R.T. -0.012 min
 Lab File: BM029540.D
 Acq: 19 Apr 2021 14:51



Tgt Ion: 164 Resp: 216738

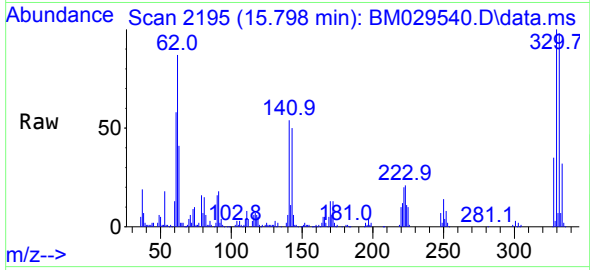
Ion	Ratio	Lower	Upper
164	100		
162	103.0	84.4	126.6
160	45.0	36.6	54.8





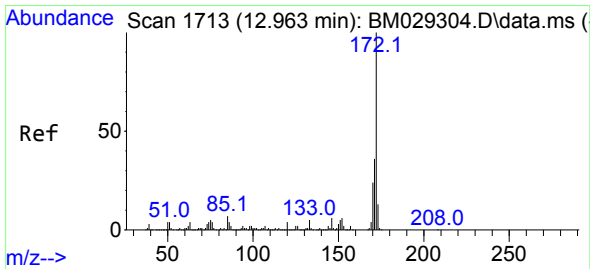
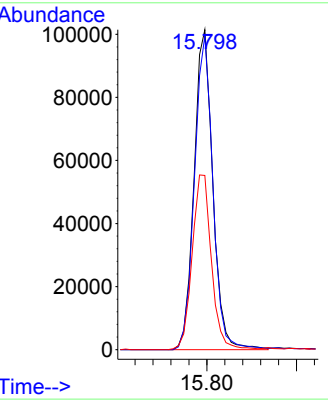
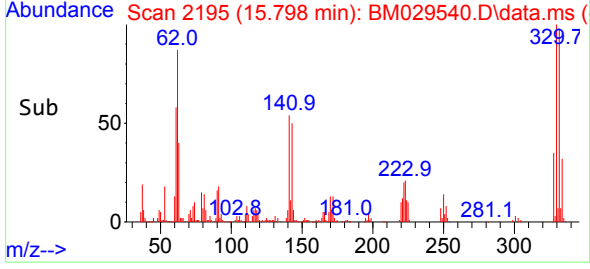
#42
 2,4,6-Tribromophenol
 Concen: 67.81 ng
 RT: 15.798 min Scan# 2195
 Delta R.T. -0.006 min
 Lab File: BM029540.D
 Acq: 19 Apr 2021 14:51

Instrument :
 BNA_M
ClientSampled :
 VNPH2-B-1

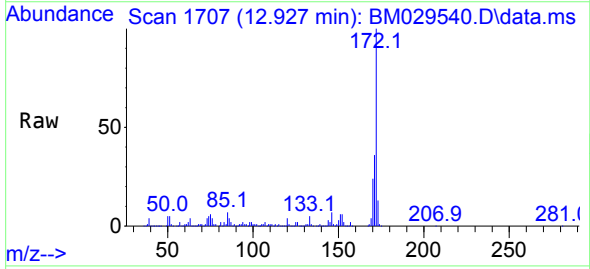


Tgt Ion:330 Resp: 146897
 Ion Ratio Lower Upper
 330 100
 332 97.6 77.1 115.7
 141 56.2 39.2 58.8

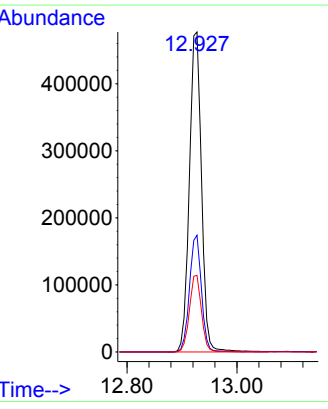
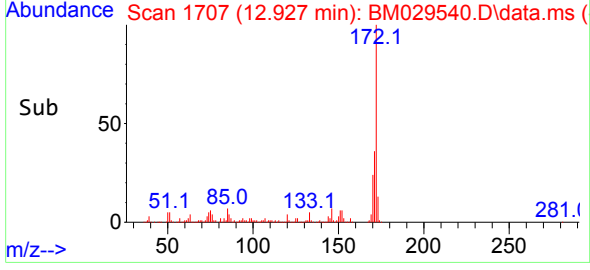
Manual Integrations
APPROVED
 mohammad
 4/21/2021 8:35:19 AM

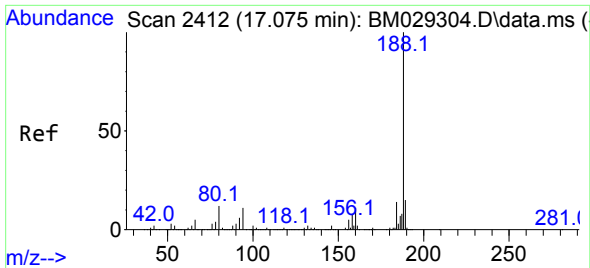


#45
 2-Fluorobiphenyl
 Concen: 47.12 ng
 RT: 12.927 min Scan# 1707
 Delta R.T. -0.006 min
 Lab File: BM029540.D
 Acq: 19 Apr 2021 14:51



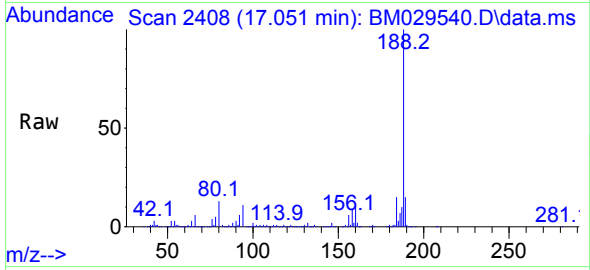
Tgt Ion:172 Resp: 732986
 Ion Ratio Lower Upper
 172 100
 171 36.5 28.7 43.1
 170 24.0 18.8 28.2





#64
 Phenanthrene-d10
 Concen: 20.00 ng
 RT: 17.051 min Scan# 2408
 Delta R.T. -0.006 min
 Lab File: BM029540.D
 Acq: 19 Apr 2021 14:51

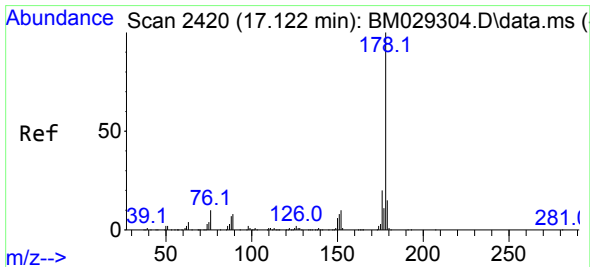
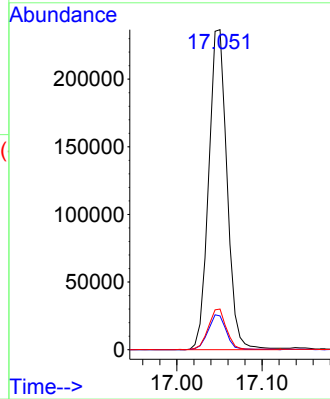
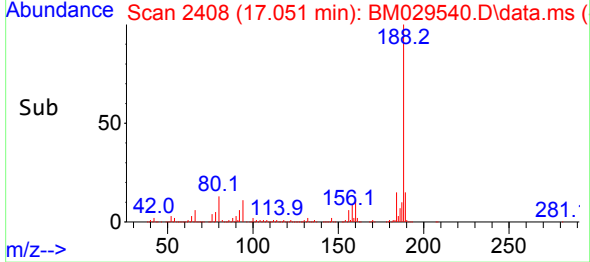
Instrument :
 BNA_M
 ClientSampled :
 VNPH2-B-1



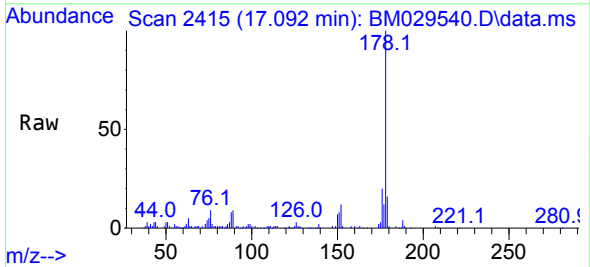
Tgt Ion:188 Resp: 354873
 Ion Ratio Lower Upper
 188 100
 94 10.5 8.1 12.1
 80 12.7 9.2 13.8

Manual Integrations
 APPROVED

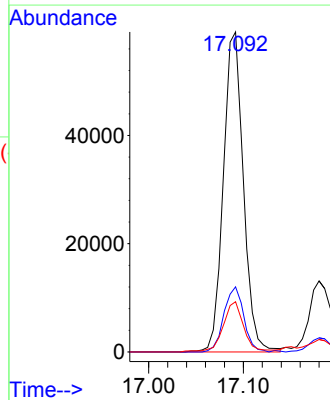
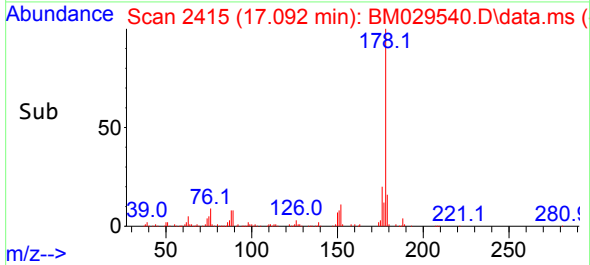
mohammad
 4/21/2021 8:35:19 AM

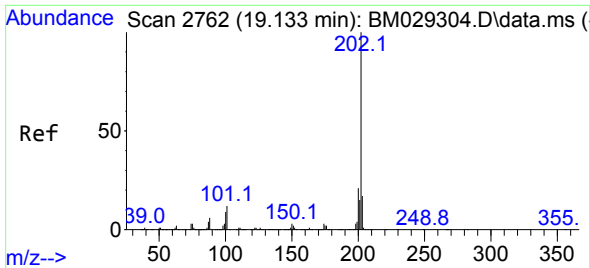


#71
 Phenanthrene
 Concen: 4.24 ng
 RT: 17.092 min Scan# 2415
 Delta R.T. -0.006 min
 Lab File: BM029540.D
 Acq: 19 Apr 2021 14:51



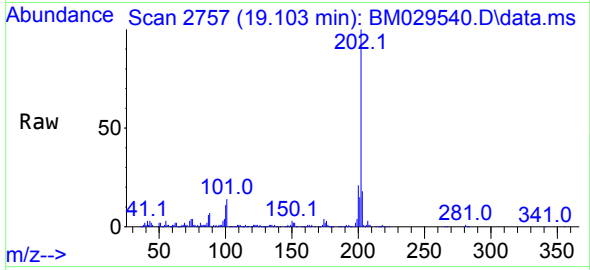
Tgt Ion:178 Resp: 87005
 Ion Ratio Lower Upper
 178 100
 176 20.4 15.7 23.5
 179 15.7 11.9 17.9





#75
 Fluoranthene
 Concen: 7.27 ng
 RT: 19.103 min Scan# 2757
 Delta R.T. -0.012 min
 Lab File: BM029540.D
 Acq: 19 Apr 2021 14:51

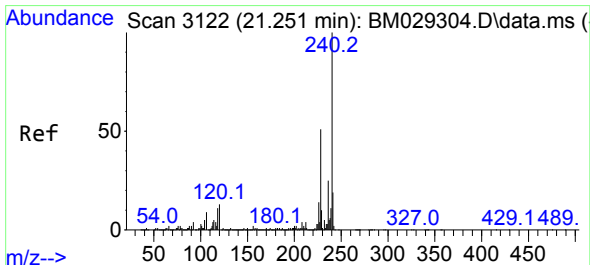
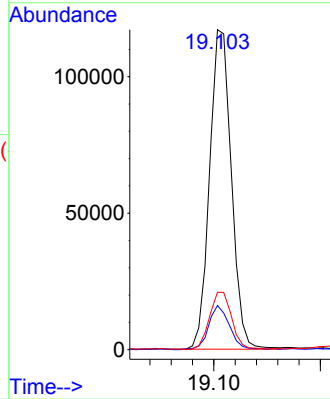
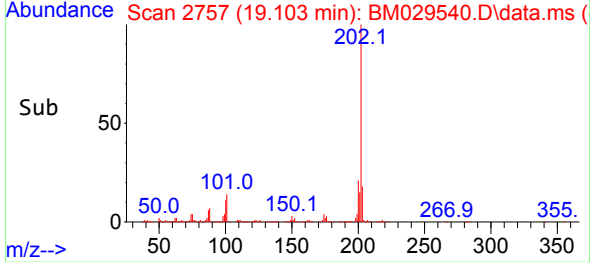
Instrument :
 BNA_M
 ClientSampleId :
 VNP2-B-1



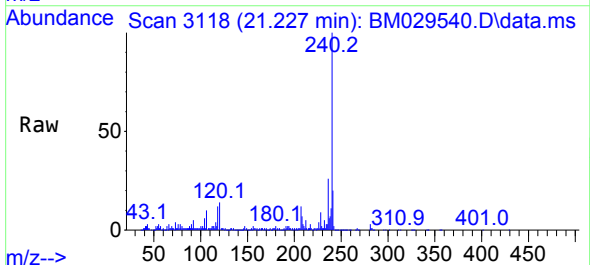
Tgt Ion:202 Resp: 166318
 Ion Ratio Lower Upper
 202 100
 101 13.8 0.0 31.5
 203 17.9 0.0 37.7

Manual Integrations
 APPROVED

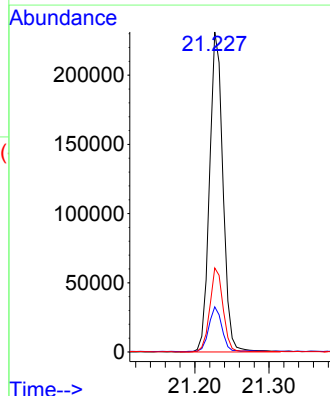
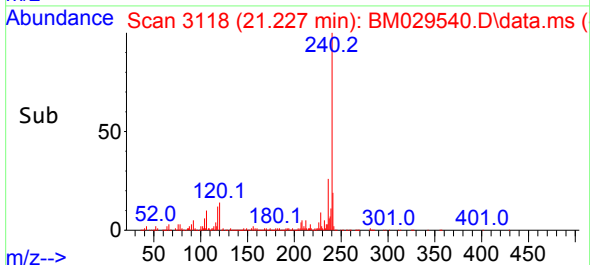
mohammad
 4/21/2021 8:35:19 AM

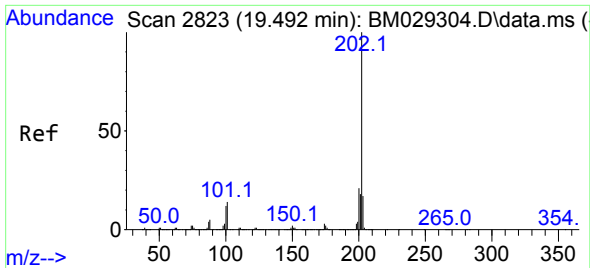


#76
 Chrysene-d12
 Concen: 20.00 ng
 RT: 21.227 min Scan# 3118
 Delta R.T. -0.006 min
 Lab File: BM029540.D
 Acq: 19 Apr 2021 14:51



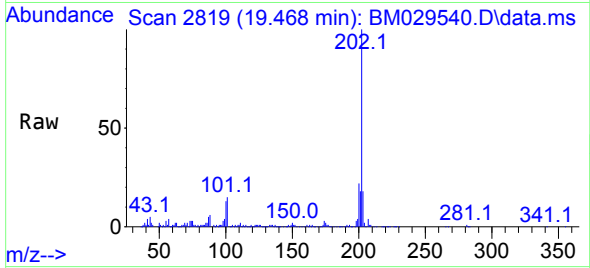
Tgt Ion:240 Resp: 290995
 Ion Ratio Lower Upper
 240 100
 120 14.1 9.0 13.6#
 236 26.3 20.3 30.5





#78
 Pyrene
 Concen: 7.43 ng
 RT: 19.468 min Scan# 2819
 Delta R.T. -0.006 min
 Lab File: BM029540.D
 Acq: 19 Apr 2021 14:51

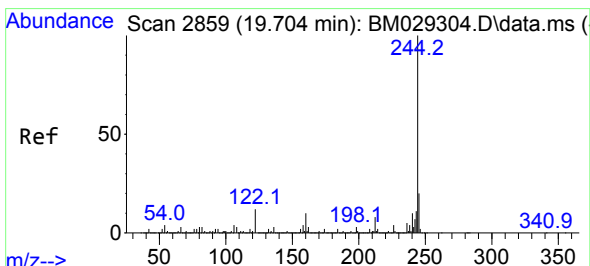
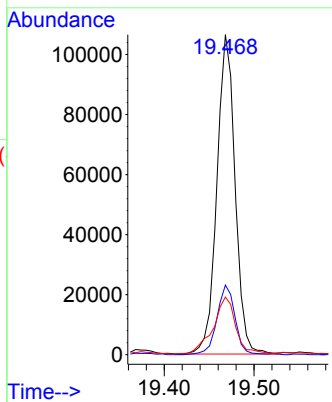
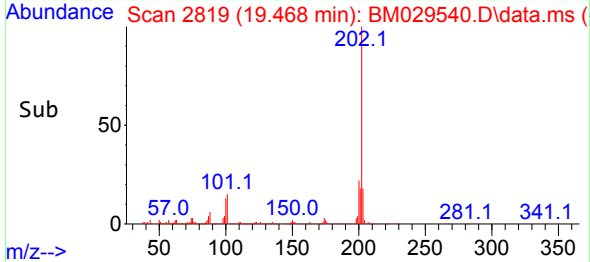
Instrument :
 BNA_M
 ClientSampleId :
 VNP2-B-1



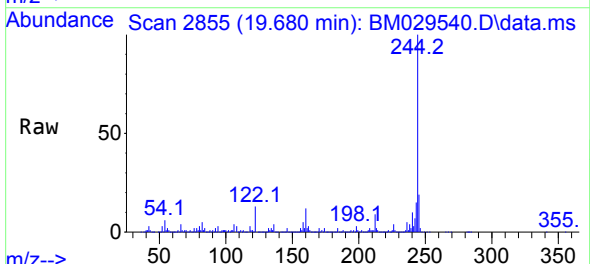
Tgt Ion:202 Resp: 150283
 Ion Ratio Lower Upper
 202 100
 200 21.8 17.0 25.6
 203 18.0 14.1 21.1

Manual Integrations
 APPROVED

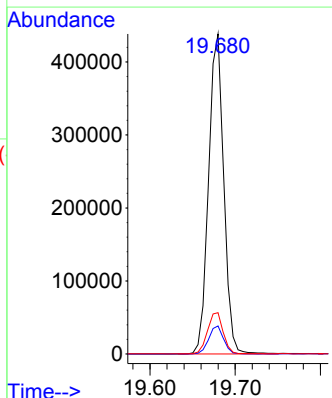
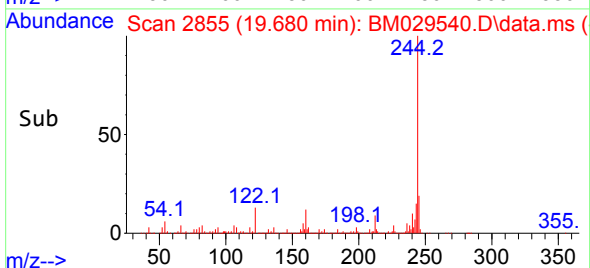
mohammad
 4/21/2021 8:35:19 AM

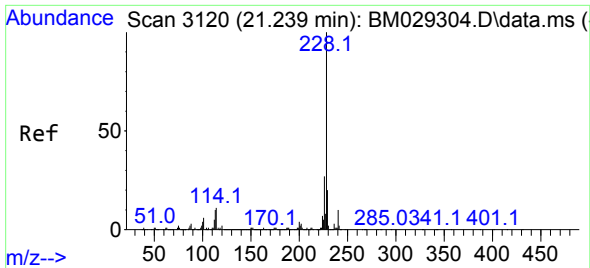


#79
 Terphenyl-d14
 Concen: 35.43 ng
 RT: 19.680 min Scan# 2855
 Delta R.T. -0.006 min
 Lab File: BM029540.D
 Acq: 19 Apr 2021 14:51



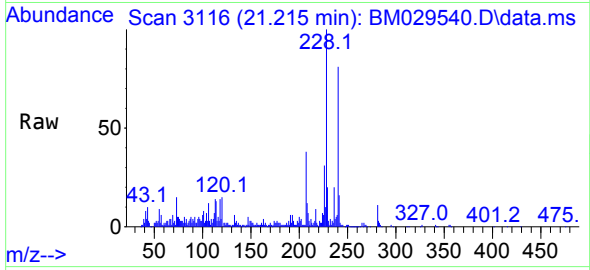
Tgt Ion:244 Resp: 542882
 Ion Ratio Lower Upper
 244 100
 212 8.8 6.5 9.7
 122 12.9 9.2 13.8





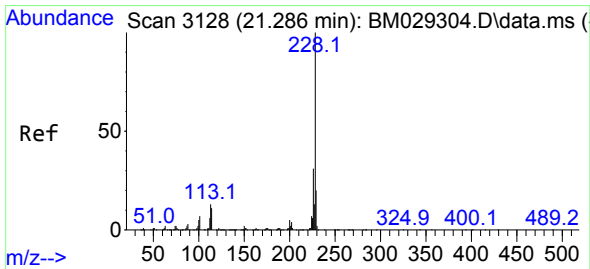
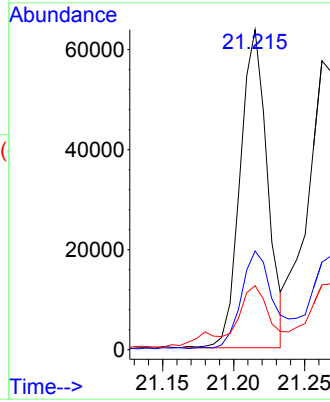
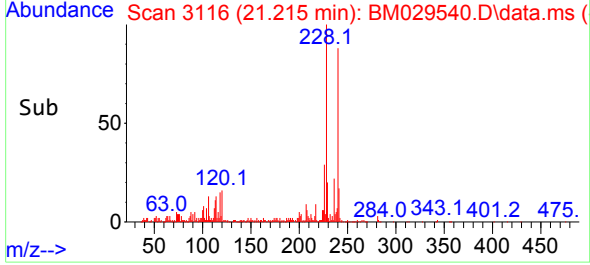
#81
 Benzo(a)anthracene
 Concen: 4.36 ng
 RT: 21.215 min Scan# 3116
 Delta R.T. -0.006 min
 Lab File: BM029540.D
 Acq: 19 Apr 2021 14:51

Instrument :
 BNA_M
 ClientSampled :
 VNPH2-B-1

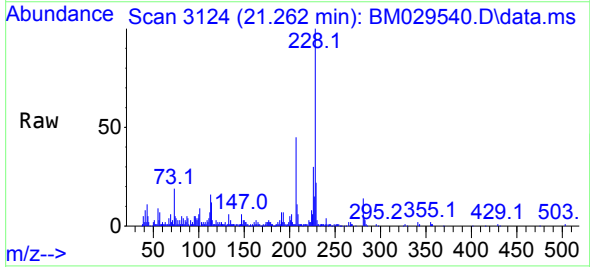


Tgt Ion:228 Resp: 84688
 Ion Ratio Lower Upper
 228 100
 226 30.8 21.9 32.9
 229 20.0 15.7 23.5

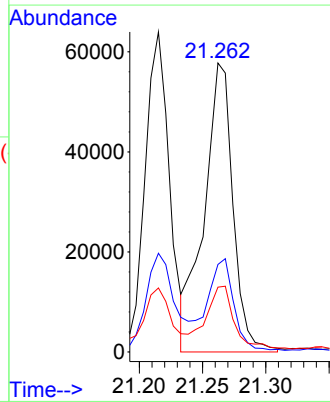
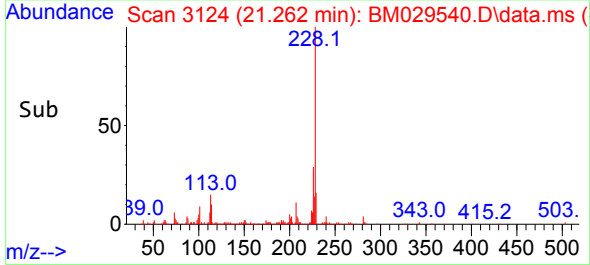
Manual Integrations
 APPROVED
 mohammad
 4/21/2021 8:35:19 AM

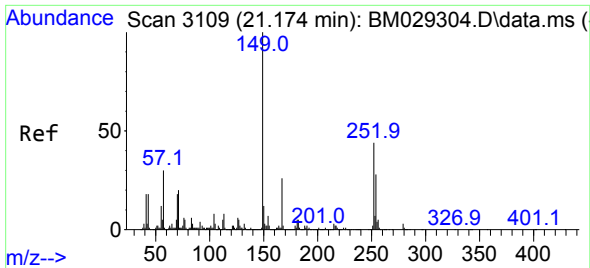


#83
 Chrysene
 Concen: 4.84 ng m
 RT: 21.262 min Scan# 3124
 Delta R.T. -0.012 min
 Lab File: BM029540.D
 Acq: 19 Apr 2021 14:51



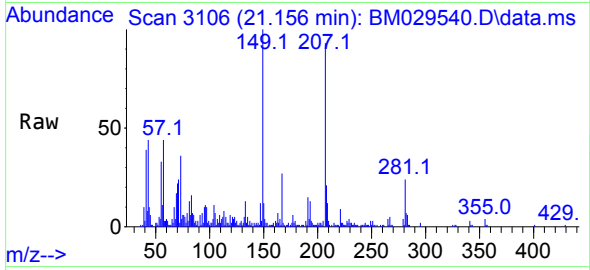
Tgt Ion:228 Resp: 92074
 Ion Ratio Lower Upper
 228 100
 226 30.3 24.7 37.1
 229 22.4 15.8 23.6





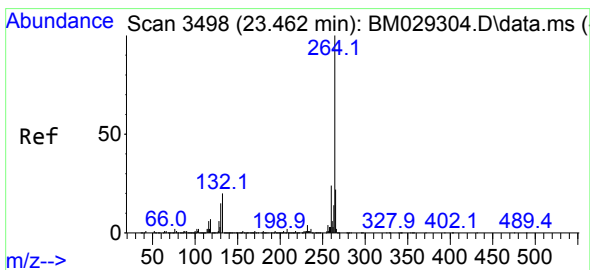
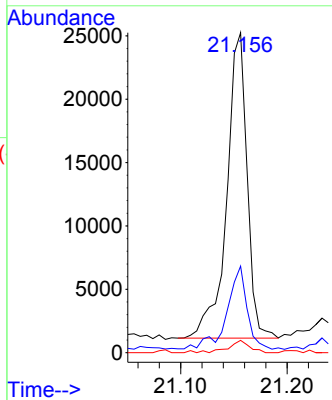
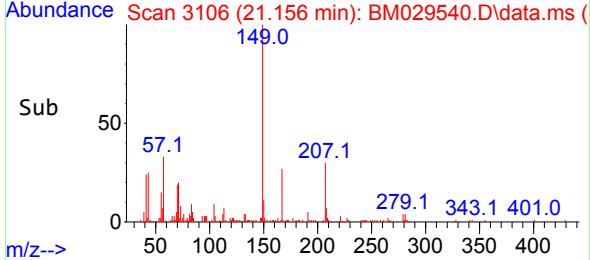
#84
 Bis(2-ethylhexyl)phthalate
 Concen: 2.29 ng
 RT: 21.156 min Scan# 3106
 Delta R.T. -0.006 min
 Lab File: BM029540.D
 Acq: 19 Apr 2021 14:51

Instrument :
 BNA_M
 ClientSampled :
 VNP2-B-1

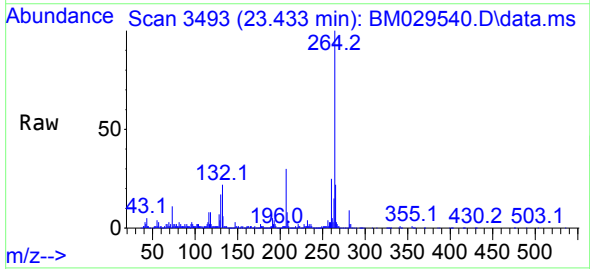


Tgt Ion:149 Resp: 32081
 Ion Ratio Lower Upper
 149 100
 167 27.0 20.6 31.0
 279 3.8 3.3 4.9

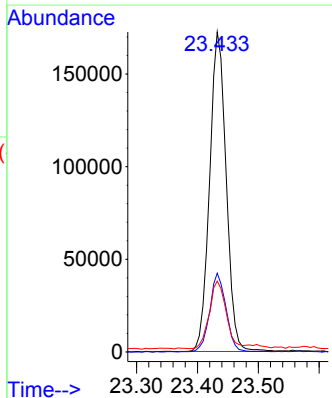
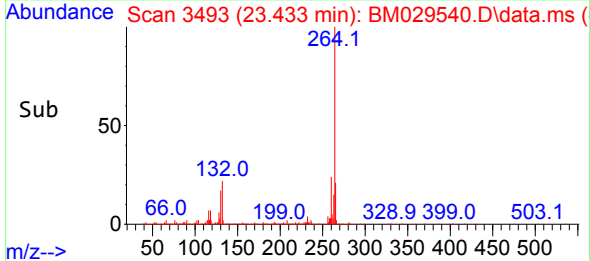
Manual Integrations
 APPROVED
 mohammad
 4/21/2021 8:35:19 AM

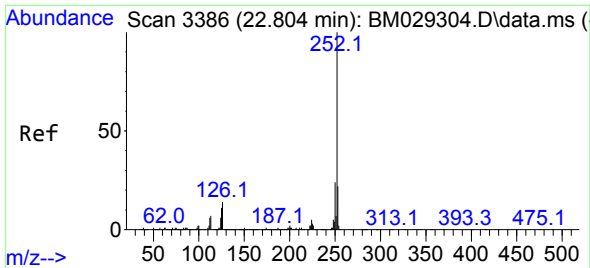


#86
 Perylene-d12
 Concen: 20.00 ng
 RT: 23.433 min Scan# 3493
 Delta R.T. -0.006 min
 Lab File: BM029540.D
 Acq: 19 Apr 2021 14:51



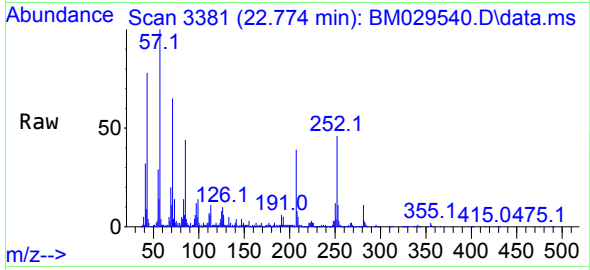
Tgt Ion:264 Resp: 325910
 Ion Ratio Lower Upper
 264 100
 260 24.6 19.6 29.4
 265 22.1 17.8 26.8





#88
 Benzo(b)fluoranthene
 Concen: 6.38 ng m
 RT: 22.774 min Scan# 3381
 Delta R.T. -0.006 min
 Lab File: BM029540.D
 Acq: 19 Apr 2021 14:51

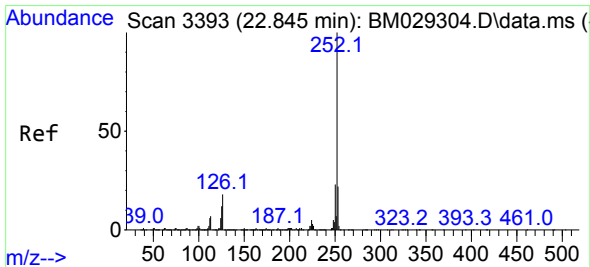
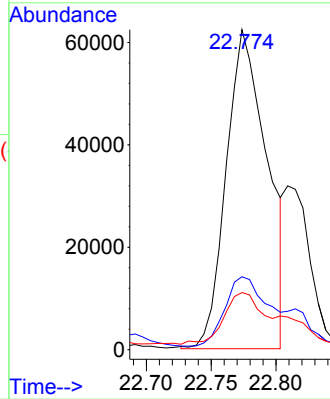
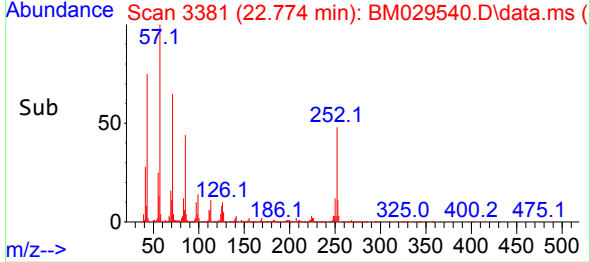
Instrument :
 BNA_M
 ClientSampled :
 VNPH2-B-1



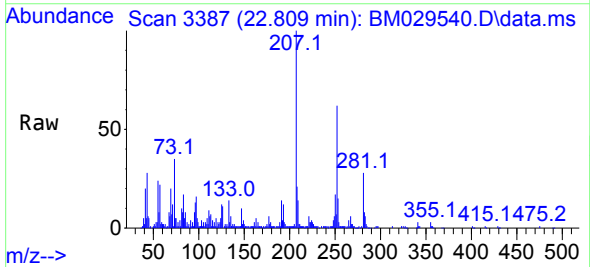
Tgt Ion:252 Resp: 136471
 Ion Ratio Lower Upper
 252 100
 253 22.8 17.6 26.4
 125 17.8 9.0 13.4#

Manual Integrations
 APPROVED

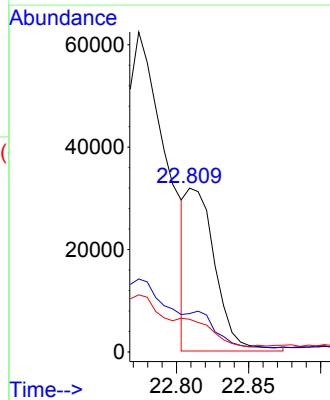
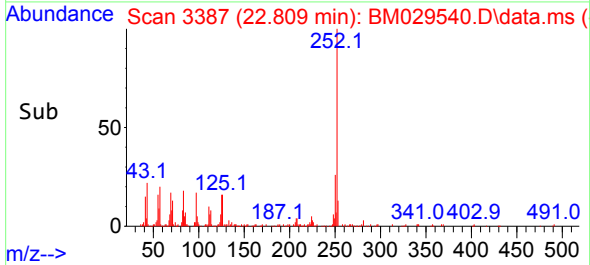
mohammad
 4/21/2021 8:35:19 AM

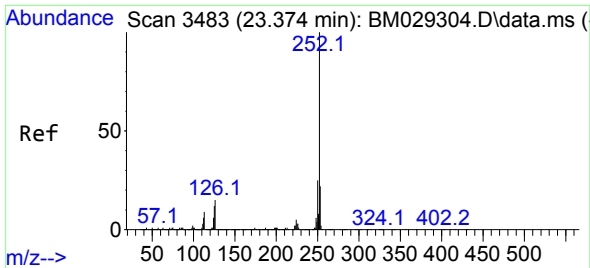


#89
 Benzo(k)fluoranthene
 Concen: 2.16 ng m
 RT: 22.809 min Scan# 3387
 Delta R.T. -0.018 min
 Lab File: BM029540.D
 Acq: 19 Apr 2021 14:51



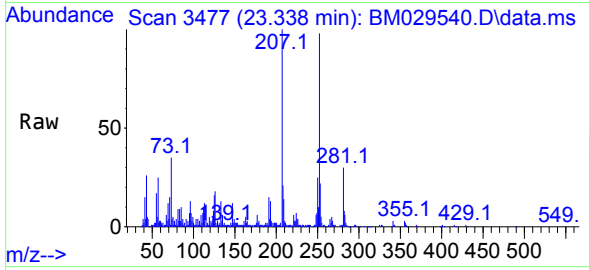
Tgt Ion:252 Resp: 44220
 Ion Ratio Lower Upper
 252 100
 253 23.4 17.6 26.4
 125 19.9 8.7 13.1#





#90
 Benzo(a)pyrene
 Concen: 4.65 ng
 RT: 23.338 min Scan# 3477
 Delta R.T. -0.006 min
 Lab File: BM029540.D
 Acq: 19 Apr 2021 14:51

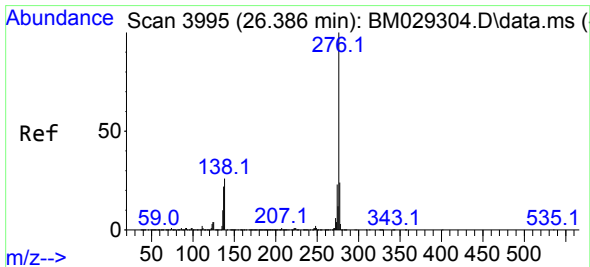
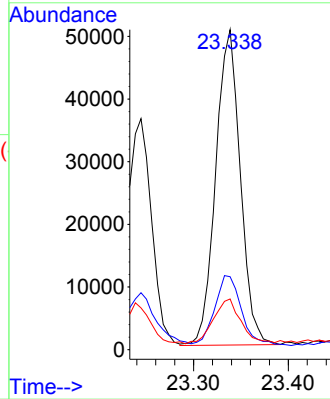
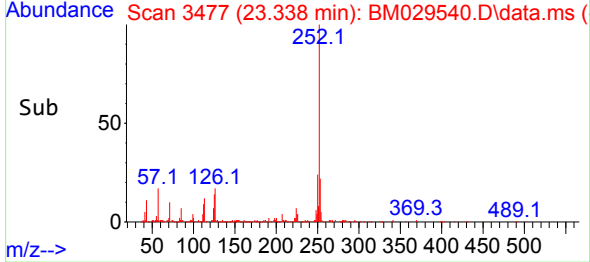
Instrument :
 BNA_M
 ClientSampled :
 VNP2-B-1



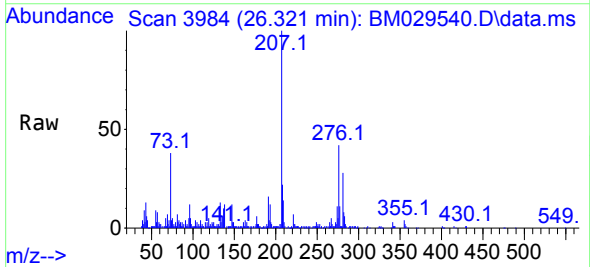
Tgt Ion:252 Resp: 90975
 Ion Ratio Lower Upper
 252 100
 253 22.8 17.0 25.4
 125 15.9 9.5 14.3#

Manual Integrations
 APPROVED

mohammad
 4/21/2021 8:35:19 AM



#92
 Benzo(g,h,i)perylene
 Concen: 3.38 ng
 RT: 26.321 min Scan# 3984
 Delta R.T. -0.024 min
 Lab File: BM029540.D
 Acq: 19 Apr 2021 14:51



Tgt Ion:276 Resp: 67184
 Ion Ratio Lower Upper
 276 100
 277 25.1 18.7 28.1
 138 29.5 19.0 28.4#

