

Data Path : Z:\HPCHEM1\BNA_M\DATA\BM042015\
 Data File : BM001088.D
 Acq On : 21 Apr 2015 05:11
 Operator : TP/IZ
 Sample : G1859-06MSD
 Misc :
 ALS Vial : 22 Sample Multiplier: 1

Quant Time: Apr 21 06:59:09 2015
 Quant Method : Z:\HPCHEM1\BNA_M\Methods\SOM01.2-EPA-BM041515.M
 Quant Title : SVOA CALIBRATION
 QLast Update : Tue Apr 21 04:18:14 2015
 Response via : Initial Calibration

Internal Standards	R.T.	QIon	Response	Conc	Units	Dev(Min)
1) 1,4-Dichlorobenzene-d4	7.57	152	199777	20.00	ng/ul	0.00
18) Naphthalene-d8	10.36	136	841013	20.00	ng/ul	0.00
35) Acenaphthene-d10	14.24	164	470695	20.00	ng/ul	0.00
61) Phenanthrene-d10	16.99	188	1036863	20.00	ng/ul	0.00
75) Chrysene-d12	21.18	240	1101790	20.00	ng/ul	0.00
83) Perylene-d12	23.35	264	1058160	20.00	ng/ul	0.00

System Monitoring Compounds

3) 1,4-Dioxane-d8	3.05	96	111	0.03	ng/uL	0.02
5) Phenol-d5	6.75	99	496564	31.87	ng/ul	0.00
7) Bis-(2-Chloroethyl)ether-d	6.91	67	320221	32.98	ng/ul	0.00
9) 2-Chlorophenol-d4	7.10	132	406780	32.10	ng/ul	0.00
13) 4-Methylphenol-d8	8.29	113	371463	30.21	ng/ul	0.00
19) Nitrobenzene-d5	8.73	128	198386	34.98	ng/ul	0.00
22) 2-Nitrophenol-d4	9.45	143	215422	34.02	ng/ul	0.00
26) 2,4-Dichlorophenol-d3	9.99	165	365299	29.60	ng/ul	0.00
29) 4-Chloroaniline-d4	10.50	131	245699	20.42	ng/ul	0.00
43) Dimethylphthalate-d6	13.65	166	1121131	35.75	ng/ul	0.00
46) Acenaphthylene-d8	13.92	160	1267136	28.23	ng/ul	0.00
51) 4-Nitrophenol-d4	14.46	143	203877	33.44	ng/ul	0.00
57) Fluorene-d10	15.23	176	810302	25.99	ng/ul	0.00
62) 4,6-Dinitro-2-methylphenol	15.36	200	92169	16.37	ng/ul	0.00
70) Anthracene-d10	17.08	188	1161345	24.74	ng/ul	0.00
76) Pyrene-d10	19.39	212	1144190	22.37	ng/ul	0.00
87) Benzo(a)pyrene-d12	23.21	264	826383	17.45	ng/ul	0.00

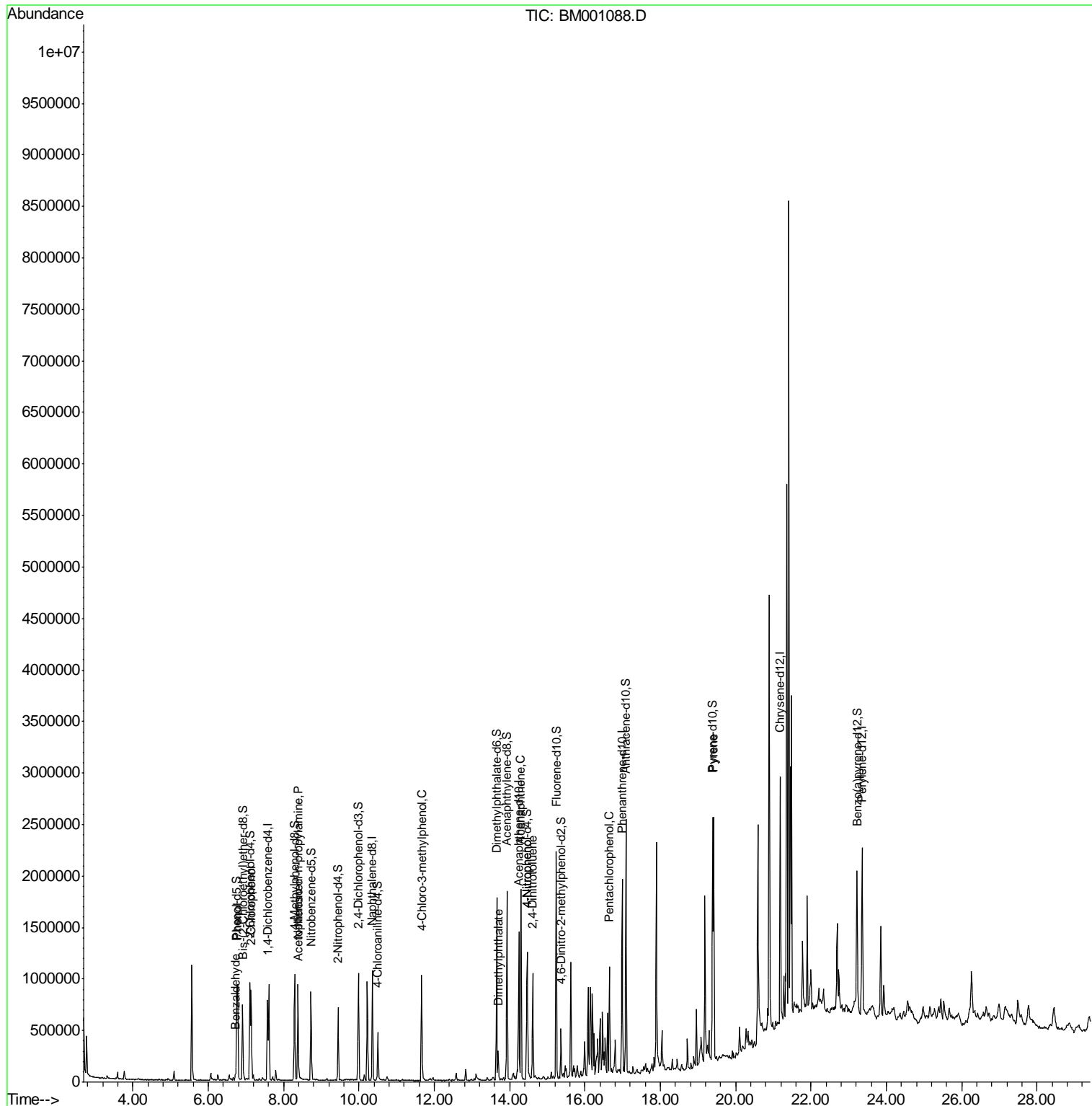
Target Compounds

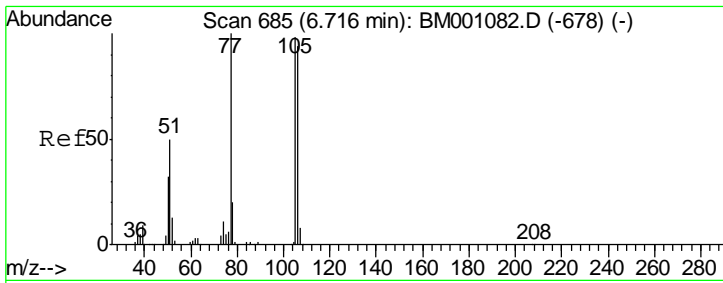
					Qvalue
4) Benzaldehyde	6.72	77	14822	1.48	ng/ul# 84
6) Phenol	6.78	94	453284	27.50	ng/ul 98
10) 2-Chlorophenol	7.14	128	361678	26.96	ng/ul 96
14) Acetophenone	8.39	105	72130	3.62	ng/ul 96
15) N-Nitroso-di-n-propylamine	8.38	70	283313	28.56	ng/ul 93
33) 4-Chloro-3-methylphenol	11.66	107	353402	27.92	ng/ul 96
44) Dimethylphthalate	13.70	163	173186	4.93	ng/ul# 99
49) Acenaphthene	14.30	153	705672	21.97	ng/ul 98
52) 4-Nitrophenol	14.47	109	128682	27.92	ng/ul 91
54) 2,4-Dinitrotoluene	14.61	165	258345	26.64	ng/ul 100
68) Pentachlorophenol	16.64	266	164267	27.32	ng/ul 97
77) Pyrene	19.42	202	1304916	18.65	ng/ul 100

(#) = qualifier out of range (m) = manual integration (+) = signals summed

Data Path : Z:\HPCHEM1\BNA_M\DATA\BM042015\
 Data File : BM001088.D
 Acq On : 21 Apr 2015 05:11
 Operator : TP/IZ
 Sample : G1859-06MSD
 Misc :
 ALS Vial : 22 Sample Multiplier: 1

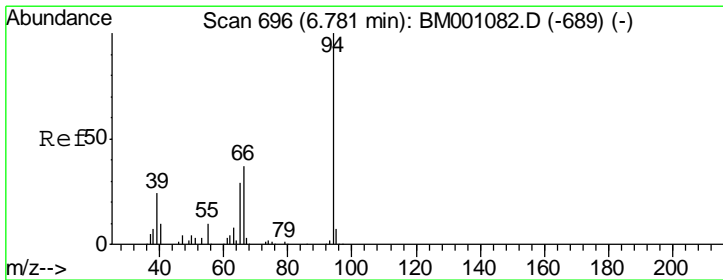
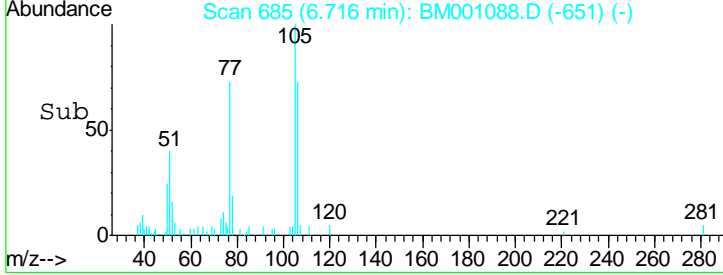
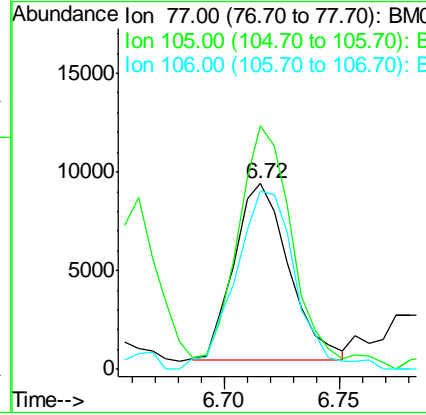
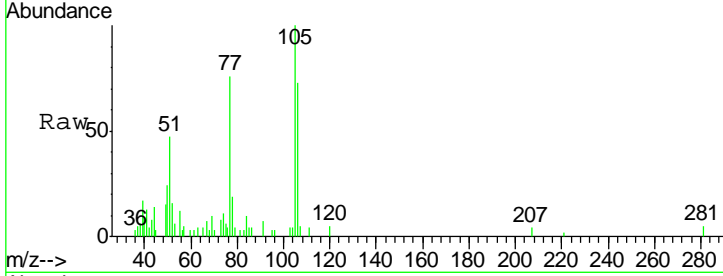
Quant Time: Apr 21 06:59:09 2015
 Quant Method : Z:\HPCHEM1\BNA_M\Methods\SOM01.2-EPA-BM041515.M
 Quant Title : SVOA CALIBRATION
 QLast Update : Tue Apr 21 04:18:14 2015
 Response via : Initial Calibration





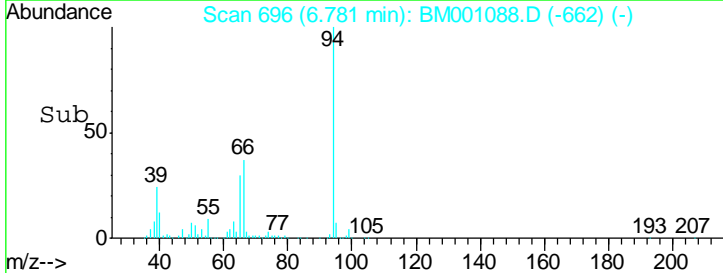
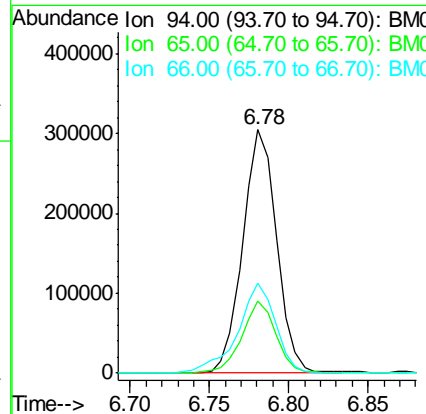
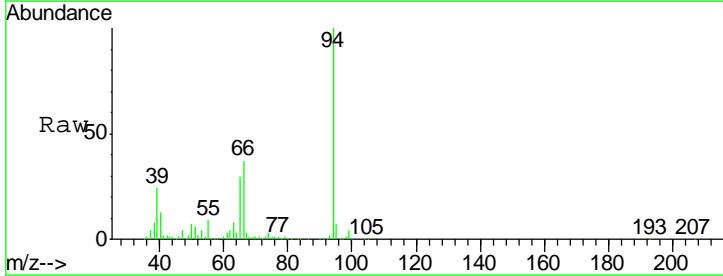
#4
Benzaldehyde
Concen: 1.48 ng/ul
RT: 6.72 min Scan# 685
Delta R.T. -0.00 min
Lab File: BM001088.D
Acq: 21 Apr 2015 05:11

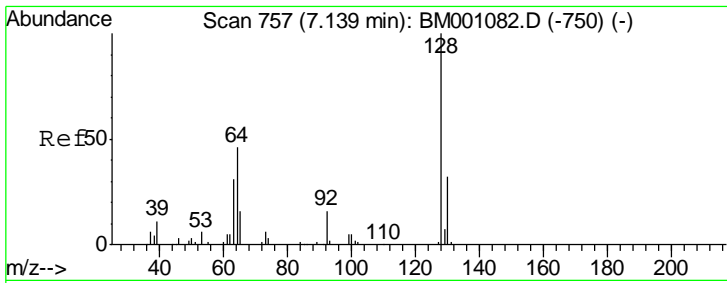
Tgt Ion	Resp	Lower	Upper
77	14822		
105	131.0	81.1	121.7#
106	96.2	78.1	117.1



#6
Phenol
Concen: 27.50 ng/ul
RT: 6.78 min Scan# 696
Delta R.T. -0.00 min
Lab File: BM001088.D
Acq: 21 Apr 2015 05:11

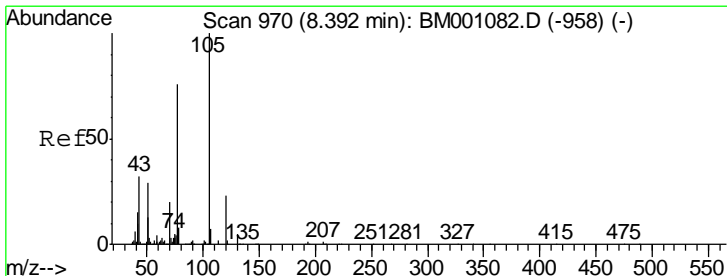
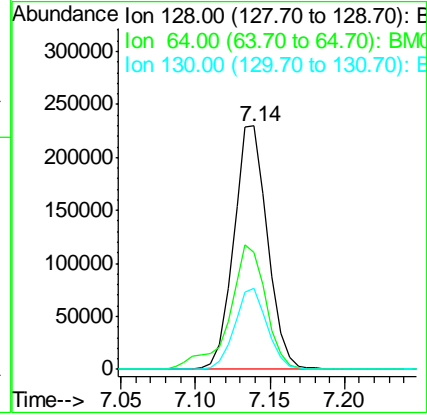
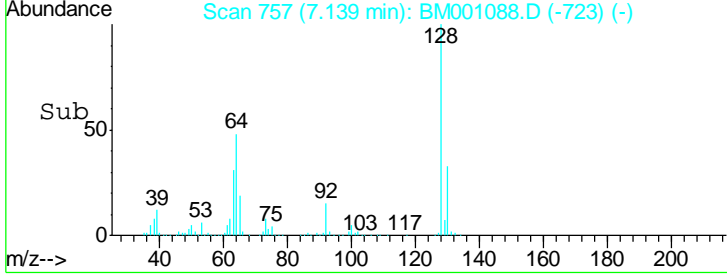
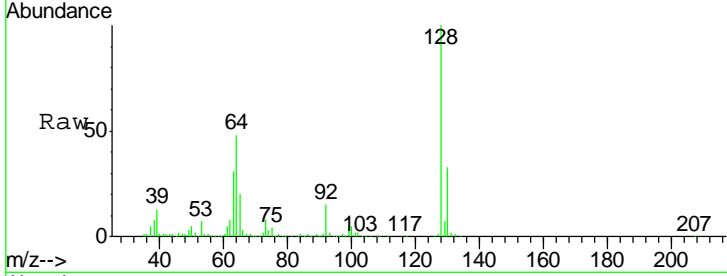
Tgt Ion	Resp	Lower	Upper
94	453284		
65	29.5	24.9	37.3
66	36.7	29.8	44.8





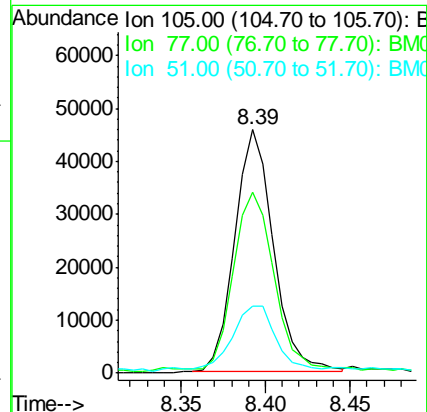
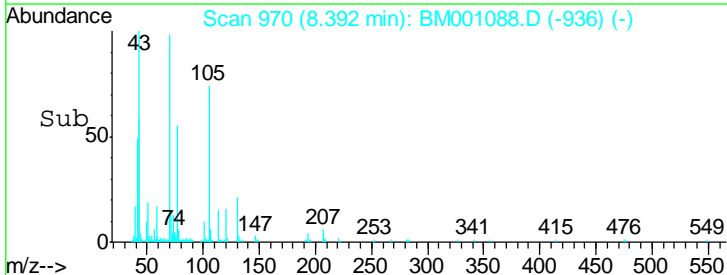
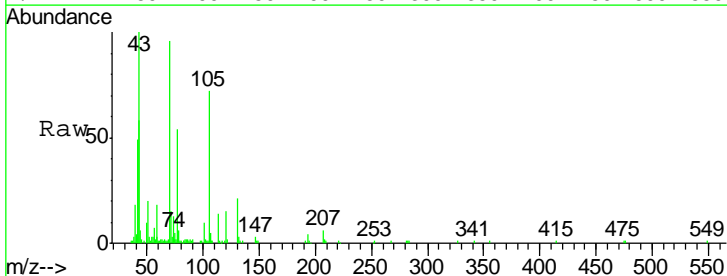
#10
 2-Chlorophenol
 Concen: 26.96 ng/ul
 RT: 7.14 min Scan# 757
 Delta R.T. -0.00 min
 Lab File: BM001088.D
 Acq: 21 Apr 2015 05:11

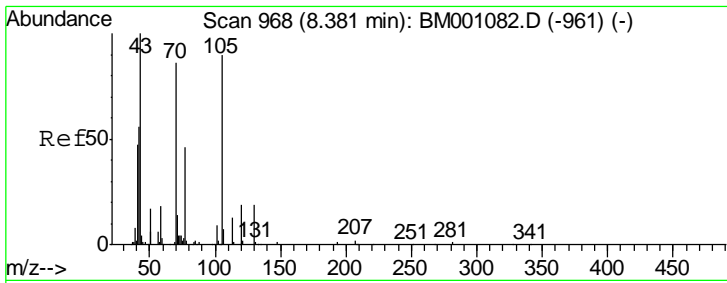
Tgt Ion	Resp	Lower	Upper
128	361678		
64	48.1	40.4	60.6
130	33.2	24.9	37.3



#14
 Acetophenone
 Concen: 3.62 ng/ul
 RT: 8.39 min Scan# 970
 Delta R.T. -0.00 min
 Lab File: BM001088.D
 Acq: 21 Apr 2015 05:11

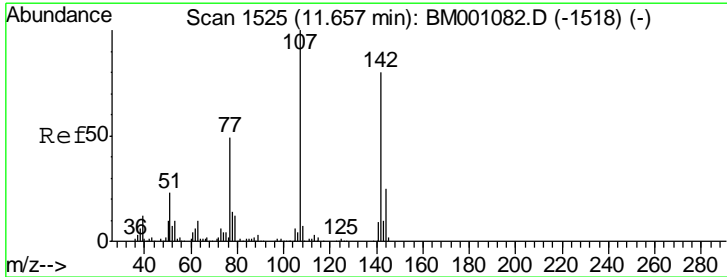
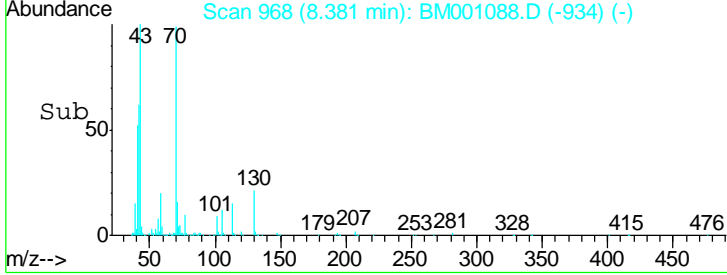
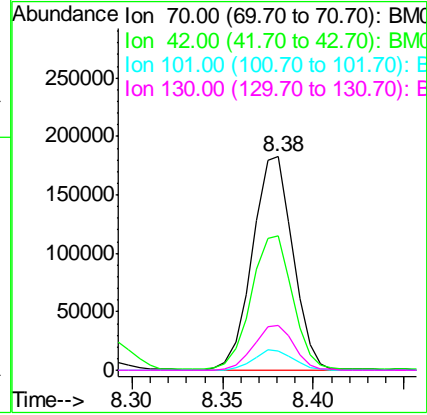
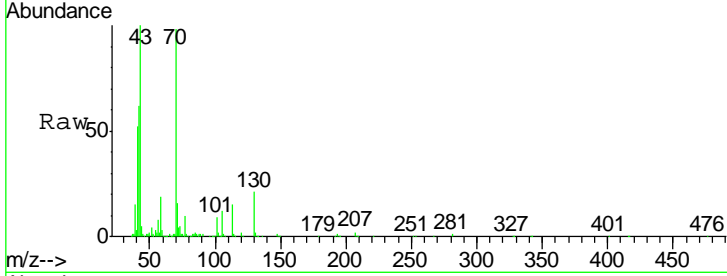
Tgt Ion	Resp	Lower	Upper
105	72130		
77	74.3	61.5	92.3
51	27.6	24.5	36.7





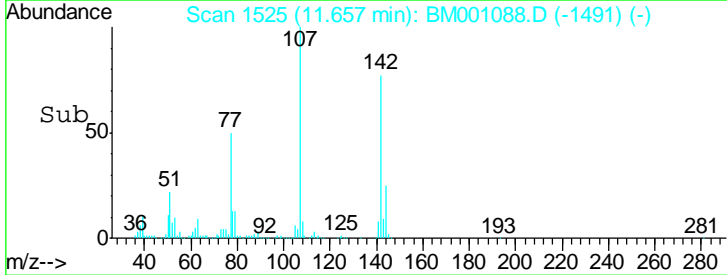
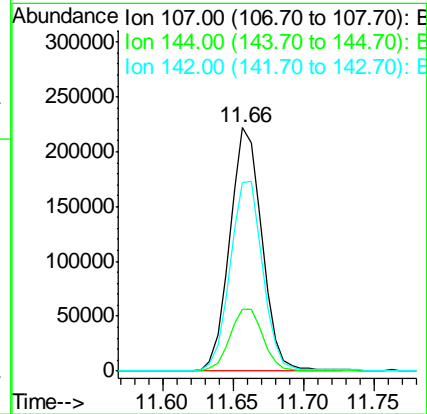
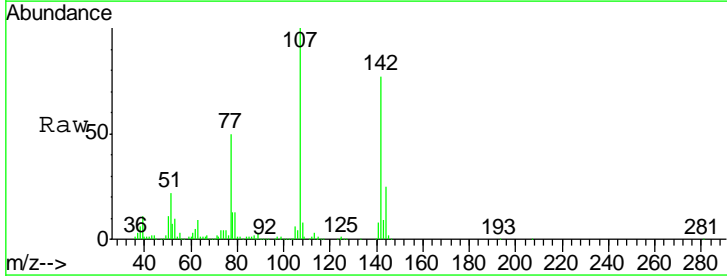
#15
 N-Nitroso-di-n-propylamine
 Concen: 28.56 ng/ul
 RT: 8.38 min Scan# 968
 Delta R.T. -0.00 min
 Lab File: BM001088.D
 Acq: 21 Apr 2015 05:11

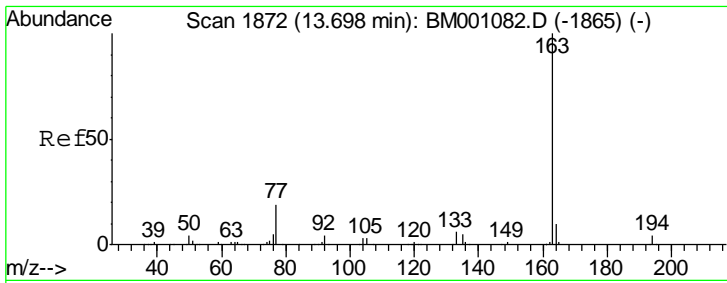
Tgt Ion	Resp	Lower	Upper
70	100		
42	62.9	56.3	84.5
101	9.2	7.5	11.3
130	21.1	18.4	27.6



#33
 4-Chloro-3-methylphenol
 Concen: 27.92 ng/ul
 RT: 11.66 min Scan# 1525
 Delta R.T. 0.00 min
 Lab File: BM001088.D
 Acq: 21 Apr 2015 05:11

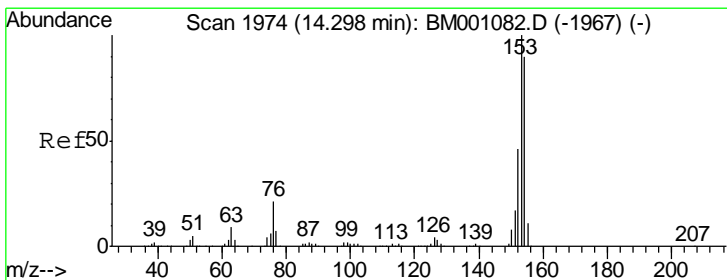
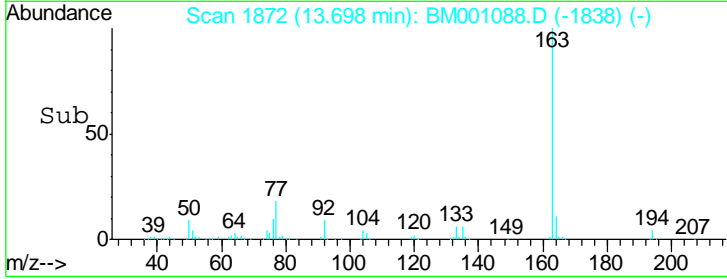
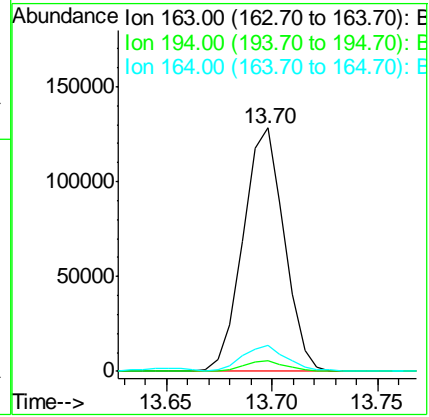
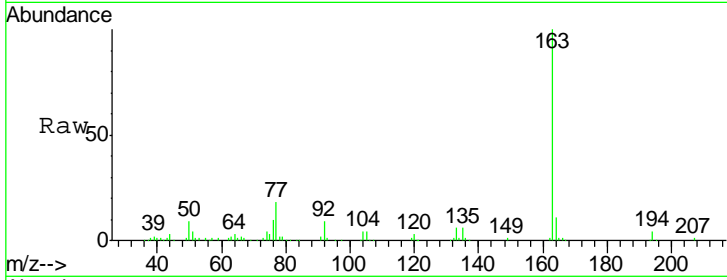
Tgt Ion	Resp	Lower	Upper
107	100		
144	25.5	20.2	30.2
142	77.5	65.6	98.4





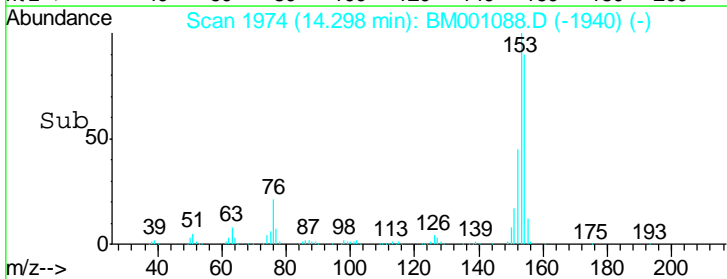
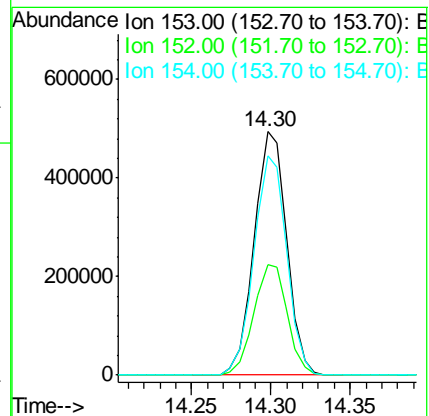
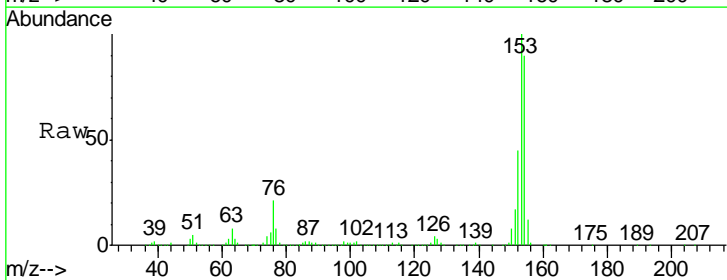
#44
 Dimethylphthalate
 Concen: 4.93 ng/ul
 RT: 13.70 min Scan# 1872
 Delta R.T. -0.00 min
 Lab File: BM001088.D
 Acq: 21 Apr 2015 05:11

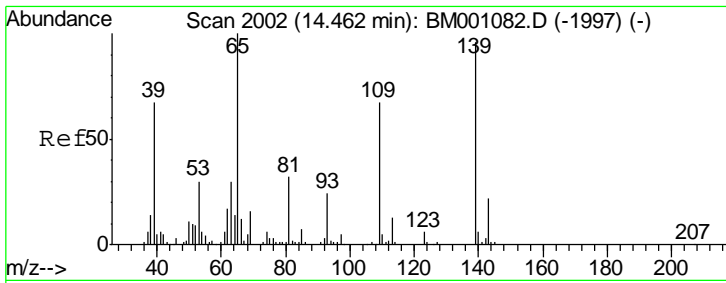
Tgt Ion	Resp	Lower	Upper
163	173186		
194	4.5	3.0	4.4#
164	10.5	8.2	12.4



#49
 Acenaphthene
 Concen: 21.97 ng/ul
 RT: 14.30 min Scan# 1974
 Delta R.T. -0.00 min
 Lab File: BM001088.D
 Acq: 21 Apr 2015 05:11

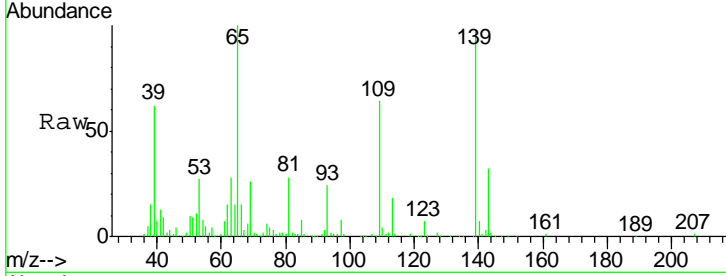
Tgt Ion	Resp	Lower	Upper
153	705672		
152	45.5	37.8	56.6
154	90.2	71.2	106.8



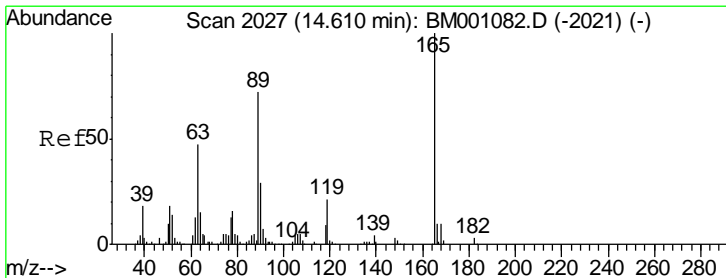
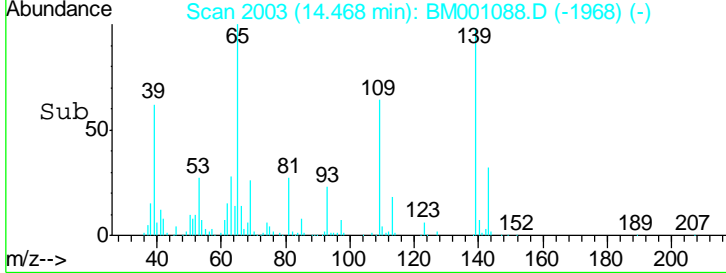
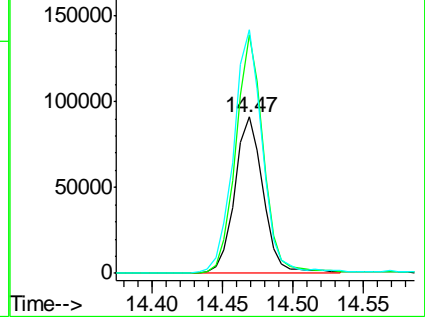


#52
 4-Nitrophenol
 Concen: 27.92 ng/ul
 RT: 14.47 min Scan# 2003
 Delta R.T. 0.01 min
 Lab File: BM001088.D
 Acq: 21 Apr 2015 05:11

Tgt Ion	Resp	Lower	Upper
109	128682		
139	152.8	112.6	168.8
65	156.0	115.9	173.9

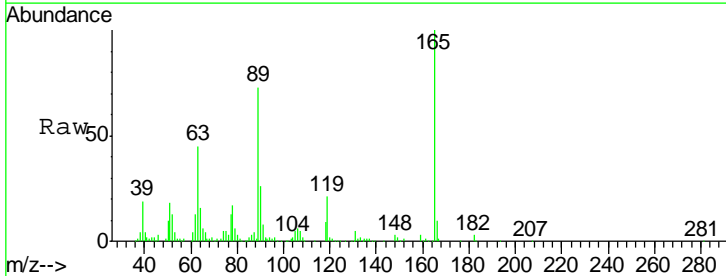


Abundance Ion 109.00 (108.70 to 109.70): E
 Ion 139.00 (138.70 to 139.70): E
 Ion 65.00 (64.70 to 65.70): B



#54
 2,4-Dinitrotoluene
 Concen: 26.64 ng/ul
 RT: 14.61 min Scan# 2027
 Delta R.T. 0.00 min
 Lab File: BM001088.D
 Acq: 21 Apr 2015 05:11

Tgt Ion	Resp	Lower	Upper
165	258345		
63	45.2	36.1	54.1
182	2.8	2.4	3.6



Abundance Ion 165.00 (164.70 to 165.70): E
 Ion 63.00 (62.70 to 63.70): B
 Ion 182.00 (181.70 to 182.70): E

